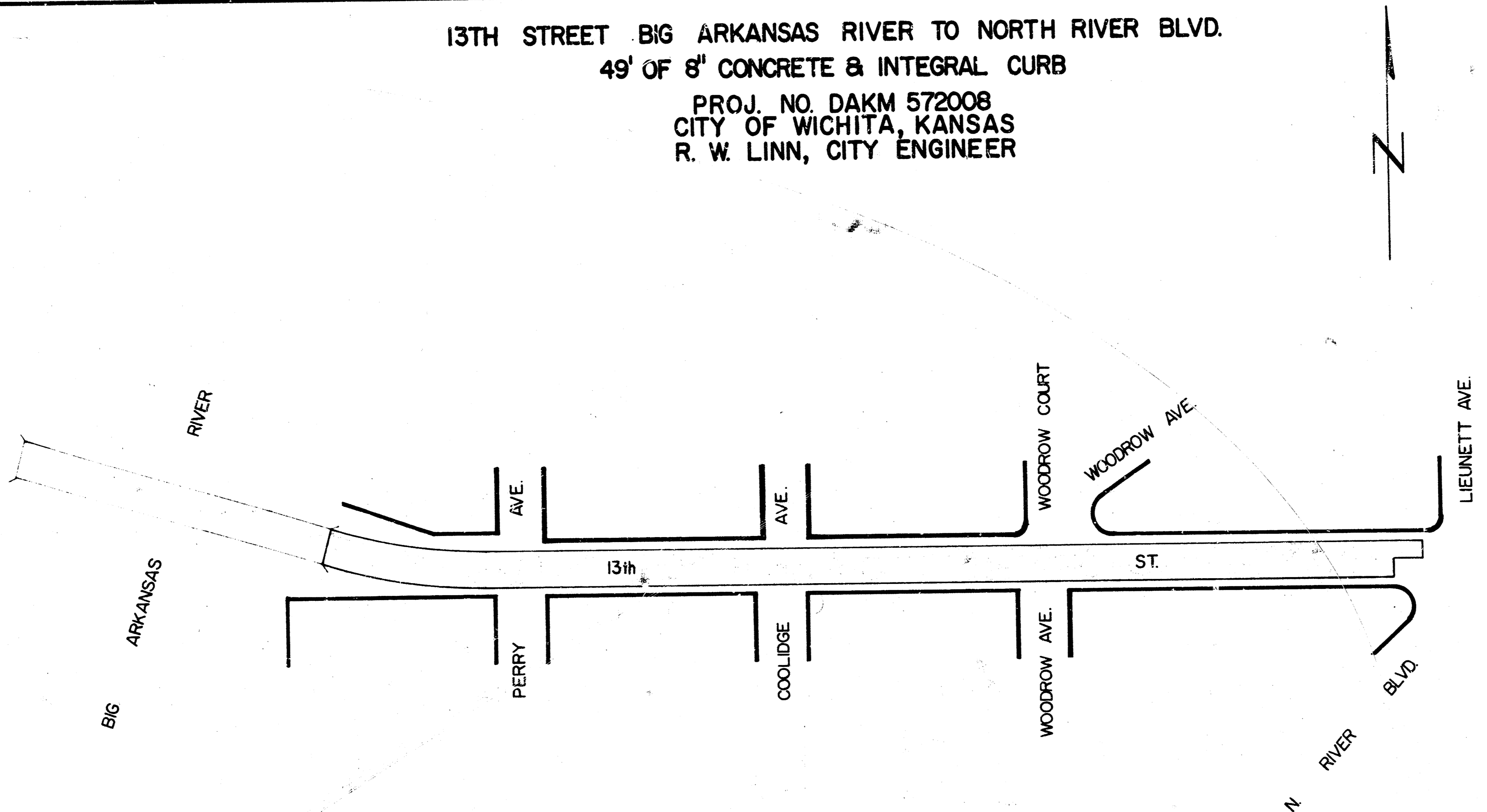


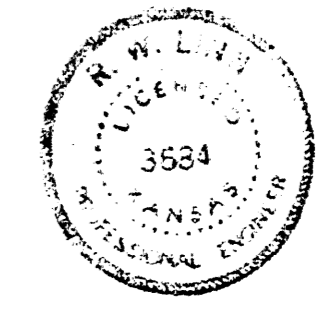
13TH STREET BIG ARKANSAS RIVER TO NORTH RIVER BLVD.
49' OF 8" CONCRETE & INTEGRAL CURB

PROJ. NO. DAKM 572008
CITY OF WICHITA, KANSAS
R. W. LINN, CITY ENGINEER

Description	INDEX	Sheet No.
Title Sheet		1
Typical Sections		2
Plan Sheets		3-6
Detail Sheet		6
Cross-sections		7-13

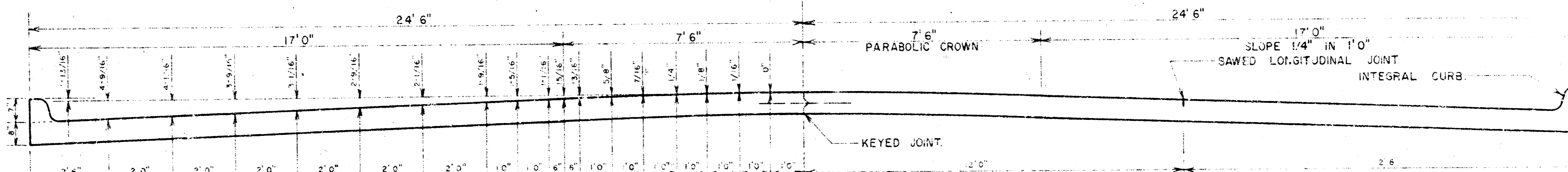


- GENERAL NOTES:
1. FIELD ENGINEER TO MAKE TIES TO ALL EXISTING IRONS & IRONS IN THIMBLES. EXISTING IRONS IN THIMBLES TO BE REPLACED WITH IRON IN THIMBLE. ALL IRONS IN PAVEMENT TO BE REPLACED WITH IRON IN THIMBLE.
 2. FIELD ENGINEER TO DETERMINE WHICH AREAS OF THE SUB-GRADE ARE TO BE CEMENT OR LIME TREATED AND WHICH AREAS ARE TO BE SUB-GRADE MODIFIED.
 3. NO WORK TO BE DONE ON PRIVATE PROPERTY WITHOUT PRIOR CONSENT OF PROPERTY OWNER.
 4. ALIGNMENT ON WEST END OF PROJECT IS TIED TO THE E. OF THE EXISTING BRIDGE OVER THE BIG ARKANSAS RIVER AT 13TH STREET.
 5. FIELD ENGINEER TO FIELD LOCATE THE ALIGNMENT OF THE PROPOSED PAVEMENT BEFORE MARKING TREES FOR REMOVAL. SAVE AS MANY TREES AS POSSIBLE.
 6. FIELD ENGINEER TO LOCATE BACK OF WALK LINE TO SAVE TREES ALONG PROPERTY LINE. MAXIMUM DISTANCE BETWEEN PROPERTY LINE & BACK OF WALK LINE IS 15 FT.
 7. THE FIELD ENGINEER SHALL DETERMINE WHERE NEW MANHOLE FRAMES AND COVERS ARE NEEDED. NEW MANHOLE FRAMES AND COVERS SHALL BE PAID BY FORCE ACCOUNT.
 8. FIELD ENGINEER SHALL APPROVE ALL BORROW EXCAVATION BEFORE IT IS USED ON THIS PROJECT.
 9. FIELD ENGINEER TO RE-CROSS-SECTION AREAS WHERE STORM SEWER CONTRACTOR STORED EXCAVATED MATERIAL OVER NEW STORM SEWER TRENCH.



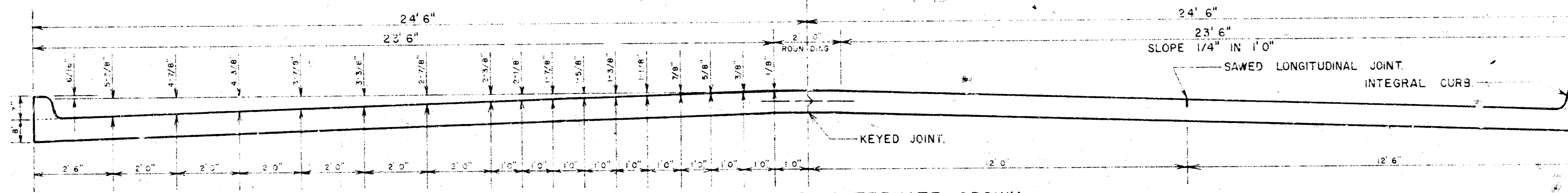
PROJ. NO. DAKM 572008
 CITY OF WICHITA, KANSAS
 R. W. LINN, CITY ENGINEER

SYMMETRICAL ABOUT CENTERLINE



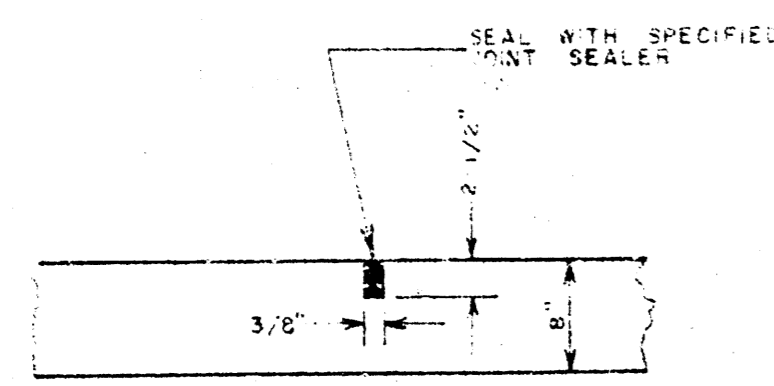
TYPICAL SECTION WITH STANDARD CROWN
 48' 0" CONCRETE PAVEMENT

SYMMETRICAL ABOUT CENTERLINE



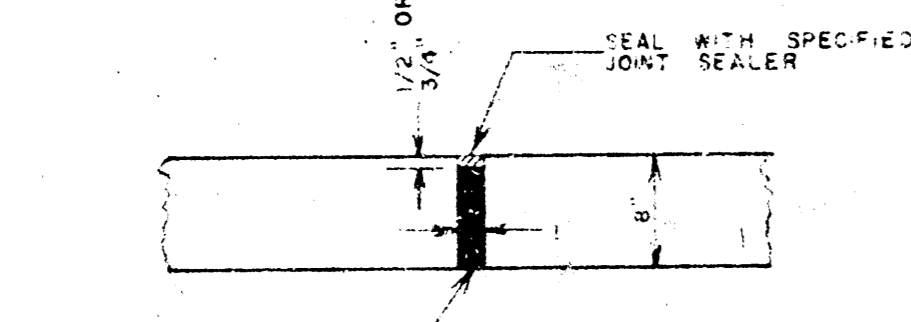
TYPICAL SECTION WITH ALTERNATE CROWN
 48' 0" CONCRETE PAVEMENT

SAWED CONTRACTION JOINTS ARE TO BE CONSTRUCTED AT 30' 0" INTERVALS EXCEPT WHERE AN EXPANSION JOINT IS USED.

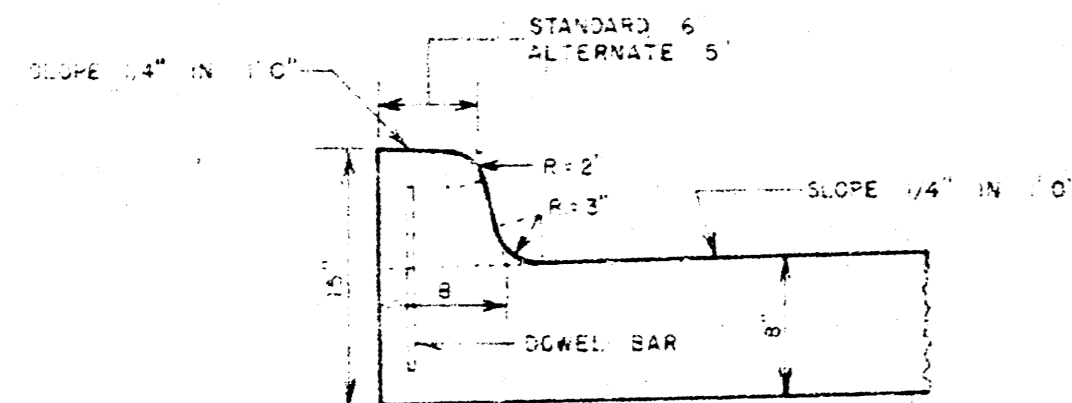


DETAIL OF SAWED CONTRACTION AND LONGITUDINAL JOINTS

EXPANSION JOINTS ARE TO BE CONSTRUCTED AT MAXIMUM INTERVALS OF 120' 0".

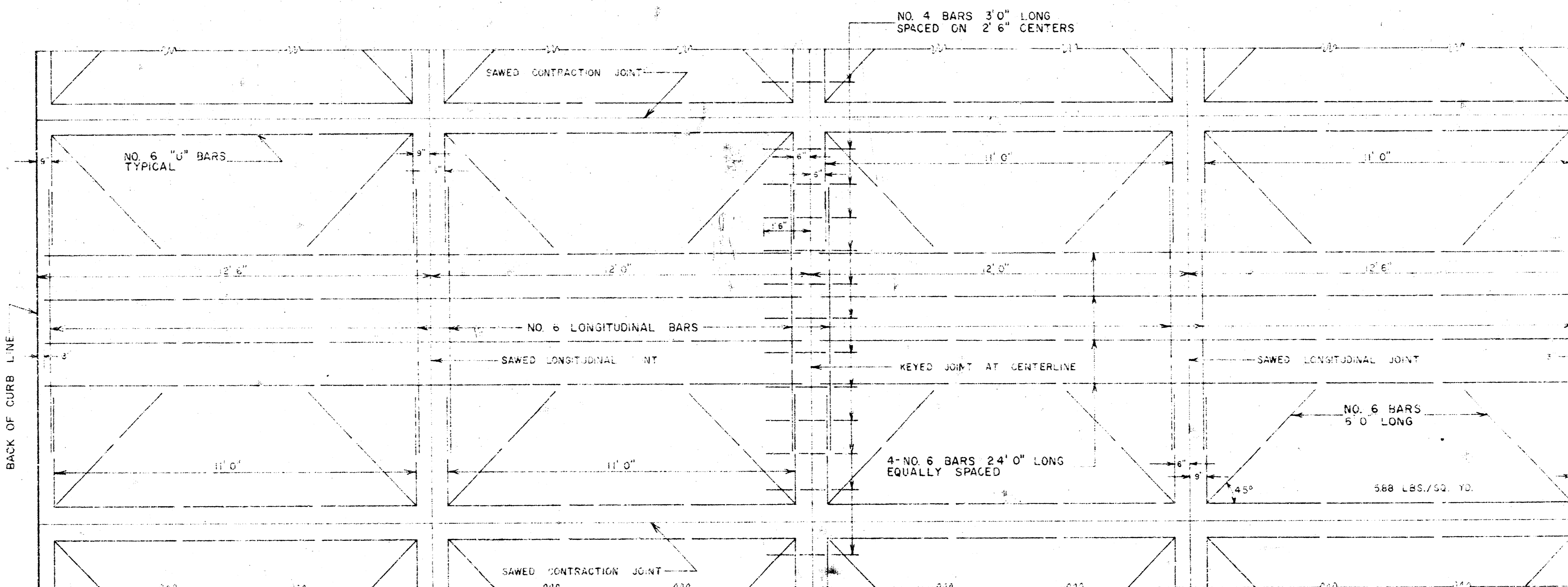


DETAIL OF EXPANSION JOINT



DETAIL OF INTEGRAL CURB

INTEGRAL CURB SHALL BE CUT THROUGH TO THE PAVEMENT IN UNIFORM LENGTHS OF NOT MORE THAN TEN FOOT INTERVALS BETWEEN EXPANSION JOINTS. EXPANSION JOINTS HAVING THE SAME THICKNESS AS THE EXPANSION JOINTS IN THE PAVEMENT SHALL BE CONSTRUCTED IN THE INTEGRAL CURB AT THE SPECIFIED LOCATIONS. NUMBER 4 OR NUMBER 6 DOWELS SHALL BE INSTALLED IN THE INTEGRAL CURB AS SHOWN ON APPROXIMATELY 2' 6" CENTERS. PAVEMENT GRADES SHOWN ON PLANS ARE FOR STANDARD CROWN.



TYPICAL STEEL PATTERN
 48' 0" CONCRETE PAVEMENT



Checked by
 Date
 Ext.
 Checked D.L.S.

B. M. 124.796 N. W. COR. CONC. BASE TO GULF SIGN ON S. E. COR. 13th ST. & PERRY.
 B. M. 124.849 U.S.G.S. 10' SOUTH OF WALK & 25' EAST OF S. E. END BIG RIVER BRIDGE ON 13th ST.
 B. M. 124.962 CITY STD. DISC. IN BRIDGE WK., N. E. COR. WING ON N. E. COR. BRIDGE, BIG RIVER & 13th ST.

SCALE: 1" = 20'

CURVE DATA BASED ON Δ RAD. A. 7.332-45
 7.133-87

STA.	CHG.	OFFSETS	DEFLECTION	TOTAL
0+00			0°00'00"	0°00'00"
0+25	25.00'	24.02'	25.98'	0°52'13"
0+50		24.03'	25.97'	1°44'27"
0+75		24.02'	25.98'	2°36'40"
1+00		24.02'	25.98'	3°28'53"
1+25		24.03'	25.97'	4°21'07"
1+50		24.02'	25.98'	5°13'20"
1+75		24.03'	25.97'	6°05'34"
2+00	25.00'	24.02'	25.98'	6°57'47"
2+27.75	27.75'	26.67'	28.83'	7°55'45"

DEFLECTION IN MIN./FT. = 2.08891328 MIN./FT.

Contractor To Excavate Bridge Approach To The Limits (Depth & Length) As Determined By The Field Engineer. Excavation To Be Paid As Cu. Yds. Comp. Fill. Excavation & Fill To Be Paid As Cu. Yds. Comp. Fill.

Construct Neoprene Seal Jt. @ Sta. 0+14
 See Sheet # 6 For Detail
 Paying Contractor To Coordinate Constr. With Bridge Repair Contractor

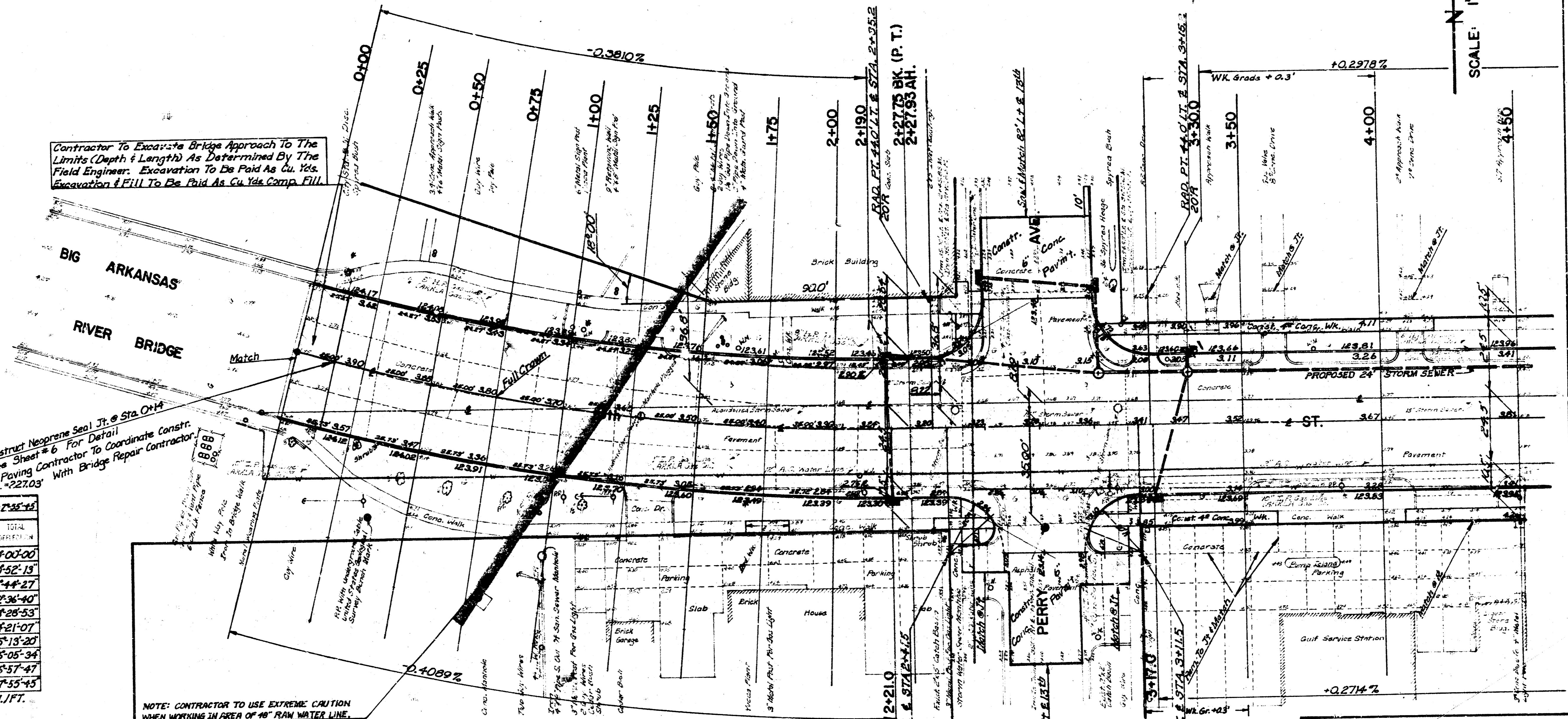
NOTE: CONTRACTOR TO USE EXTREME CAUTION WHEN WORKING IN AREA OF 48" RAW WATER LINE.

EARTHWORK		QUANTITIES	
EXCAVATION	COMPACTED FILL	BORROW EXCAVATION	
CU. YDS. EXCAV. = 3002.2 C.Y.	CU. YDS. COMP. FILL = 1744.0	CU. YDS. BORROW EXCAV. = 1500.0 C.Y.	
+ 10% = 3002.2 C.Y.	+ 10% = 1744.0		
TOTAL = 3302.4 C.Y.	TOTAL = 1900.4	TOTAL = 1500.0 C.Y.	

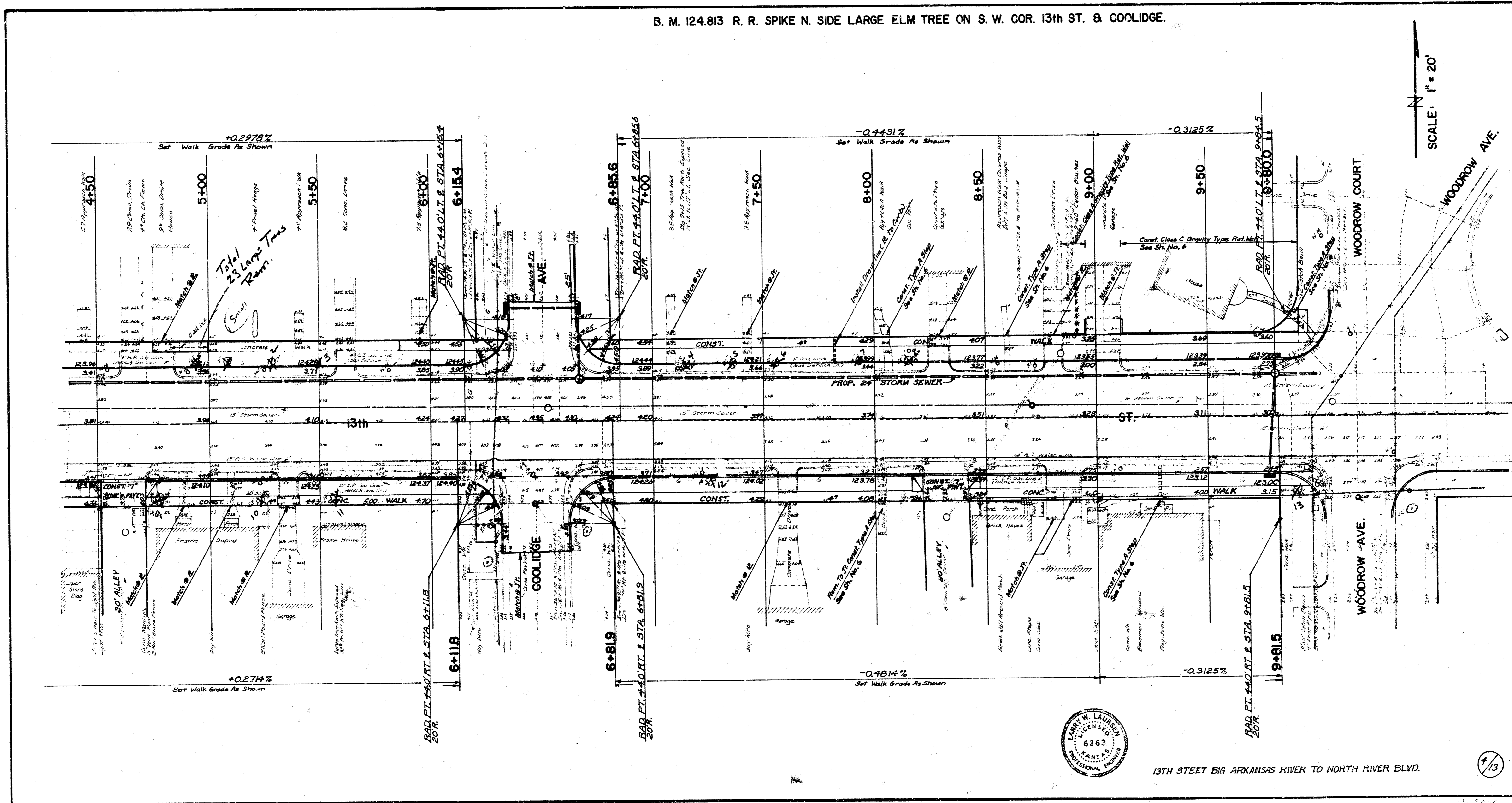
13th STREET
 BIG ARKANSAS RIVER TO
 NORTH RIVER BLVD.
 CITY OF WICHITA, KANSAS
 R. W. LINN CITY ENGINEER
 DATE: MAY 1972
 PROJ. NO. DAKM 572008



3/13



B. M. 124.813 R. R. SPIKE N. SIDE LARGE ELM TREE ON S. W. COR. 13th ST. & COOLIDGE.

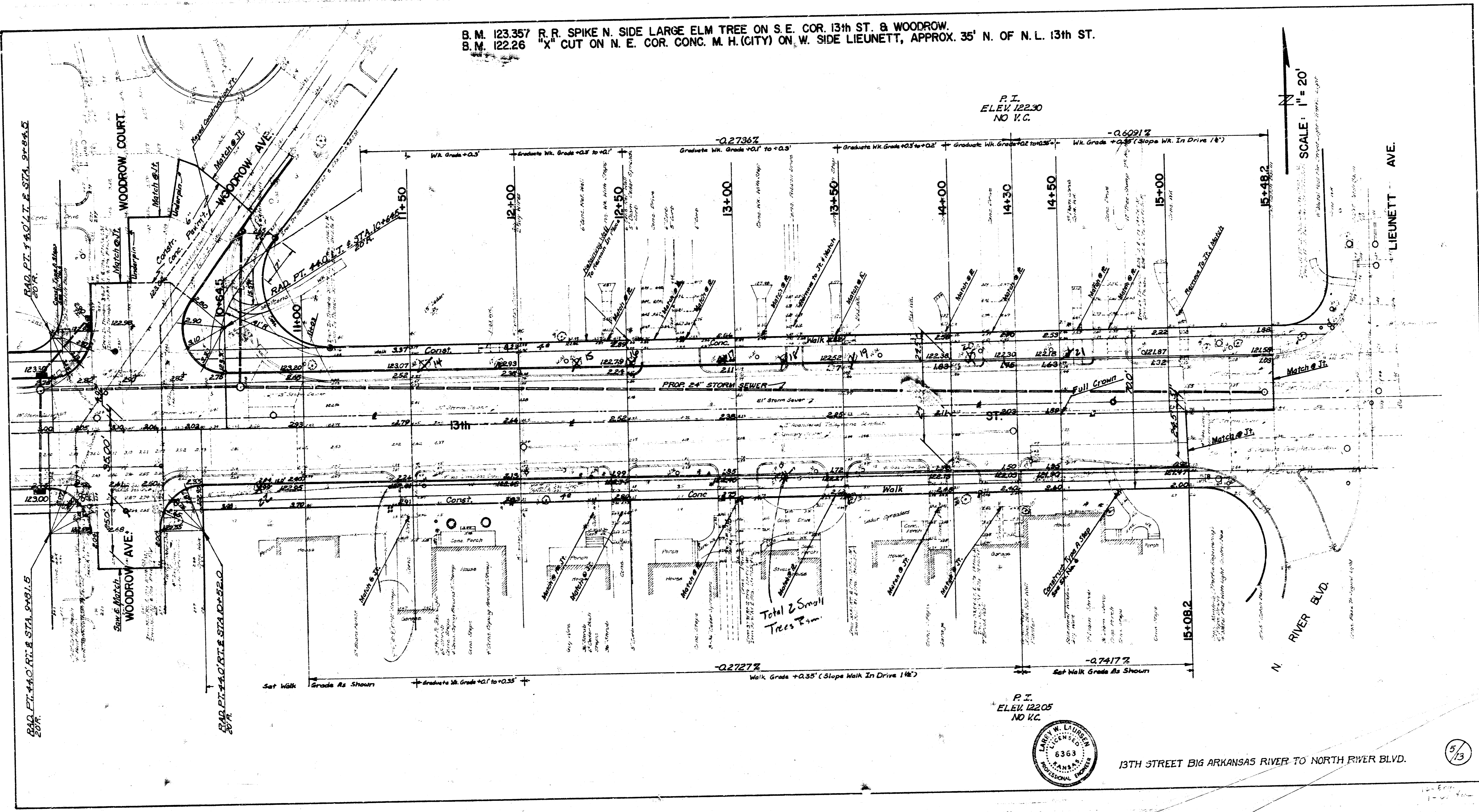


13TH STREET BIG ARKANSAS RIVER TO NORTH RIVER BLVD.

B. M. 123.357 R.R. SPIKE N. SIDE LARGE ELM TREE ON S.E. COR. 13th ST. & WOODROW.
B. M. 122.26 "X" CUT ON N. E. COR. CONC. M. H. (CITY) ON W. SIDE LIEUNETT, APPROX. 35' N. OF N. L. 13th ST.

P. I.
ELEV. 122.30
NO V.C.

SCALE: 1" = 20'

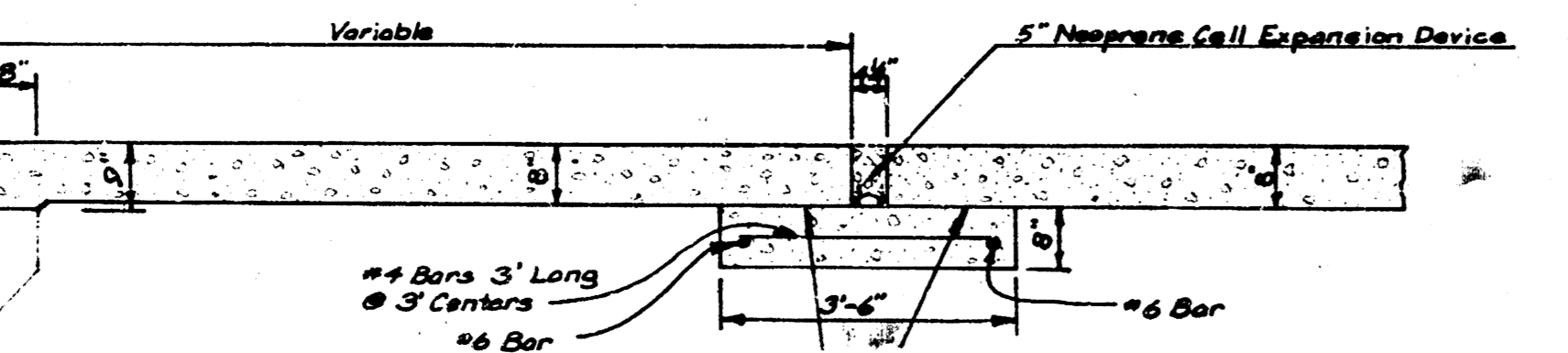
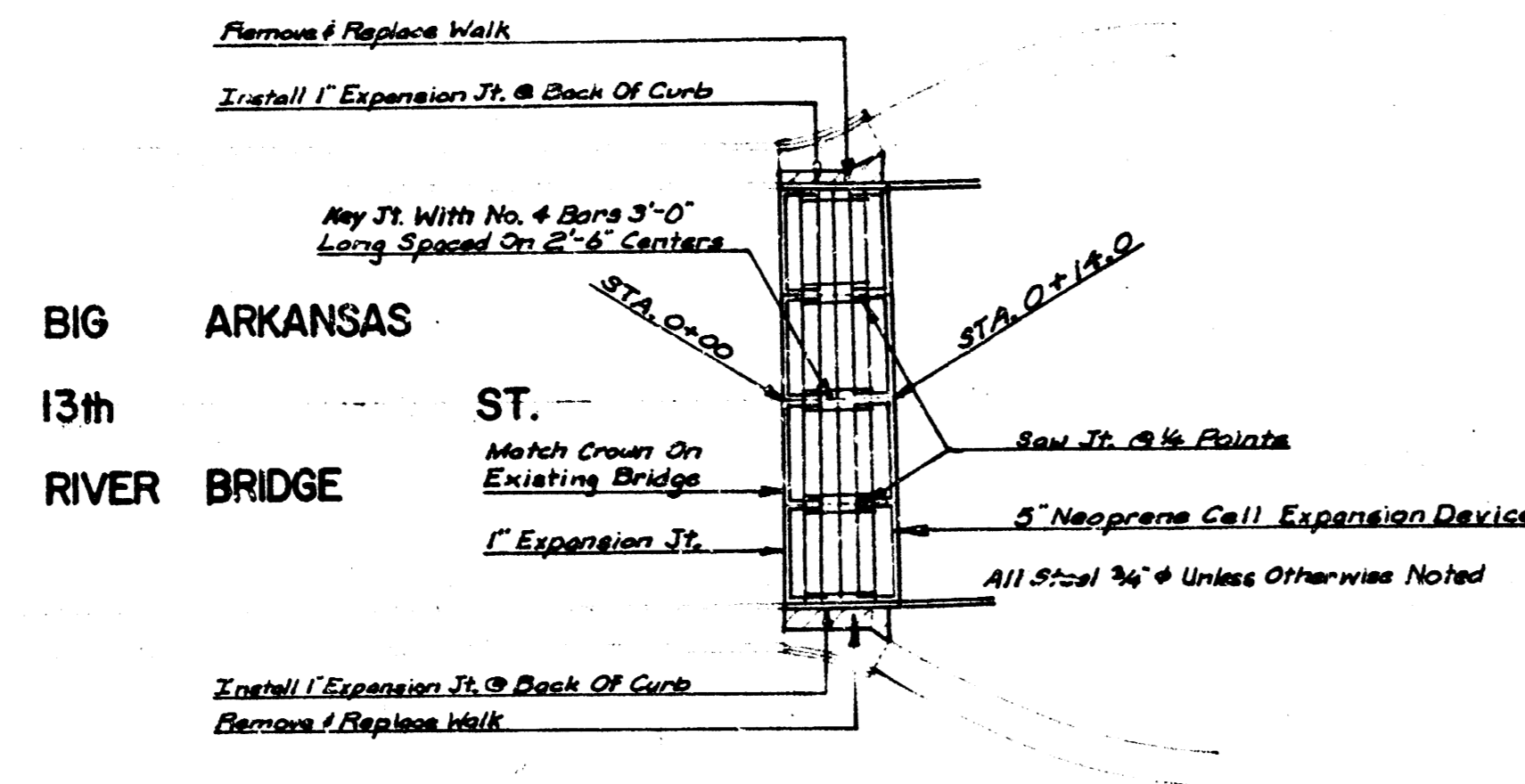


P. I.
ELEV. 122.05
NO V.C.

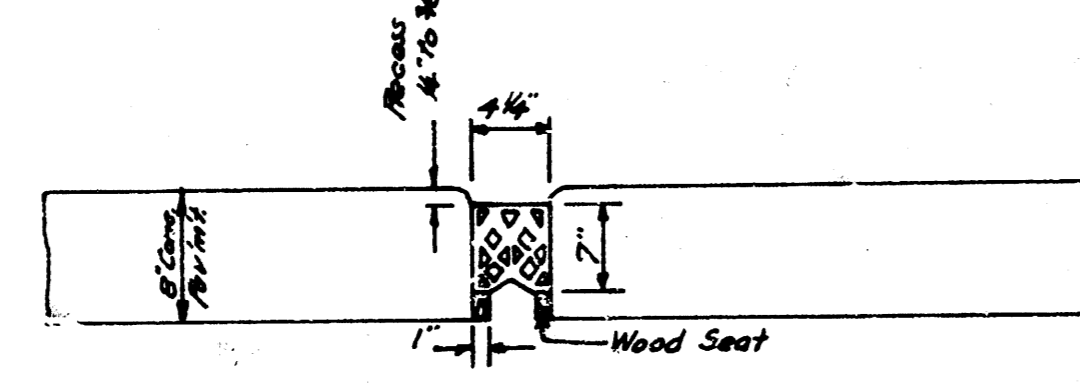


13TH STREET BIG ARKANSAS RIVER TO NORTH RIVER BLVD.

5/13



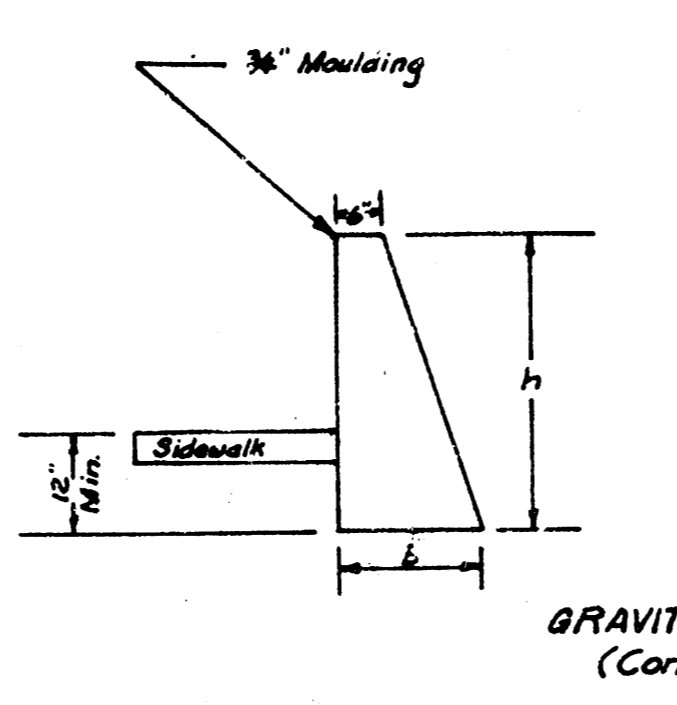
NOTE: Extra Thickness Between Bridge Abutment #8 Concrete Pavement Is Incidental To Bid Price Of #8 Concrete Pavement. All Excavation For Extra Thickness Between Bridge Abutment #8 Concrete Pavement Is Incidental To The Bid Price Of #8 Concrete Pavement.



Install 5" Wide Preformed Open Cell Neoprene Joint Seal. Use "I" Series Dektastic Bridge Seal Catalog No. 11-3000, D. S. Brown Co. Or An Approved Equal.

The Neoprene Joint Material Shall Be Machine Installed With Equipment Capable Of Placing The Strips At The Specified Depth Without Increasing Or Decreasing The Length As Taken From The Roll Or Box By More Than 5%. No Splices Will Be Permitted Across The Roadway. 6" Long Sections Are To Be Installed Vertical In The Curb Section Of The Roadway Pavement. The Seals Shall Be Secured In Place With An Approved Lubricant Adhesive Which Shall Cover Both Sides Of The Seal Over The Full Contact Area. The Seals And Installation Shall Not Be Paid For Directly, But Shall Be Subsidiary To The Bid Item Of #8 Concrete Pavement.

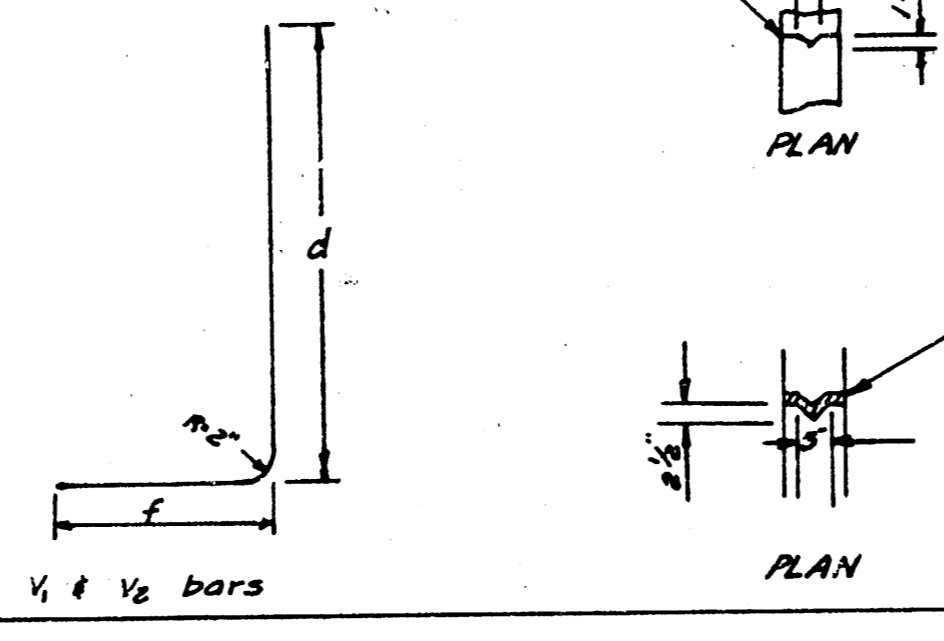
EXPANSION DEVICE DETAILS



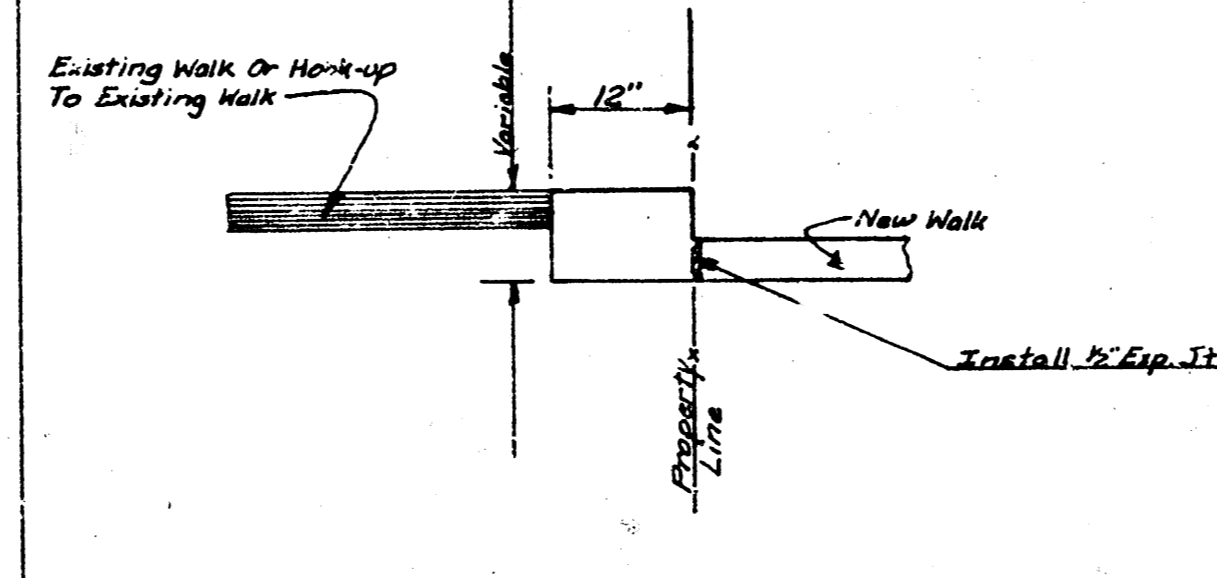
CLASS	DIMENSIONS	Cu. Yds.
A	1'-9" x 11"	.046
B	2'-0" x 15"	.059
C	2'-4" x 17"	.089
	2'-9" x 18 1/2"	.104
	3'-0" x 20"	.120

GRAVITY TYPE (Concrete)

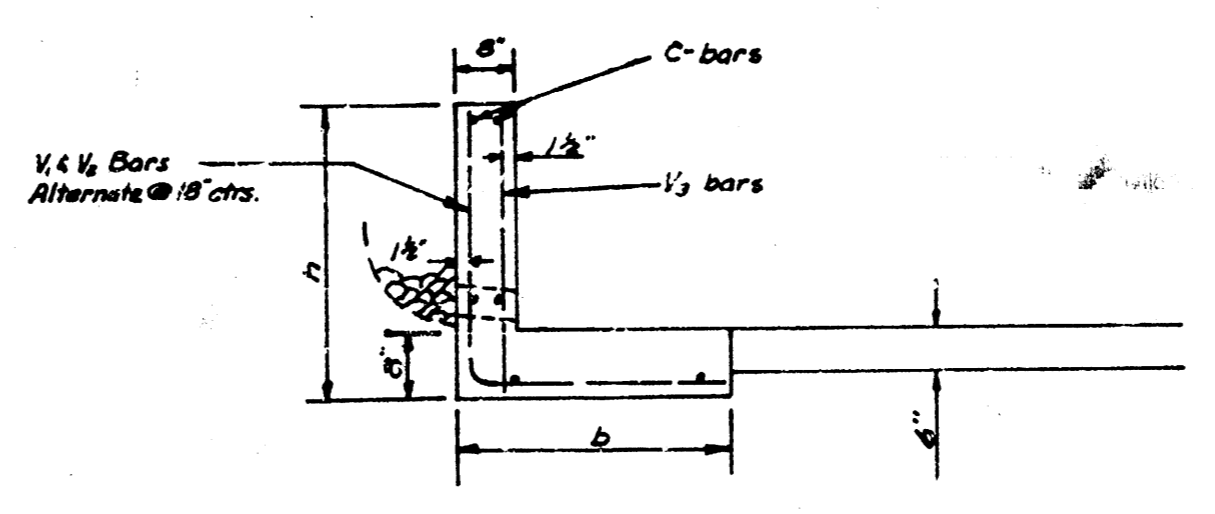
Construct Tar Paper & Keyed Construction Joints @ 20' Intervals. Discontinue Reinf. Steel In L-Type Retaining Walls.



TYPE A STEP DETAIL



CLASS	DIMENSIONS	PER LIN. FT. OF WALL
	h b	"Min." Sll. 1/2 Cu. Yds.
A	1'-6" x 1'-4"	2.674 .008
	1'-9" x 1'-8"	3.894 .070
	2'-0" x 2'-0"	4.120 .083
B	2'-5" x 2'-5"	6.179 .055
	2'-6" x 2'-6"	6.485 .107
	2'-9" x 2'-9"	6.792 .120
C	3'-0" x 3'-0"	7.097 .132



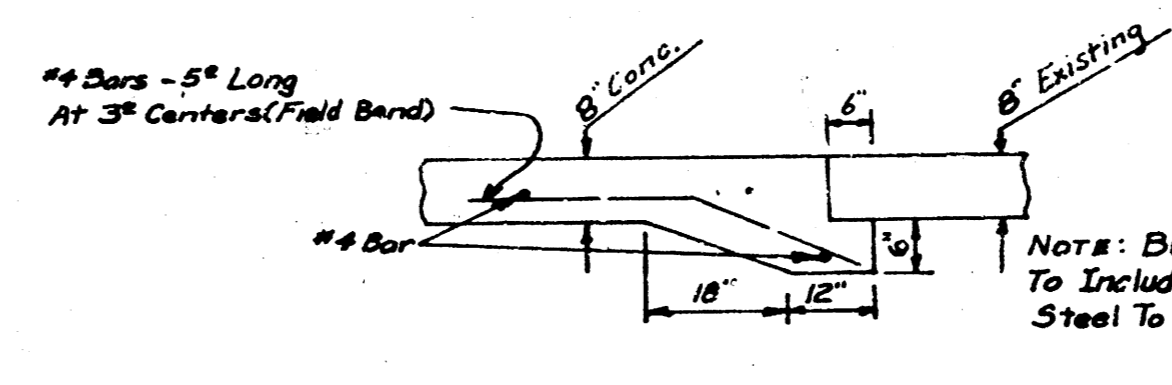
L-TYPE RETAINING WALL FOR DRIVEWAYS

Expansion Joints @ 100' Maximum Spacing. 1" Preformed Exp. Jt. Material. Discontinue Reinf. Steel.

REINF. STEEL SCHEDULE							
L-TYPE RETAINING WALL FOR DRIVEWAYS							
h	bar	size	cutting length	spacing	d	f	Remarks
1'-6"	V	1/2"	6'-3"	18"	1'-1"	1'-3"	L Shape Straight
	C	1/2"	6'-3"	18"	1'-1"	1'-3"	L Shape Straight
1'-9"	V	1/2"	6'-3"	18"	1'-1"	1'-6"	L Shape Straight
	C	1/2"	6'-3"	18"	1'-1"	1'-6"	L Shape Straight
2'-0"	V	1/2"	6'-3"	18"	1'-1"	1'-9"	L Shape Straight
	C	1/2"	6'-3"	18"	1'-1"	1'-9"	L Shape Straight
2'-3"	V	1/2"	6'-3"	18"	1'-1"	2'-0"	L Shape Straight
	C	1/2"	6'-3"	18"	1'-1"	2'-0"	L Shape Straight
2'-6"	V	1/2"	6'-3"	18"	1'-1"	2'-3"	L Shape Straight
	C	1/2"	6'-3"	18"	1'-1"	2'-3"	L Shape Straight
2'-9"	V	1/2"	6'-3"	18"	1'-1"	2'-6"	L Shape Straight
	C	1/2"	6'-3"	18"	1'-1"	2'-6"	L Shape Straight
3'-0"	V	1/2"	6'-3"	18"	1'-1"	2'-9"	L Shape Straight
	C	1/2"	6'-3"	18"	1'-1"	2'-9"	L Shape Straight

NOTE: All excavation for retaining walls shall be included in the bid price per lin. ft. of retaining wall. The 1" tile weep holes & crushed rock or coarse gravel for drainage, shall be included in the bid price per lin. ft. of retaining wall.

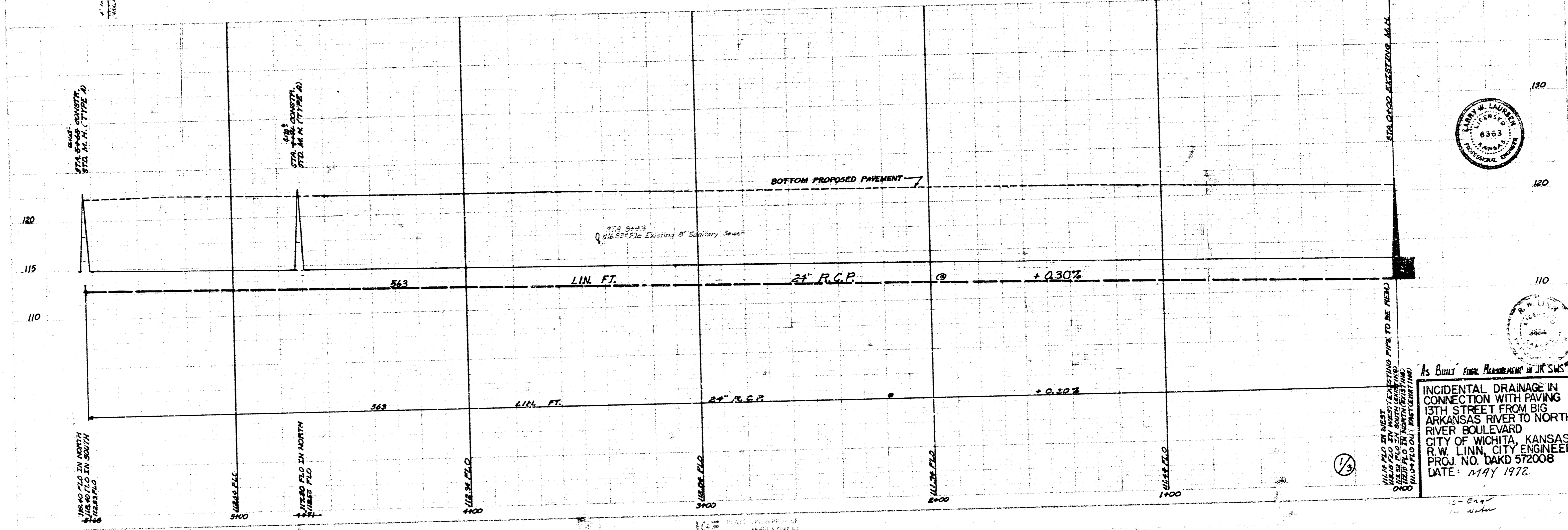
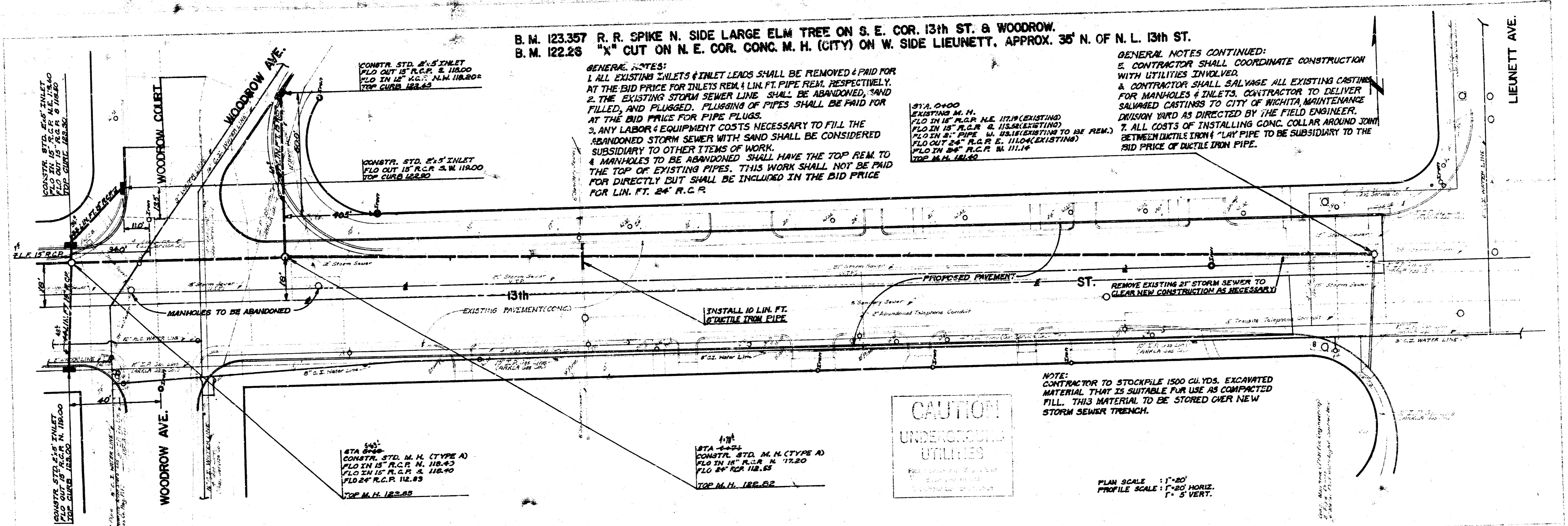
Note: The Field Engineer shall final measure retaining walls prior to backfill operations.



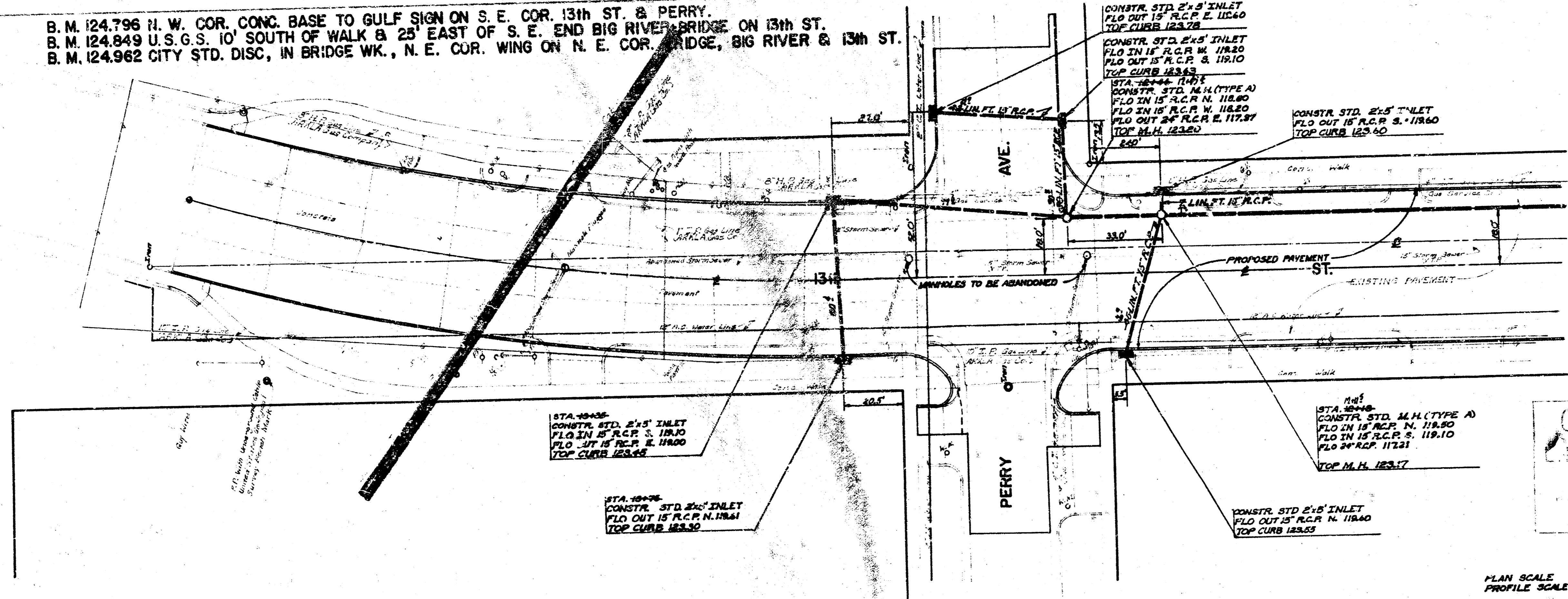
"UNDER-PINNING" DETAIL

Note: Bid Item For "L.F. Under-Pinning" To Include Cost Of Concrete & Excavation. Steel To Be Paid As Lbs. Of Reinf. Steel.



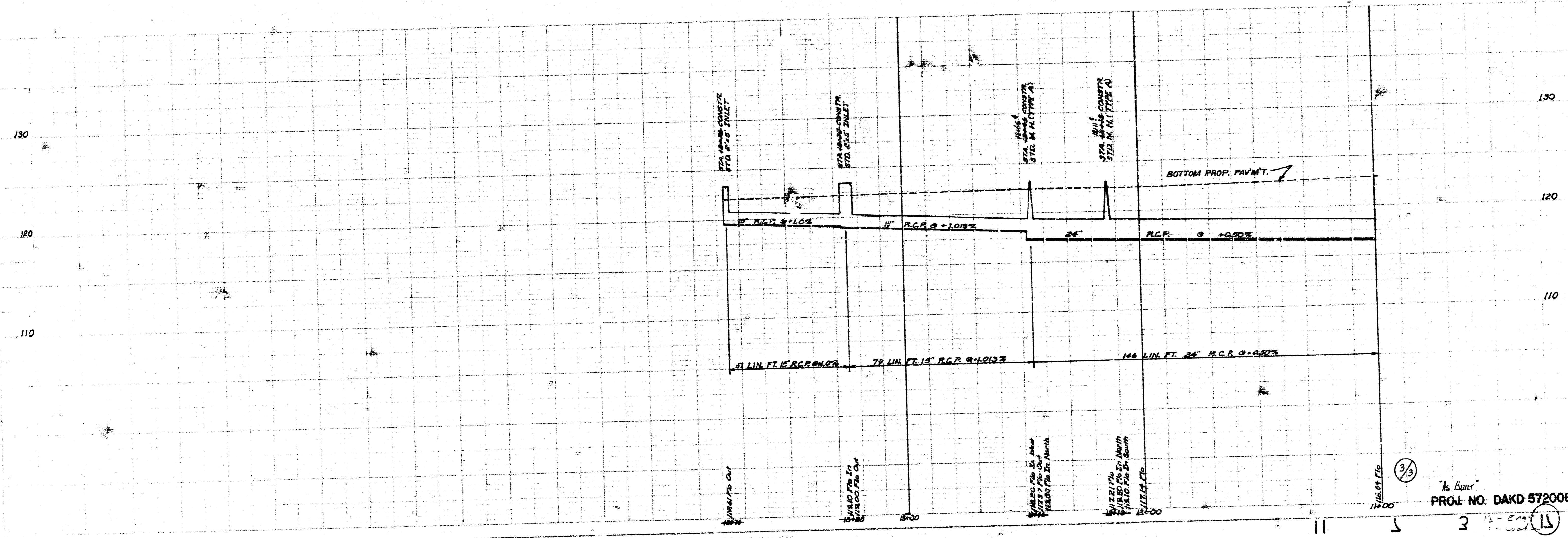


B. M. 124.796 H. W. COR. CONC. BASE TO GULF SIGN ON S. E. COR. 13th ST. & PERRY.
 B. M. 124.849 U.S.G.S. 10' SOUTH OF WALK & 25' EAST OF S. E. END BIG RIVER BRIDGE ON 13th ST.
 B. M. 124.962 CITY STD. DISC. IN BRIDGE WK., N. E. COR. WING ON N. E. COR. BRIDGE, BIG RIVER & 13th ST.



CAUTION
 UNDESIGNED
 UTILITIES

PLAN SCALE 1" = 20'
 PROFILE SCALE 1" = 20' HORIZ.
 1" = 5' VERT.



As Built
 PROJ. NO. DAKD 572008

3/5

11 5 3 15 15