

NOTE - ACT #4 IN LEG. REVOL

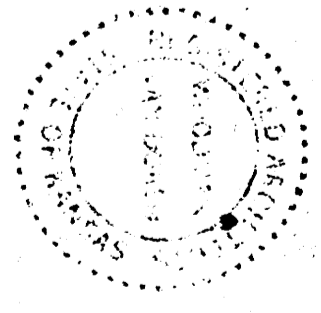
SITE PLAN
SCALE 1/8" = 1'-0"

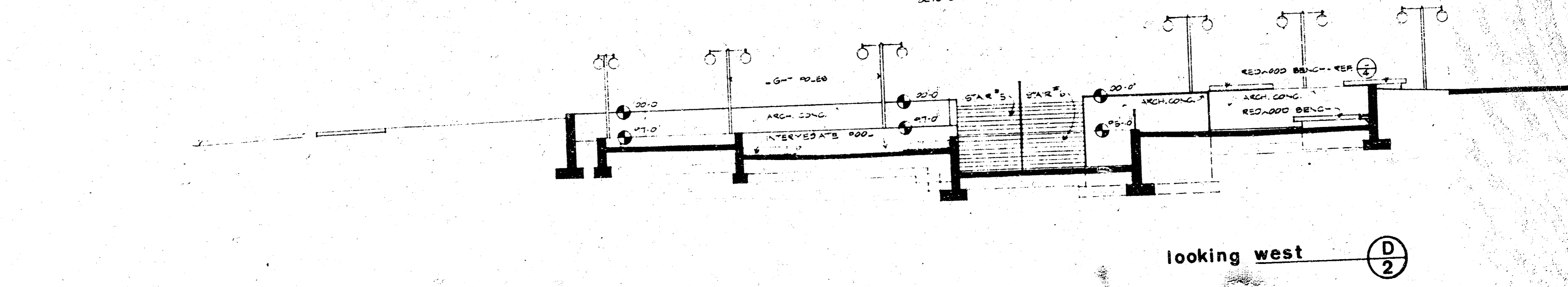
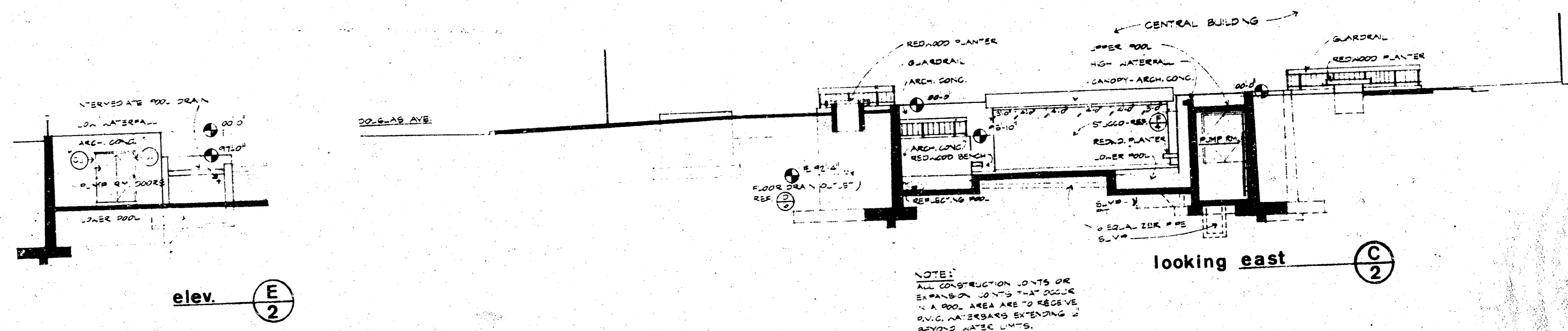
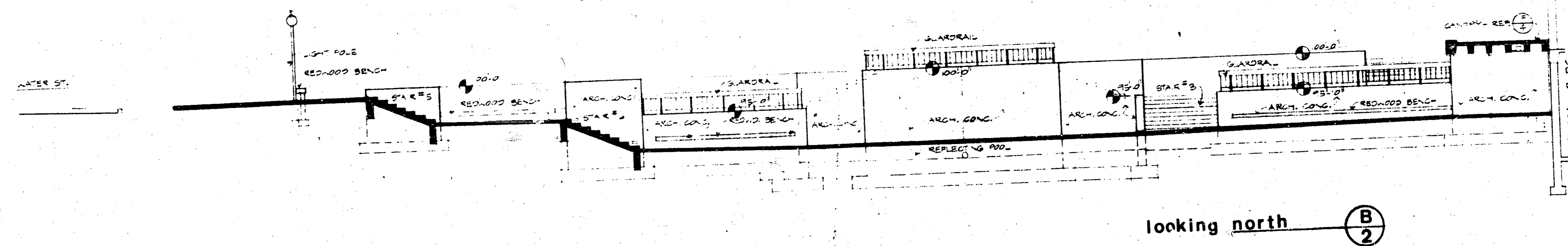
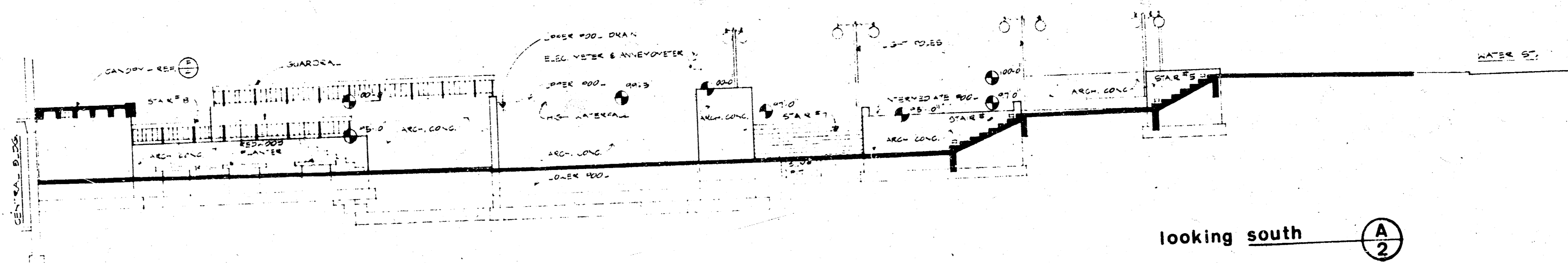
1

2 DECEMBER 1965
SITE PLAN

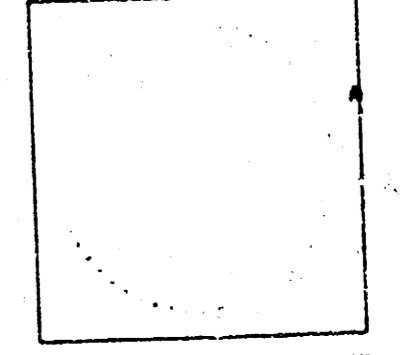
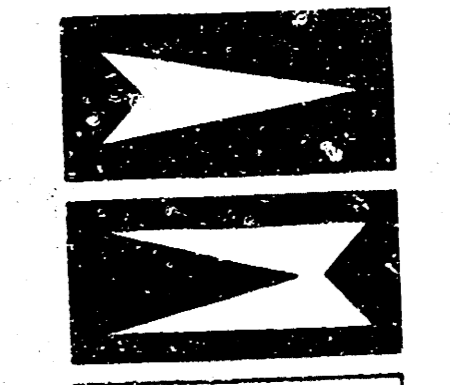
CIVIC CENTER PARK
WICHITA KANSAS

WOODMAN - VAN DOREN
ARCHITECTS
WICHITA KANSAS

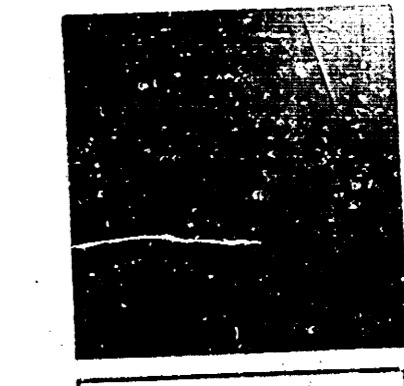




elev. **E/2**



WOODMAN-VAN DOREN
ARCHITECTS
WICHITA, KANSAS



CIVIC CENTER PARK
WICHITA, KANSAS

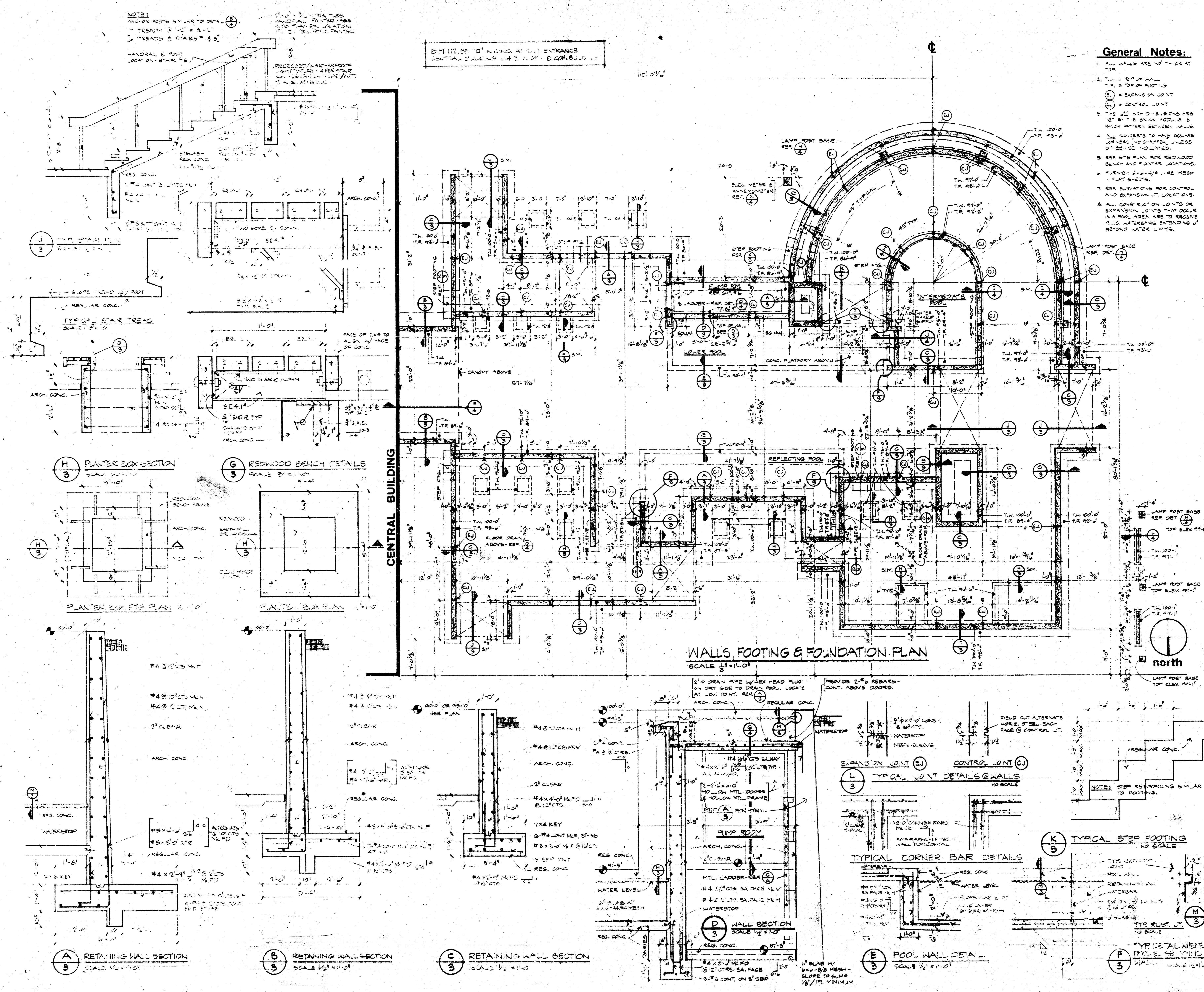
CIVIC CENTER PARK
WICHITA, KANSAS

CIVIC CENTER PARK
WICHITA, KANSAS

CIVIC CENTER PARK
WICHITA, KANSAS

CIVIC CENTER PARK
WICHITA, KANSAS

2 DECEMBER 1968
ELEVATIONS



NOTE:
 1. ALL ROOF SLOPE TO DETAIL
 2. REBAR #4 @ 12" O.C.
 3. REBAR #4 @ 12" O.C.

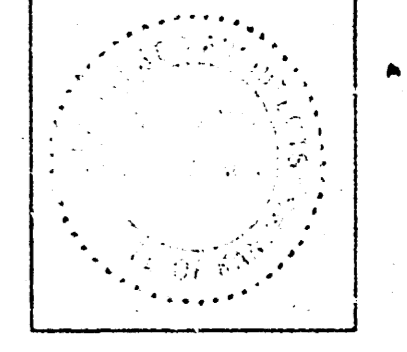
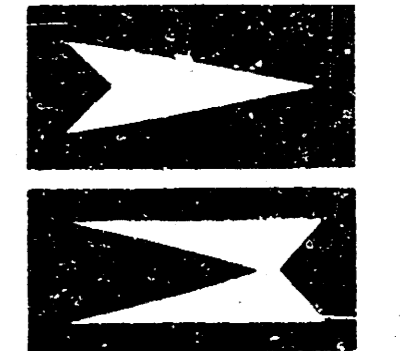
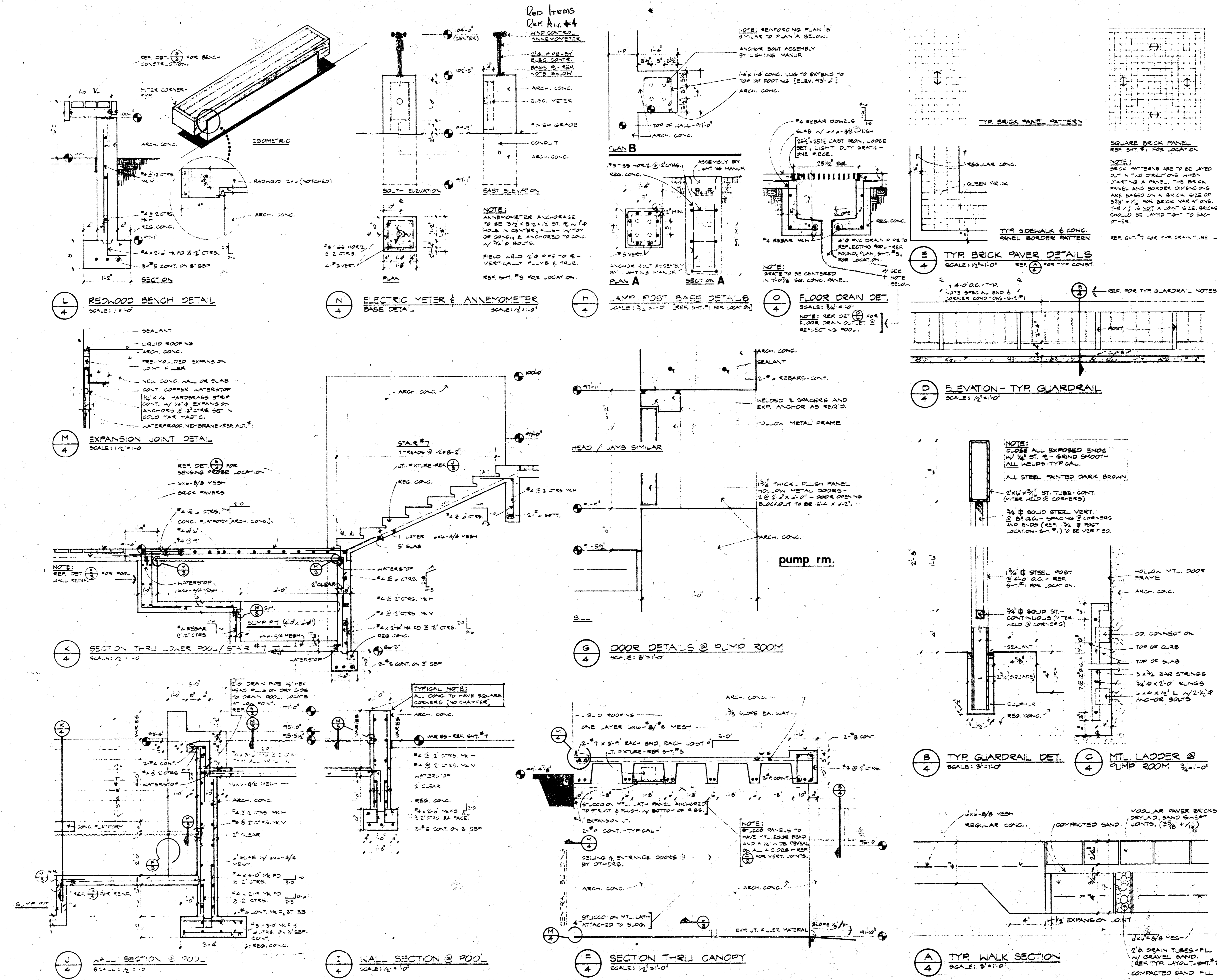
B.M. 112.85' FINISH AT GROUND ENTRANCE
 CENTRAL BUILDING 114.5' FINISH ELEVATION

- General Notes:**
1. ALL WALLS ARE TO BE AT 112.85'
 2. ALL ROOF SLOPE TO DETAIL
 3. REBAR #4 @ 12" O.C.
 4. ALL JOINTS TO BE CONTROL JOINTS
 5. SEE SITE PLAN FOR REDWOOD BENCH AND PLANTER LOCATIONS
 6. REBAR #4 @ 12" O.C. IN ALL WALLS UNLESS OTHERWISE NOTED
 7. SEE ELEVATIONS FOR CONTROL AND EXPANSION JOINT LOCATIONS
 8. ALL CONSTRUCTION JOINTS OR EXPANSION JOINTS THAT OCCUR IN A POOL AREA ARE TO BE REBAR #4 WATERBARS EXTENDING BEYOND WATER LEVELS

**WOODMAN · VAN GOREN
 ARCHITECTS
 WICHITA KANSAS**

**CIVIC CENTER PARK
 WICHITA KANSAS**

2 DECEMBER 1968
 STRUCTURAL
3

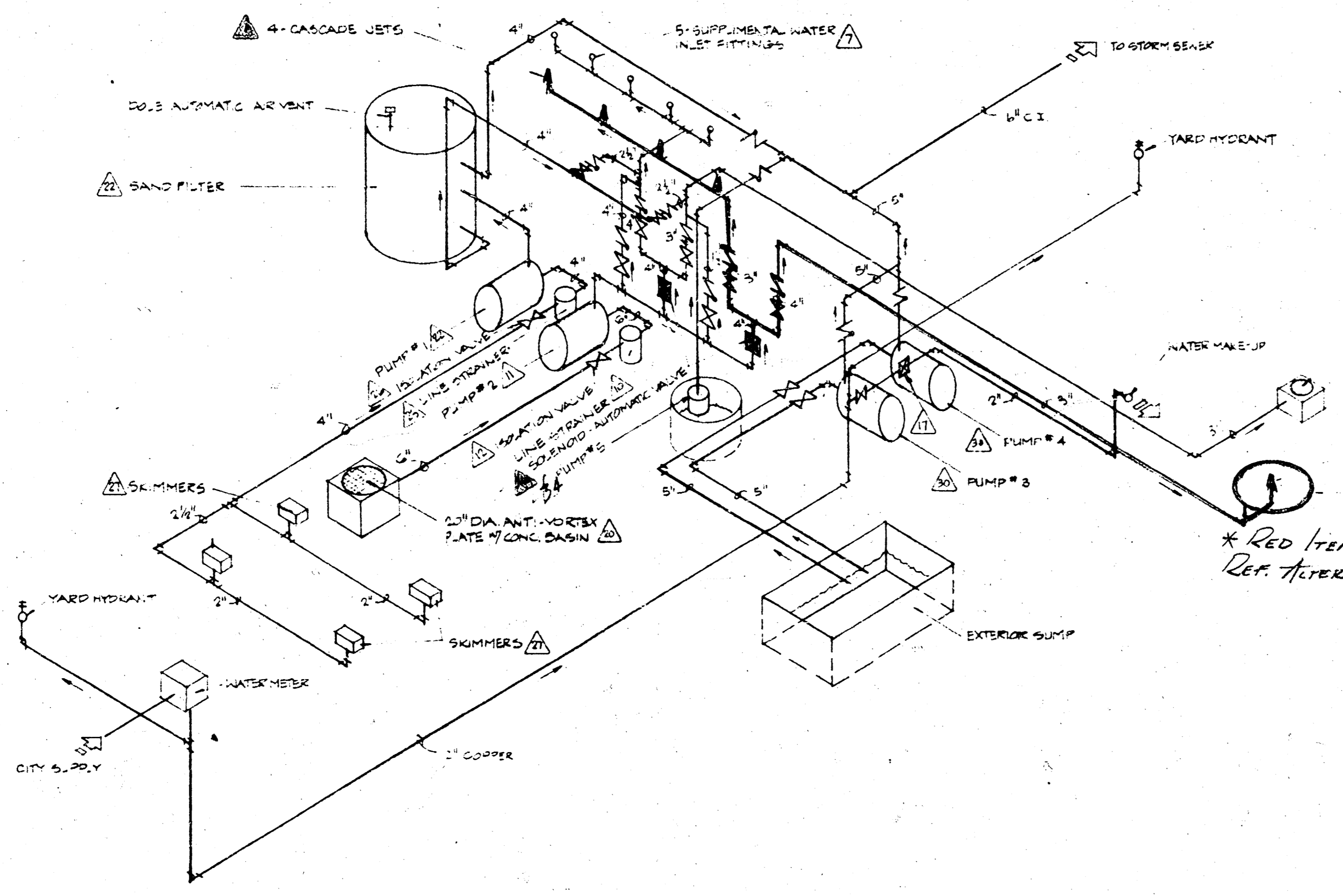


WOODMAN VAN DOREN
ARCHITECTS
WICHITA KANSAS

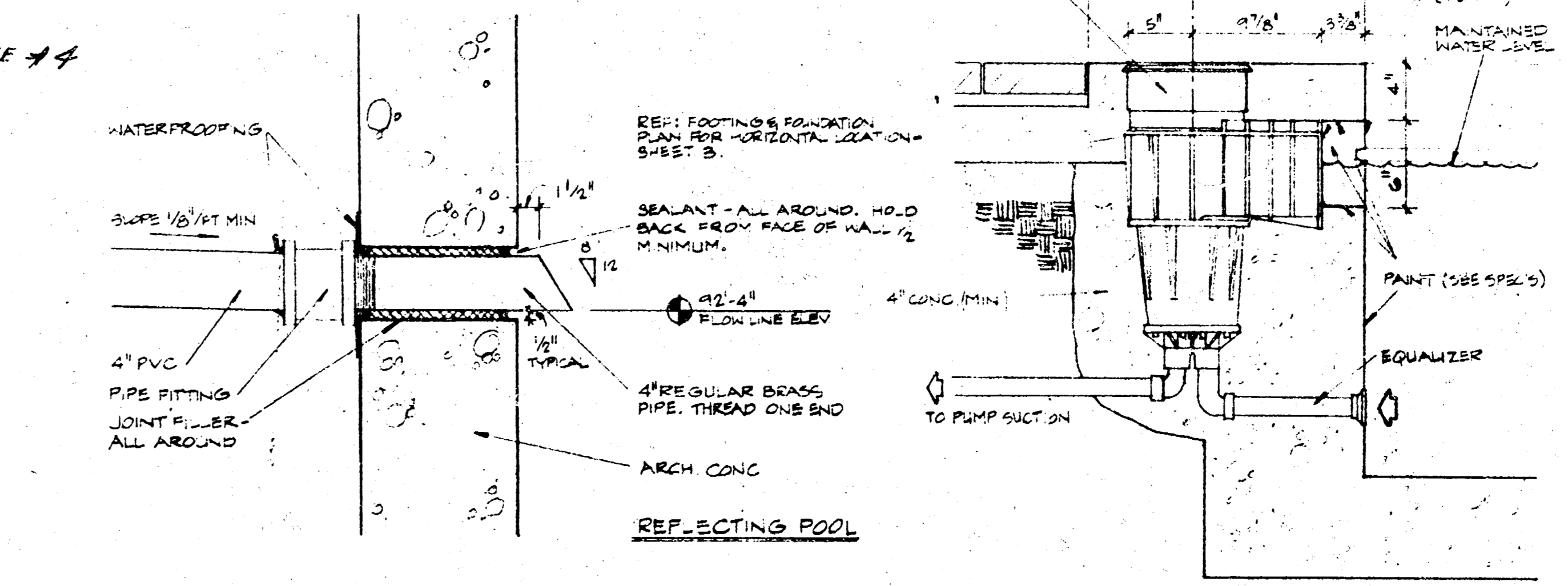
CIVIC CENTER PARK
WICHITA KANSAS

2 DECEMBER 1914
DETAILS

4

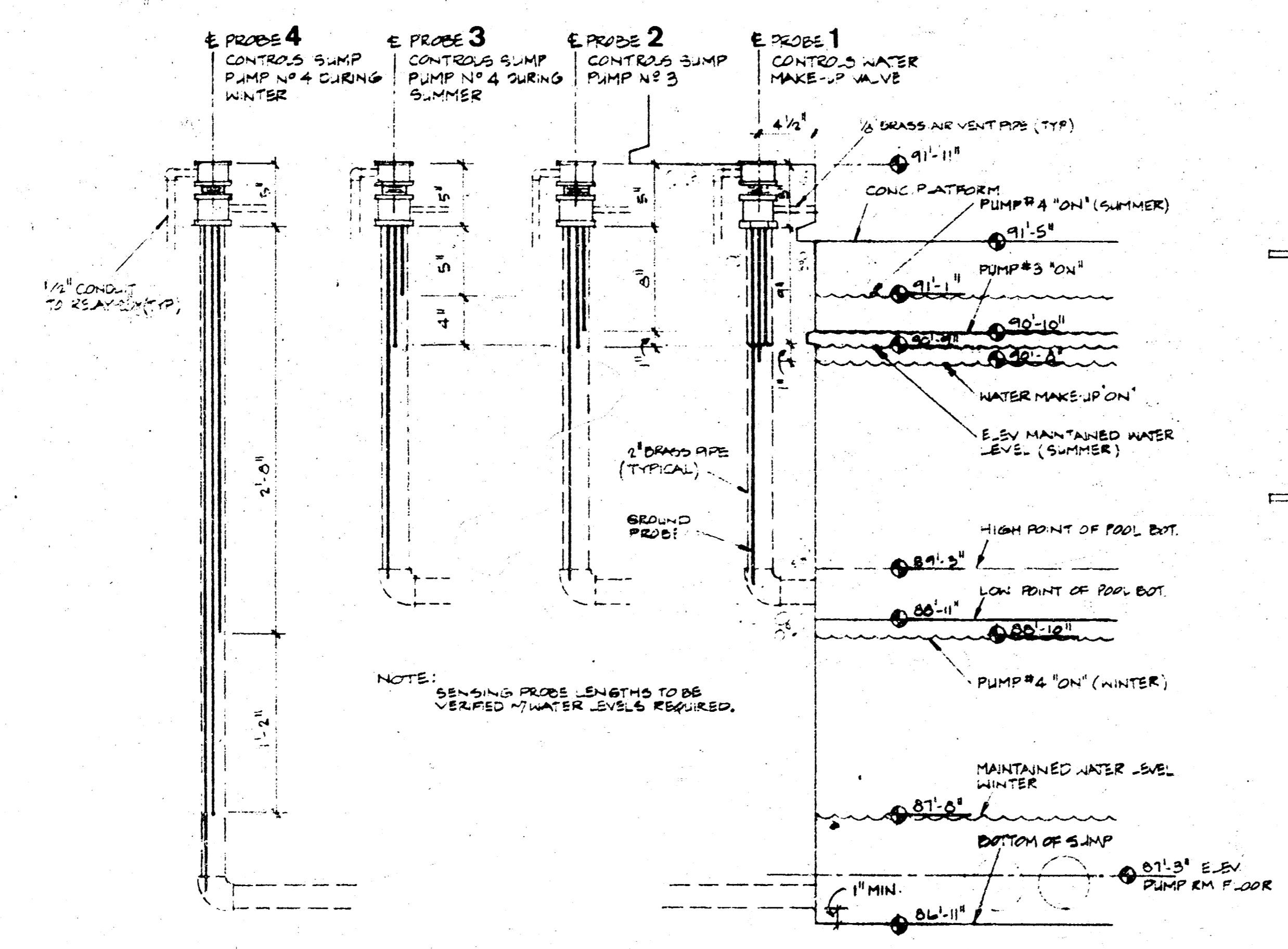


(C) SCHEMATIC PIPING DIAGRAM
SYMMETRIC

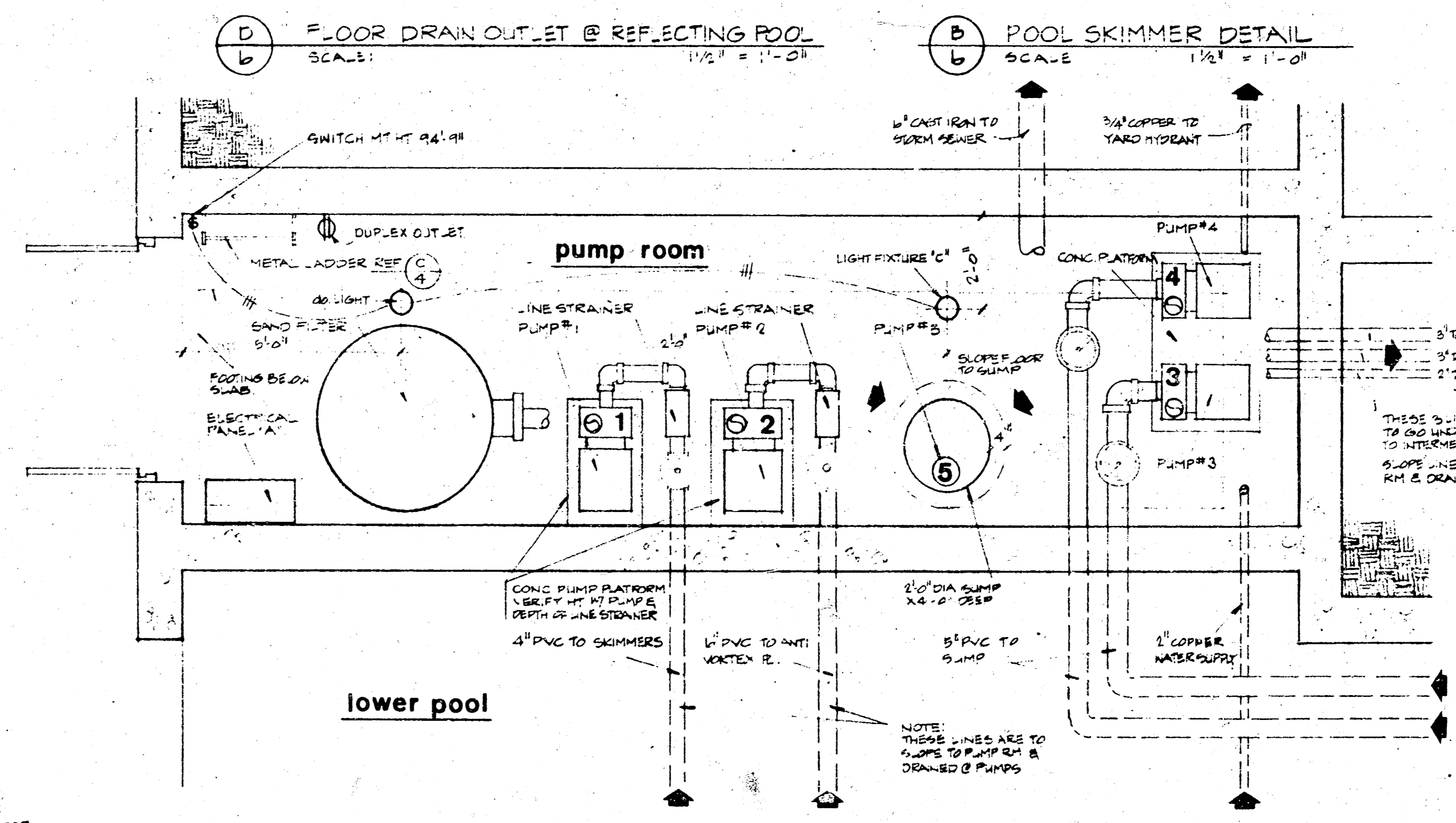


(D) FLOOR DRAIN OUT-LET @ REFLECTING POOL
SCALE: 1/2" = 1'-0"

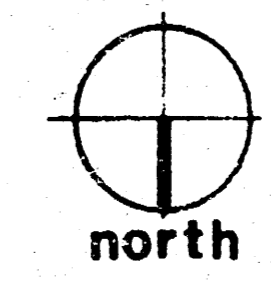
(B) POOL SKIMMER DETAIL
SCALE: 1/2" = 1'-0"



(E) WATER LEVEL SENSING PROBE DETAILS
SCALE: 1/2" = 1'-0"



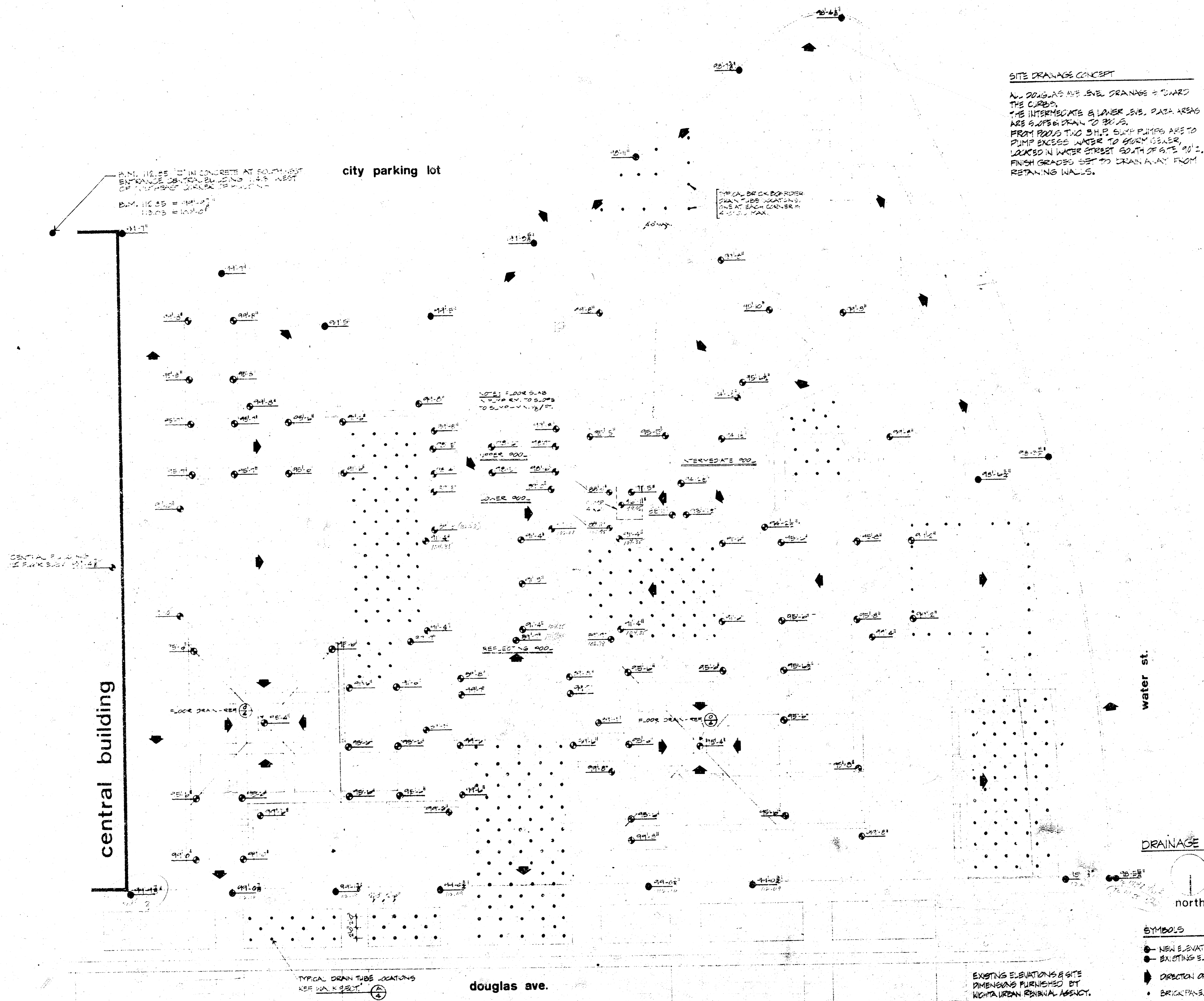
(A) FLOOR PLAN / PUMP ROOM
SCALE: 1/2" = 1'-0"



WOODMAN-VAN DOREN
ARCHITECTS
WICHITA KANSAS

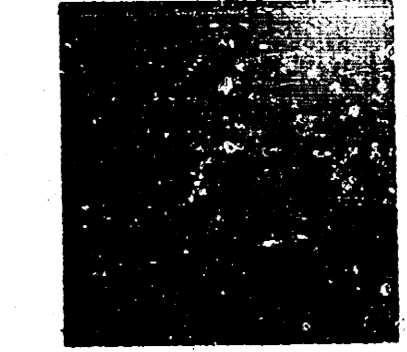
CIVIC CENTER PARK
WICHITA KANSAS

2 DECEMBER 2008
PUMP ROOM
PIPING DIAGRAM



SITE DRAINAGE CONCEPT
 N. DOUGLAS AVE LEVEL DRAINAGE TOWARD THE CURB.
 THE INTERMEDIATE & LOWER SUB. DATA AREAS ARE SUITED DRAIN TO BRICK FROM ROOFS THRU S.H.P. SUMP PUMPS ARE TO PUMP EXCESS WATER TO STORM SEWER, LOCATED IN WATER STREET SOUTH OF SITE. FINISH GRADES SET TO DRAIN AWAY FROM RETAINING WALLS.

WOODMAN • VAN DOREN ARCHITECTS WICHITA KANSAS



CIVIC CENTER PARK WICHITA KANSAS

2 DECEMBER 1968
 DRAINAGE PLAN

SYMBOLS

- NEW ELEVATIONS
- EXISTING ELEVATIONS
- ➔ DIRECTION OF DRAINAGE
- BRICK PANE DRAIN

EXISTING ELEVATIONS & SITE DIMENSIONS FURNISHED BY WICHITA URBAN REVENUE AGENCY.