

MATCH LINE 2

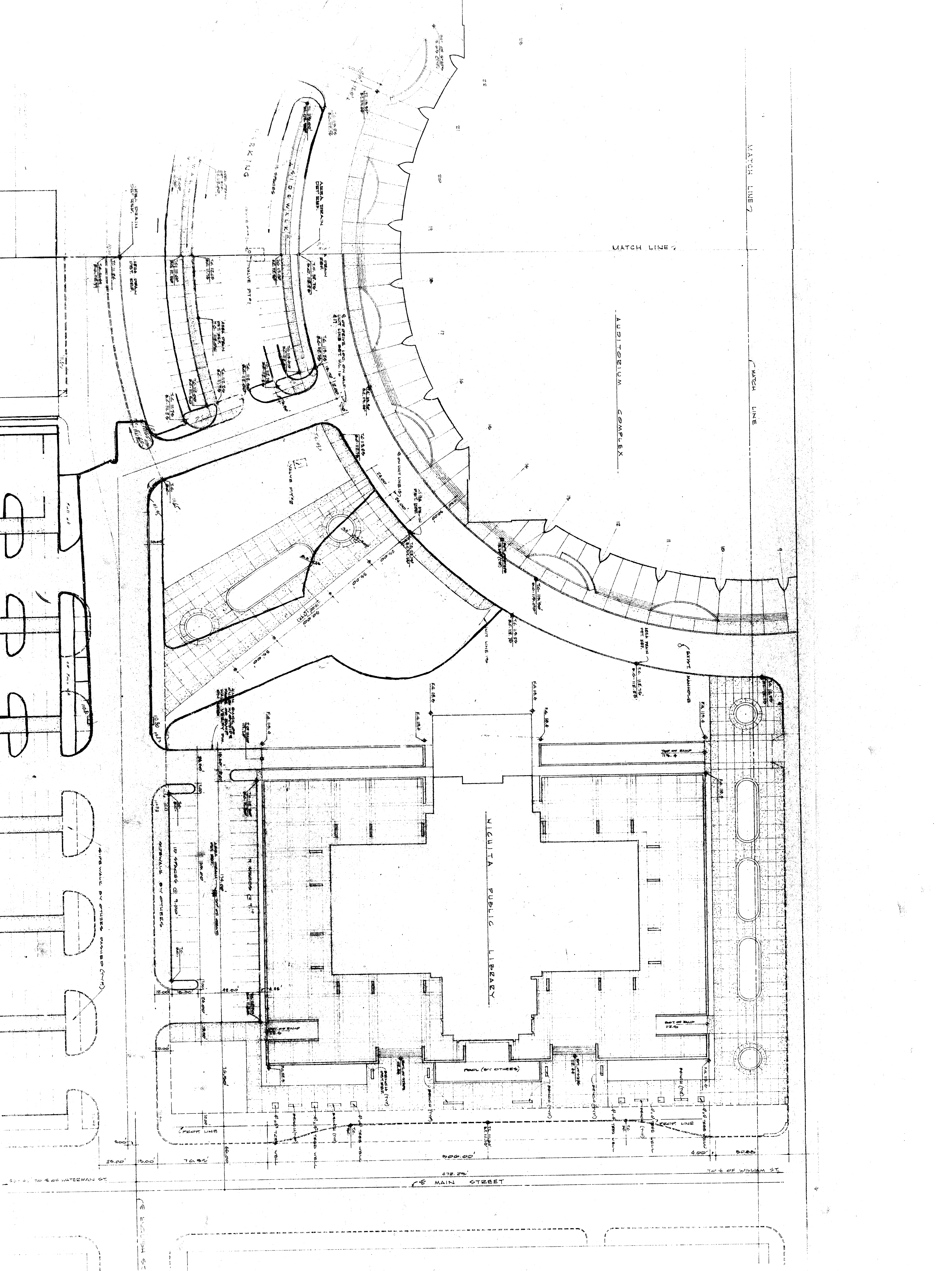
MATCH LINE

MATCH LINE 1

AUDITORIUM COMPLEX

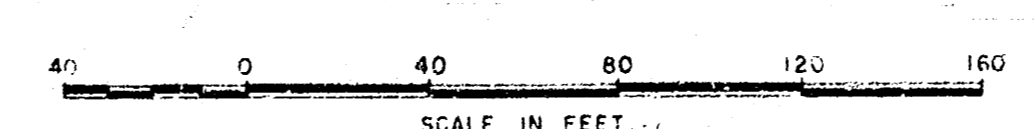
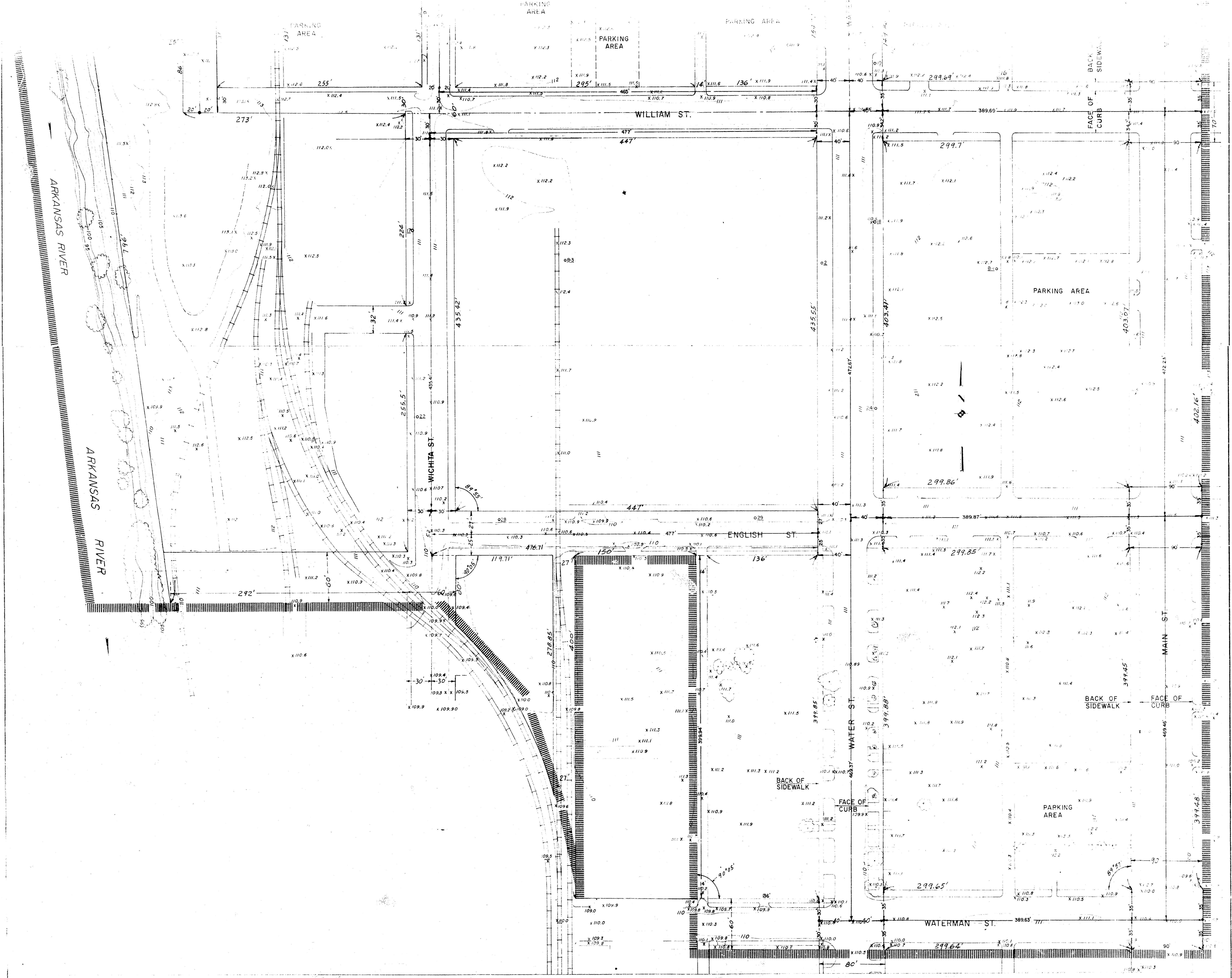
WICHITA PUBLIC

FLAN #4



DEVELOPMENT #1
 CIVIC CULTURAL CENTER
 CITY OF WICHITA, KANSAS

JOHN M. HICKMAN ASSOCIATES
 BOYKIN, KAY, VARENHORN &
 PROJECT ARCHITECTS



NOTE
 Topography by Servus, Van Doren & Hazard, Engineers of Topeka, Kansas, by a standard photogrammetric process from aerial photographs taken by Aerial Photo Service of Tulsa, Oklahoma on 17 March 1963.

DIMENSIONS

TOPOGRAPHIC SURVEY
 CIVIC CENTER
 FOR THE

