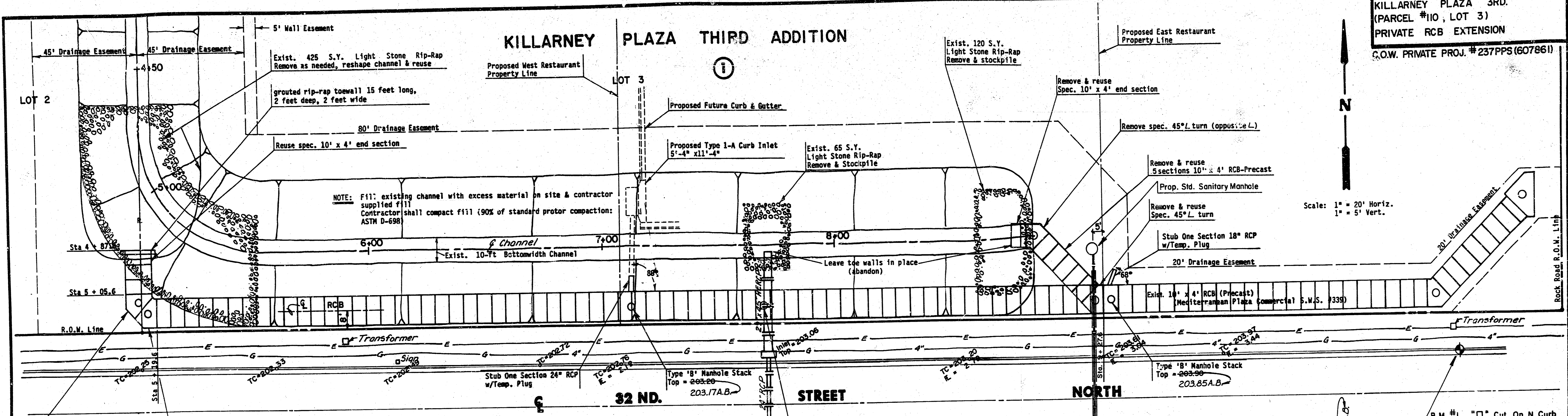


KILLARNEY PLAZA 3RD.
(PARCEL #10, LOT 3)
PRIVATE RCB EXTENSION
G.O.W. PRIVATE PROJ. #237PPS (607861)

KILLARNEY PLAZA THIRD ADDITION



Scale: 1" = 20' Horiz.
1" = 5' Vert.

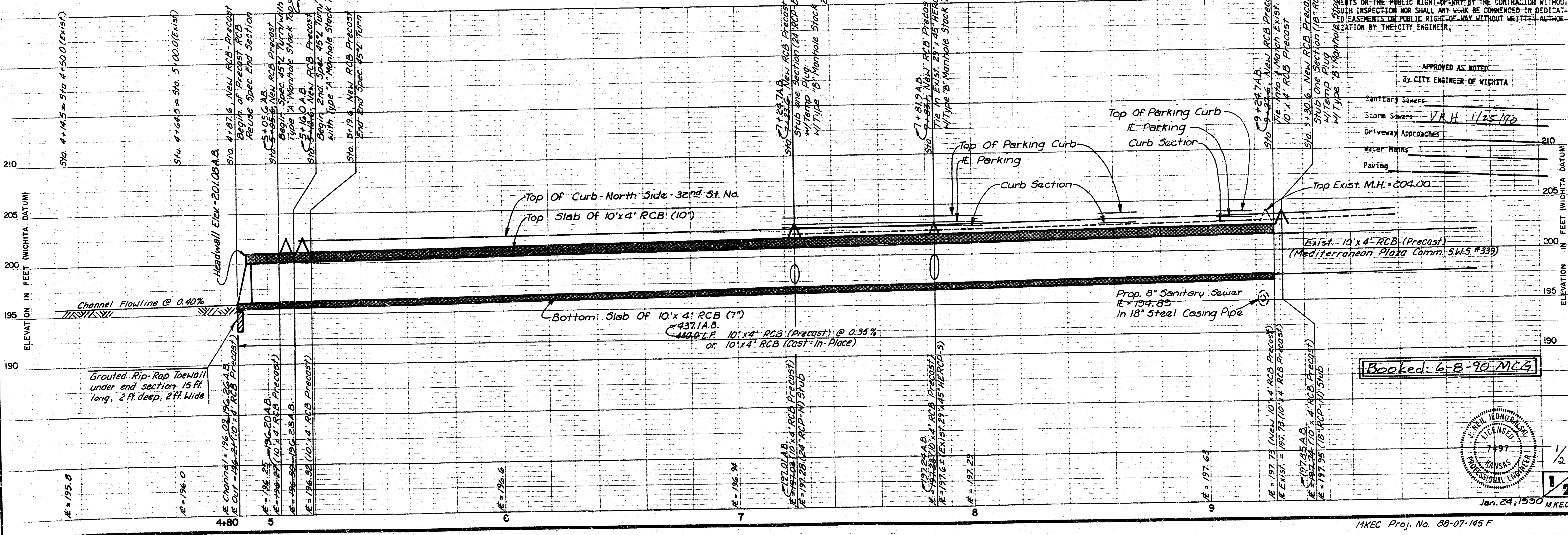
NOTE: Fill existing channel with excess material on site & contractor supplied fill. Contractor shall compact fill (90% of standard proctor compaction: ASTM D-698)

RCB NOTE: Precast Barrel Sections: The precast concrete barrel sections shall conform to the ASTM C-850 specifications. If contractor decides to build cast-in-place RCB, plans need to be reviewed by the engineer. RCB may be extended again in future. Cost of special 45° L turns shall be included in the linear foot cost of the precast 10' x 4' RCB

Remove excess 29" x 45" HERCP. Need to tie exist 29" x 45" HERCP into new 10' x 4' RCB. And provide type 'B' manhole stack access point Top = 203.20

New spec 45° L turn/with type 'A' manhole stack Top of manhole = 202.80

Reuse spec 45° L turn/with type 'A' manhole stack Top of manhole = 202.50

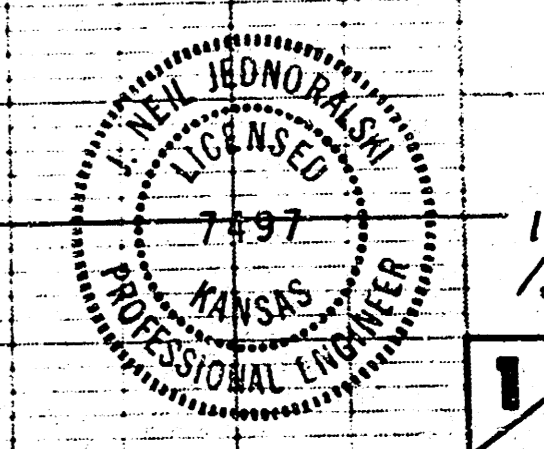


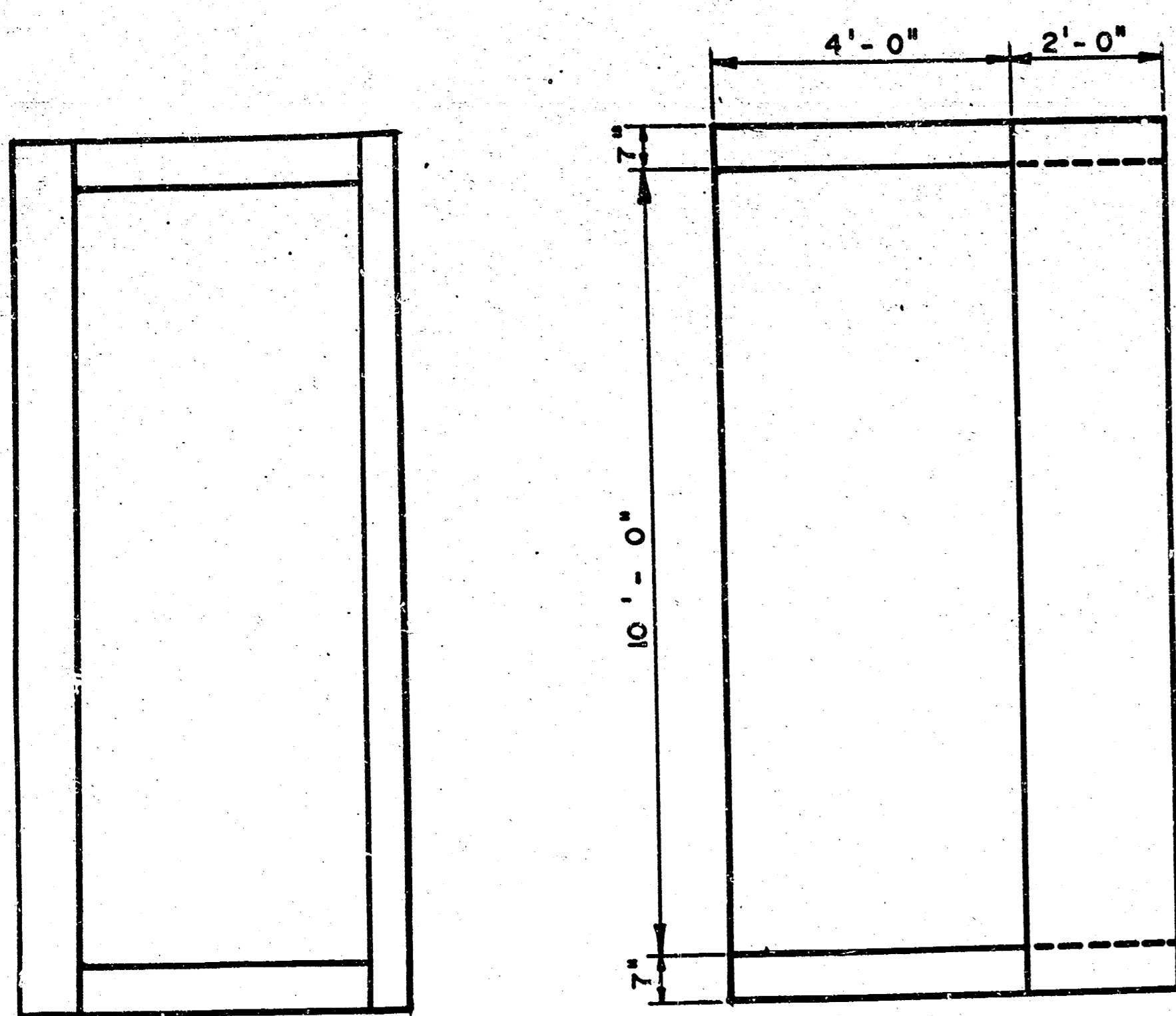
NOTE TO CONTRACTOR: INSPECTION AND TESTING FOR THIS PROJECT IS TO BE PROVIDED BY A LICENSED CONSULTING ENGINEERING FIRM UNDER CONTRACT WITH THE OWNER/DEVELOPER. SAID INSPECTION TO BE IN ACCORDANCE WITH THE CITY OF WICHITA STANDARD CONSTRUCTION ENGINEERING PRACTICES AND CERTIFIED BY A LICENSED PROFESSIONAL ENGINEER. NO WORK SHALL BE PERFORMED IN DEDICATED EASEMENTS OR THE PUBLIC RIGHT-OF-WAY BY THE CONTRACTOR WITHOUT WHICH INSPECTION NOR SHALL ANY WORK BE COMMENCED IN DEDICATED EASEMENTS OR PUBLIC RIGHT-OF-WAY WITHOUT WRITTEN AUTHORIZATION BY THE CITY ENGINEER.

APPROVED AS NOTED
By CITY ENGINEER OF WICHITA

Sanitary Sewers	
Storm Sewers	V.R.H. 1/25/90
Driveway Approaches	
Water Mains	
Paving	

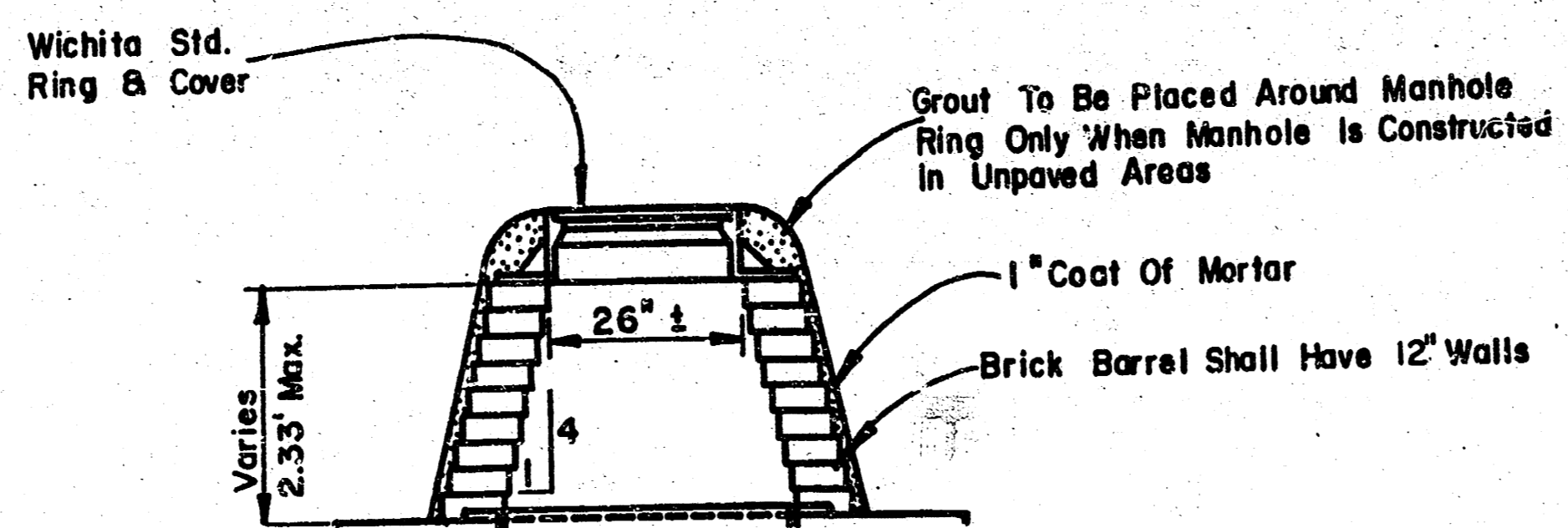
Booked: 6-8-90 MCG



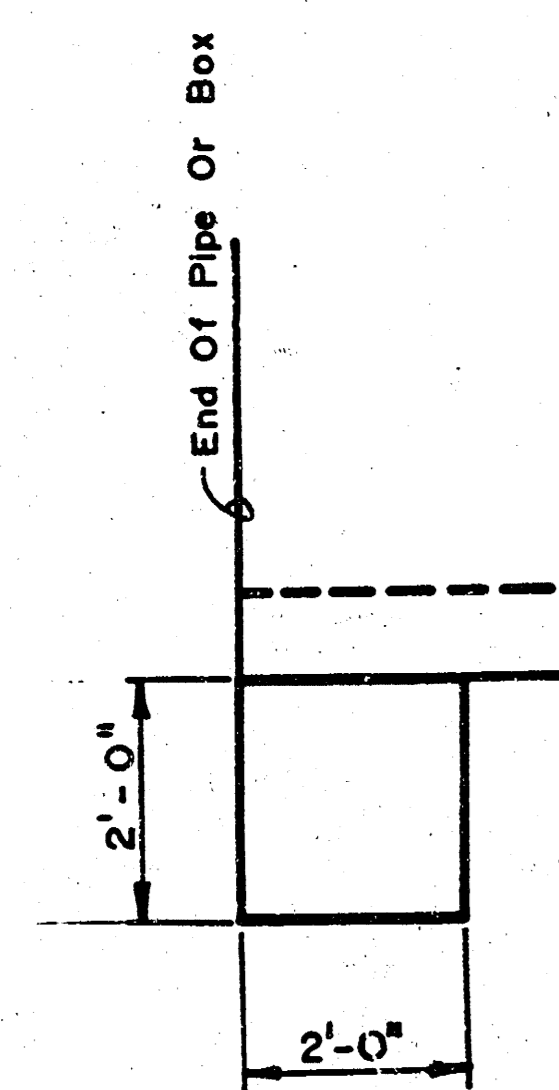


END VIEW

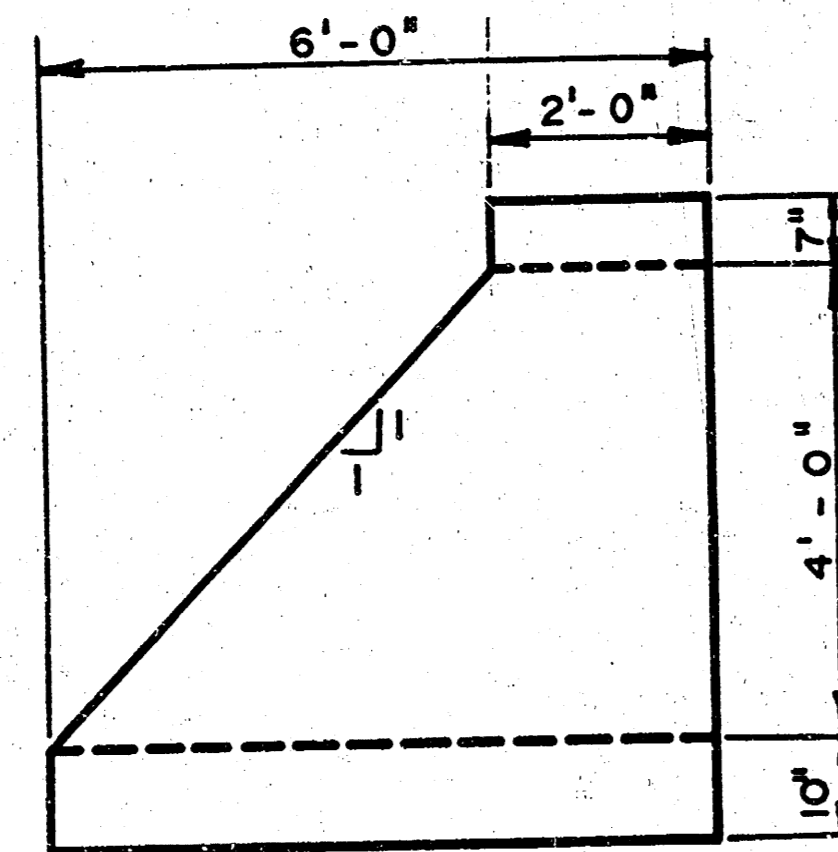
PLAN VIEW



TYPE "B" MANHOLE STACK

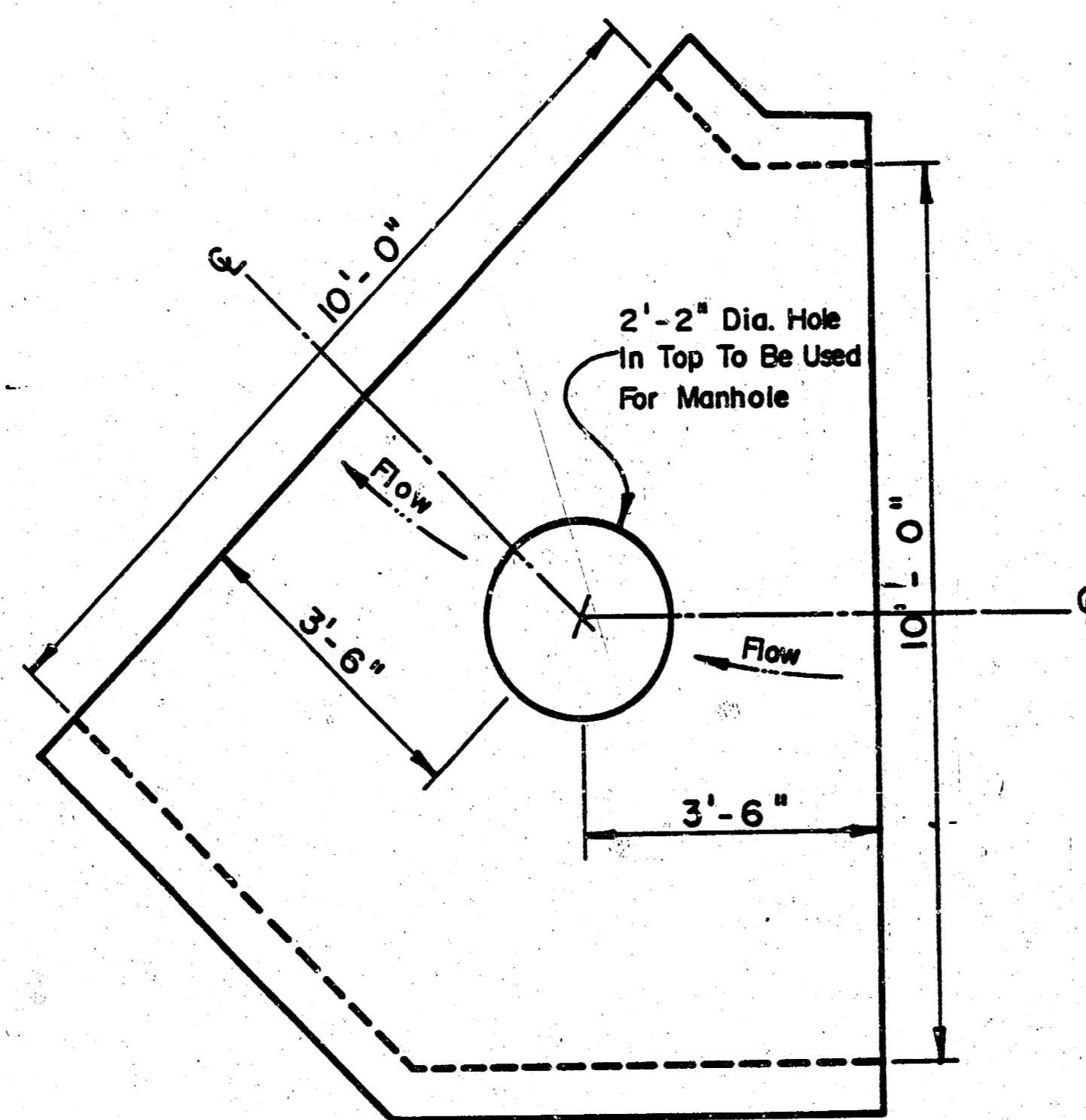


TYPICAL CROSS SECTION
GROUTED RIP-RAP
TOE WALL

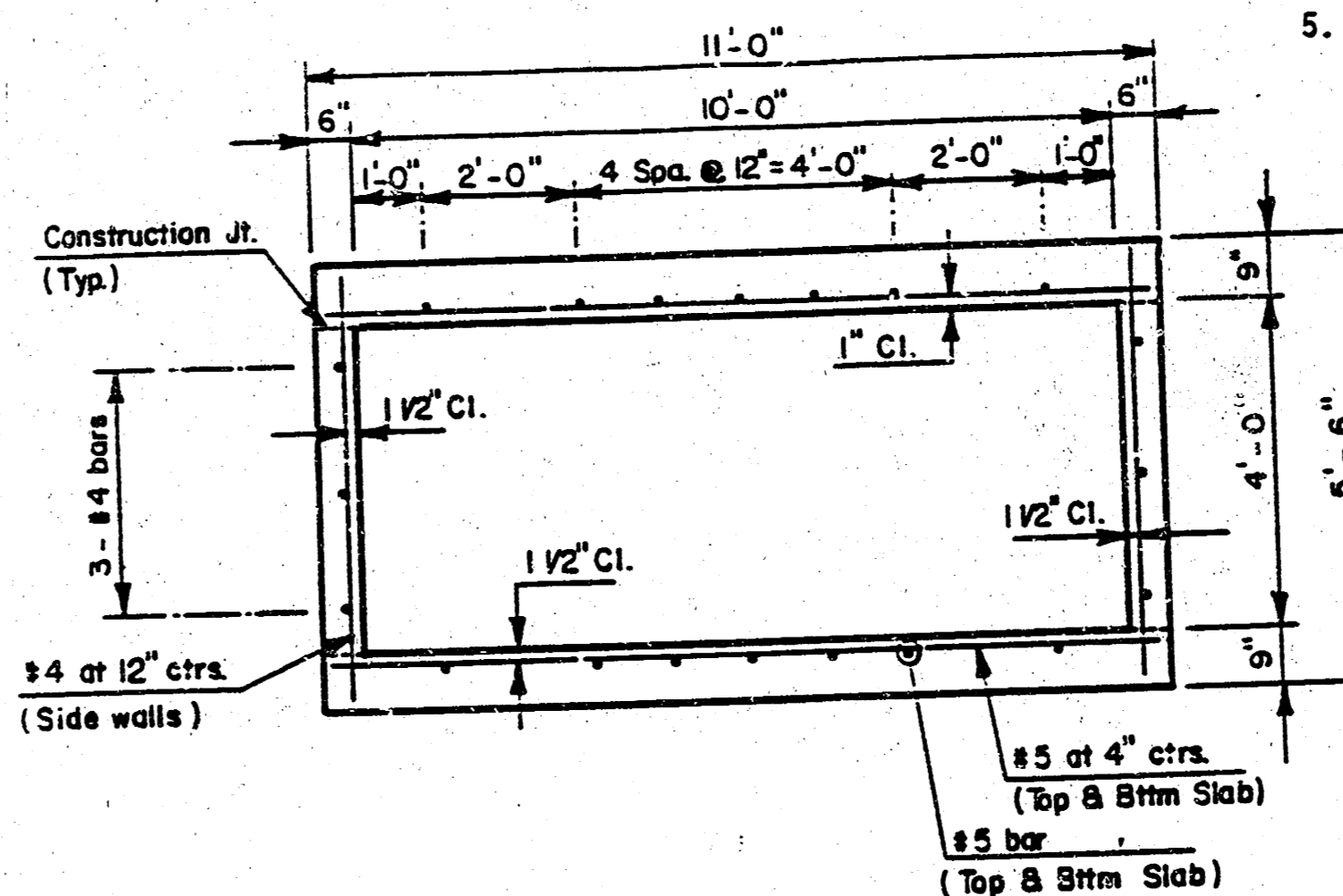


SIDE VIEW

SPECIAL 45° TURN FOR
10' X 4' PRECAST RCB



SPECIAL 45° TURN FOR
10' X 4' PRECAST RCB



TYPICAL R.C.B. TRANSVERSE SECTION

CAST-IN-PLACE REINFORCED CONCRETE BOX CULVERT

- Concrete shall be the City of Wichita paving mix. ($F_c = 4,000$ psi)
- Reinforcing shall be ASTM A615 Grade 60. Lap all bars a minimum of 30 diameters.
- Bevel all exposed edges with a 3/4" triangular mauling unless otherwise noted.
- Construction joints shall be made only at the locations shown or as approved by the Engineer. Cast-in-place transverse joints shall be a maximum of forty (40) feet apart in the walls, slab and floor.
- Connections to existing precast RCB: The surface of the existing RCB shall be sand blasted to a clean surface. The existing casting surface shall be coated with a cement paste prior to placing concrete.

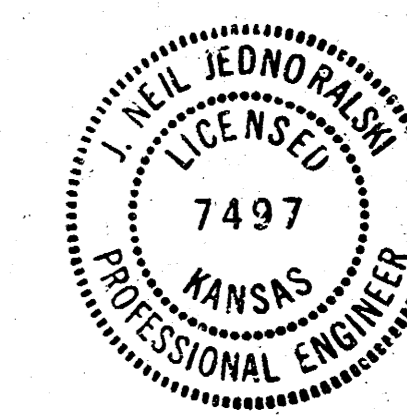
GENERAL NOTES

- THE TOPS OF MANHOLE AS NOTED ON THE PLANS MAY VARY SO AS TO MEET PROPOSED PAVEMENT ELEVATIONS. THE FIELD ENGINEER SHALL LOCATE MANHOLES WITH REFERENCE TO PROPOSED PAVING PLANS.
- THE CONTRACTOR SHALL BE RESPONSIBLE FOR PRESERVING PROPERTY IRONS. THE CONTRACTOR SHALL BE REQUIRED TO RE-ESTABLISH ANY PROPERTY IRONS WHICH ARE DAMAGED OR DESTROYED BY HIS CONSTRUCTION OPERATIONS. SUCH IRONS SHALL BE RE-ESTABLISHED BY A LICENSED LAND SURVEYOR IN ACCORDANCE WITH STATE LAWS.
- ALL CONCRETE SHALL BE STANDARD PAVING MIX UNLESS OTHERWISE NOTED.
- UNDERGROUND UTILITY SERVICE LINES AND OVERHEAD UTILITY POLE LINES ARE TO BE ADJUSTED AS NECESSARY BY OTHERS PRIOR TO CONSTRUCTION UNLESS THE PLANS SPECIFICALLY IDENTIFY A UTILITY TO BE ADJUSTED ITS OWNER DURING CONSTRUCTION. EXISTING UTILITIES AND THEIR LOCATIONS AS SHOWN ON THE PLANS, REPRESENT THE BEST INFORMATION OBTAINABLE FOR DESIGN. LOCATION INFORMATION HAS BEEN OBTAINED FROM THE VARIOUS UTILITY COMPANIES AND IS EITHER FROM COMPANY RECORD DRAWINGS OR COMPANY PROVIDED FIELD LOCATIONS. THE CONTRACTOR WILL BE REQUIRED TO WORK AROUND EXISTING UTILITIES WITHIN THE RIGHT OF WAY WHICH DO NOT CONFLICT WITH PROPOSED CONSTRUCTION.

NOTE: NOTIFY THE FOLLOWING COMPANIES PRIOR TO ANY EXCAVATION:

BELL TELEPHONE COMPANY	571-2115
CABLEVISION	262-0661
KP&L GAS SERVICE COMPANY	263-7511
KANSAS GAS & ELECTRIC	264-1141
KANSAS ONE-CALL	1-800-344-7233
CITY OF WICHITA WATER DEPARTMENT	268-4908
CITY OF WICHITA SEWER MAINTENANCE	268-4071

- THE CHANNEL AND ALL AREAS DISTURBED BY EXCAVATION OF THE CHANNEL SHALL BE SEEDED AND MULCHED PER CITY OF WICHITA SPECIFICATIONS.



C.O.W. PRIVATE PROJECT # 237 PPS (607861) AS BUILT 4-90

	Design	JNJ
	Drawn by	
	Checked by	
	Date	Jan. 24, 1990
KILLARNEY PLAZA 3RD. (PARCEL #110, LOT 3) PRIVATE RCB EXTENSION		DETAILS & GENERAL NOTES
MID-KANSAS ENGINEERING CONSULTANTS PA 3500 NORTH ROCK ROAD BUILDING #800 WICHITA, KANSAS 67226		636-5566 Sheet 2 of 2