

B.M. 11878 N.E. Cor. Grove, Step No. # 701 N. Piatt

B.M. 11570 city st. e. Grove and Central,
B.M. 12023 SW. Cor. Cor. Park Apartment # 709 N. Grove

Remove existing Asphaltic Conc. as shown. Replace with 1" conc. and integral curb.
Remove existing 4x3 RC.C.

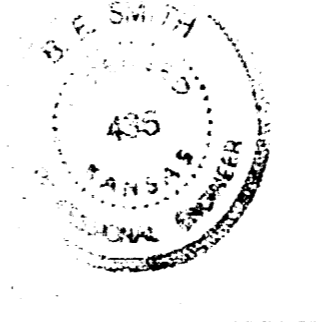
Remove and Replace 4" walk - 3.5' wide.

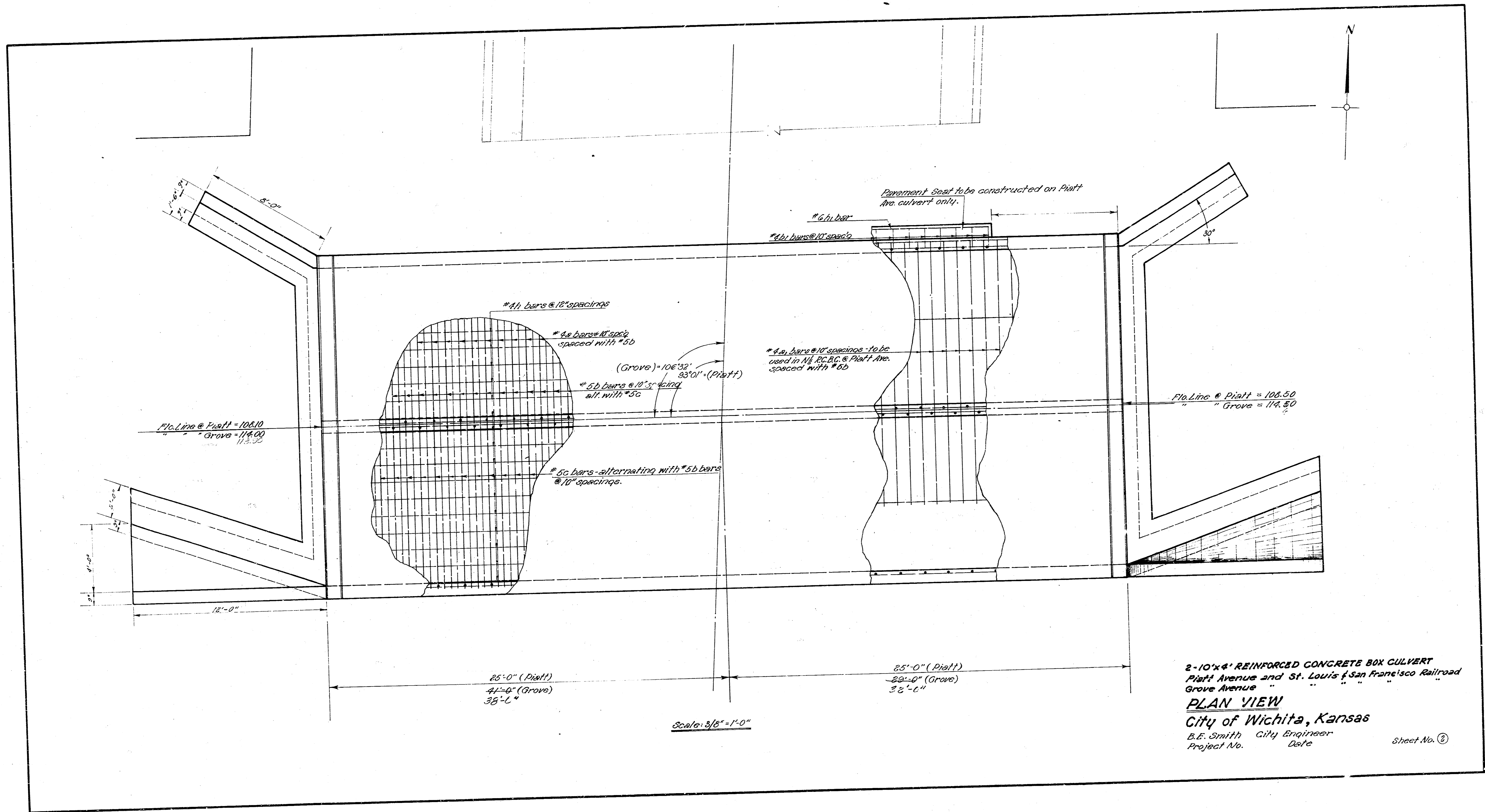
Remove existing asphaltic concrete part as shown. Replace with 1" concrete and integral curb.
Remove and Replace 4" walk - 4.0' wide.

Remove existing 4x3 RC.C.C.P.

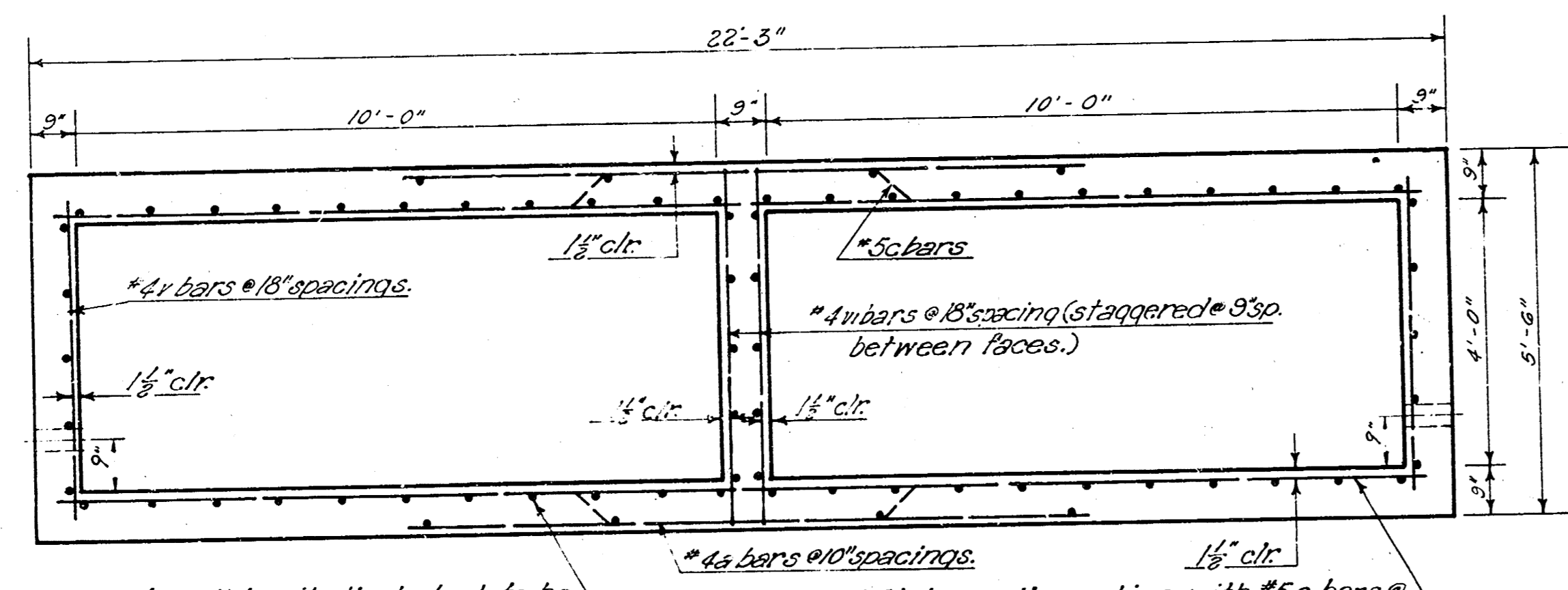
2-10'x4' REINFORCED CONCRETE BOX CULVERT
Piatt Avenue and E. Lents & San Francisco Railroad
Grove Avenue

LOCATION MAP
City of Wichita, Kansas
B.E. Smith City Engineer
Project No. C23-25 Date JULY 1963 Sheet No. ①

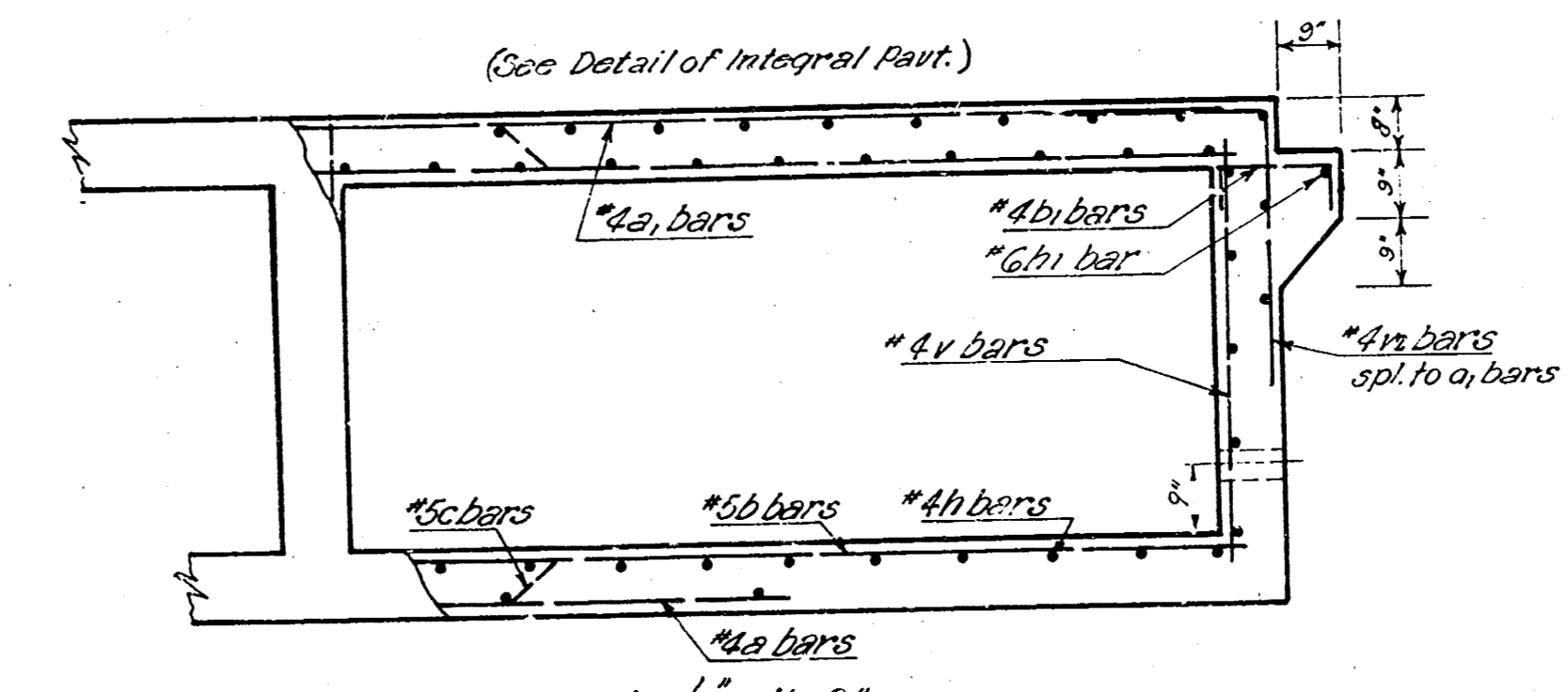




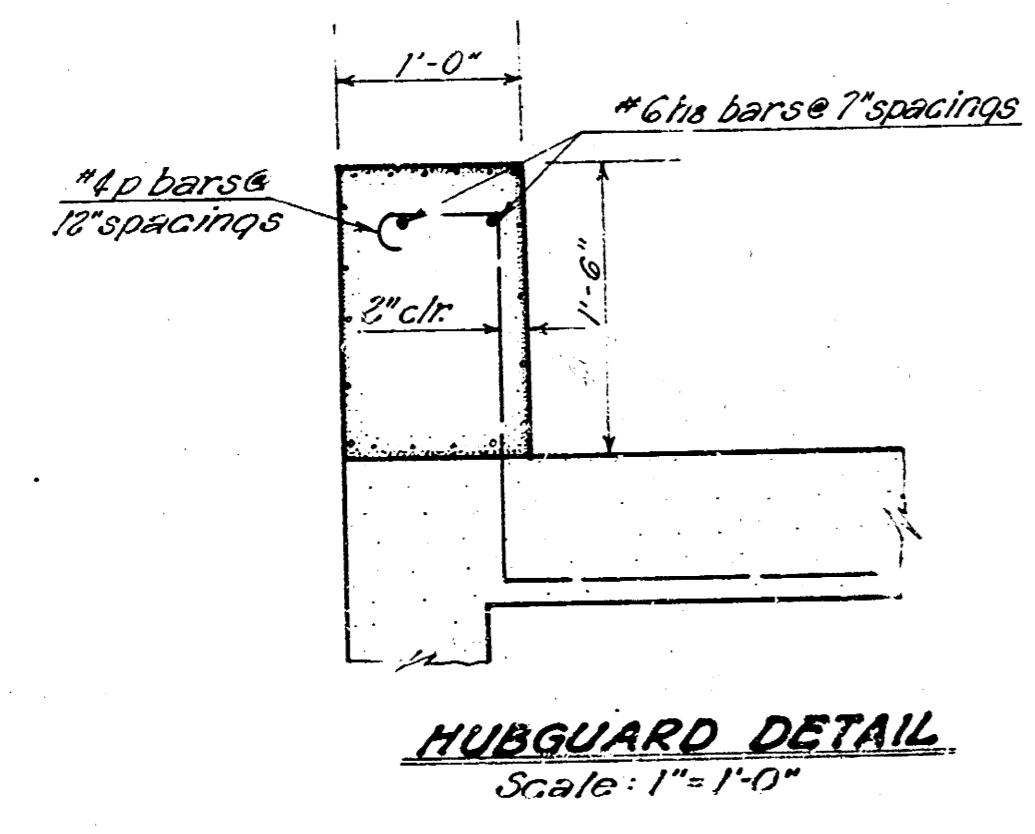
2-10' x 4' REINFORCED CONCRETE BOX CULVERT
 Piatt Avenue and St. Louis & San Francisco Railroad
 Grove Avenue
PLAN VIEW
 City of Wichita, Kansas
 B.E. Smith City Engineer
 Project No. Date
 Sheet No. ②



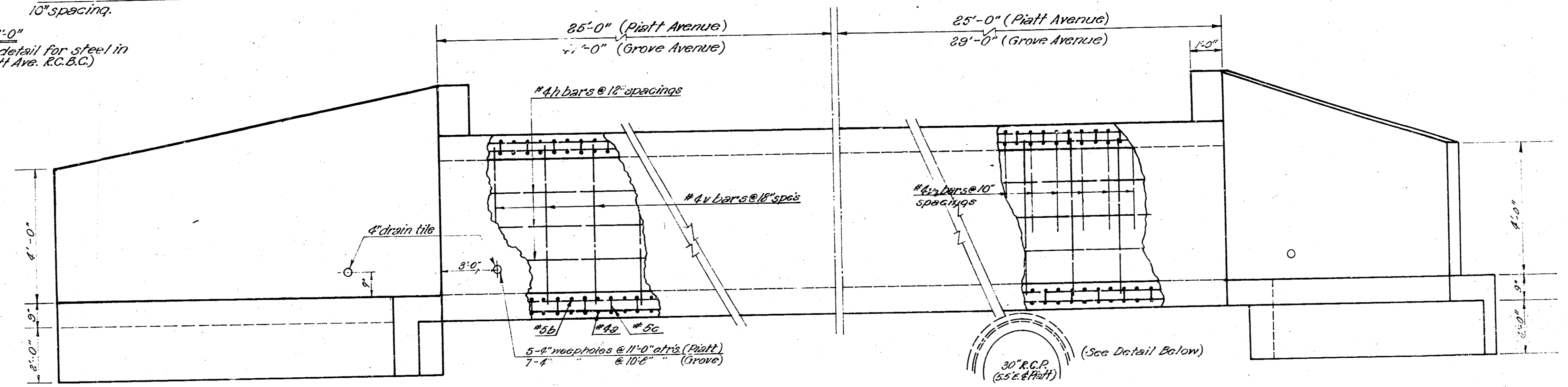
Note - all longitudinal steel to be #4 bars @ 18" spacing.
 #4 bars @ 18" spacing.
 #5 bars @ 10" spacing.
 #5b bars alternating with #5c bars @ 10" spacing.
 Scale: 1/2" = 1'-0"
 (Note - See detail for steel in N 1/2 of Platt Ave. R.C.B.C.)



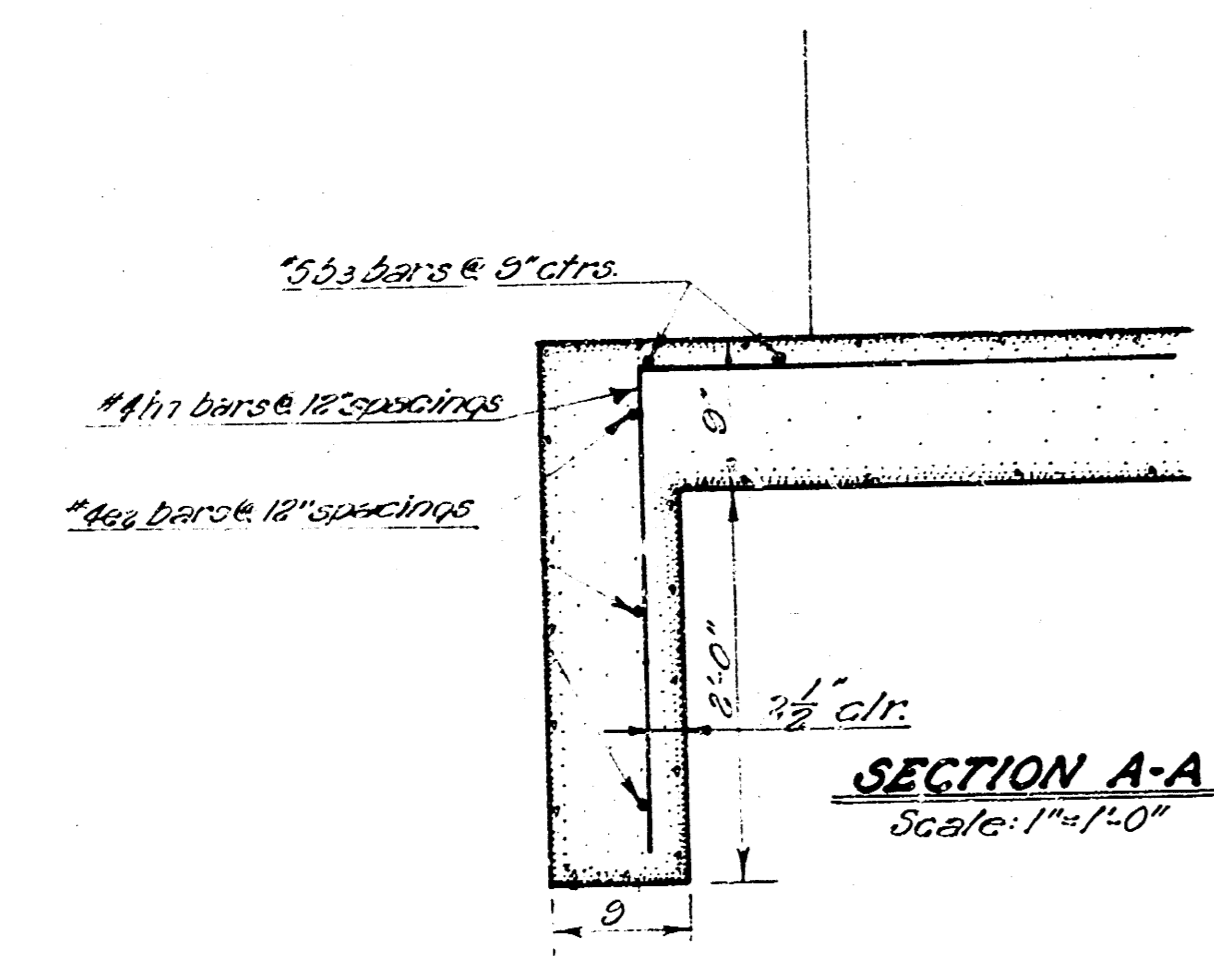
(See Detail of Integral Part)
 Scale: 1/2" = 1'-0"
 (Steel Pattern for N 1/2 R.C.B.C. @ Platt)



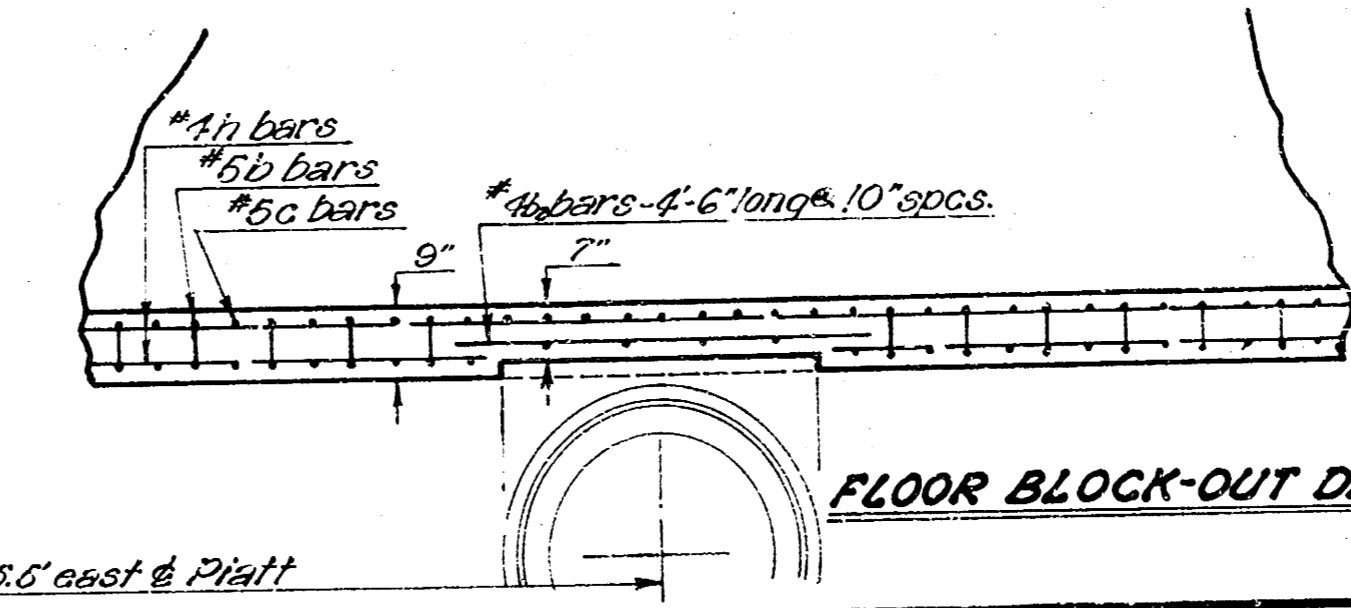
HUBGUARD DETAIL
 Scale: 1" = 1'-0"



PROFILE
 Scale: 3/8" = 1'-0"



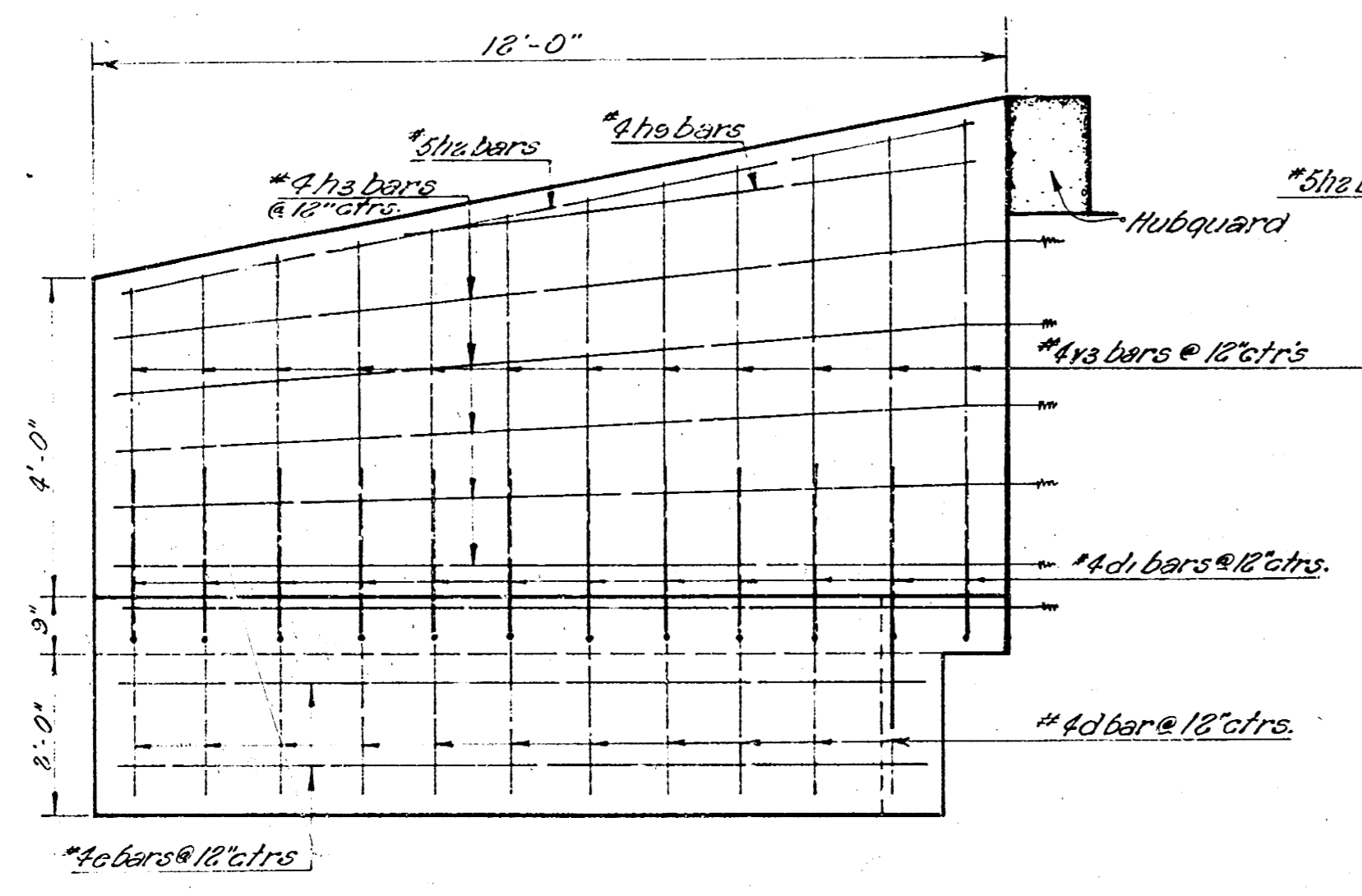
SECTION A-A
 Scale: 1" = 1'-0"



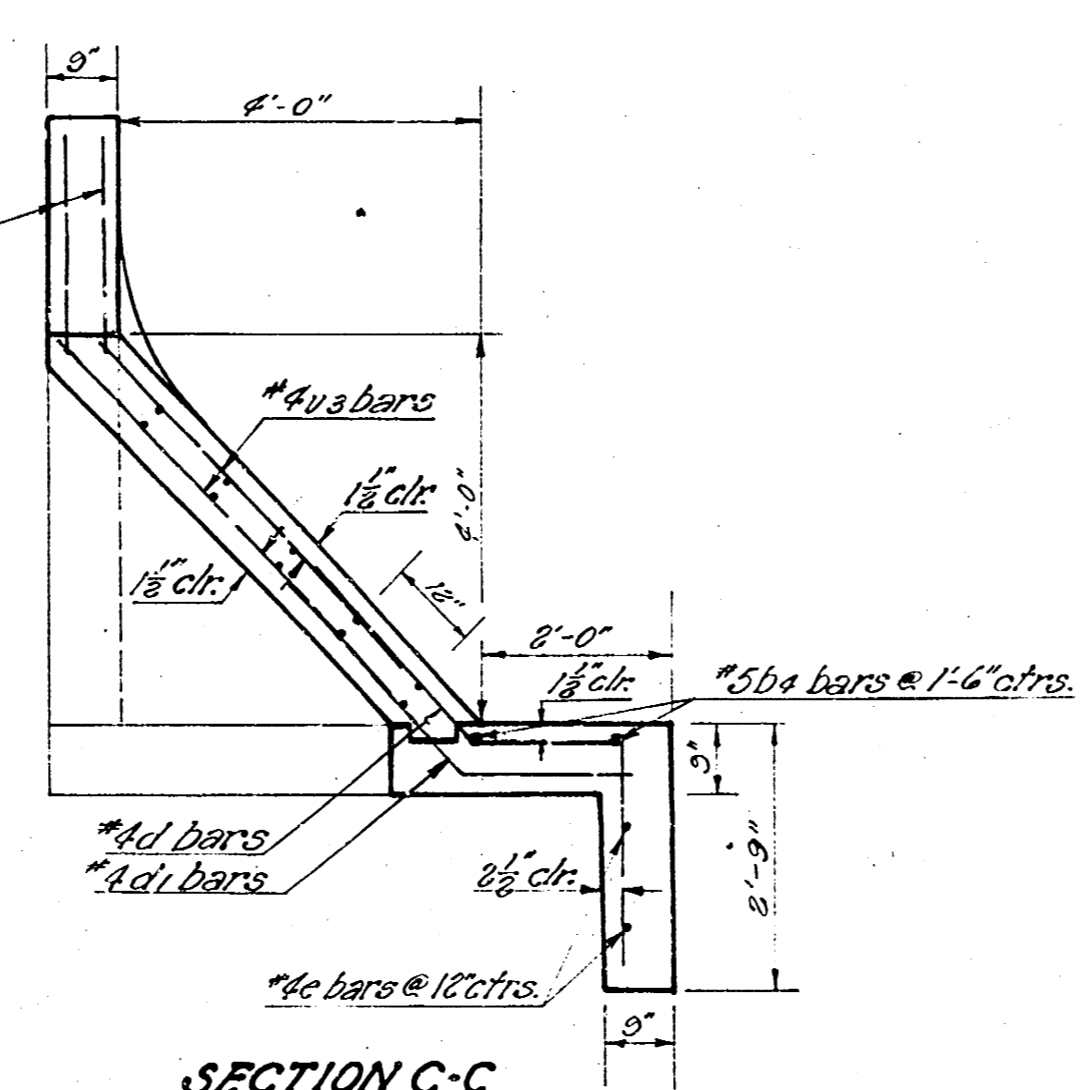
FLOOR BLOCK-OUT DETAIL

Note - Due to the uncertainty of the condition and elevation of existing 30" R.C.P. sanitary sewer, caution to be used when removing existing R.C.B. and while excavating for new 2'-10 1/2" R.C.B.C. No heavy equipment is to cross this sewer. Also note that if the top of the existing sewer pipe is within (3") of bottom new floor use block-out and steel pattern as shown in detail. These conditions exist only at Platt Avenue.

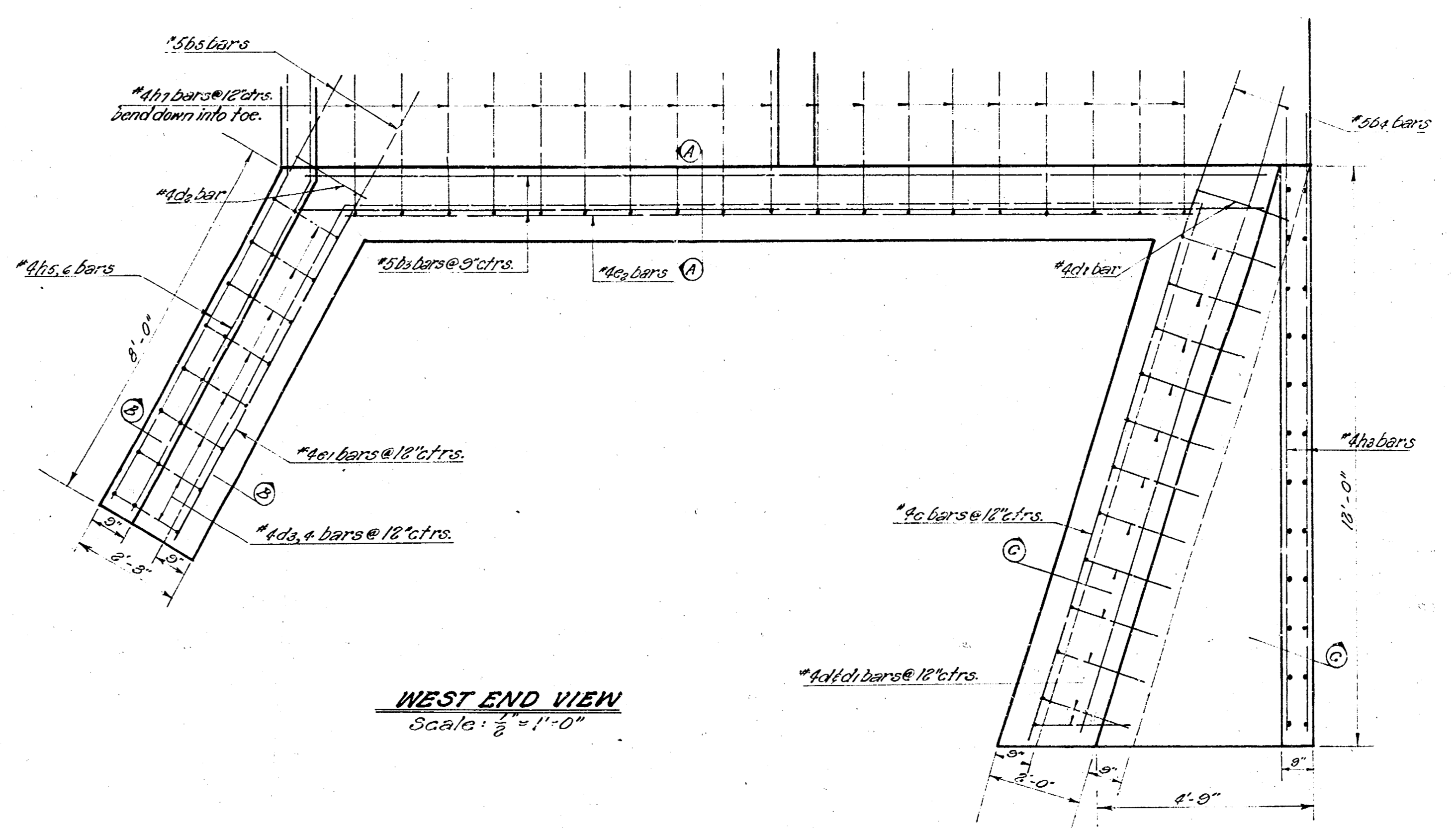
5'-0" mesh @ Platt



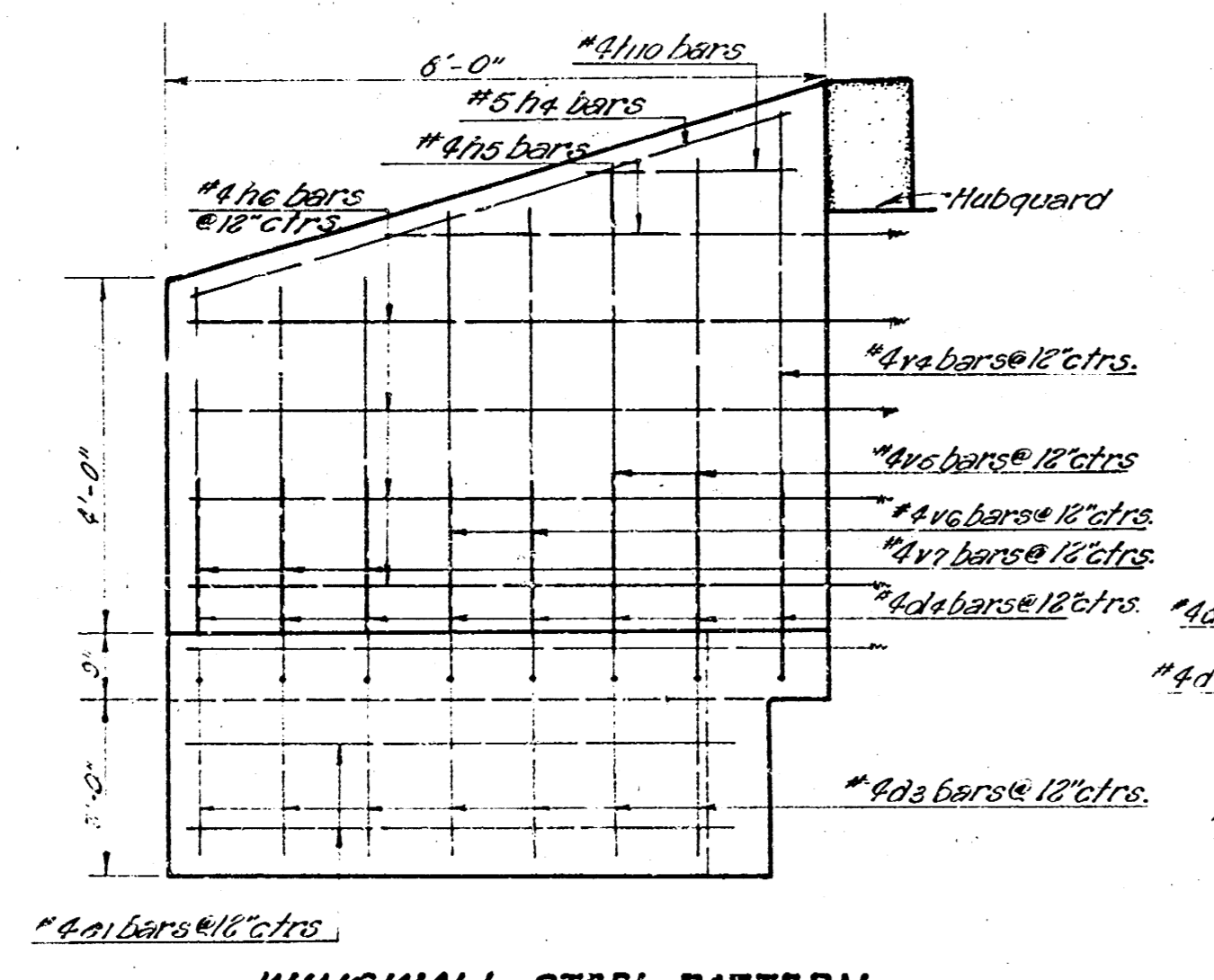
WINGWALL STEEL PATTERN
Scale: 1/8" = 1'-0"



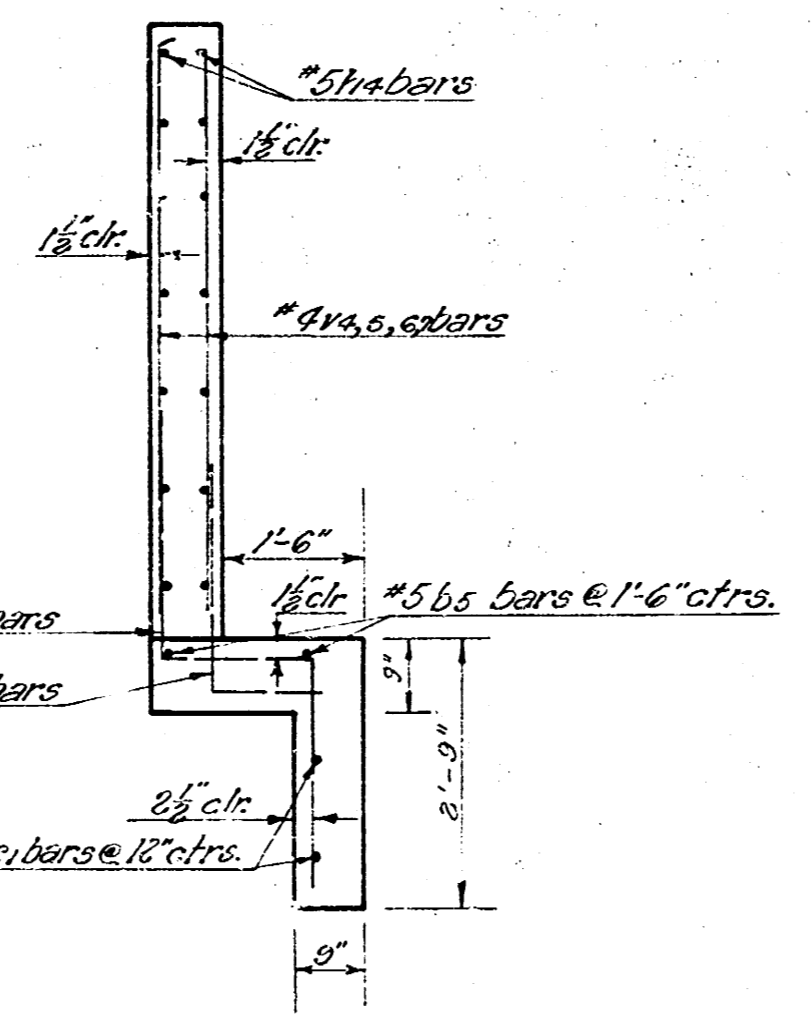
SECTION C-C
Scale: 1/8" = 1'-0"



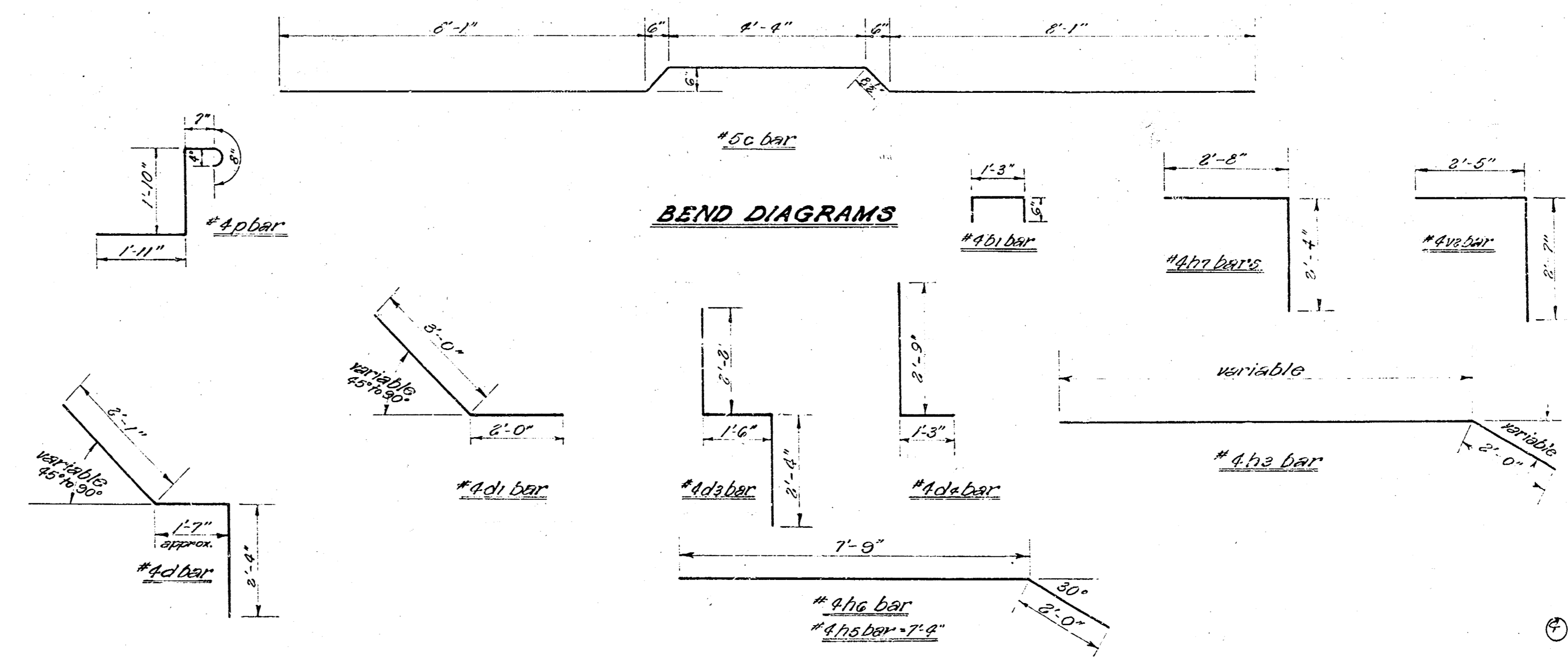
WEST END VIEW
Scale: 1/8" = 1'-0"



WINGWALL STEEL PATTERN
Scale: 1/8" = 1'-0"



SECTION B-B
Scale: 1/8" = 1'-0"



BEND DIAGRAMS

