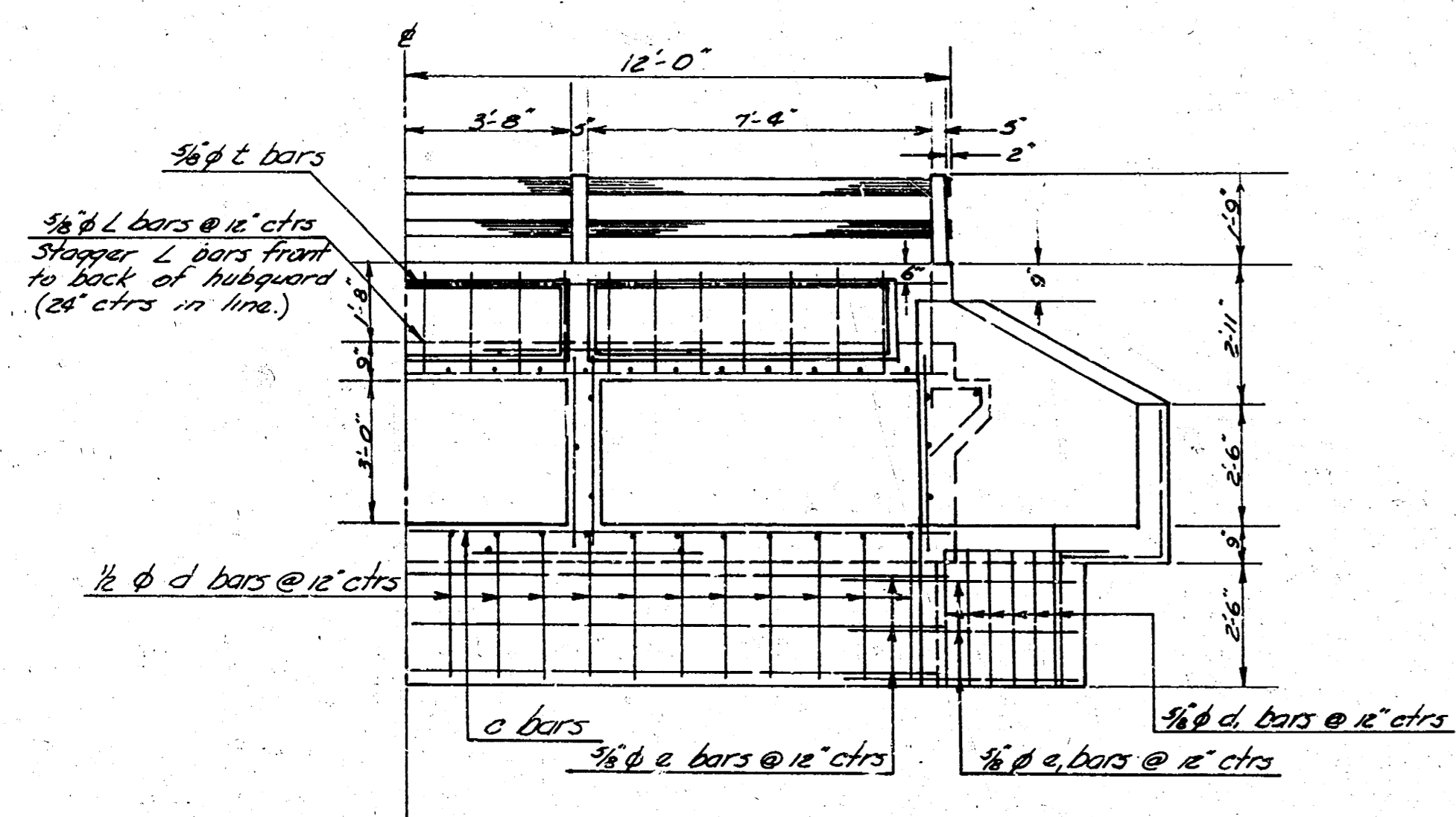
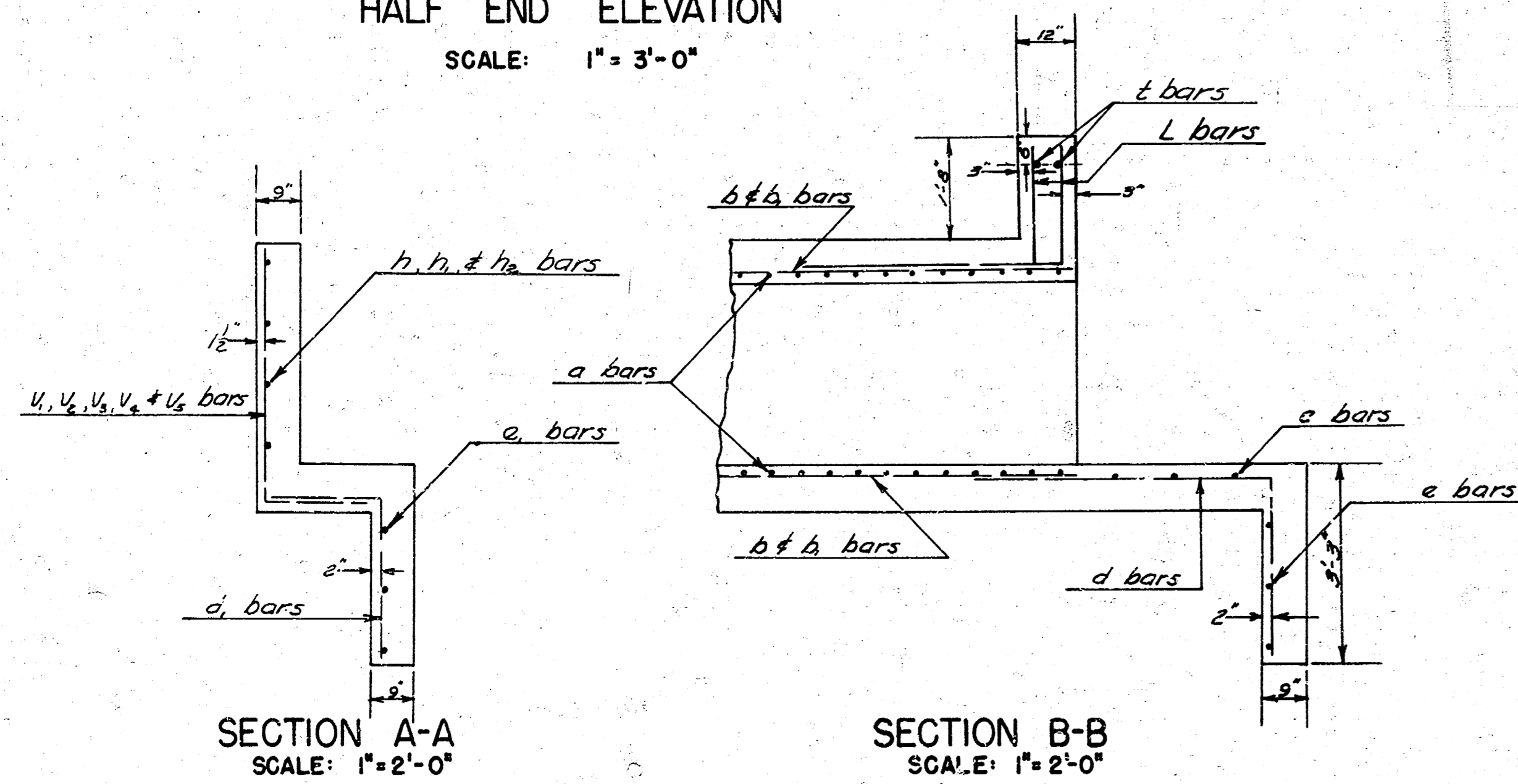


CULVERT DETAILS  
MERIDIAN & 33RD ST. SO.

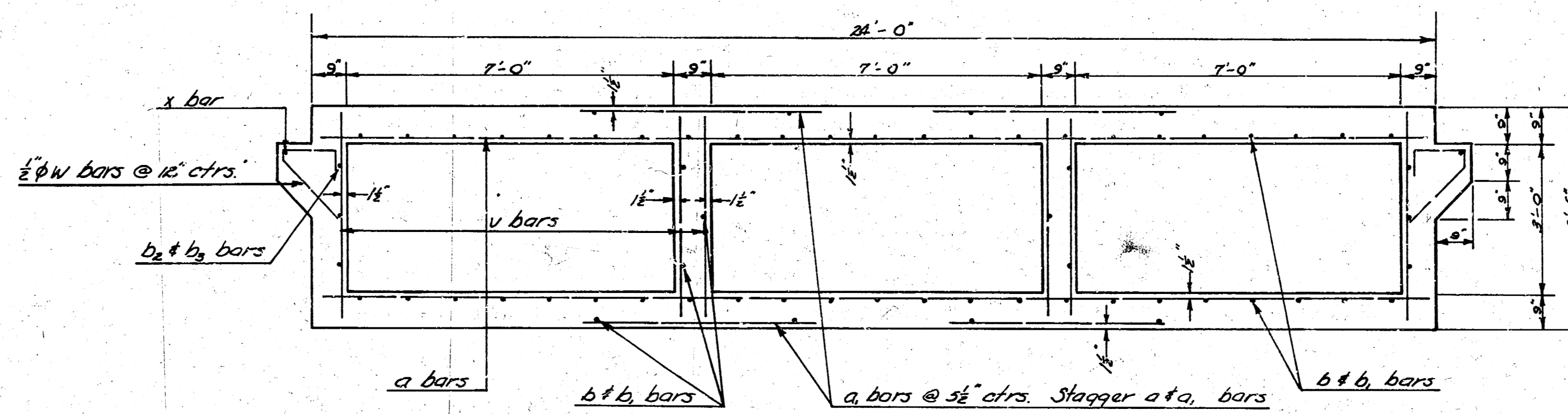


HALF END ELEVATION  
SCALE: 1" = 3'-0"

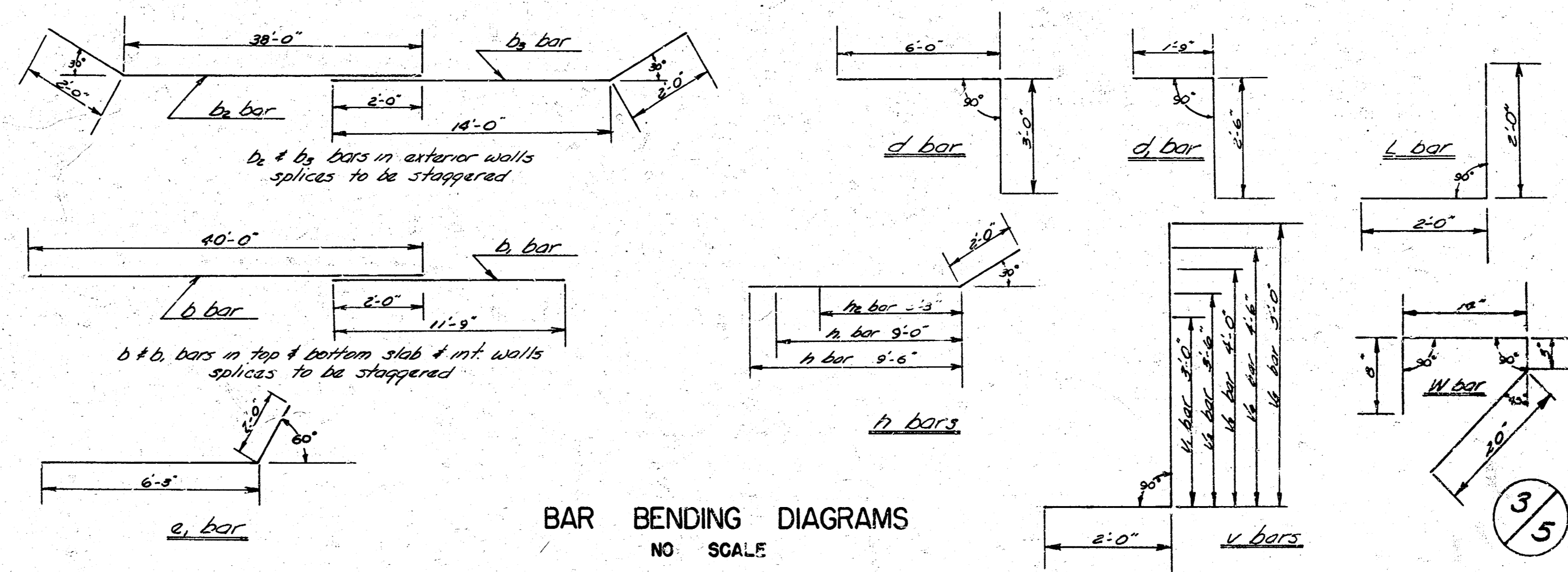


SECTION A-A  
SCALE: 1" = 2'-0"

SECTION B-B  
SCALE: 1" = 2'-0"



CROSS SECTION OF BOX  
SCALE: 1" = 2'-0"



BAR BENDING DIAGRAMS  
NO SCALE

\* Pipes may be one piece 24'-0" long or cut into lengths as shown.

