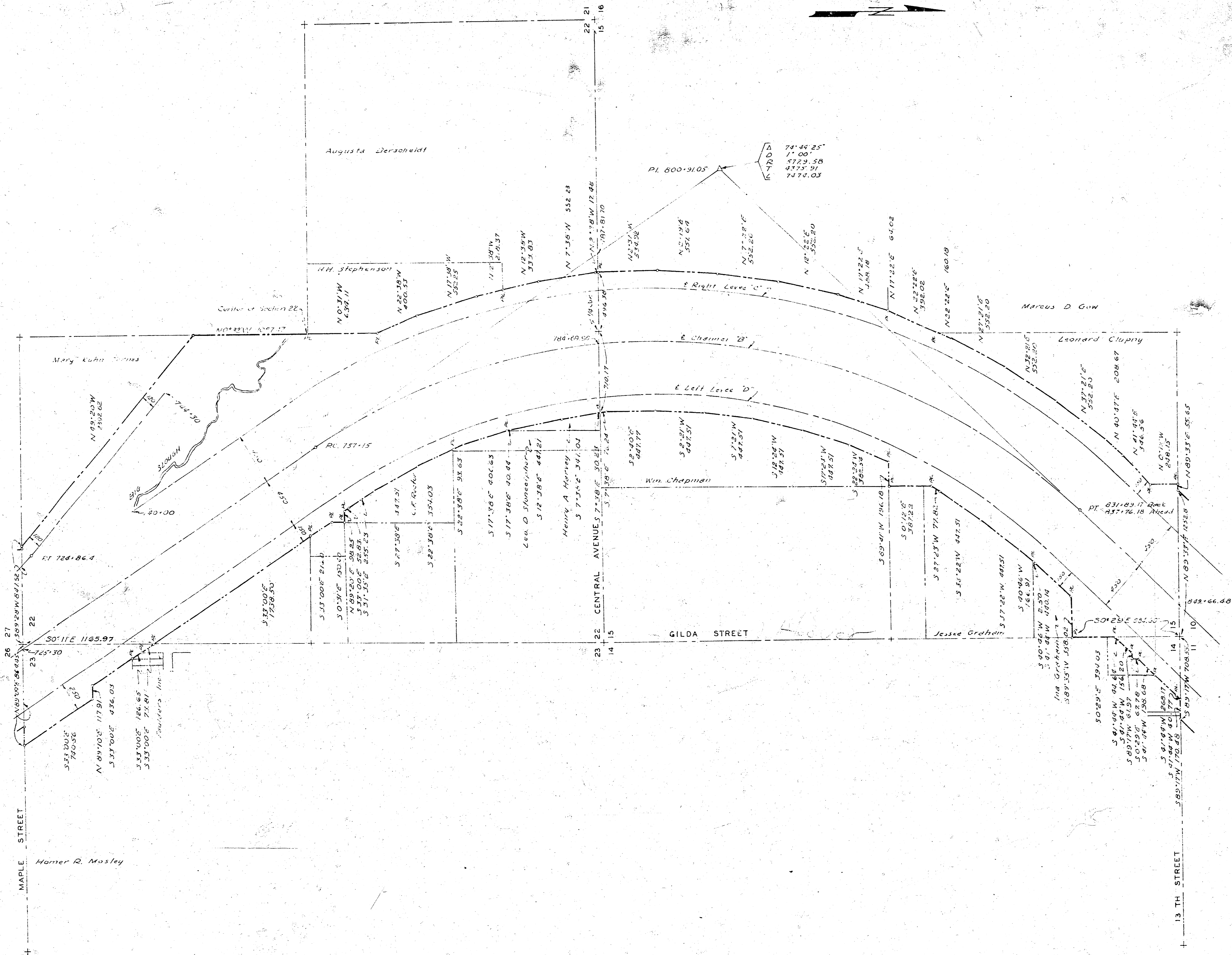


RIW



T 27 S

LEGEND

- CONCRETE MONUMENTS
- △ P.I. OF CURVES
- CENTER LINES OF LEVEES & CHANNELS
- PROPERTY LINES
- RIGHT OF WAY LIMITS

KANSAS RIVER BASIN
 WICHITA AND VALLEY CENTER
 FLOOD CONTROL PROJECT
 BIG SLOUGH-COWSKIN CREEK FLOODWAY
 PARCEL "B" PART I & II
 RIGHT OF WAY PLAN

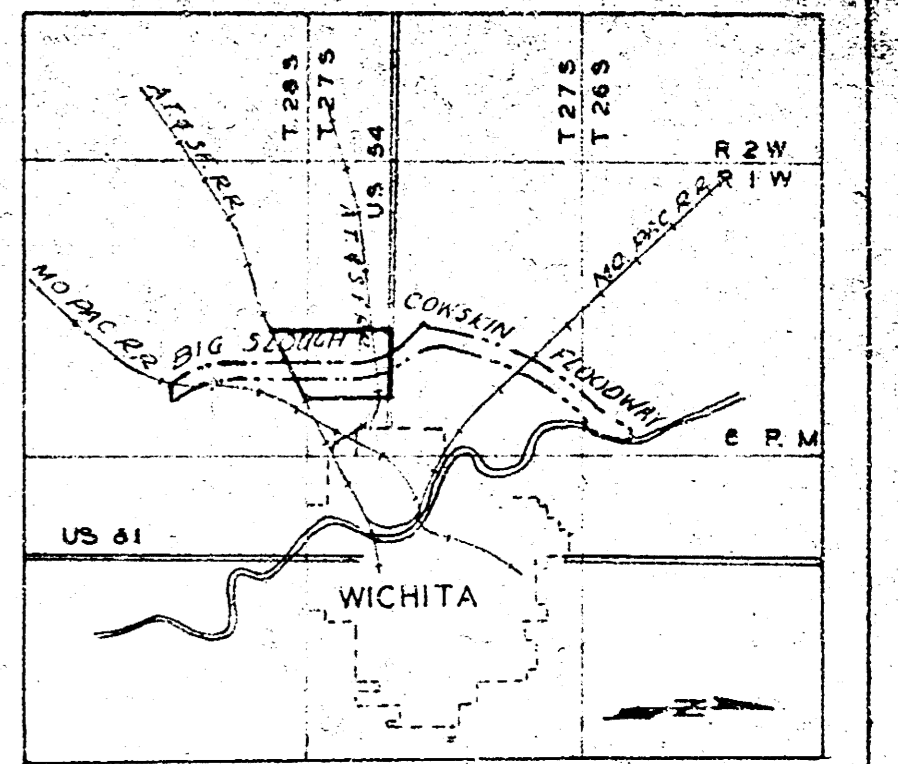
SCALE: 1 INCH = 400 FEET
 CITY-COUNTY ENGINEER OFFICE, WICHITA, KANSAS

DATE	DESCRIPTION	CHKD	REC	APPR
1/31/70	Relocation of Right of Way in Terres property	JAS		
REVISIONS				

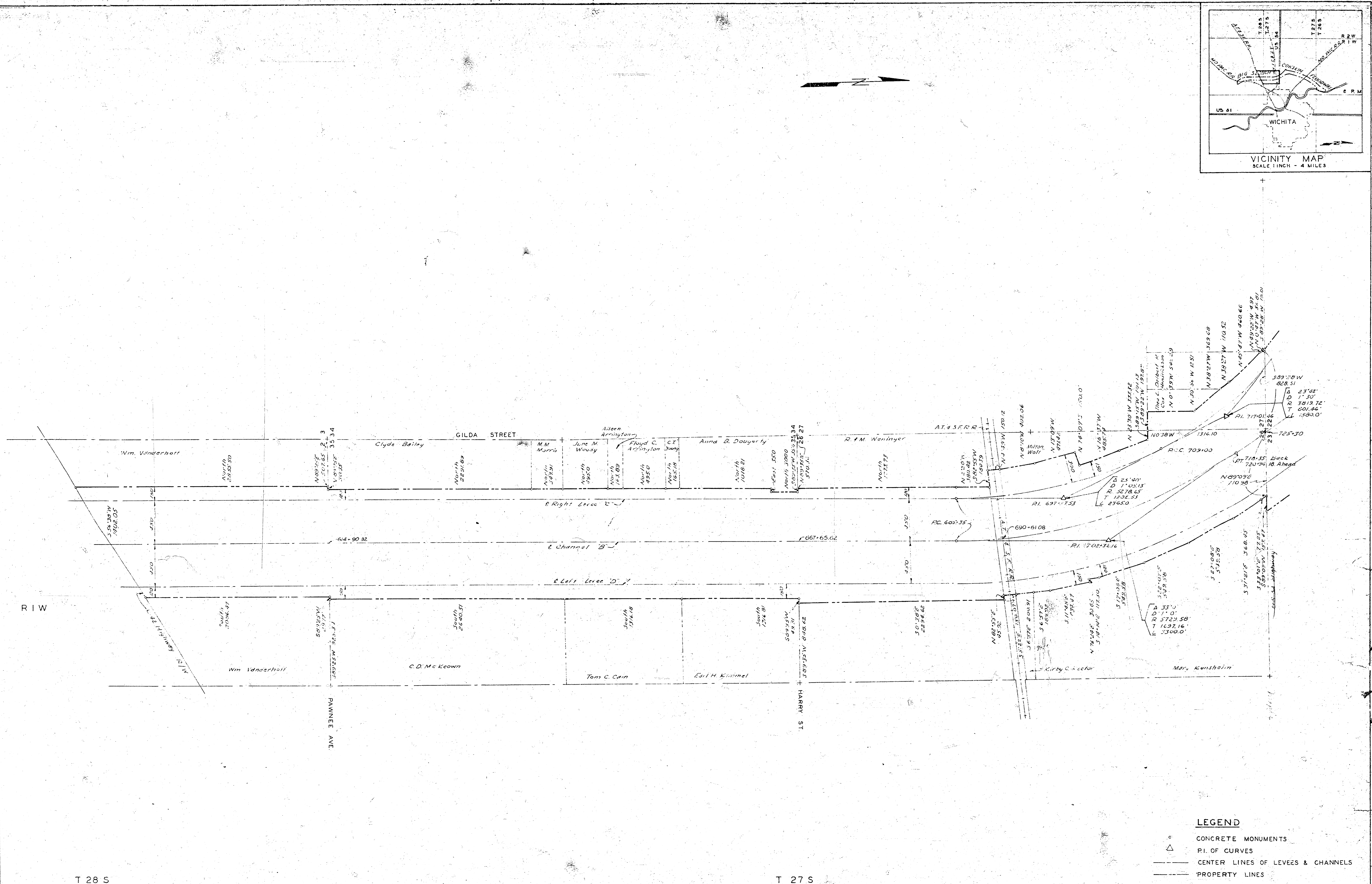
APPROVED:
Conrad
 ENGINEER IN CHARGE

DRAWN BY: [Signature]
 TRACED BY: [Signature]
 CHECKED BY: [Signature]

SHEET 3 OF 4 SHEETS



VICINITY MAP
SCALE 1 INCH = 4 MILES



T 28 S

T 27 S

- LEGEND**
- CONCRETE MONUMENTS
 - △ P.I. OF CURVES
 - CENTER LINES OF LEVEES & CHANNELS
 - PROPERTY LINES
 - RIGHT OF WAY LIMITS

ARKANSAS RIVER BASIN
WICHITA AND VALLEY CENTER
FLOOD CONTROL PROJECT
BIG SLOUGH-COWSKIN CREEK FLOODWAY
PARCEL "B" PART I & II
RIGHT OF WAY PLAN

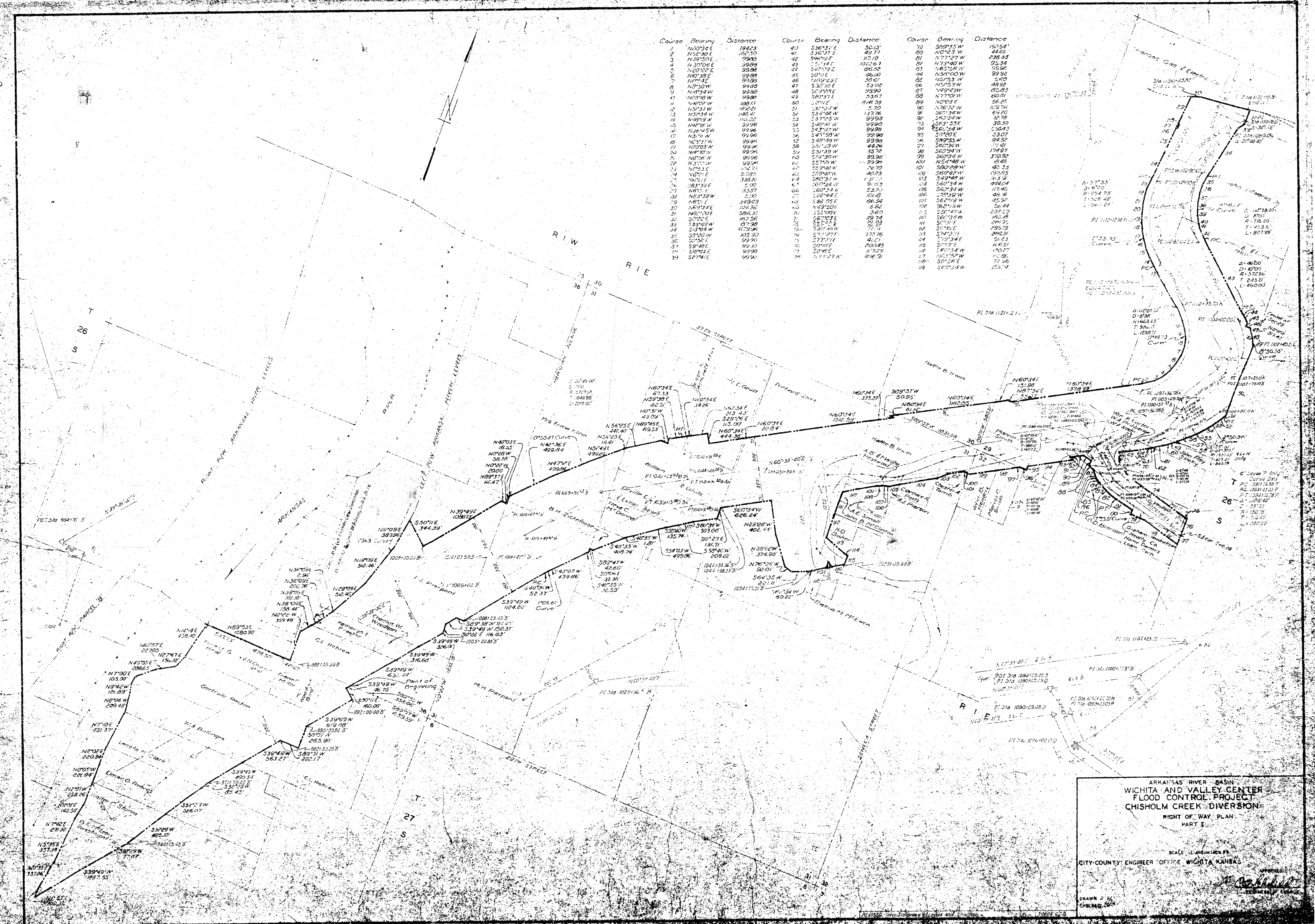
SCALE: 1 INCH = 400 FEET
CITY-COUNTY ENGINEER OFFICE, WICHITA, KANSAS

APPROVED
[Signature]
ENGINEER IN CHARGE

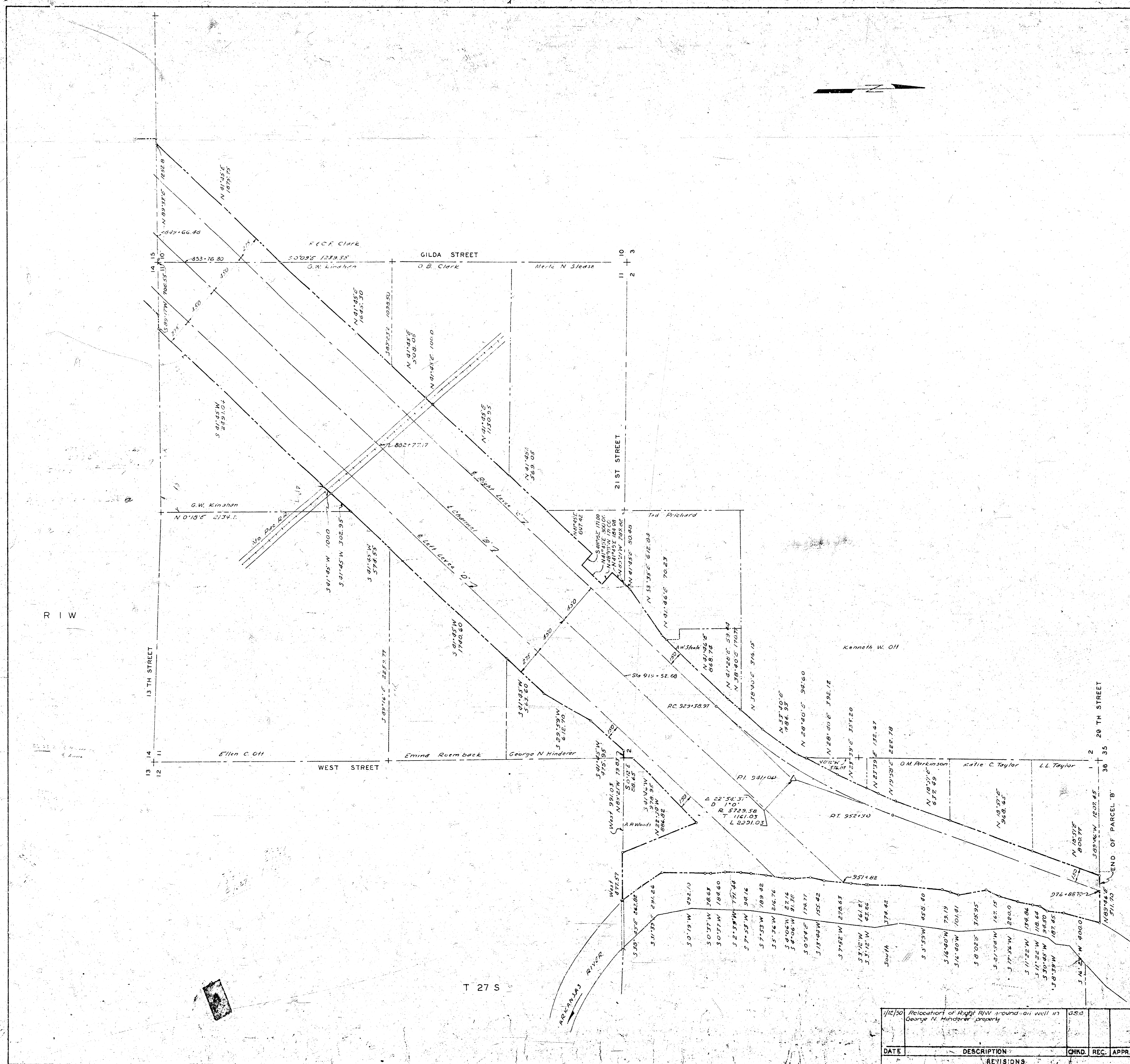
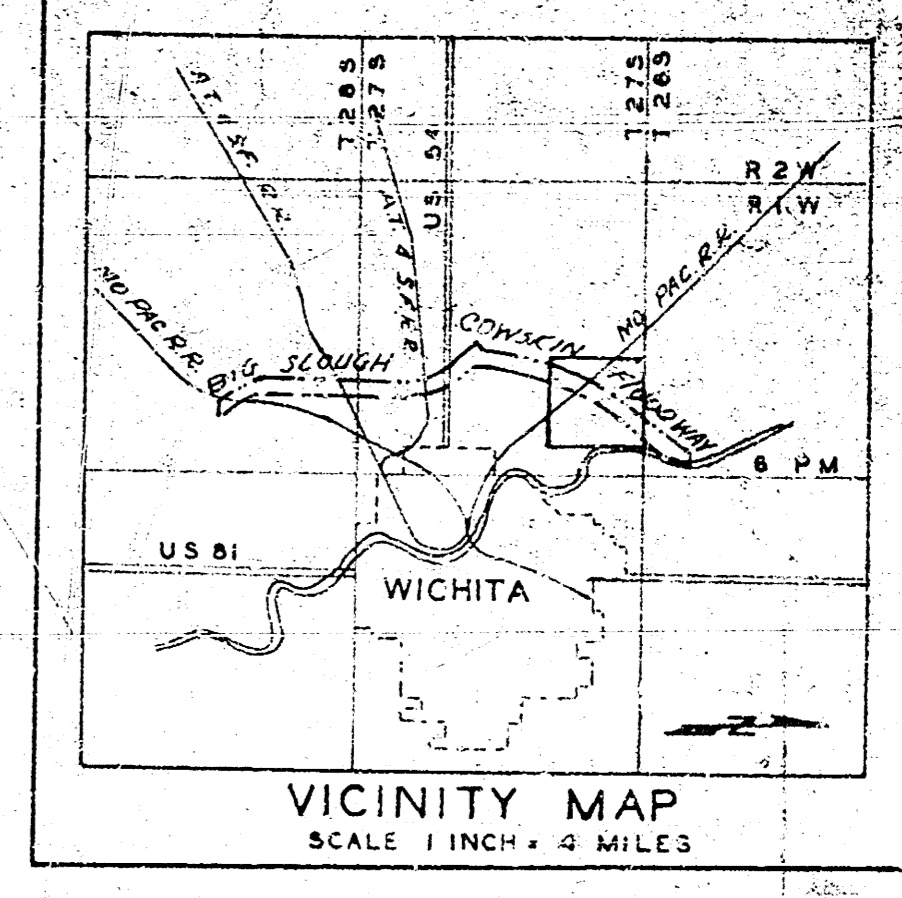
DATE	DESCRIPTION	CHKD.	REC.	APPR.
REVISIONS				

DRAWN *[Signature]*
TRACED
CHECKED *[Signature]*
SHEET 2 OF 4 SHEETS

Course	Bearing	Distance	Course	Bearing	Distance	Course	Bearing	Distance
1	N20°34'E	194.23	43	S36°33'E	30.12	70	S69°23'W	163.54
2	N22°30'E	185.50	44	S34°12'E	49.71	80	N0°53'W	44.60
3	N30°50'E	094.93	45	S40°26'E	117.19	81	N77°27'W	238.35
4	N30°08'E	399.89	46	S37°14'E	102.26	82	N74°40'W	75.34
5	N20°32'E	302.80	47	S47°02'E	262.25	83	N65°06'W	166.98
6	N10°38'E	292.88	48	S50°11'E	266.40	84	N54°00'W	99.92
7	N4°54'E	371.83	49	S54°24'E	392.21	85	N67°33'W	2.00
8	N5°50'W	294.00	50	S52°30'E	534.02	86	N45°33'W	48.92
9	N4°54'W	292.88	51	S50°33'E	281.77	87	N49°23'W	60.02
10	N4°54'W	292.88	52	S48°36'E	236.17	88	N72°03'W	60.01
11	N4°54'W	100.01	53	S46°39'E	416.72	89	N60°03'E	56.25
12	N5°31'W	48.21	54	S44°42'E	57.70	90	N76°32'W	120.76
13	N5°31'W	145.41	55	S42°45'E	127.96	91	S65°36'W	69.40
14	N4°54'W	113.02	56	S40°48'E	99.93	92	S43°34'W	10.76
15	N4°54'W	399.89	57	S38°51'E	99.93	93	S41°32'W	30.55
16	N4°54'W	399.89	58	S36°54'E	99.93	94	S39°30'W	200.43
17	N3°11'W	092.06	59	S34°57'E	99.93	95	S37°28'W	230.7
18	N3°11'W	092.06	60	S33°00'E	99.93	96	S35°26'W	94.56
19	N3°11'W	092.06	61	S31°03'E	44.26	97	S33°24'W	11.01
20	N3°11'W	092.06	62	S29°06'E	55.72	98	S31°22'W	174.97
21	N3°11'W	092.06	63	S27°09'E	99.93	99	S29°20'W	170.28
22	N3°11'W	092.06	64	S25°12'E	99.93	100	N5°48'W	14.25
23	N3°11'W	092.06	65	S23°15'E	72.79	101	S30°26'W	46.23
24	N3°11'W	092.06	66	S21°18'E	40.23	102	S31°32'W	494.04
25	N3°11'W	338.21	67	S19°21'E	31.71	103	S32°38'W	113.75
26	N3°11'W	2.00	68	S17°24'E	23.70	104	S33°44'W	17.40
27	N3°11'W	338.21	69	S15°27'E	10.60	105	S34°50'W	48.16
28	N3°11'W	2.00	70	S13°30'E	66.54	106	S35°56'W	55.57
29	N3°11'W	338.21	71	S11°33'E	33.50	107	S37°02'W	56.44
30	N3°11'W	338.21	72	S9°36'E	2.00	108	S38°08'W	232.2
31	N3°11'W	338.21	73	S7°39'E	39.09	109	S39°14'W	241.5
32	N3°11'W	338.21	74	S5°42'E	30.03	110	S40°20'W	295.2
33	N3°11'W	338.21	75	S3°45'E	77.14	111	S41°26'W	280.31
34	N3°11'W	338.21	76	S1°48'E	173.75	112	S42°32'W	21.8
35	N3°11'W	338.21	77	S0°00'E	105.93	113	S43°38'W	114.51
36	N3°11'W	338.21	78	N1°47'W	99.93	114	S44°44'W	140.27
37	N3°11'W	338.21	79	N3°44'W	99.93	115	S45°50'W	71.16
38	N3°11'W	338.21	80	N5°41'W	99.93	116	S46°56'W	120.76
39	N3°11'W	338.21	81	N7°38'W	99.93	117	S48°02'W	170.28
40	N3°11'W	338.21	82	N9°35'W	99.93	118	S49°08'W	220.8
41	N3°11'W	338.21	83	N11°32'W	99.93	119	S50°14'W	271.3
42	N3°11'W	338.21	84	N13°29'W	99.93	120	S51°20'W	321.8



ARKANSAS RIVER BASIN
 WICHITA AND VALLEY CENTER
 FLOOD CONTROL PROJECT
 CHISHOLM CREEK DIVERSION
 RIGHT OF WAY PLAN
 PART I
 SCALE: 1" = 100' (AS SHOWN)
 CITY-COUNTY ENGINEER OFFICE WICHITA, KANSAS
 DRAWN BY: [Signature]
 CHECKED BY: [Signature]



- LEGEND**
- CONCRETE MONUMENTS
 - △ P.I. OF CURVES
 - CENTER LINES OF LEVEES & CHANNELS
 - PROPERTY LINES
 - RIGHT OF WAY LIMITS

ARKANSAS RIVER BASIN
 WICHITA AND VALLEY CENTER
 FLOOD CONTROL PROJECT
BIG SLOUGH-COWSKIN CREEK FLOODWAY
 PARCEL "B" PART I & II
 RIGHT OF WAY PLAN

SCALE: 1 INCH = 400 FEET
 CITY-COUNTY ENGINEER OFFICE, WICHITA, KANSAS

DATE	DESCRIPTION	CHKD.	REC.	APPR.
1/12/50	Relocation of Right R/W around all well in George N. Hinderer property			
REVISIONS:				

APPROVED: *[Signature]*
 ENGINEER-RECORD
 DRAWN: *[Signature]*
 TRACED
 CHECKED: *[Signature]* SHEET 4 OF 4 SHEETS