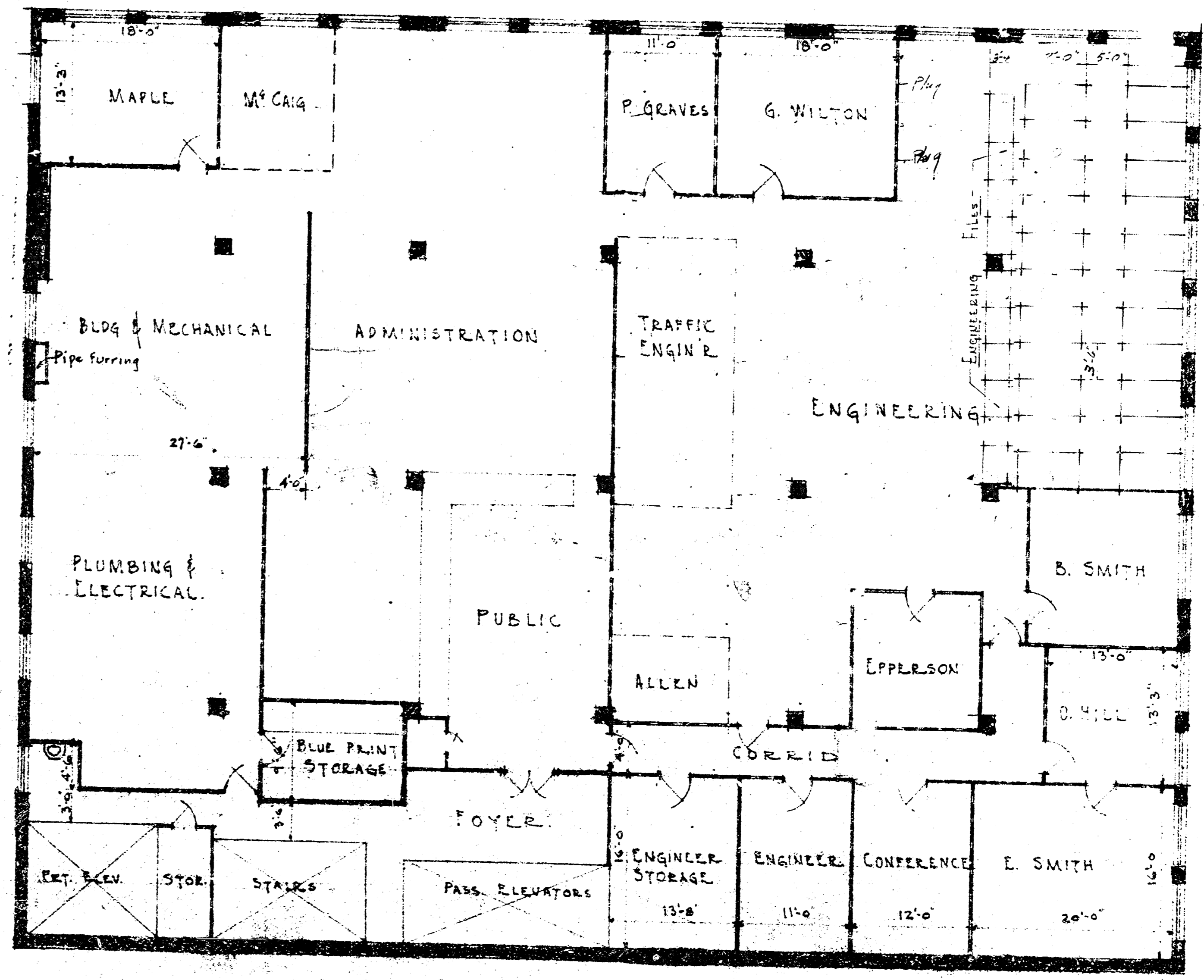


THIRD FLOOR PLAN
Scale 1/8" = 1'-0"

KEY TO PARTITION HEIGHT
 TO CEILING
 8'-0" HIGH
 5'-6" HIGH
 12-13-37 - 12-21-38



THIRD FLOOR PLAN
Scale 1/8" = 1'-0"

KEY TO PARTITION HEIGHT
 TO CEILING
 8'-0" HIGH
 5'-6" HIGH
 12-13-37