

CITY PLANNING COMMISSION
PREPARED BY WORKS PROGRESS ADMINISTRATION

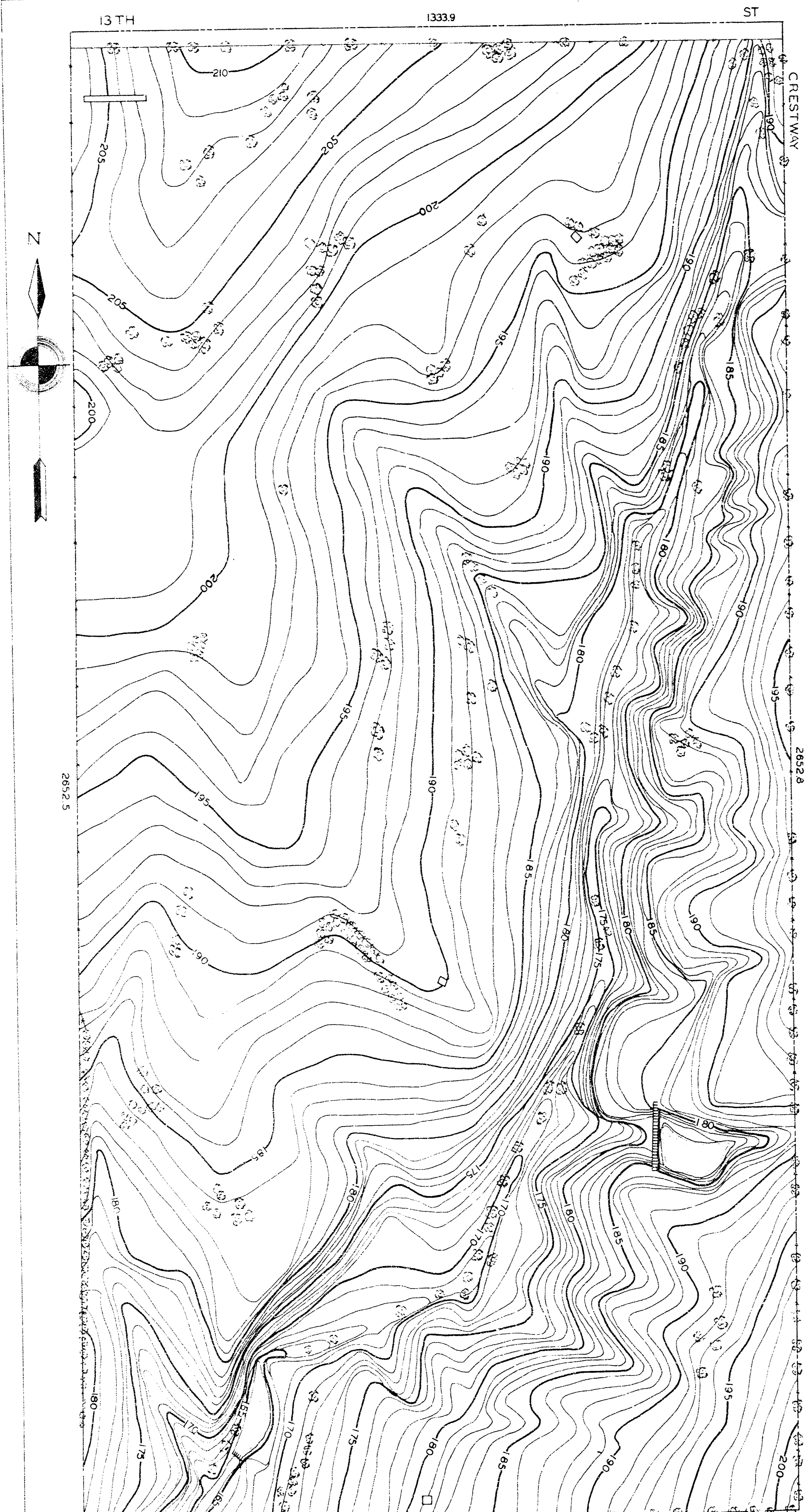
DRAWN BY R.F. FRIZZELLE. CHECKED BY L.K. WHITE.

SUPERVISED BY H.S. DENISON

1936 1/4 IN. MAN L. HANDLEY. SCALE 1"=100 FEET.

W. 1/2 NE. 1/4 SEC. 14 T. 27 S. R. 1 E.
City Eng. Dept. File

B.M.#3 NAIL IN EAST END OF SOUTH COPING OF FIRST ROAD CULVERT WEST OF CRESTWAY ON 13TH ELEV. 193.74
B.M.#4 IRON PIPE AT C. OF CRESTWAY AND 9TH ELEV. 201.67



CITY PLANNING COMMISSION
PREPARED BY WORKS PROGRESS ADMINISTRATION

DRAWN BY REFRIZZELLE CHECKED BY L.K.WHITE.

SUPERVISED BY H.S.DENISON

1936 INST. MAN L. HANDLEY. SCALE 1"=100 FEET.

W. 1/2 NE 1/4 SEC. 14 T. 27 S. R. 1 E.
City Eng. Dept. File

B.M.#3 NAIL IN EAST END OF SOUTH COPING OF FIRST ROAD CULVERT WEST OF CRESTWAY ON 13TH ELEV. 193.74

B.M.#4 IRON PIPE AT E. OF CRESTWAY AND 9TH ELEV. 201.67

