

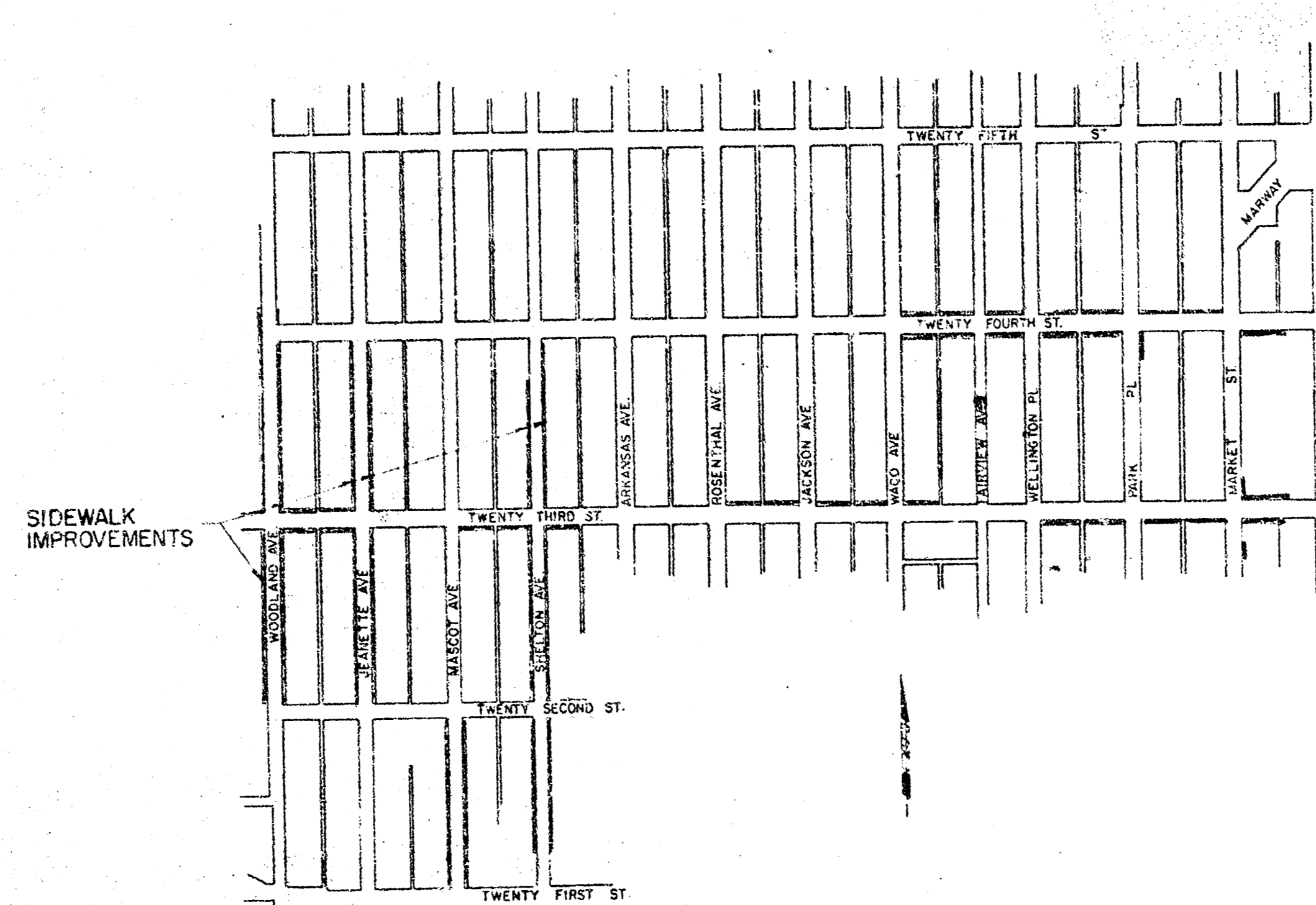
S. NO.	TOTAL
13	9

THE URBAN RENEWAL AGENCY
OF THE
WICHITA, KANSAS METROPOLITAN AREA
WICHITA, KANSAS
AS CONSTRUCTED
PLANS FOR

DRAINAGE & STREET IMPROVEMENTS
WACO-FINN PROJECT KANSAS A-5-1
PHASE II, PART 3

INDEX

1. TITLE SHEET
2. TYPICAL SECTIONS
3. 23RD STREET SIDEWALK AND RETAINING WALL PLAN
4. 24TH STREET SIDEWALK AND RETAINING WALL PLAN
5. WOODLAND AVENUE SIDEWALK AND RETAINING WALL PLAN
6. JEANETTE AVENUE SIDEWALK AND RETAINING WALL PLAN
7. MASCO AVENUE AND SHELTON AVENUE SIDEWALK AND RETAINING WALL PLAN
8. SHELTON AVENUE SIDEWALK AND RETAINING WALL PLAN



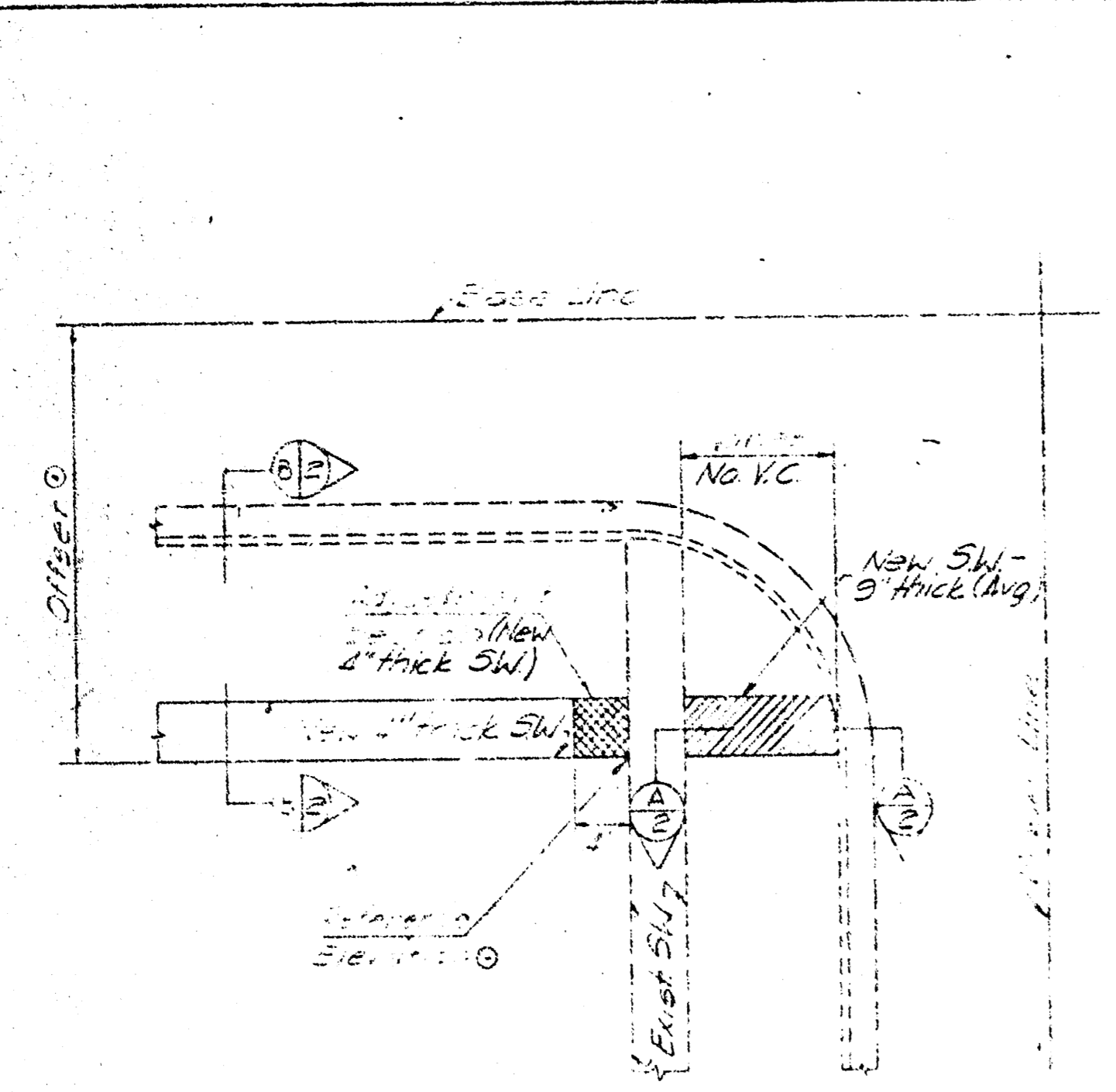
JULY, 1971

PROFESSIONAL ENGINEERING CONSULTANTS
ENGINEERS
WICHITA, KANSAS

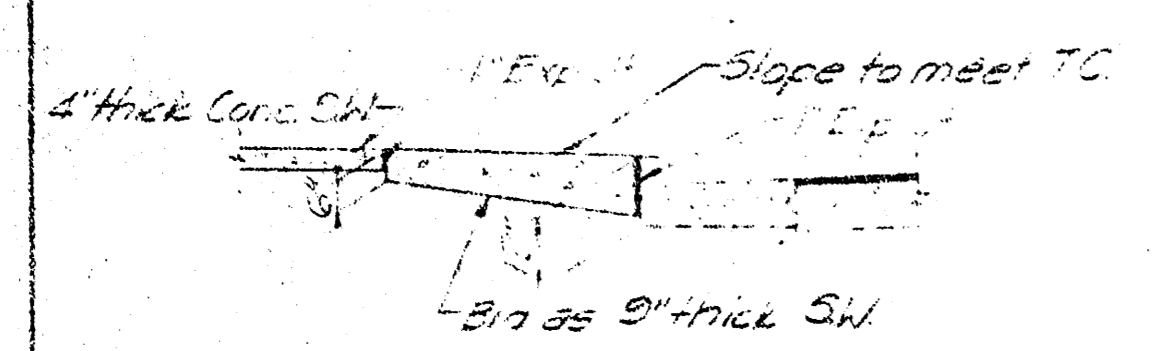
REV. NO.	DESCRIPTION	DATE	BY
1	As Constructed	8-31-70	G.L.K.
SUBMITTED			
PHASE II, PART 3			
THE URBAN RENEWAL AGENCY WICHITA, KANSAS METROPOLITAN AREA			
TITLE SHEET & INDEX			
WACO-FINN PROJECT KANS. A-5-1			
PROFESSIONAL ENGINEERING CONSULTANTS ENGINEERS WICHITA, KANSAS			

Designed by: G.C.M., G.G., L.F., E.S.
Drawn by: W.H.K.
Checked by: W.H.K.

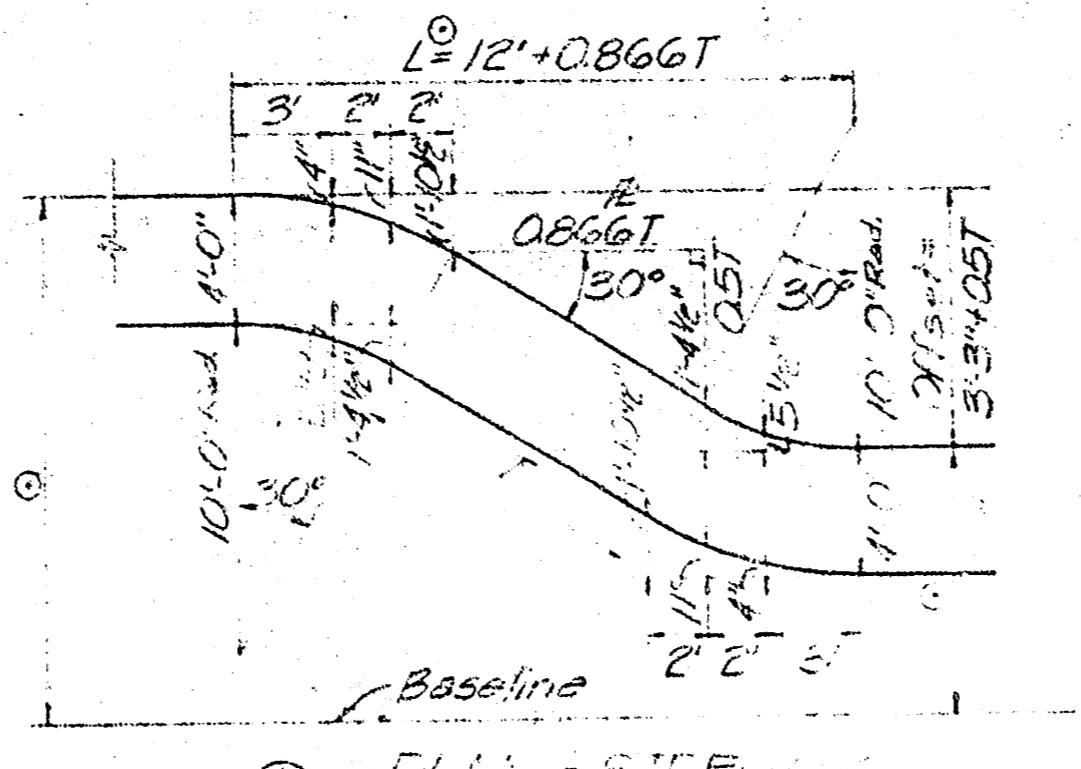
SHEET NO.	TOTAL SHEETS
2-3	9



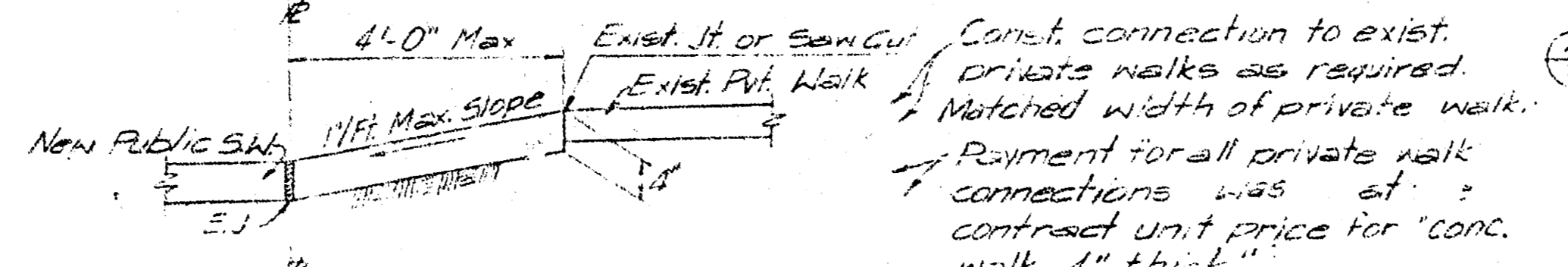
TYPICAL SIDEWALK INTERSECTION
(All New Sidewalk)



SECTION 1

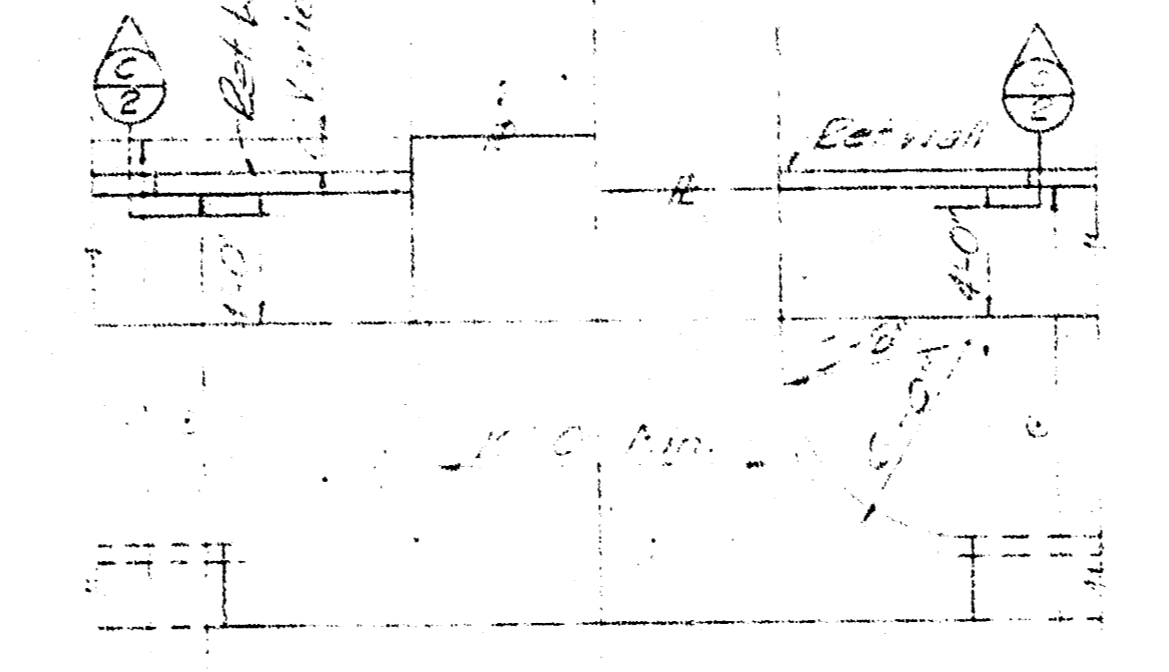


PLAN - SIDEWALK CURB CUT

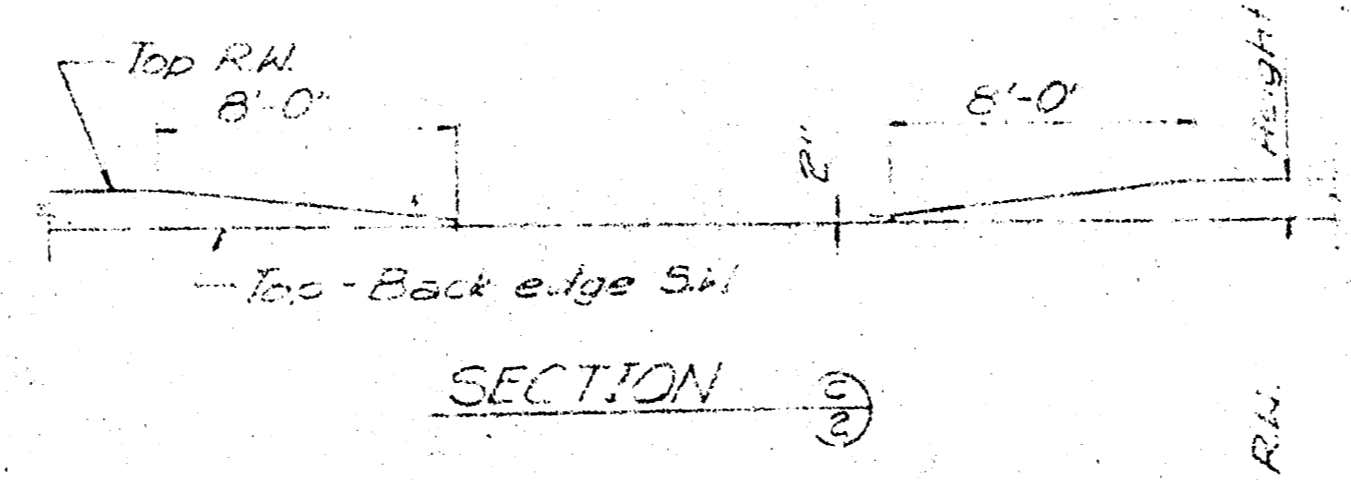


CONNECTION TO EXISTING PRIVATE RESIDENCE WALK

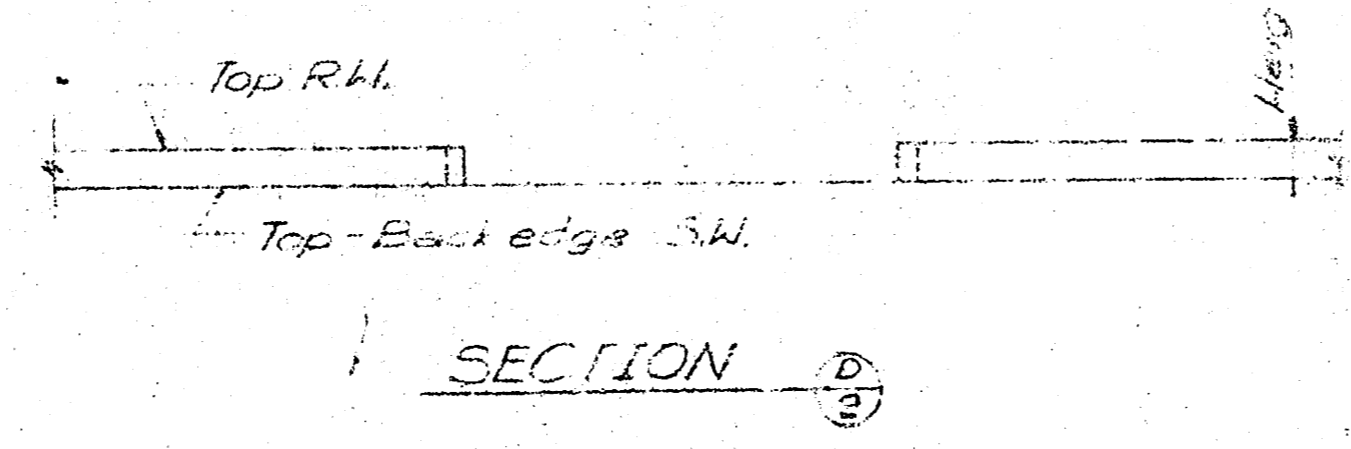
SECTION 2



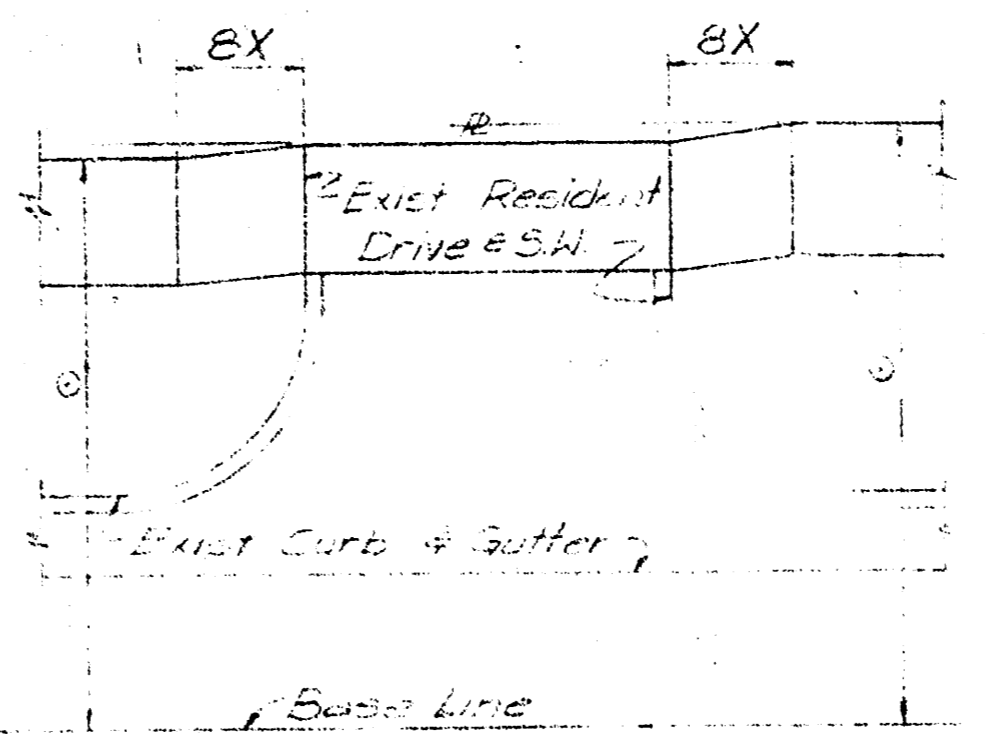
PLAN - TAPPED RETAINING WALL
Standard Residence Drive



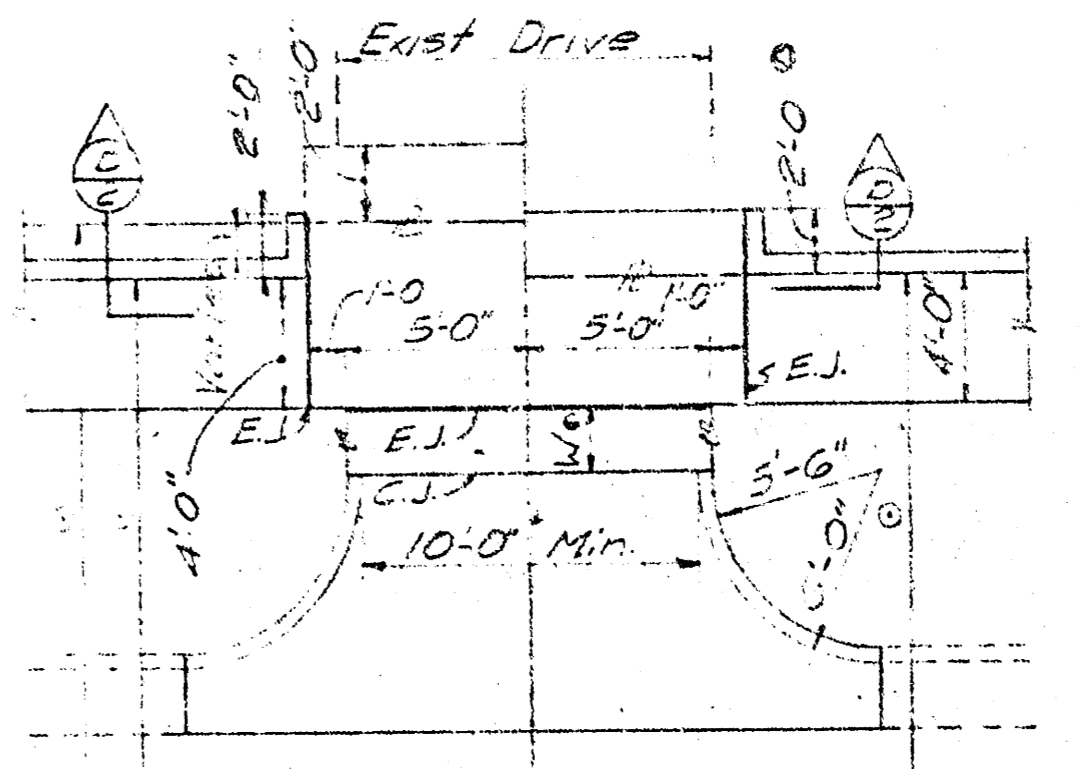
SECTION 3



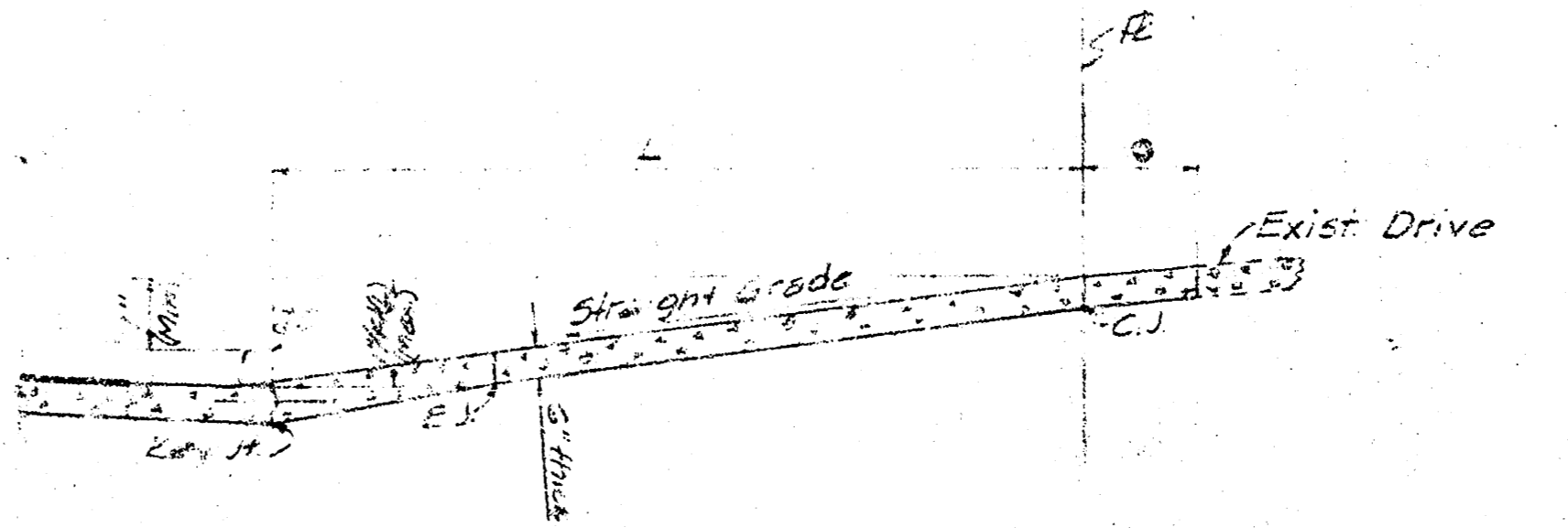
SECTION 4



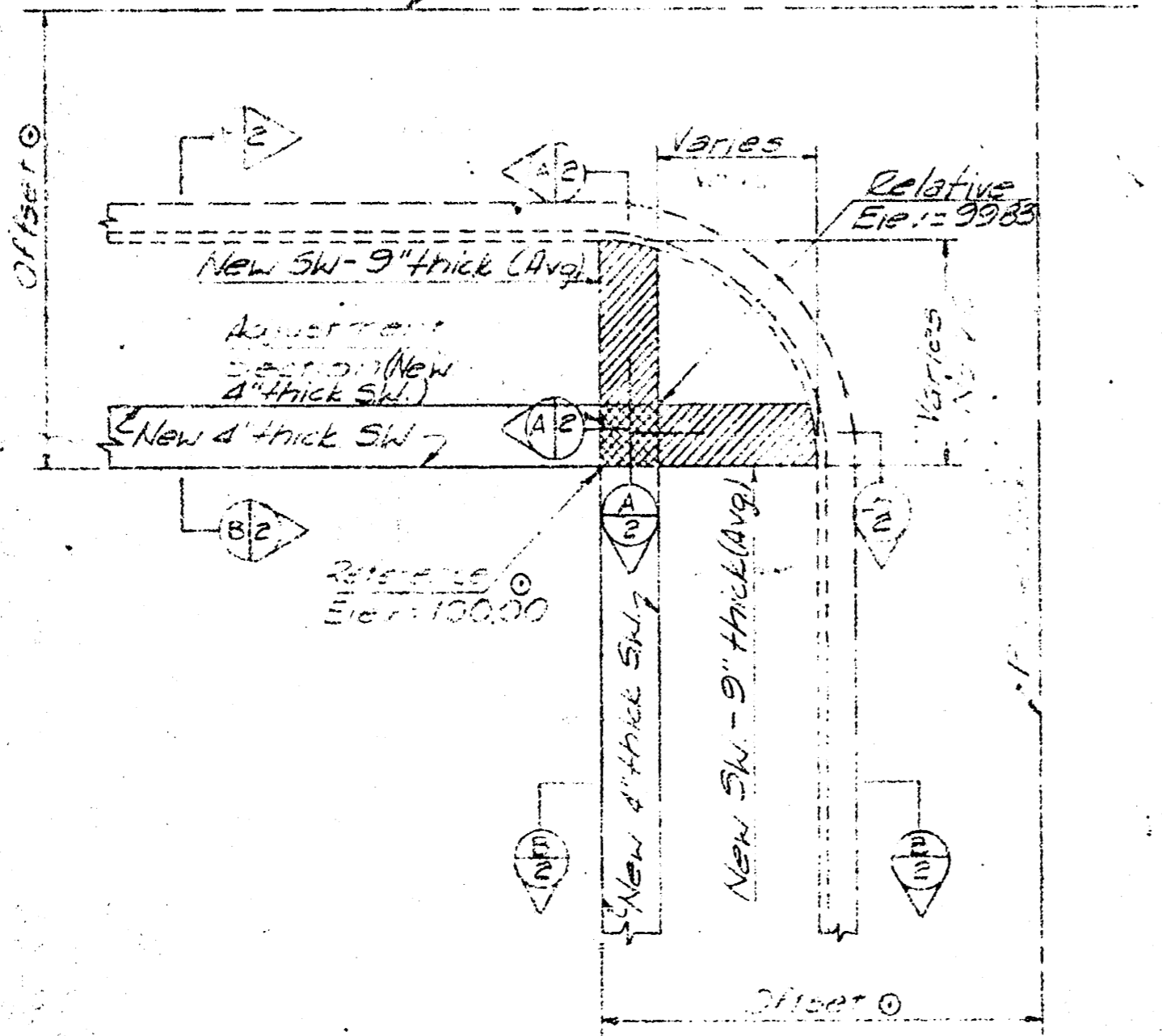
PLAN - RAMP TYPE
Residence Drive



PLAN - TURNED RETAINING WALL
Standard Residence Drive

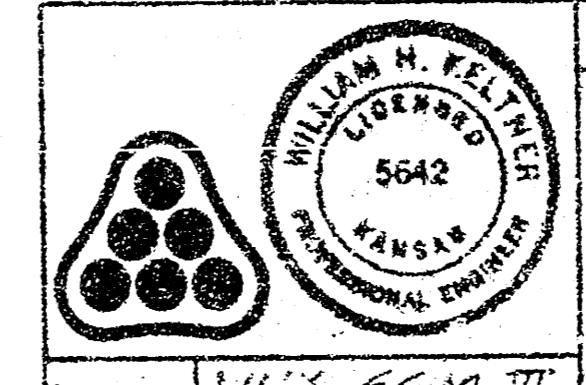


SECTION 5



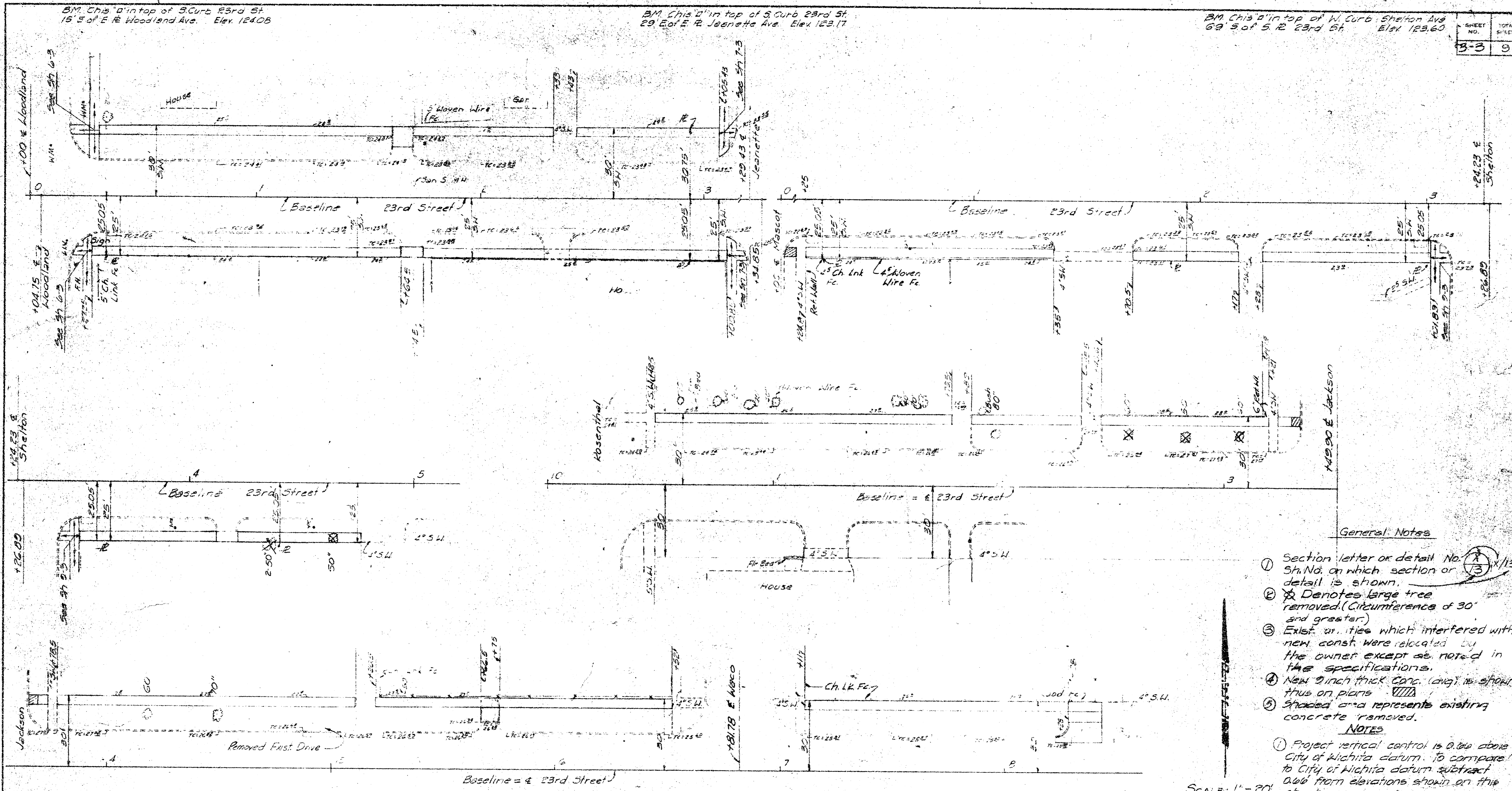
TYPICAL SIDEWALK INTERSECTION
(All New Sidewalk)

- Noted on Plan sheets
- Except as noted on plan sheets.
- Const. connection to Exist. drive -
- Use Const. Joint (C.J.) only when W is greater than 4'-0\"/>



1	No Constructed	8-31-72	G.L.K.
REV. NO.	DESCRIPTION	DATE	BY
SUBMITTED	JUL 21 1971		

PHASE II, PART 3
THE URBAN RENEWAL AGENCY
WICHITA, KANSAS METROPOLITAN AREA
TYPICAL SECTIONS
SIDEWALK IMPROVEMENTS I
WACO-FINN PROJECT KANS. A-5-1
PROFESSIONAL ENGINEERING CONSULTANTS
ENGINEERS
WICHITA, KANSAS



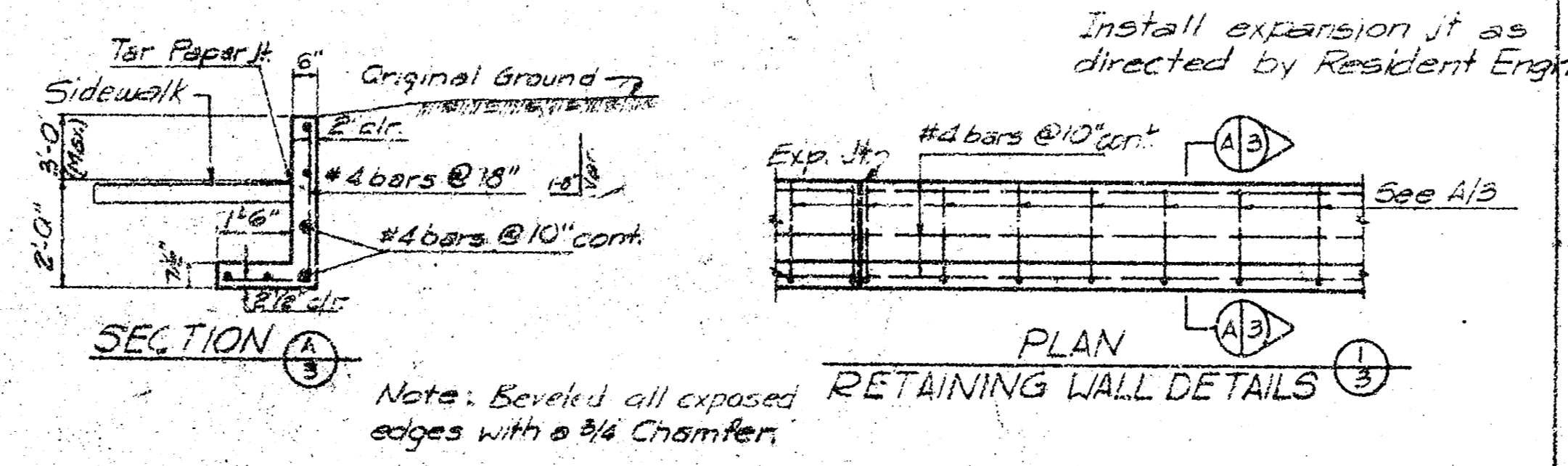
General Notes

- ① Section letter or detail No. in Sta. No. on which section or detail is shown.
- ⊗ Denotes large tree removed. (Circumference of 30" and greater.)
- ⊕ Exist. ut. lines which interfered with new const. were relocated by the owner except as noted in the specifications.
- ⊗ New 2 inch thick conc. (cont.) is shown thru on plans.
- ⊗ Shaded area represents existing concrete removed.

NOTES

① Project vertical control is 0.00 above City of Wichita datum. To compare to City of Wichita datum subtract 0.00 from elevations shown on this sheet.

SCALE: 1" = 20'

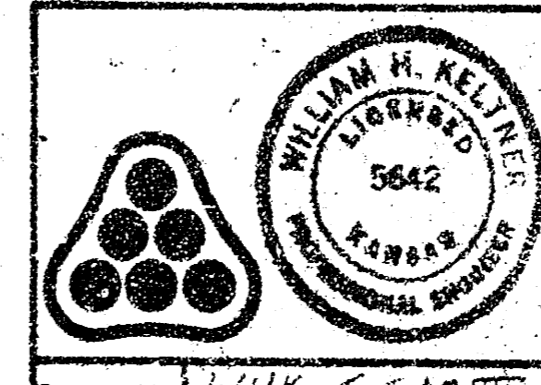


Note: Beveled all exposed edges with a 3/4 Chamfer.

B.M. Chis 'd' top of S. Curb 23rd St. 30' E. of E. R. Jackson Ave. El. 121.09

B.M. Chis 'd' top of S. Curb of 23rd St. 30' E. of E. R. Rosenthal Ave. El. 123.07

B.M. Chis 'd' top of S. Curb of 23rd St. 30' E. of E. R. Waco Ave. El. 123.39



Designed by W.H.K. & C.M. III
 Drawn by G.C.M. & L.F. E.S.
 Checked by W.H.K.

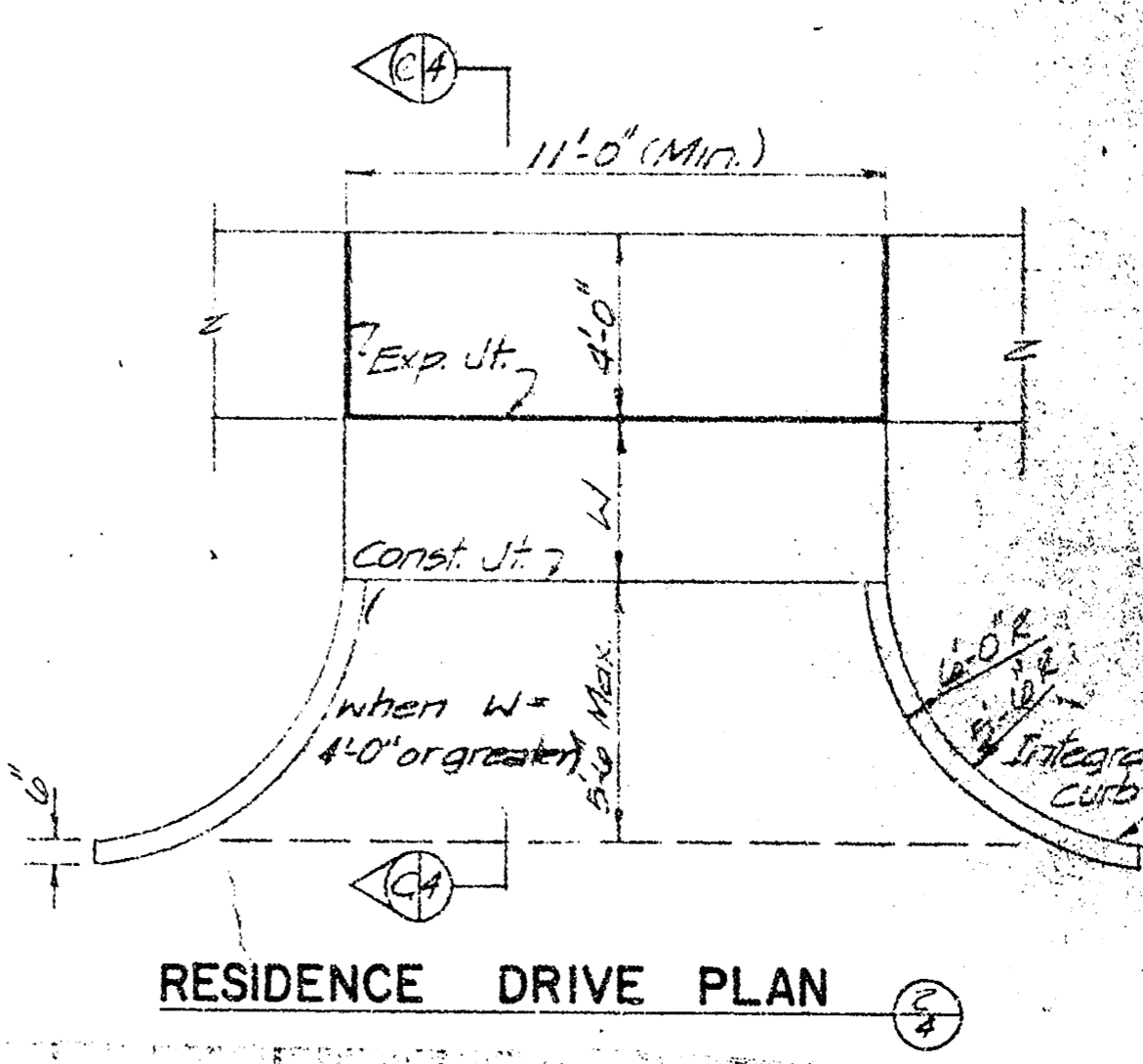
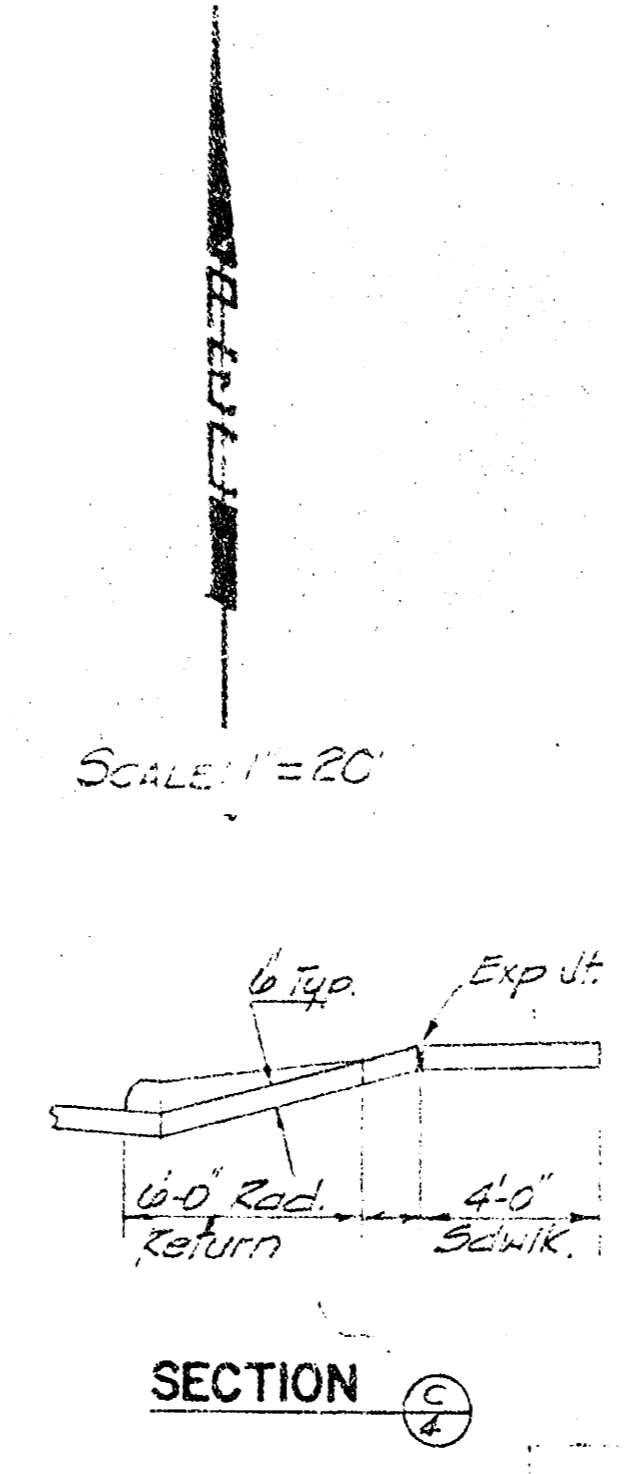
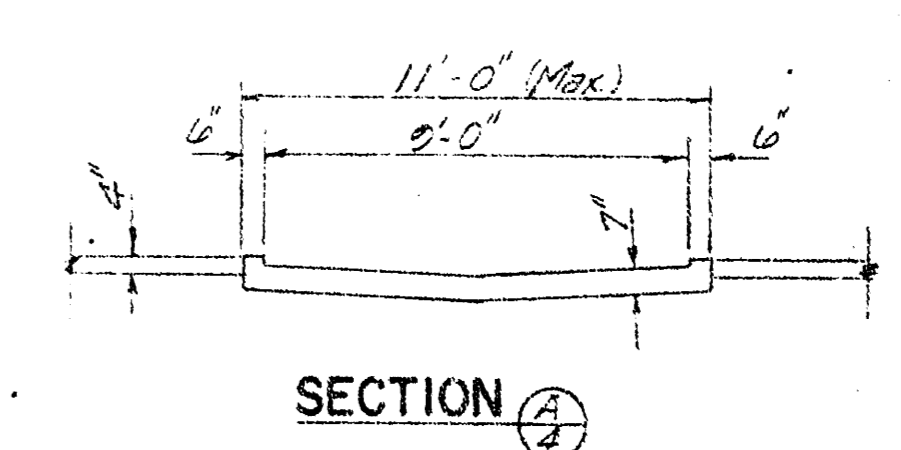
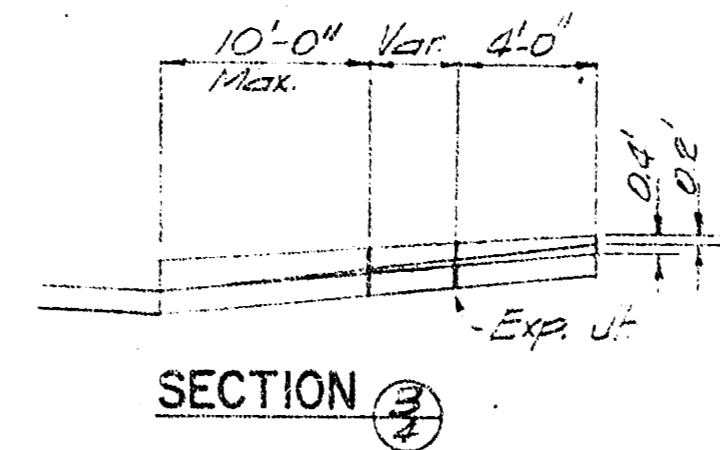
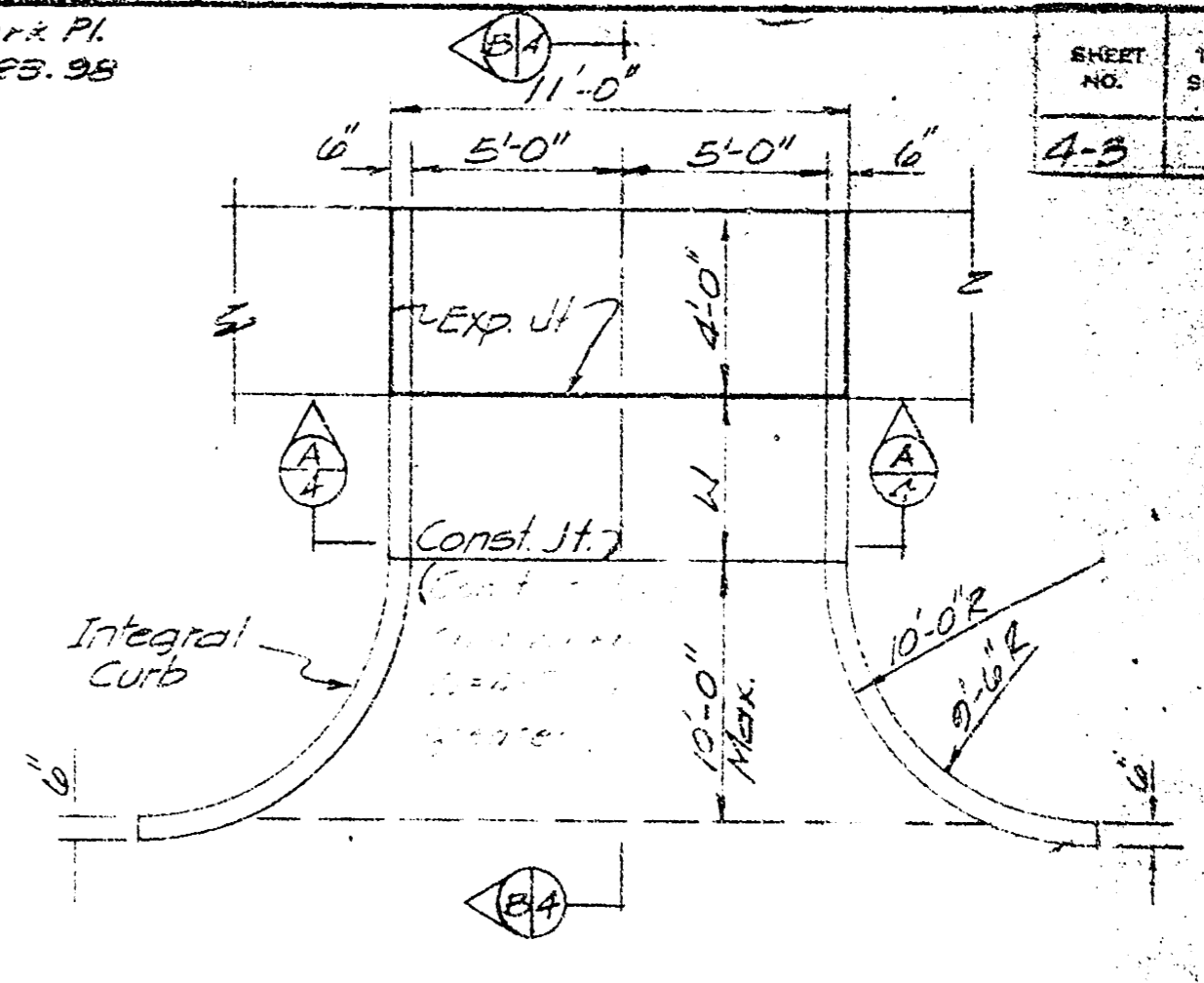
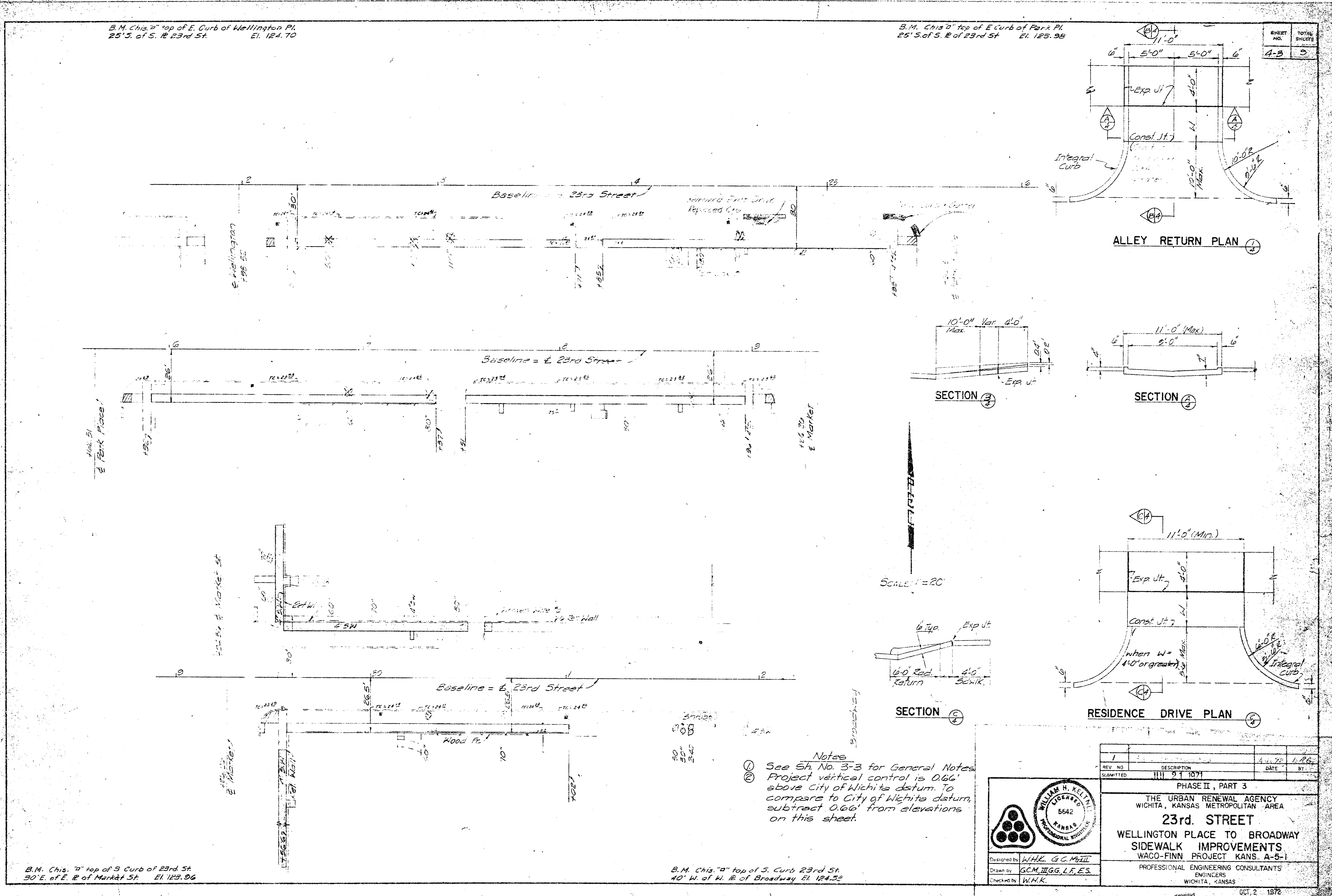
REV. NO.	DESCRIPTION	DATE	BY
1	As Constructed	8-31-78	G.L.K.

PHASE II, PART 3
 THE URBAN RENEWAL AGENCY
 WICHITA, KANSAS METROPOLITAN AREA
23rd STREET
 WOODLAND AVE. TO WACO AVE.
 SIDEWALK IMPROVEMENTS
 WACO-FINN PROJECT KANS. A-5-1
 PROFESSIONAL ENGINEERING CONSULTANTS
 WICHITA, KANSAS

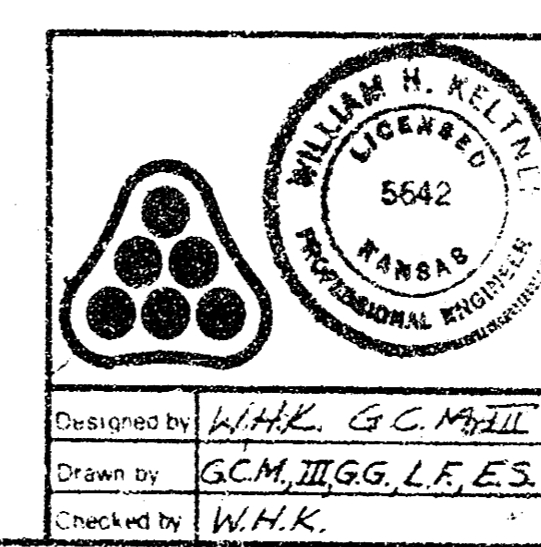
B.M. Chis. "D" top of E. Curb of Wellington Pl.
25' S. of S. R. of 23rd St. El. 124.70

B.M. Chis. "D" top of E. Curb of Park Pl.
25' S. of S. R. of 23rd St. El. 125.98

SHEET NO.	TOTAL SHEETS
4-5	5



Notes
 ① See Sh. No. 3-3 for General Notes
 ② Project vertical control is 0.66' above City of Wichita datum. To compare to City of Wichita datum, subtract 0.66' from elevations on this sheet.



REV. NO.	DESCRIPTION	DATE	BY
1	III 31 1971	4.1.72	L.P.G.

PHASE II, PART 3
 THE URBAN RENEWAL AGENCY
 WICHITA, KANSAS METROPOLITAN AREA
23rd STREET
 WELLINGTON PLACE TO BROADWAY
 SIDEWALK IMPROVEMENTS
 WACO-FINN PROJECT KANS. A-5-1
 PROFESSIONAL ENGINEERING CONSULTANTS
 ENGINEERS
 WICHITA, KANSAS

B.M. Chis. "D" top of S. Curb of 23rd St.
30' E. of E. R. of Market St. El. 125.96

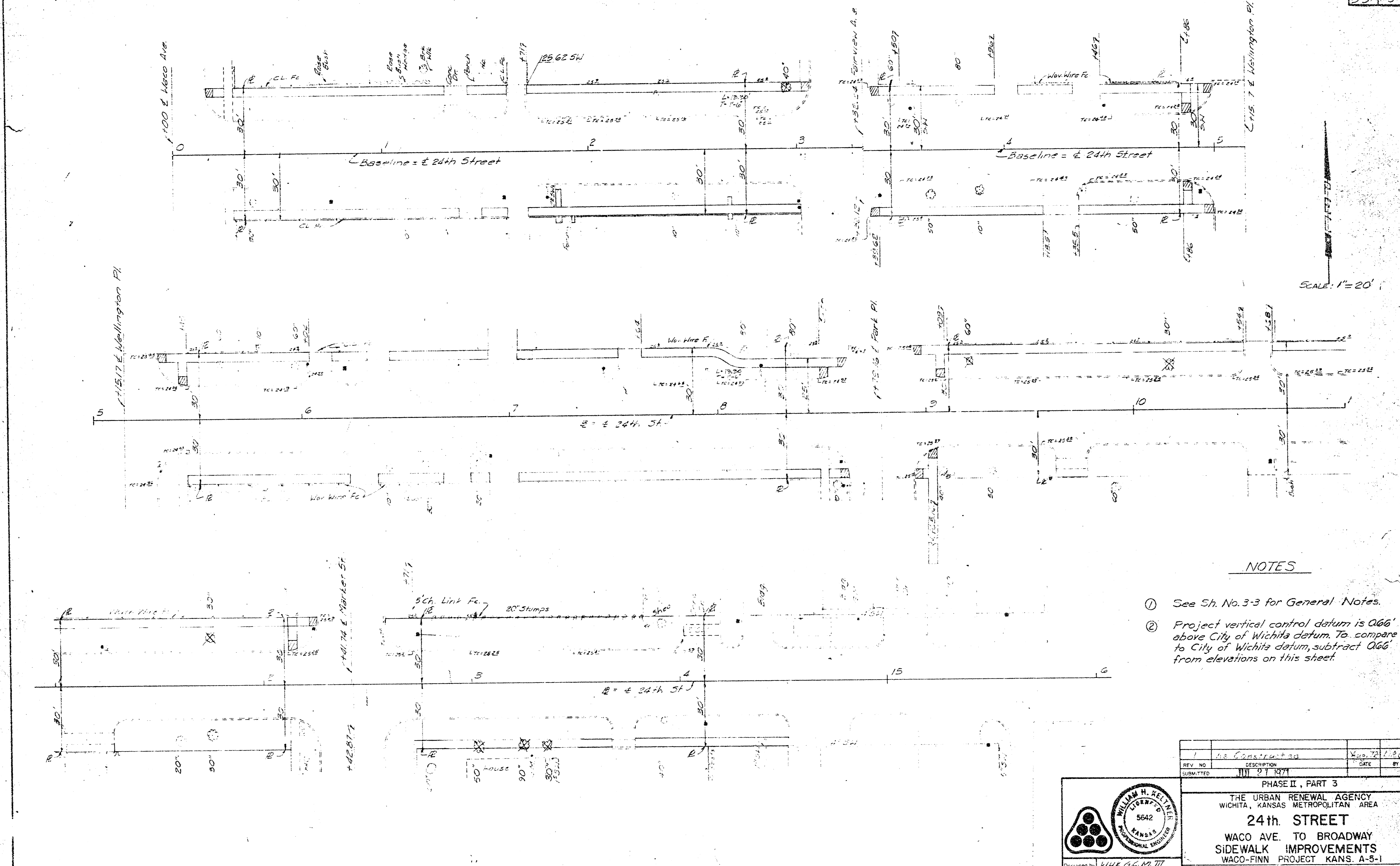
B.M. Chis. "D" top of S. Curb 23rd St.
40' W. of W. R. of Broadway El. 124.52

OCT. 2 1972

B.M. Chis. 2' in top of N. Curb of 24th St.
Waco Ave. @ E end of Return. El. 125.66

B.M. Chis. 2' in top of N. Curb 24th St.
10' W. of W.R. Farmer Ave. El. 125.11

SHEET NO.	TOTAL SHEETS
53	9



SCALE: 1" = 20'

NOTES

- ① See Sh. No. 3-3 for General Notes.
- ② Project vertical control datum is 066' above City of Wichita datum. To compare to City of Wichita datum, subtract 066' from elevations on this sheet.

B.M. Chis. 2' in top of N. Curb of 24th St.
20' E of E. Wellington Place. El. 124.09

B.M. Chis. 2' in top of S. Curb of 24th St.
25' W. of W. R. of Market St. El. 125.22

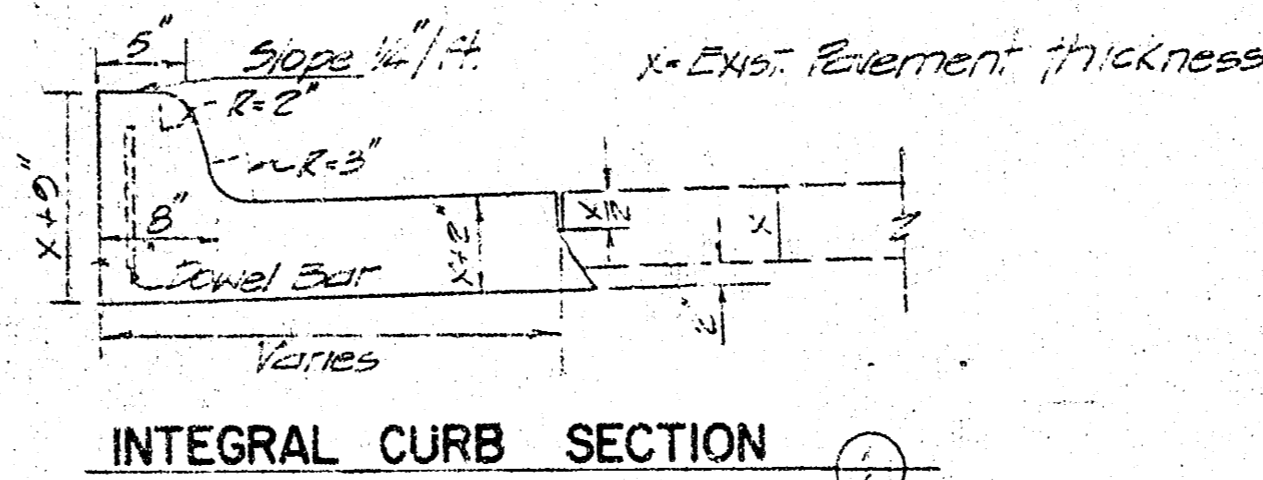
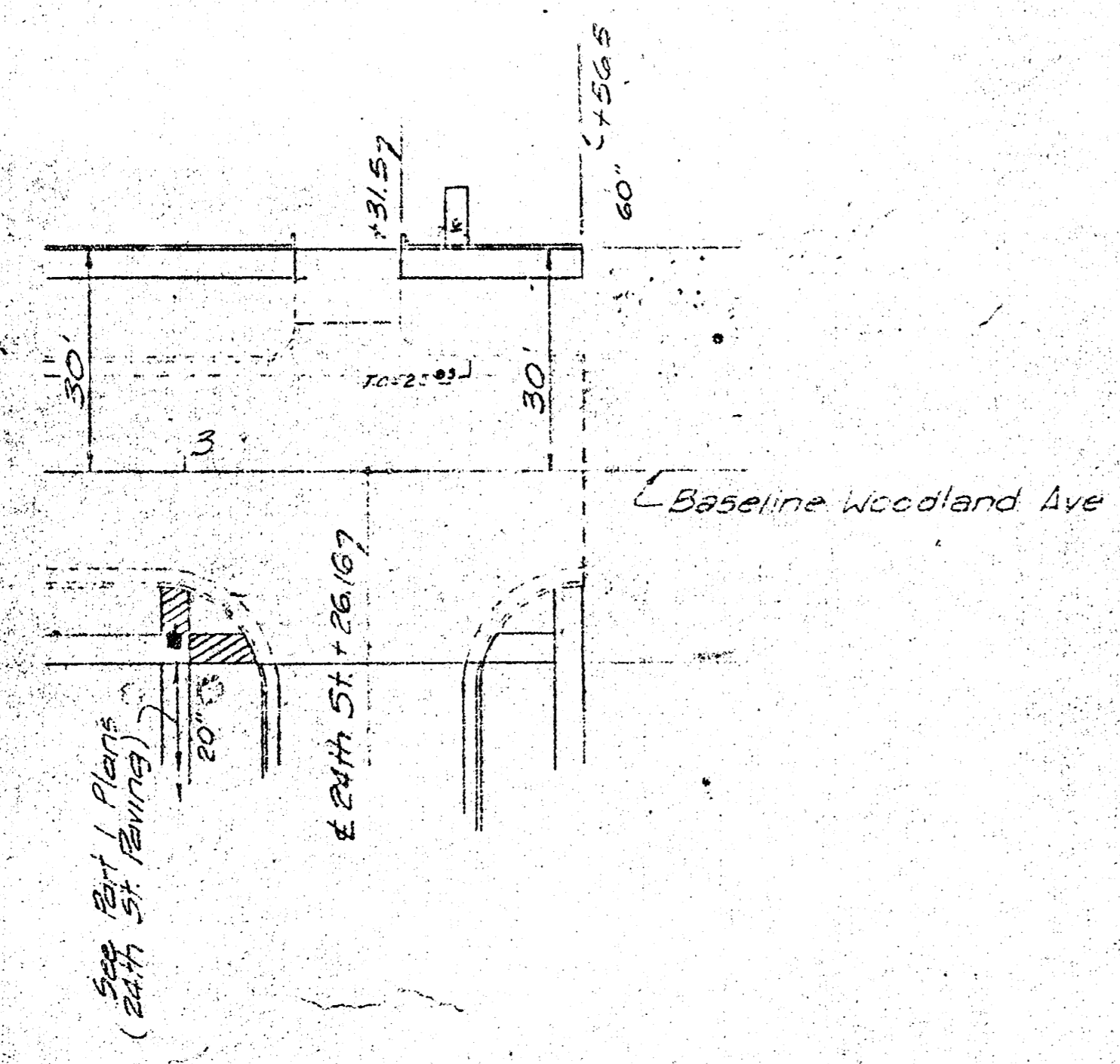
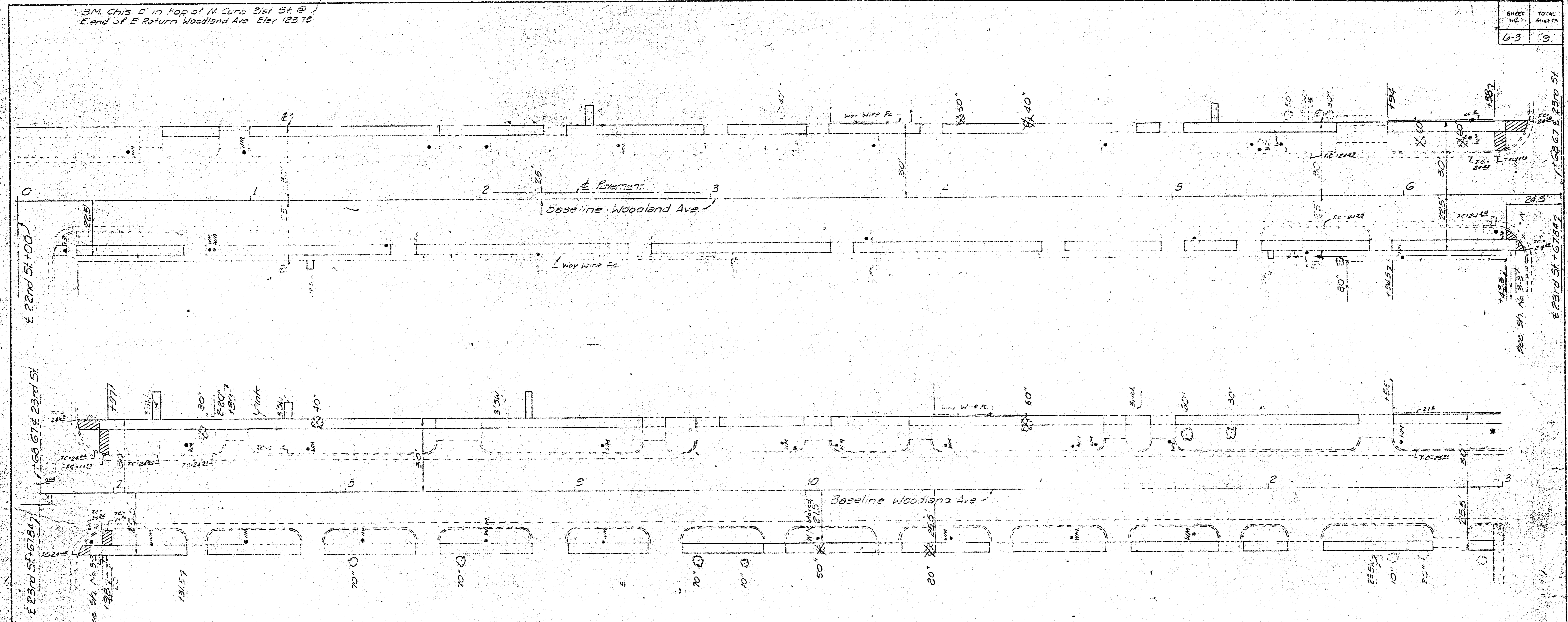
B.M. Chis. 2' in top of S. Curb of 24th St.
35' E of E. Park Place. El. 125.27

B.M. Chis. 2' in top of S. Curb of 24th St.
30' W. of W. R. of Broadway. El. 125.73

	Designed by W.H.K. G.C.M. III
	Drawn by G.C.M. III, L.F.E.S.
Checked by W.H.K.	PHASE II, PART 3 THE URBAN RENEWAL AGENCY WICHITA, KANSAS METROPOLITAN AREA 24th STREET WACO AVE. TO BROADWAY SIDEWALK IMPROVEMENTS WACO-FINN PROJECT KANS. A-5-1 PROFESSIONAL ENGINEERING CONSULTANTS WICHITA, KANSAS

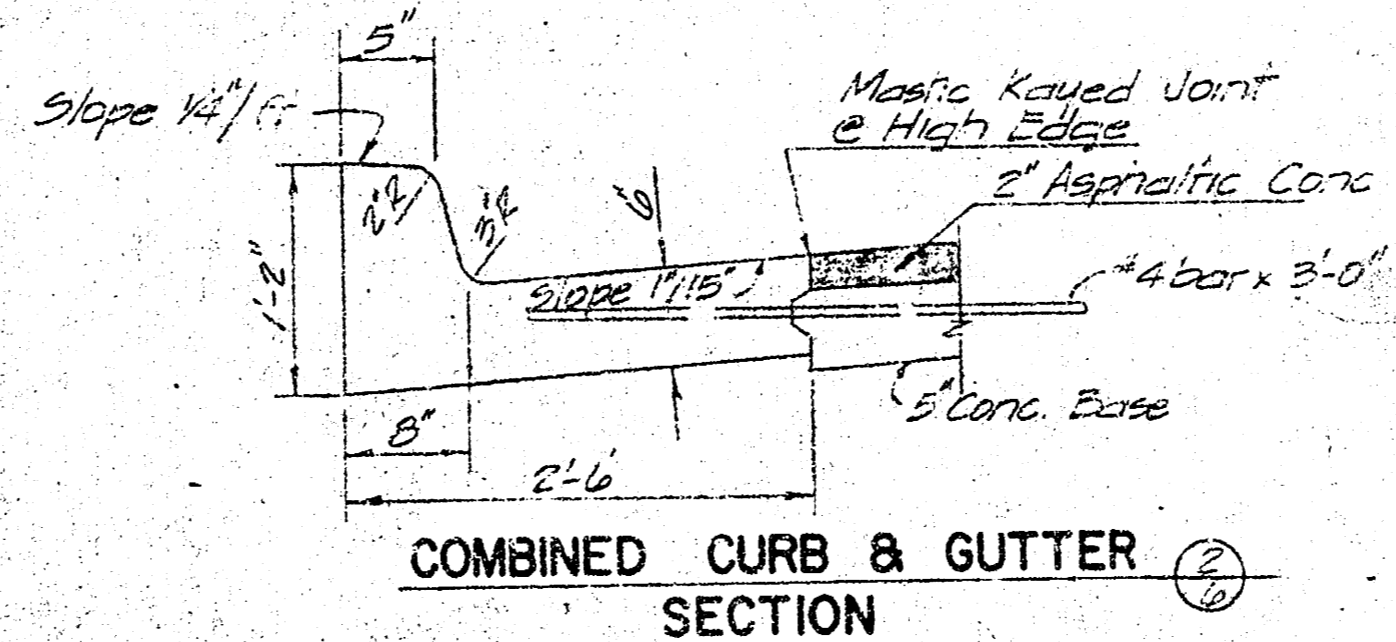
B.M. Chis. E' in top of N. Curb 23rd St @
E end of E Return Woodland Ave Elev. 128.75

SHEET NO.	TOTAL SHEETS
6-3	9

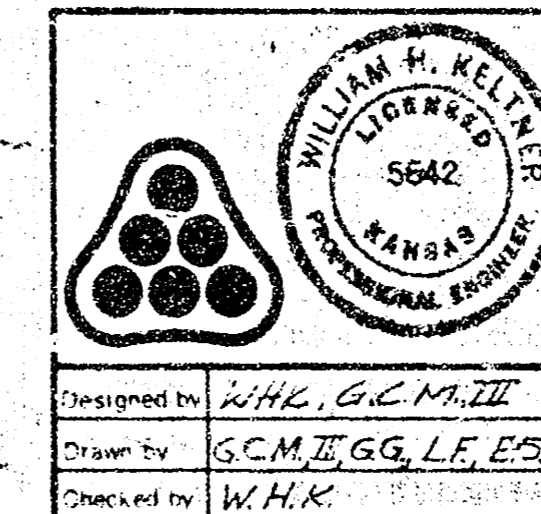


- Notes**
- See General Notes on sheet No 3-3.
 - Project vertical control is 0.66 above City of Wichita datum. To compare to City of Wichita datum subtract 0.66 from elevations shown on this sheet.

SCALE: 1" = 20'



B.M. Chis. D' in top of S. Curb 23rd St
15' E of E. Woodland Ave. Elev. 124.04

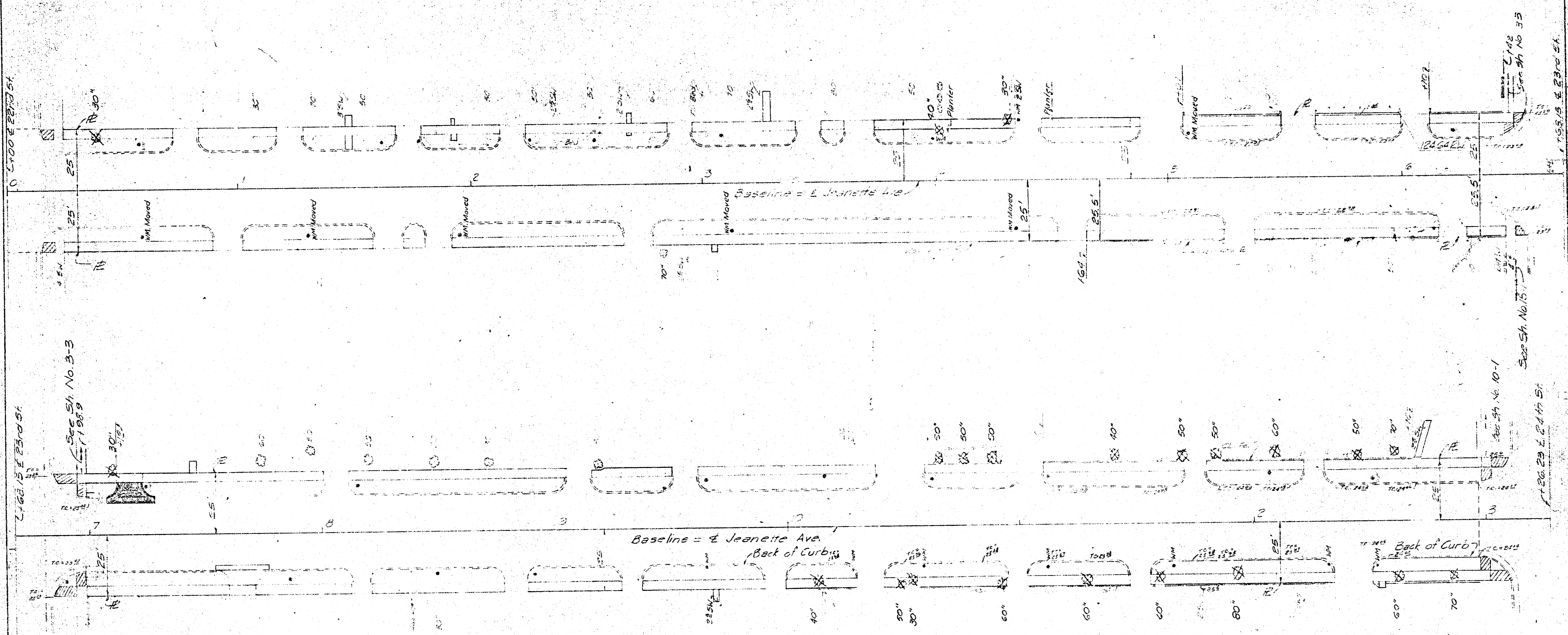


1	As Constructed	Aug. 22	L.P.G.
REV. NO.	DESCRIPTION	DATE	BY
1	PHASE II, PART 3		

THE URBAN RENEWAL AGENCY
WICHITA, KANSAS METROPOLITAN AREA
WOODLAND AVENUE
22nd STREET TO 24th STREET
SIDEWALK IMPROVEMENTS
WACO-FINN PROJECT KANS. A-5-1
PROFESSIONAL ENGINEERING CONSULTANTS
WICHITA, KANSAS

BM Chis 11 in top of N. Curb 23+34.8
End of E Return of Jeanette Ave Elev 123.47'

SHEET NO.	TOTAL SHEETS
7-3	9



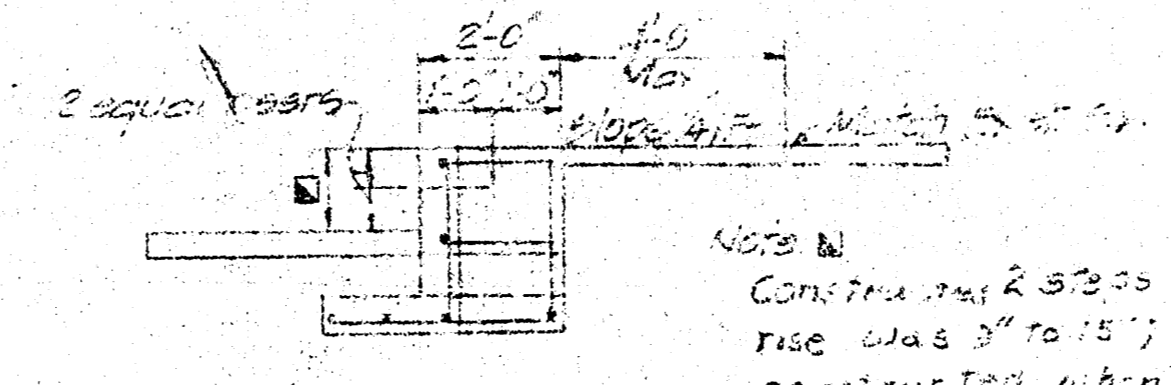
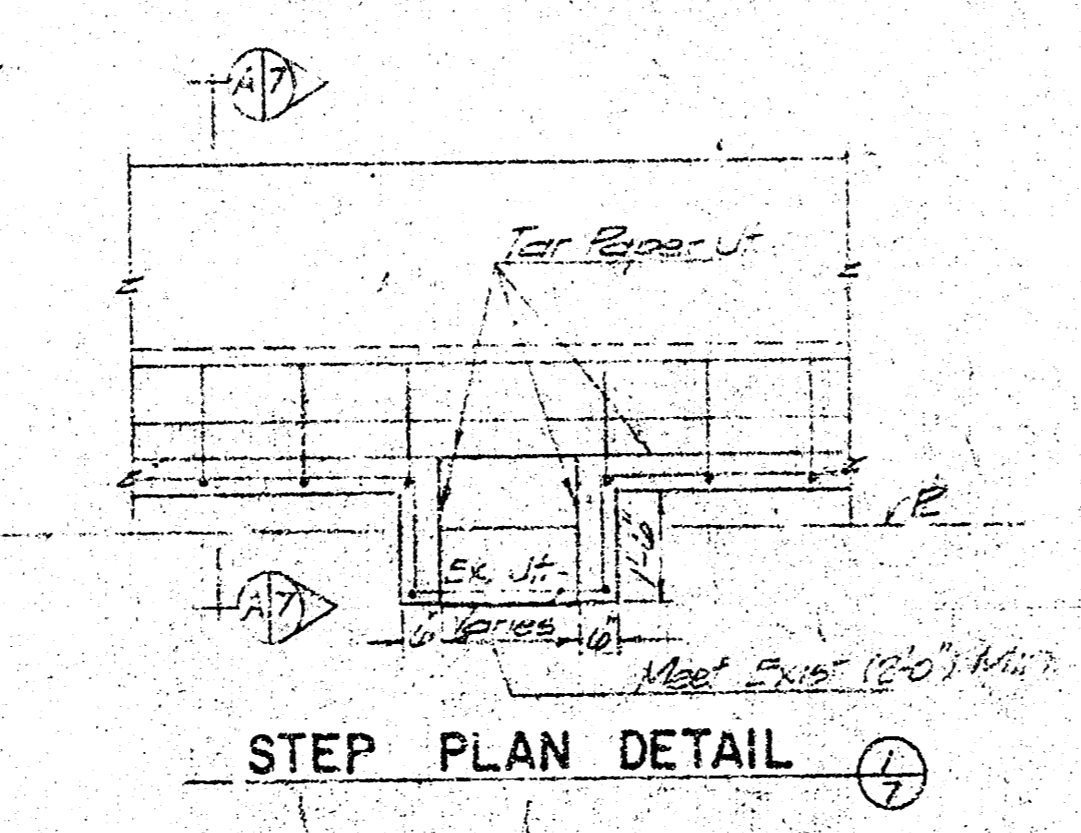
L 63.15 E 23+00.51

SEE SH No. 3-3
1/19/59

Baseline = E Jeanette Ave
Back of Curbs

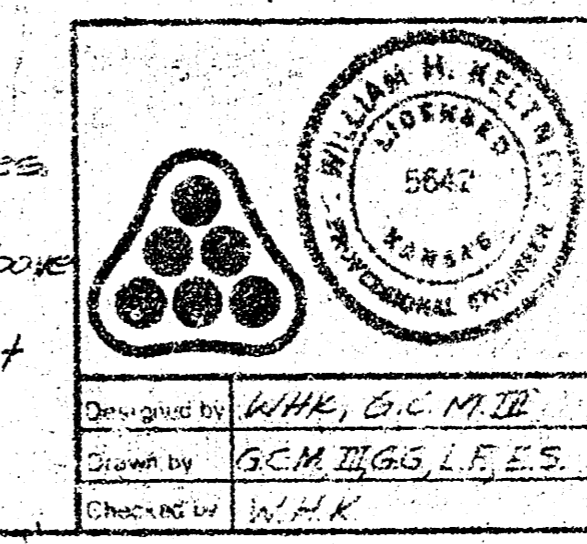
SEE SH No. 10-1
1/20/59

SCALE: 1"=20'



NOTE: Construct curb 23" high when rise was 3" or less; 3 cross constructed when rise was greater than 3".

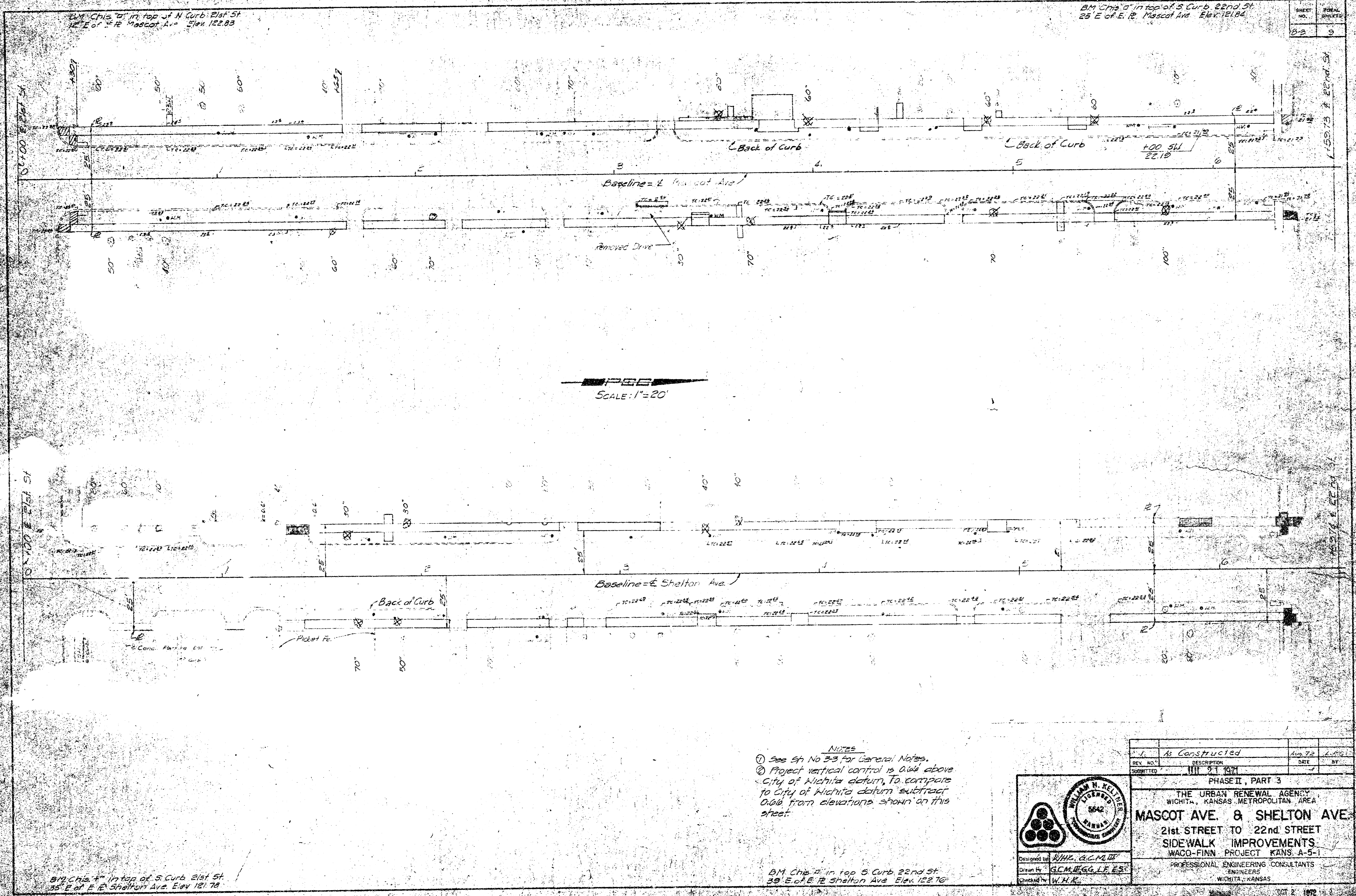
- Notes
- See Sh. No. 3-3 for General Notes.
 - Project vertical control is 0.66' above City of Wichita datum. To compare to City of Wichita datum, subtract 0.66' from elevations shown on this sheet.



1	As Constructed	Aug. 25	W.H.K.
REV. NO.	DESCRIPTION	DATE	BY
1	As Constructed	Aug. 25	W.H.K.
2	As Constructed	Aug. 25	W.H.K.
3	As Constructed	Aug. 25	W.H.K.

PHASE II, PART 3
THE URBAN RENEWAL AGENCY
WICHITA, KANSAS METROPOLITAN AREA
JEANETTE AVENUE
22nd STREET TO 24th STREET
SIDEWALK IMPROVEMENTS
WACO-FINN PROJECT KANS. A-5-1
PROFESSIONAL ENGINEERING CONSULTANTS
ENGINEERS
WICHITA, KANSAS

BM Chis 13 in top of S. Curb 23+04.51
20' E of E 12 Jeanette Ave Elev 123.17'



BM Chis 1" in top of N Curb 21st St
12' E of E E Mascot Ave. Elev 122.83

BM Chis 1" in top of S Curb 22nd St
25' E of E E Mascot Ave. Elev 121.84

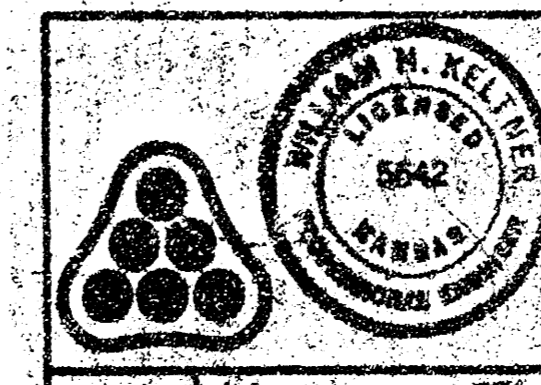
SHEET NO.	TOTAL SHEETS
02	5

SCALE: 1"=20'

- NOTES
- See Sp No 2-3 for General Notes.
 - Project vertical control is 0.45' above City of Wichita datum. To compare to City of Wichita datum subtract 0.45' from elevations shown on this sheet.

BM Chis 1" in top of S Curb 21st St
25' E of E E Shelton Ave. Elev 121.78

BM Chis 1" in top of S Curb 22nd St
25' E of E E Shelton Ave. Elev 123.76



REV NO.	DESCRIPTION	DATE	BY
1	As Constructed	Aug 72	LOG
2			
3			
4			
5			
6			
7			
8			
9			
10			
11			
12			
13			
14			
15			
16			
17			
18			
19			
20			
21			
22			
23			
24			
25			
26			
27			
28			
29			
30			
31			
32			
33			
34			
35			
36			
37			
38			
39			
40			
41			
42			
43			
44			
45			
46			
47			
48			
49			
50			

PHASE II, PART 3
THE URBAN RENEWAL AGENCY
WICHITA, KANSAS METROPOLITAN AREA
MASCOT AVE. & SHELTON AVE.
21st STREET TO 22nd STREET
SIDEWALK IMPROVEMENTS
WACO-FINN PROJECT KANS. A-5-1
PROFESSIONAL ENGINEERING CONSULTANTS
ENGINEERS
WICHITA, KANSAS

OCT 2 1972

