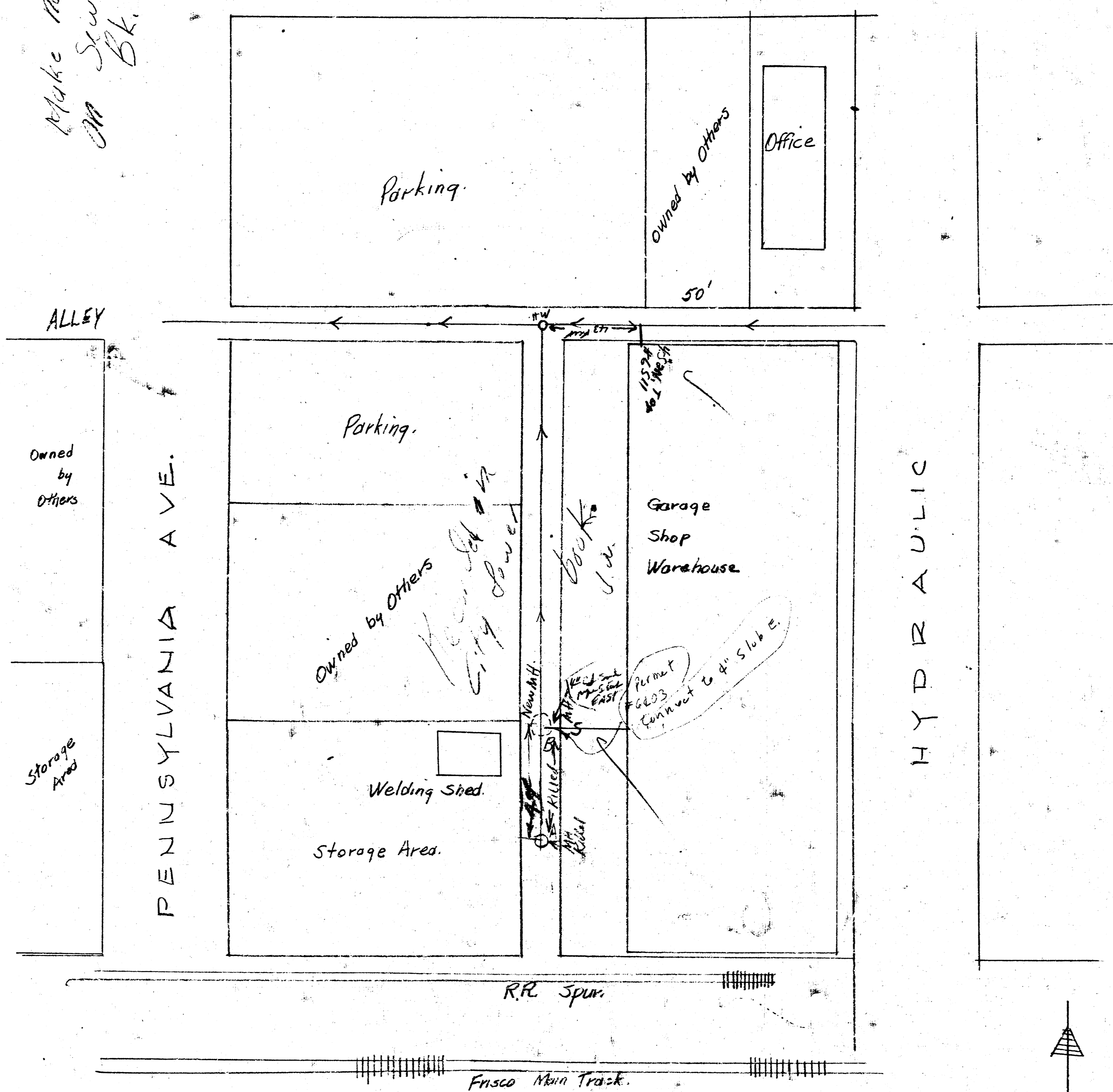


Make notes on Sewer Bk.

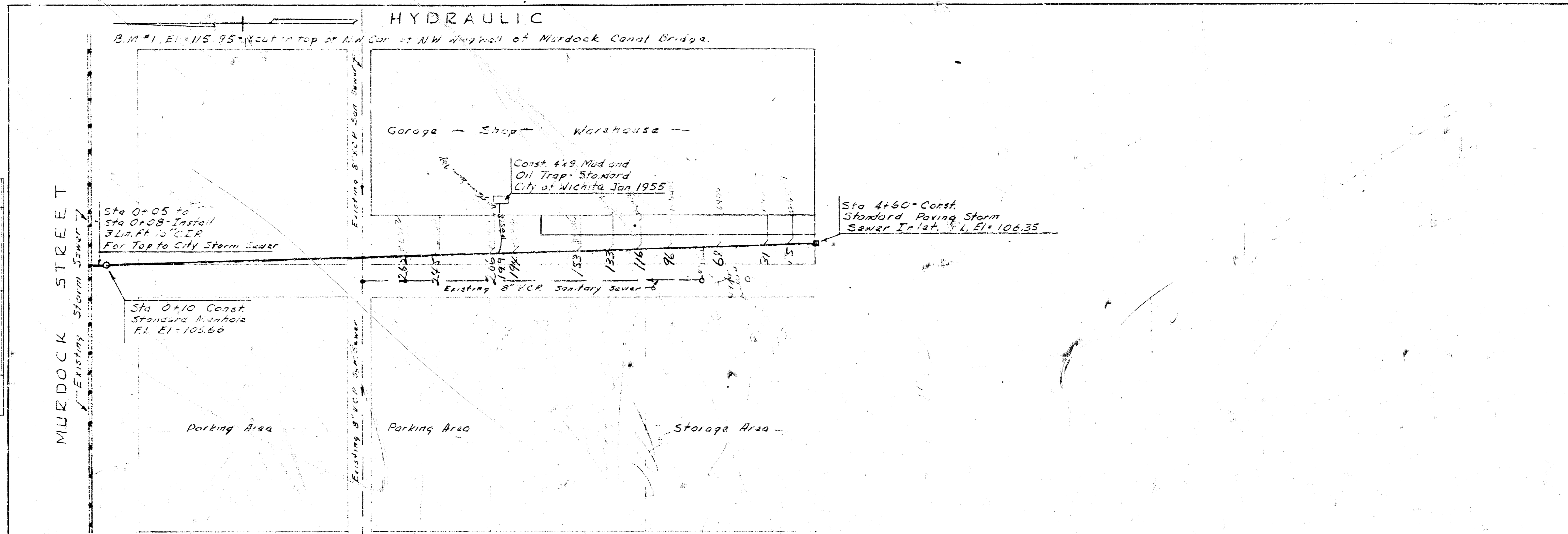
MURDOCK STREET



PLOT PLAN SCALE 1" = 30'

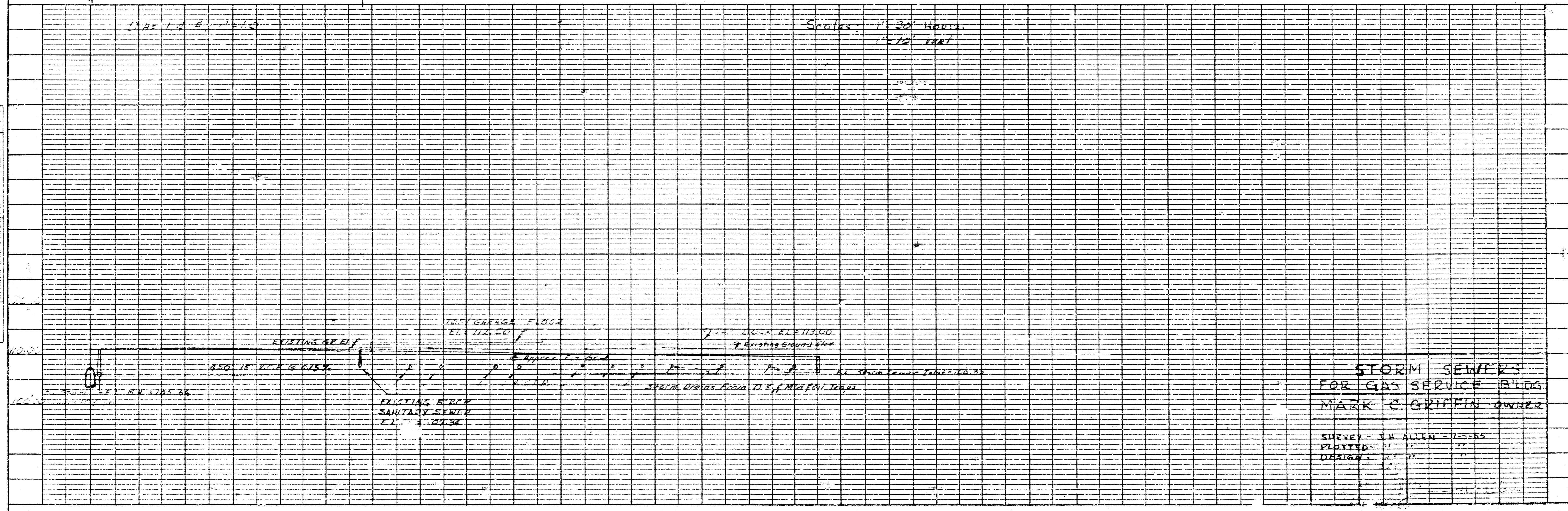
We propose to abandon sewer from point A to B. Construct new M.H. at B. Existing line has failed and is stopped between these points. Area paved and dirt cover at A is 6' ±. Cover at B is 1' ±. Sewer service will not be required beyond point B. Contractor agrees to construct M.H. B as required.

Gas Service Building
M.G. Griffin



PLAN
 SHEET NO. 1
 DATE: 7-1-57
 DRAWN BY: [illegible]
 CHECKED BY: [illegible]
 INCHES: 1" = 40'

PROFILE
 SHEET NO. 2
 DATE: 7-1-57
 DRAWN BY: [illegible]
 CHECKED BY: [illegible]
 INCHES: 1" = 40'



STORM SEWERS
 FOR GAS SERVICE BLDG
 MARK C. GRIFFIN - OWNER

SHOWN BY ALLEN - 11-5-55
 DESIGNED BY [illegible]
 DRAWN BY [illegible]