

# SEDGWICK COUNTY ENGINEERING DEPARTMENT

## PLAN AND PROFILE OF PROPOSED

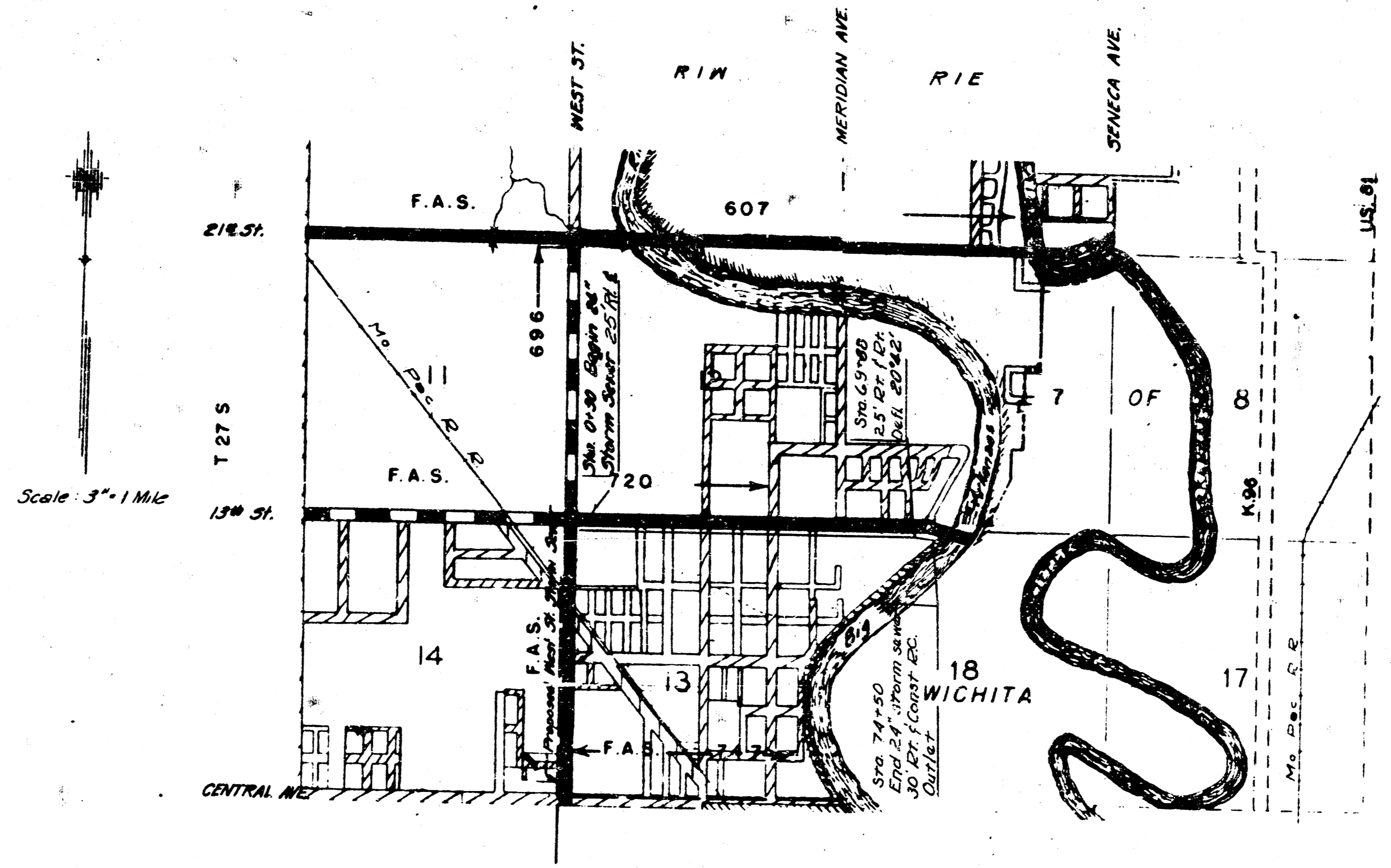
### 13TH. STREET STORM SEWER

DIST. NO.	STATE	PROJ. NO.	SHEET NO.	TOTAL SHEETS
4	KANS.		7	9

INDEX TO SHEETS	
1	Title Sheet
2-3	Plan and Profile
4	Sewer Appurtenances

SUMMARY OF QUANTITIES	
Lay 24" R.C. Pipe	7475 L.F.
Lay 12" " "	156 L.F.
Construct Manholes (14)	156 L.F.
Construct Curb Inlets	84 V.F.
Install 12" R.C. Pipe	8 Ed.
Construct Conc. Outlet	4 Ed.
Install Manhole Steps	7 Ed.
Total Manhole Construction	84 L.F.
Install Concrete Brick Inlet (cast iron grate)	1 Ed.
Drive 12" Piling (4)	80 L.F.

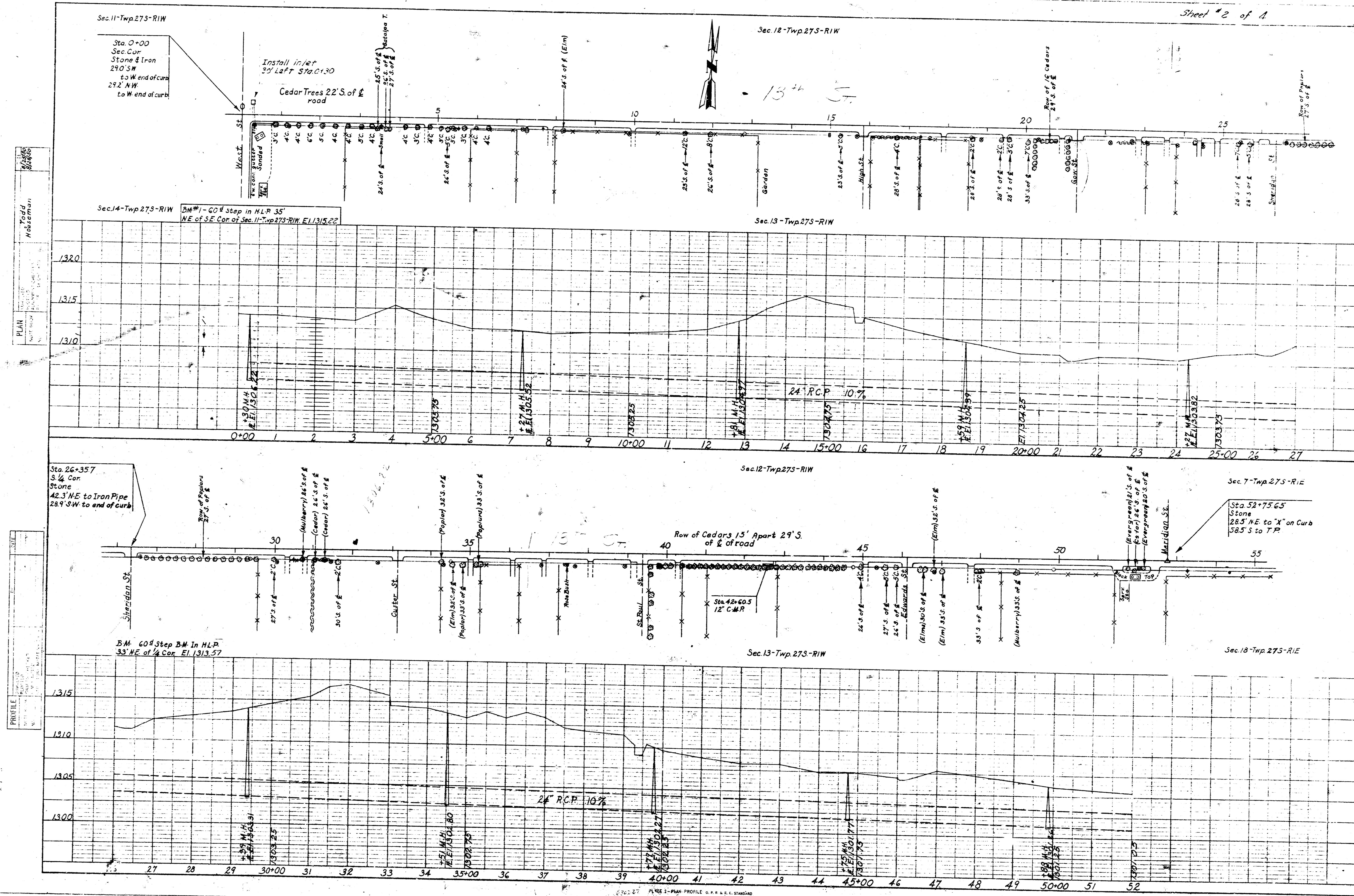
BILL OF MATERIAL	
12" R.C. Pipe	156 L.F.
24" " "	7475 L.F.
Brick	14,380 Ed.
Manhole Covers (14)	980 Lbs.
Manhole Rings (14)	476 Lbs.
Marker	13.6 C.Y.
Concrete in Manhole Bases	12.6 C.Y.
Concrete for Outlet	7.0 C.Y.
Concrete in Inlets	4.0 C.Y.
Reinforcing Steel (Inlets)	133 Lbs.
Reinforcing Steel (Outlet)	397 Lbs.
Curb and Gutter S.H. Plates	950 Lbs.
Total Cast Iron	1750 Lbs.
Total Concrete	372 C.Y.
Total Reinforcing Steel	531 Lbs.
Total Steel Plates	950 Lbs.
Total Steel Steps	287 Lbs.
12" x 20" Treated Timber Piling	80 L.F.



Gross Length of Project	Feet	7475
Exceptions	None	None
Additions	None	None
Net Length of Project	Feet	7475

Oct. 6, 1930  
 July 1, 1930  
 Revised July 1, 1930 M.L.F.

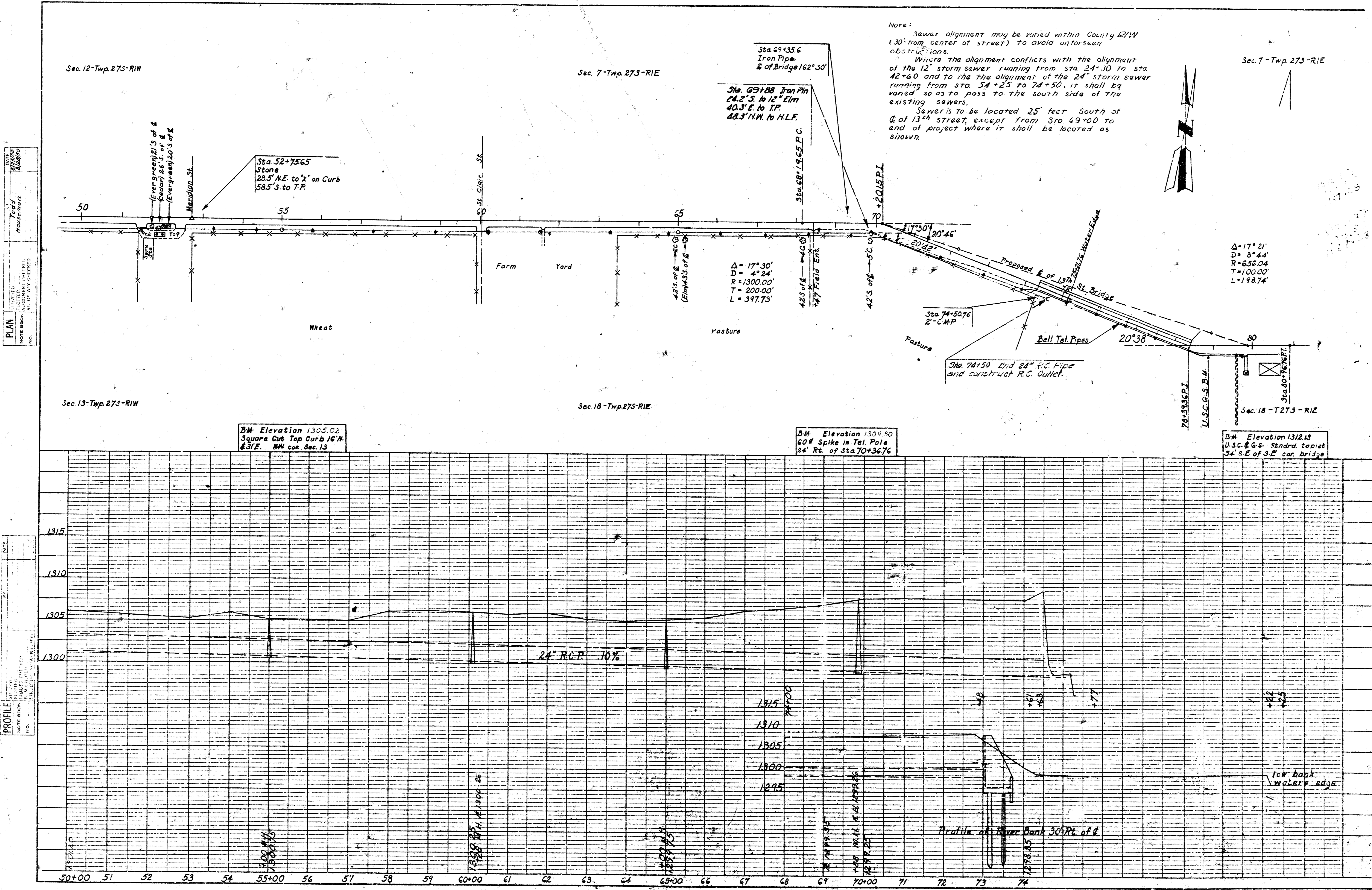
616-24825 4 sheets



PLAN  
 Todd  
 Haseman  
 1/1/86  
 1/1/86

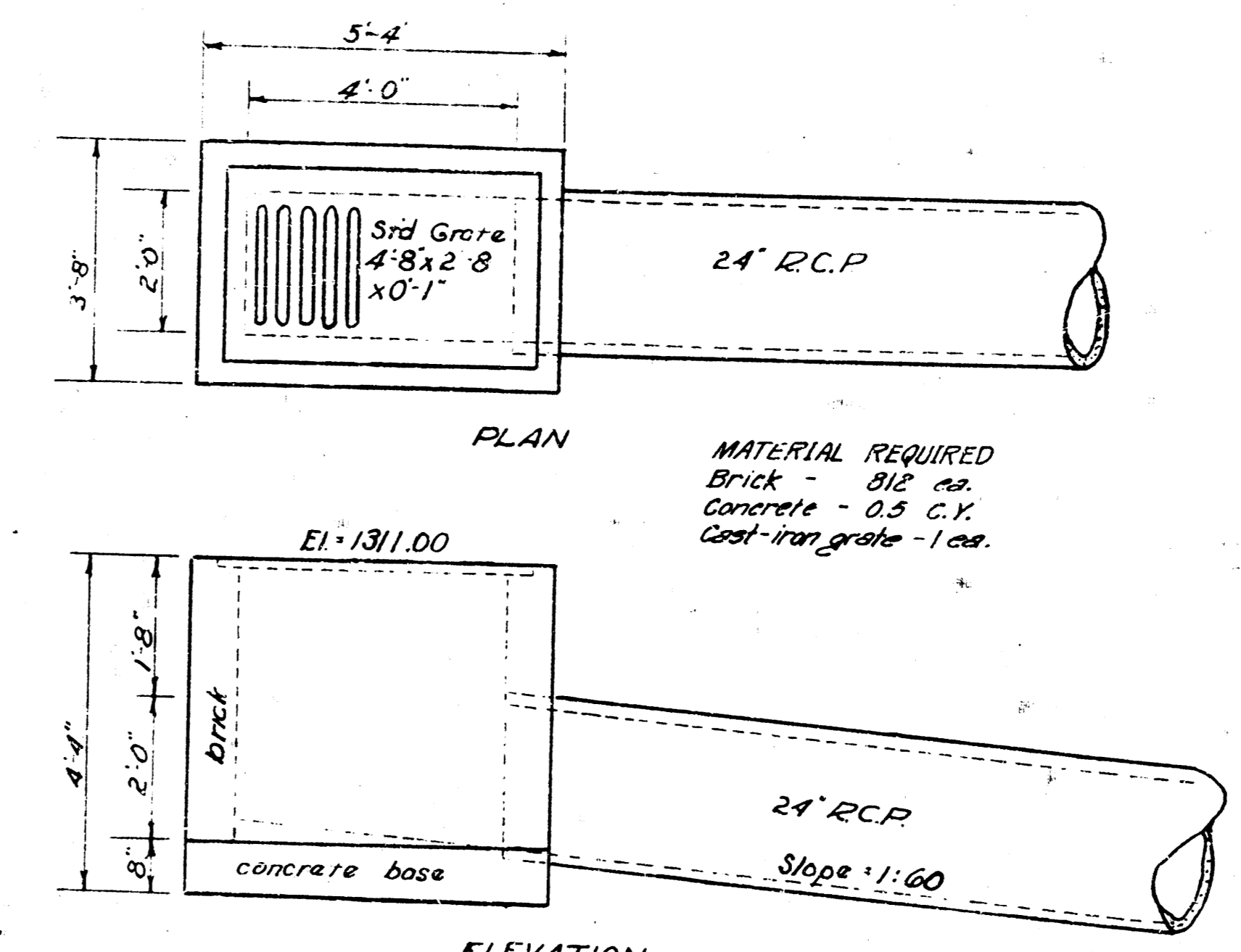
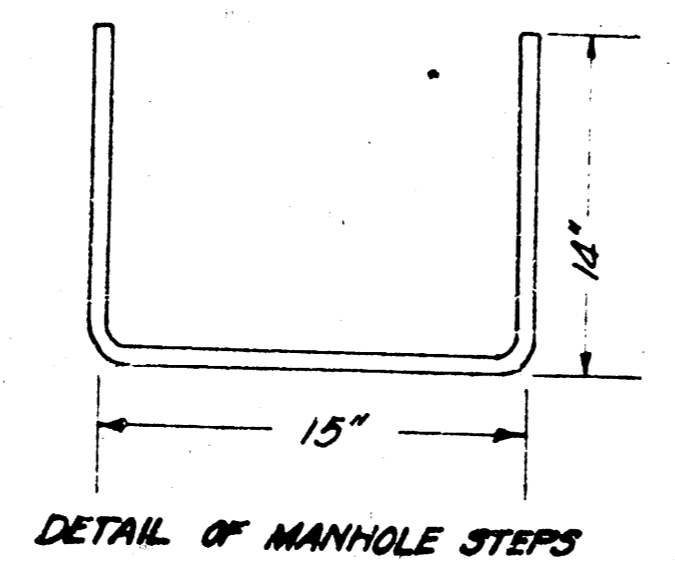
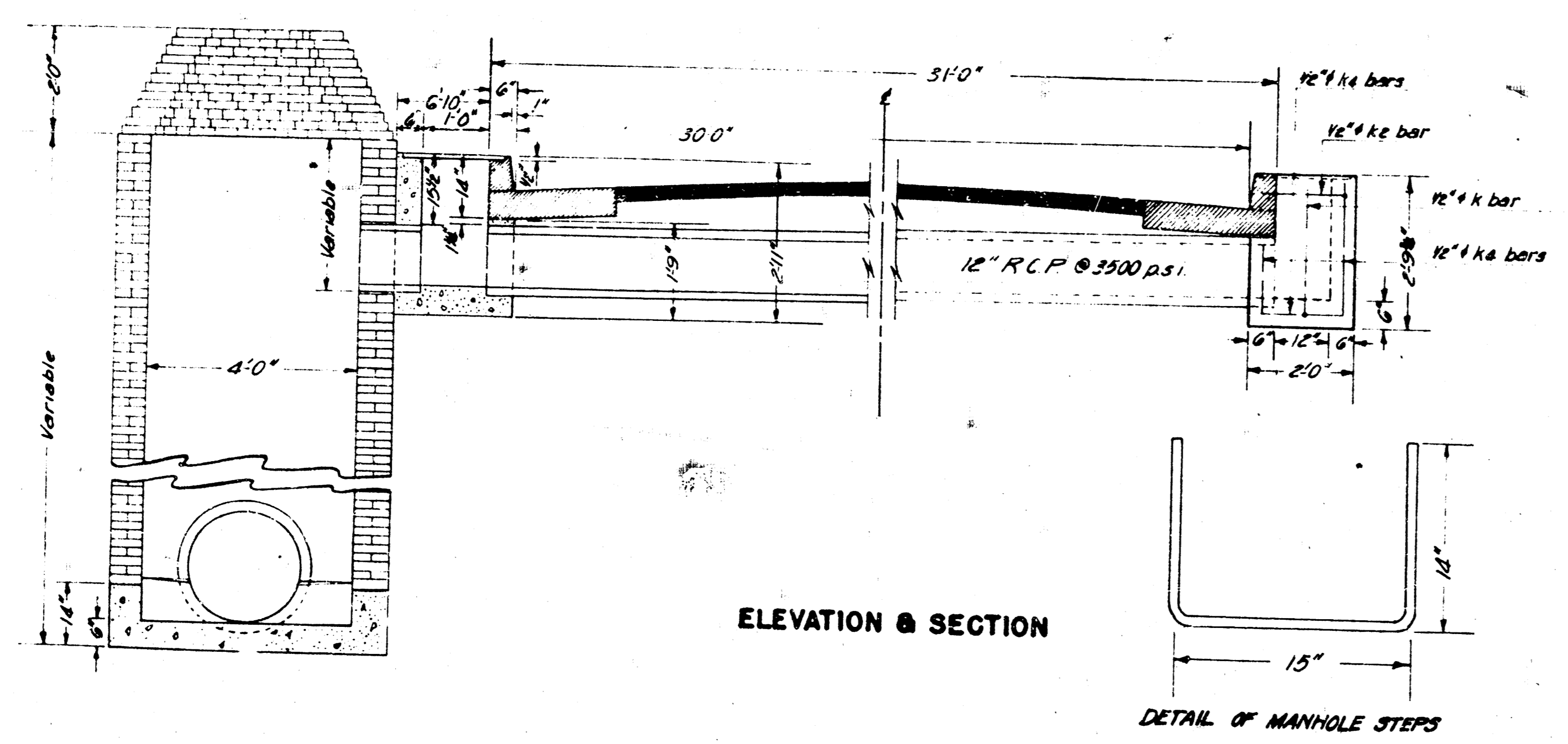
PROFILE  
 Todd  
 Haseman  
 1/1/86  
 1/1/86

616 24825

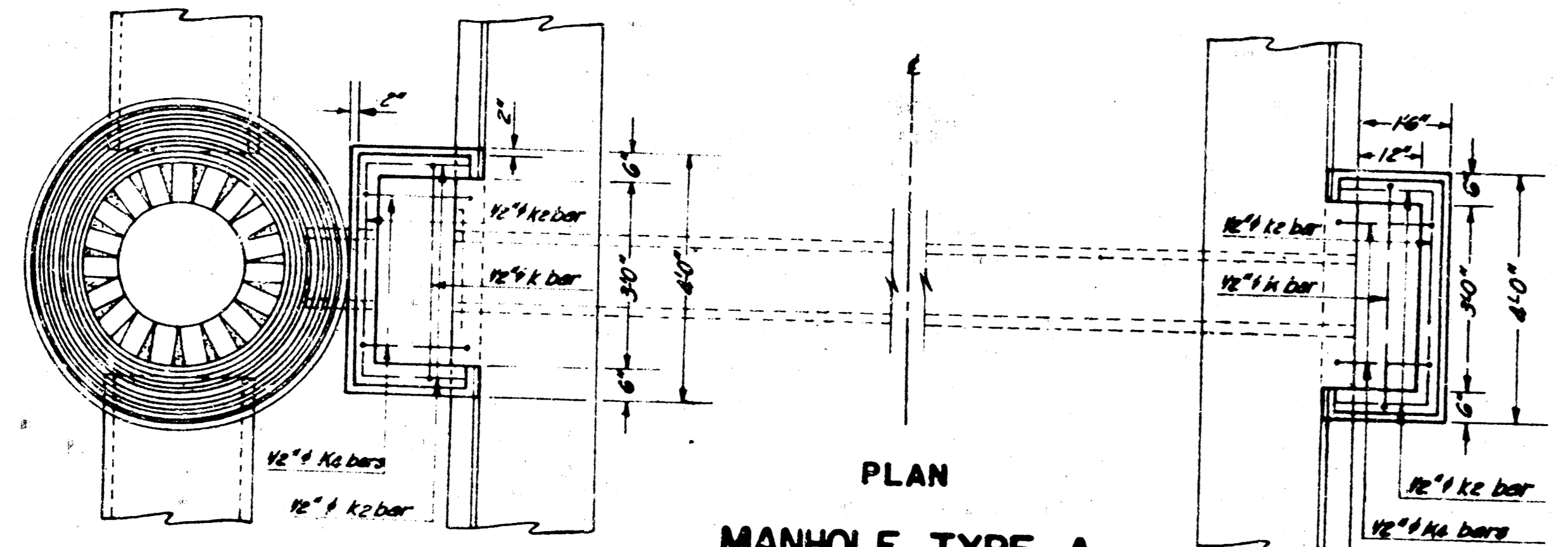


PLAN  
DATE: \_\_\_\_\_  
DRAWN BY: \_\_\_\_\_  
CHECKED BY: \_\_\_\_\_  
NO. \_\_\_\_\_

PROFILE  
DATE: \_\_\_\_\_  
DRAWN BY: \_\_\_\_\_  
CHECKED BY: \_\_\_\_\_  
NO. \_\_\_\_\_



**MATERIAL REQUIRED**  
 Brick - 312 ea.  
 Concrete - 0.5 C.Y.  
 Cast-iron grate - 1 ea.



**Note:** Manhole covers along 13th St. to be Cast Iron Type Filing and Cover @ 100 lbs. Brick openings in all Manholes to be 22" in diameter. 3/4" steel to be used for steps. Spacing between steps to be 15" 53 required.

**BILL OF MATERIAL FOR BASINS**

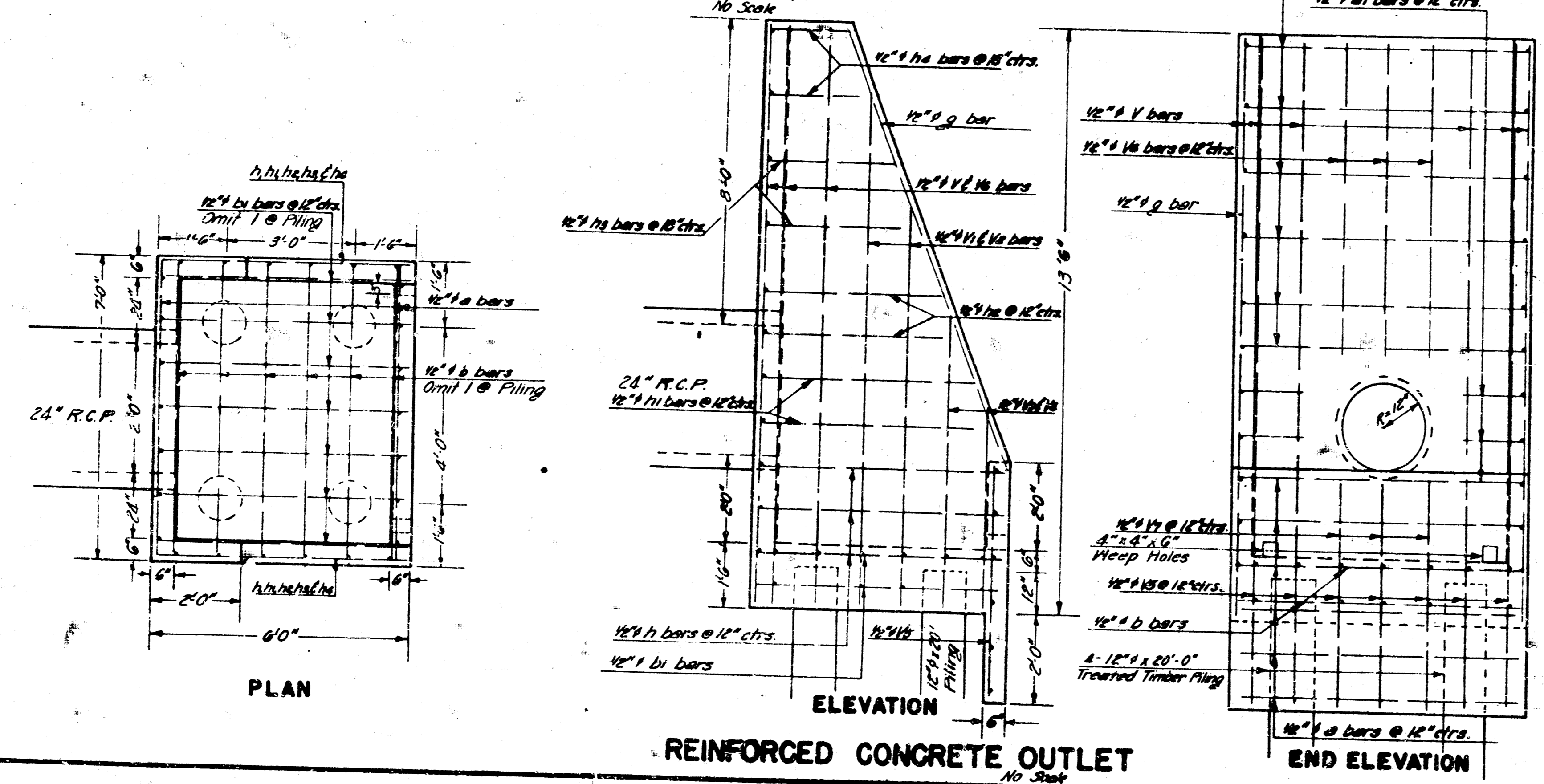
BAR	DIMENSIONS			
	W	X	Y	Z
K	3'-6"	2'-4"	2'-4"	
K1	3'-6"	1'-0"	1'-0"	
K2	3'-6"	1'-0"	1'-0"	
K3	1'-0"	2'-0"	1'-0"	
K4	1'-0"	1'-0"	2'-0"	

BAR	K	K1	K2	K3	K4
NO	0	0	0	16	16
SIZE	12#	12#	6#	12#	12#
LENGTH	2'-4"	7'-4"	2'-0"	3'-0"	3'-0"
TOTAL LBS. RE-STEEL	133				

**GENERAL NOTES**

All concrete to be Class "A". Bevel all exposed edges with a 3/4" triangular mallet. Torque and Groove Reinforced Concrete Pipe @ 3500 p.s.i. to be used thru-out 19" x 24" x 1/2" steel plate covers to be used on curb inlets. 8 required.  
 Manhole Type "A" with Curb Inlets to be constructed 25' ft. of 12th St. @ Sta. 7+27, 24+27, 35+00, and 65+00. Construct Manhole Type "A" existing Curb Inlets and Cross-Road Pipes 25' ft. @ Sta. 0+30, 12+01, 13+59, 29+39, 34+51, 39+79, 44+75, 49+83, 60+20, 69+00.  
 Construct Concrete and Brick Inlet with Grate and Cross-Road Pipe 30' Lt. @ Sta. 0+50. End Reinforced Concrete Pipe and construct Reinforced Concrete Outlet on 12" Timber Piling 30' ft. @ Present 13th St. Bridge @ Sta. 14+50.



**BILL OF MATERIAL FOR CONCRETE OUTLET**

BAR	V	V1	V2	V3	V4	V5	V6	V7	V8
NO	0	2	2	2	7	3	3	3	0
SIZE	12#	12#	12#	12#	12#	12#	12#	12#	12#
LENGTH	2'-4"	7'-4"	2'-0"	2'-0"	3'-0"	3'-0"	3'-0"	3'-0"	3'-0"
TOTAL LBS. RE-STEEL	577								
TOTAL YDS. CLASS "A" CONCRETE	7.0								
TREATED PILING 4" x 12" x 20'	TOTAL 80 L.F.								

**SEWER APPURTENANCES**

PREPARED BY  
**JEDGWICK COUNTY ENGINEERING DEPT.**  
**RUFUS S. KIRK** COUNTY ENGINEER

REVISED	SCALE	DESIGNED	TRACED	CHECKED	SHEET NO.
July 23, 1934 R.S.F.	Noted		PRELIM		4
Sept. 5-50 W.J.F.			4-64-20		
			TOTAL SHEETS		