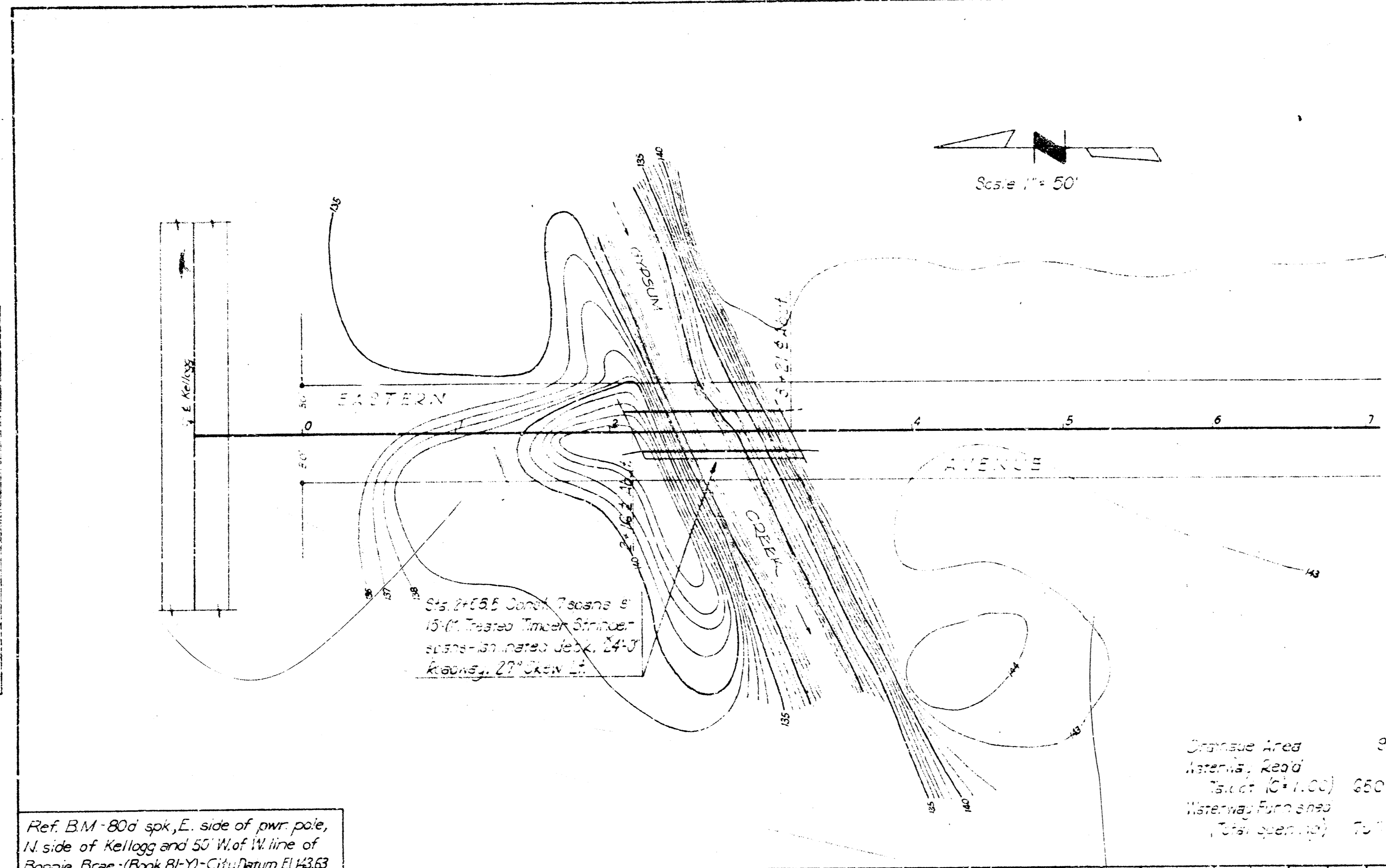


PLAN  
 SHEET NO. 1  
 DATE



Station	1	2	3	4	5	6	7
1st Pier	1.32'	1.58'	1.23'	1.37'	1.44'	1.44'	1.38'
2nd Pier	1.31'	1.55'	1.58'	1.33'	1.40'	1.45'	1.32'
3rd Pier	1.32'	1.33'	1.28'	1.38'	1.41'	1.37'	1.33'
4th Pier	1.32'	1.37'	1.29'	1.43'	1.40'	1.37'	1.35'
5th Pier	1.25'	1.37'	1.29'	1.43'	1.40'	1.37'	1.35'
6th Pier	1.25'	1.37'	1.29'	1.43'	1.40'	1.37'	1.35'
7th Pier	1.25'	1.37'	1.29'	1.43'	1.40'	1.37'	1.35'

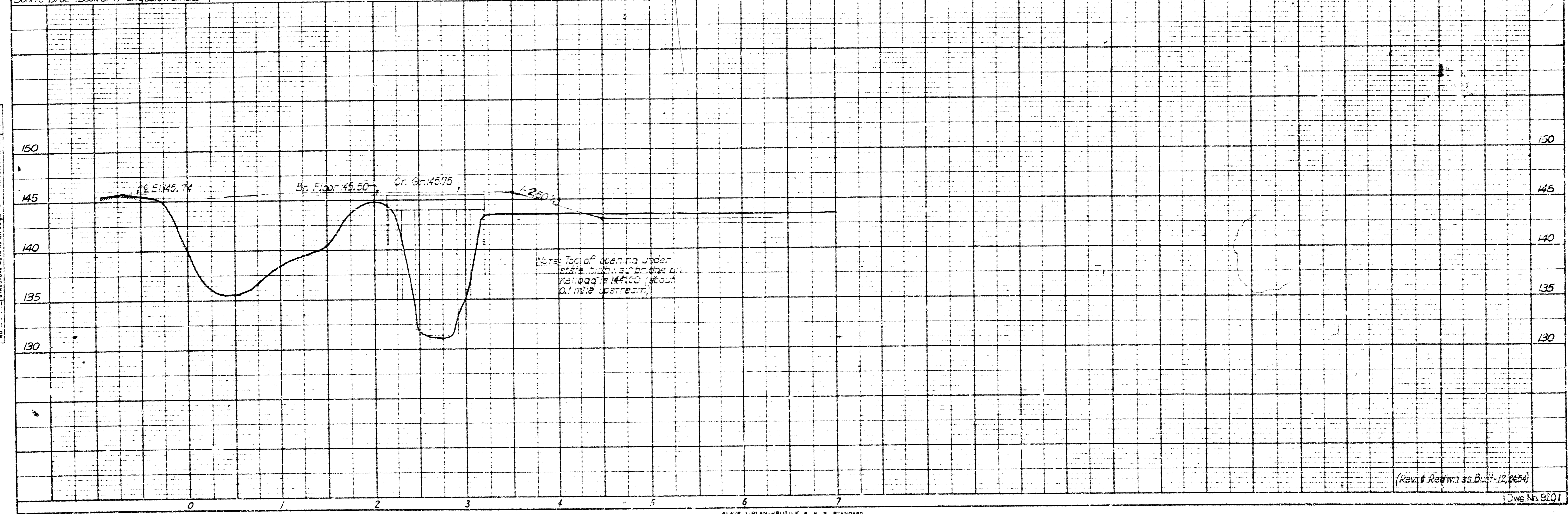
PILE LENGTHS AS DRIVEN

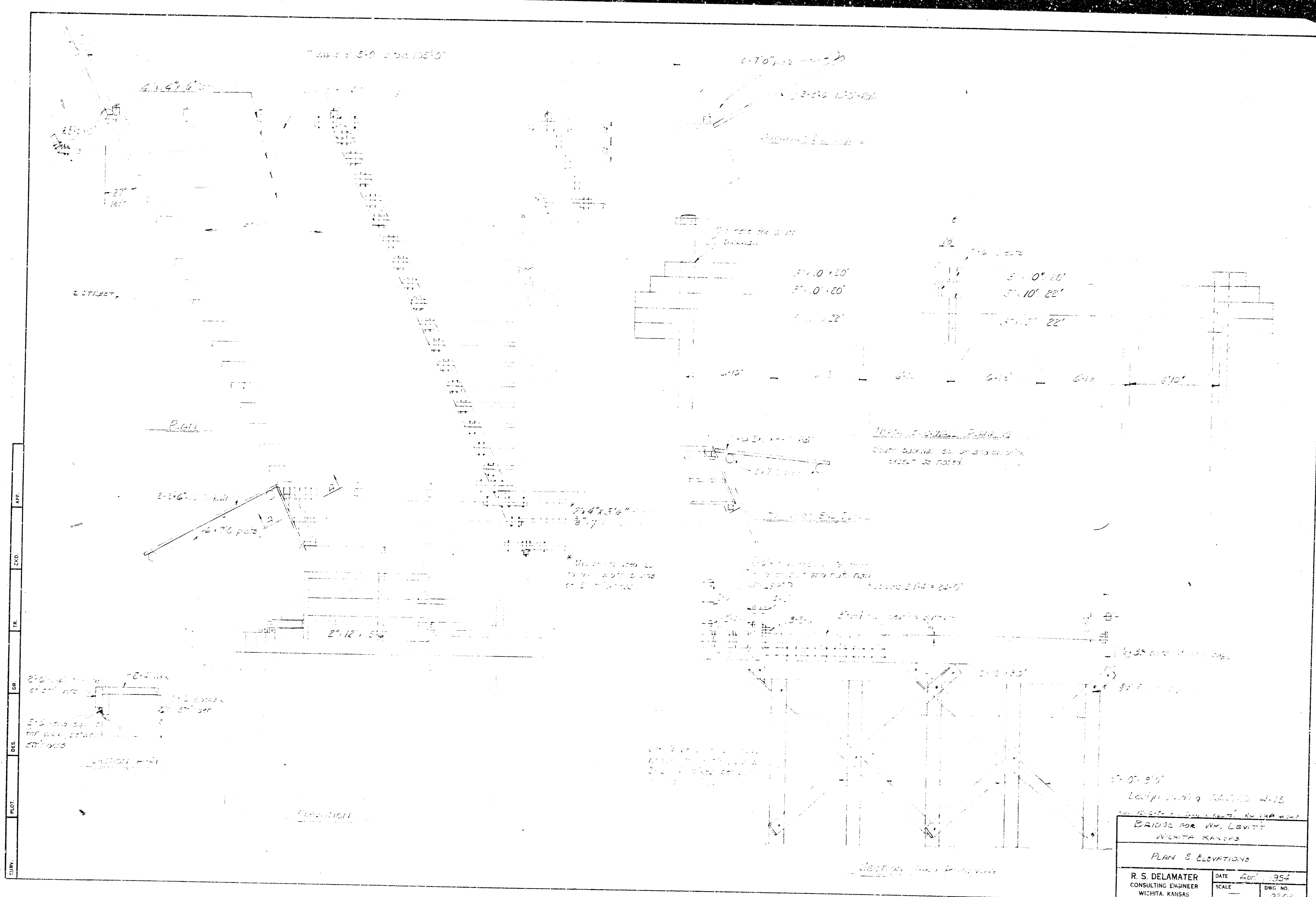
BRIDGE FOR WM. LEVITT  
 WICHITA, KANSAS  
 CONTOUR MAP & PROFILE

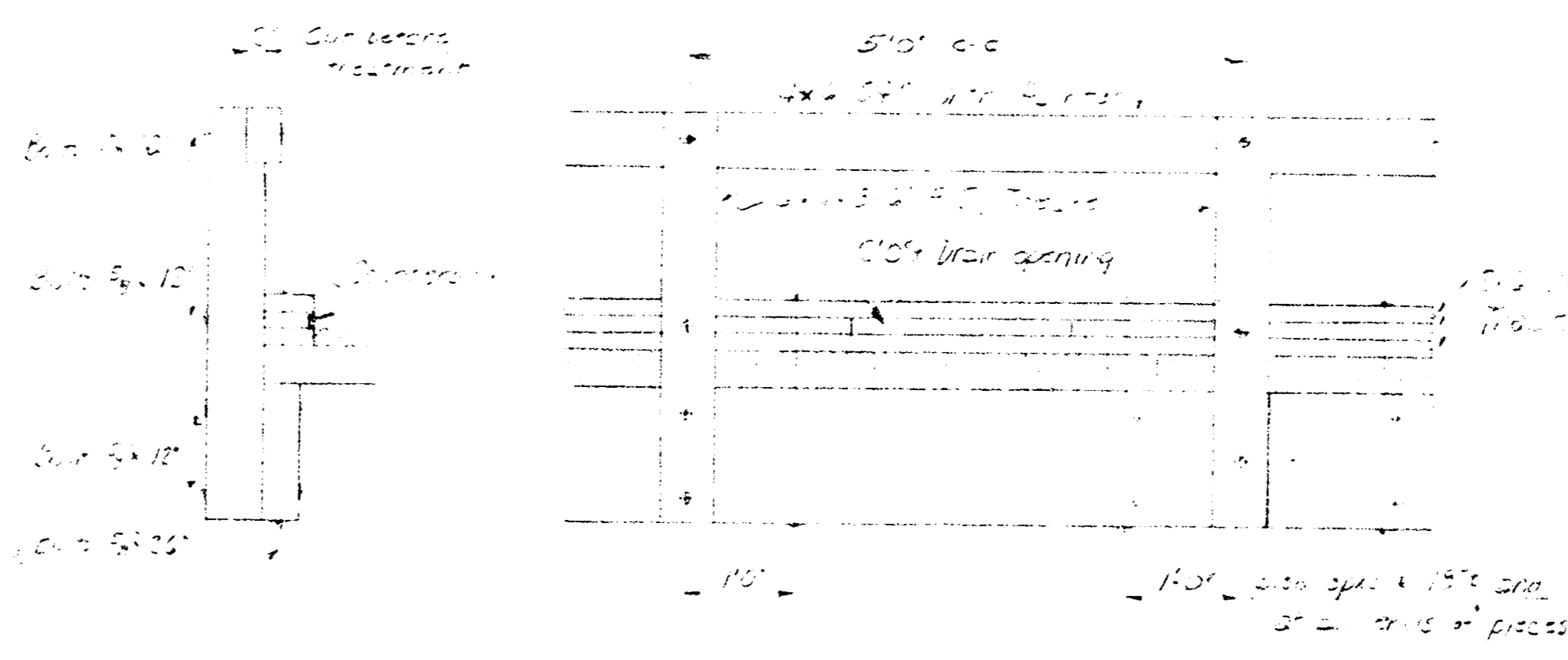
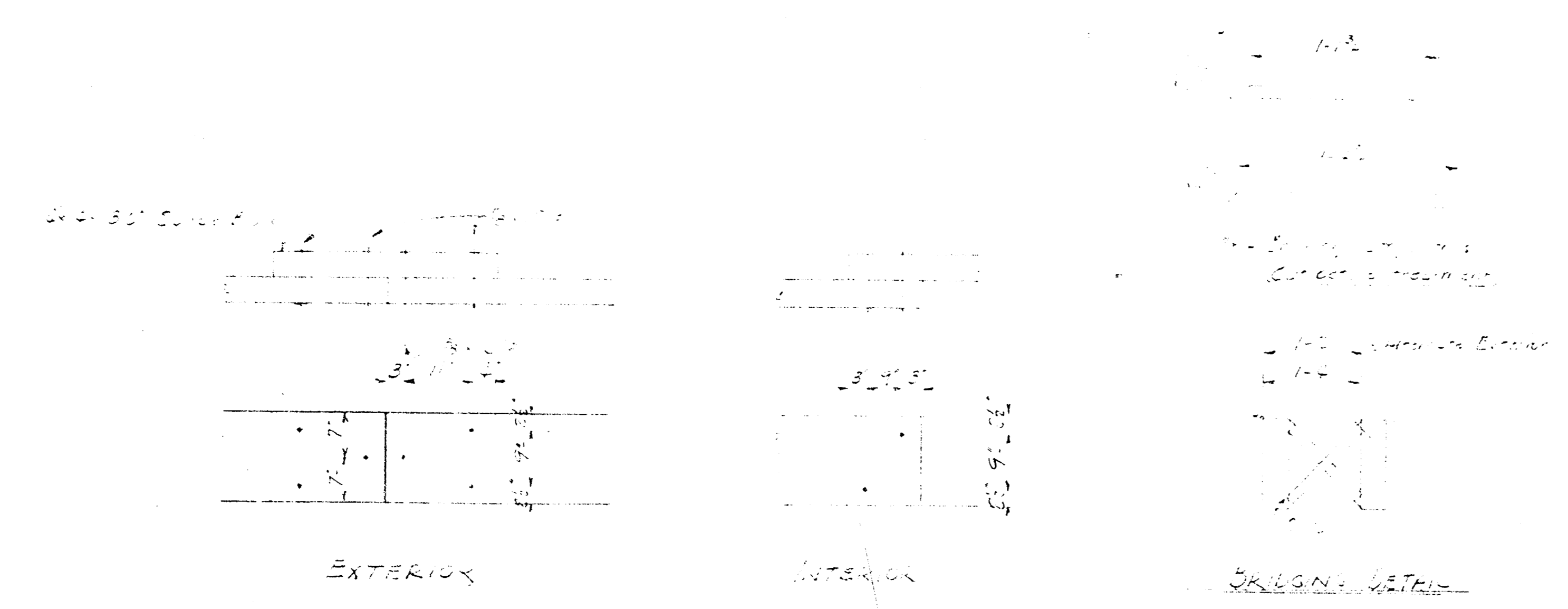
C. B. DELAMATER  
 CONSULTING ENGINEER  
 WICHITA, KANSAS  
 (CONSTRUCTED - DECEMBER, 1954)

Original Area 2 sq. ft.  
 Water Area 280 sq. ft.  
 Waterway 70 sq. ft.

PROFILE  
 SHEET NO. 2  
 DATE



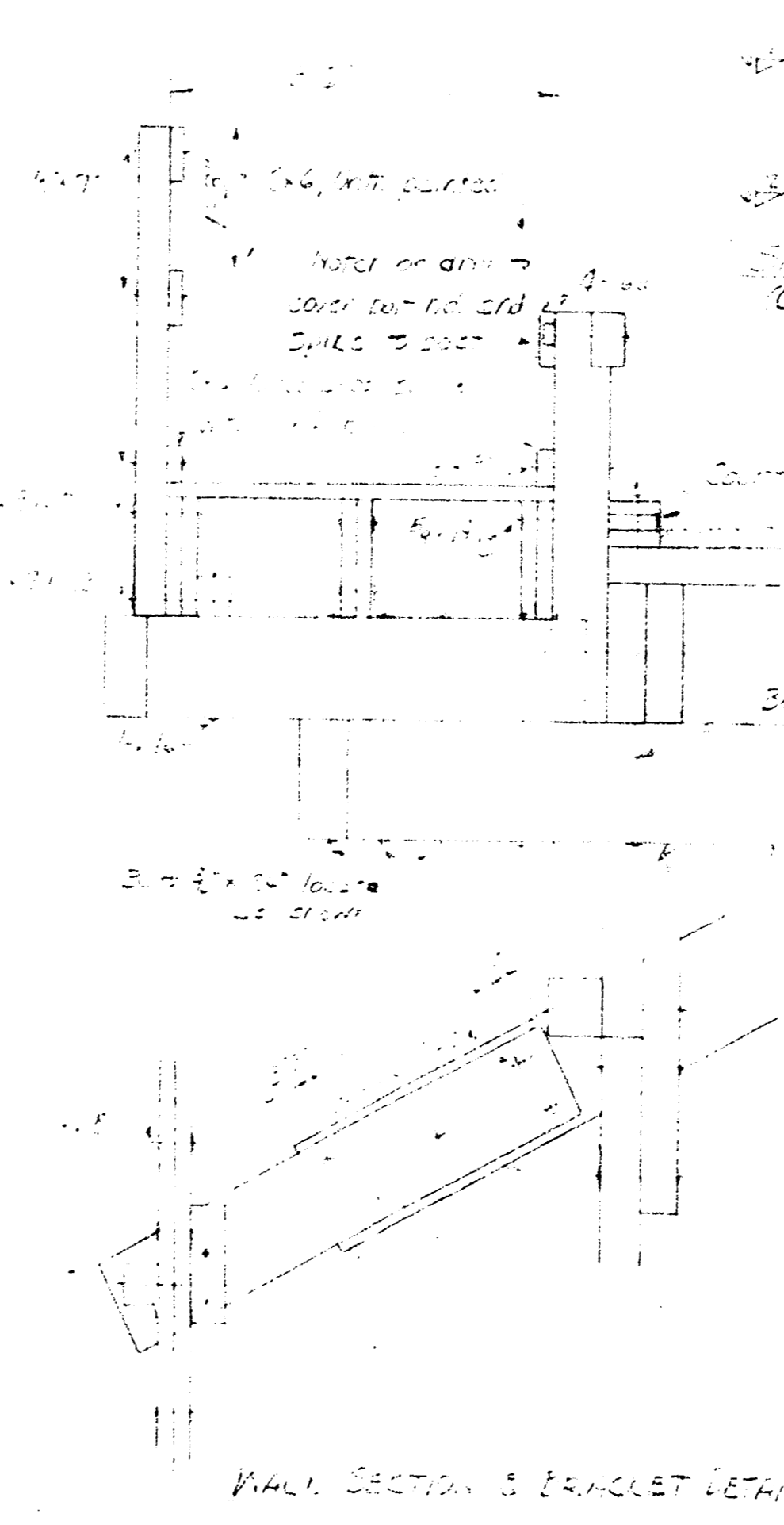




Guardrail Splice  
 Splice to next beam  
 Splice to next beam

Use 2x4 boards, 20' long with 20d nails to attach to stringers, staggered with board to board. Nail boards to water table every 18" and staggered board to board.

ITEM	QTY	DIMENSIONS		REMARKS	UNIT	PRICE	TOTAL
		SIZE	FOOT FEET				
Deck	10	12' x 12' 6"	1440	2x12 S&P	SQ. FT.	1.20	129.60
Stringer	10	12' x 12' 6"	1440	2x12 S&P	SQ. FT.	1.20	129.60
Substructure	10	12' x 12' 6"	1440	2x12 S&P	SQ. FT.	1.20	129.60
Handrail	10	12' x 12' 6"	1440	2x12 S&P	SQ. FT.	1.20	129.60
Foot	10	12' x 12' 6"	1440	2x12 S&P	SQ. FT.	1.20	129.60



Use 2x4 boards, 20' long with 20d nails to attach to stringers, staggered with board to board. Nail boards to water table every 18" and staggered board to board.

Use 2x4 boards, 20' long with 20d nails to attach to stringers, staggered with board to board. Nail boards to water table every 18" and staggered board to board.

Summary of Quantities

2x12 S&P	1440
2x12 S&P	1440
2x12 S&P	1440
2x12 S&P	1440
2x12 S&P	1440

BRIDGE FOR MR. LEVITT  
 WICHITA, KANSAS

MISCELLANEOUS DETAILS

R. S. DELAMATER  
 CONSULTING ENGINEER  
 WICHITA, KANSAS

DATE: APRIL, 1954  
 SCALE: 3/4" = 1'-0"  
 DWG. NO.: 9203