

CONSTRUCTION PLANS FOR DRAINAGE SYSTEM IMPROVEMENTS TO SERVE MISSION — CENTRAL TO ROCKWOOD THE CITY OF WICHITA,

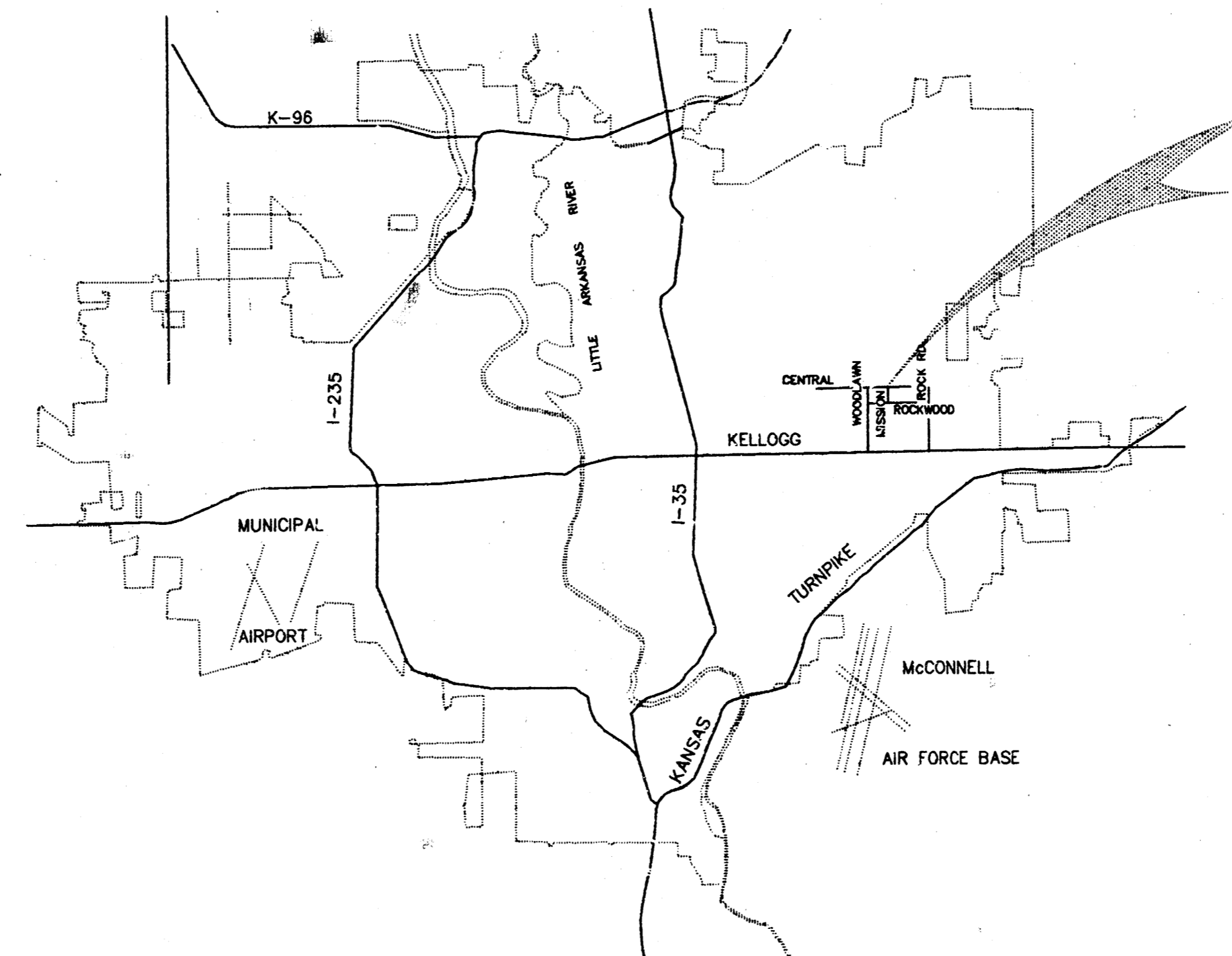
SEDGWICK COUNTY, KANSAS
MICHAEL E. LINDEBAK, P.E.-CITY ENGINEER

SYMBOL LEGEND

- | | |
|-----------------------------|-----------------------|
| ○ ^{WM} WATER METER | ⊗ TREE |
| ○ ^{GM} GAS METER | — W — WATER LINE |
| ○ ^{WV} WATER VALVE | — G — GAS LINE |
| ▲ POWER POLE | — SS — SANITARY SEWER |
| ◆ FIRE HYDRANT | — E — ELECTRIC |
| | — GS — GAS SERVICE |

BENCH MARKS

- B.M. NORTH BOLT OF FIRE HYDRANT, NORTHEAST SIDE OF ROCKWOOD AND MISSION INTERSECTION.
ELEVATION 176.85
- B.M. CHISELED SQUARE ON SIDEWALK SOUTHWEST CORNER OF CENTRAL AND MISSION.
ELEVATION 180.26
- B.M. CHISELED SQUARE ON NORTHWEST CURB AT 355 MISSION.
ELEVATION 177.07



DRAWING INDEX

- | SHEET | TITLE |
|-------|---|
| 1. | MAP AND INDEX |
| 2. | PLAN & PROFILE MISSION, ROCKWOOD TO CENTRAL AVENUE STA. 9+99 TO STA. 12+46.55 AND GENERAL NOTES |
| 3. | PLAN & PROFILE MISSION, ROCKWOOD TO CENTRAL AVENUE FROM STA. 12+46.55 TO STA. 22+34.12 |
| 4. | DETAIL STANDARD TYPE I CURB INLET (6" :: 5'-0") |
| 5. | STANDARD SHALLOW MANHOLES |

PHASE III

INDEX CODE - 133108

CITY OF WICHITA PROJECT NO. 468 - 82369

APRIL, 1994

PLANS PREPARED BY

CASTLE & ASSOCIATES

WICHITA, KANSAS



CITY OF WICHITA DRAINAGE IMPROVEMENTS			
MAP AND INDEX			
CASTLE & ASSOCIATES ENGINEERS WICHITA, KANSAS	DSG	DWG FILE NO.	
	DR	9324F - D - 70,015	
DATE	APRIL	1994	APP
			SHEET NO 1 OF 5
			REV.

AutoCAD Drawing File Name 9324E-1.DWG
 Archive Computer Disk # AC-DWG-22
 Plot Scale 1=300

AutoCAD Drawing File Name 9234-3.DWG
 Archive Computer Disk # AC-DWG-19
 Plot Scale 1"=20'

GENERAL NOTES

1. CONTRACTOR WILL BE REQUIRED TO PROVIDE A MINIMUM ADVANCE NOTICE OF TWENTY-FOUR (24) HOURS TO UTILITY COMPANIES PRIOR TO STARTING ANY EXCAVATION AS FOLLOWS:

THE CONTRACTOR MUST NOTIFY THE FOLLOWING IN CASE OF AN EMERGENCY:

- CABLEVISION 316-262-4270 OR 263-2061
- ARKLA GAS 316-942-8350 OR 263-8161
- CITY OF WICHITA
 WATER 316-268-4908
 SANITARY & STORM SEWER 316-268-4210
- KANSAS ONE-CALL 1-800-344-7233 OR 687-2470
- KG&E, THE ELECTRIC CO. 316-264-1141
- KG&E GAS SERVICE 316-263-7511
- SOUTHWESTERN BELL TELEPHONE 1-571-2611

2. THE CONTRACTOR SHALL NOTIFY PIPELINE COMPANIES AT LEAST 24 HOURS IN ADVANCE OF ANY WORK BEING PERFORMED ACROSS AND/OR ADJACENT TO PIPELINES.

3. INTERURBAN TRAFFIC GENERATED OUTSIDE THE PROJECT AREA IS NOT TO BE CARRIED THROUGH CONSTRUCTION. LOCAL BUSINESS OR APARTMENT TRAFFIC GENERATED WITHIN THE PROJECT AREA IS TO BE CARRIED THROUGH CONSTRUCTION AS FURTHER PROMULGATED BY PROJECT SPECIAL PROVISIONS.

4. UNDERGROUND UTILITY SERVICE LINES AND OVERHEAD UTILITY POLE LINES ARE TO BE ADJUSTED AS NECESSARY BY OTHERS PRIOR TO CONSTRUCTION UNLESS THE PLANS SPECIFICALLY CALL FOR THEIR ADJUSTMENT BY THE CONTRACTOR OR UNLESS THE PLANS SPECIFICALLY IDENTIFY A UTILITY TO BE ADJUSTED BY ITS OWNER DURING CONSTRUCTION. EXISTING UTILITIES AND THEIR LOCATION, AS SHOWN ON THE PLANS, REPRESENT THE BEST INFORMATION OBTAINABLE FOR DESIGN. LOCATION INFORMATION HAS BEEN OBTAINED FROM THE VARIOUS UTILITY COMPANIES AND IS EITHER FROM COMPANY RECORD DRAWINGS OR COMPANY PROVIDED FIELD LOCATIONS. THE CONTRACTOR WILL BE REQUIRED TO WORK AROUND EXISTING UTILITIES WITHIN THE RIGHT-OF-WAY WHICH DO NOT CONFLICT WITH PROPOSED CONSTRUCTION.

5. A SAW CUT OF AT LEAST ONE-HALF THE DEPTH OF EXISTING SURFACE COURSES OR ONE-FOURTH THE DEPTH OF THE EXISTING TOTAL PAVEMENT THICKNESS SHALL BE PROVIDED AT LOCATIONS WHERE PROPOSED CONSTRUCTION ABUTS AN EXISTING SURFACE COURSE OR PAVEMENT FOR WHICH PARTIAL REMOVAL OF THAT SURFACE COURSE OR PAVEMENT IS REQUIRED, EXCEPT WHEN SAW CUTS ARE WITHIN THREE (3) FEET OF AN EXISTING JOINT THE REMOVAL SHALL BE EXTENDED TO THE EXISTING JOINT. SUCH SAW CUTS WILL NOT BE PAID FOR DIRECTLY AND THIS COST SHALL BE CONSIDERED AS SUBSIDIARY TO THE REMOVAL OF THE SURFACE OR PAVEMENT.

CURB AND GUTTER REMOVAL FOR INLETS SHALL BE SAWS AT A MINIMUM OF TWO (2) FEET SIX (6) INCHES FROM THE BACK OF CURB AND PARALLEL WITH IT AND A MINIMUM OF FOUR (4) FEET, SIX (6) INCHES TO THE LEFT AND RIGHT DIRECTIONS FROM THE CENTER LINE OF THE INLET PERPENDICULAR TO THE BACK OF CURB.

6. RUBBLE FROM THE REMOVAL OF MISCELLANEOUS STRUCTURES AND EXCESS EXCAVATION WHICH IS TO BE WASTED SHALL BE DISPOSED OF ON SITES TO BE PROVIDED BY THE CONTRACTOR. THESE SITES SHALL BE APPROVED BY THE ENGINEER AS TO SUITABILITY, APPEARANCE AND SITE LOCATION. LOCATIONS THAT, IN THE OPINION OF THE ENGINEER, WILL LEAVE AN UNSIGHTLY APPEARANCE WILL NOT BE APPROVED.

ALL DISPOSAL SITES MUST BE APPROVED BY THE KANSAS DEPARTMENT OF HEALTH AND ENVIRONMENT. MATERIAL EITHER STOCKPILED OR DISPOSED OF IN A FLOOD PLAIN WOULD REQUIRE A KANSAS STATE BOARD OF AGRICULTURE PERMIT. ANY MATERIAL DUMPED IN WATERS OF THE UNITED STATES OR WETLANDS IS SUBJECT TO U.S. CORPS. OF ENGINEERS PERMITTING REGULATIONS. ANY MATERIAL BURIED OR STOCKPILED BEYOND APPROVED CONSTRUCTION LIMITS WOULD REQUIRE ADDITIONAL ARCHAEOLOGICAL INVESTIGATIONS UNLESS BURIED IN A PREVIOUSLY APPROVED BORROW LOCATION.

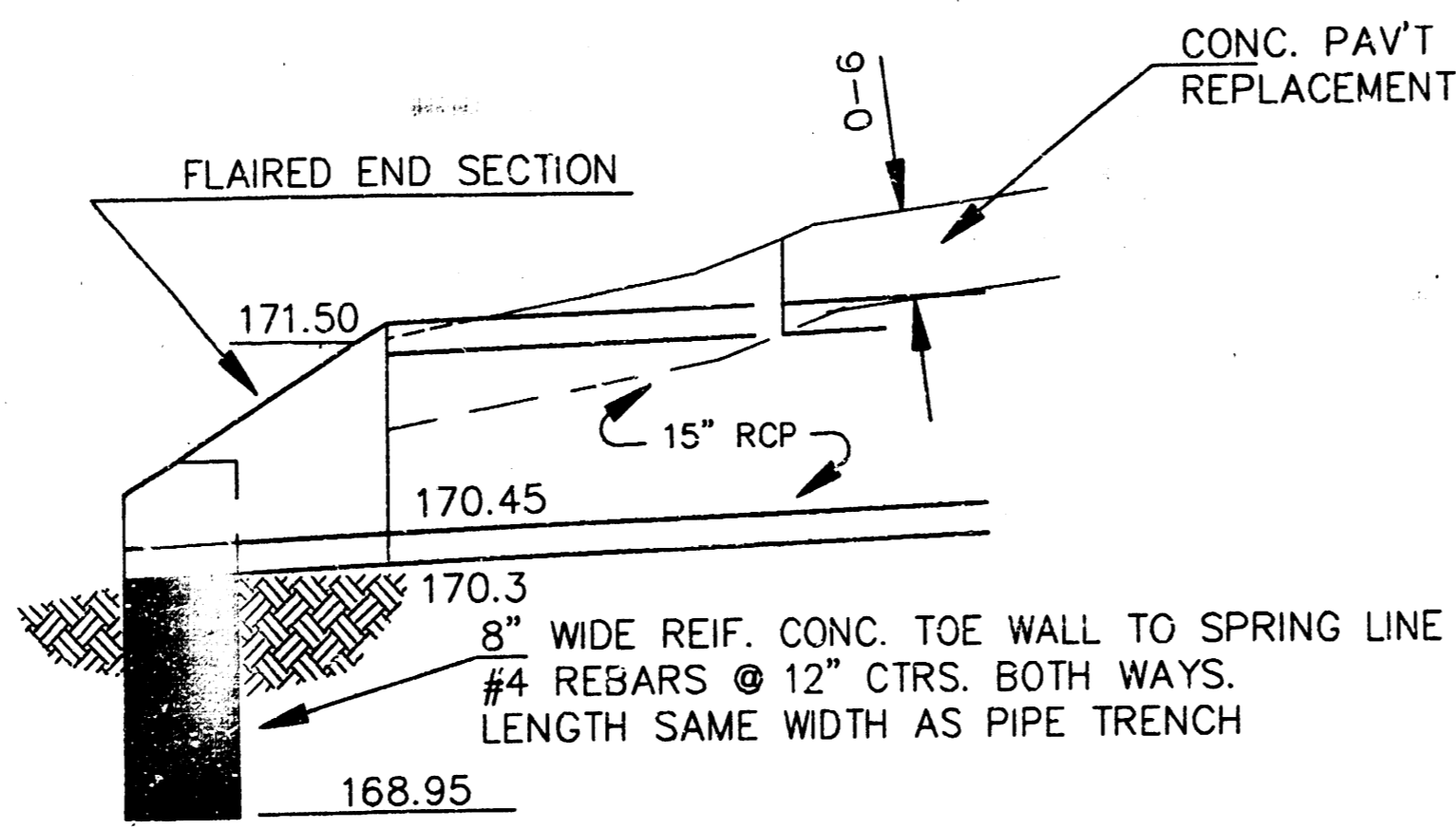
7. THE ENGINEER SHALL TAKE FIELD TIES TO ALL QUARTER SECTION CORNERS. THE CONTRACTOR SHALL SET A CITY SURVEY MONUMENT IN THE REQUIRED LOCATION WHERE SUCH QUARTER SECTION CORNERS FALL WITHIN THE LIMITS OF PAVEMENT CONSTRUCTION. SURVEY MONUMENTS WILL BE FURNISHED BY THE CITY. THE ENGINEER WILL ACCURATELY LOCATE AND INSTALL THE IRON AT THE QUARTER SECTION CORNER. THIS WORK WILL NOT BE PAID FOR DIRECTLY, BUT SHALL BE CONSIDERED SUBSIDIARY TO THE OTHER PAY ITEMS OF WORK IN THE CONTRACT.

8. PROPERTIES WITHIN THE PROJECT LIMITS MAY BE UNDERGROUND SPRINKLER SYSTEMS IN PUBLIC RIGHT-OF-WAY WHICH CONFLICT WITH NEW CONSTRUCTION. CONTRACTOR WILL BE REQUIRED TO REMOVE SUCH IMPROVEMENTS SHOULD THEY NOT BE REMOVED BY THEIR OWNER AT THE TIME OF CONSTRUCTION OF THE PROJECT. THE CONTRACTOR WILL BE REQUIRED TO SALVAGE ALL SPRINKLER HEADS AND/OR VALVES AND GIVE SUCH MATERIAL TO THEIR OWNER. PORTIONS OF UNDERGROUND SPRINKLER SYSTEMS NOT IN CONFLICT WITH NEW CONSTRUCTION SHALL BE PROTECTED FROM DAMAGE AND SHALL REMAIN IN PLACE. ALL WORK IN CONNECTION WITH UNDERGROUND SPRINKLER SYSTEMS SHALL BE CONSIDERED AS SUBSIDIARY TO THE CONTRACT PAY ITEMS OF WORK.

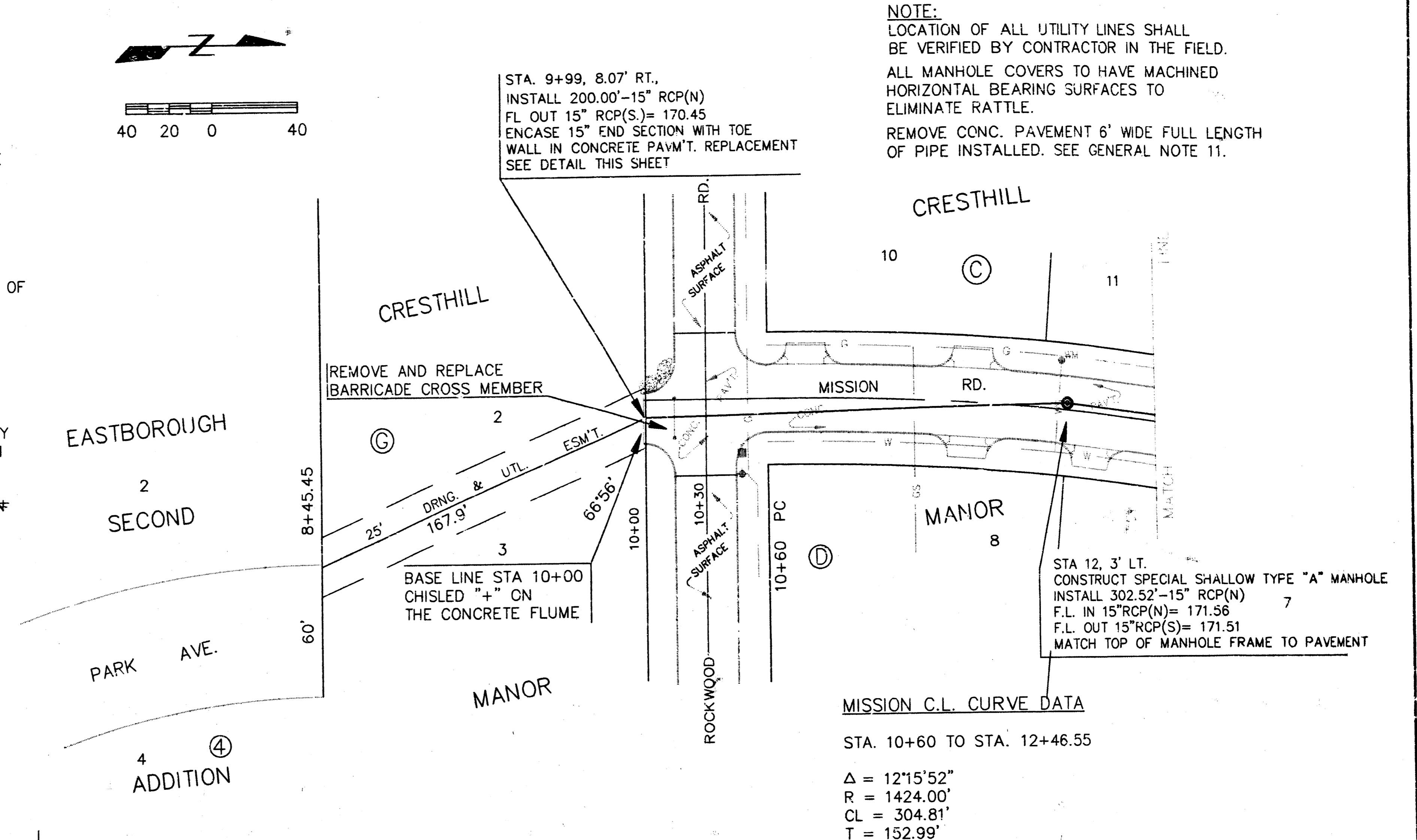
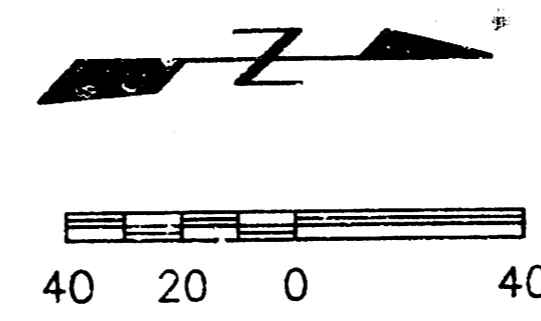
9. THE CONTRACTOR SHALL GIVE ALL PROPERTY OWNERS AND/OR TENANTS OF DEVELOPED PROPERTY DIRECTLY ABUTTING THE CONSTRUCTION OF THIS PROJECT A MINIMUM OF TEN (10) DAYS ADVANCE NOTICE PRIOR TO START OF CONSTRUCTION.

10. THE CONTRACTOR SHALL BE RESPONSIBLE FOR PRESERVING PROPERTY IRONS. THE CONTRACTOR WILL BE REQUIRED TO RE-ESTABLISH ANY PROPERTY IRONS WHICH ARE DAMAGED OR DESTROYED BY HIS CONSTRUCTION OPERATIONS. SUCH IRONS SHALL BE RE-ESTABLISHED BY A LICENSED LAND SURVEYOR OR A LICENSED PROFESSIONAL ENGINEER IN ACCORDANCE WITH STATE LAWS.

11. ALL COSTS FOR REMOVAL OF EXISTING PAVEMENT SHALL BE INCLUDED IN THE LUMP SUM PRICE BID FOR CLEARING RIGHT-OF-WAY AND SITE PREPARATION. ALL COSTS FOR REPLACEMENT OF EXISTING PAVEMENT SHALL BE INCLUDED IN THE LUMP SUM PRICE BID FOR SITE RESTORATION. REMOVAL OF EXISTING PAVEMENT AND/OR REPLACEMENT OF EXISTING PAVEMENT SHALL CONFORM TO THE APPLICABLE SECTIONS OF THE CITY OF WICHITA STANDARD SPECIFICATIONS. MINIMUM LIMITS OF SUCH PAVEMENT REMOVAL AND REPLACEMENT SHALL BE ONE FOOT BEYOND THE LIMITS OF THE EXCAVATION MADE FOR THE SEWER OR THE STRUCTURE, EXCEPT WHEN SUCH LINES OF REMOVAL ARE WITHIN THREE (3) FEET OF AN EXISTING JOINT THE LIMITS OF REMOVAL SHALL BE EXTENDED TO THE EXISTING JOINT.

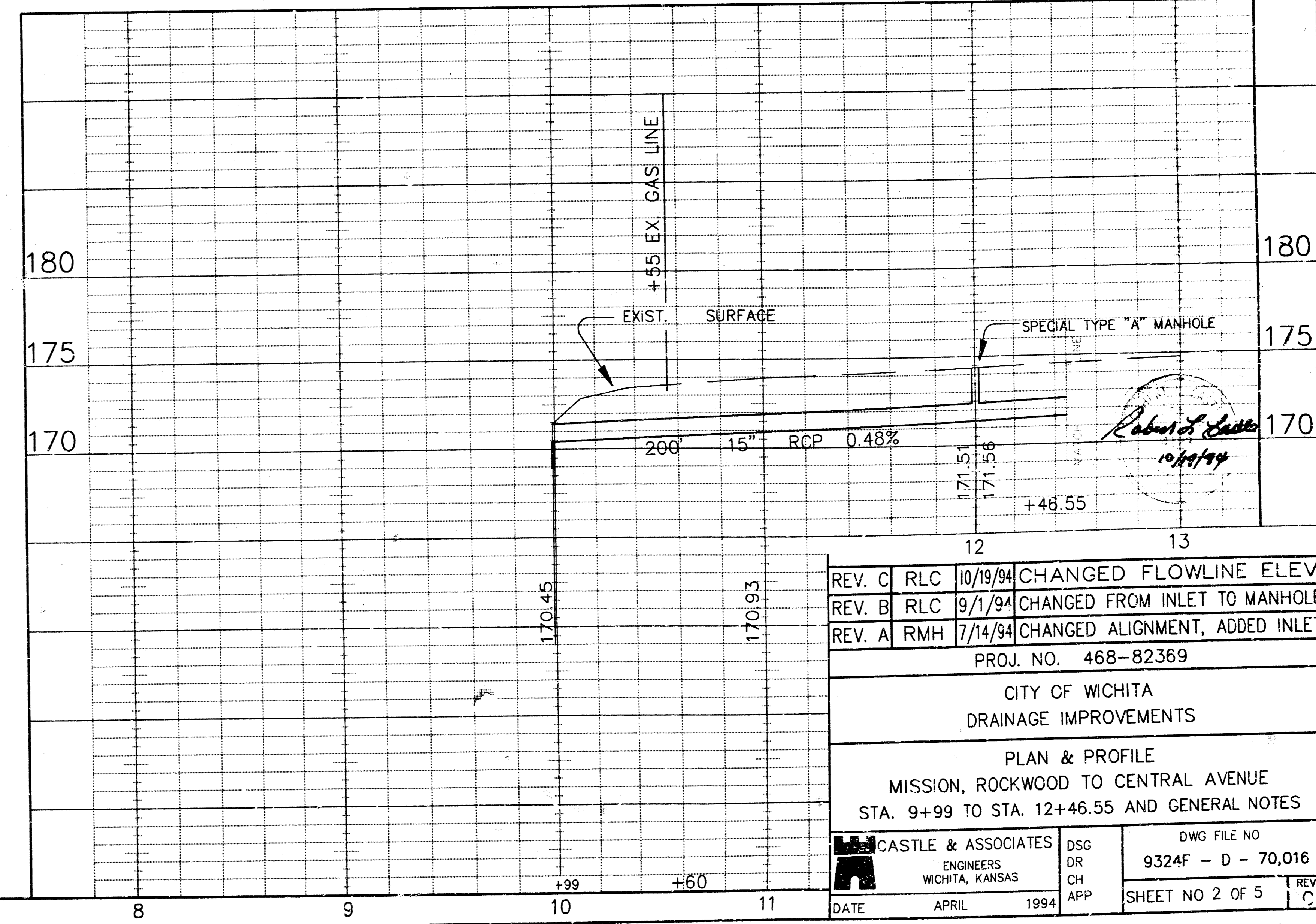


FLAIRED END SECTION DETAILS
 @ STA. 9+95
 N.T.S.



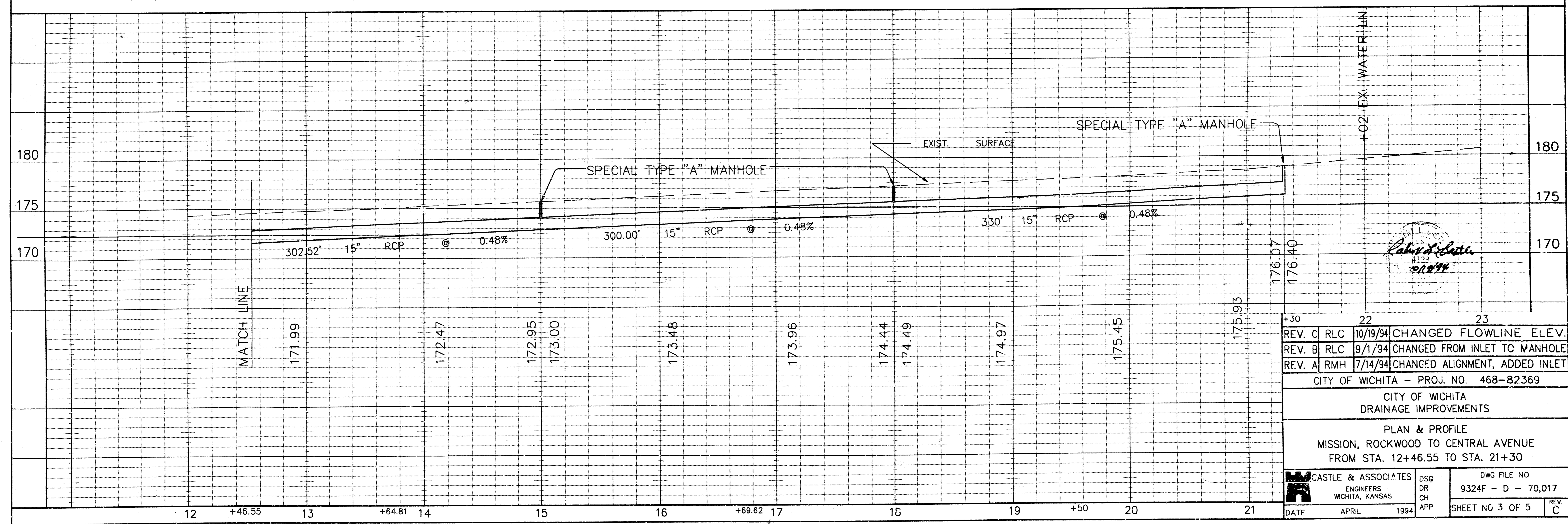
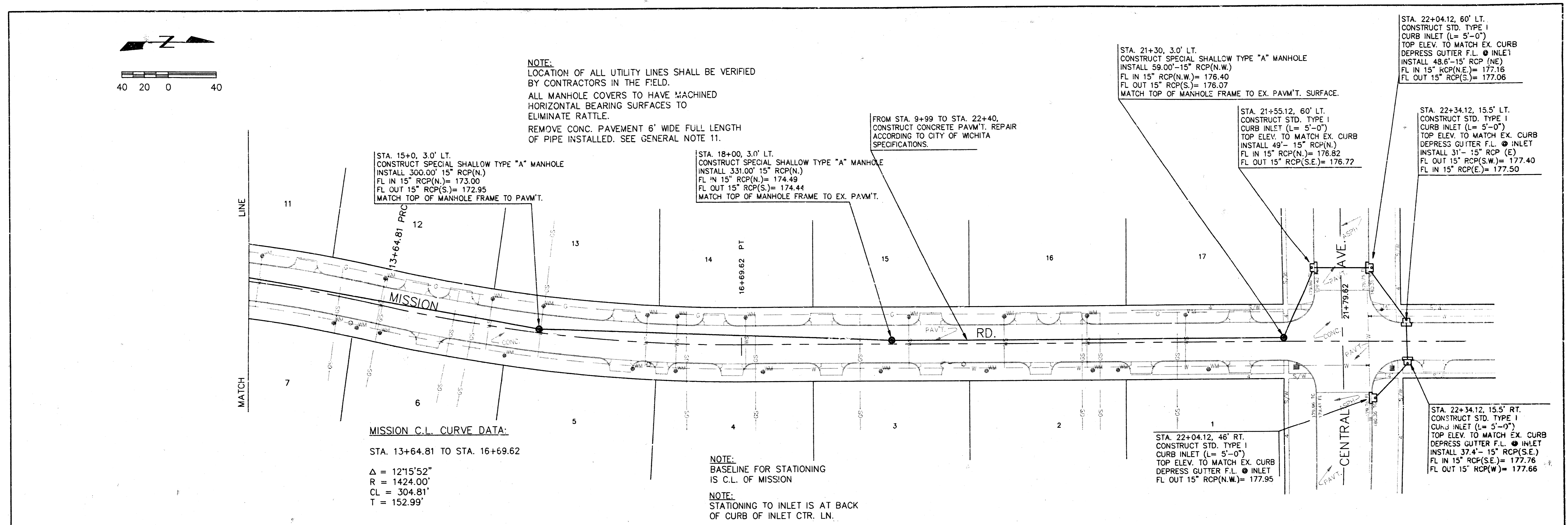
NOTE:
 LOCATION OF ALL UTILITY LINES SHALL BE VERIFIED BY CONTRACTOR IN THE FIELD.
 ALL MANHOLE COVERS TO HAVE MACHINED HORIZONTAL BEARING SURFACES TO ELIMINATE RATTLE.
 REMOVE CONC. PAVEMENT 6' WIDE FULL LENGTH OF PIPE INSTALLED. SEE GENERAL NOTE 11.

MISSION C.L. CURVE DATA
 STA. 10+60 TO STA. 12+46.55
 Δ = 12°15'52"
 R = 1424.00'
 CL = 304.81'
 T = 152.99'



REV. C	RLC	10/19/94	CHANGED FLOWLINE ELEV.
REV. B	RLC	9/1/94	CHANGED FROM INLET TO MANHOLE
REV. A	RMH	7/14/94	CHANGED ALIGNMENT, ADDED INLET
PROJ. NO. 468-82369			
CITY OF WICHITA DRAINAGE IMPROVEMENTS			
PLAN & PROFILE MISSION, ROCKWOOD TO CENTRAL AVENUE STA. 9+99 TO STA. 12+46.55 AND GENERAL NOTES			
CASTLE & ASSOCIATES ENGINEERS WICHITA, KANSAS		DSG DR CH APP	DWG FILE NO. 9324F - D - 70,016
DATE	APRIL	1994	SHEET NO 2 OF 5

AutoCAD Drawing File Name 9234-4 .DWG
 Archive Computer Disk # AC-DWG-19
 Plot Scale 1"=20'



NOTE:
 LOCATION OF ALL UTILITY LINES SHALL BE VERIFIED
 BY CONTRACTORS IN THE FIELD.
 ALL MANHOLE COVERS TO HAVE MACHINED
 HORIZONTAL BEARING SURFACES TO
 ELIMINATE RATTLE.
 REMOVE CONC. PAVEMENT 6' WIDE FULL LENGTH
 OF PIPE INSTALLED. SEE GENERAL NOTE 11.

FROM STA. 9+99 TO STA. 22+40,
 CONSTRUCT CONCRETE PAVMT. REPAIR
 ACCORDING TO CITY OF WICHITA
 SPECIFICATIONS.

STA. 15+0, 3.0' LT.
 CONSTRUCT SPECIAL SHALLOW TYPE "A" MANHOLE
 INSTALL 300.00' 15" RCP(N.)
 FL IN 15" RCP(N.)= 173.00
 FL OUT 15" RCP(S.)= 172.95
 MATCH TOP OF MANHOLE FRAME TO PAVMT.

STA. 18+00, 3.0' LT.
 CONSTRUCT SPECIAL SHALLOW TYPE "A" MANHOLE
 INSTALL 331.00' 15" RCP(N.)
 FL IN 15" RCP(N.)= 174.49
 FL OUT 15" RCP(S.)= 174.44
 MATCH TOP OF MANHOLE FRAME TO EX. PAVMT.

STA. 21+30, 3.0' LT.
 CONSTRUCT SPECIAL SHALLOW TYPE "A" MANHOLE
 INSTALL 59.00'-15" RCP(N.W.)
 FL IN 15" RCP(N.W.)= 176.40
 FL OUT 15" RCP(S.)= 176.07
 MATCH TOP OF MANHOLE FRAME TO EX. PAVMT. SURFACE.

STA. 21+55.12, 60' LT.
 CONSTRUCT STD. TYPE I
 CURB INLET (L= 5'-0")
 TOP ELEV. TO MATCH EX. CURB
 INSTALL 49'- 15" RCP(N.)
 FL IN 15" RCP(N.)= 176.82
 FL OUT 15" RCP(S.E.)= 176.72

STA. 22+04.12, 60' LT.
 CONSTRUCT STD. TYPE I
 CURB INLET (L= 5'-0")
 TOP ELEV. TO MATCH EX. CURB
 DEPRESS GUTTER F.L. @ INLET
 INSTALL 48.6'-15" RCP (NE)
 FL IN 15" RCP(N.E.)= 177.16
 FL OUT 15" RCP(S.)= 177.06

STA. 22+34.12, 15.5' LT.
 CONSTRUCT STD. TYPE I
 CURB INLET (L= 5'-0")
 TOP ELEV. TO MATCH EX. CURB
 DEPRESS GUTTER F.L. @ INLET
 INSTALL 31'- 15" RCP (E)
 FL OUT 15" RCP(S.W.)= 177.40
 FL IN 15" RCP(E.)= 177.50

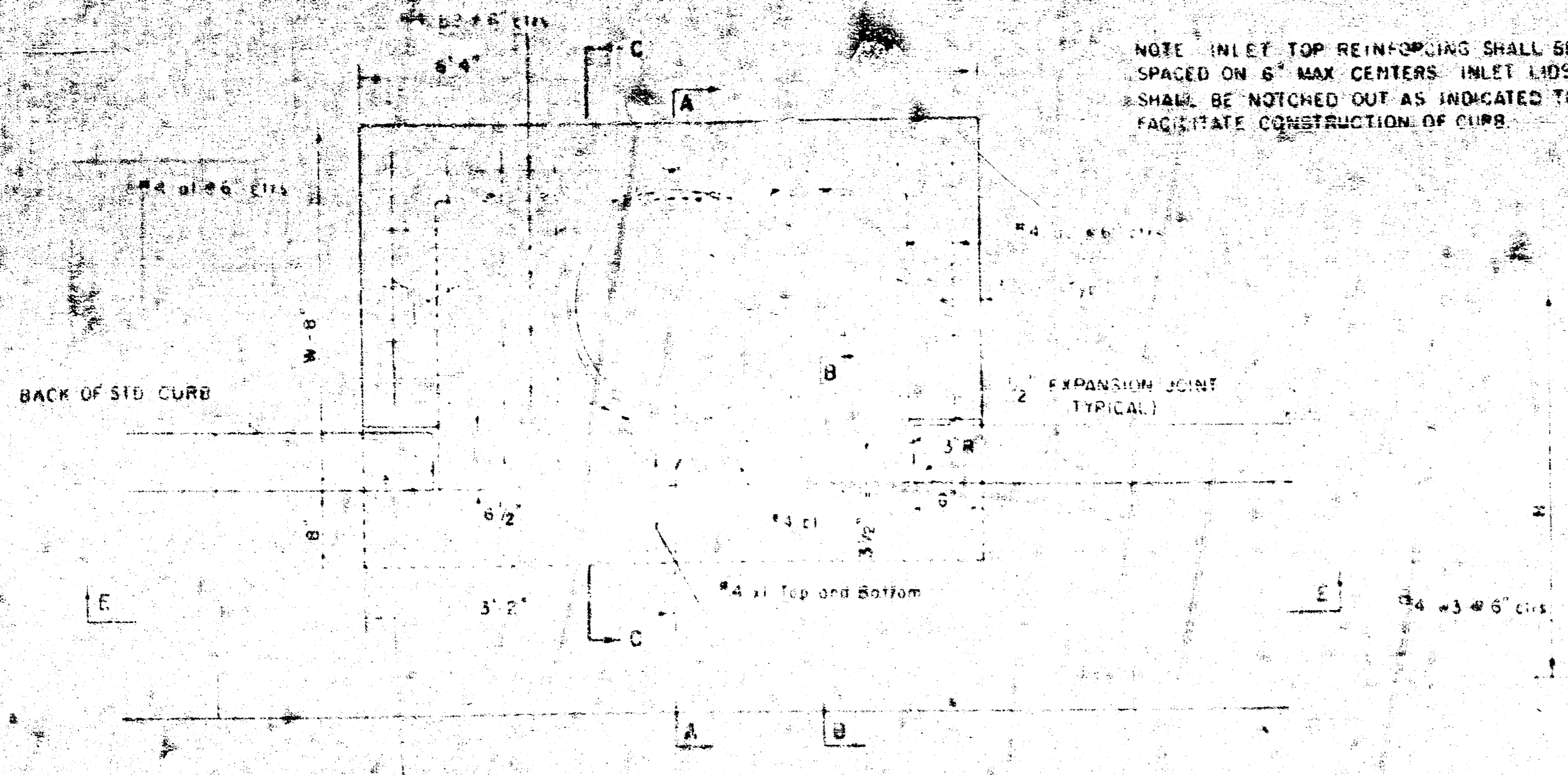
MISSION C.L. CURVE DATA:
 STA. 13+64.81 TO STA. 16+69.62
 $\Delta = 121'52"$
 $R = 1424.00'$
 $CL = 304.81'$
 $T = 152.99'$

NOTE:
 BASELINE FOR STATIONING
 IS C.L. OF MISSION
 NOTE:
 STATIONING TO INLET IS AT BACK
 OF CURB OF INLET CTR. LN.

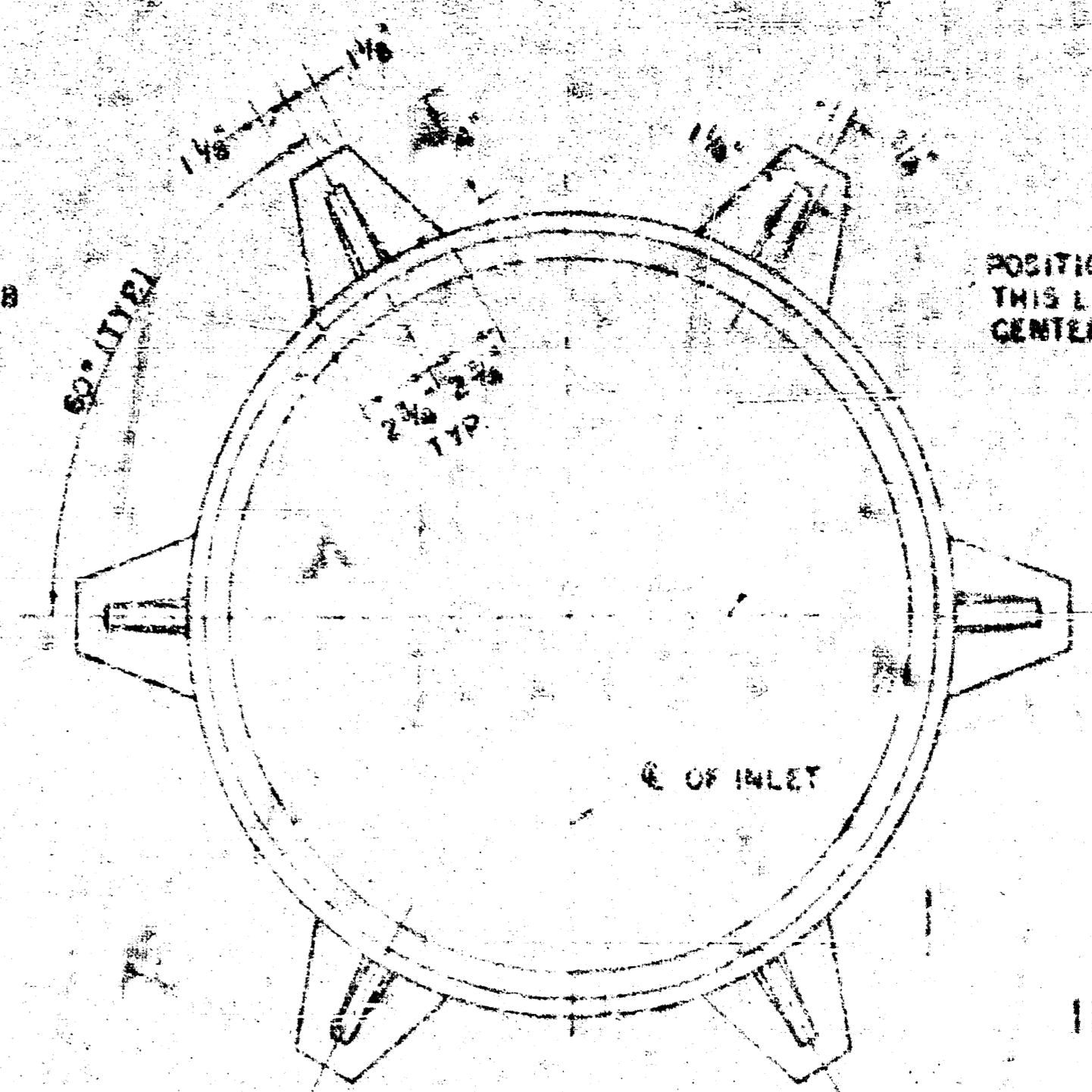
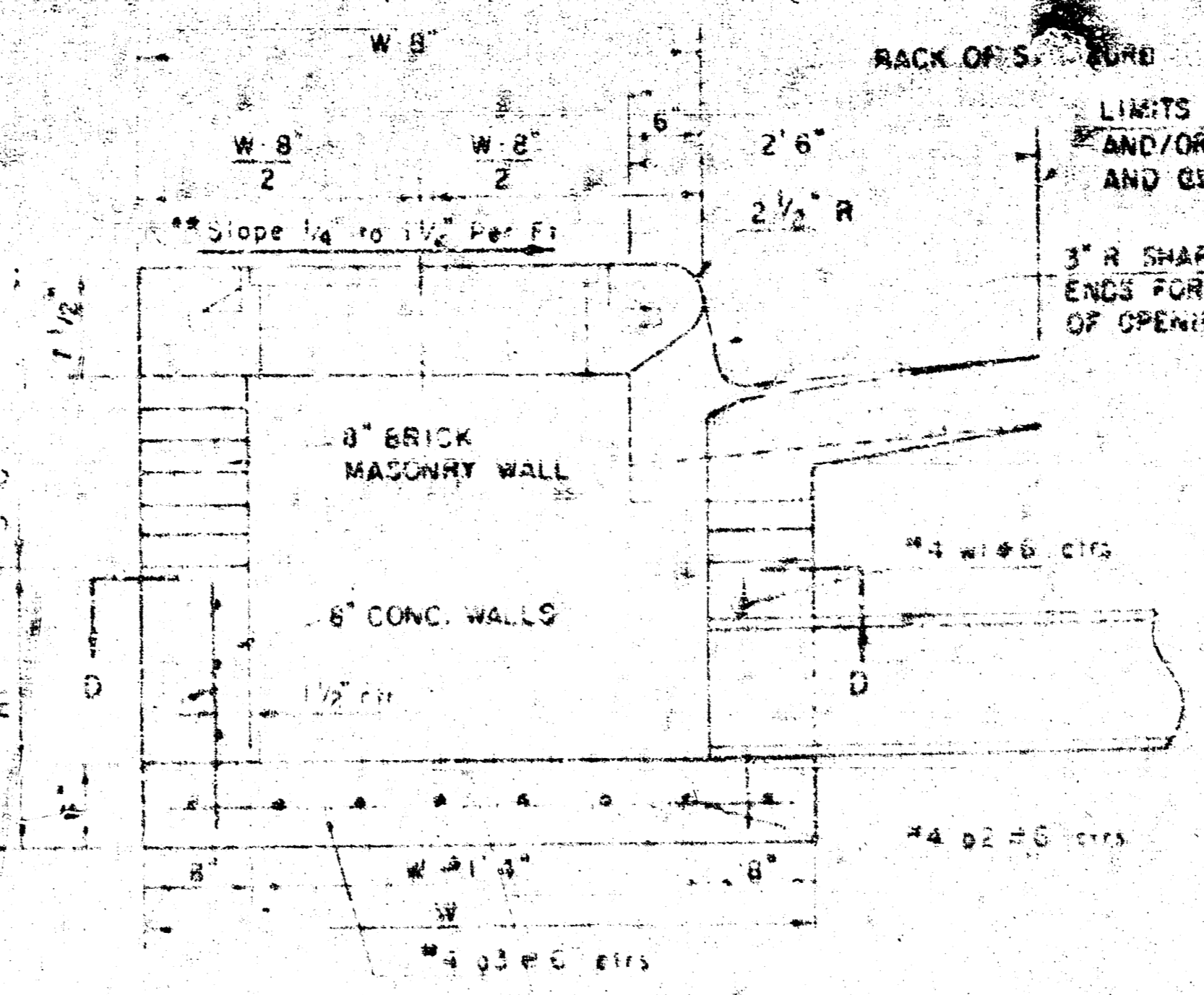
STA. 22+04.12, 46' RT.
 CONSTRUCT STD. TYPE I
 CURB INLET (L= 5'-0")
 TOP ELEV. TO MATCH EX. CURB
 DEPRESS GUTTER F.L. @ INLET
 FL OUT 15" RCP(N.W.)= 177.95

STA. 22+34.12, 15.5' RT.
 CONSTRUCT STD. TYPE I
 CURB INLET (L= 5'-0")
 TOP ELEV. TO MATCH EX. CURB
 DEPRESS GUTTER F.L. @ INLET
 INSTALL 37.4'- 15" RCP(S.E.)
 FL IN 15" RCP(S.E.)= 177.76
 FL OUT 15" RCP(W.)= 177.66

REV. C	RLC	10/19/94	CHANGED FLOWLINE ELEV.
REV. B	RLC	9/1/94	CHANGED FROM INLET TO MANHOLE
REV. A	RMH	7/14/94	CHANGED ALIGNMENT, ADDED INLET
CITY OF WICHITA - PROJ. NO. 468-82369			
CITY OF WICHITA DRAINAGE IMPROVEMENTS			
PLAN & PROFILE MISSION, ROCKWOOD TO CENTRAL AVENUE FROM STA. 12+46.55 TO STA. 21+30			
CASTLE & ASSOCIATES ENGINEERS WICHITA, KANSAS		DSG DR CH APP	DWG FILE NO 9324F - D - 70,017
DATE	APRIL	1994	SHEET NO 3 OF 5 REV. C

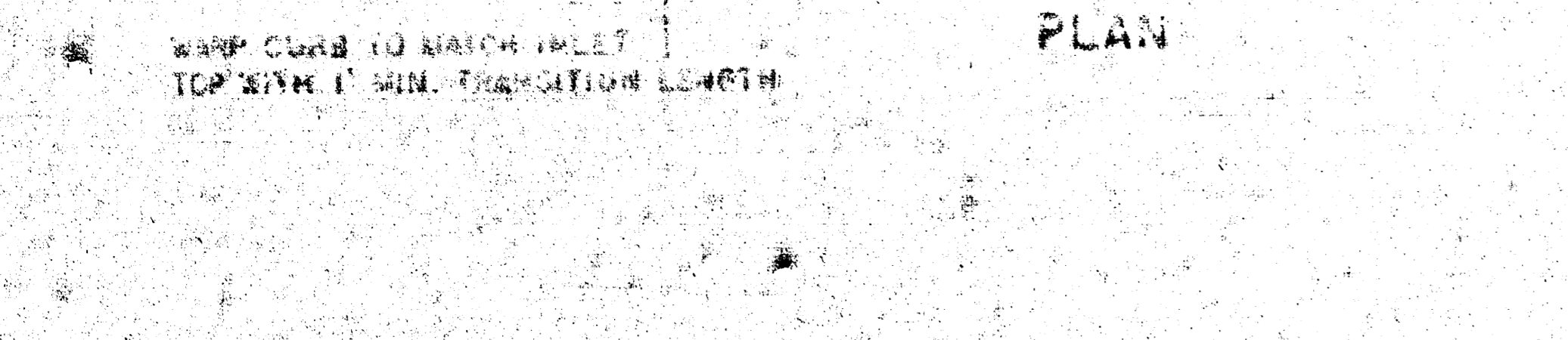


NOTE: INLET TOP REINFORCING SHALL BE SPACED ON 6" MAX CENTERS. INLET LIDS SHALL BE NOTCHED OUT AS INDICATED TO FACILITATE CONSTRUCTION OF CURB.



POSITION RING SUCH THAT THIS LINE IS PARALLEL WITH CENTERLINE OF PAVEMENT.

INLET FRAME
WEIGHT - 180 LBS.



SECTION E-E

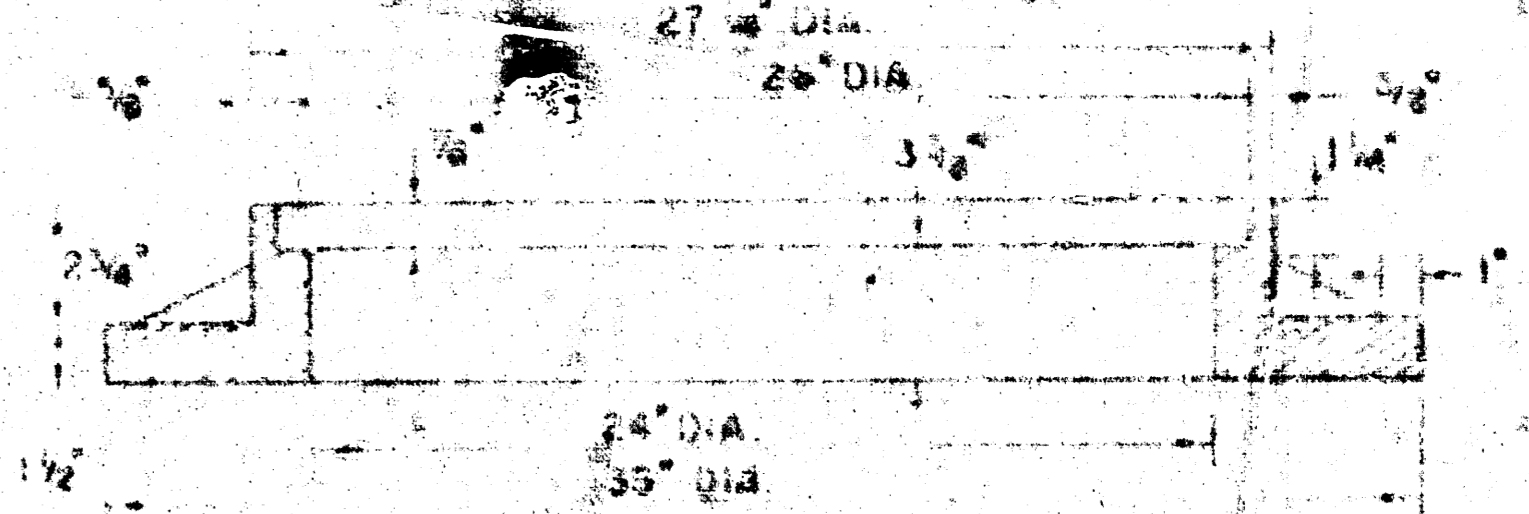
NOTE: CONCRETE TOPS TO BE INSTALLED ON THIN MORTAR COURSE TO INSURE FULL SUPPORT ALONG BRICK WALLS. CONCRETE TOPS MAY BE CAST IN PLACE OR PRECAST CONCRETE USED FOR INLET CONSTRUCTION SHALL BE CONCRETE PAVEMENT MIX.

NOTE: Slope of Inlet Top to match Sidewalk or Parking Slopes within Limits Indicated.

NOTE: CONTRACTOR SHALL HAVE THE OPTION OF CONSTRUCTING 8" BRICK MASONRY WALLS BETWEEN THE CONCRETE INLET BASE AND TOP ON THIS INLET WHEN W = 6'-4" AND H = 7'-0" OR LESS.

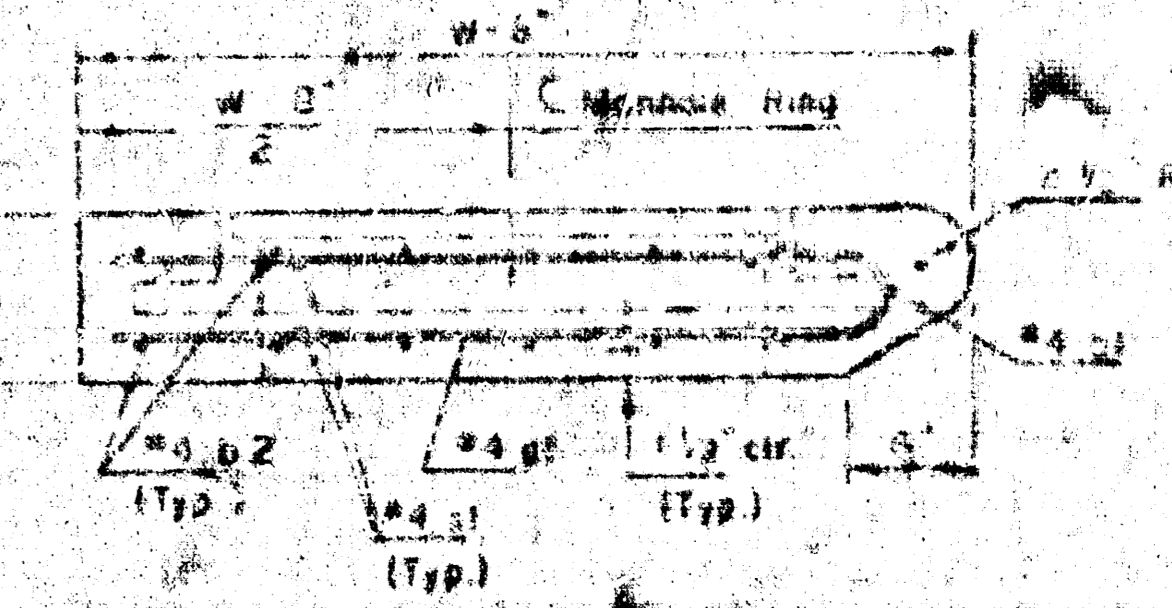
INLET INVERT SHALL BE SHAPED WITH 8" SACK SAND MIX CONCRETE TO CREATE FLOW CHANNELS AND TO INCREASE HYDRAULIC EFFICIENCY SUCH THAT THE INLET WILL BE SELF-CLEANING BETWEEN ALL INLET AND/OR OUTLET PIPES.

THE ENDS OF ALL PIPES INSTALLED IN INLETS SHALL BE CUT OFF FLUSH WITH THE INSIDE FACE OF THE INLET WALL.



SECTION B-B

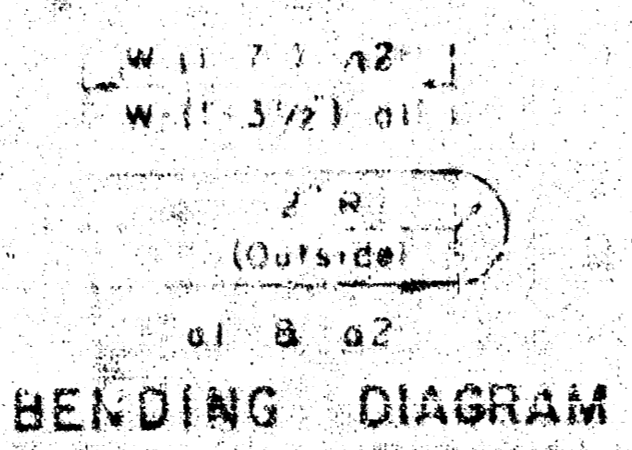
SEE CITY OF WICHITA STANDARD MANHOLE FRAME AND COVER DETAIL SHEET FOR COVER DETAILS TO BE USED WITH INLET FRAME.



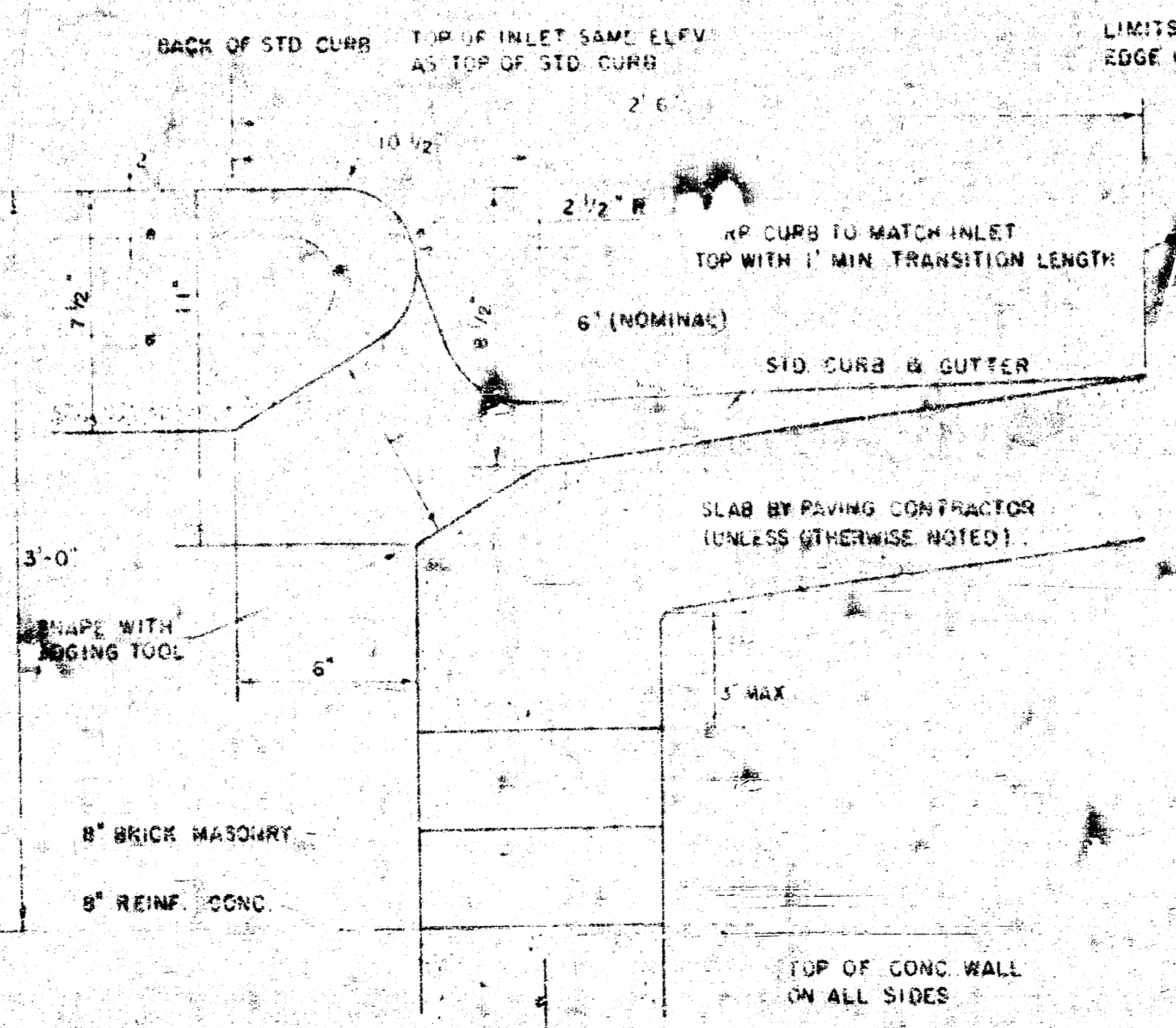
SECTION C-C

PRECAST SLAB AND FLOOR REINFORCING									
Slab No.	W	L	THK	NO. TOP	NO. BOT	NO. SIDE	NO. CORN	NO. CIRC	NO. DIA
1	4'-4"	6'-4"	7 1/2"	21	8	SMALLER			0.33
2	5'-4"	6'-4"	7 1/2"	24	8	10"			0.51
3	6'-4"	6'-4"	7 1/2"	27	8	12"			0.64
4	7'-4"	6'-4"	7 1/2"	30	8	14"			0.77
5	8'-4"	6'-4"	7 1/2"	33	8	16"			0.90

STANDARD CURB INLET PRECAST TOPS			
W	PRECAST TOP SIZE	PIPE SIZE	CU YD CONC.
4'-4"	3'0" x 6'4" x 7 1/2"	21" & SMALLER	0.33
5'-4"	4'8" x 6'4" x 7 1/2"	24" & 30"	0.51
6'-4"	5'8" x 6'4" x 7 1/2"	36" & 42"	0.64
7'-4"	6'8" x 6'4" x 7 1/2"	48" & 54"	0.77
8'-4"	7'8" x 6'4" x 7 1/2"	60" & 66"	0.90



BENDING DIAGRAM



SECTION D-D

REVISED 2-15-1993

DETAIL STANDARD TYPE I CURB INLET

CITY OF WICHITA, KANSAS

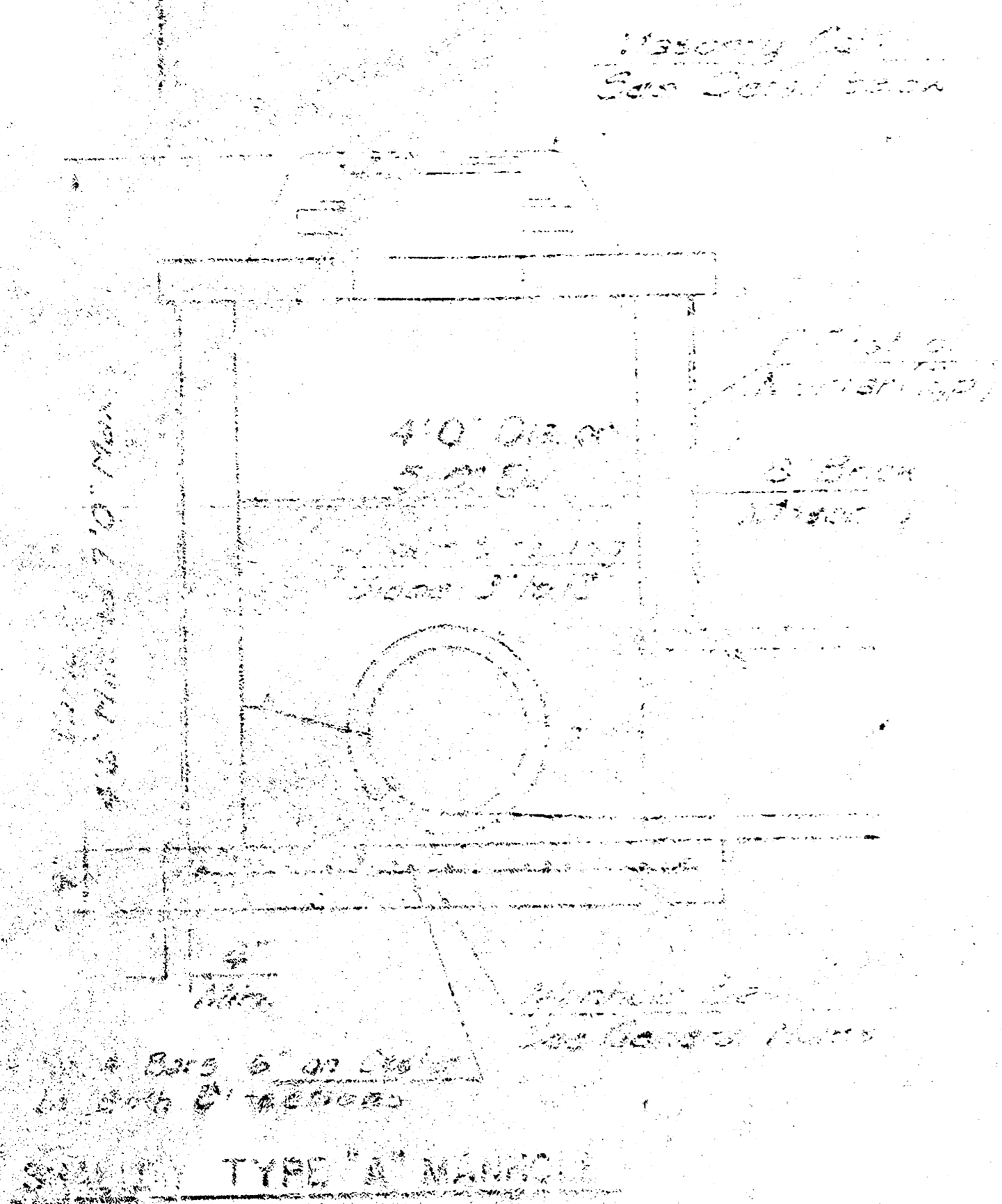
INLET OPENING - 6" x 5'0"

PROJ. NO. 483-82382

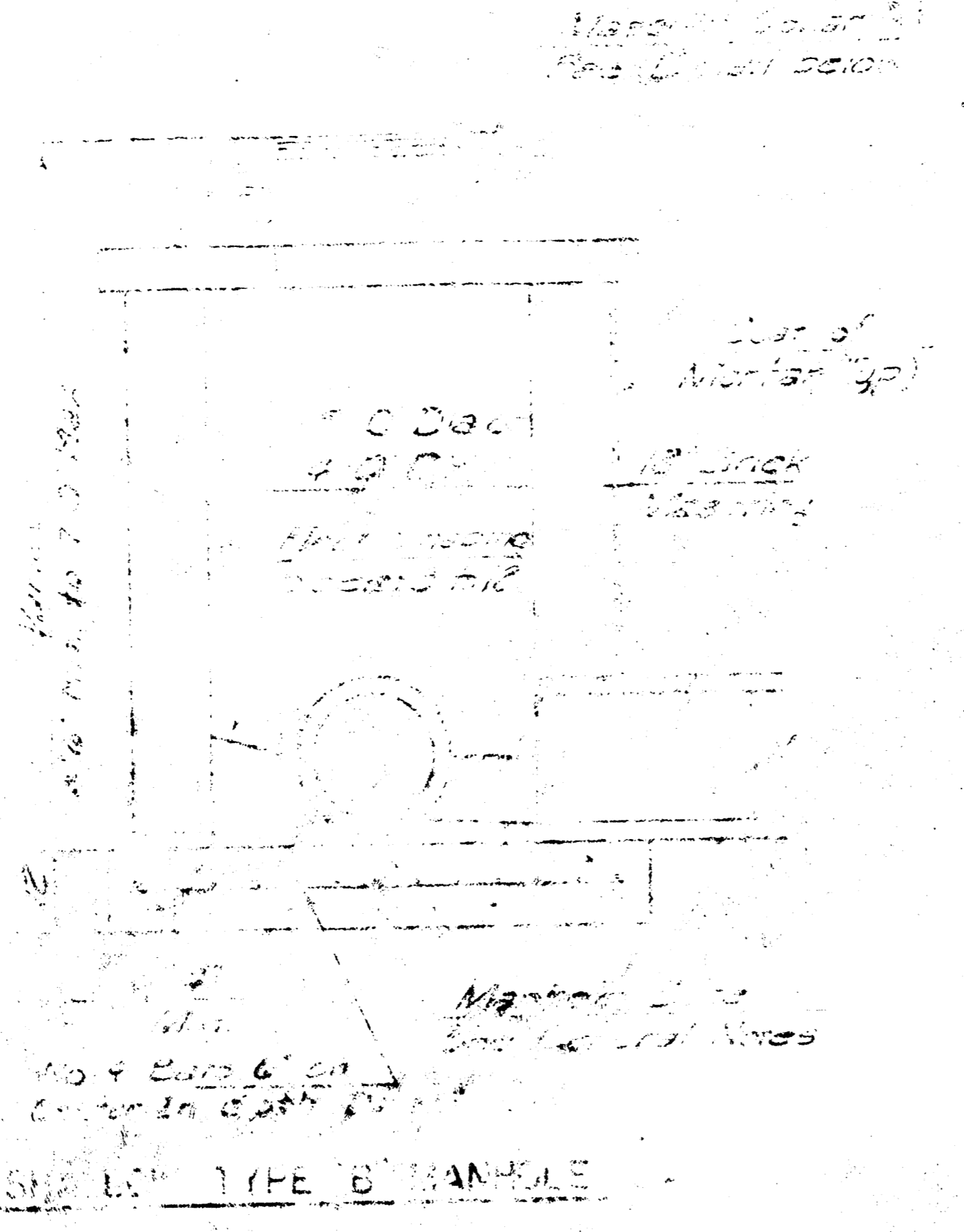
JUNE 1984

9324F-D-20,003

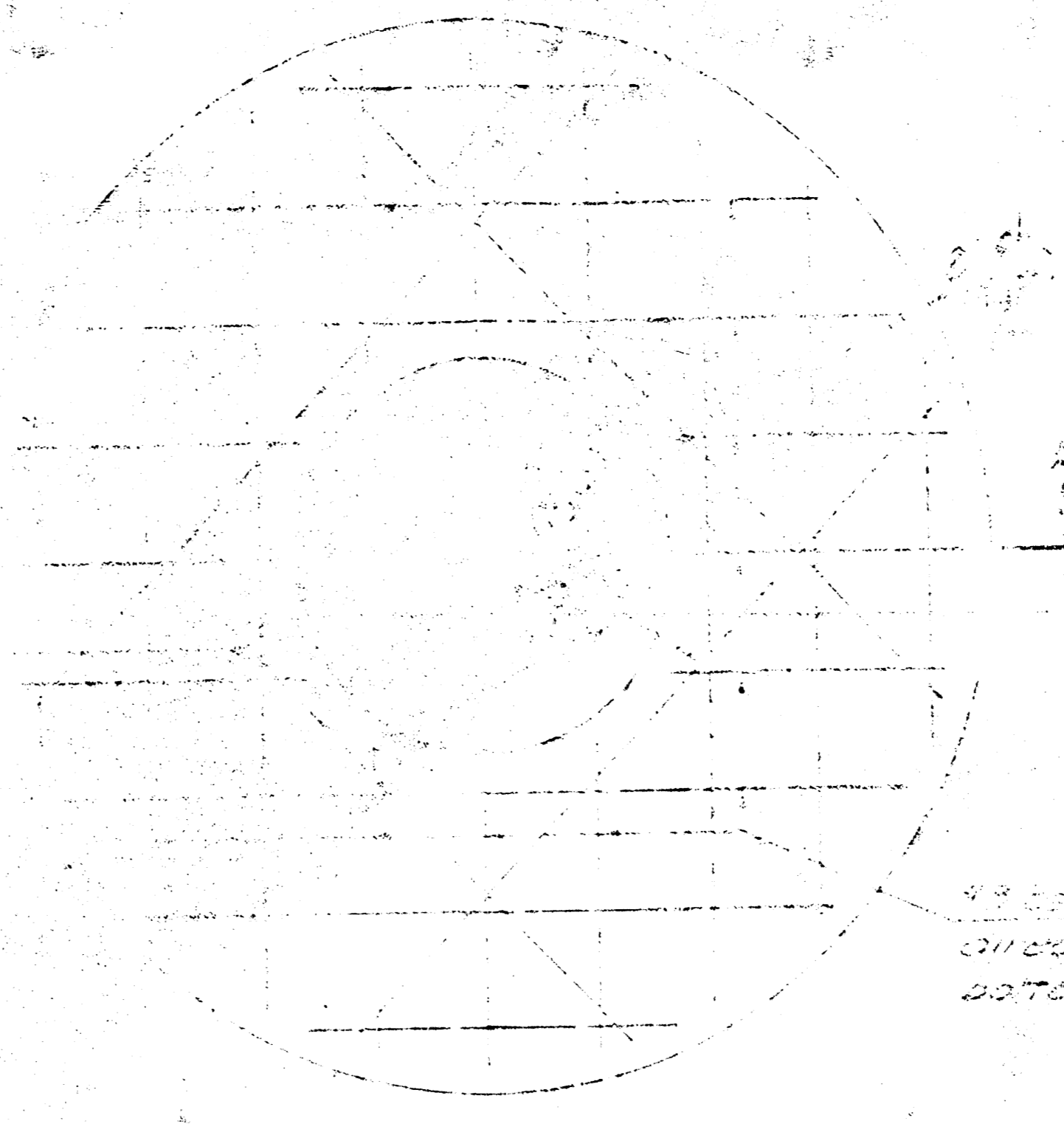
SHEET NO. 2 OF 3



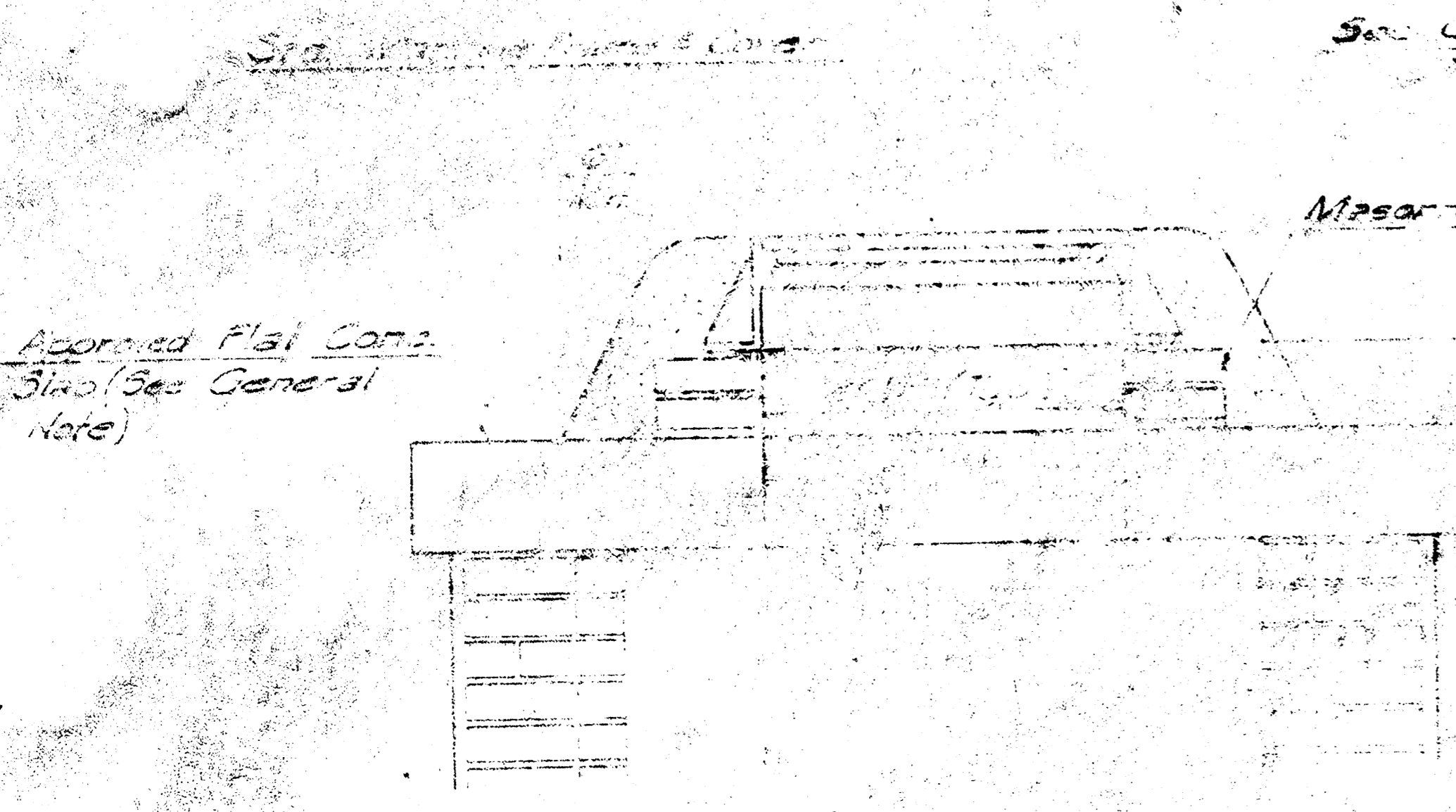
SPECIAL SHALLOW TYPE "A" MANHOLE



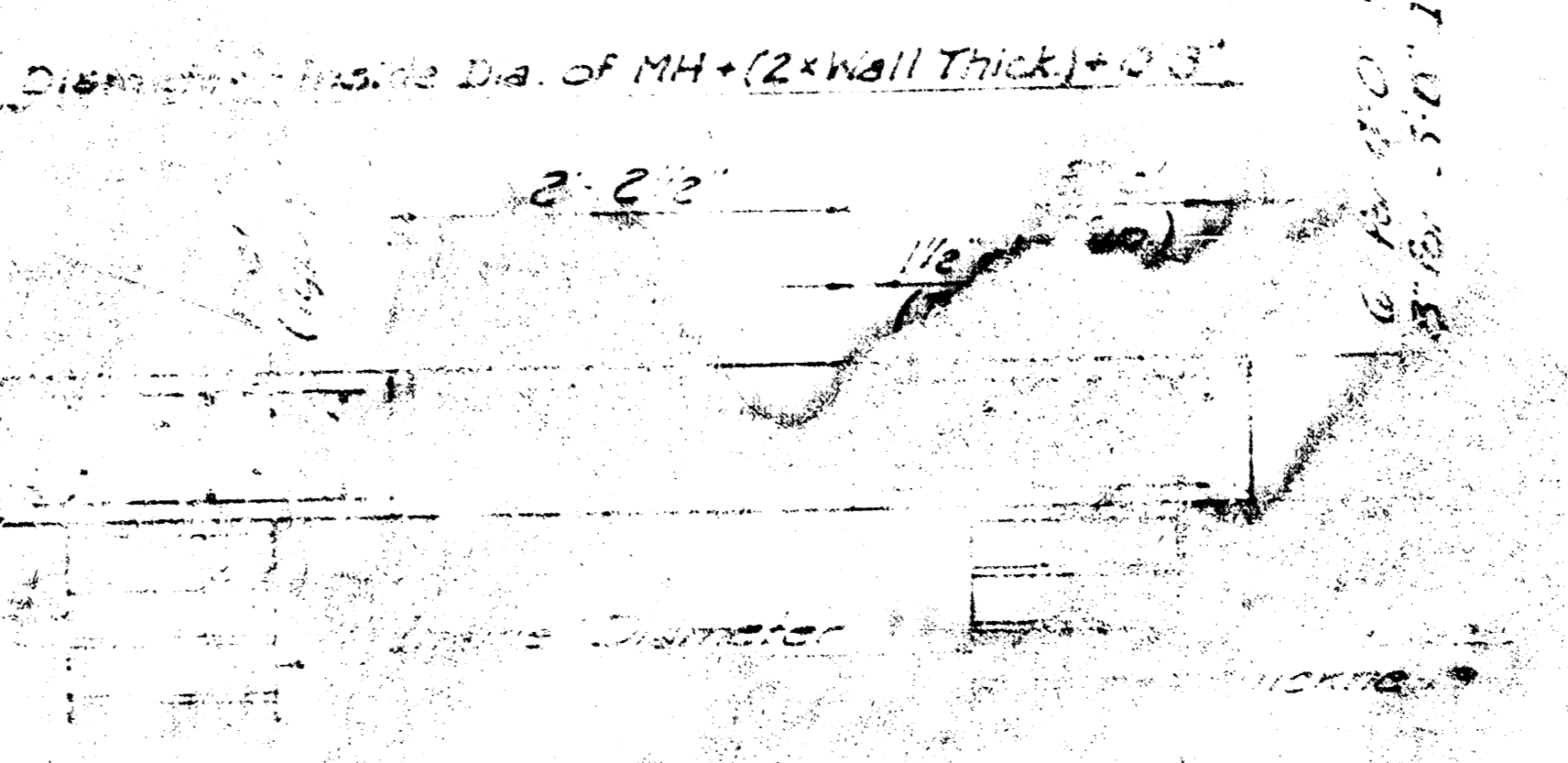
SPECIAL SHALLOW TYPE "B" MANHOLE



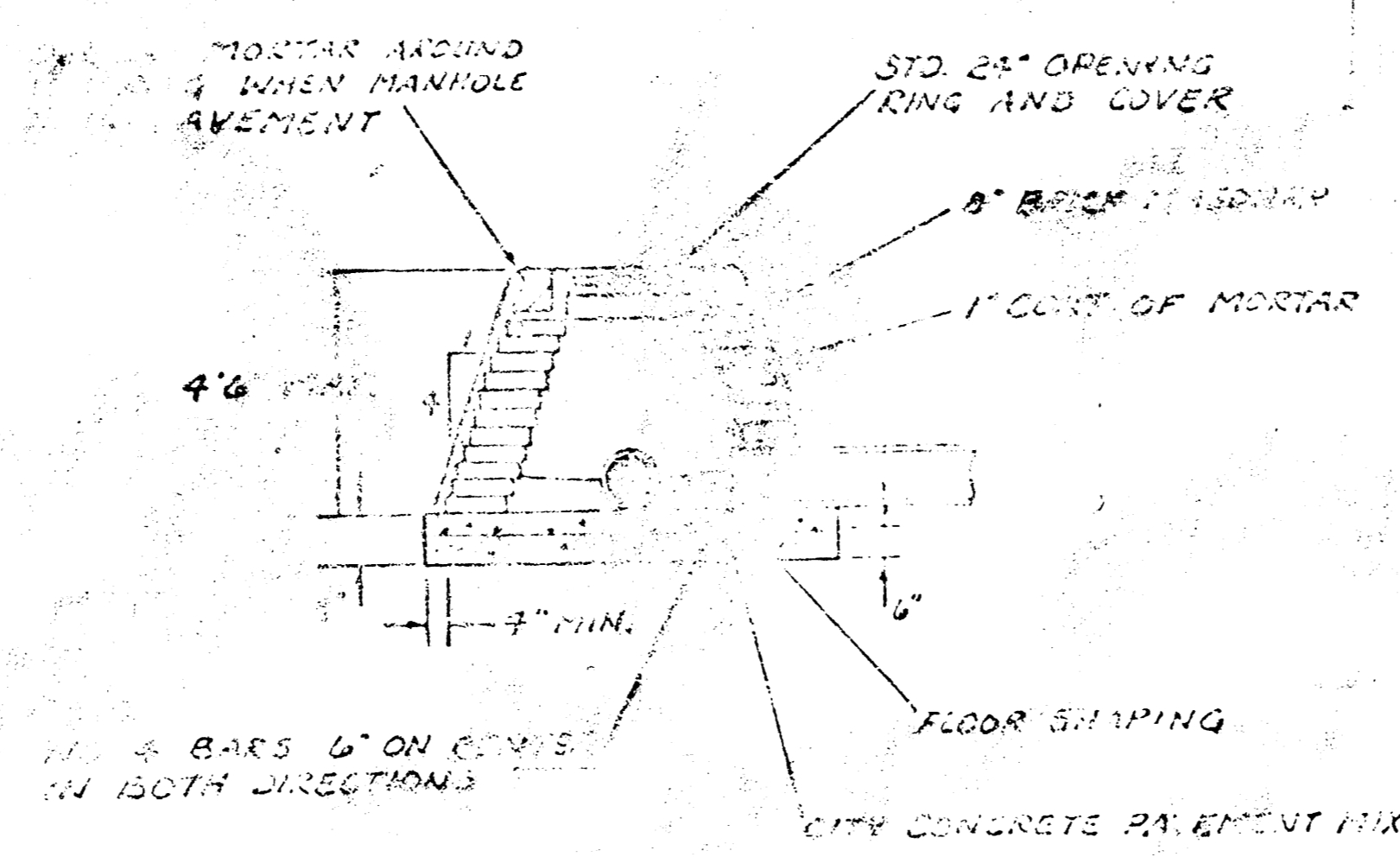
PLAN



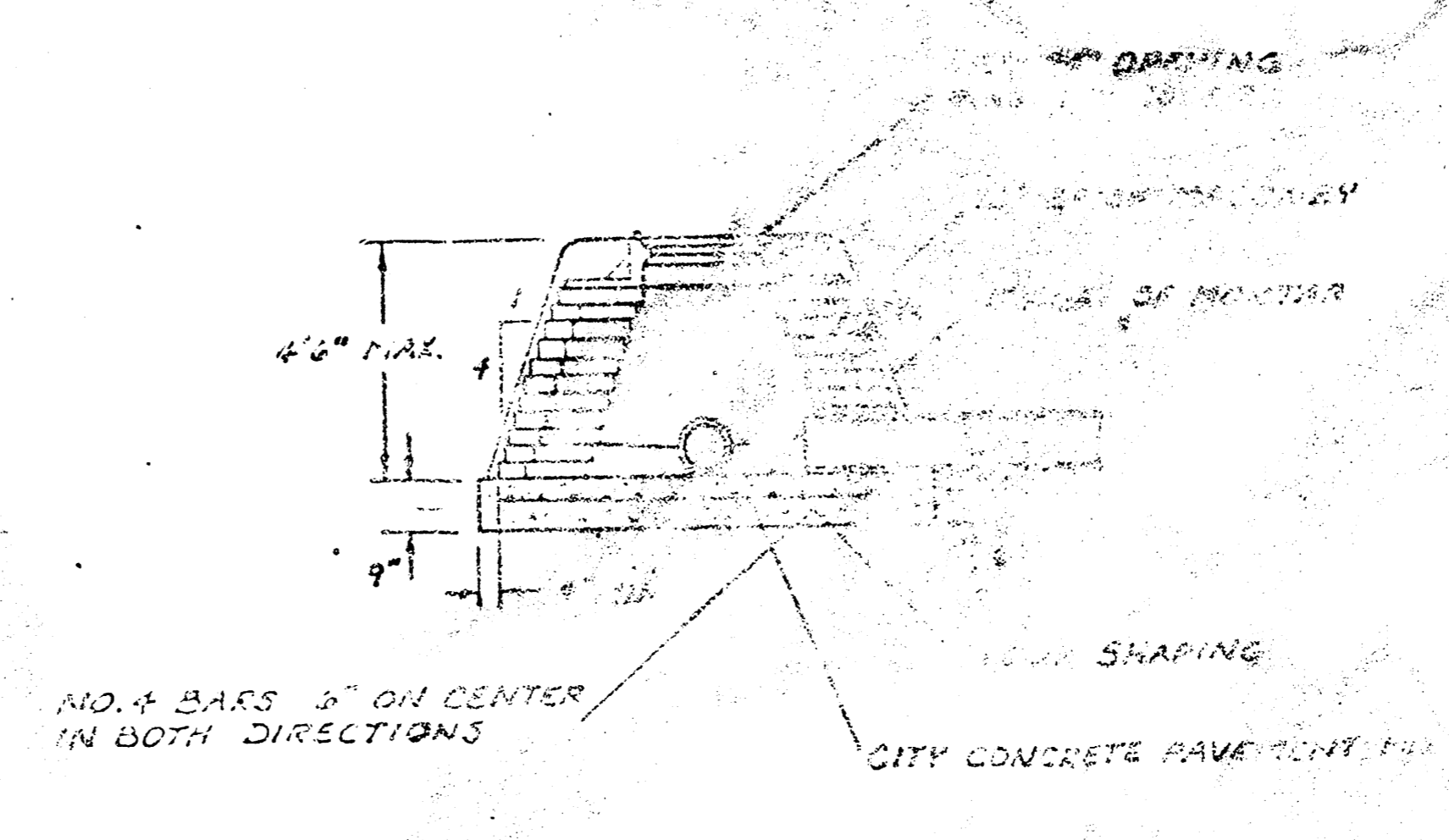
MASONRY COLLAR DETAIL



SECTION A-A
FLAT CONCRETE SLAB DETAILS



SPECIAL SHALLOW TYPE "A" MANHOLE



SPECIAL SHALLOW TYPE "B" MANHOLE

GENERAL NOTES

1. MANHOLE SHALL BE CONSTRUCTED IN ACCORDANCE WITH THE SPECIFICATIONS OF THE CITY OF WICHITA, KANSAS, STANDARD SPECIFICATIONS FOR CONSTRUCTION OF PUBLIC WORKS, LATEST EDITION, AND THE CITY STANDARD SPECIFICATIONS FOR CONSTRUCTION OF PUBLIC WORKS, LATEST EDITION, AND THE CITY STANDARD SPECIFICATIONS FOR CONSTRUCTION OF PUBLIC WORKS, LATEST EDITION, AND THE CITY STANDARD SPECIFICATIONS FOR CONSTRUCTION OF PUBLIC WORKS, LATEST EDITION.
2. REINFORCING STEEL SHALL BE PLACED IN THE MANHOLE BASE AND SHALL CONSIST OF NO. 4 BARS SPACED 6" ON CENTER IN BOTH DIRECTIONS. THE MANHOLE BASE REINFORCEMENT SHALL BE PLACED AT THE BOTTOM OF THE MANHOLE BASE. ALL LOADS FOR FURNISHING AND INSTALLING REINFORCING STEEL SHALL BE INCLUDED IN THE UNIT PRICE FOR THE MANHOLE.
3. THE FLOORS OF ALL MANHOLES SHALL BE SLOPED WITH FLOW CHANNELS SUCH THAT THE MANHOLES WILL BE SELF-CLEANING AND FREE OF DEBRIS. FLOOR SHALL BE REINFORCED AS SHOWN THROUGH THE MANHOLE AND SHALL BE PLACED TO THE OUTSIDE OF THE FLOW CHANNELS. FLOOR SHALL BE SLOPED TO THE OUTSIDE OF THE MANHOLE. FLOOR SHALL BE SLOPED TO THE OUTSIDE OF THE MANHOLE. FLOOR SHALL BE SLOPED TO THE OUTSIDE OF THE MANHOLE.
4. PIPES INSTALLED WITHIN THE EXCAVATION SHALL BE PROTECTED BY A CONCRETE SLAB PIPE IS USED, THE COVER SHALL EXTEND TO THE TOP OF THE MANHOLE. THE COVER SHALL BE REINFORCED WITH NO. 4 BARS WHICH WILL MAINTAIN THE CLEARANCE BETWEEN THE COVER AND THE MANHOLE WITHIN MANHOLE EXCAVATION ON TO THE TOP OF THE MANHOLE. THE COVER SHALL BE INCLUDED IN THE UNIT PRICE FOR THE MANHOLE.
5. MANHOLE COVER CASTINGS AND MANHOLE FITTINGS SHALL BE IN ACCORDANCE WITH THE REQUIREMENTS AS INDICATED IN THE STANDARD SPECIFICATIONS AND AS SHOWN IN THE STANDARD DETAIL DRAWINGS.
6. THE SLOPE OF INFLOWING PIPES SHALL NEVER BE LESS THAN THE SLOPE OF THE OUTFLOWING PIPE.
7. STANDARD SHALLOW MANHOLES TYPE "A" AND "B" SHALL BE PAID FOR AT THE UNIT PRICE \$10 PER EACH FOR THE TYPE AND DIMENSIONS INDICATED. STANDARD SPECIAL SHALLOW MANHOLES TYPE "A" AND "B" SHALL BE PAID FOR AT THE UNIT PRICE \$10 PER EACH FOR THE TYPE AND DIMENSIONS INDICATED. STANDARD SPECIAL SHALLOW MANHOLE DIAMETERS WILL BE 24" UNLESS INDICATED OTHERWISE.

CITY OF WICHITA, KANSAS
STANDARD SHALLOW MANHOLES
TYPE "A" AND TYPE "B"

PROJ. WY 468-00119 SHEET 5 OF 5