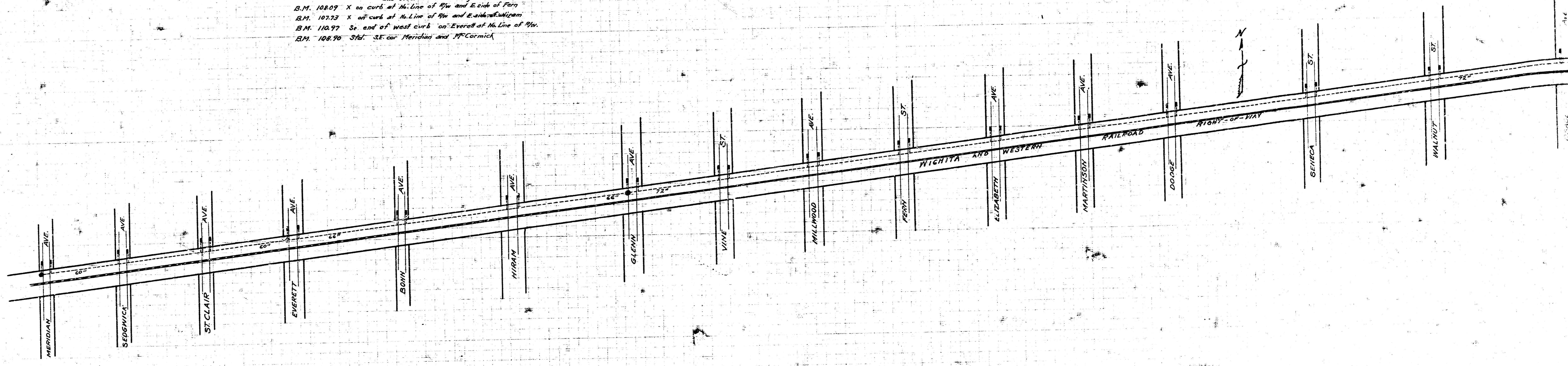
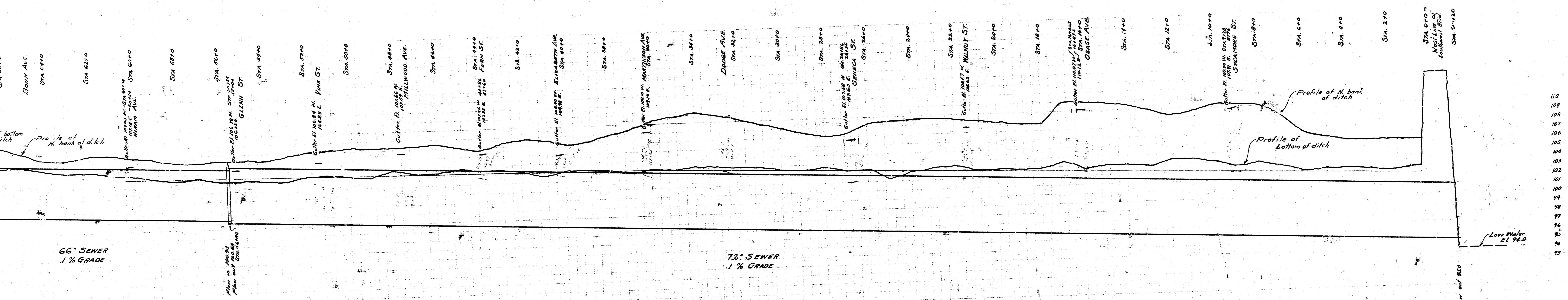
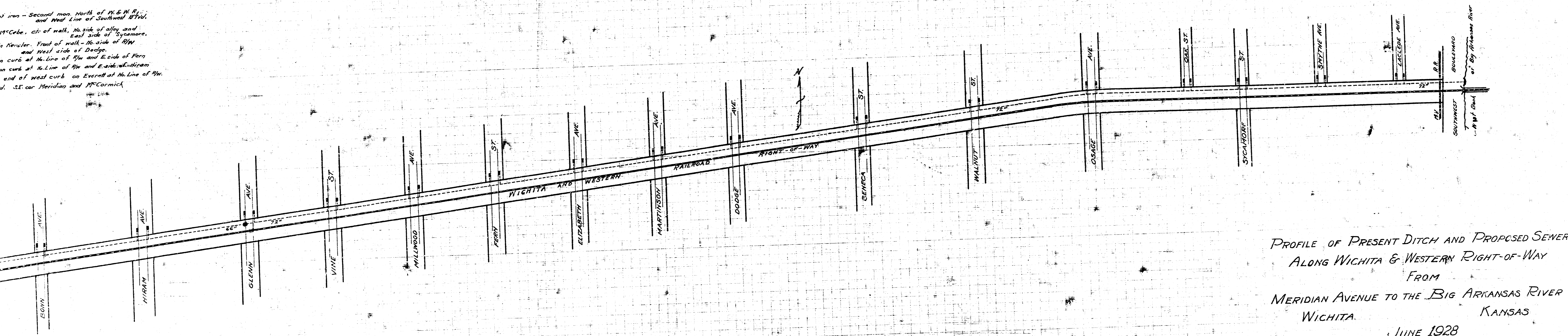


B.M. 111.55 Top of iron - Second man, north of M & M St. and West Line of Southward Blvd.
 B.M. 114.84 M in McCabe's, ch of walk, N side of alley and East side of Sycamore.
 B.M. 109.45 K in Reuler. Front of walk - N side of RW and West side of Dodge.
 B.M. 108.09 X on curb at N. Line of 9th and E. side of Ferry.
 B.M. 107.73 X on curb at N. Line of 9th and E. side of Elizabeth.
 B.M. 110.99 S. end of west curb on Everett at N. Line of 9th.
 B.M. 108.90 Std. SE cor Meridian and McCormick.





at intersection - Second man North of N. & N. B. and West Line of Southside Blvd. in center of walk, No. side of alley and East side of Sycamore. Newer. Front of walk - No. side of RW and West side of Dodge. on curb at No. Line of RW and East side of Perry on curb at No. Line of RW and East side of Hi-jum end of west curb on Everell at No. Line of RW. S.E. cor Meridian and McCormick



PROFILE OF PRESENT DITCH AND PROPOSED SEWER
ALONG WICHITA & WESTERN RIGHT-OF-WAY
FROM
MERIDIAN AVENUE TO THE BIG ARKANSAS RIVER
WICHITA, KANSAS
JUNE 1928