

ALLENS FARM PHASE II STORM WATER SEWER PLANS

PROJECT NO. 468-76-245-80001-000 000-007

CITY OF WICHITA, KANSAS
MARCH, 1985

GENERAL NOTES

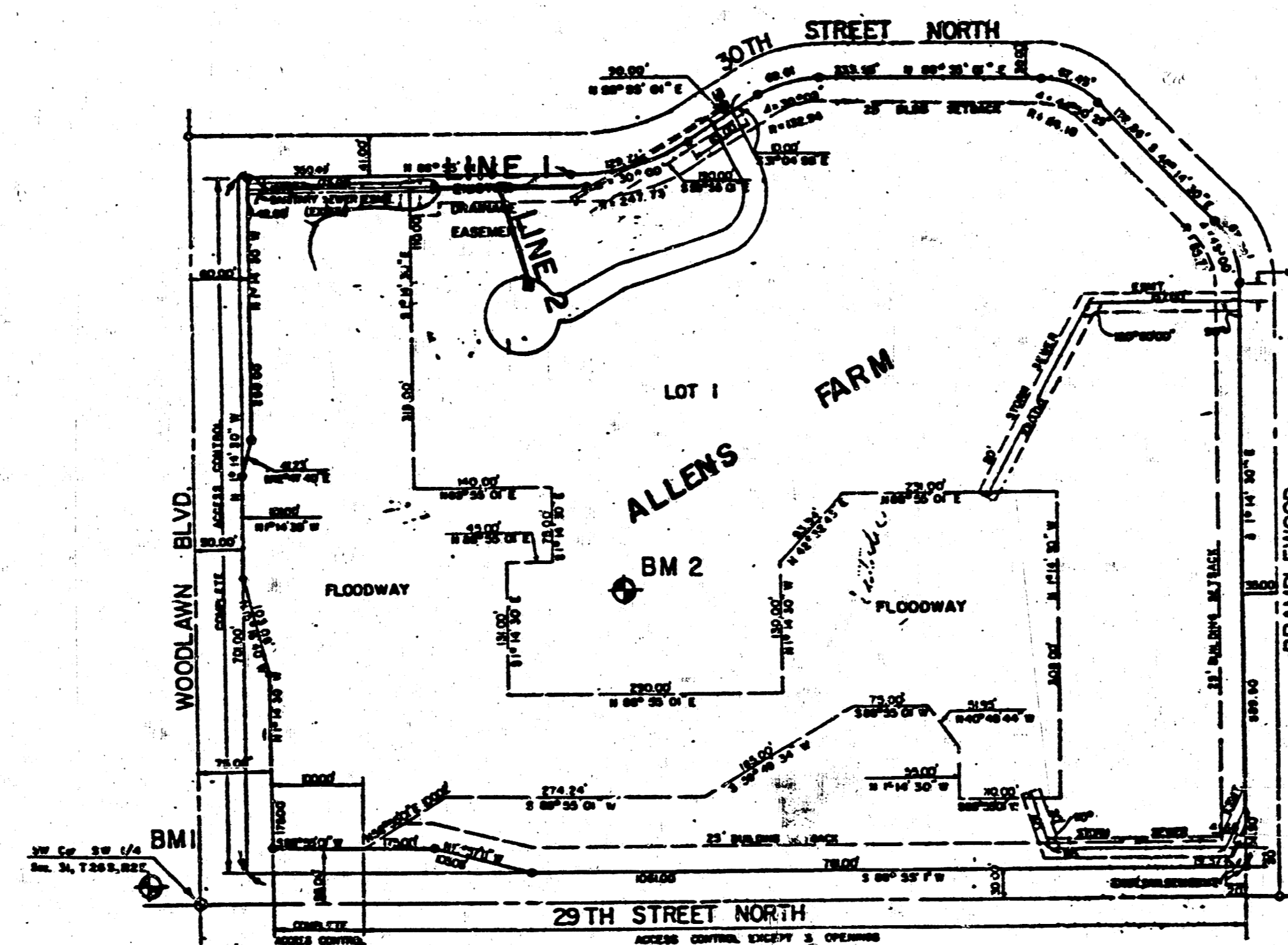
1. THE TOPS OF INLETS AND MANHOLES AS NOTED ON THE PLANS MAY VARY SO AS TO MEET PROPOSED TOP OF CURB ELEVATIONS OR PAVEMENT ELEVATIONS. THE FIELD ENGINEER SHALL LOCATE INLETS AND MANHOLES WITH REFERENCE TO PROPOSED PAVING PLANS OF THE PERTINENT STREETS.
2. ALL CONCRETE SHALL BE STANDARD PAVING MIX UNLESS OTHERWISE NOTED.
3. CONTRACTOR SHALL AVOID UNCOVERING EXISTING WATER LINES UNLESS ABSOLUTELY NECESSARY. UNCOVERING SHALL BE DONE ONLY IN THE PRESENCE OF A WATER DEPARTMENT ENGINEER.
4. THE CONTRACTOR SHALL BE RESPONSIBLE FOR PRESERVING PROPERTY IRONS. THE CONTRACTOR SHALL BE REQUIRED TO RE-ESTABLISH ANY PROPERTY IRONS WHICH ARE DAMAGED OR DESTROYED BY HIS CONSTRUCTION OPERATIONS. SUCH IRONS SHALL BE RE-ESTABLISHED BY A LICENSED LAND SURVEYOR OR A LICENSED PROFESSIONAL ENGINEER IN ACCORDANCE WITH STATE LAWS.
5. CONTRACTOR SHALL NOTIFY THE UTILITY COMPANIES OF CONSTRUCTION SCHEDULING.
6. EXISTING UTILITIES AND THEIR LOCATIONS, AS SHOWN ON THE PLANS, REPRESENT THE BEST INFORMATION OBTAINABLE FOR DESIGN. LOCATION INFORMATION HAS BEEN OBTAINED FROM THE VARIOUS UTILITY COMPANIES AND IS EITHER FROM COMPANY RECORD DRAWINGS OR COMPANY PROVIDED FIELD LOCATIONS. THE PLAN LOCATIONS SHOWN ARE NOT GUARANTEED. ADDITIONAL EXISTING UTILITIES MAY ALSO BE ENCOUNTERED.
7. CONTRACTOR SHALL FILL EXISTING CHANNEL WITH DESIREABLE MATERIAL FROM NEW CHANNEL COST SUBSIDIARY TO PROJECT.
8. ALL WORK DONE TO BE DONE ACCORDING TO CITY OF WICHITA SPECIFICATIONS.
9. TREES TO BE REMOVED ARE MARKED . ALL TREES WHICH IN THE OPINION OF THE FIELD ENGINEER CAN BE SAVED, SHALL BE SAVED.

NOTE: NOTIFY THE FOLLOWING COMPANIES PRIOR TO ANY EXCAVATION:

| | |
|------------------------|----------------|
| ARKLA GAS COMPANY | 942-8350 |
| BELL TELEPHONE COMPANY | 268-2256 |
| CABLEVISION | 269-3340 |
| GAS SERVICE COMPANY | 263-7511 |
| KANSAS GAS & ELECTRIC | 261-6375 |
| KANSAS ONE-CALL | 1-800-344-7233 |

BENCH MARKS

- B.M. 11 * set on N. Hdwl. RCB N.W. Cor. 45' W. & 17' N. of C.L. of 29th St. No. & Woodlawn
Elev. = 175.85
- B.M. 12 Top of 3/4" Bar @ Rad. Pt. on the Turn-a-Round.
455' E. & 375' N. of C.L. of 29th St. No. & Woodlawn
Elev. = 174.10



Scale: 1" = 200'

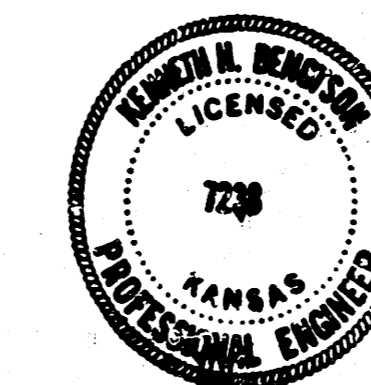
INDEX TO DRAWINGS

| SHEET NO. | DESCRIPTION |
|-----------|-----------------------|
| 1 | TITLE SHEET |
| 2 | PLAN & PROFILE LINE 1 |
| 3 | PLAN & PROFILE LINE 2 |
| 4A-4B | DETAIL SHEETS |
| 5 | FINAL PLAT |

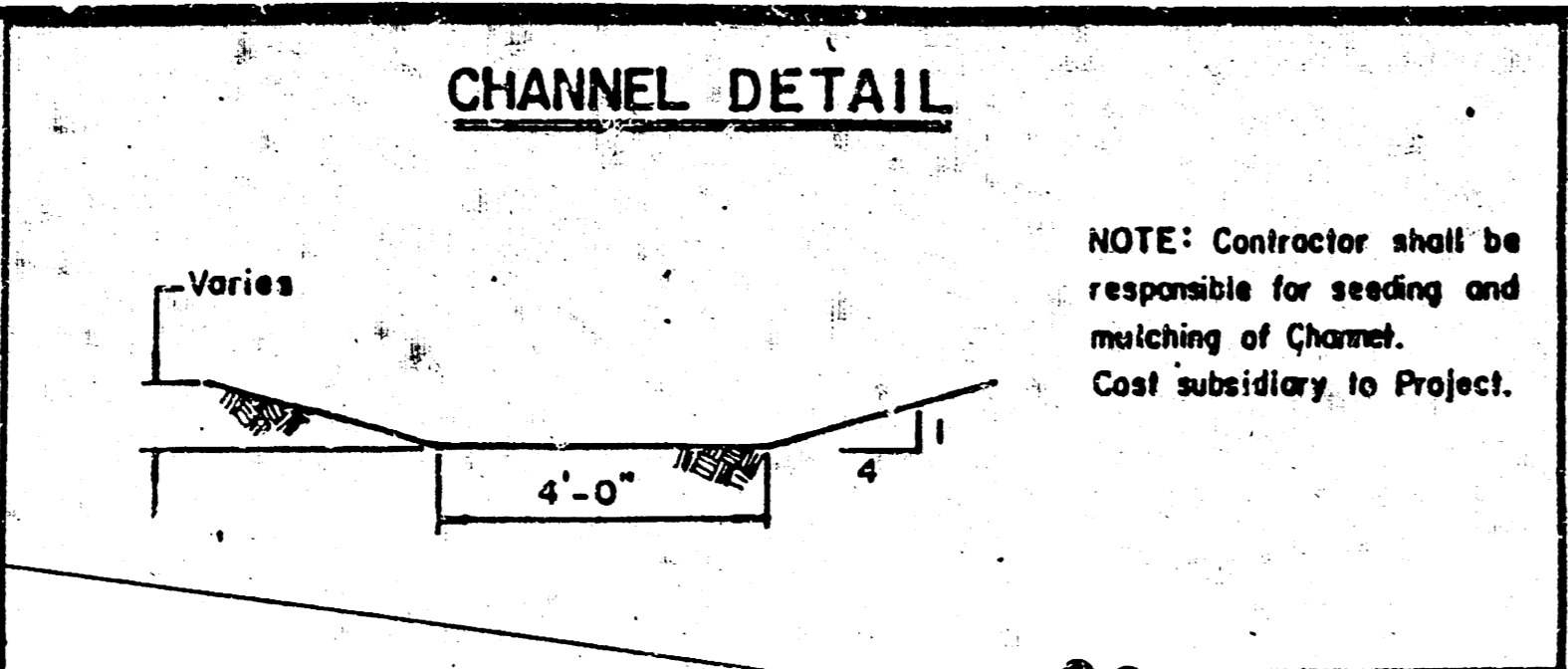
APPROVED AS NOTED
By CITY ENGINEER OF WICHITA
Sanitary Sewers
Storm Sewers *OK 3/18/85*
Driveway Approaches

Booked 1986 mcs

NOTE TO CONTRACTOR
This project will be constructed under the supervision of the CITY ENGINEER and conforming to the SPECIFICATIONS of the CITY OF WICHITA. The CONTRACTOR will prepay the City of Wichita for all costs of inspection.



| | | |
|--|---|---|
| | ALLENS FARM PHASE II STORM WATER SEWER PLANS | Design JMS Drawn by AMS Checked by JMS Date REA / 3/25/85 Title |
| | MID-KANSAS ENGINEERING CONSULTANTS PA 3500 NORTH ROCK ROAD BUILDING 1800 WICHITA, KANSAS 67226 | 682-6561 |



NOTE: COST OF SAWING, REMOVAL AND REPLACEMENT OF EXISTING PAVEMENT, FOR CONSTRUCTION OF DROP INLET, IS SUBSIDIARY TO COST OF THIS PROJECT.

CONSTRUCT DROP INLET 4'x2' W=2'0", L=4'0", Top = 171.40

SAW, REMOVE, REPLACE AND MATCH EXISTING CURBS AND PAVEMENT FOR CONSTRUCTION OF DROP INLET.

REMOVE EXISTING CURB INLET AND CONSTRUCT DROP INLET 4'x2' W=3'0", L=4'0", TOP = 171.40

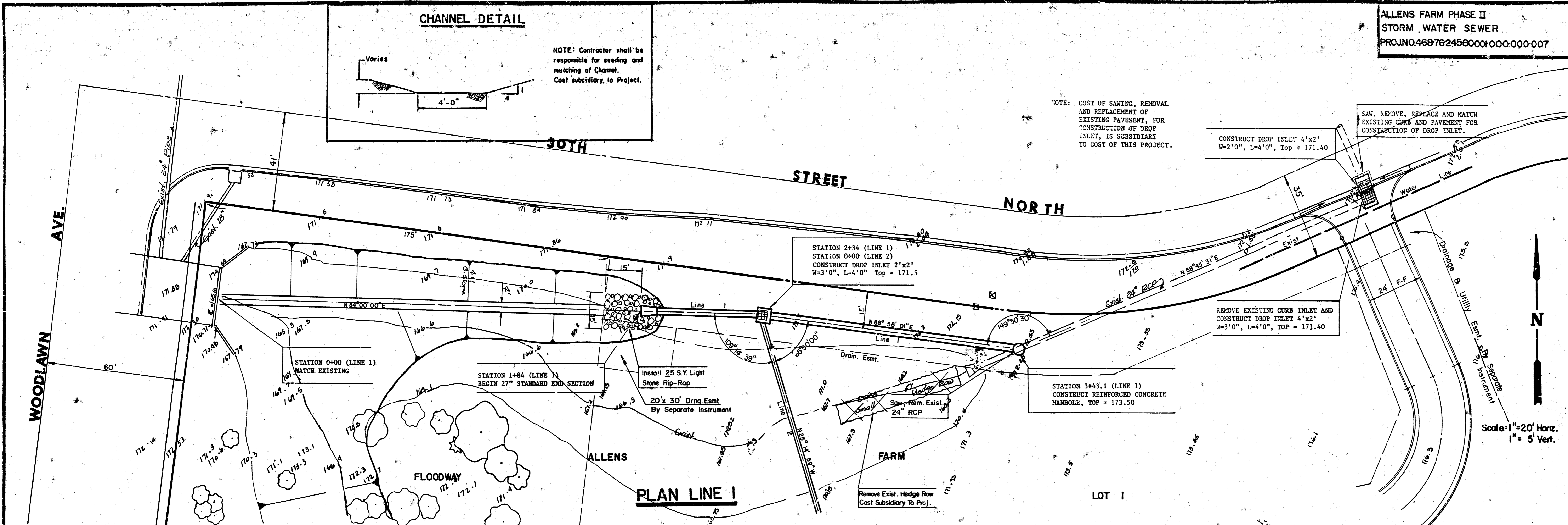
STATION 3+43.1 (LINE 1)
CONSTRUCT REINFORCED CONCRETE MANHOLE, TOP = 173.50

STATION 2+34 (LINE 1)
STATION 0+00 (LINE 2)
CONSTRUCT DROP INLET 2'x2' W=3'0", L=4'0" Top = 171.5

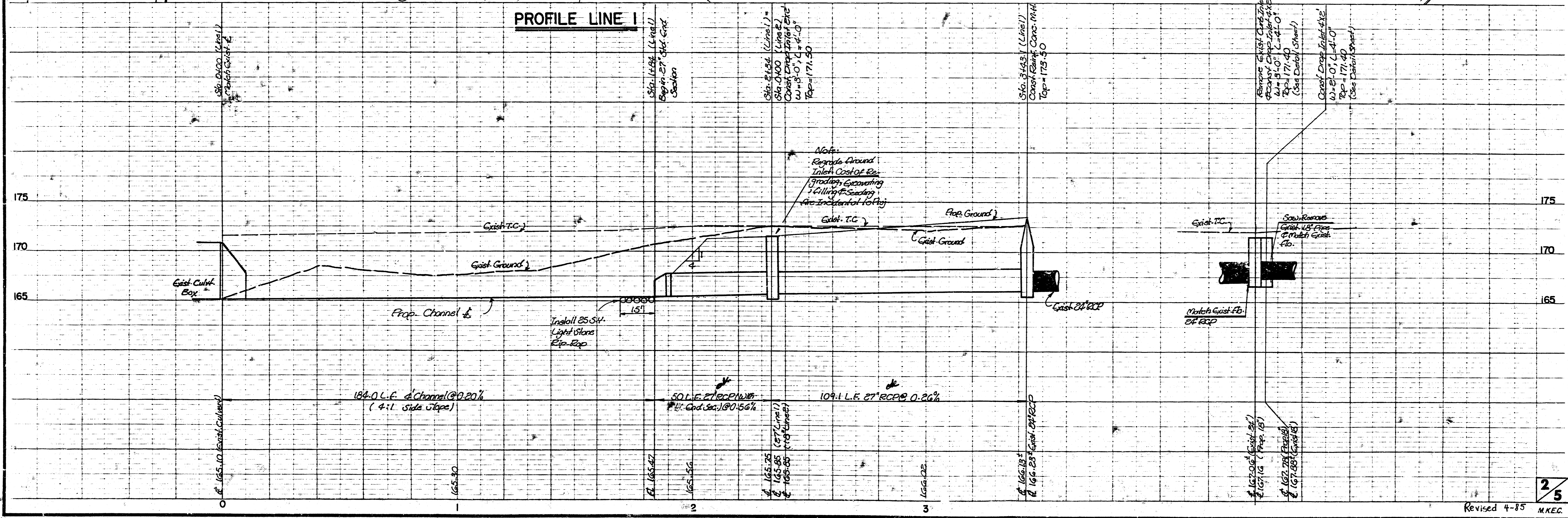
STATION 0+00 (LINE 1)
MATCH EXISTING

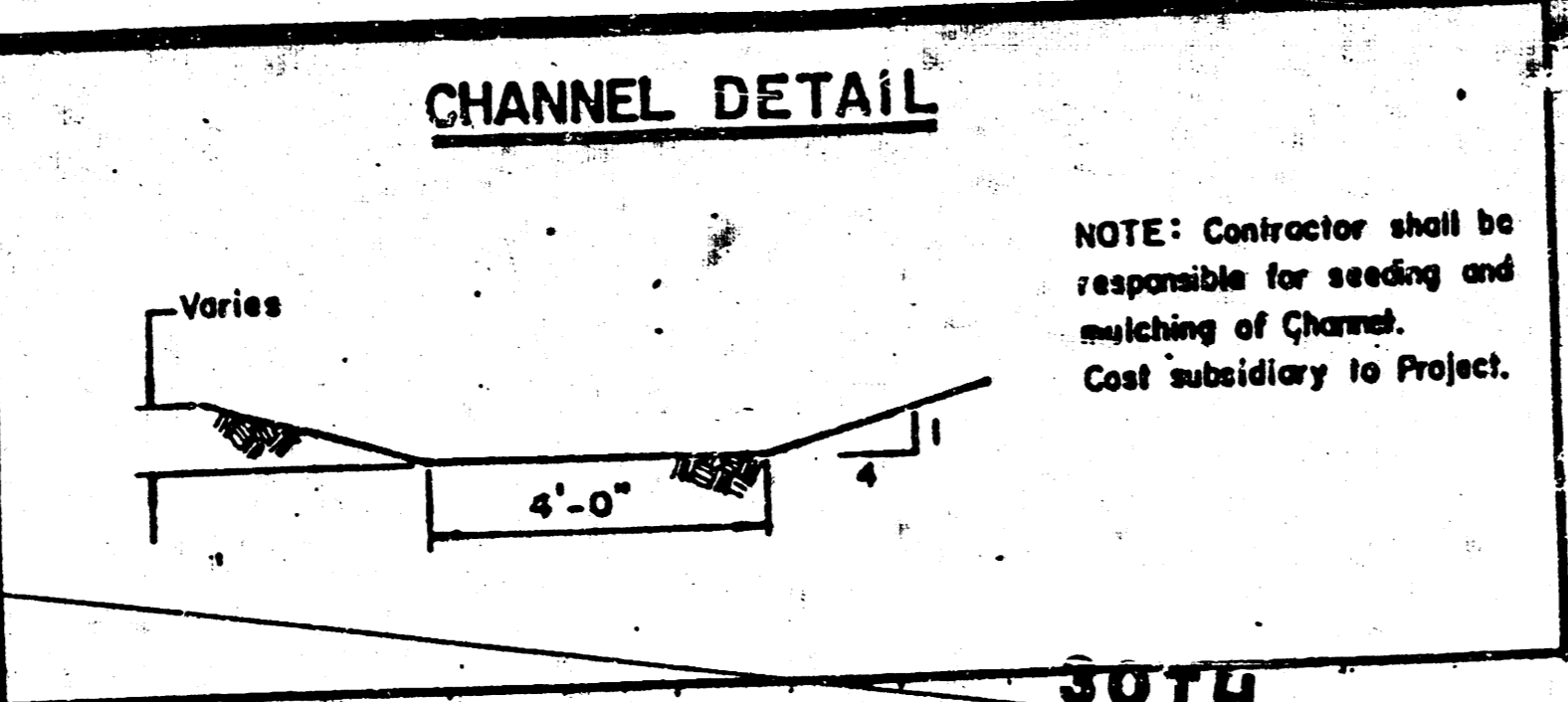
STATION 1+84 (LINE 1)
BEGIN 27" STANDARD END SECTION

PLAN LINE I



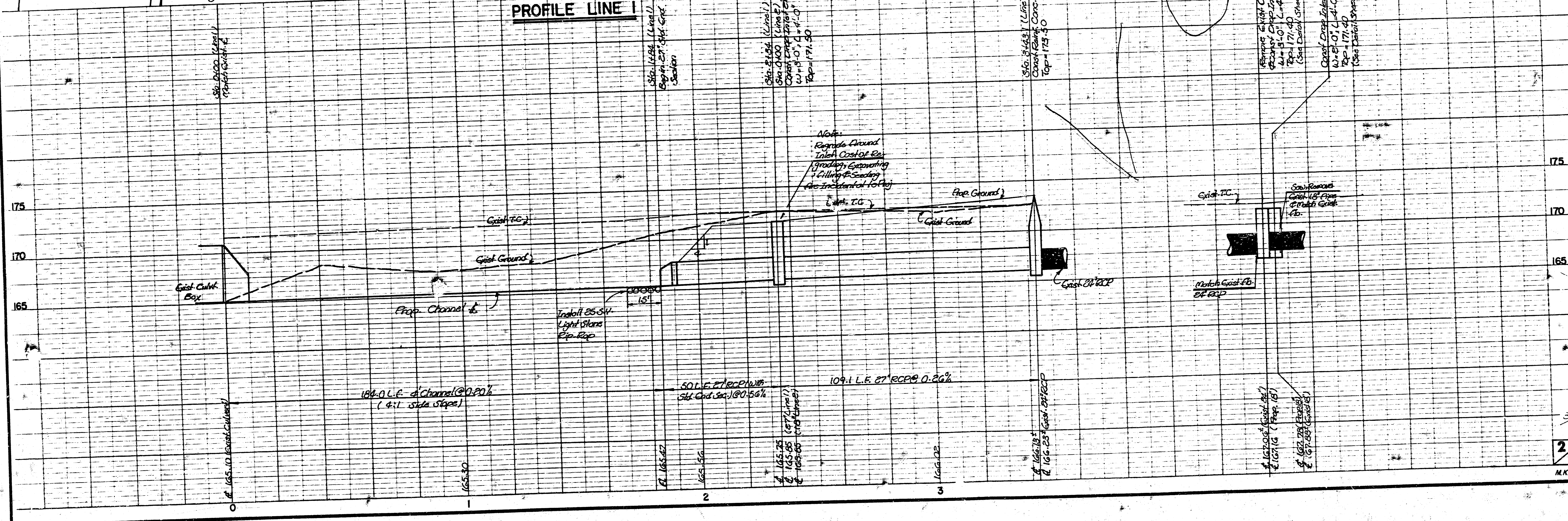
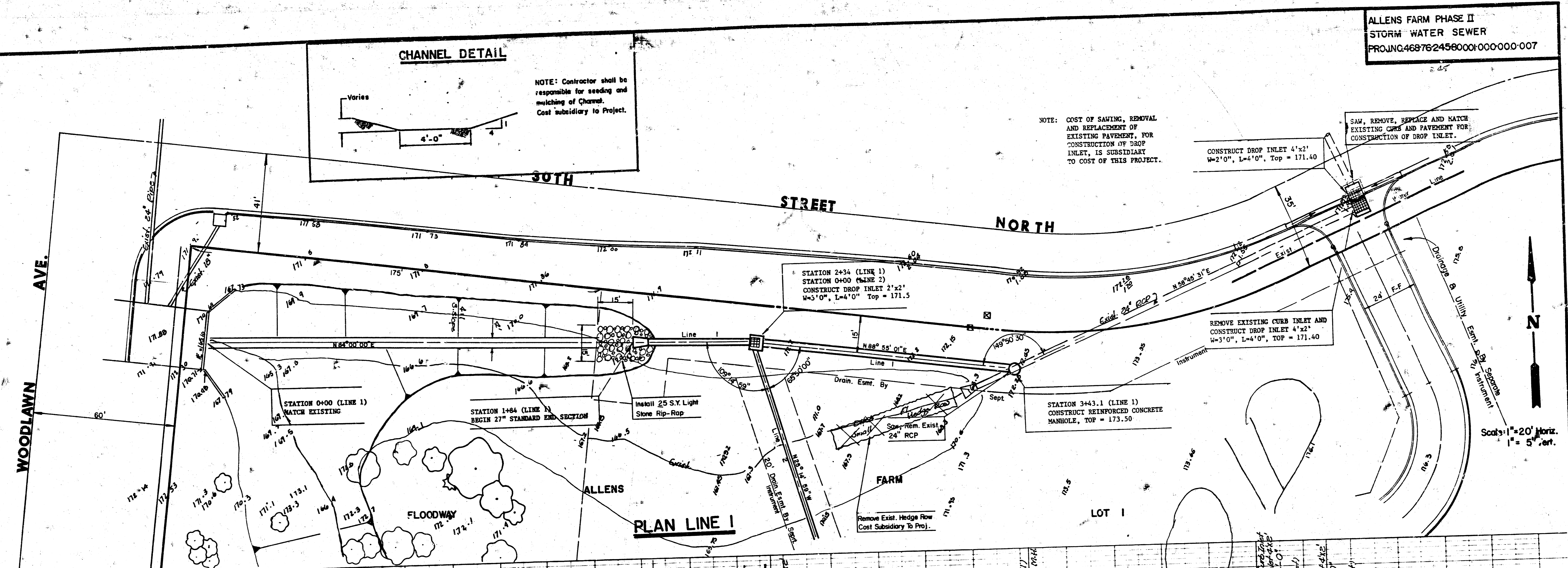
PROFILE LINE I

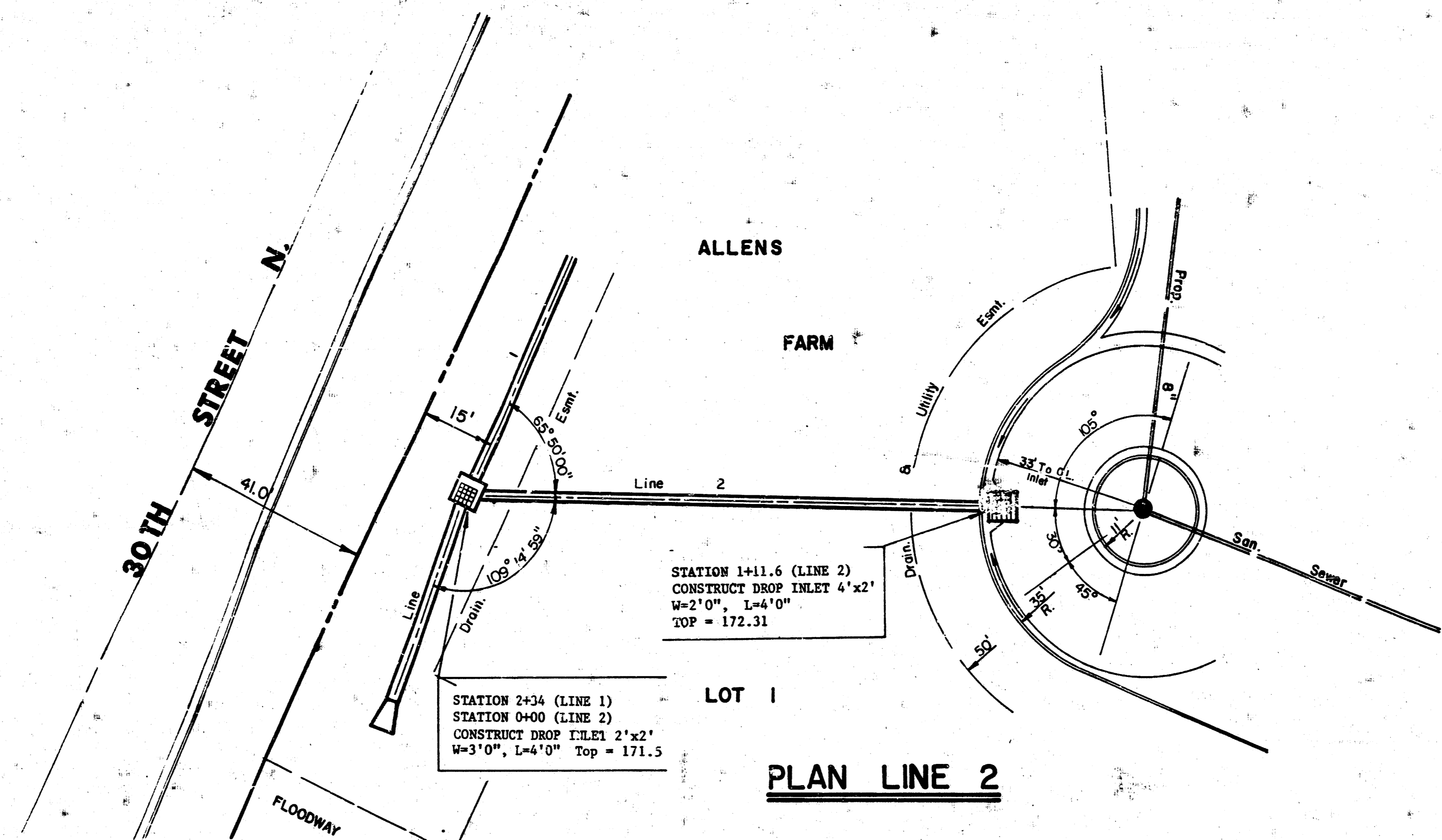
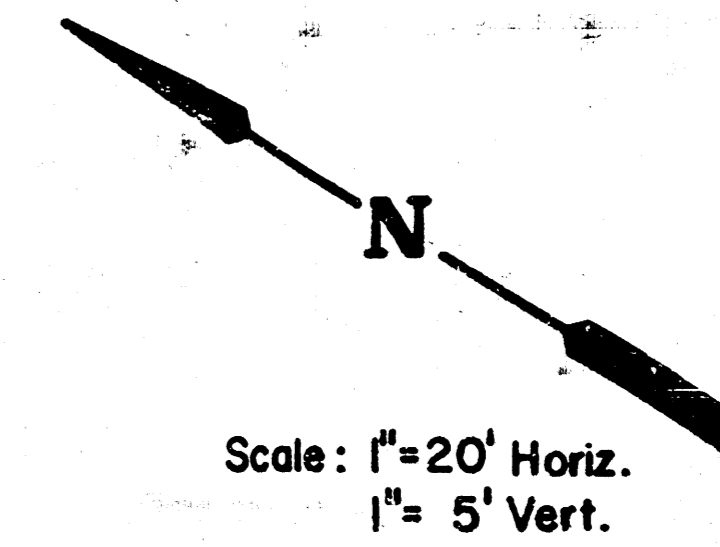




NOTE: COST OF SAWING, REMOVAL AND REPLACEMENT OF EXISTING PAVEMENT, FOR CONSTRUCTION OF DROP INLET, IS SUBSIDIARY TO COST OF THIS PROJECT.

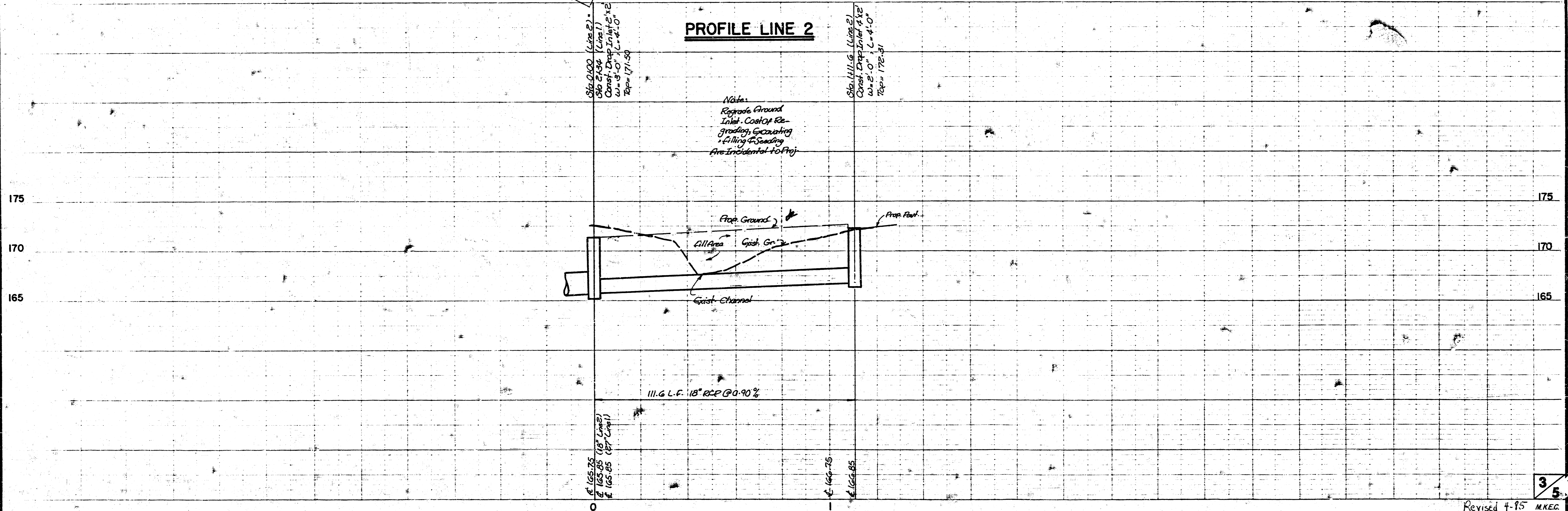
SAW, REMOVE, REPLACE AND MATCH EXISTING CURBS AND PAVEMENT FOR CONSTRUCTION OF DROP INLET.

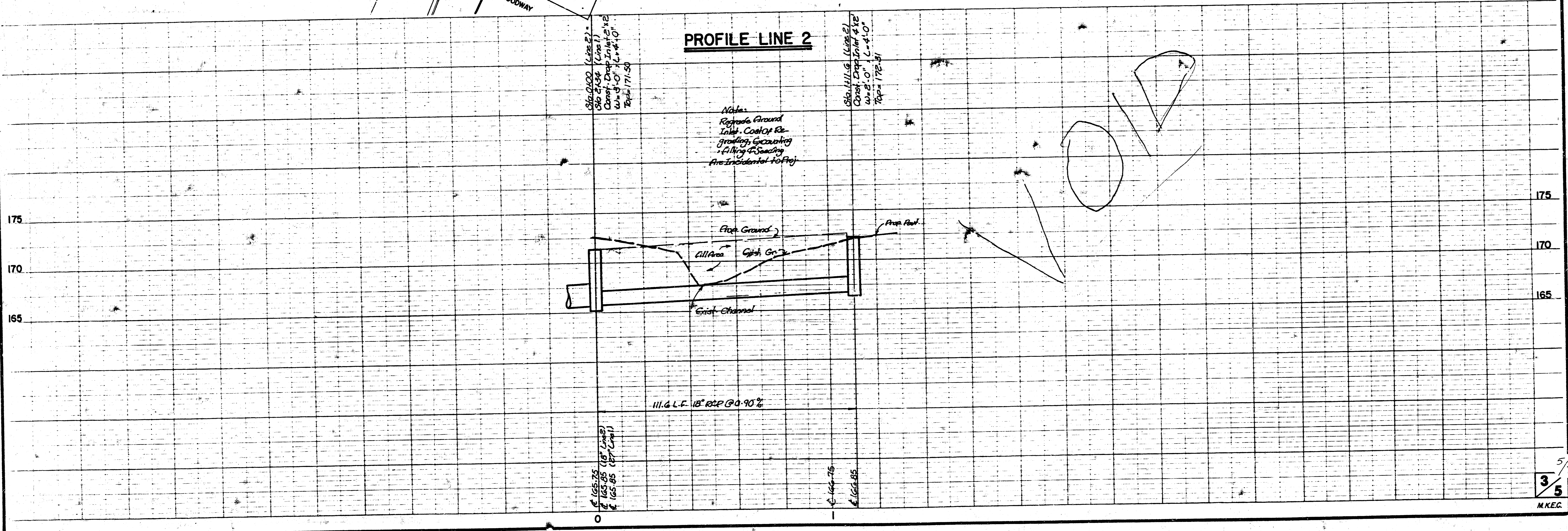
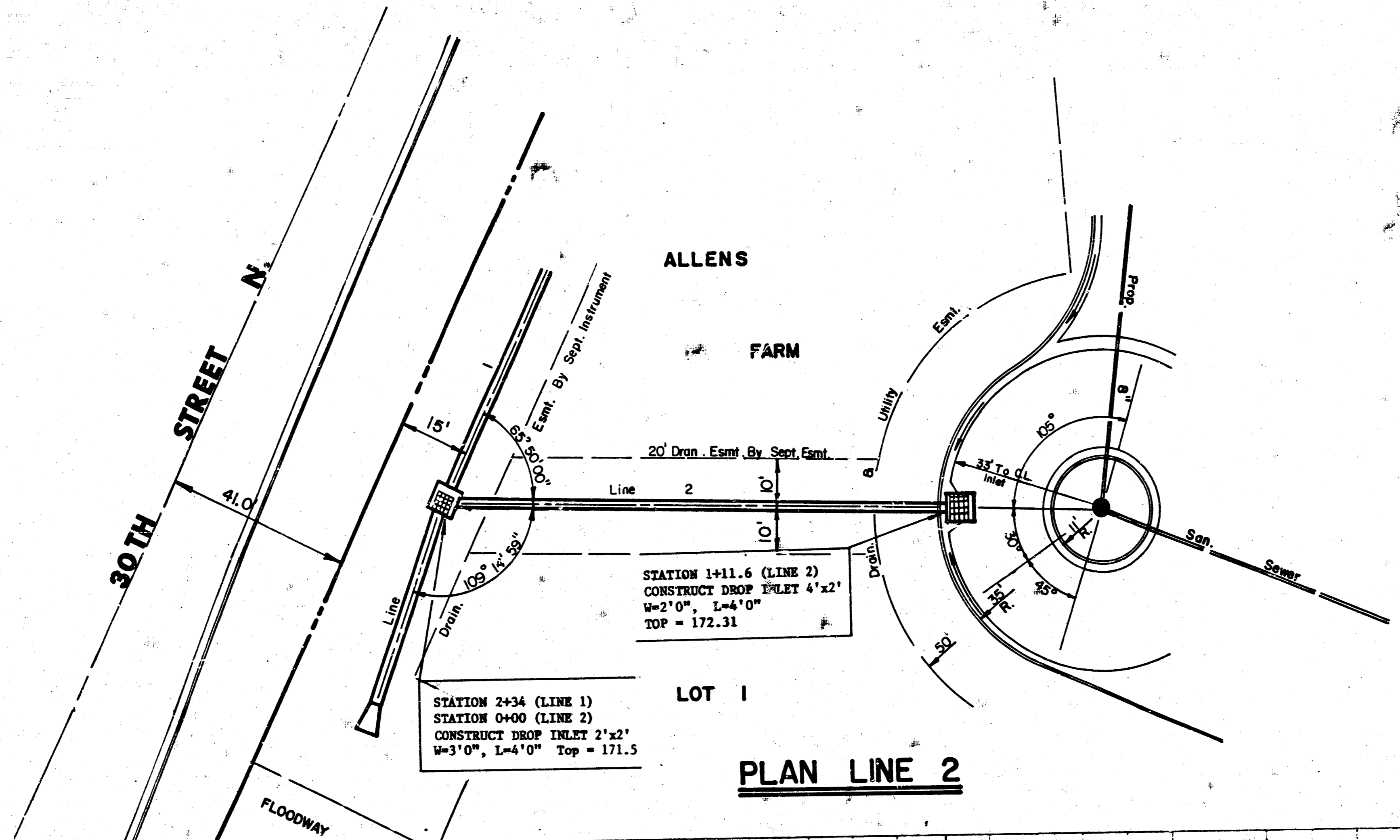
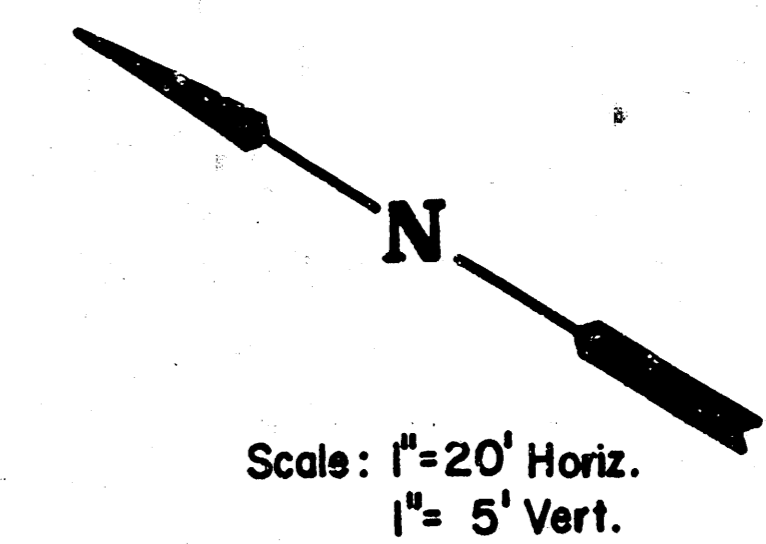




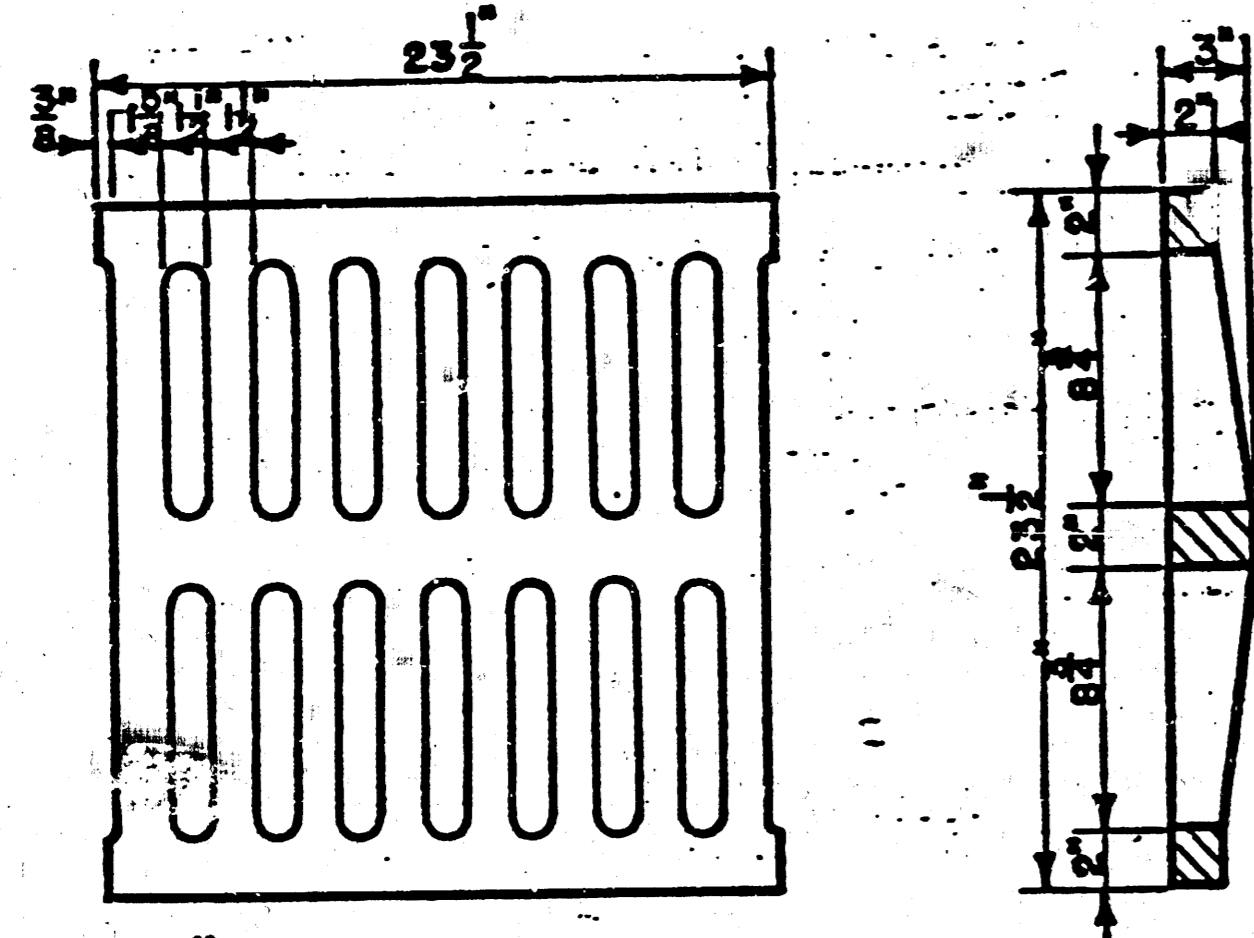
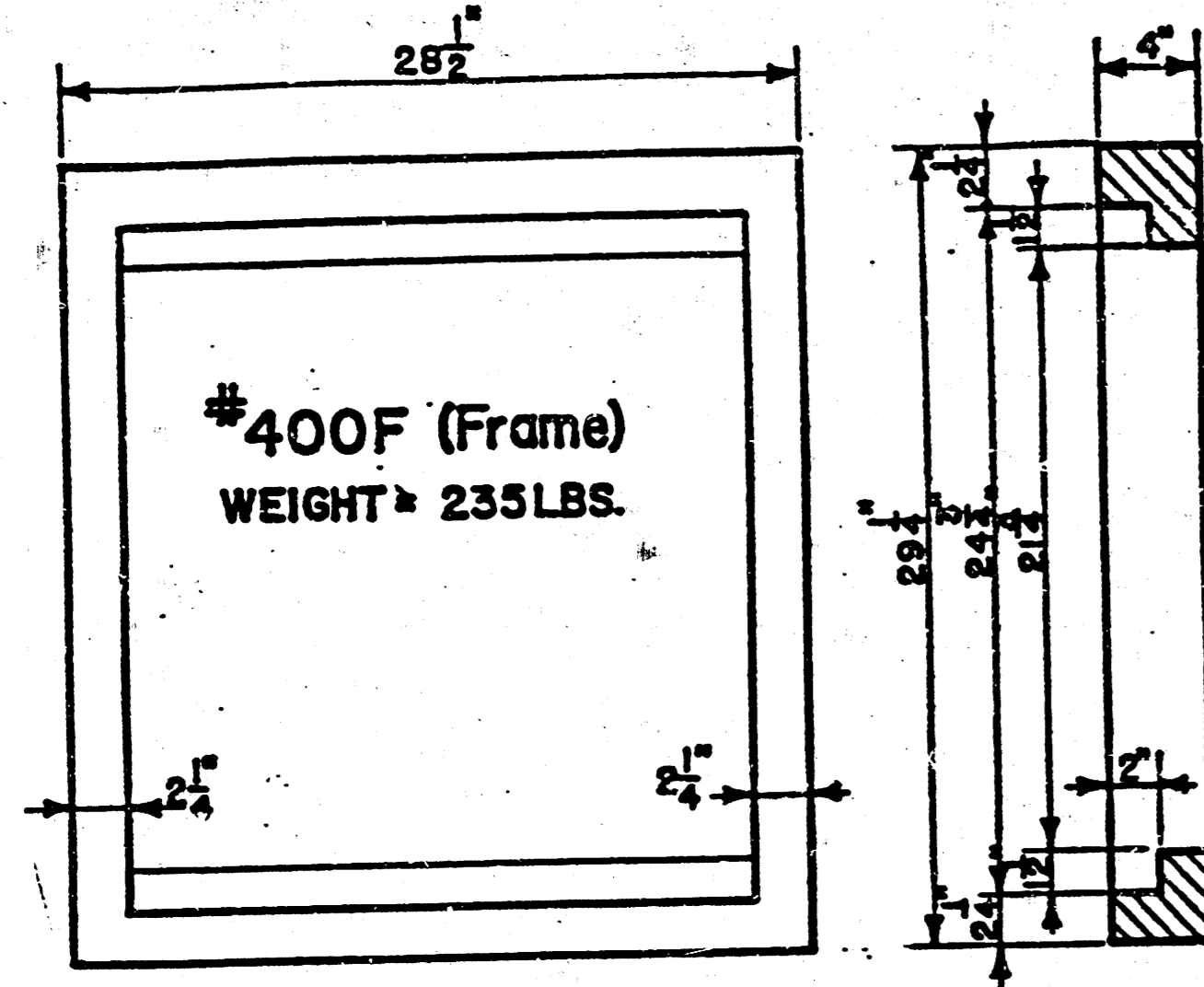
PLAN LINE 2

PROFILE LINE 2



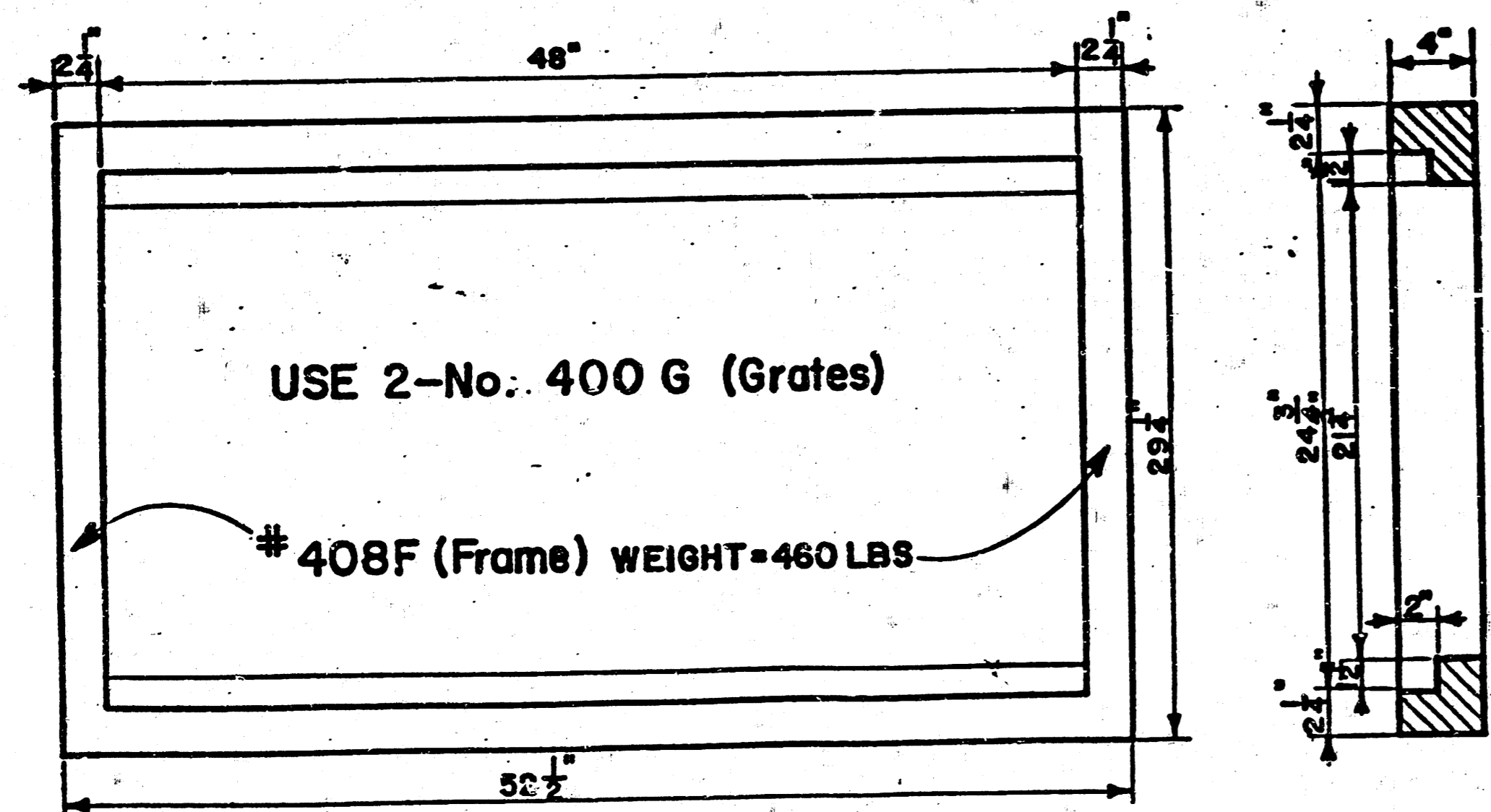


NOTE: Grates shall be imprinted on the top surface with "CITY OF WICHITA" using letters at least 1" in height. Other marking methods may be used only if approved by the engineer.

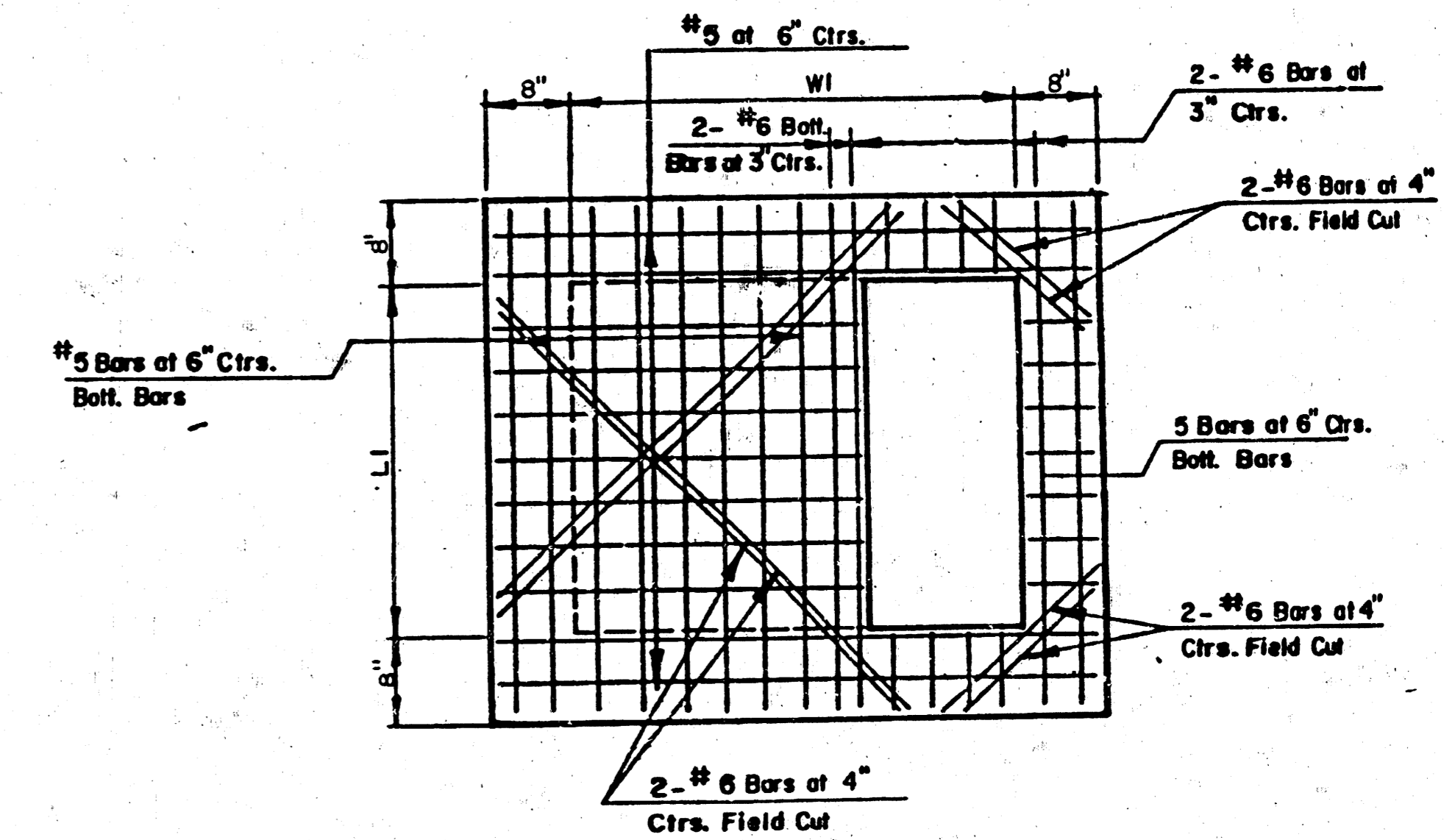
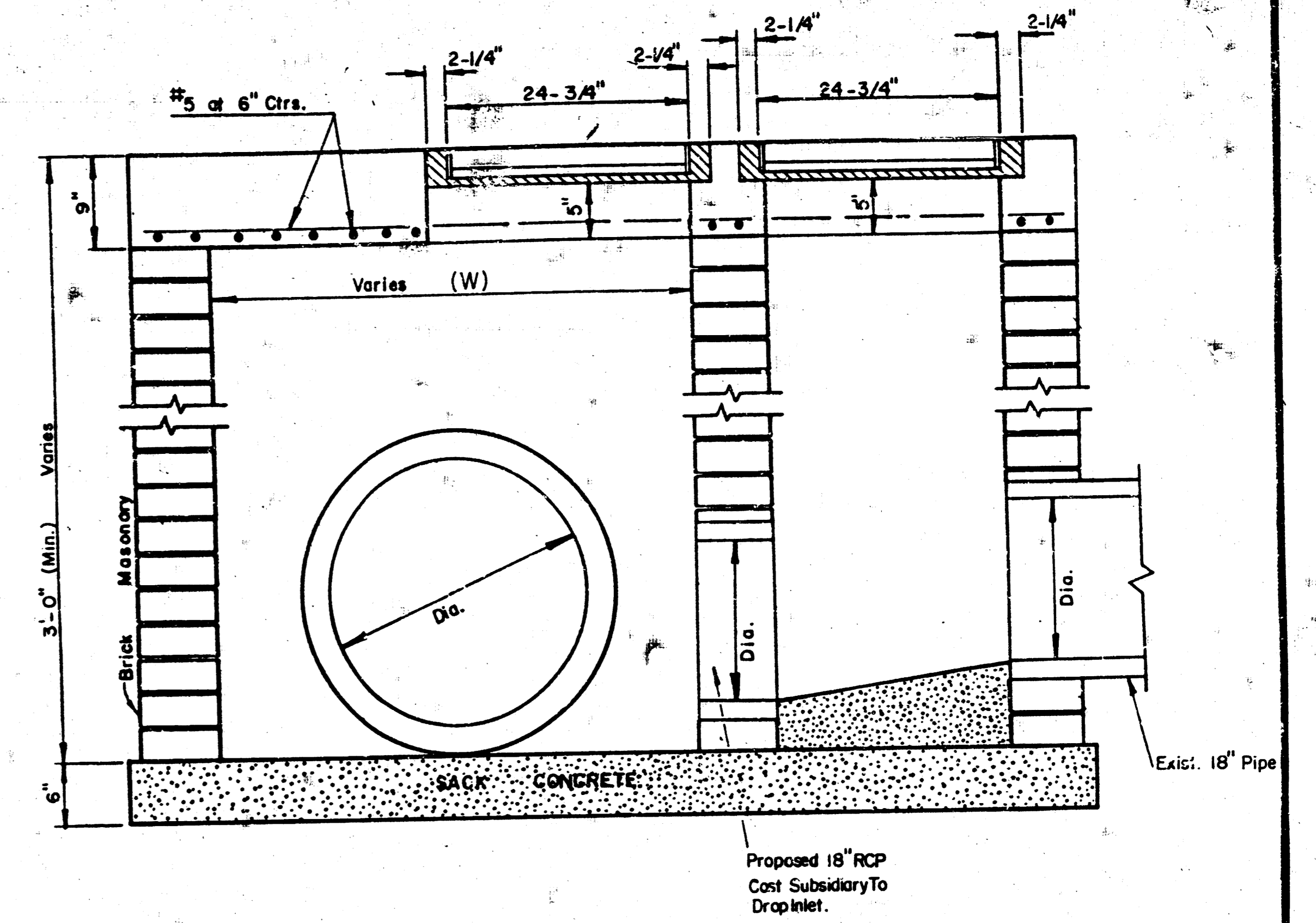
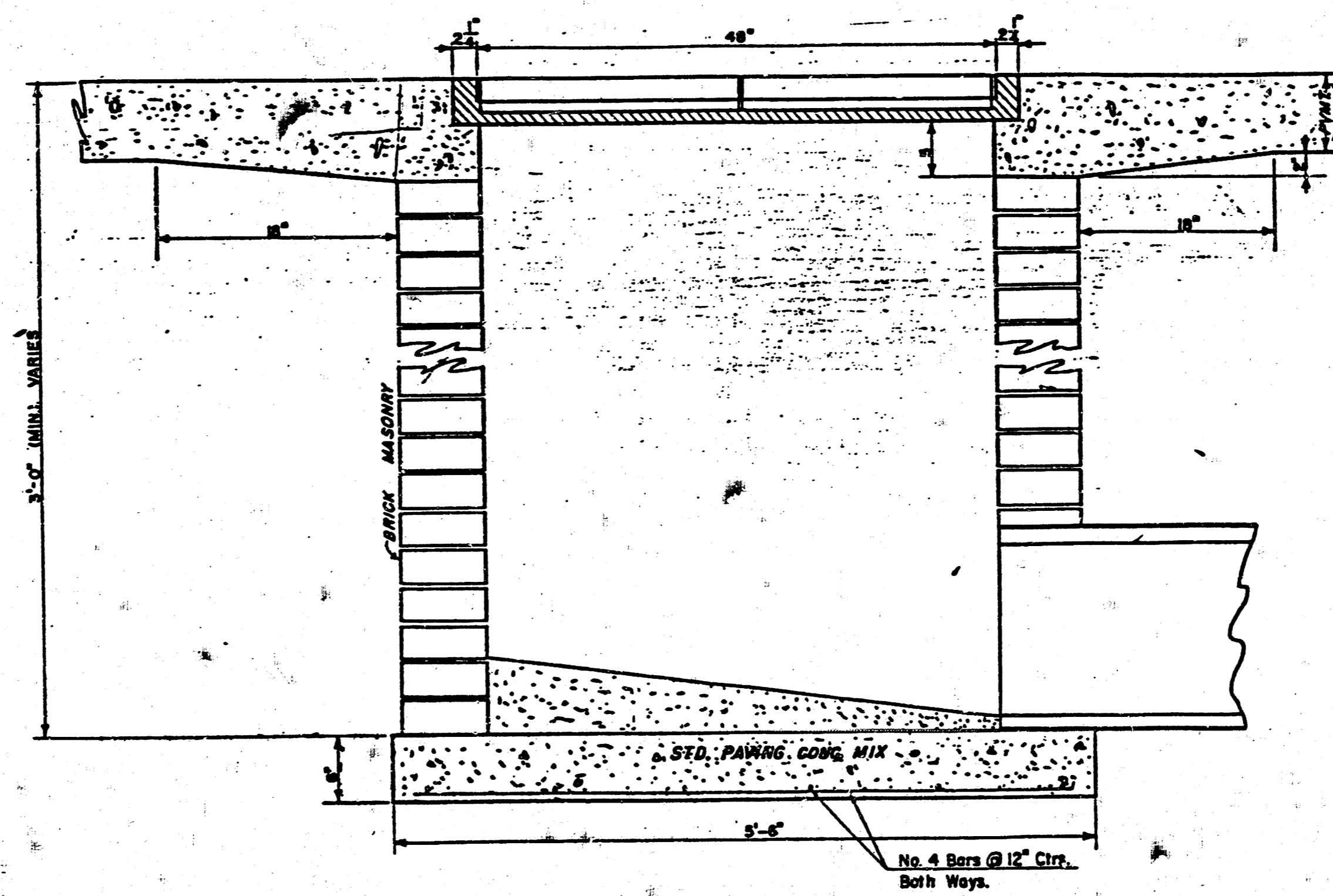
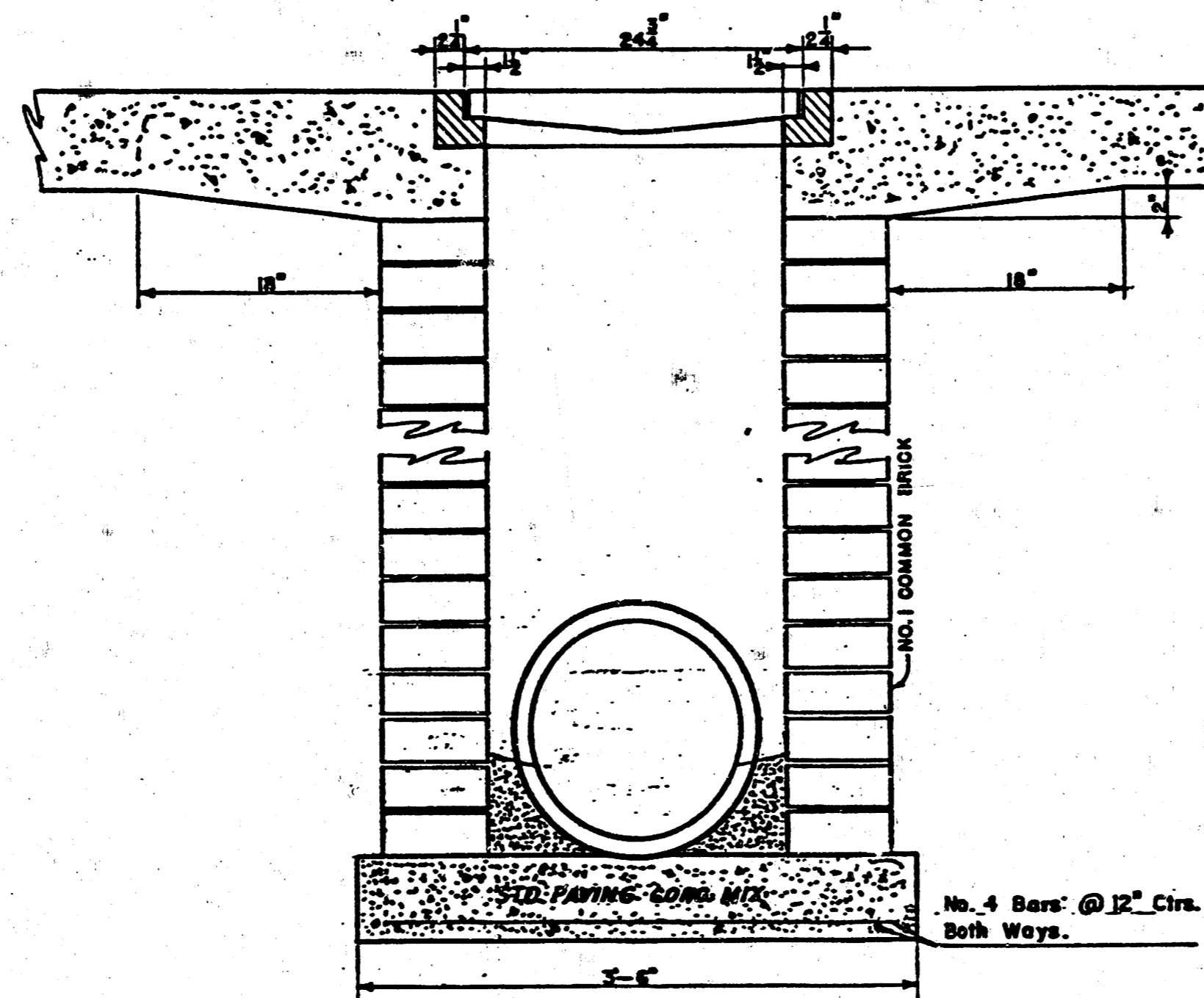
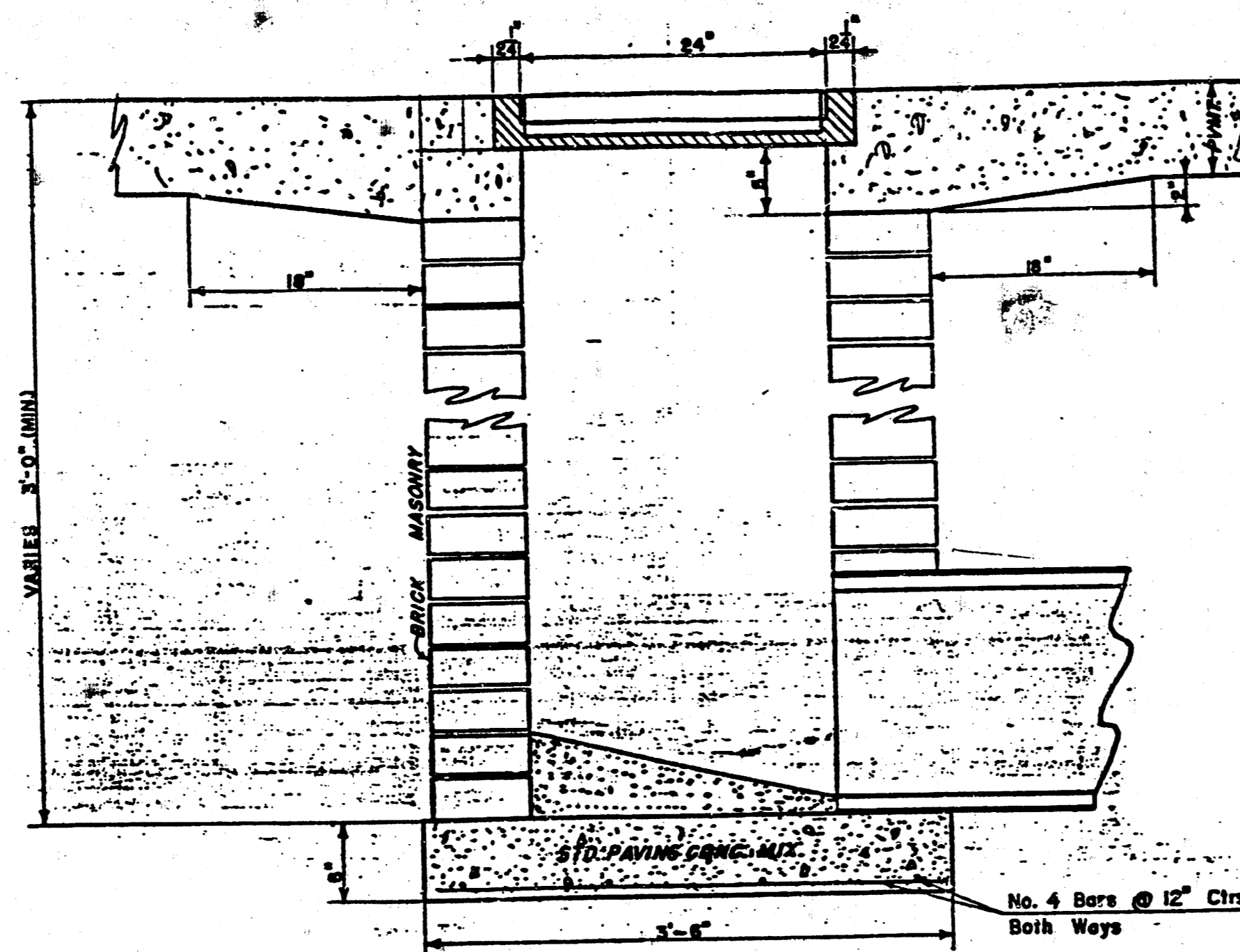


400G (Grate)
WEIGHT = 235LBS

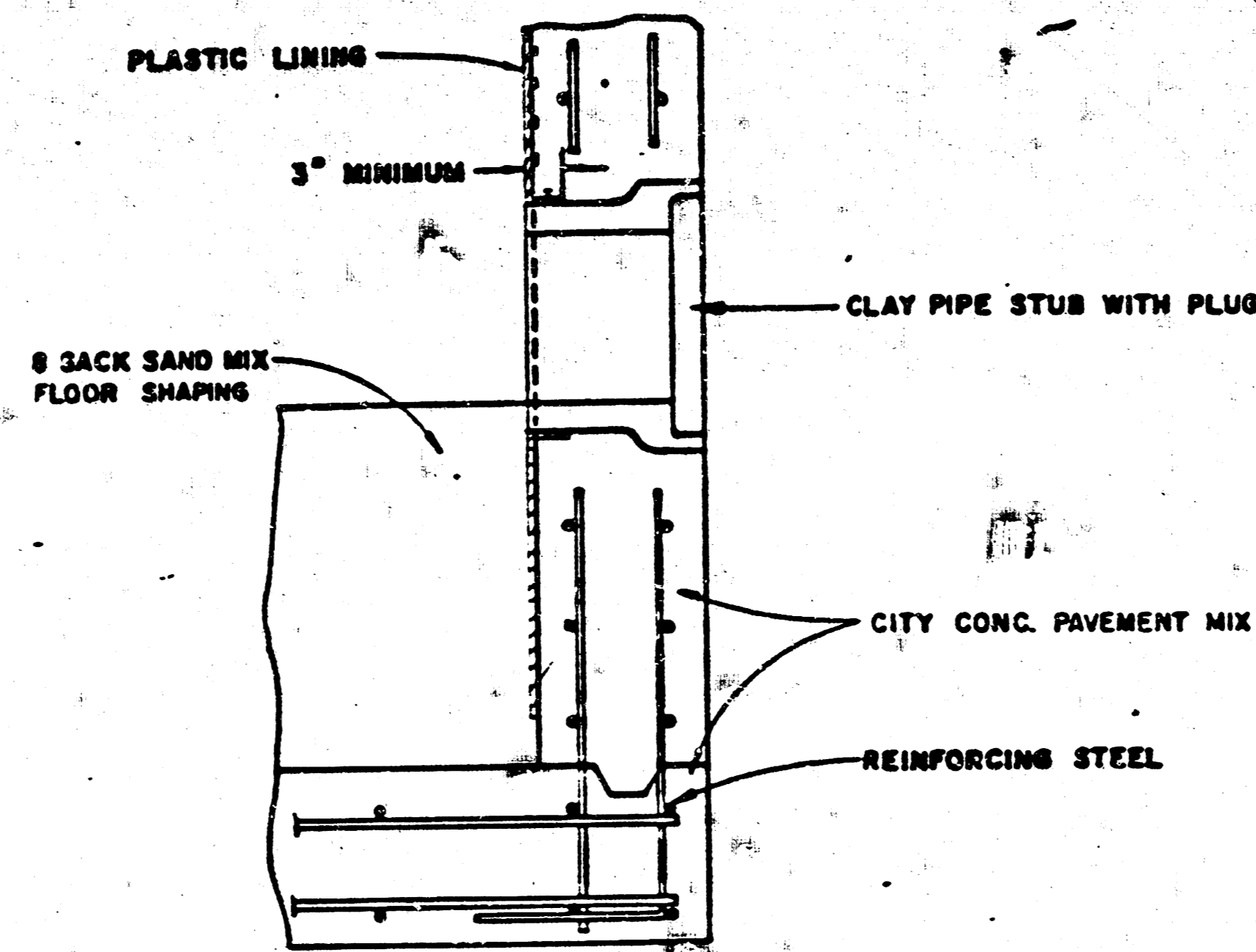
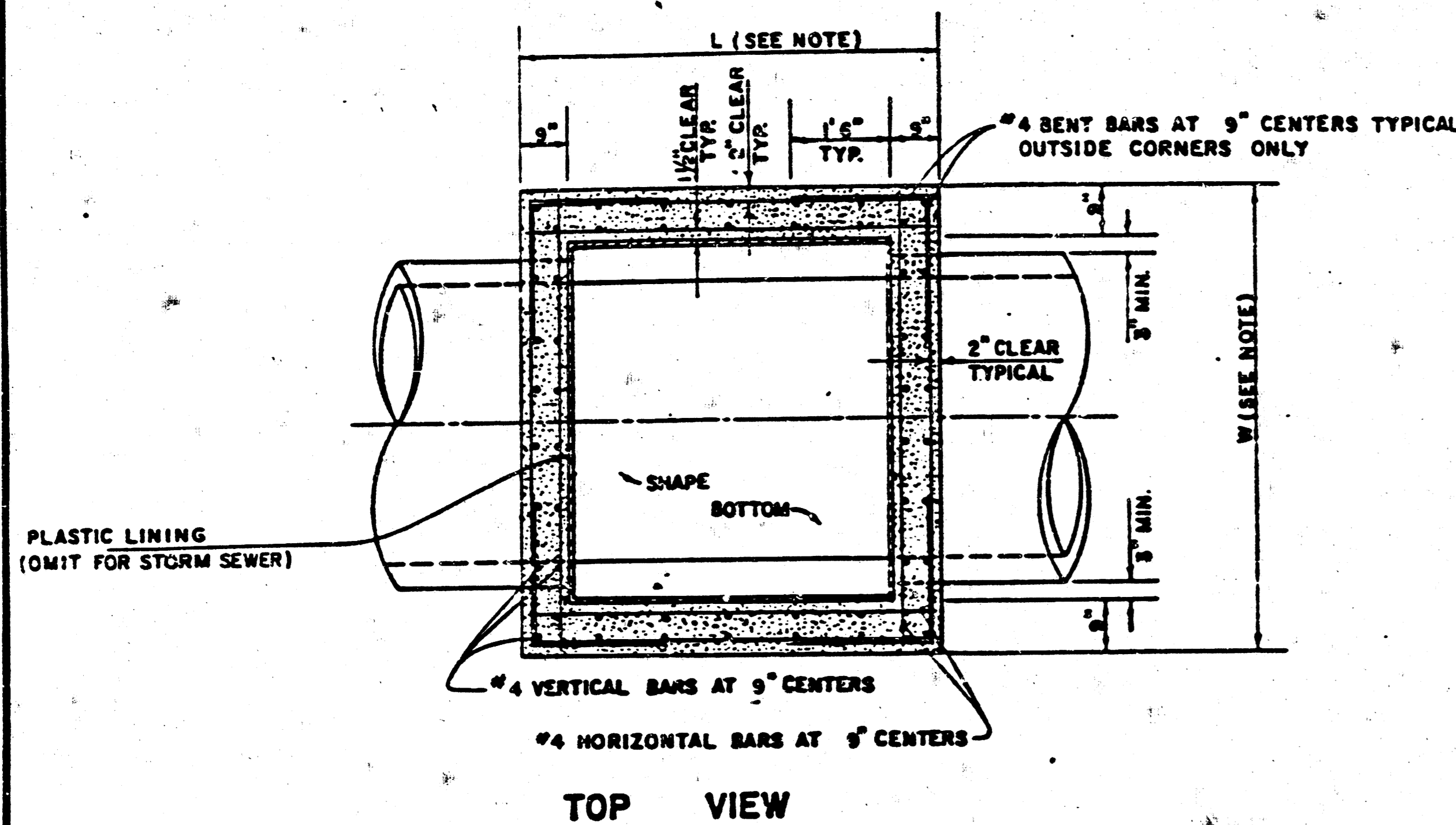
24"x24" Frame & Grate Detail



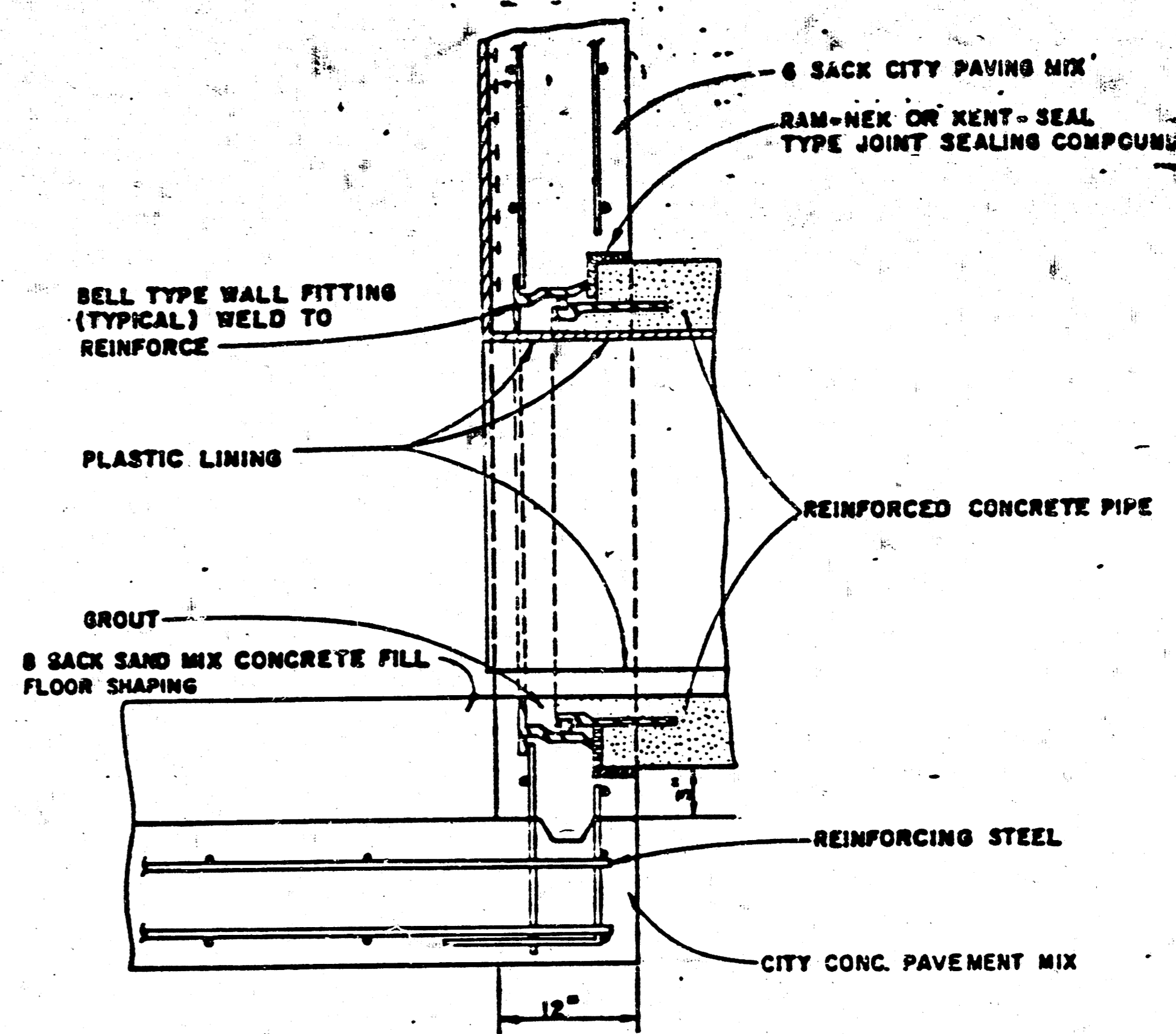
Double 24"x24" Frame Detail



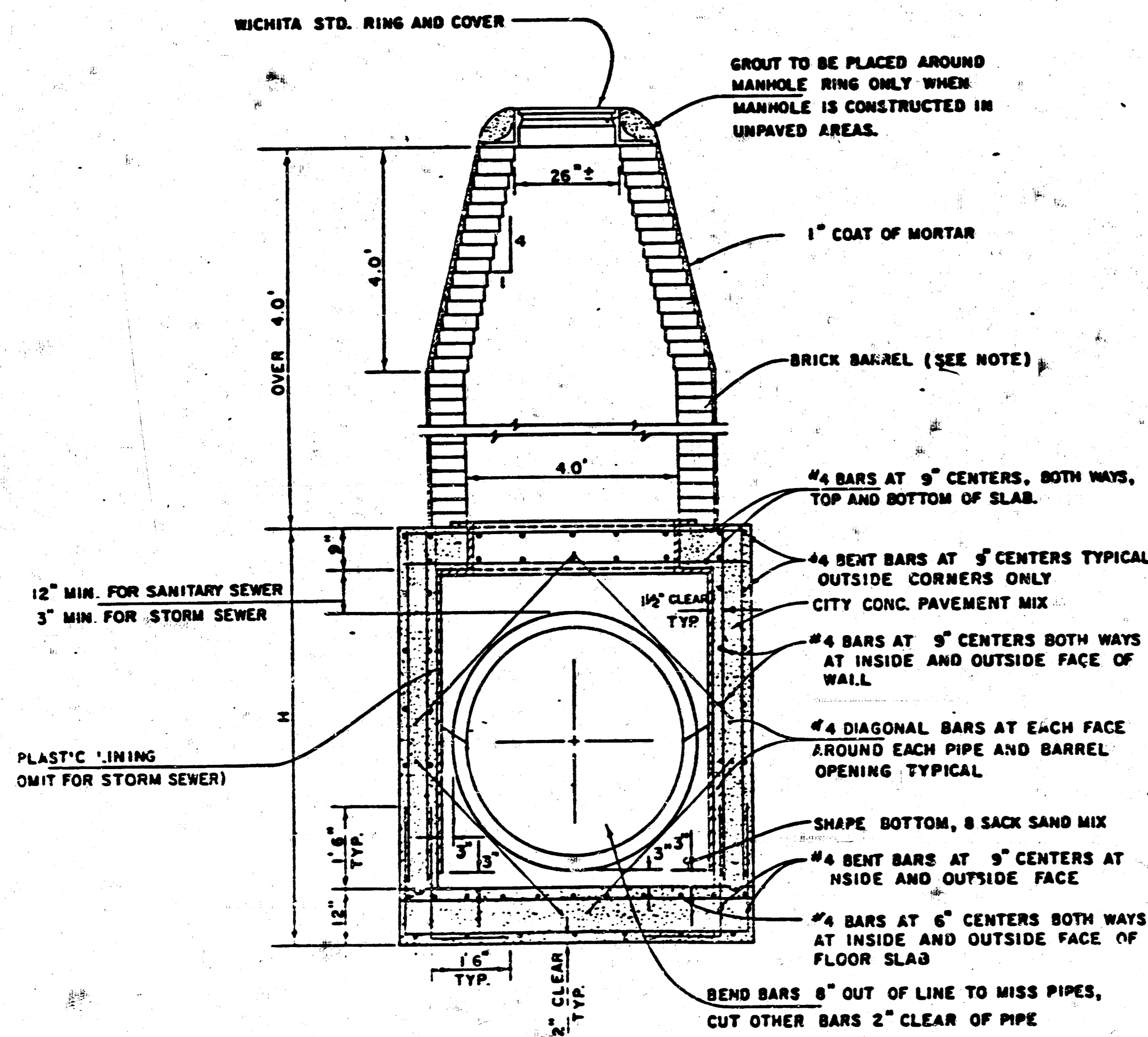
| | | | | | |
|--|-----------------------------------|----------|--|----|---|
| | DROP INLET DETAILS | | Design | | |
| | CITY OF WICHITA, KS. | | Drawn by | | |
| | PROJ. INQ. 4687624580001-00000007 | | Checked by | | |
| | | | Date | | |
| MID-KANSAS ENGINEERING CONSULTANTS PA 3500 NORTH ROCK ROAD WICHITA, KANSAS 67226 | | 682-6561 | <table border="1"> <tr> <td>4A</td> </tr> <tr> <td>5</td> </tr> </table> | 4A | 5 |
| 4A | | | | | |
| 5 | | | | | |



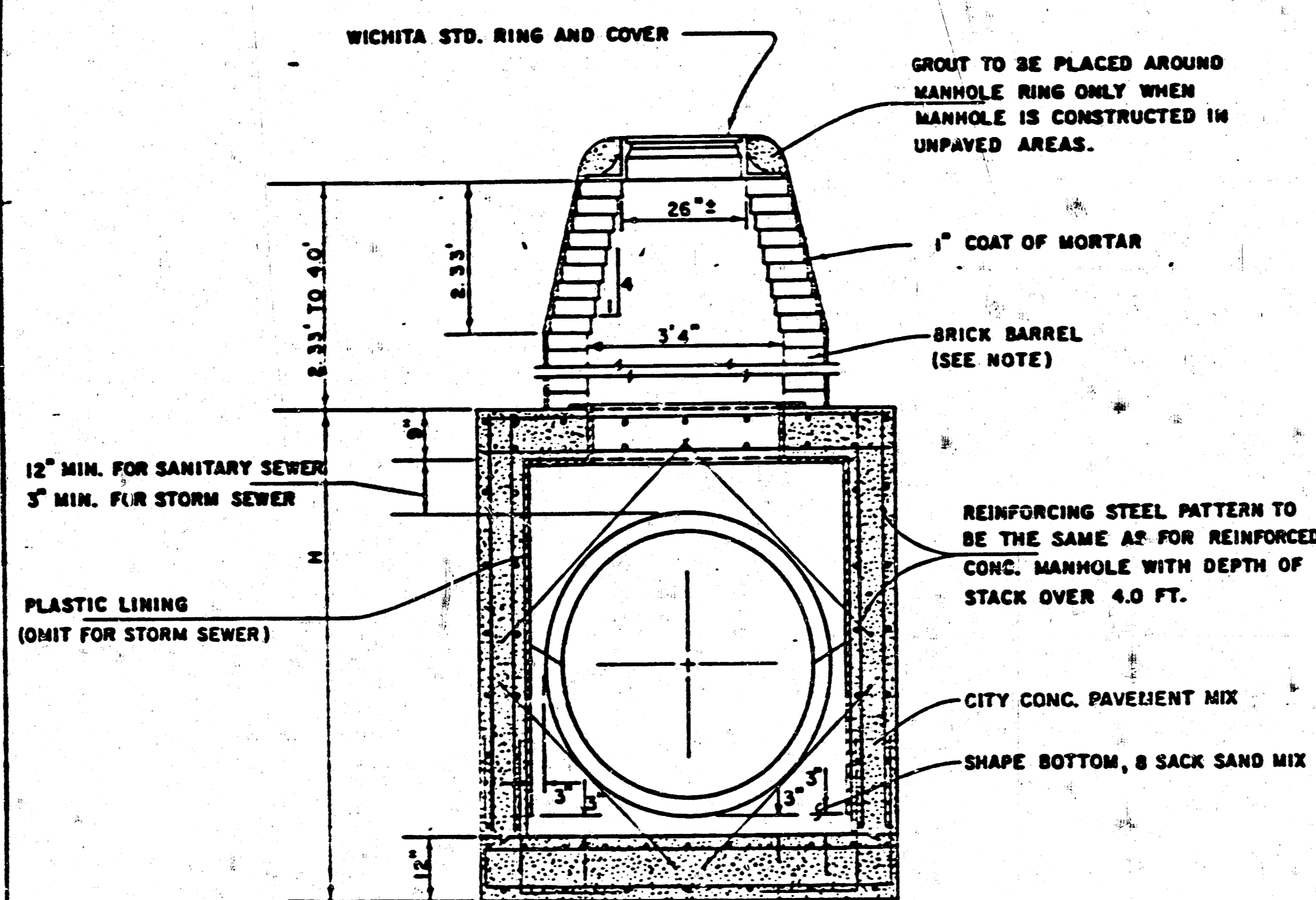
V.C.P. CONNECTION DETAIL
SANITARY SEWER ONLY



R.C.P. CONNECTION DETAIL
SANITARY SEWER ONLY

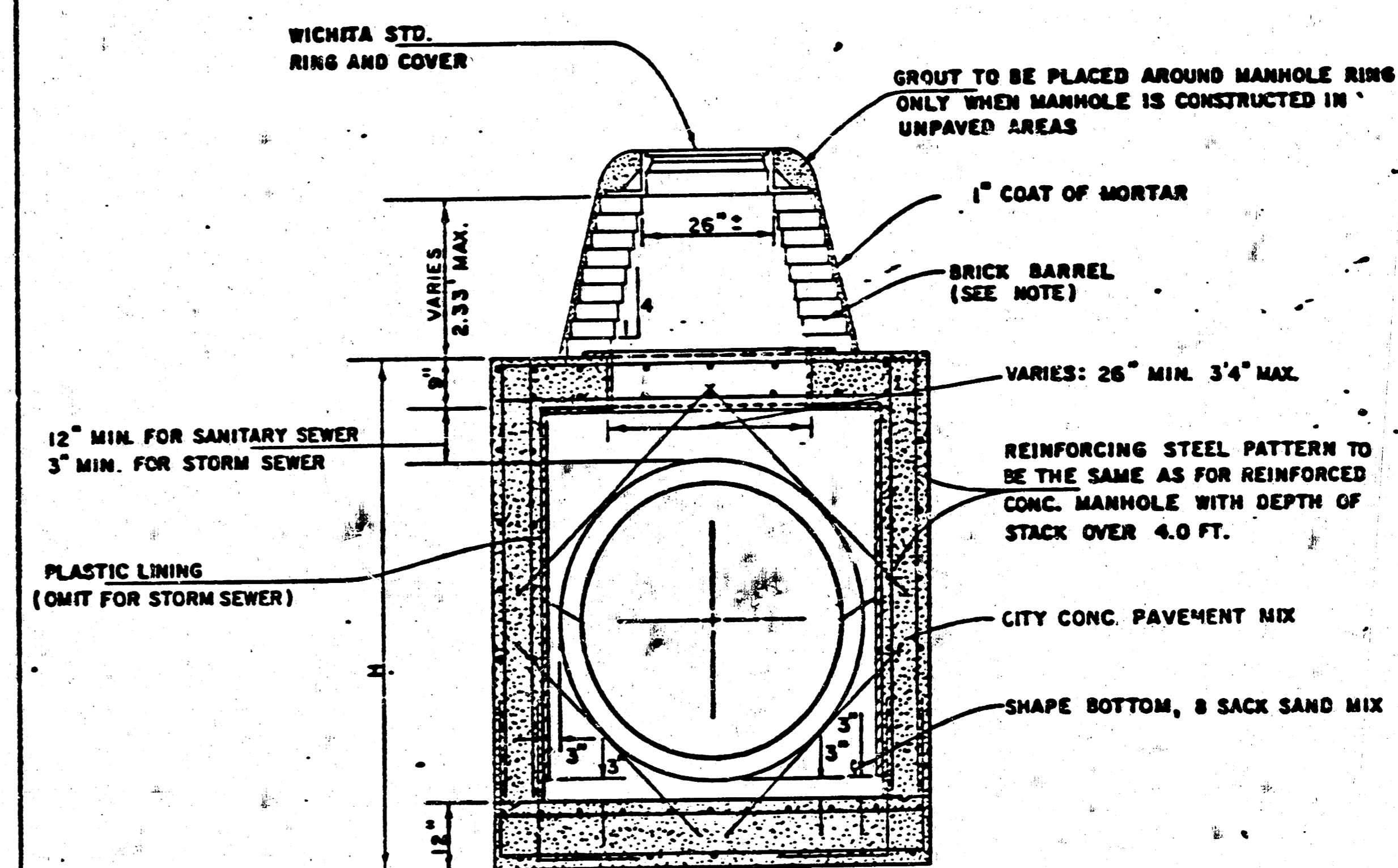


REINFORCED CONCRETE MANHOLE
DEPTH OF STACK: OVER 4.0'
SCALE 1" = 2'



REINFORCED CONCRETE MANHOLE
DEPTH OF STACK: 2.33' TO 4.0'
SCALE 1" = 2'

NOTE:
BRICK BARRELS LESS THAN 16' DEEP SHALL HAVE 8" WALLS EXCEPT WHEN LOCATED WITHIN PUBLIC STREET OR ALLEY PAVEMENT THEN THE WALL SHALL BE 12". BRICK BARRELS MORE THAN 16' DEEP SHALL HAVE 12" WALLS. THE "L" AND "W" DIMENSIONS SHALL BE A MINIMUM OF 5'6" FOR BRICK BARRELS WITH 8" WALLS AND 6'2" FOR BRICK BARRELS WITH 12" WALLS WHEN THE BRICK BARRELS ARE OVER 4 FT. IN HEIGHT.



REINFORCED CONCRETE MANHOLE
DEPTH OF STACK: 0' TO 2.33'
SCALE 1" = 2'

STANDARD DETAILS
REINFORCED CONCRETE MANHOLES

CITY OF WICHITA
PROJ. NO. 468-76-245-80001-000-000-007
FEBRUARY 1984

