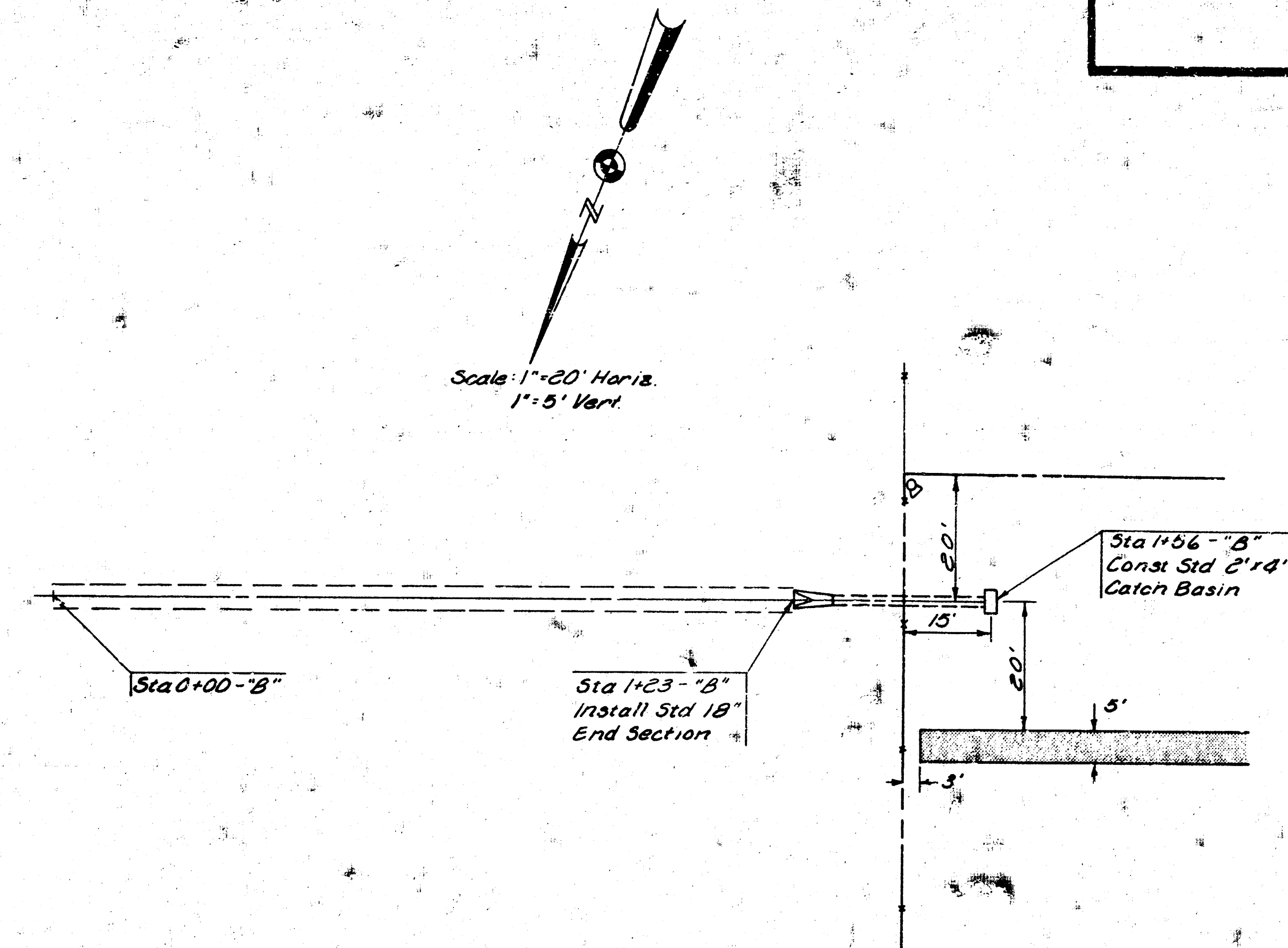
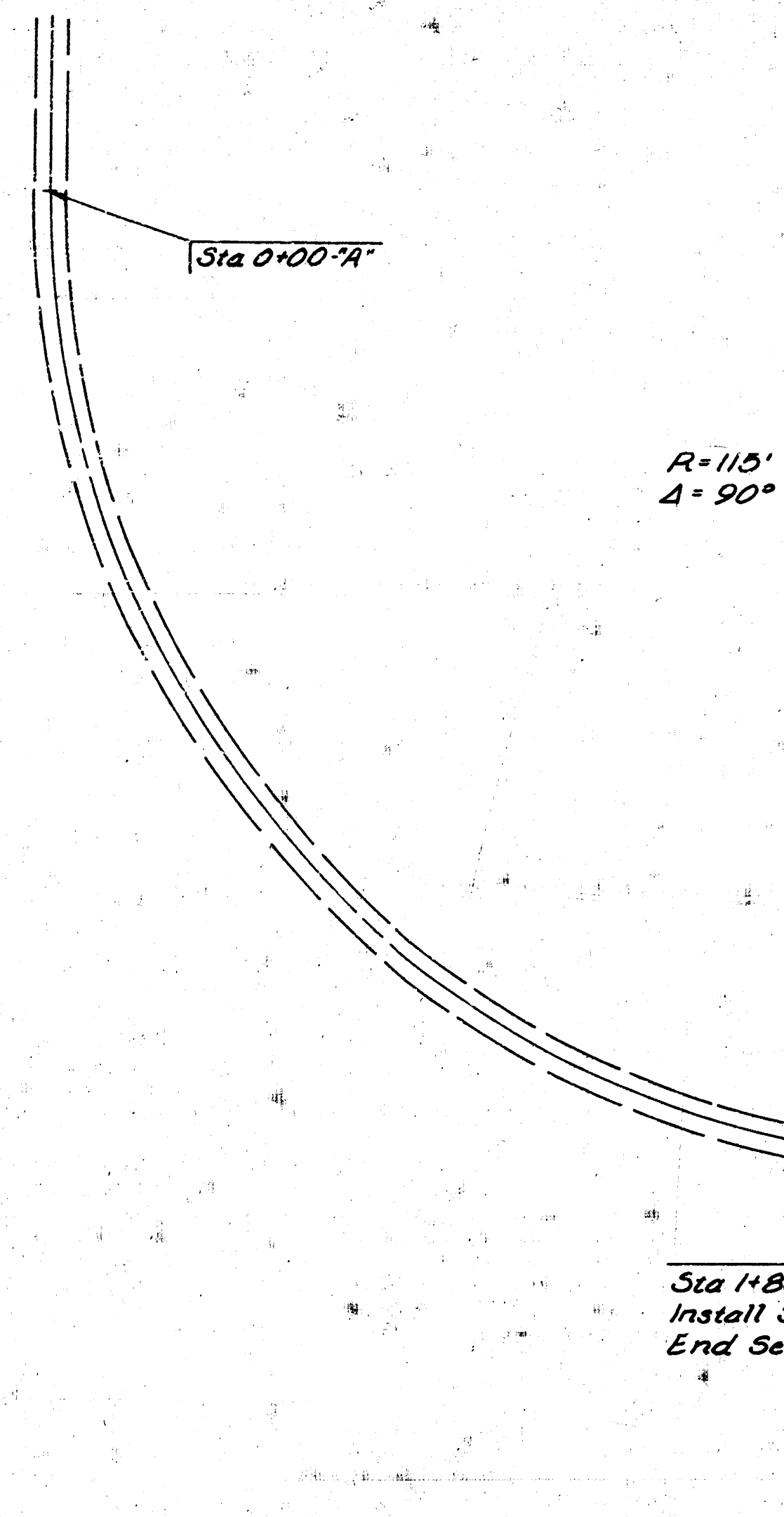
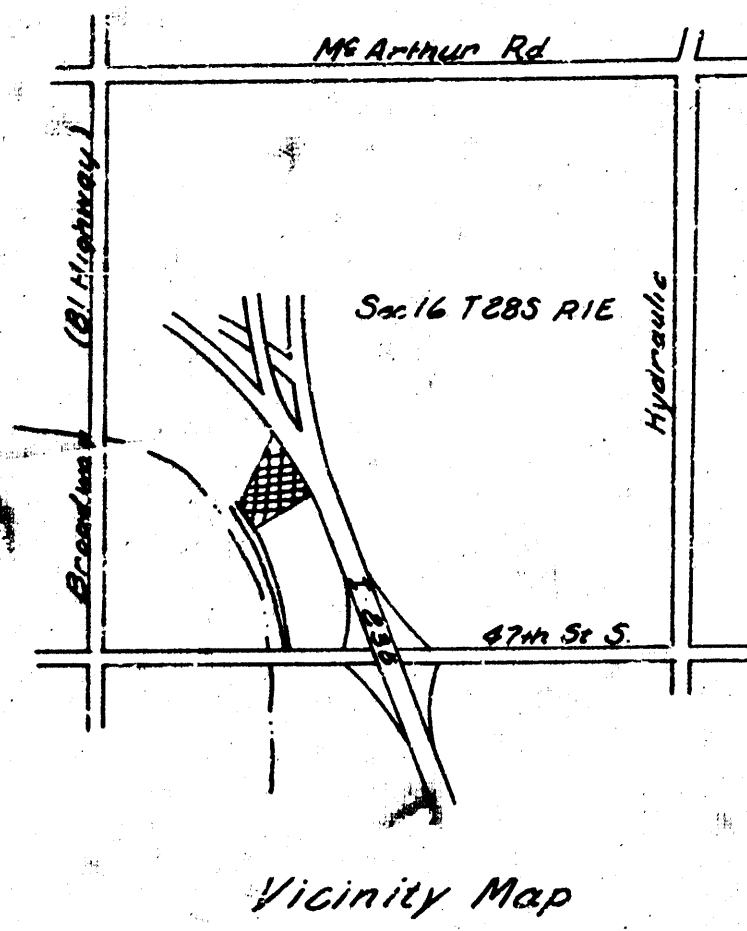


- LEGEND
- PL. BOUNDARY PHASE I
 - EXISTING ELEV. / PROPOSED ELEV.
 - CONCRETE PAVING
 - MERCURY VAPOR FLOODLIGHT ON 30' HINGED POLE
 - DIRECT BURIED, NO. 8 AWG TYPE USE
 - STANDARD 2'x4' CITY AREA INLET
 - STANDARD CURB INLET - TYPE 1A

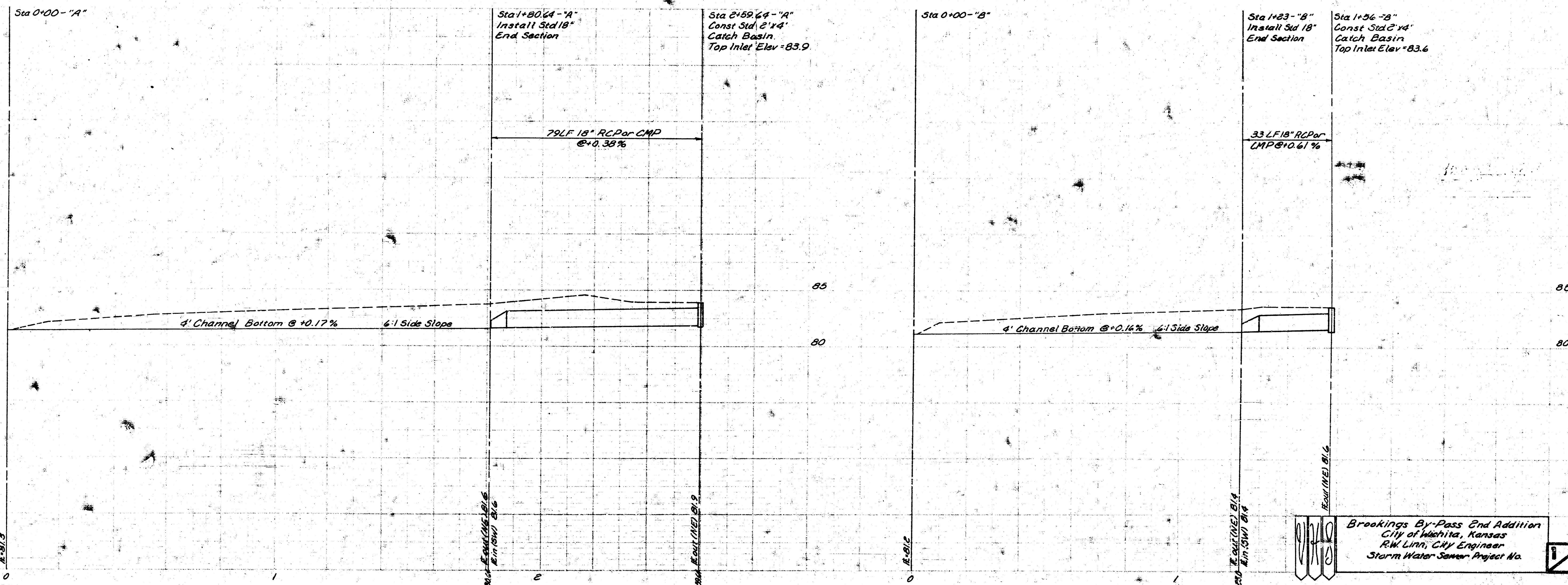
DESIGN KHB	TRUCK TERMINAL BUILDING FOR
DR. BY KRA	THE SANTA FE TRAIL TRANSPORTATION CO.
CK. BY KHB	WICHITA KANSAS
DATE JUNE 78	SITE PLAN
JOB NO. 78-224	VAN DOREN · HAZARD · STALLINGS ARCHITECTS · ENGINEERS · PLANNERS WICHITA, KANSAS
	SHEET C OF 1

Grades Revised - 11-28-78
REVISED 9/7/78

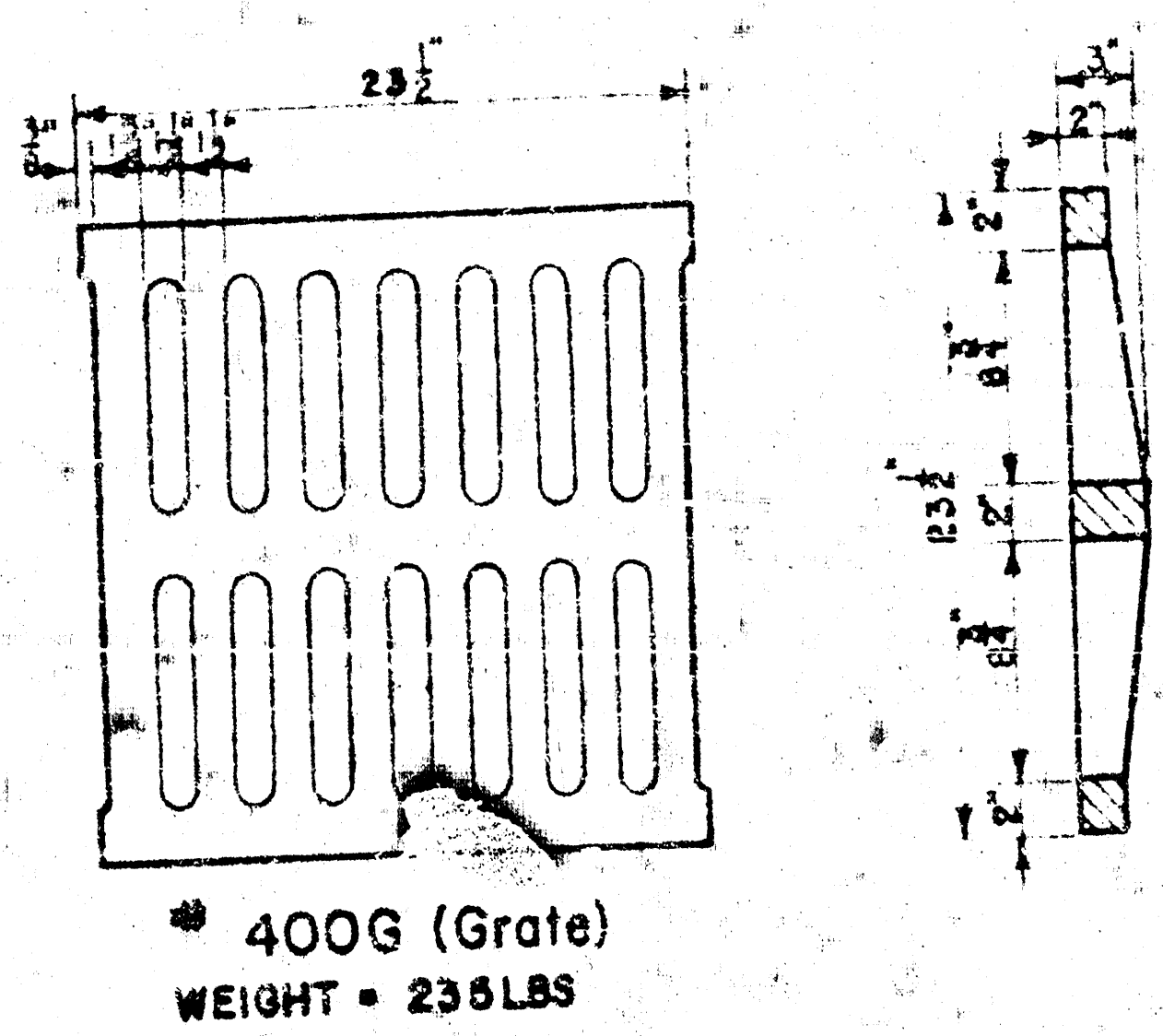
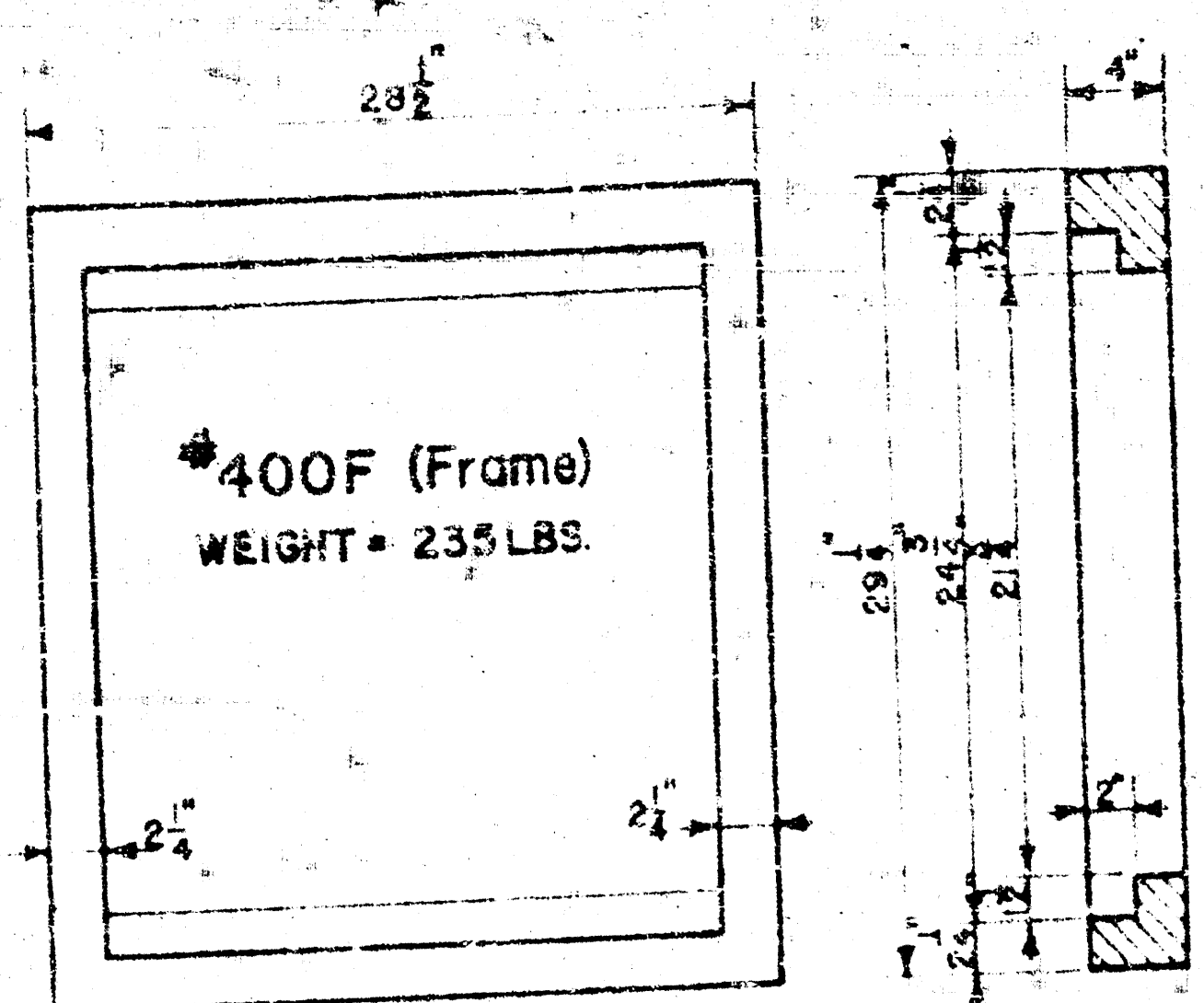


Sta 1+80.64-74' Install Std 18" End Section

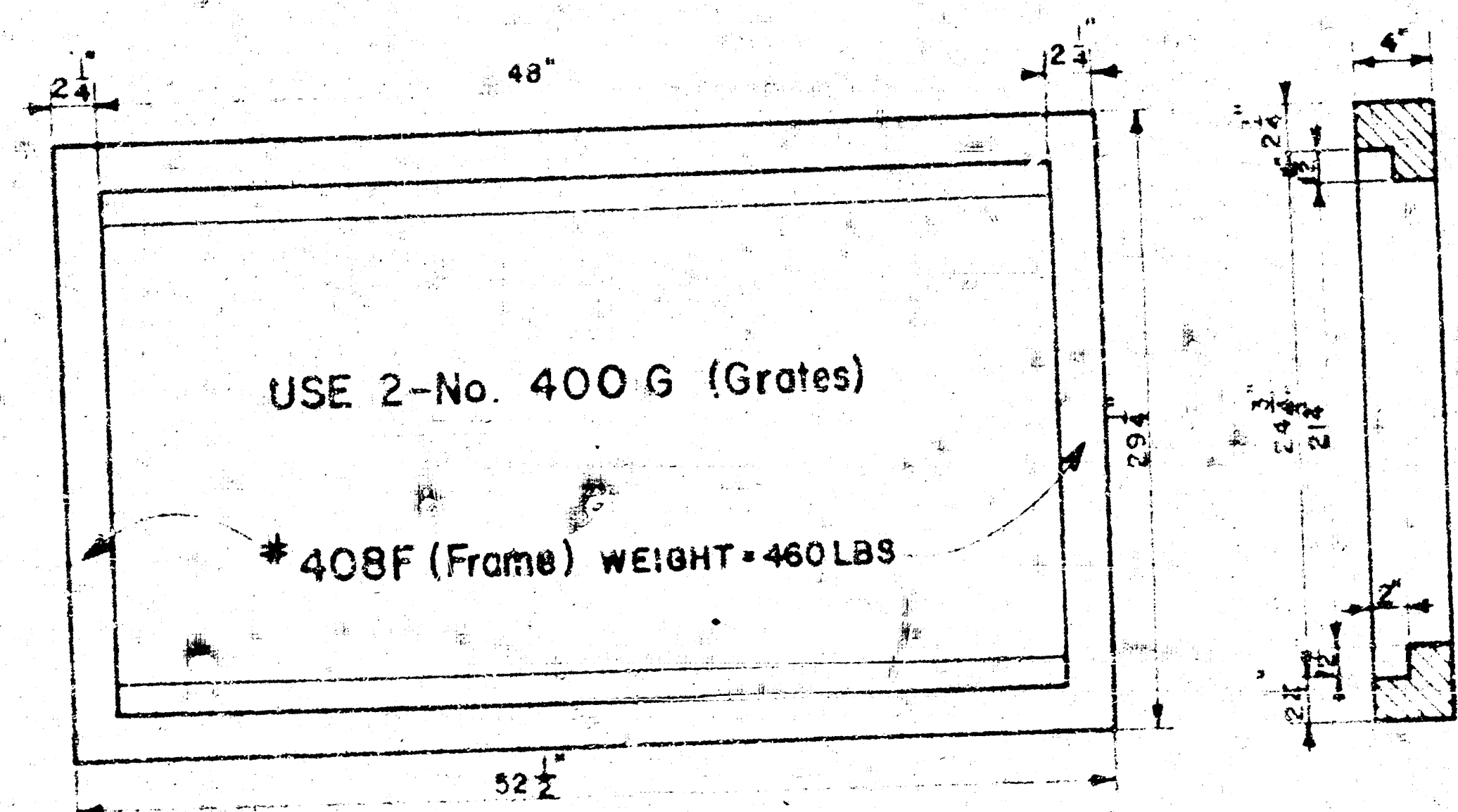
Sta 2+59.64-74' Const Std 2'x4' Catch Basin



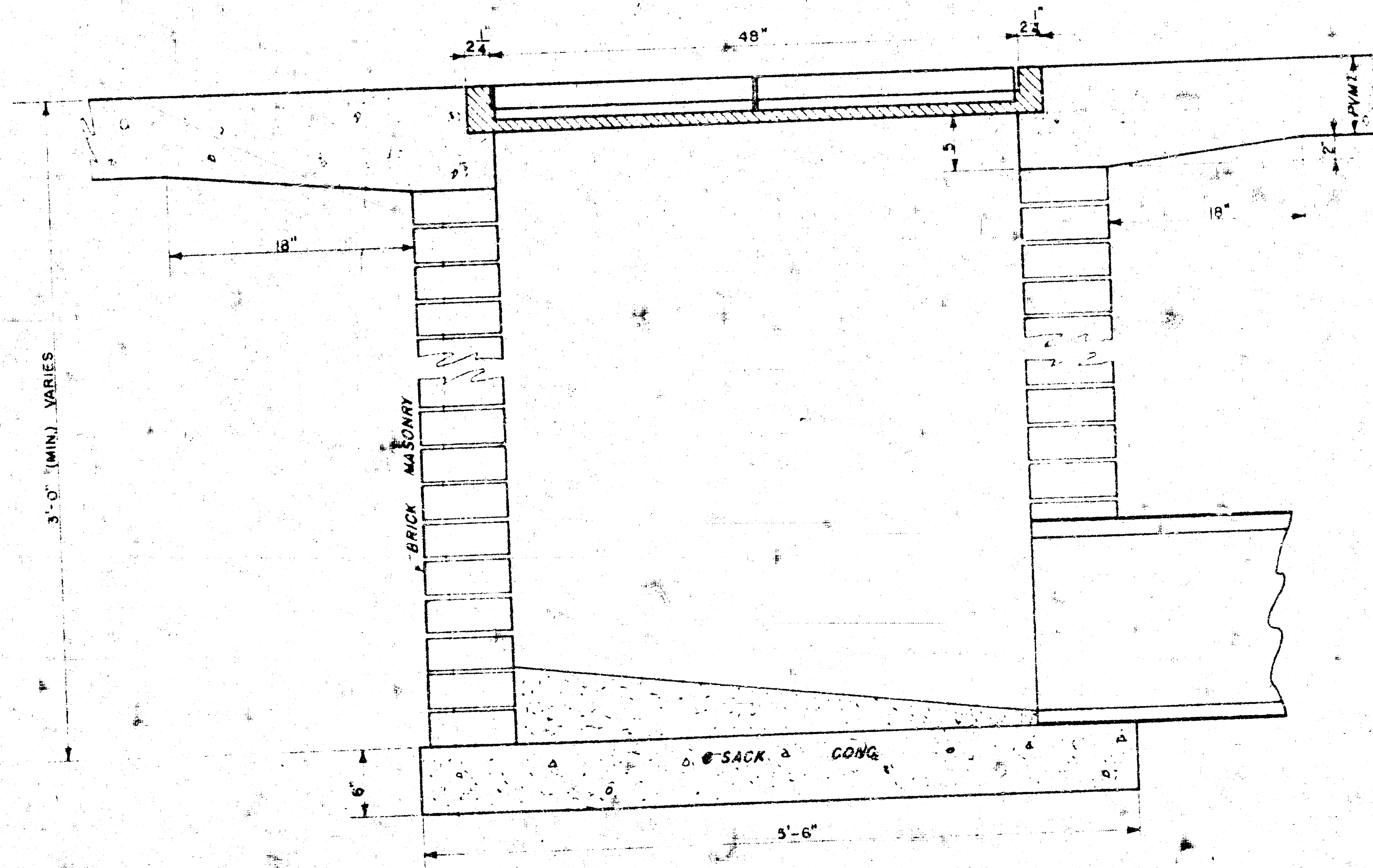
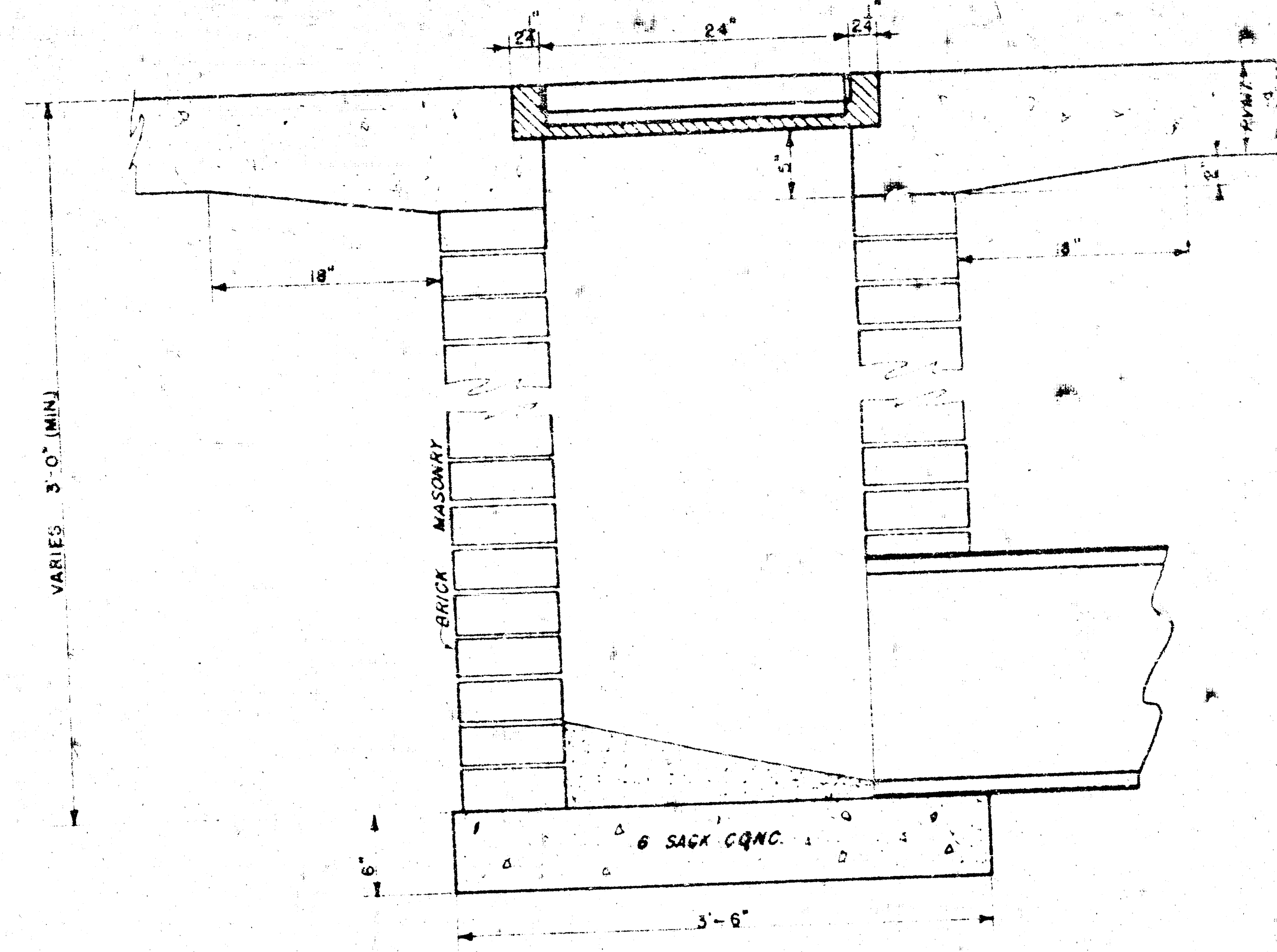
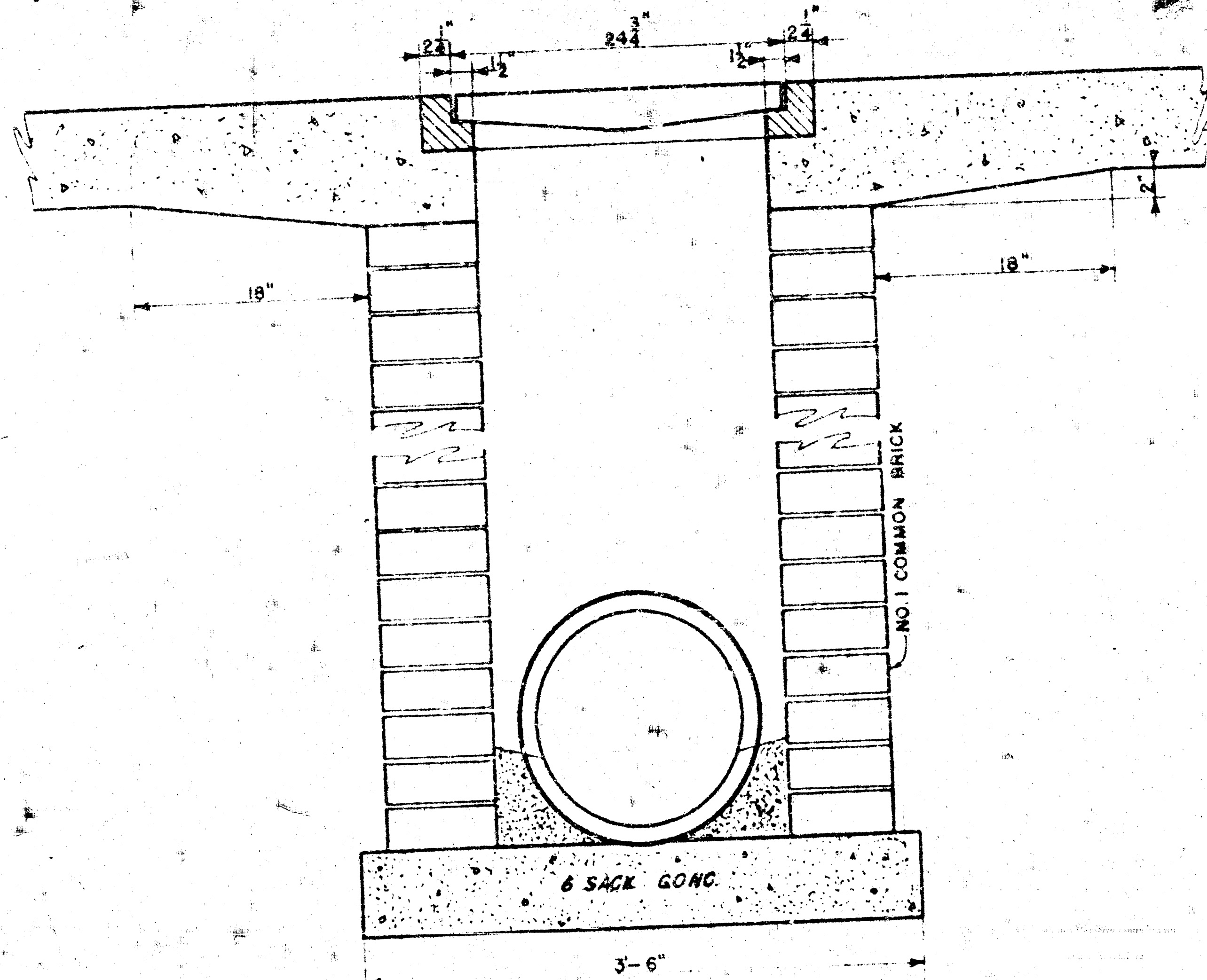
NOTE: Grates shall be imprinted on the top surface with "CITY OF WICHITA" using letters of least 1" in height. Other marking methods may be used only if approved by the engineer.



24"x24" Frame & Grate Detail



Double 24"x24" Frame Detail



DROP INLET DETAILS

R.W. Linn = City Engineer
 City of Wichita, Kansas
 Project
 Project No.
 Date
 Scale: 1-1/2" = 1'-0"