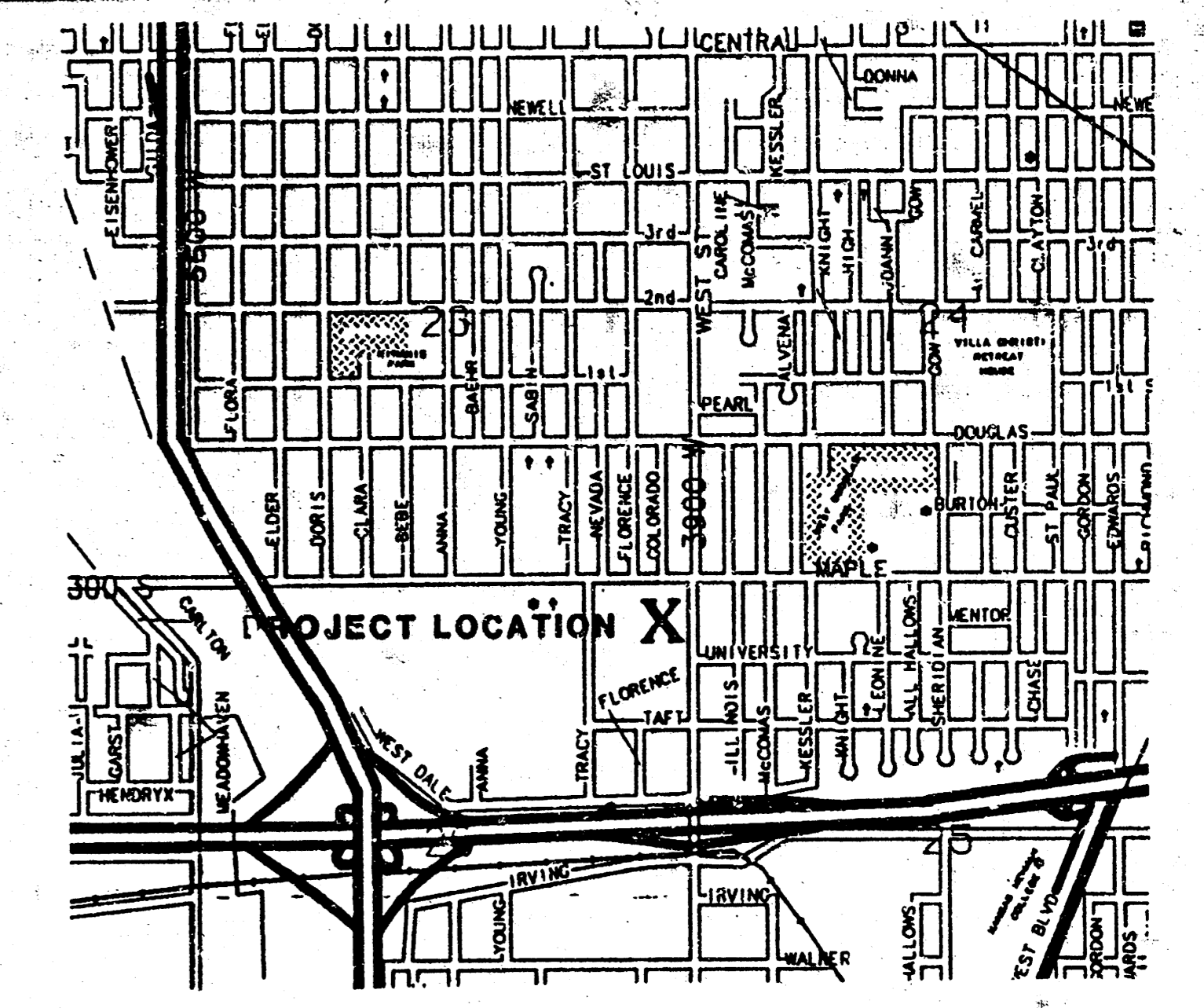
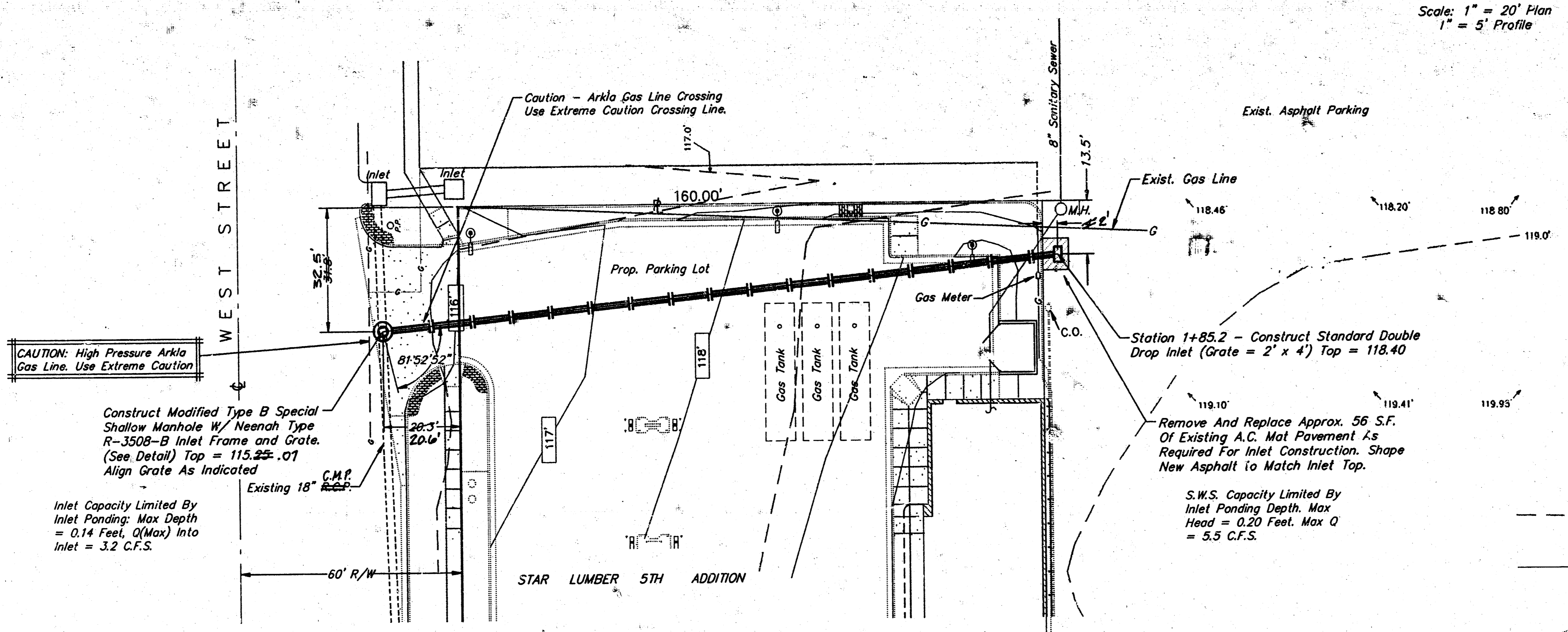
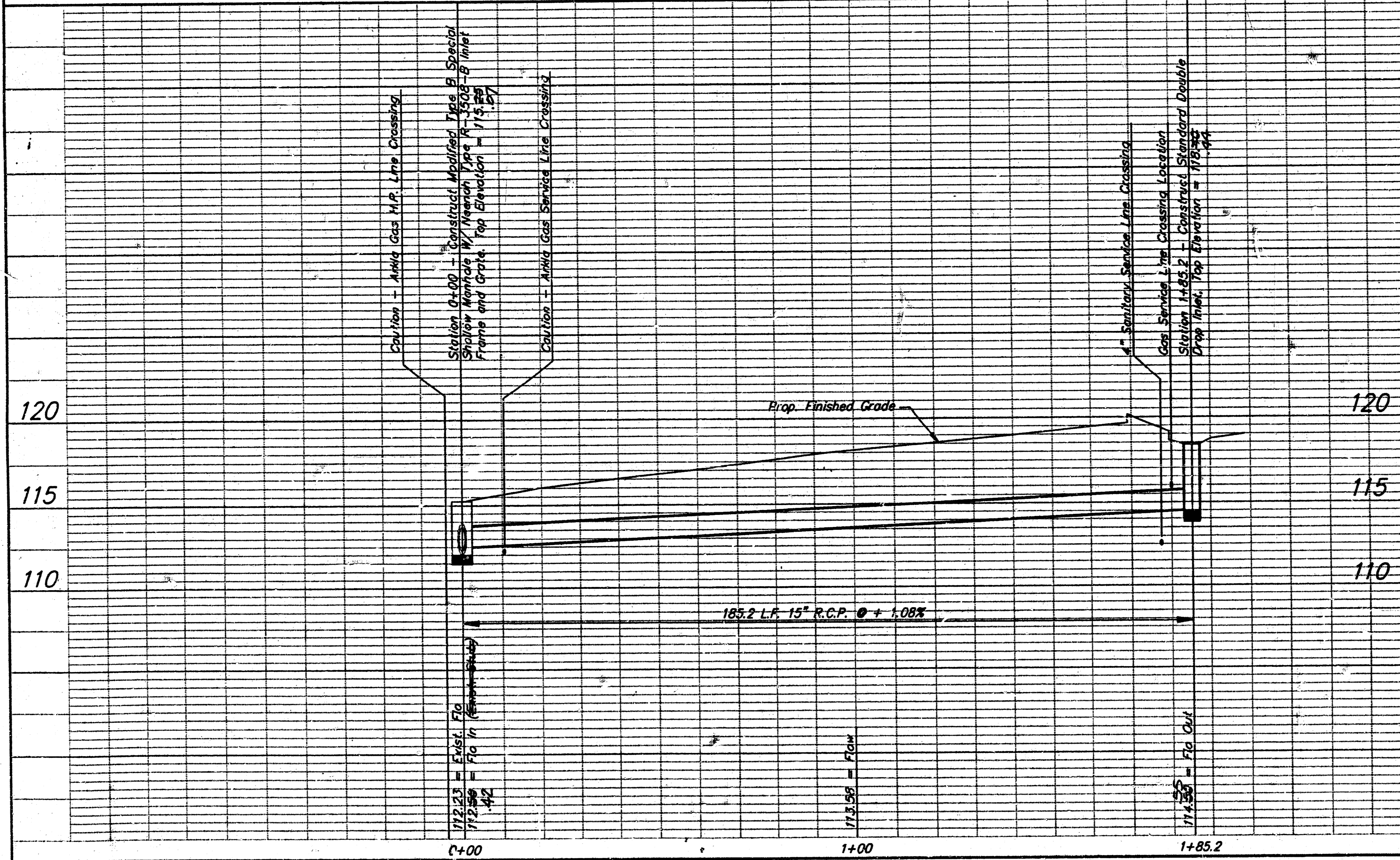
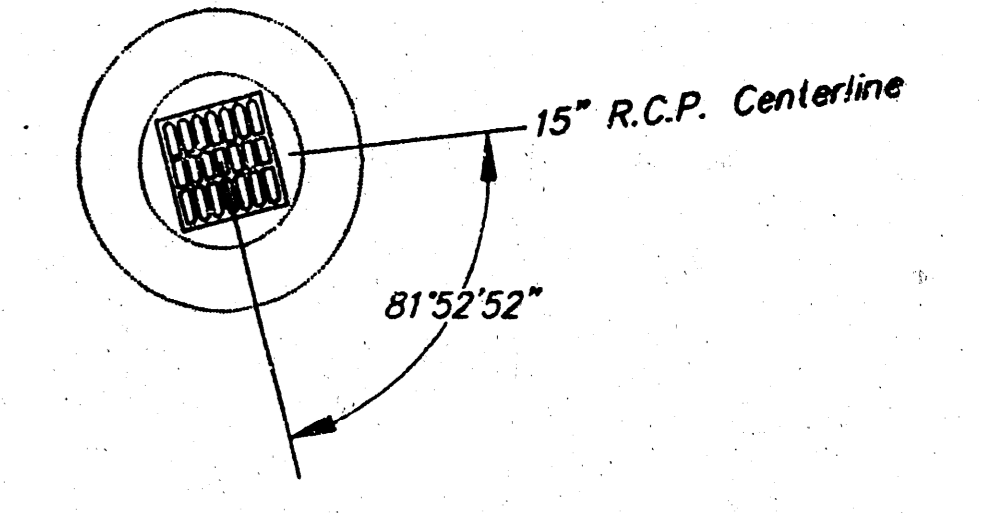


Bench Mark: Square Cut In Back of Walk Located At The N.E. Corner of Star Lumber 5th Addition, Approx. 172 Feet North of Proposed S.W.S. Manhole At Station 0+00. Elevation = 117.11 City Datum



LEGEND

- 117 EXISTING CONTOURS
- 117 FINISH CONTOURS
- 117 EXISTING POINT ELEVATION
- 117 FINISH POINT ELEVATION



GENERAL NOTES

- Underground utility service lines and overhead utility pole lines are to be adjusted as necessary by others prior to construction unless the plans specifically call for their adjustment by the Contractor or unless the plans specifically identify a utility to be adjusted by its owner during construction. Existing utilities and their location, as shown on the plans, represent the best information obtainable for design. Location information has been obtained from the various utility companies and is either from company record drawings or company provided field locations. The Contractor will be required to work around existing utilities within the right-of-way which do not conflict with proposed construction.
- The Contractor shall give all property owners and/or tenants of developed property directly abutting the construction of this project a minimum of ten (10) days advance notice prior to start of construction.
- The Contractor shall be responsible for preserving property irons. The Contractor will be required to re-establish any property irons which are damaged or destroyed by his construction operations. Such irons shall be re-established by a licensed land surveyor in accordance with state law.

APPROVED AS NOTED
BY CITY ENGINEER OF WICHITA

Sanitary Sewer
Storm Sewer
Driveway Approaches
Water Mains
Paving

NOTE TO CONTRACTORS

Inspection and testing for this project is to be provided by a LICENSED CONSULTING ENGINEERING FIRM under contract with the Owner/Developer. Said inspection is to be in accordance with the City of Wichita standard construction engineering practices and verified by a LICENSED PROFESSIONAL ENGINEER. NO WORK SHALL BE PERFORMED IN DEDICATED AREAS OR PUBLIC RIGHT-OF-WAY BY THE CONTRACTOR WITHOUT SUCH INSPECTION AND APPROVAL WORK AS COMPLETED WITHOUT WRITTEN AUTHORIZATION BY THE CITY ENGINEER.

PRIVATE STORM WATER SEWER TO SERVE
QUIK TRIP #396

BAUGHMAN COMPANY P. A.
ENGINEERING & SURVEYING
316/262-7271 • 315 ELLIS • WICHITA, KANSAS 67211

PROJECT NUMBER
309PPS

DESIGN C. Bohm	DRAWN	APPROVED	DATE Sep. 25, 91	SCALE Noted
-------------------	-------	----------	---------------------	----------------

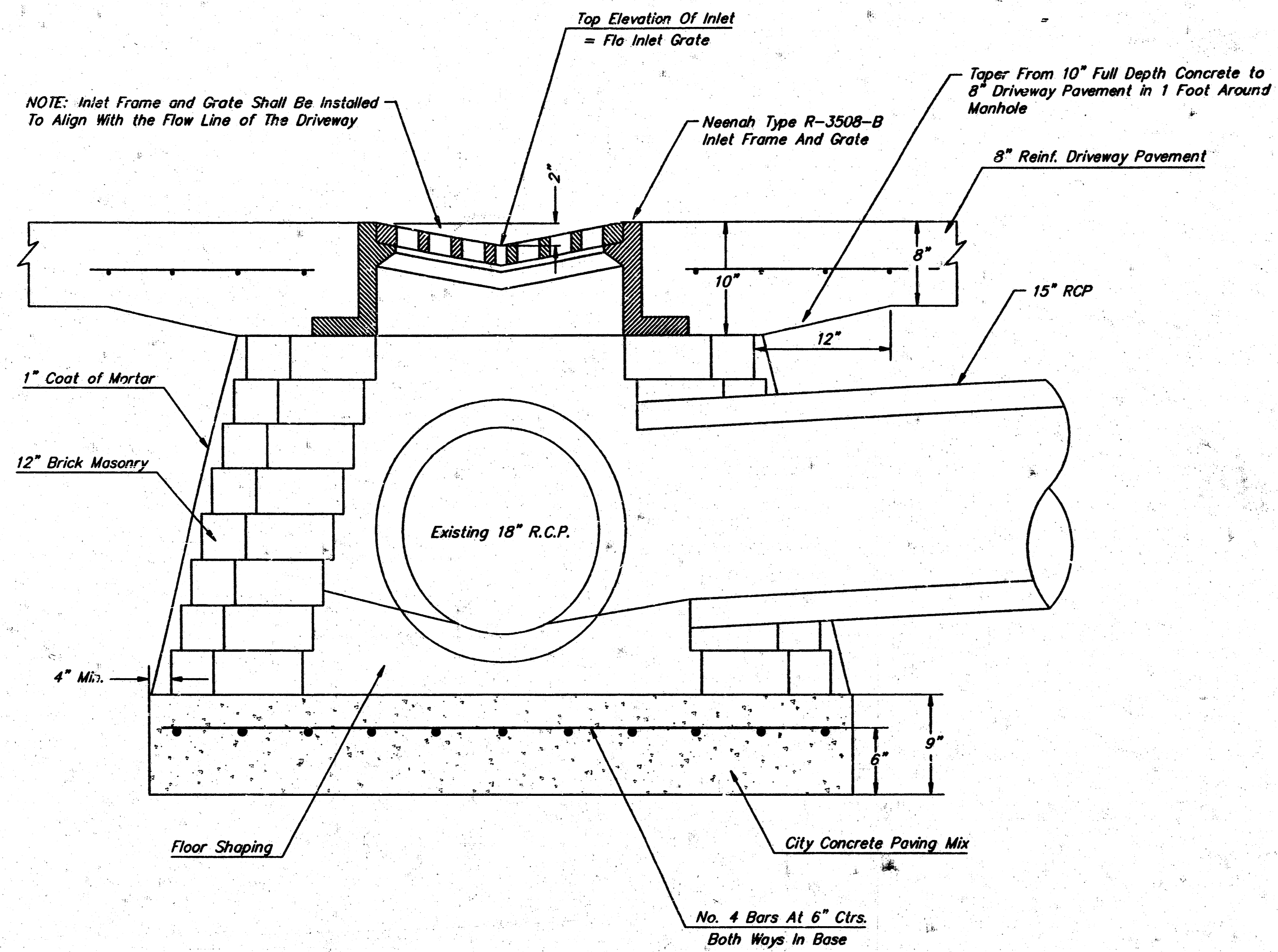
REVISED AS BUILT 12-20-91 TC

QUIK TRIP NO. 396

WEST SIDE WICHITA, KANSAS

QUIK TRIP


FILMED FROM THE AVAILABLE COPY



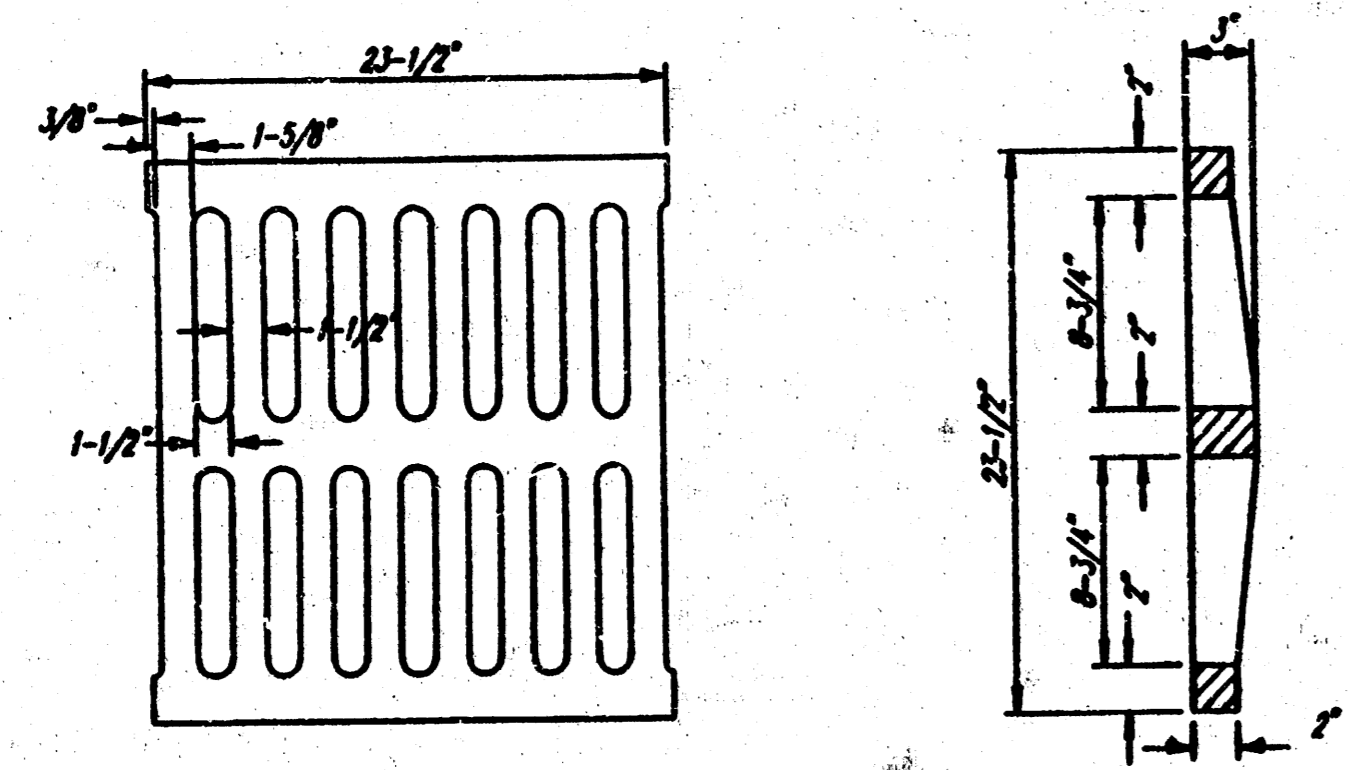
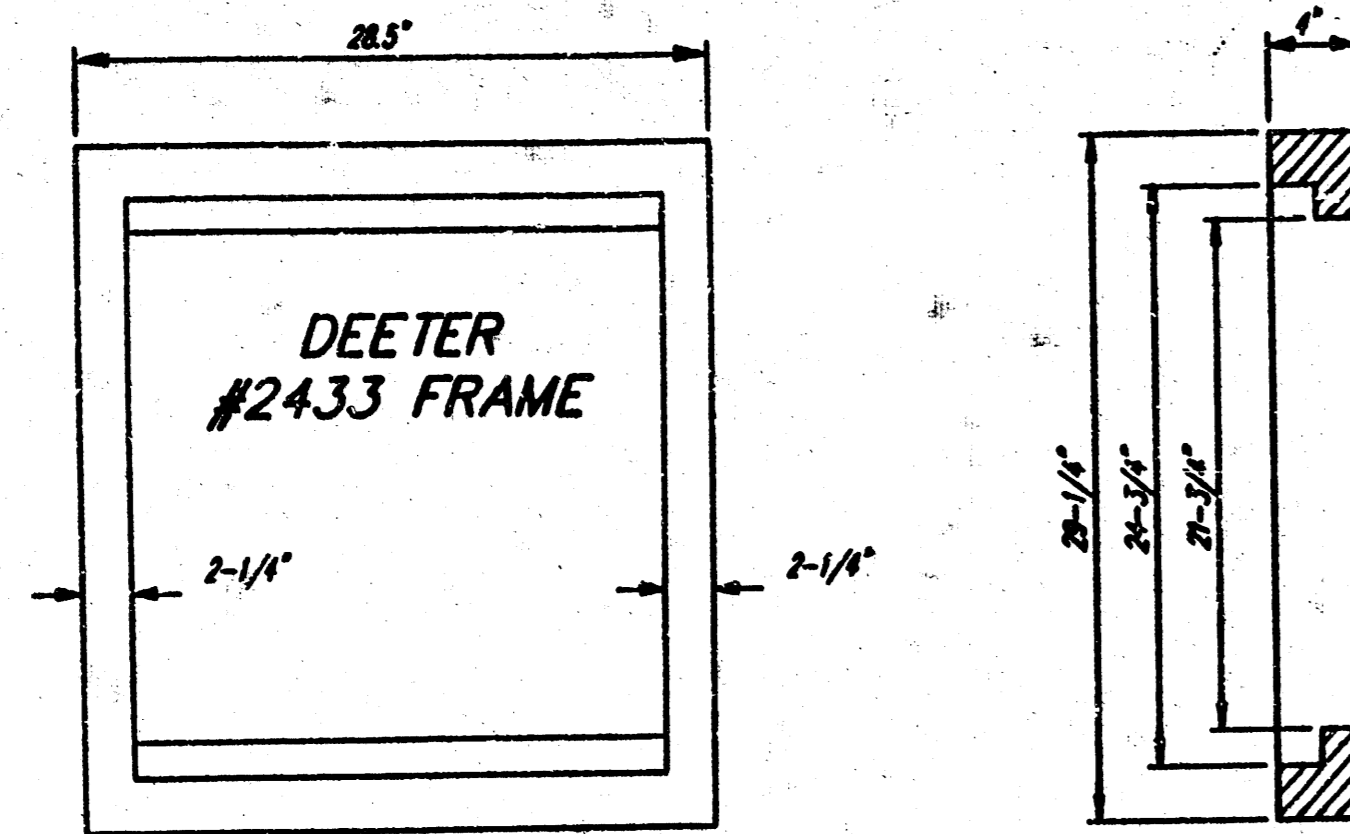
GENERAL NOTES

- MORTAR USED IN MASONRY CONSTRUCTION SHALL CONTAIN 8 SACKS OF CEMENT PER CUBIC YARD. CONCRETE USED IN MANHOLE BASES SHALL CONFORM TO THE REQUIREMENTS OF CONCRETE FOR CONCRETE PAVEMENT CONSTRUCTION AS SPECIFIED IN THE CITY STANDARD PAVEMENT SPECIFICATIONS USING CITY CONCRETE CEMENT MIX WITHOUT AIR ENTRAINING ADMIXTURE. COMPLETED MANHOLE SHALL BE WITHOUT LEAKS AND WATER TIGHT.
- REINFORCING STEEL SHALL BE INSTALLED IN THE MANHOLE BASES AND SHALL CONSIST OF NO. 4 BARS PLACED ON 6" CENTERS IN BOTH DIRECTIONS. THE MANHOLE BASE REINFORCEMENT SHALL BE PLACED 6 INCHES ABOVE THE BOTTOM OF THE MANHOLE BASE. ALL COSTS FOR FURNISHING AND INSTALLING REINFORCING STEEL SHALL BE INCLUDED IN THE UNIT PRICE BID FOR THE MANHOLE.

MODIFIED TYPE B SPECIAL SHALLOW MANHOLE W/ INLET FRAME AND GRATE

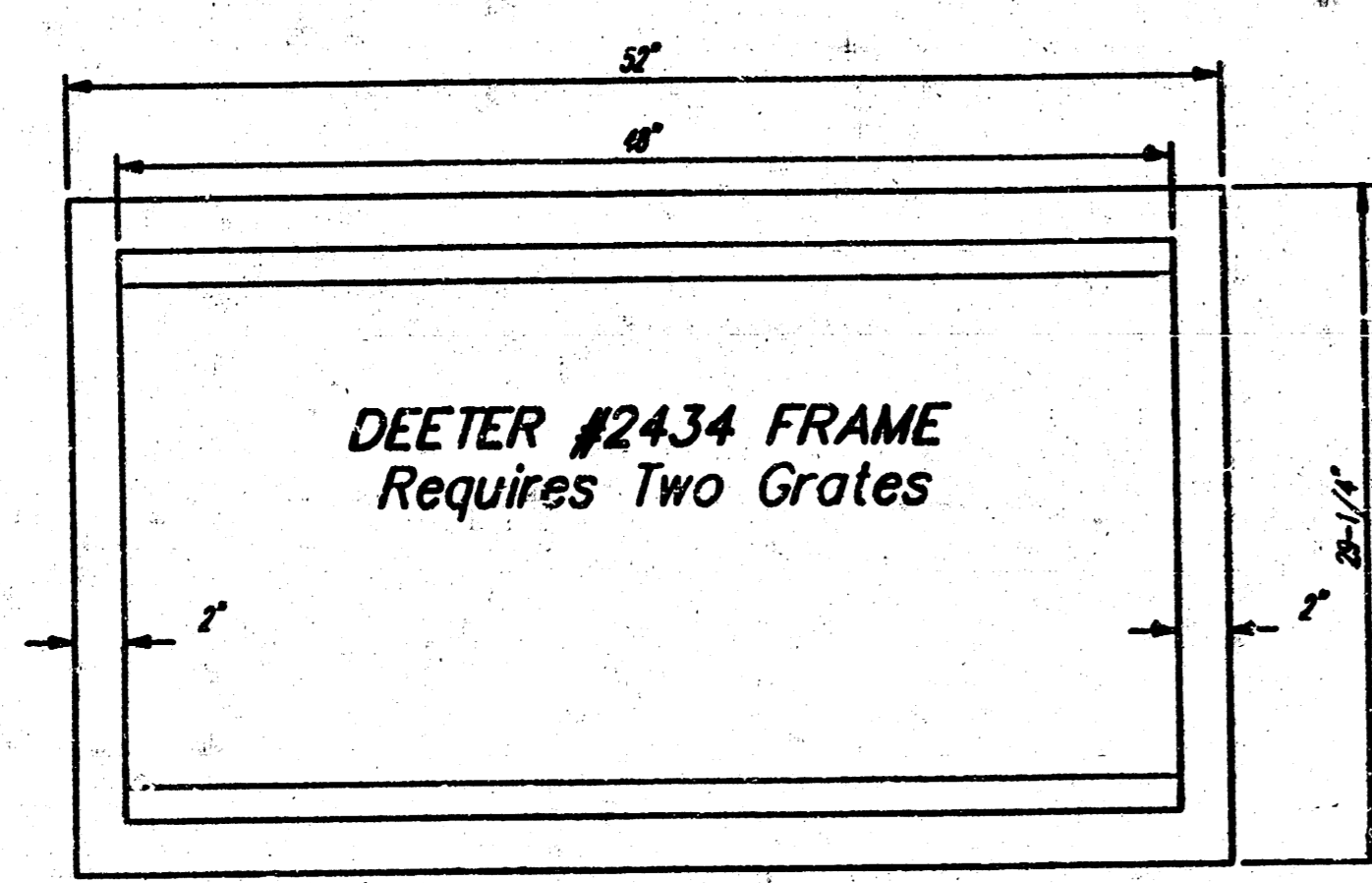
 BAUGHMAN COMPANY P. A. ENGINEERING & SURVEYING 316/262-7271 • 315 ELLIS • WICHITA, KANSAS 67211		REV.
PROJECT NUMBER 309PPS		SHEET 2
DESIGN C. Bohm	DRAWN C. Bohm	APPROVED DATE Sept. 1991
SCALE None		OF 3

FILMED FROM THE BEST
AVAILABLE COPY....

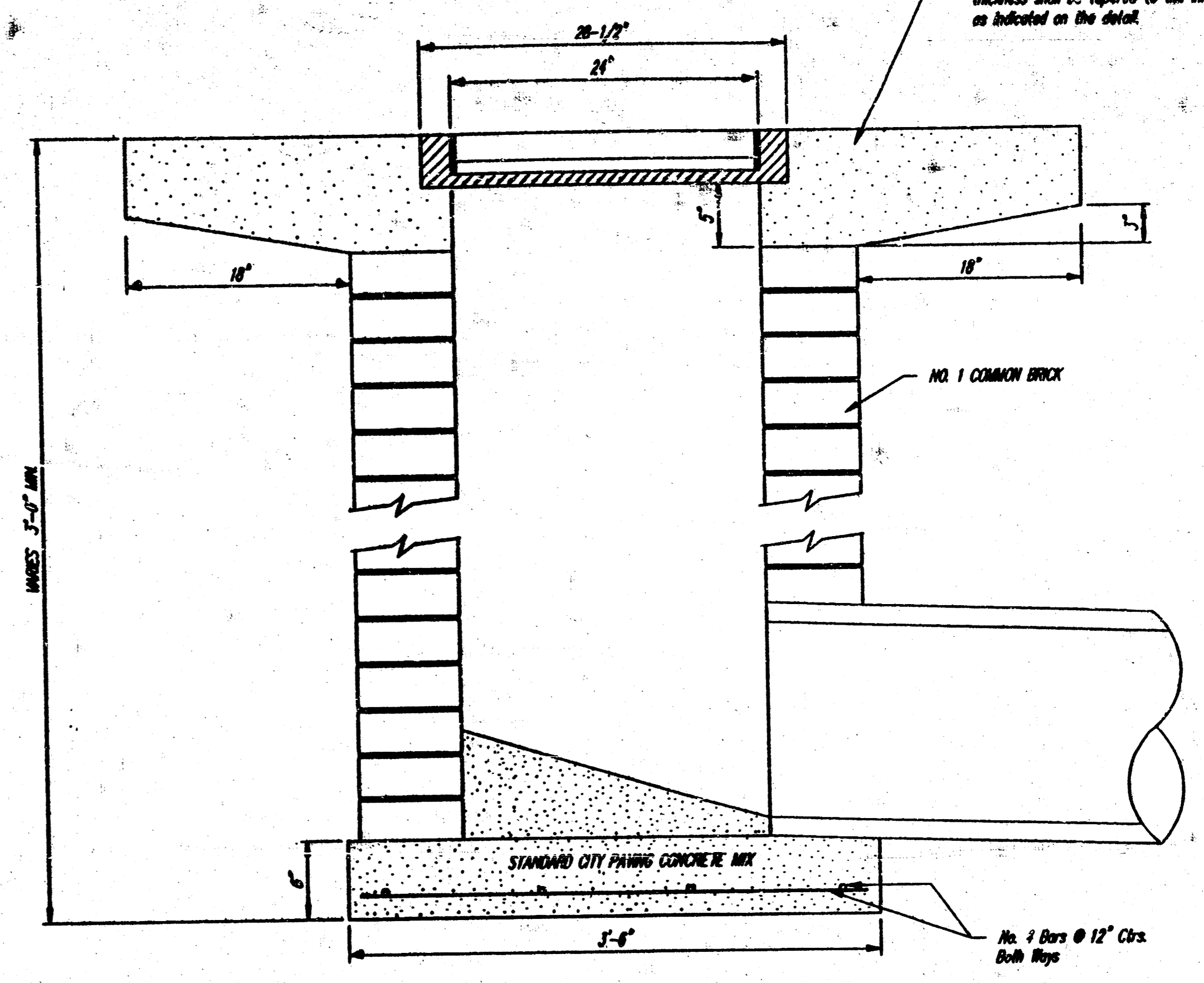
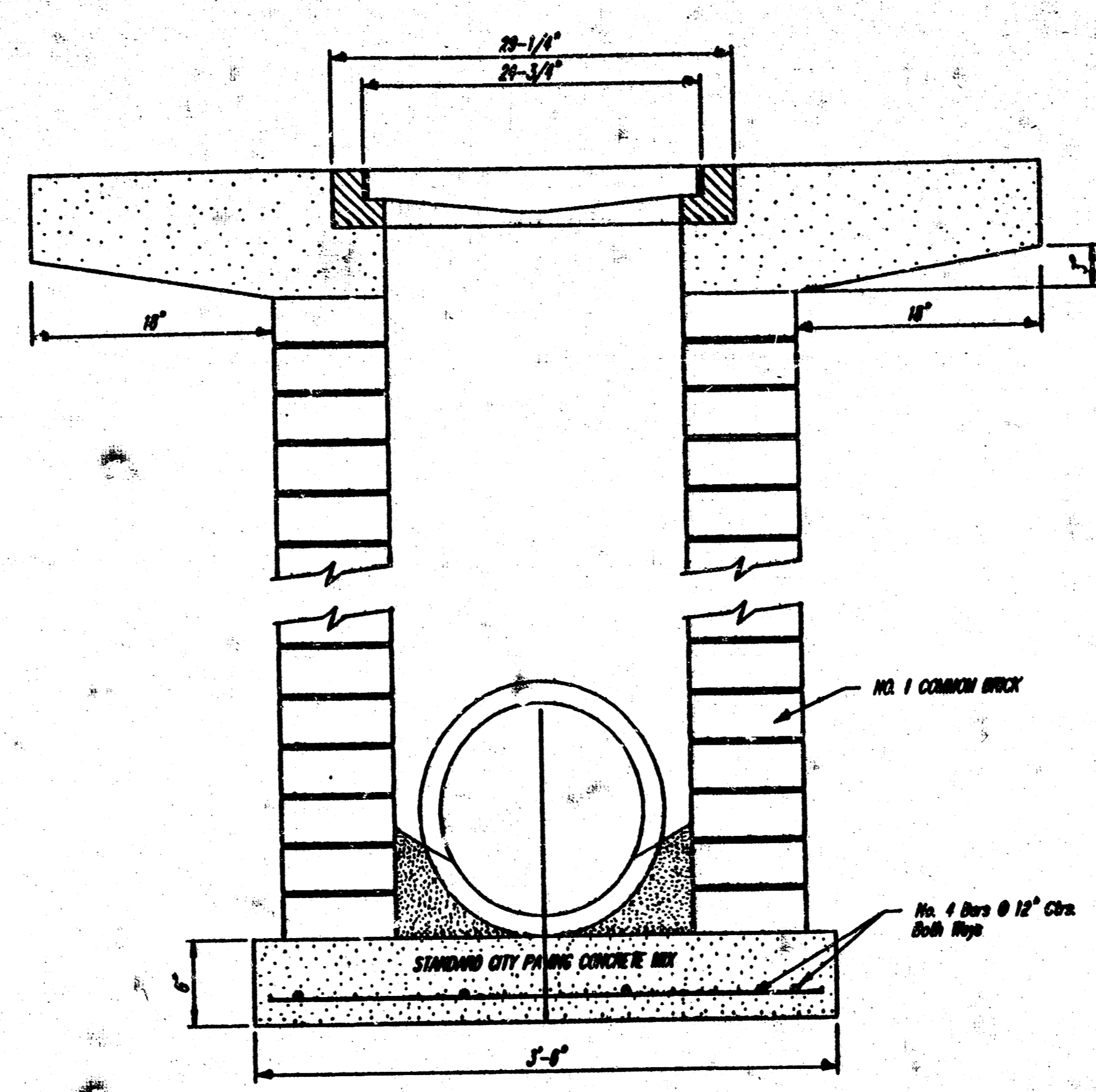


DEETER #2433 GRATE
24" x 24" Frame and Grate Detail

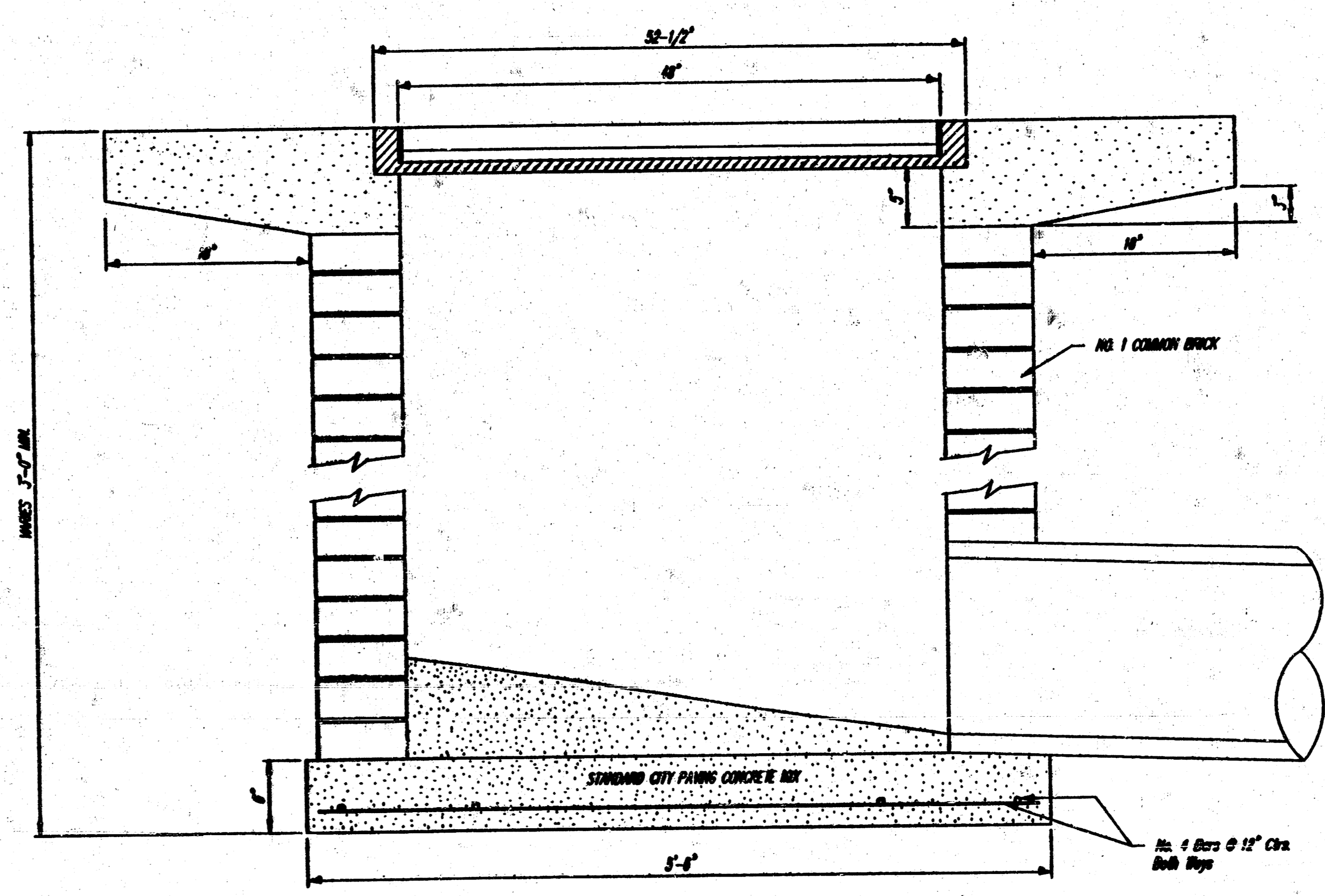
NOTE: Grates shall be imprinted on the top surface with "CITY OF WICHITA" using letters at least 1" in height. Other marking methods may be approved by the engineer.



Double 24" x 24" Frame Detail



Note: Concrete apron shall be constructed around the inlet when inlet is located in an exposed area. Where the inlet is adjacent to pavement, the pavement thickness shall be tapered to the inlet in 10 inches as indicated on the detail.



DROP INLET DETAILS
M.E. Lindebak, City Engineer
City of Wichita, Kansas

Project Number	3
309 PFS	3

FILMED FROM THE BEST AVAILABLE COPY