

# SCHOOL CROSSINGS AT SPECIFIED LOCATIONS

PROJ. NO. 472-76-355-80768-000-000-001

CITY OF WICHITA, KANSAS  
M.E. LINDEBAK - CITY ENGINEER

## LOCATIONS

- MT. VERNON BETWEEN GREEN ACRES AND ROANOKE
- MT. VERNON BETWEEN BLUFF AND CRESTWAY
- 18TH STREET NORTH BETWEEN SALINA AND PAYNE
- ARKANSAS AVE BETWEEN 32ND AND 33RD ST'S NORTH

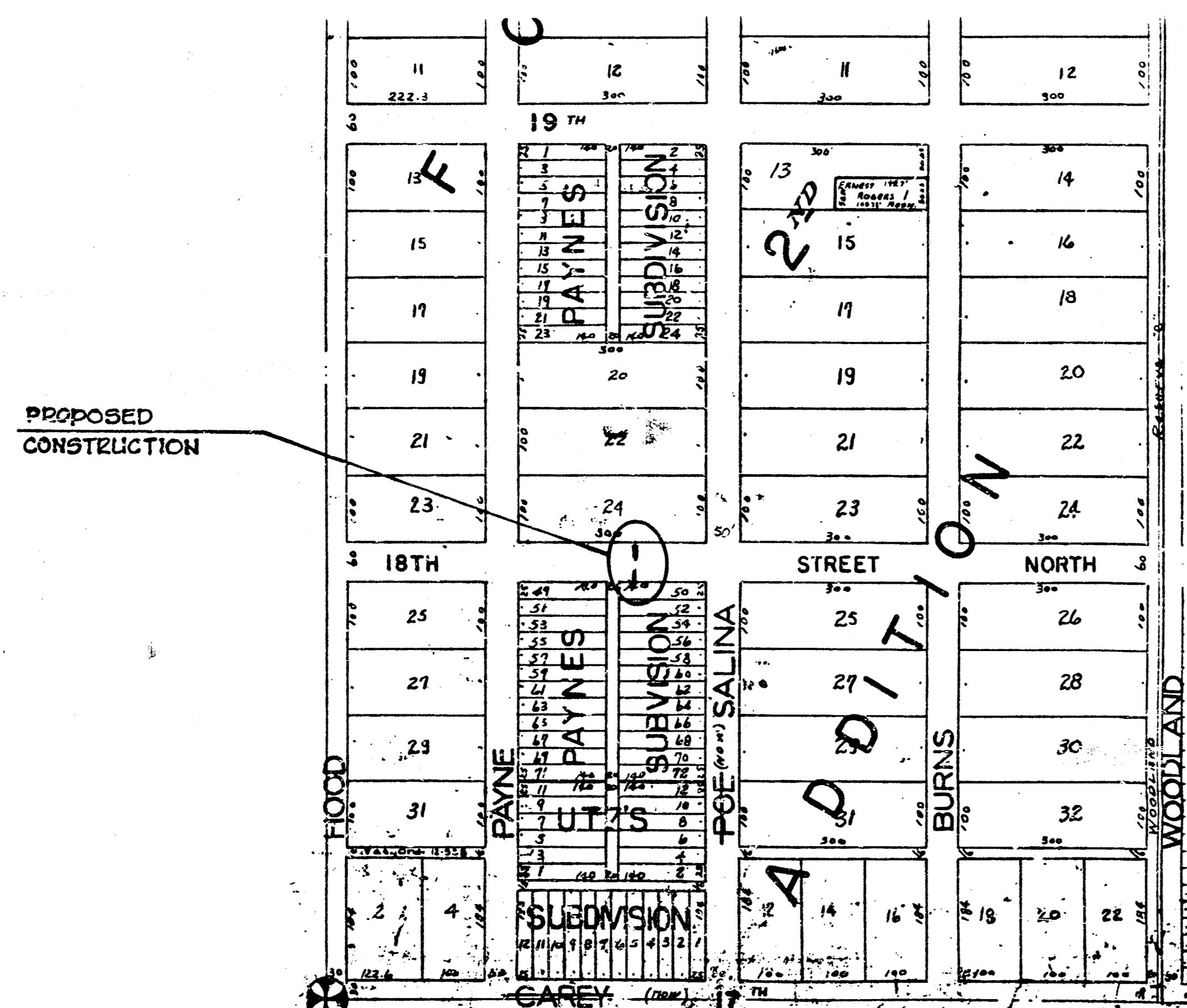
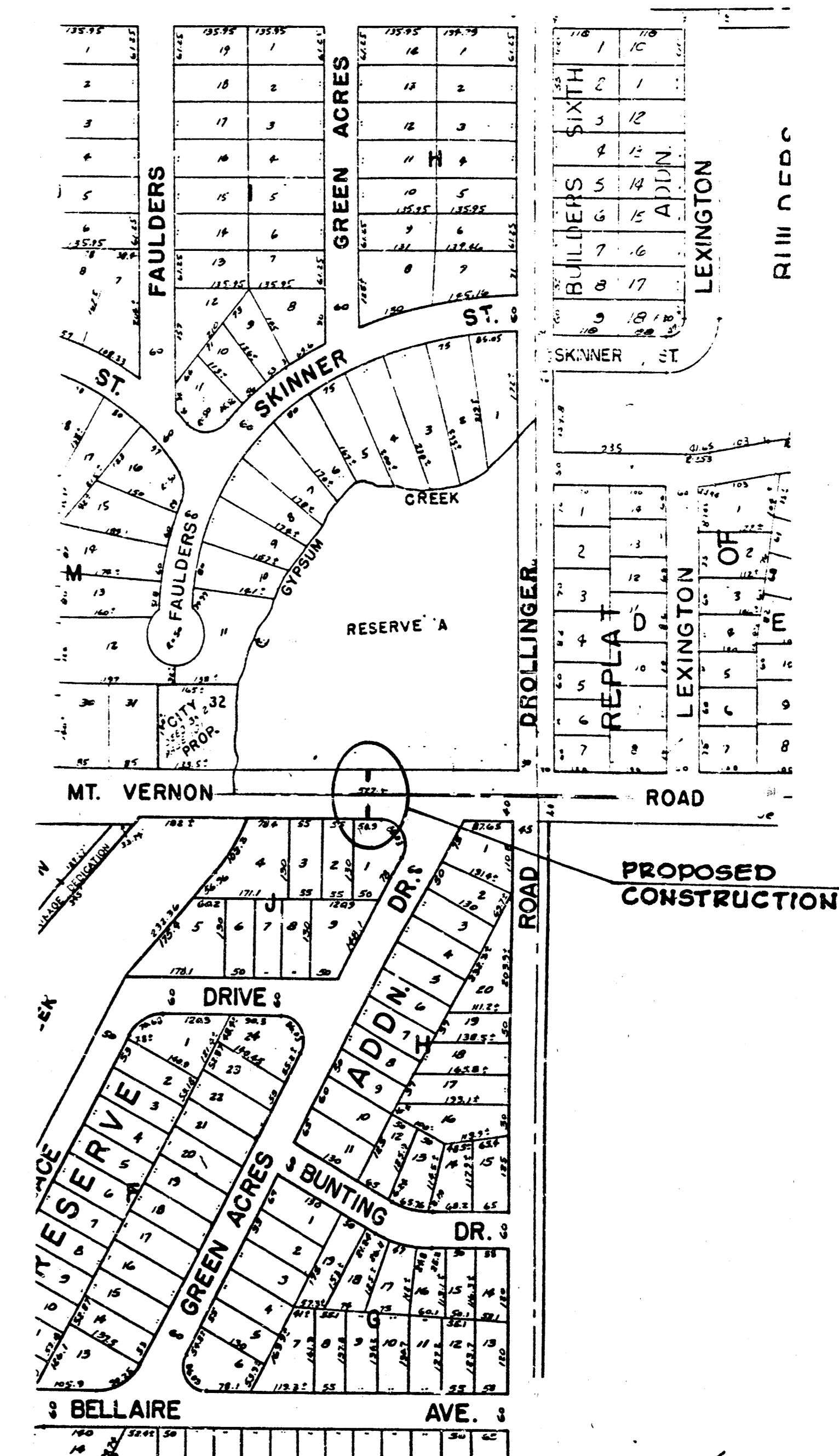
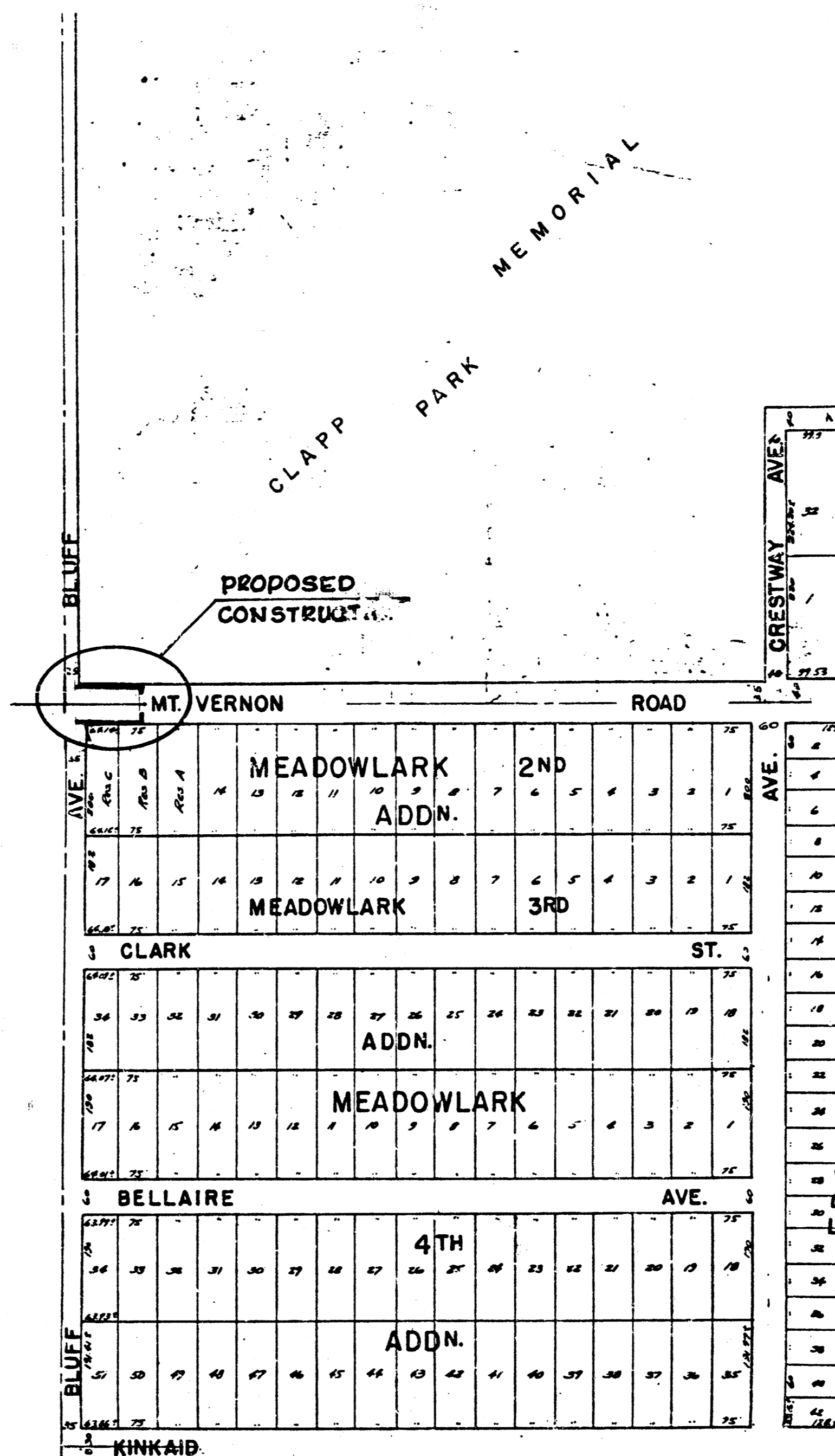
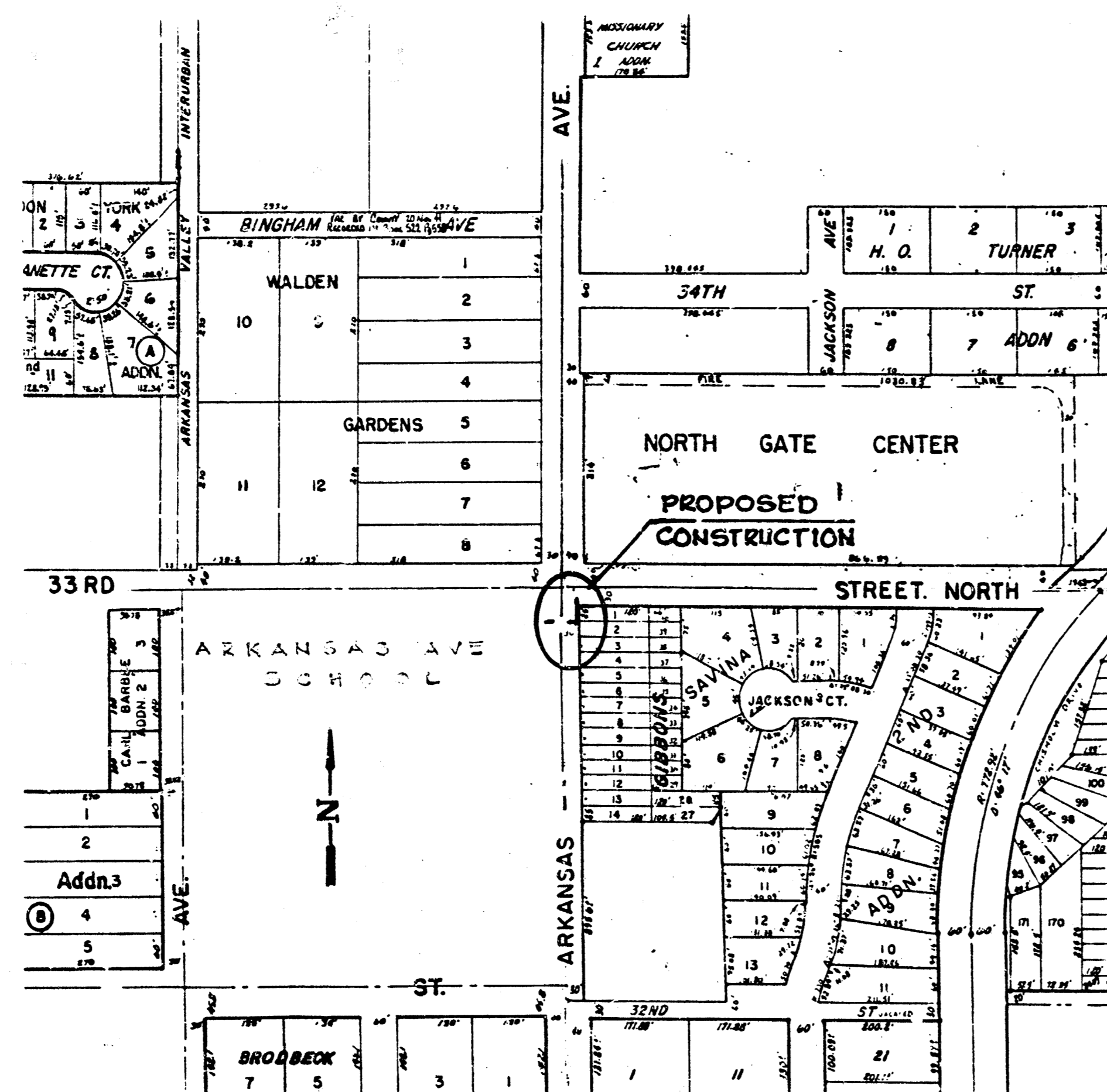
### • GENERAL NOTES •

1. INFORMATION SHOWN ON PLANS NOT DIRECTLY RELATED TO THE CONSTRUCTION OF SIDEWALKS & WHEELCHAIR RAMP IS NOT A PART OF THIS CONTRACT AND SHALL BE CONSIDERED AS DELETED.
2. EXACT LOCATION AND GRADE TO BE DETERMINED BY THE FIELD ENGINEER AT TIME OF CONSTRUCTION.
3. ALL EARTHWORK AND SUBGRADE COMPACTION NECESSARY TO COMPLETE THIS PROJECT IS TO BE SUBSIDIARY TO OTHER BID ITEMS.
4. ALL AREAS DISTURBED BY THE CONTRACTOR SHALL BE RESTORED TO A CONDITION ACCEPTABLE TO THE ENGINEER. THIS WORK SHALL BE SUBSIDIARY TO OTHER BID ITEMS.

### INDEX OF SHEETS

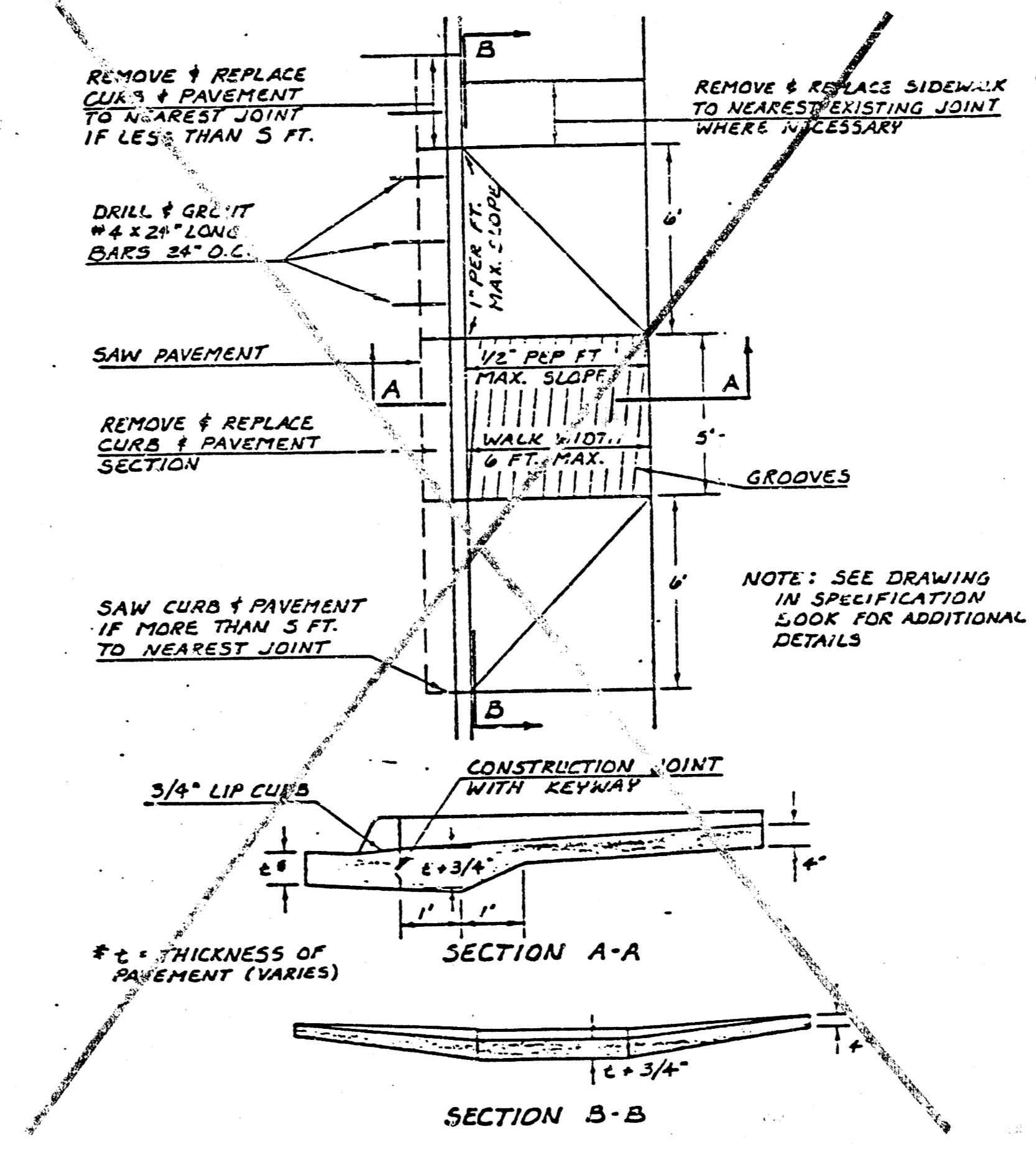
SHEET No.	DESCRIPTION
1. _____	COVER SHEET
2. _____	AREA LOCATION MAP
3. _____	WHEELCHAIR RAMP DETAILS
4. _____	PLAN MT.VERNON BET. GREEN ACRES + ROANOKE
5. _____	" MT.VERNON BET. BLUFF + CRESTWAY
6. _____	" 18TH ST. N. BET. SALINA + PAYNE
7. _____	PLAN ARKANSAS BET. 32ND + 33RD ST. N.

NOTE: PLAN SHEETS INCLUDED IN THIS PLAN WERE PREPARED PRIMARILY TO SHOW WORK INVOLVED FOR INSTALLATION OF SCHOOL CROSSWALK SIGNALIZATION. THESE PLAN SHEETS ALSO INDICATE THE EXTENT OF WORK AND LOCATION OF SIDEWALK AND WHEELCHAIR RAMP CONSTRUCTION FOR THE MID-BLOCK SCHOOL CROSSINGS AND THEREFORE ARE PROVIDED AS INFORMATION TO PROSPECTIVE BIDDERS. WORK SHOWN ON THE DRAWINGS CONSISTING OF SIGNALIZATION, ELECTRICAL WIRING, CONDUIT INSTALLATION AND PAVEMENT TRAFFIC MARKING WILL BE COMPLETED BY OTHERS AND THIS WORK IS NOT A PART OF THIS CONTRACT.



PROJECT DESCRIPTION  
**AREA LOCATION MAP**  
 PROJECT NUMBER  
 412-76-355-80768-000-000-001

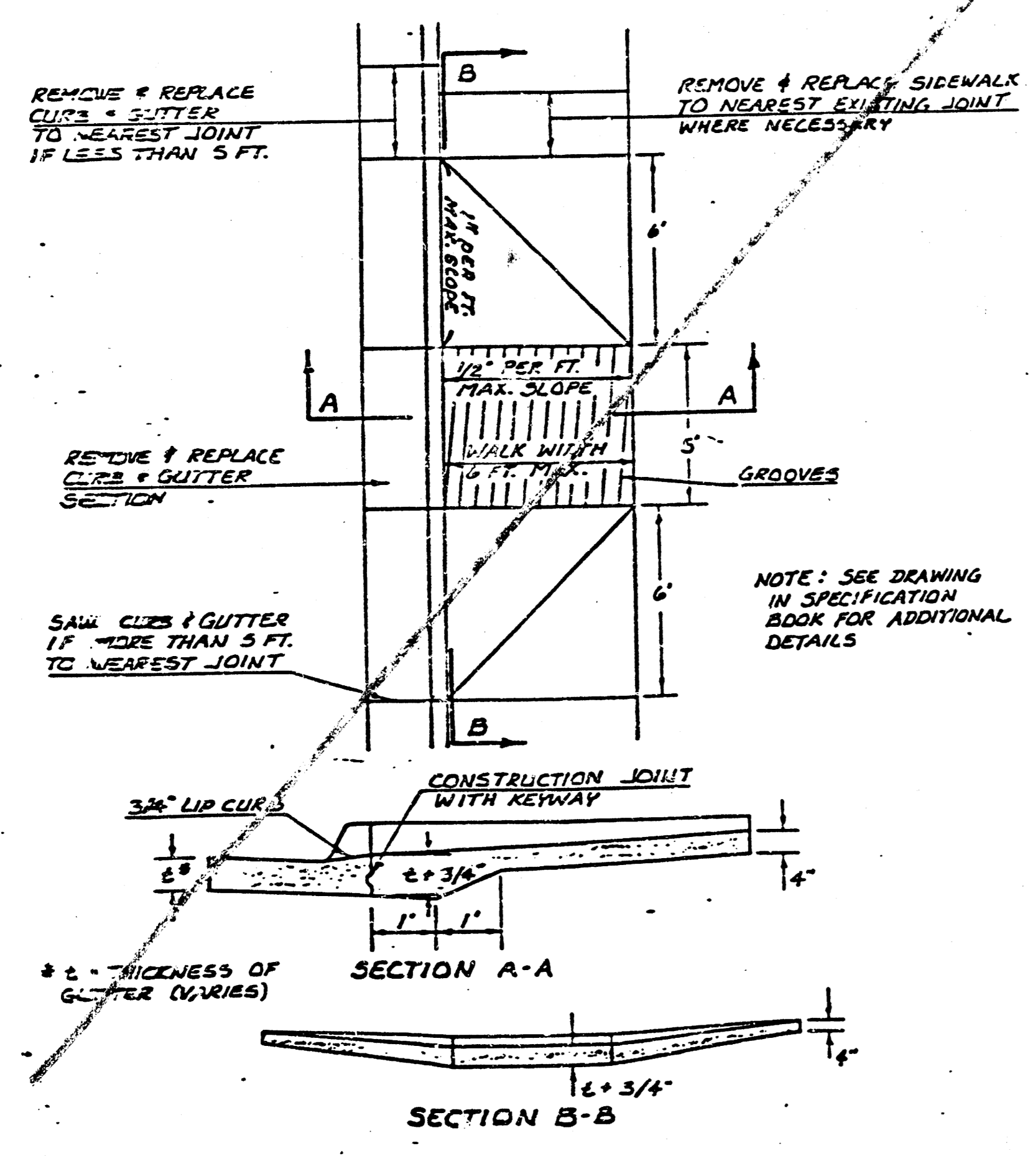
STANDARD WHEELCHAIR RAMP CONSTRUCTION DETAIL FOR CONCRETE STREETS WITH MONOLITHIC CURB AND FULL WALK



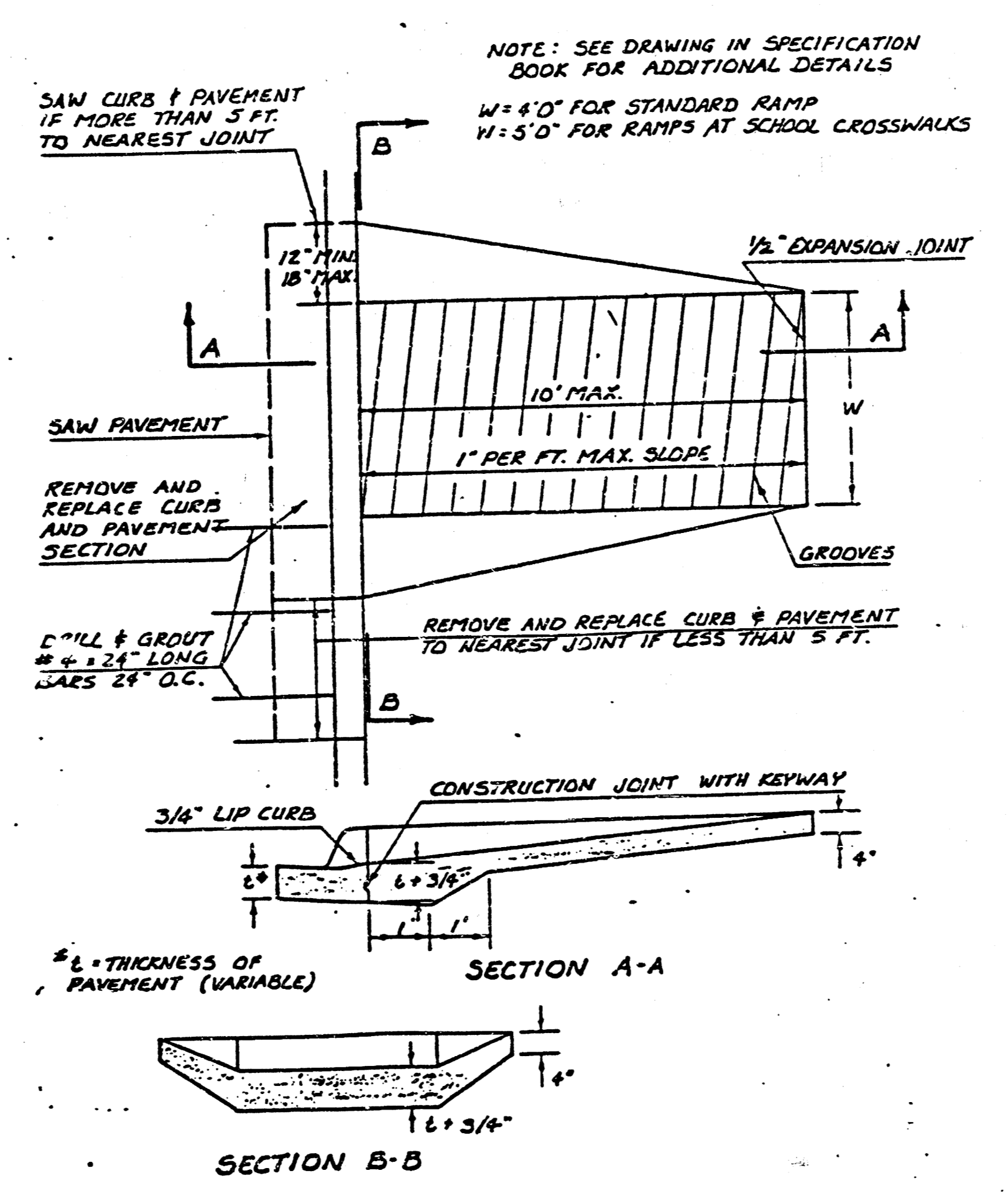
NOTE: ACTUAL CALCULATED QUANTITY OF NEW SIDEWALK CONSTRUCTION IS 1050 SQ. FT. BID AMOUNT HAS BEEN INCREASED TO COVER UNFORSEEN WORK REQUIRED TO MATCH JOINTS, ADJUST ELEVATIONS OR REPLACE DAMAGED WALK. AMOUNT OF WORK DONE AND PAID FOR WILL BE DETERMINED BY THE ENGINEER.

NOTE: THE COST OF ALL WORK INDICATED ON THIS SHEET, SHALL BE INCLUDED IN THE UNIT PRICE COSTS WHEEL CHAIR RAMP WHICH PRICE SHALL INCLUDE ALL COSTS OF REMOVING AND RECONSTRUCTING EXISTING COMBINED CURB AND GUTTER, MONOLITHIC CURB, PAVEMENT, COMPACTION OF SUBGRADE AND/OR NECESSARY AREA GRADING.

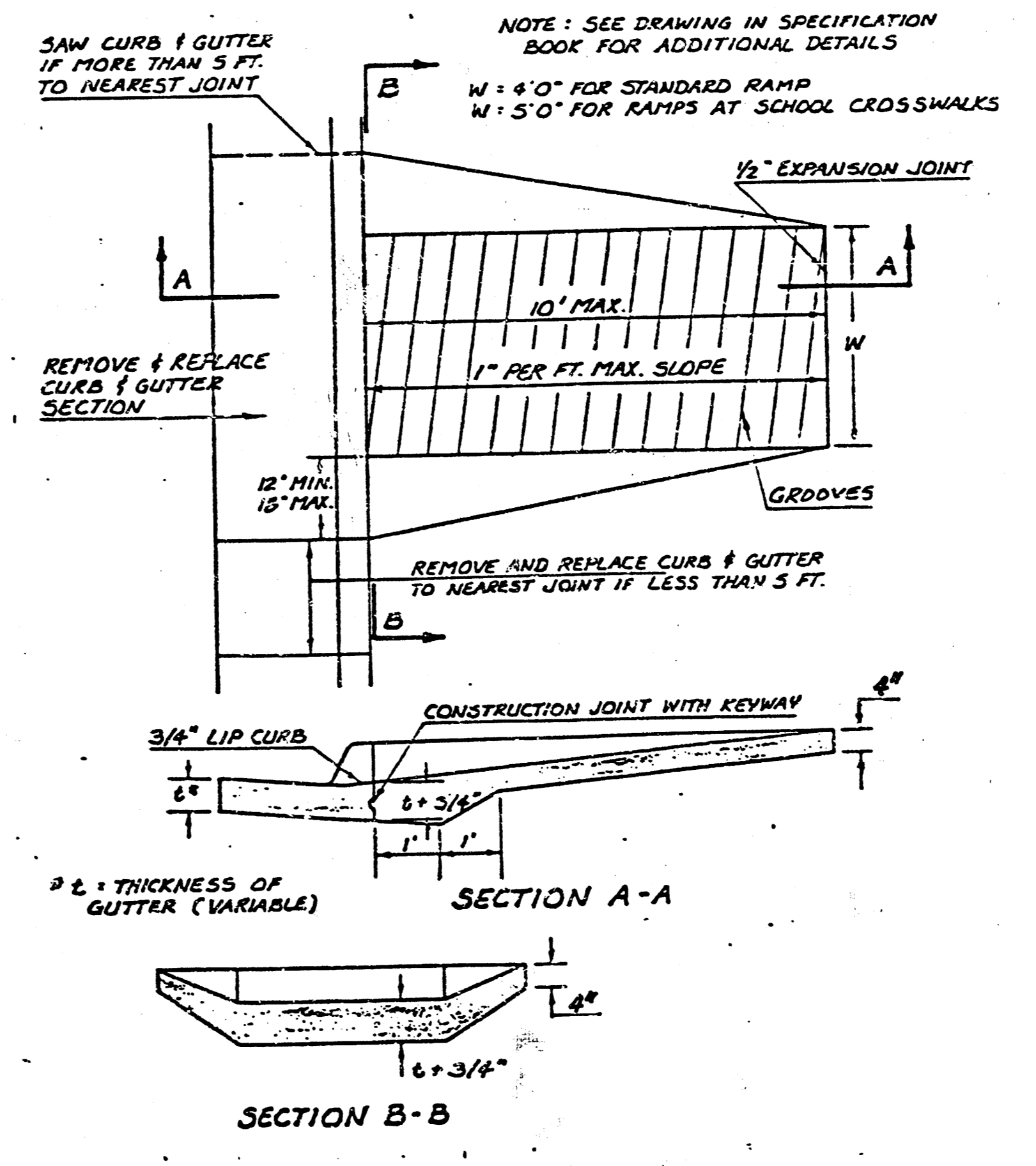
STANDARD WHEELCHAIR RAMP CONSTRUCTION DETAIL FOR STREETS WITH COMBINED CURB & GUTTER AND FULL WALK

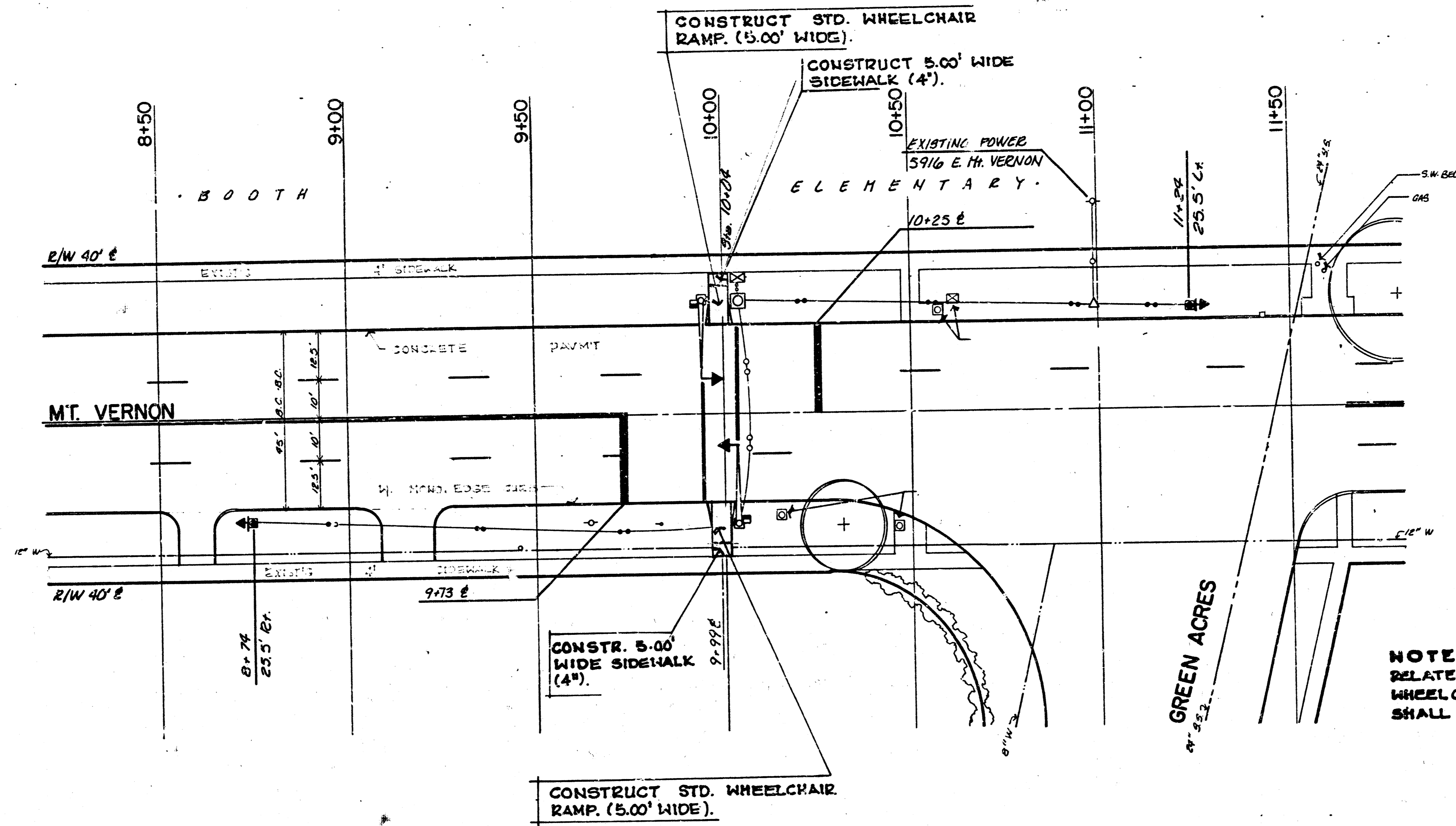


STANDARD WHEELCHAIR RAMP CONSTRUCTION DETAIL FOR CONCRETE STREETS WITH MONOLITHIC CURB



STANDARD WHEELCHAIR RAMP CONSTRUCTION DETAIL FOR STREETS WITH COMBINED CURB & GUTTER



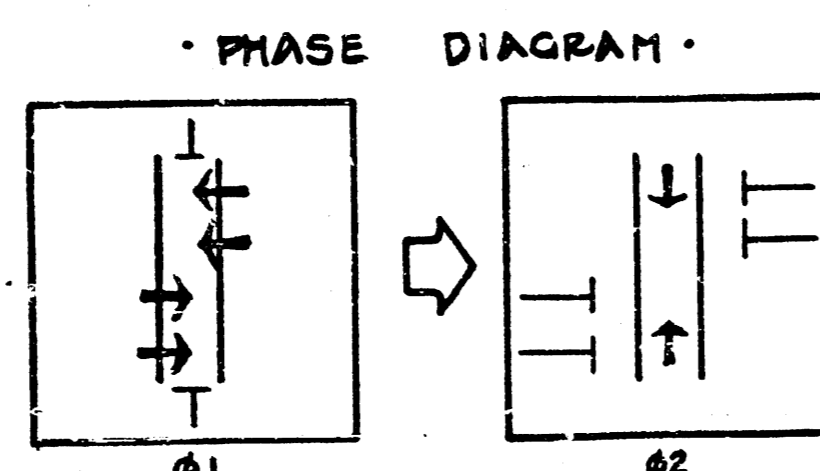


NOTE: INFORMATION SHOWN ON PLAN NOT DIRECTLY RELATED TO THE CONSTRUCTION OF SIDEWALKS AND WHEELCHAIR RAMPS IS NOT PART OF THIS CONTRACT AND SHALL BE CONSIDERED AS DELETED.

GENERAL NOTES:

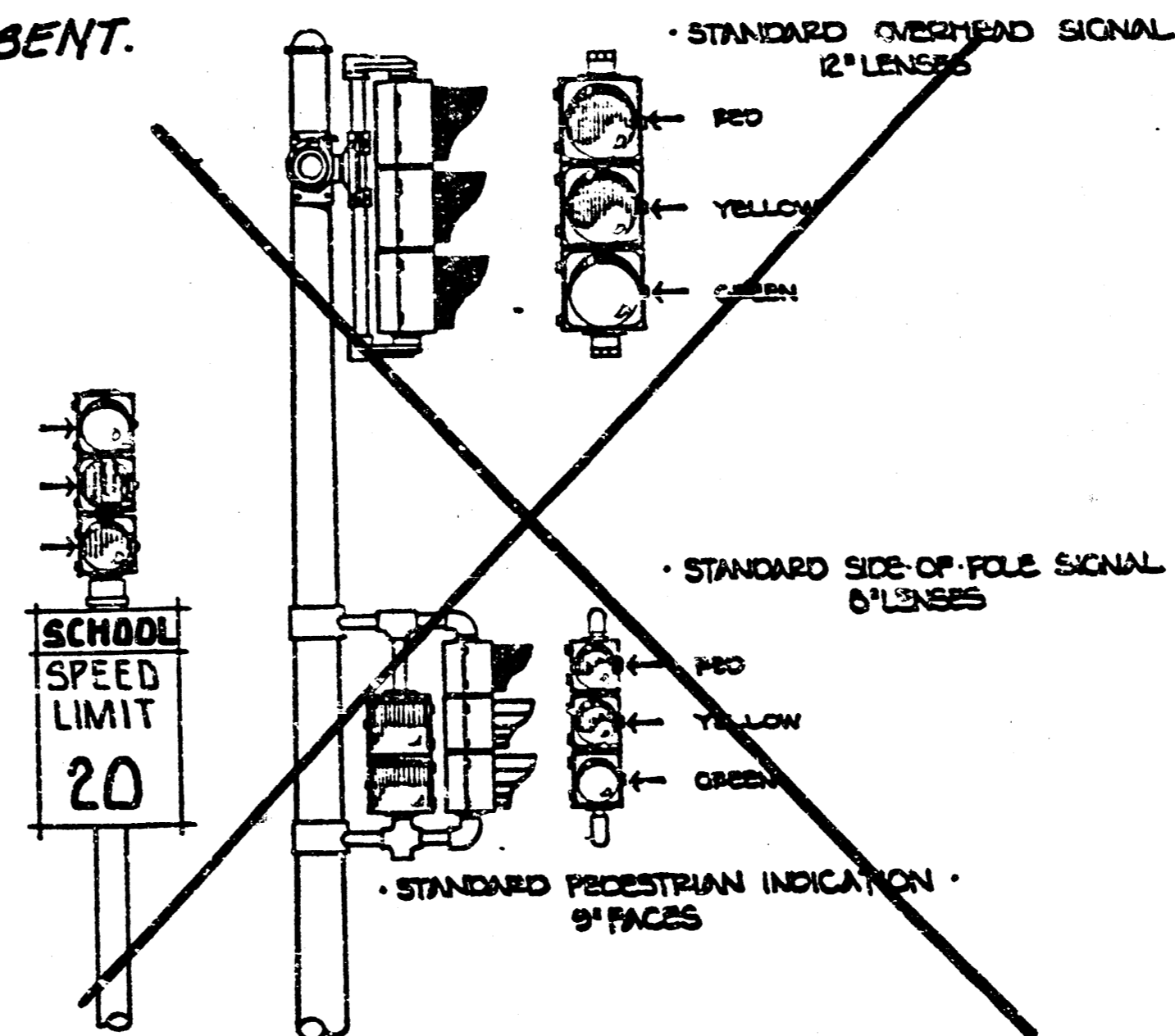
1. CONTACT THE TRAFFIC ENGINEERING SECTION PRIOR TO REVISION OF ANY SIGNAL POLE, CONTROLLER, PEDESTAL, SERVICE SKELFOLD, AND/OR CONDUIT.
2. CONDUIT TO BE PULLED OR JACKED UNDER EXISTING PAVEMENT INCLUDING SIDEWALKS, DRIVE APPROACHES, ETC. UNLESS OTHERWISE NOTED.
3. TRAFFIC TO BE CARRIED THROUGH CONSTRUCTION.
4. STANDARD CONSTRUCTION SIGNING AS OUTLINED IN THE SUBSIDIARY MANUALS OF THE CITY OF WICHITA AND THE MANUAL ON UNIFORM TRAFFIC CONTROL DEVICES, SHALL BE INSTALLED AND MAINTAINED THROUGHOUT ALL PHASES OF CONSTRUCTION ON THIS PROJECT.
5. THE CONTRACTOR/OR FIELD ENGINEER SHALL CONTACT ALL UTILITY COMPANIES WHICH MIGHT BE AFFECTED BY THE INSTALLATION OF THE TRAFFIC SIGNALIZATION PRIOR TO ANY UNDERGROUND INSTALLATION AND REQUEST THEIR ASSISTANCE IN LOCATING UNDERGROUND PLANTS.
6. THE CITY OF WICHITA SHALL REMOVE EXISTING TRAFFIC SIGNAL EQUIPMENT (EXCEPT AS OTHERWISE NOTED).
7. SIGNAL INSTALLATION, WHEEL CHAIR RAMPS, WALK SECTION, ETC. TO BE INSTALLED AS PER ENGINEERING SPECIFICATIONS.

NOTE: USE CAUTION WHEN TRENCHING - UNDERGROUND UTILITIES MAY BE PRESENT.



STANDARD VARIABLE MESSAGE SIGNAL LENSES

- YELLOW
- BLANK
- YELLOW

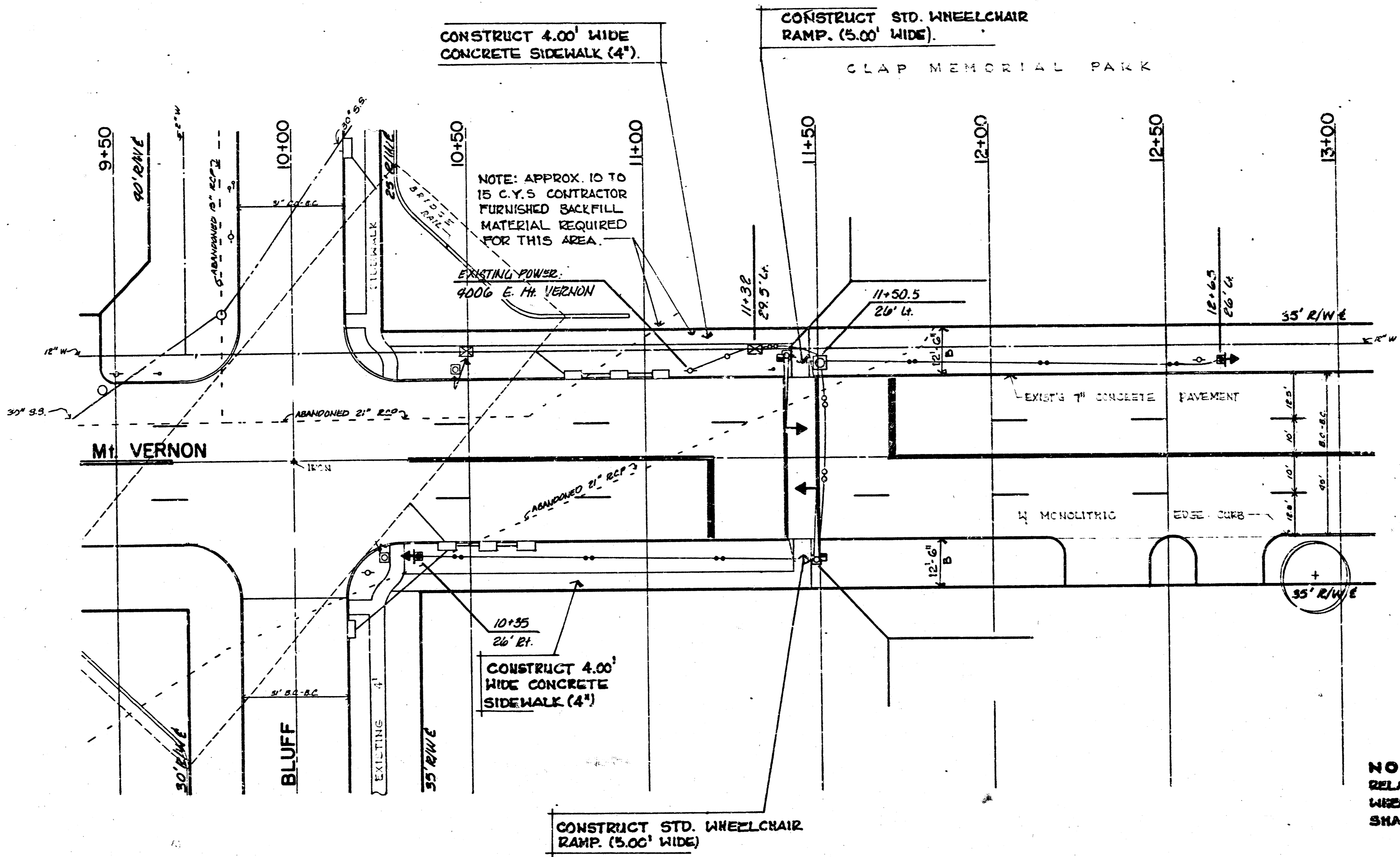


LEGEND:

- ⊕ SIGNAL INSTALLATION (BASE, POLE, MASTARM)
- ⬆ TRAFFIC SIGNAL
- ⊞ PEDESTRIAN INDICATION
- ⊞ V.M.S. INSTALLATION
- ⊞ SERVICE BOX
- ⊞ CONTROLLER - PEDESTAL MOUNT
- 3/4" CONDUIT
- 1 1/4" CONDUIT
- 1.0" CONDUIT
- 2.0" CONDUIT
- ⊞ PROPOSED REMOVAL
- ⊞ PROPOSED CONSTRUCTION



<b>SIDEWALKS</b>		
PROJECT DESCRIPTION		
<b>Mt. VERNON bet. GREEN ACRES &amp; ROANOKE SCHOOL X-WALK SIGNALIZATION</b>		
- BOOTH ELEMENTARY -		
PROJECT NUMBER		
472 76 355 80768 000 000 001		
BOOK NO.	APPROVED BY	DATE NOV. '87
DRAWN BY JD		REVISED
CITY OF WICHITA DEPARTMENT OF PUBLIC WORKS		
TRAFFIC ENGINEER WM. G. MCKINLEY		SCALE 1"=20'

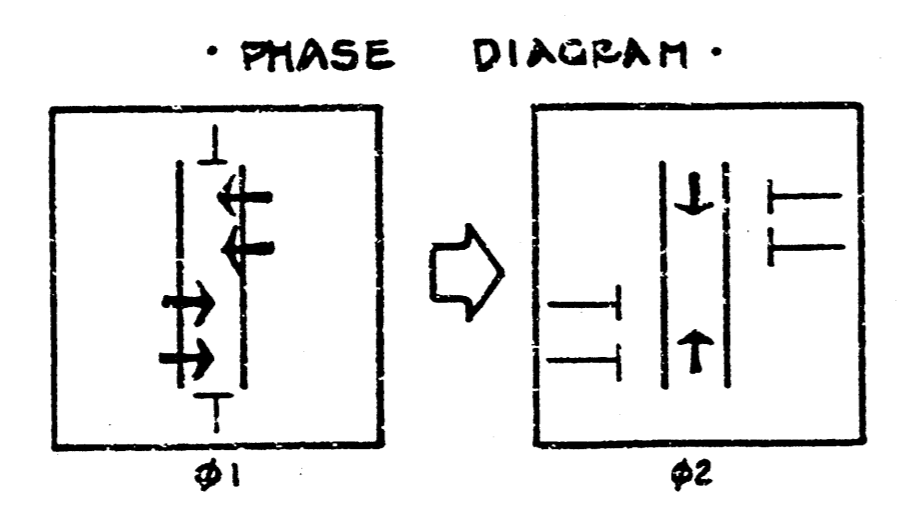


NOTE: INFORMATION SHOWN ON PLAN NOT DIRECTLY RELATED TO THE CONSTRUCTION OF SIDEWALKS AND WHEELCHAIR RAMPS IS NOT PART OF THIS CONTRACT AND SHALL BE CONSIDERED AS DELETED.

GENERAL NOTES:

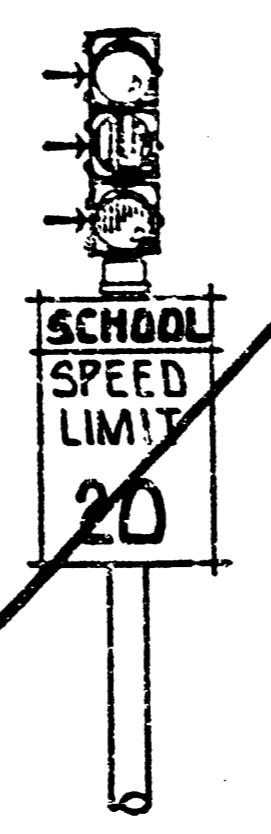
1. CONTACT THE TRAFFIC ENGINEERING SECTION PRIOR TO RELOCATION OF ANY SIGNAL POLE, CONTROLLER, PEDAL SERVICE BOX/LOOPS, AND/OR CONDUIT.
2. CONDUIT TO BE PUSHED OR JACKED UNDER EXISTING PAVEMENT INCLUDING SIDEWALK, DRIVE APPROACHES, ETC. UNLESS OTHERWISE NOTED.
3. TRAFFIC TO BE CARRIED THROUGH CONSTRUCTION.
4. STANDARD CONSTRUCTION SIGNING AS OUTLINED IN THE MAZECADE MANUAL OF THE CITY OF WICHITA AND THE MANUAL ON UNIFORM TRAFFIC CONTROL DEVICES, SHALL BE INSTALLED AND MAINTAINED THROUGHOUT ALL PHASES OF CONSTRUCTION ON THIS PROJECT.
5. THE CONTRACTOR/OF FIELD ENGINEER SHALL CONTACT ALL UTILITY COMPANIES WHICH MIGHT BE AFFECTED BY THE INSTALLATION OF THE TRAFFIC SIGNALIZATION PRIOR TO ANY UNDERGROUND INSTALLATION, AND REQUEST THEIR ASSISTANCE IN LOCATING UNDERGROUND PLANT.
6. THE CITY OF WICHITA SHALL REMOVE EXISTING TRAFFIC SIGNAL EQUIPMENT. (EXCEPT AS OTHERWISE NOTED).
7. SIGNAL INSTALLATION, WHEEL CHAIR RAMPS, WALK SECTION, ETC. TO BE INSTALLED AS PER ENGINEERING SPECIFICATIONS.

NOTE: USE CAUTION WHEN TRENCHING - UNDERGROUND UTILITIES MAY BE PRESENT.



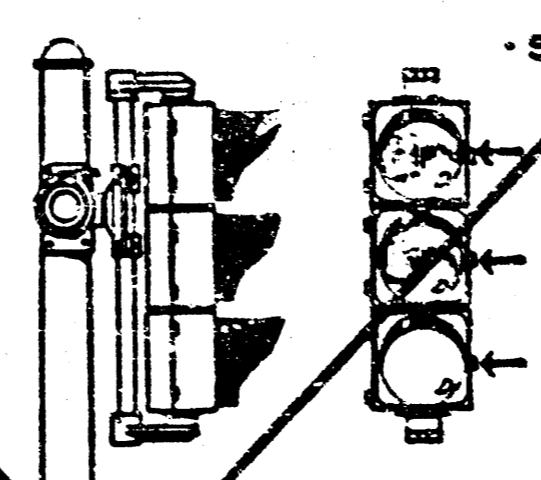
STANDARD VARIABLE MESSAGE SIGN - 8" LENSES

- YELLOW
- BLANK
- YELLOW



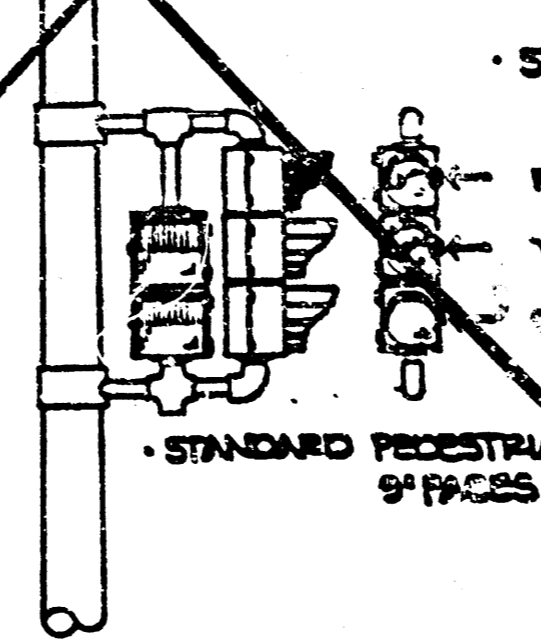
STANDARD OVERHEAD SIGNAL - 12" LENSES

- RED
- YELLOW
- GREEN

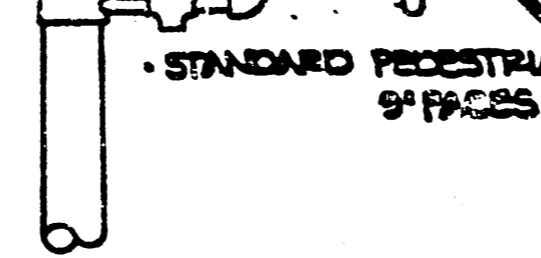


STANDARD SIDE-OF-POLE SIGNAL - 8" LENSES

- RED
- YELLOW
- GREEN



STANDARD PEDESTRIAN INDICATION - 9" FRCS



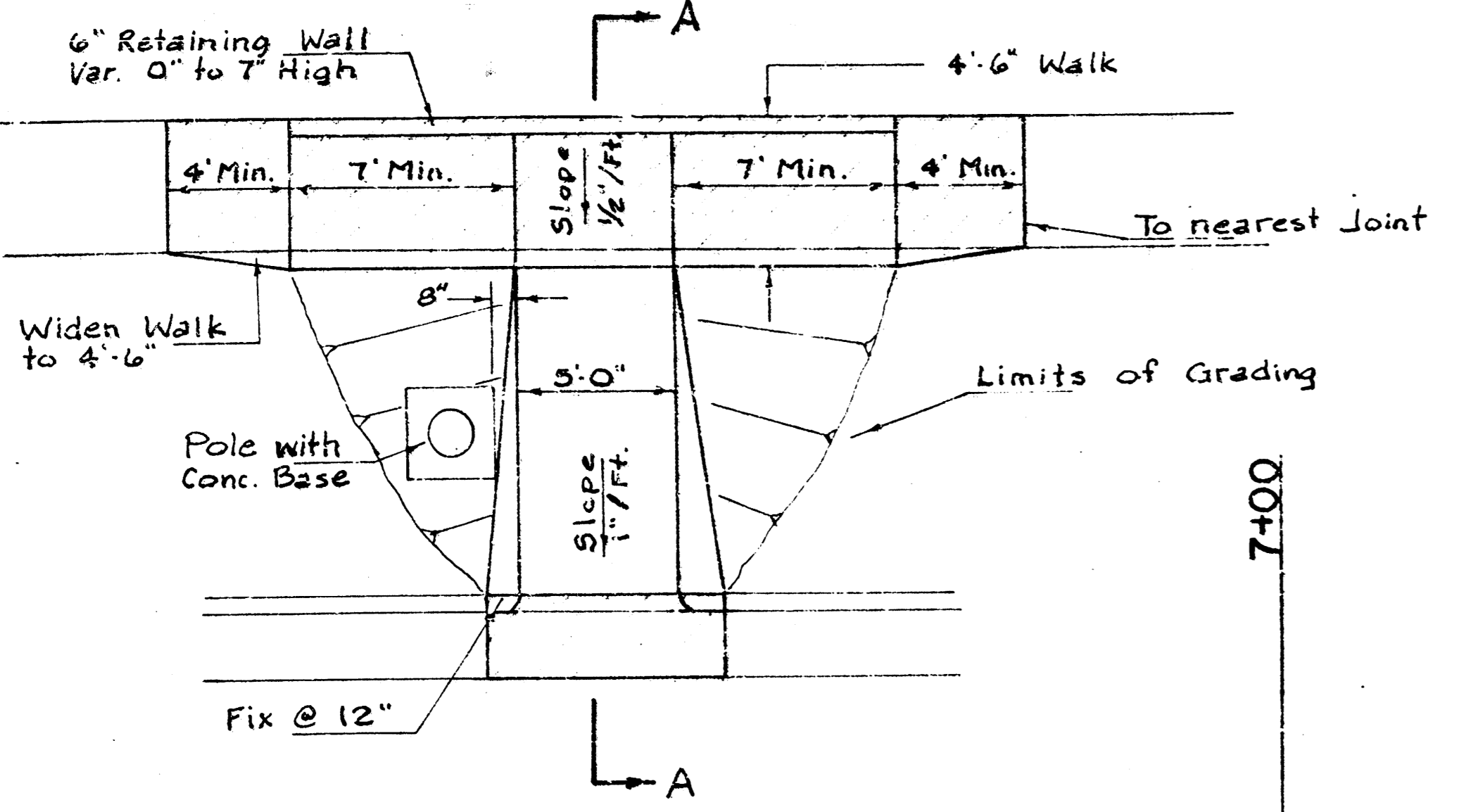
LEGEND:

- ⊕ SIGN-ALL INSTALLATION (BASE, POLE, MOUNTING)
- ⊙ TRAFFIC SIGNAL
- ⊙ PEDESTRIAN INDICATION
- ⊙ V.H.S. INSTALLATION
- ⊙ SERVICE BOX
- ⊙ CONTROLLER - PEDestal MOUNT
- 3/4" CONDUIT
- 1 1/4" CONDUIT
- 1.0" CONDUIT
- 2.0" CONDUIT
- ⊠ PROPOSED
- ⊡ REMOVAL
- ⊣ CONSTRUCTION

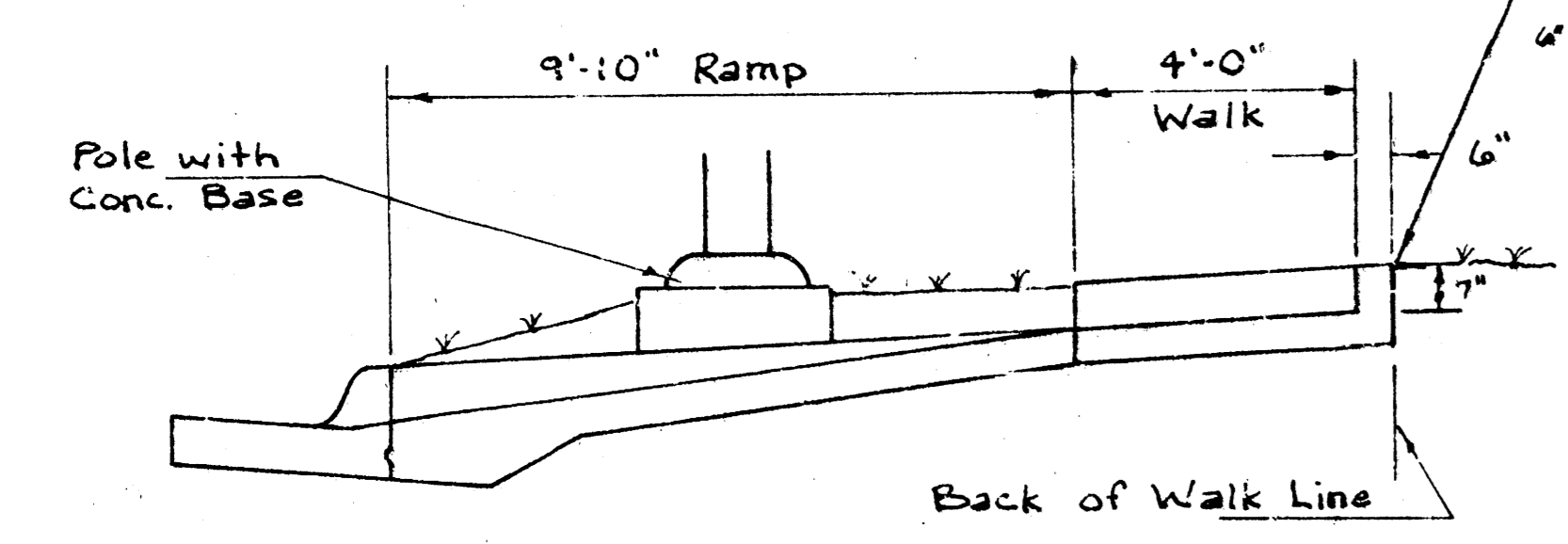


<b>SIDEWALKS</b>		
PROJECT DESCRIPTION		
<b>Mt. VERNON bet. BLUFF &amp; CRESTWAY</b>		
<b>SCHOOL X-WALK SIGNALIZATION</b>		
<b>• GRIFFITH ELEMENTARY •</b>		
PROJECT NUMBER		
472 76 355 80769 000 000 001		
BOOK NO.	APPROVED BY	DATE NOV. 87
DRAWN BY JD	REVISION	
CITY OF WICHITA		
DEPARTMENT OF PUBLIC WORKS		
TRAFFIC ENGINEER		SCALE
WM. G. MCKINLEY		1"=20'

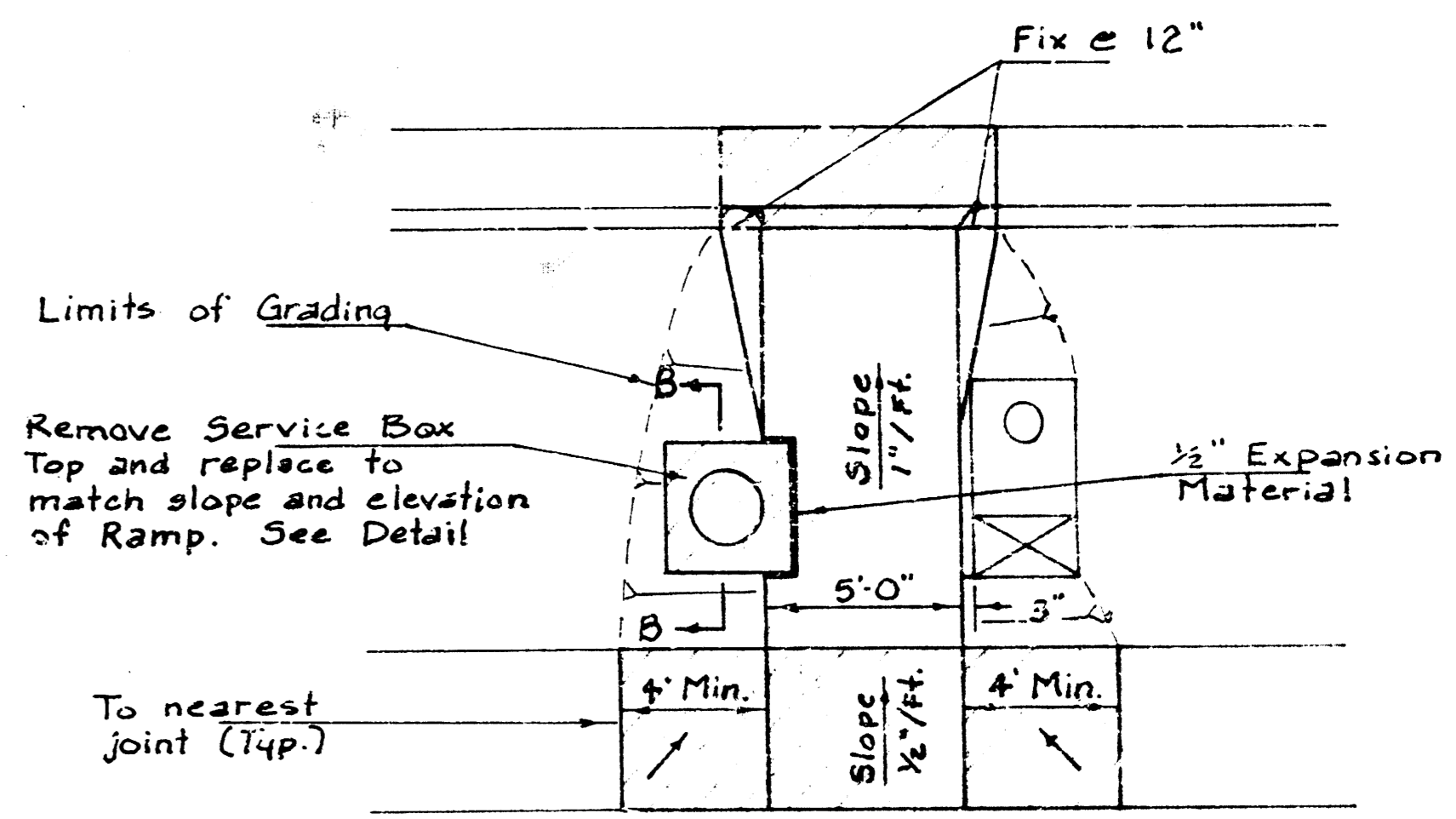
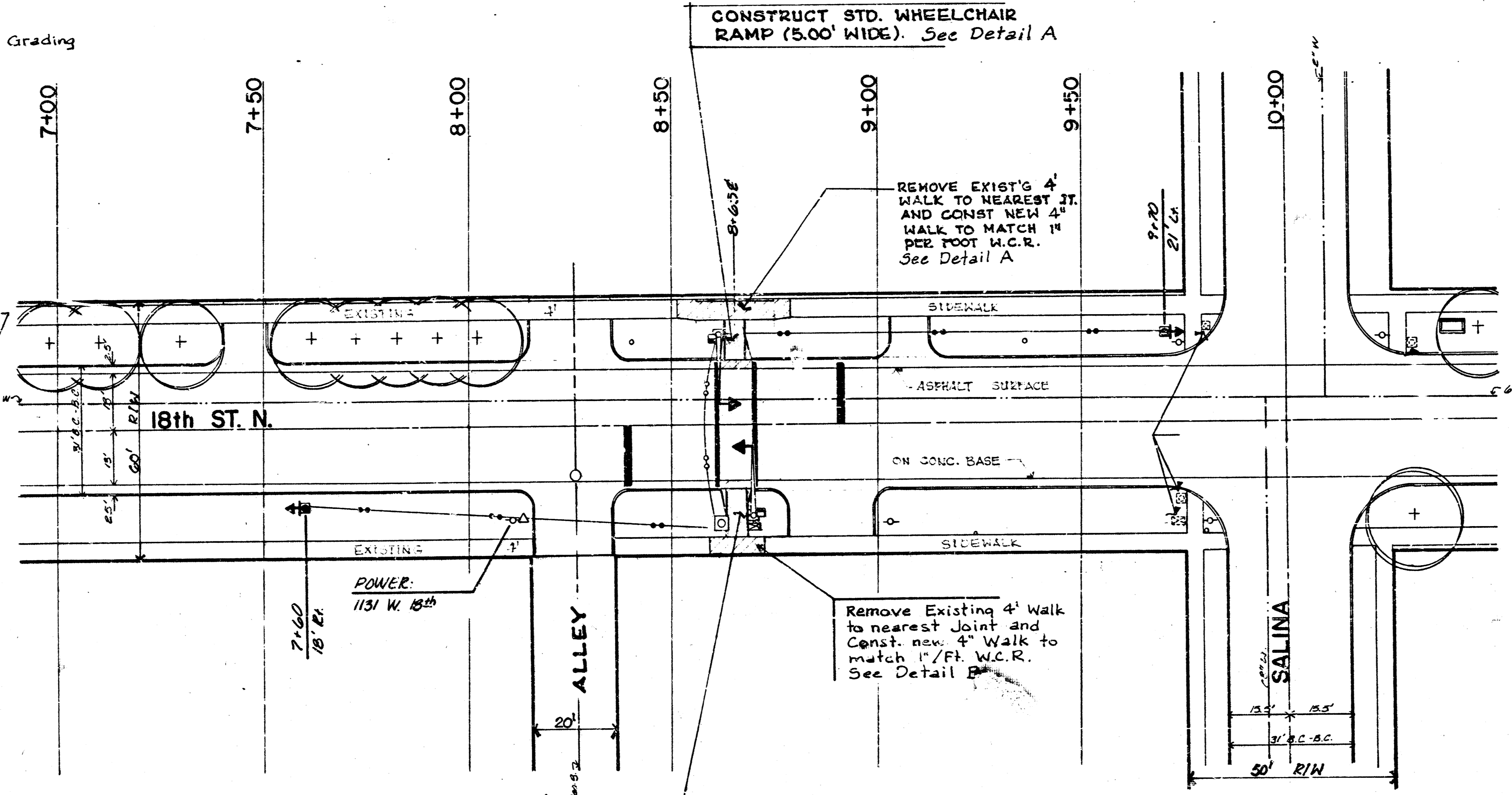
NOTE: INFORMATION SHOWN ON PLAN NOT DIRECTLY RELATED TO THE CONSTRUCTION OF SIDEWALKS AND WHEELCHAIR RAMPS IS NOT PART OF THIS CONTRACT AND SHALL BE CONSIDERED AS DELETED.



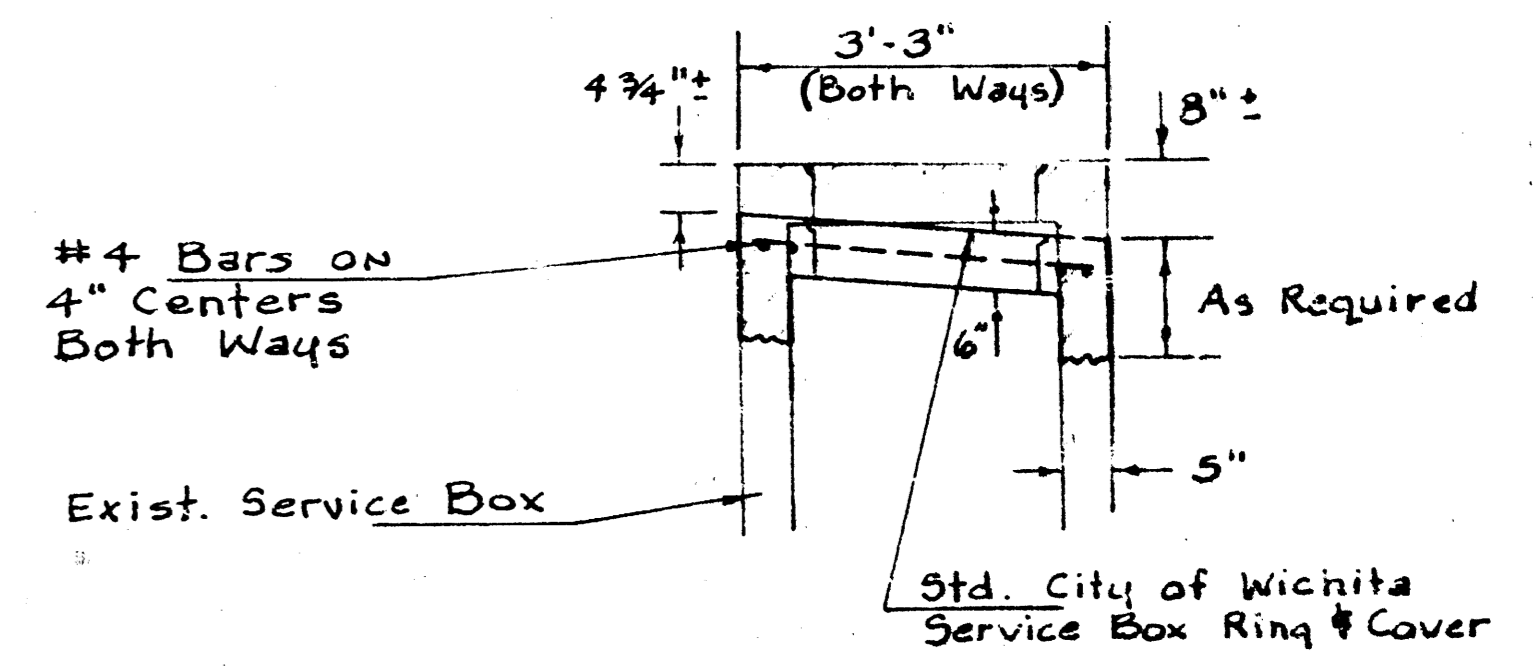
DETAIL A



SECTION A-A



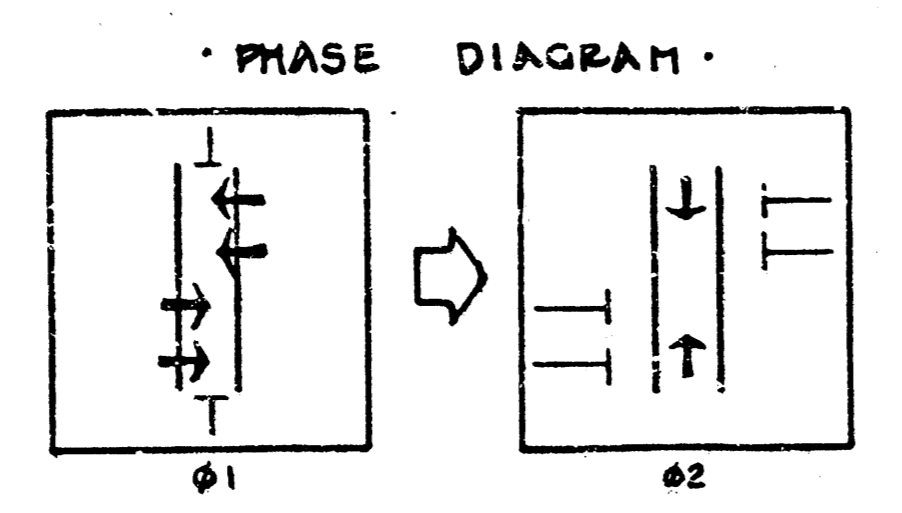
DETAIL B



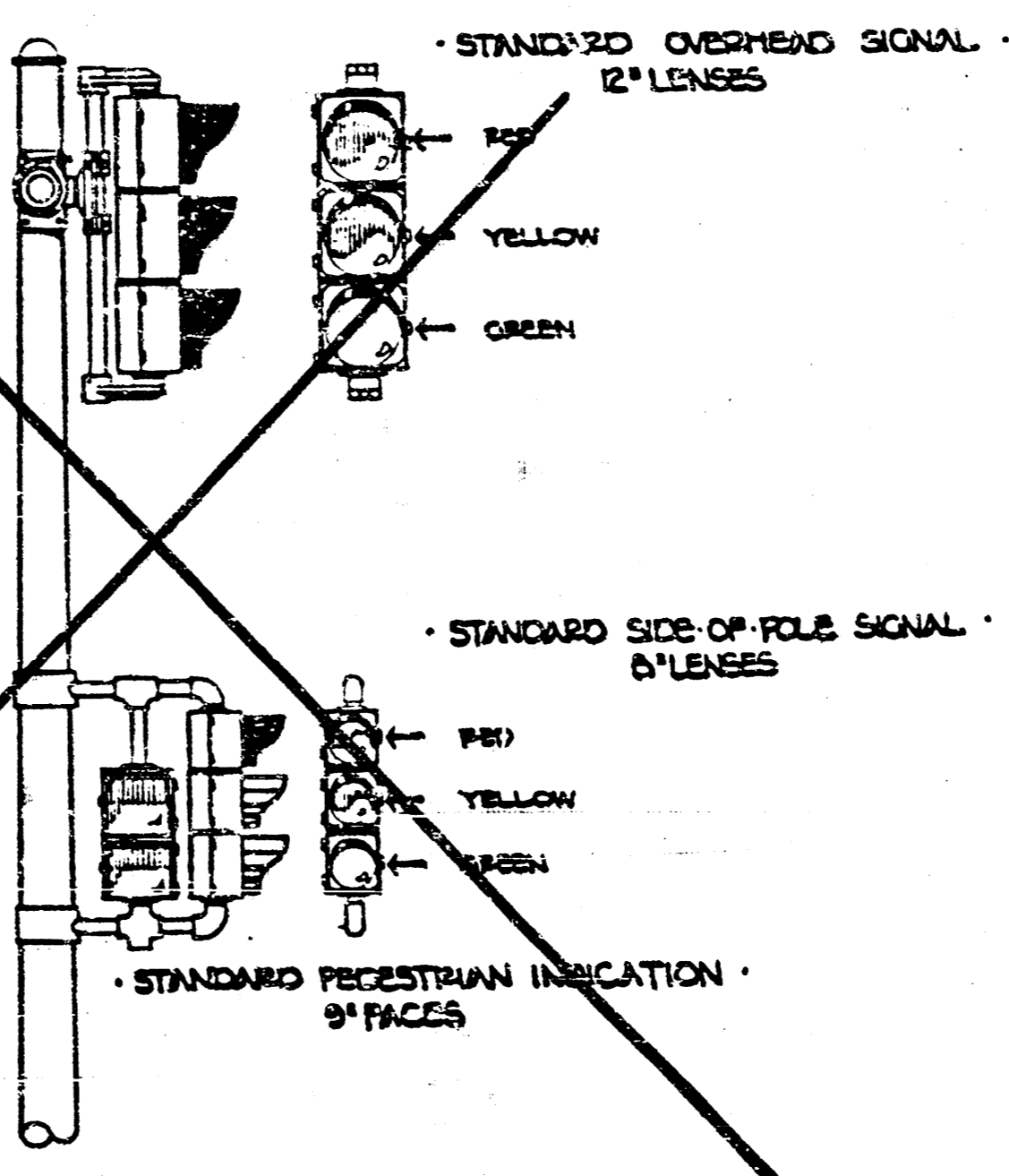
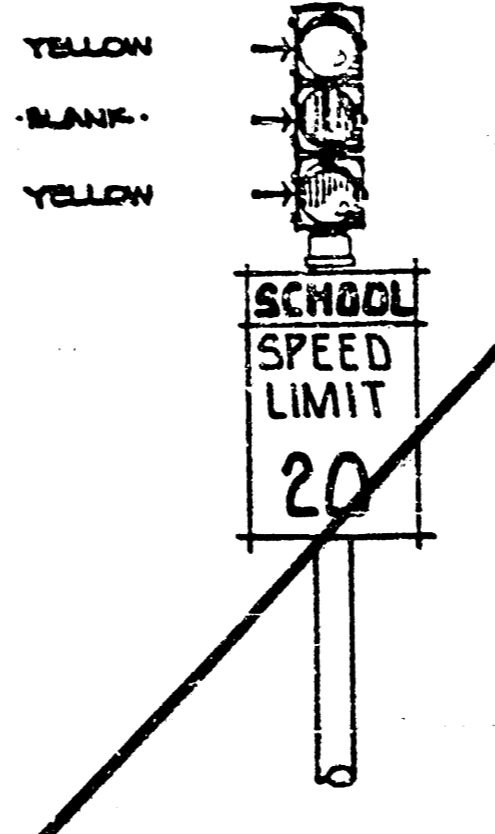
SECTION B-B

- GENERAL NOTES:**
- CONTACT THE TRAFFIC ENGINEERING SECTION PRIOR TO REMOVAL OF ANY SIGNAL POLE, CONTROLLER, PEDESTAL SIGNAL, SIGNALS, AND/OR CONDUIT.
  - CONDUIT TO BE PUSHED OR JACKED UNDER EXISTING PAVEMENT INCLUDING SIDEWALK, DRIVE APPROACHES, ETC. UNLESS OTHERWISE NOTED.
  - TRAFFIC TO BE CARRIED THROUGH CONSTRUCTION.
  - STANDARD CONSTRUCTION SIGNING AS OUTLINED IN THE BARRETT'S MANUAL OF THE CITY OF WICHITA AND THE MANUAL ON UNIFORM TRAFFIC CONTROL DEVICES SHALL BE INSTALLED AND MAINTAINED THROUGHOUT ALL PHASES OF CONSTRUCTION OF THIS PROJECT.
  - THE CONTRACTOR / OR FIELD ENGINEER SHALL CONTACT ALL UTILITY COMPANIES WHICH MIGHT BE AFFECTED BY THE INSTALLATION OF THE TRAFFIC SIGNALIZATION PRIOR TO ANY UNDERGROUND INSTALLATION AND REQUEST THEIR ASSISTANCE IN LOCATING UNDERGROUND PLANT.
  - THE CITY OF WICHITA SHALL REMOVE EXISTING TRAFFIC SIGNAL EQUIPMENT, (EXCEPT AS OTHERWISE NOTED).
  - SIGNAL INSTALLATION, WHEEL CHAIR RAMPS, WALK SECTIONS, ETC. TO BE INSTALLED AS PER ENGINEERING SPECIFICATIONS.

NOTE: USE CAUTION WHEN TRENCHING - UNDERGROUND UTILITIES MAY BE PRESENT.

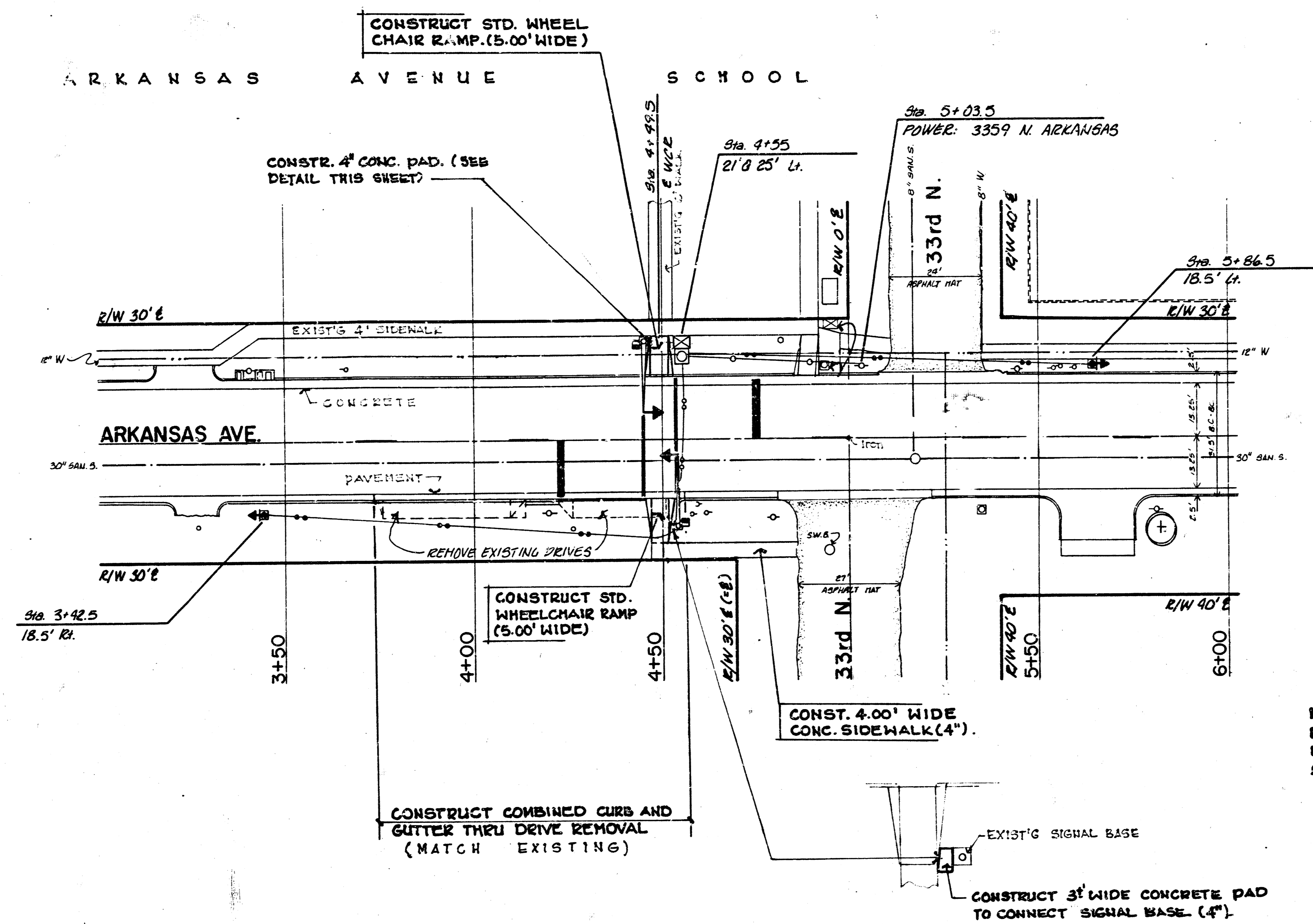


STANDARD VARIABLE MESSAGE SIGN - 8' LENSES



- LEGEND:**
- SIGNAL INSTALLATION (BASE, POLE, MASTARM)
  - TRAFFIC SIGNAL
  - PEDESTRIAN INDICATION
  - V.H.S. INSTALLATION
  - SERVICE BOX CONTROLLER - PEDESTAL MOUNT
  - 1/4" CONDUIT
  - 1/2" CONDUIT
  - 1.0" CONDUIT
  - 2.0" CONDUIT
  - PROPOSED REMOVAL
  - PROPOSED CONSTRUCTION

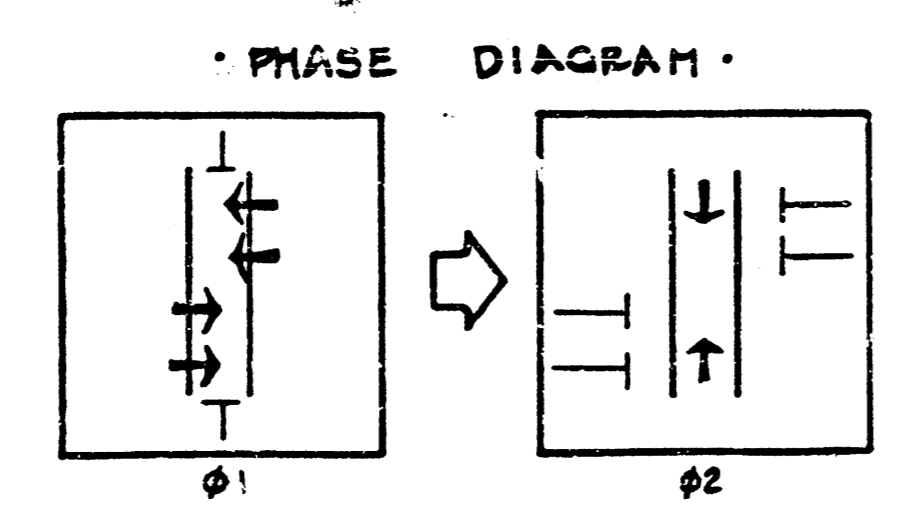
SIDEWALKS	
PROJECT DESCRIPTION	
18th ST. N. between SALINA & PAYNE	
SCHOOL X-WALK SIGNALIZATION	
WOODLAND ELEMENTARY	
PROJECT NUMBER	
472 76 355 80768 000 000 001	
BOOK NO.	APPROVED BY
DRAWN BY JD	DATE NOV. 87
CITY OF WICHITA	
DEPARTMENT OF PUBLIC WORKS	
TRAFFIC ENGINEER	SCALE
WM. G. MCKINLEY	1" = 20'



NOTE: INFORMATION SHOWN ON PLAN NOT DIRECTLY RELATED TO THE CONSTRUCTION OF SIDEWALKS AND WHEELCHAIR RAMPS IS NOT PART OF THIS CONTRACT AND SHALL BE CONSIDERED AS DELETED.

- GENERAL NOTES:**
- ~~CONTACT THE TRAFFIC ENGINEERING SECTION PRIOR TO RELOCATION OF ANY SIGNAL POLE, CONTROLLER, PEDESTAL, SERVICE BOX/LOOPS, AND/OR CONDUIT.~~
  - ~~CONDUITS TO BE PUSHED OR JACKED UNDER EXISTING PAVEMENT INCLUDING SIDEWALK, DRIVE APPROACHES, ETC. UNLESS OTHERWISE NOTED.~~
  - ~~TRAFFIC TO BE CARRIED THROUGH CONSTRUCTION.~~
  - ~~STANDARD CONSTRUCTION SIGNING AS OUTLINED IN THE BARRICADE MANUAL OF THE CITY OF WICHITA AND THE MANUAL ON UNIFORM TRAFFIC CONTROL DEVICES, SHALL BE INSTALLED AND MAINTAINED THROUGHOUT ALL PHASES OF CONSTRUCTION ON THIS PROJECT.~~
  - ~~THE CONTRACTOR / FIELD ENGINEER SHALL CONTACT ALL UTILITY COMPANIES WHICH MIGHT BE AFFECTED BY THE INSTALLATION OF THE TRAFFIC SIGNALIZATION PRIOR TO ANY UNDERGROUND INSTALLATION. PLEASE REQUEST THE ASSISTANCE IN LOCATING UNDERGROUND PLANT.~~
  - ~~THE CITY OF WICHITA SHALL REMOVE EXISTING TRAFFIC SIGNAL EQUIPMENT (EXCEPT AS OTHERWISE NOTED).~~
  - ~~SIGNAL INSTALLATION, WHEEL CHAIR RAMPS, WALK SECTION, ETC. TO BE INSTALLED AS PER ENGINEERING SPECIFICATIONS.~~

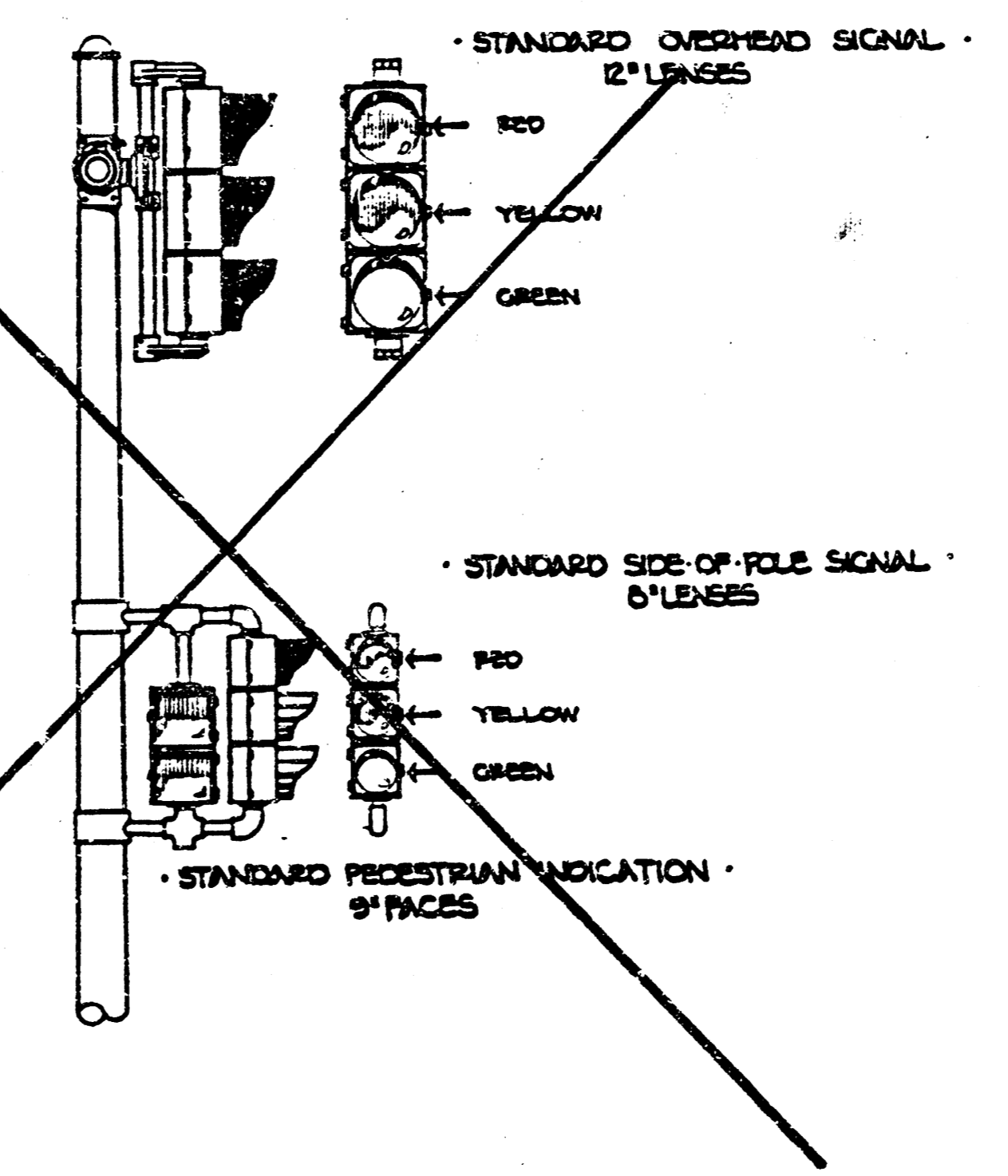
NOTE: USE CAUTION WHEN TRENCHING - UNDERGROUND UTILITIES MAY BE PRESENT.



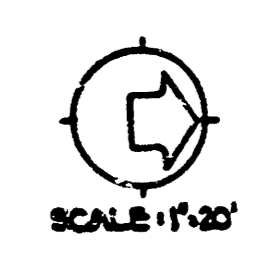
STANDARD VARIABLE MESSAGE SIGN - 3' LENSES



SCHOOL SPEED LIMIT 20



- LEGEND:**
- Signal installation (base, pole, mastarm)
  - Traffic signal
  - Pedestrian indication
  - V.M.S. installation
  - Service box
  - Controller - pedestal mount
  - 3/4" CONDUIT
  - 1 1/4" CONDUIT
  - 1.0" CONDUIT
  - 2.0" CONDUIT
  - Proposed construction
  - Proposed removal



**SIDEWALKS**  
PROJECT DESCRIPTION  
**ARKANSAS bet. 32nd & 33rd Sts N.**  
**SCHOOL X-WALK SIGNALIZATION**  
**ARKANSAS AVE. ELEMENTARY**

PROJECT NUMBER  
472 76 355 80768 000 000 001

BOOK NO. \_\_\_\_\_ APPROVED BY \_\_\_\_\_ DATE AUG. '87  
DRAWN BY JD \_\_\_\_\_ REVISED S.B.S. JD

CITY OF WICHITA  
DEPARTMENT OF PUBLIC WORKS  
TRAFFIC ENGINEER  
WM. G. MCKINLEY  
SCALE  
1" = 20'