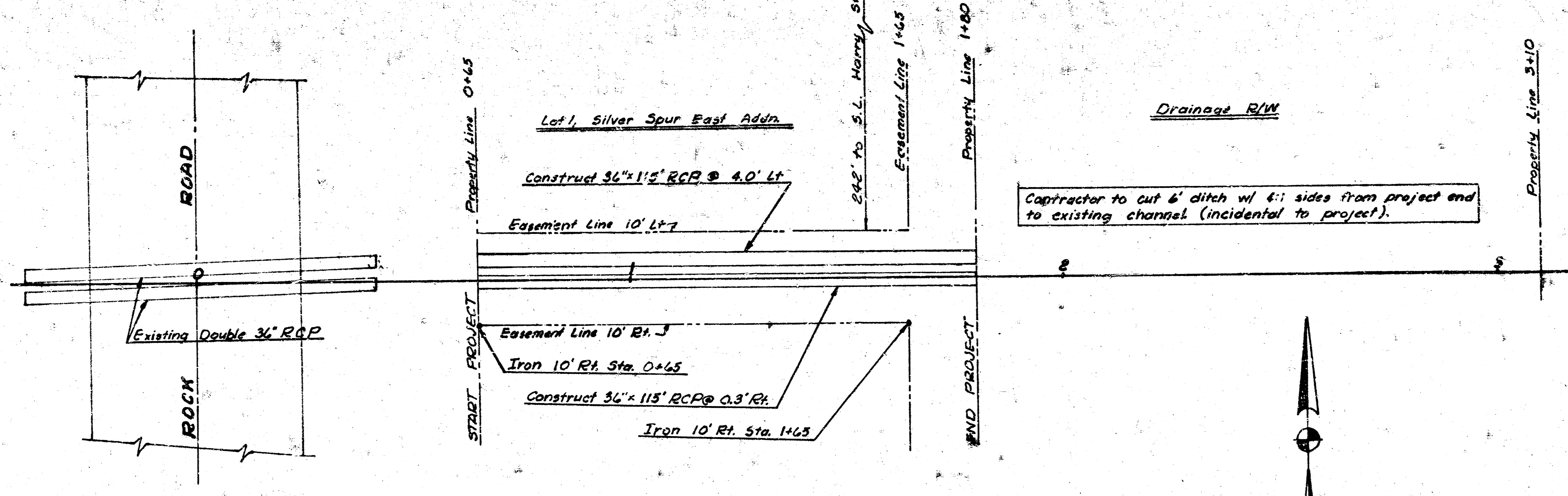


B.M. 144.61 "x" on easement at Sta. 0+00

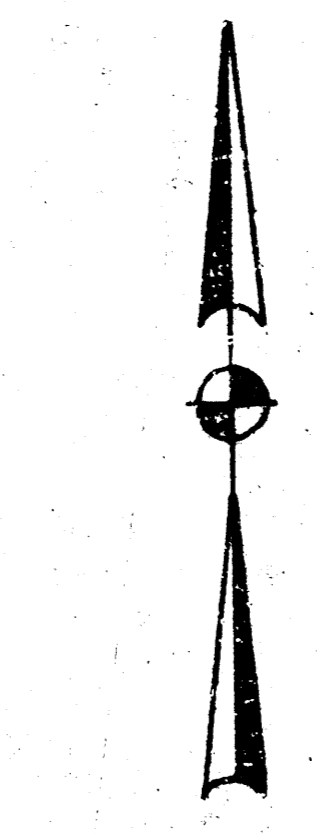
HARRY STREET

NOTE TO CONTRACTOR
 This project will be constructed under the supervision of the CITY ENGINEER and conforming to the SPECIFICATIONS of the CITY OF WICHITA. The CONTRACTOR will reimburse the City of Wichita for all cost of Engineering, Plans, and Inspection.

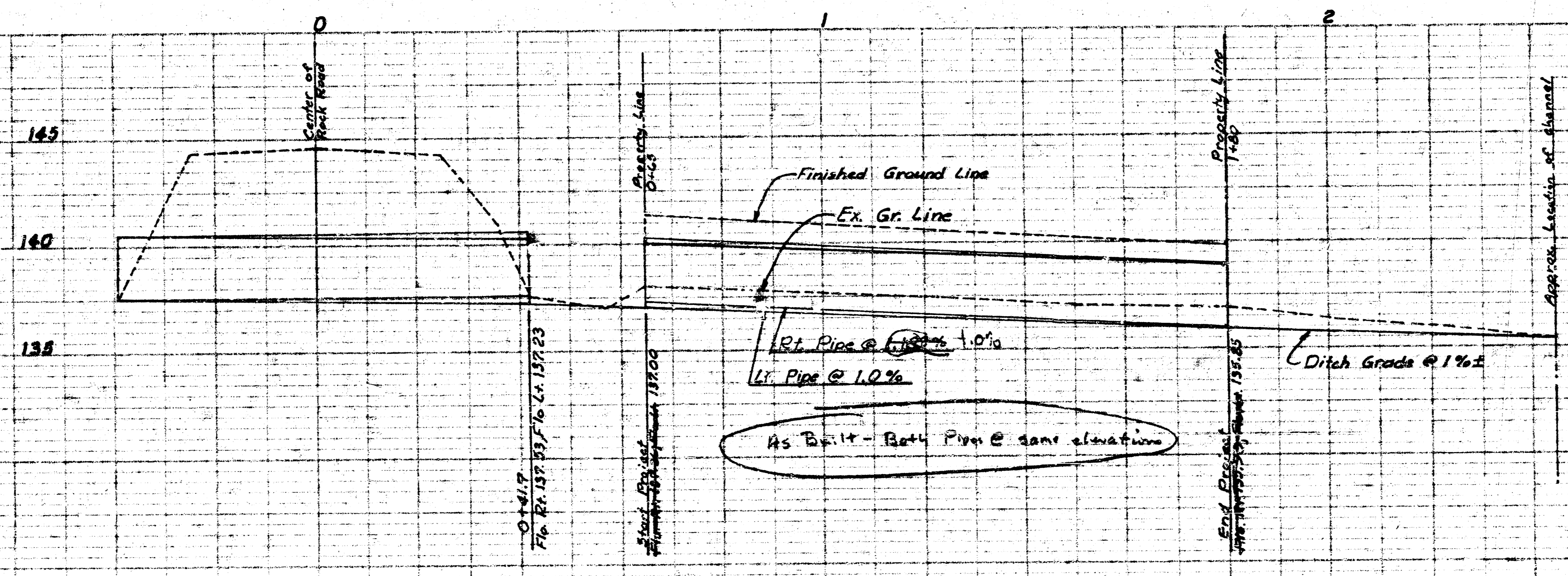


Contractor to fill and compact earth to a depth of 1' over pipe. (to be included in bid for pipe).

Contractor to cut 6' ditch w/ 4:1 sides from project end to existing channel. (incidental to project).

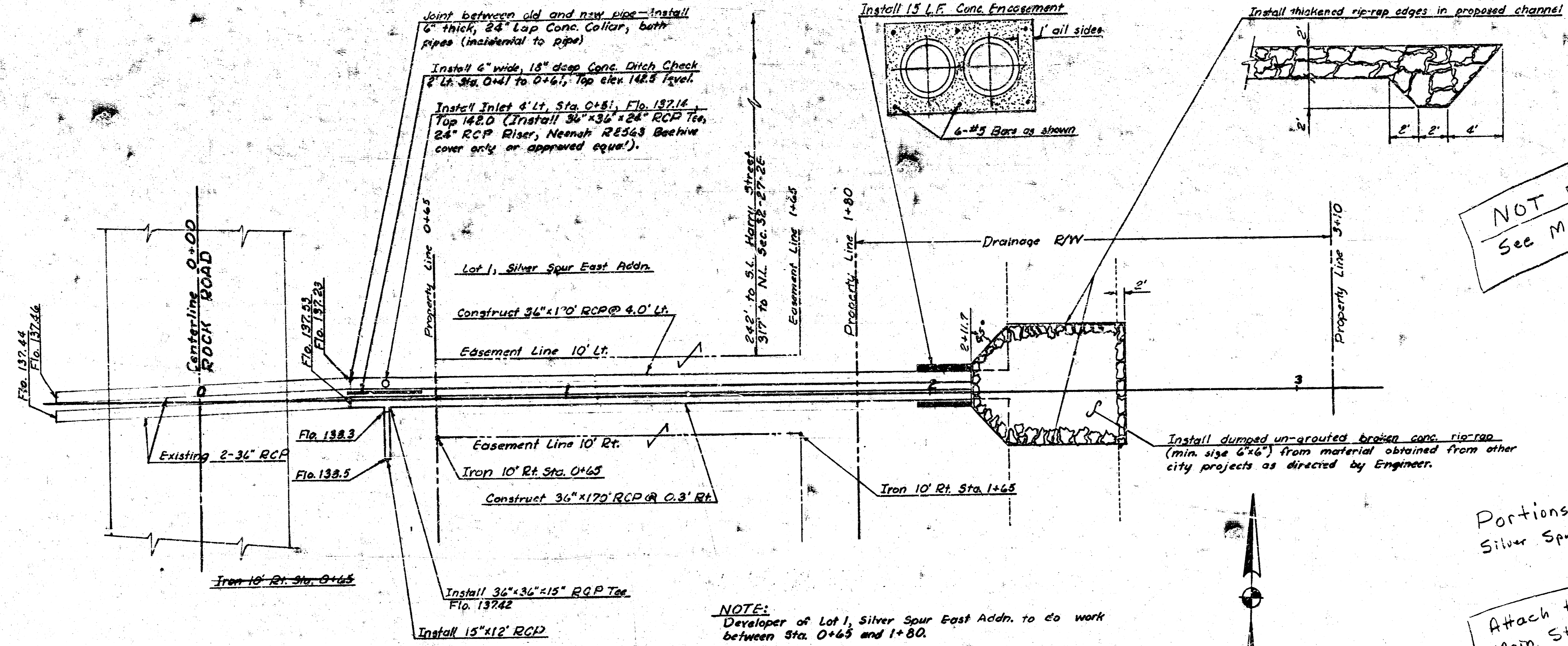
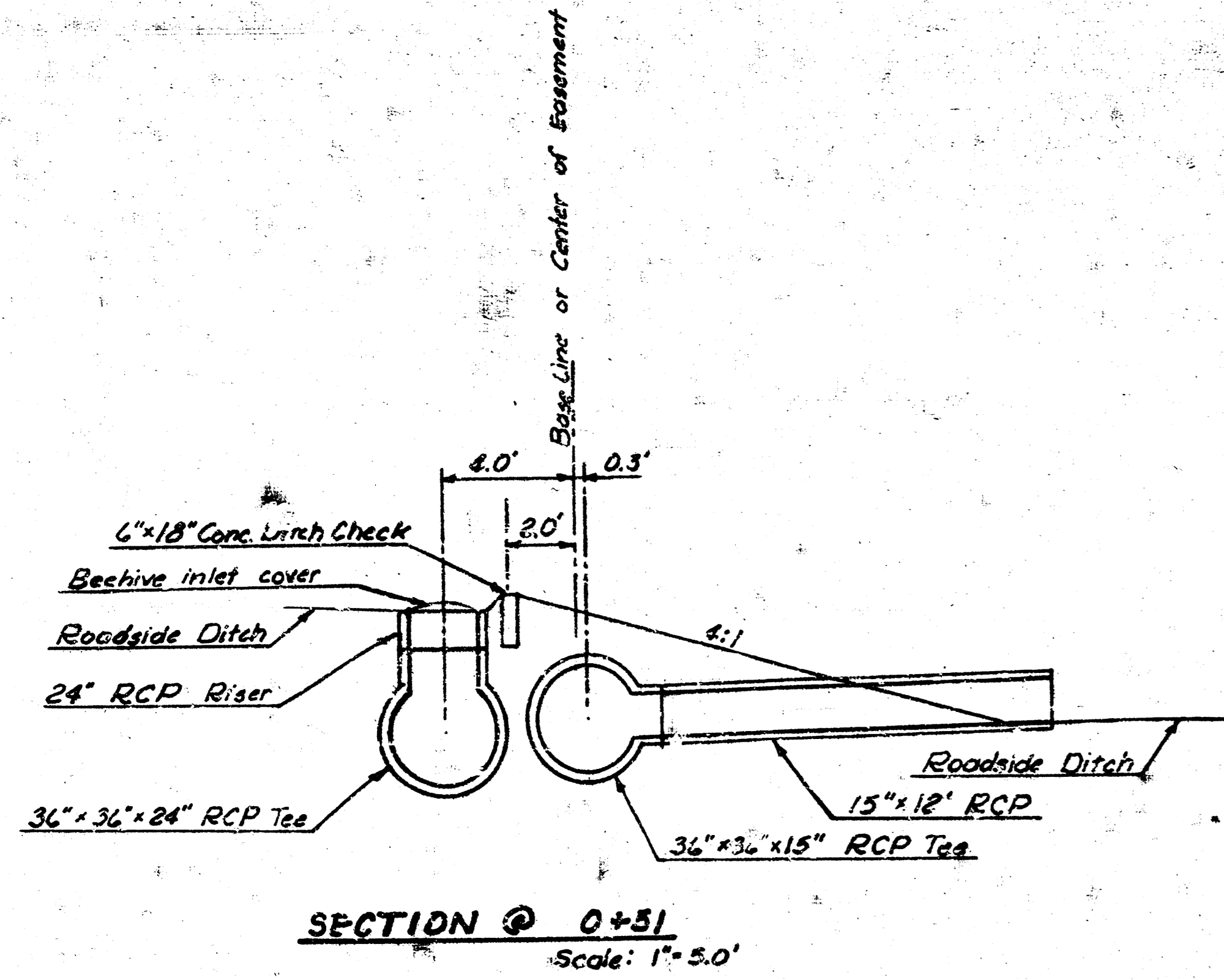


SCALE: Hor. 1"=20'
 Ver. 1"=5'



**MAIN STORM DRAIN
 LOT 1, SILVER SPUR EAST
 ADDITION**
 R.W. Linn, City Engineer
 City of Wichita
 Date: June, 1972
 Project No. AAKB 502023
 Private Project

HARRY STREET



NOTE:
Developer of Lot 1, Silver Spur East Addn. to do work between Sta. 0+65 and 1+80.
Work between Sta. 0+24 to 0+65 and Sta. 1+80 to 2+54 by separate contract.

SCALE: Hor. 1"=20'
Ver. 1"=5'

NOT BUILT
See MAIN STORM DR

Portions east & west
Silver Spur East Addn not
Attach to and file with
Main Storm Drain # 15
for future reference

