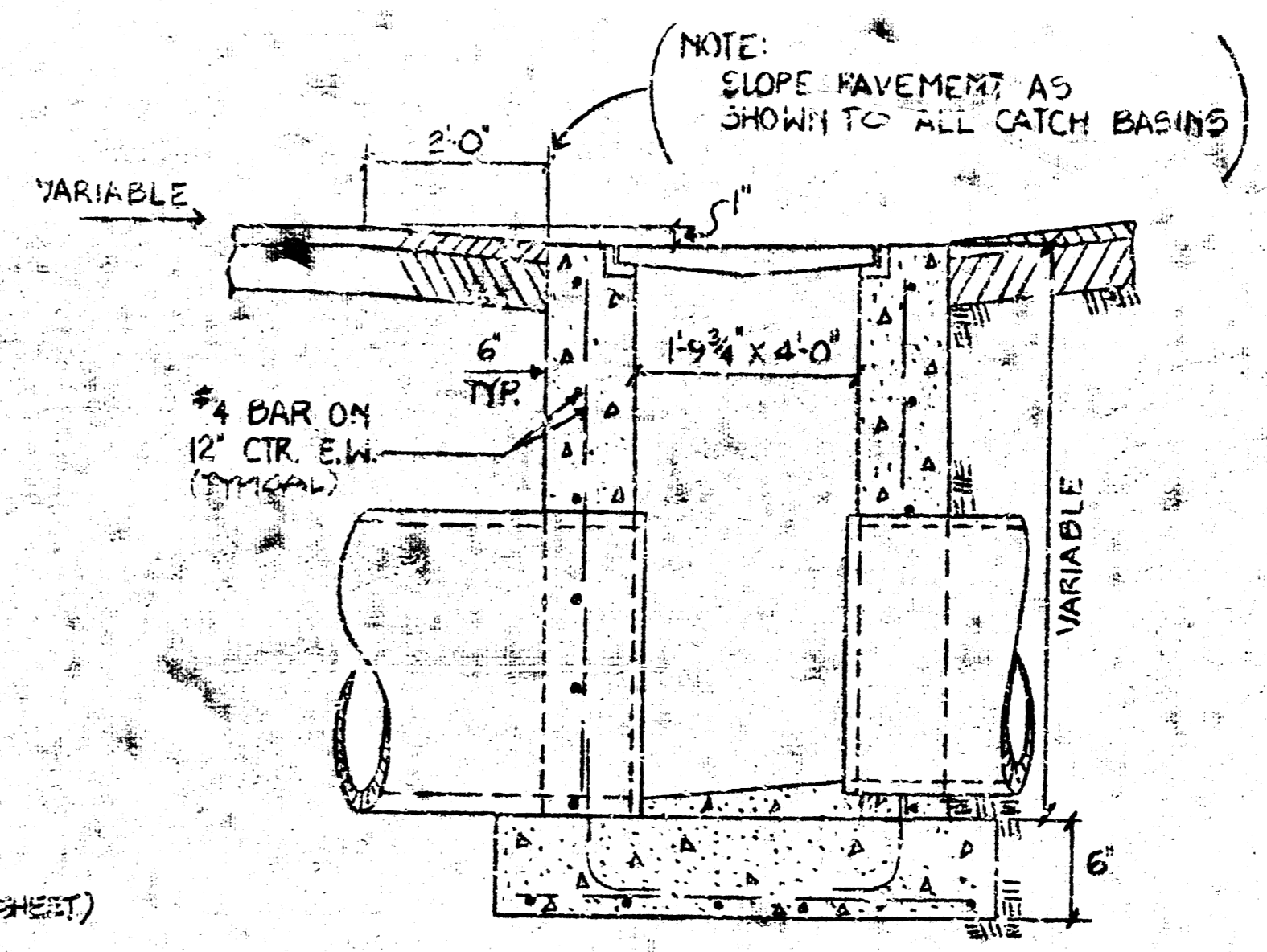
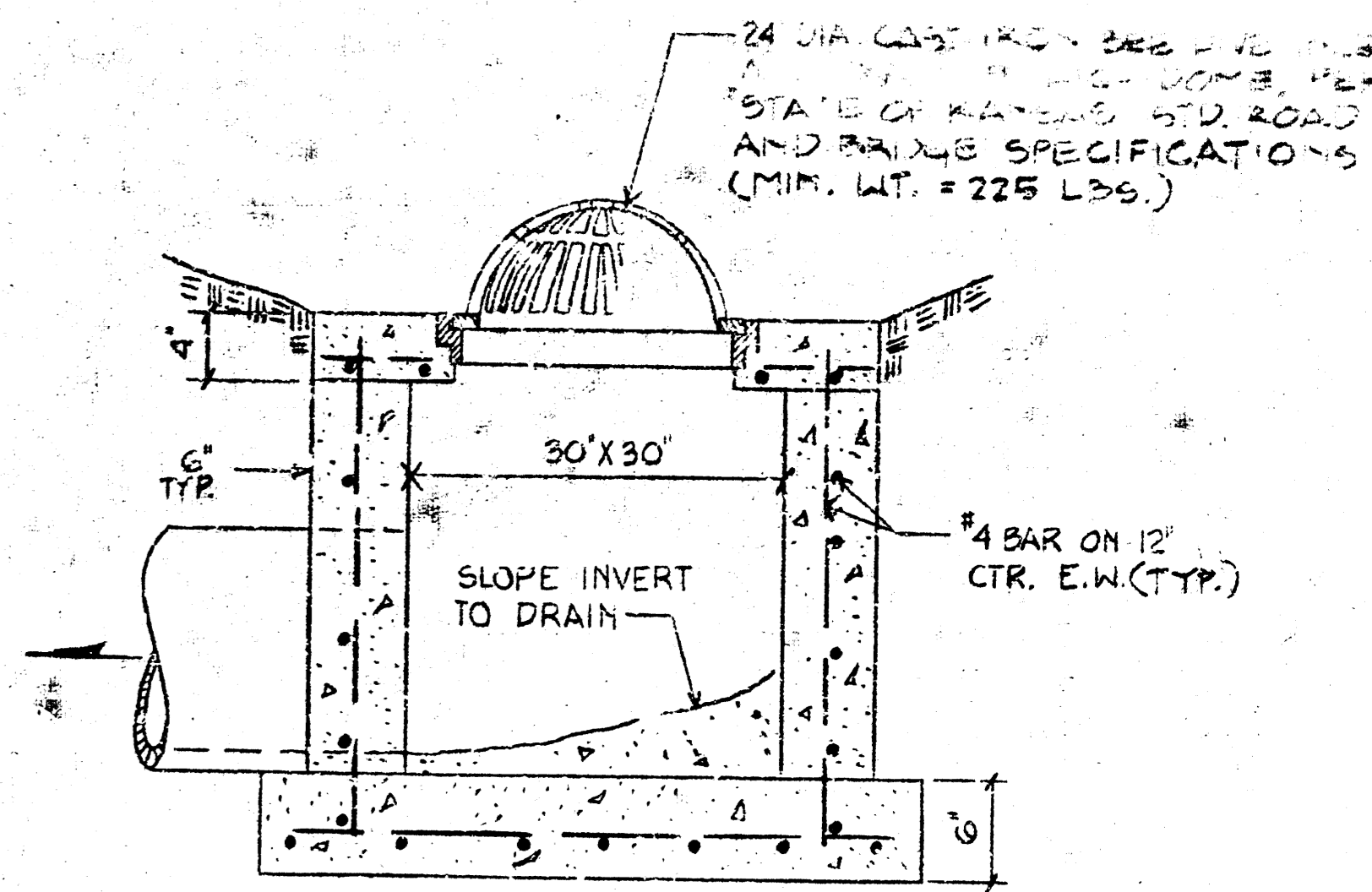


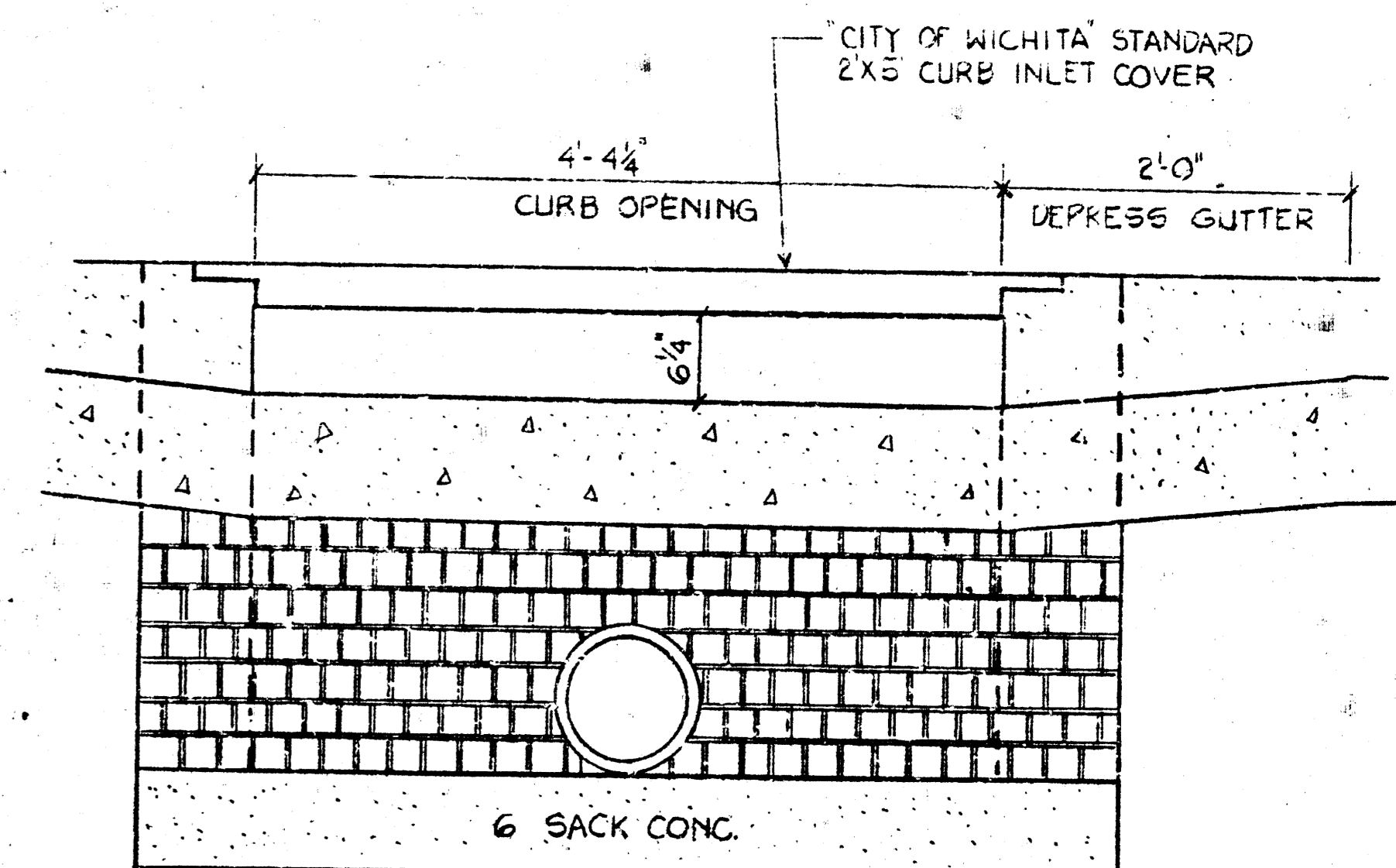
1a PLAN VIEW
NO SCALE



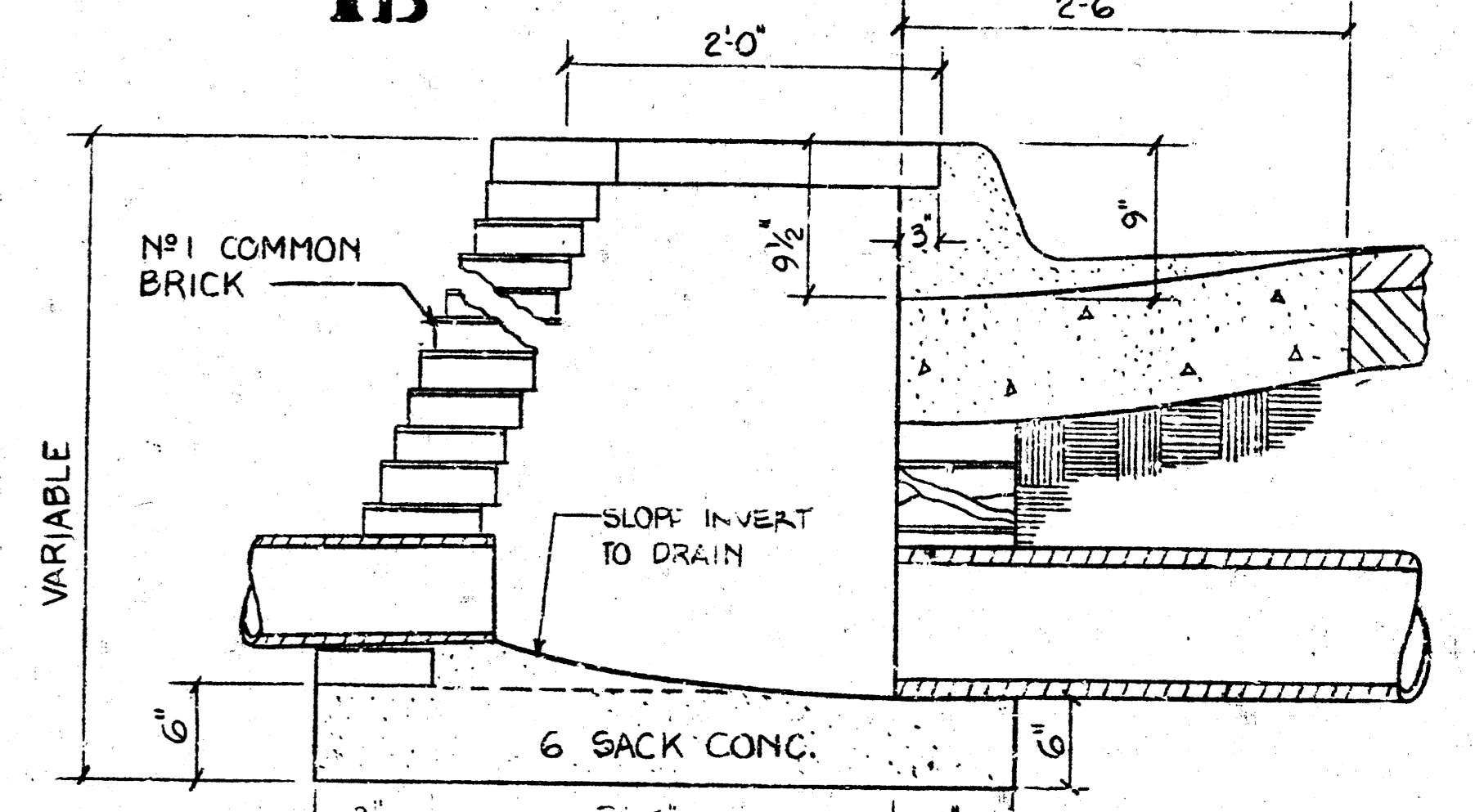
D CATCH BASIN DETAIL
NO SCALE



C YARD INLET DETAIL
NO SCALE



1b FRONT VIEW



B CURB INLET DETAIL
NO SCALE

- GENERAL NOTES:**
1. THE CITY OF WICHITA IS IN THE PROCESS OF PREPARING PLANS FOR THE WIDENING OF HARRY STREET AND INSTALLATION OF A STORM SEWER IN HARRY STREET. UPON COMPLETION OF THE "CITY" PLANS, THIS SHEET SHALL BE REVISED AND COORDINATED AS REQUIRED.
 2. SEE SHEET SG-3 FOR STORM SEWER PROFILES.
 3. SEE SHEET SG-2 FOR ENLARGED GRADING PLAN OF ALL DRIVE ENTRANCES, AND THE NORTH, WEST, AND SOUTH PARKING AREAS.
 4. LANDSCAPE CONTRACTOR TO DO FINAL LEVELING ON ALL PLANTED AREAS.
 5. REFER TO BUILDING PLANS FOR EXACT LOCATION OF ROOF LEADER CONNECTIONS.
 6. MANHOLES, CATCH BASINS, ETC., ARE LOCATED FROM THE BASE POINT, ASSUMING THE WEST PROPERTY LINE AS TRUE NORTH.

ACCEPTED
This drawing is accepted as conforming satisfactorily to CFS design concept for this project. This acceptance does not constitute a release of any right of the City of Wichita or its agents, nor does it constitute a warranty of any kind or a professional quality of the work shown hereon.
A. G. ...
DATE 8-5-72

Storm Sewer U.S. Postal Facility
Plan # DBK W 705002
1" = 30'-0"

A SITE GRADING & STORM SEWER PLAN

LEGEND
 --- EXISTING CONTOUR
 - - - NEW CONTOUR
 --- EXIST. CULVERT
 --- DIRECTION OF FLOW
 --- TOP OF DUM
 --- EXIST. ELEV.
 --- EXIST. SLOPE

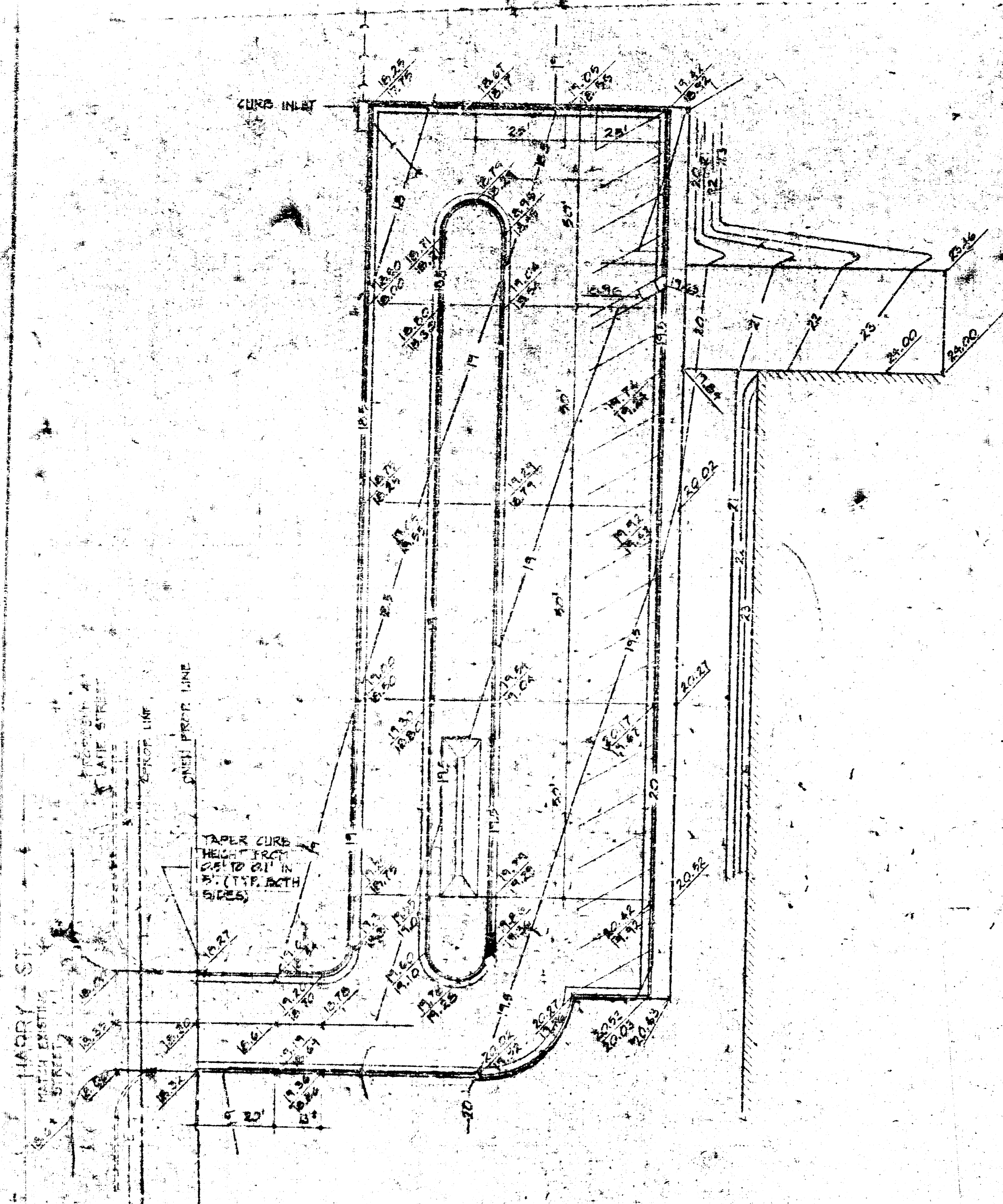
REVISIONS			
NUMBER	DESCRIPTION	DATE	APPROVAL

LAW / KINGDON, P. A.
 ARCHITECTS & ENGINEERS
 WICHITA, KANSAS

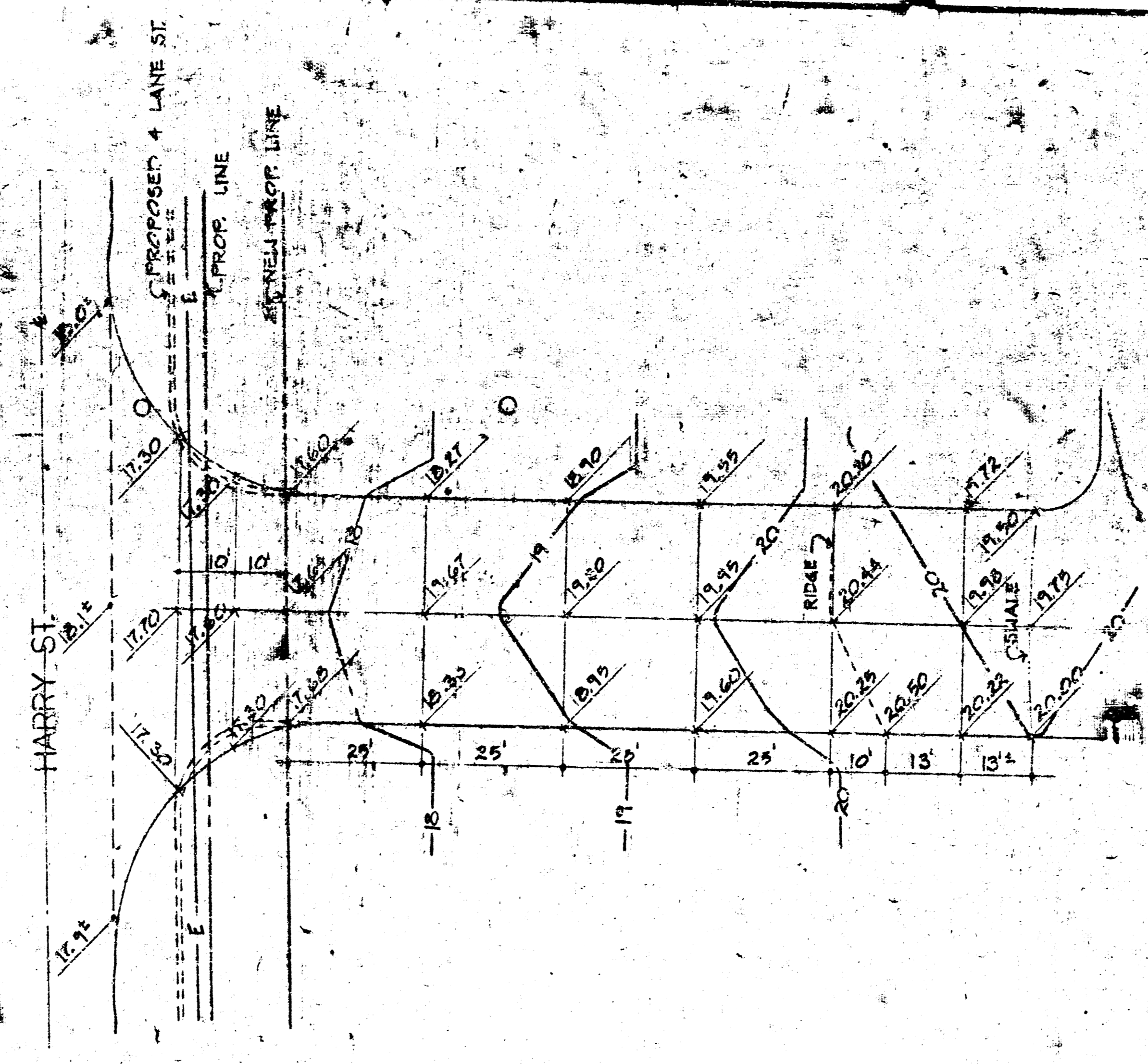
UNITED STATES POSTAL SERVICE
 REAL ESTATE & BUILDINGS DEPARTMENT
 WASHINGTON, D.C. 20260

UNITED STATES POSTAL FACILITY AND VEHICLE MAINTENANCE FACILITY WICHITA, KANSAS

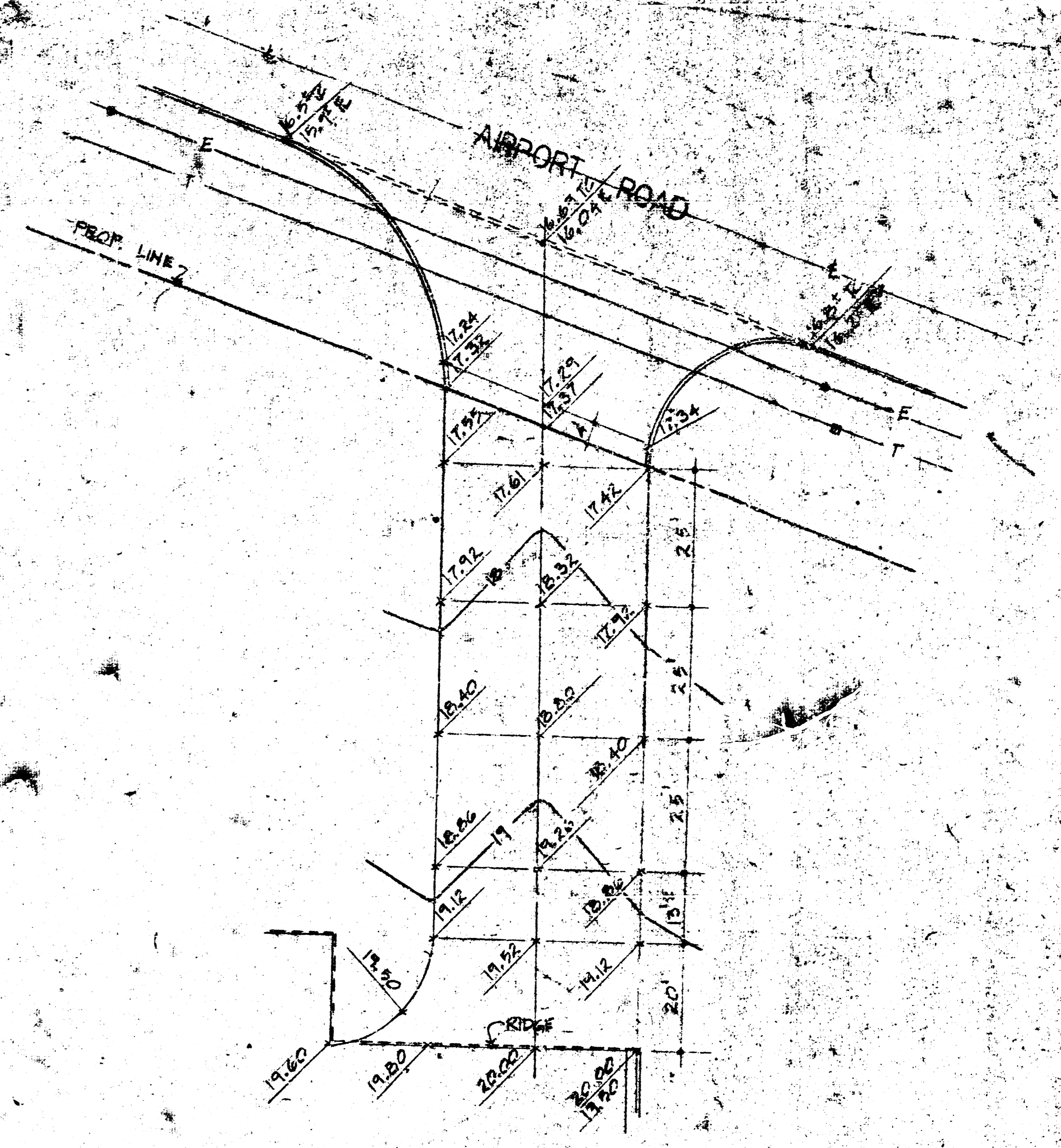
DESIGNED BY
 DRAWN BY



B ENLARGED CUSTOMER PARKING GRADING PLAN
1"=20'

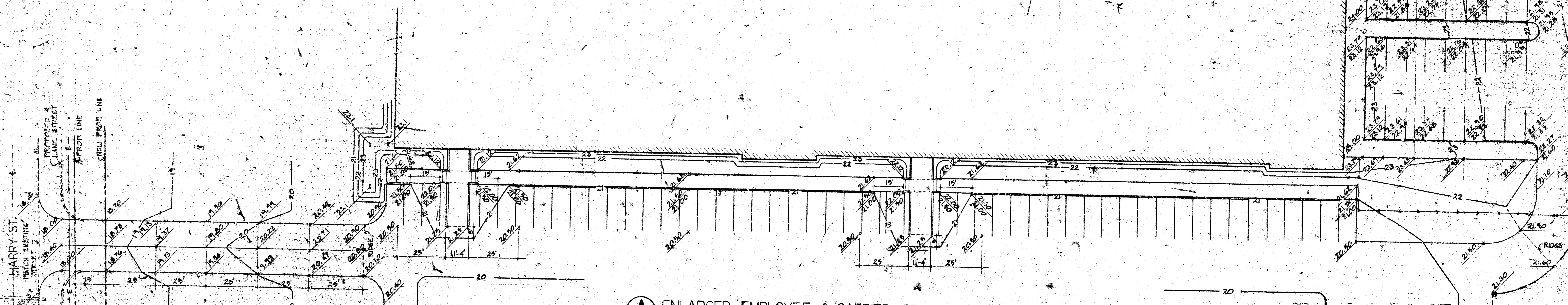


C ENLARGED SERVICE ENTRY TO HARRY ST.
1"=20'

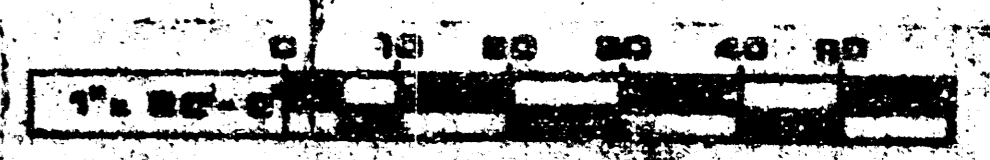


D ENLARGED SERVICE ENTRY TO AIRPORT ROAD
1"=20'

NORTH
(TYP ALL PLANS THIS SHEET)



A ENLARGED EMPLOYEE & CARRIER PARKING GRADING PLAN
1"=20'

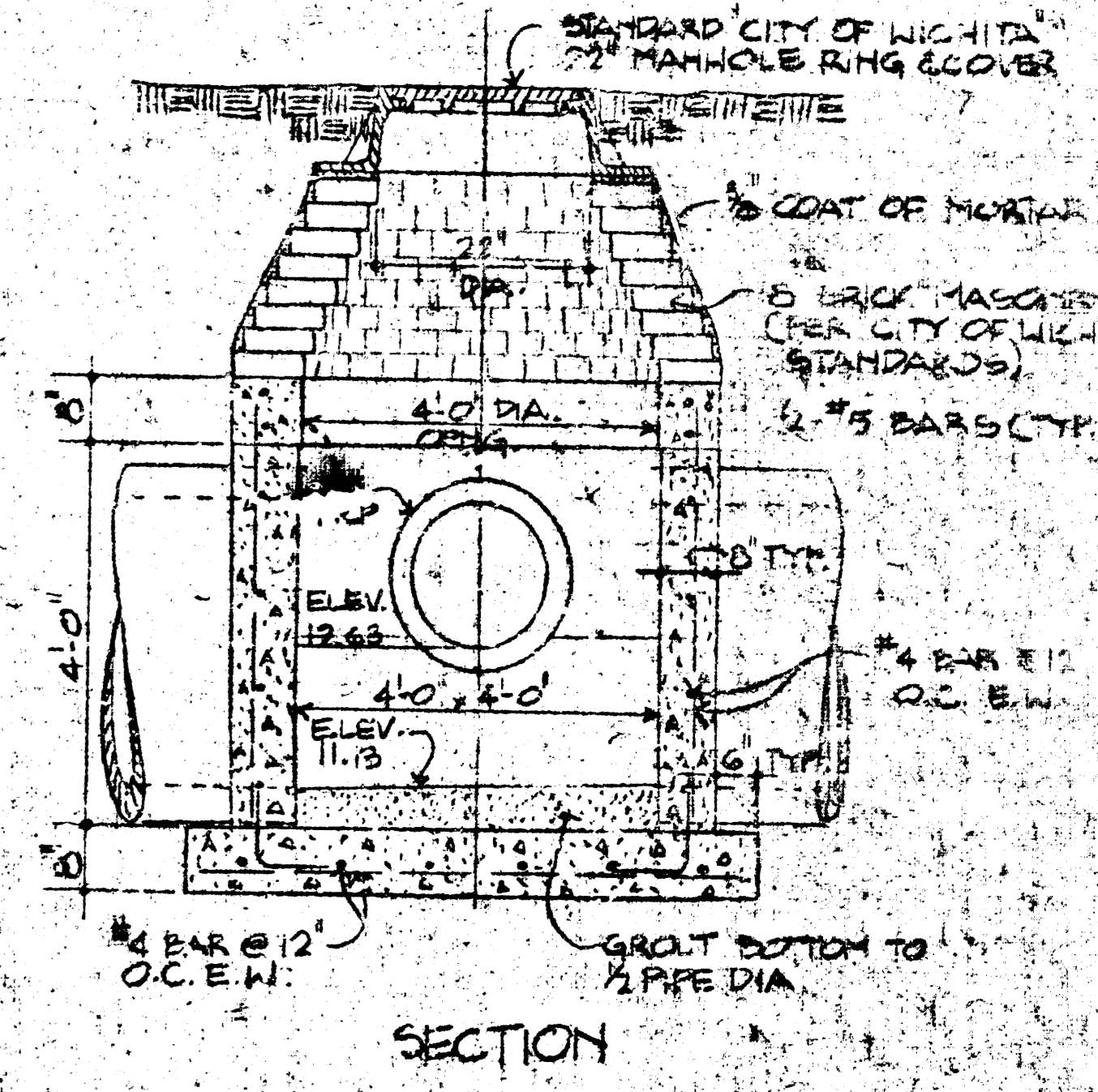
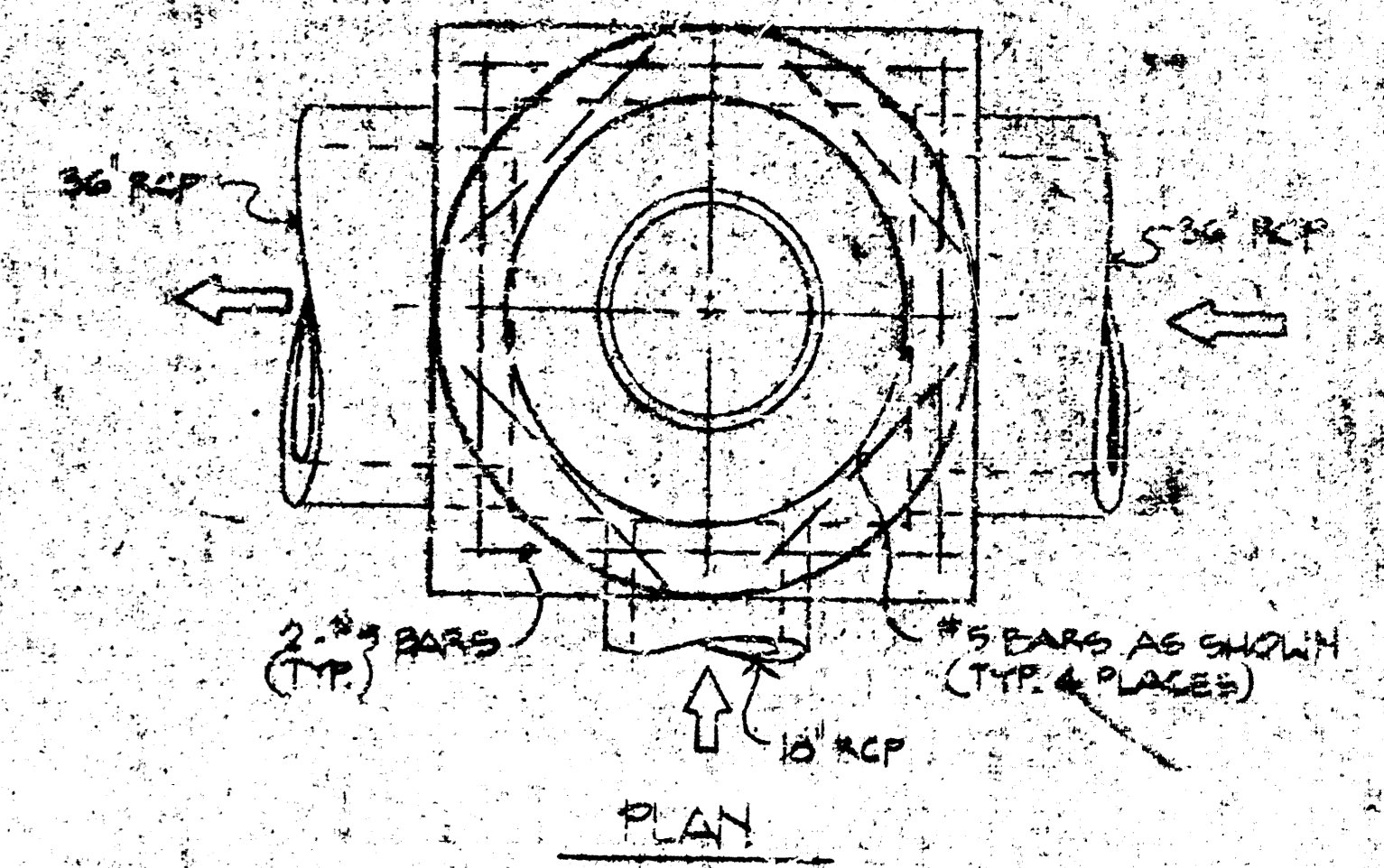
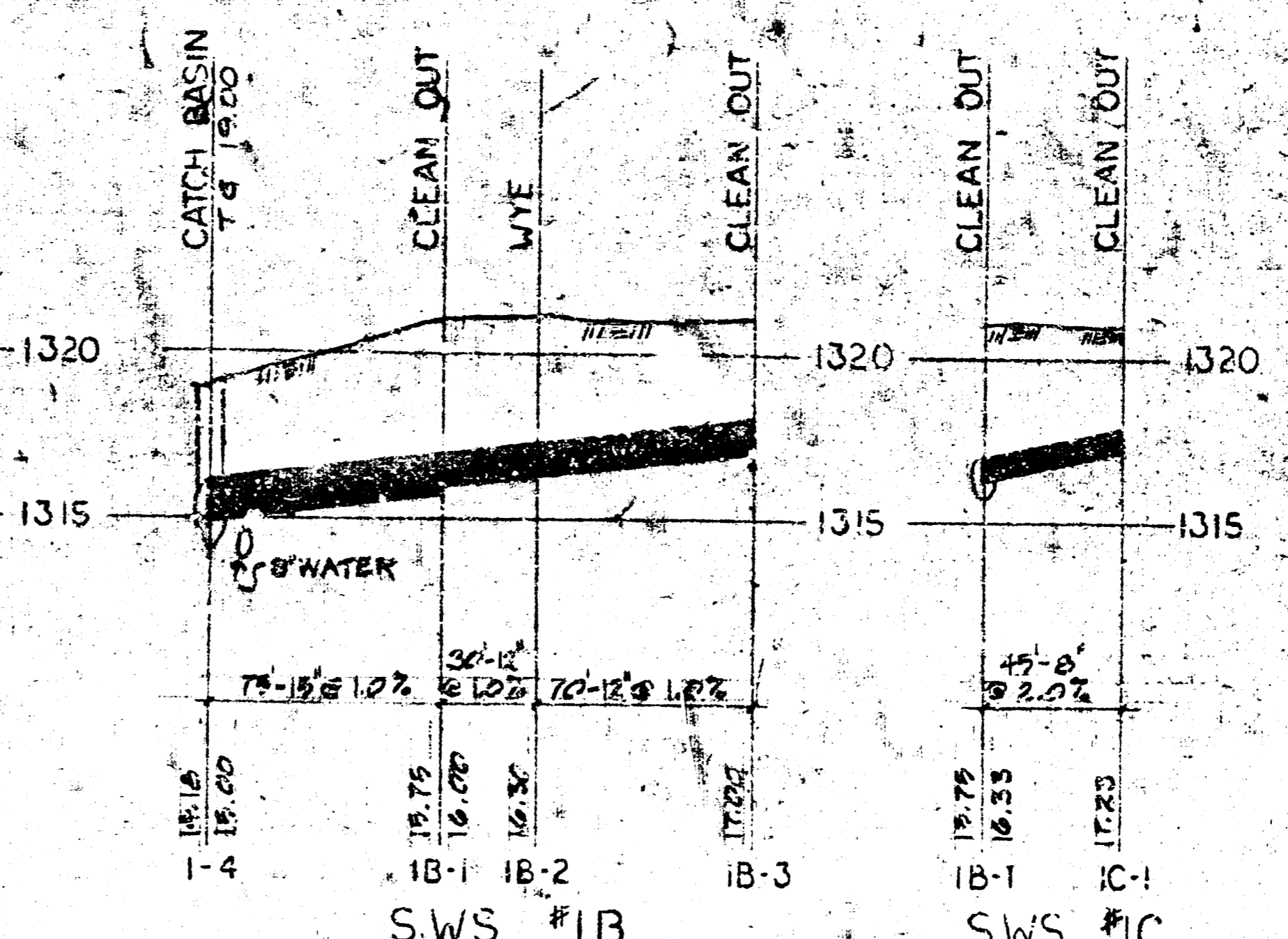
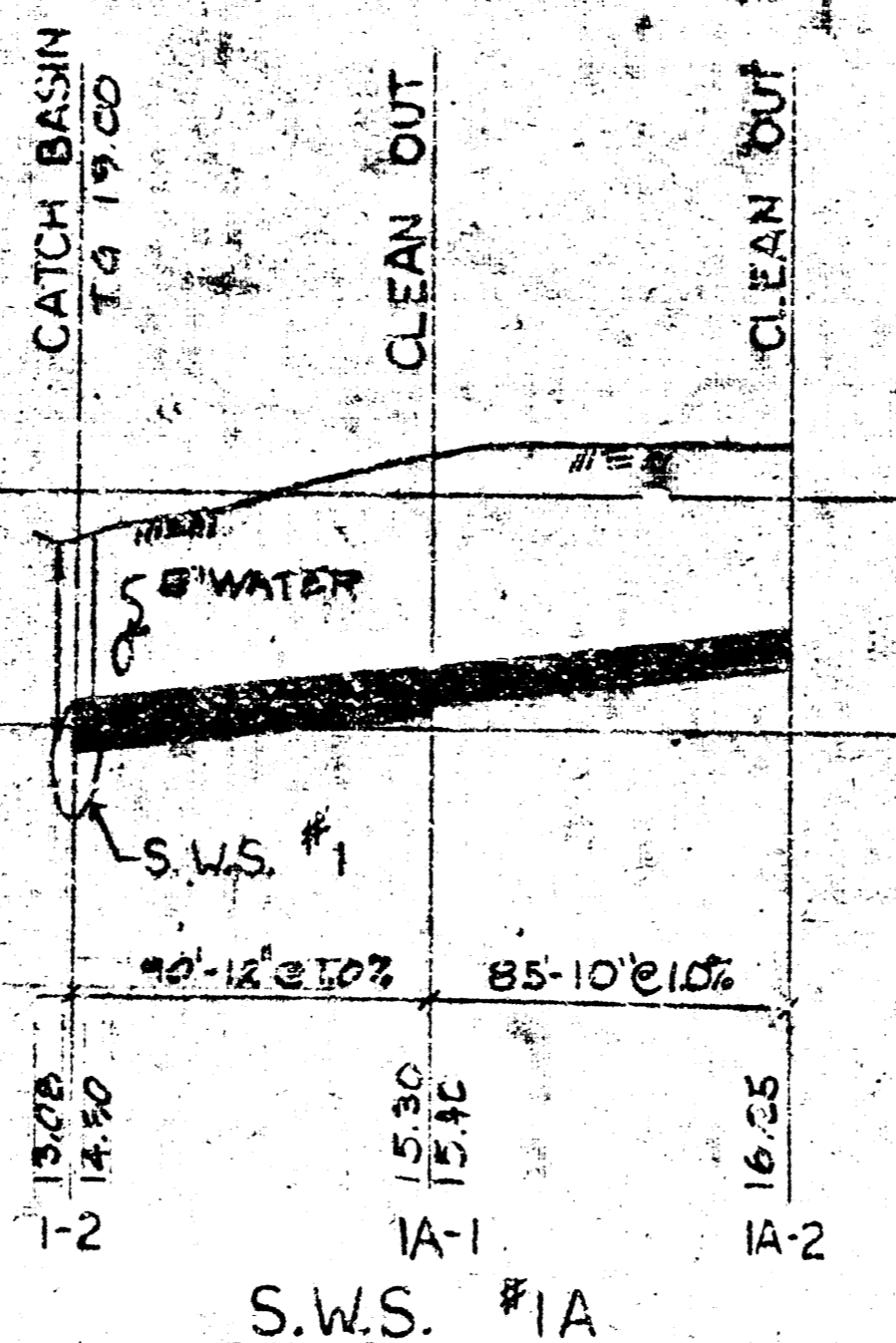
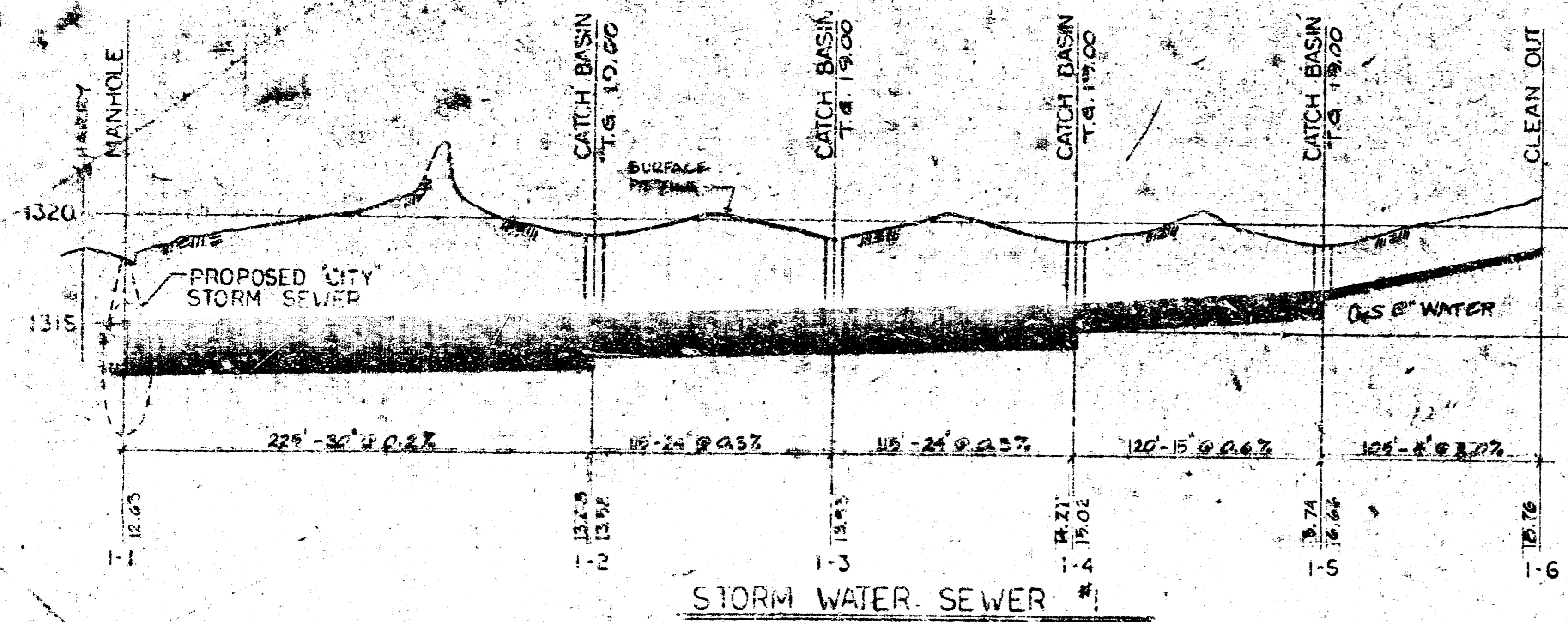


REVISIONS		
NUMBER	DESCRIPTION	DATE APPROVAL

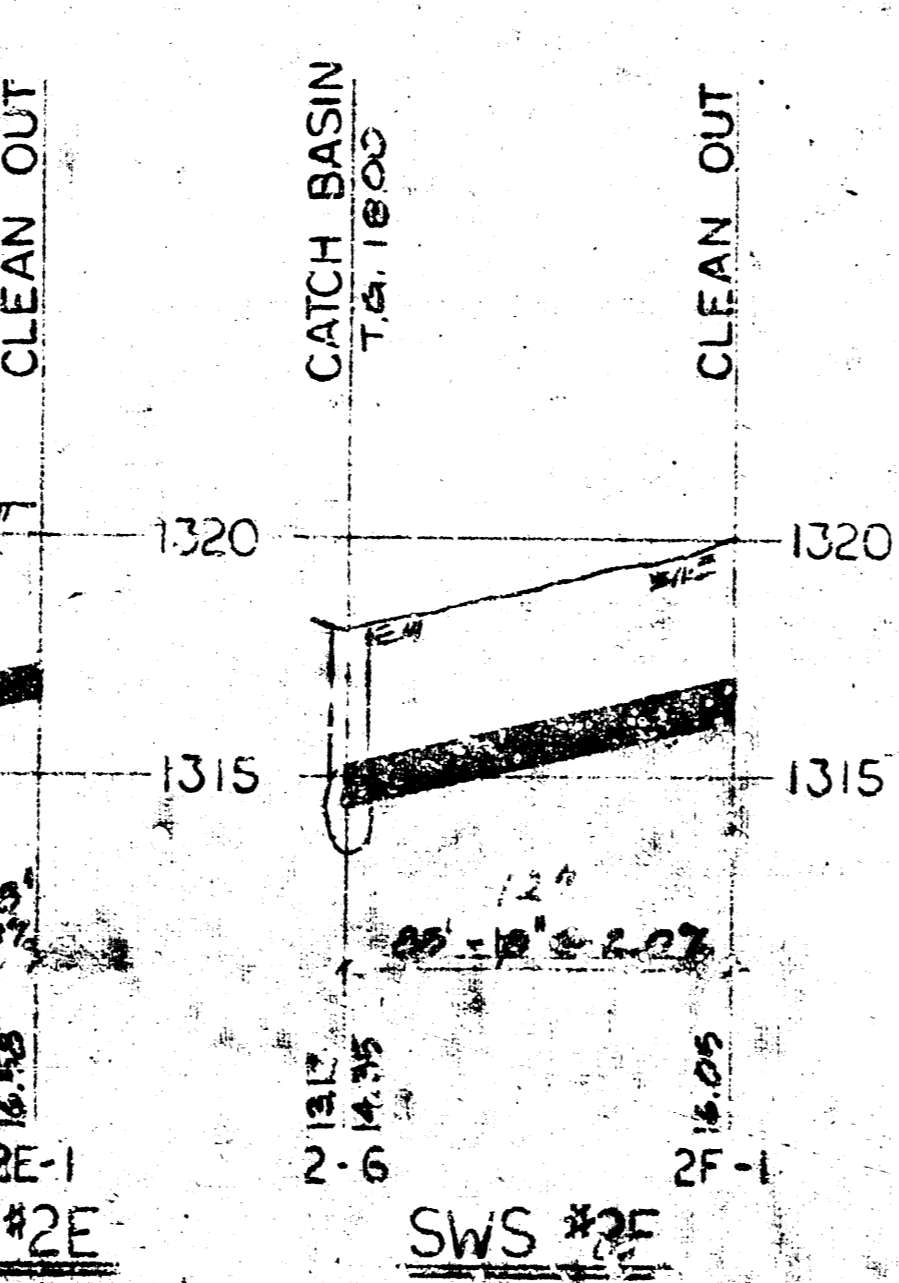
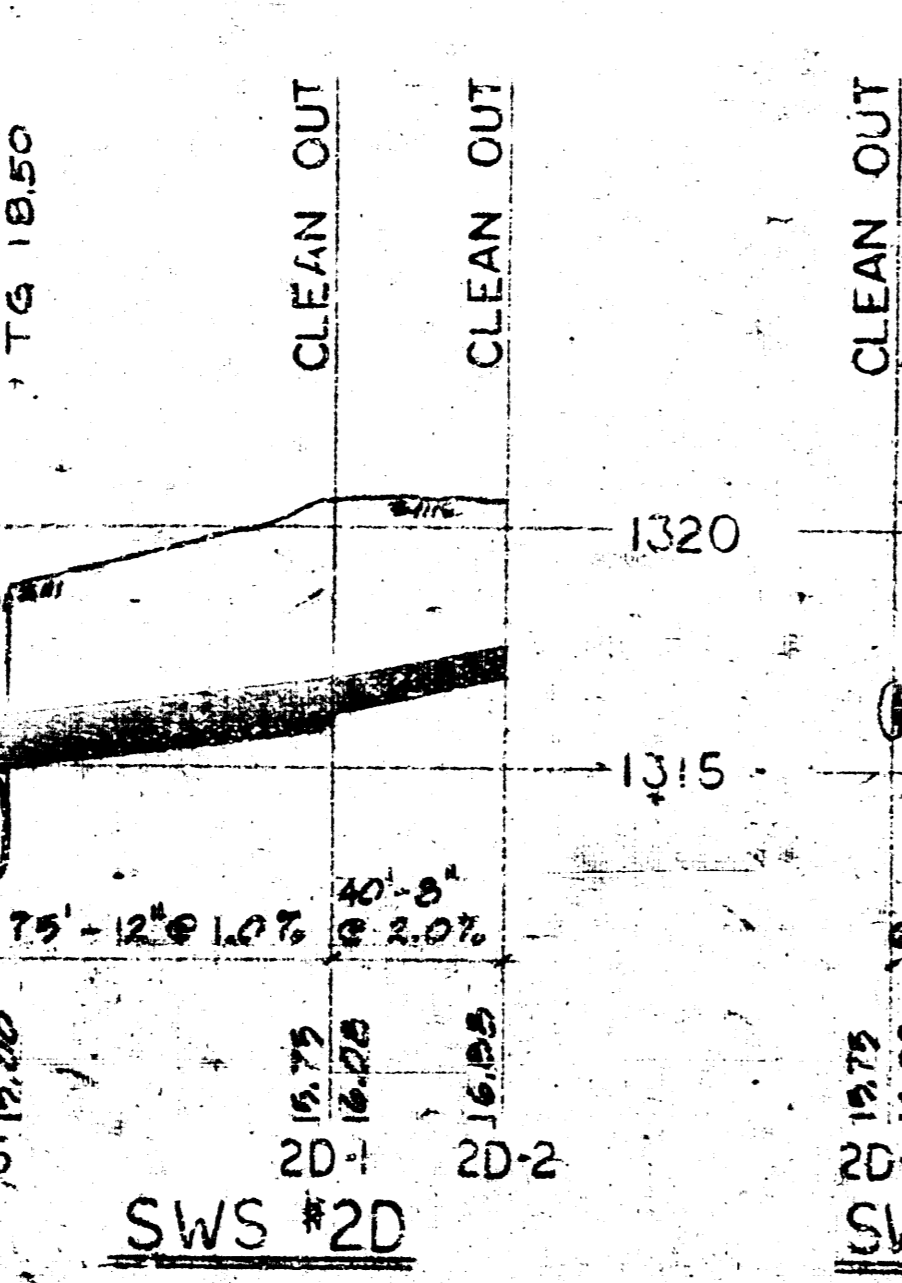
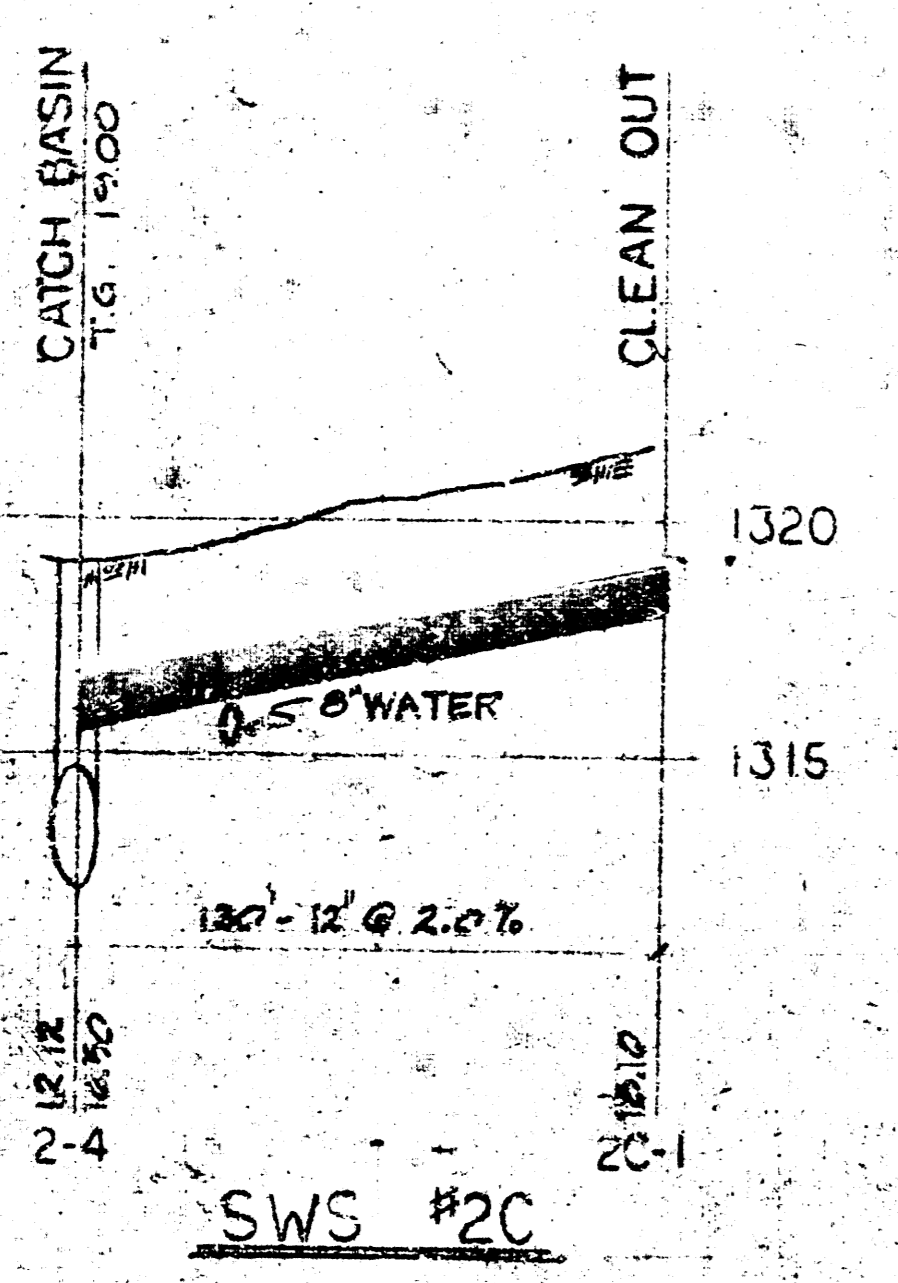
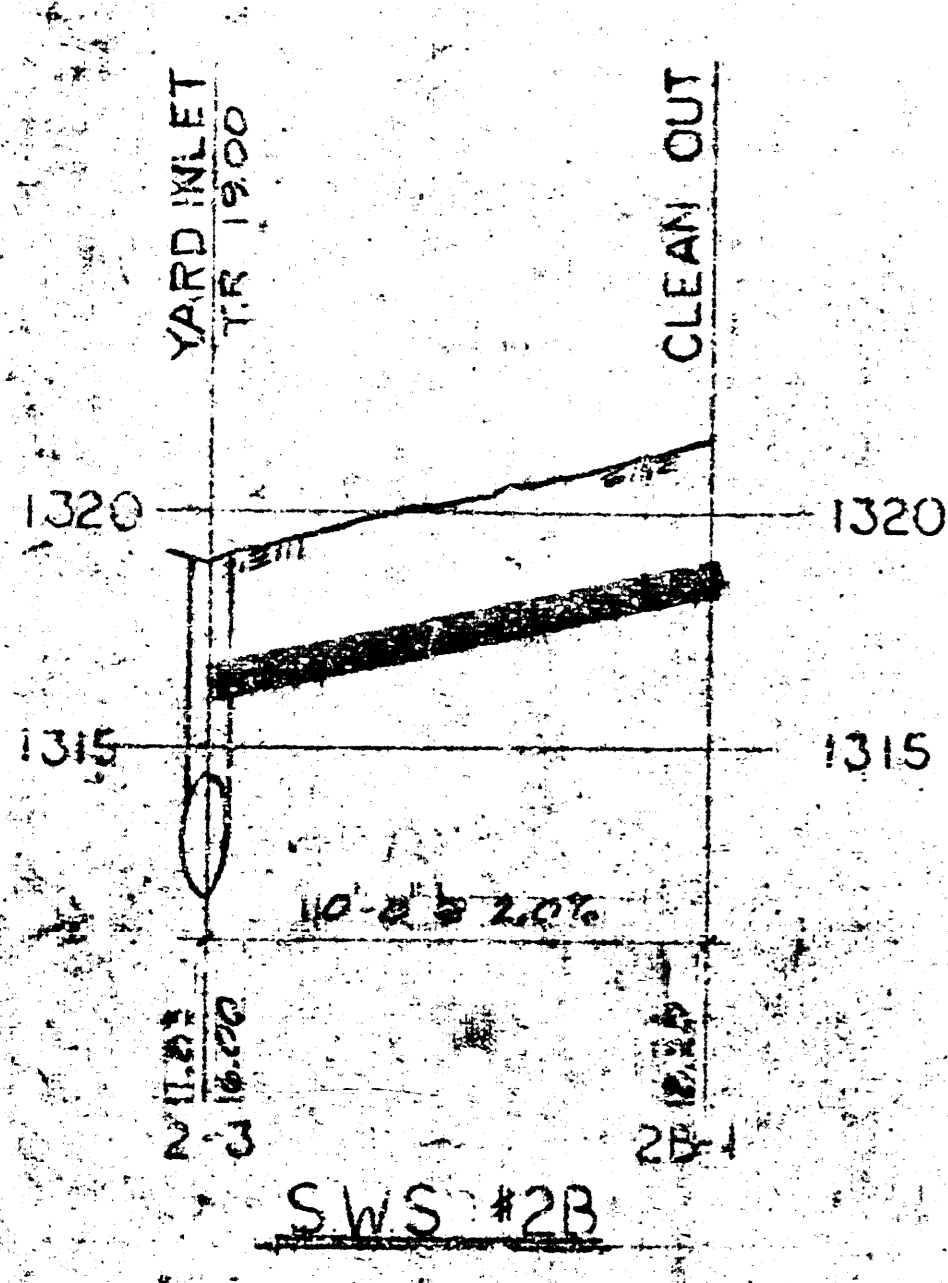
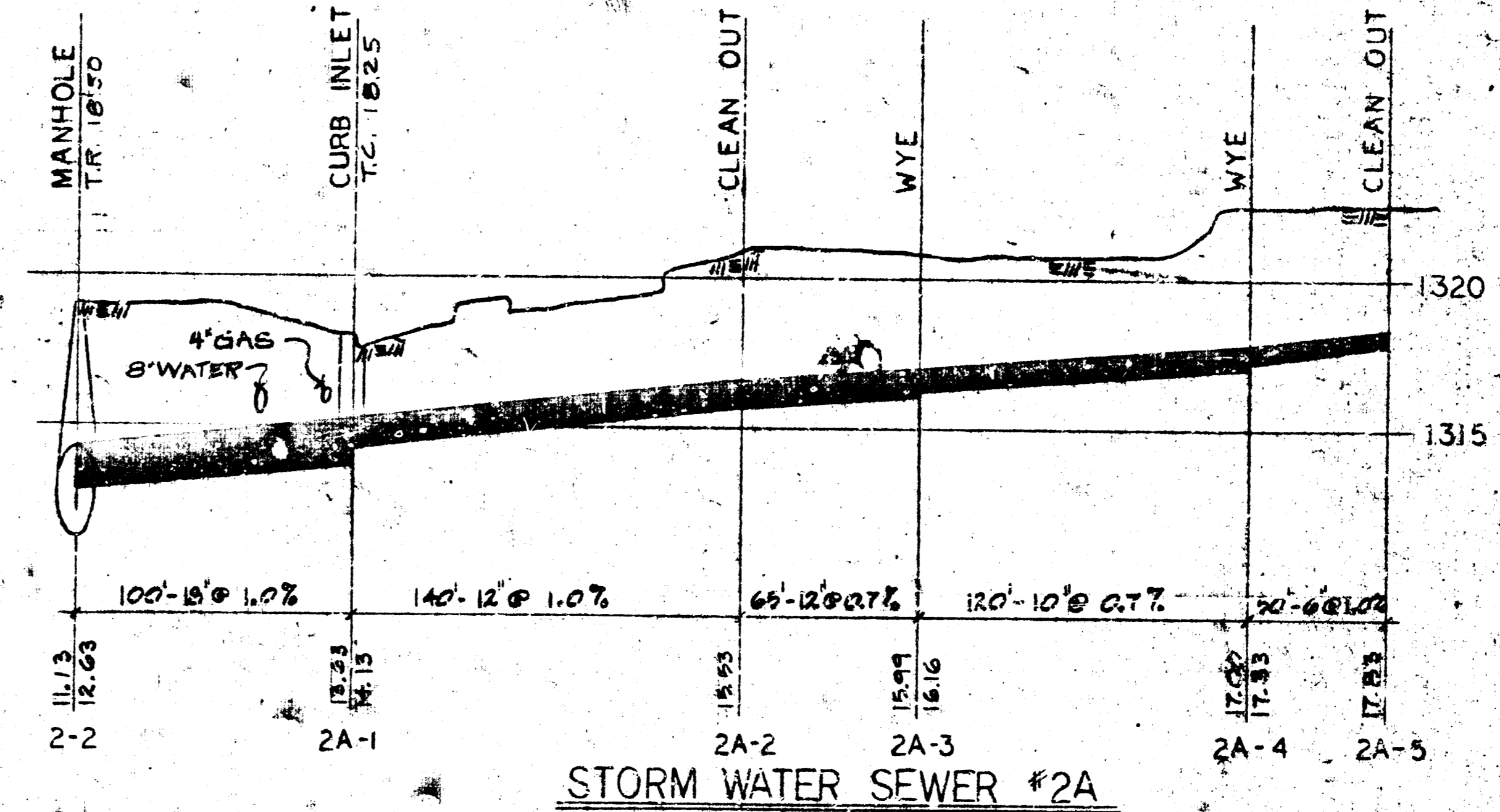
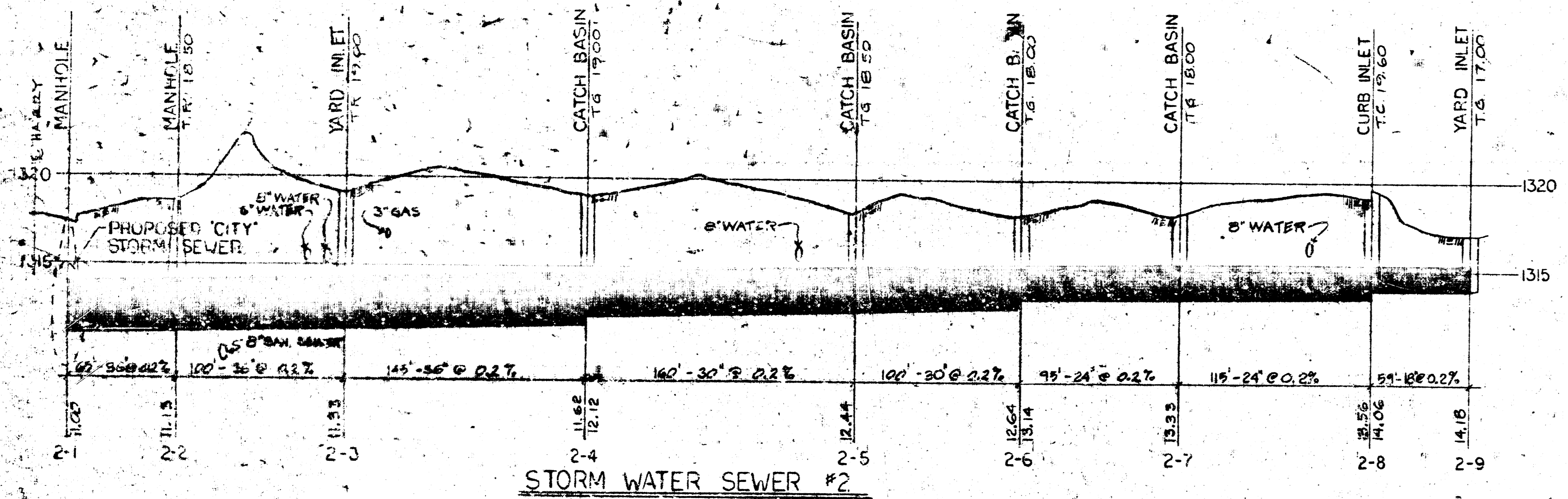
LAW / KRIGDON, P.A.
ARCHITECTS & ENGINEERS
WICHITA, KANSAS
DESIGNED BY
R.P.
DRAWN BY

UNITED STATES POSTAL SERVICE
REAL ESTATE & BUILDINGS DEPARTMENT
WASHINGTON, D.C. 20260

UNITED STATES POSTAL FACILITY
VEHICLE MAINTENANCE FACILITY



STORM SEWER MANHOLE



- GENERAL NOTES:
- ALL PIPE TO BE REINFORCED CONCRETE PIPE.
 - T.G. = TOP OF GRADE
T.C. = TOP OF CURB
T.R. = TOP OF R.I.M

REVISIONS			
NUMBER	DESCRIPTION	DATE	APPROVAL

LAW / KINGDON, P.A.
ARCHITECTS & ENGINEERS
WICHITA, KANSAS

UNITED STATES POSTAL SERVICE
REAL ESTATE & BUILDINGS DEPARTMENT
WASHINGTON, D.C. 20260

DESIGNED BY: P.P.
DRAWN BY: M.C.
CHECKED BY:

UNITED STATES POSTAL FACILITY AND
VEHICLE MAINTENANCE FACILITY
WICHITA, KANSAS