

PROFILE OF STORM SEWER - CITY OF WICHITA PRIVATE STORM SEWER NO. DBKW 707073 - SCALE: 1" = 30' HORIZONTAL & 1" = 10' VERTICAL

FABRICATION PLANT  
FIN. FL. 112.26

WAREHOUSE

OFFICES

ENGINEERING DEPARTMENT  
FIN. FL. 113.32

SYCAMORE ST.

SECTION 20

SEE "TABLE OF CONTENTS" AT FAR LEFT.

TABLE OF CONTENTS

1. SITE PLAN - GRADING PLAN - STORM SEWER PLAN
  2. DROP INLET DETAILS (CITY OF WICHITA, KS.)
  3. DETAILS OF SEWER APPURTENANCES (CITY OF WICHITA, KS.)
- NOTE: CONTRACTORS OPTION - CAST IN PLACE CONCRETE MANHOLES W/ DETAILS PER CITY OF WICHITA.

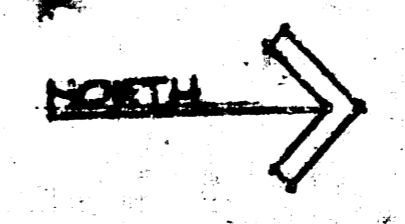
SITE PLAN  
1" = 30'

GRADING PLAN  
1" = 30'

ROADWAYS SURFACE OF 6" COMPACTED CRUSHED ROCK.  
PARKING AREAS - 3" COMPACTED CRUSHED ROCK.  
PARKING N.E. OF SHOWER BLDG NOT INCLUDED.

STORM SEWER PLAN  
1" = 30'

(SEE PROFILE AT TOP OF SHEET)  
CITY OF WICHITA  
PRIVATE STORM SEWER  
NO. DBKW 707073

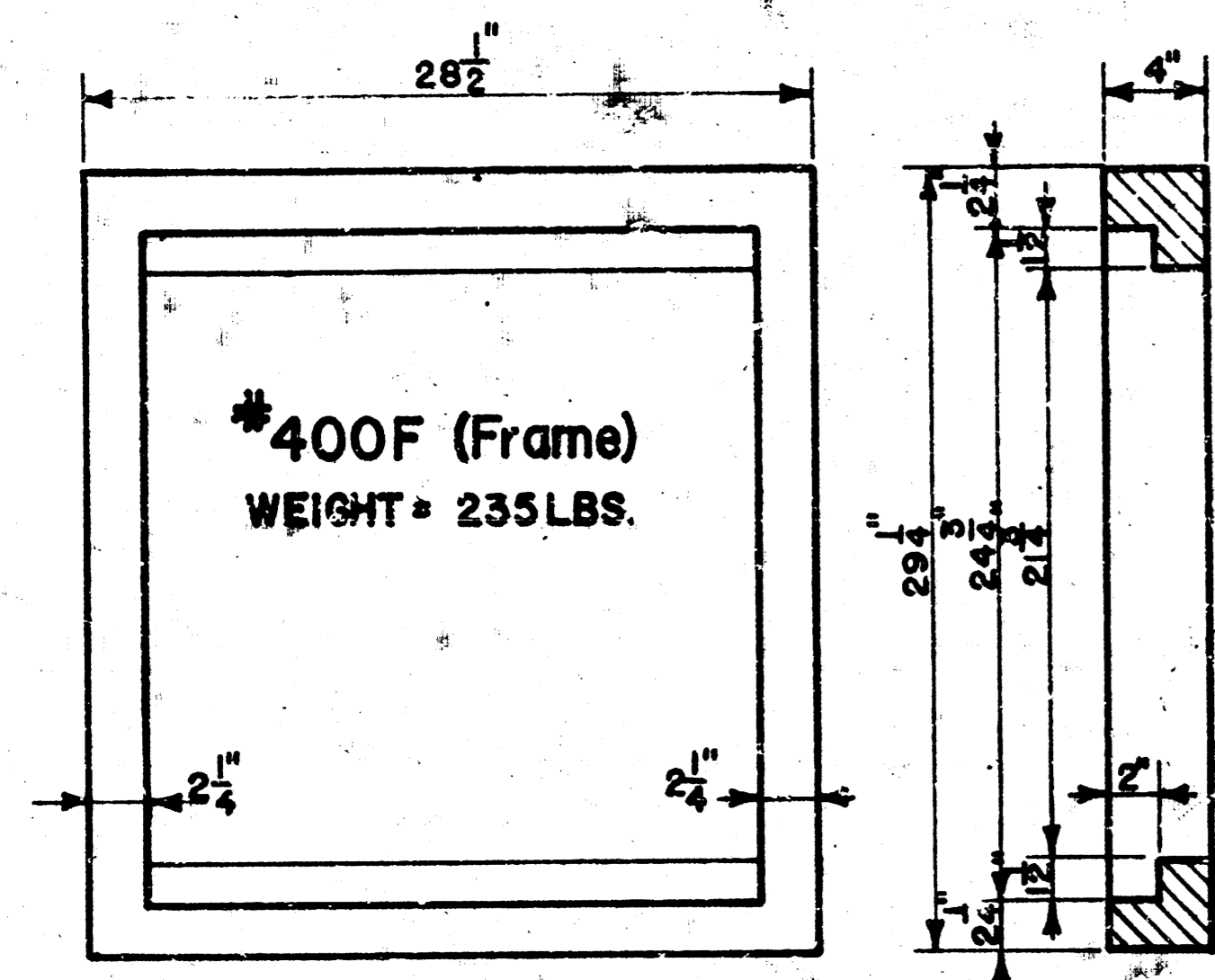


albertson architects - planners  
 WATKINS, INC.  
 WICHITA, KANSAS

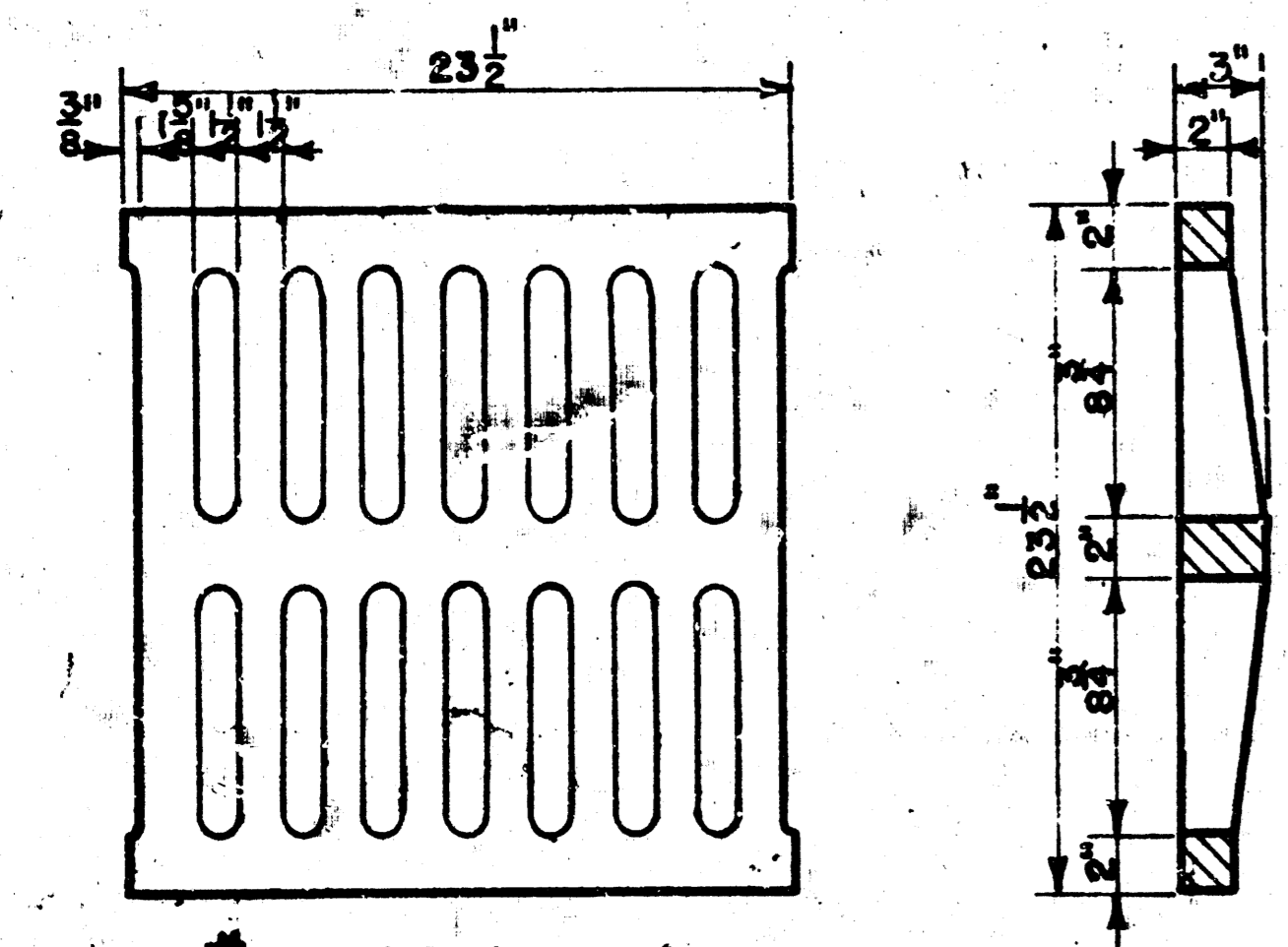
Job No. 1624D  
Date 15 AUG 71  
Drawn  
Checked

SITE IMPROVEMENTS FOR  
 WATKINS, INC.  
 SECOND AND SYCAMORE STREETS - WICHITA, KANSAS

NOTE: Grates shall be imprinted on the top surface with "CITY OF WICHITA" using letters at least 1" in height. Other marking methods may be used only if approved by the engineer.

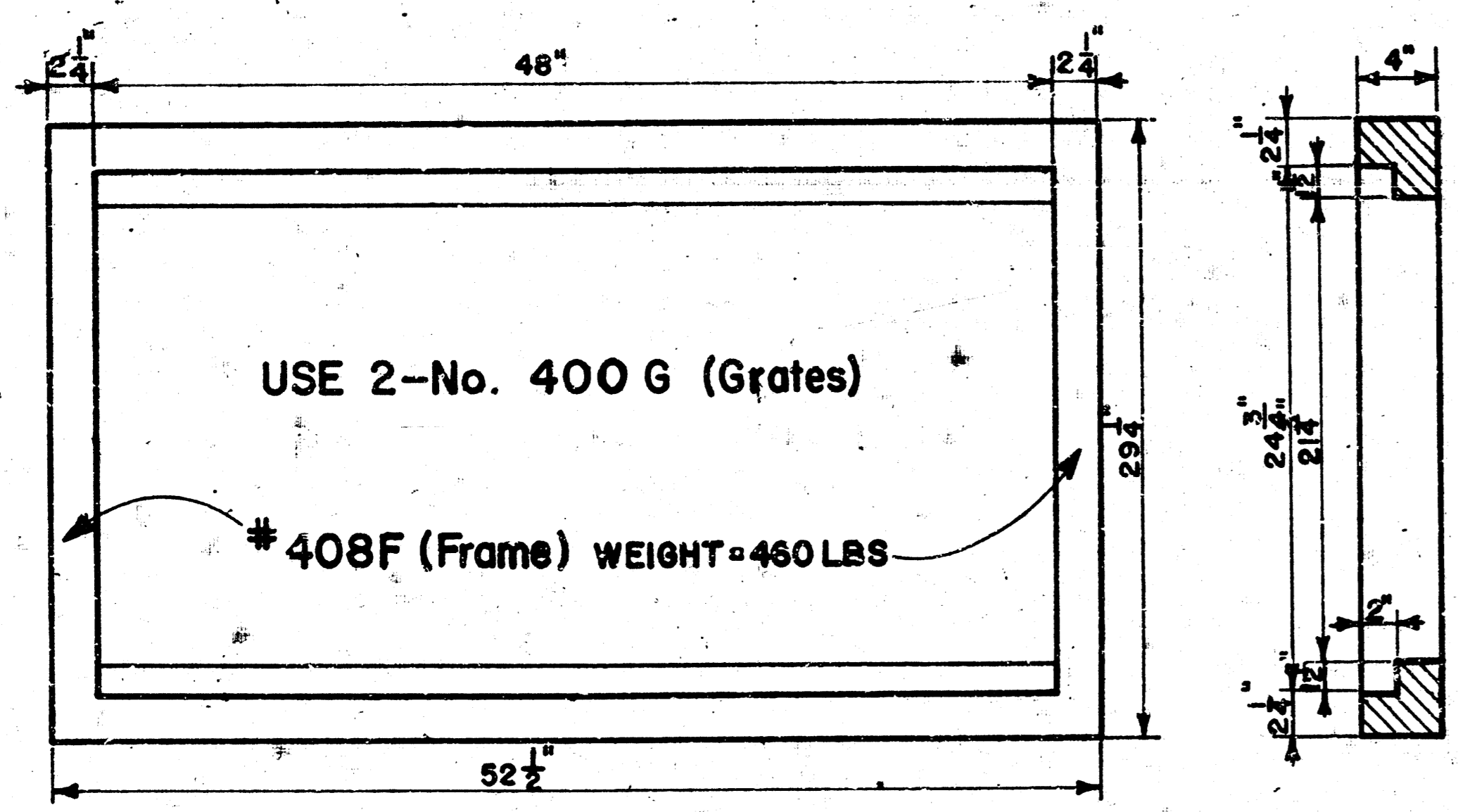


#400F (Frame)  
WEIGHT = 235 LBS.



#400G (Grate)  
WEIGHT = 236 LBS.

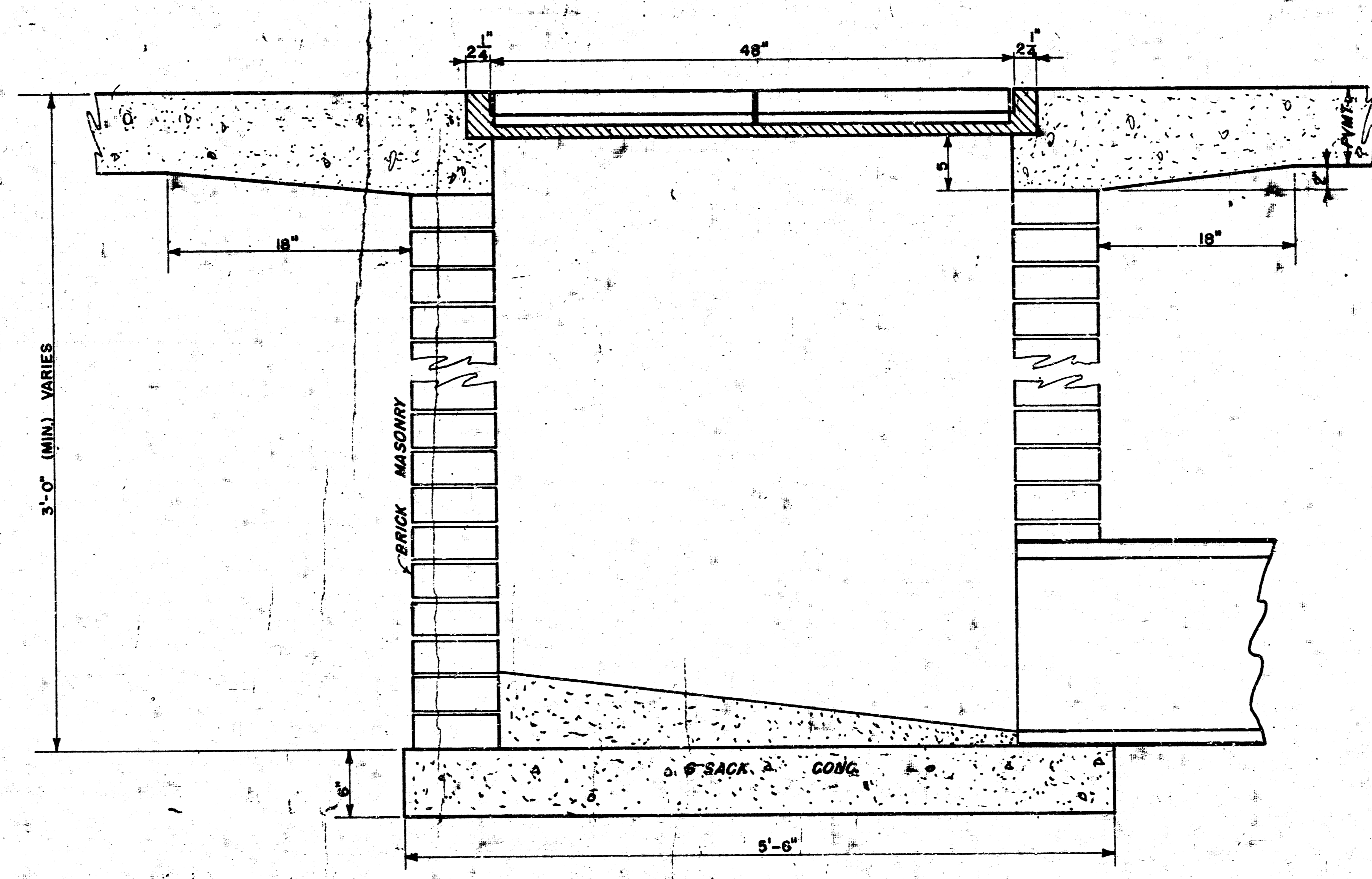
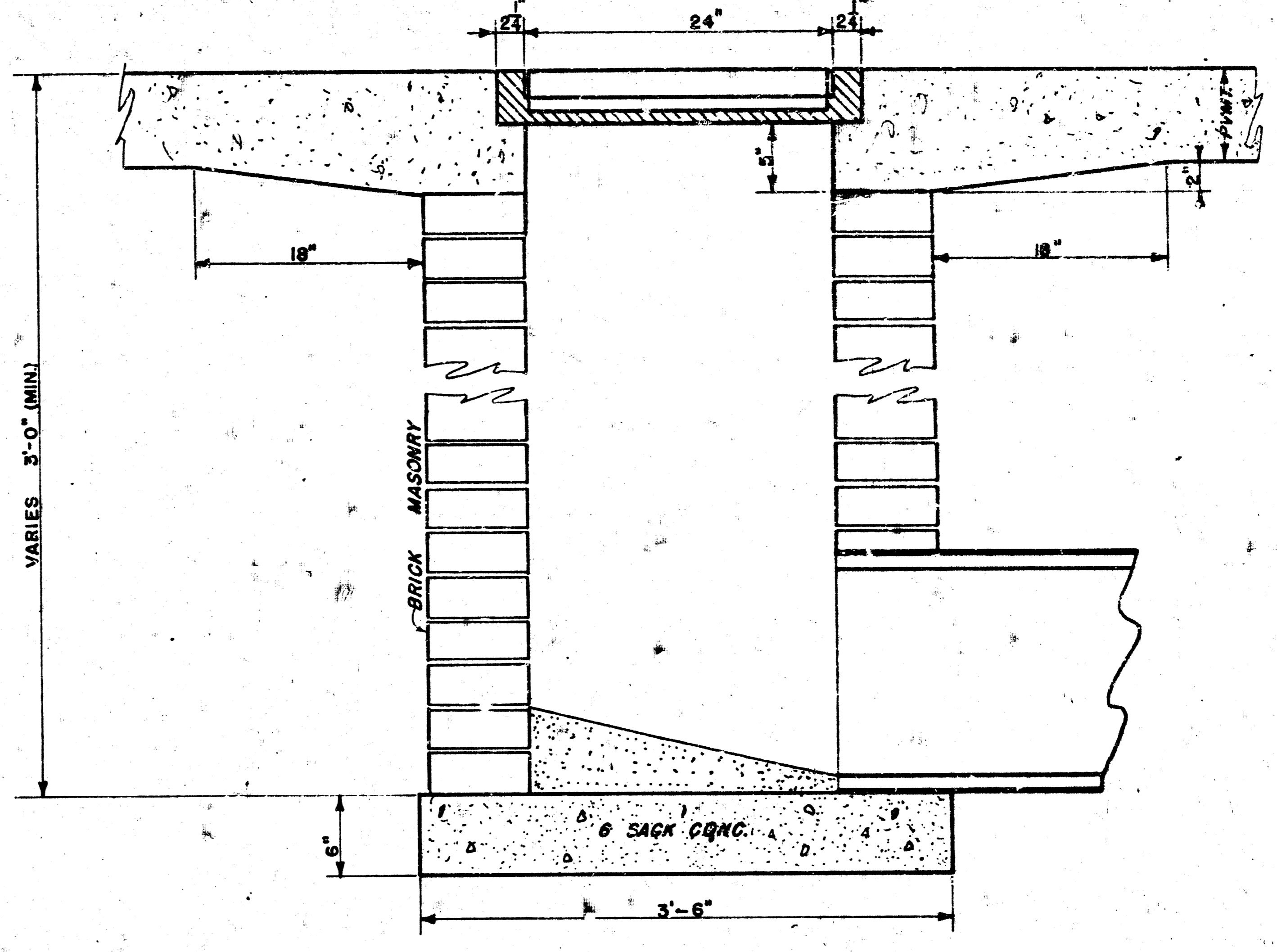
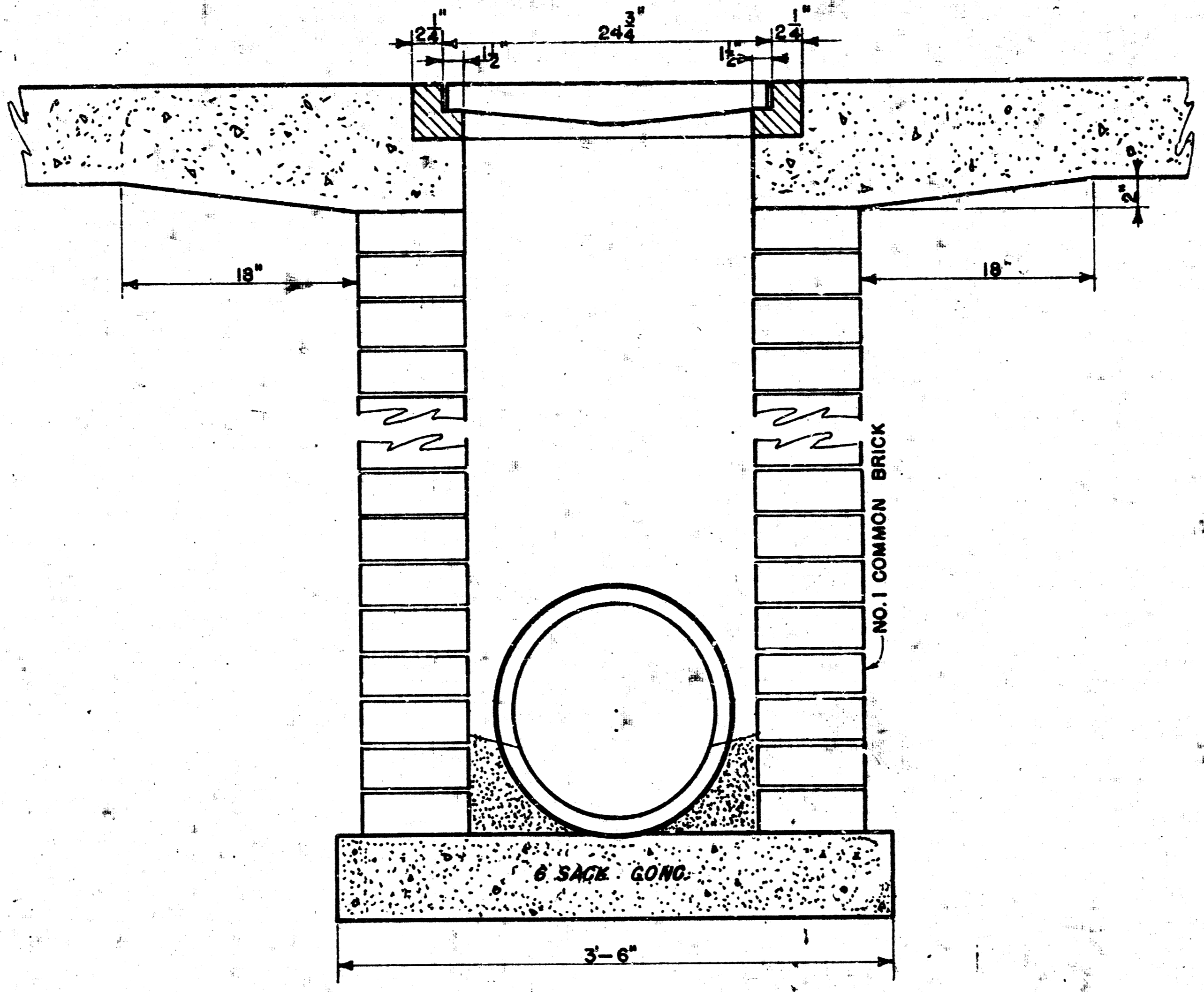
24"x24" Frame & Grate Detail



USE 2-No. 400 G (Grates)

#408F (Frame) WEIGHT = 460 LBS

Double 24"x24" Frame Detail



PRIVATE STORM SEWER NO. 28 KW TOTOTS  
SITE IMPROVEMENTS FOR  
7684P  
**WATKINS, INC.**  
SECOND & SYCAMORE STREETS - WICHITA, KANSAS

**DROP INLET DETAILS**

R.W. Linn City Engineer  
City of Wichita, Kansas  
Project  
Project No.  
Date:  
Scale: 1-1/2" = 1'-0"

W.I.N.