

# **NORTH WICHITA INDUSTRIAL PARK STORM DRAINAGE IMPROVEMENTS**

FOR THE CITY OF:

## **WICHITA, KANSAS**

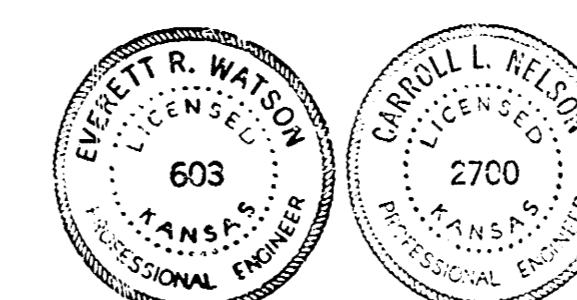
PART I & PART III CONSTRUCTION

INDEX TO DRAWINGS

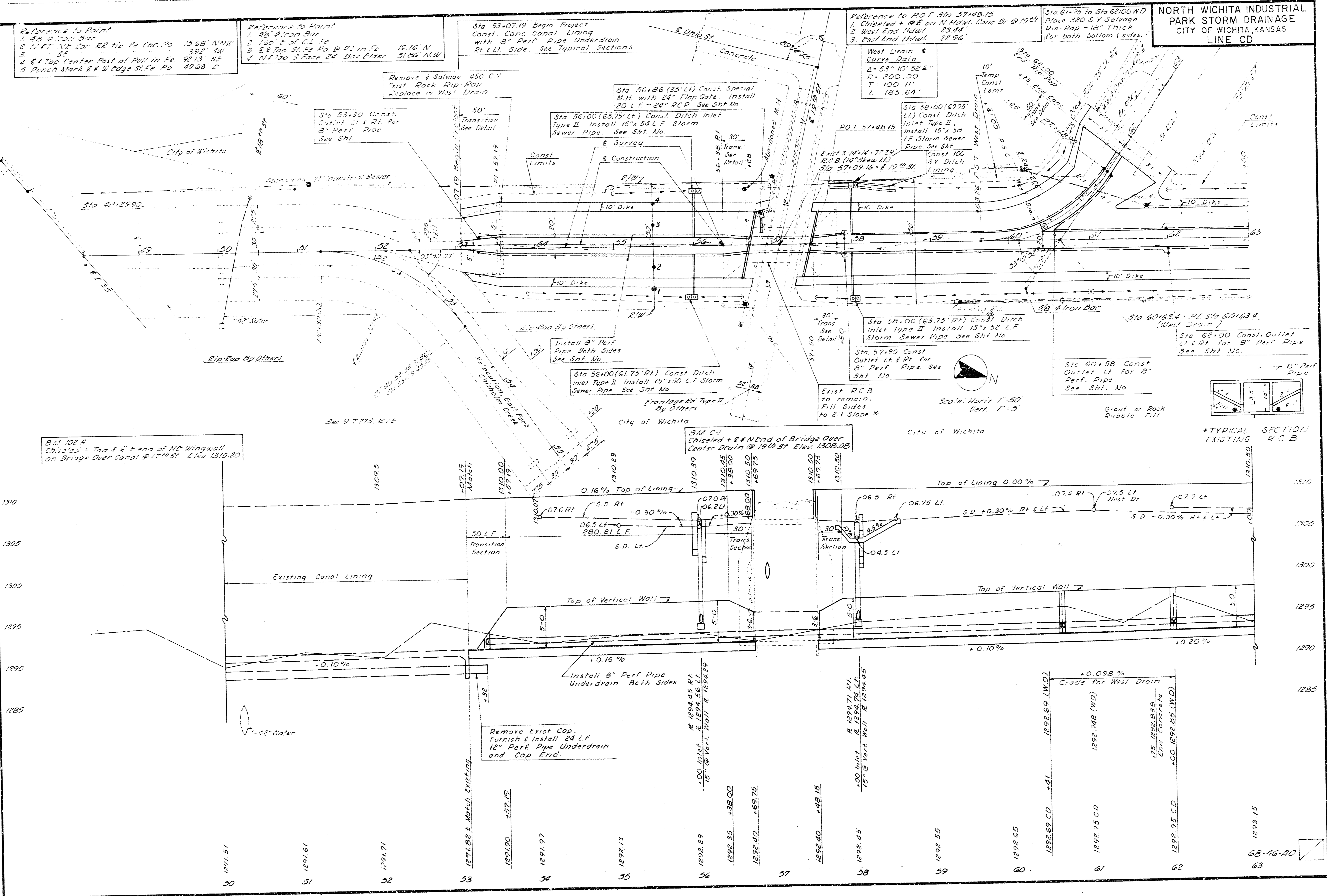


Van Doren • Hazard • Stallings • Schnacke  
Engineers • Architects  
Topeka, Kansas

Job no. 068 • 46 • A0



**NORTH WICHITA INDUSTRIAL PARK STORM DRAINAGE**  
CITY OF WICHITA, KANSAS  
LINE CD



Reference to Point  
1. 98' from SWP  
2. N of N 1/2 Sec 22 E of E 1/2 Cor. Po 15.68 N.W.K.  
3. N of N 1/2 Sec 22 E of E 1/2 Cor. Po 19.9' SW  
4. E of Top Center Post of Pull in Fd 92.13' SE  
5. Punch Mark E of W Edge of Fd Po 49.68' S

Reference to Point  
1. 28' from SWP  
2. 105' S of C.L. Fd  
3. E of Top of Fd @ 21.11' in Fd 19.16' N  
4. N of Top of Face of 84' Pipe 51.86' N.W.

Sta 53.0719 Begin Project  
Const. Conc. Conal Lining  
with 8\" Perfor Pipe Underdrain  
Rt. & Lt. Side. See Typical Sections

Reference to P.O.T. Sta 57.48.15  
1. Chiseled + @ E on N. H. of Conc. B- @ 1924  
2. West End Haul 23.44  
3. East End Haul 22.96

Sta 61.75 to Sta 62.00 W.D.  
Place 320 S.Y. Salvage  
Dip. Rod - 1/2\" Thick  
for both bottom & sides.

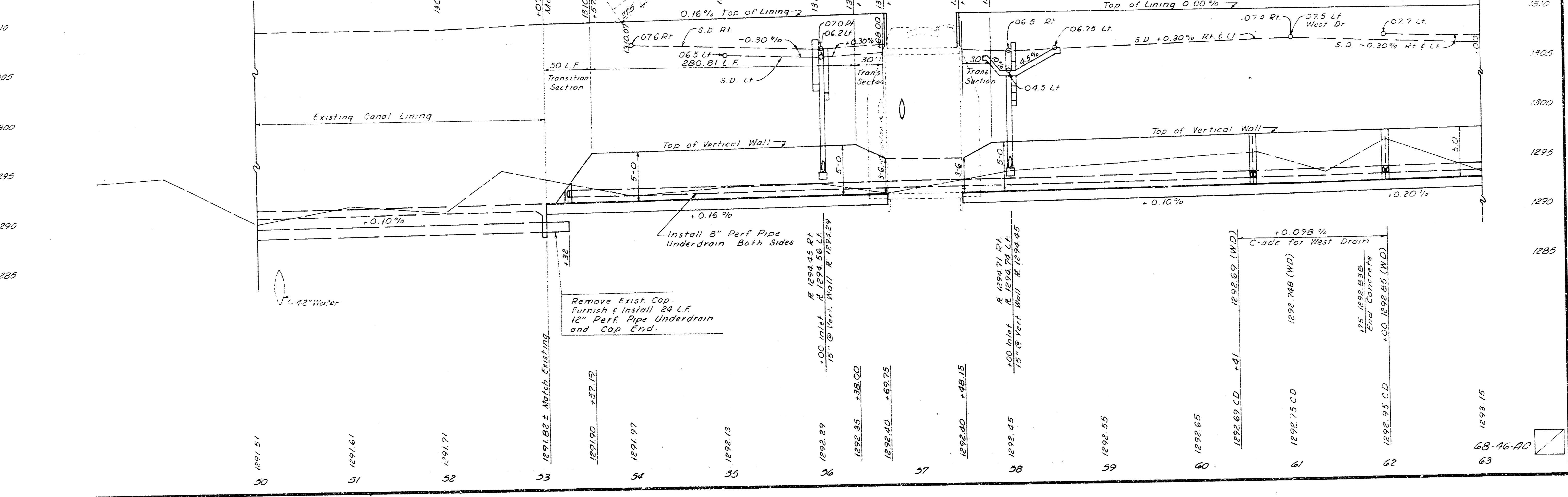
B.M. 102.4  
Chiseled + Top & E End of NE Wingwall  
on Bridge Over Canal @ 17th St. Elev. 1310.20

3.4 C.Y.  
Chiseled + E End of Bridge Over  
Center Drain @ 19th St. Elev. 1308.08

Exist. R.C.B.  
to remain.  
Fill Sides  
to 2:1 Slope \*

Sta 60.58 Const.  
Outlet Lt. for 8\"  
Perfor. Pipe  
See Sht. No.

\*TYPICAL SECTION  
EXISTING  
R.C.B.



68-46-A0





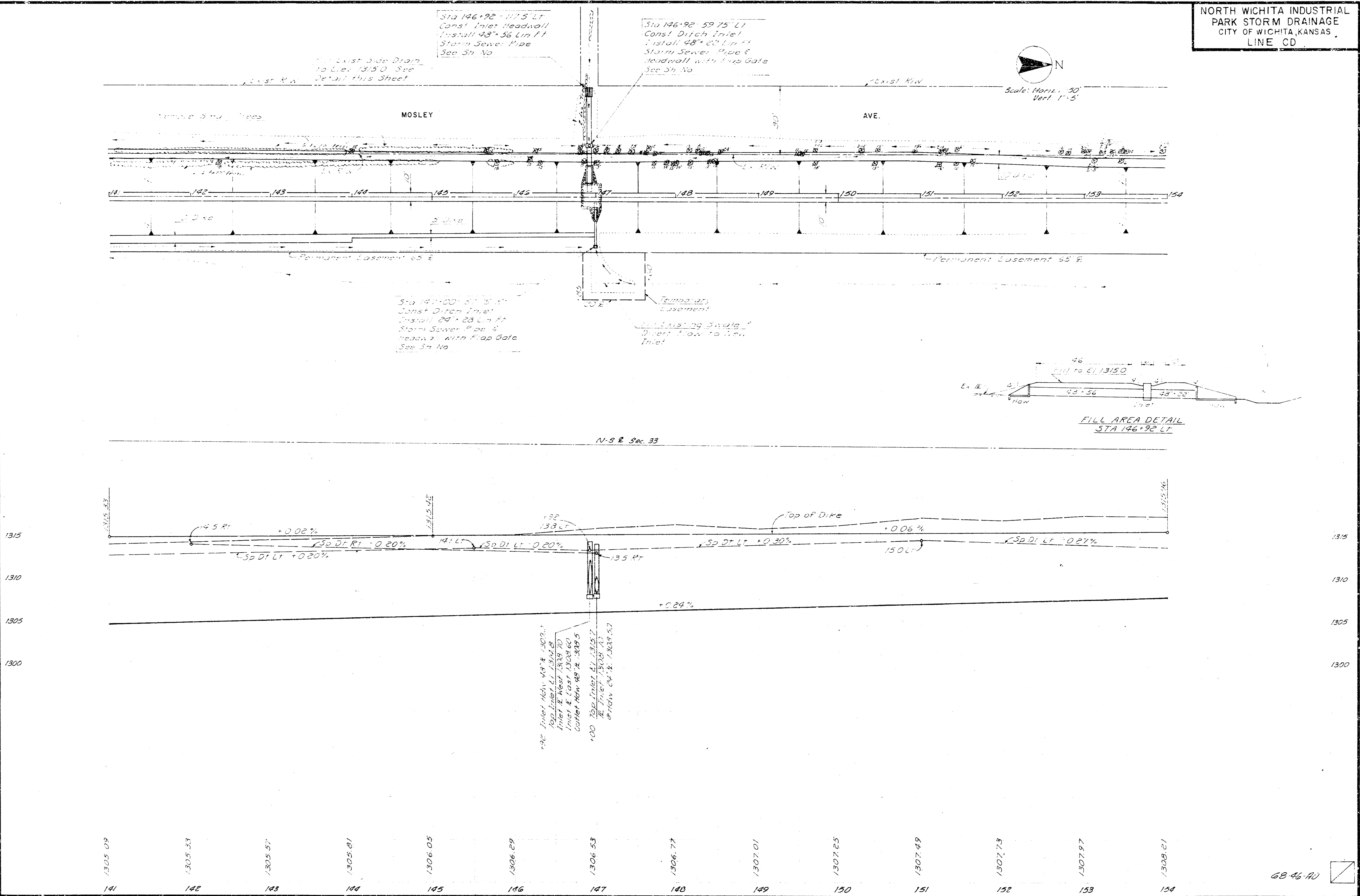




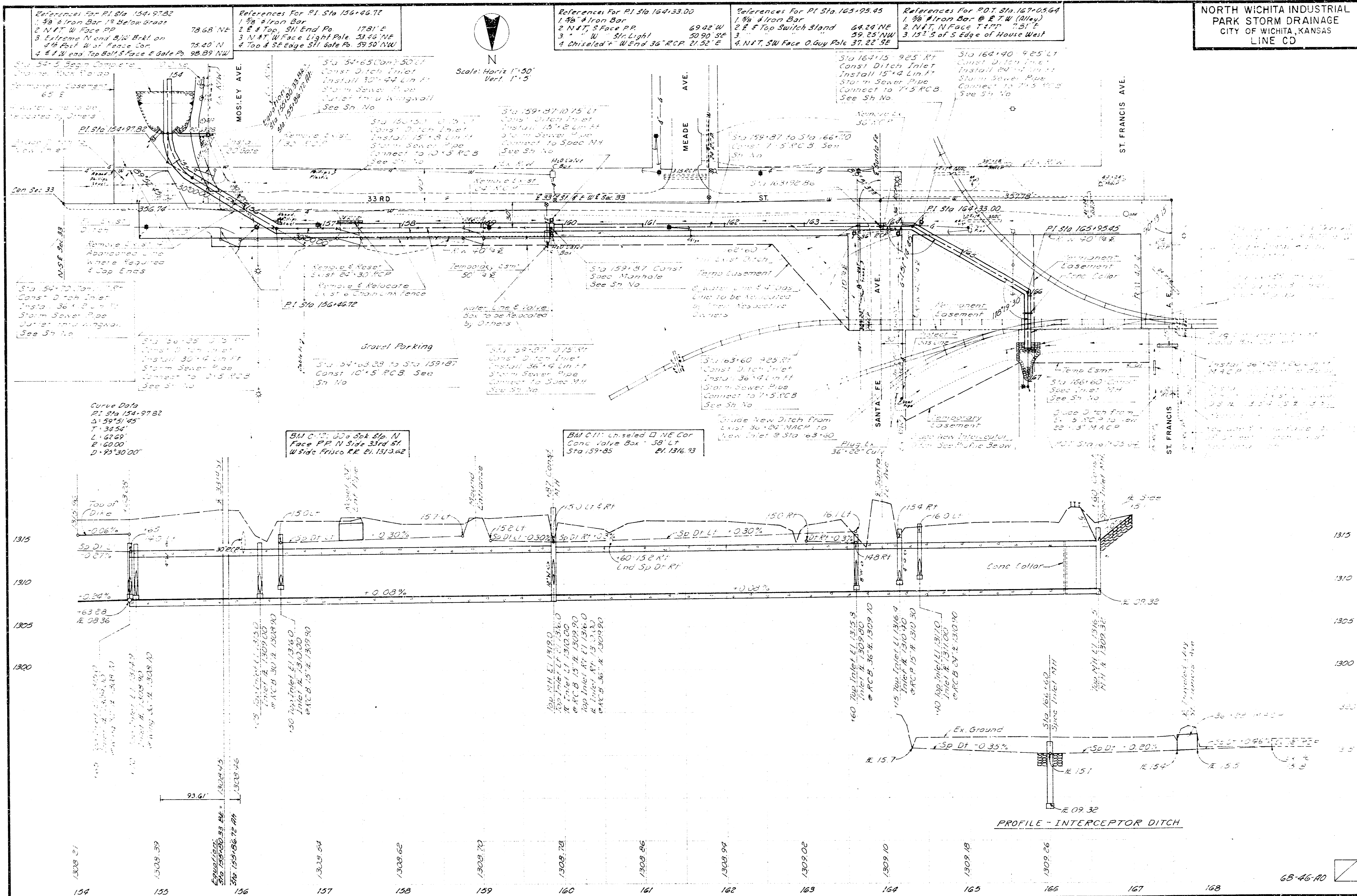




NORTH WICHITA INDUSTRIAL  
 PARK STORM DRAINAGE  
 CITY OF WICHITA, KANSAS  
 LINE CD



**NORTH WICHITA INDUSTRIAL  
PARK STORM DRAINAGE  
CITY OF WICHITA, KANSAS  
LINE CD**



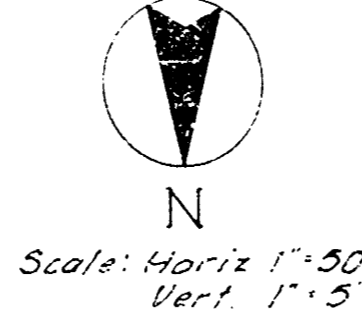
References for PI Sta 154.9782  
 1. 3/4" Iron Bar 15' below grade  
 2. N 47° W Face 89  
 3. Extreme N end NW Bldg on 3/4" Post W of Fence Cor  
 4. E 1/4 W end Top of 1st Face of Gate Pk 98.89 NW

References for PI Sta 156.4672  
 1. 3/4" Iron Bar  
 2. N 47° W Face 89  
 3. N 47° W Face Light Pole 53.46 NE  
 4. Top of 1st Face of Gate Pk 99.50 NW

References for PI Sta 164.3300  
 1. 3/4" Iron Bar  
 2. N 47° W Face 89  
 3. 3" W 5/8" Light  
 4. Chiseled "W" end 36" RCP 21.52' E

References for PI Sta 165.9545  
 1. 3/4" Iron Bar  
 2. E 8° Top Switch Stand 64.24 NE  
 3. 3" W 5/8" Light 59.23 NW  
 4. N 47° SW Face of Guy Pole 37.23 SE

References for P.O.T. Sta. 167.0564  
 1. 3/4" Iron Bar @ E 7° W (Ally)  
 2. N 47° W Face T 47° 7.81' E  
 3. 1/2" S of S Edge of House West



Curve Data  
 PI Sta 154.9782  
 Δ 59° 51' 45"  
 T 32.54'  
 L 167.69'  
 E 60.00'  
 D 92° 30' 00"

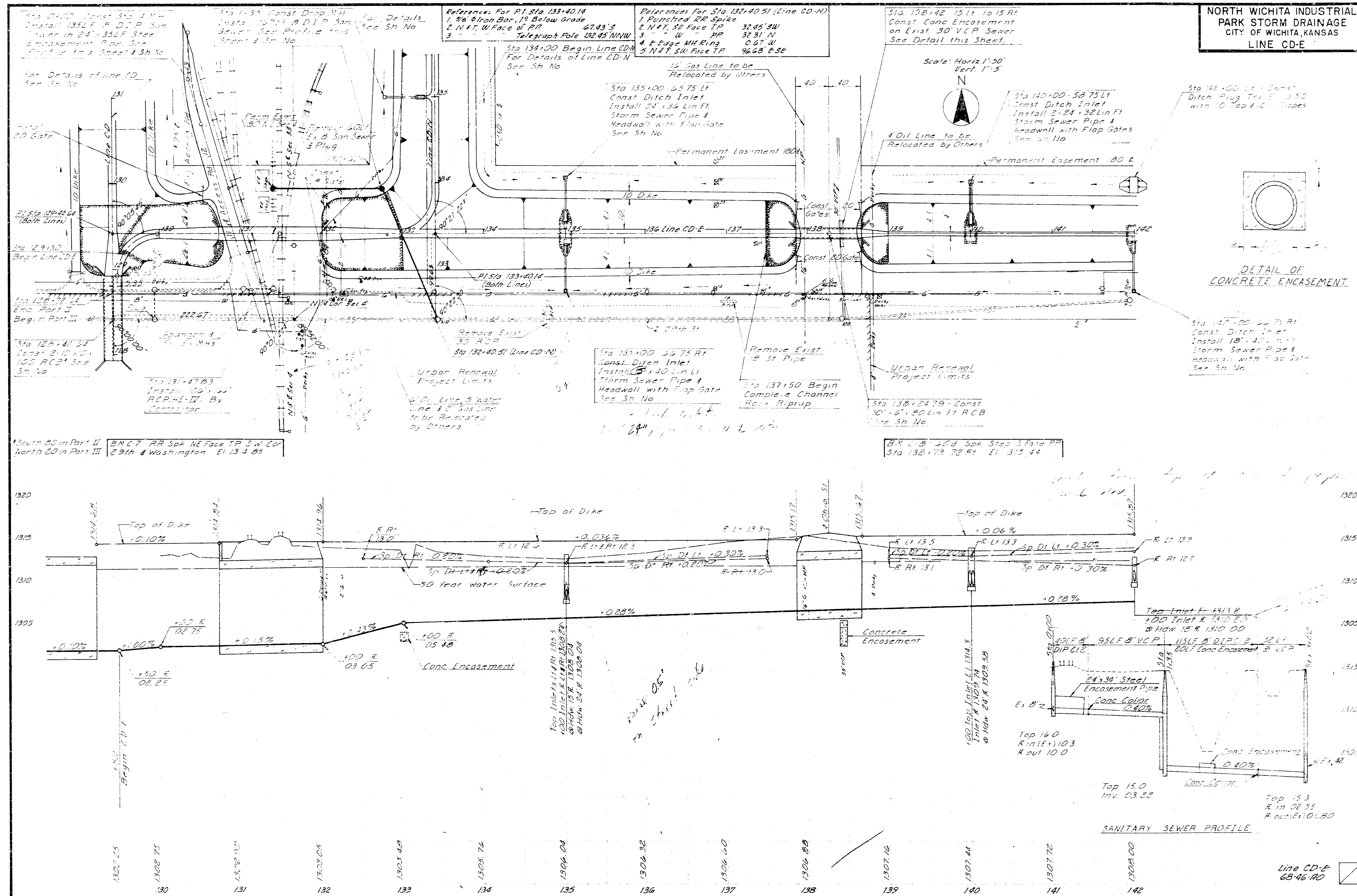
BM C 111 Unsealed @ NE Cor  
 Conc. Valve Box - 38" Lt  
 Sta 159.85 E 1316.93

BM C 111 Unsealed @ NE Cor  
 Conc. Valve Box - 38" Lt  
 Sta 159.85 E 1316.93

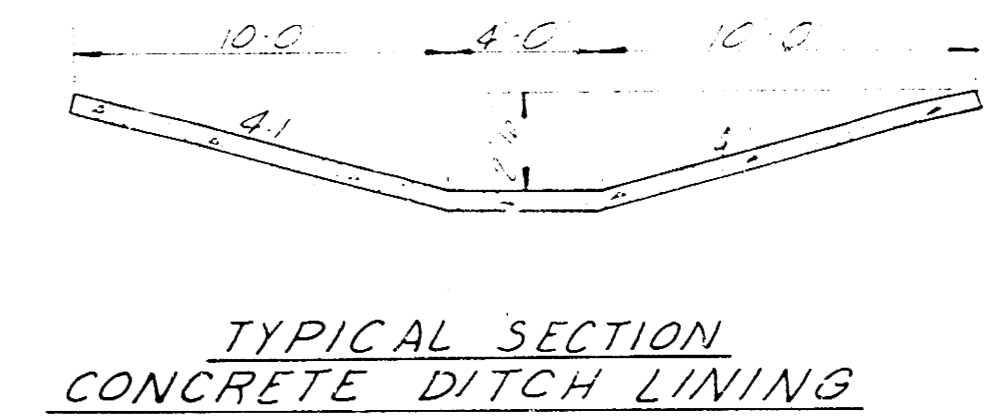
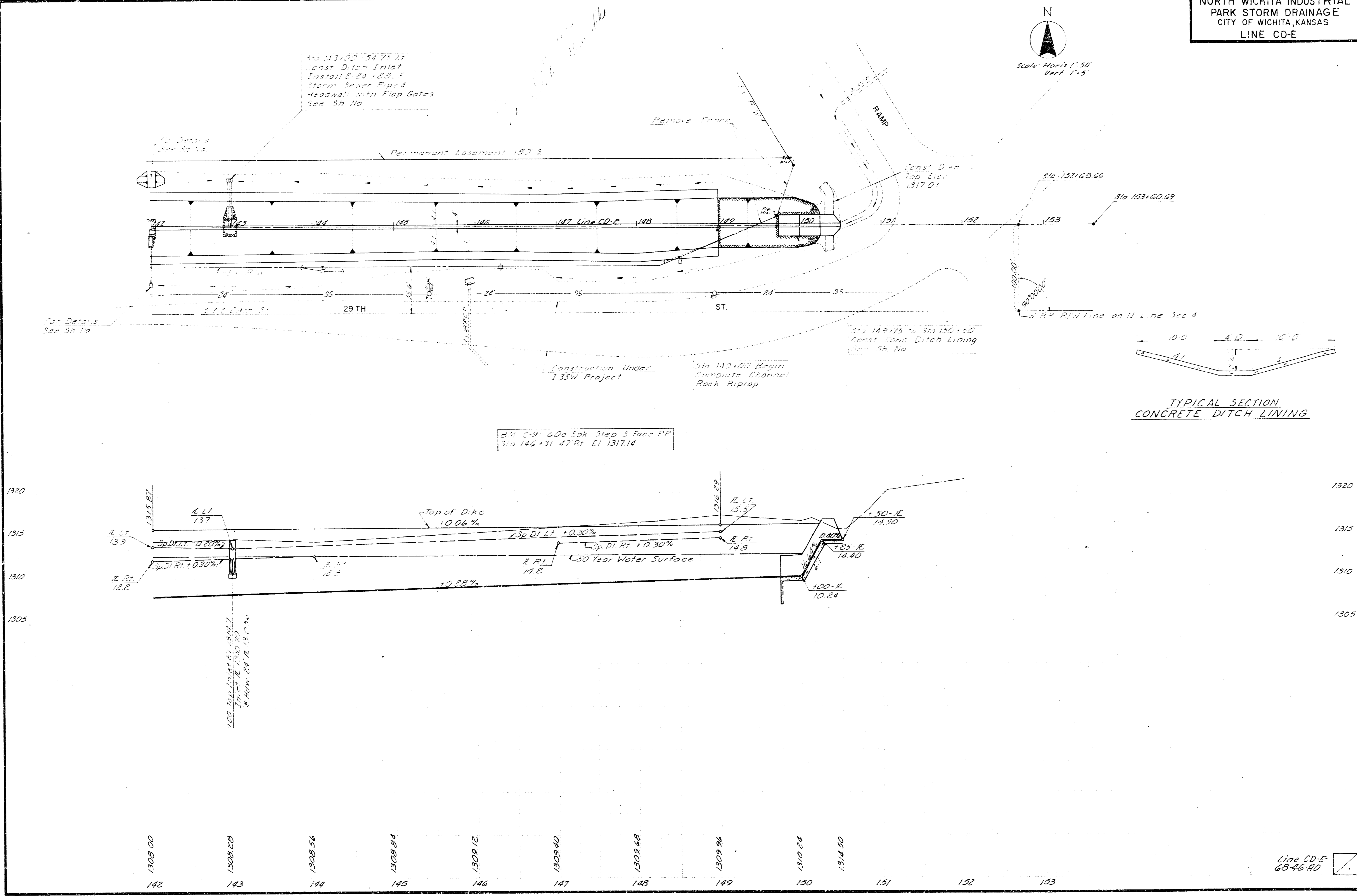
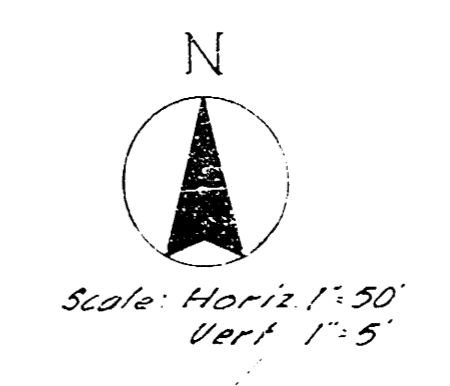
PROFILE - INTERCEPTOR DITCH

68-46-70

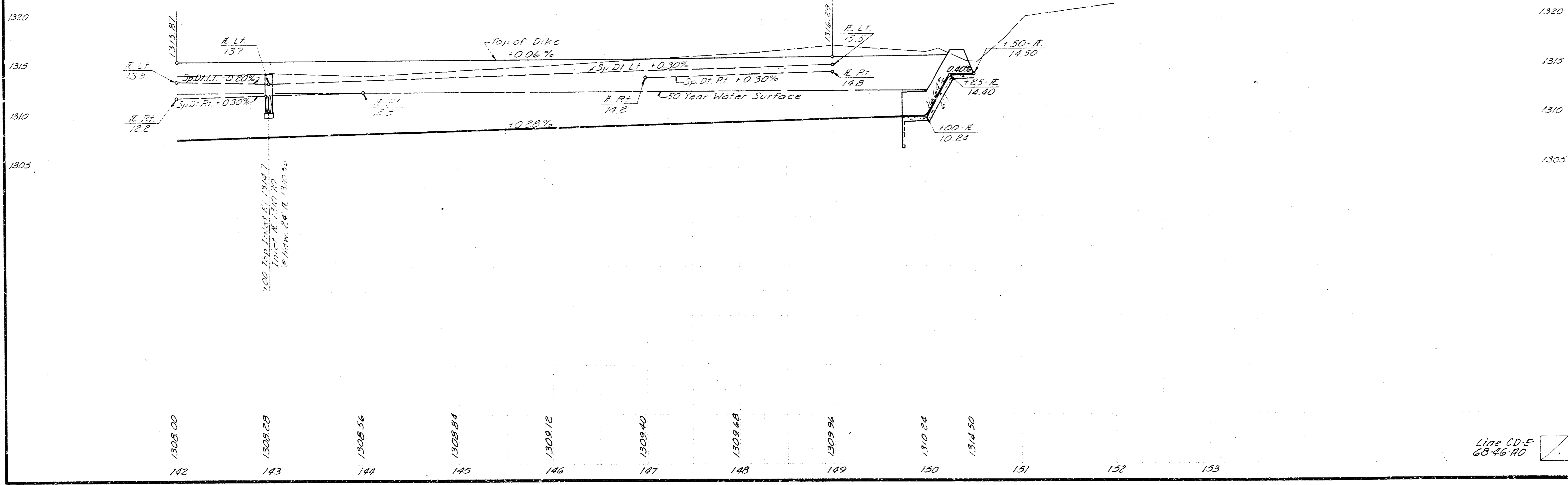
**NORTH WICHITA INDUSTRIAL  
PARK STORM DRAINAGE  
CITY OF WICHITA, KANSAS  
LINE CD-E**



NORTH WICHITA INDUSTRIAL  
 PARK STORM DRAINAGE  
 CITY OF WICHITA, KANSAS  
 LINE CD-E



BY CIP 60x Spk Step 3 Face PP  
 Sta 146+31.47 Rt. El. 1317.14

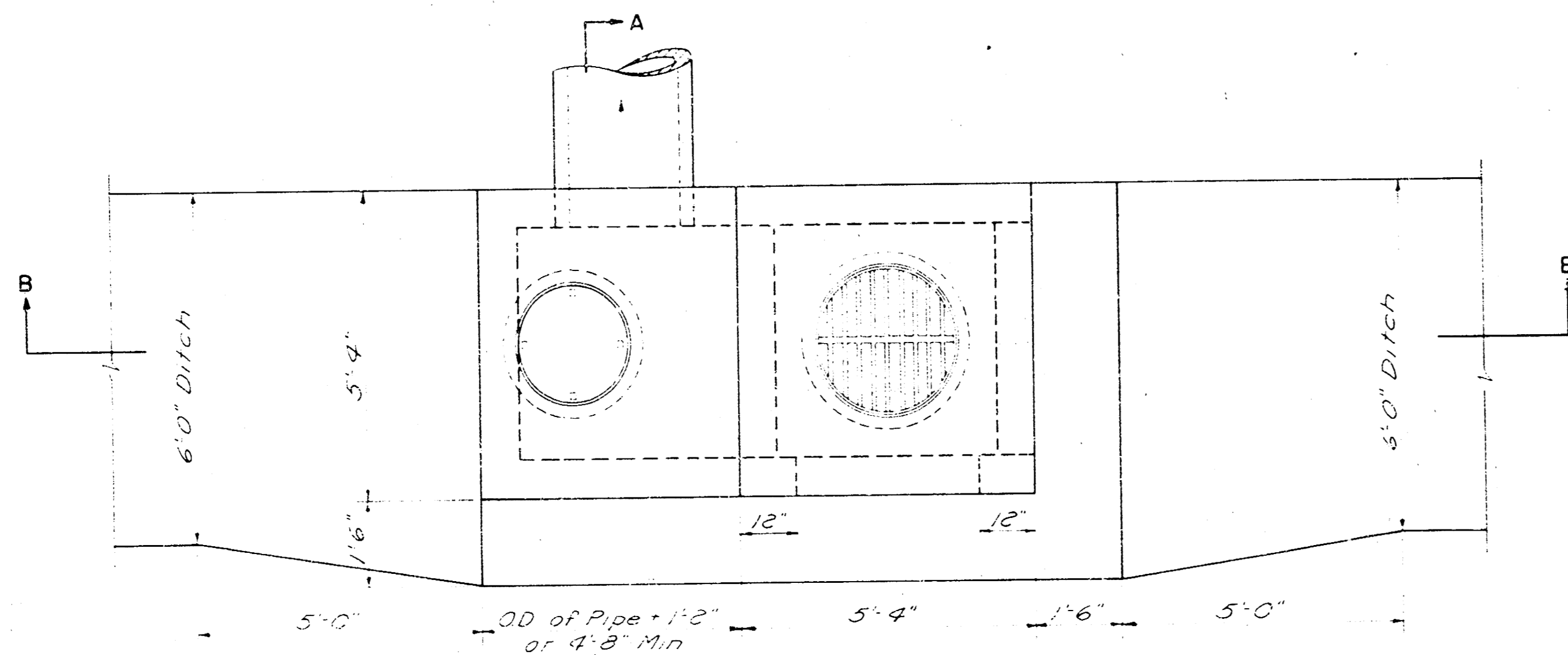


Line CD-E  
 68-46-90

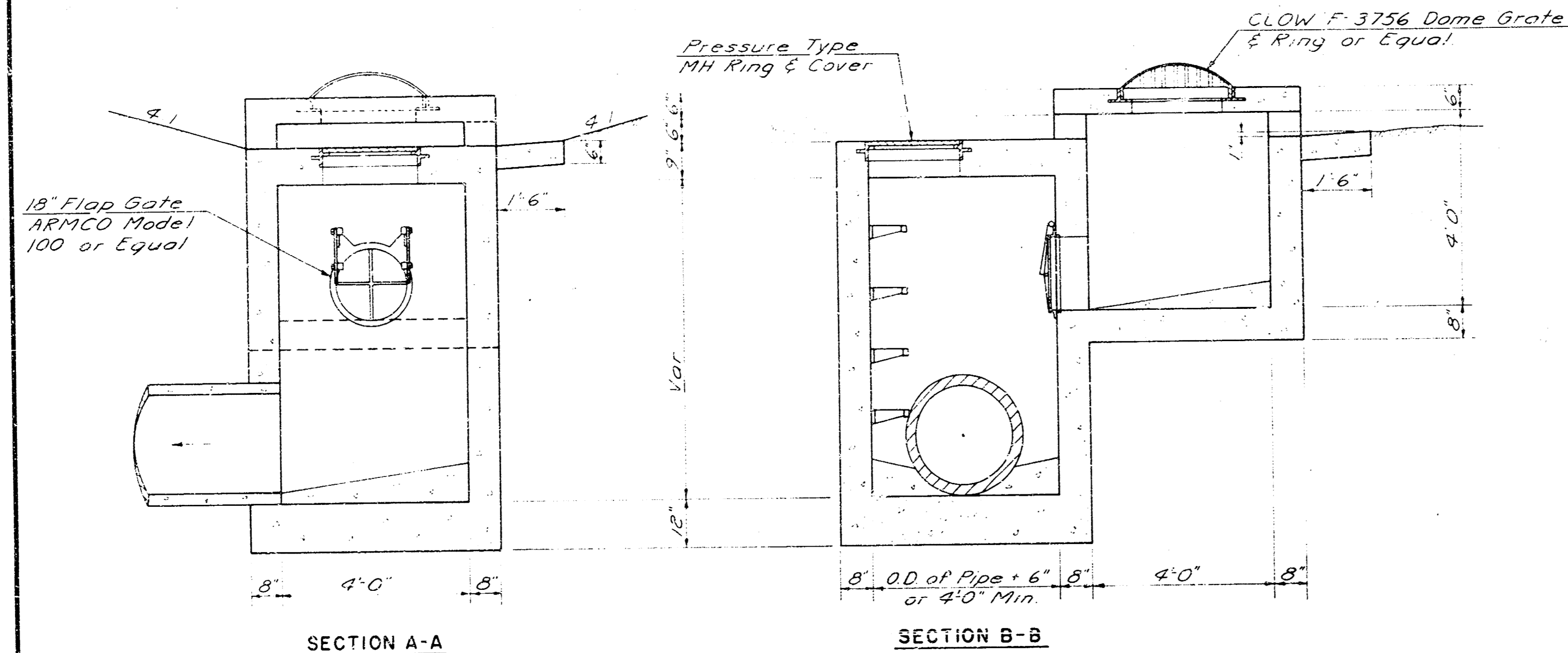








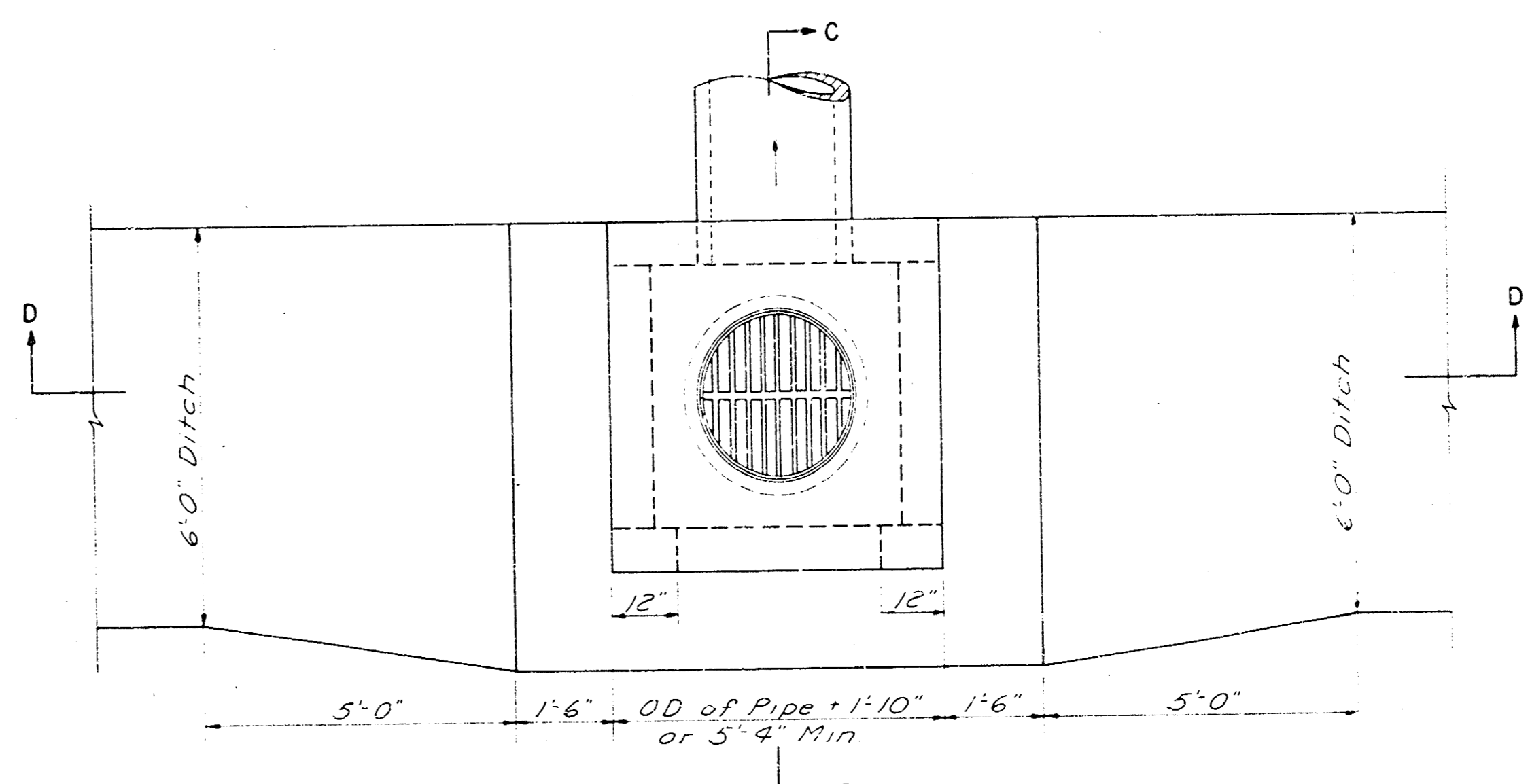
PLAN



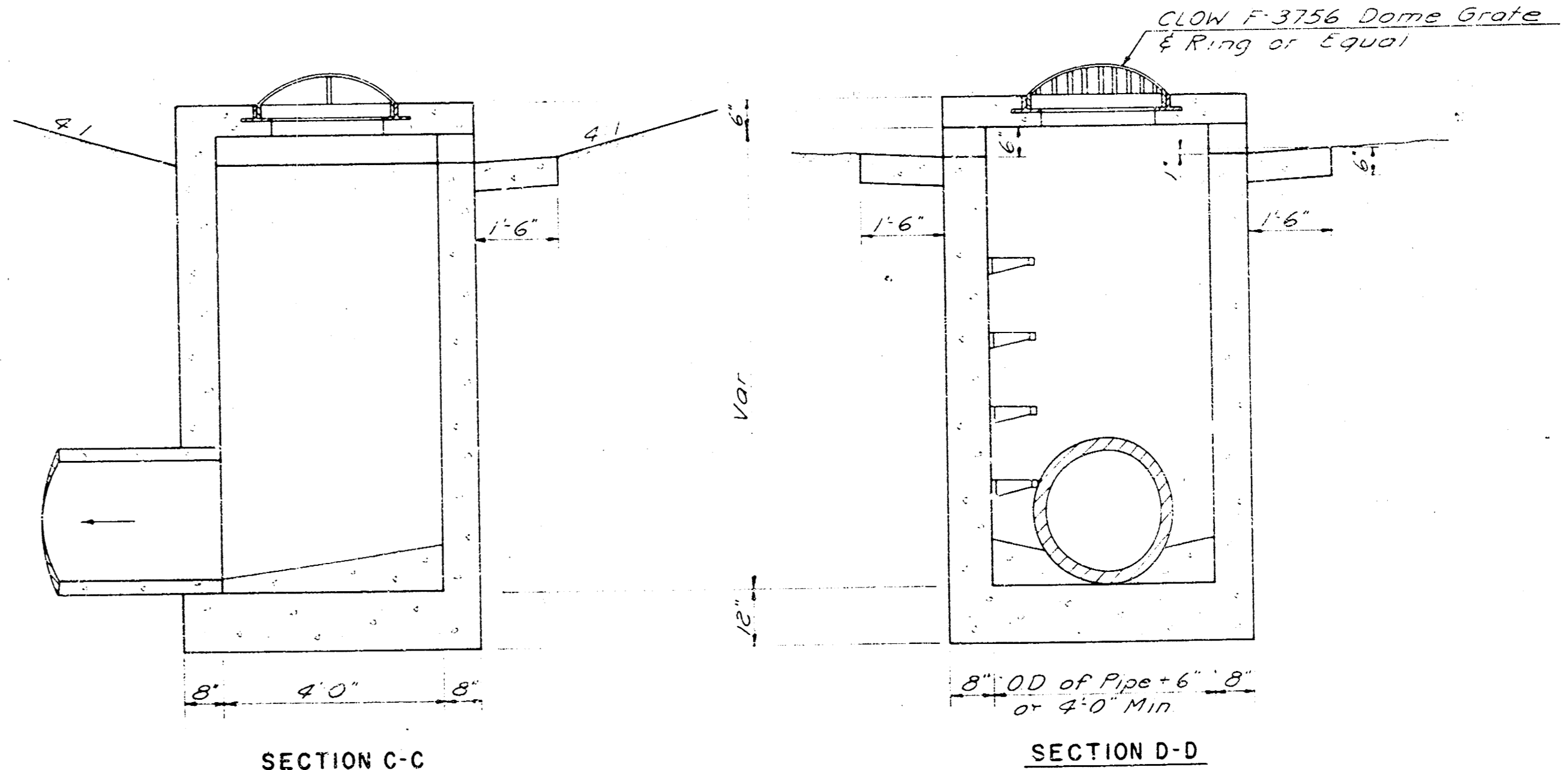
SECTION A-A

SECTION B-B

DITCH INLET TYPE II



PLAN

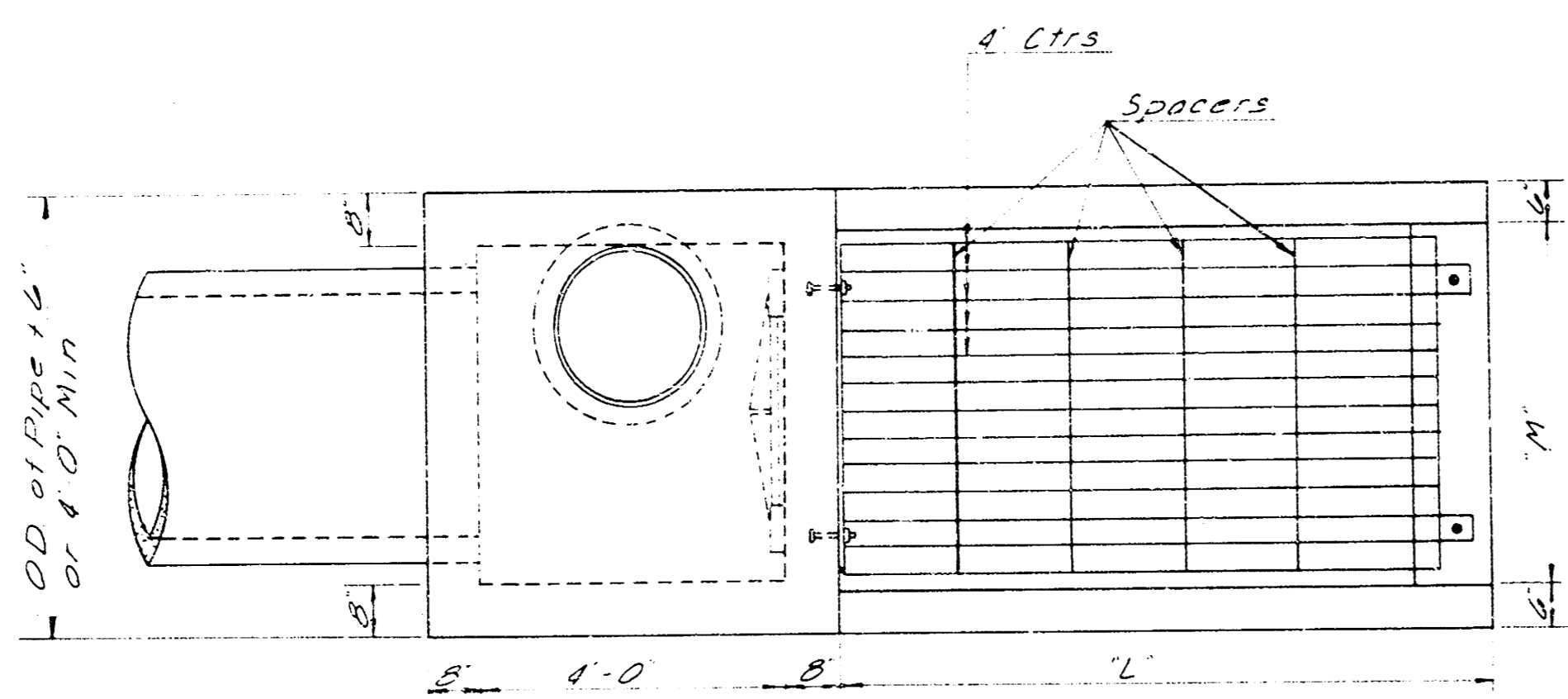


SECTION C-C

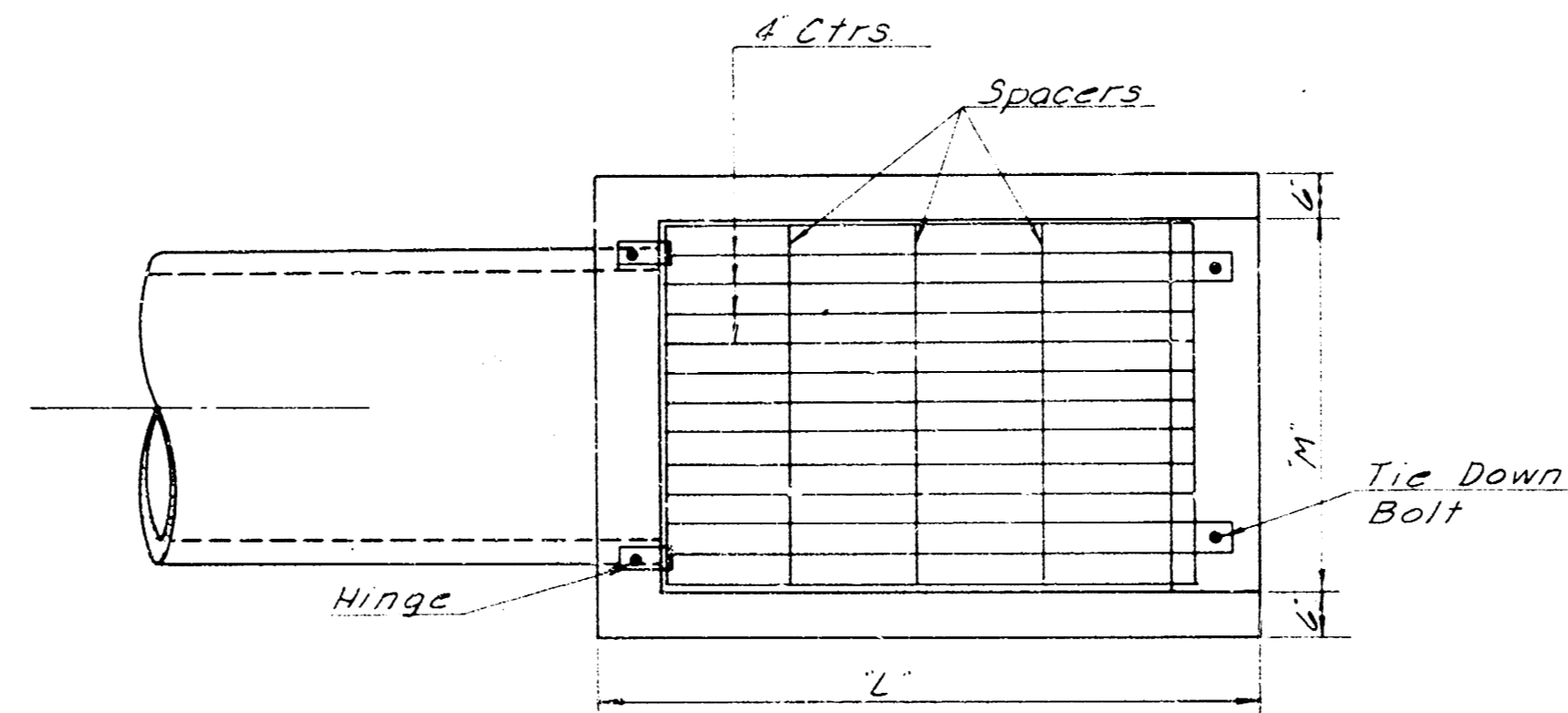
SECTION D-D

DITCH INLET TYPE I

DESIGN	NORTH WICHITA INDUSTRIAL PARK STORM DRAINAGE CITY OF WICHITA, KANSAS
DR BY	
CK BY	
DATE	DITCH INLET DETAILS
JOB NO	
VAN DOREN-HAZARD-STALLINGS-SCHNACKE ENGINEERS ARCHITECTS . . . TOPEKA, KANSAS	
SHEET	
OF	

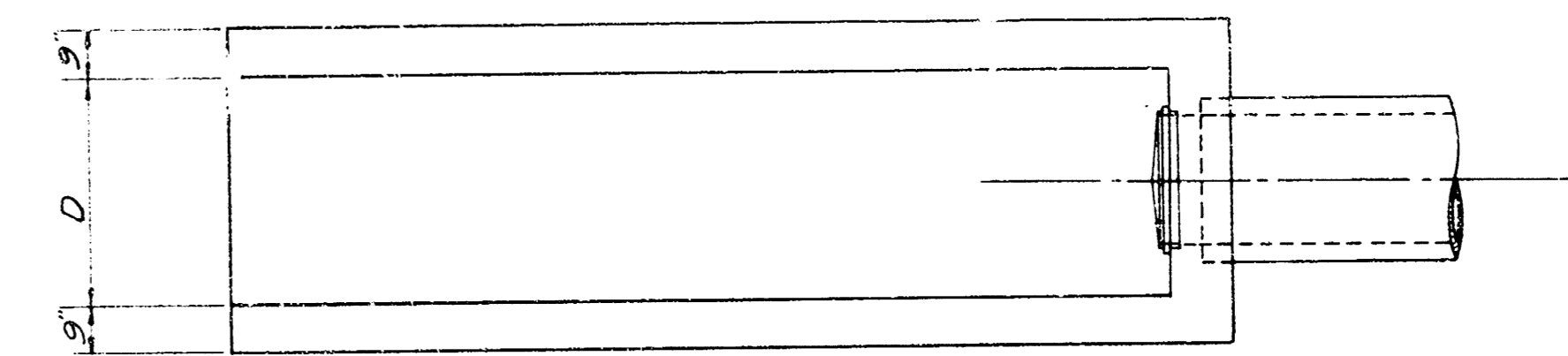


INLET HEADWALL PLAN  
TYPE II

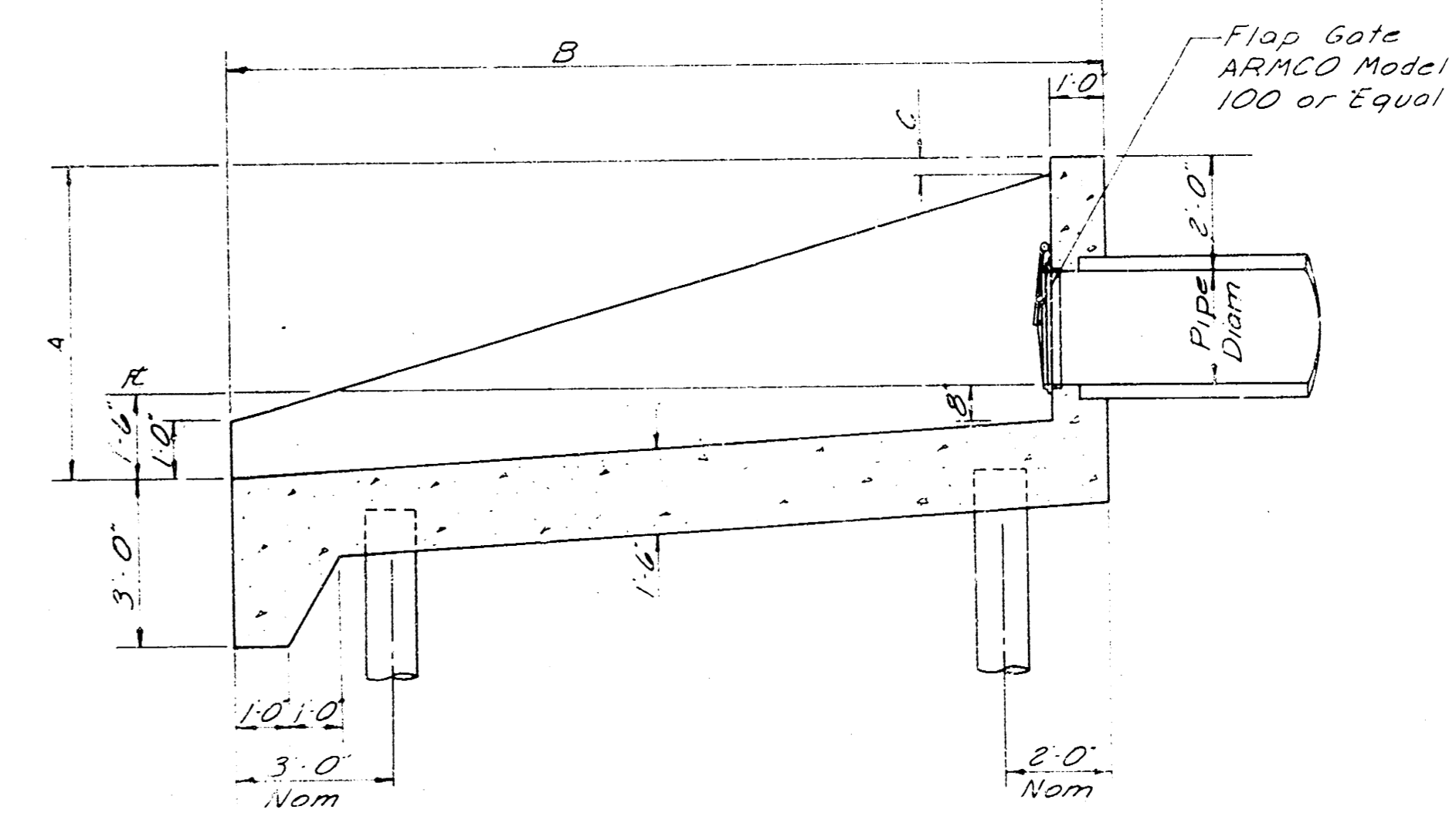


INLET HEADWALL PLAN  
TYPE I

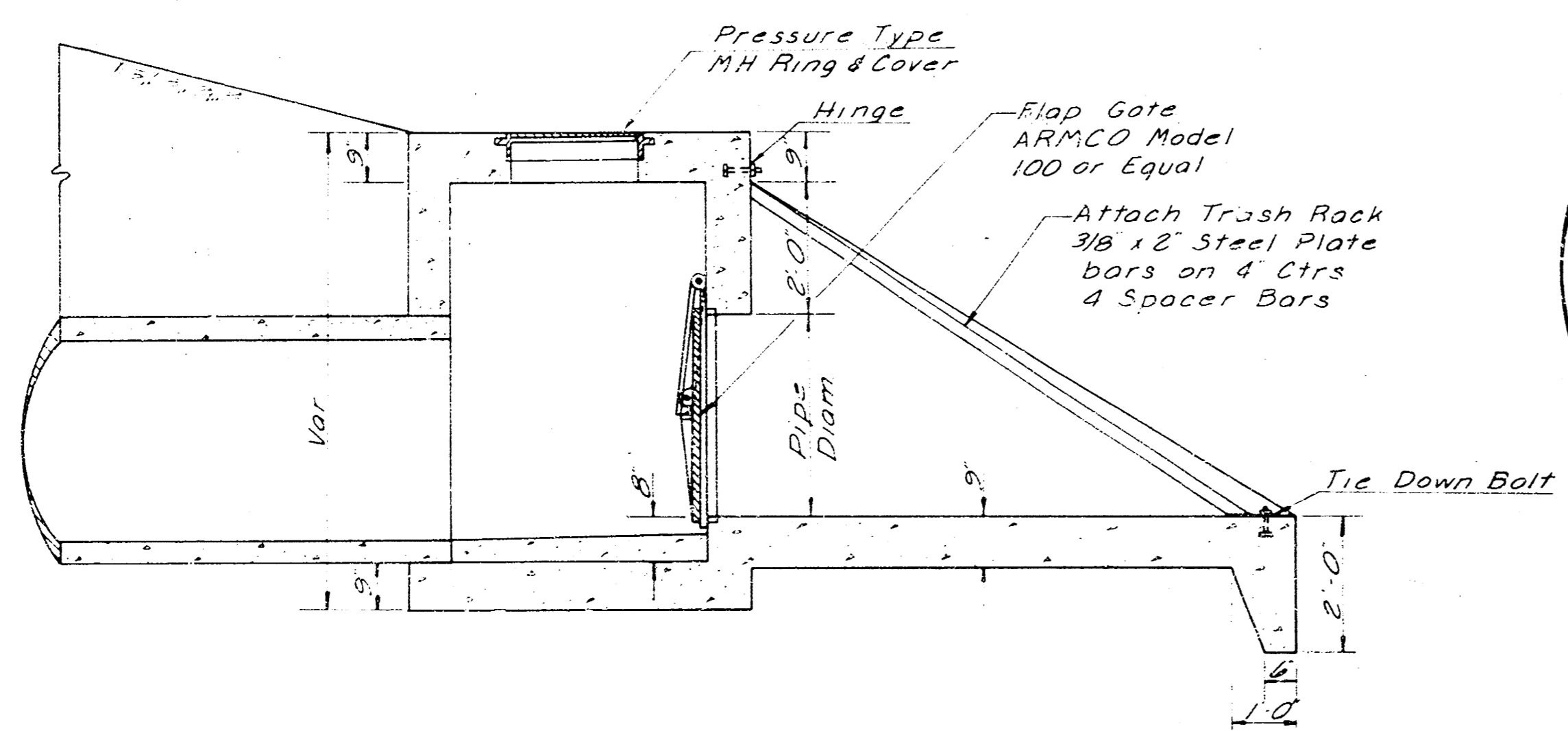
PIPE SIZE	W	L	M
36	4.0	7.9	4.2
48	5.2	9.9	5.5



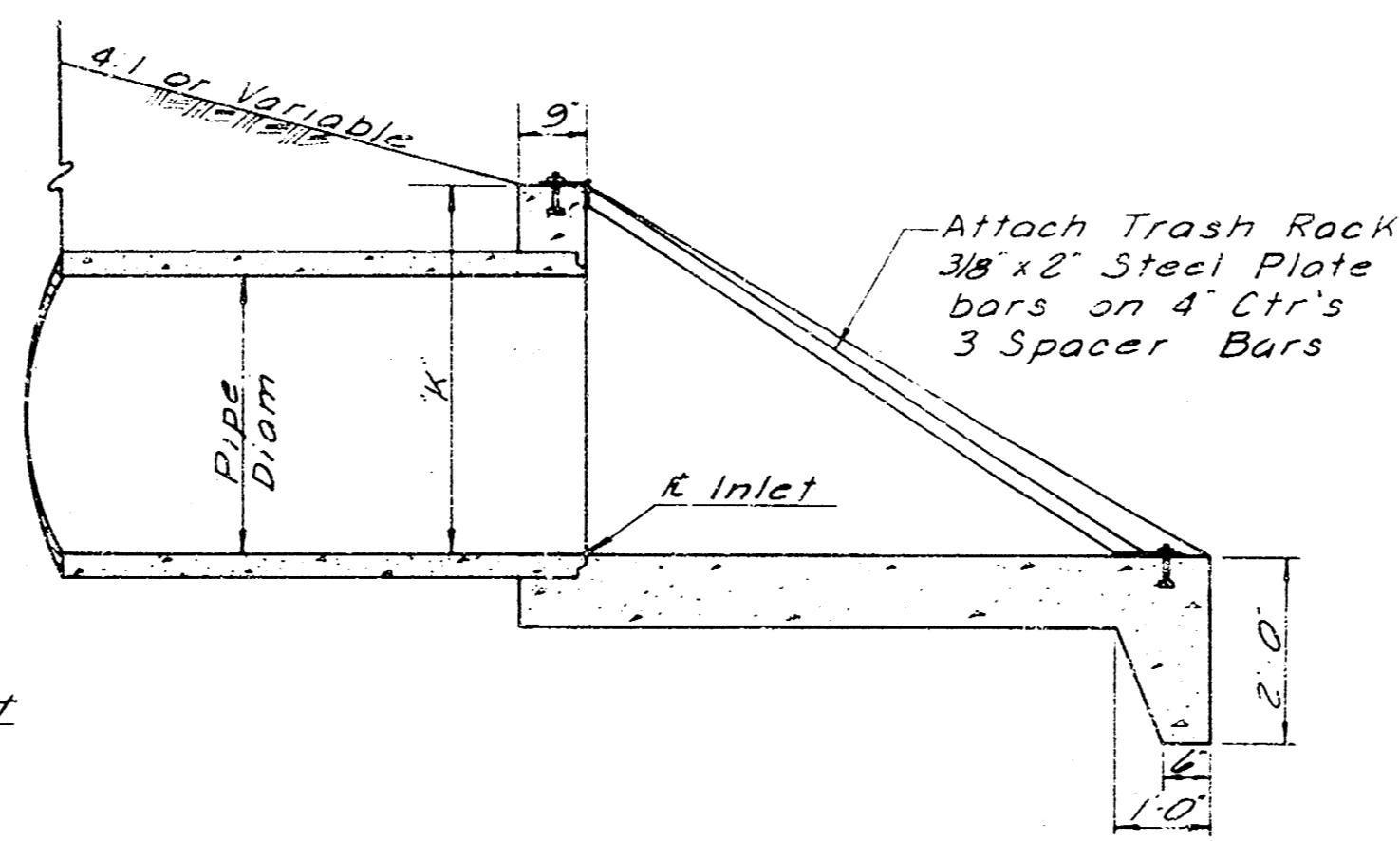
OUTLET HEADWALL PLAN



OUTLET HEADWALL SECTION



INLET HEADWALL SECTION  
TYPE II



INLET HEADWALL SECTION  
TYPE I

PIPE SIZE	A	B	C	D
15	4.9	5.7 1/2	9.4 1/2	11.3
18	5.0	6.0	10.0	12.0
24	5.6	6.9	11.3	13.0
30	6.0	7.6	12.6	15.0
36	6.6	8.3	13.9	16.6
42	7.0	9.0	15.0	18.0
48	7.6	9.9	16.3	19.6
54	8.0	10.6	17.6	21.0
60	8.6	11.3	18.9	22.6

\* For Dbl 24 Pipes D=7'-0" - Allow 12" Min between pipes.

DESIGN	NORTH WICHITA INDUSTRIAL
DR BY	PARK STORM DRAINAGE
CK BY	
DATE	
JOB NO	
HEADWALLS & DITCH INLET DETAILS	
VAN DOREN-HAZARD-STALLINGS-SCHNACKE	SHEET
ENGINEERS-ARCHITECTS . . . TOPEKA, KANSAS	OF