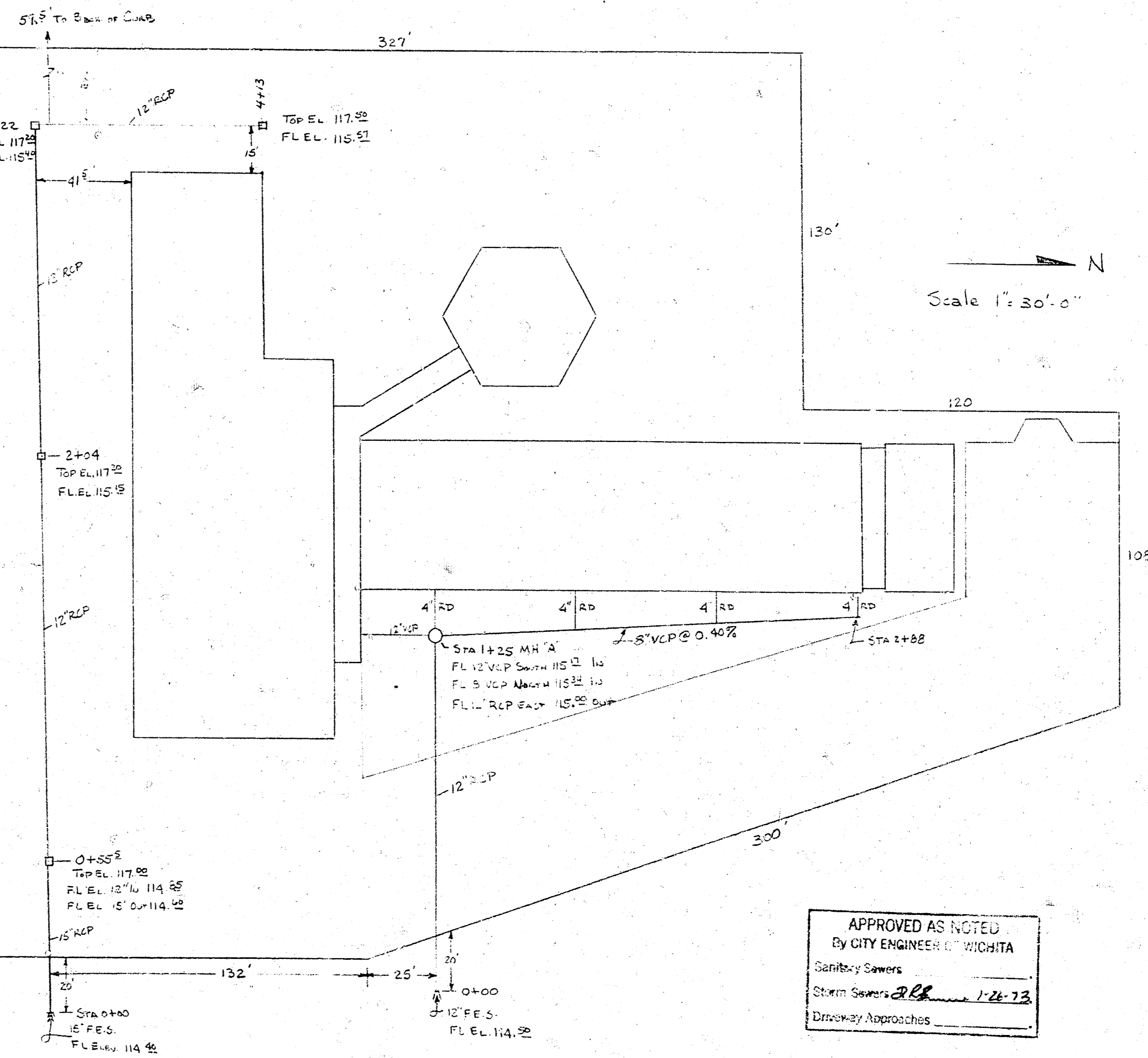


HOOPER ROAD

U.S. 54 (NEULAND ST) METEOROLOGICAL LAINE



STORM SEWER QUANTITIES

15" RCP	56 LF
12" RCP	452 LF
12" VCP	45 LF
5" VCP	125 LF
Manhole "A"	1 EA
2X Inlets	4 EA

APPROVED AS NOTED
 By CITY ENGINEER OF WICHITA
 Sanitary Sewers
 Storm Sewers *RL* 1-24-73
 Driveway Approaches

NOTE TO CONTRACTOR
 This project will be constructed under the supervision of the CITY ENGINEER and conforming to the SPECIFICATIONS of the CITY OF WICHITA. The CONTRACTOR will reimburse the City of Wichita for all cost of Engineering, Plans, and Inspection.

SHERATON INN
 WICHITA KANSAS
PLOT PLAN
 STORM DRAINAGE
 MID STATES CONSULTING, INC.
 NOVEMBER - 1972 AS BUILT DRAWING