

**BENCH MARKS**

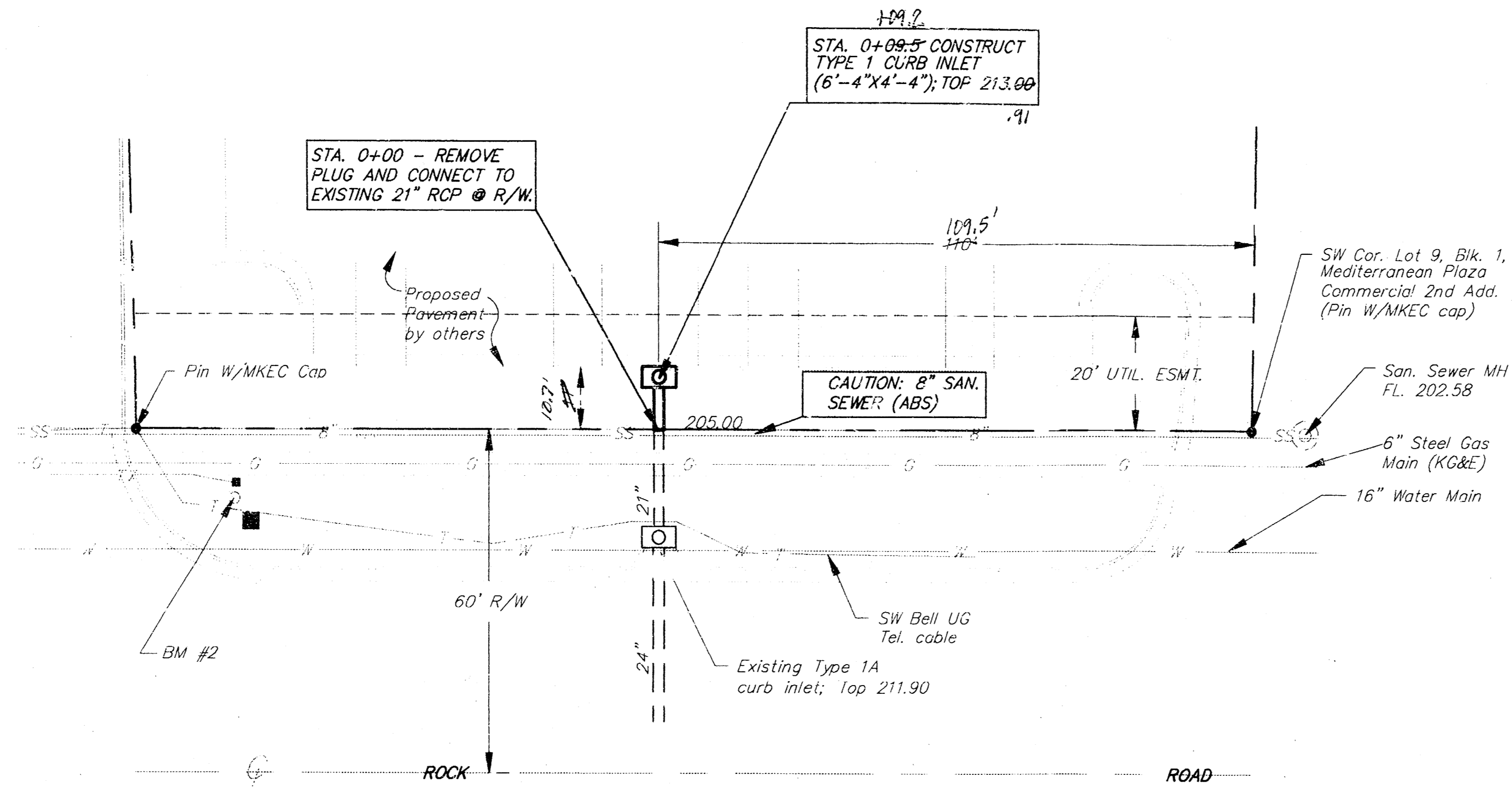
- R.R. SPIKE IN EAST FACE OF POWER POLE NORTH OF THE S.W. COR. LOT 8, BLK 1  
ELEV= 214.74
- R.R. SPIKE IN WEST SIDE OF POWER POLE, NEAR NW COR. LOT 9, BLK 1  
ELEV= 214.10

**GENERAL NOTES**

- All work on this project shall conform to the Standard Specifications for Storm Sewer Construction of the City of Wichita.
- Locating dimensions are to center of inside face of front inlet wall.
- All areas within public right-of-way which may be disturbed by Contractor's operations shall be restored in accordance with City of Wichita Administrative Regulation AR-78.
- The Contractor shall notify Kansas One-Call (687-2470) a minimum of 24 hours prior to any excavation.

**RUNOFF CALCULATIONS**

By Rational Formula:  $Q=CIA$   
 Impervious Area = 31168 S.F.  
 Pervious Area = 2492 S.F.  
 D.A. (to Storm Sewer) = 0.77 ac.  
 $C_{impervious} = 0.95$   
 $C_{pervious} = 0.65$   
 $C_{weighted} = 0.93$   
 Assume time of concentration = 10 min.  
 $I_5 = 3.34 \text{ in./hr.}$      $I_{100} = 8.54 \text{ in./hr.}$   
 $Q_5 = 3.8 \text{ cfs}$      $Q_{100} = 6.1 \text{ cfs}$

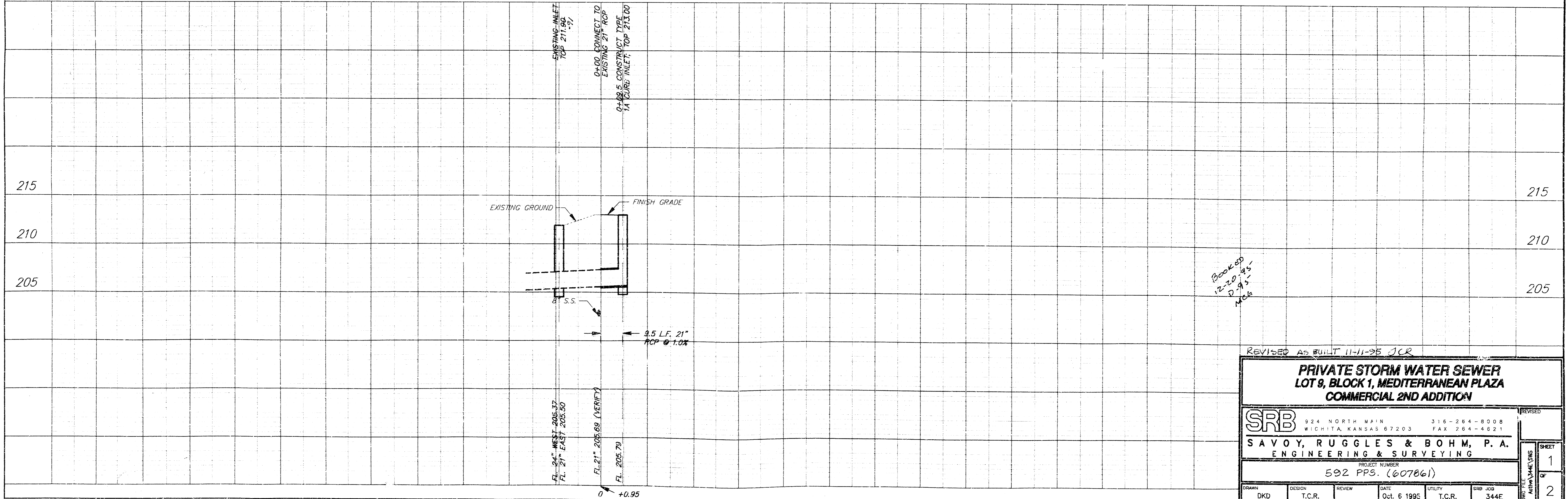
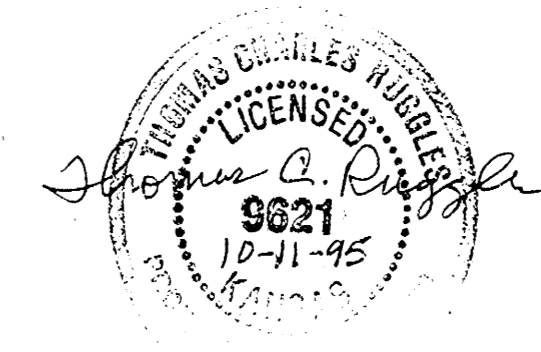
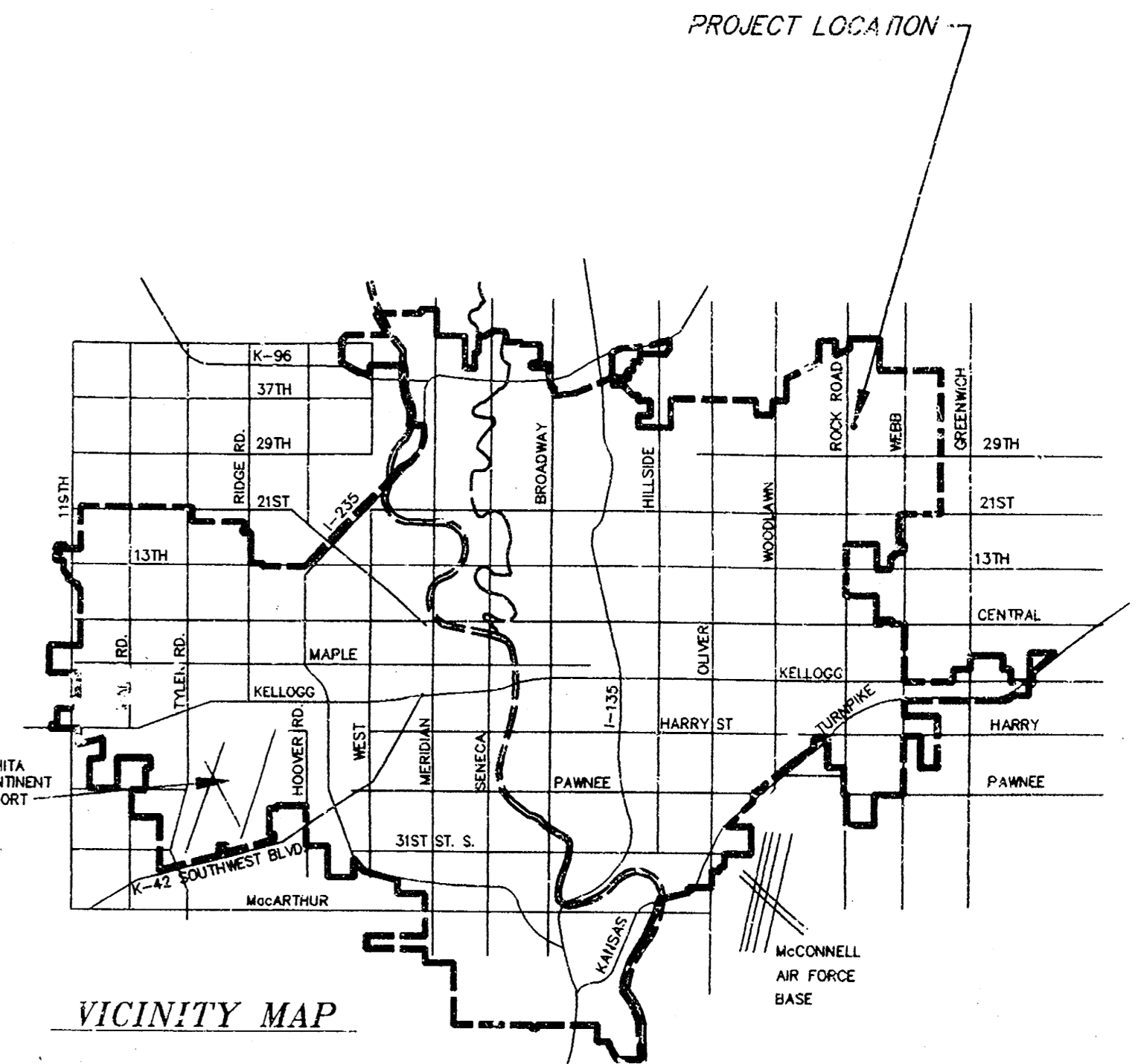


**SRB**  
 SCALE:  
 1"=20' PLAN  
 1"=5' PROFILE (V.)

APPROVED AS NOTED  
 BY CITY ENGINEER OF WICHITA

Sanitary Sewers \_\_\_\_\_  
 Storm Sewers VRH 10/11/95  
 Driveway Approaches \_\_\_\_\_  
 Water Mains \_\_\_\_\_  
 Paving \_\_\_\_\_

NOTE TO CONTRACTORS  
 Inspection and testing for this project, are to be provided by a Licensed Consulting Engineering Firm under contract with the Owner/Developer. Said inspection to be in accordance with the City of Wichita standard construction engineering practices and certified by a Licensed Professional Engineer. No work shall be performed in dedicated easements or public right-of-way by the Contractor without such inspection, nor shall any work be commenced without written authorization by the City Engineer.



Book 89  
 12-20-95  
 D.A.S.  
 M.B.

REVISED AS BUILT 11-11-95 JCR

**PRIVATE STORM WATER SEWER  
 LOT 8, BLOCK 1, MEDITERRANEAN PLAZA  
 COMMERCIAL 2ND ADDITION**

**SRB** 924 NORTH MAIN 316-264-8008  
 WICHITA, KANSAS 67203 FAX 264-4621

**SAVOY, RUGGLES & BOHM, P. A.  
 ENGINEERING & SURVEYING**

PROJECT NUMBER  
 592 PPS. (607861)

DRAWN DKD	DESIGN T.C.R.	REVIEW	DATE Oct. 6 1995	UTILITY T.C.R.	SRB JOB 344E
--------------	------------------	--------	---------------------	-------------------	-----------------

REVISIONS  
 1  
 2