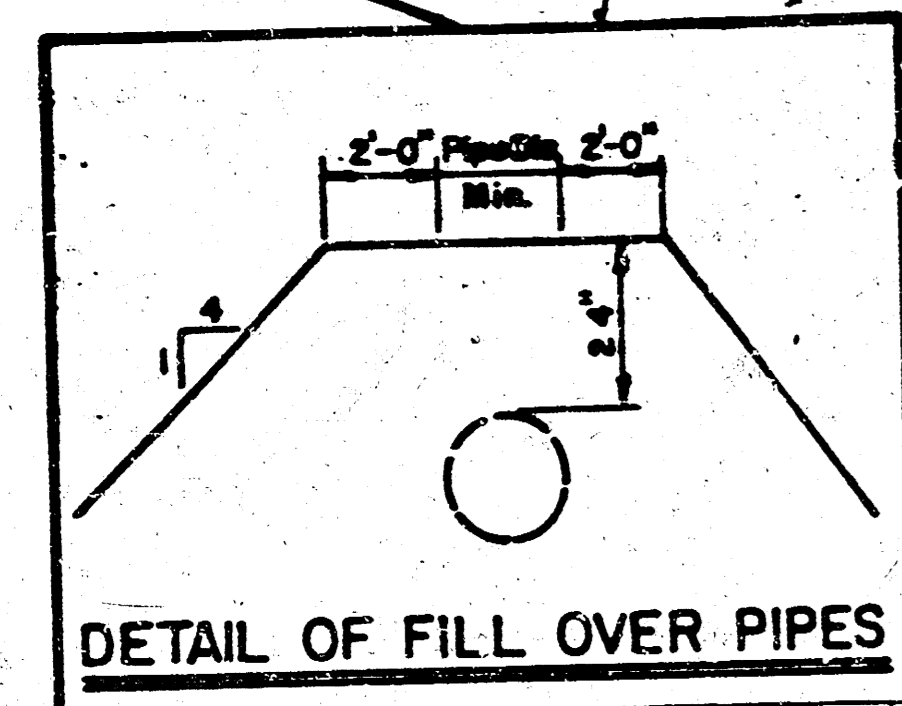
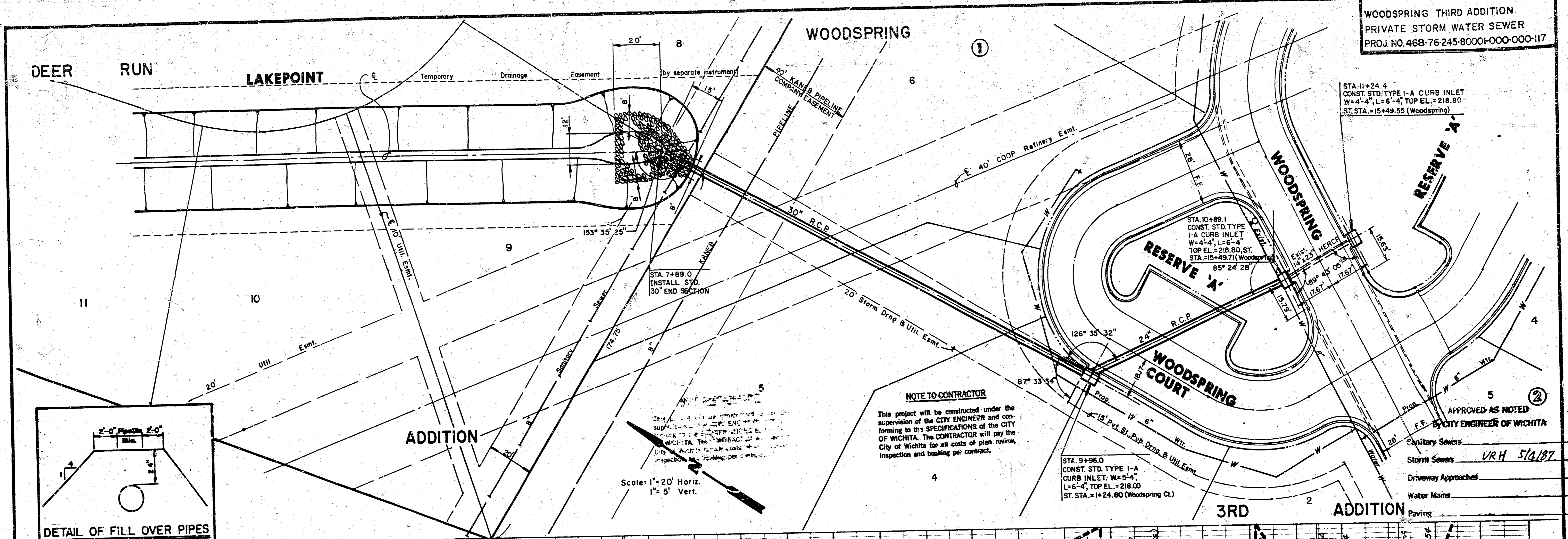
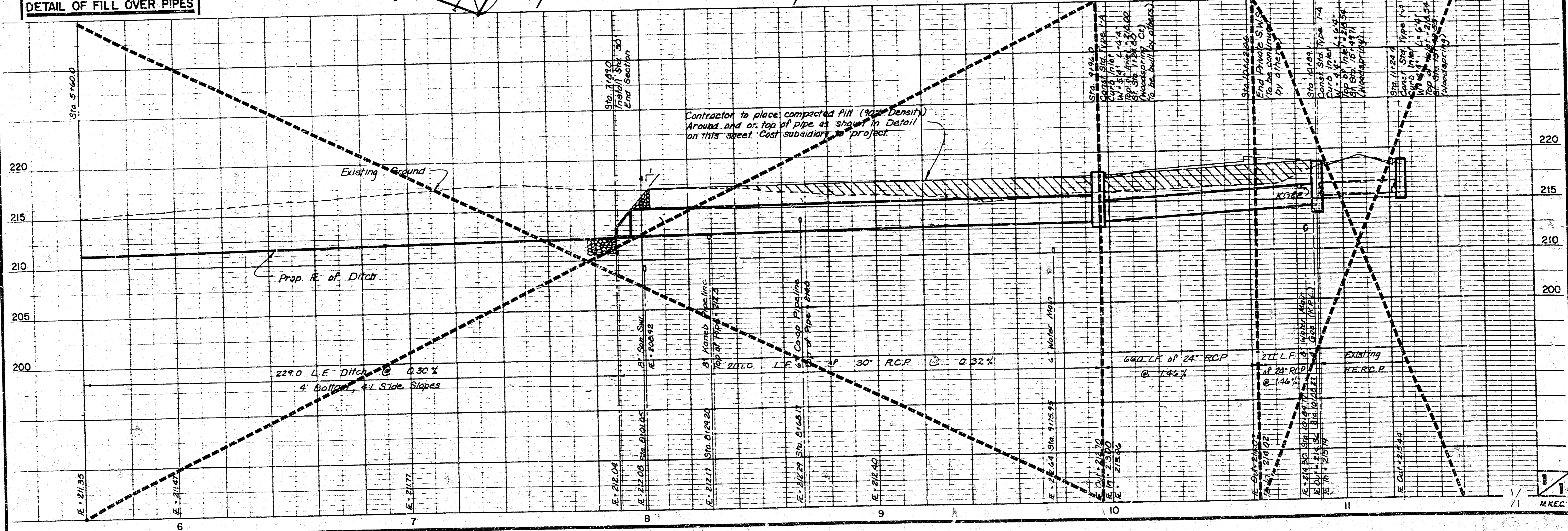


WOODSPRING THIRD ADDITION  
PRIVATE STORM WATER SEWER  
PROJ. NO. 468-76-245-8000-000-000-117



**NOTE TO CONTRACTOR**  
This project will be constructed under the supervision of the CITY ENGINEER and conforming to the SPECIFICATIONS of the CITY OF WICHITA. The CONTRACTOR will pay the City of Wichita for all costs of plan review, inspection and booking per contract.

Scale: 1" = 20' Horiz.  
1" = 5' Vert.



10 10 5 8

FILMED FROM THE BEST