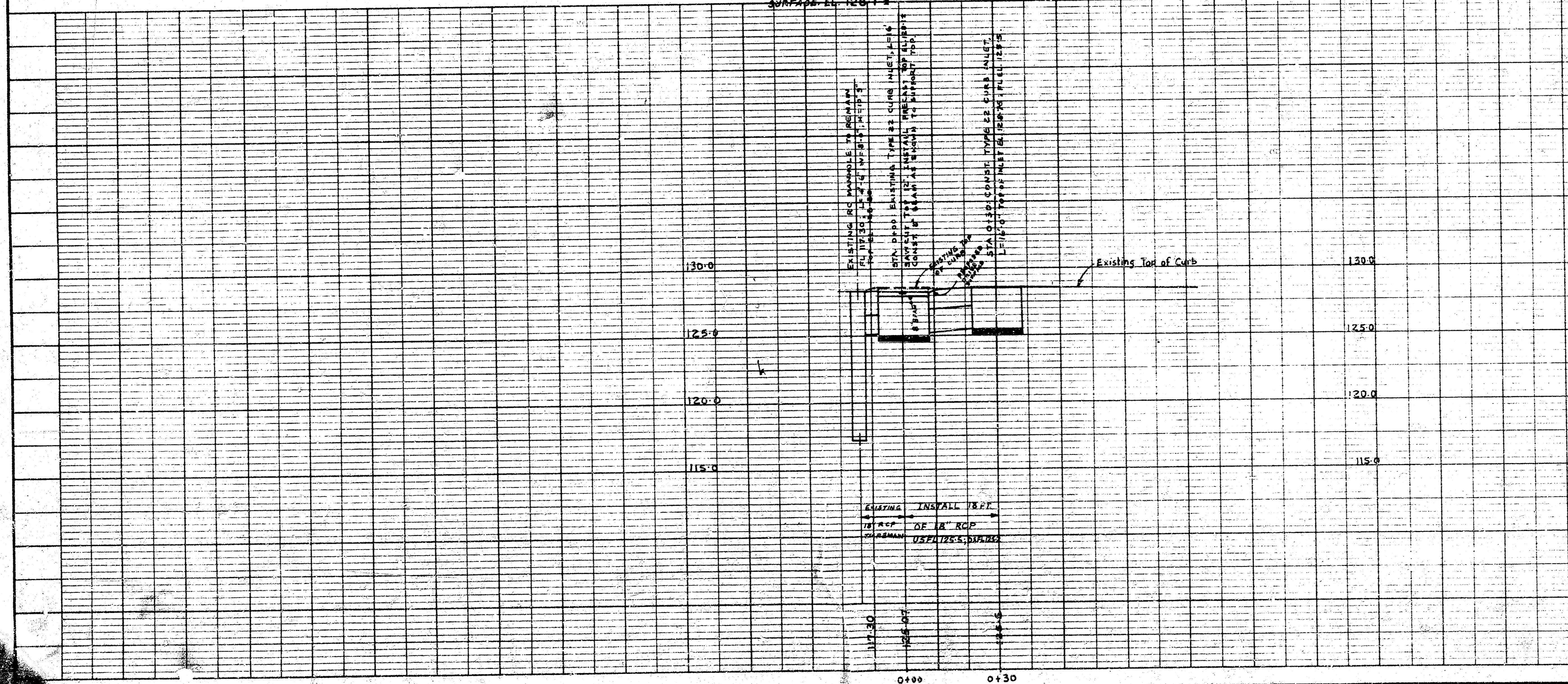
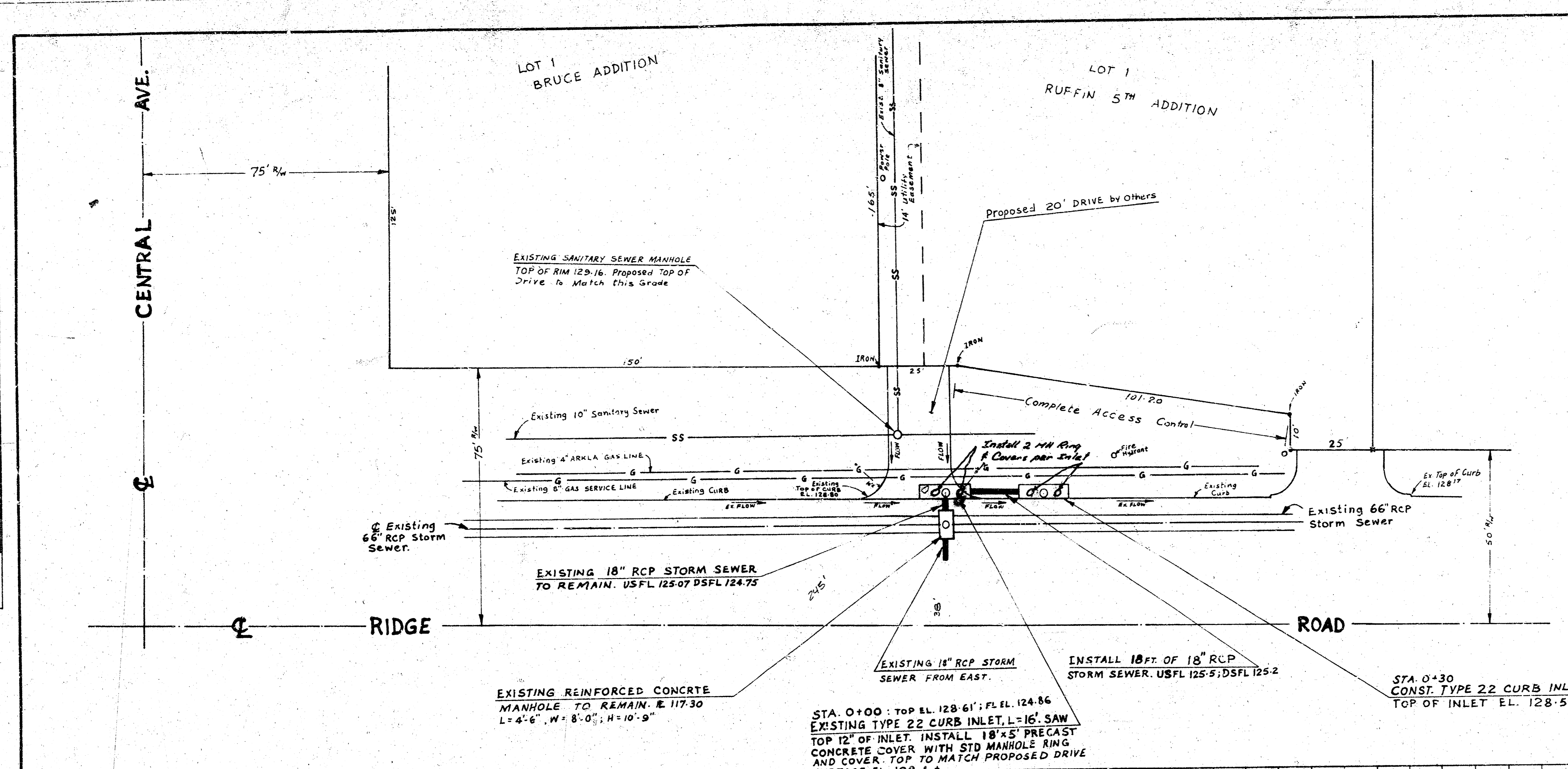


CITY OF WICHITA
 APPROVED: Approval does not relieve the contractor from any responsibility for errors or omissions from the contract requirements or for any deficiencies of equipment, work, or materials.
 Date: 11/16/82
 Engineering Div. *SOB*

NOTE TO CONTRACTOR
 This project will be constructed under the supervision of the CITY ENGINEER and conforming to the SPECIFICATIONS of the CITY OF WICHITA. The CONTRACTOR will prepay the City of Wichita for all costs of inspection.

BENCH MARK: RIDGE ROAD and CENTRAL AVE. ELEV 131.597
 CITY OF WICHITA BENCH MARK DISC, 52 FT SOUTH AND 44 FT WEST OF CENTER LINE OF BOTH (2" DEEP IN AC DRIVE)



STORM SEWER MODIFICATION AND INLET RELOCATION FOR TOWN AND COUNTRY MARKET ON RIDGE ROAD, NORTH OF CENTRAL AVENUE.
 CITY OF WICHITA PRIVATE PROJ. NO. 468.76.245 80000 000 000 000
 DECEMBER 1982.

DATE	
BY	
REVISION	
NOTED	
IN CHARGE	
NO.	
PLAN	
NOTE BOOK	
NO.	

DATE	
BY	
REVISION	
NOTED	
IN CHARGE	
NO.	
PROFILE	
NOTE BOOK	
NO.	

10 5 4 5