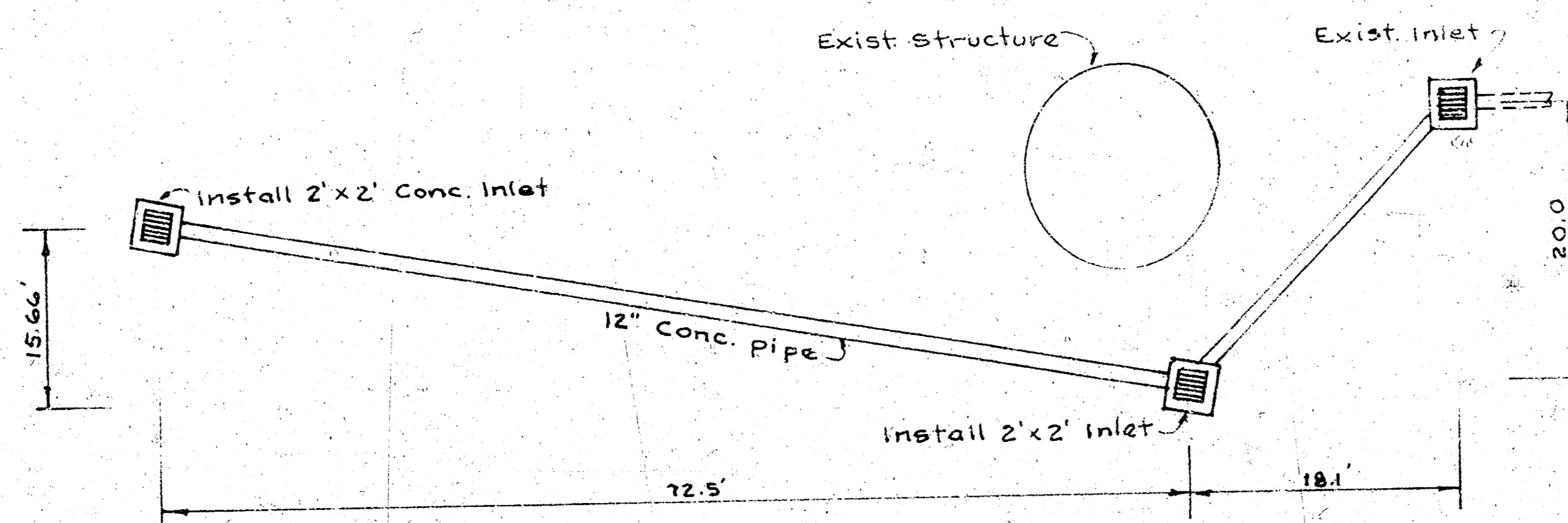
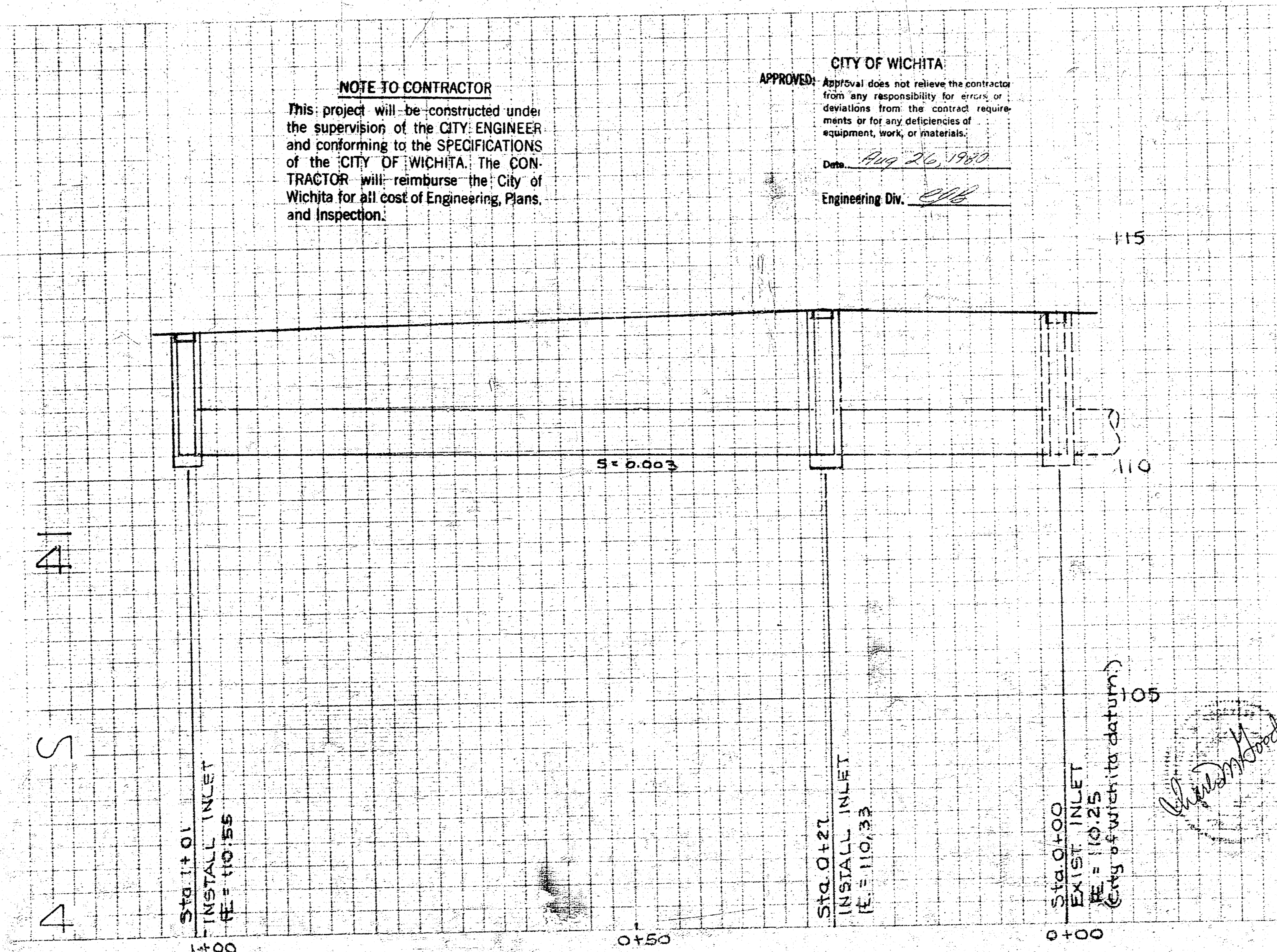


North  
Scale: 1" = 10'



**NOTE TO CONTRACTOR**  
This project will be constructed under the supervision of the CITY ENGINEER and conforming to the SPECIFICATIONS of the CITY OF WICHITA. The CONTRACTOR will reimburse the City of Wichita for all cost of Engineering, Plans, and Inspection.

**CITY OF WICHITA**  
APPROVED: Approval does not relieve the contractor from any responsibility for errors or deviations from the contract requirements or for any deficiencies of equipment, work, or materials.  
Date: Aug 26, 1980  
Engineering Div. [Signature]



**STORM DRAIN**  
STEFFENS DAIRY FOODS

*[Handwritten signature]*