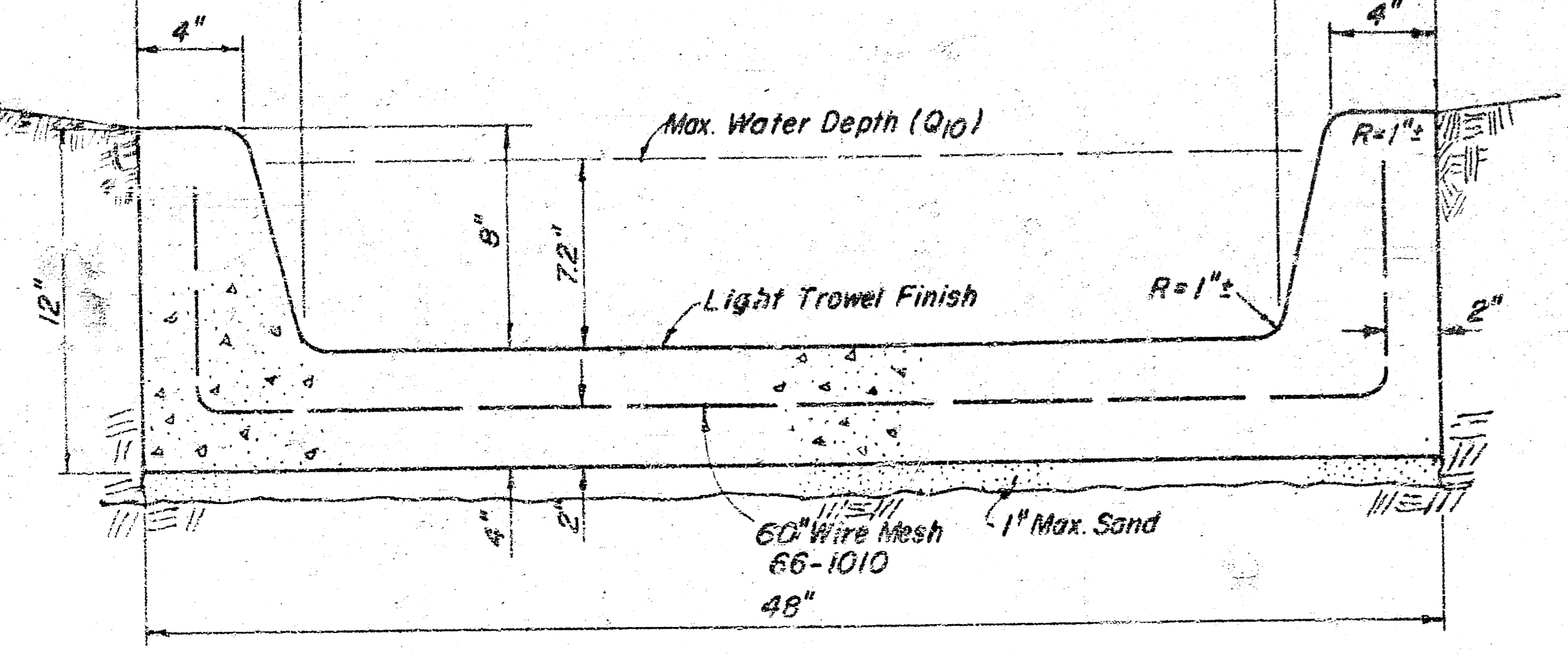


NOTE TO CONTRACTOR
 This project will be constructed under the supervision of the CITY ENGINEER and conforming to the SPECIFICATIONS of the CITY OF WICHITA.

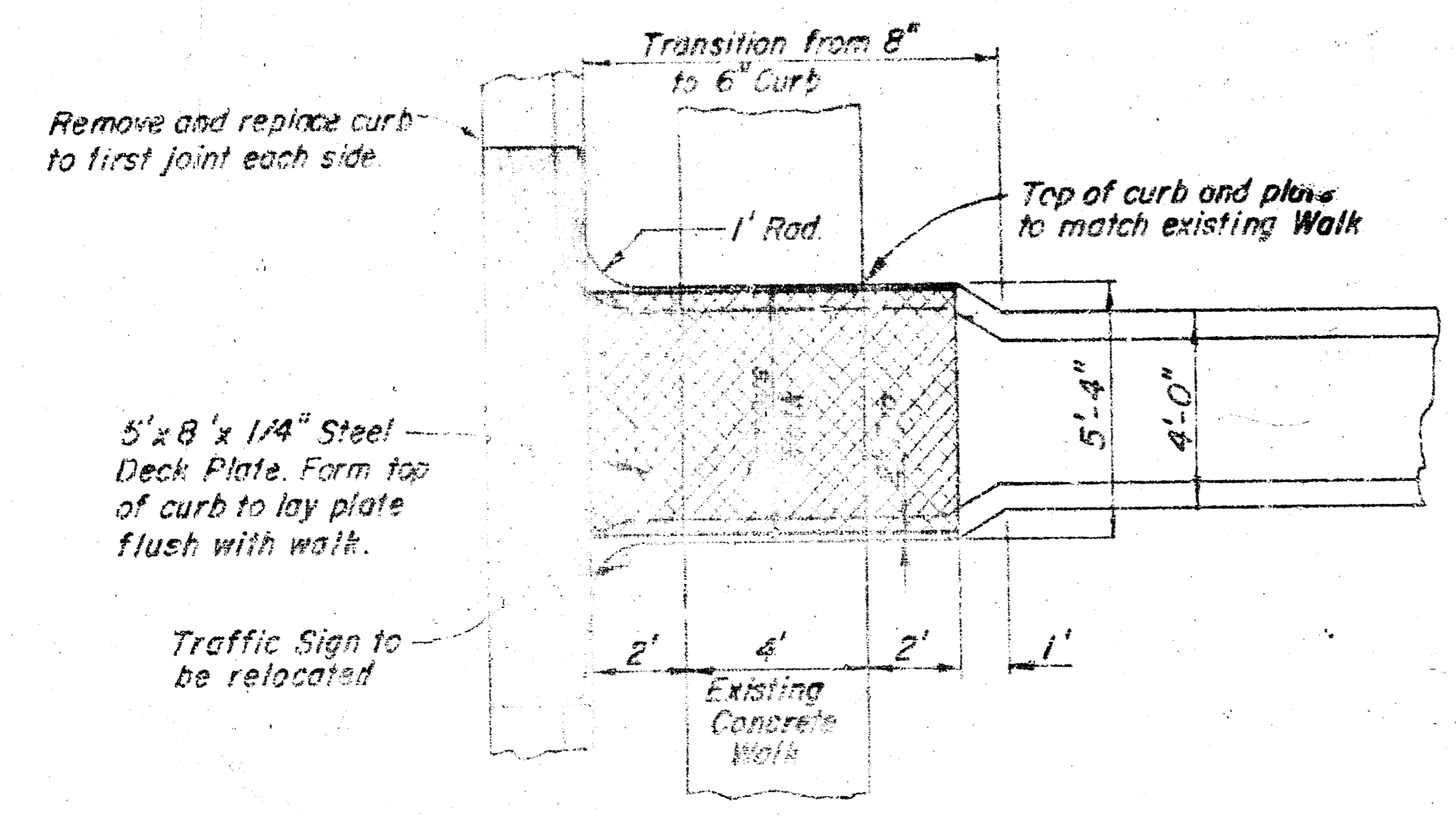


TYPICAL SECTION CONCRETE CHANNEL
 1" = 2"

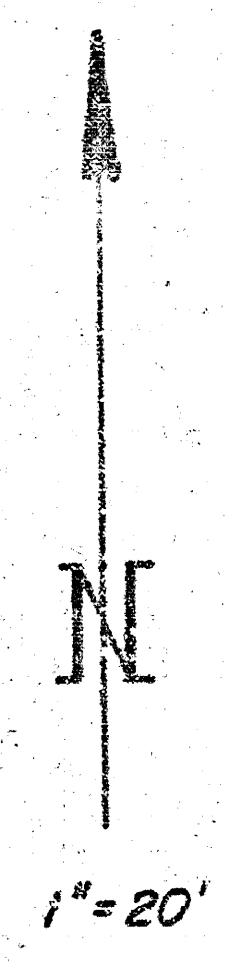
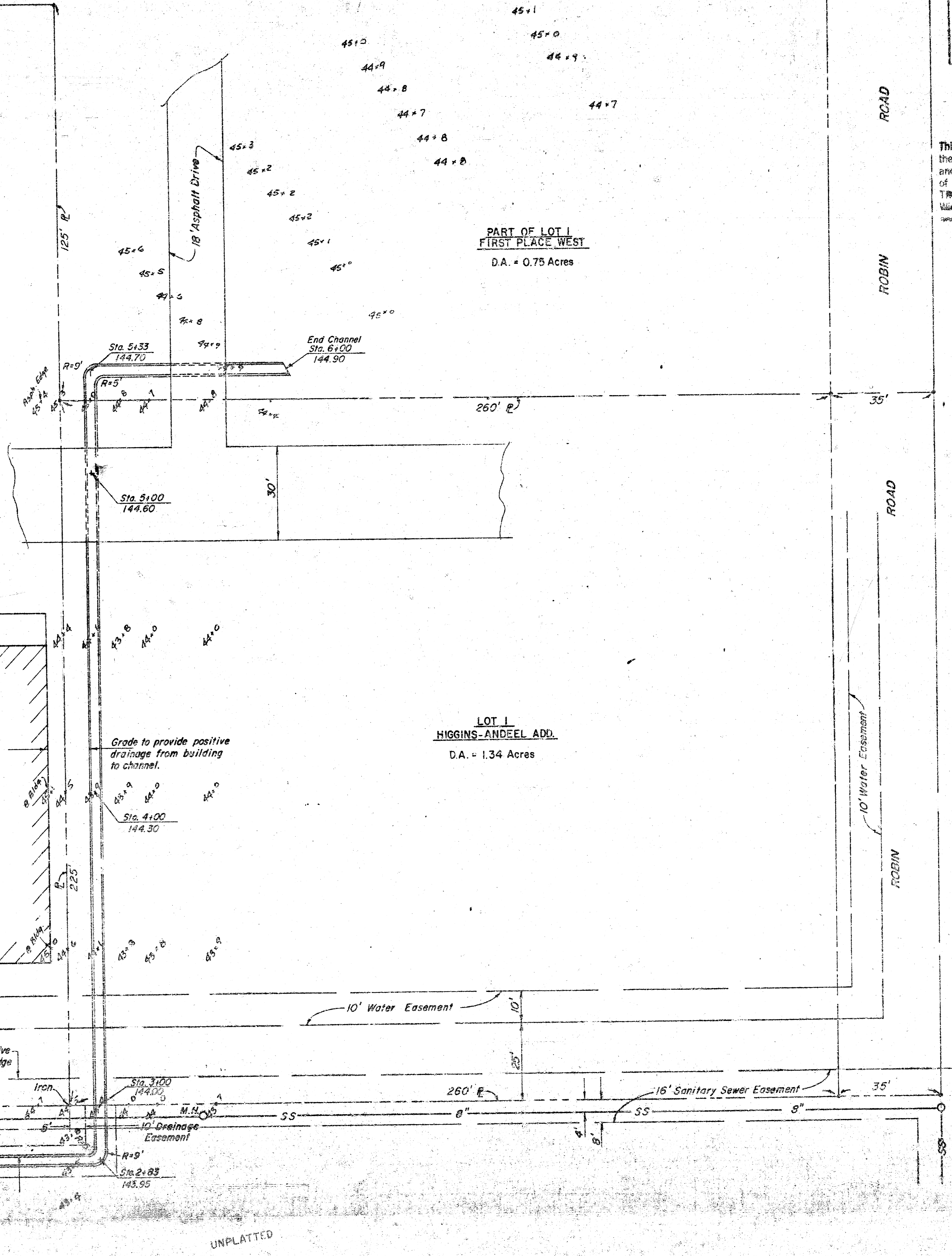
- NOTES:
1. Construct $3/4$ " Premoulded Asphaltic Expansion Joints @ 50' Intervals @ each change in alignment or section
 2. Remove Vegetation before Shaping Subgrade.
 3. Provide 3- $3/4$ " x 1/8" dowels, on 12" ctrs. at each expansion and construction joint

DRAINAGE STUDY
 FOR
 AREA NEAR CENTRAL AVE. & TYLER RD

Dr. G. M. Mohring
 MOHRING & ASSOCIATES CONSULTING ENGINEERS
 314 Brown Bldg. Wichita, Kansas
 July 1, 1974
 Revised August 28, 1974



DETAIL AT OUTLET
 1" = 4"



UNPLATTED

UNPLATTED