

STORM WATER SEWER TO SERVE 535 S. GREENWICH ROAD PART OF LOT 1, EAST KELLOGG ACRES 1311 PPS (607861) WICHITA, SEDGWICK COUNTY, KANSAS NEIL D. CABLE, P.E., CITY ENGINEER

GENERAL NOTES

1. Contractor will be required to provide notice to utility companies a minimum of twenty-four (24) hours prior to any excavation, as follows:

The Contractor must notify the following in case of an emergency:

- | | |
|---|---|
| Southwestern Bell Telephone Co.
154 N. Broadway
Wichita, Kansas 67202
Jim Toben
316-268-2245 | Wichita Water & Sewer Dept.
8th Floor, City Hall
455 N. Main St.
Wichita, Kansas 67202
Bill Perkins/Paul Bryant
316-268-4555 |
| Westar Energy
P.O. Box 208
Wichita, Kansas 67201
Jimmy Washington
316-261-6315 | Cox Communications
701 E. Douglas
Wichita, Kansas 67202
Brian Ring
316-262-4270 Ext 169 |
| Wichita Water & Sewer Dept.
8th Floor, City Hall
455 N. Main St.
Wichita, Kansas 67202
Bill Perkins
316-268-4555 | Kansas One Call
800-344-7233
Emergency 911 |
| Aquila Network
1611 S. Hoover
Wichita, Kansas 67209
Calvin Briggs
316-941-7233 | |

2. Contractor shall not start work on the project until the project inspector is assigned to the project and is present on the site. Any work done without inspection will be required to be uncovered for inspection.

3. Underground utility service lines and overhead utility pole lines are to be adjusted as necessary by others prior to construction, unless the plans specifically call for their locations, as shown on the plans, represent the best information obtainable for design. Location information has been obtained from the various utility companies and is either from company record drawings or company-provided field locations. The Contractor will be required to work around existing utilities within the right-of-way which do not conflict with proposed construction.

4. The contractor shall be responsible for preserving property irons. The Contractor will be required to re-establish any property irons which are damaged or destroyed by his construction operations. Such irons shall be re-established by a licensed land surveyor in accordance with state law.

5. All areas disturbed by construction operations shall be seeded with rye grass at a rate of 300 lbs/acre immediately following construction in that area. Ground shall be prepared per City of Wichita specifications prior to seeding.

6. Contractor shall verify the location of all utilities prior to beginning construction.

7. Contractor shall implement Best Management Practices in accordance with city regulations.

8. Contractor to provide all staking, testing, and inspection necessary to complete the work.

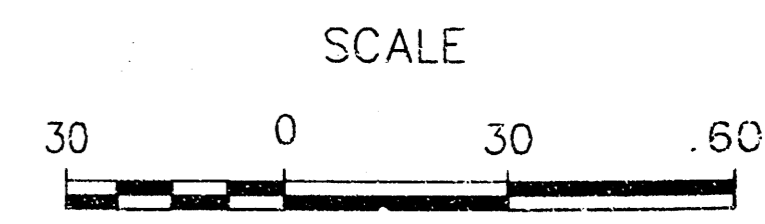
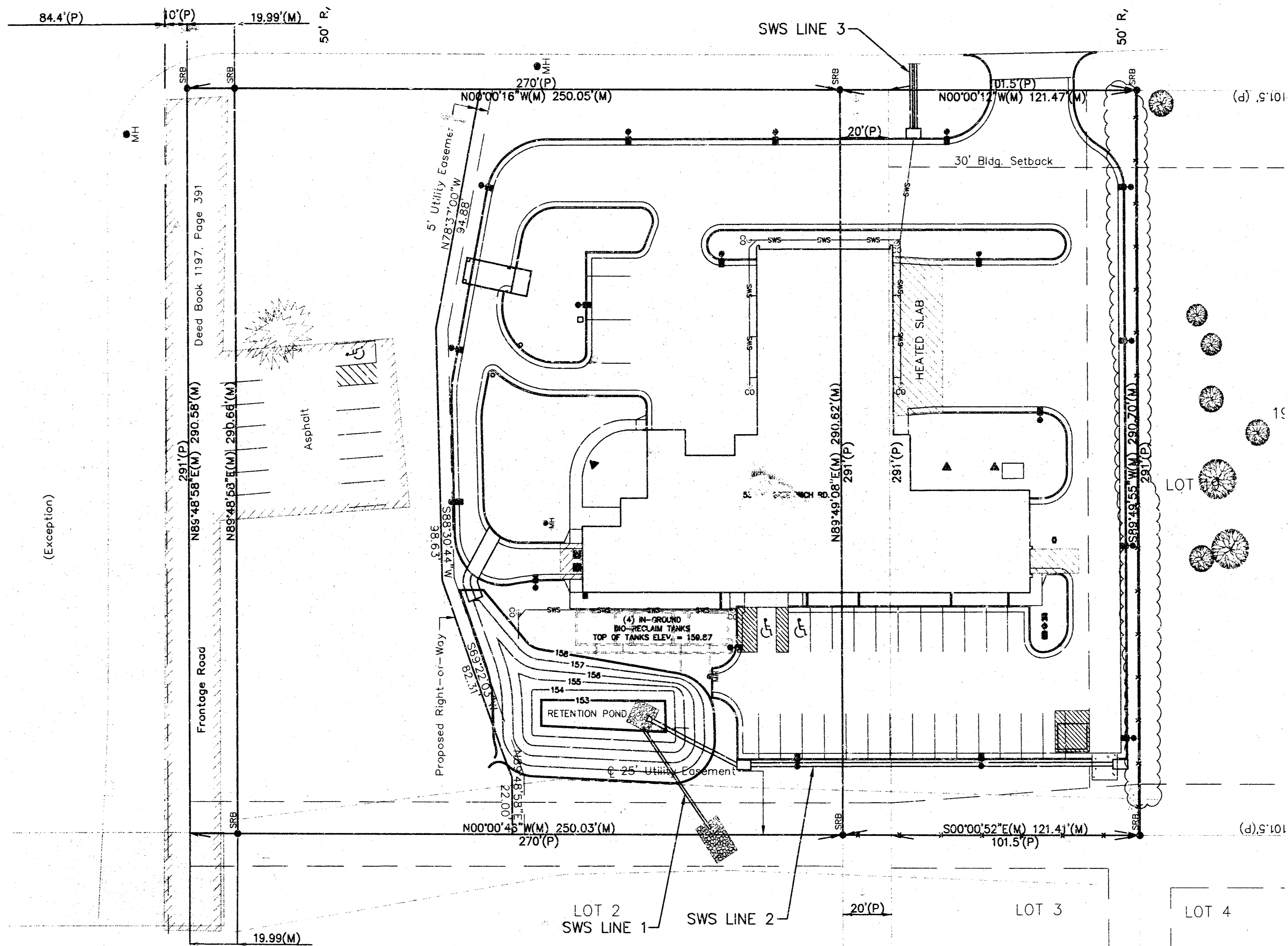
9. Pipe shall be Contech Ultra Flo or approved equal.

APPROVED AS NOTED BY CITY ENGINEER OF WICHITA

STORM SEWERS VRH 11/19/03

NOTE TO CONTRACTORS

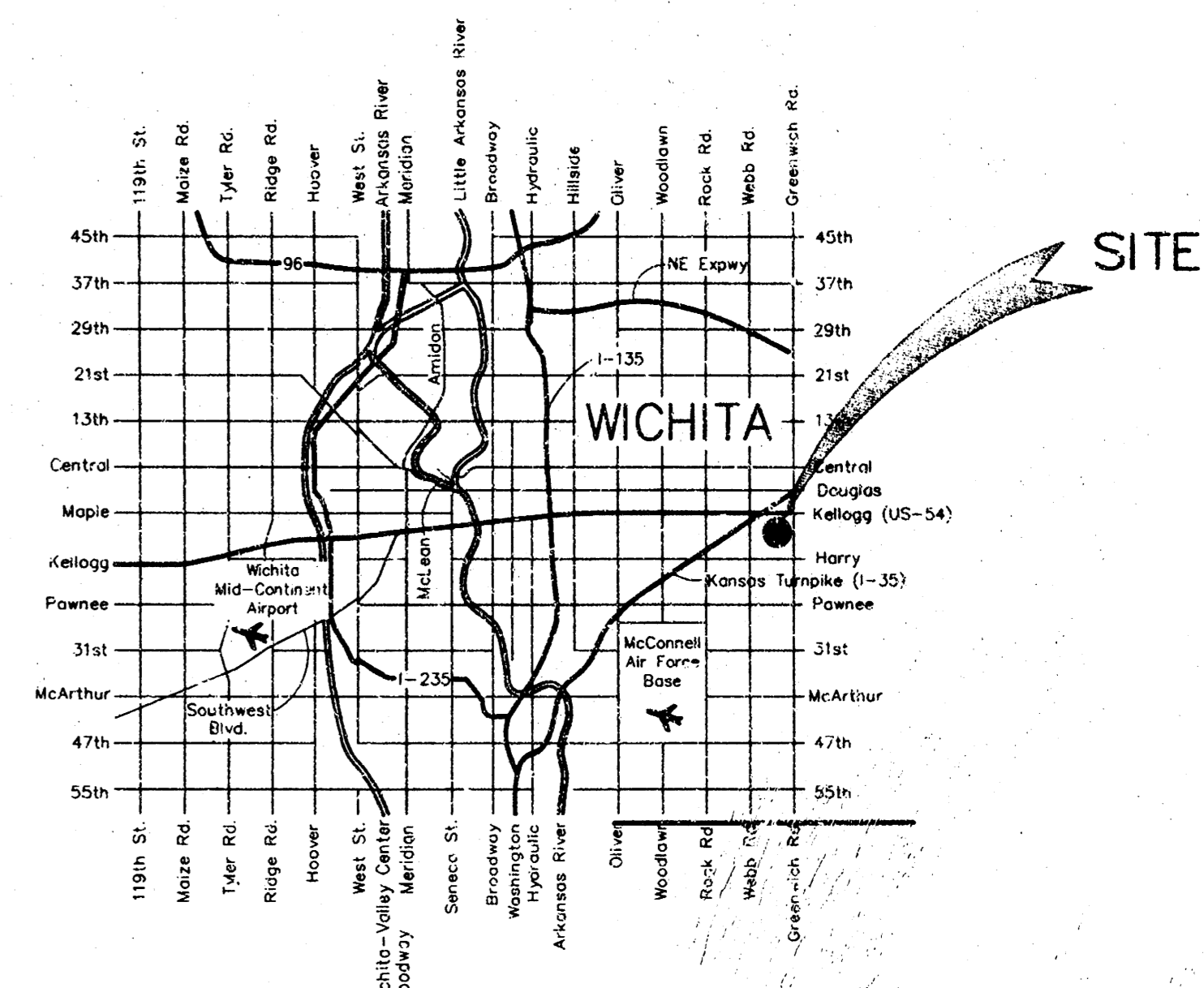
Inspection and testing for this project are to be provided by a Licensed Consulting Engineering Firm under contract with the Owner/Developer. Said inspection is to be in accordance with the City of Wichita standard construction engineering practices and certified by a Licensed Professional Engineer. No work shall be performed in dedicated easements or public right-of-way by the Contractor without such inspection nor shall work be commenced without written authorization by the City Engineer. All construction and materials shall comply with the City of Wichita Specifications and Standards (on file and available in the City Engineer's Office).

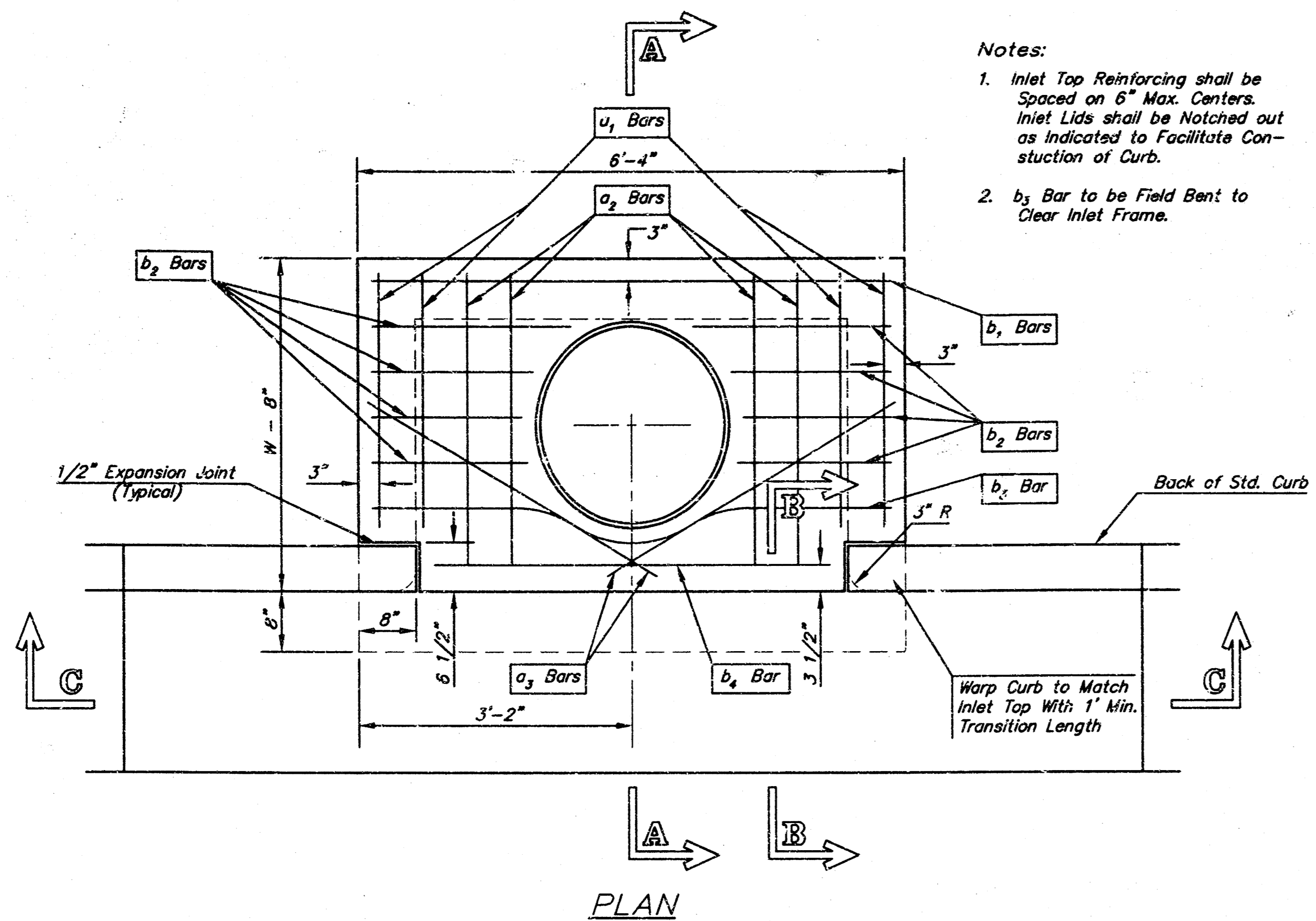


SHEET INDEX

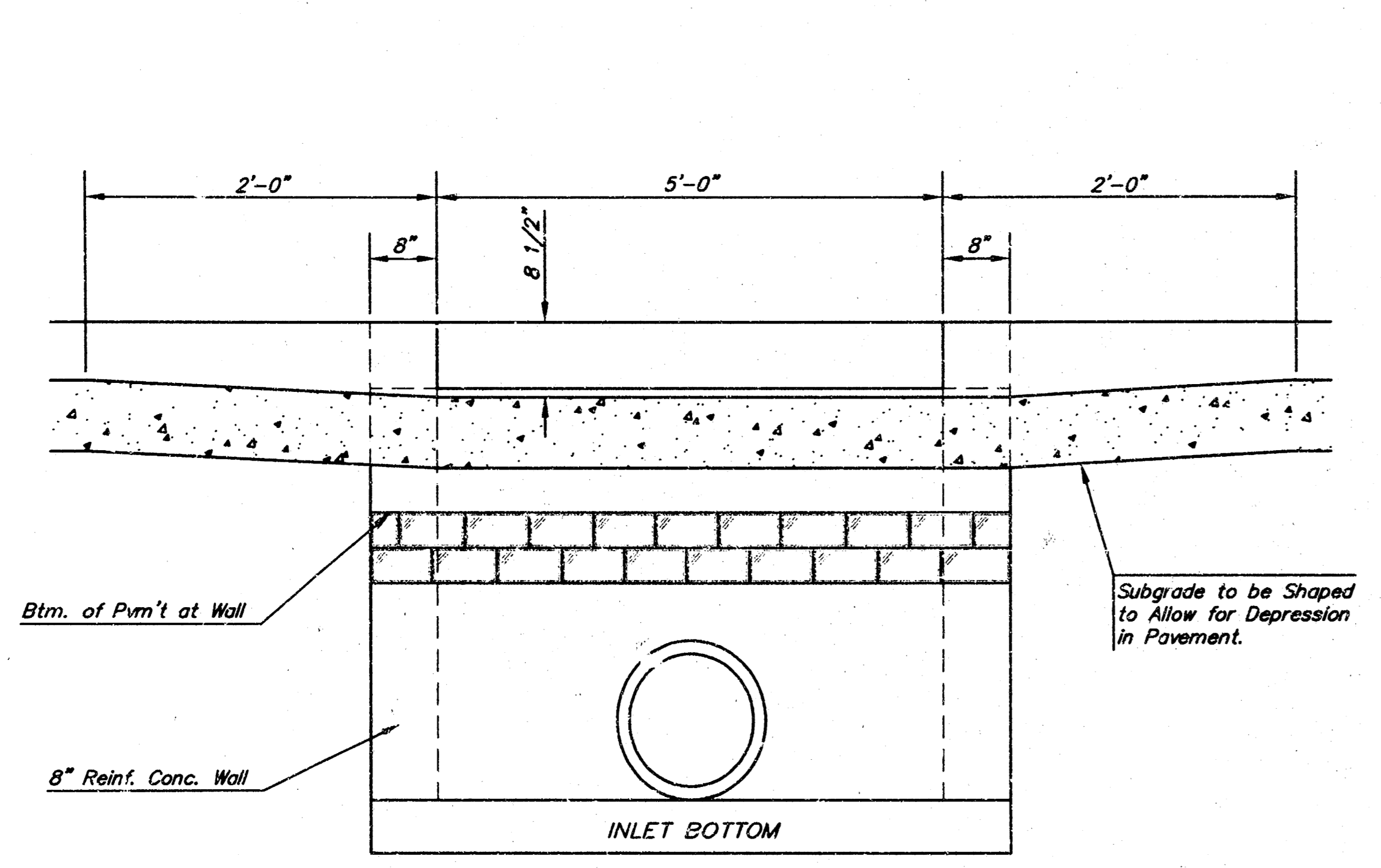
1. Title Sheet
2. Standard C.O.W. Type 1 Curb Inlet
3. Plan & Profile Line 1
4. Plan & Profile Line 2
5. Plan & Profile Line 3

BENCHMARK
Section corner at Kellogg and Greenwich
Elev. 164.78 city datum

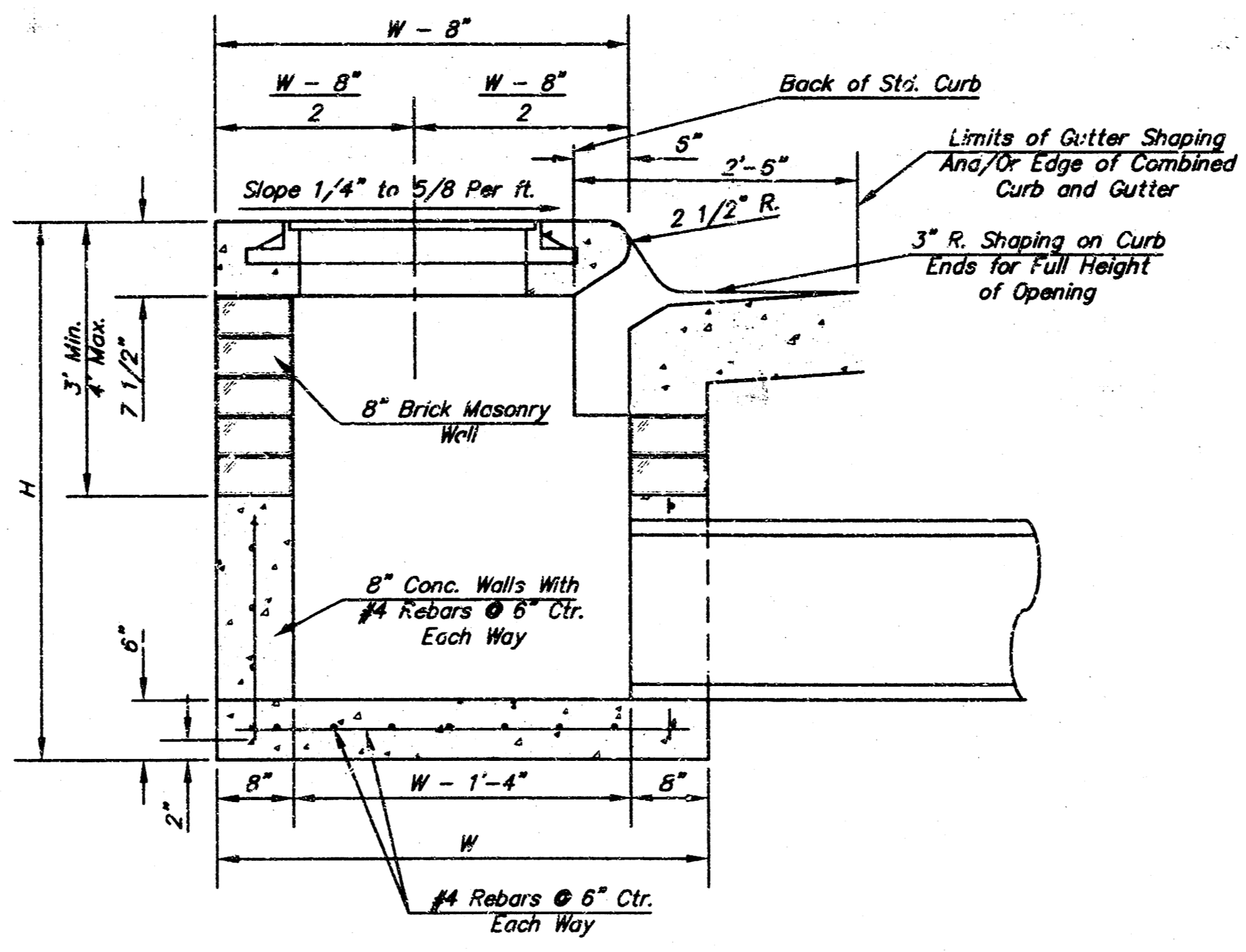




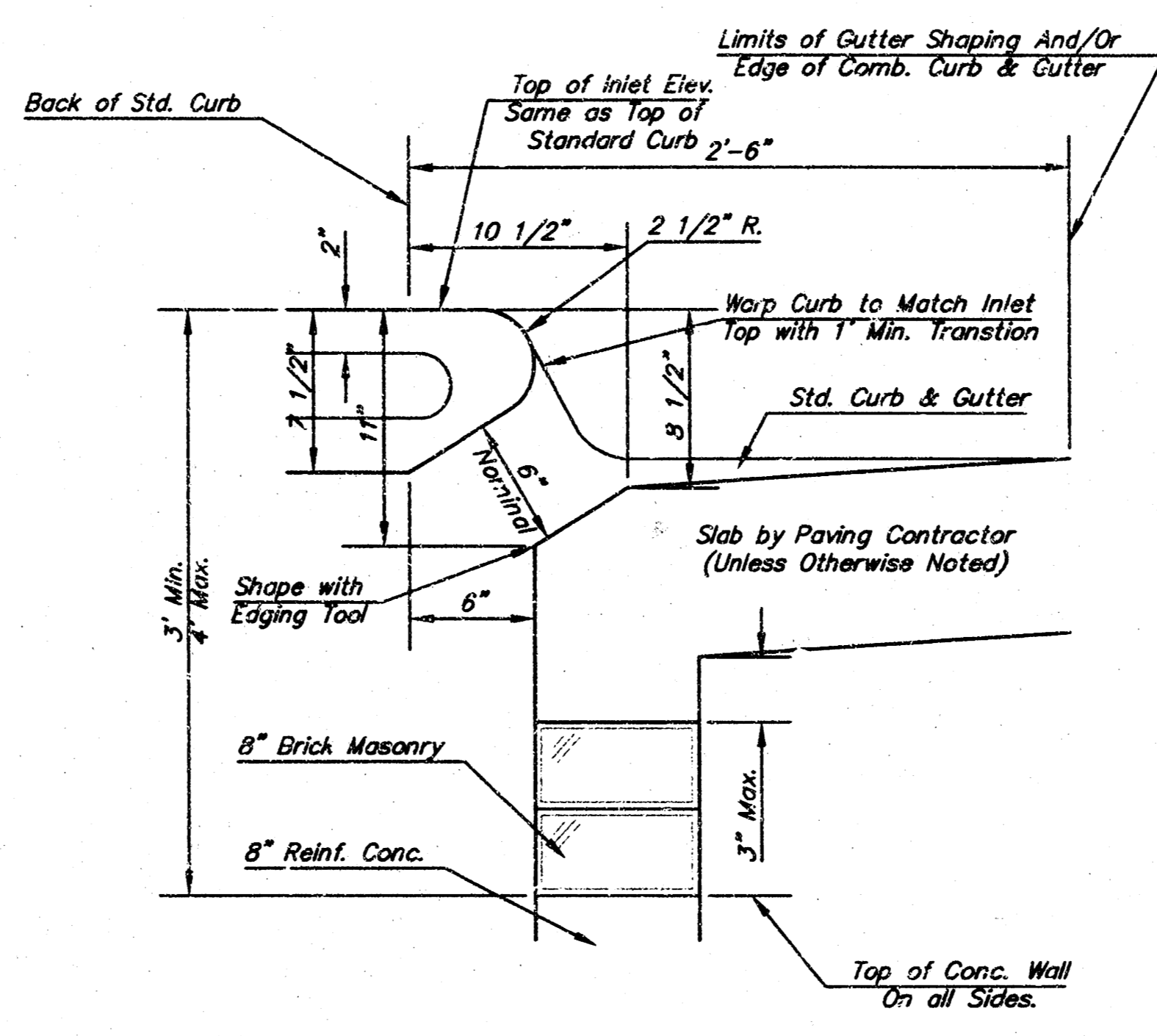
Notes:
 1. Inlet Top Reinforcing shall be Spaced on 6" Max. Centers. Inlet Lids shall be Notched out as Indicated to Facilitate Construction of Curb.
 2. b₃ Bar to be Field Bent to Clear Inlet Frame.



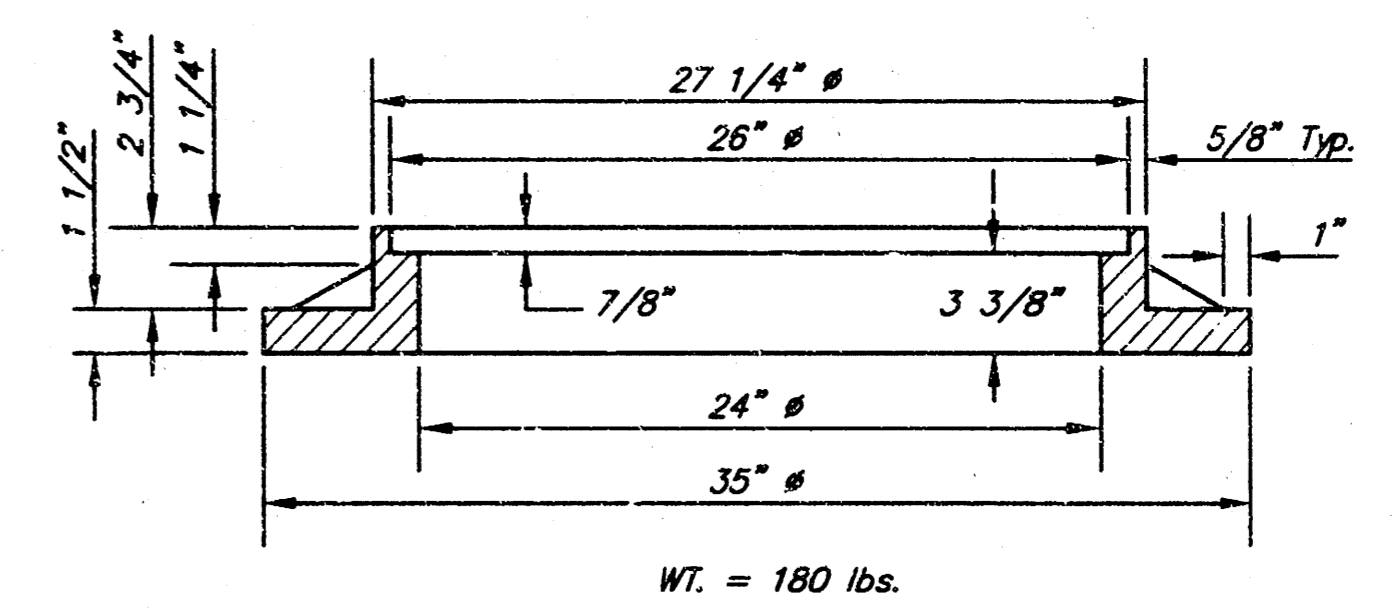
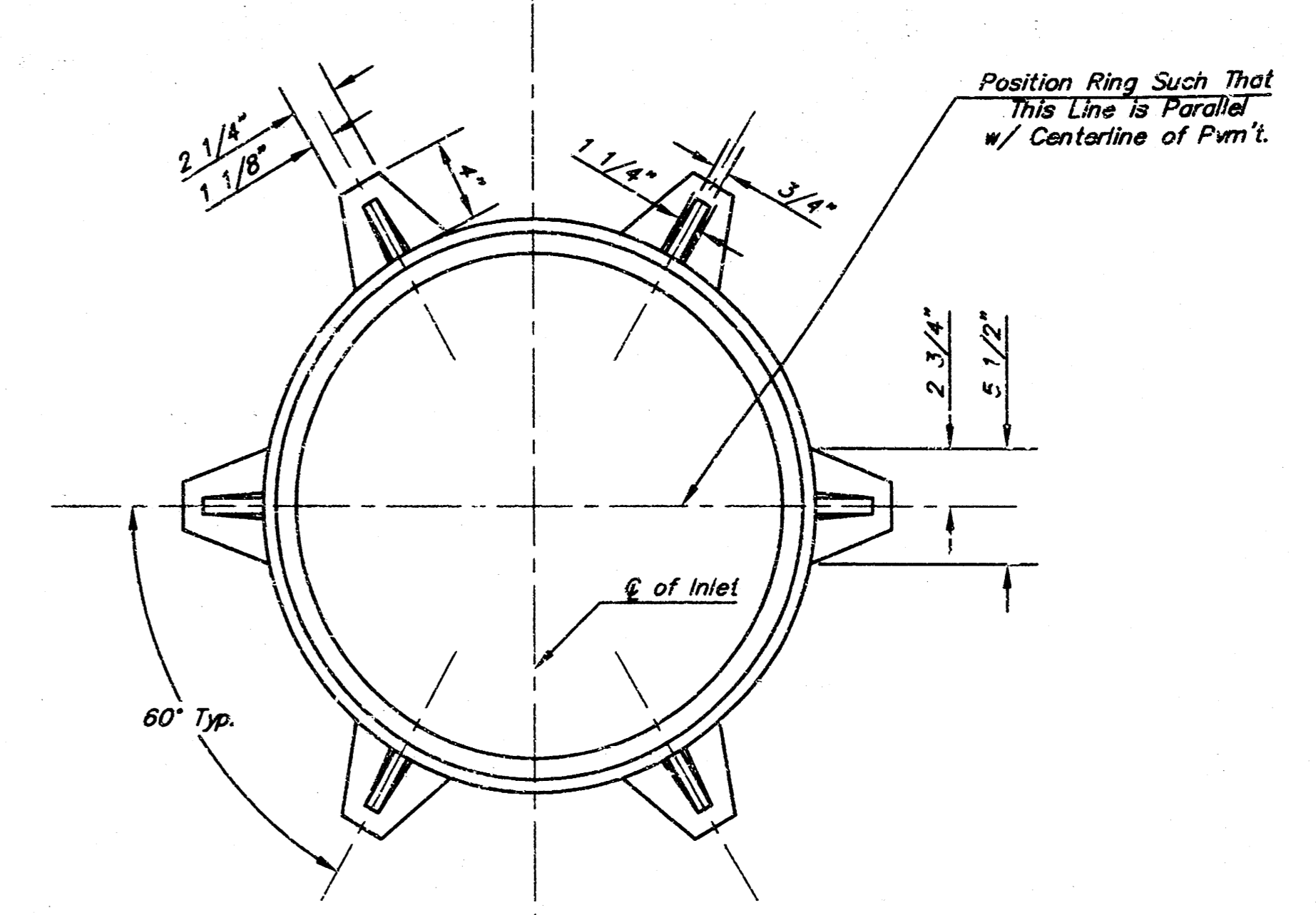
SECTION C-C



SECTION A-A

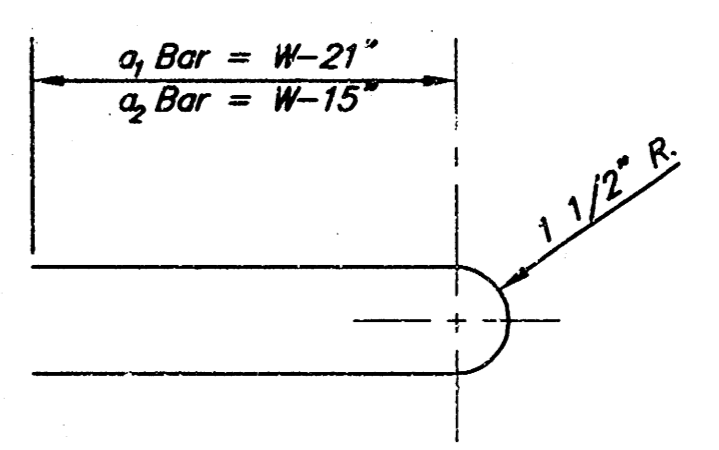


SECTION B-B



MANHOLE RING AND COVER

*See City of Wichita Standard Manhole Ring and Cover Detail Sheet for Cover Details to Be Used With Inlet Frame.



BENDING DIAGRAM

STEEL SCHEDULE

BAR NUMBER	a ₁	a ₂	a ₃	b ₁				b ₂	b ₃	b ₄	Wt. Lbs.	
				#1-4"	#5-4"	#6-4"	#7-4"					#8-4"
SIZE	#4	#4	#4	#4	#4	#4	#4	#4	#4	#6		
LENGTH	W=4'-4"	5'-7"	6'-7"	4'-0"	6'-1"	-	-	-	1'-9"	6'-2"	4'-8"	60±
	W=5'-4"	7'-7"	8'-7"	5'-0"	6'-1"	-	-	-	1'-9"	6'-2"	4'-8"	81±
	W=6'-4"	9'-7"	10'-7"	6'-0"	6'-1"	-	-	-	1'-9"	6'-2"	4'-8"	101±
	W=7'-4"	11'-7"	12'-7"	7'-0"	6'-1"	-	-	-	1'-9"	6'-2"	4'-8"	121±
	W=8'-4"	13'-7"	14'-7"	8'-0"	6'-1"	-	-	-	1'-9"	6'-2"	4'-8"	141±

Note: a₂ Bars to be Placed Approx. 2" Below Top of Inlet Cover.

STANDARD CURB INLET PRECAST TOPS

W	PRE-CAST TOP SIZE	PIPE SIZE	CU. YD. CONC.
4'-4"	3'-8" 6'-4" 7 1/2"	21" & SMALLER	0.38±
5'-4"	4'-8" 6'-4" 7 1/2"	24" & 30"	0.51±
6'-4"	5'-8" 6'-4" 7 1/2"	36" & 42"	0.64±
7'-4"	6'-8" 6'-4" 7 1/2"	48" & 54"	0.77±
8'-4"	7'-8" 6'-4" 7 1/2"	60" & 66"	0.90±

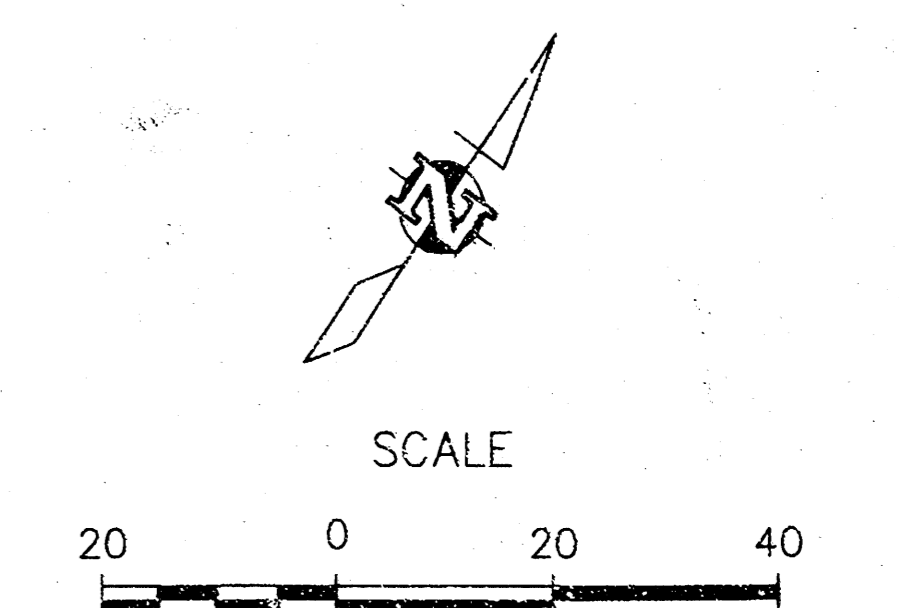
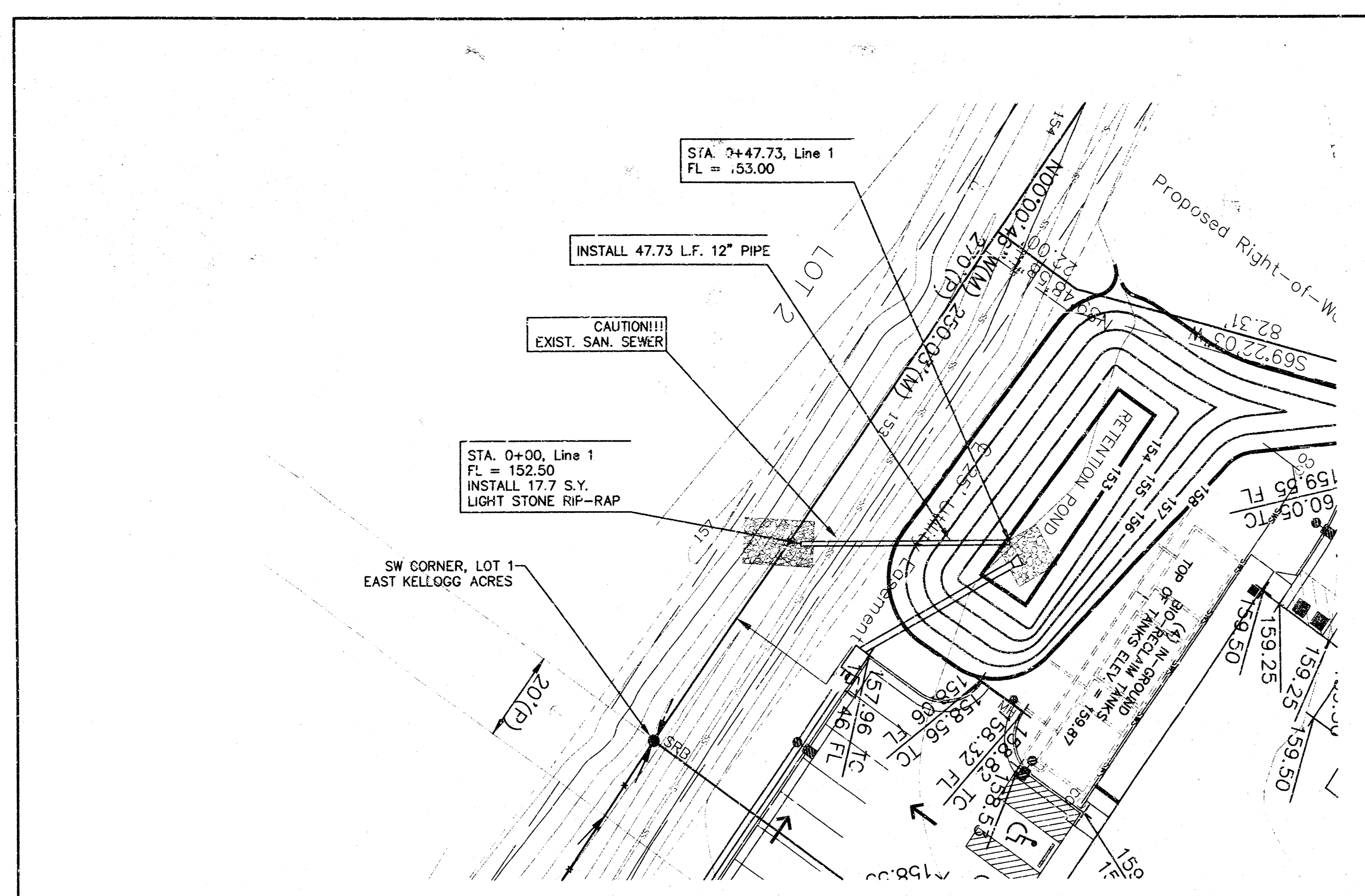
GENERAL NOTES

- Concrete tops to be installed on thin mortar cushion to insure full support along brick walls. Concrete tops may be cast in place or precast. Concrete used for inlet construction shall be concrete pavement mix.
- Contractor shall have the option of constructing 8" brick masonry walls between the concrete inlet base and top on this inlet when W=6'-4" and H=7'-0" or less.
- Inlet invert shall be shaped with 8 sack sand mix concrete to create flow channels and to increase hydraulic efficiency such that the inlet will be self cleaning between all inlet and/or outlet pipes.
- The ends of all pipes installed in inlets shall be cut off flush with the inside face of the inlet wall.

THE CITY OF WICHITA
 STANDARD TYPE 1 CURB INLET
 OPENING = 6" x 5'-0"
 NEIL D. CABLE, P.E. - CITY ENGINEER
 PROJECT NUMBER XXX-XXXXX INDEX CODE XXXXXX
 DATE MAR 96 SHEET X OF X

PROJECT NUMBER 1311 FPS (607861)
 AM NO. 02/22-02
 DATE 11/19/03
 SCALE N.T.S.
 GREEN LANTERN CAR WASH
 TYPE 1 CURB INLET
 535 S. GREENWICH RD., WICHITA, KANSAS
 SHEET 2 OF 5

I:\02-cow-type-1-curb-inlet.dwg Mod Nov 19 08:46:41 2003 Aaron E. - aear@wvna.com

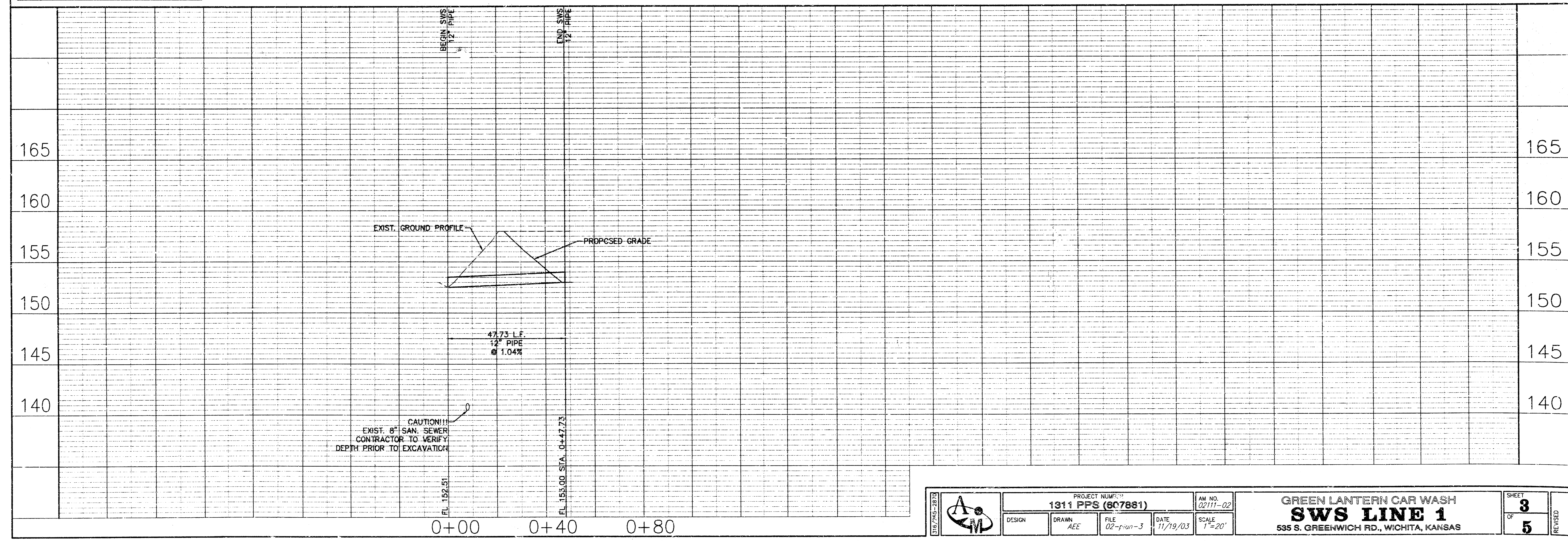


LEGEND

- = 1/2" Rebar with Baughman cap (found)
- (M) = Measured
- BPED = Bell Pedestal
- = Concrete
- ⊙ = Fire Hydrant
- ⊙ = Light Pole
- = Manhole
- = Sanitary Sewer
- ⊙ = Sprinkler Head
- = Underground Telephone
- = Water
- MW = Monitoring Well

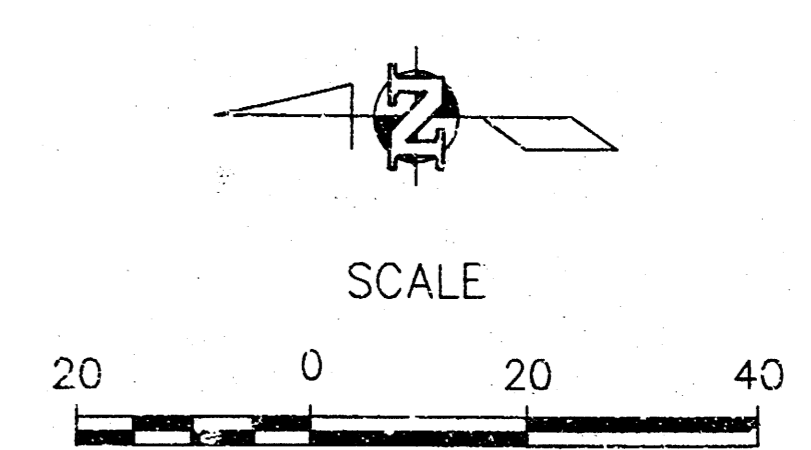
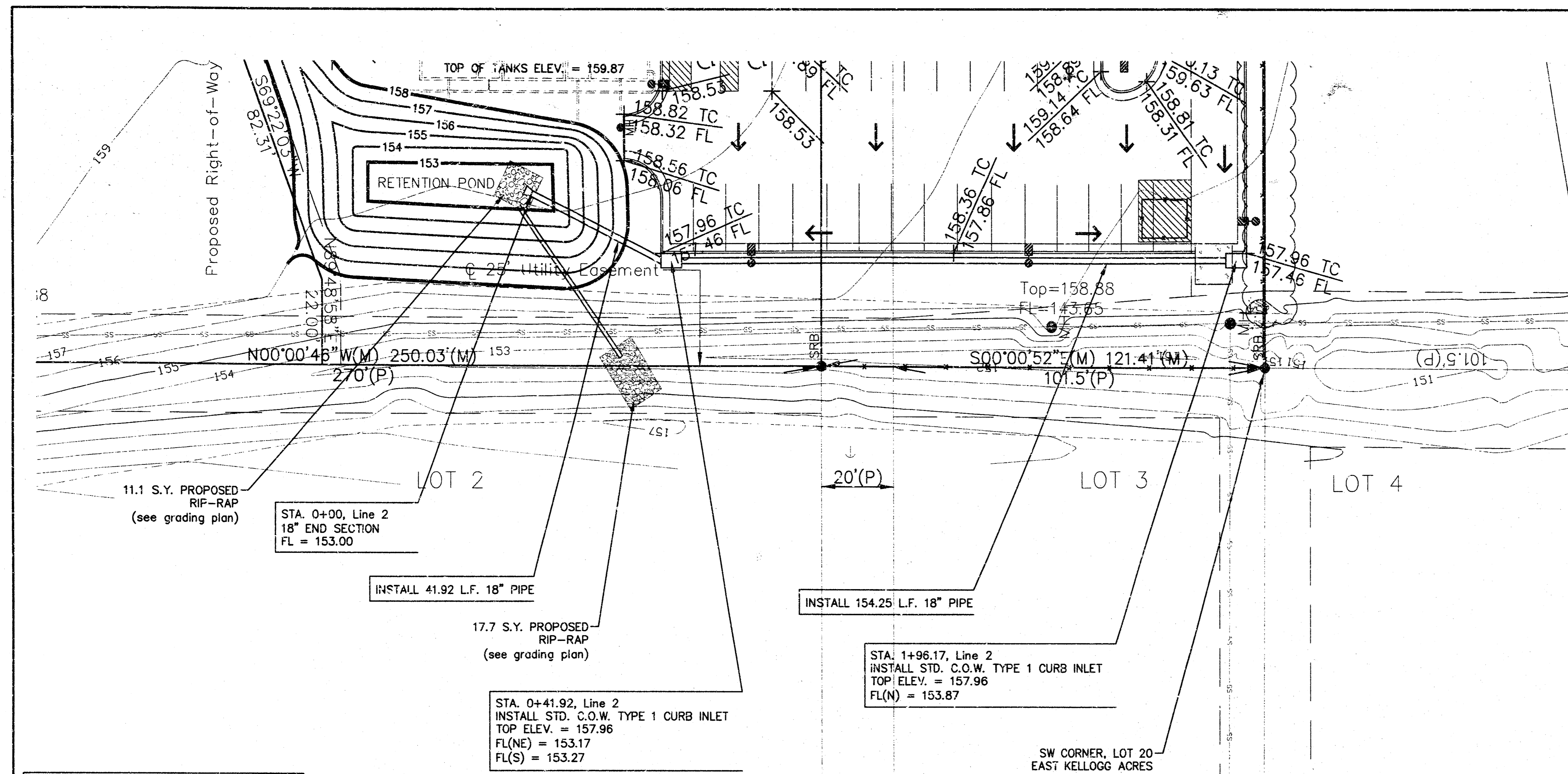
BENCHMARK
Section Corner at
Kellogg & Greenwich
Elev. 164.78 City Datum

NOTE: EXISTING LOCATION AND DEPTH OF SWS TO BE VERIFIED BY CONTRACTOR.



	PROJECT NUMBER 1311 PPS (607881)				PLAN NO. 0211-02
	DESIGN	DRAWN AEE	FILE 02-1-01-3	DATE 11/19/03	SCALE 1"=20'
GREEN LANTERN CAR WASH SWS LINE 1 535 S. GREENWICH RD., WICHITA, KANSAS					SHEET 3 OF 5

plan-3.dwg Wed Nov 19 09:48:38 2003 Aaron E. - ae@greenlanternconsulting.com

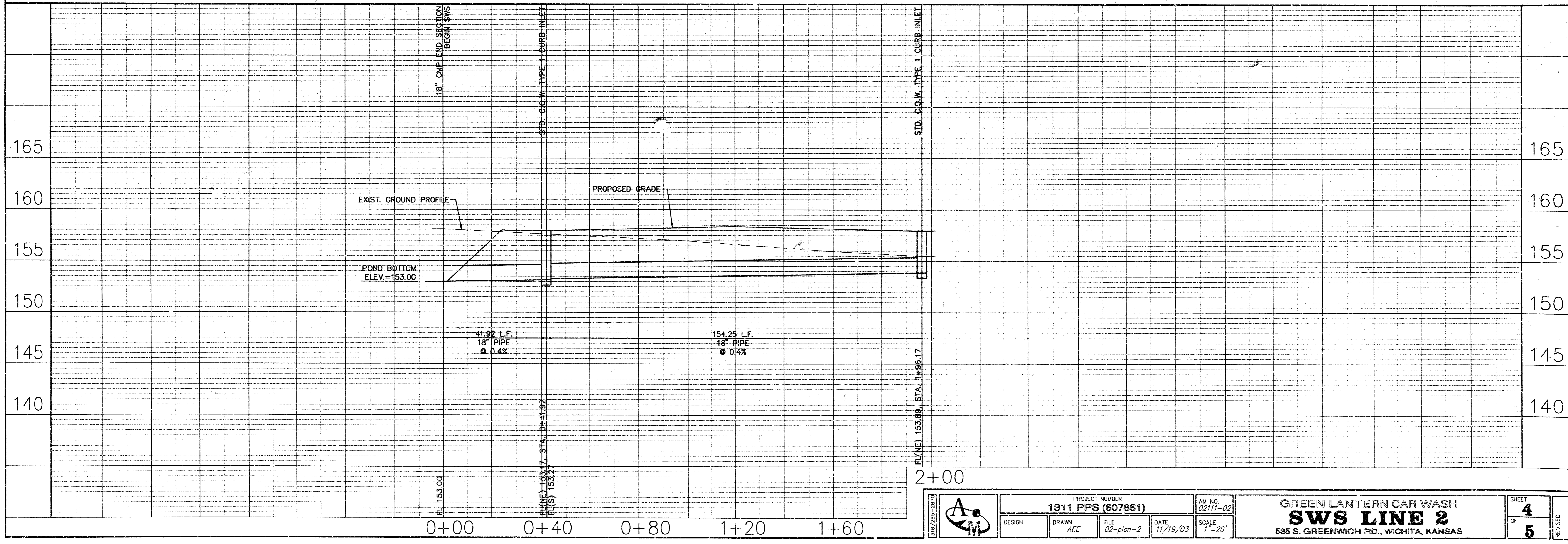


LEGEND

- (M) = Measured
- (P) = Plotted
- SRB = 1/2" Rebar with SRB cap (found)
- = Existing Contour Elevation
- = Gas
- PP = Power Pole
- = Water
- = Guy Anchor
- ⊙ = Proposed Light
- = Drainage Arrow
- 159.67 TC / 159.17 FL + = Proposed Spot Grade
- = Sanitary Sewer
- MH = Manhole
- 154--- = Proposed Contour

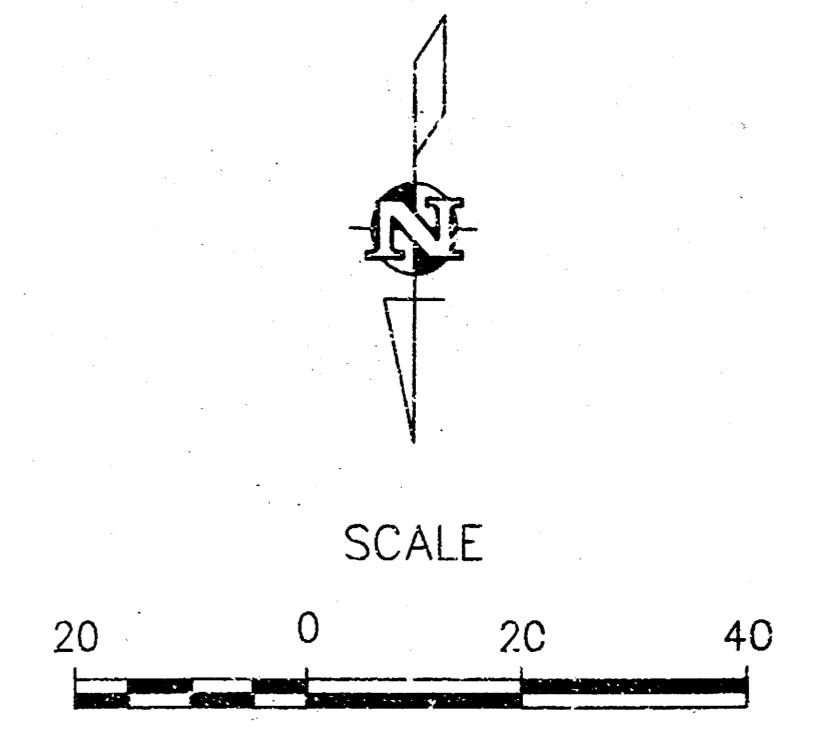
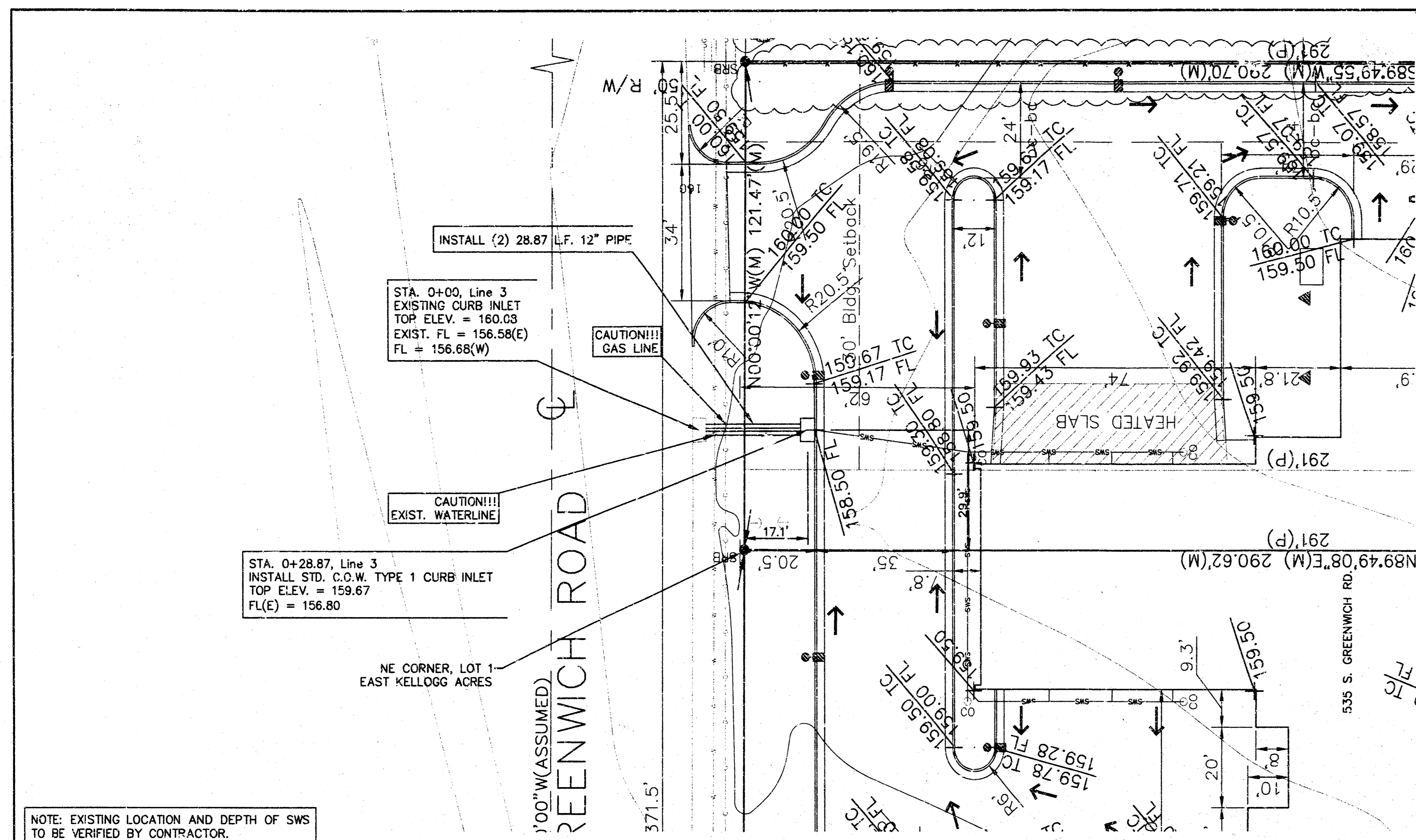
BENCHMARK
Section Corner at
Kellogg & Greenwic.
Elev. 164.78 City Datum

NOTE: EXISTING LOCATION AND DEPTH OF SWS TO BE VERIFIED BY CONTRACTOR.



	PROJECT NUMBER 1311 PPS (607861)		AM NO. 02111-02	GREEN LANTERN CAR WASH SWS LINE 2 535 S. GREENWICH RD., WICHITA, KANSAS	SHEET 4 OF 5
	DESIGN	DRAWN AEE	FILE 02-plan-2		

02-plan-2.dwg, Wed Nov 19 09:50:08 2003 Aaron E. - aaron.levy@kellogg.com

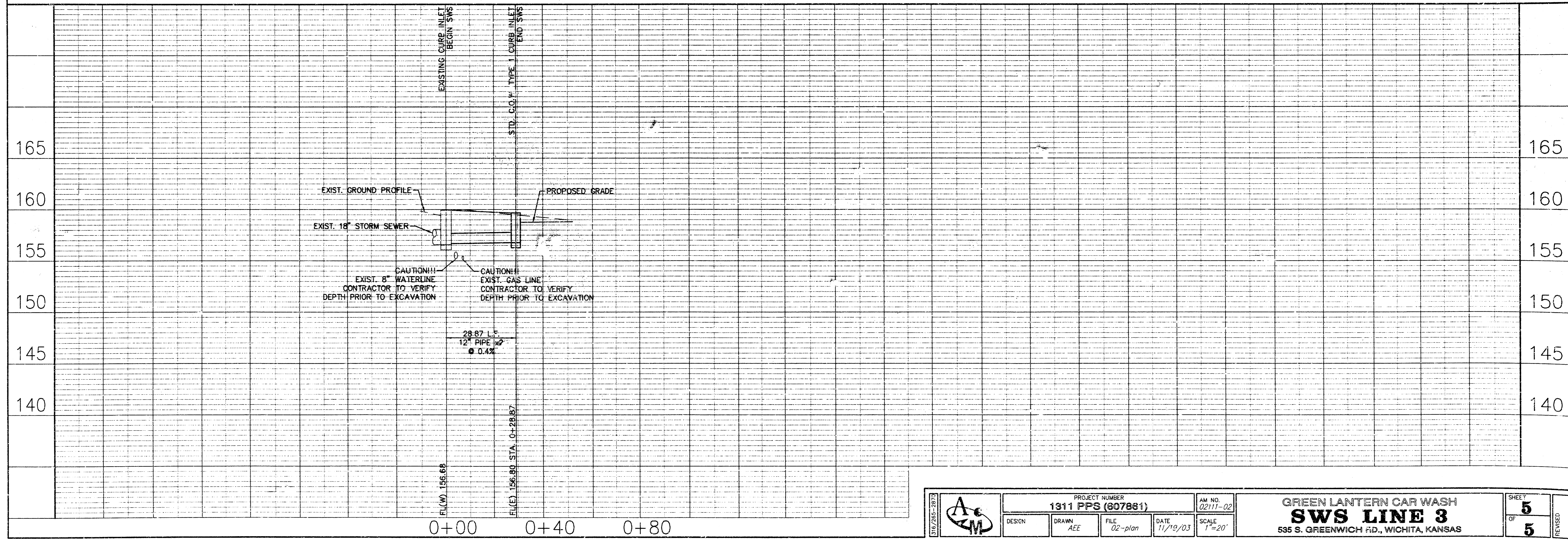


LEGEND

- (M) = Measured
- (P) = Platted
- SRB = 1/2" Rebar with SRB cap (found)
- 155 = Existing Contour Elevation
- = Gas
- PP = Power Pole
- = Water
- = Guy Anchor
- = Proposed Light
- = Drainage Arrow
- 159.67 TC / 159.17 FL = Proposed Spot Grade

BENCHMARK
Section Corner at
Kellogg & Greenwich
Fav. 164.78 City Datum

NOTE: EXISTING LOCATION AND DEPTH OF SWS TO BE VERIFIED BY CONTRACTOR.



	PROJECT NUMBER 1311 PPS (807881)				AM NO. 02111-02
	DESIGN	DRAWN AEE	FILE 02-plan	DATE 11/19/03	SCALE 1"=20'
GREEN LANTERN CAR WASH SWS LINE 3 535 S. GREENWICH RD., WICHITA, KANSAS					SHEET 5 OF 5 REVISIONS

1-02-plun.dwg Wed Nov 19 09:51:59 2003 Aaron E. - aaron@greenlanternconsulting.com

at 10 40 01