

PRIVATE STORM SEWER LOTS 5 THRU 11, BLOCK 2 BEVERLY MANOR, SEDGWICK COUNTY, KANSAS 1318 PPS (607861)

GENERAL NOTES

Contractor will be required to provide a minimum advance notice of twenty-four (24) hours to utility companies prior to starting any excavation as follows:

Kansas One-Call 687-2470

The Contractor must notify the following in case of an emergency:

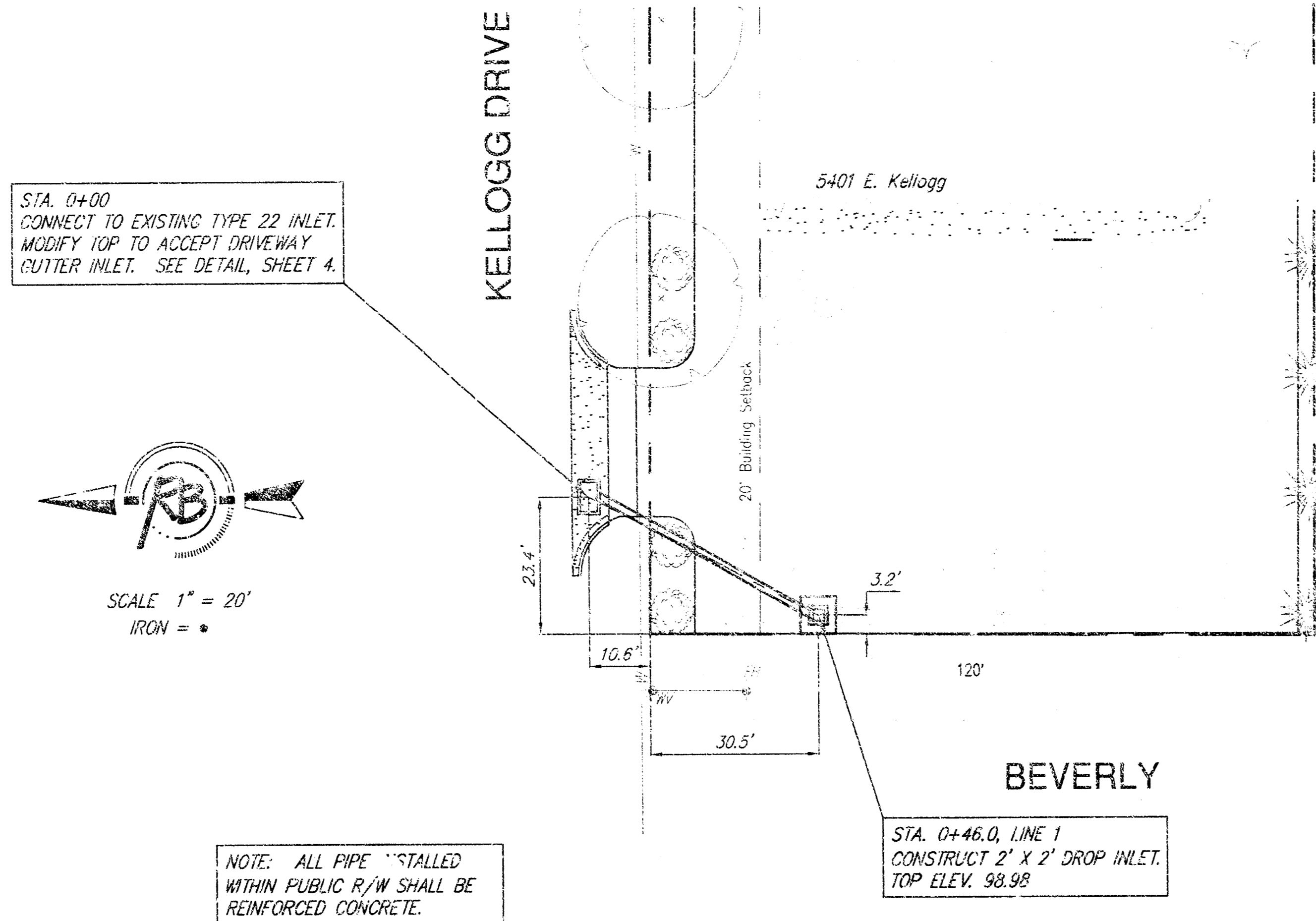
Cox Communications	262-0671
Kansas Gas Service	383-8600
K.G.E. Electric	383-8600
Peoples Natural Gas Company	1-800-303-0307
Southwestern Bell Telephone Company	1-800-295-8313
City of Wichita Water Department	262-6000
City of Wichita Sewer Maintenance	262-6000
Williams Pipeline - Terry Blasing	529-6622

Underground utility service lines and overhead utility pole lines are to be adjusted as necessary by others prior to construction unless the plans specifically call for their adjustment by the Contractor or unless the plans specifically identify a Utility to be adjusted by its owner during construction. Existing utilities and their location, as shown on the plans, represent the best information available for design. Location information has been obtained from the various utility companies and is either from company record drawings or company-provided field locations. The Contractor will be required to work around existing utilities within the right-of-way which do not conflict with proposed construction.

Rubble from the removal of structure and excess excavation which is to be wasted shall be disposed of by the Contractor.

The Contractor shall notify pipeline companies at least 24 hours in advance of any work being performed across and/or adjacent to pipelines.

The Contractor shall give all property owners and/or tenants of developed property directly abutting the construction of this project a minimum of ten (10) days advance notice prior to start of construction.



APPROVED AS NOTED
BY CITY ENGINEER OF WICHITA

Sanitary Sewers _____
Storm Sewers URH 2/12/03
Driveway Approaches _____
Water Mains _____
Paving _____

NOTE TO CONTRACTORS

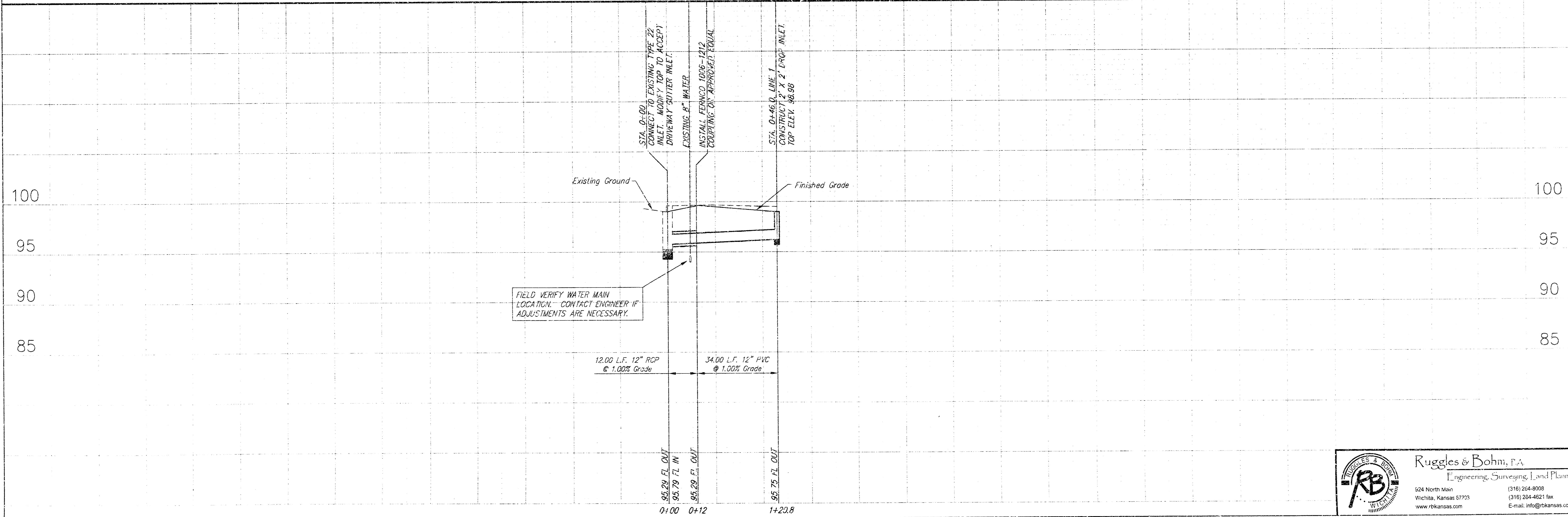
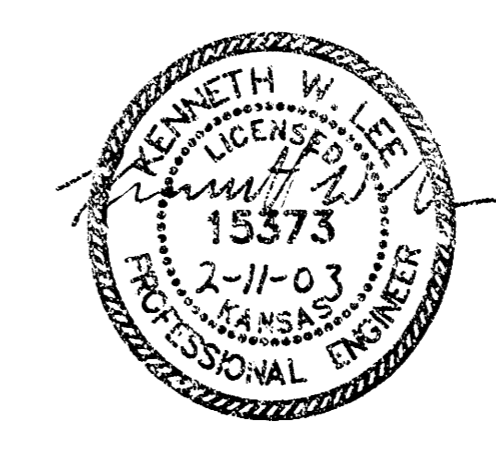
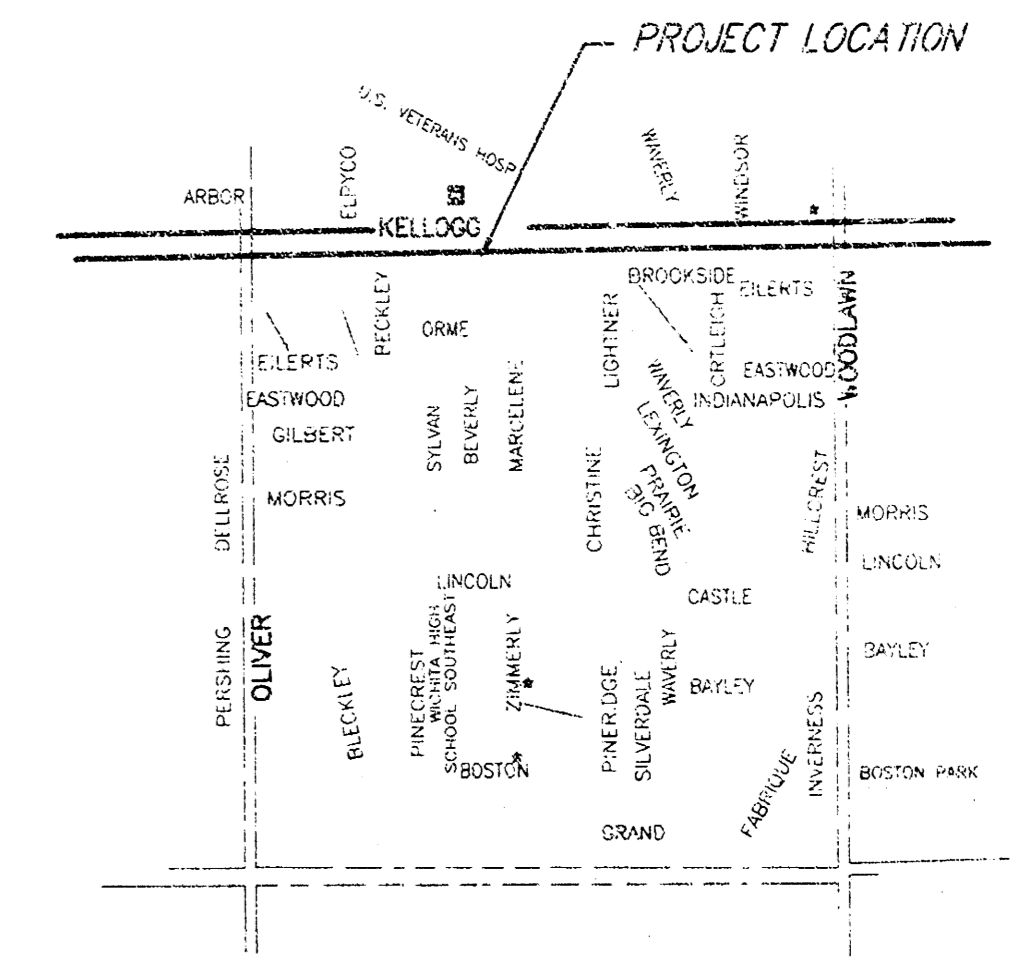
Inspection and testing for this project are to be provided by a Licensed Consulting Engineering Firm under contract with the Owner/Developer. Said inspection to be in accordance with the City of Wichita standard construction engineering practices and certified by a Licensed Professional Engineer. No work shall be performed in dedicated easements or public right-of-way by the Contractor without such inspection, nor shall any work be commenced without written authorization by the City Engineer.

INDEX

1. SWS PLAN/PROFILE
2. INLET MODIFICATION DETAILS
3. DROP INLET DETAILS

DRAINAGE CALCULATIONS

D.A. = 0.21 acres
Cs = 0.85
C₁₀₀ = 0.95
i_s = 4.36 in/hr
i₁₀ = 7.37 in/hr
Q_s = 0.80 cfs
Q₁₀ = 1.5 cfs
Use 12" at 1.00% Grade



PROJECT NUMBER PPC	DRAWN KWL	CHECKED KWL	DATE Feb. 10, 2003	REVISION REV. #
PROJECT NAME BASE PLAN	Lots 5-11, Block 2, Beverly Manor SWS FLAN WICHITA, KANSAS			

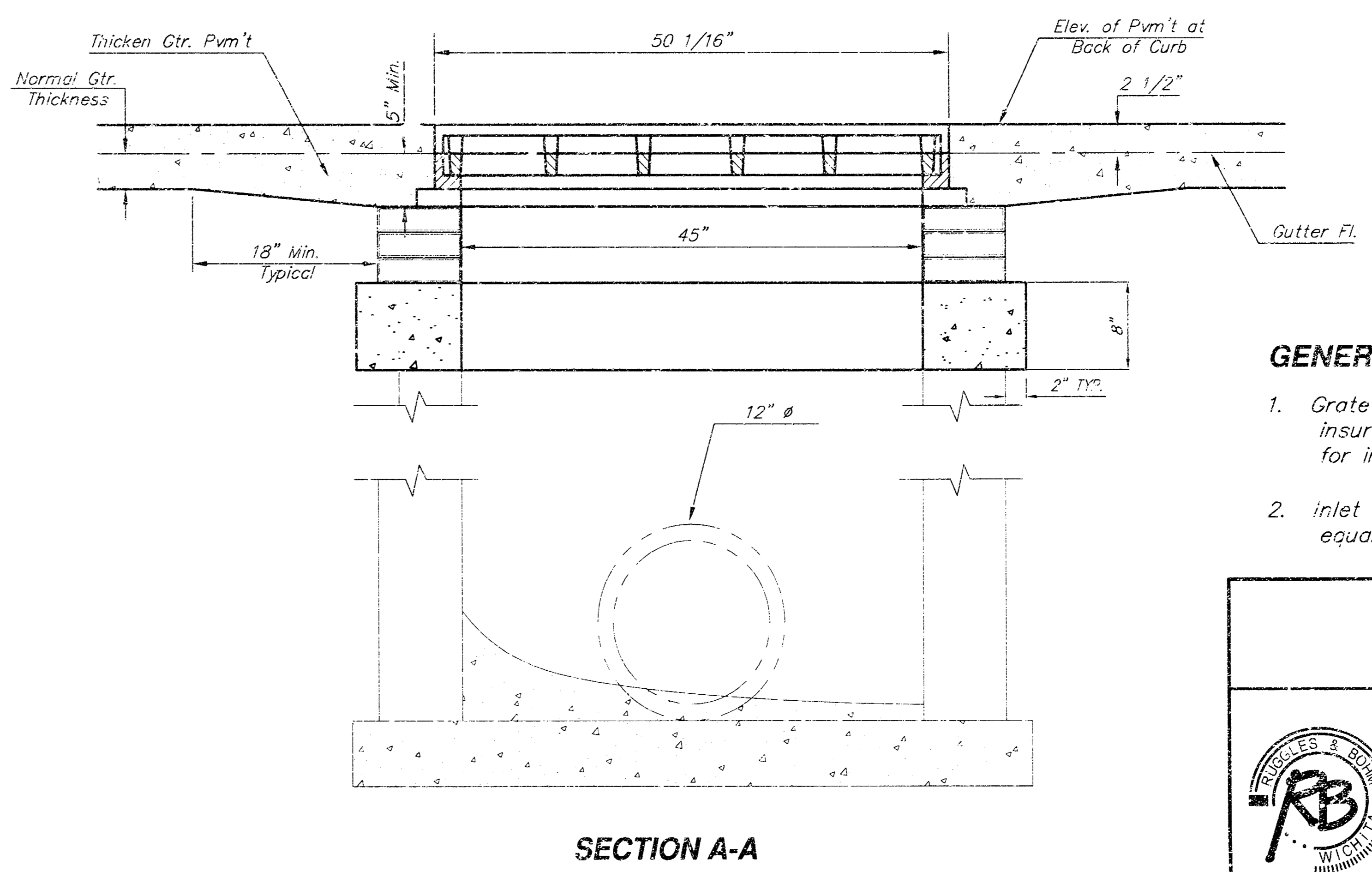
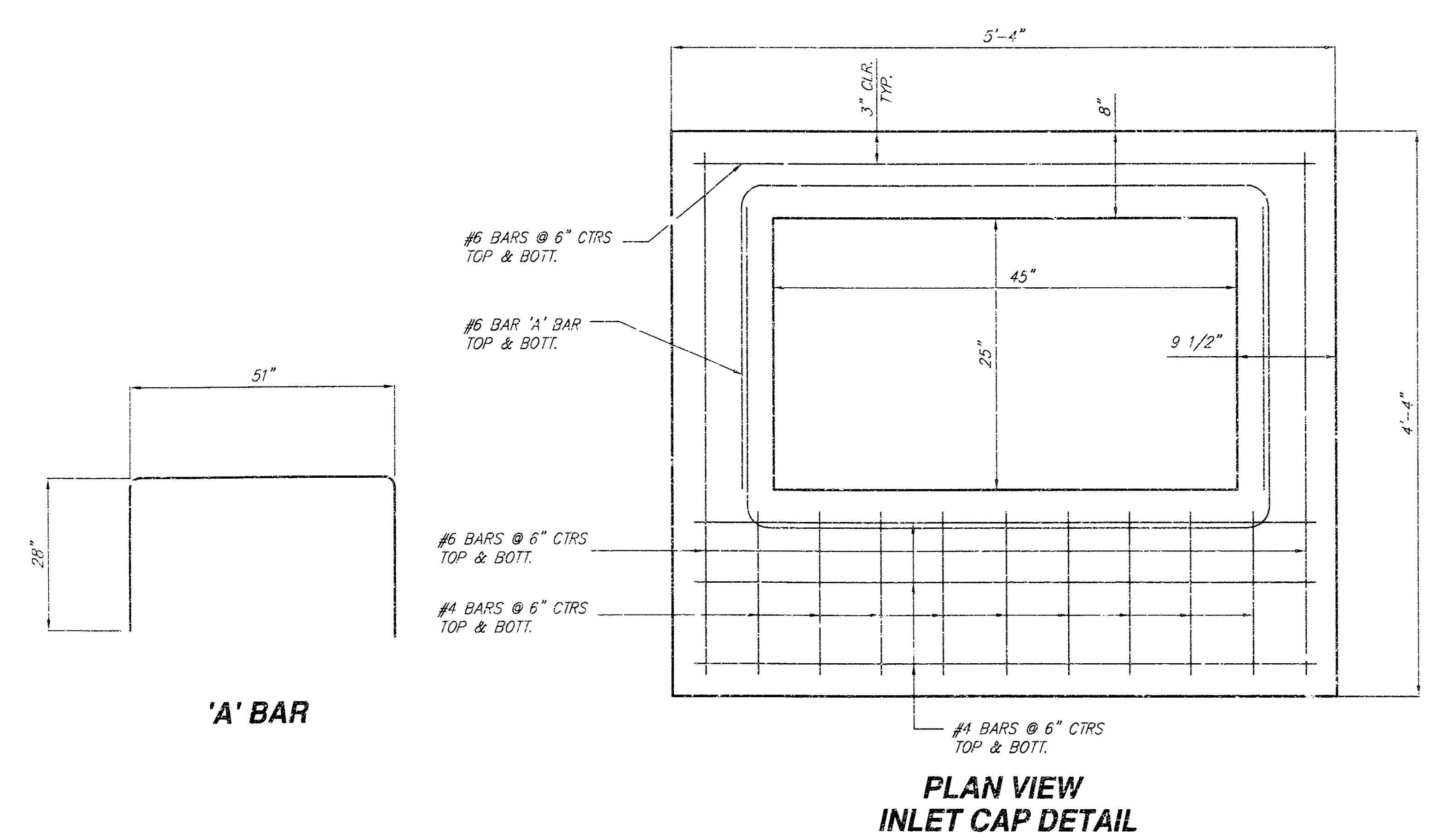
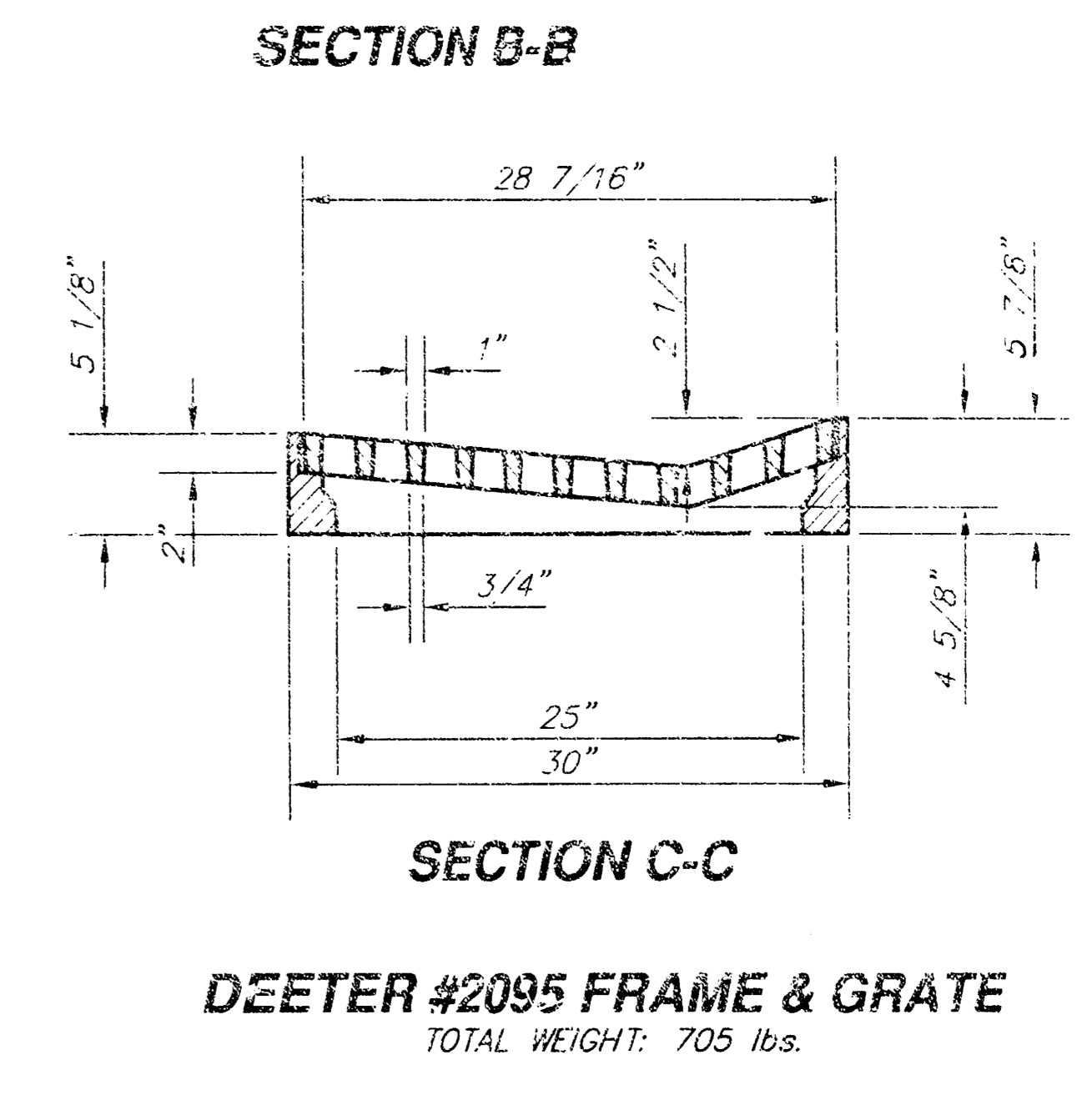
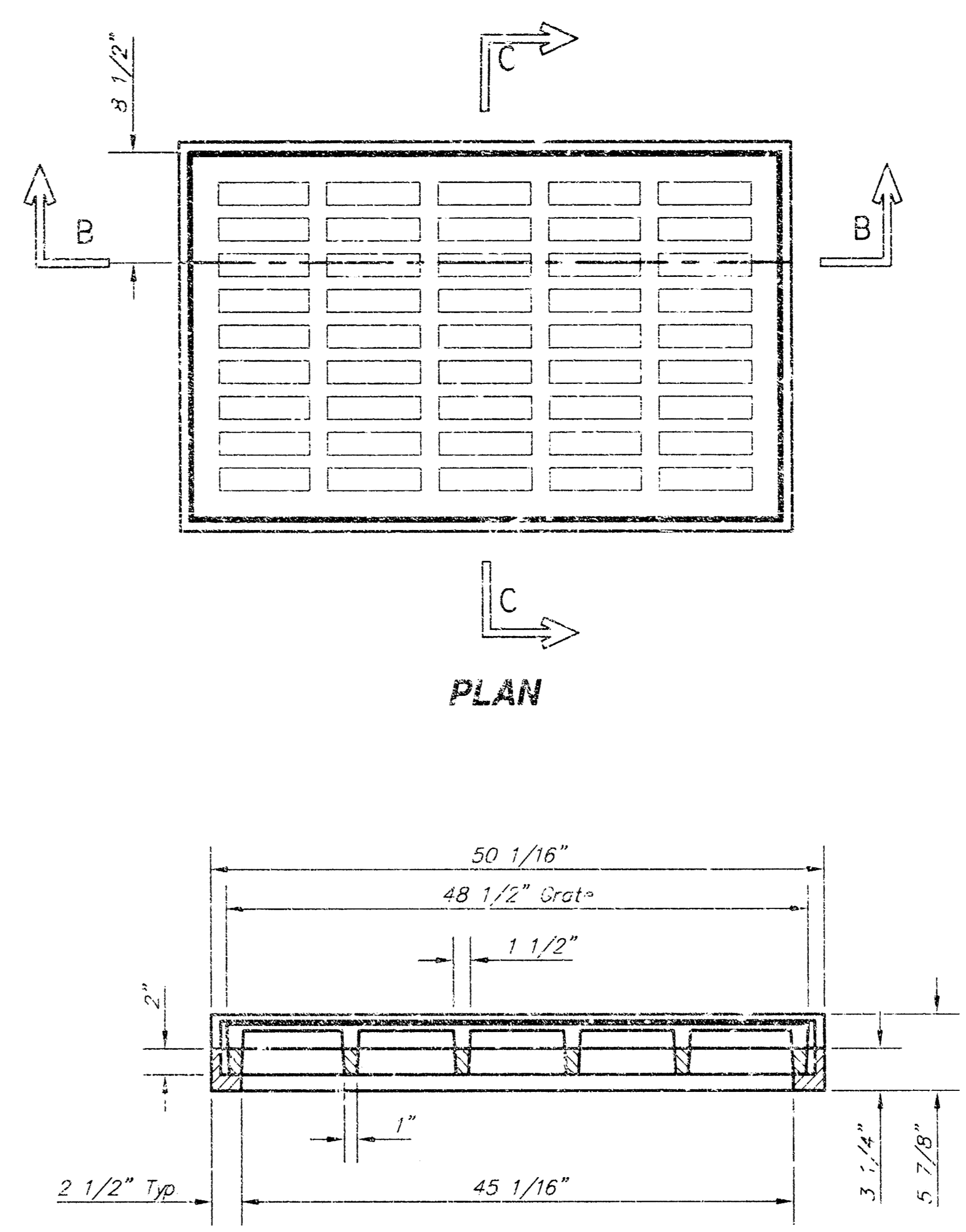
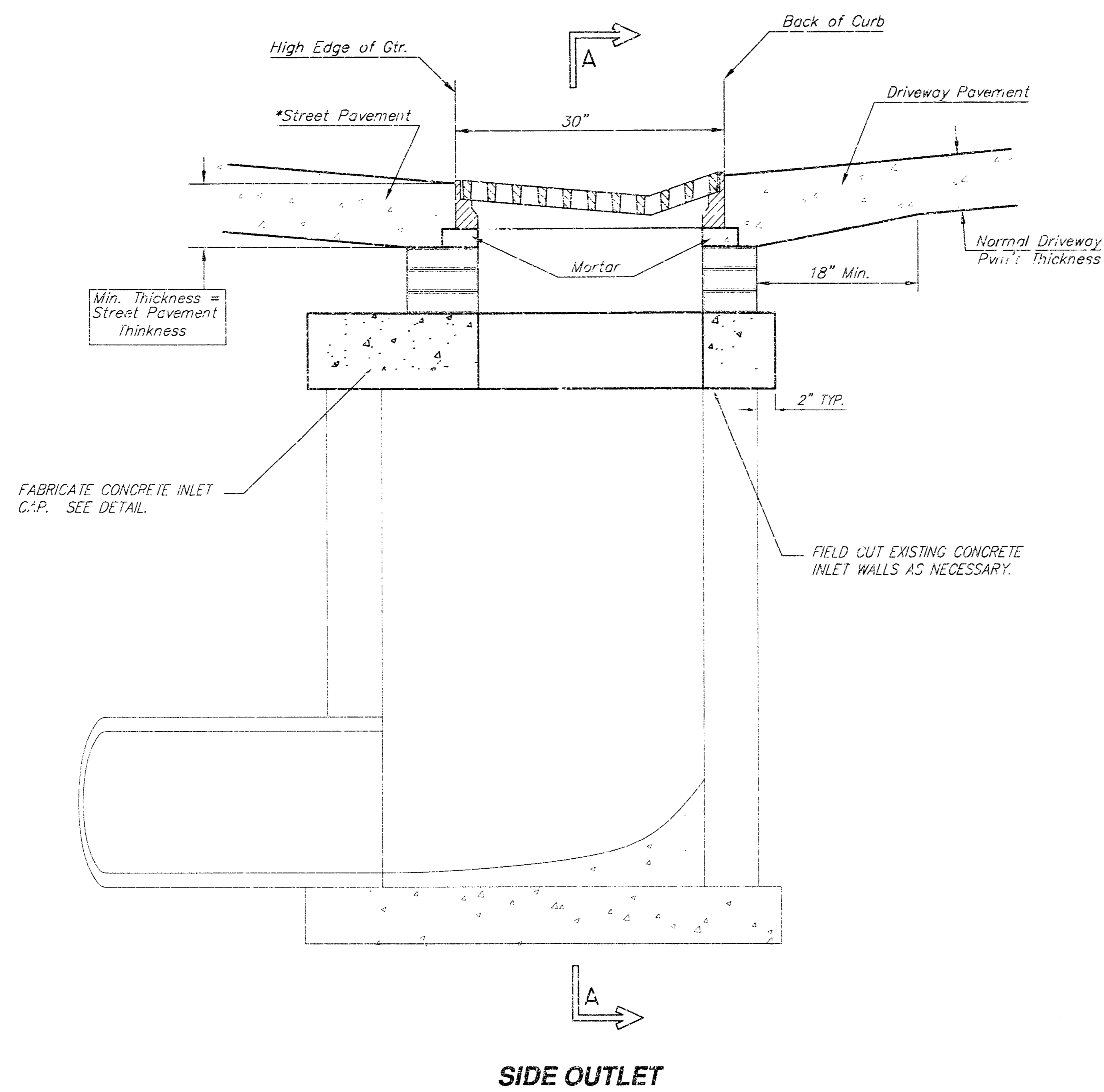
Ruggles & Bohm, P.A.
Engineering, Surveying, Land Planning

524 North Main
Wichita, Kansas 67203
www.rbkansas.com

(316) 264-8008
(316) 264-4621 fax
E-mail: info@rbkansas.com

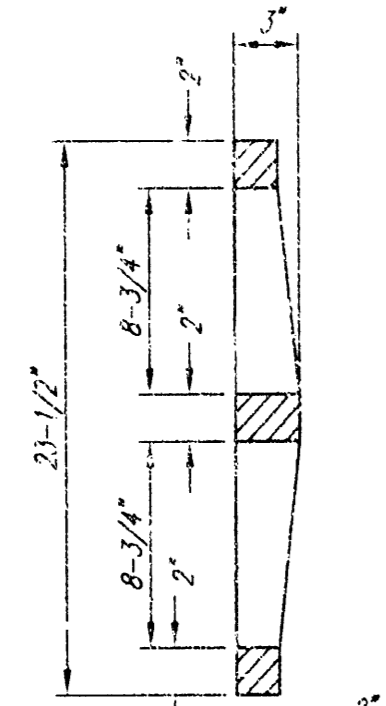
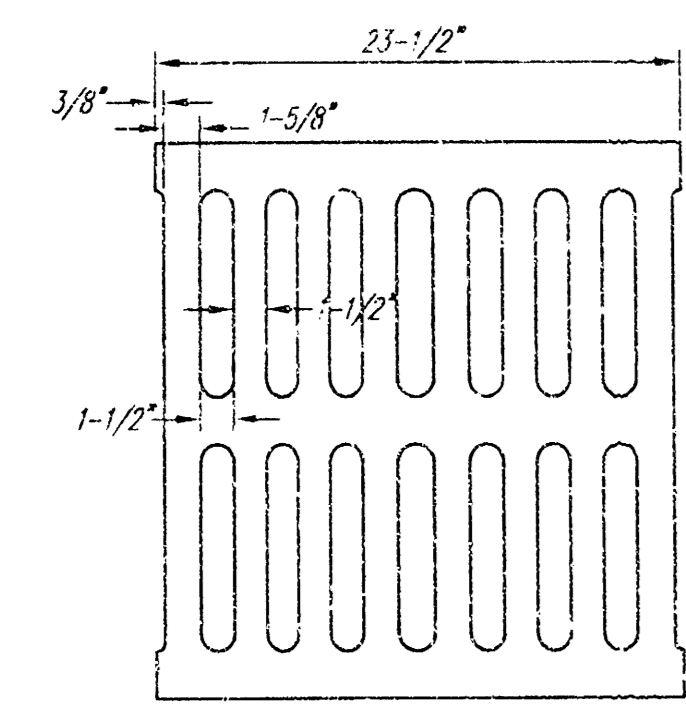
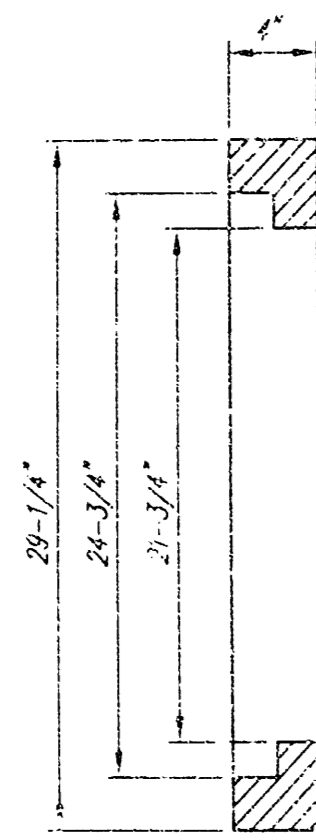
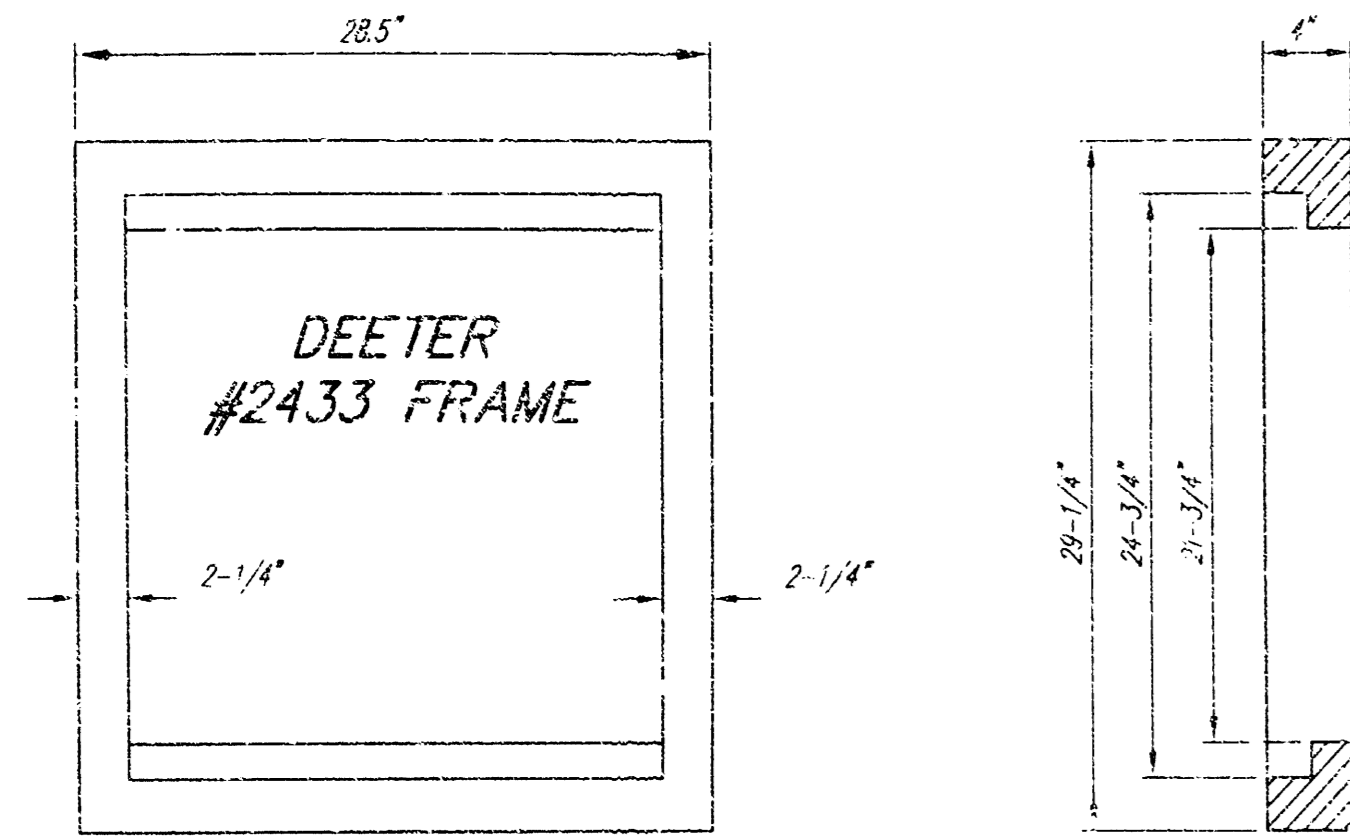
PROJECT
2335D
SHEET
1
OF
3

16 04 2 28



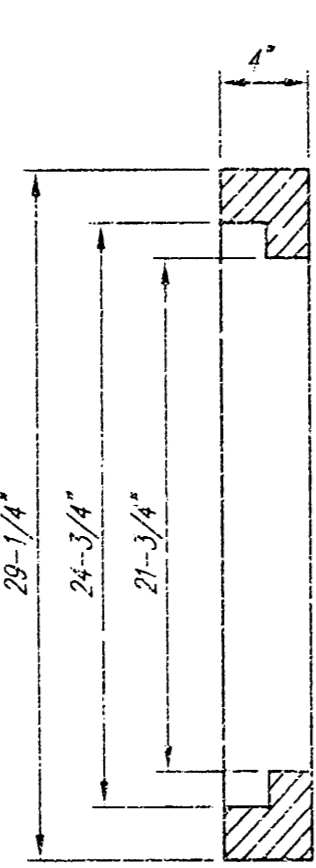
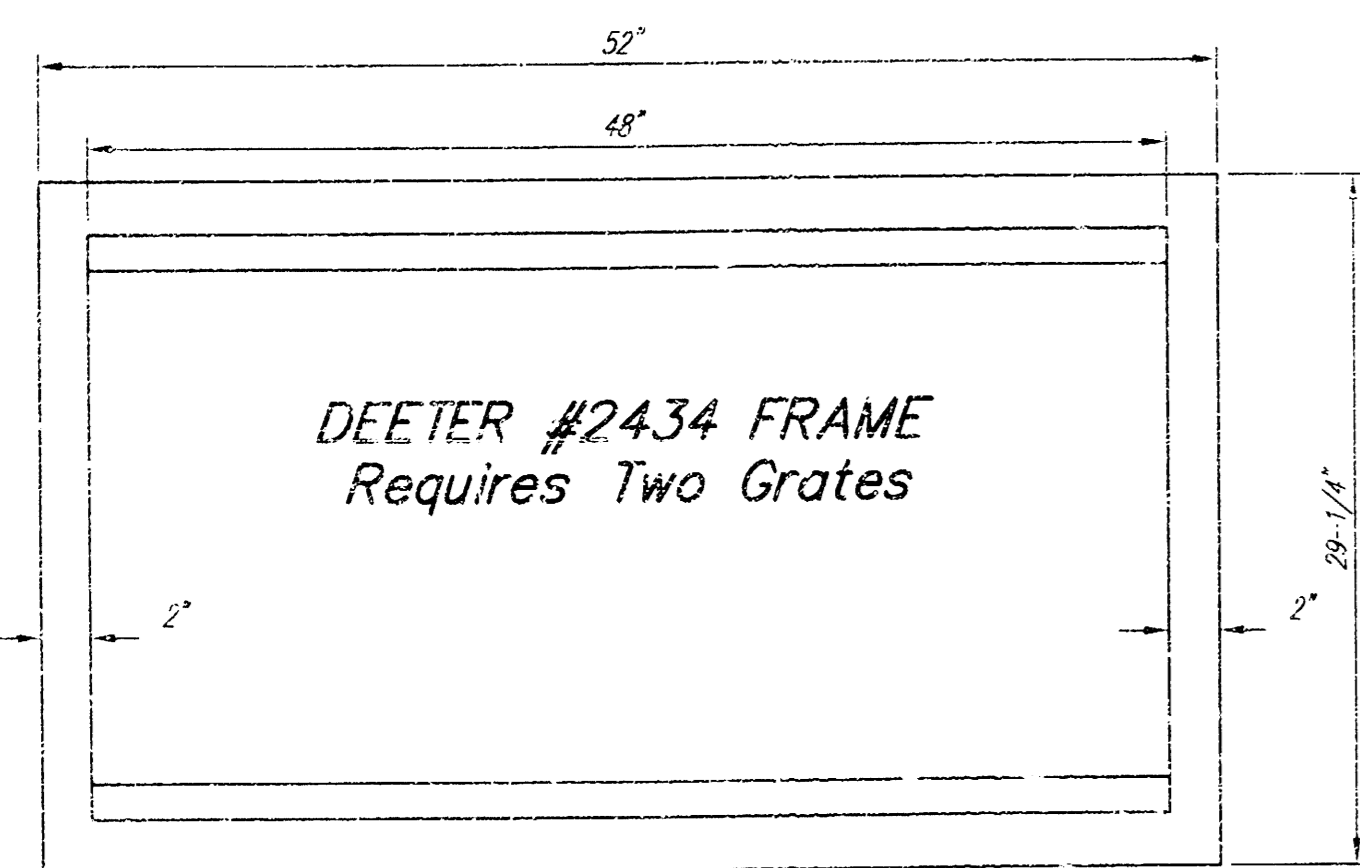
- GENERAL NOTES**
1. Grate frame to be installed on thin mortar cushion to insure full support along brick walls. Concrete used for inlet construction shall be concrete pavement mix.
 2. Inlet Frame and Grate to be Deeter #2035 or approved equal.

ENTERPRISE CAR RENTAL INLET MODIFICATIONS WICHITA, KANSAS		DESIGN CMB	DATE 2/10/03
Ruggles & Bohm, P.A. Engineering, Surveying, Land Planning		DRAWN RA/KWL	PROJECT 21550
924 North Main Wichita, Kansas 67203 www.rbkansas.com		REVIEW	SHEET 2
(316) 264-8008 (316) 264-4621 fax E-mail: info@rbkansas.com		UTILITY	DATE Feb. 10, 2003
DRAWING FILE BASE	PROJECT NUMBER	SHEET 3	

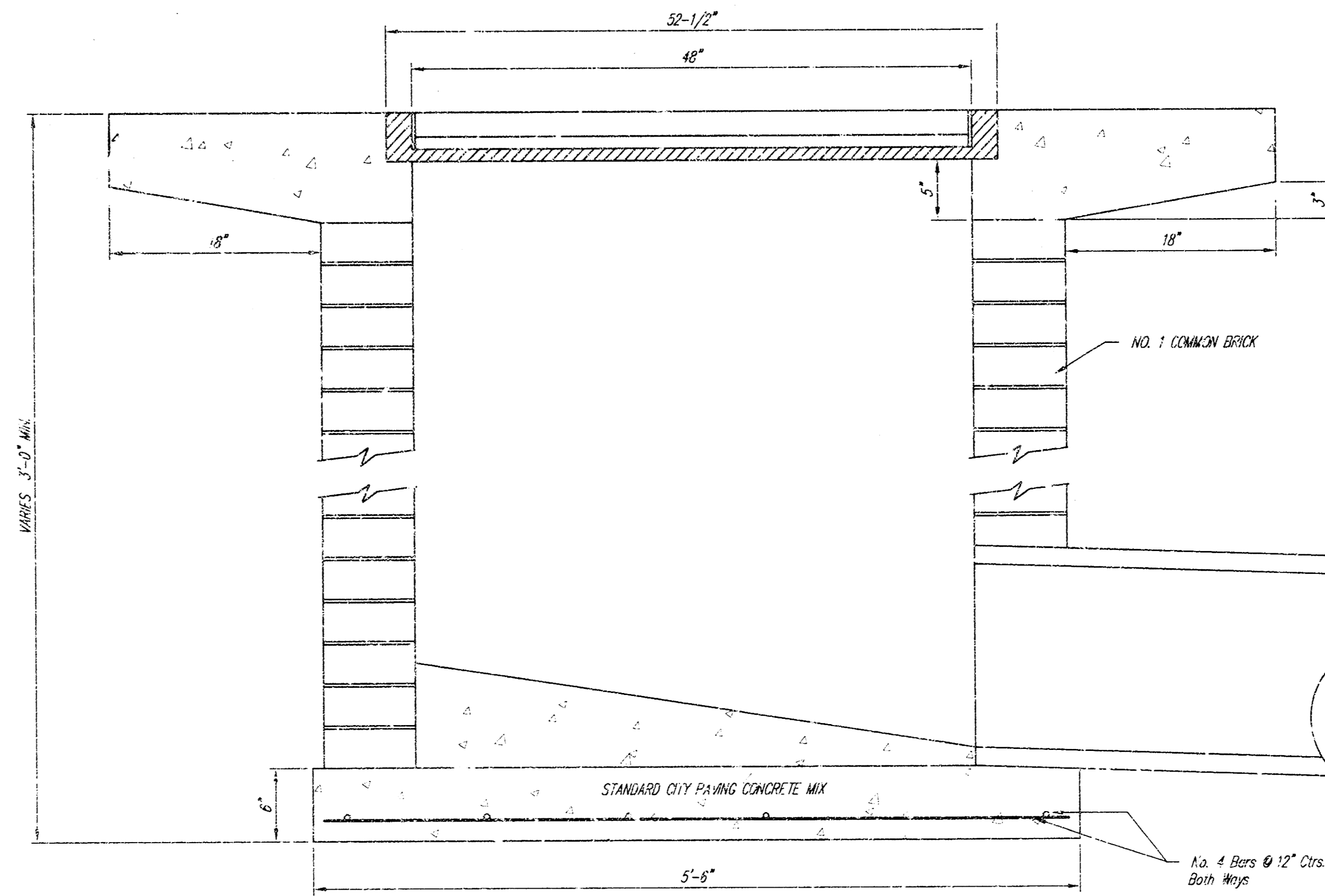
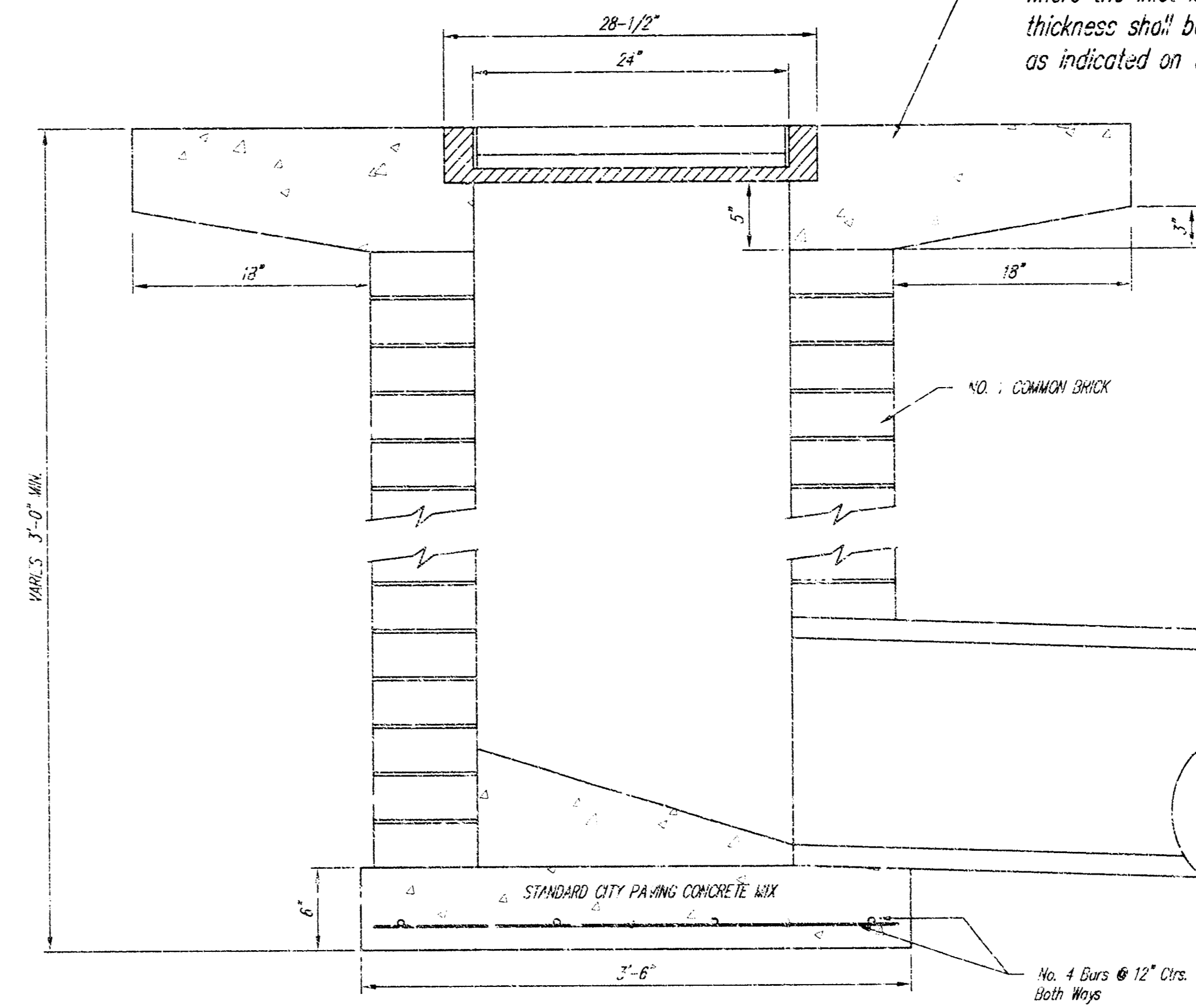
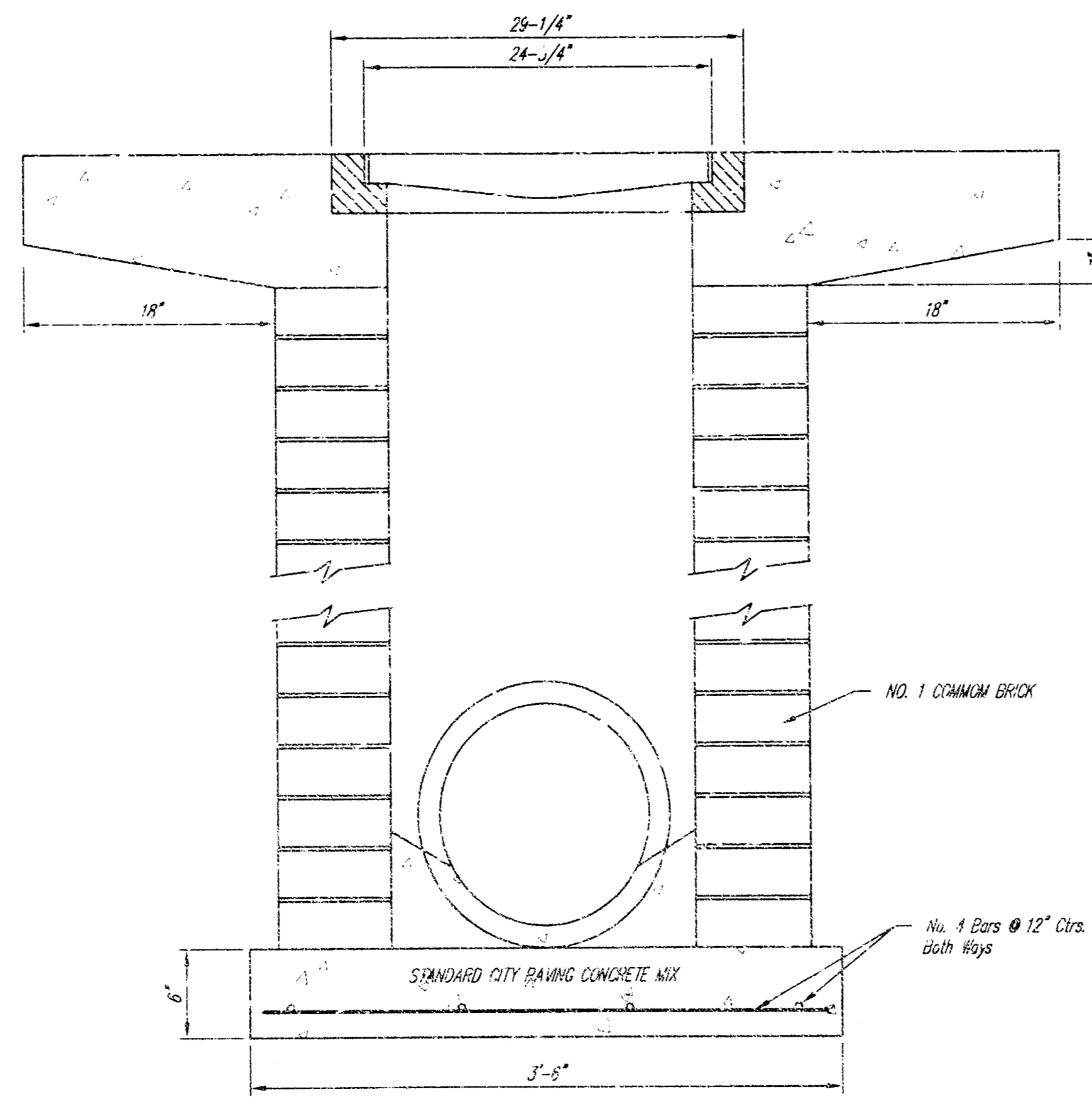


DEETER #2433 GRATE

24" x 24" Frame and Grate Detail

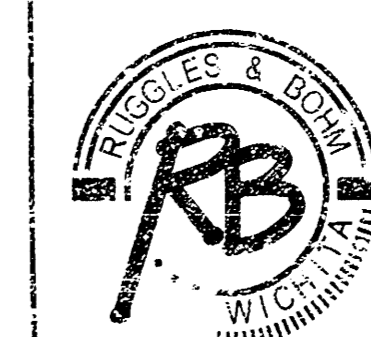


Double 24" x 24" Frame Detail



INLET CAN BE CONSTRUCTED FROM BRICK, PRECAST CONCRETE, OR CAST IN PLACE CONCRETE. NOMINAL DIMENSIONS ON THIS PLAN MUST BE MAINTAINED.

DROP INLET DETAILS
2' X 2' / 2' X 4'
WICHITA, KANSAS



Ruggles & Bohm, P.A.
Engineering, Surveying, Land Planning
924 North Main (316) 264-8008
Wichita, Kansas 67203 (316) 264-4621 fax
www.rbkansas.com E-mail: info@rbkansas.com

PROJECT NUMBER
BASE [Drop Inlet Details] 1318 PPS (607861)

DESIGN	KWL	DATE	2/11/03
DRAWN	KWL	SHEET	3
REVIEW		OF	3
UTILITY		DATE	Feb. 11, 2003