



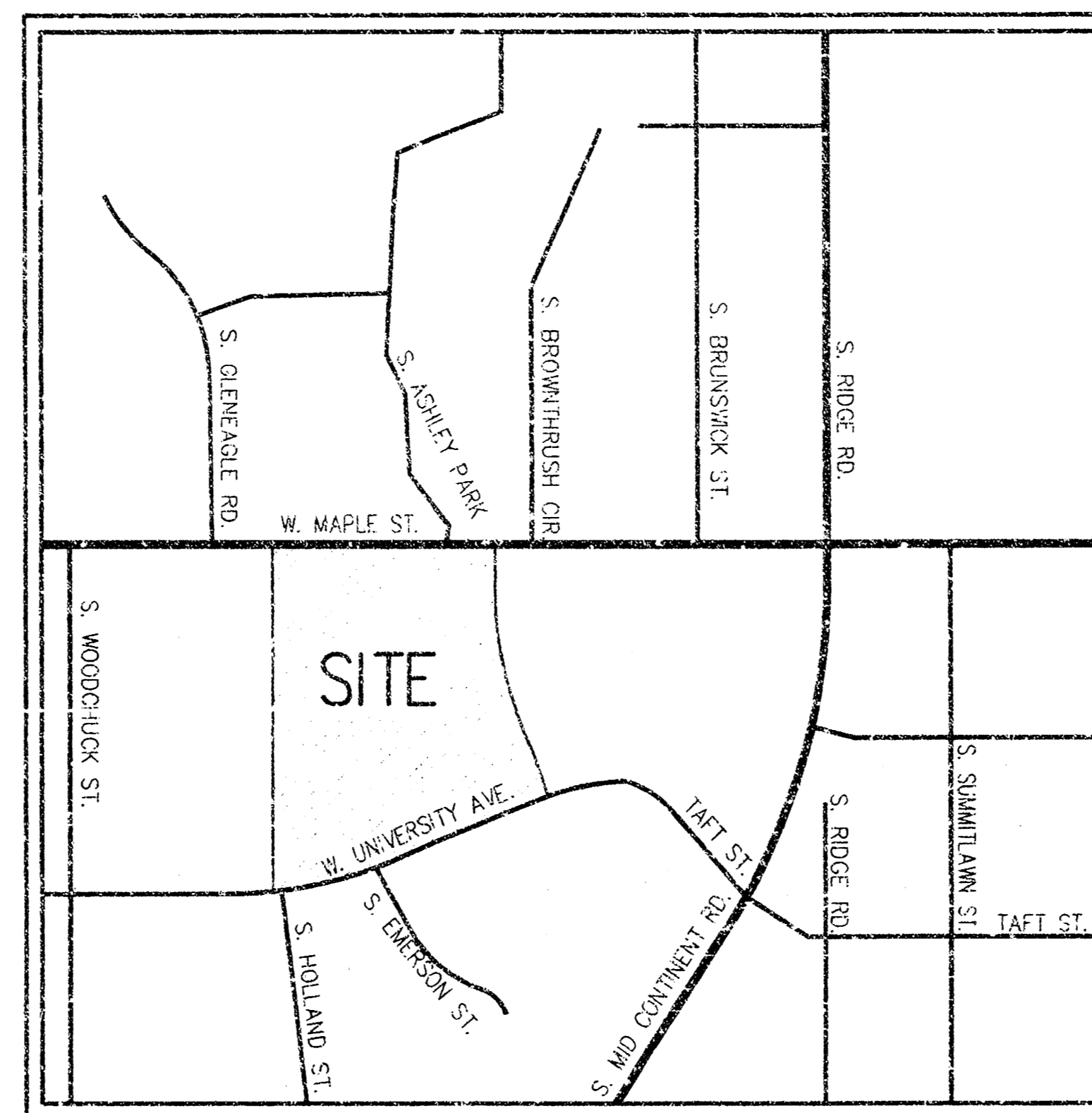
WICHITA, KANSAS

T-1943 Wichita Far West SWS CONSTRUCTION FOR ASHLEY TOWNE CENTRE ADDITION

CITY OF WICHITA PRIVATE PROJECT NO. 1410PPS (607861)
Neil D. Cable, P.E. - City Engineer

GENERAL NOTES

- ALL IMPROVEMENTS WITHIN CITY RIGHTS OF WAYS, WATER AND SANITARY SEWER TO CONFORM TO CITY OF WICHITA STANDARD SPECIFICATIONS.
- THE CONTRACTOR SHALL ABIDE BY ALL APPLICABLE FEDERAL, STATE, AND LOCAL LAWS, REGULATIONS, AND ORDINANCES.
- THE CONTRACTOR IS RESPONSIBLE FOR MAINTAINING, REPAIRING, OR REPLACING ALL EXISTING UTILITIES AND IMPROVEMENTS DURING CONSTRUCTION.
- ALL ON-SITE IMPROVEMENTS SHALL CONFORM TO THE SPECIFICATIONS MADE A PART OF THESE CONSTRUCTION DRAWINGS.
- THE SIZE, TYPE, LOCATION, AND NUMBER OF ALL KNOWN UNDERGROUND UTILITIES ARE APPROXIMATE WHEN SHOWN ON THE DRAWINGS. IT SHALL BE THE RESPONSIBILITY OF THE CONTRACTOR TO VERIFY THE EXISTENCE AND LOCATION OF ALL UNDERGROUND UTILITIES IN THE AREA OF THE WORK. BEFORE COMMENCING NEW CONSTRUCTION, THE CONTRACTOR SHALL BE RESPONSIBLE FOR LOCATING ALL UNDERGROUND UTILITIES AND SHALL BE RESPONSIBLE FOR ALL UNKNOWN UNDERGROUND UTILITIES.
- PRIOR TO COMMENCEMENT OF CONSTRUCTION, THE CONTRACTOR SHALL CONTACT ALL UTILITIES TO COORDINATE SCHEDULES.
- THESE DOCUMENTS ARE INSTRUMENTS OF SERVICE PROVIDED BY KIMLEY-HORN AND ASSOCIATES, INC. AND SHALL NOT BE REPRODUCED OR IN ANY WAY USED BY ANYONE WITHOUT PRIOR WRITTEN APPROVAL FROM KIMLEY-HORN AND ASSOCIATES, INC.
- THESE DOCUMENTS ARE NOT TO BE USED FOR ANY CONSTRUCTION UNLESS SIGNED AND STAMPED BY A LICENSED PROFESSIONAL ENGINEER IN THE EMPLOY OF KIMLEY-HORN AND ASSOCIATES, INC. THE CONTRACTOR SHALL HAVE IN HIS POSSESSION AT ALL TIMES ONE (1) SIGNED COPY OF THE APPROVED PLANS.
- SURVEY INFORMATION, TOPOGRAPHIC CONTOURS AND OTHER EXISTING FEATURES WAS PROVIDED BY OTHERS. KIMLEY-HORN AND ASSOCIATES, INC. CANNOT BE HELD LIABLE FOR ANY INACCURACY IN THE SURVEY INFORMATION.
- SOILS ENGINEERING, PAVEMENT DESIGN, SLOPE AND ROAD BED STABILIZATION, RETAINING WALLS, AND SUBGRADE IMPROVEMENTS HAVE BEEN PROVIDED BY OTHERS. SEE RECOMMENDATIONS AND SPECIFICATIONS BY SOILS ENGINEER.
- A PRE-CONSTRUCTION MEETING INVOLVING THE CONTRACTOR, THE ENGINEER, THE OWNER, AND CITY OF WICHITA SHALL BE HELD PRIOR TO THE START OF ANY ROADWAY AND/OR UTILITY CONSTRUCTION. THE CONTRACTOR WILL BE REQUIRED TO NOTIFY THE OWNER AND THE ENGINEER OF THE DATE HE INTENDS TO START CONSTRUCTION.
- CONTRACTOR AGREES THAT HE SHALL ASSUME SOLE AND COMPLETE RESPONSIBILITY FOR JOB SITE CONDITIONS DURING THE COURSE OF CONSTRUCTION OF THIS PROJECT, INCLUDING SAFETY OF ALL PERSONS AND PROPERTY; THAT THESE REQUIREMENTS SHALL APPLY CONTINUOUSLY AND NOT BE LIMITED TO NORMAL WORKING HOURS, AND THAT THE CONTRACTOR SHALL DEFEND, INDEMNIFY, AND HOLD THE OWNER AND THE ENGINEER HARMLESS FROM ANY AND ALL LIABILITY, REAL OR ALLEGED, IN CONNECTION WITH THE PERFORMANCE OF WORK ON THIS PROJECT, EXCEPT FOR LIABILITY ARISING FROM THE SOLE NEGLIGENCE OF THE OWNER OR THE ENGINEER.
- THE CONTRACTOR IS ADVISED THAT OTHER CONTRACTORS MAY BE WORKING IN THE AREA OF THIS PROJECT. THE CONTRACTOR WILL BE REQUIRED TO COORDINATE HIS WORK WITH SAID CONTRACTORS. ALL COSTS INCIDENTAL TO THIS REQUIREMENT SHALL BE INCLUDED IN THE ORIGINAL CONTRACT PRICE FOR THE PROJECT.
- SHEETING AND BRACING: THE SIDES OF ANY EXCAVATION OVER FIVE FEET DEEP (OR AT DEPTHS THAT WILL INTRODUCE CAVING) SHALL BE SUPPORTED BY ADEQUATE SHORING. ALL EXCAVATION, TRENCHING AND SHORING SHALL BE IN STRICT COMPLIANCE WITH APPLICABLE OSHA RULES AND REGULATIONS.
- FOR STORM SEWER CULVERTS, LOCATION OFFSETS ARE MEASURED TO UPSTREAM OR DOWNSTREAM END OF FLARED END SECTION.
- THE CONTRACTOR SHALL OBTAIN, AT HIS EXPENSE, ALL PERMITS WHICH ARE NECESSARY TO PERFORM THE PROPOSED WORK.
- ALL TRAFFIC CONTROL SHALL FOLLOW MUTCD STANDARDS.
- CLEAN-UP AND RESTORATION: RESTORE ALL PAVEMENTS, CURBS AND GUTTERS, SIDEWALKS, UTILITIES, FENCES, YARDS, LAWNS, AND OTHER STRUCTURES (OR SURFACES AFFECTED BY CONSTRUCTION) TO CONDITION EQUAL TO OR BETTER THAN BEFORE WORK BEGAN AND TO SATISFACTION OF THE ENGINEER, AUTHORITY HAVING JURISDICTION, AND PROPERTY OWNER. REMOVE AND DISPOSE OF ALL WASTE MATERIAL OFF-SITE. GENERAL CLEAN-UP OF THE AREA SHALL BE PERFORMED ON A DAILY BASIS TO THE SATISFACTION OF THE ENGINEER. PROPER SAFETY PROVISIONS SHALL BE MAINTAINED UNTIL COMPLETION OF WORK.
- CONTRACTOR SHALL CLEAN ALL STREETS AFFECTED BY THIS CONSTRUCTION FOR THE ENTIRE WIDTH OF THE STREET.
- ALL DIMENSIONS AND ELEVATIONS ARE TO FLOWLINE UNLESS NOTED OTHERWISE.



VICINITY MAP
NOT TO SCALE

CONTACTS

OWNER:
TARGET
1000 NICOLLET MALL, TPN-12F
MINNEAPOLIS, MINNESOTA 5540
TEL: (612) 761-5201
FAX: (612) 761-3727
CONTACT: JANA BEAN

CITY ENGINEER'S OFFICE:
CITY HALL - SEVENTH FLOOR
455 NORTH MAIN STREET
WICHITA, KANSAS 67202-1620
TEL: (316) 268-4501
FAX: (316) 268-4114

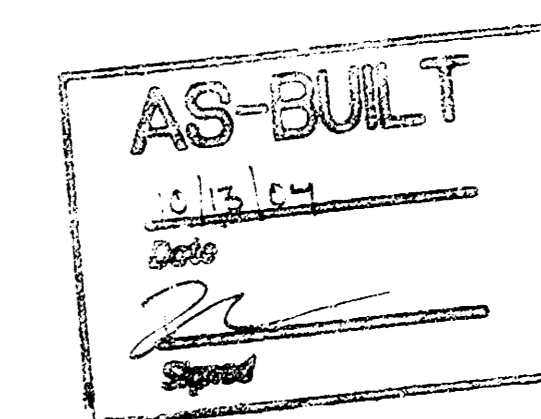
CIVIL ENGINEER:
KIMLEY-HORN & ASSOCIATES, INC.
950 SEVENTEENTH STREET, SUITE 1050
DENVER, COLORADO 80202
TEL: (303) 228-2300
FAX: (303) 446-8678
CONTACT: SAMUEL B. SOURS, P.E.

LANDSCAPE ARCHITECT:
MCCLUGGAGE, WASSICKLE AND PERRY
125 S. WASHINGTON
WICHITA, KS 67202
TEL: (316) 262-0451
FAX: (316) 262-5465
CONTACT: DUSTIN RANDOLPH

LAND SURVEYOR:
SHAFFER, KLINE & WARREN, INC.
11100 WEST 91ST STREET
OVERLAND PARK, KANSAS 66214
TEL: (913) 888-7800
FAX: (913) 888-7868
CONTACT: SCOTT D. CONIFER

SHEET INDEX

SHEET NO.	DESCRIPTION	REVISIONS		
		11/11/03	11/20/03	1/27/04
C1.0	COVER SHEET			
C4.0	OVERALL UTILITY PLAN			
C4.1	STORM SEWER PLAN AND PROFILE LINE A			
C4.2	STORM SEWER PLAN AND PROFILE LINE B			
C4.3	LANDSCAPE ISLAND DRAIN TILE & PLANTER DRAINS			
C4.4	STORM SEWER DETAILS			
C4.5	STORM SEWER DETAILS			
C4.6	STORM SEWER DETAILS			



APPROVED AS NOTED
By CITY ENGINEER OF WICHITA

Sanitary Sewers _____
Storm Sewers URH 1/30/04
Driveway Approaches _____
Water Mains _____
Paving _____

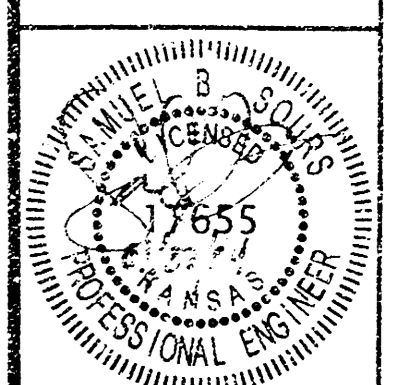
NOTE TO CONTRACTOR
INSPECTION AND TESTING FOR THIS PROJECT IS TO BE PROVIDED BY A LICENSED CONSULTING ENGINEERING FIRM UNDER CONTRACT WITH THE OWNER/DEVELOPER. SAID INSPECTION IS TO BE IN ACCORDANCE WITH THE CITY OF WICHITA STANDARD CONSTRUCTION ENGINEERING PRACTICES AND CERTIFIED BY A LICENSED PROFESSIONAL ENGINEER. NO WORK SHALL BE PERFORMED IN DEDICATED EASEMENTS OR THE PUBLIC RIGHT-OF-WAY BY THE CONTRACTOR WITHOUT SUCH INSPECTION NOR SHALL ANY WORK BE COMPLETED IN DEDICATED EASEMENTS OR PUBLIC RIGHT-OF-WAY WITHOUT WRITTEN AUTHORIZATION BY THE CITY ENGINEER.

NO.	REVISIONS	NAME	DATE
3	CITY OF WICHITA-FINAL SUBMITTAL R/A	11/27/03	
2	CITY OF WICHITA, KS-SUBMITTAL R/A	11/20/03	
1	TARGET I.C.P.R.	11/11/03	

Kimley-Horn and Associates, Inc.
950 Seventeenth Street, Suite 1050
Denver, Colorado 80202
(303) 228-2300
© 2002 Kimley-Horn and Associates, Inc.
Engineering, Planning, and Environmental Consultants

DRAWN BY: ALY
DESIGNED BY: CRF
CHECKED BY: CRF
DATE: 11/11/03

TARGET T-1943
SWS CONSTRUCTION FOR ASHLEY TOWNE CENTRE ADDITION
CITY OF WICHITA PRIVATE PROJECT NO. 1410PPS (607861)

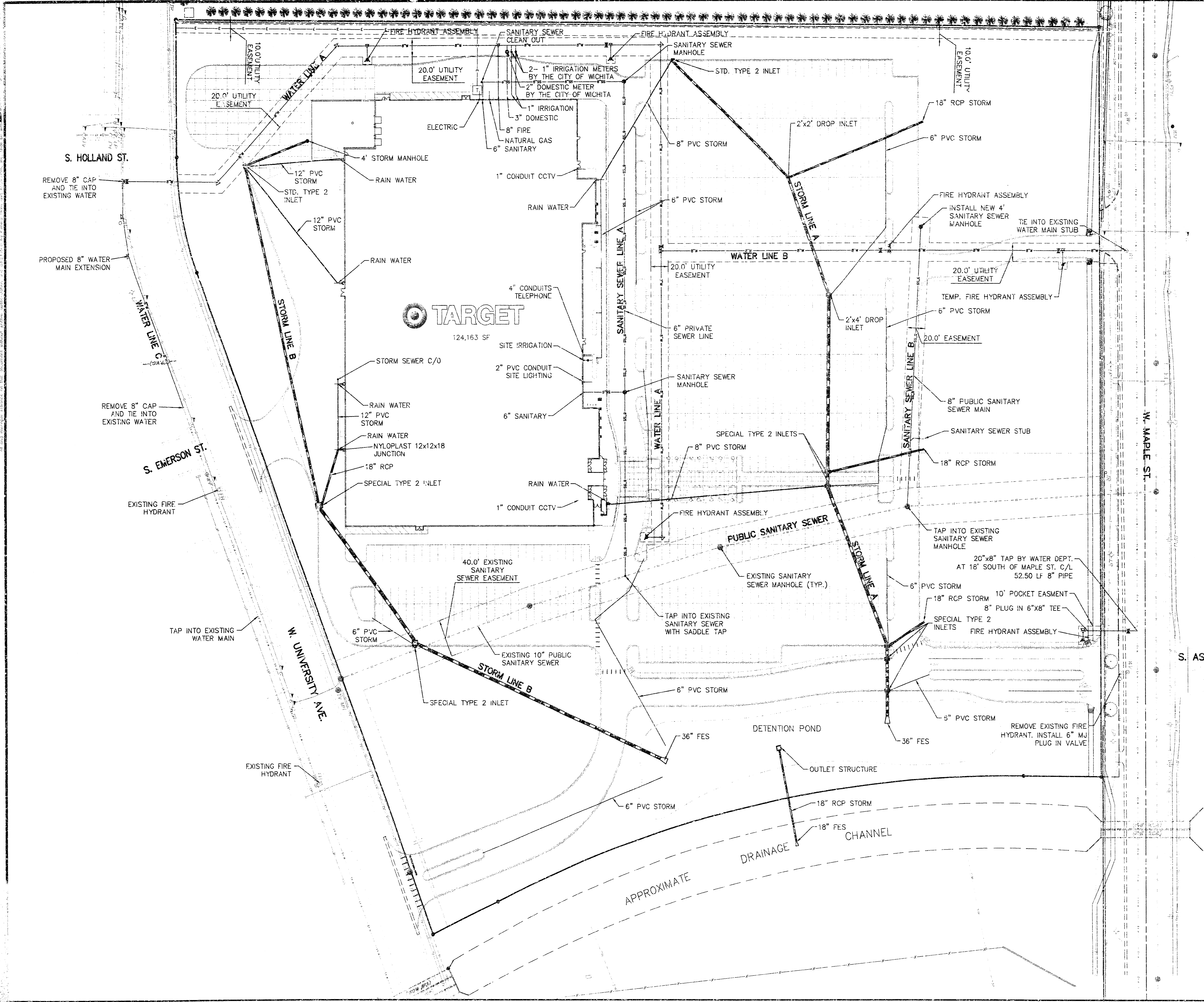


PROJECT NO.
066033000
DRAWING NAME
20CCOV-sws
SHEET NUMBER
C1.0

COVER SHEET

This document, together with the contract and design, represents the entire agreement between the parties and no oral or written agreement, modification or supplement is intended or shall be effective.

...wp20CUTL-sws.dwg, 01/27/2004 12:33:34 PM



LEGEND

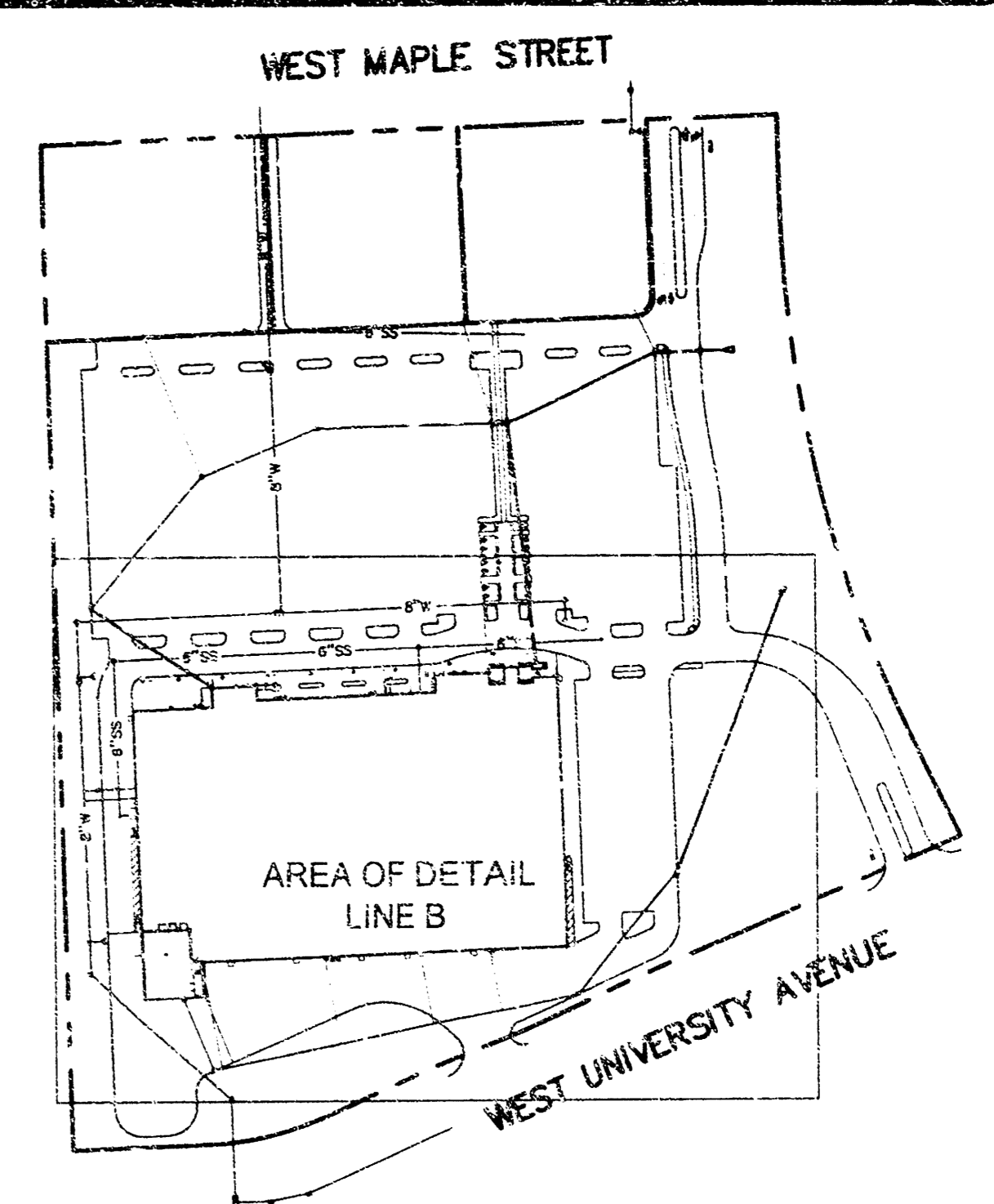
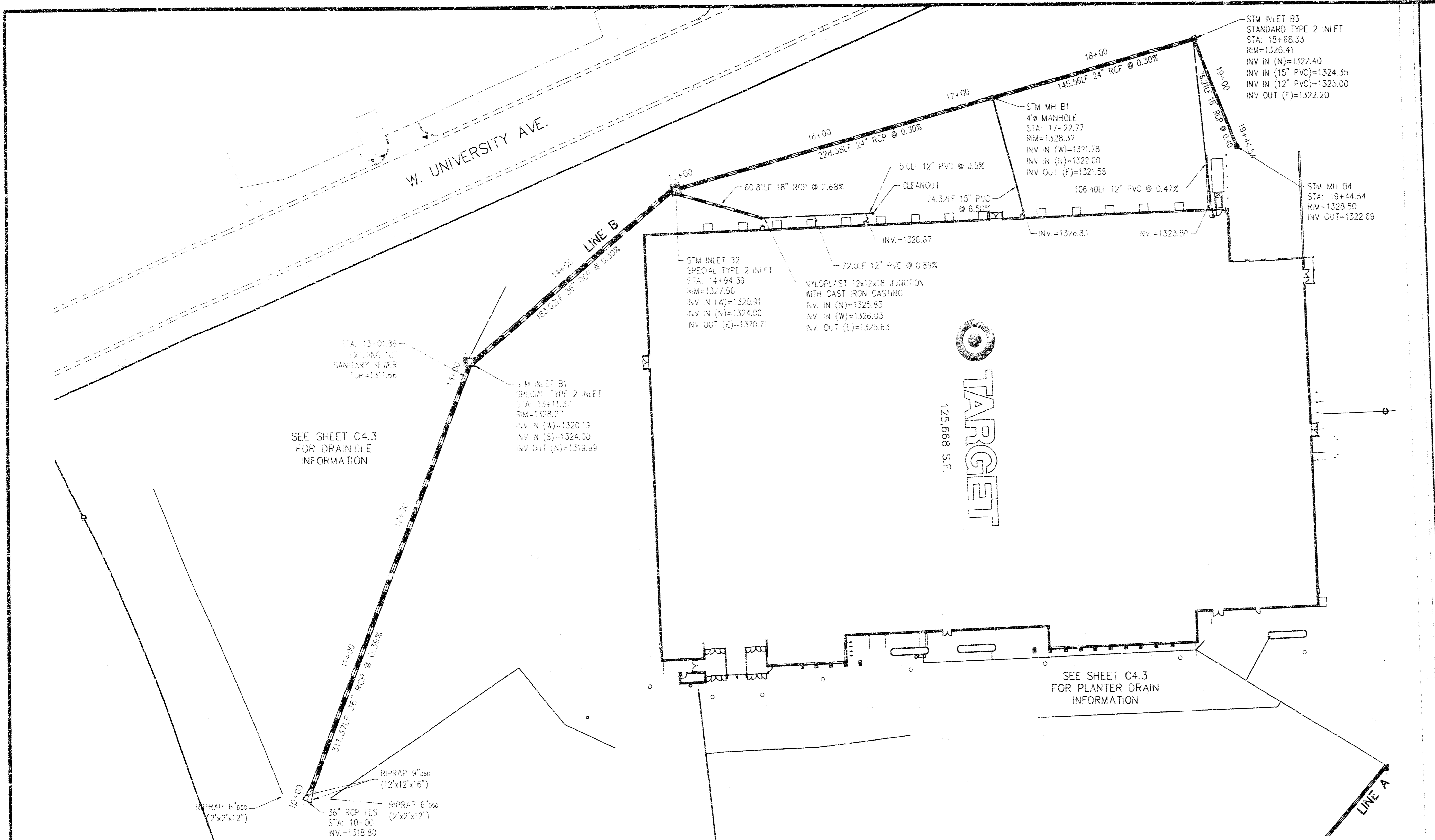
- EXISTING EASEMENT
- - - PROPOSED EASEMENT
- 8" WATER LINE
- 6" SANITARY SEWER (PRIVATE)
- 8" SANITARY SEWER (PUBLIC)
- PRIVATE STORM SEWER
- PROPOSED ELECTRIC LINE
- ▲ FIRE HYDRANT
- ✕ GATE VALVE
- ⊕ WATER FITTING

NORTH

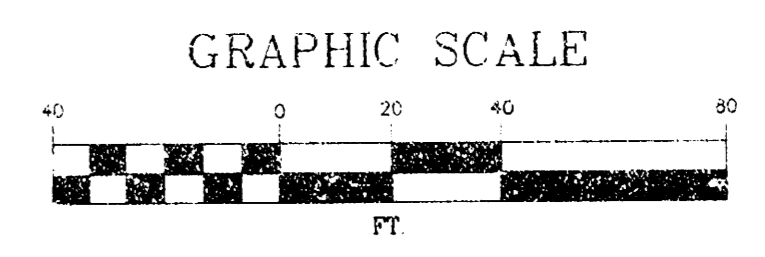
GRAPHIC SCALE
0 25 50 100
FT.

<p>Minley-Horn and Associates, Inc.</p> <p>2000 48th St., Suite 100 Wichita, KS 67214 Tel: 316-261-1100 Fax: 316-261-1101 www.minley-horn.com</p>	<p>PROJECT NO. 066033000 DRAWING NAME 20CUTL-sws SHEET NUMBER C4.0</p>
<p>TARGET T-1943 SWS CONSTRUCTION FOR ASHLEY TOWNE CENTRE ADDITION CITY OF WICHITA PRIVATE PROJECT NO. 1410PPS (607861)</p>	
<p>OVERALL UTILITY PLAN</p>	

1. CHECKED BY: J.P.	DATE: 11/17/03
2. DESIGNED BY: J.P.	DATE: 11/17/03
3. CITY OF WICHITA - FINAL SUBMITTAL (RFA) 1/27/04	DATE: 1/27/04
4. CITY OF WICHITA - KS SUBMITTAL (RFA) 1/27/04	DATE: 1/27/04
5. PREPARED BY: J.P.	DATE: 11/17/03
6. REVISIONS:	DATE:

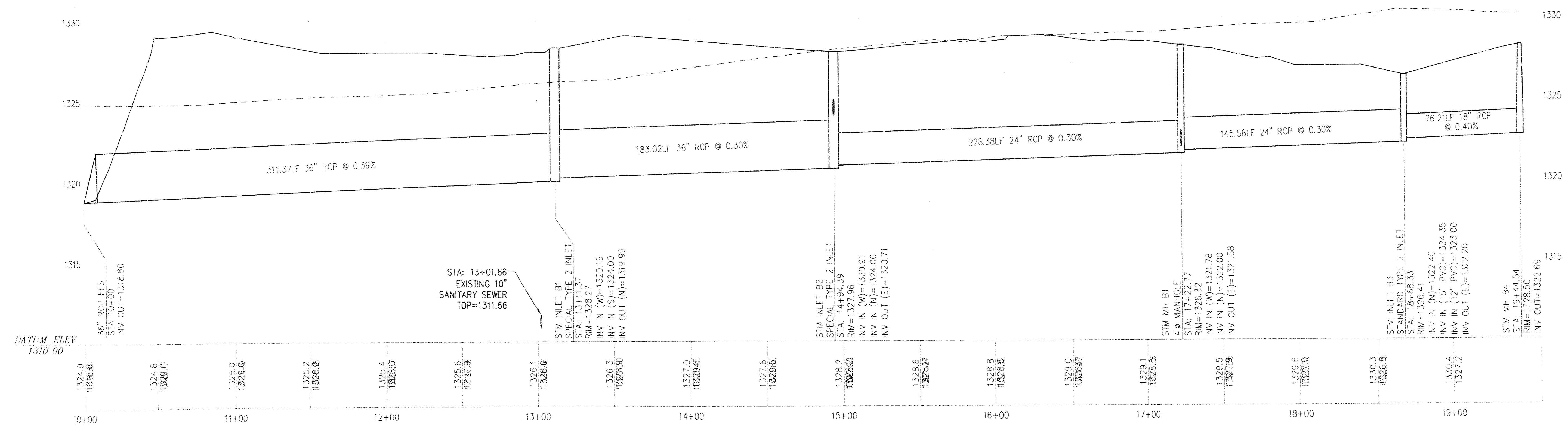


KEYMAP
N.T.S.



- STORM SEWER NOTES:**
- 4"-6" PVC SHALL BE SCHEDULE 40
 - 8" & ABOVE PVC SHALL BE SCHEDULE 35 (OO THROUGH 10')
 - ALL CATCH BASINS SHALL HAVE FINGER DRAINS. (SEE DETAIL ON SHEET C4.3)

STORM SEWER LINE B
VERTICAL SCALE @ 24"x36" SHEET SIZE: 1"=4'



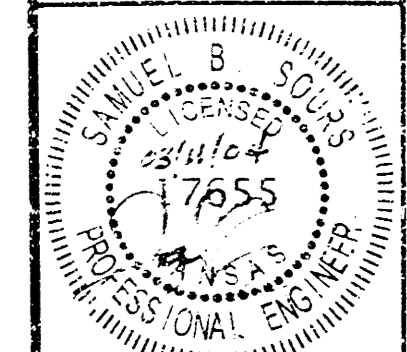
TARGET REVIEWED BY:

Site Development Manager	_____	Not Reviewed	Approved
Project Architect	_____	Not Reviewed	Approved
Project Engineer (M)	_____	Not Reviewed	Approved
Project Engineer (E)	_____	Not Reviewed	Approved
Project Engineer (S)	_____	Not Reviewed	Approved

NO.	DESCRIPTION	DATE	BY
1	ISSUED FOR PERMITS	11/11/09	SWK
2	REVISIONS	11/11/09	SWK
3	REVISIONS	11/11/09	SWK
4	REVISIONS	11/11/09	SWK

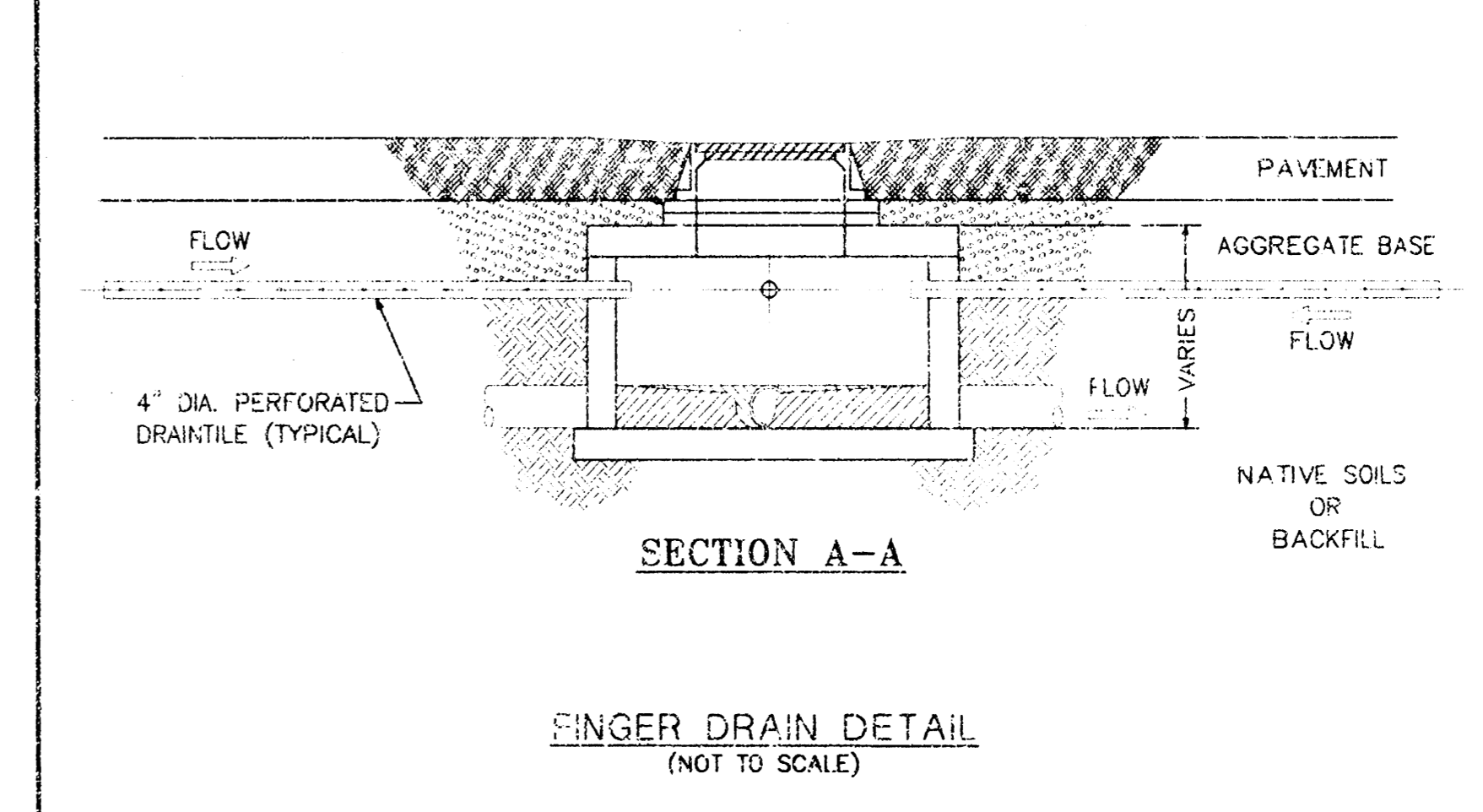
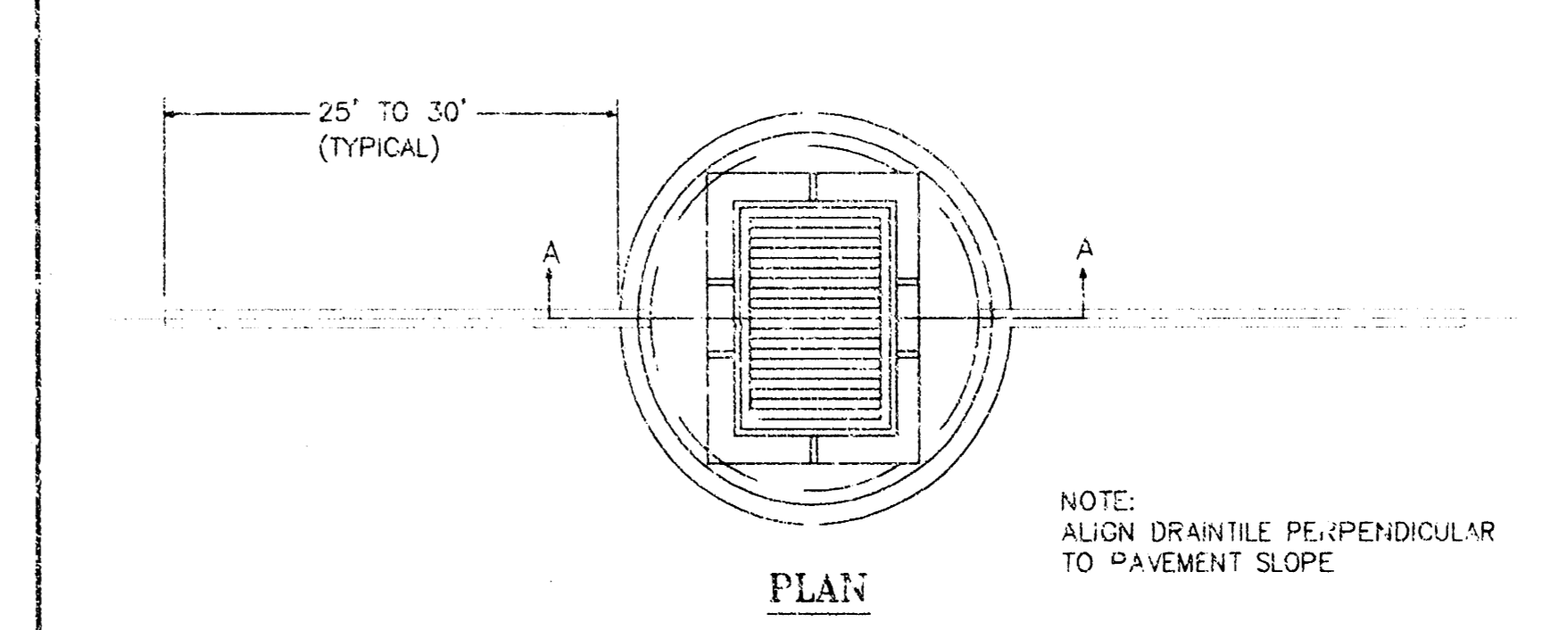
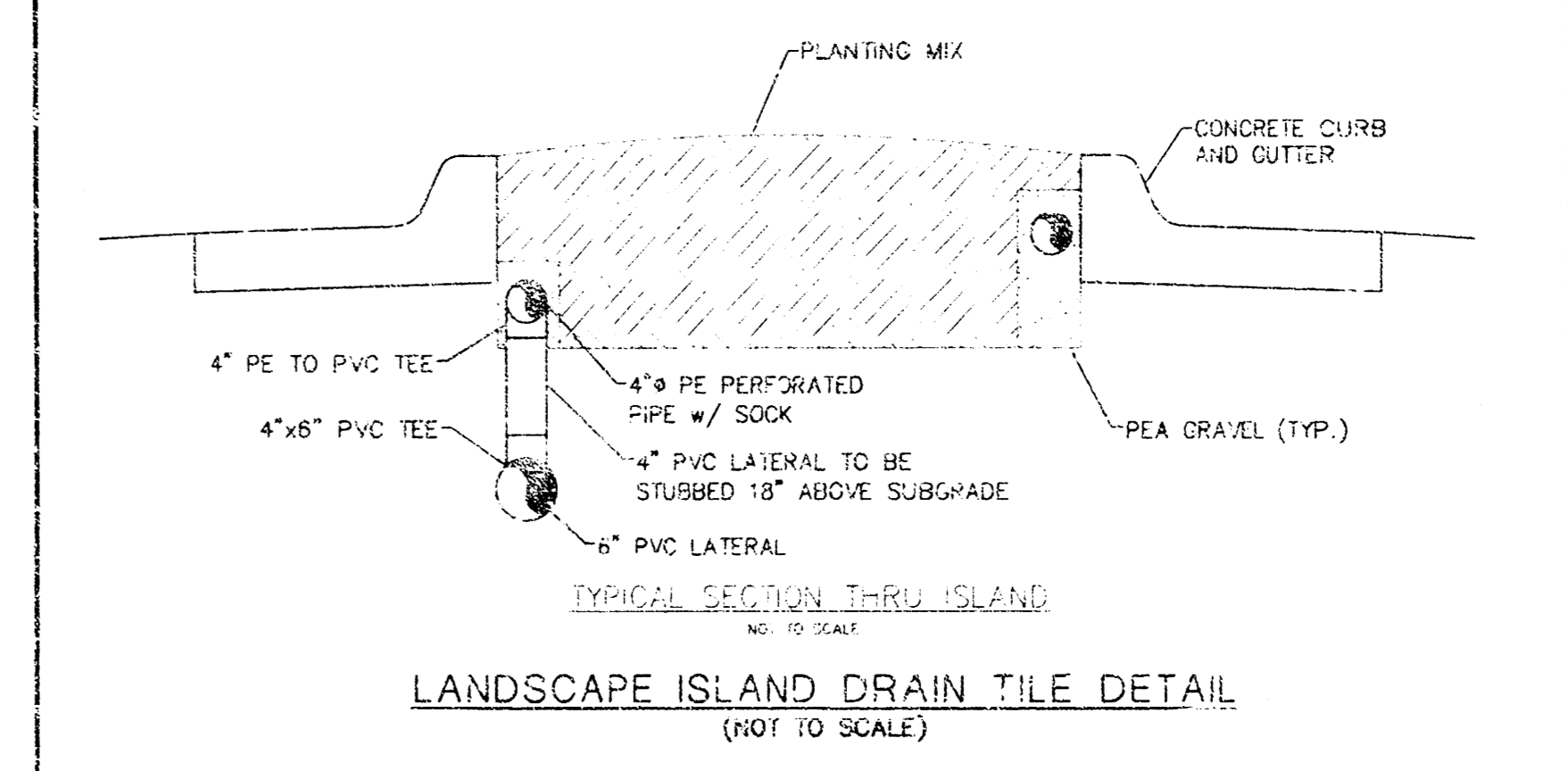
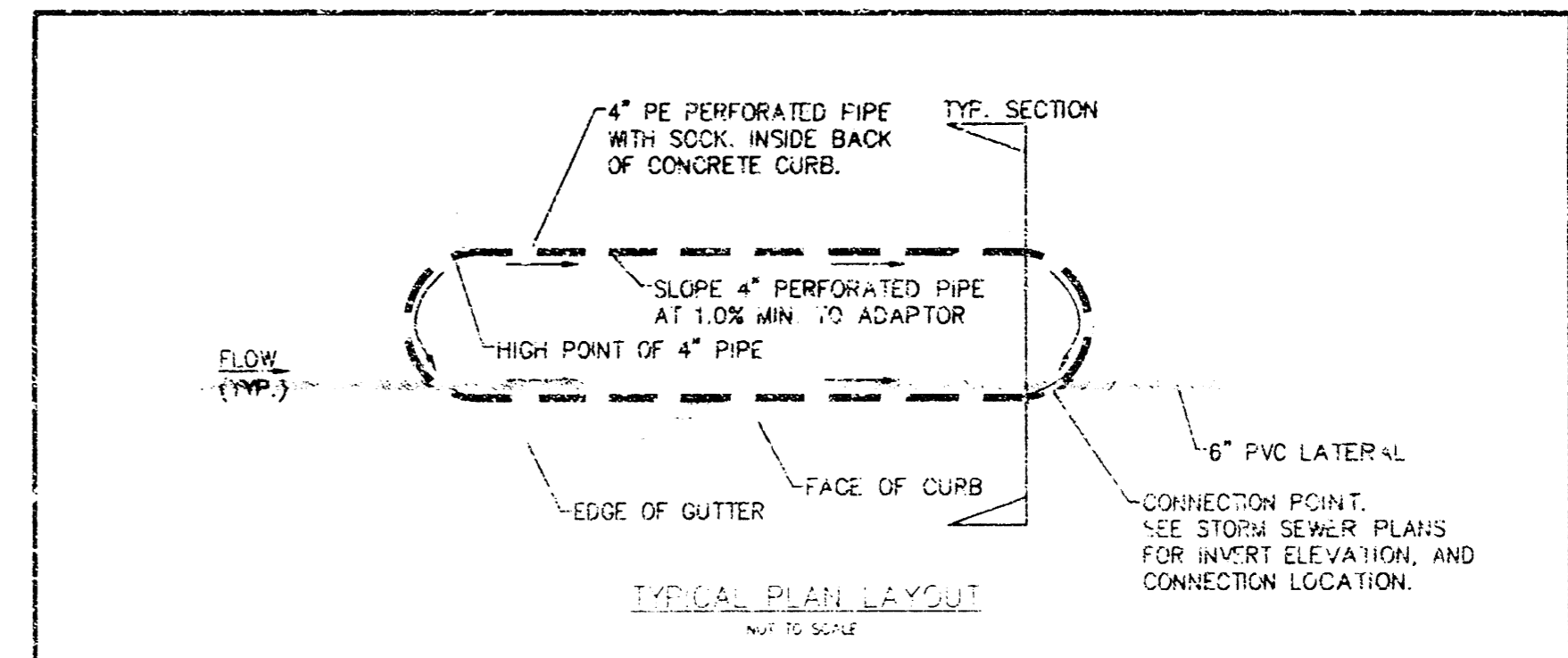
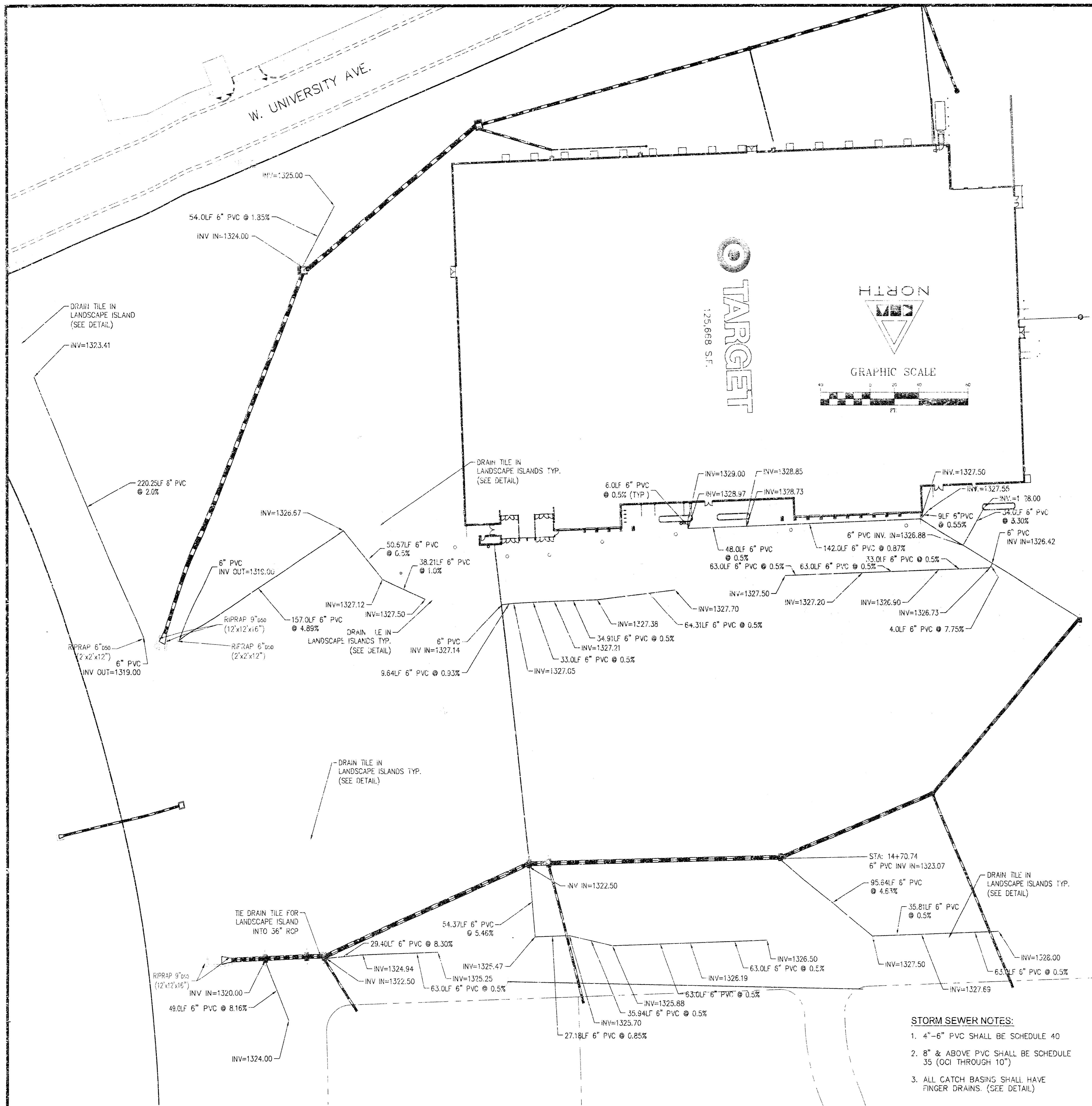
TARGET T-1943
SWS CONSTRUCTION FOR ASHLEY TOWNE CENTRE ADDITION
CITY OF WICHITA PRIVATE PROJECT NO. 1410PPS (607861)

STORM SEWER PLAN & PROFILE - LINE B



PROJECT NO.
066033000
DRAWING NAME
30CSTM-SWS
SHEET NUMBER
C4.2

Approved only for conformance of the site construction documents to Target Developer Guide, Edition 2.3 and the Target building documents. Consultant is solely responsible for completeness, accuracy, and dimensions on the site construction documents.



- STORM SEWER NOTES:**
1. 4"-6" PVC SHALL BE SCHEDULE 40
 2. 8" & ABOVE PVC SHALL BE SCHEDULE 35 (OCI THROUGH 10")
 3. ALL CATCH BASINS SHALL HAVE FINGER DRAINS. (SEE DETAIL)
 4. ALL 10" OR SMALLER PIPES ARE NOT PART OF THIS PROJECT. THESE PIPES WILL REQUIRE A PERMIT FROM THE OFFICE OF CENTRAL INSPECTION.

- STORM SEWER NOTES:**
1. 4"-6" PVC SHALL BE SCHEDULE 40
 2. 8" & ABOVE PVC SHALL BE SCHEDULE 35 (OCI THROUGH 10")
 3. ALL CATCH BASINS SHALL HAVE FINGER DRAINS. (SEE DETAIL)

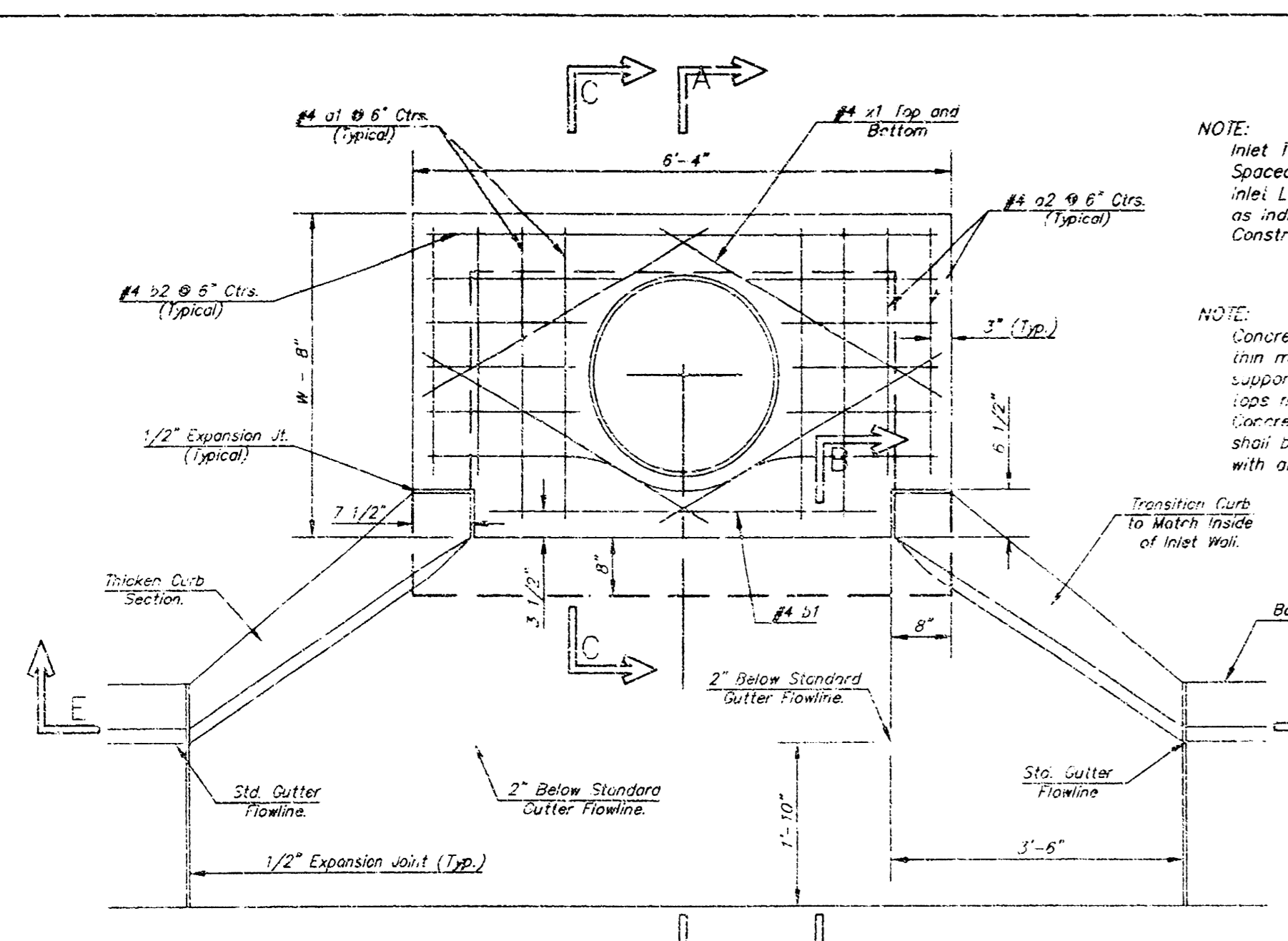
TARGET REVIEWED BY:

Site Development Manager	_____	Not Reviewed	Approved
Project Architect	_____	Not Reviewed	Approved
Project Engineer (M)	_____	Not Reviewed	Approved
Project Engineer (E)	_____	Not Reviewed	Approved
Project Engineer (S)	_____	Not Reviewed	Approved

Approved only for performance of the site construction documents by Target Developer/Consultant. Consultant is solely responsible for completeness, accuracy, and dimensions on the site construction documents.

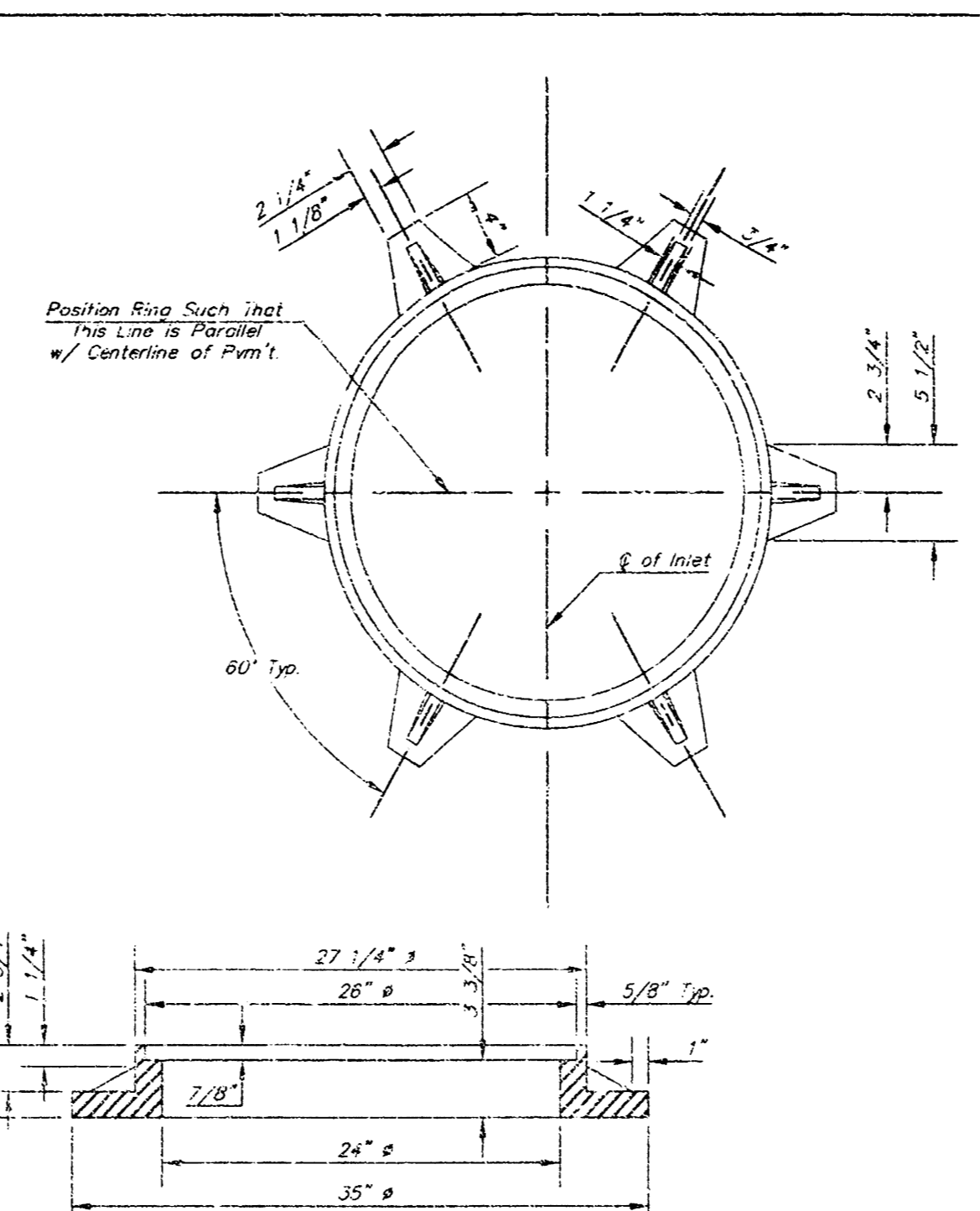
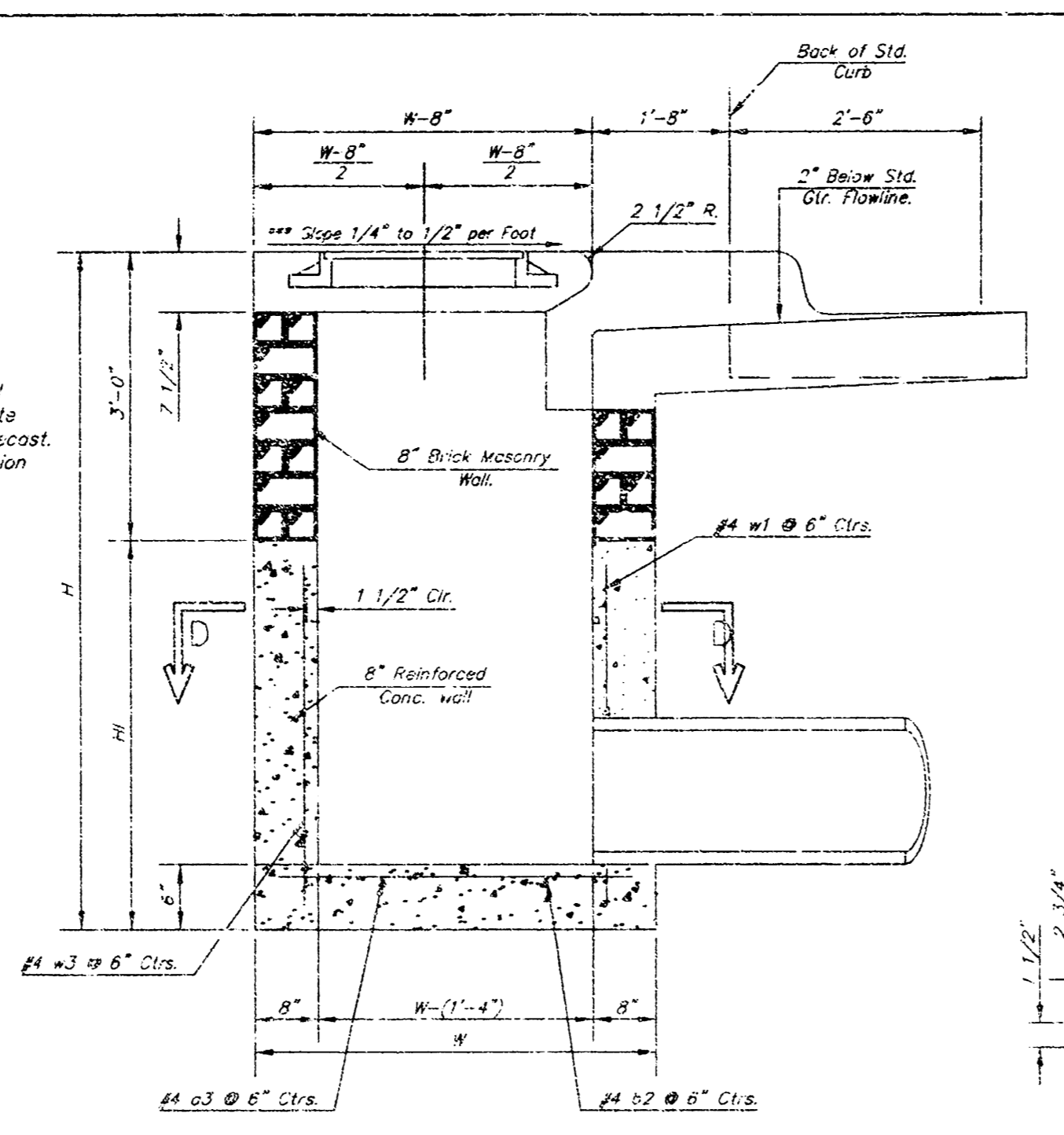
TARGET T-1943
 SWS CONSTRUCTION FOR ASHLEY TOWNE CENTRE ADDITION
 CITY OF WICHITA PRIVATE PROJECT NO. 1410PPS (6/2/86)
LANDSCAPE ISLAND DRAIN TILE & PLANTER DRAINS

DATE: 11/13/14
 DRAWN BY: J. W. WILSON
 CHECKED BY: J. W. WILSON
 APPROVED BY: J. W. WILSON
 PROJECT NO. 1410PPS (6/2/86)
 SHEET NO. 30C-STM-SWS
 SHEET NUMBER: C4.3

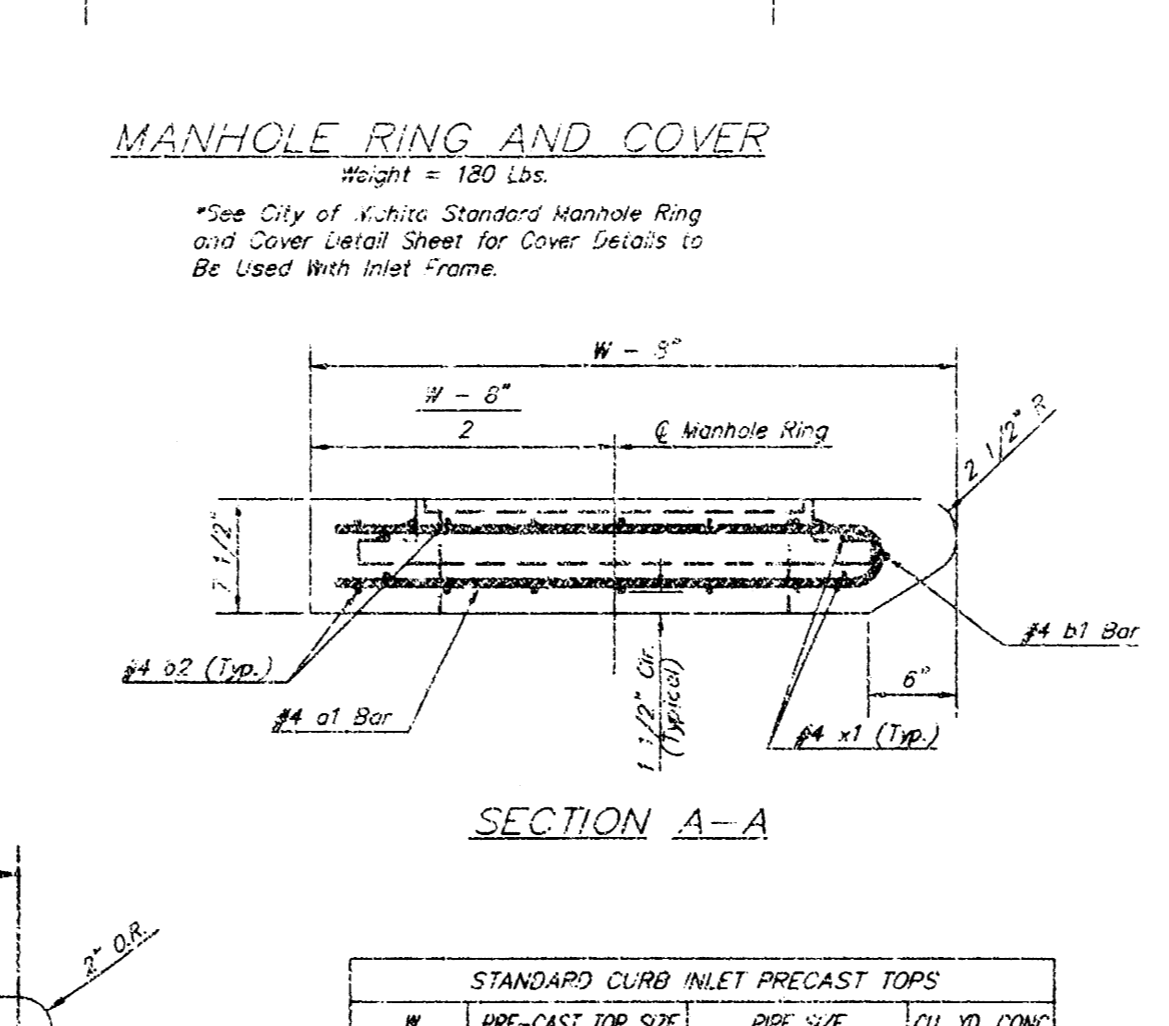
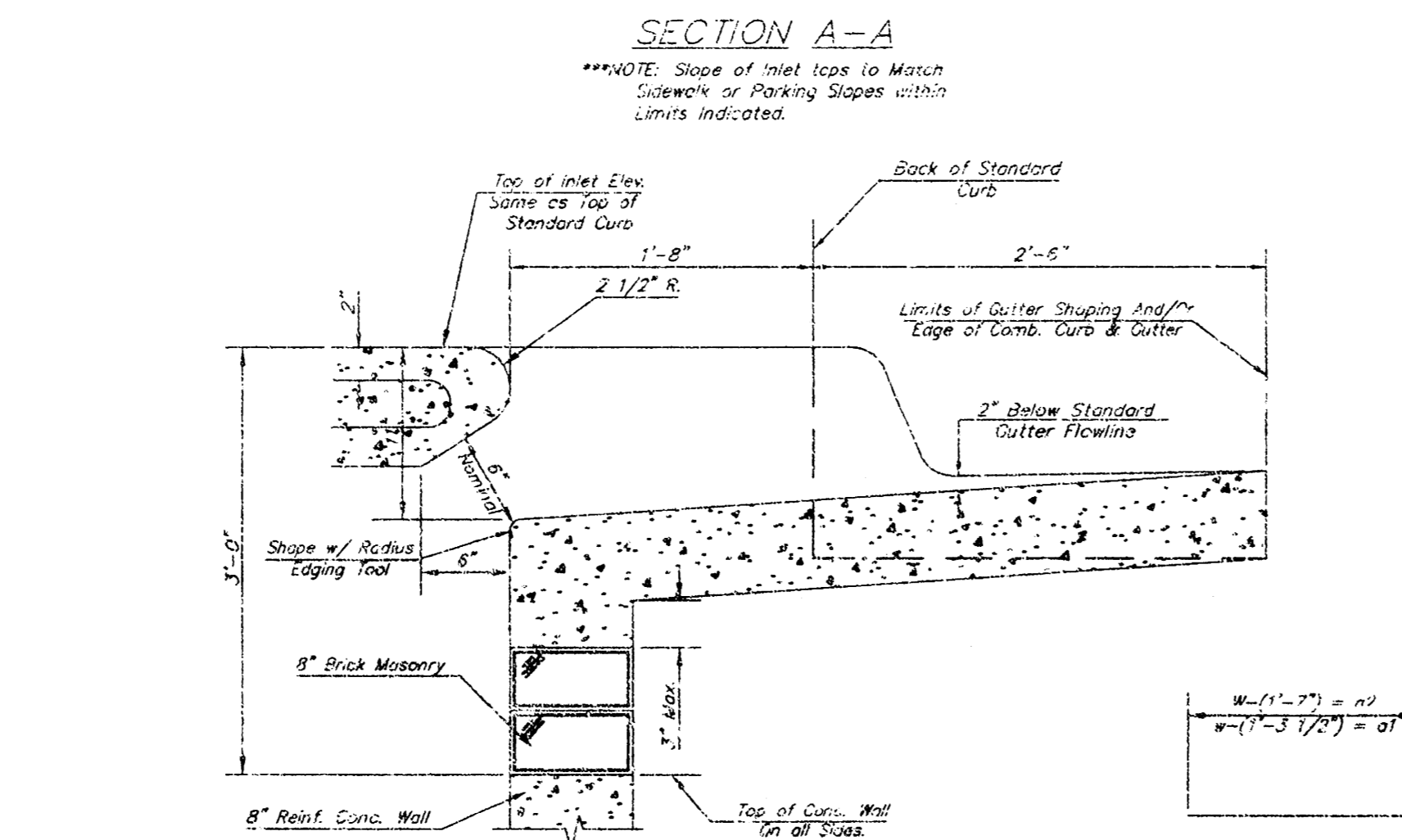
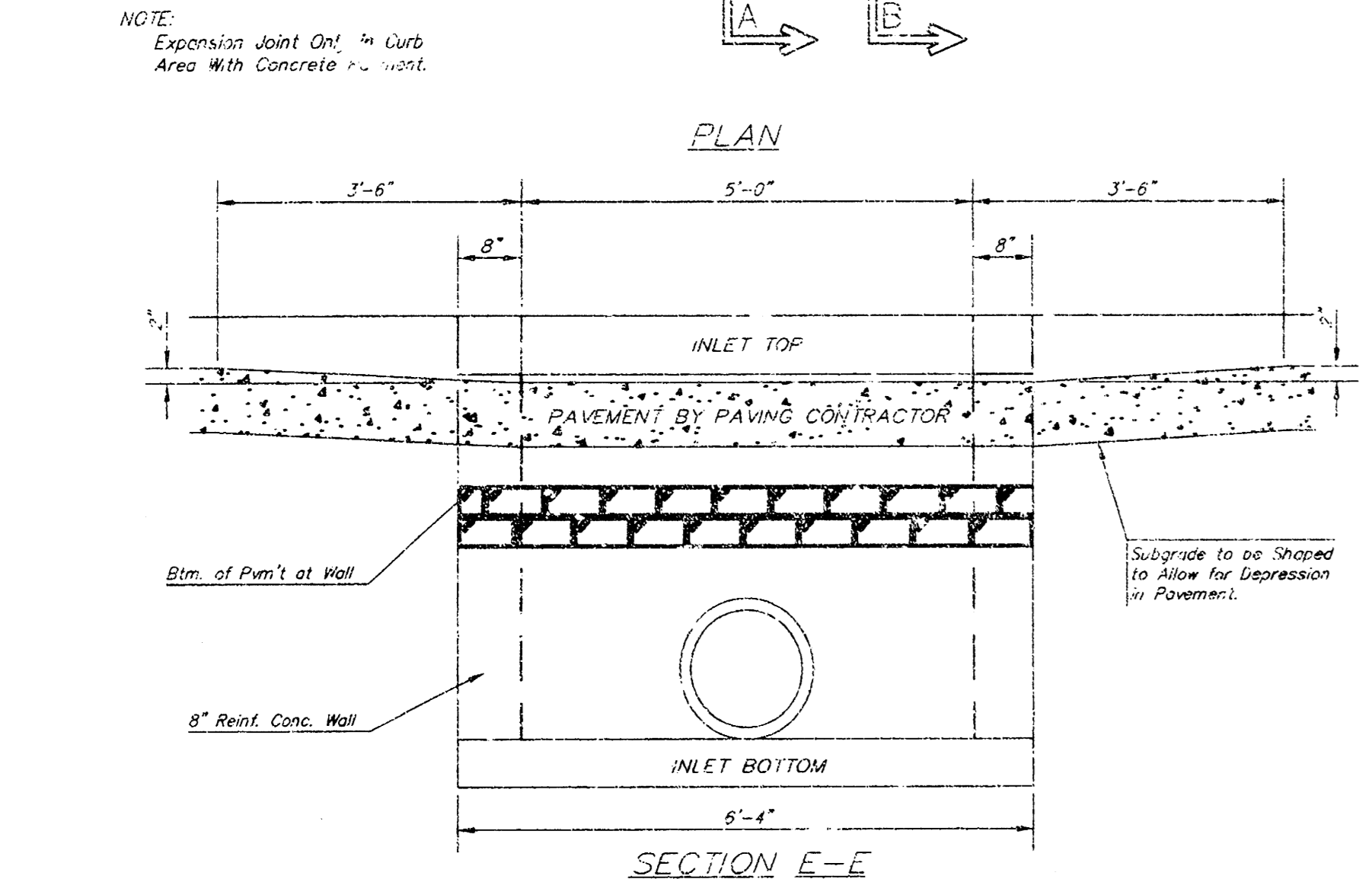


NOTE: Inlet for Reinforcing shall be Spaced on 6" Max. Centers. Inlet Lids Shall be Notched Out as Indicated to Facilitate Construction of Curb.

NOTE: Concrete Taps to be Installed on thin mortar cushion to insure full support along brick walls. Concrete taps may be cast in place or precast. Concrete used for joint construction shall be concrete pavement mix with air entrainment.



MANHOLE RING AND COVER
Weight = 180 LBS.
*See City of Wichita Standard Manhole Ring and Cover Lateral Shear for Cover Details to Be Used with this Frame.

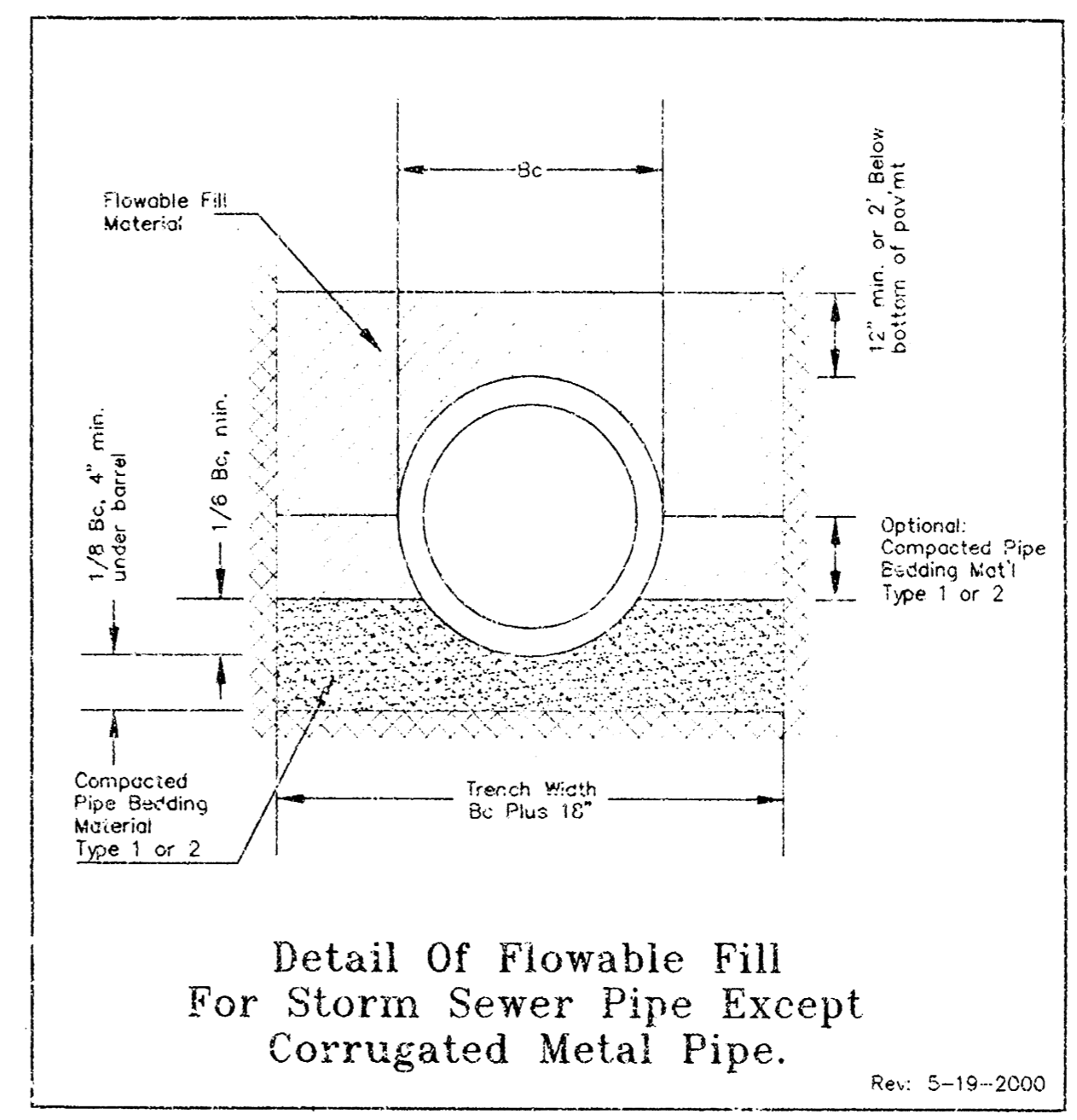
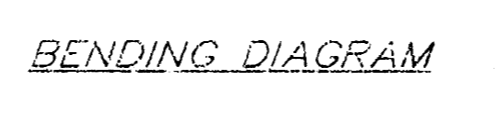


W	PRE-CAST TOP SIZE	PIPE SIZE	QTY. NO. CONC.
4'-1"	3'-4" x 6'-4" x 7'-0"	24" x 30"	0.832
5'-4"	4'-8" x 8'-4" x 7'-0"	24" x 30"	0.832
6'-8"	5'-0" x 8'-4" x 7'-0"	24" x 30"	0.832
7'-4"	5'-4" x 8'-4" x 7'-0"	24" x 30"	0.832
8'-4"	5'-8" x 8'-4" x 7'-0"	24" x 30"	0.832

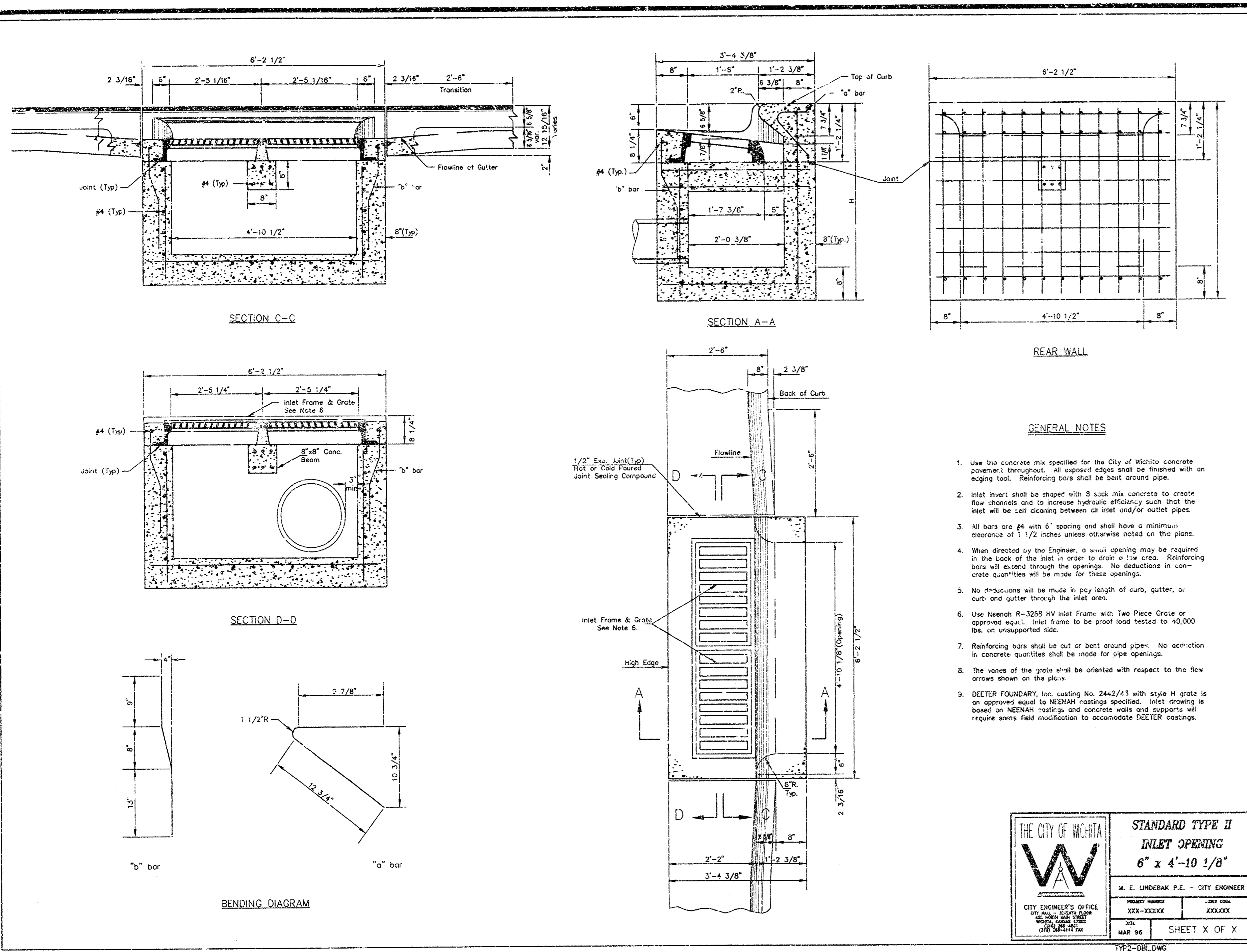
MARK	SIZE	NO.	LENGTH	NO.	LENGTH	NO.	LENGTH	NO.	LENGTH	NO.	LENGTH
1	#4	12	8'-0"	2	8'-0"	2	8'-0"	2	8'-0"	2	8'-0"
2	#4	12	8'-0"	2	8'-0"	2	8'-0"	2	8'-0"	2	8'-0"
3	#4	12	8'-0"	2	8'-0"	2	8'-0"	2	8'-0"	2	8'-0"
4	#4	12	8'-0"	2	8'-0"	2	8'-0"	2	8'-0"	2	8'-0"
5	#4	12	8'-0"	2	8'-0"	2	8'-0"	2	8'-0"	2	8'-0"
6	#4	12	8'-0"	2	8'-0"	2	8'-0"	2	8'-0"	2	8'-0"
7	#4	12	8'-0"	2	8'-0"	2	8'-0"	2	8'-0"	2	8'-0"
8	#4	12	8'-0"	2	8'-0"	2	8'-0"	2	8'-0"	2	8'-0"
9	#4	12	8'-0"	2	8'-0"	2	8'-0"	2	8'-0"	2	8'-0"
10	#4	12	8'-0"	2	8'-0"	2	8'-0"	2	8'-0"	2	8'-0"
11	#4	12	8'-0"	2	8'-0"	2	8'-0"	2	8'-0"	2	8'-0"
12	#4	12	8'-0"	2	8'-0"	2	8'-0"	2	8'-0"	2	8'-0"
13	#4	12	8'-0"	2	8'-0"	2	8'-0"	2	8'-0"	2	8'-0"
14	#4	12	8'-0"	2	8'-0"	2	8'-0"	2	8'-0"	2	8'-0"
15	#4	12	8'-0"	2	8'-0"	2	8'-0"	2	8'-0"	2	8'-0"
16	#4	12	8'-0"	2	8'-0"	2	8'-0"	2	8'-0"	2	8'-0"
17	#4	12	8'-0"	2	8'-0"	2	8'-0"	2	8'-0"	2	8'-0"
18	#4	12	8'-0"	2	8'-0"	2	8'-0"	2	8'-0"	2	8'-0"
19	#4	12	8'-0"	2	8'-0"	2	8'-0"	2	8'-0"	2	8'-0"
20	#4	12	8'-0"	2	8'-0"	2	8'-0"	2	8'-0"	2	8'-0"
21	#4	12	8'-0"	2	8'-0"	2	8'-0"	2	8'-0"	2	8'-0"
22	#4	12	8'-0"	2	8'-0"	2	8'-0"	2	8'-0"	2	8'-0"
23	#4	12	8'-0"	2	8'-0"	2	8'-0"	2	8'-0"	2	8'-0"
24	#4	12	8'-0"	2	8'-0"	2	8'-0"	2	8'-0"	2	8'-0"
25	#4	12	8'-0"	2	8'-0"	2	8'-0"	2	8'-0"	2	8'-0"
26	#4	12	8'-0"	2	8'-0"	2	8'-0"	2	8'-0"	2	8'-0"
27	#4	12	8'-0"	2	8'-0"	2	8'-0"	2	8'-0"	2	8'-0"
28	#4	12	8'-0"	2	8'-0"	2	8'-0"	2	8'-0"	2	8'-0"
29	#4	12	8'-0"	2	8'-0"	2	8'-0"	2	8'-0"	2	8'-0"
30	#4	12	8'-0"	2	8'-0"	2	8'-0"	2	8'-0"	2	8'-0"
31	#4	12	8'-0"	2	8'-0"	2	8'-0"	2	8'-0"	2	8'-0"
32	#4	12	8'-0"	2	8'-0"	2	8'-0"	2	8'-0"	2	8'-0"
33	#4	12	8'-0"	2	8'-0"	2	8'-0"	2	8'-0"	2	8'-0"
34	#4	12	8'-0"	2	8'-0"	2	8'-0"	2	8'-0"	2	8'-0"
35	#4	12	8'-0"	2	8'-0"	2	8'-0"	2	8'-0"	2	8'-0"
36	#4	12	8'-0"	2	8'-0"	2	8'-0"	2	8'-0"	2	8'-0"
37	#4	12	8'-0"	2	8'-0"	2	8'-0"	2	8'-0"	2	8'-0"
38	#4	12	8'-0"	2	8'-0"	2	8'-0"	2	8'-0"	2	8'-0"
39	#4	12	8'-0"	2	8'-0"	2	8'-0"	2	8'-0"	2	8'-0"
40	#4	12	8'-0"	2	8'-0"	2	8'-0"	2	8'-0"	2	8'-0"
41	#4	12	8'-0"	2	8'-0"	2	8'-0"	2	8'-0"	2	8'-0"
42	#4	12	8'-0"	2	8'-0"	2	8'-0"	2	8'-0"	2	8'-0"
43	#4	12	8'-0"	2	8'-0"	2	8'-0"	2	8'-0"	2	8'-0"
44	#4	12	8'-0"	2	8'-0"	2	8'-0"	2	8'-0"	2	8'-0"
45	#4	12	8'-0"	2	8'-0"	2	8'-0"	2	8'-0"	2	8'-0"
46	#4	12	8'-0"	2	8'-0"	2	8'-0"	2	8'-0"	2	8'-0"
47	#4	12	8'-0"	2	8'-0"	2	8'-0"	2	8'-0"	2	8'-0"
48	#4	12	8'-0"	2	8'-0"	2	8'-0"	2	8'-0"	2	8'-0"
49	#4	12	8'-0"	2	8'-0"	2	8'-0"	2	8'-0"	2	8'-0"
50	#4	12	8'-0"	2	8'-0"	2	8'-0"	2	8'-0"	2	8'-0"
51	#4	12	8'-0"	2	8'-0"	2	8'-0"	2	8'-0"	2	8'-0"
52	#4	12	8'-0"	2	8'-0"	2	8'-0"	2	8'-0"	2	8'-0"
53	#4	12	8'-0"	2	8'-0"	2	8'-0"	2	8'-0"	2	8'-0"
54	#4	12	8'-0"	2	8'-0"	2	8'-0"	2	8'-0"	2	8'-0"
55	#4	12	8'-0"	2	8'-0"	2	8'-0"	2	8'-0"	2	8'-0"
56	#4	12	8'-0"	2	8'-0"	2	8'-0"	2	8'-0"	2	8'-0"
57	#4	12	8'-0"	2	8'-0"	2	8'-0"	2	8'-0"	2	8'-0"
58	#4	12	8'-0"	2	8'-0"	2	8'-0"	2	8'-0"	2	8'-0"
59	#4	12	8'-0"	2	8'-0"	2	8'-0"	2	8'-0"	2	8'-0"
60	#4	12	8'-0"	2	8'-0"	2	8'-0"	2	8'-0"	2	8'-0"
61	#4	12	8'-0"	2	8'-0"	2	8'-0"	2	8'-0"	2	8'-0"
62	#4	12	8'-0"	2	8'-0"	2	8'-0"	2	8'-0"	2	8'-0"
63	#4	12	8'-0"	2	8'-0"	2	8'-0"	2	8'-0"	2	8'-0"
64	#4	12	8'-0"	2	8'-0"	2	8'-0"	2	8'-0"	2	8'-0"
65	#4	12	8'-0"	2	8'-0"	2	8'-0"	2	8'-0"	2	8'-0"
66	#4	12	8'-0"	2	8'-0"	2	8'-0"	2	8'-0"	2	8'-0"
67	#4	12	8'-0"	2	8'-0"	2	8'-0"	2	8'-0"	2	8'-0"
68	#4	12	8'-0"	2	8'-0"	2	8'-0"	2	8'-0"	2	8'-0"
69	#4	12	8'-0"	2	8'-0"	2	8'-0"	2	8'-0"	2	8'-0"
70	#4	12	8'-0"	2	8'-0"	2	8'-0"	2	8'-0"	2	8'-0"
71	#4	12	8'-0"	2	8'-0"	2	8'-0"	2	8'-0"	2	8'-0"
72	#4	12	8'-0"	2	8'-0"	2	8'-0"	2	8'-0"	2	8'-0"
73	#4	12	8'-0"	2	8'-0"	2	8'-0"	2	8'-0"	2	8'-0"
74	#4	12	8'-0"	2	8'-0"	2	8'-0"	2	8'-0"	2	8'-0"
75	#4	12	8'-0"	2	8'-0"	2	8'-0"	2	8'-0"	2	8'-0"
76	#4	12	8'-0"	2	8'-0"	2	8'-0"	2	8'-0"	2	8'-0"
77	#4	12	8'-0"	2	8'-0"	2	8'-0"	2	8'-0"	2	8'-0"
78	#4	12	8'-0"	2	8'-0"	2	8'-0"	2	8'-0"	2	8'-0"
79	#4	12	8'-0"	2	8'-0"	2	8'-0"	2	8'-0"	2	8'-0"
80	#4	12	8'-0"	2	8'-0"	2	8'-0"	2	8'-0"	2	8'-0"
81	#4	12	8'-0"	2	8'-0"	2	8'-0"	2	8'-0"	2	8'-0"
82	#4	12	8'-0"	2	8'-0"	2	8'-0"	2	8'-0"	2	8'-0"
83	#4	12	8'-0"	2	8'-0"	2	8'-0"	2	8'-0"	2	8'-0"
84	#4	12	8'-0"	2	8'-0"	2	8'-0"	2	8'-0"	2	8'-0"
85	#4	12	8'-0"	2	8'-0"	2	8'-0"	2	8'-0"	2	8'-0"
86	#4	12	8'-0"	2	8'-0"	2	8'-0"	2	8'-0"	2	8'-0"
87	#4	12	8'-0"	2	8'-0"	2	8'-0"	2	8'-0"	2	8'-0"
88	#4	12	8'-0"	2	8'-0"	2	8'-0"	2	8'-0"	2	8'-0"
89	#4	12	8'-0"	2	8'-0"	2	8'-0"	2	8'-0"	2	8'-0"
90	#4	12	8'-0"	2	8'-0"	2	8'-0"	2	8'-0"	2	8'-0"
91	#4	12	8'-0"	2	8'-0"	2	8'-0"	2	8'-0"	2	8'-0"
92	#4	12	8'-0"	2	8'-0"	2	8'-0"	2	8'-0"	2	8'-0"
93	#4	12	8'-0"	2	8'-0"	2	8'-0"	2	8'-0"	2	8'-0"
94	#4	12	8'-0"	2	8'-0"	2	8'-0"	2	8'-0"	2	8'-0"
95	#4	12	8'-0"	2	8'-0"	2	8'-0"	2	8'-0"	2	8'-0"
96	#4	12	8'-0"	2	8'-0"	2	8'-0"	2	8'-0"	2	8'-0"
97	#4	12	8'-0"	2	8'-0"	2	8'-0"	2	8'-0"	2	8'-0"
98	#4	12	8'-0"	2	8'-0"	2	8'-0"	2	8'-0"	2	8'-0"
99	#4	12	8'-0"	2	8'-0"	2	8'-0"	2	8'-0"	2	8'-0"
100	#4	12	8'-0"	2	8'-0"	2	8'-0"	2	8'-0"	2	8'-0"

WALL REINFORCING

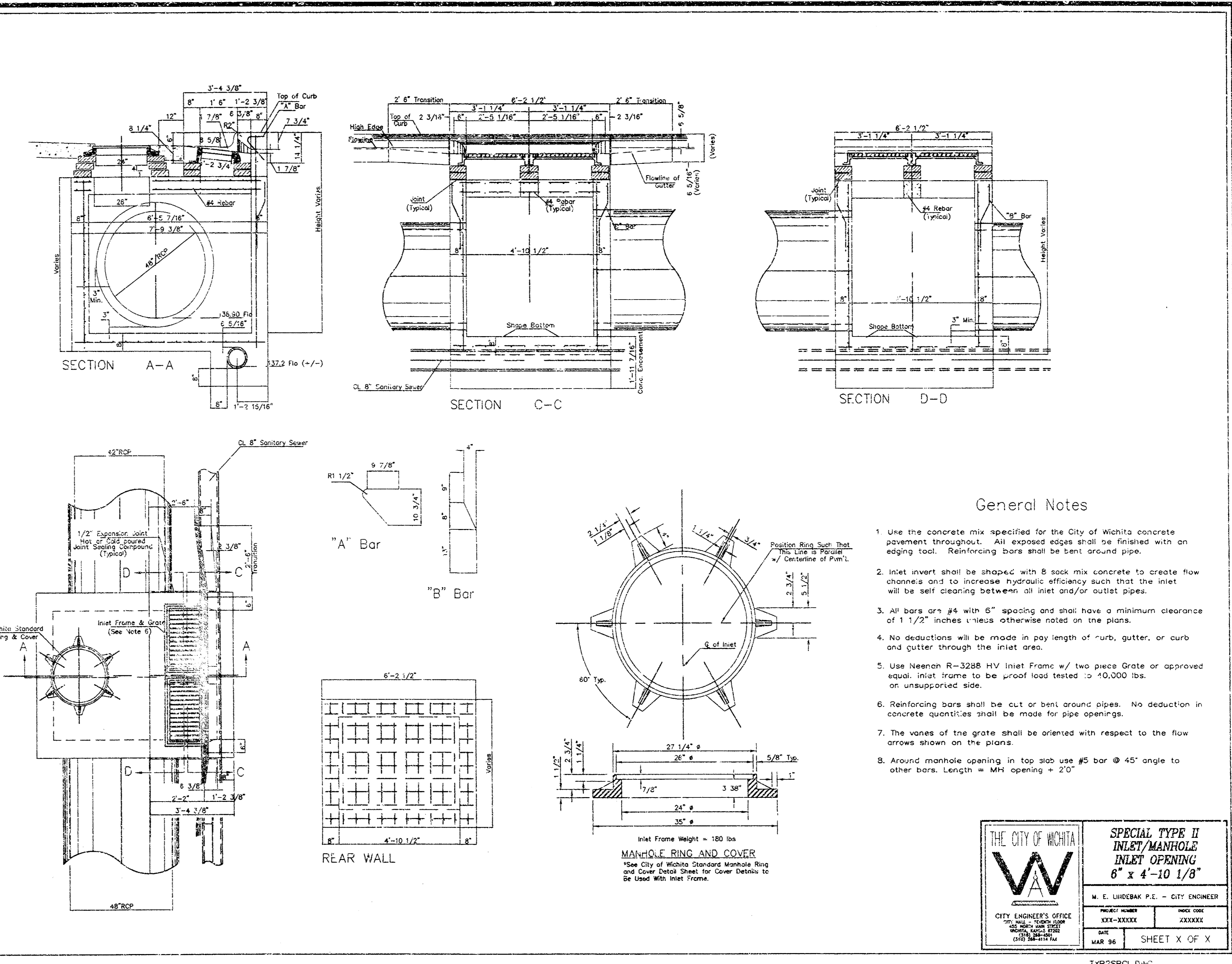
* Field Bend or Old Reinforcing as Requested for Clearance.
 (1) 4 (18" - 12") (18" - 21") ROUNDED DOWN TO NEAREST 0.5"
 (2) 4 - 3"



11/27/2004 02:25:29 PM



- GENERAL NOTES**
1. Use the concrete mix specified for the City of Wichita concrete pavement throughout. All exposed edges shall be finished with an edging tool. Reinforcing bars shall be bent around pipes.
 2. Inlet invert shall be sloped with 8 sack mix concrete to create flow channels and to increase hydraulic efficiency such that the inlet will be self-cleaning between all inlet and/or outlet pipes.
 3. All bars are #4 with 6" spacing and shall have a minimum clearance of 1 1/2" inches unless otherwise noted on the plans.
 4. When directed by the Engineer, a man opening may be required in the back of the inlet in order to drain a low area. Reinforcing bars will extend through the opening. No deductions in concrete quantities will be made for these openings.
 5. No reductions will be made in pay length of curb, gutter, or curb and gutter through the inlet area.
 6. Use Neenan R-3288 HV Inlet Frame with Two Piece Cover or approved equal. Inlet frame to be proof load tested to 40,000 lbs. on unsupported side.
 7. Reinforcing bars shall be cut or bent around pipes. No deduction in concrete quantities shall be made for pipe openings.
 8. The vanes of the grate shall be oriented with respect to the flow arrows shown on the plans.
 9. DEETER FOUNDRY, Inc. casting No. 2442/11 with style H grate is an approved equal to NEWMAN castings specified. Inlet openings is based on NEWMAN castings and concrete pipe supports will require some face modification to accommodate DEETER castings.



- General Notes**
1. Use the concrete mix specified for the City of Wichita concrete pavement throughout. All exposed edges shall be finished with an edging tool. Reinforcing bars shall be bent around pipes.
 2. Inlet invert shall be sloped with 8 sack mix concrete to create flow channels and to increase hydraulic efficiency such that the inlet will be self-cleaning between all inlet and/or outlet pipes.
 3. All bars are #4 with 6" spacing and shall have a minimum clearance of 1 1/2" inches unless otherwise noted on the plans.
 4. No deductions will be made in pay length of curb, gutter, or curb and gutter through the inlet area.
 5. Use Neenan R-3288 HV Inlet Frame w/ two piece Grate or approved equal. Inlet frame to be proof load tested to 40,000 lbs. on unsupported side.
 6. Reinforcing bars shall be cut or bent around pipes. No deduction in concrete quantities shall be made for pipe openings.
 7. The vanes of the grate shall be oriented with respect to the flow arrows shown on the plans.
 8. Around manhole opening in top slab use #5 bar @ 45° angle to other bars. Length = MHI opening + 2'0"

OTARGET T-1943
 SWS CONSTRUCTION FOR ASHLEY TOWNE CENTRE ADDITION
 CITY OF WICHITA PRIVATE PROJECT NO. 1410PFS (607661)

STORM SEWER DETAILS

Kimley-Horn and Associates, Inc.
 2003 N. W. 10th St., Suite 1000
 Lawrence, KS 66044
 (785) 843-2000

APPROVED
 M. E. LINDBERGH P.E. - CITY ENGINEER
 DATE: 11/17/03

APPROVED
 DATE: 11/17/03

PROJECT NO. 068033000
 DRAWING NAME 20CSTM-sws
 SHEET NUMBER C4.5

