

# STORMWATER SEWER TO SERVE

## TEXAS ROADHOUSE

### 6707 WEST KELLOGG

#### Project Number

#### 1472 PPS (607861)

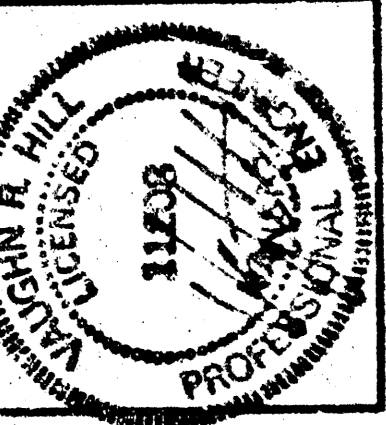
### CITY OF WICHITA, KANSAS

#### Jim Armour, P. E., City Engineer

04129

**TEXAS**  
roadhouse  
6707 WEST KELLOGG DRIVE  
WICHITA, KANSAS 67209  
WICHITA, SEDGWICK CO., KANSAS

The Roberts Group, PSC  
238 Southland Drive  
Suite C  
Wichita, KS 67203  
(620) 274-2008



REVISIONS  
 △ MOVED ELEC. SERVICE & ADDED NEW PIP PER ELEC. CO. LETTER 7/28/04.  
 △ REVISED SW PLANS PER CITY COMMENTS.

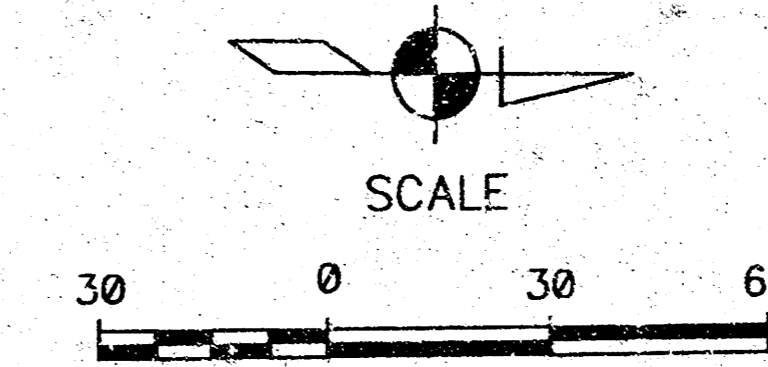
DRAWN BY TRG  
 CHECKED BY RWC  
 DATE JULY 23, 2004  
 ● PERMIT  
 ○ BID  
 CONSTRUCTION  
 AS-BUILT

SHEET TITLE  
COVER SHEET

SHEET NUMBER

**SW-1**

SHEET: 1 OF 3  
TRH - WICHITA, KANSAS



**SHEET INDEX**

1. Cover Sheet
2. Plan & Profile
3. Inlet Details

\*+\* Cut is sidewalk.  
NE Corner, Lot 5  
The Dugan Centre  
Elev.=118.63 (City Datum)

**GENERAL NOTES**

1. Contractor will be required to provide notice to utility companies a minimum of twenty-four (24) hours prior to any excavation, as follows:
  - Southwestern Bell Telephone Co. 154 N. Broadway Wichita, Kansas 67202 Bob Alley 316-268-2245
  - Kansas Gas & Electric Co. 1500 E. Central Wichita, Kansas 67214 Randy Truitt 316-261-6251 (Electric)
  - Wichita Water & Sewer Dept. 8th Floor, City Hall 455 N. Main St. Wichita, Kansas 67202 Bill Perkins 316-268-4555
  - Aquila Network Gas 1611 S. Hoover Wichita, Kansas 67209 Calvin Briggs 316-941-7233
  - Wichita Sewer Maintenance Div. Water & Water Pollution Control Dept. 8th Floor, City Hall 455 N. Main St. Wichita, Kansas 67202 Steve Linsley 316-268-4624
  - Cox Communications 701 E. Douglas Wichita, Kansas 67202 Brian Ring 316-262-4270 x.169
  - Kansas Gas Service 1021 E. 26th North Wichita, Kansas 67219 Charlene Lawless 316-383-8600 or 316-832-3177
  - Kansas One Call 800-344-7233
  - Dig Safe 316-687-2470
  - Emergency 911

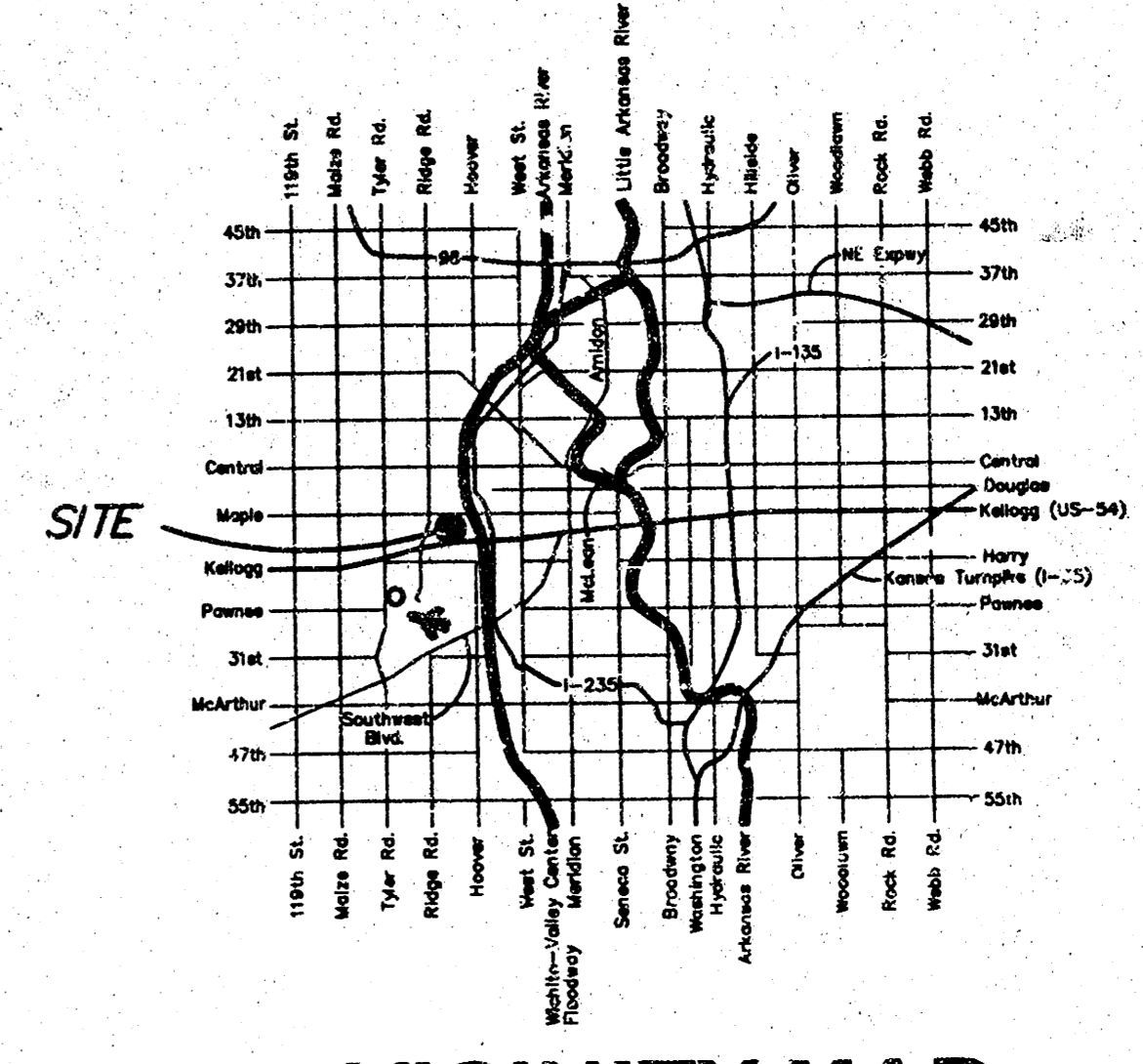
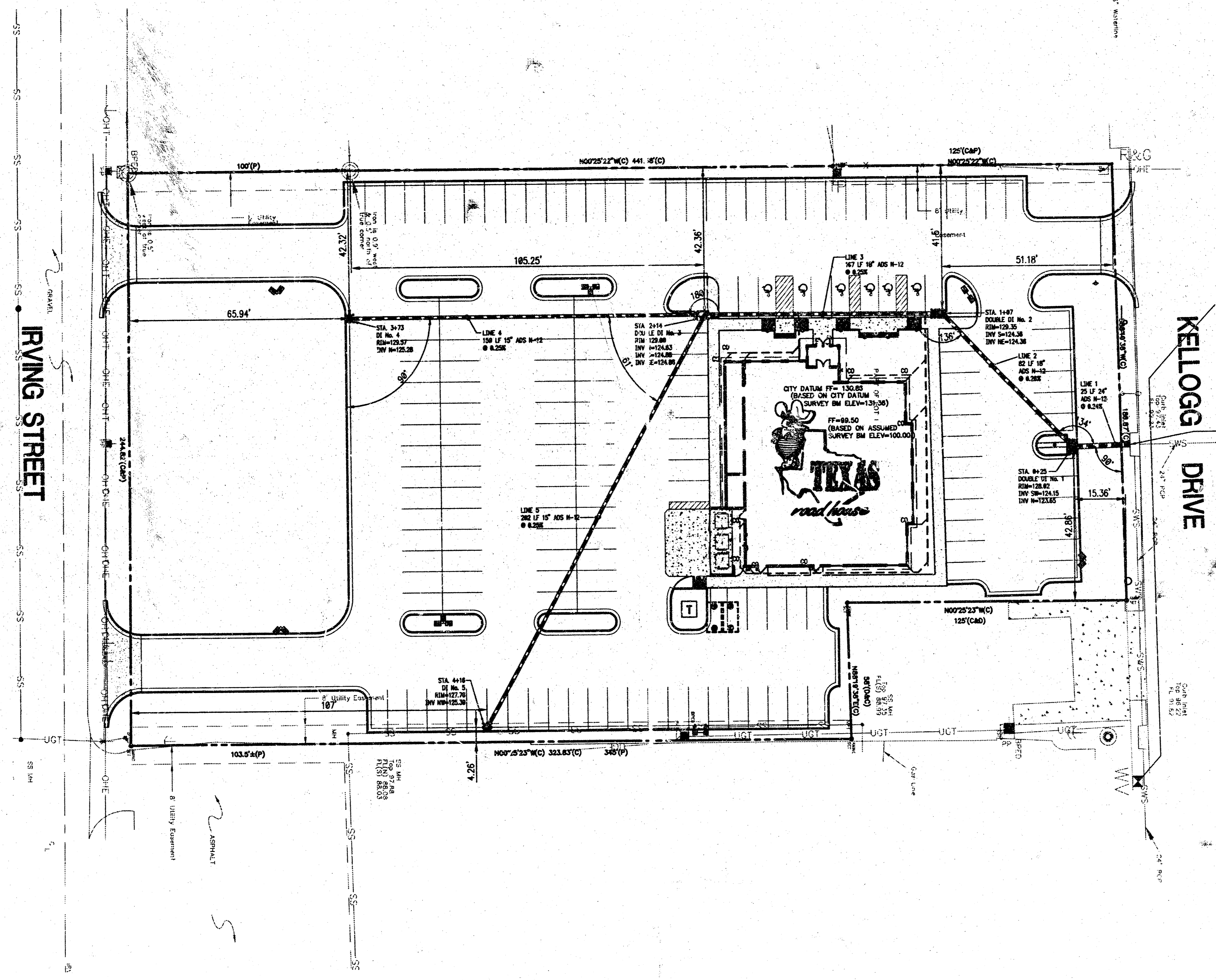
2. The Contractor must notify the following in case of an emergency.
3. All improvements shall be installed in accordance with City of Wichita, Kansas Standard Specifications for Sanitary Sewer Construction.
4. Contractor shall not start work on the project until the project inspector is assigned to the project and is present on the site. Any work done without inspection will be required to be uncovered for inspection.
5. Underground utility service lines and overhead utility pole lines are to be adjusted as necessary by others prior to construction, unless the plans specifically call for their locations as shown on the plans, represent the best information obtainable for design. Location information has been obtained from the various utility companies and is either from company record drawings or company-provided field locations. The Contractor will be required to work around existing utilities within the right-of-way which do not conflict with proposed construction.
6. The contractor shall be responsible for preserving property irons. The Contractor will be required to re-establish any property irons which are damaged or destroyed by his construction operations. Such irons shall be re-established by a licensed land surveyor in accordance with state law.
7. All areas disturbed by construction operations shall be seeded with rye grass at a rate of 300 lbs/acre immediately following construction in that area. Ground shall be prepared per City of Wichita specifications prior to seeding.
8. Contractor shall verify the location of all utilities prior to beginning construction.

APPROVED AS NOTED  
BY CITY ENGINEER OF WICHITA

STORM SEWER *VRH 8/3/04*

**NOTE TO CONTRACTORS**

INSTALLATION, INSPECTION AND TESTING FOR THIS PROJECT IS TO BE PROVIDED BY A LICENSED CONSULTING ENGINEERING FIRM UNDER CONTRACT WITH THE OWNER/DEVELOPER. SAID INSPECTION TO BE IN ACCORDANCE WITH THE CITY OF WICHITA STANDARD CONSTRUCTION ENGINEERING PRACTICES AND CERTIFIED BY A LICENSED PROFESSIONAL ENGINEER. NO WORK SHALL BE PERFORMED IN DEDICATED EASEMENTS OR PUBLIC RIGHT-OF-WAY BY THE CONTRACTOR WITHOUT SUCH INSPECTION NOR SHALL ANY WORK BE COMMENCED WITHOUT WRITTEN AUTHORIZATION BY THE CITY ENGINEER. ALL CONSTRUCTION AND MATERIALS SHALL COMPLY WITH THE CITY OF WICHITA SPECIFICATIONS AND STANDARDS (ON FILE AND AVAILABLE IN THE CITY ENGINEER'S OFFICE.)



**VICINITY MAP**

**COVER SHEET**  
**PERMIT SET**

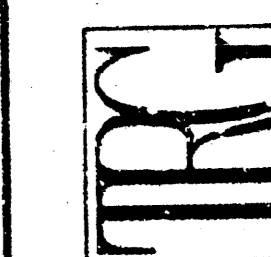
AS-BUILT 40F41C40 11-22-04

AUG 3 0 2004

TEXAS

road house  
6707 WEST WELLS DRIVE  
WICHITA, KANSAS 67209  
WICHITA, SEDGWICK CO., KANSAS

The Roberts Group, PSC  
218 Southland Drive  
Suite C  
Wichita, KS 67203  
(620) 276-2000



REVISIONS  
MOVED ELEC. SERVICE & ADDED NEW PP PER ELEC. CO. LETTER 7/28/04.  
REVISED SW PLANS PER CITY COMMENTS.

DRAWN BY TRG  
CHECKED BY RWC  
DATE JULY 23, 2004  
PERMIT  
BID  
CONSTRUCTION  
AS-BUILT

SHEET TITLE  
STORM SEWER  
PLAN & PROFILE

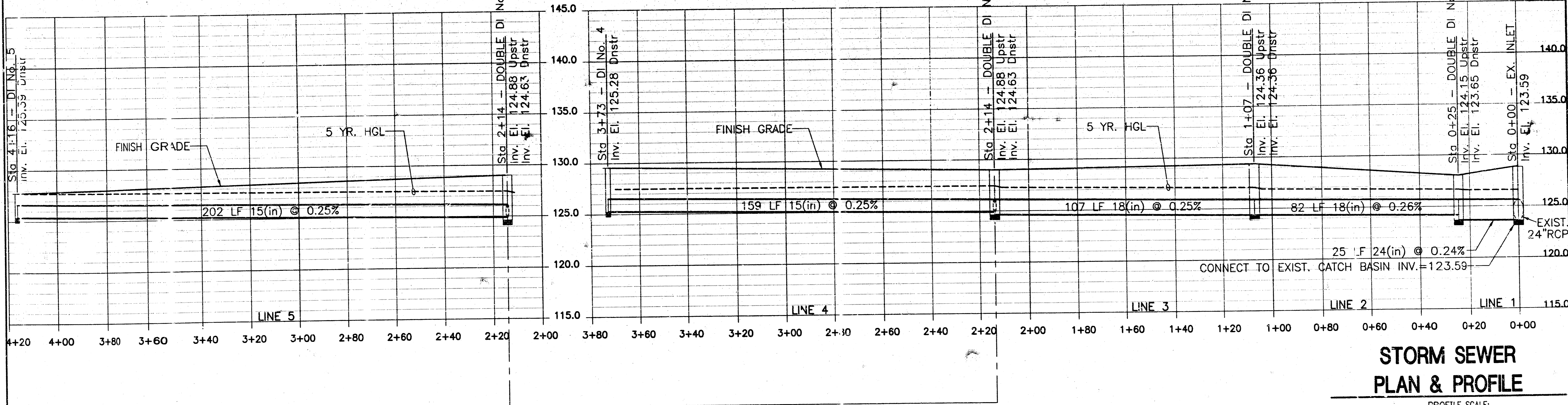
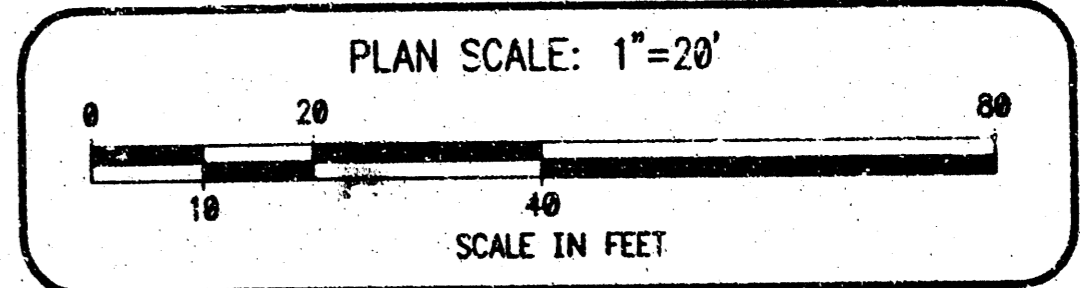
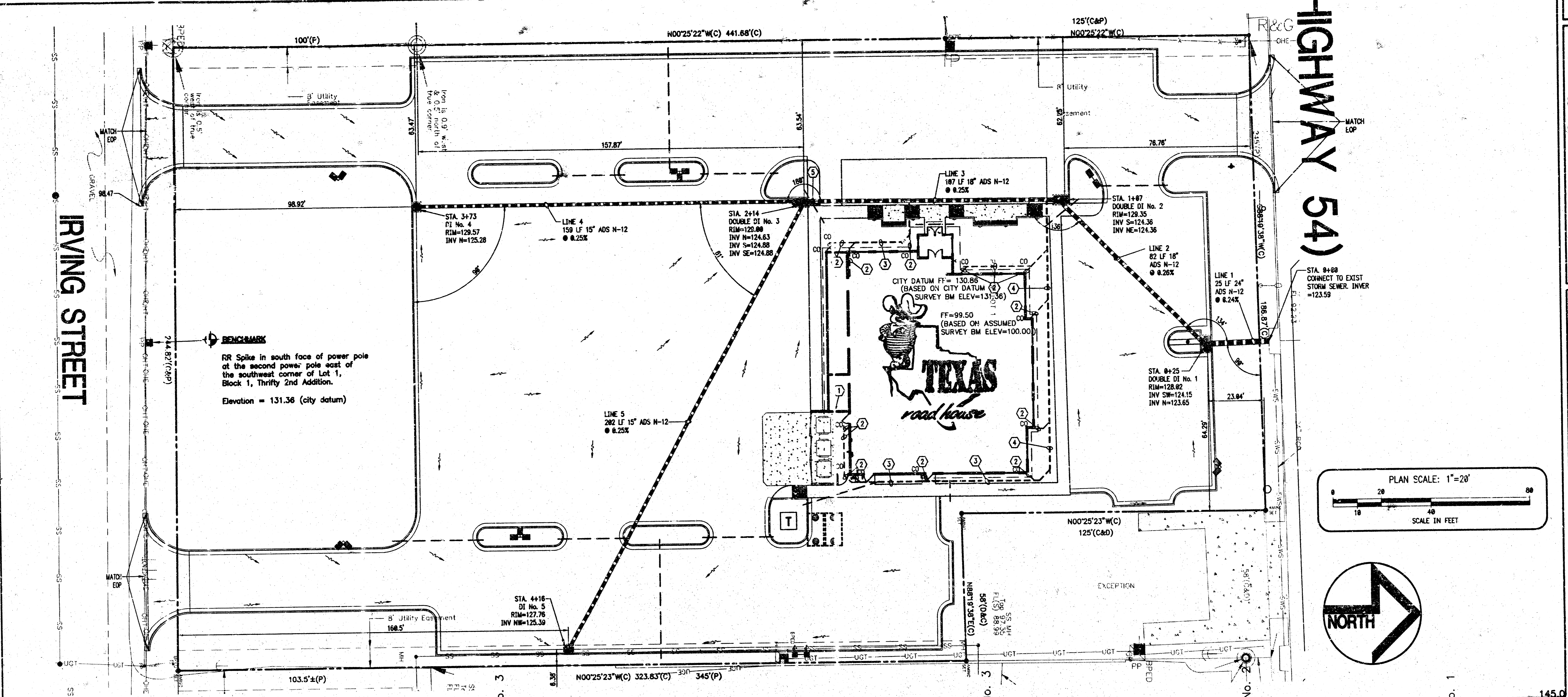
SHEET NUMBER

SW-1

SHEET: 2 OF 15  
TRG - WICHITA, KS AS

HIGHWAY 54

IRVING STREET



STORM SEWER  
PLAN & PROFILE

PROFILE SCALE:  
1" = 5' VERTICAL  
1" = 20' HORIZONTAL

PERMIT SET

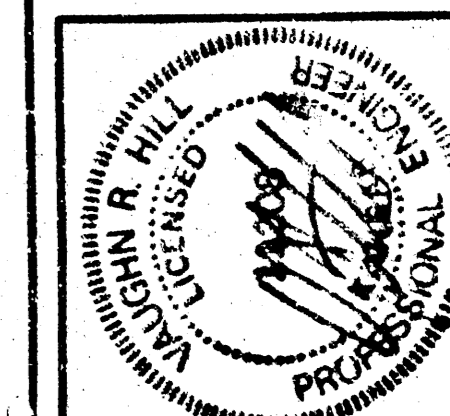
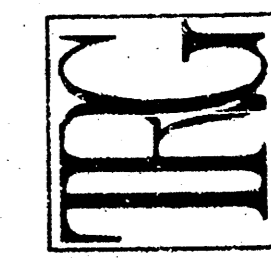
AS-BUILT NOTICED 11-22-04

G:\TXR\04128-00 Wichita, KS\4128.dwg

04129

**TEXAS**  
Road House  
6707 WEST KELLOGG DRIVE  
Wichita, Kansas 67209  
WICHITA, SEDGWICK CO., KANSAS

The Roberts Group, PSC  
238 Southland Drive  
Suite C  
Wichita, KS 67203  
(316) 271-2008

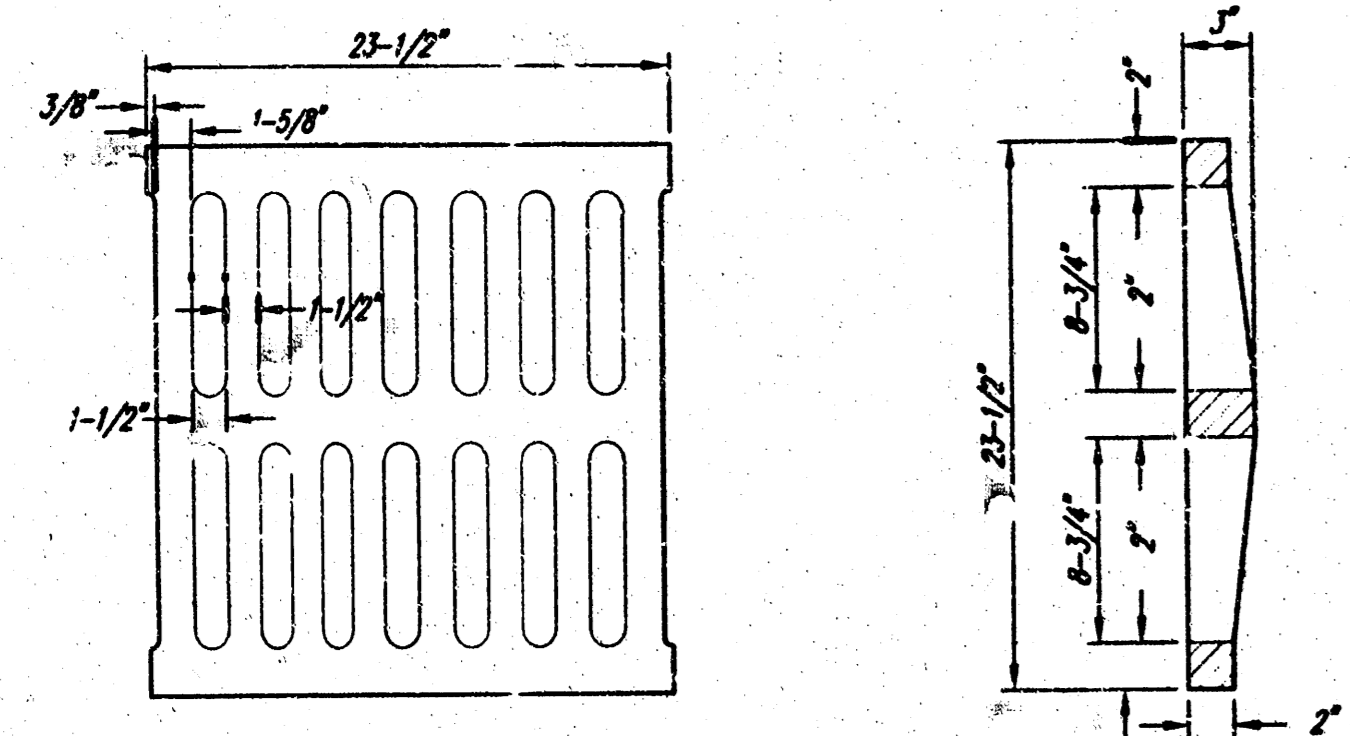
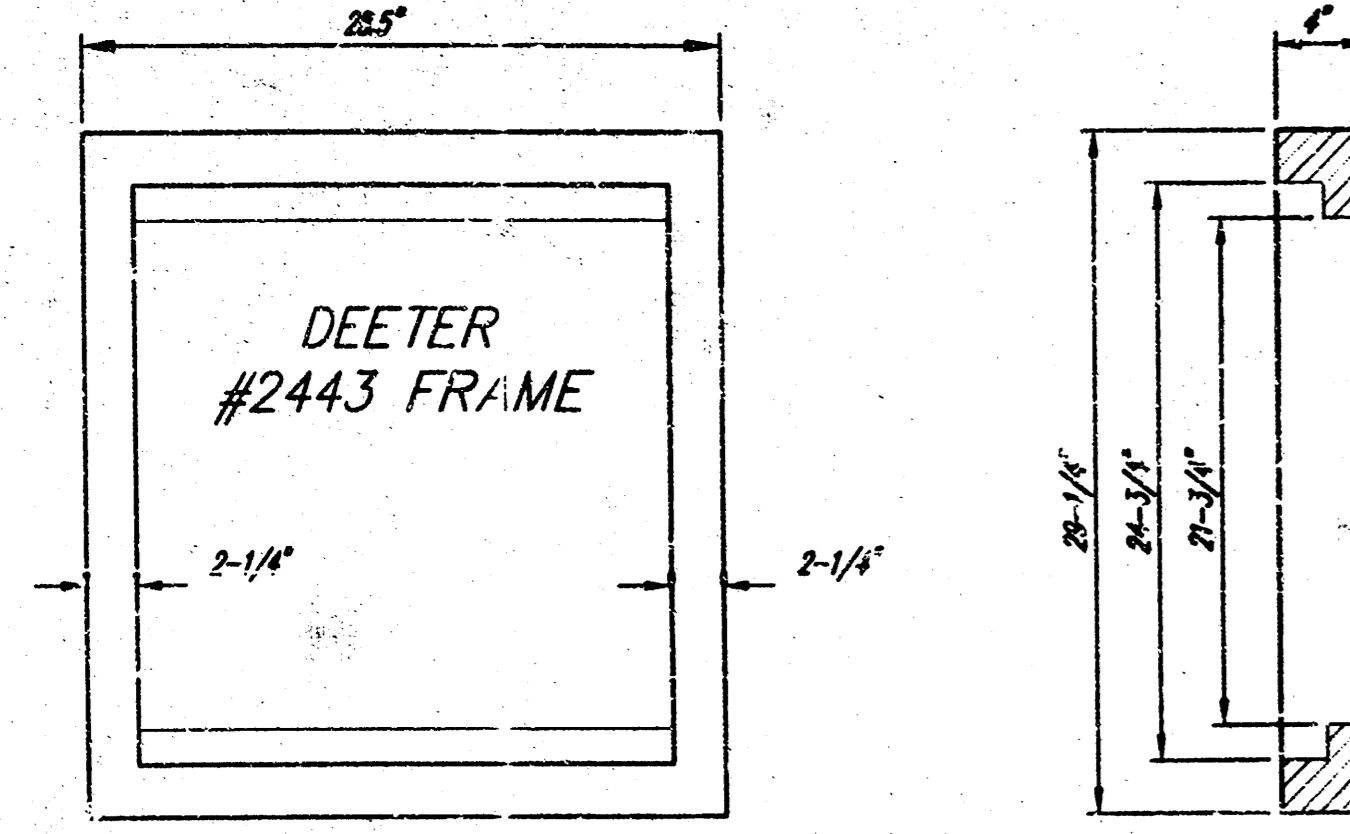


REVISIONS  
▲ MOVED ELEC. SERVICE & ADDED NEW PP PER ELEC. CO. LETTER 7/28/04.  
▲ REVISED SW PLANS PER CITY COMMENTS.

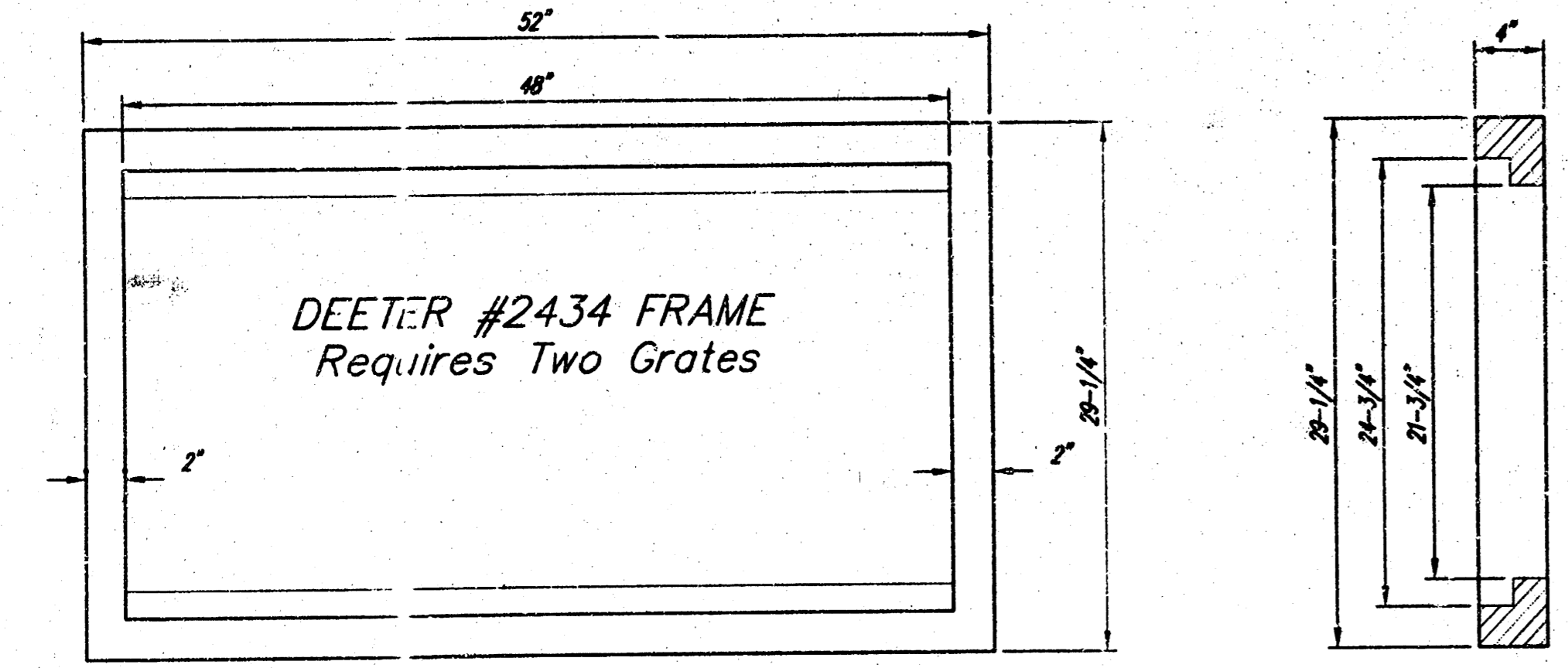
DRAWN BY  
TRG  
CHECKED BY  
RWC  
DATE  
JULY 23, 2004  
● PERMIT  
BID  
CONSTRUCTION  
AS-BUILT

SHEET TITLE  
DROP INLET DETAIL

SHEET NUMBER  
SW-3  
SHEET 3 OF 3  
TRH - WICHITA, KANSAS

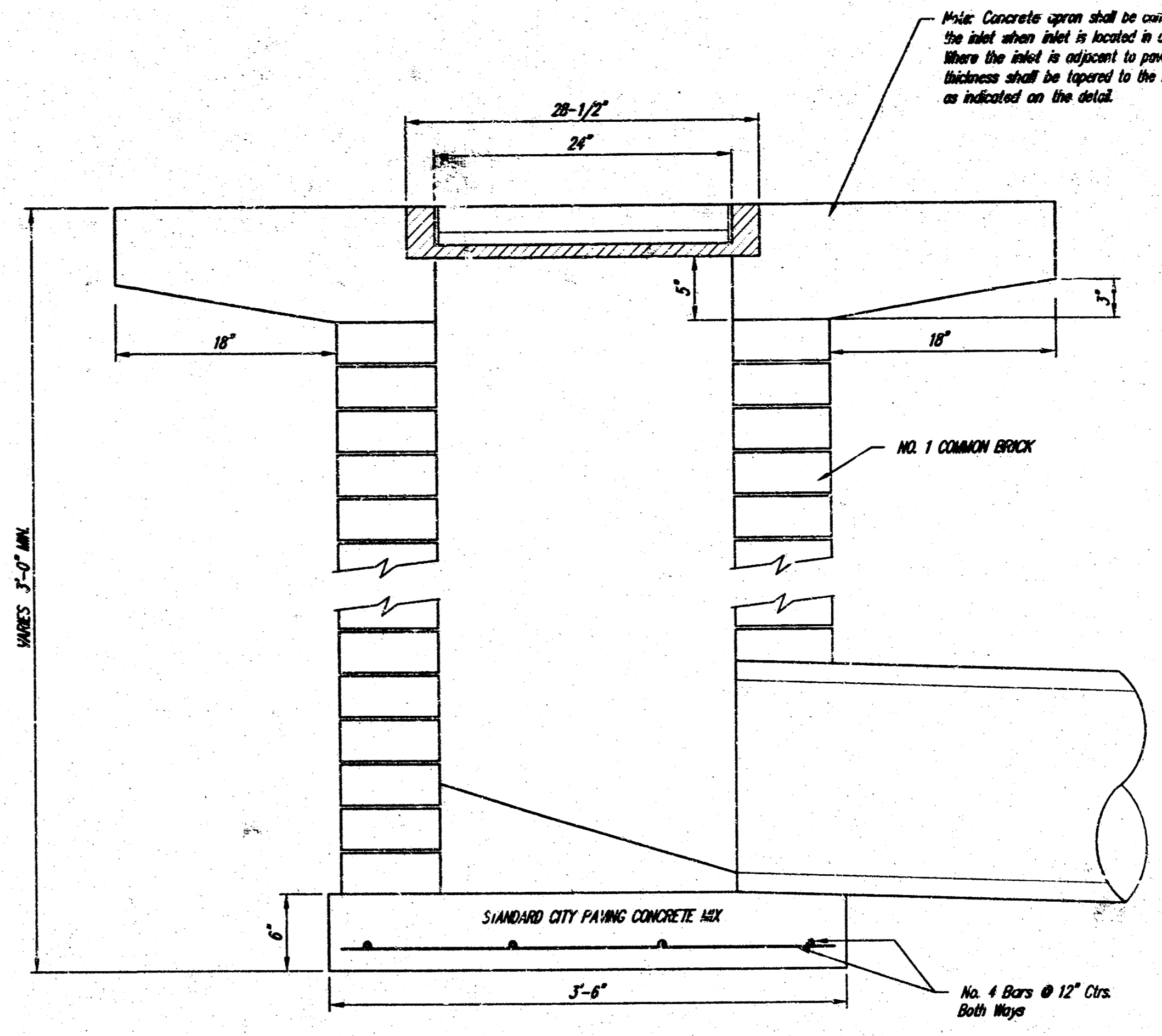
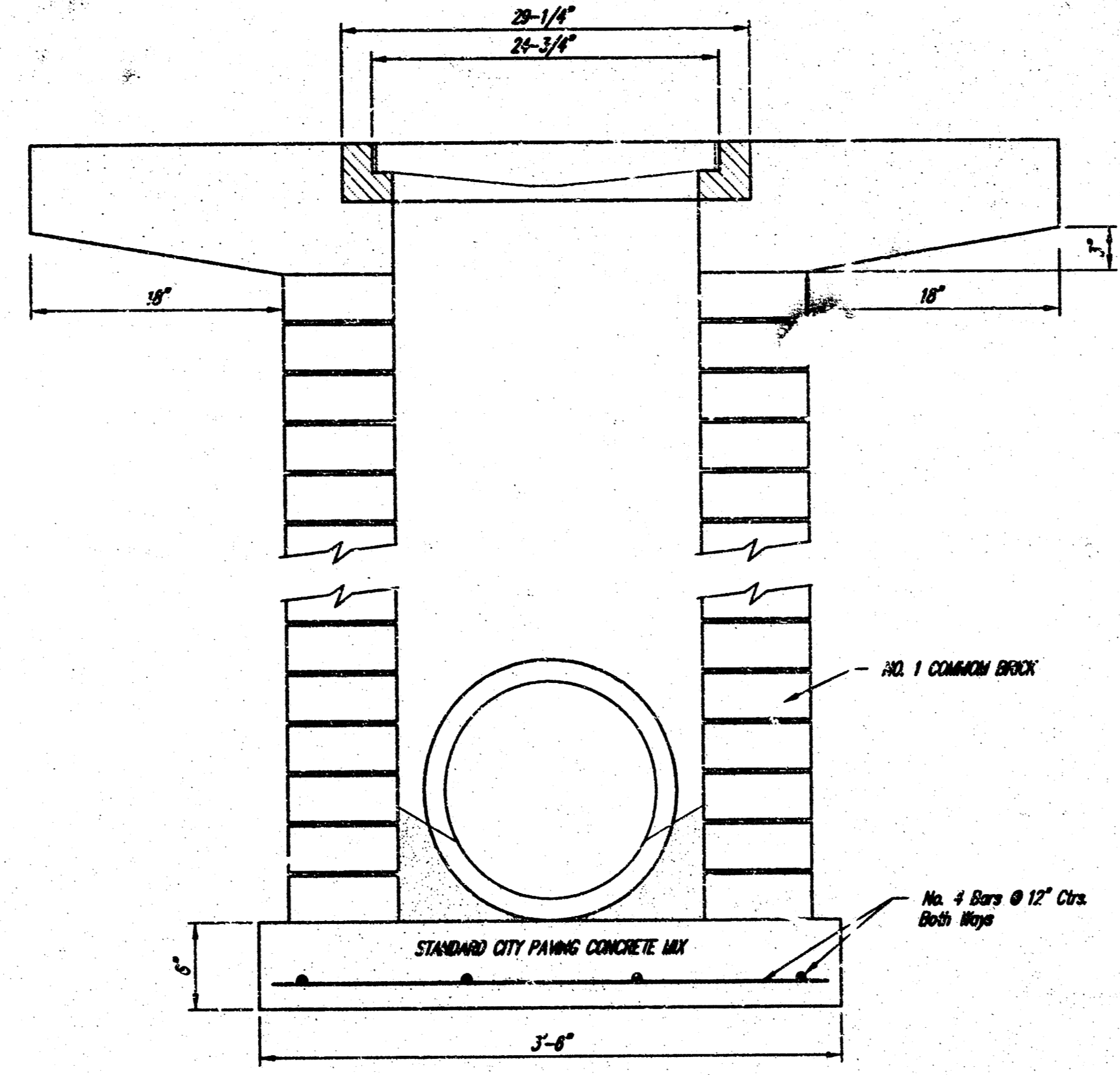


DEETER #2433 GRATE  
24" x 24" Frame and Grate Detail

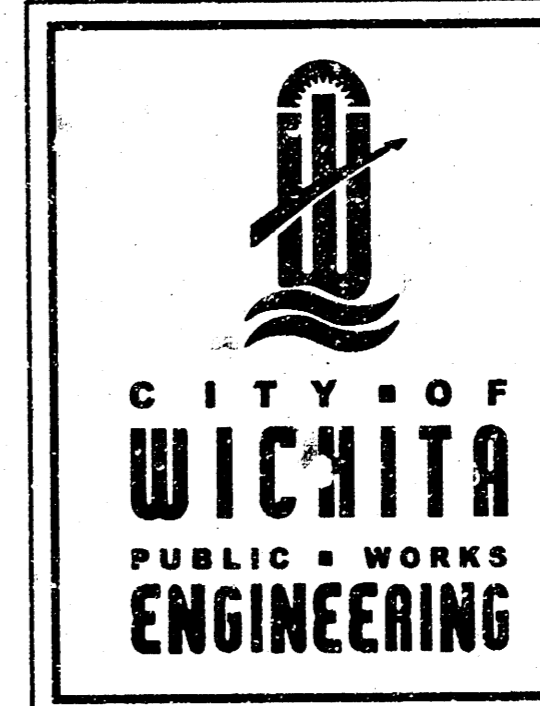
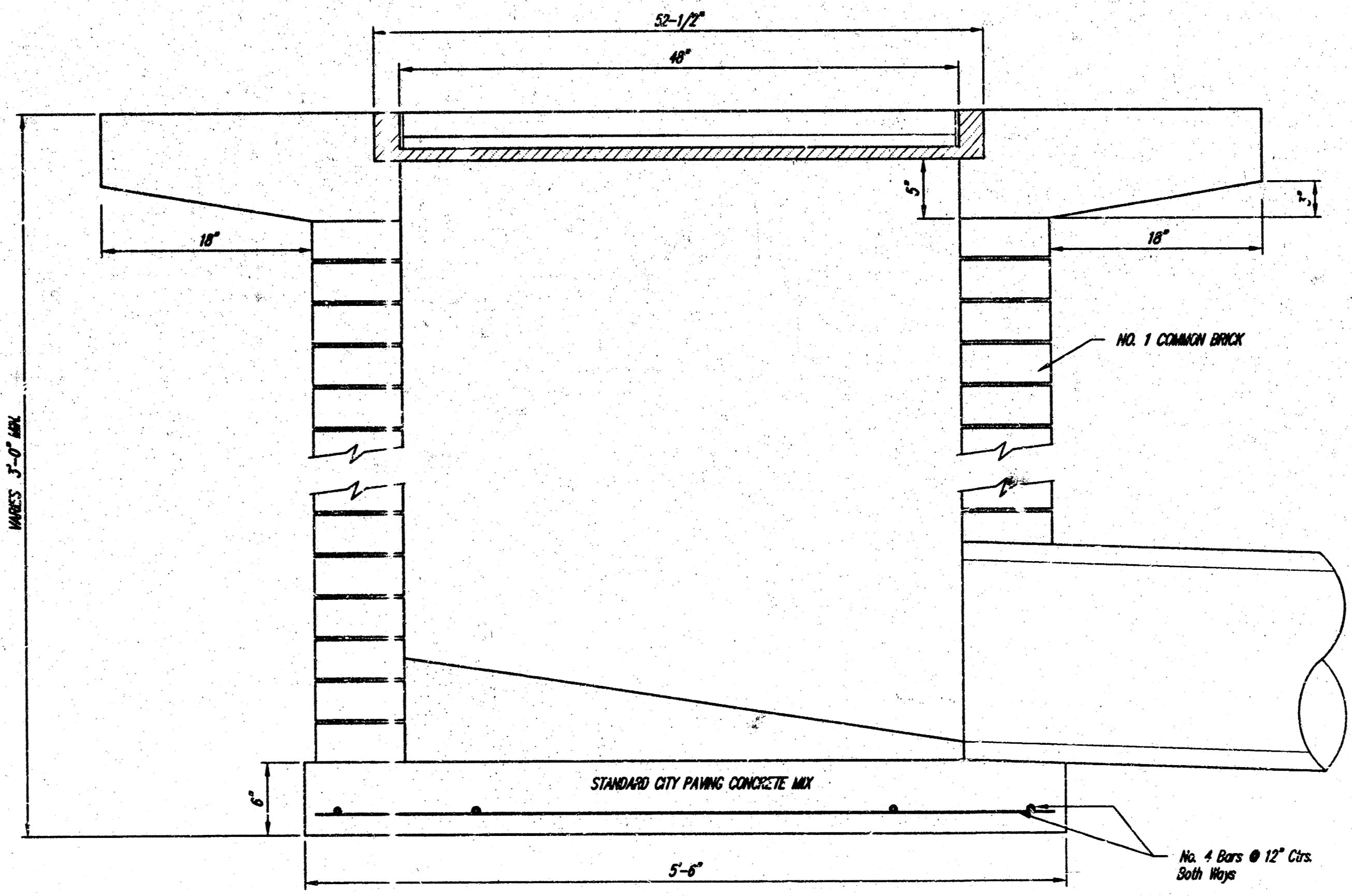


DEETER #2434 FRAME  
Requires Two Grates  
Double 24" x 24" Frame Detail

NOTE: Grates shall be imprinted on the top surface with "CITY OF WICHITA" using letters at least 1" in height. Other marking methods may be approved by the engineer.



Note: Concrete apron shall be constructed around the inlet where inlet is located in an exposed area. Where the inlet is adjacent to pavement, the pavement thickness shall be tapered to the inlet in 18 inches as indicated on the detail.



**DROP INLET**  
2' X 2 1/2' X 4'  
CITY ENGINEER  
JAMES L. ARMOUR, P.E., L.S.  
PROJECT NUMBER: \_\_\_\_\_ DATE: \_\_\_\_\_  
DCA NUMBER: \_\_\_\_\_ MM/YY  
CITY ENGINEER'S OFFICE  
CITY HALL - FIFTEENTH FLOOR  
455 NORTH MAIN STREET  
WICHITA, KANSAS 67202-1620  
(316) 268-4500  
(316) 268-4114 FAX

DROPINLET.DWG  
**DROP INLET DETAIL**  
PERMIT SET

11-22-04 AS-BUILT HOF LKED 10 00 01 00