

STORM SEWER TO SERVE Pawnee and Broadway

Lot 6, Block A Replat of Kincaid Park 1508 PPS (607861)

CITY OF WICHITA, KANSAS Jim Armour, P.E., Acting City Engineer

INDEX OF SHEETS

- 1 Cover Sheet
- 2 Plan and Profile Sheets
- 3 Detail

GENERAL NOTES

1. Contractor will be required to provide notice to utility companies a minimum of twenty-four (24) hours prior to any excavation, as follows:

Kansas One-Call	687-3430
-----------------	----------

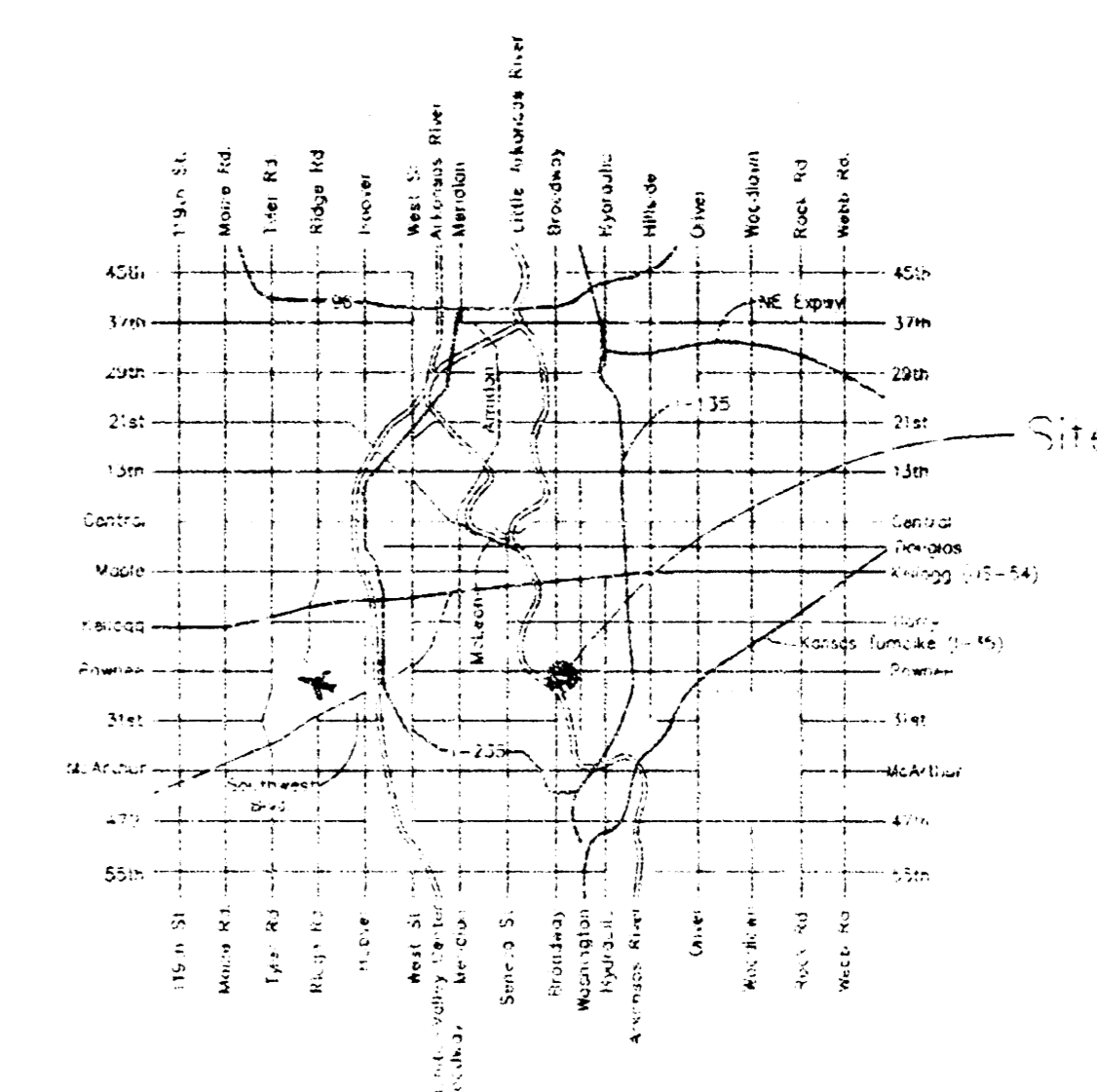
The Contractor must notify the following in case of an emergency:

Cablevision	262-4272
or	262-2661
Westar Energy	687-6600
	262-4800

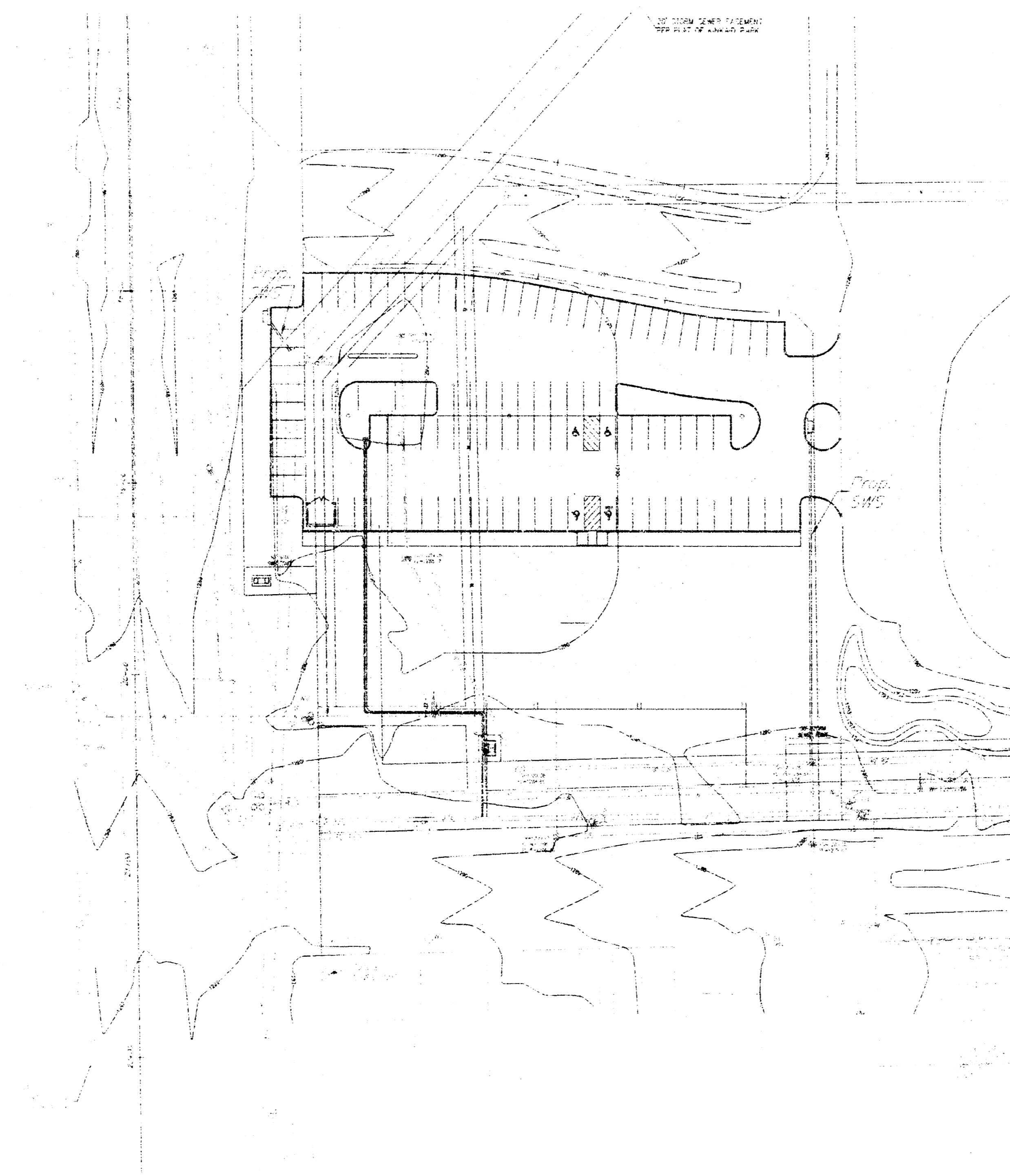
Southwestern Bell Telephone Company	1-800-347-1111
City of Wichita Water Department	268-4418
City of Wichita Sewer Department	268-4418
Kansas Gas Service	262-1844
or	800-316-7
2. Exist. utilities and their locations, as shown on the plans, represent the best information available for this project. Location information has been obtained from the various utility companies and is either from company records, drawings or company-provided field locations. The Contractor will be required to work around existing utilities which do not conflict with proposed construction.
3. The Contractor to verify utility locations prior to construction of this project.
4. Utility service and installation shall be coordinated with the respective utility owners. Contacts are:

Kansas Gas Service	James Stoltz	837-5122
Westar Energy	Russ Whitwood	262-4400

Wichita Water	Paul Bryant	268-4448
	Steve Palmer	268-4308
Southwestern Bell	Jim Toom	268-2754
Multimedia cablevision	Mark Anaya	262-4272
5. All lawn/lurf areas disturbed by construction or proposed improvements shall be restored with **seed**. All seeding work shall be in accordance with the City of Wichita standard specifications and the City of Wichita administration regulation No. AR78 which governs cleaning and replacement following construction. All costs for this work shall be subsidiary to the lump sum price bid for "Site Restoration."
6. Traffic affected by the construction of this project shall be handled in accordance with the latest edition of the Manual on Uniform Traffic Control Devices.
7. All commercial signs to be moved by others prior to construction. Properties within the project may have underground irrigation systems (lawn sprinklers) which conflict with the new construction. Contractor shall remove such components as needed during construction of the project. The irrigation system shall be reinstated in like kind before project completion. Any irrigation system modifications required because of project improvements shall be coordinated with the property owner. Portions of underground irrigation systems not in conflict with construction shall be protected from damage and shall remain in place. All work related to underground irrigation/sprinklers shall be subsidiary to Site Restoration.
9. Cuts made to paved surfaces on public property will be repaired by the City's contractor and charged against the owner's applicant. Unit repair rates are available from the City of 268-4418. A surcharge may be applicable. Call 268-4418 for details. Repair costs to be paid prior to release of water service if water service is affected.



LOCATION MAP



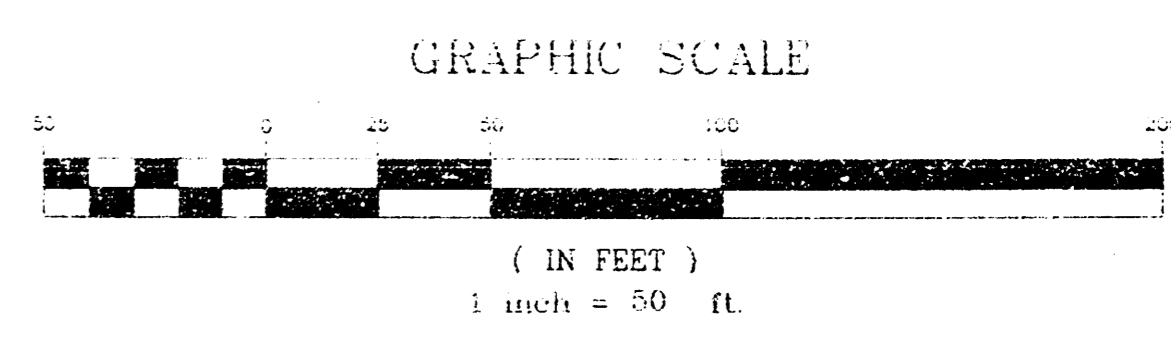
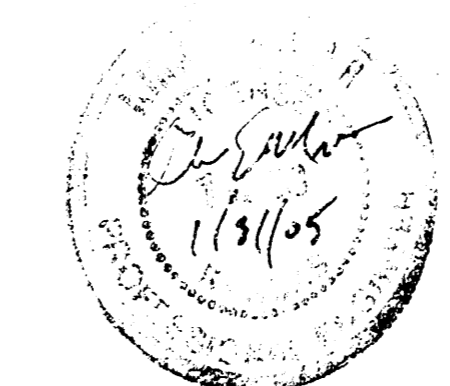
APPROVED AS BUILT

City Engineer Office **VRH 2/1/05**

NOTE TO CONTRACTORS

Installation, inspection and testing for this project is to be done by a Licensed Consulting Engineering firm under contract with the City Engineer. Said inspection to be in accordance with the City of Wichita standard construction engineering practices and codes and a Licensed Professional Engineer. No work shall be performed in dedicated easements or public right-of-way by the Contractor without such inspection nor shall any work be commenced without written authorization by the City Engineer. All construction and materials shall comply with the City of Wichita Specifications and standards on file and available at the City Engineer's Office.

AS-BUILT
3/15/05
K.E. Miller
City Engineer
Signed

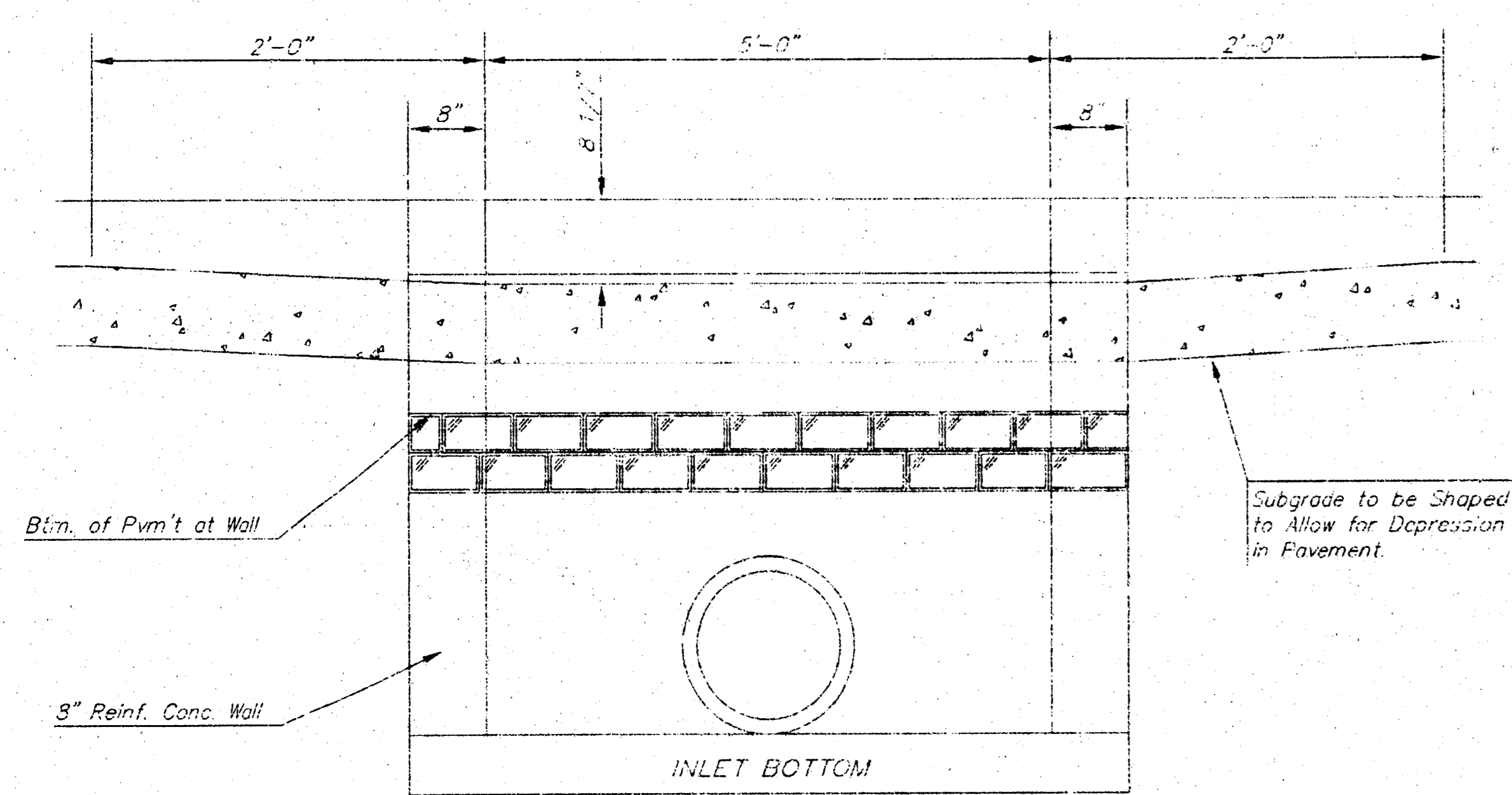
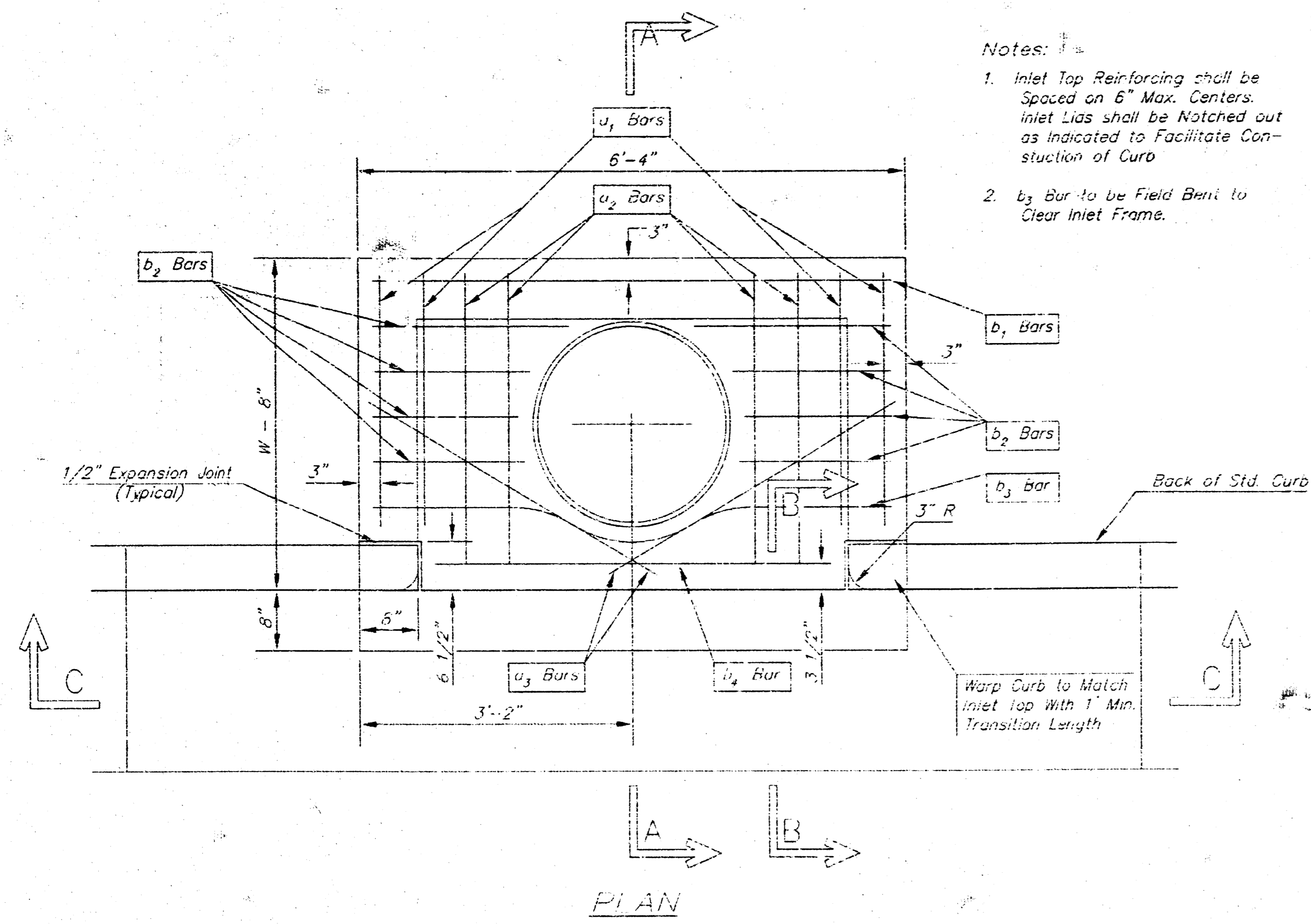


Elevation
Checked on Top of Curb
at Corner of Main & Broadway
at Home Taping Station
Elevation=46.40(Old Datum)

kemiller
engineering

516 S. Market,
Wichita, KS 67202

316/264-0242



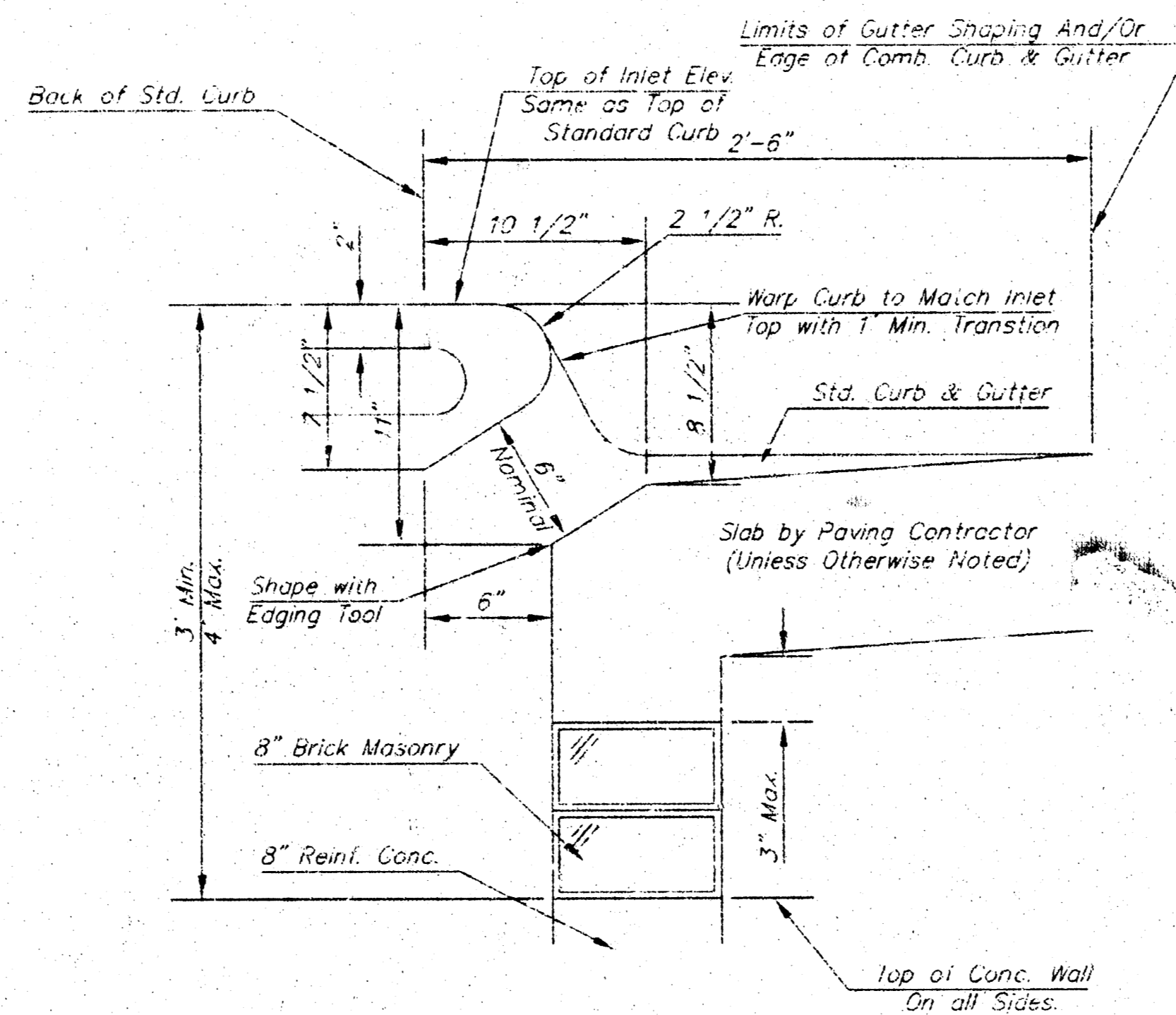
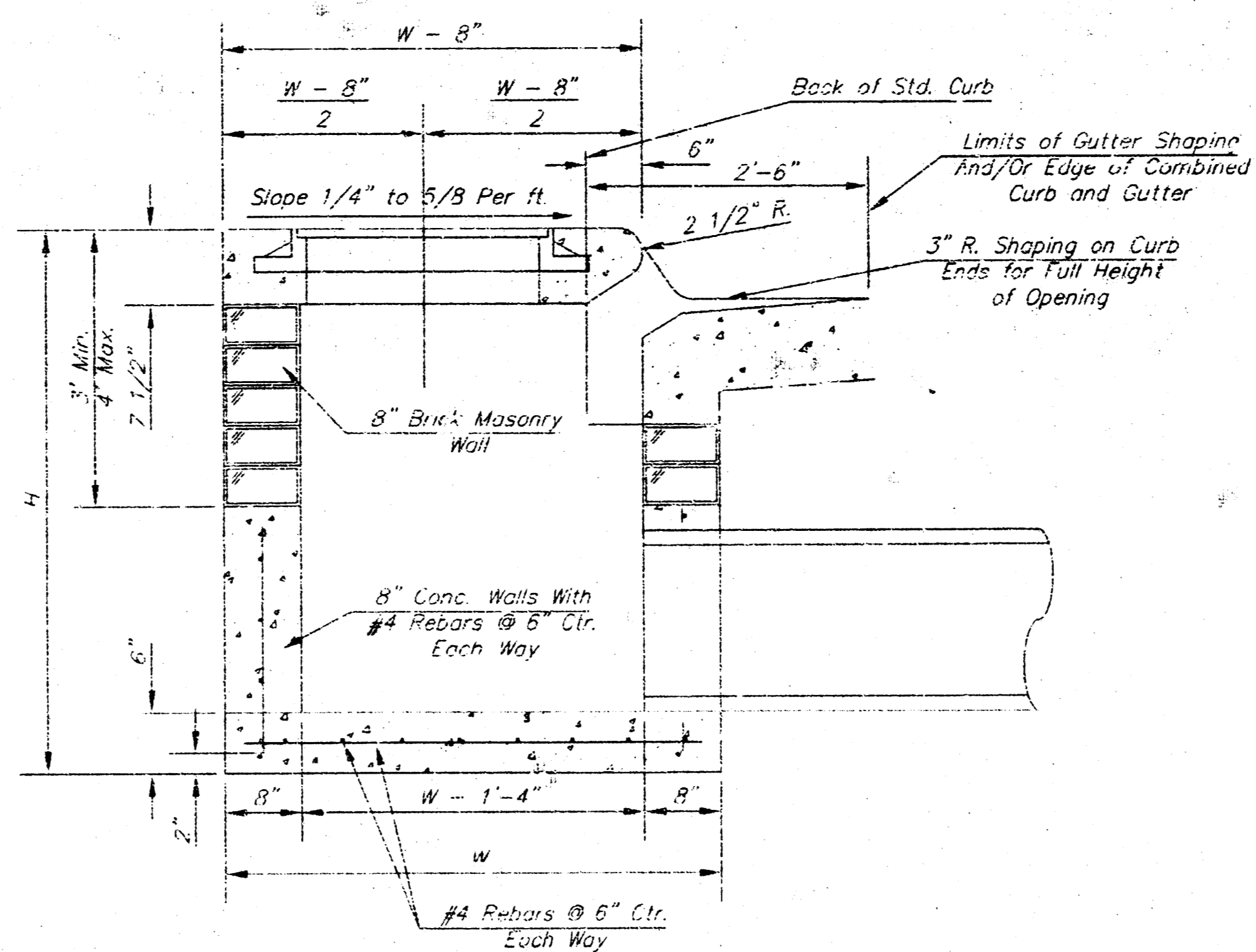
STEEL SCHEDULE

BAR	a ₁	a ₂	a ₃	b ₁	b ₂	b ₃	b ₄	b ₅	b ₆	WT. LBS.		
NUMBER	4	4	2	1	3	5	7	9	6	1		
SIZE	#4	#4	#4	#4	#4	#4	#4	#4	#6			
LENGTH	W=4'-4"	5'-7"	6'-7"	4'-0"	6'-1"	-	-	-	1'-9"	6'-2"	4'-8"	60±
	W=5'-4"	7'-7"	8'-7"	5'-0"	6'-1"	-	-	-	1'-9"	6'-2"	4'-8"	81±
	W=6'-4"	9'-7"	10'-7"	6'-0"	6'-1"	-	-	-	1'-9"	6'-2"	4'-8"	101±
	W=7'-4"	11'-7"	12'-7"	7'-0"	6'-1"	-	-	-	1'-9"	6'-2"	4'-8"	121±
W=8'-4"	13'-7"	14'-7"	8'-0"	6'-1"	-	-	-	1'-9"	6'-2"	4'-8"	141±	

Note: a₃ Bars to be Placed Approx. 2" Below Top of Inlet Cover.

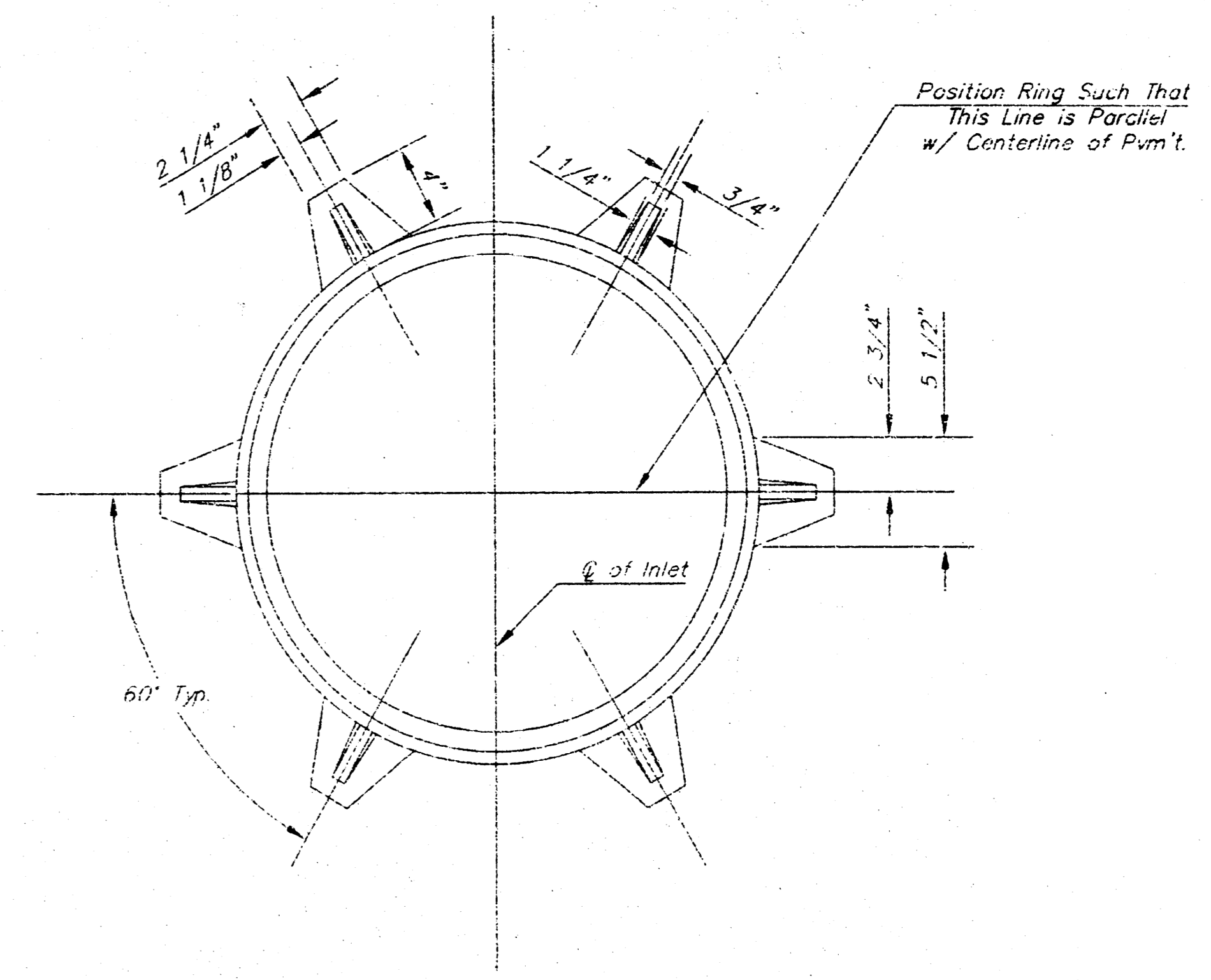
STANDARD CURB INLET PRECAST TOPS

W	PRE-CAST TOP SIZE	PIPE SIZE	CU. YD. CONC.
4'-4"	3'-8" 6'-4" 7 1/2"	24" & SMALLER	0.55±
5'-4"	4'-8" 6'-4" 7 1/2"	24" & 30"	0.51±
6'-4"	5'-8" 6'-4" 7 1/2"	36" & 42"	0.64±
7'-4"	6'-8" 6'-4" 7 1/2"	48" & 54"	0.77±
8'-4"	7'-8" 6'-4" 7 1/2"	60" & 66"	0.90±



GENERAL NOTES

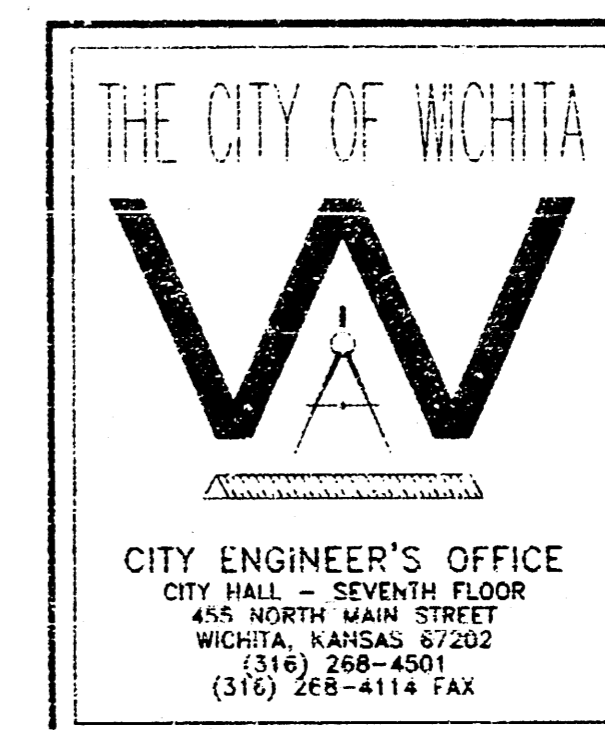
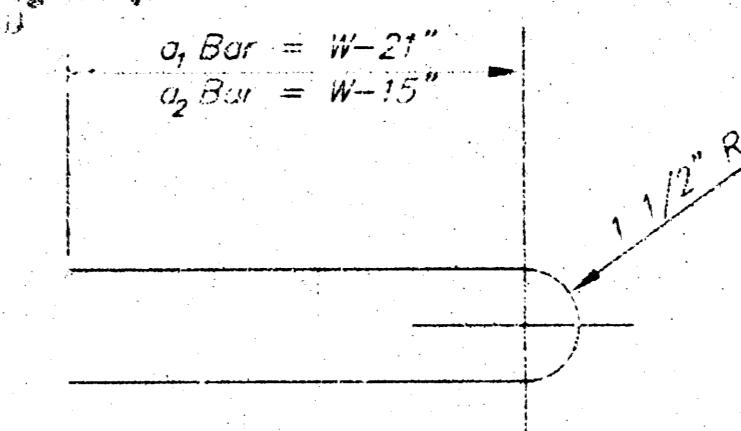
- Concrete tops to be installed on thin mortar cushion to insure full support along brick walls. Concrete tops may be cast in place or precast. Concrete used for inlet construction shall be concrete pavement mix.
- Contractor shall have the option of constructing 8" brick masonry walls between the concrete inlet base and top on this inlet when W=6'-4" and H=7'-0" or less.
- Inlet invert shall be shaped with 8 sack sand mix concrete to create flow channels and to increase hydraulic efficiency such that the inlet will be self cleaning between all inlet and/or outlet pipes.
- The ends of all pipes installed in inlets shall be cut off flush with the inside face of the inlet wall.



MANHOLE RING AND COVER

*See City of Wichita Standard Manhole Ring and Cover Detail Sheet for Cover Details to be Used with Inlet Frame.

BENDING DIAGRAM



STANDARD TYPE 1 CURB INLET

OPENING = 6" x 5'-0"

JIM ARMOUR P.E. - ACTING CITY ENGINEER

PROJECT NUMBER
607853

INDEX CODE
1508 PPS

DATE
MAR 96

SHEET 3 OF 3