

STORM SEWERS IN WOODLANDS EAST

PROJECT NO. 468-76-245-81158-000-000-001

S. W. S. NO. 235

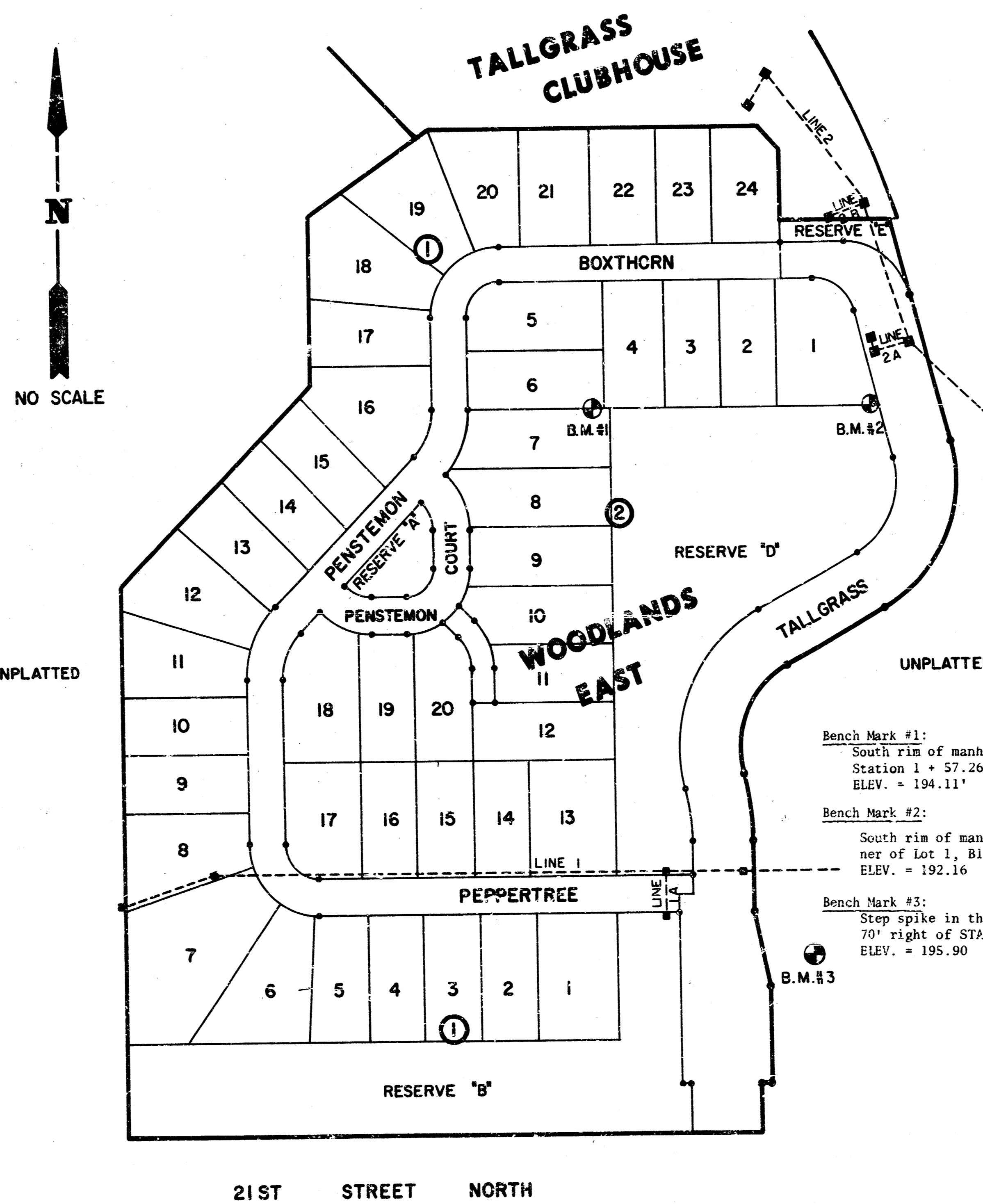
CITY OF WICHITA, KANSAS
R. W. BRUGGEMAN, CITY ENGINEER
JANUARY 1982

GENERAL NOTES

- The Contractor shall be responsible for preserving property irons. The Contractor shall be required to re-establish any property irons which are damaged or destroyed by his construction operations. Such irons shall be re-established by a licensed land surveyor or a licensed professional engineer in accordance with state laws.
- The tops of inlets and manholes as noted on the plans may vary so as to meet proposed top of curb elevations or pavement elevations. The Field Engineer shall locate inlets and manholes with referenced to proposed paving plans of the pertinent streets (available through Van Doren-Hazard-Stallings).
- All metal pipes shall be helically corrugated pipe fully coated both inside and outside. The coating may be bituminous or polymeric as specified in AASHTO Designation: M246-78, Type B. All such coated corrugated pipe shall be smooth flow pipes for sizes 24" diameter and larger. All connections for these fully coated or fully paved and fully coated pipes shall be of fairly watertight construction using hugger type coupler or equal.
- All concrete shall be Standard Paving Mix unless otherwise noted.
- The riprap for this project shall be type 3. The type 3 riprap shall be 12" riprap. The rock for riprap and gravel protection shall be hard, dense, durable and shall be reasonably well graded. The size range of rock used shall be a maximum of one cubic foot and a minimum of 1 1/2".
- The Contractor shall avoid uncovering existing water lines unless absolutely necessary. Uncovering shall be done only in the presence of a Water Department Engineer.
- The Contractor shall have the option of installing precast concrete type 1A curb inlets in lieu of the brick type structure. See standard detail precast type 1A curb inlet, dated August, 1979.
- Inlets with concrete tops shall have manhole rings and covers according to the following schedule:

Length	No. of Rings & Covers
5'	1
6-10'	2
11-15'	3
16-20'	4

Rings shall be spaced such that there is a maximum of 2.5 feet from inside of wall to center of ring and a maximum of 5 feet (center to center) between rings. Rings and covers shall be centered front to back of concrete tops. The number and spacing of rings and covers may vary with the approval of the Field Engineer and Sewer Maintenance Department.



NOTE TO CONTRACTORS

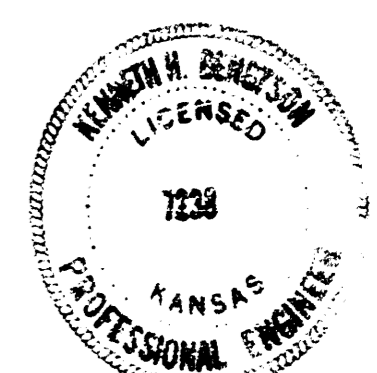
Notify the following Companies prior to any construction:

Bell Telephone Co.	268-3087
Gas Service Co.	263-7511
Kansas Gas & Electric	261-6248
Golf Course Maintenance	681-0243
Ken Pong	

Due to extensive, on going construction, special attention should be given to the location of underground utilities.

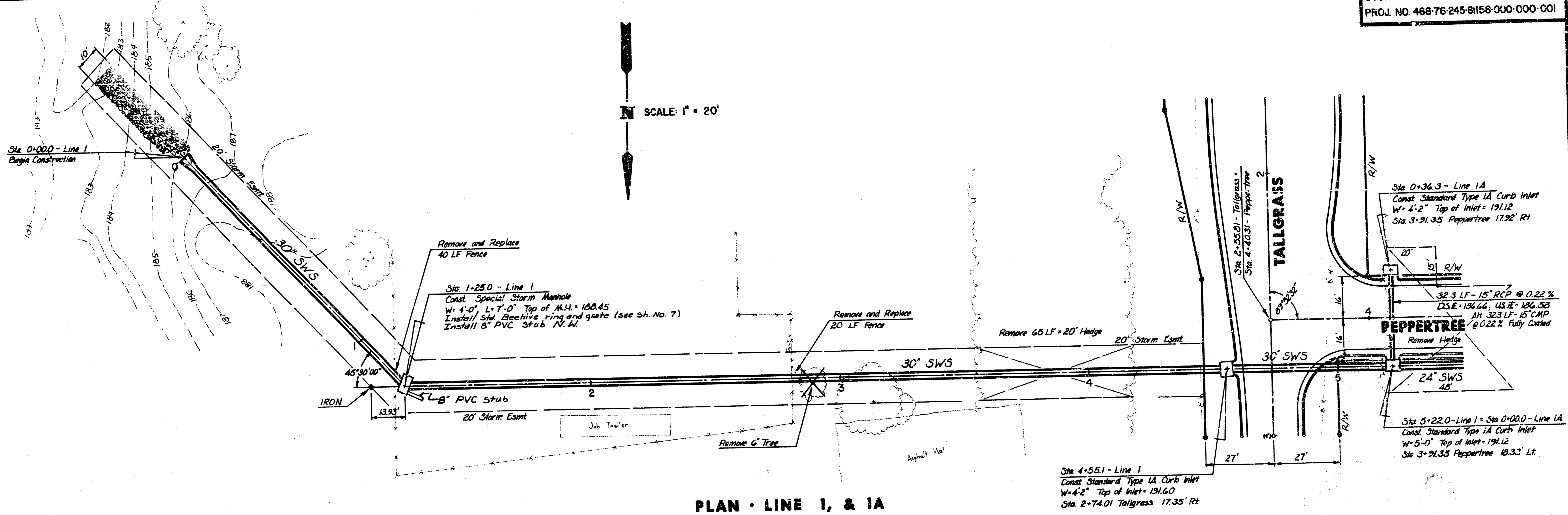
INDEX OF DRAWINGS

SHEET NO.	DESCRIPTION
1	TITLE SHEET
2	LINE 1, LINE 1A
3	LINE 1
4	LINE 2, 2A
5	LINE 2, 2B
6	TYPE 1A CURB INLET
7	MANHOLE, SPECIAL DITCH INLET
8	WOODLANDS EAST PLAT
9	TALLGRASS CLUBHOUSE PLAT

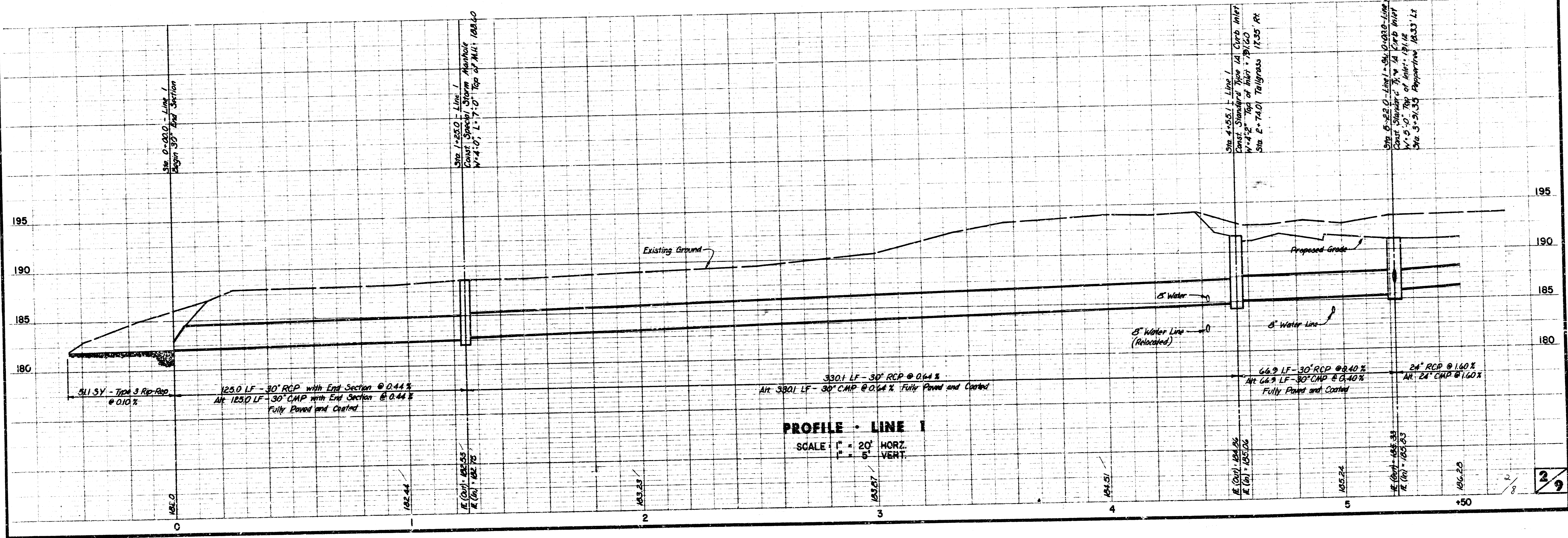


Van Doren Hazard Stallings
Architects - Engineers - Planners
Topeka - Wichita - Minneapolis - Kansas City

Sheet 1
of 9

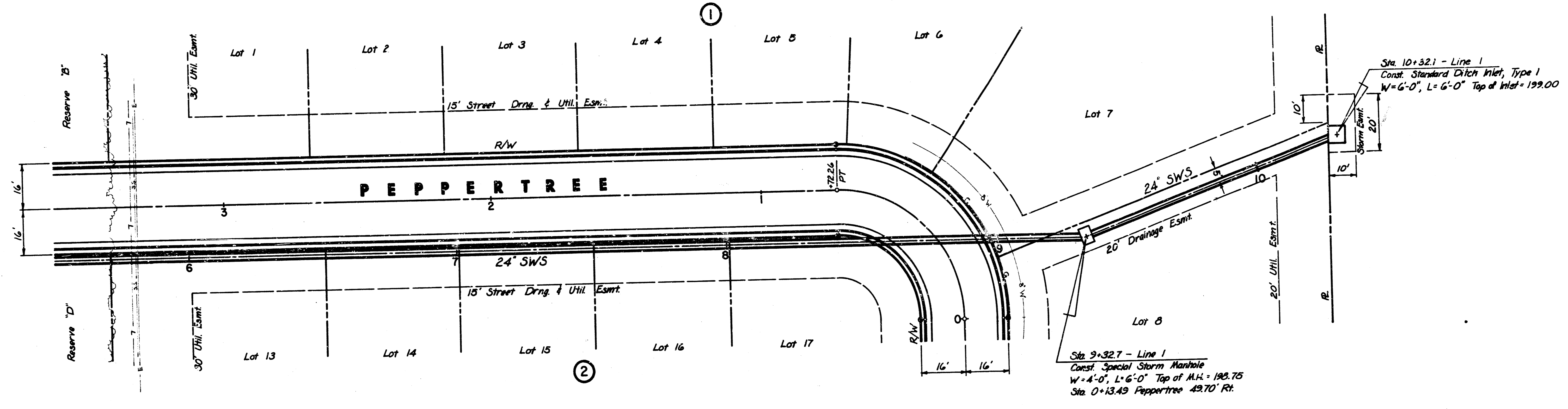


PLAN - LINE 1, & 1A

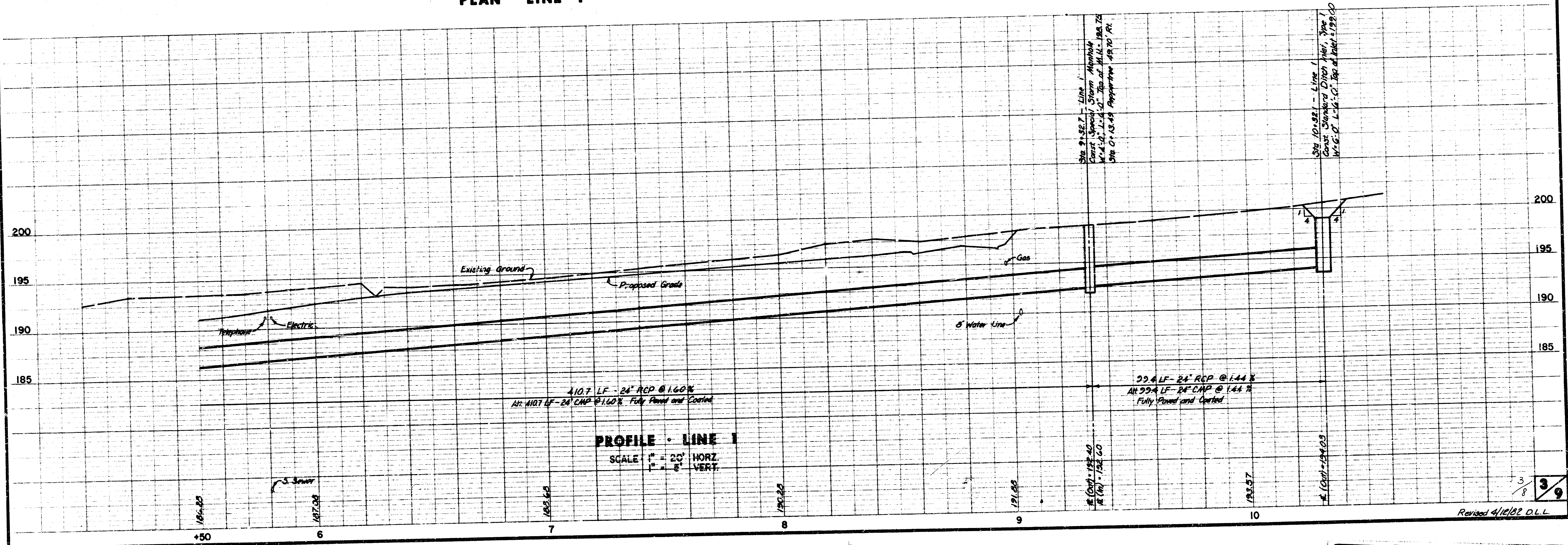


PROFILE - LINE 1
 SCALE: 1" = 20' HORIZ.
 1" = 5' VERT.

SCALE: 1" = 20'

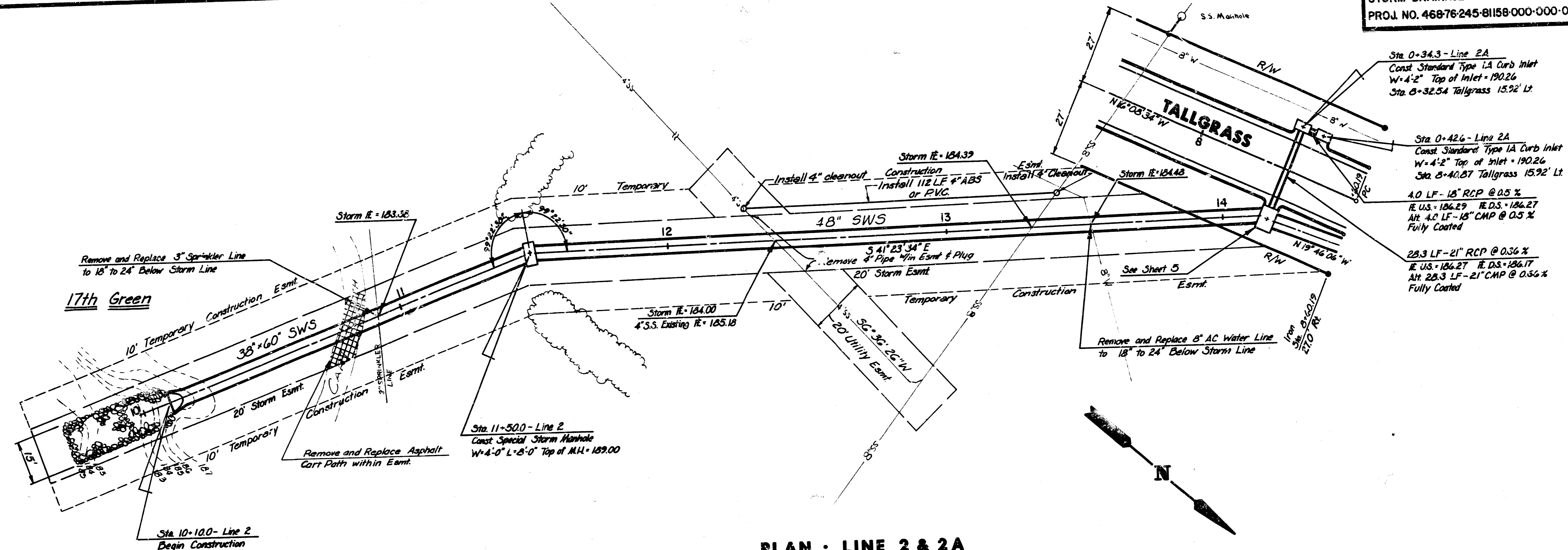


PLAN - LINE 1



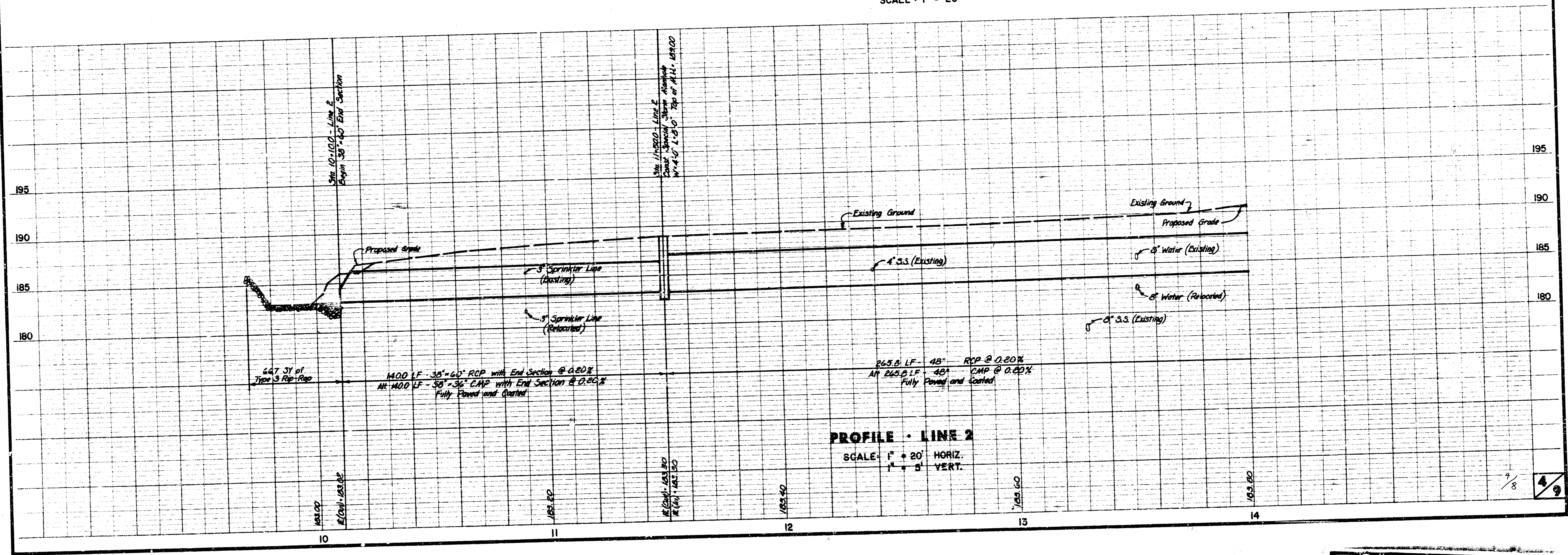
PROFILE - LINE 1
SCALE: 1" = 20' HORZ.
1" = 8' VERT.

WOODLANDS EAST
 STORM DRAINAGE
 PROJ. NO. 46876-245-81158-000-000-001

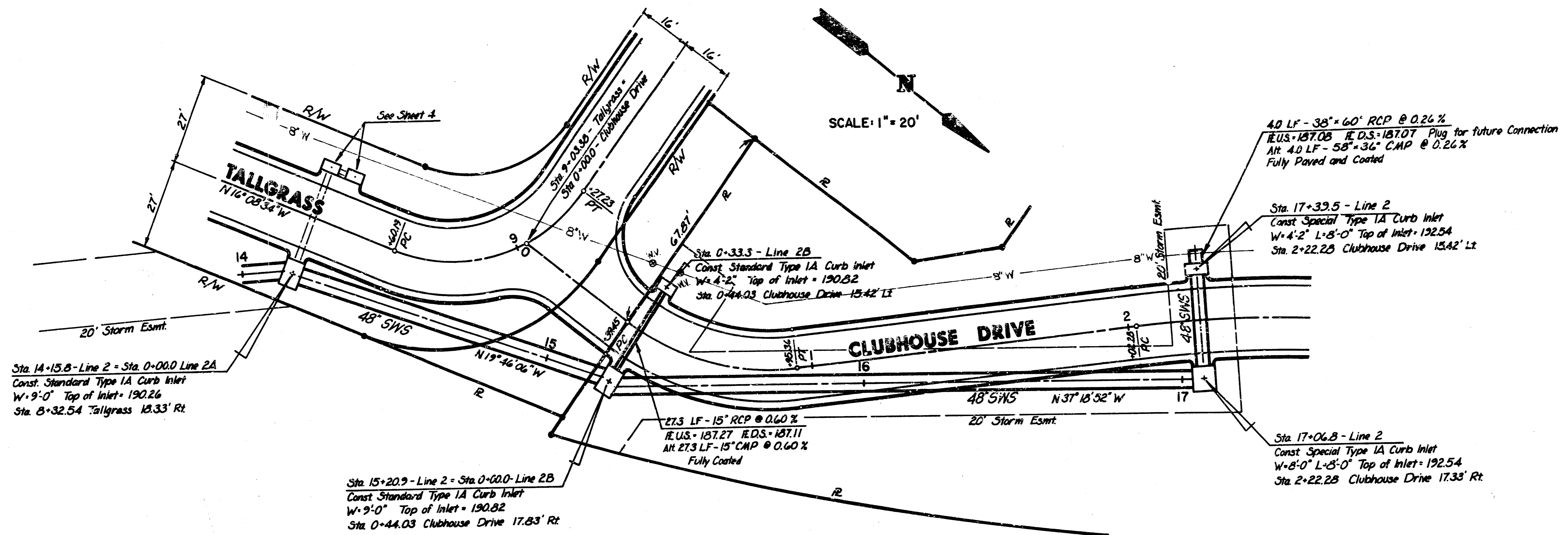


- Sta. 0+34.3 - Line 2A
 Const. Standard Type 1A Curb Inlet
 W=4'-2" Top of Inlet = 190.26
 Sta. 0+32.54 Tallgrass 15.92' Lt
- Sta. 0+42.6 - Line 2A
 Const. Standard Type 1A Curb Inlet
 W=4'-2" Top of Inlet = 190.26
 Sta. 0+40.87 Tallgrass 15.92' Lt
- 4.0 LF - 18" RCP @ 0.5%
 E. US = 186.27 E. DS = 184.27
 Alt. 4.0 LF - 18" CMP @ 0.5%
 Fully Coated
- 28.3 LF - 21" RCP @ 0.56%
 E. US = 186.27 E. DS = 186.17
 Alt. 28.3 LF - 21" CMP @ 0.56%
 Fully Coated

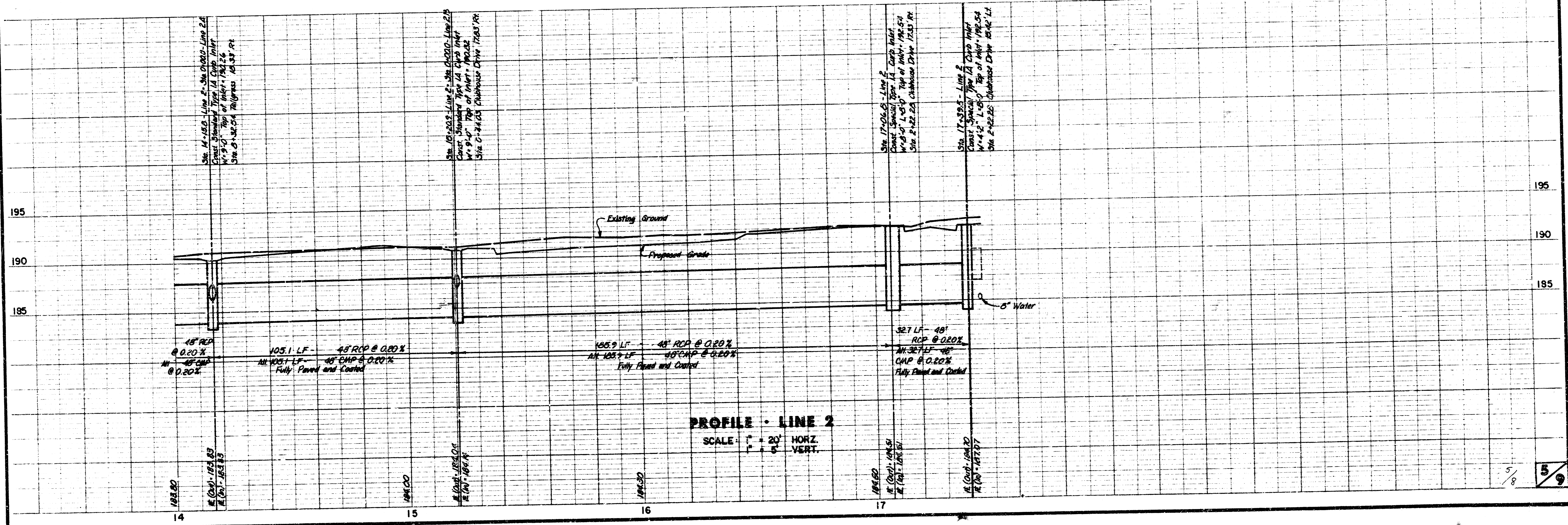
PLAN - LINE 2 & 2A
 SCALE - 1" = 20'



PROFILE - LINE 2
 SCALE - 1" = 20' HORIZ.
 1" = 5' VERT.



PLAN - LINE 2, & 2B

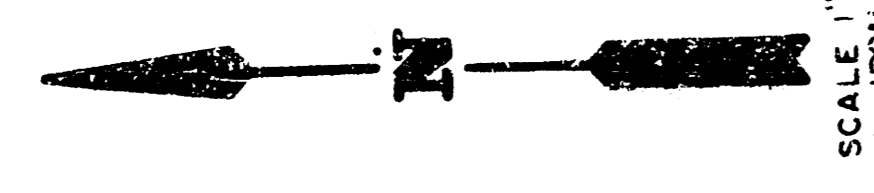
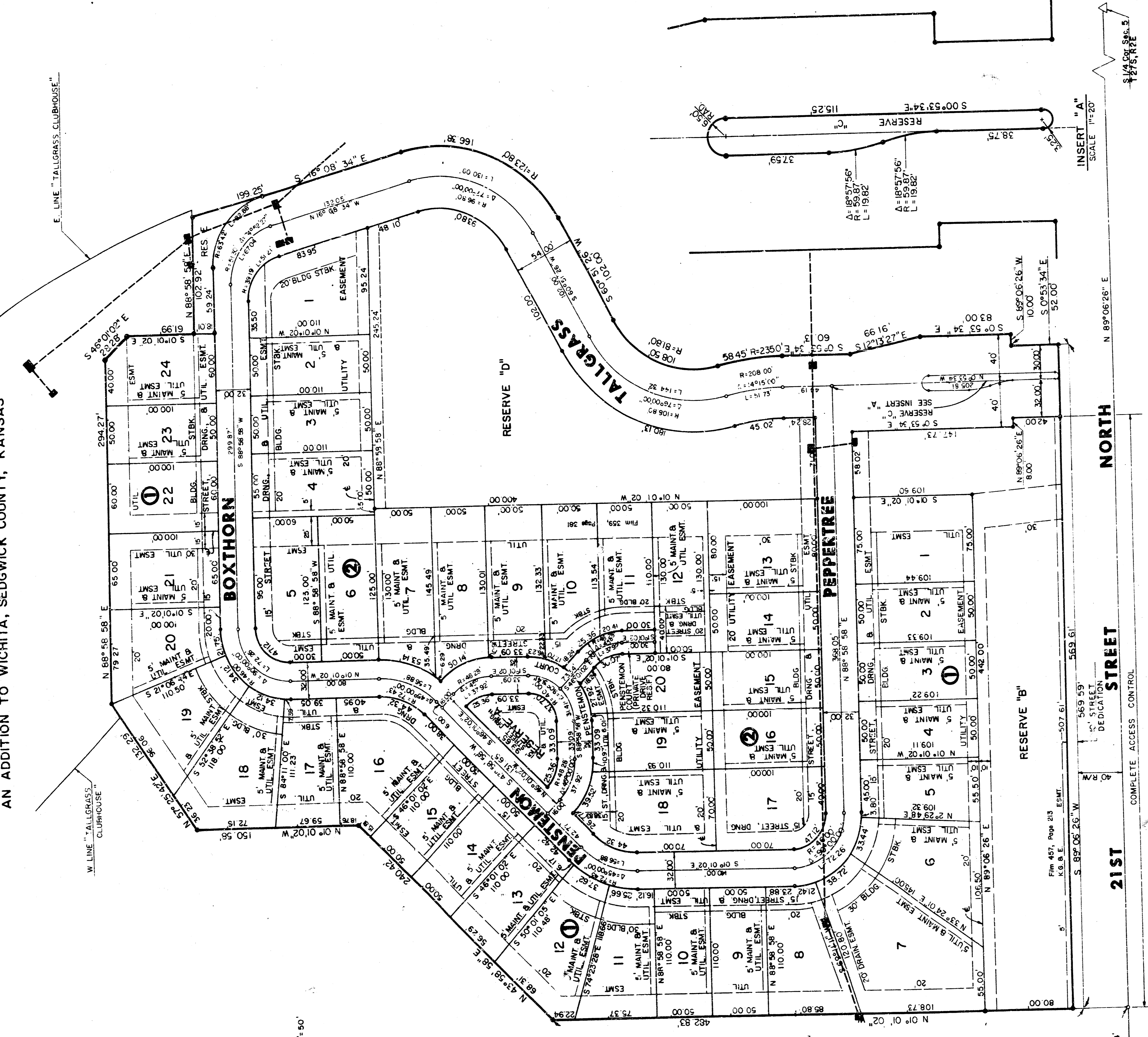


FINAL PLAT OF WOODLANDS EAST

AN ADDITION TO WICHITA, SEDGWICK COUNTY, KANSAS

P-Q 8-29

P-Q 8-29



Know all men by these presents that the undersigned property owners of the land as above set forth have submitted to and approved by the Wichita Sedgewick County Board of Planning and Zoning Commission, Wichita, Kansas, this 10th day of September, 1981, a plat of Woodlands East, an addition to Wichita, Sedgewick County, Kansas, as shown on the accompanying plat.

Wichita Sedgewick County Planning and Zoning Commission
 Chairman: *Robert A. Tulin*
 Secretary: *Robert A. Tulin*
 City Clerk: *Robert A. Tulin*

This plat approved and all dedications shown hereon, if any, accepted by the Board of County Commissioners of Sedgewick County, Kansas this 9th day of September, 1981.

By: *Robert A. Tulin* Chairman
 By: *Robert A. Tulin* Secretary
 By: *Robert A. Tulin* City Clerk

Attest: *Robert A. Tulin* County Clerk
 Entered on Transfer Record this 11th day of October, 1981.
 By: *Robert A. Tulin* Deputy

Know all men by these presents that the undersigned property owners of the land as above set forth have submitted to and approved by the Wichita Sedgewick County Board of Planning and Zoning Commission, Wichita, Kansas, this 10th day of September, 1981, a plat of Woodlands East, an addition to Wichita, Sedgewick County, Kansas, as shown on the accompanying plat.

Wichita Sedgewick County Planning and Zoning Commission
 Chairman: *Robert A. Tulin*
 Secretary: *Robert A. Tulin*
 City Clerk: *Robert A. Tulin*

This plat approved and all dedications shown hereon, if any, accepted by the Board of County Commissioners of Sedgewick County, Kansas this 9th day of September, 1981.

By: *Robert A. Tulin* Chairman
 By: *Robert A. Tulin* Secretary
 By: *Robert A. Tulin* City Clerk

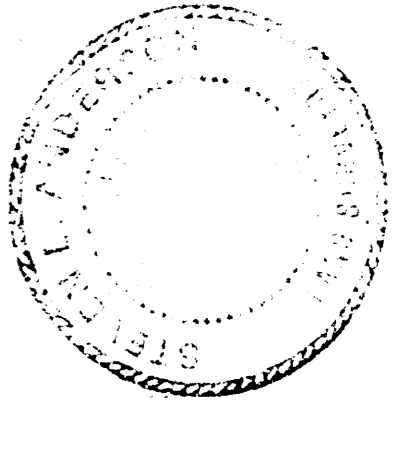
Know all men by these presents that the undersigned property owners of the land as above set forth have submitted to and approved by the Wichita Sedgewick County Board of Planning and Zoning Commission, Wichita, Kansas, this 10th day of September, 1981, a plat of Woodlands East, an addition to Wichita, Sedgewick County, Kansas, as shown on the accompanying plat.

Wichita Sedgewick County Planning and Zoning Commission
 Chairman: *Robert A. Tulin*
 Secretary: *Robert A. Tulin*
 City Clerk: *Robert A. Tulin*

This plat approved and all dedications shown hereon, if any, accepted by the Board of County Commissioners of Sedgewick County, Kansas this 9th day of September, 1981.

By: *Robert A. Tulin* Chairman
 By: *Robert A. Tulin* Secretary
 By: *Robert A. Tulin* City Clerk

Attest: *Robert A. Tulin* County Clerk
 Entered on Transfer Record this 11th day of October, 1981.
 By: *Robert A. Tulin* Deputy



FILMED FROM THE BEST AVAILABLE COPY....

P-Q 8-29

**FINAL PLAN OF
TALLGRASS CLUBHOUSE**
AN ADDITION TO WICHITA, SEDGWICK COUNTY, KANSAS

I, Kenneth H. Henderson, a Civil Engineer in Kansas do hereby certify that I have been in responsible charge of surveying and platting of "Tallgrass Clubhouse," an addition to Wichita, Sedgewick County, Kansas into a lot and a block, the same being accurately set forth in the accompanying plat and described as follows:

A tract in the southwest quarter of Section 2, Township 27 south, Range 3 east of the 6th P. M., Sedgewick County, Kansas, commencing at the southwest corner of said section 2 thence along the south line of said southwest quarter a bearing of N 89° 00' 30" E, 2147.40 feet; thence N 0° 53' 24" W, 603.73 feet to a point on a curve to the left; thence along said curve having a central angle of 117° 11' 23", a radius of 810.00 feet, a long chord of 174.88 feet in length bearing N 73° 54' 42" W, a distance of 173.11 feet to the point of beginning; thence S 88° 28' 58" W, 301.41 feet; thence N 42° 52' 54" W, 306.16 feet; thence S 24° 00' 26" W, 322.00 feet; thence N 42° 53' 24" W, 411.27 feet; thence N 0° 53' 24" W, 300.00 feet; thence N 71° 18' 41" E, 452.25 feet; thence N 89° 00' 30" E, 130.00 feet; thence S 73° 54' 42" W, 12.01 feet; thence S 21° 01' 05" E, 300.00 feet to a point on a curve to the right having a central angle of 34° 38' 28", a radius of 810.00 feet, a long chord of 488.40 feet bearing S 28° 01' 23" E, a distance of 482.93 feet to the point of beginning.

Hereby certify that the details of this plat are correct to a part of the plat and better than that of the plat of _____ of _____ 1981.

Kenneth H. Henderson
Civil Engineer

Know all men by these presents that the undersigned property owners of the land as set forth in the Civil Engineer's Certificate have caused the same to be surveyed and platted into a lot and a block, the same to be known as "Tallgrass Clubhouse," an addition to Wichita, Sedgewick County, Kansas. These plats for the construction and maintenance of public utilities as indicated on the accompanying plat are hereby granted.

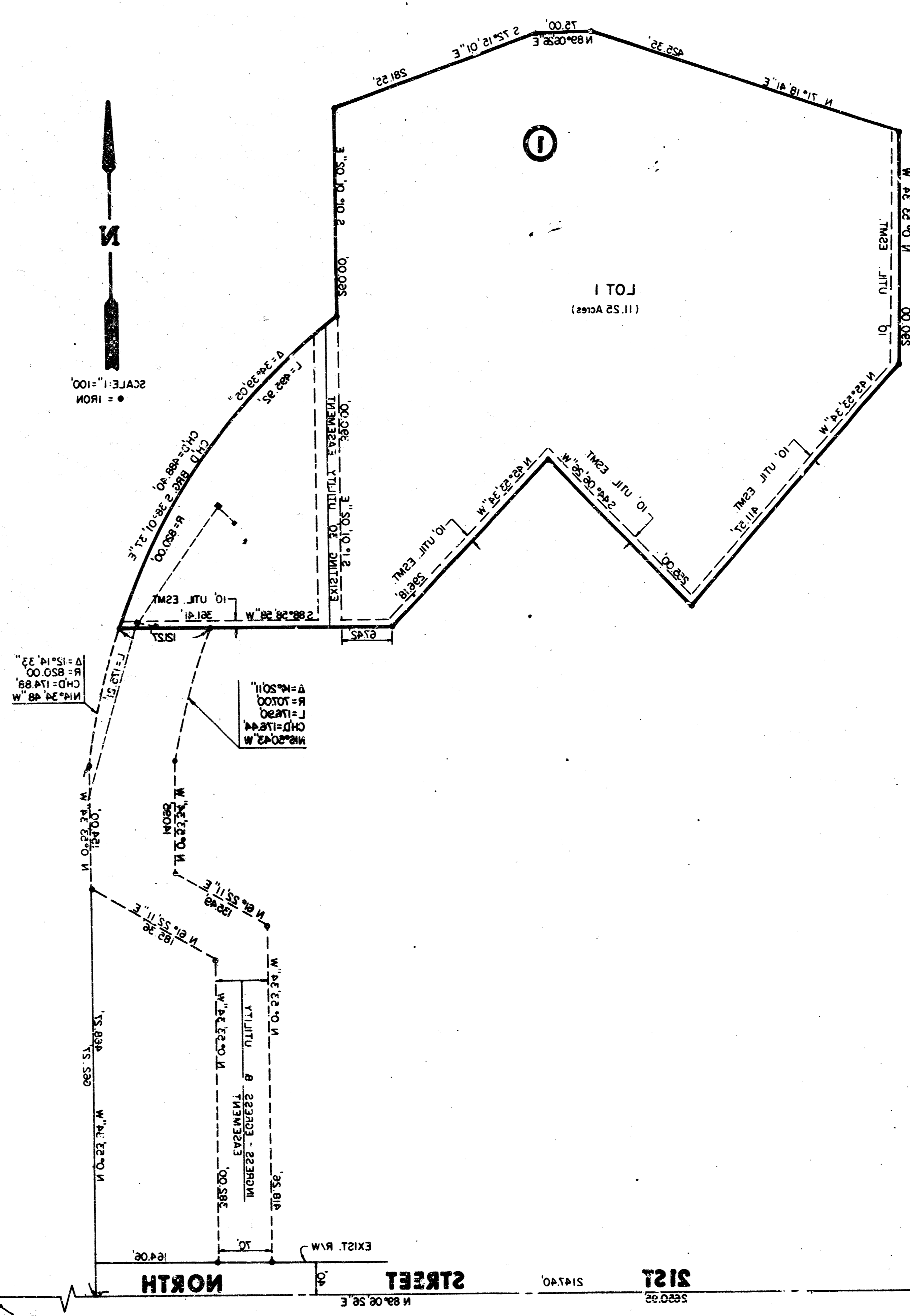
Tallgrass Clubhouse
William S. Hunt

STATE OF KANSAS
COUNTY OF SEDGWICK

Be it remembered that on this 22nd day of April, 1981, before me, a Notary Public in and for said State and County, came the Tallgrass Clubhouse, a corporation organized under the laws of the State of Kansas, and this Notary Public acknowledged the execution of the same. In testimony whereof I have hereunto set my hand and affixed my notarial seal the day and year above written.

Thomas J. Johnson
Notary Public

Appointment Expires: July 5, 1983



This plat approved and all dedications shown hereon, if any, accepted by the City Commission of the City of Wichita, Kansas this 22nd day of April, 1981.

Robert A. Larkin
Mayor

Edward C. Glick
City Clerk

This plat of "Tallgrass Clubhouse," has been submitted to and approved by the Wichita-Sedgewick County Metropolitan Area Planning Commission, Wichita, Kansas.

Dated this 22nd day of April, 1981.

James J. Johnson
Vice Chairman

Robert A. Larkin
Secretary

This plat approved and all dedications shown hereon, if any, accepted by the Board of County Commissioners of Sedgewick County, Kansas this 22nd day of April, 1981.

Robert A. Larkin
Chairman

Edward C. Glick
Commissioner

Thomas J. Johnson
Commissioner

Robert A. Larkin
County Clerk

Entered on transfer record this 22nd day of April, 1981.

Robert A. Larkin
County Clerk

STATE OF KANSAS
COUNTY OF SEDGWICK

This is to certify that this instrument was filed for records in the Register of Deeds Office at 11:30 AM on the 22nd day of MAY, 1981.

Robert A. Larkin
Register of Deeds

Thomas J. Johnson
Deputy

16 5 3 14