

**GENERAL NOTES**

- UNLESS SHOWN OR STATED OTHERWISE ON THESE DRAWINGS, MATERIALS AND CONSTRUCTION SHALL BE IN ACCORDANCE WITH CITY OF WICHITA STANDARD SPECIFICATIONS.
- CONTRACTOR WILL BE REQUIRED TO PROVIDE A MINIMUM ADVANCE NOTICE OF SEVENTY-TWO (72) HOURS TO UTILITY COMPANIES PRIOR TO STARTING ANY EXCAVATION AS FOLLOWS:  
 KANSAS ONE-CALL 1-800-344-7233  
 OR 620-2470 (LOCAL WICHITA)
- THE CONTRACTOR MUST NOTIFY THE FOLLOWING IN CASE OF AN EMERGENCY:  
 SBC (TELEPHONE) 800-870-8260  
 COX COMMUNICATIONS (CABLE) 432-1661  
 KANSAS GAS SERVICE (GAS) 802-1001  
 CITY OF WICHITA WATER & SEWER 432-5000  
 WESTAR (ELECTRIC) 431-6542  
 AQUILA (GAS) 918-0099
- THE CONTRACTOR SHALL BE RESPONSIBLE FOR PREVENTING AND REPAIRING PROPERTY DAMAGE. THE CONTRACTOR WILL BE REQUIRED TO RE-ESTABLISH ANY PROPERTY RIGHTS WHICH ARE DAMAGED OR LOST DURING HIS CONSTRUCTION OPERATIONS. SUCH RIGHTS SHALL BE RE-ESTABLISHED BY A LICENSED LAND SURVEYOR IN ACCORDANCE WITH STATE LAWS.
- EXISTING UTILITIES AND THEIR LOCATIONS, AS SHOWN ON THE PLANS REPRESENT THE BEST INFORMATION AVAILABLE FOR DESIGN. LOCATION INFORMATION HAS BEEN OBTAINED FROM THE VARIOUS UTILITY COMPANIES AND IS EITHER FROM COMPANY RECORD DRAWINGS OR COMPANY PROVIDED FIELD LOCATIONS. THE PLAN LOCATIONS SHOWN ARE NOT GUARANTEED. ADDITIONAL EXISTING UTILITIES MAY ALSO BE ENCOUNTERED.
- PUBLIC FROM THE REMOVAL OF MISCELLANEOUS STRUCTURES AND EXCESS EXCAVATION WHICH IS TO BE WASTED SHALL BE DEPOSITED ON SITES TO BE PROVIDED BY THE CONTRACTOR. THESE SITES SHALL BE APPROVED BY THE ENGINEER AS TO SUITABILITY, APPEARANCE AND SITE LOCATION. LOCATIONS THAT, IN THE OPINION OF THE ENGINEER, WILL LEAVE AN UNDESIRABLE APPEARANCE WILL NOT BE APPROVED. ALL DISPOSAL SITES MUST BE APPROVED BY THE KANSAS DEPARTMENT OF HEALTH AND ENVIRONMENT. MATERIAL EITHER STOCKPILED OR DISPOSED OF IN A FLOOD PLAIN WOULD REQUIRE A KANSAS STATE BOARD OF AGRICULTURE PERMIT. ANY MATERIAL DUMPED IN WATERS OF THE UNITED STATES OR WETLANDS IS SUBJECT TO U.S. CORPS OF ENGINEERS PERMITTING REGULATIONS. ANY MATERIAL DUMPED OR STOCKPILED BEYOND APPROVED CONSTRUCTION LIMITS WOULD REQUIRE ADDITIONAL ARCHAEOLOGICAL INVESTIGATIONS UNLESS BURED IN A PREVIOUSLY APPROVED BORROW LOCATION.
- COST OF EXCAVATION, HAULING, AND DUMPING OF EXCESS EXCAVATION SHALL BE SUBSIDIARY TO THE PROJECT.
- A PORTION OF EXCESS EXCAVATED MATERIAL SHALL BE MOUND AROUND MANHOLES WHICH EXTEND MORE THAN ONE (1) FOOT ABOVE THE EXISTING GROUND. SUCH MOUNDS SHALL BE CONSTRUCTED WITH A SIX (6) FOOT DIAMETER FLAT TOP WITH 4 TO 1 SIDE SLOPES DOWN TO THE ORIGINAL GROUND. THE ELEVATION OF THE FLAT TOP OF THE MOUND SHALL BE 0.4 FOOT BELOW THE TOP OF THE MANHOLE.
- ALL STUBS AND PLUGGED PIPES SHALL BE LOCATED WITH GREEN PLASTIC TAPE IN THE SAME MANNER AS RISERS.
- CONNECTING TO EXISTING MANHOLES:  
 PRIOR TO LAYING SEWER LINES USING EXISTING STUBS IN EXISTING MANHOLES, THE CONTRACTOR SHALL EXPOSE AND VERIFY THE ELEVATION, GRADE AND ALIGNMENT OF EXISTING STUBS AND NOTIFY THE ENGINEER OF ANY DEVIATION FROM THE PLAN. WHERE CONNECTION TO AN EXISTING MANHOLE THAT DOES NOT HAVE AN EXISTING STUB OR THE STUB IS UNUSABLE DUE TO ELEVATION GRADE OR ALIGNMENT, THE CONTRACTOR SHALL BORE OUT INTO EXISTING MANHOLE WALL TO MAKE CONNECTION USING APPROVED WATER STOP GASKET, AND RESHAPE THE EXISTING MANHOLE INVERT TO PROVIDE SMOOTH FLOW. THE COST OF CONNECTING TO EXISTING MANHOLES IS INCIDENTAL TO THE PROJECT.
- TREES AND SHRUBS IN PUBLIC RIGHT-OF-WAY WHICH ARE IN DIRECT CONFLICT WITH PROPOSED NEW CONSTRUCTION SHALL BE REMOVED BY THE CONTRACTOR WITH THE ENGINEER'S APPROVAL. TREES AND SHRUBS WHICH ARE NOT IN DIRECT CONFLICT WITH PROPOSED NEW CONSTRUCTION SHALL BE SAVED AND PROTECTED FROM DAMAGE.
- ALL DISTURBED AREAS TO BE SEEDED WITH RYE GRASS AT A RATE OF 200 LBS. PER ACRE WITHIN 10 DAYS OF CONSTRUCTION. CONTRACTOR TO PREPARE GROUND PER CITY SPECIFICATIONS. COST IS SUBSIDIARY TO SITE PREPARATION AND RESTORATION.

**NOTE TO CONTRACTOR**

INSPECTION AND TESTING FOR THIS PROJECT IS TO BE PROVIDED BY A LICENSED CONSULTING ENGINEERING FIRM UNDER CONTRACT WITH THE OWNER/DEVELOPER. SAID INSPECTION TO BE IN ACCORDANCE WITH THE CITY OF WICHITA STANDARD CONSTRUCTION ENGINEERING PRACTICES AND CERTIFIED BY A LICENSED PROFESSIONAL ENGINEER. NO WORK SHALL BE PERFORMED IN DEDICATED EASEMENTS OR THE PUBLIC RIGHT-OF-WAY BY THE CONTRACTOR WITHOUT SUCH INSPECTION NOR SHALL ANY WORK BE COMPLETED IN DEDICATED EASEMENTS OR PUBLIC RIGHT-OF-WAY WITHOUT WRITTEN AUTHORIZATION BY THE CITY ENGINEER.

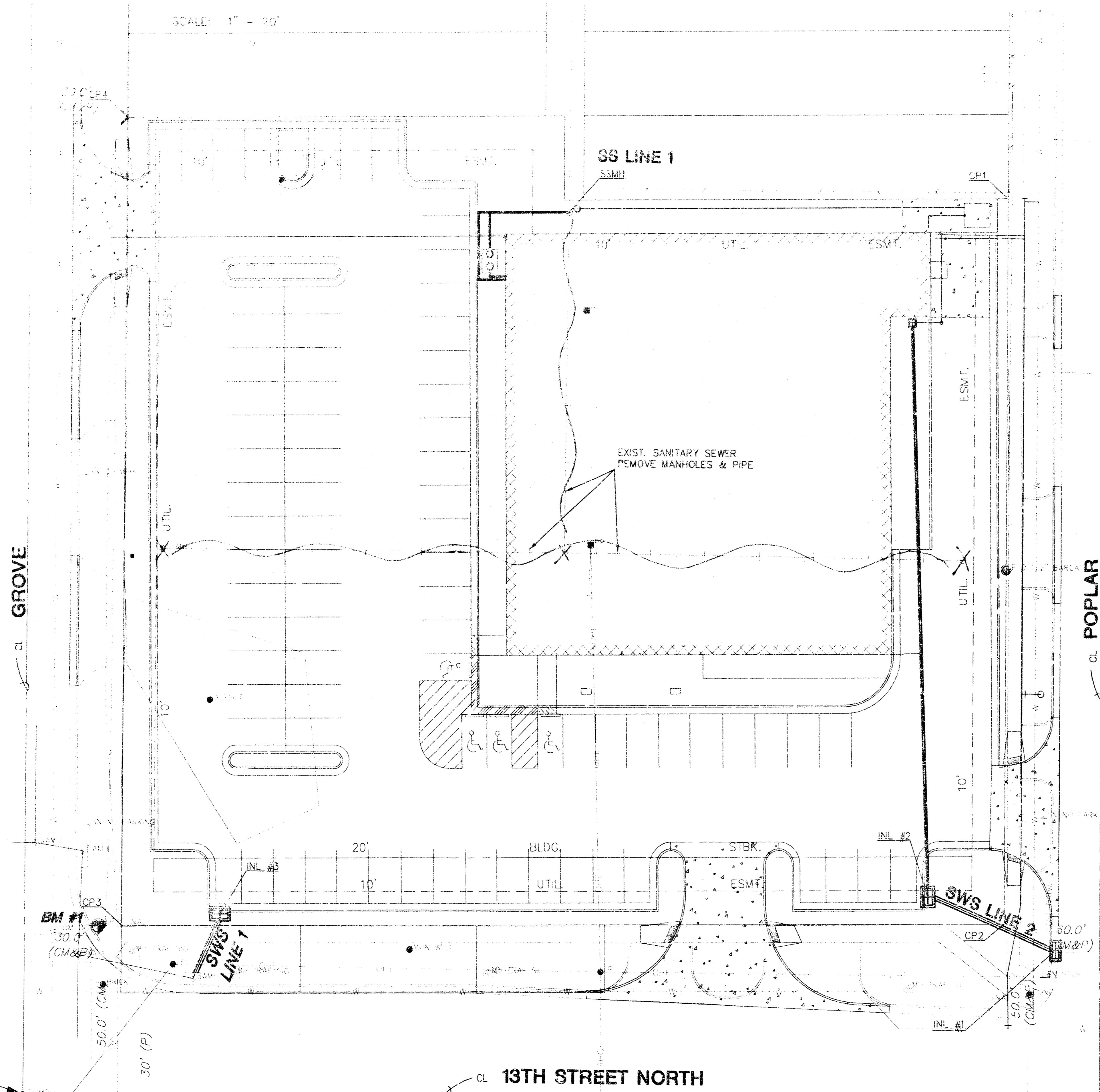
APPROVED AS NOTED  
 BY CITY ENGINEER OF WICHITA &  
 BY WICHITA FIRE DEPARTMENT

Storm Sewers VRH 11/28/05  
 Sanitary Sewer VRH 1/28/06

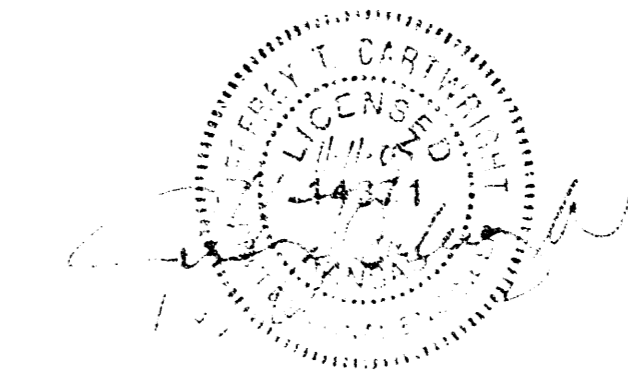
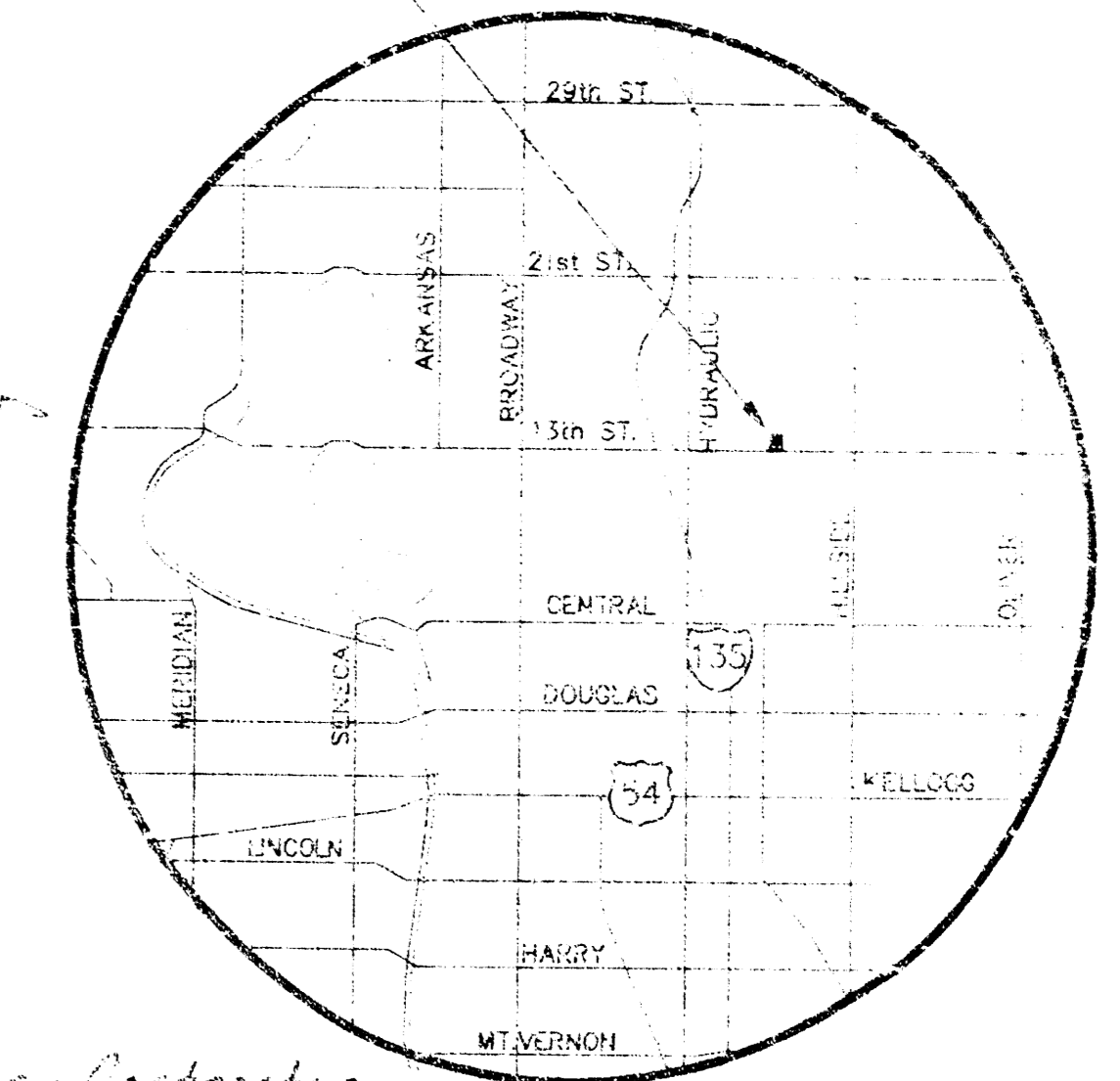
**LOT 1, BLK 1  
 SAVE-A-LOT ADDITION  
 STORM WATER & SANITARY  
 SEWER  
 1518PPS (607861)**



SCALE: 1" = 30'



Project Location



*Borranian Enterprises - Contractor  
 Gann, K.E. Miller - Inspector  
 Reviewed 2/10/06  
 As-Built  
 SS pdf by JDL 2/10/06*

LOCATION MAP

**BENCHMARKS**

- BM 1 120.19 C.G.W. DISK ON SIGNAL LIGHT POLE NE CORNER OF 13TH ST. AND GROVE ST.
- BM 2 121.52 "D" TO NE CORNER OF 13TH ST. N. & POPLAR ST. NORTH ON RETURN OF DRV.

**INDEX TO DRAWINGS**

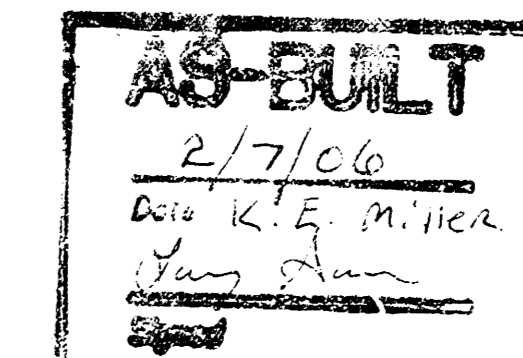
SHEET NO.	DESCRIPTION
1	TITLE SHEET
2	INLET DETAIL TYPE 1 & TYPE 2
3	MANHOLE DETAILS
4	SWS LINE 1 & 2; SS LINE 1

CP1	N1268.81	E1304.97
CP2	N1053.81	E1305.32
CP3	N1050.37	E1030.00
CP4	N1296.37	E1030.00
SSMH1	N1263.57	E1168.65
INL#1	N1046.27	E1321.51
INL#2	N1061.68	E1281.80
INL#3	N1054.53	E1063.52

NOTE: SERVICE LINES TO BE INSTALLED BY OTHERS SUBJECT TO O.C.I. REVIEW.

NOTE: CONTRACTOR TO VERIFY DEPTH & LOCATION OF EXISTING UTILITIES PRIOR TO CONSTRUCTION.

NOTE: CONTRACTOR TO COORDINATE REPLACEMENT OF PAVEMENT/SIDEWALK IN STREET R.O.W. W/CITY OF WICHITA



K:\MEPS\2003\03002 Save-a-lot\civil\dwg\SWS\03002d1.dwg

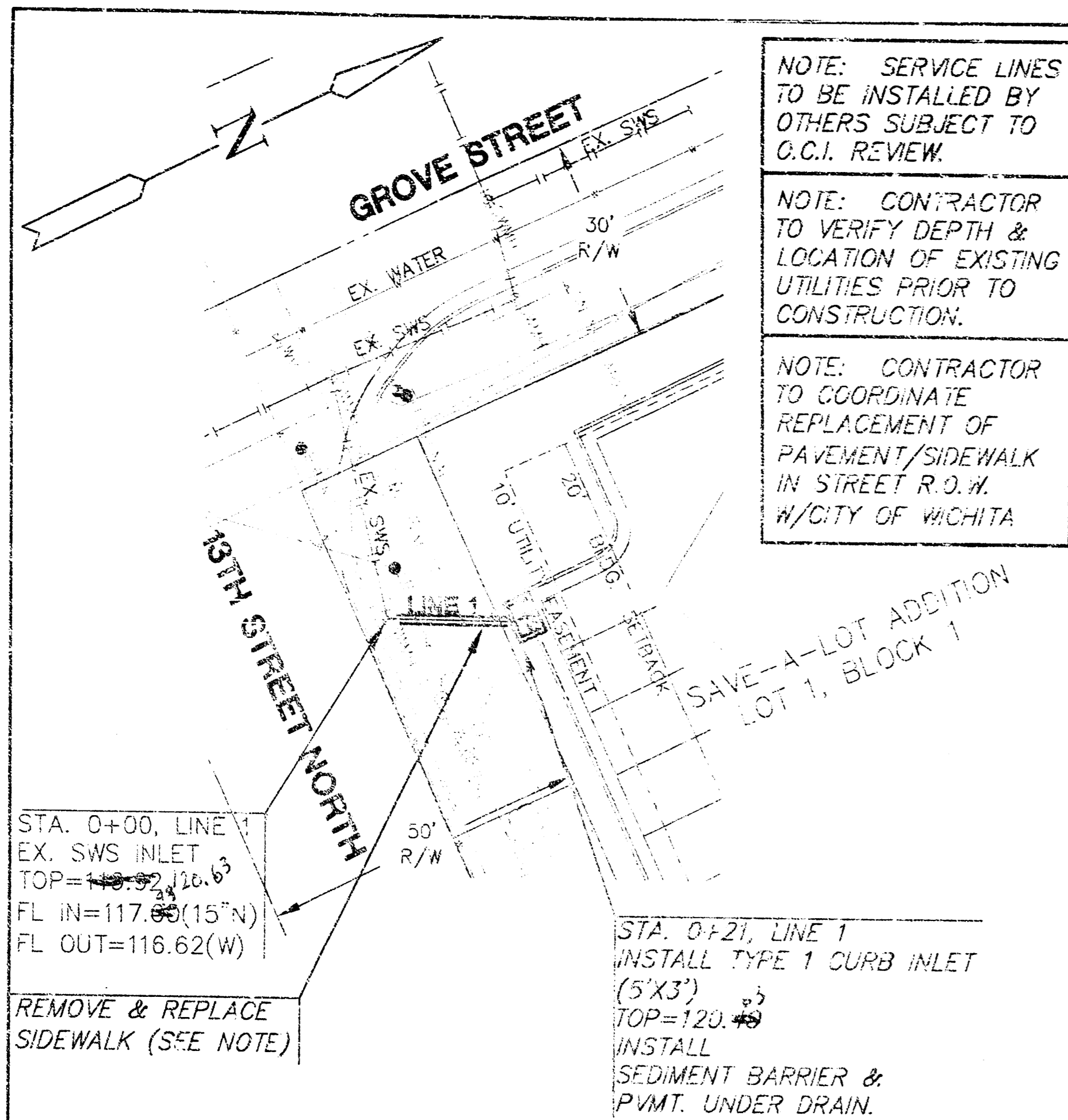
**MKEC ENGINEERING CONSULTANTS**  
 411 N. WEBB ROAD  
 WICHITA, KS. 67206  
 316 - 684 - 9600

**SANITARY SEWER & STORM WATER SEWER, TO SERVE LOT 1, BLOCK 1 SAVE-A-LOT ADDITION**

PROJECT NAME  
**TITLE SHEET**  
 SHEET TITLE

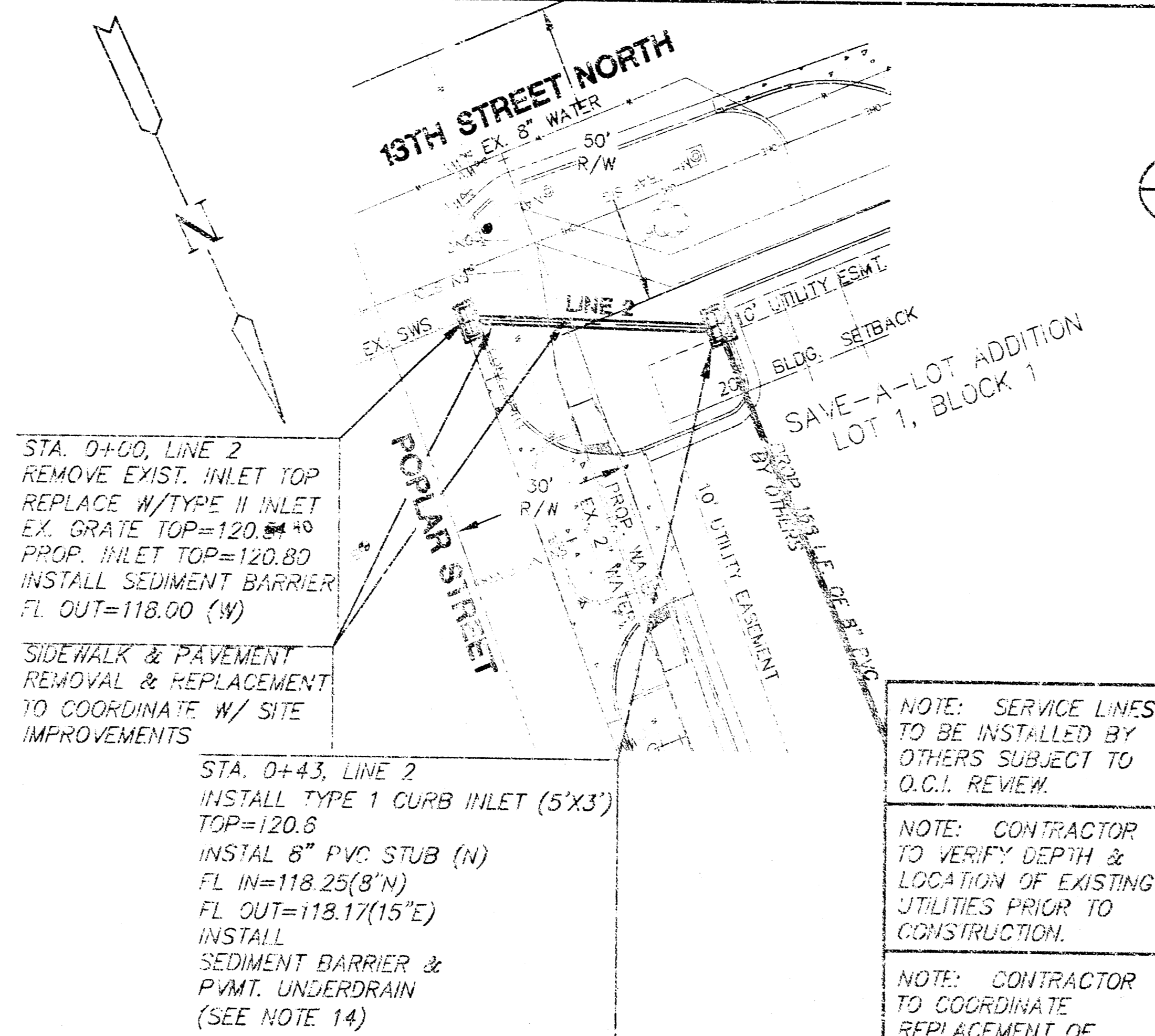
JTC	SMD	JTC
DESIGN BY:	DRAWN BY:	CHECKED BY:
JANUARY 2005	03002	1 / 2
DATE	JOB NO.	SHEET/OF

SW COR., of the SE 1/4 of SEC. 10, T27S, R1E, of the 6th Principle Meridian.



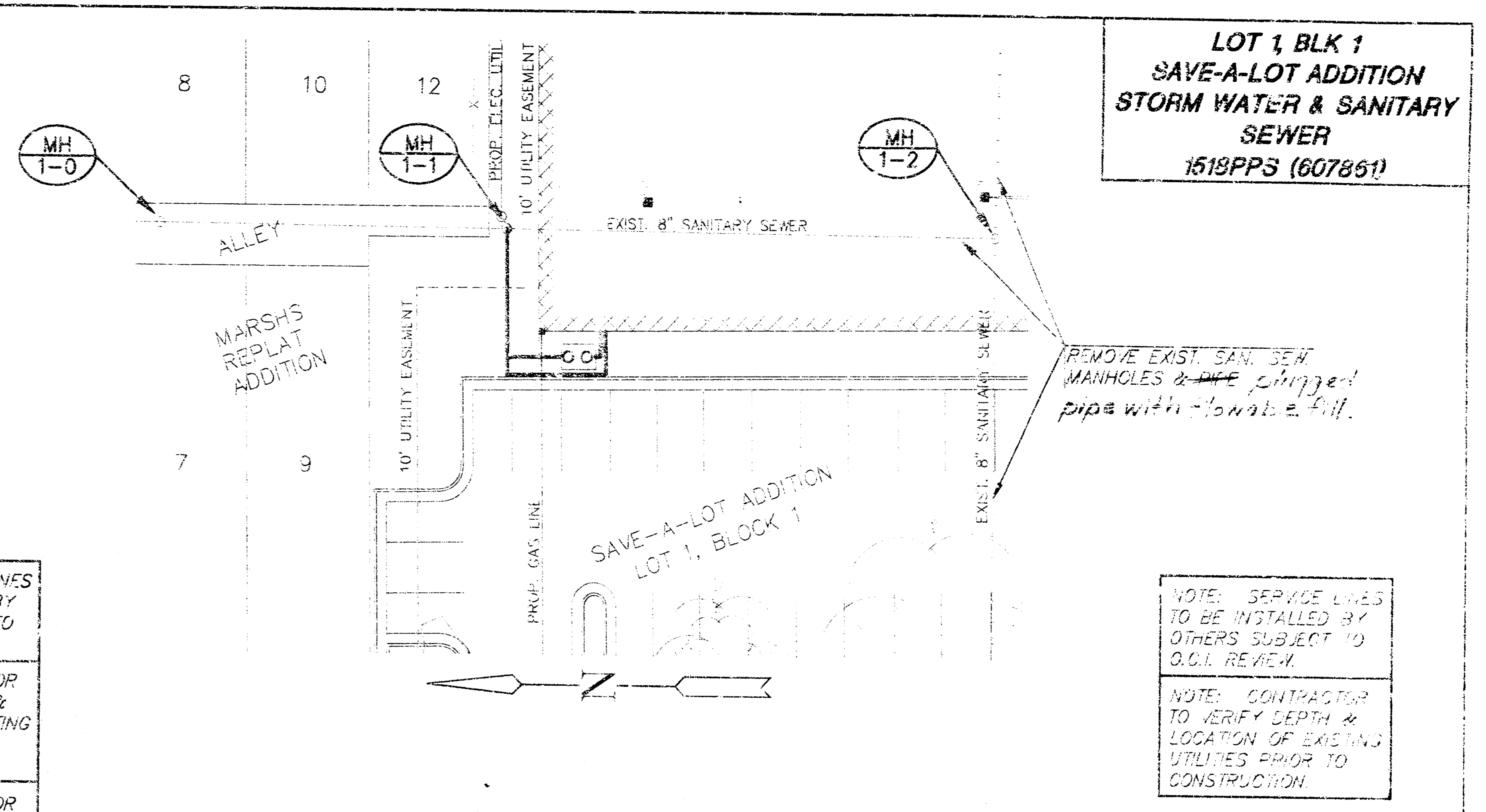
**STORM WATER PLAN LINE 1**

SCALE: 1"=20'



**STORM WATER PLAN LINE 2**

SCALE: 1"=20'



**SANITARY SEWER PLAN LINE 1**

SCALE: 1"=20'

