

**STORM SEWER TO SERVE
BG Boltons
Lot 9, Block 1
1535 PPS (607861)
CITY OF WICHITA, KANSAS
Jim Armour, P.E., Acting City Engineer**

INDEX OF SHEETS

- 1 Cover Sheet
- 2 Plan and Profile Sheets
- 3 Detail

GENERAL NOTES

1. Contractor will be required to provide notice to utility companies a minimum of twenty-four (24) hours prior to any excavation, as follows:

Kansas One-C&P 687-2470

The Contractor must notify the following in case of an emergency:

Cablevision 262-4270
or 263-2061
Westar Energy 383-8650
383-3000

Southwestern Bell Telephone Company 1-571-2611
City of Wichita Water Department 268-4908
City of Wichita Sewer Department 268-4071
Kansas Gas Service 832-3169
or 832-3167

2. Exist utilities and their locations, as shown on the plans, represent the best information obtainable for design. Location information has been obtained from the various utility companies and is either from company record drawings or company-provided field locations. The Contractor will be required to work around existing utilities which do not conflict with proposed construction.

3. The Contractor to verify utility locations prior to construction of this project.

4. Utility service and installation shall be coordinated with the respective utility owners. Contacts are:

Kansas Gas Service James Stoltz 831-3122
Westar Energy Russ Chitwood 261-6251

Wichita Water Paul Bryant 268-4555
Steve Palmer 268-4908

Southwestern Bell Jim Toon 268-2759
Multimedia Cablevision Mark Anaya 262-4270

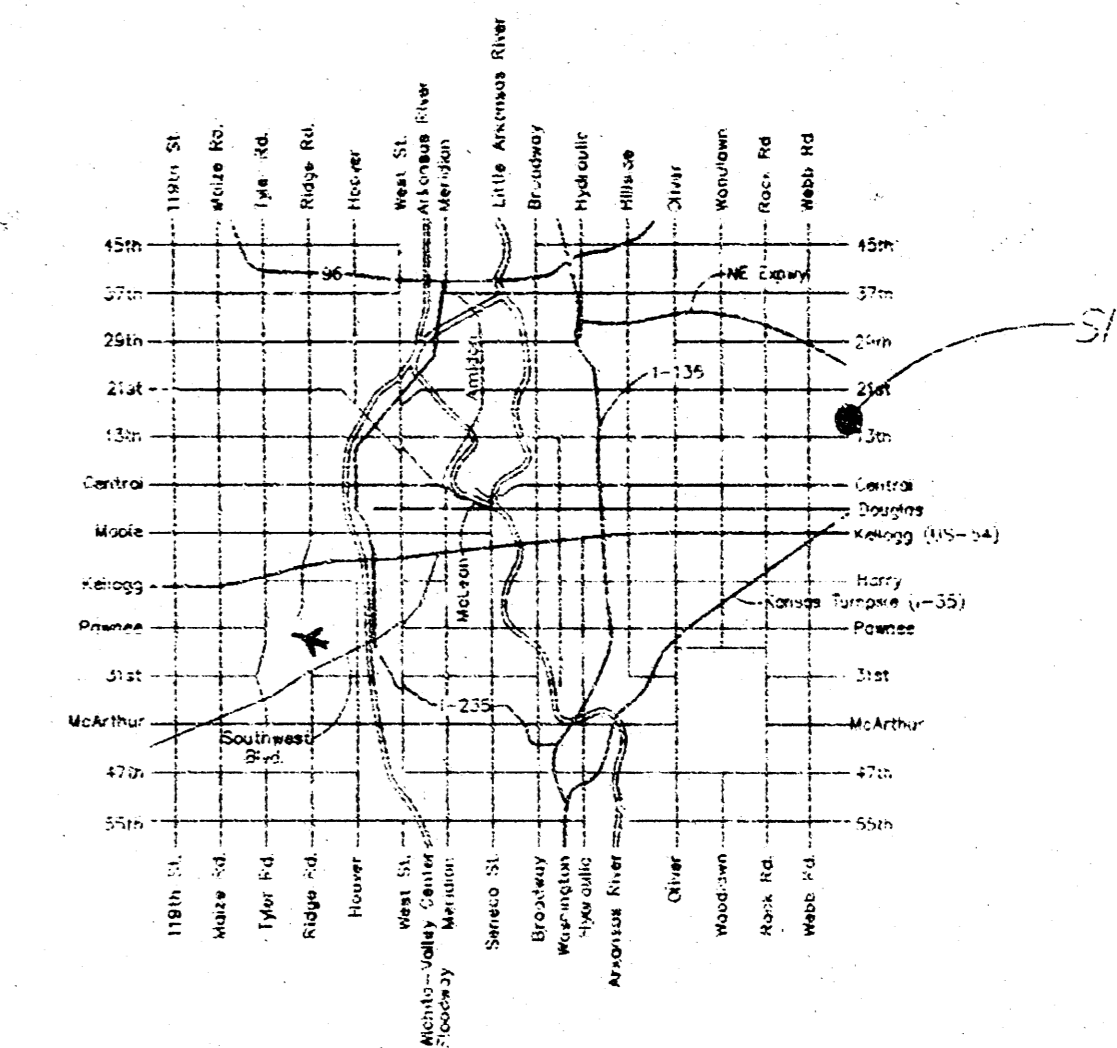
5. All lawn/hurl areas disturbed by construction of proposed improvements shall be restored with sod. All sodding work shall be in accordance with the City of Wichita standard specifications and the City of Wichita administrative regulation No. AR78 which governs cleanup and replacement following construction. All costs for this work shall be subsidiary to the lump sum price bid for "Site Restoration."

6. Traffic affected by the construction of this project shall be handled in accordance with the latest edition of the Manual on Uniform Traffic Control Devices.

7. All commercial signs to be moved by others prior to construction.

Properties within the project may have underground irrigation systems (lawn sprinklers) which conflict with the new construction. Contractor shall remove such components as needed during construction of the project. The irrigation system shall be reinstalled in like kind before project completion. Any irrigation system modifications required because of project improvements shall be coordinated with the property owner. Portions of underground irrigation systems not in conflict with construction shall be protected from damage and shall remain in place. All work related to underground irrigation/sprinklers shall be subsidiary to Site Restoration.

9. Cuts made to paved surfaces on public property will be repaired by the City's contractor and charged against the owner / applicant. Unit repair Prices are available from the City at 268-4418. A surcharge may be applicable. Call 268-4418 for details. Repair costs to be paid prior to release of water service if water service is affected.



City of Wichita

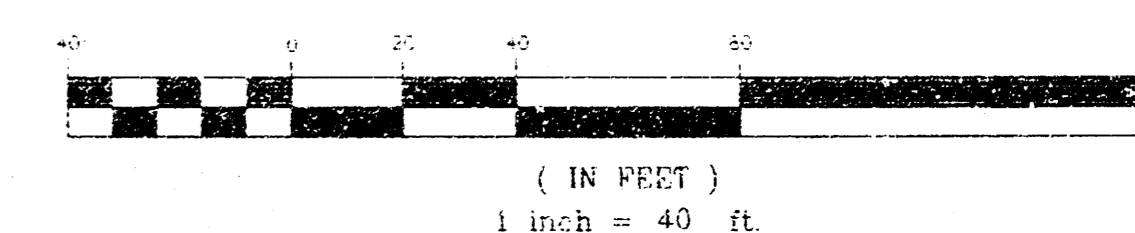
APPROVED AS NOTED

City Engineer Office **VRH 4/5/05**

NOTE TO CONTRACTORS

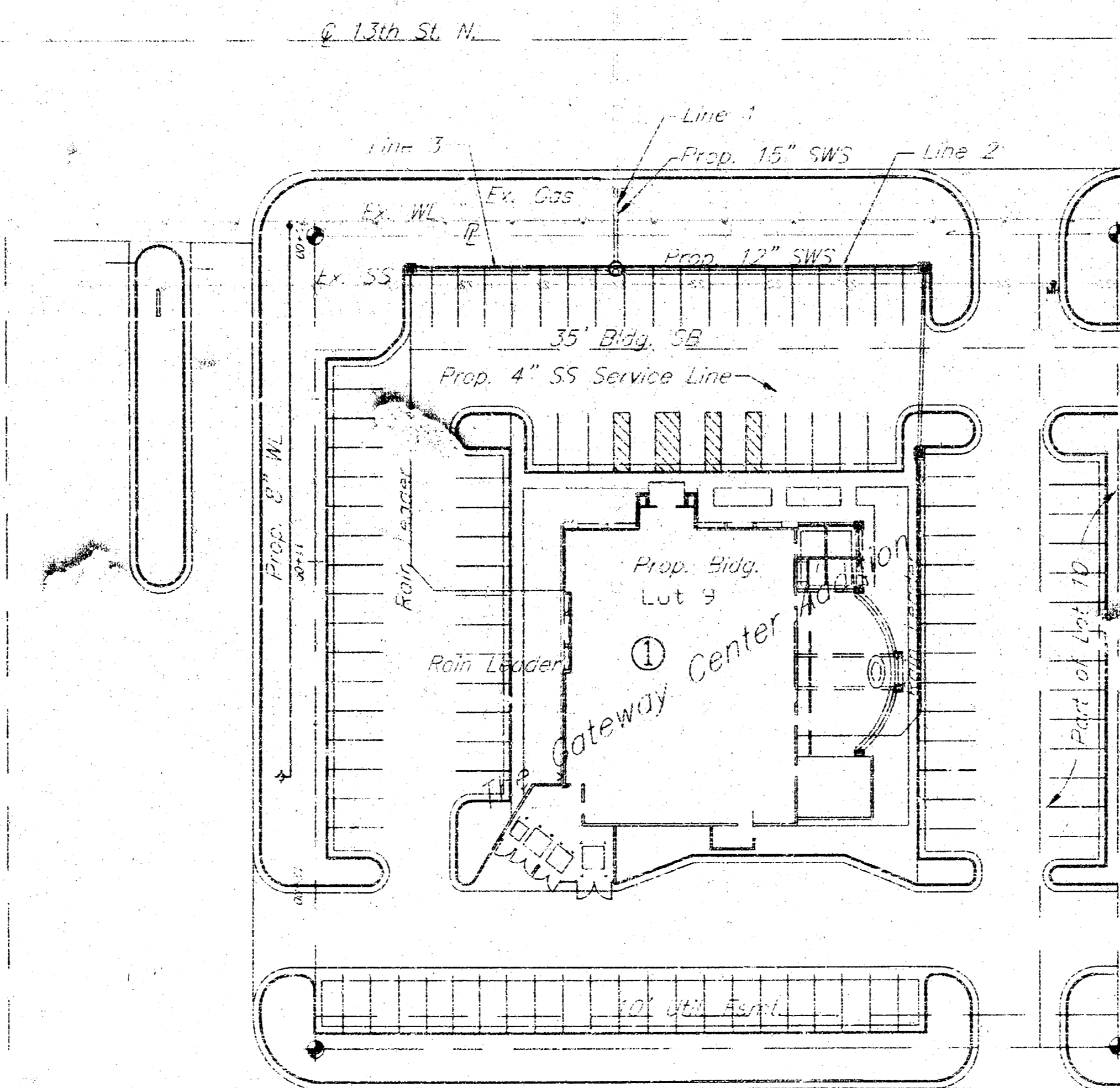
Installation, inspection and testing to the satisfaction shall be provided by a Licensed Land Surveying Engineer (LSE) under contract with the Owner/Developer. Said inspection to be in accordance with the City of Wichita standard construction engineering practices and certified by a Licensed Professional Engineer. No work shall be performed in dedicated easements or public right-of-way by the Contractor without such inspection nor shall any work be commenced without written authorization by the City Engineer. All Construction and Materials shall comply with the City of Wichita Specifications and Standards (as in use and available in the City Engineer's Office).

AS-BUILT
5/24/05
Data KE Miller
Signed

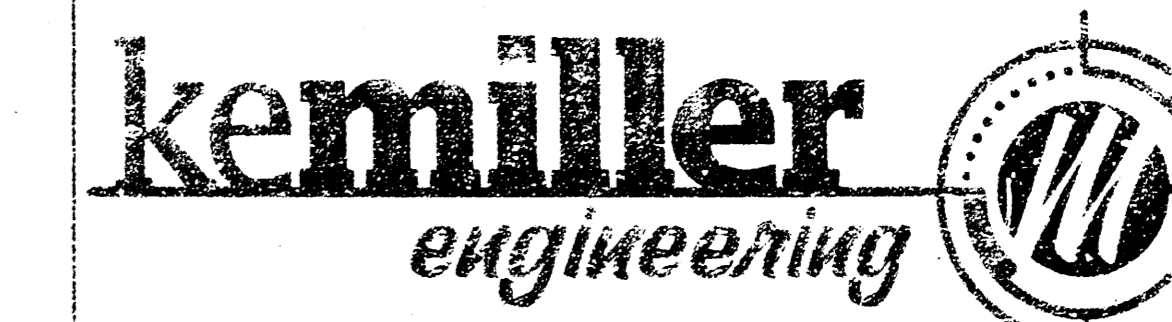


Benchmark
1. 600 Spike in South Face of Utility Pole, Approx. 27.5' N.E. of the N.W. Property Corner of Subject Property. Elev. =200.46 City Datum.

2. Top of Property Corner Iron at N.W. Corner, Lot 9, Block 1, The Gateway Center Addition. Elev. =199.33 City Datum.

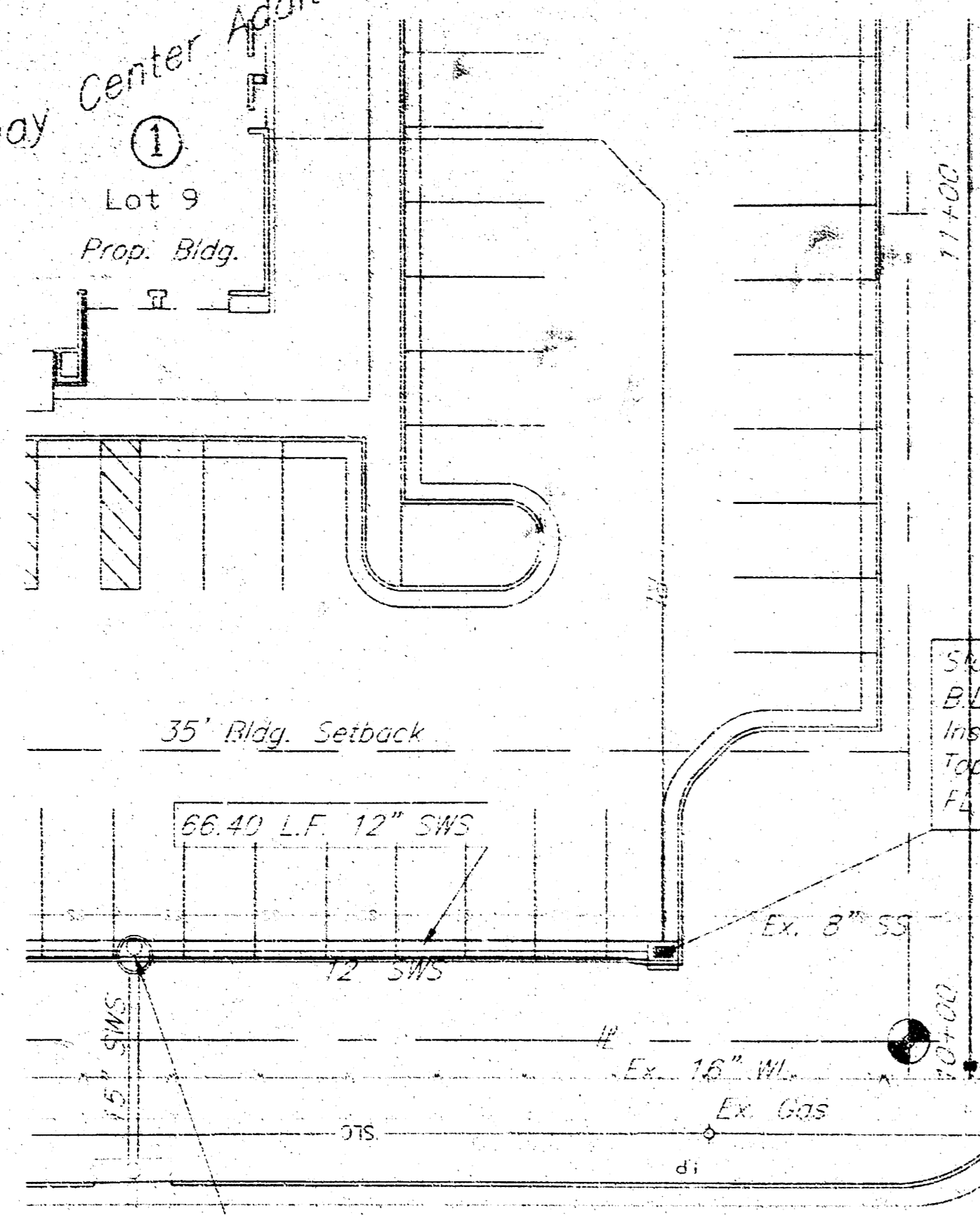


March 2005



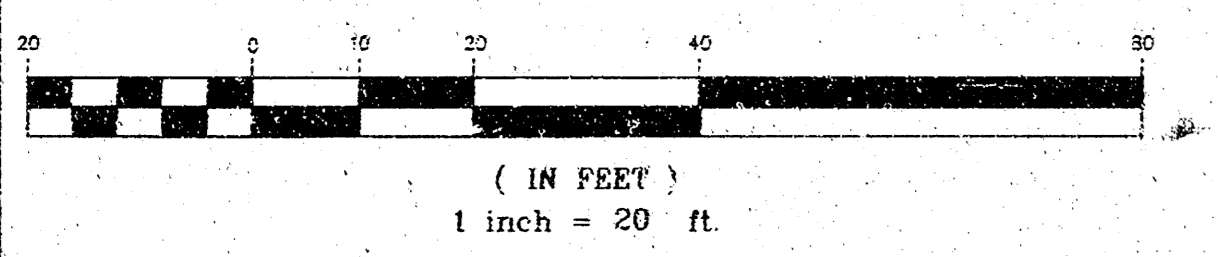
516 S. Market,
Wichita, KS 67202 316/264-0242

The Gateway Center Addition
 Lot 9
 Prop. Bldg.



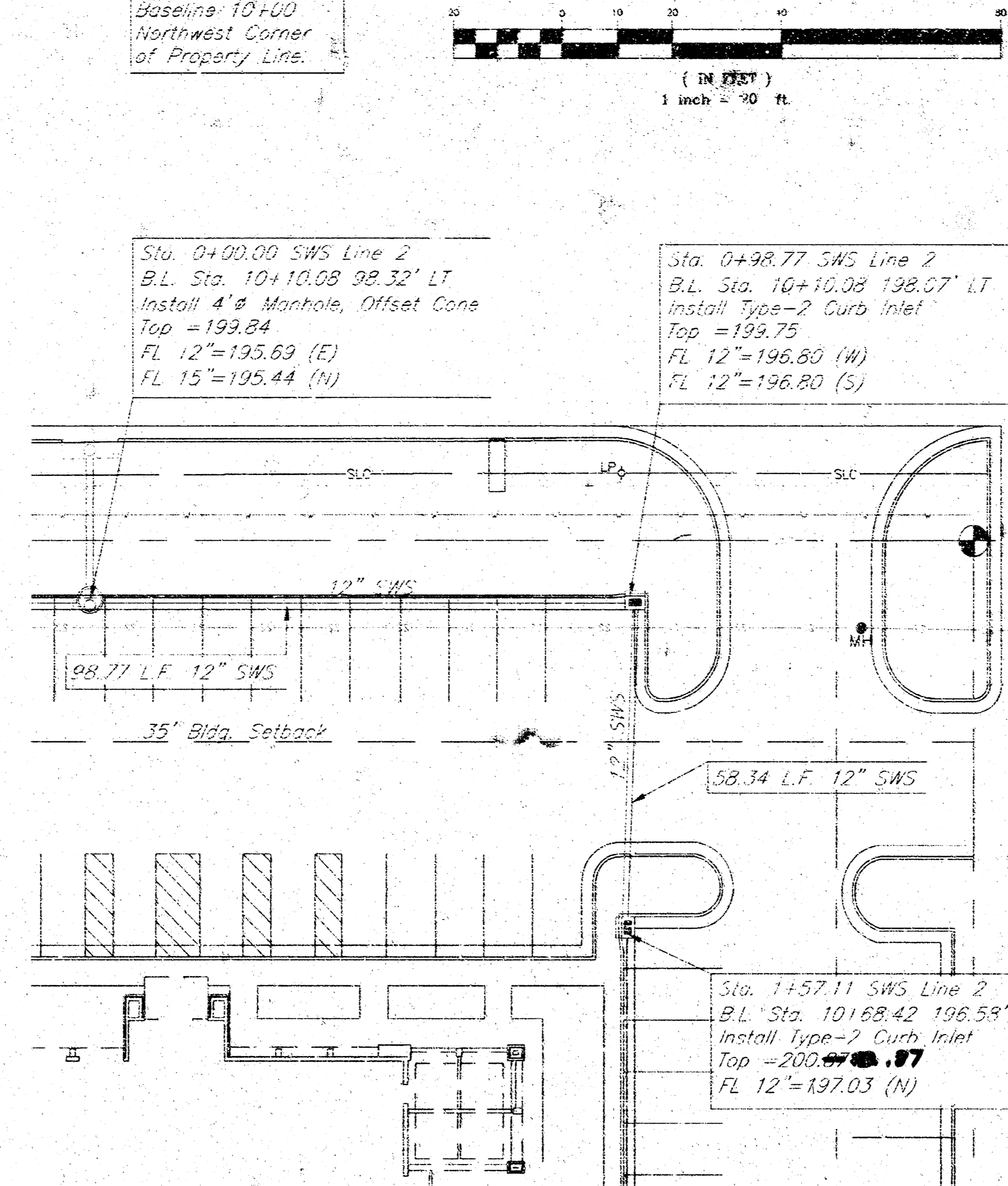
Sta. 0+00.00 SWS Line 3
 B.L. Sta. 10+10.08 98.32' LT
 Install 4" Manhole, Offset Cone
 Top = 199.84
 11 12" = 195.69 (F)
 FL 15" = 195.44 (N)

Sta. 0+66.40 SWS Line 3
 B.L. Sta. 10+10.08 31.92' LT
 Install Type 2 Curb Inlet
 Top = 199.66
 12 12" = 195.96 (E)



Baseline 10+00
 Northwest Corner
 of Property Line.

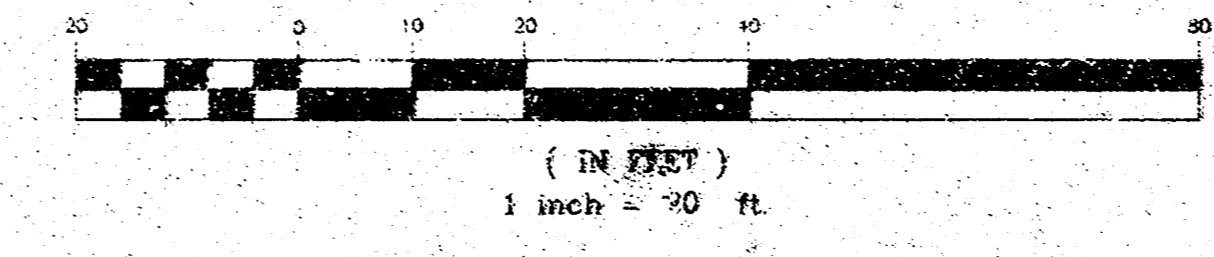
Baseline 10+00
 Northwest Corner
 of Property Line.



Sta. 0+00.00 SWS Line 2
 B.L. Sta. 10+10.08 98.32' LT
 Install 4" Manhole, Offset Cone
 Top = 199.84
 FL 12" = 195.69 (E)
 FL 15" = 195.44 (N)

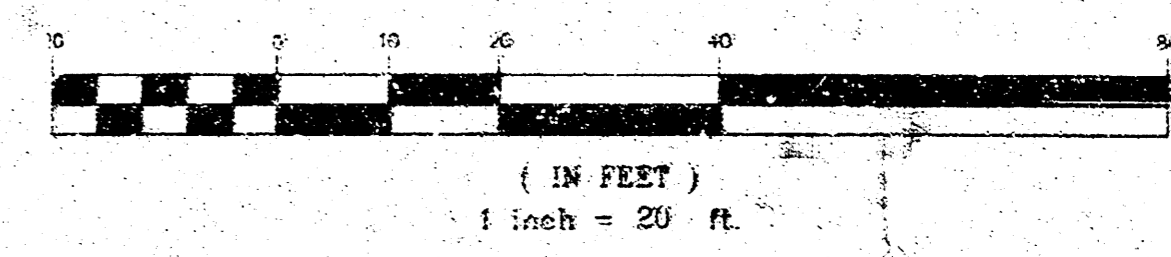
Sta. 0+98.77 SWS Line 2
 B.L. Sta. 10+10.08 198.07' LT
 Install Type-2 Curb Inlet
 Top = 199.75
 FL 12" = 196.80 (W)
 FL 12" = 196.80 (S)

Sta. 1+57.11 SWS Line 2
 B.L. Sta. 10+10.08 196.58' LT
 Install Type-2 Curb Inlet
 Top = 200.00
 FL 12" = 197.03 (N)



Baseline 10+00
 Northwest Corner
 of Property Line.

Benchmark:
 1. 500 Spike in South Face
 of Utility Pole, Approx. 27.5'
 N.E. of the N.W. Property
 Corner of Subject Property
 Elev. = 200.46 City Datum
 2. Top of Property Corner Iron
 at N.W. Corner, Lot 9, Block 1,
 The Gateway Center Addition.
 Elev. = 199.33 City Datum.



Sta. 0+00.00 SWS Line 1
 B.L. Sta. 10+10.08 98.32' LT
 Install 4" Manhole, Offset Cone
 Top = 199.84
 FL 12" (In) = 195.69 (W)
 FL 12" (In) = 195.69 (E)
 FL 15" (Out) = 195.44 (N)

Sta. 0+26.31 SWS Line 1
 B.L. Sta. 10+10.08 98.32' LT
 Ck. Inlet
 Top = Existing
 FL 15" = 195.33 (N)

210	Manhole	Line 3	Inlet	210	Manhole	Line 2	Inlet	210	Manhole	Line 1	Inlet	210
200		Ex. Ground		200		Ex. Ground		200		Ex. Ground		200
190		Prop. Pipe		190		Prop. Pipe	Ex. 8" SS	190		Prop. Pipe		190
		66.40 ft of 12" SWS @ 0.4%				98.77 ft of 12" SWS @ 0.4%	58.34 ft of 12" SWS @ 0.4%			26.31 ft of 15" SWS @ 0.4%		
		12" FL = 195.69				12" FL = 195.69	12" FL = 197.03			12" FL = 195.69		

BG Boltons
 Storm Sewer Improvements
 Wichita, KS

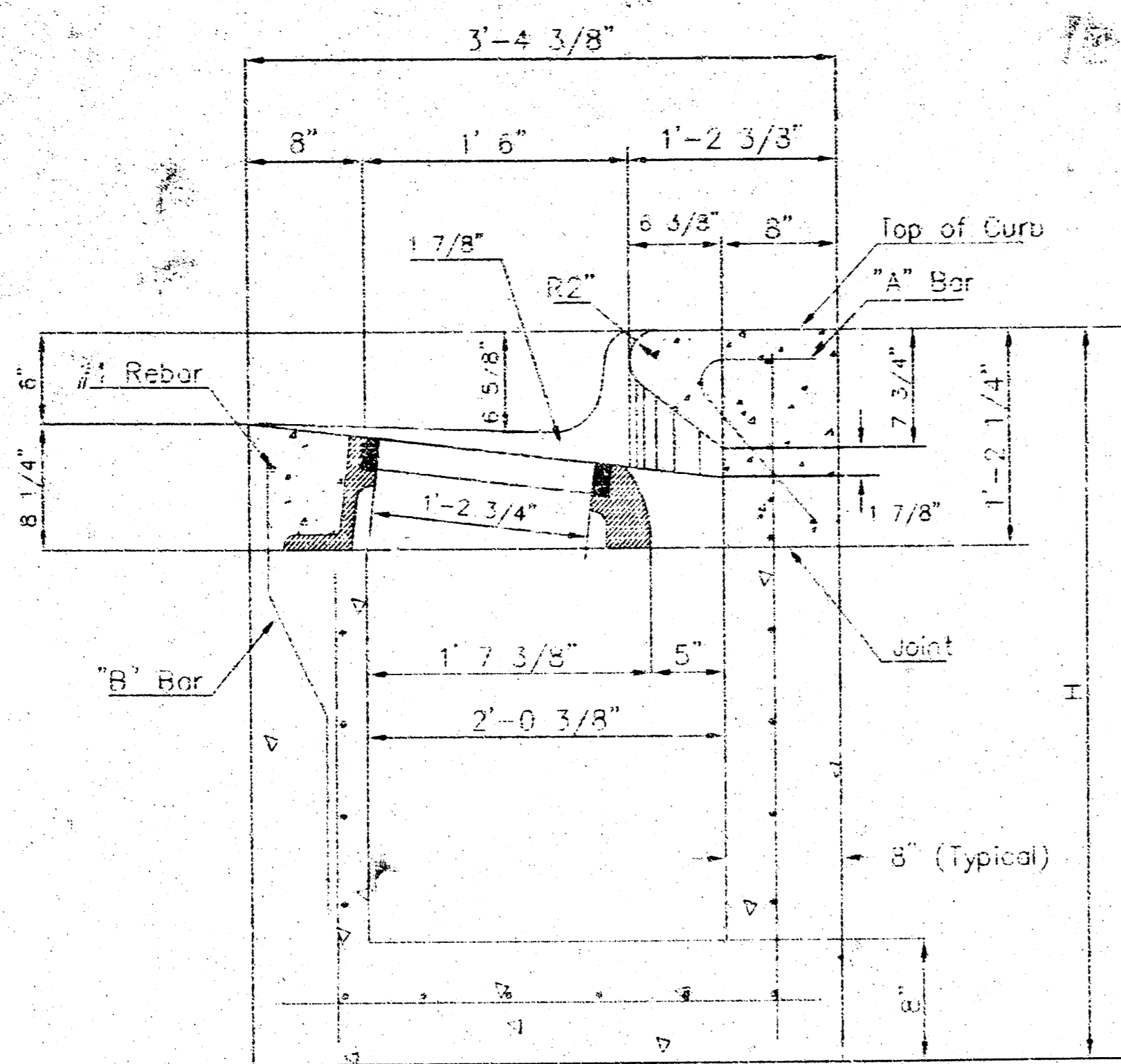
PROJECT NUMBER
 1535 PPS 607861

kemiller
 engineering

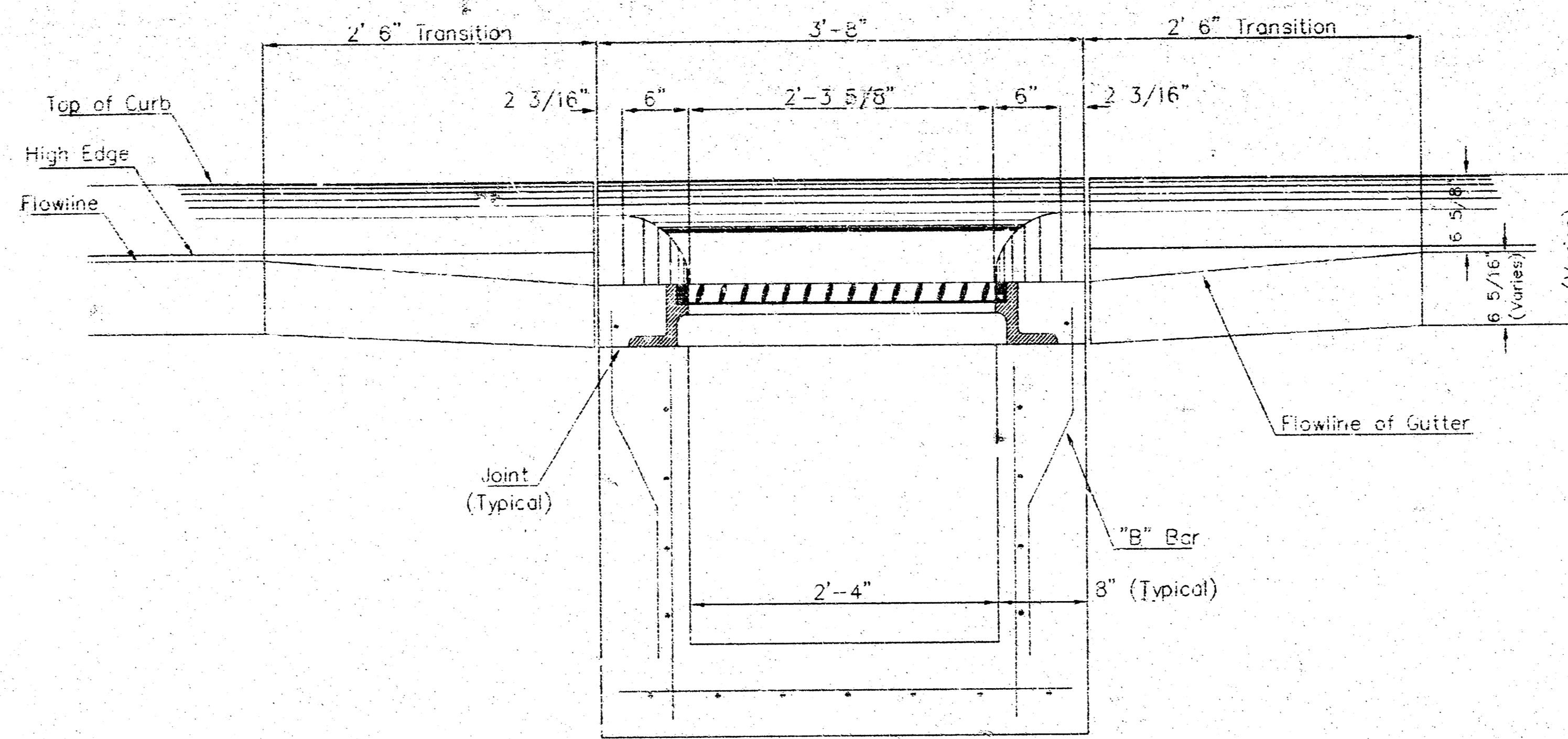
KEM NO. 05029	FILE pp21	DATE 2/2005	SHEET 2
DESIGN JM	DRAWN JQ	REVISED 3/2005	OF 3

516 S. Market
 Wichita, KS 67202

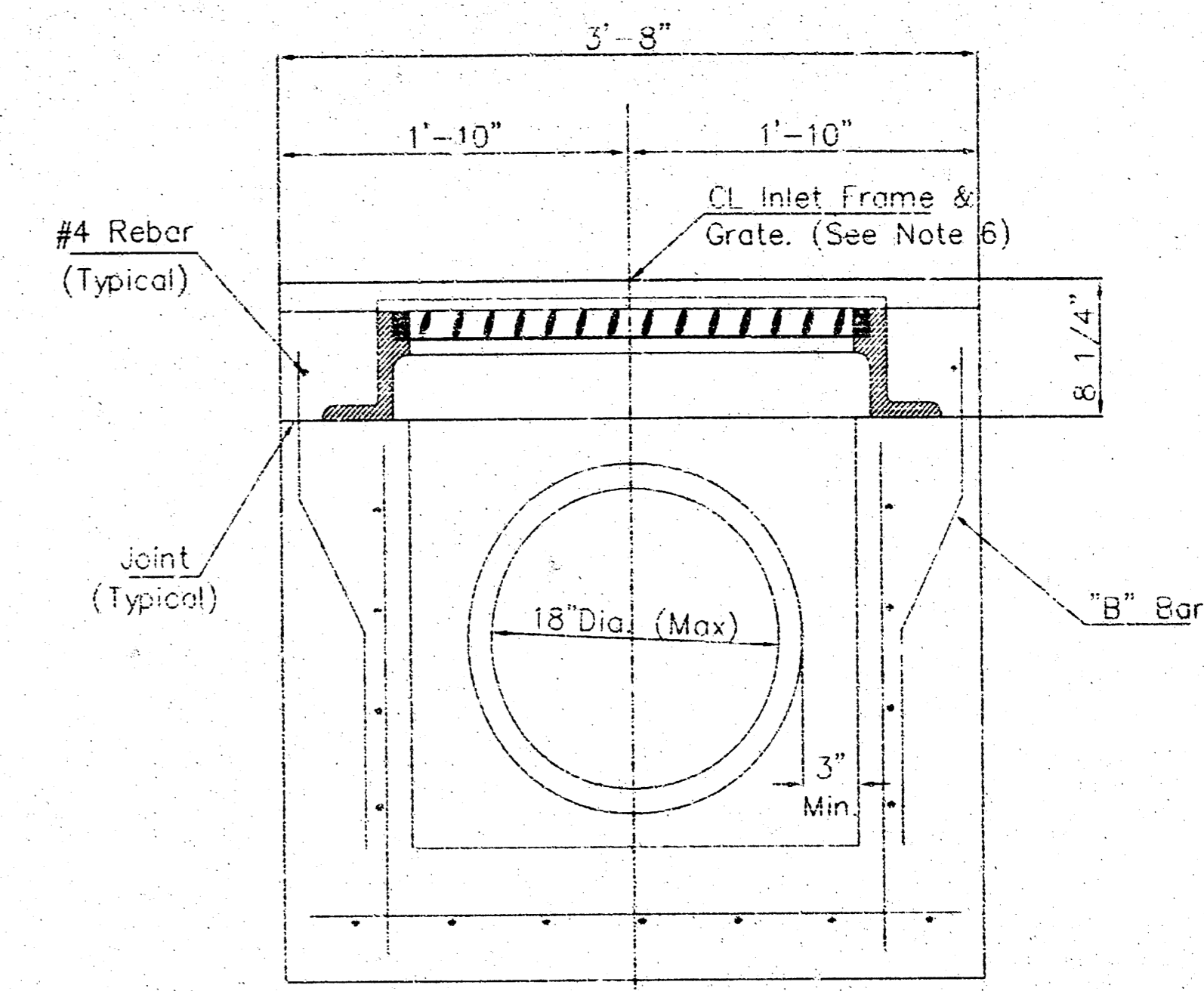
316/264-0342



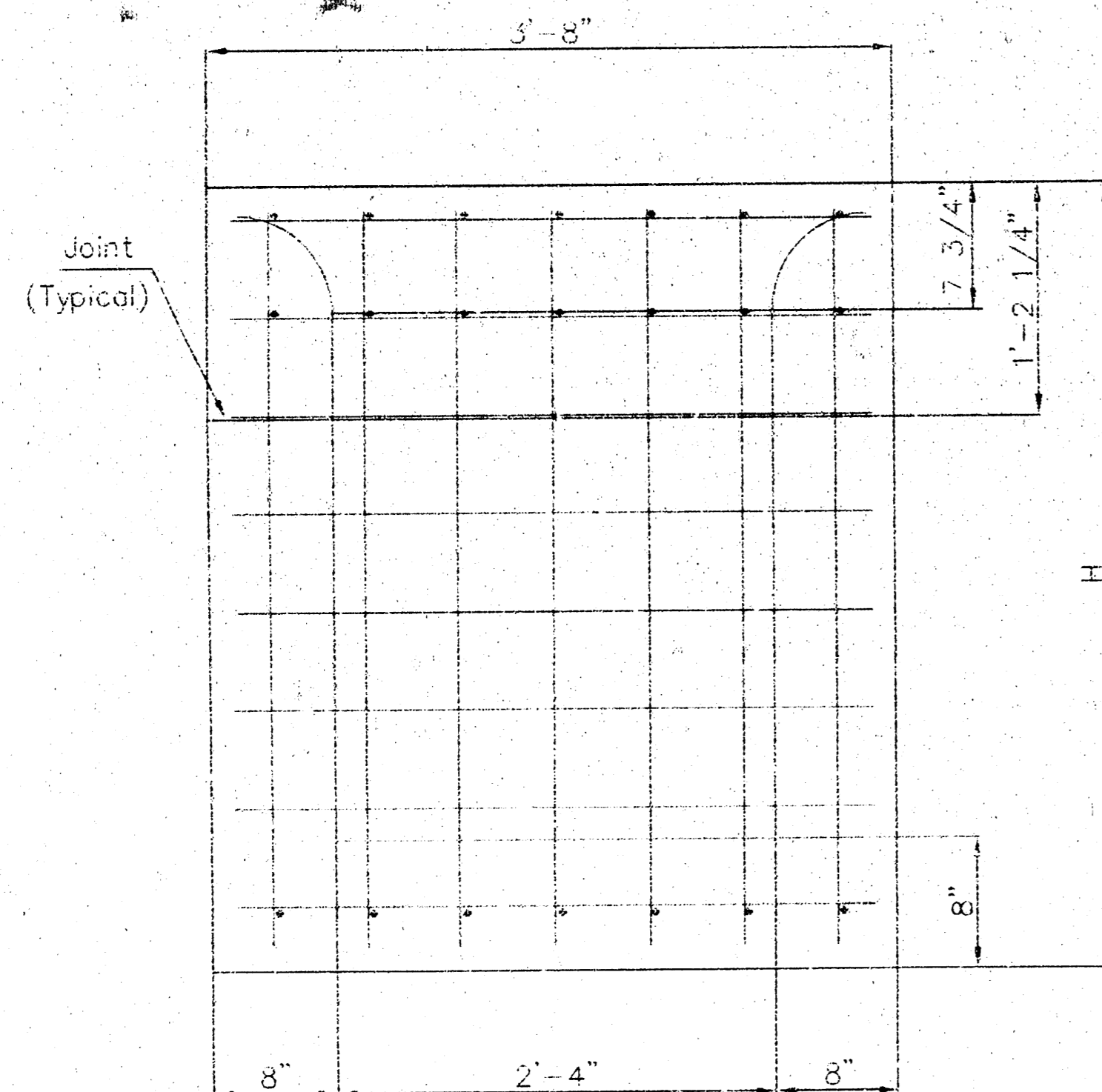
SECTION A-A



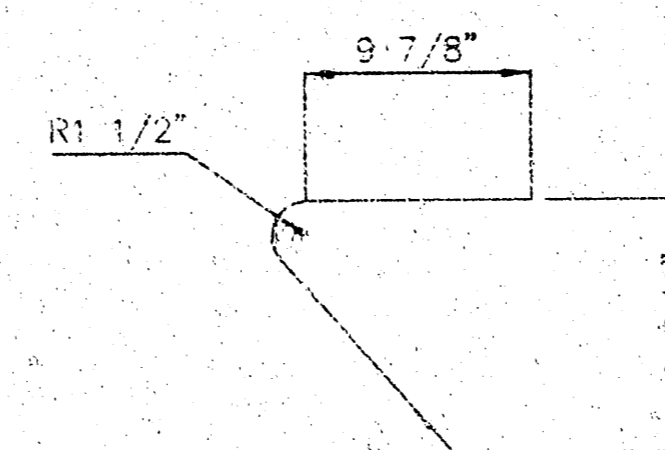
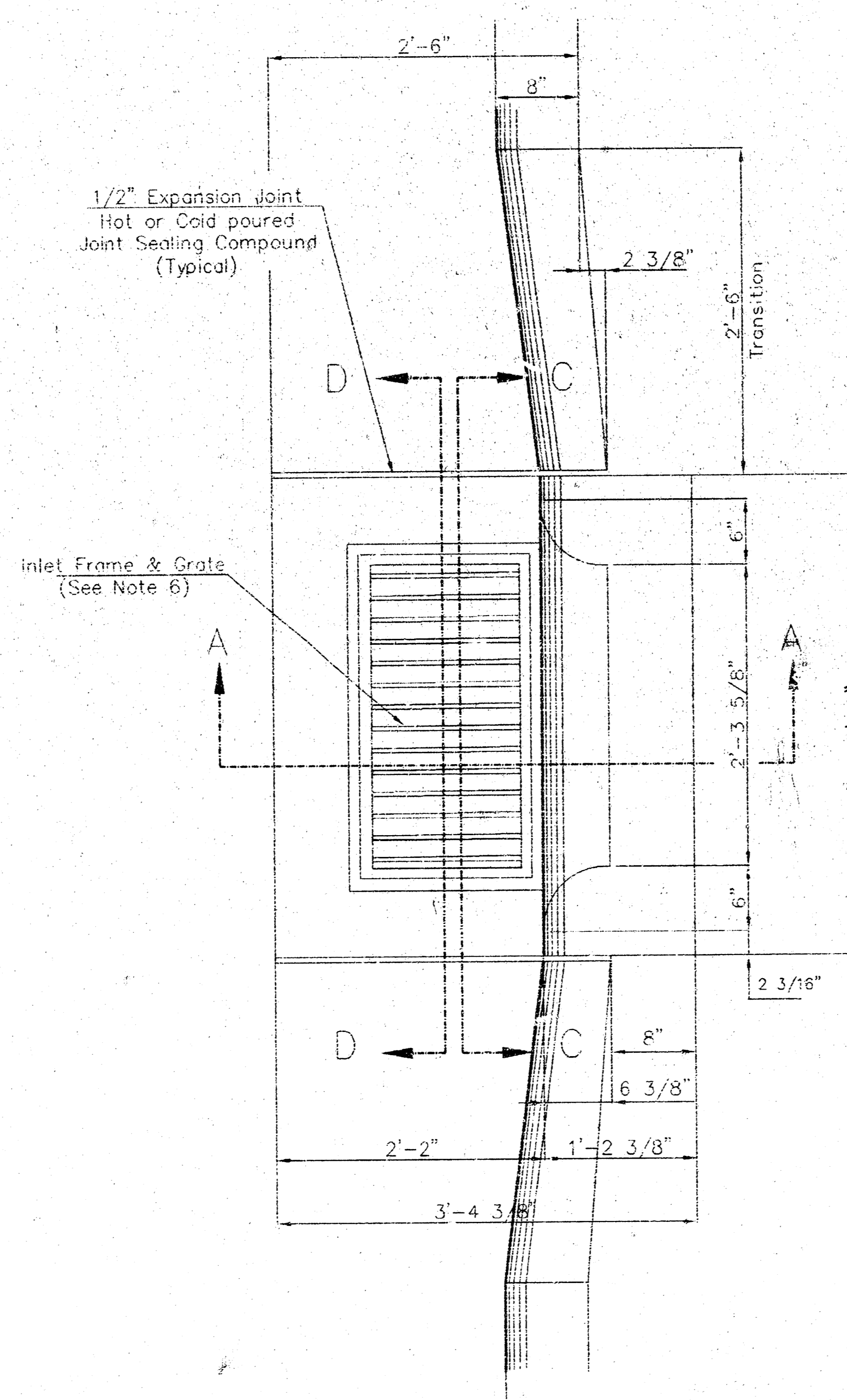
SECTION C-C



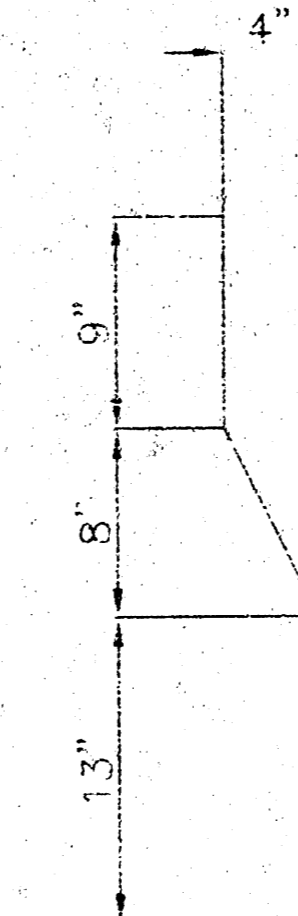
SECTION D-D



REAR WALL



"A" Bar



"B" Bar

General Notes

1. Use the concrete mix specified for the City of Wichita concrete pavement throughout. All exposed edges shall be finished with an edging tool. Reinforcing bars shall be bent around pipe.
2. Inlet invert shall be shaped with 8 sack mix concrete to create flow channels and to increase hydraulic efficiency such that the inlet will be self cleaning between all inlet and/or outlet pipes.
3. All bars are #4 with 6" spacing and shall have a minimum clearance of 1 1/2" inches unless otherwise noted on the plans.
4. When directed by the Engineer, a small opening may be required in the back of the inlet in order to drain a low area. Reinforcing bars will extend through the openings. No deductions in concrete quantities will be made for these openings.
5. No deductions will be made in pay length of curb, gutter, or curb and gutter through the inlet area.
6. Use Neenah R-3289 HV Single Inlet Frame and Grate or approved equal inlet frame to be proof load tested to 40,000 lbs. on unsupported side.
7. Reinforcing bars shall be cut or bent around pipes. No deduction in concrete quantities shall be made for pipe openings.
8. The vanes of the grate shall be oriented with respect to the flow arrows shown on the plans.

<p>THE CITY OF WICHITA</p> <p>CITY ENGINEER'S OFFICE CITY HALL - SEVENTH FLOOR 445 NORTH MAIN STREET WICHITA, KANSAS 67202 (316) 255-4201 (316) 266-6114 FAX</p>	<p>STANDARD TYPE II CURB INLET INLET OPENING = 6" x 2'-3 5/8"</p>		
	<p>JIM ARMOUR P.E. - ACTING CITY ENGINEER</p>		
	<p>PROJECT NUMBER XXX-XXXX</p>	<p>INDEX CODE XXXXXX</p>	
	<p>DATE MAR 96</p>	<p>SHEET 3 OF 3</p>	