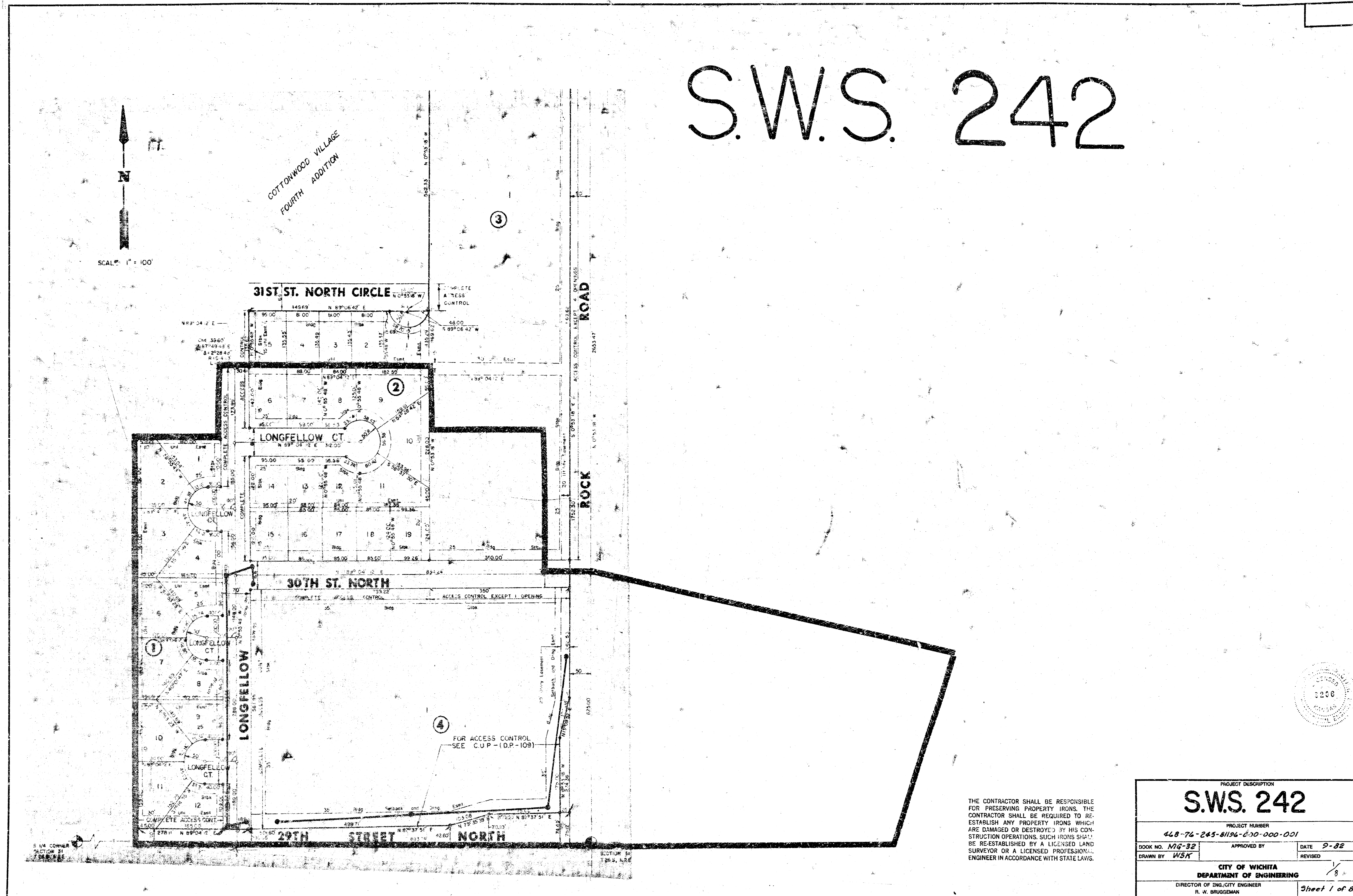


S.W.S. 242

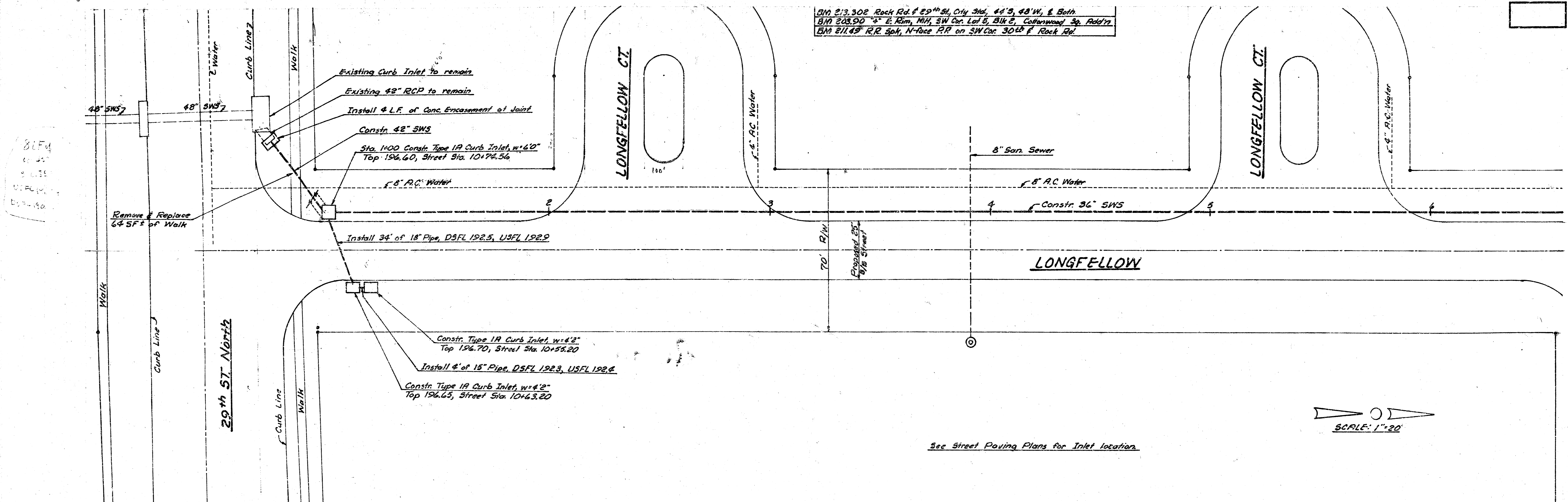


THE CONTRACTOR SHALL BE RESPONSIBLE FOR PRESERVING PROPERTY IRONS. THE CONTRACTOR SHALL BE REQUIRED TO RE-ESTABLISH ANY PROPERTY IRONS WHICH ARE DAMAGED OR DESTROYED BY HIS CONSTRUCTION OPERATIONS. SUCH IRONS SHALL BE RE-ESTABLISHED BY A LICENSED LAND SURVEYOR OR A LICENSED PROFESSIONAL ENGINEER IN ACCORDANCE WITH STATE LAWS.

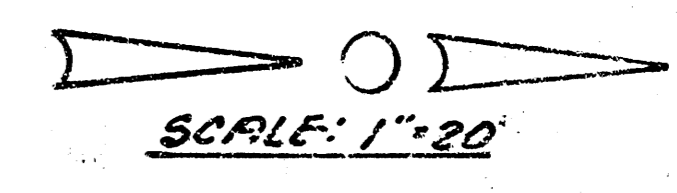
PROJECT DESCRIPTION	
S.W.S. 242	
PROJECT NUMBER 448-76-245-81196-0-10-000-001	
BOOK NO. <i>MG-32</i>	APPROVED BY _____ DATE <i>9-82</i>
DRAWN BY <i>WSK</i>	REVISED _____
CITY OF WICHITA DEPARTMENT OF ENGINEERING	
DIRECTOR OF ENG./CITY ENGINEER R. W. BRUGEMAN	Sheet 1 of 8

FILMED FROM THE BEST AVAILABLE COPY

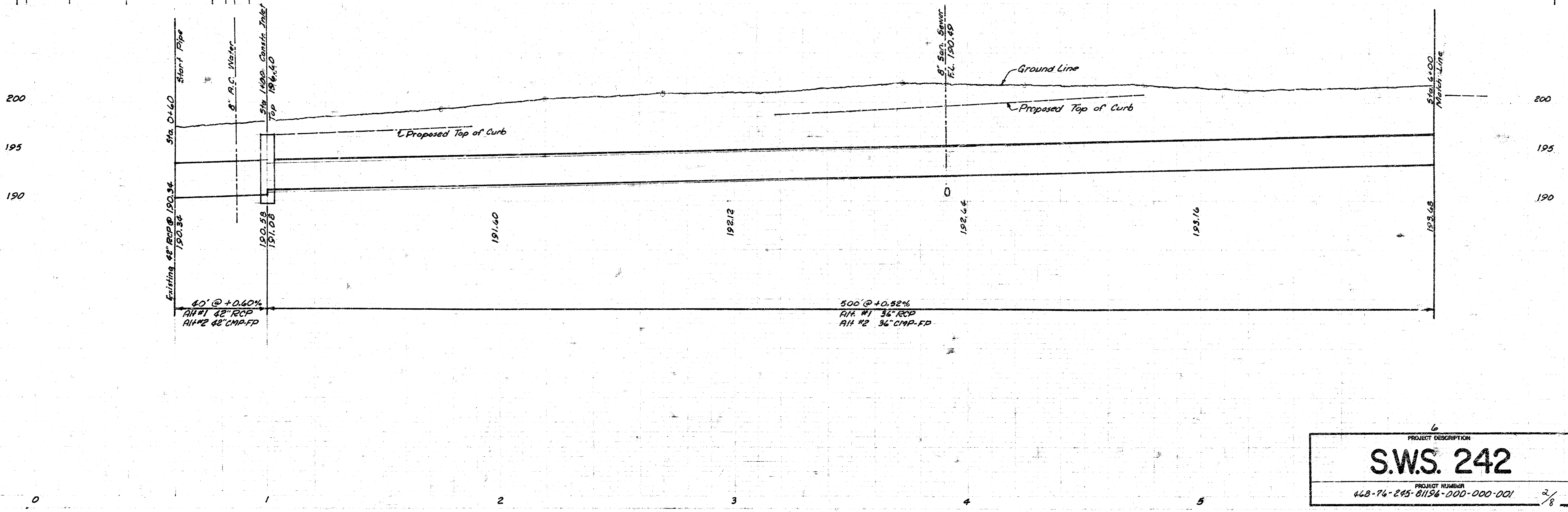
BM 213.302 Rock Rd. f 29th St, City 3rd, 41' 3", 48' W, E. 80th
 BM 208.590 5th E. Elm, NW SW Cor. Lot 5, Blk 2, Cottonwood Sp. Add'n
 BM 211.45⁺ RR Split, N-face RR on SW Cor. 30th f Rock Rd.



81F4
 10/22
 S. L. T.
 U.P.C.
 10/24/90

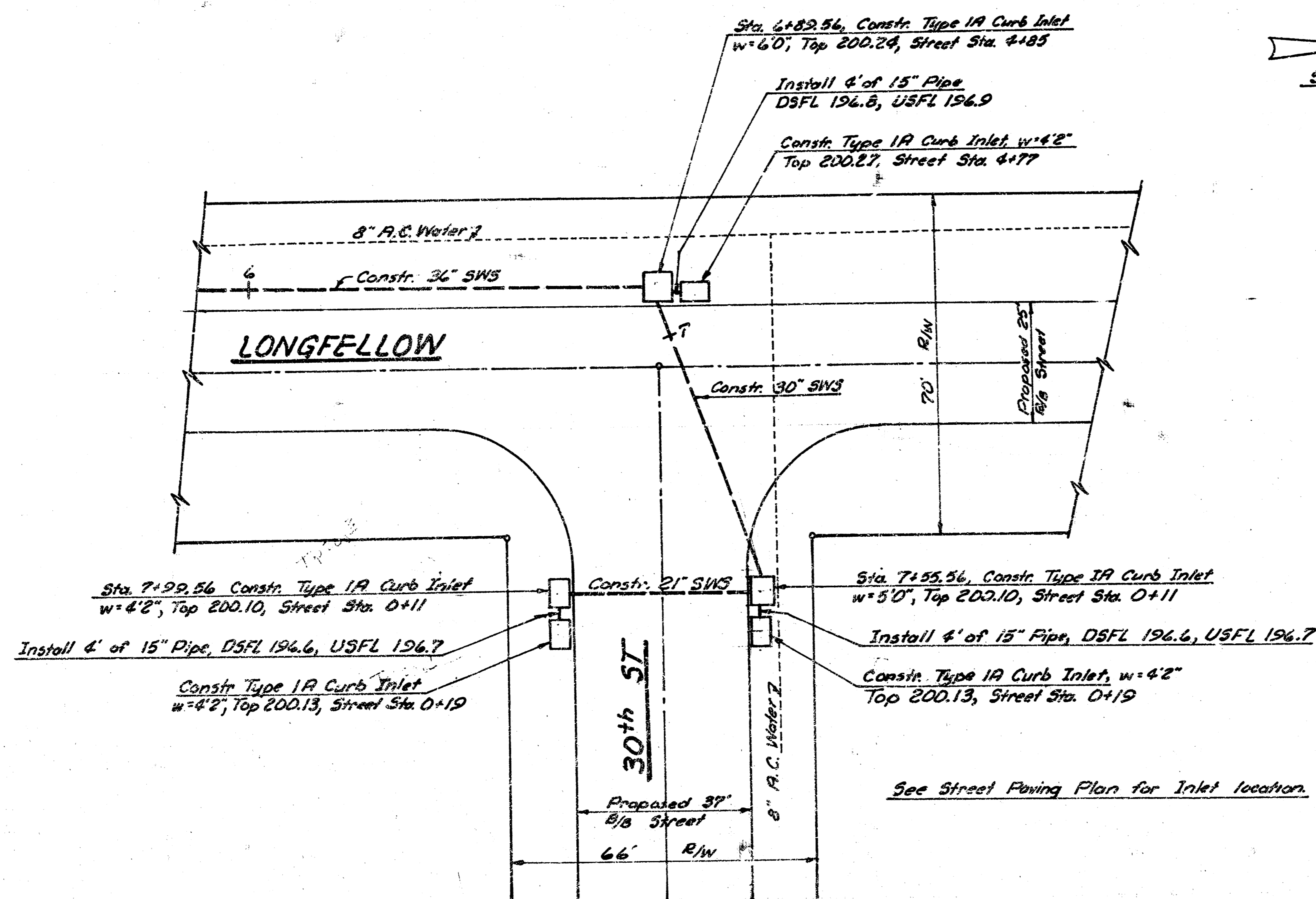
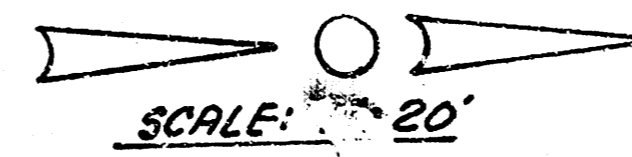


See Street Paving Plans for Inlet Location

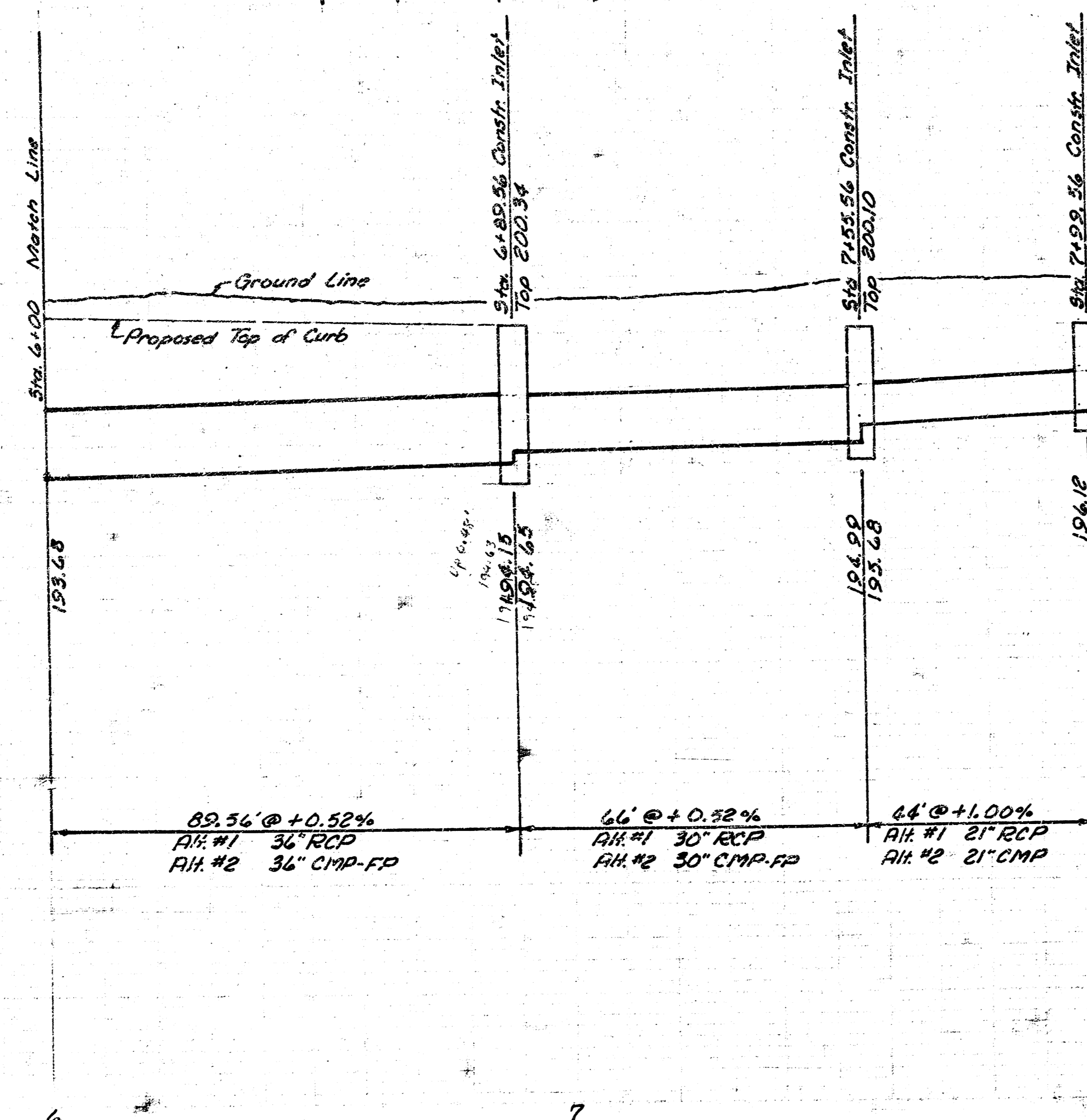


PROJECT DESCRIPTION	
S.W.S. 242	
PROJECT NUMBER	
468-76-245-81156-000-000-001	
2/8	
Sheet 2 of 8	

BM See Sheet 2



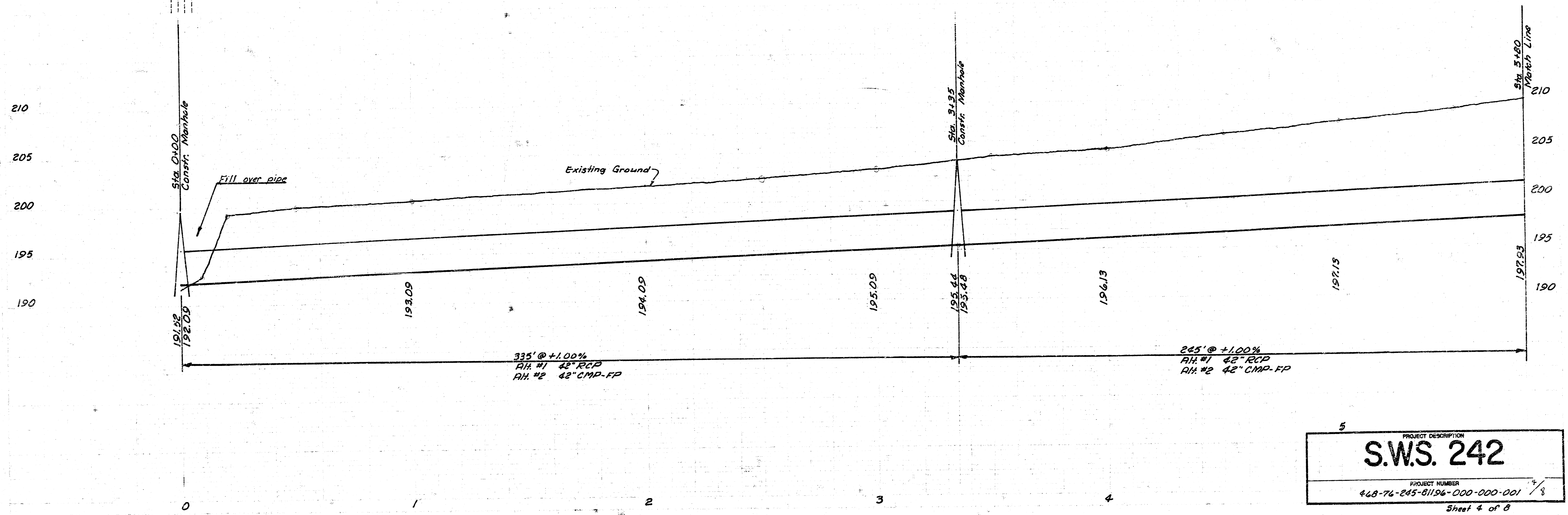
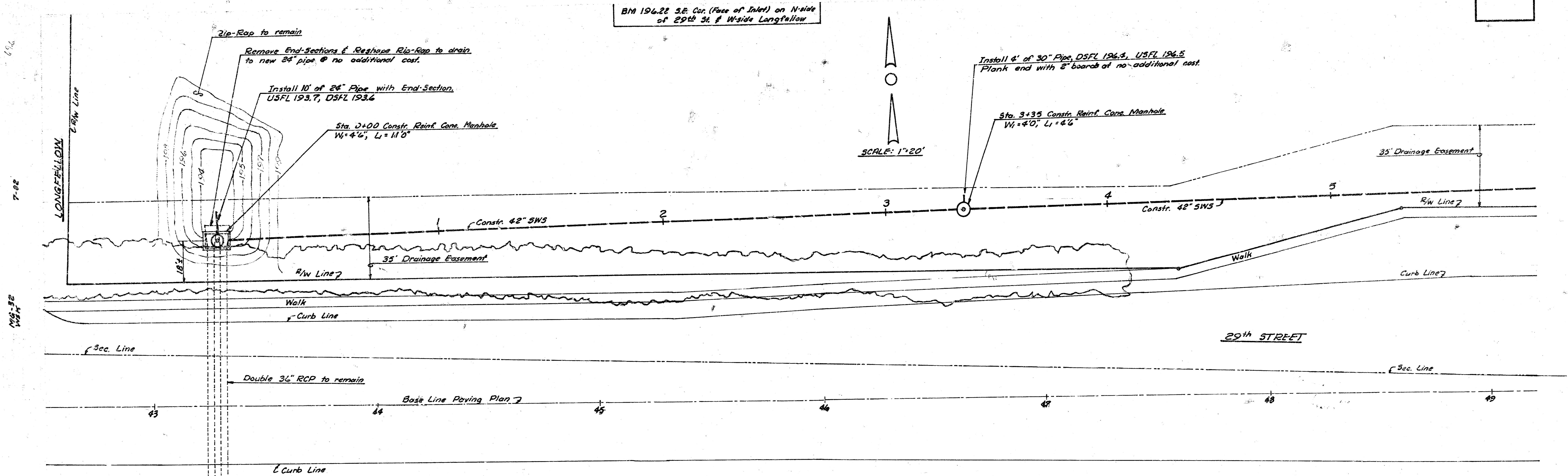
200
195
190



200
195
190

PROJECT DESCRIPTION	
S.W.S. 242	
PROJECT NUMBER	
468-76-245-81196-000-000-001 3/8	
Sheet 3 of 8	

FILMED FROM THE BEST AVAILABLE COPY



5

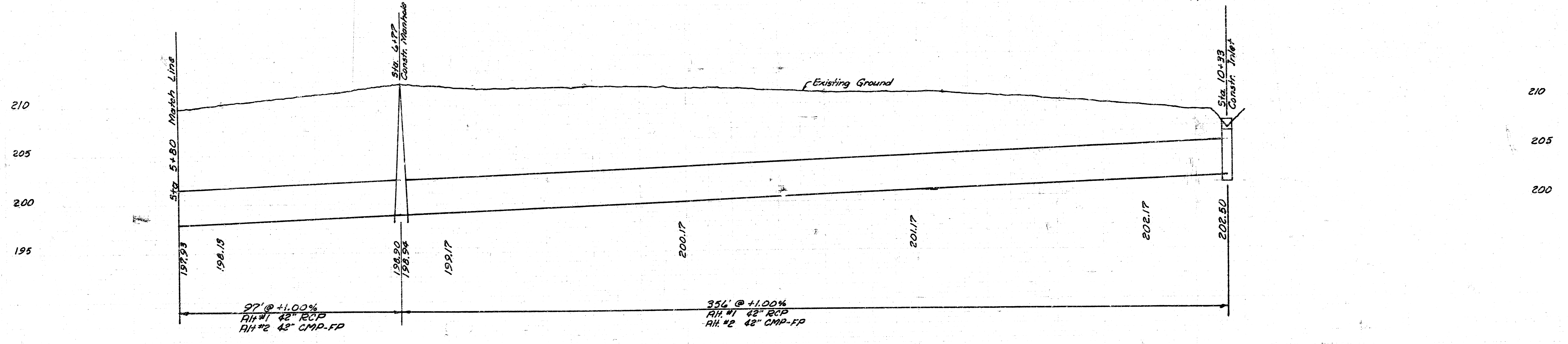
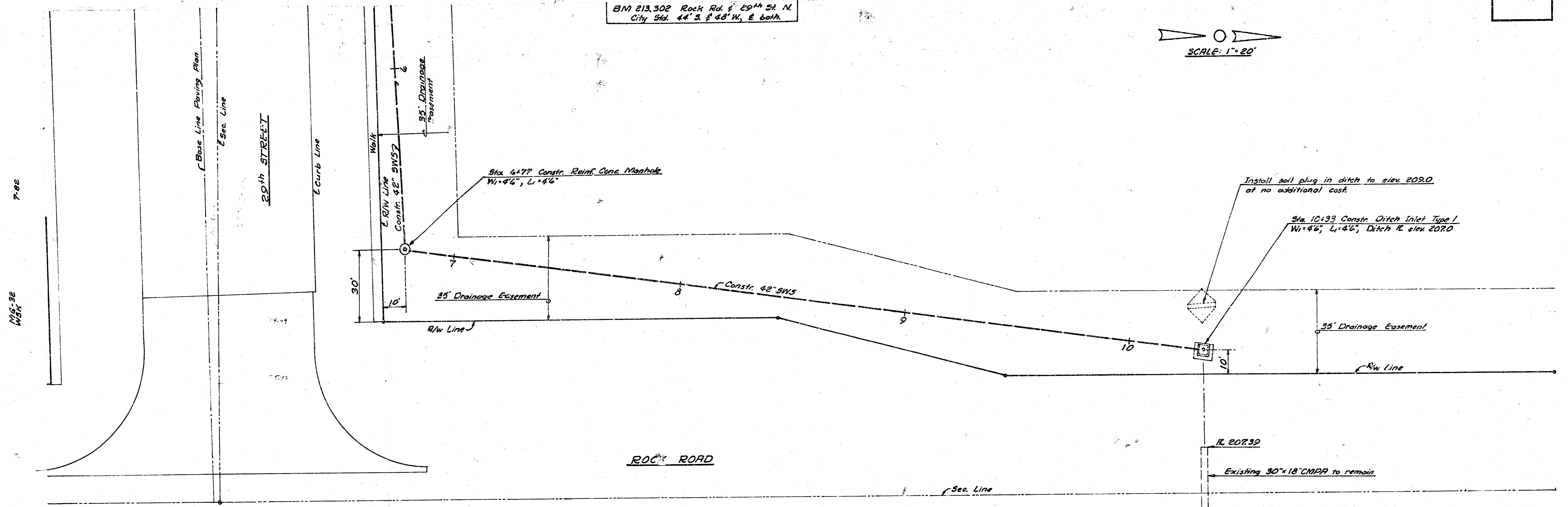
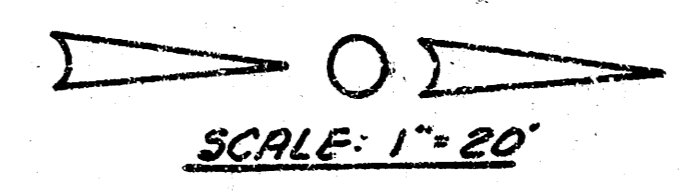
PROJECT DESCRIPTION
S.W.S. 242

PROJECT NUMBER
468-76-245-81196-000-000-001 7/8

Sheet 4 of 8

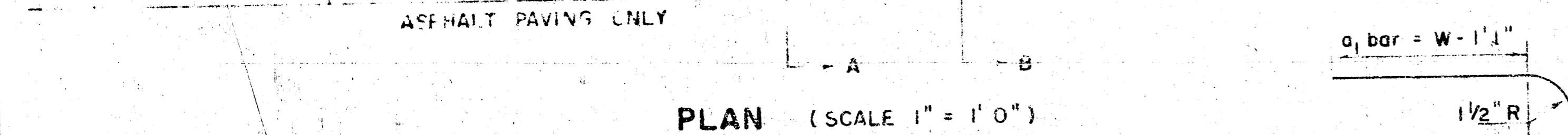
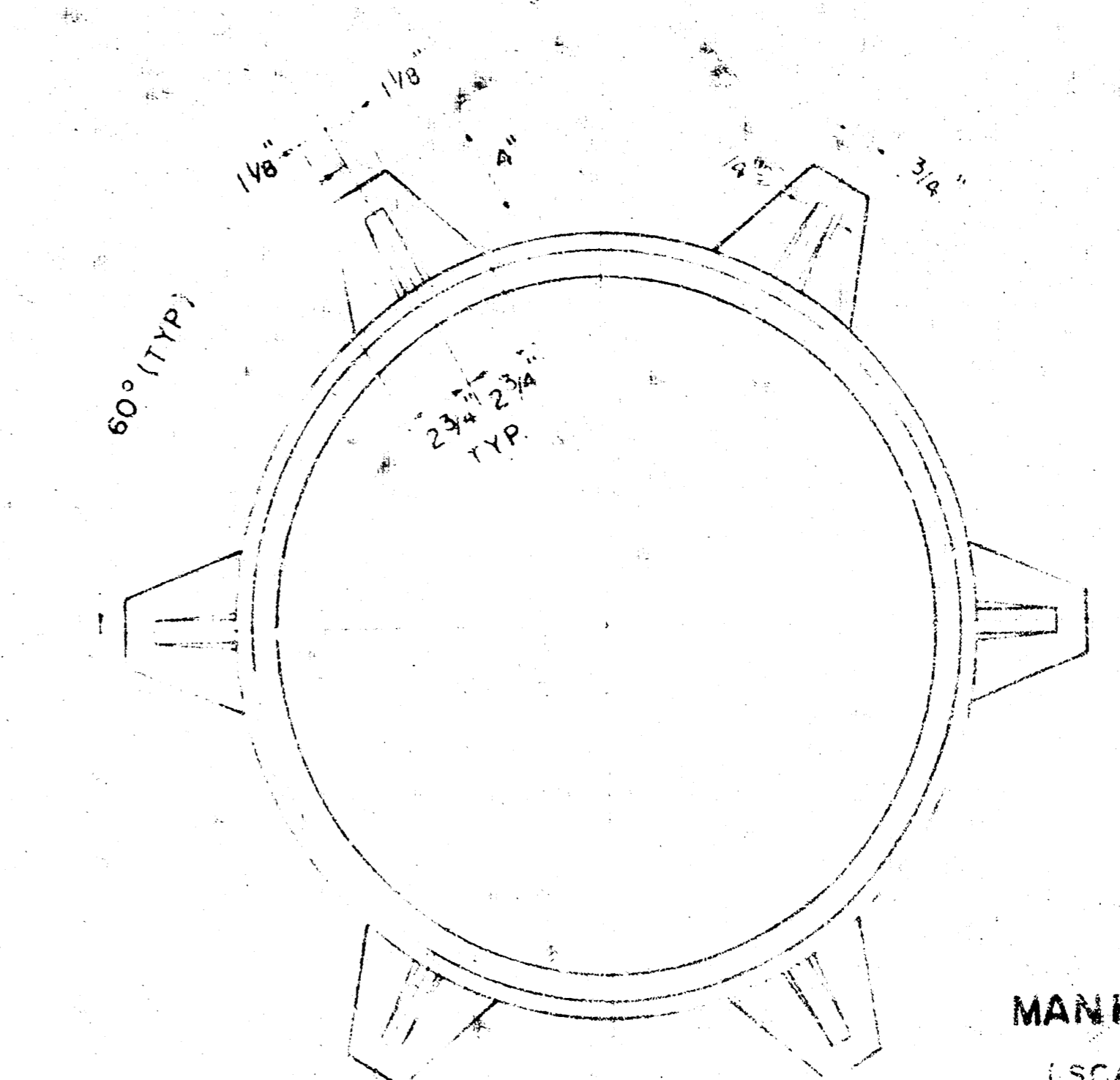
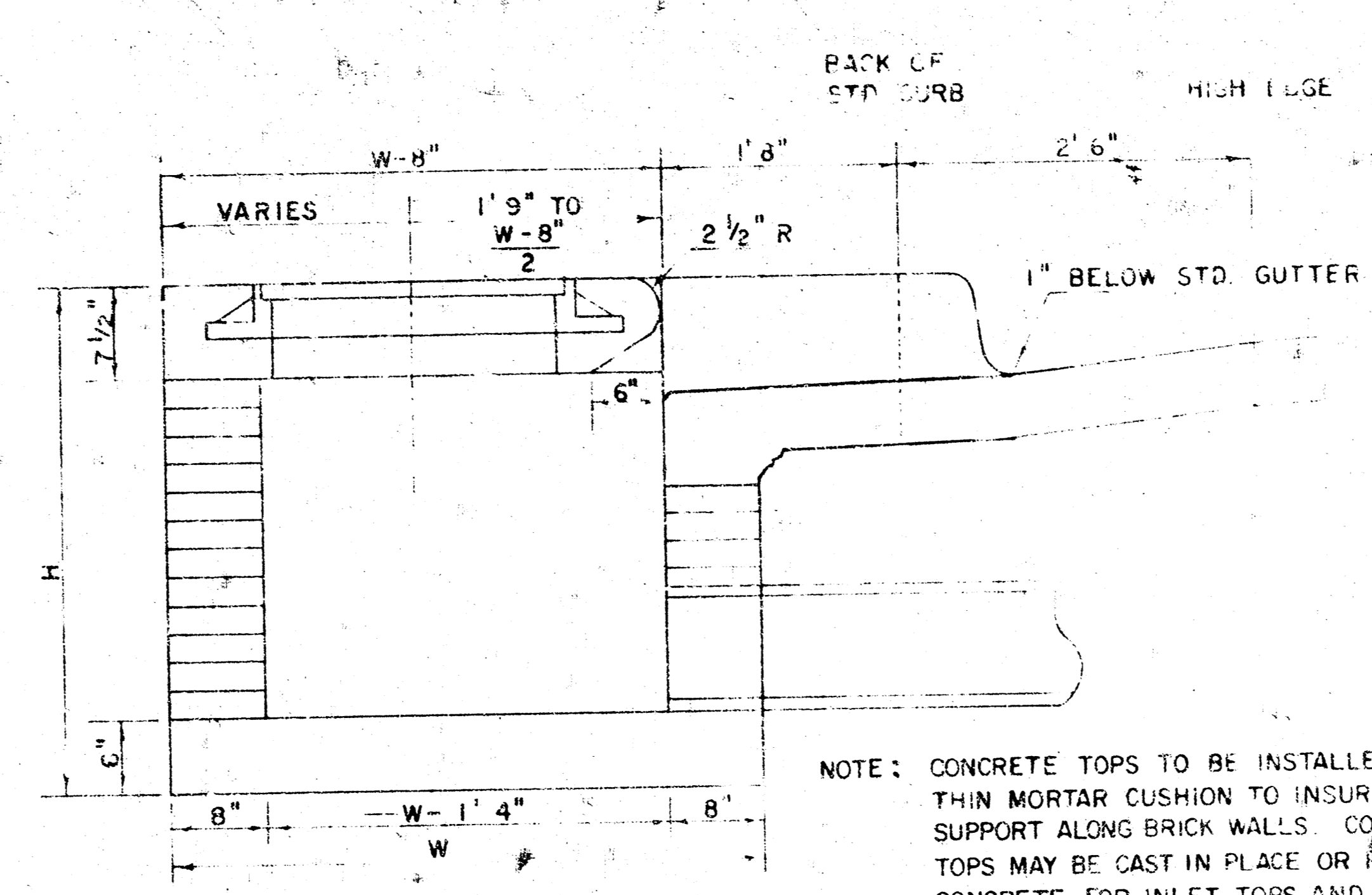
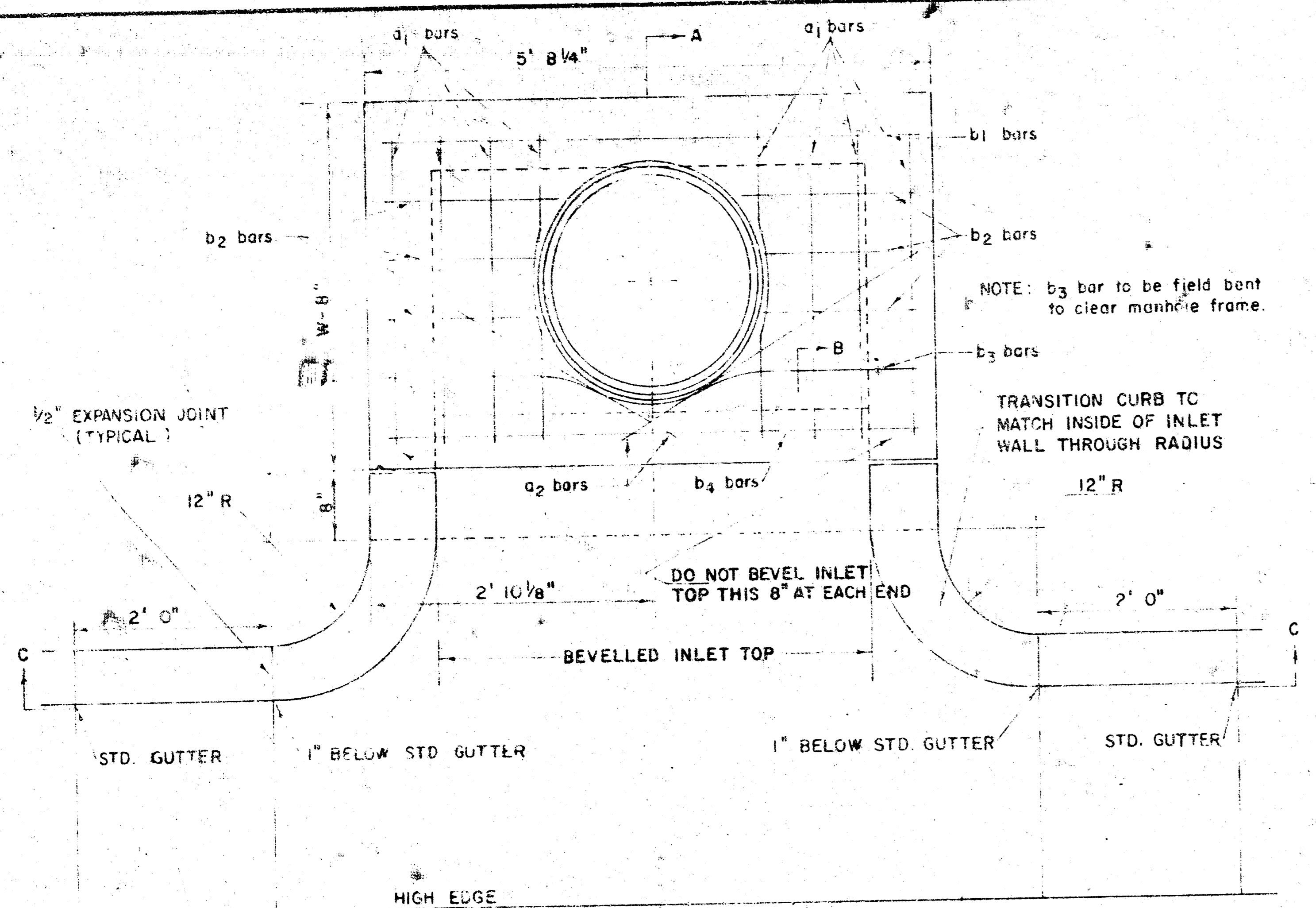
FILMED FROM THE BEST

BM 213.302 Rock Rd. @ 29th St. N.
City Sta. 44° 3' 48" W, E 60th.

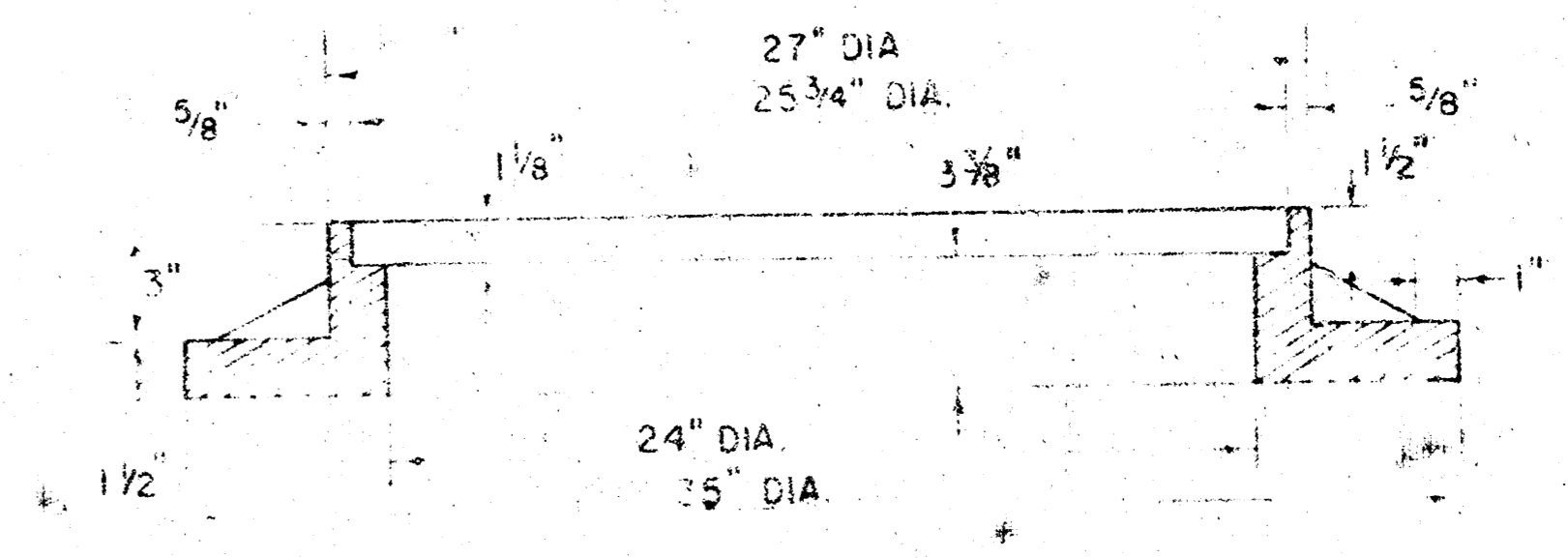


PROJECT DESCRIPTION
S.W.S. 242
 PROJECT NUMBER
 448-76-245-81196-000-001 5/8
 Sheet 5 of 8

FILMED FROM THE BEST



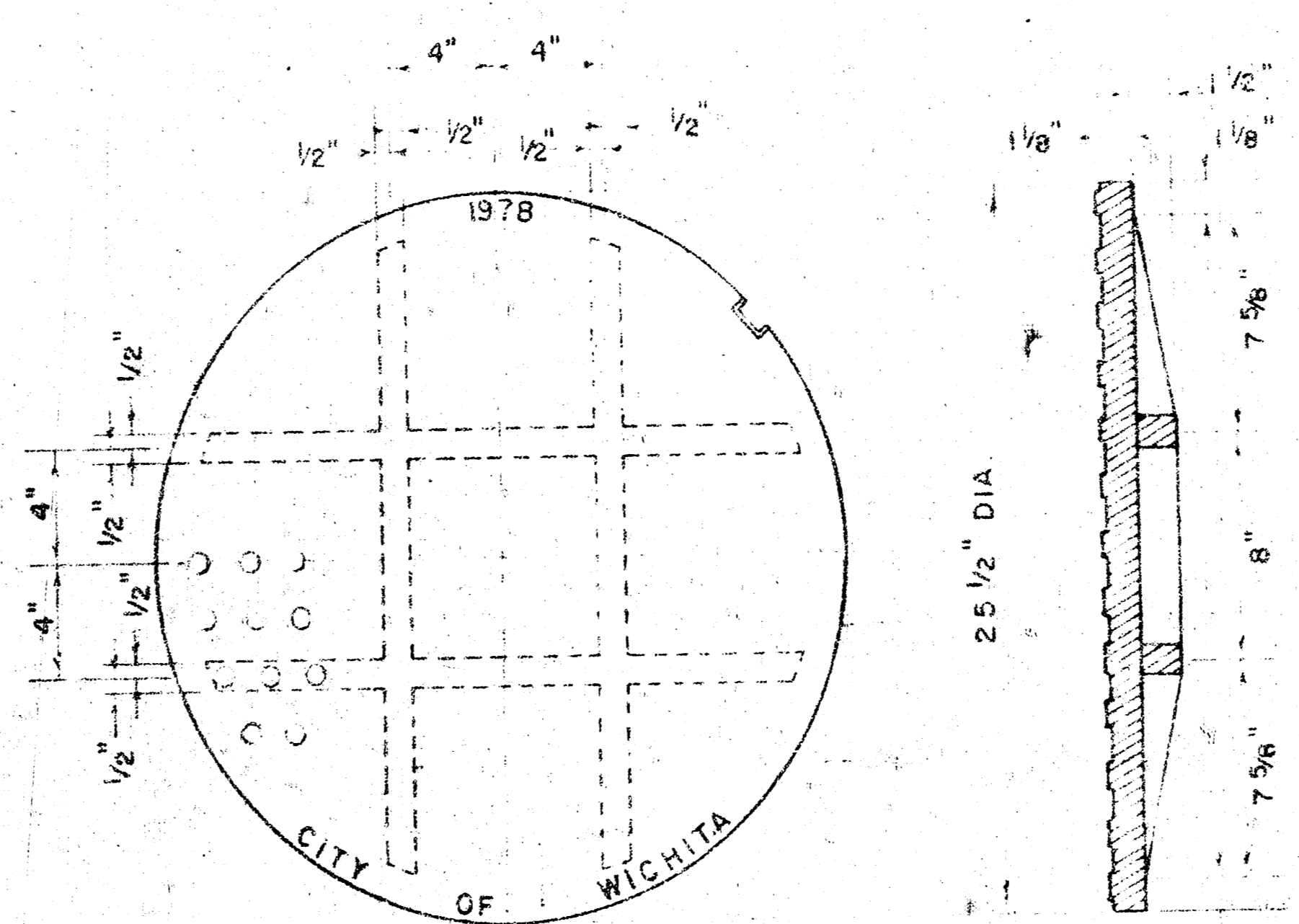
SECTION A-A
(SCALE 1" = 1'0")



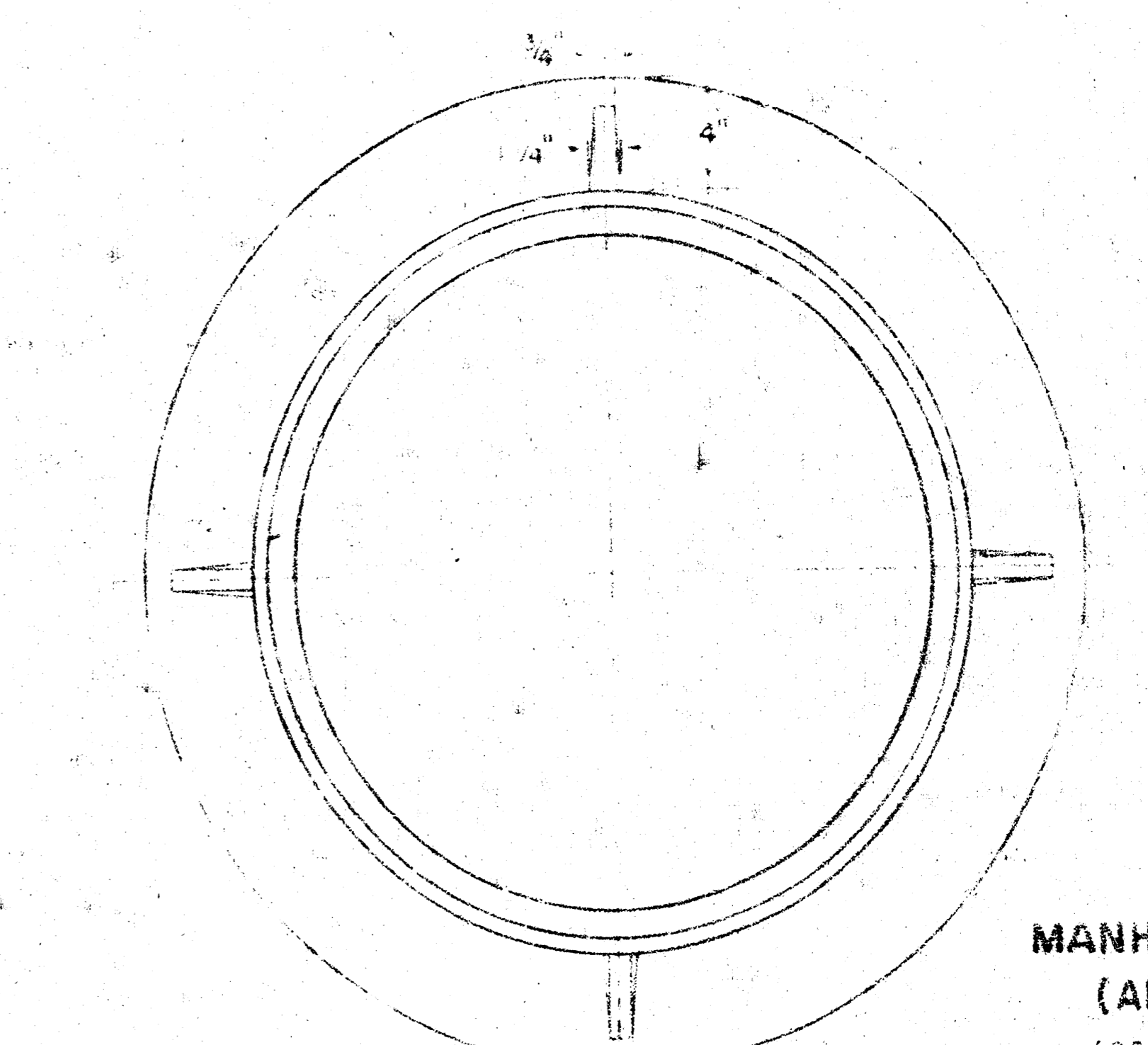
STEEL SCHEDULE

BAR NUMBER	a_1	a_2	b_1	b_2	b_3	b_4	WT. LBS.
1	8	2	1	3	5	7	9
2	4	4	4	4	4	4	4
3	4	4	4	4	4	4	4
4	4	4	4	4	4	4	4
5	4	4	4	4	4	4	4
6	4	4	4	4	4	4	4
7	4	4	4	4	4	4	4
8	4	4	4	4	4	4	4
9	4	4	4	4	4	4	4
10	4	4	4	4	4	4	4
11	4	4	4	4	4	4	4
12	4	4	4	4	4	4	4

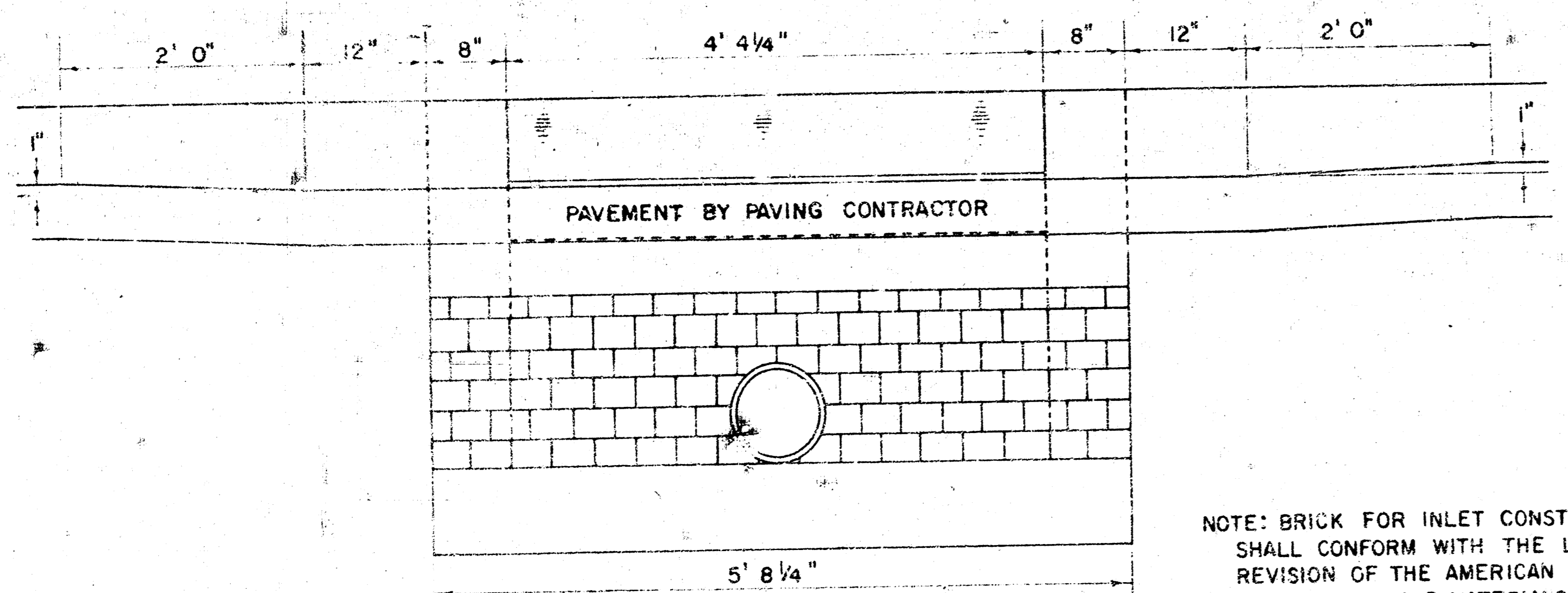
BENDING DIAGRAM



MANHOLE COVER
(SCALE 1" = 6")
WEIGHT = 170 LBS.

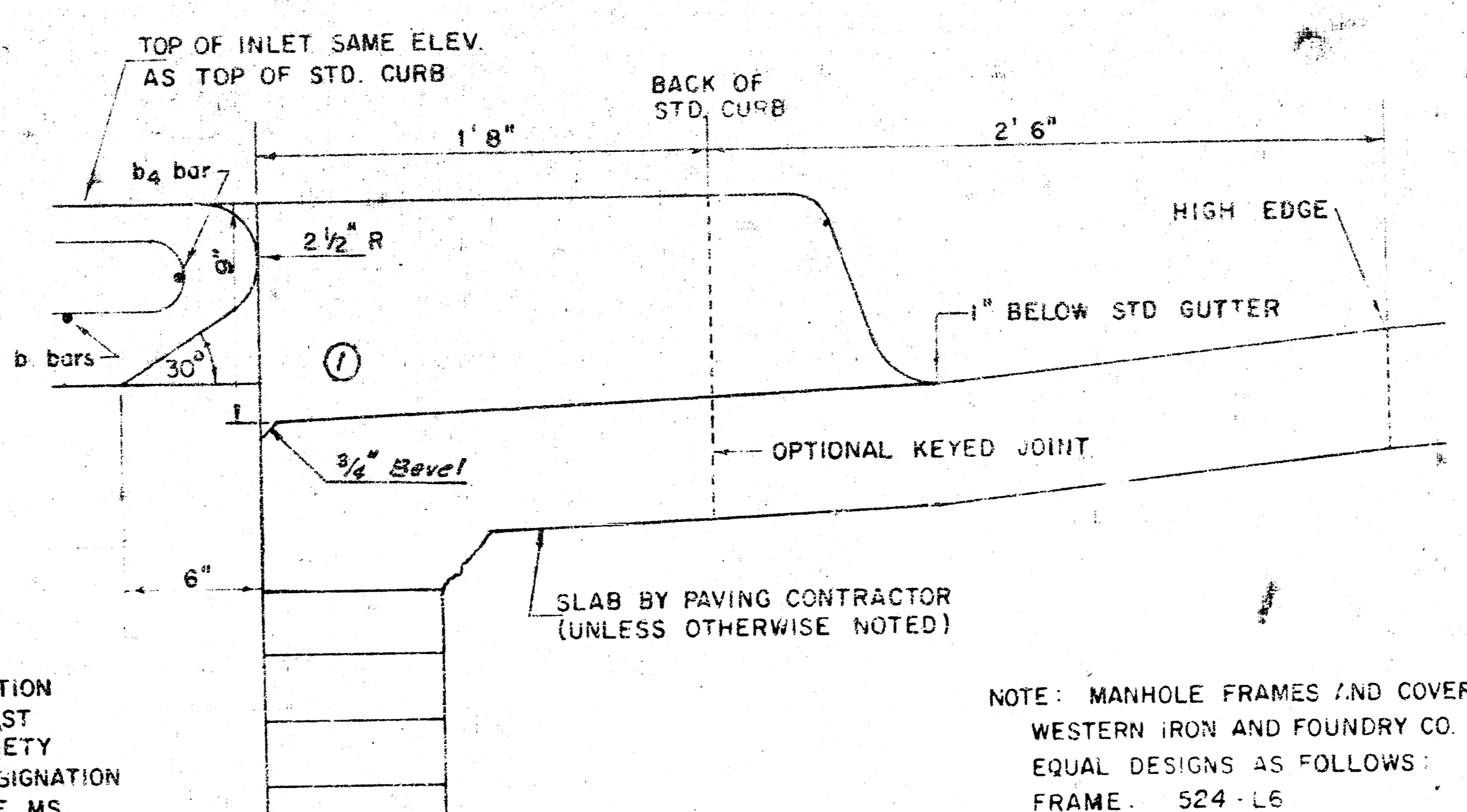


* NOTE: a_2 BARS TO BE PLACED APPROX. 2" BELOW TOP OF INLET COVER



SECTION C-C
(SCALE 1" = 1'0")

NOTE: BRICK FOR INLET CONSTRUCTION SHALL CONFORM WITH THE LATEST REVISION OF THE AMERICAN SOCIETY FOR TESTING AND MATERIALS DESIGNATION C-32 FOR MANHOLE BRICK GRADE MS.



SECTION B-B
(SCALE 1" = 6")

NOTE: MANHOLE FRAMES AND COVER ARE WESTERN IRON AND FOUNDRY CO. INC. OR EQUAL DESIGNS AS FOLLOWS:
FRAME: 524-L6
FRAME (ALTERNATE): 500-A4
COVER: 222-S4 'NOBBY'

S.W.S. 242
Rev. 5-18-81
DETAIL STANDARD TYPE IA CURB INLET
CITY OF WICHITA, KANSAS
R.W. BRUGGEMAN, DIRECTOR OF ENGINEERING/
CITY ENGINEER
JUNE, 1981
Sheet 4 of 8/8

