

# STORM SEWER PLANS FOR WILDERNESS ADDITION

S.W.S. NO. 256  
PROJECT NO.

468-76-245-81306-000-000-001

CITY OF WICHITA, KANSAS  
MIKE LINDEBAK, CITY ENGINEER  
SEPT. , 1983

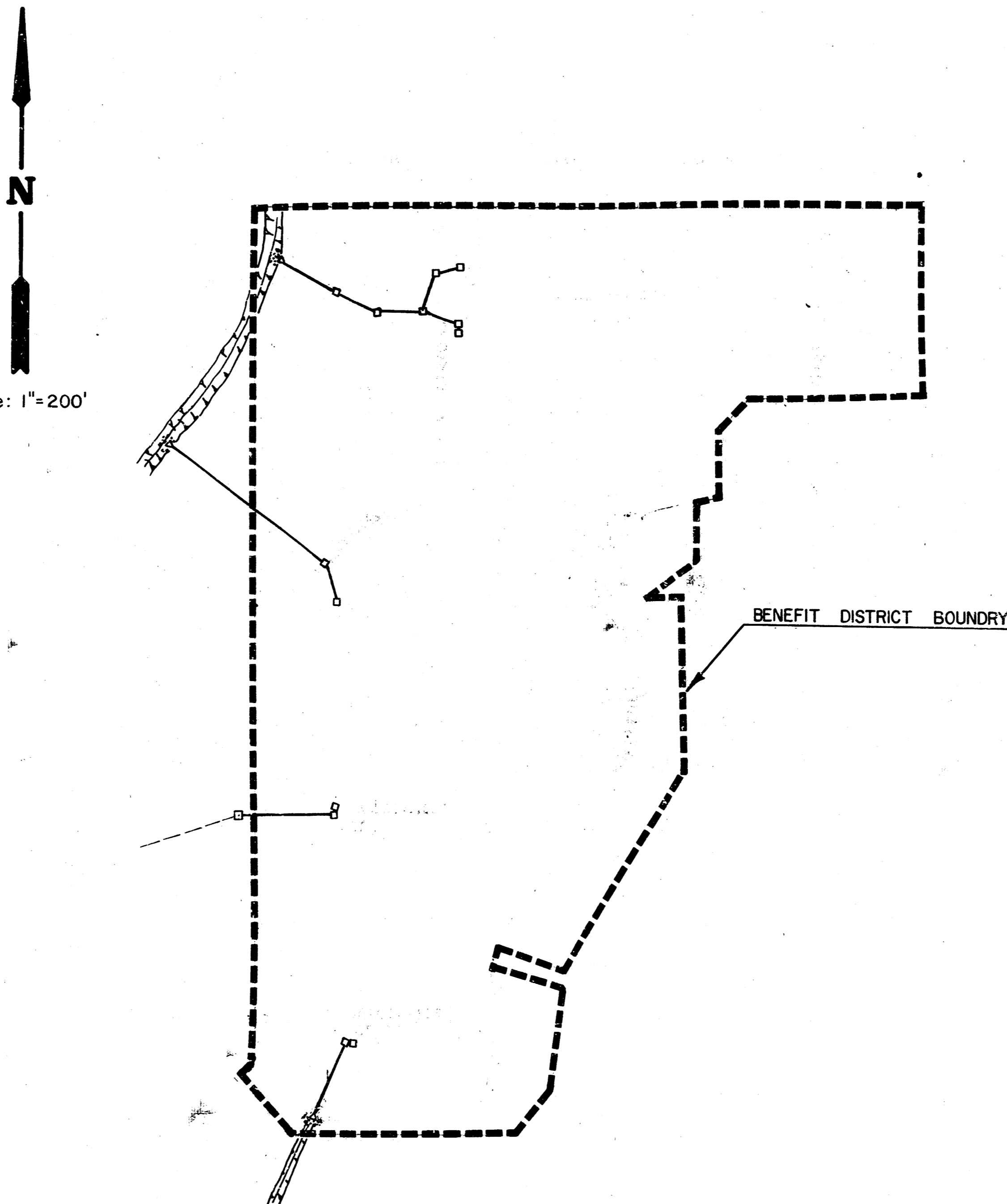
### GENERAL NOTES

1. The Contractor shall be responsible for preserving property irons. The Contractor shall be required to re-establish any property irons which are damaged or destroyed by his construction operations. Such irons shall be re-established by a licensed land surveyor or a licensed professional engineer in accordance with state laws.
2. The tops of inlets and manholes as noted on the plans may vary so as to meet proposed top of curb elevations or pavement elevations. The Field Engineer shall locate inlets and manholes with reference to proposed paving plans of the pertinent streets.
3. All concrete shall be Standard Paving Mix unless otherwise noted.
4. The riprap for this project shall be type 3. The type 3 riprap shall be 12" riprap. The rock for riprap and gravel protection shall be hard, dense, durable and shall be reasonably well graded. The size range of rock used shall be a maximum of one cubic foot and a minimum of 1 1/2".
5. Contractor shall avoid uncovering existing water lines unless absolutely necessary. Uncovering shall be done only in the presence of a Water Department Engineer.

### BENCH MARKS

- B.M. = 213.02 City of Wichita B.M. Disc. 44' S. & 48" W. of Rock Rd. & 29th St. N.
- B.M. = 232.82 R.R. Spk. S. Fc. P.P.N. Side 29th St. N. 800' E. of Rock Rd.
- B.M. = 211.83 R.R. Spk. S.W. Fc. Hedge Tree N. Side 29th St. & 1/2 E. of Rock Rd.
- B.M. = 211.44 C. of W. B.M. Disc. 24.5' N. & 9.0' W. of 1/4 Sec. Cor. 1/2 Mile E. of Rock Rd. on 29th
- B.M. = 225.47 R.R. Spk. P.P.N. Side 29th St. & 1300' W. of Webb Rd.
- B.M. = 220.526 Webb Rd. & 29th St. of W.B.M. Disc. 44' N. & 38' W. of C.I. Both

Scale: 1"=200'



### INDEX TO DRAWINGS

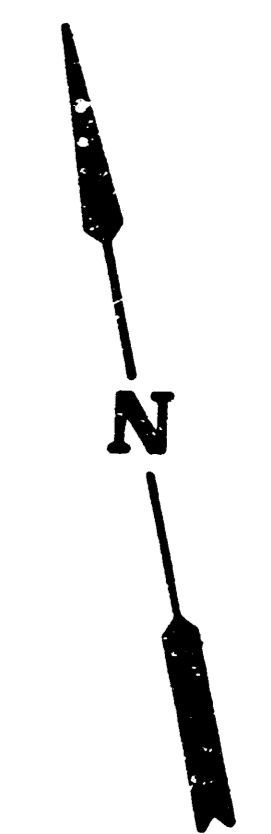
SHEET NO.	DESCRIPTION
1	TITLE SHEET
2	LINE 1 & 2
3	LINE 3
4	LINE 4
5	LINE 5 & 8 DITCH INLET DETAILS
6	CURB INLET DETAILS
7	FINAL PLAT
7A	DROP INLET DETAILS

*AS BUILT PLAN  
4-6-84  
MCG*



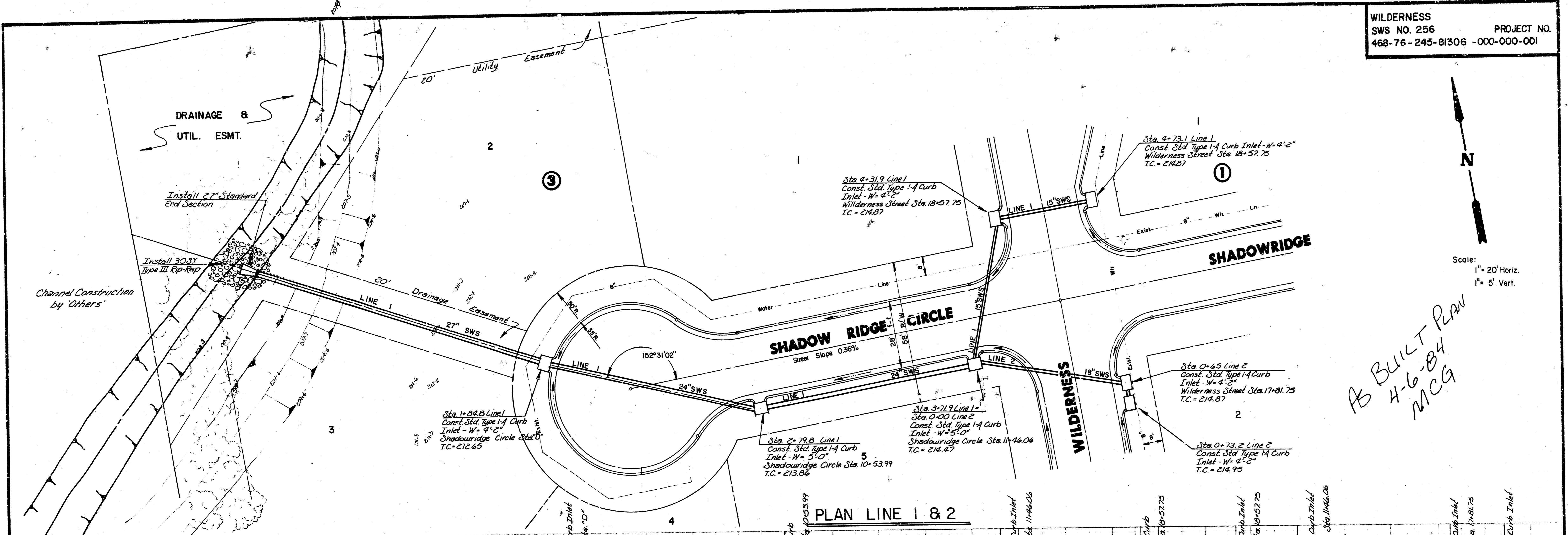
REVISED LINE 4 & 5  
12-15-83 BY MK.E.C.

	<b>WILDERNESS STORM WATER SEWER PLANS</b>	Design KHB
		Drawn by DLM
MID-KANSAS ENGINEERING CONSULTANTS PA 240 NORTH ROCK ROAD SUITE 130 WICHITA, KANSAS 67206	682-6561	Checked by KHB
		Date SEPT. 1983
Sheet <b>1</b> of <b>7</b>		Job no.

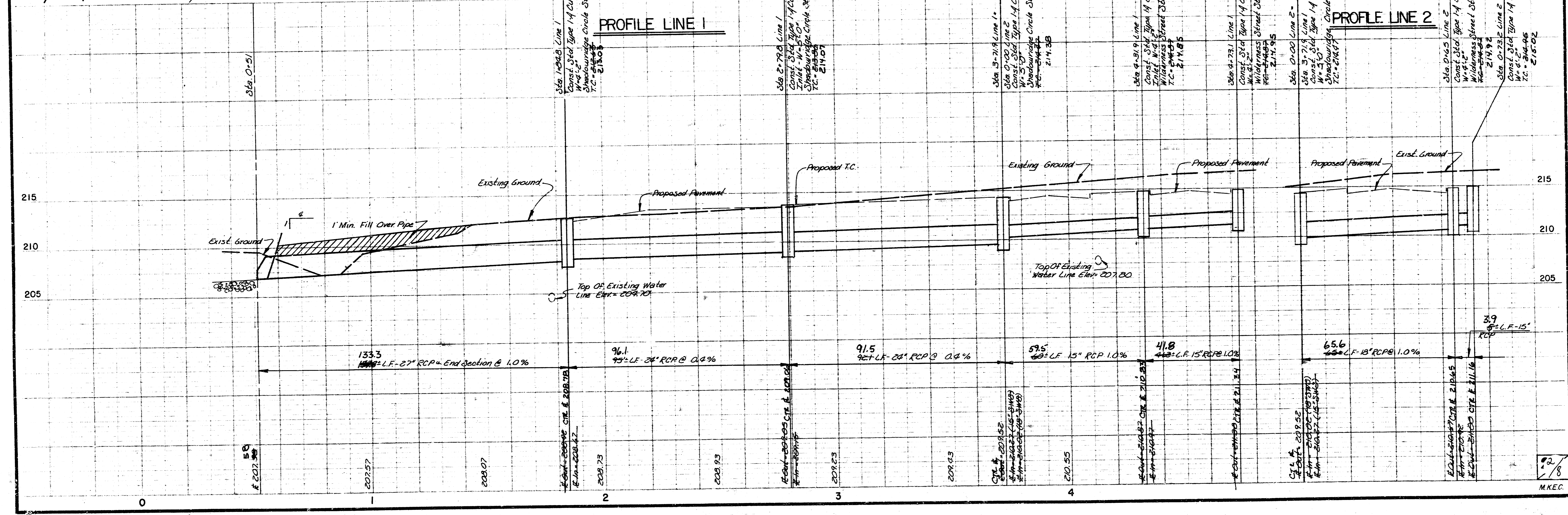


Scale:  
1" = 20' Horiz.  
1" = 5' Vert.

*AB BUILT PLAN  
4-6-84  
MCG*



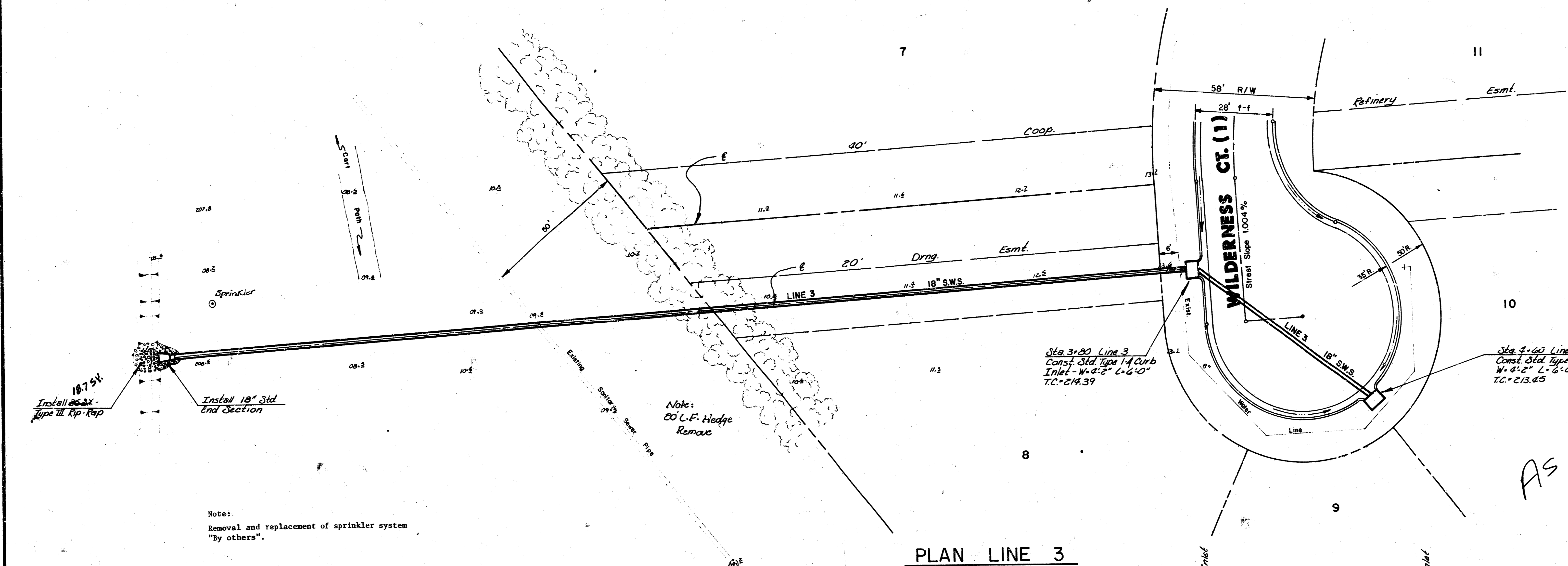
PLAN LINE 1 & 2



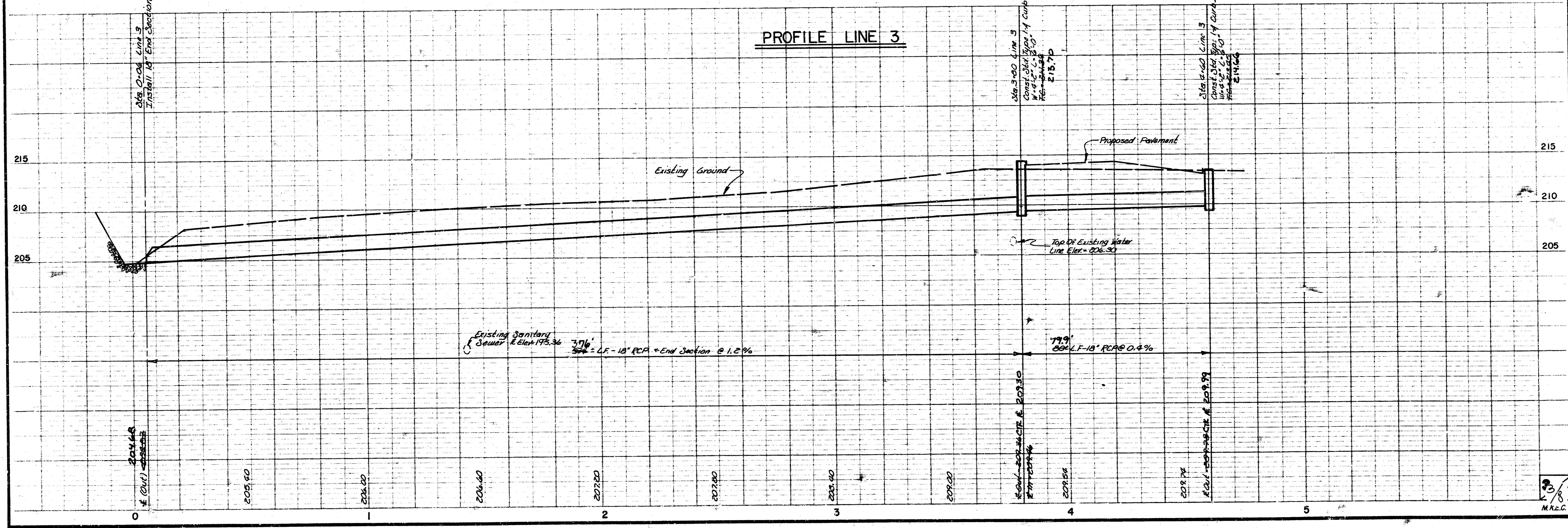
PROFILE LINE 1

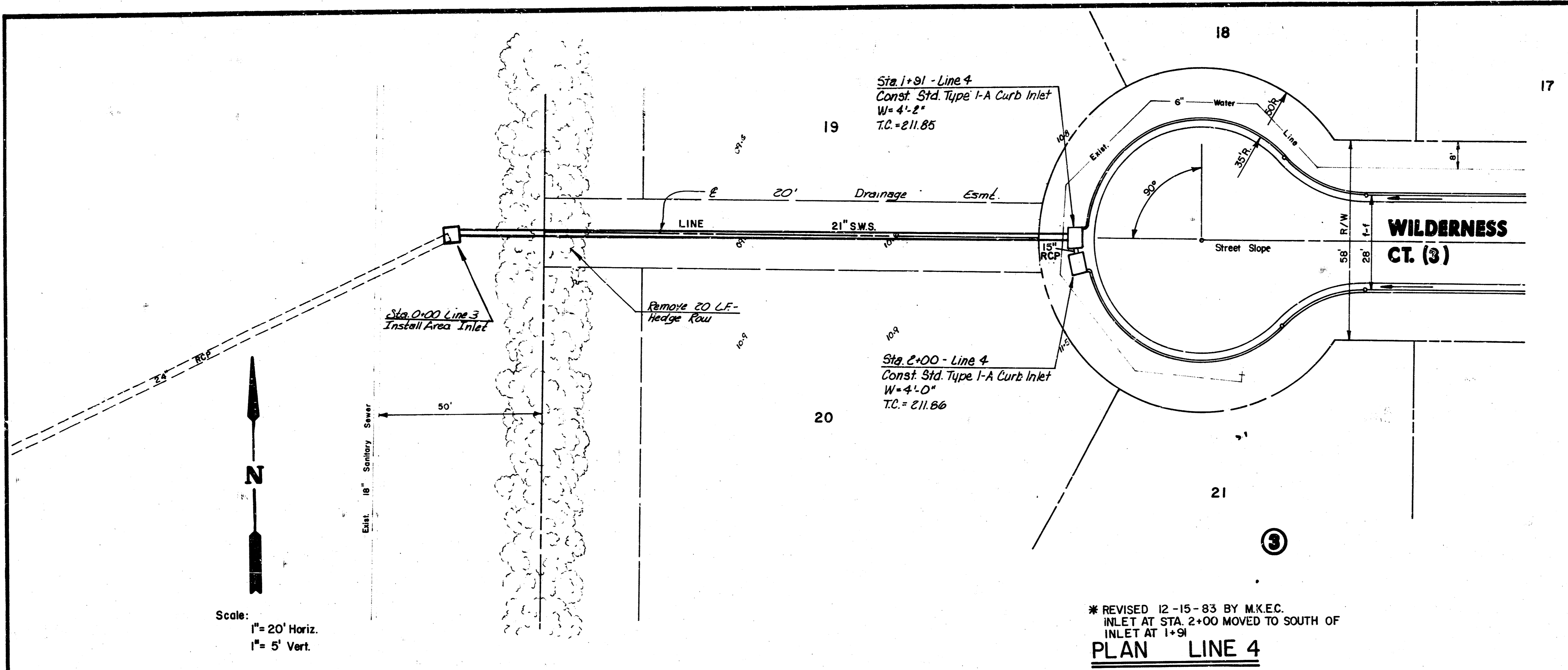
PROFILE LINE 2

M.K.E.C.

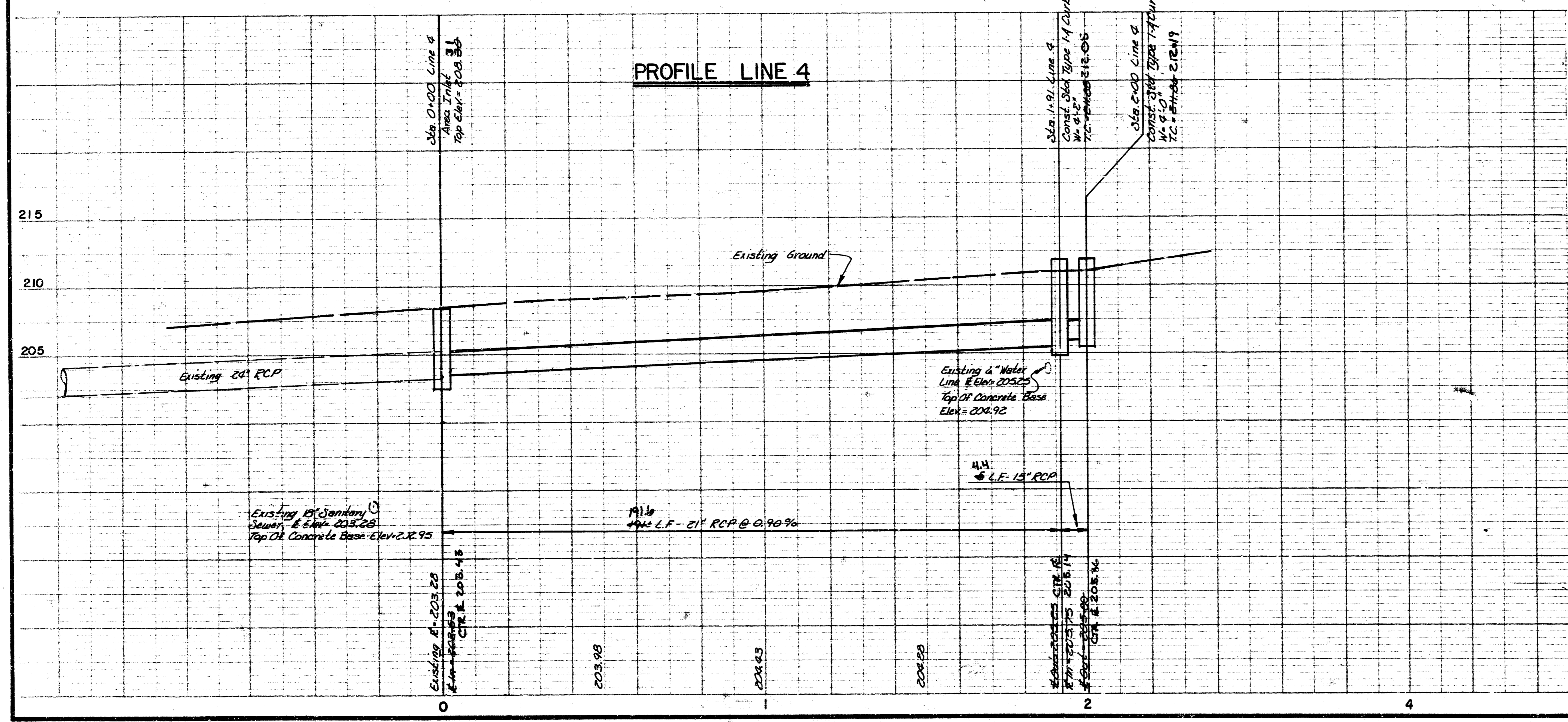


AS BUILT PLAN  
 4-6-84  
 MCG

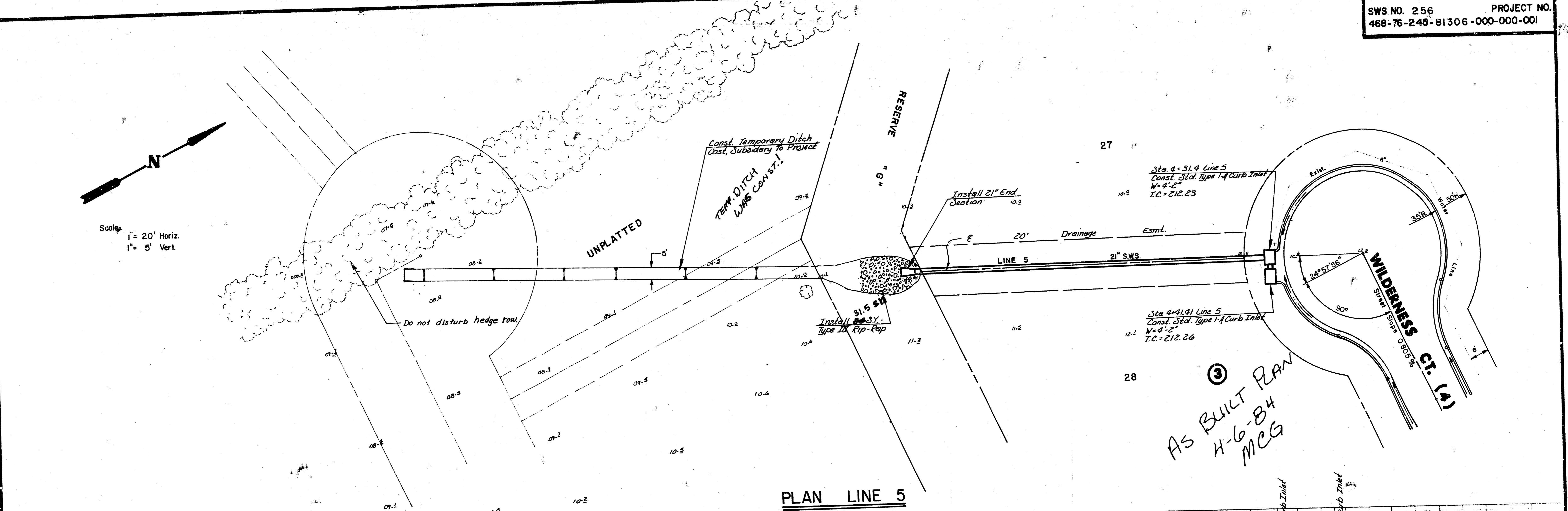




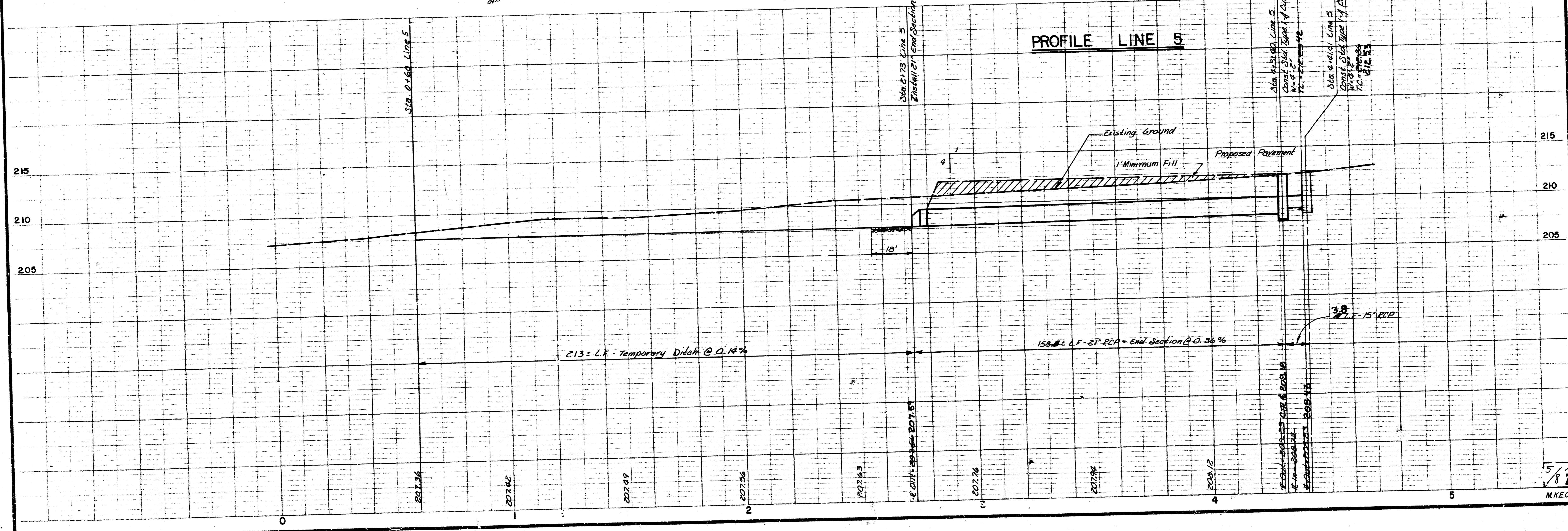
AS BUILT PLAN  
 H-6-84  
 MCEG



Scale:  
 1" = 20' Horiz.  
 1" = 5' Vert.

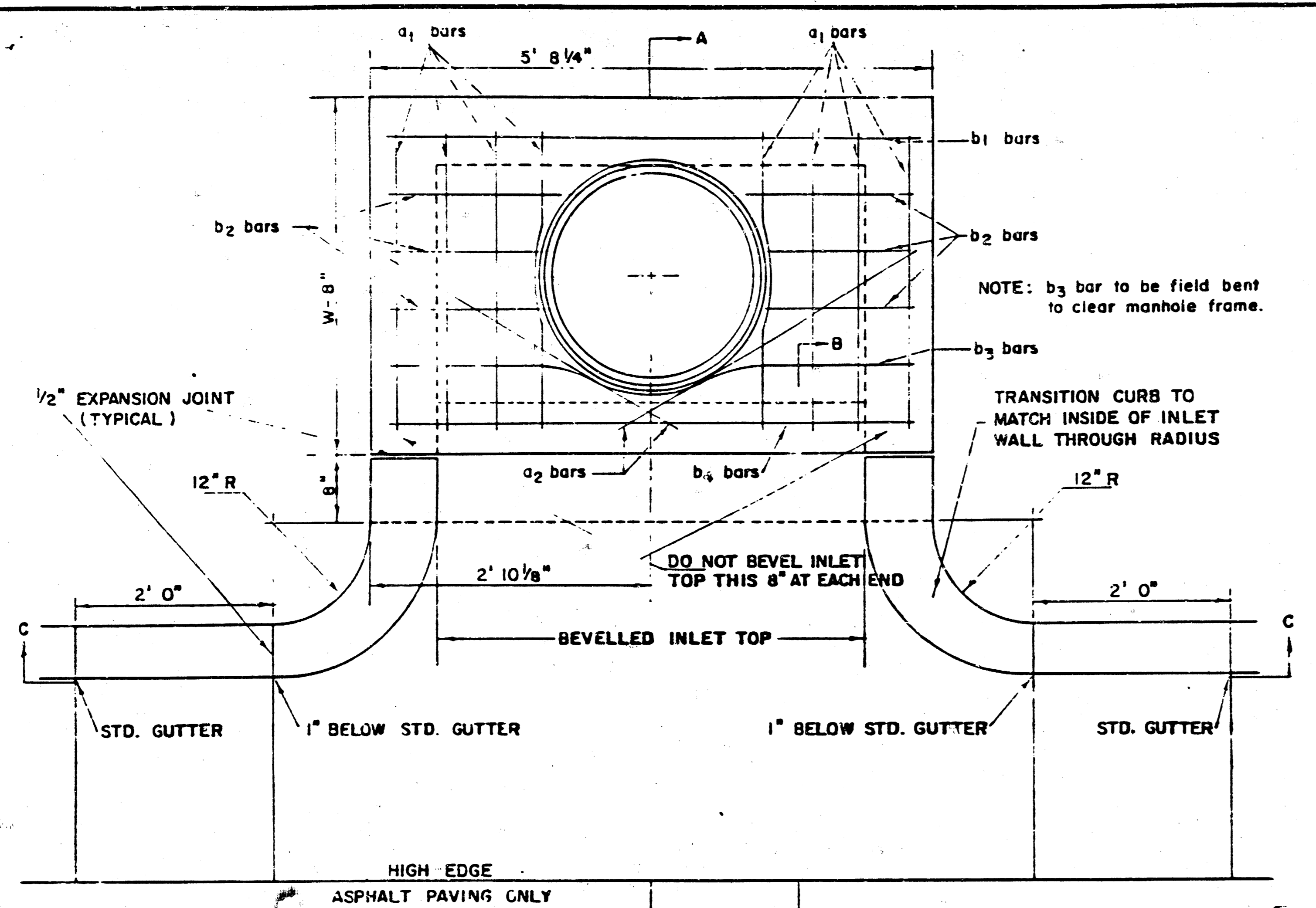


PLAN LINE 5



PROFILE LINE 5

③  
 AS BUILT PLAN  
 H-6-84  
 MCG

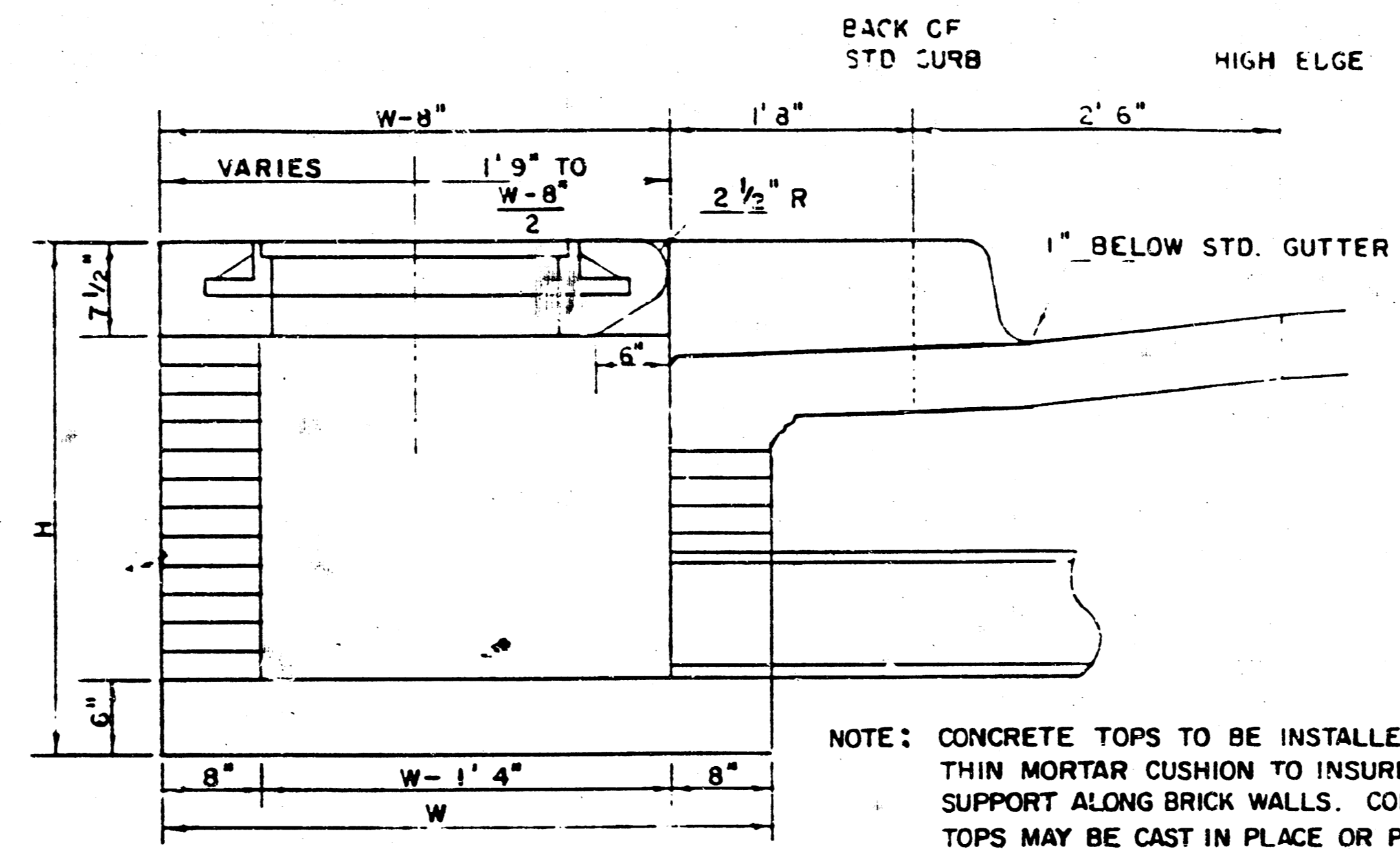


PLAN (SCALE 1" = 1'0")

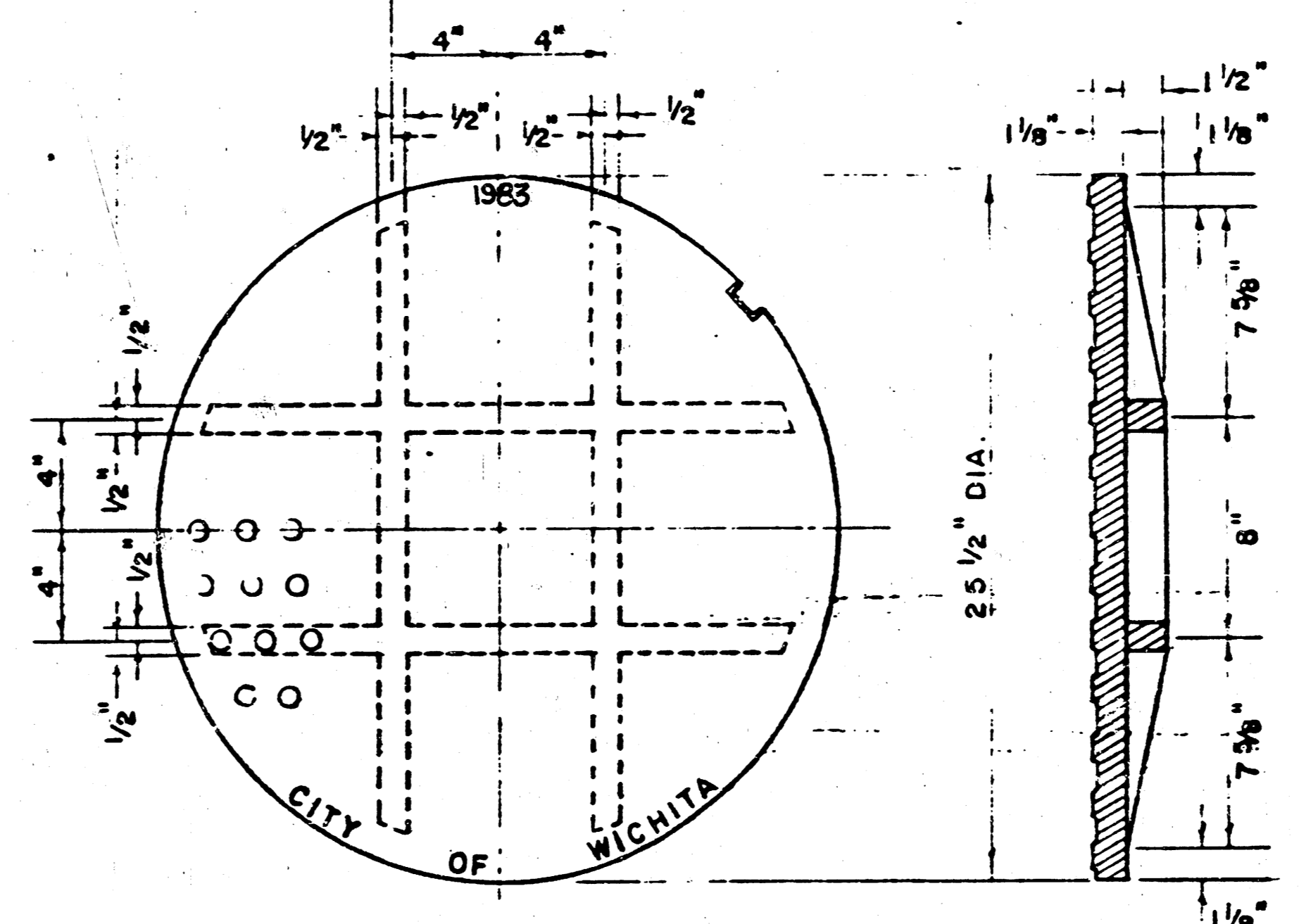
**STEEL SCHEDULE**

BAR NUMBER	a1	a2	b1	b2	b3	b4	WT. LBS.
1	8	2	1	3	5	7	9
2	4	4	4	4	4	4	4
3	4	4	4	4	4	4	4
4	4	4	4	4	4	4	4
5	4	4	4	4	4	4	4
6	4	4	4	4	4	4	4
7	4	4	4	4	4	4	4
8	4	4	4	4	4	4	4
9	4	4	4	4	4	4	4
10	4	4	4	4	4	4	4
11	4	4	4	4	4	4	4
12	4	4	4	4	4	4	4
13	4	4	4	4	4	4	4
14	4	4	4	4	4	4	4
15	4	4	4	4	4	4	4
16	4	4	4	4	4	4	4
17	4	4	4	4	4	4	4
18	4	4	4	4	4	4	4
19	4	4	4	4	4	4	4
20	4	4	4	4	4	4	4
21	4	4	4	4	4	4	4
22	4	4	4	4	4	4	4
23	4	4	4	4	4	4	4
24	4	4	4	4	4	4	4
25	4	4	4	4	4	4	4
26	4	4	4	4	4	4	4
27	4	4	4	4	4	4	4
28	4	4	4	4	4	4	4
29	4	4	4	4	4	4	4
30	4	4	4	4	4	4	4
31	4	4	4	4	4	4	4
32	4	4	4	4	4	4	4
33	4	4	4	4	4	4	4
34	4	4	4	4	4	4	4
35	4	4	4	4	4	4	4
36	4	4	4	4	4	4	4
37	4	4	4	4	4	4	4
38	4	4	4	4	4	4	4
39	4	4	4	4	4	4	4
40	4	4	4	4	4	4	4
41	4	4	4	4	4	4	4
42	4	4	4	4	4	4	4
43	4	4	4	4	4	4	4
44	4	4	4	4	4	4	4
45	4	4	4	4	4	4	4
46	4	4	4	4	4	4	4
47	4	4	4	4	4	4	4
48	4	4	4	4	4	4	4
49	4	4	4	4	4	4	4
50	4	4	4	4	4	4	4

NOTE: a2 BARS TO BE PLACED APPROX. 2" BELOW TOP OF INLET COVER



SECTION A-A (SCALE 1" = 1'0")

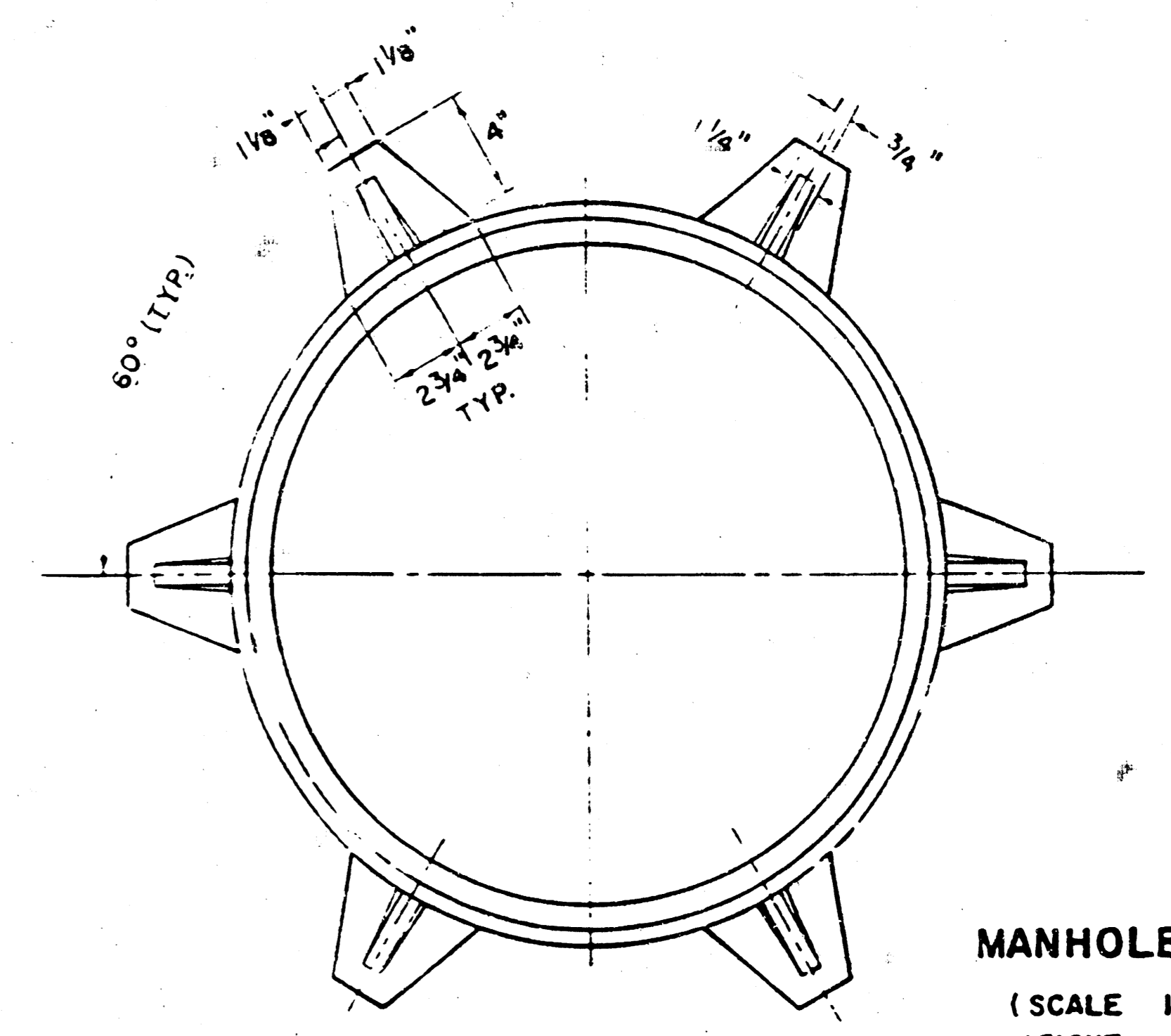


BENDING DIAGRAM

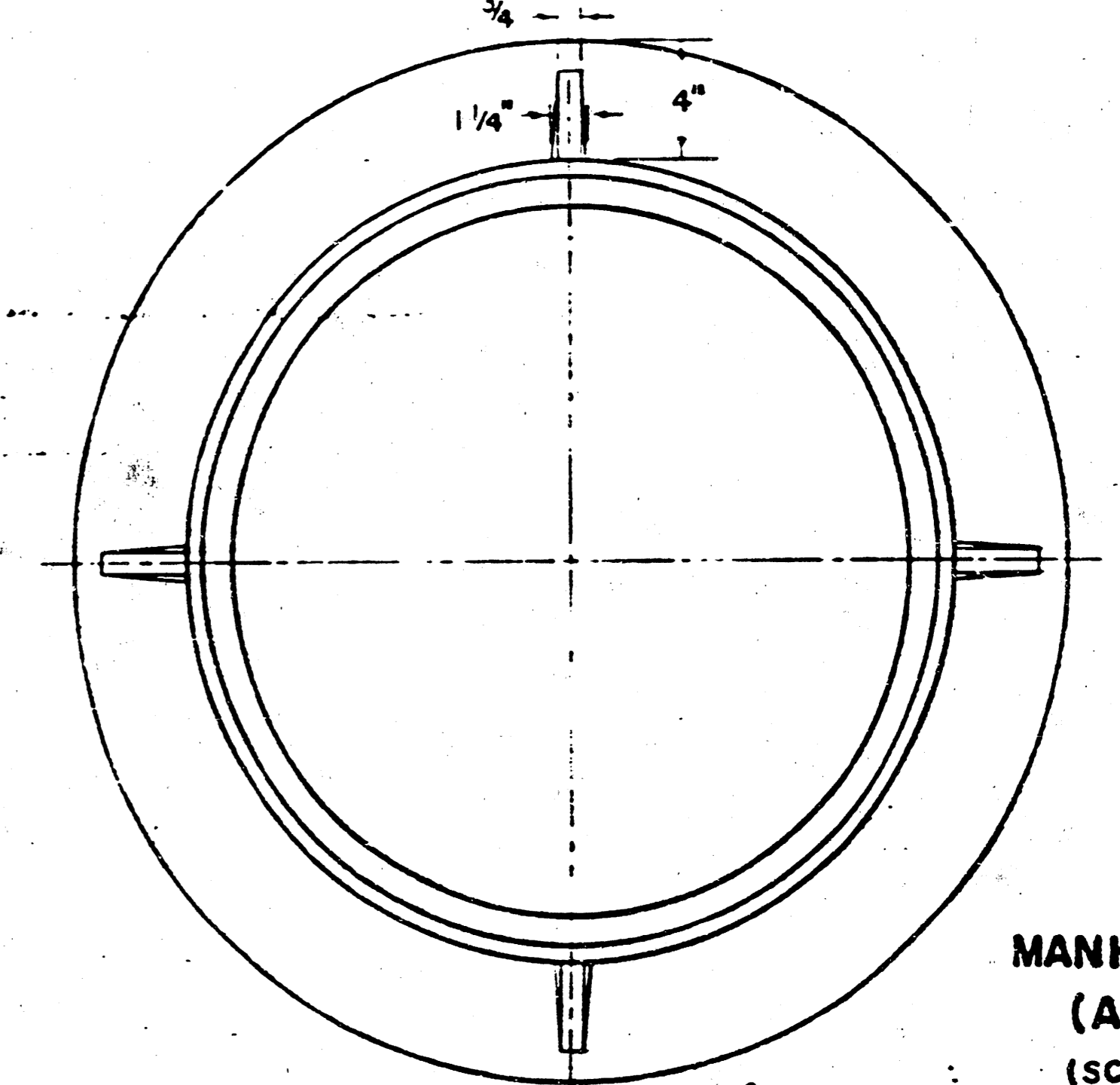
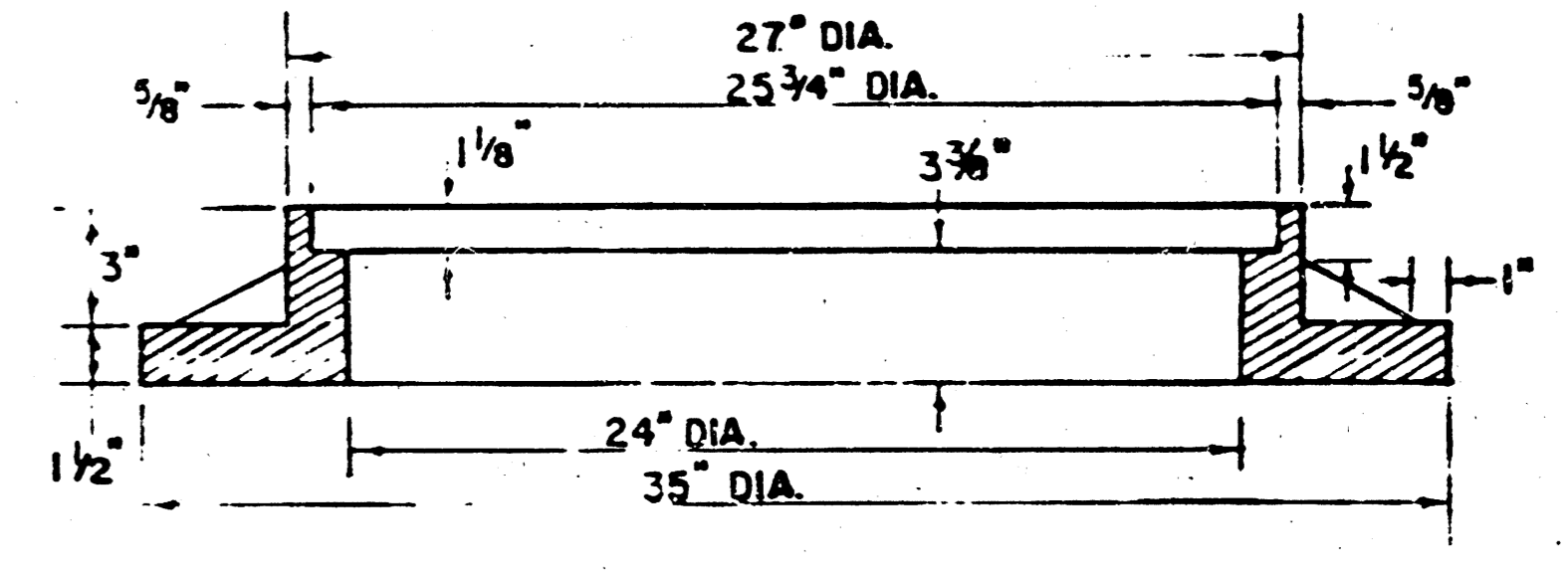
**STANDARD CURB INLET PRECAST TOPS**

W	PRE-CAST TOP SIZE	PIPE SIZE	CU. YD. CONC.
4' 2"	36"x5'8 1/4"x7 1/2"	21" & SMALLER	0.46 *
5' 0"	44"x5'8 1/4"x7 1/2"	24" & 30"	0.57 *
6' 0"	54"x5'8 1/4"x7 1/2"	36" & 42"	0.71 *
7' 0"	64"x5'8 1/4"x7 1/2"	48" & 54"	0.84 *
8' 0"	74"x5'8 1/4"x7 1/2"	60" & 66"	0.97 *

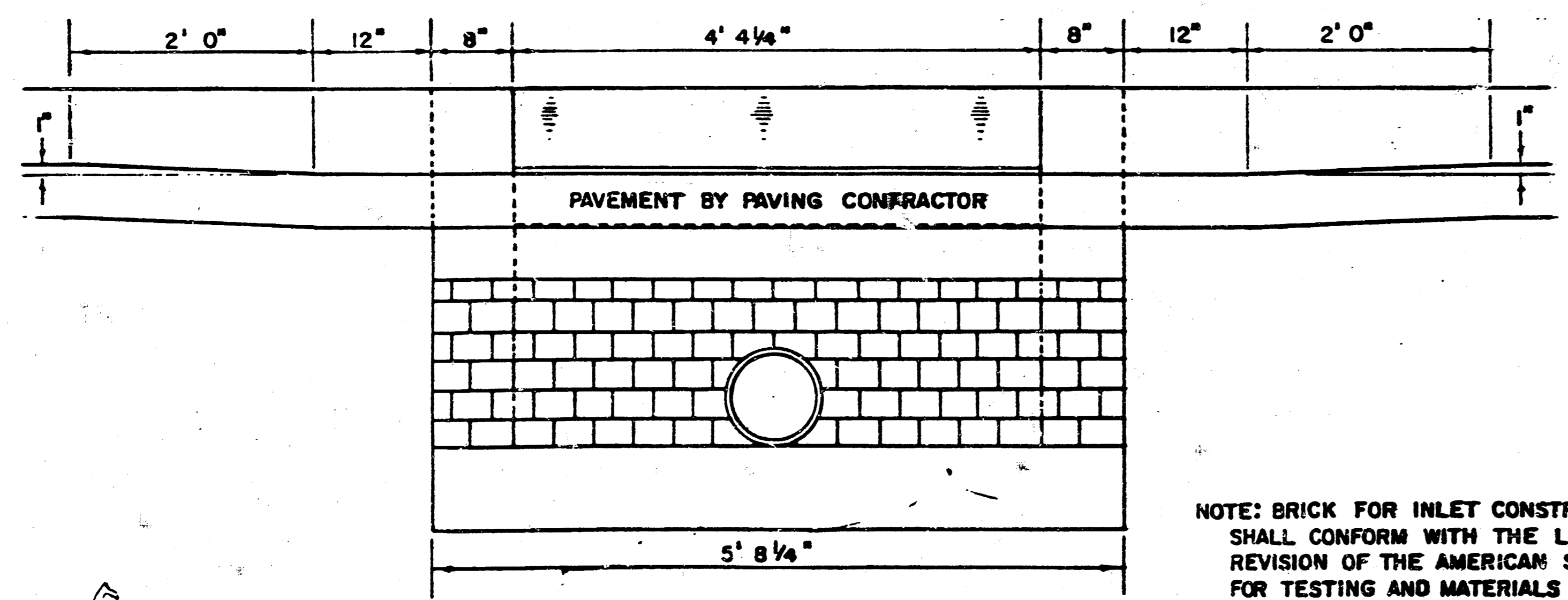
\* GROSS VOLUME



MANHOLE FRAME (SCALE 1" = 6") WEIGHT = 180 LBS.

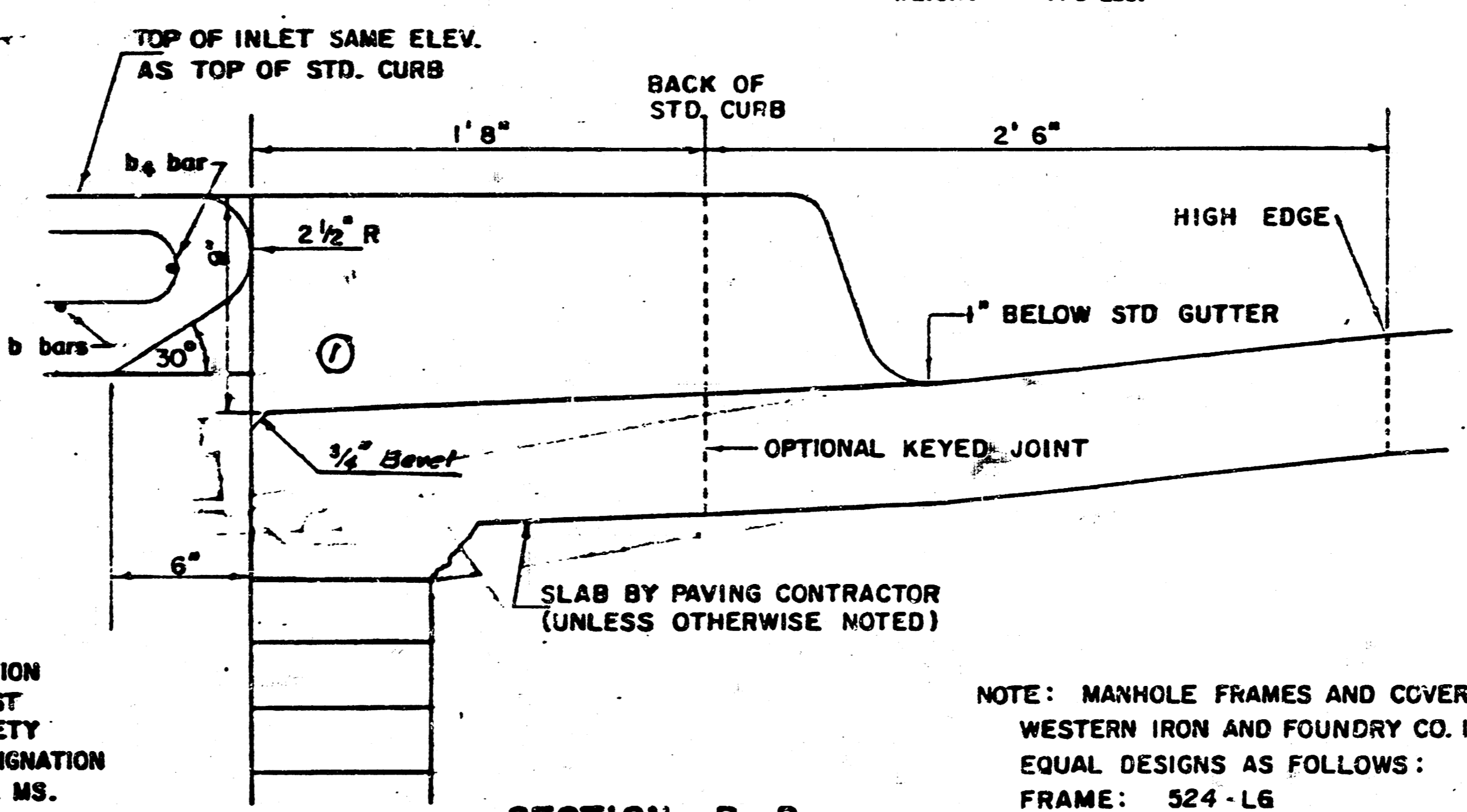


MANHOLE FRAME (ALTERNATE) (SCALE 1" = 6") WEIGHT = 180 LBS.



SECTION C-C (SCALE 1" = 1'0")

NOTE: BRICK FOR INLET CONSTRUCTION SHALL CONFORM WITH THE LATEST REVISION OF THE AMERICAN SOCIETY FOR TESTING AND MATERIALS DESIGNATION C-32 FOR MANHOLE BRICK GRADE MS.



SECTION B-B (SCALE 1" = 6")

NOTE: MANHOLE FRAMES AND COVER ARE WESTERN IRON AND FOUNDRY CO. INC. OR EQUAL DESIGNS AS FOLLOWS:  
 FRAME: 524-LG  
 FRAME (ALTERNATE): 500 A4  
 COVER: 222 54 "NOBBY"

DETAIL STANDARD TYPE IA CURB INLET  
 CITY OF WICHITA, KANSAS  
 MIKE LINDEBAK, DIRECTOR OF ENGINEERING/  
 CITY ENGINEER  
 JUNE, 1983

FINAL PLAT OF  
**WILDERNESS**

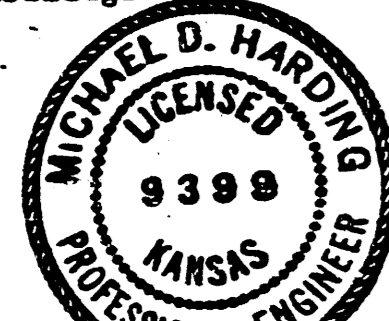
AN ADDITION TO WICHITA, SEDGWICK COUNTY, KANSAS

I, Michael D. Harding, a Civil Engineer in Kansas, do hereby certify that I have been in responsible charge of surveying and setting of "Wilderness" as an addition to Wichita, Sedgwick County, Kansas, into lots, blocks, and reserves, the same being accurately set forth in the accompanying plat and described as follows:

A tract of land in the north half of Section 27 south, Range 2 east of the 6th P.M., Sedgwick County, Kansas described as:

Beginning at the intersection of the south right-of-way line of 29th Street North and the west line of said northeast quarter; thence easterly along the south line of 29th Street North bearing N 89° 06' 39" E, 1278.11 feet; thence S 44° 06' 39" W, 237.28 feet to a point on a curve to the right with a central angle of 45° 00' 00", a radius of 109.00 feet, a length of 85.61 feet and a long chord of 83.43 feet bearing S 23° 23' 21" E; thence S 0° 53' 21" E, 99.00 feet; thence S 89° 06' 39" W, 145.82 feet; thence S 44° 06' 39" W, 87.95 feet; thence S 0° 53' 21" E, 126.72 feet; thence S 79° 19' 10" W, 183.57 feet to a point on a curve to the right with a central angle of 126° 03' 03", a radius of 50.00 feet, a length of 110.00 feet and a long chord of 89.12 feet bearing S 52° 20' 42" W; thence S 34° 34' 38" W, 80.00 feet; thence S 55° 25' 22" E, 43.86 feet to a point on a curve to the right with a central angle of 94° 33' 15", a radius of 262.88 feet, a length of 433.83 feet and a long chord of 386.25 feet bearing S 8° 04' 44" E; thence S 39° 07' 53" W, 304.68 feet to a point on a curve to the left with a central angle of 40° 00' 00", a radius of 174.06 feet, a length of 121.52 feet and a long chord of 119.06 feet bearing S 19° 07' 53" W; thence S 0° 52' 07" E, 110.91 feet to a point on a curve to the right with a central angle of 22° 30' 00", a radius of 308.50 feet, a length of 121.15 feet and a long chord of 120.37 feet bearing S 10° 22' 13" W; thence S 25° 37' 53" W, 70.17 feet; thence S 49° 07' 53" W, 334.55 feet; thence N 45° 42' 07" W, 160.00 feet; thence N 45° 07' 53" E, 40.00 feet to a point on the west line of the northeast quarter of said Section 5; thence N 0° 52' 07" W, 1602.61 feet to the point of beginning, containing 30.26 acres more or less. The drainage easement recorded on film 548, Page 729 is being vacated and replatted by virtue of K.S.A. 12-512(b).

I hereby certify that the details of this plat are correct to the best of my knowledge and belief this 25th day of July, 1983.



*Michael D. Harding*  
Michael D. Harding, P.E.  
Mid-Kansas Engineering Consultants, P.A.  
240 North Rock Road, Suite 130  
Wichita, Kansas 67206

Know all men by these presents that the undersigned property owners of the land as above set forth in the Engineer's Certificate, have caused the same to be surveyed and platted into lots, blocks, streets and reserves, the same to be known as "Wilderness", an addition to Wichita, Sedgwick County, Kansas. The streets are hereby dedicated to and for the use of the public. Easements are hereby granted as indicated for the construction and maintenance of all public utilities and drainage. Reserves are platted for construction and maintenance of utilities, drainage, cart paths, recreation, buffer zones and open space and shall be owned and maintained by the Homeowners Association. The building setbacks shall be in accordance with the Tallgrass Community Unit Plan (D.P. - 96) on file in the City of Wichita, Sedgwick County Metropolitan Area Planning Department Office.

Tallgrass Company, a partnership  
By: *W.F. Binter*  
W.F. BINTER, Partner

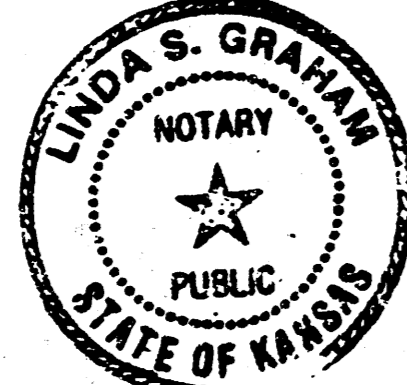


STATE OF KANSAS  
COUNTY OF SEDGWICK

Be it remembered that on this 16th day of July, 1983, before me, a Notary Public in and for said State and County, came *W.F. Binter*, on behalf of Tallgrass Company, a Partnership, to me personally known to be the same person who executed the foregoing instrument of writing and duly acknowledged the execution of the same. In testimony whereof I have hereunto set my hand and affixed my notarial seal the day and year above written.

*Linda S. Graham*  
Linda S. Graham  
Notary Public

My Appointment Expires 2-9-86



This plat approved and all dedications shown hereon, if any, accepted by the Board of County Commissioners of Sedgwick County, Kansas, this 11th day of August, 1983.

*Jack Spette* Chairman  
Jack Spette  
*Donald E. Stragg* Commissioner  
Donald E. Stragg  
*Tom Scott* Commissioner  
Tom Scott

Attest: *Dorothy K. White* County Clerk  
Dorothy K. White

Entered on transfer record this 11 day of August, 1983.

*Dorothy K. White* County Clerk  
Dorothy K. White

STATE OF KANSAS  
COUNTY OF SEDGWICK

This is to certify that this instrument was filed for record in the Register of Deeds Office at 1:00 PM on the 12th day of August, 1983.

*Bette F. McCart* Register of Deeds  
Bette F. McCart

*Ed Resa* Deputy  
Ed Resa

This plat of "Wilderness" has been submitted to and approved by the Wichita-Sedgwick County Metropolitan Area Planning Commission, Wichita, Kansas.

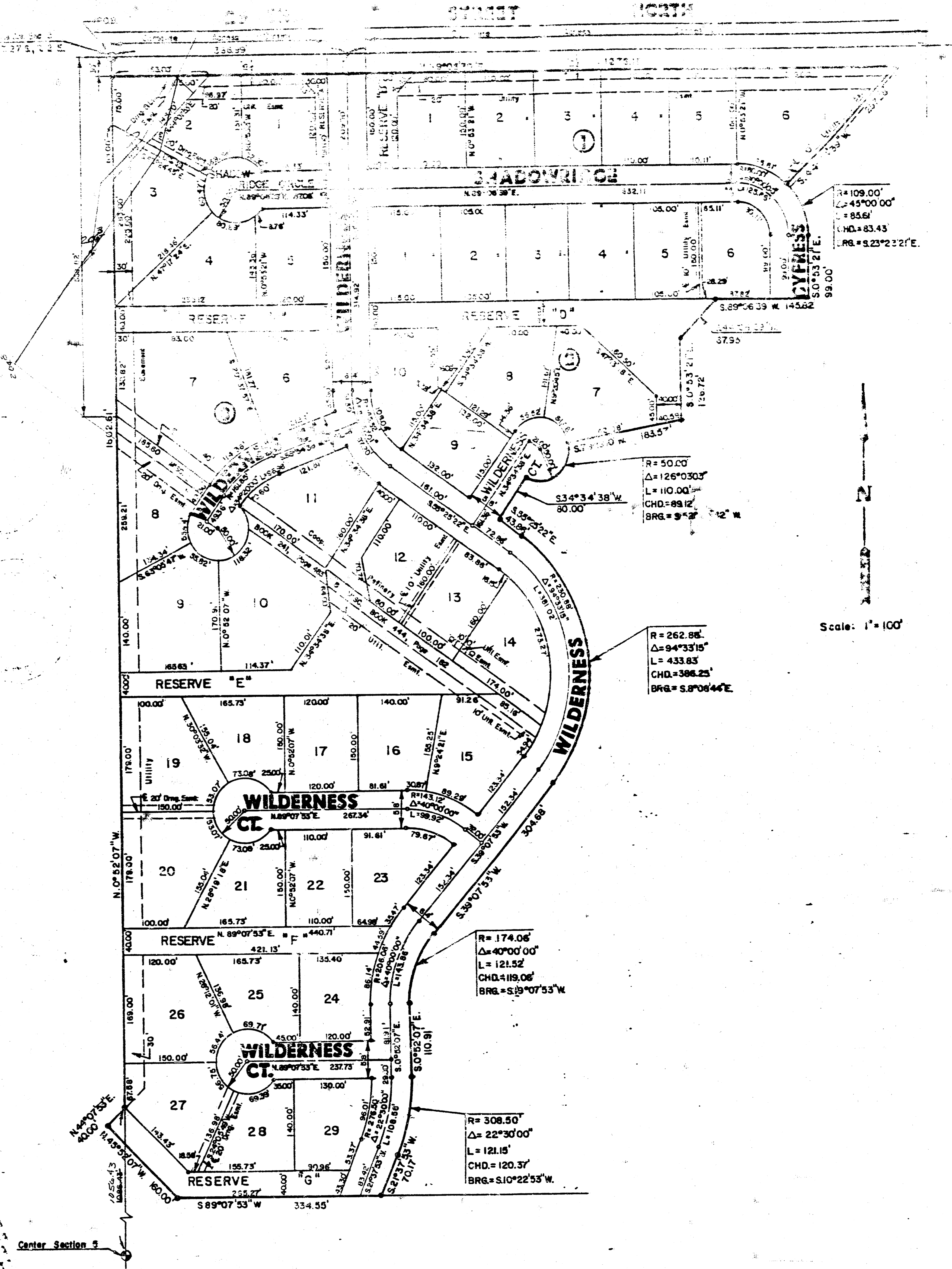
Dated this 16th day of June, 1983.

Wichita-Sedgwick County Metropolitan Area Planning Commission

*David Bayouth* Chairman  
David Bayouth  
*Robert A. Lakin* Secretary  
Robert A. Lakin

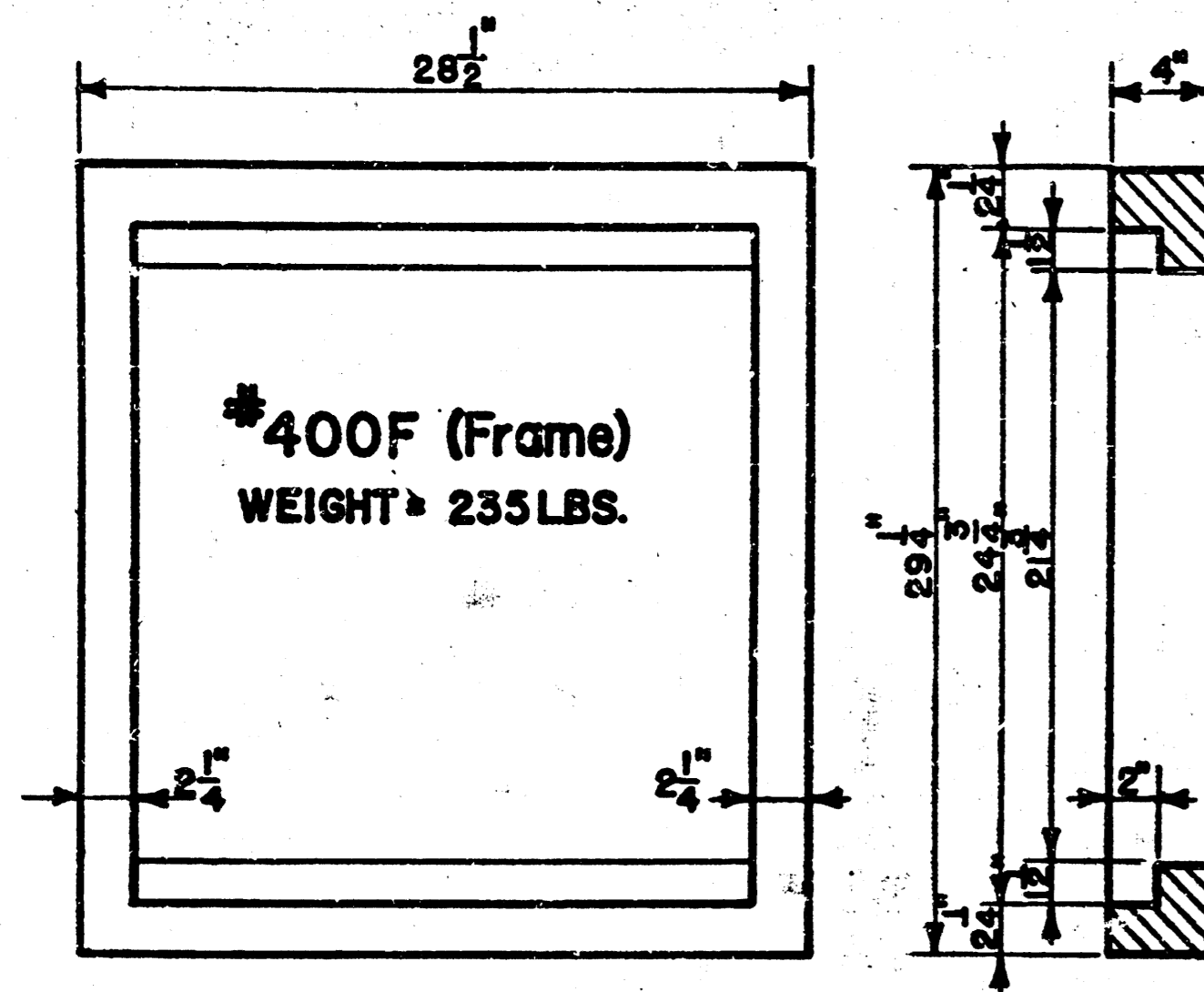
This plat approved and all dedications shown hereon, if any, accepted by the City Commission of the City of Wichita, Kansas this 16th day of July, 1983.

*Robert G. Knight* Mayor  
Robert G. Knight  
*Dona M. C. Gasic* City Clerk  
Dona M. C. Gasic

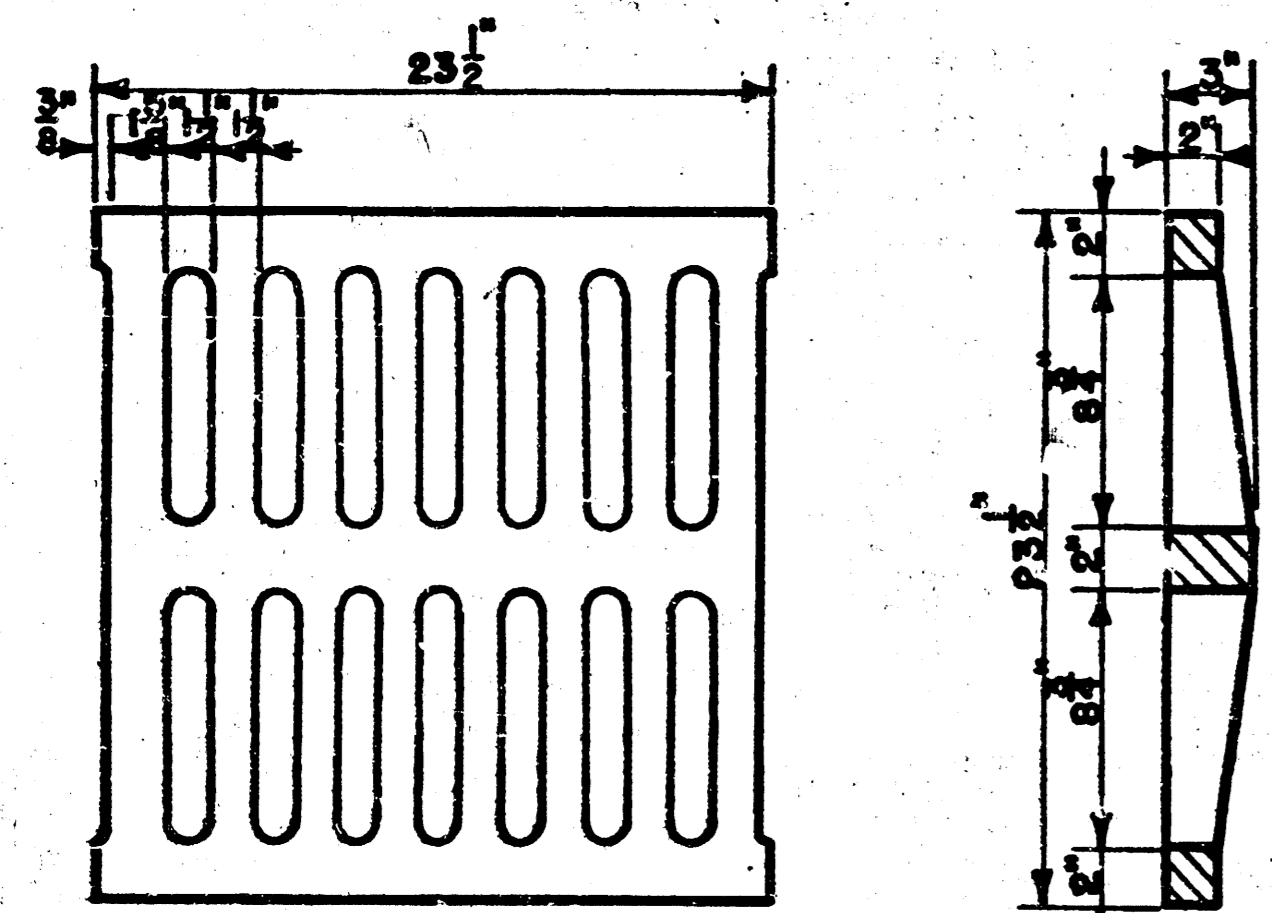


7/8  
7  
S-2 4-33

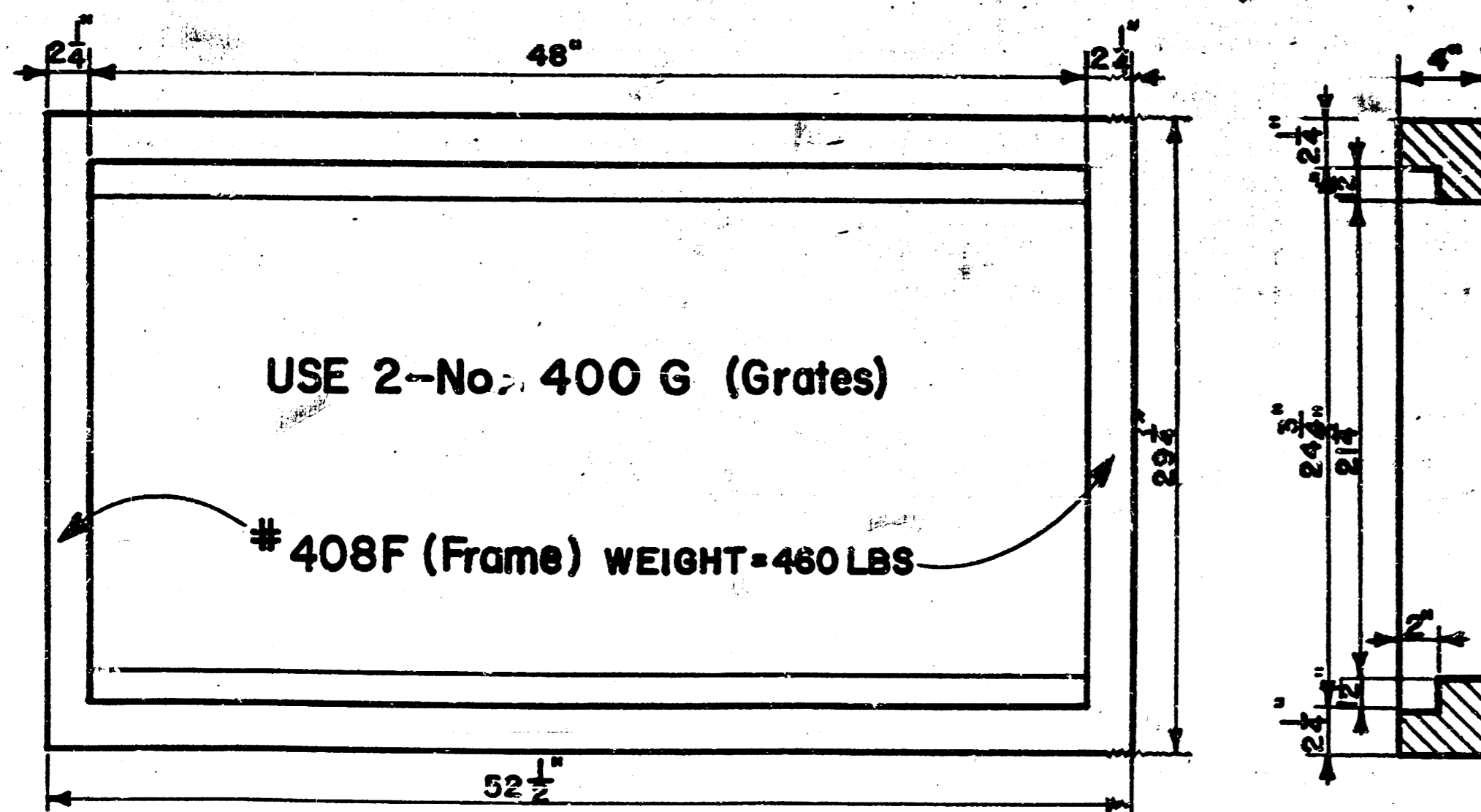
NOTE: Grates shall be imprinted on the top surface with "CITY OF WICHITA" using letters at least 1" in height. Other marking methods may be used only if approved by the engineer.



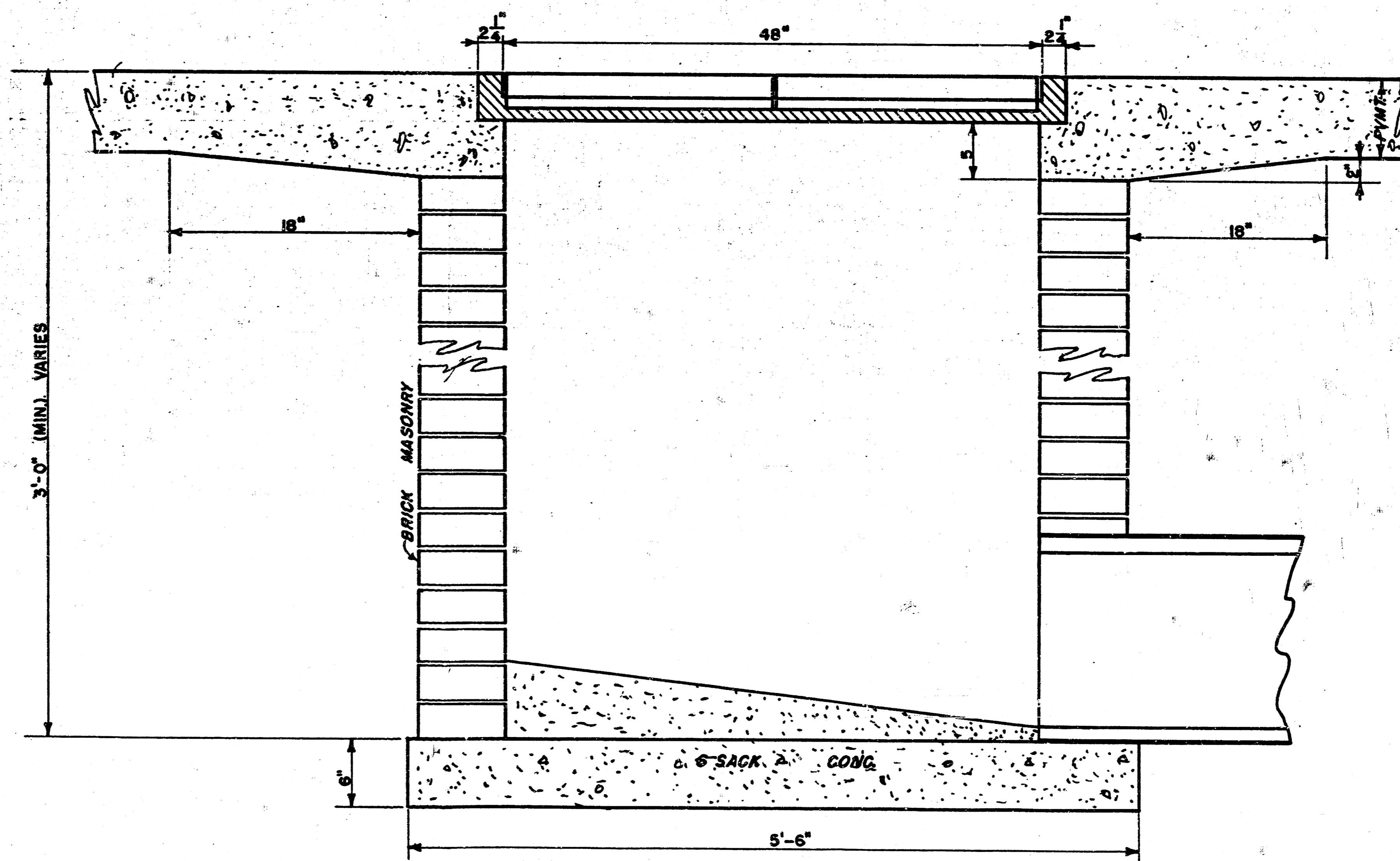
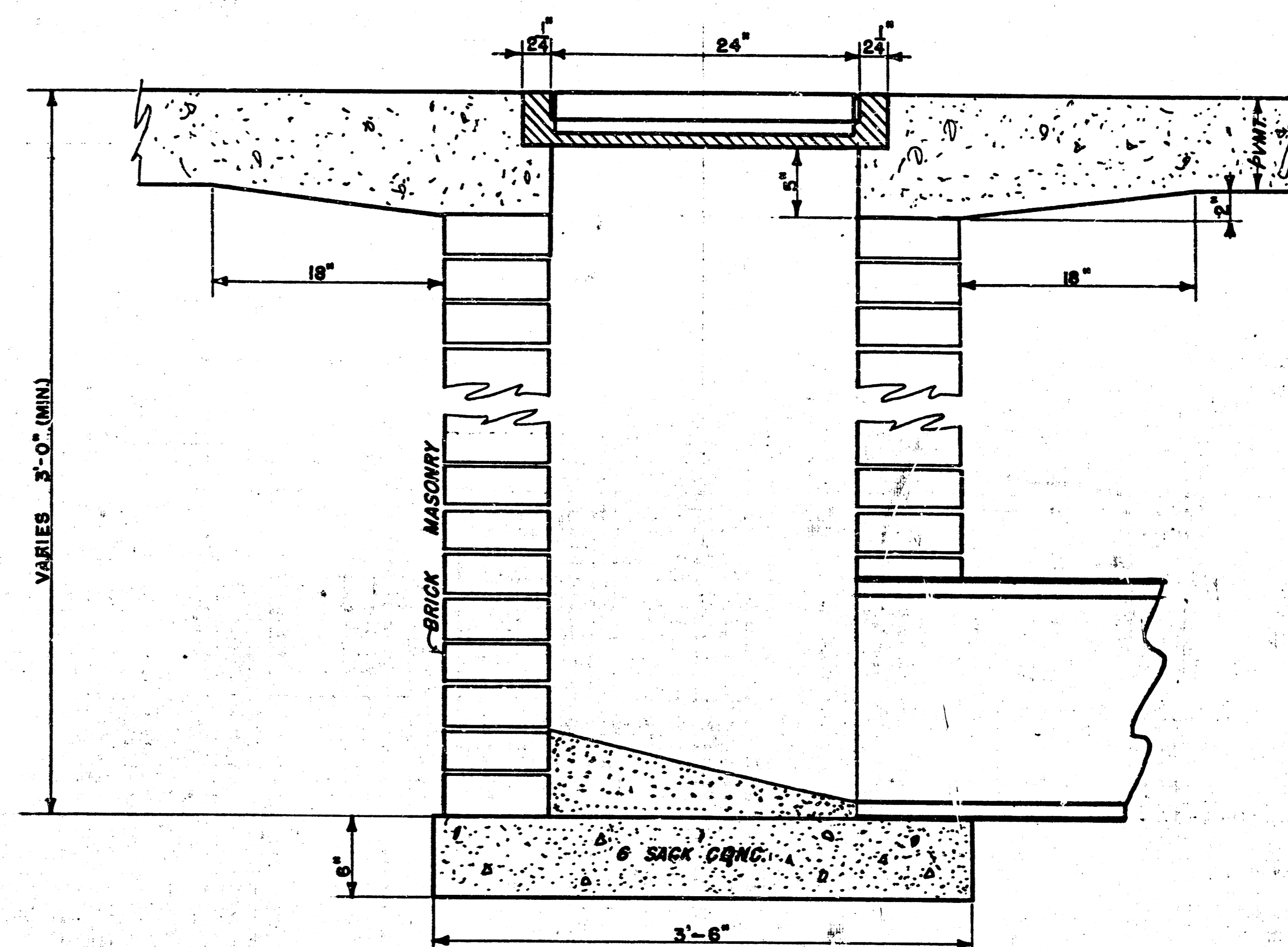
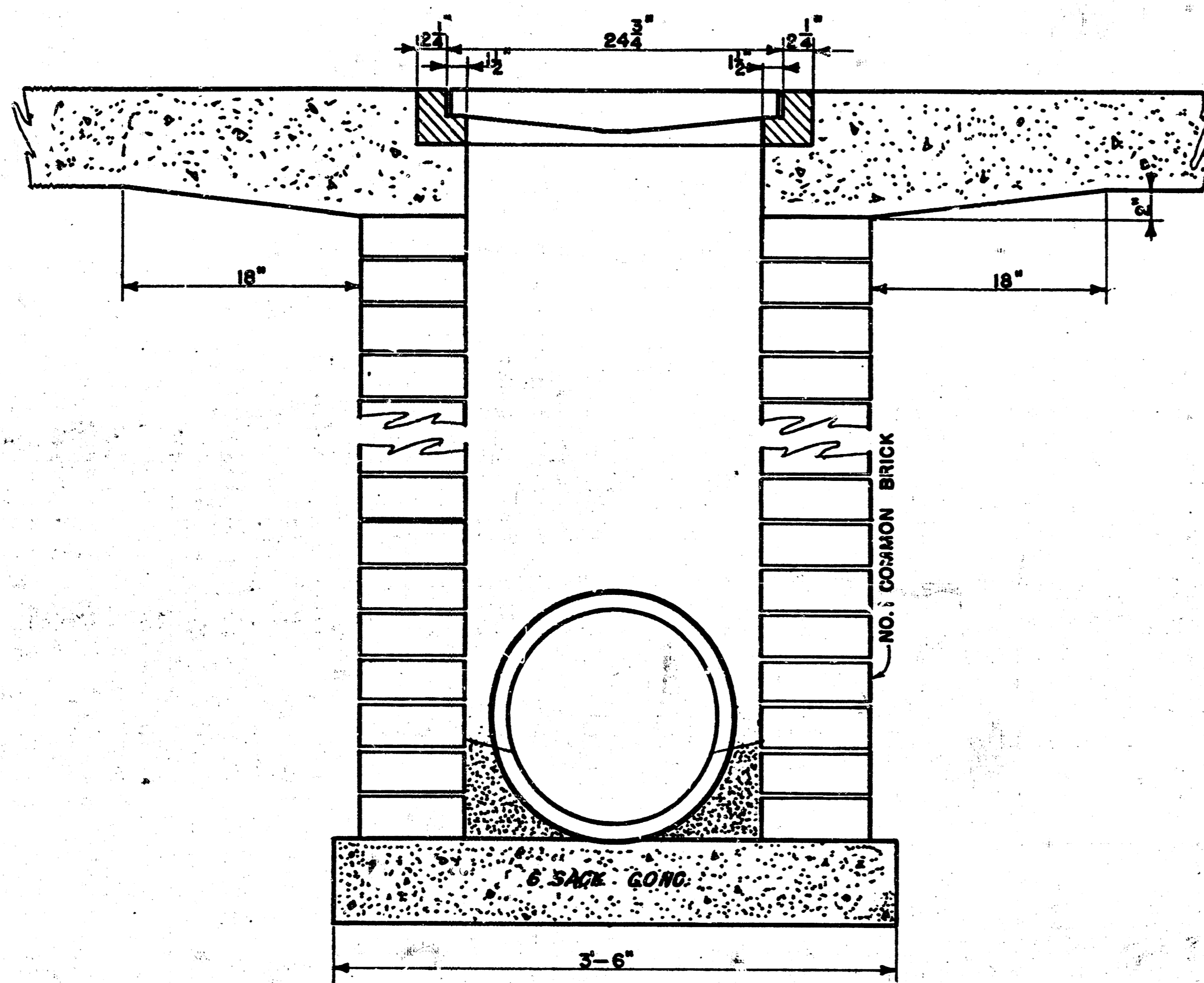
# 400G (Grate)  
WEIGHT = 235 LBS



24"x24" Frame & Grate Detail



Double 24"x24" Frame Detail



**DROP INLET DETAILS**

City of Wichita, Kansas  
 Project  
 Project No. 468-76-245-81306-000-000-001  
 Date:  
 Scale: 1-1/2" = 1'-0"

7/8/7