

**STORM SEWER PLANS FOR
S.W.S. NO. 281**

WATERFORD NORTH THIRD (PHASE 2)

**PROJECT NO.
468-76-245-81435-000-000-001**

CITY OF WICHITA, KANSAS
MIKE LINDEBAK, CITY ENGINEER
MARCH 1986

GENERAL NOTES

1. THE CONTRACTOR SHALL BE RESPONSIBLE FOR PRESERVING PROPERTY IRONS. THE CONTRACTOR SHALL BE REQUIRED TO RE-ESTABLISH ANY PROPERTY IRONS WHICH ARE DAMAGED OR DESTROYED BY HIS CONSTRUCTION OPERATIONS. SUCH IRONS SHALL BE RE-ESTABLISHED BY A LICENSED LAND SURVEYOR OR A LICENSED PROFESSIONAL ENGINEER IN ACCORDANCE WITH STATE LAWS.
2. CONTRACTOR SHALL NOTIFY UTILITY COMPANIES OF CONSTRUCTION SCHEDULING.
3. EXISTING UTILITIES AND THEIR LOCATIONS, AS SHOWN ON THE PLANS, REPRESENT THE BEST INFORMATION OBTAINABLE FOR DESIGN. LOCATION INFORMATION HAS BEEN OBTAINED FROM THE VARIOUS UTILITY COMPANIES AND IS EITHER FROM COMPANY RECORD DRAWINGS OR COMPANY PROVIDED FIELD LOCATIONS. THE PLAN LOCATIONS SHOWN ARE NOT GUARANTEED. ADDITIONAL EXISTING UTILITIES MAY ALSO BE ENCOUNTERED.

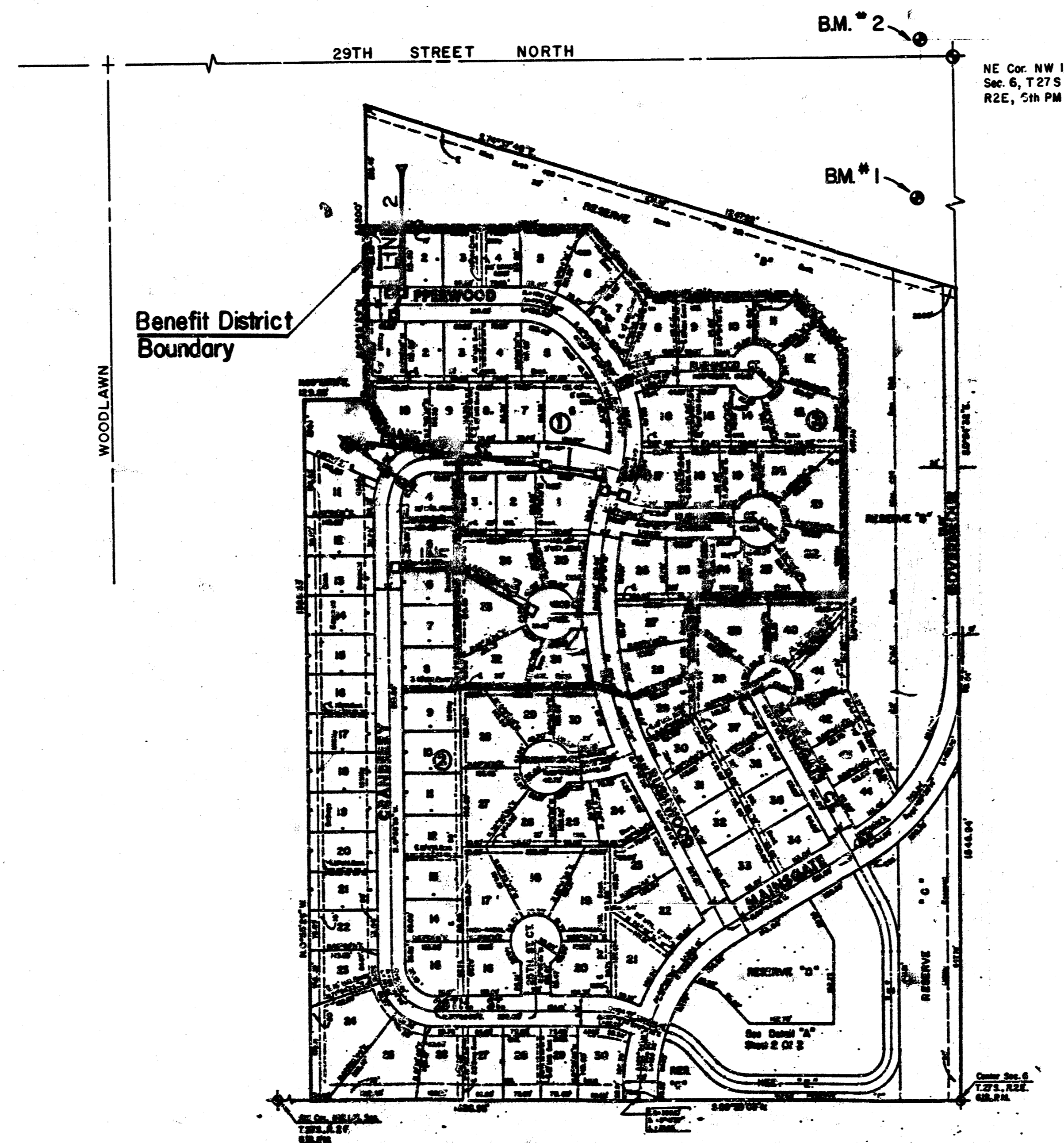
NOTE:

CONTRACTOR SHALL NOTIFY THE FOLLOWING UTILITY COMPANIES PRIOR TO ANY EXCAVATION:

ARKLA GAS COMPANY	942-8350
BELL TELEPHONE	1-316-571-2115
CABLEVISION	262-0661
GAS SERVICE COMPANY	263-7511
KANSAS GAS & ELECTRIC	
KANSAS ONE-CALL	1-800-344-7233

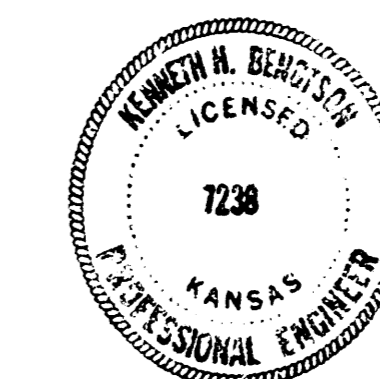
BENCH MARKS

1. Railroad spike west face of west pole
Second H-pole south of 29th
Elev. = 191.85'
2. Gouverneur & 29th St. North
City of Wichita BM Disc, 75' west
& 30.3' north of quarter section corner;
& 55' N & 85' W of CL of pavement at
Gouverneur & 29th.
Elev. = 182.57'



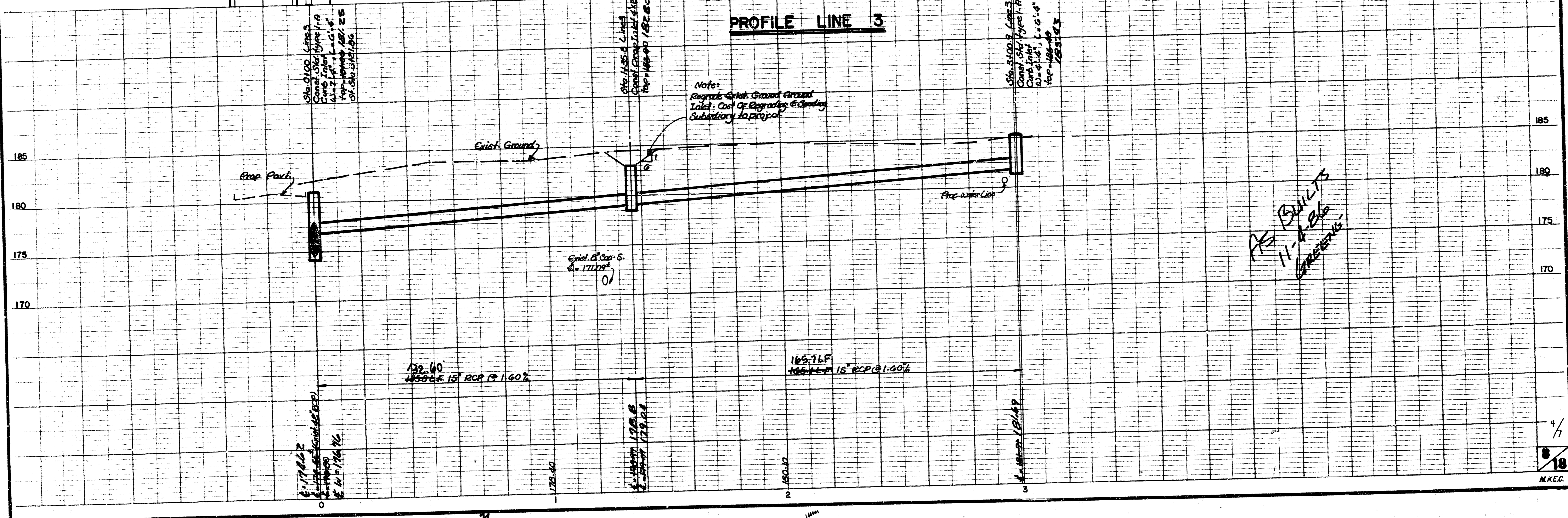
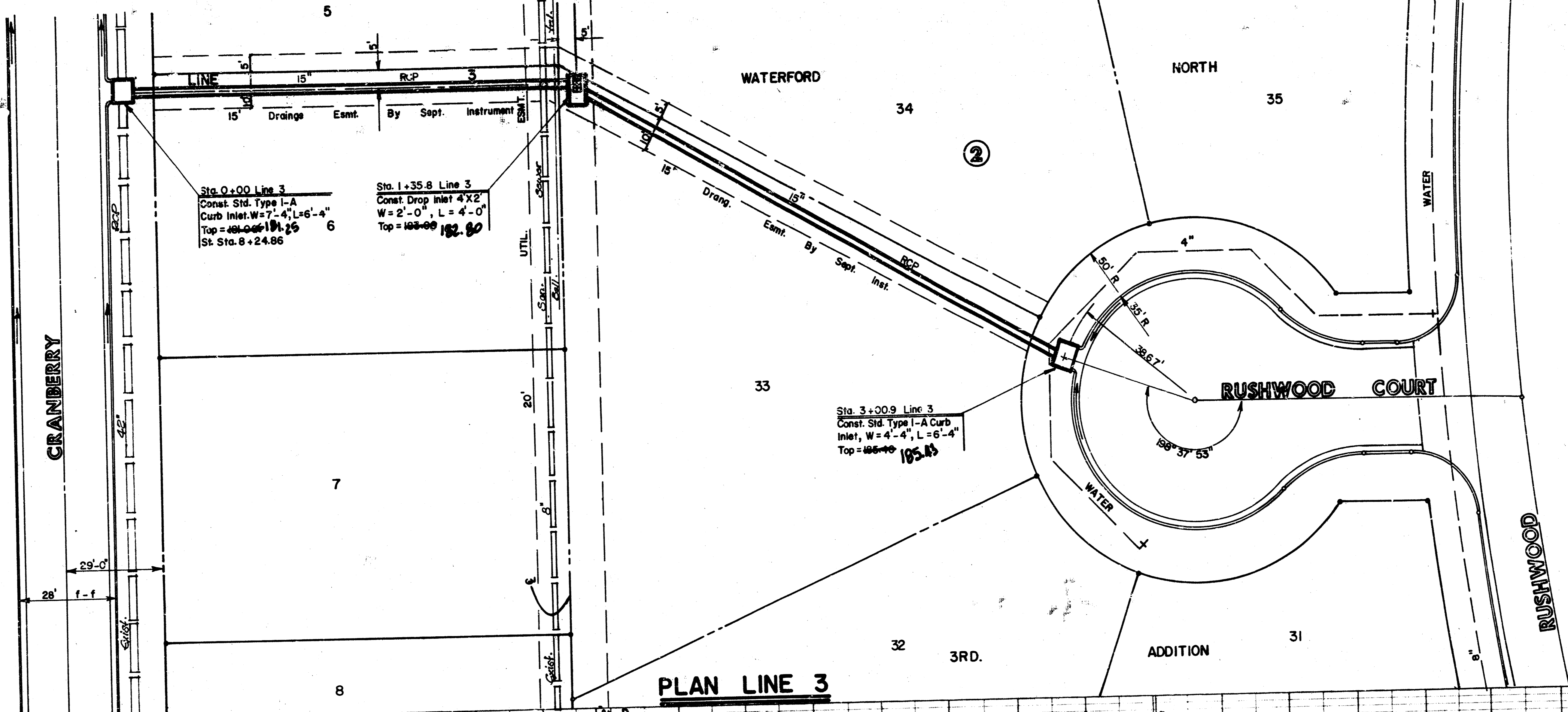
INDEX TO DRAWINGS

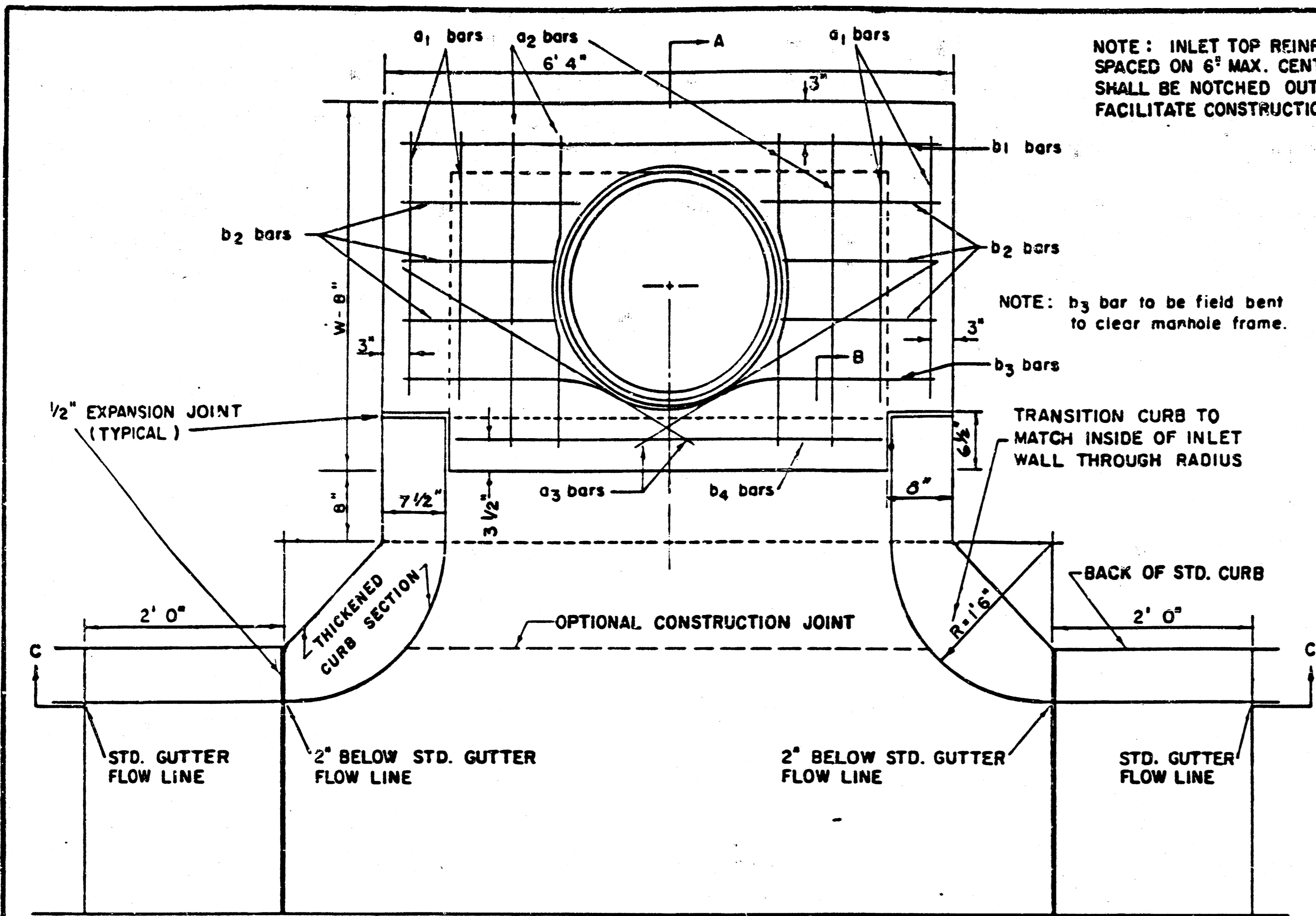
SHEET NO.	DESCRIPTION
1	COVER SHEET
2	LINE 1
3	LINE 2
4	LINE 3
5-7	DETAILS
8-9	FINAL PLAT



MEC	WATERFORD N. THIRD STORM WATER SEWER PLANS	Design: A.M.S. Drawn by: E.G. Checked by: Date: Job no.:
	MID-KANSAS ENGINEERING CONSULTANTS PA 3500 NORTH ROCK ROAD BUILDING #800 WICHITA, KANSAS 67226	Sheet 5 of 18

Handwritten notes and signatures at the bottom of the page.





PLAN

STEEL SCHEDULE

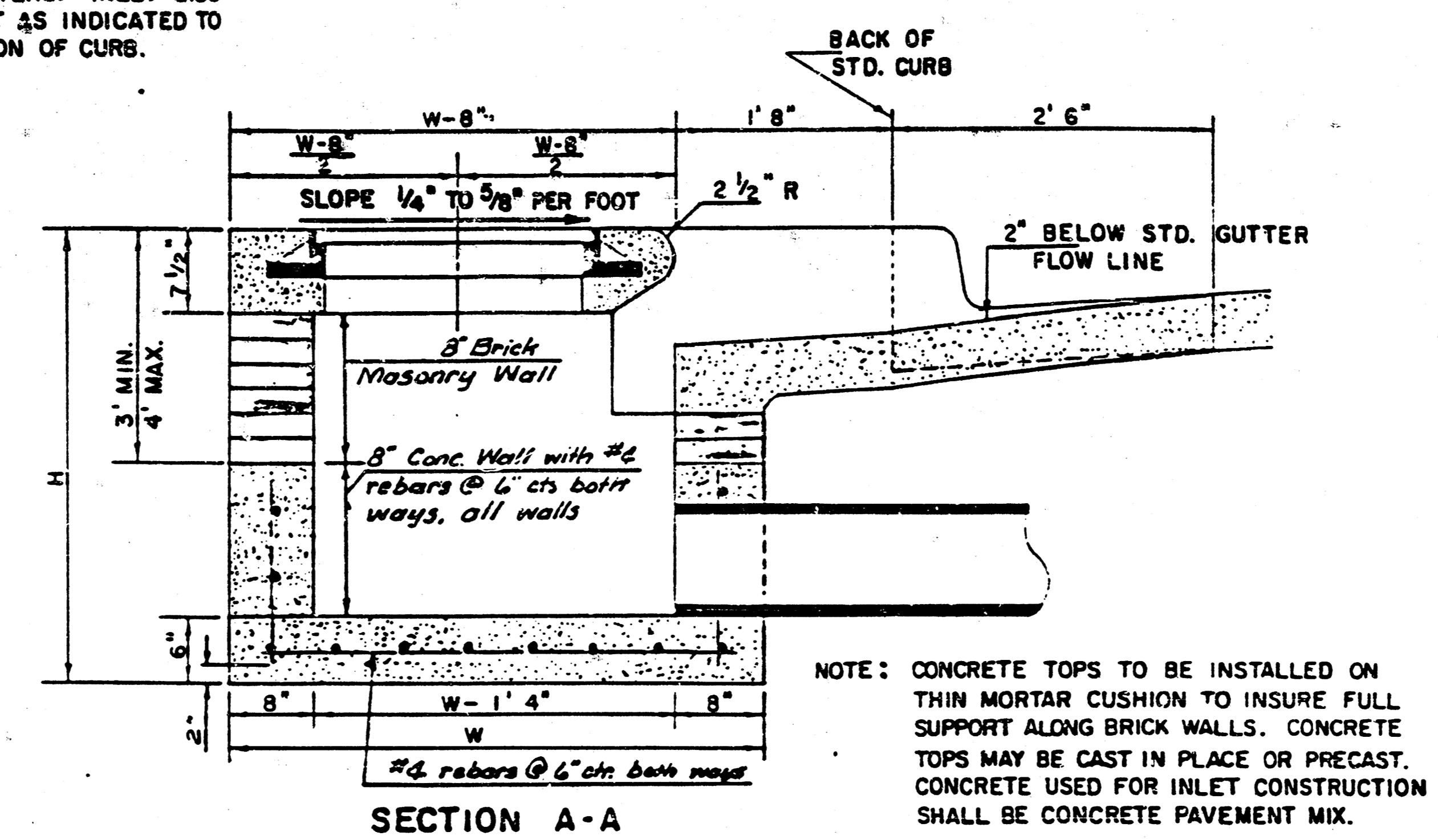
BAR NUMBER	a ₁	a ₂	a ₃	D ₁				b ₂	b ₃	b ₄	WT. LBS.	
	4	4	2	1	3	5	7	9	6	1	1	
SIZE	#4	#4	#4	#4	#4	#4	#4	#4	#4	#6		
W=4'4"	5'7"	6'7"	4'0"	6'1"	-	-	-	-	1'9"	6'2"	4'8"	60±
W=5'4"	7'7"	8'7"	5'0"	6'1"	-	-	-	-	1'9"	6'2"	4'8"	81±
W=6'4"	9'7"	10'7"	6'0"	6'1"	-	-	-	-	1'9"	6'2"	4'8"	101±
W=7'4"	11'7"	12'7"	7'0"	6'1"	-	-	-	-	1'9"	6'2"	4'8"	121±
W=8'4"	13'7"	14'7"	8'0"	6'1"	-	-	-	-	1'9"	6'2"	4'8"	141±

* NOTE: a₃ BARS TO BE PLACED APPROX. 2" BELOW TOP OF INLET COVER

BENDING DIAGRAM

STANDARD CURB INLET PRECAST TOPS

W	PRE-CAST TOP SIZE	PIPE SIZE	CU. YD. CONC.
4' 4"	3'6" x 6'4" x 7 1/2"	21" & SMALLER	0.38 ±
5' 4"	4'6" x 6'4" x 7 1/2"	24" & 30"	0.51 ±
6' 4"	5'6" x 6'4" x 7 1/2"	36" & 42"	0.64 ±
7' 4"	6'6" x 6'4" x 7 1/2"	48" & 54"	0.77 ±
8' 4"	7'6" x 6'4" x 7 1/2"	60" & 66"	0.90 ±



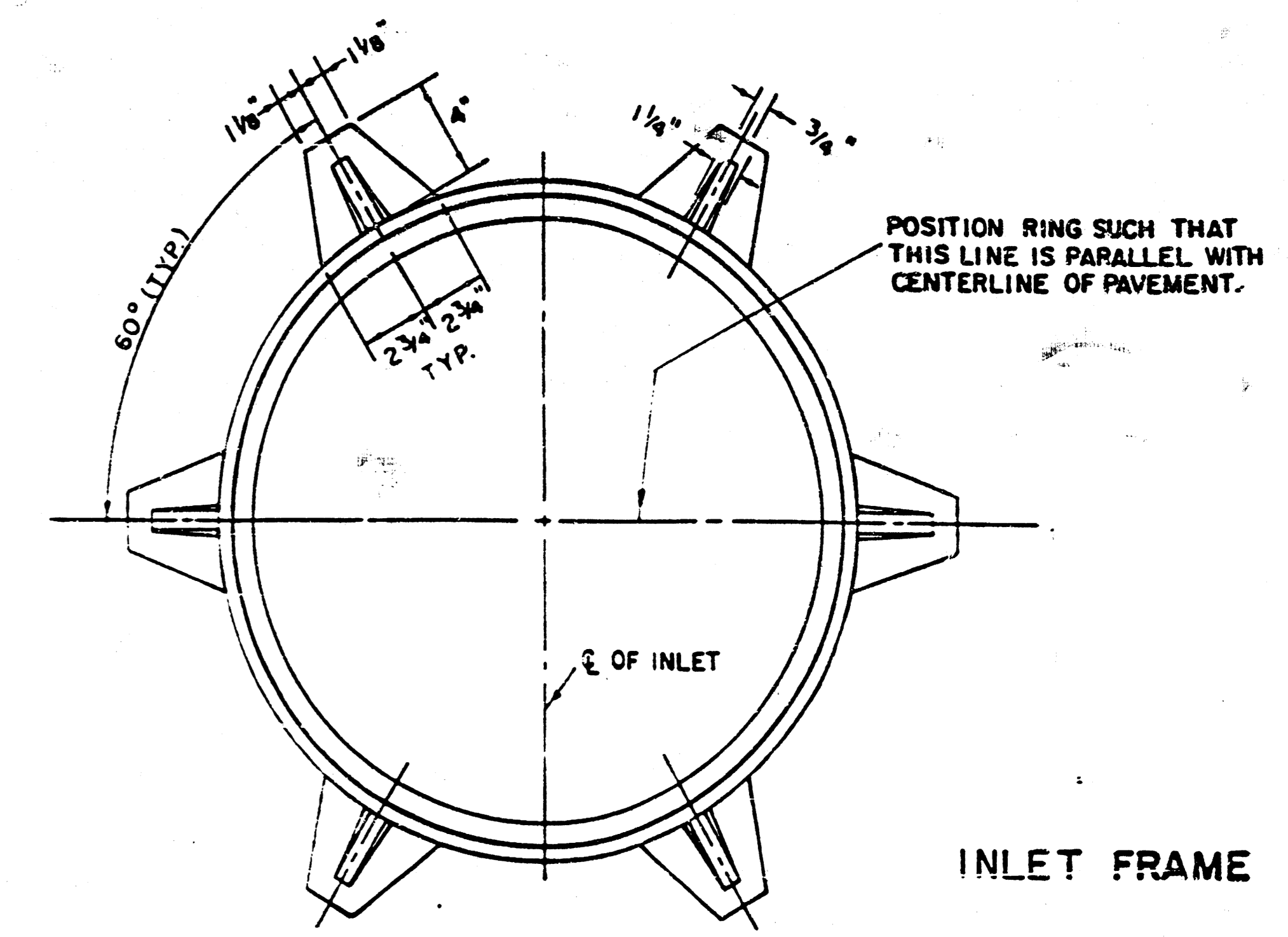
SECTION A-A

NOTE: CONTRACTOR SHALL HAVE THE OPTION OF CONSTRUCTING 8" BRICK MASONRY WALLS BETWEEN THE CONCRETE INLET BASE AND TOP ON THIS INLET WHEN H = 6'4" AND H = 7'0" OR LESS.

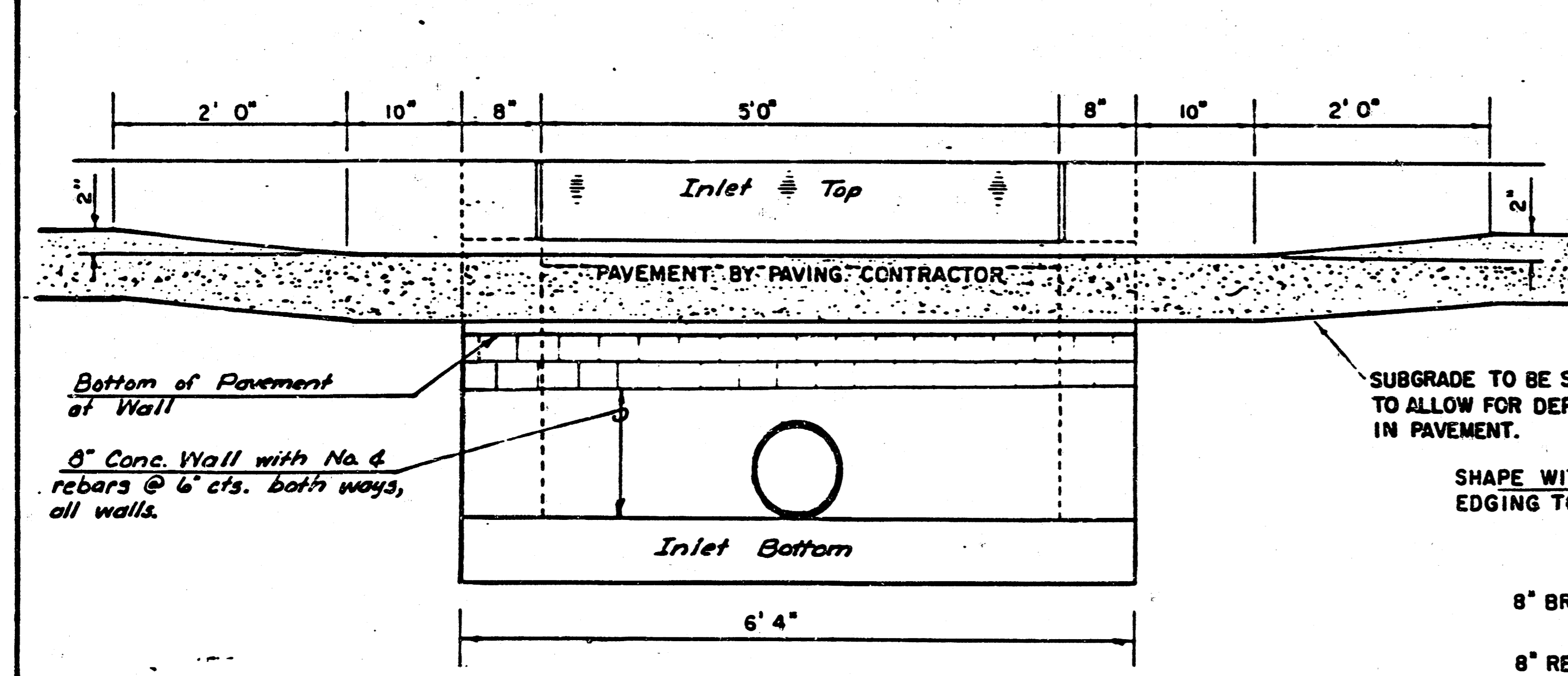
ADDITIONAL CURB AND GUTTER CONSTRUCTION NECESSARY TO CONNECT SET-BACK INLET TO PAVEMENT WILL BE PAID FOR AT THE UNIT PRICE BID FOR EACH INLET HOOKUP.

INLET INVERT SHALL BE SHAPED WITH 8 SACK SAND MIX CONCRETE TO CREATE FLOW CHANNELS AND TO INCREASE HYDRAULIC EFFICIENCY SUCH THAT THE INLET WILL BE SELF CLEANING BETWEEN ALL INLET AND/OR OUTLET PIPES.

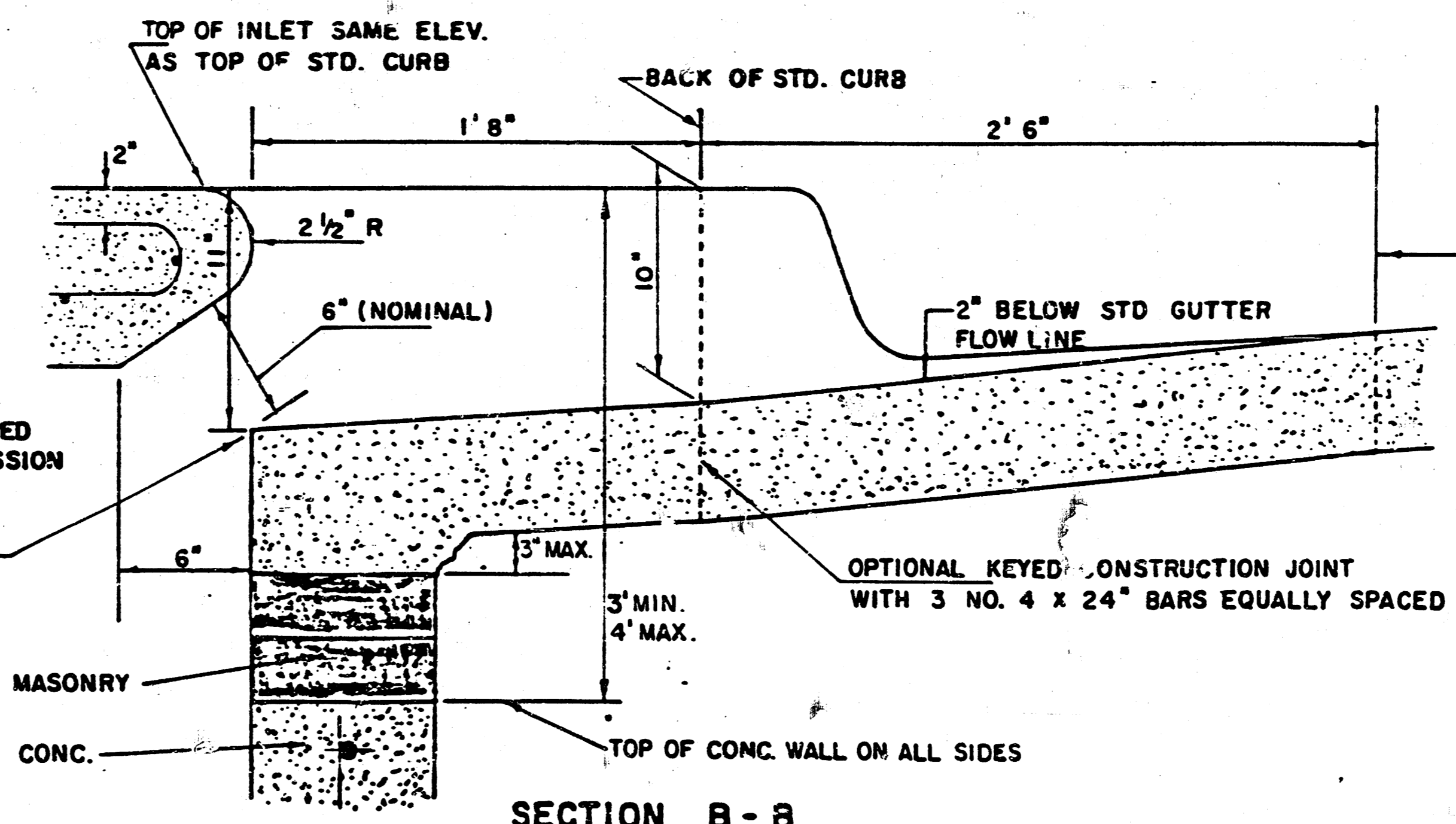
THE ENDS OF ALL PIPES INSTALLED IN INLETS SHALL BE CUT OFF FLUSH WITH THE INSIDE FACE OF THE INLET WALL.



SEE CITY OF WICHITA STANDARD MANHOLE FRAME AND COVER DETAIL SHEET FOR COVER DETAILS TO BE USED WITH INLET FRAME.



SECTION C-C

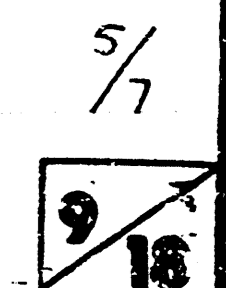


SECTION B-B

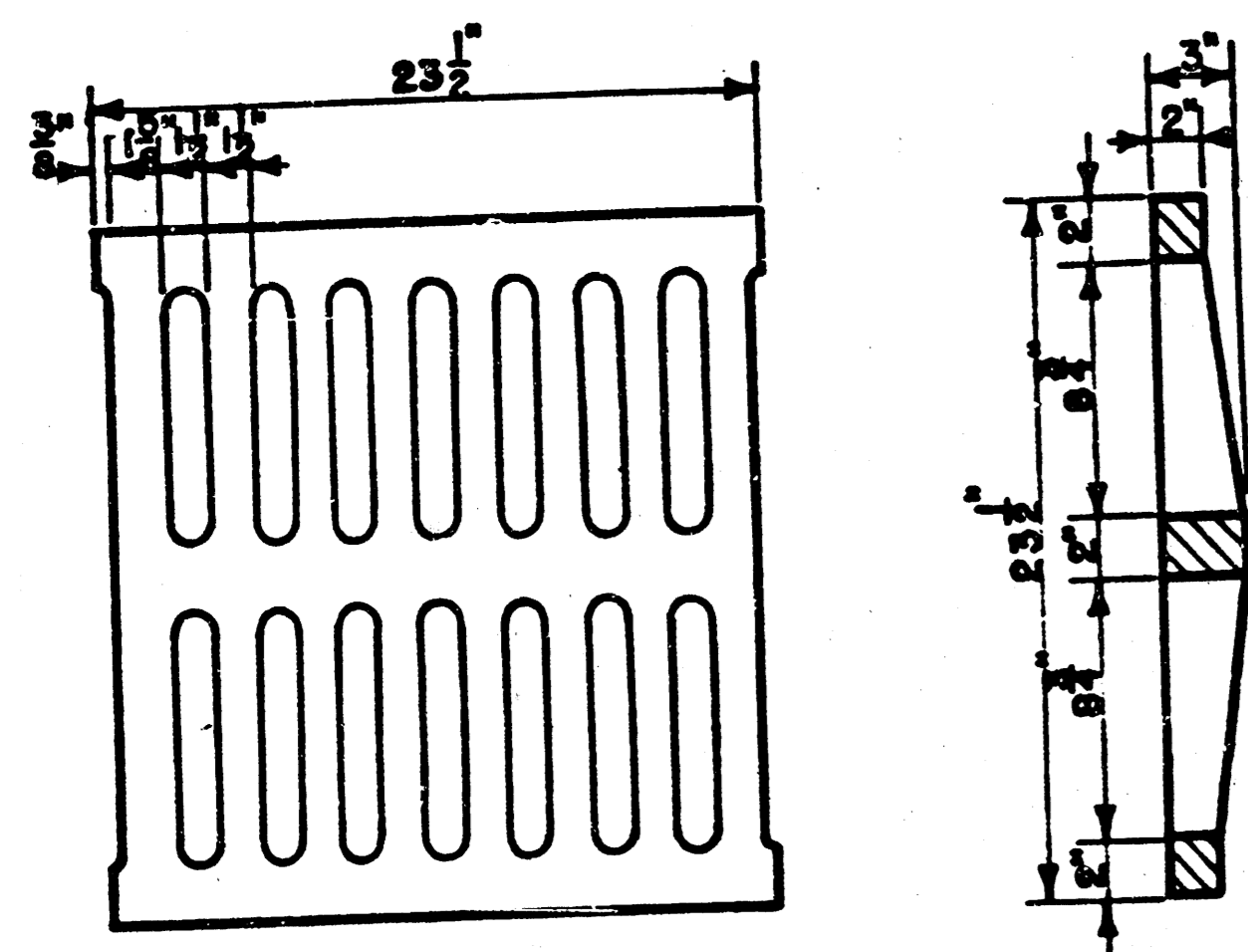
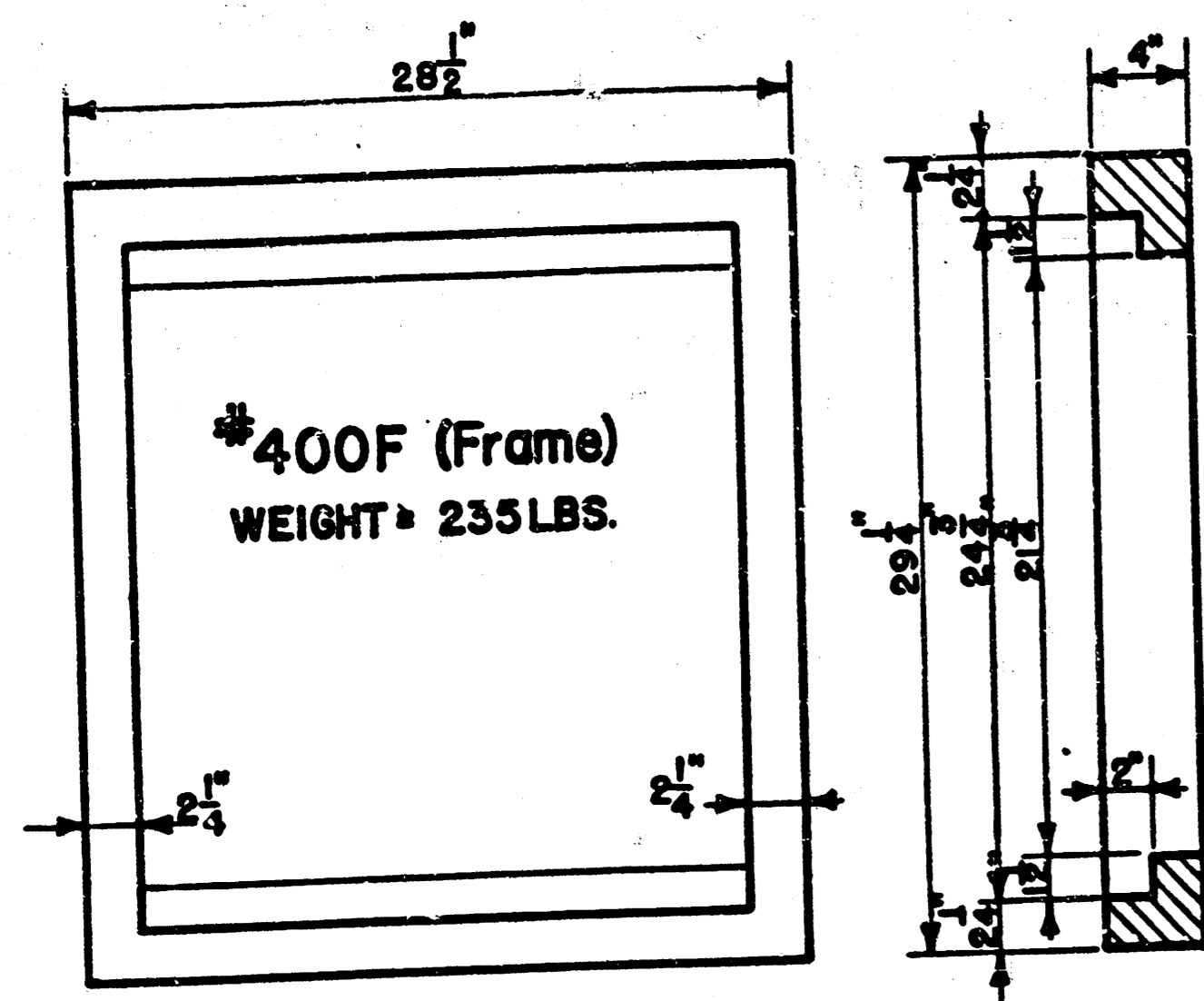
REVISED 12-21-1984

DETAIL STANDARD TYPE IA CURB INLET
 CITY OF WICHITA, KANSAS
 INLET OPENING = 6" x 5' 0"

JUNE 1984

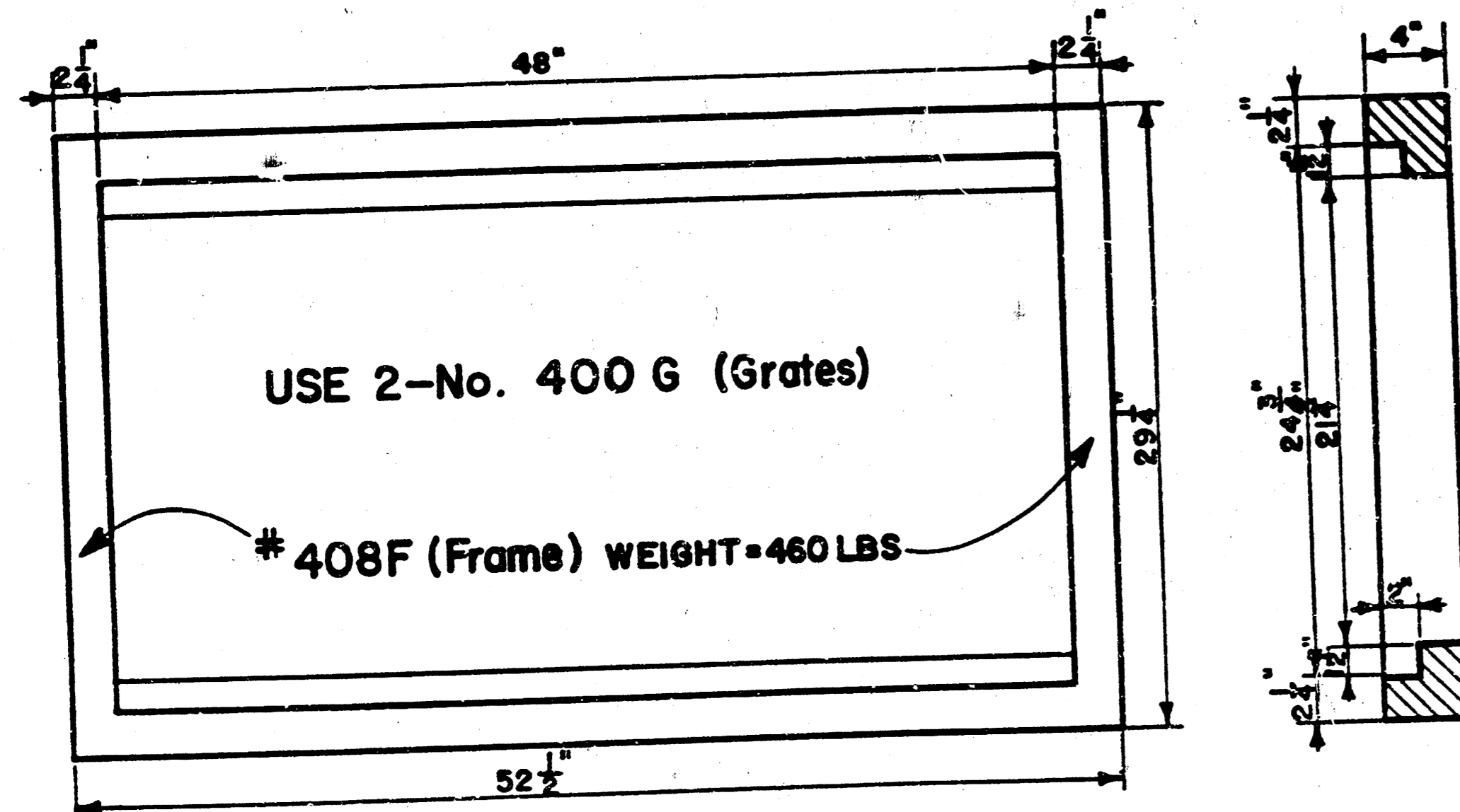


NOTE: Grates shall be imprinted on the top surface with "CITY OF WICHITA" using letters at least 1" in height. Other marking methods may be used only if approved by the engineer.

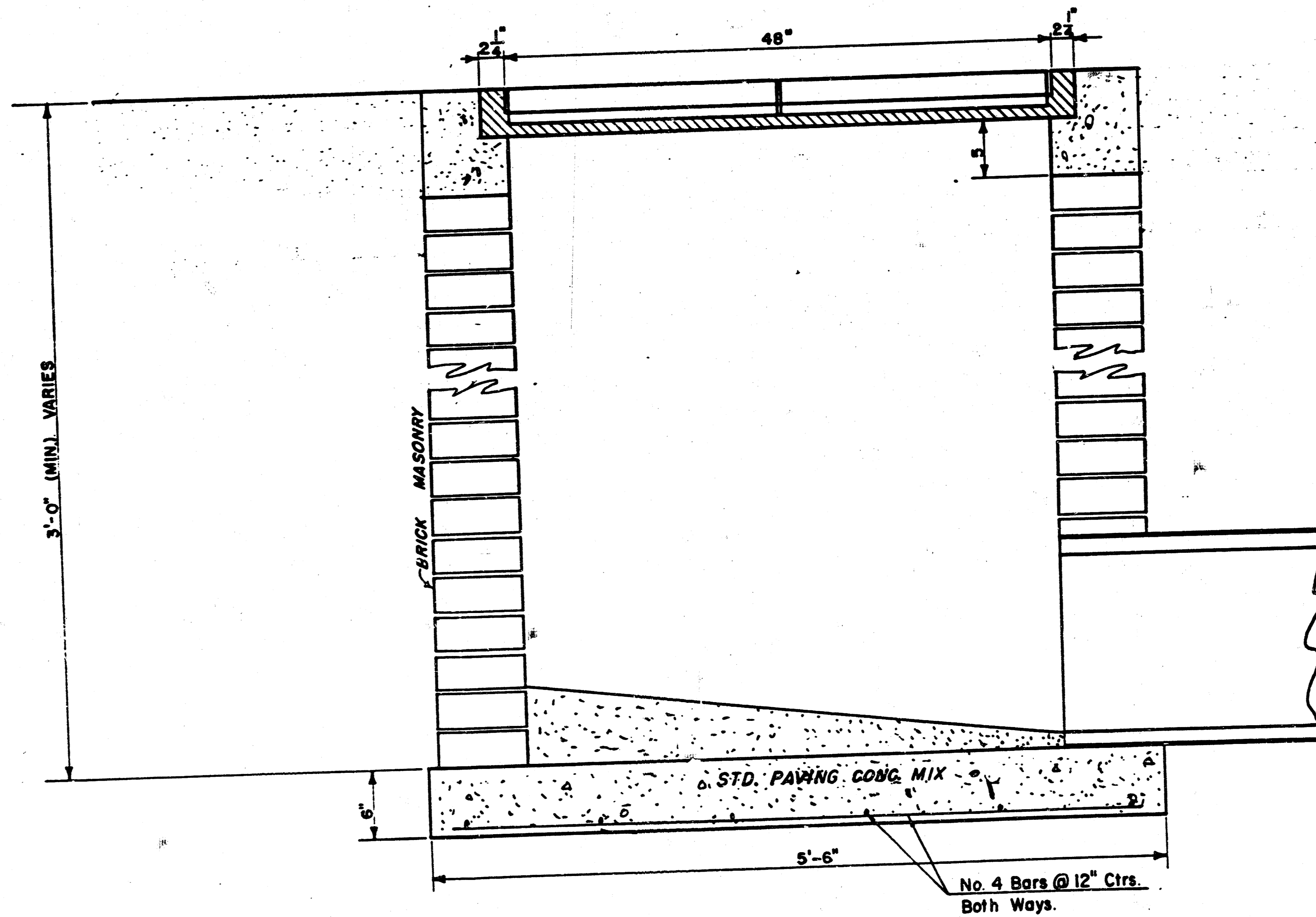
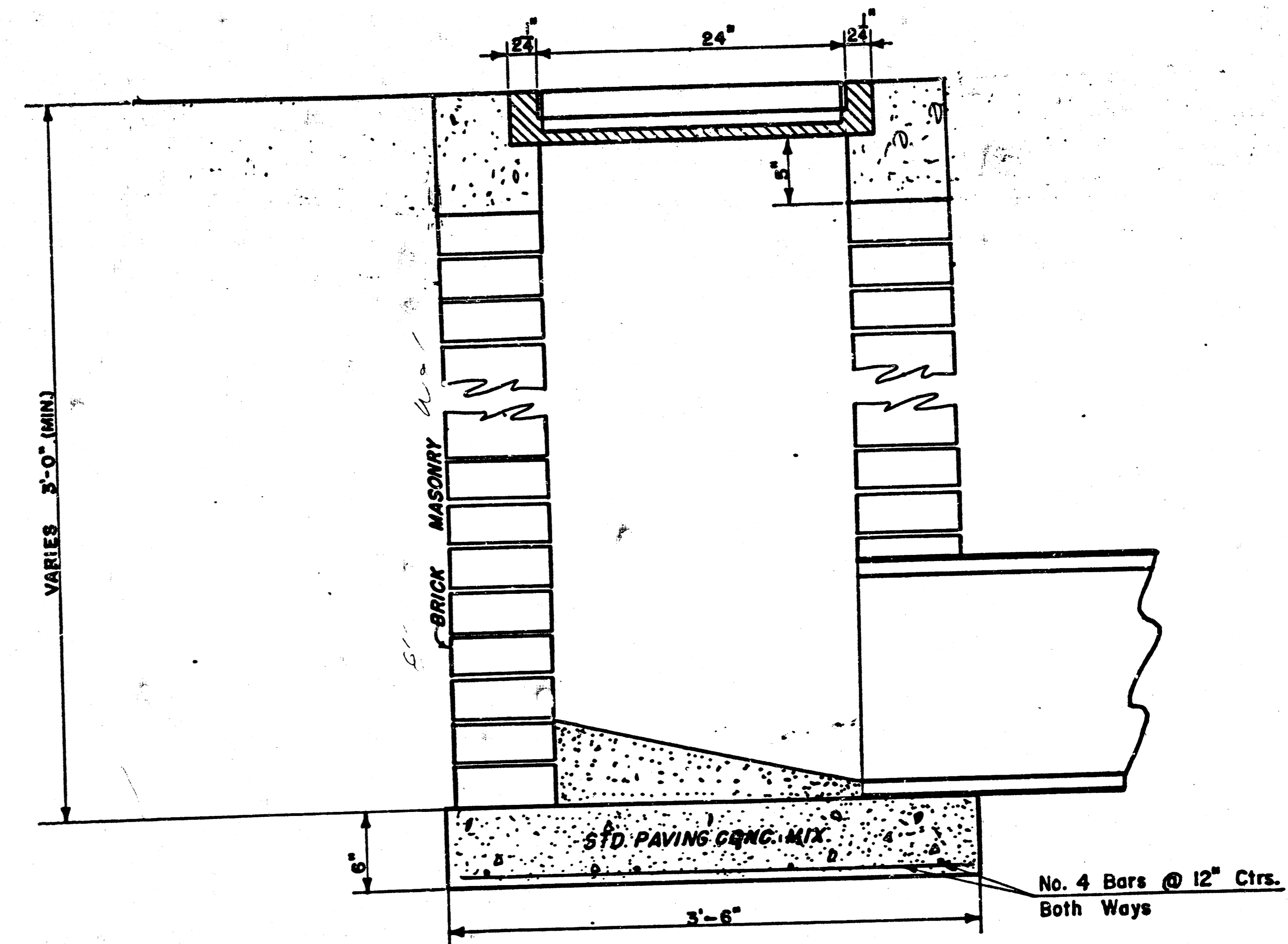
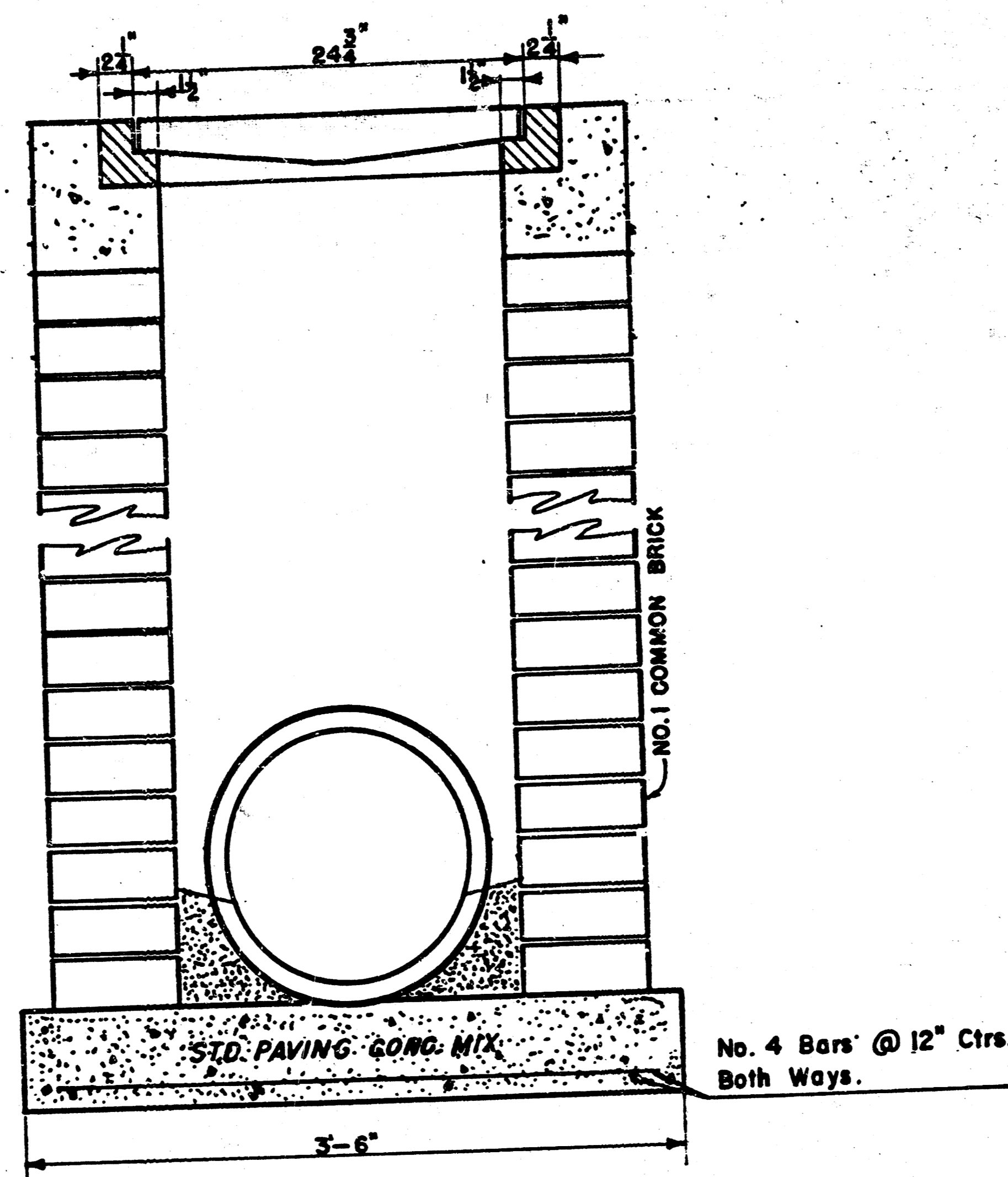


400G (Grate)
WEIGHT = 236 LBS

24"x24" Frame & Grate Detail



Double 24"x24" Frame Detail



DROP INLET DETAILS

M.E. Lindebak, City Engineer
City of Wichita, Kansas
Project
Project No. 7/
Date:
Scale: 1-1/2" = 1'-0"

11/18

10 1 1 1