

STORM SEWER PLANS FOR WOODLAND ESTATES SECOND

S.W.S. NO. 324
PROJECT NO.

468-76-245-81638-000-000-001

CITY OF WICHITA, KANSAS
MICHAEL E. LINDEBAK, CITY ENGINEER
FEBRUARY, 1987

GENERAL NOTES

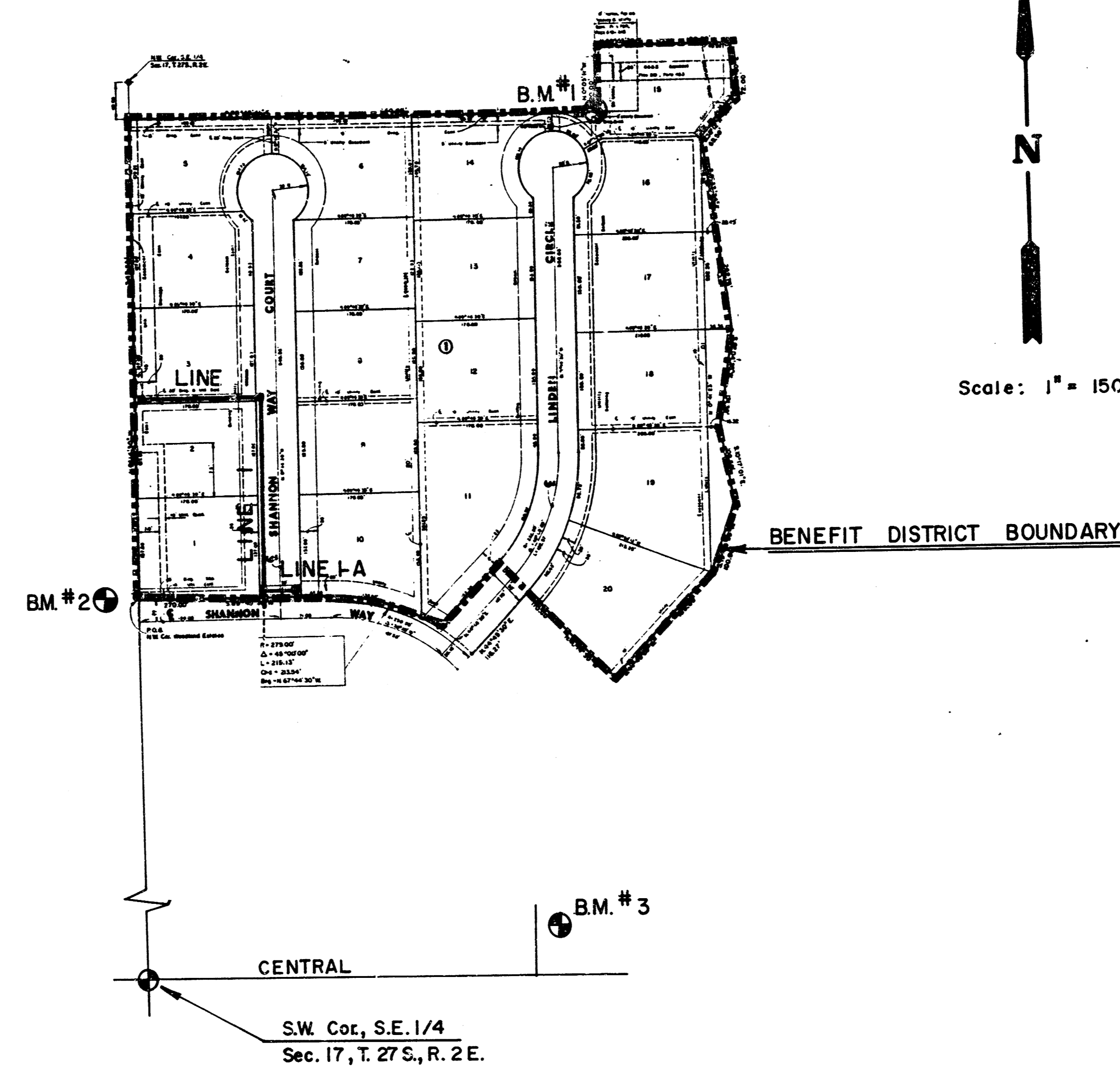
1. THE TOPS OF INLETS AS NOTED ON THE PLANS MAY VARY SO AS TO MEET PROPOSED TOP OF CURB ELEVATIONS OR PAVEMENT ELEVATIONS. THE FIELD ENGINEER SHALL LOCATE INLETS WITH REFERENCE TO PROPOSED PAVING PLANS OF THE PERTINENT STREETS.
2. THE CONTRACTOR SHALL BE RESPONSIBLE FOR PRESERVING PROPERTY IRONS. THE CONTRACTOR SHALL BE REQUIRED TO RE-ESTABLISH ANY PROPERTY IRONS WHICH ARE DAMAGED OR DESTROYED BY HIS CONSTRUCTION OPERATIONS. SUCH IRONS SHALL BE RE-ESTABLISHED BY A LICENSED LAND SURVEYOR OR A LICENSED PROFESSIONAL ENGINEER IN ACCORDANCE WITH STATE LAWS.
3. CONTRACTOR SHALL NOTIFY THE UTILITY COMPANIES OF CONSTRUCTION SCHEDULING.
4. EXISTING UTILITIES AND THEIR LOCATIONS, AS SHOWN ON THE PLANS, REPRESENT THE BEST INFORMATION OBTAINABLE FOR DESIGN. LOCATION INFORMATION HAS BEEN OBTAINED FROM THE VARIOUS UTILITY COMPANIES AND IS EITHER FROM COMPANY RECORD DRAWINGS OR COMPANY PROVIDED FIELD LOCATIONS. THE PLAN LOCATIONS SHOWN ARE NOT GUARANTEED. ADDITIONAL EXISTING UTILITIES MAY ALSO BE ENCOUNTERED.
5. TREES ARE AN IMPORTANT ASSET IN THIS DEVELOPMENT. A PRECONSTRUCTION CONFERENCE SHALL BE HELD TO DETERMINE WHICH TREES, IF ANY, SHALL BE REMOVED. THE CONFERENCE SHALL INCLUDE THE DEVELOPER OR HIS AGENT.

NOTE: NOTIFY THE FOLLOWING COMPANIES PRIOR TO ANY EXCAVATION:

ARKLA GAS COMPANY	942-8350
BELL TELEPHONE	1-316-571-2115
CABLEVISION	262-0661
KPL GAS SERVICE COMPANY	263-7511
KANSAS GAS & ELECTRIC	264-1141
KANSAS ONE-CALL	1-800-344-7233

BENCH MARKS

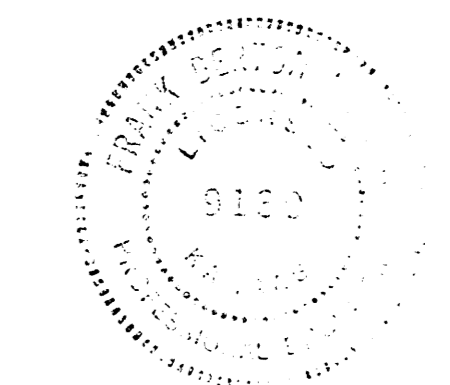
- B.M. #1: SPK STEP IN COR. FC POST 660' E. & 40' S. OF CTR. SEC. 17, R2E
ELEV. = 176.09'
- B.M. #2: " " ON TOP OF S. CURB SHANNON WAY
44' W. OF W. LINE OF WOODLAND ESTATES
ELEV. = 173.90'
- B.M. #3: CITY OF WICHITA BENCH MARK DISC. ON THE N.E. COR. OF RCB AT CENTRAL & GYPSUM CREEK
ELEV. = 157.24'



INDEX TO DRAWING

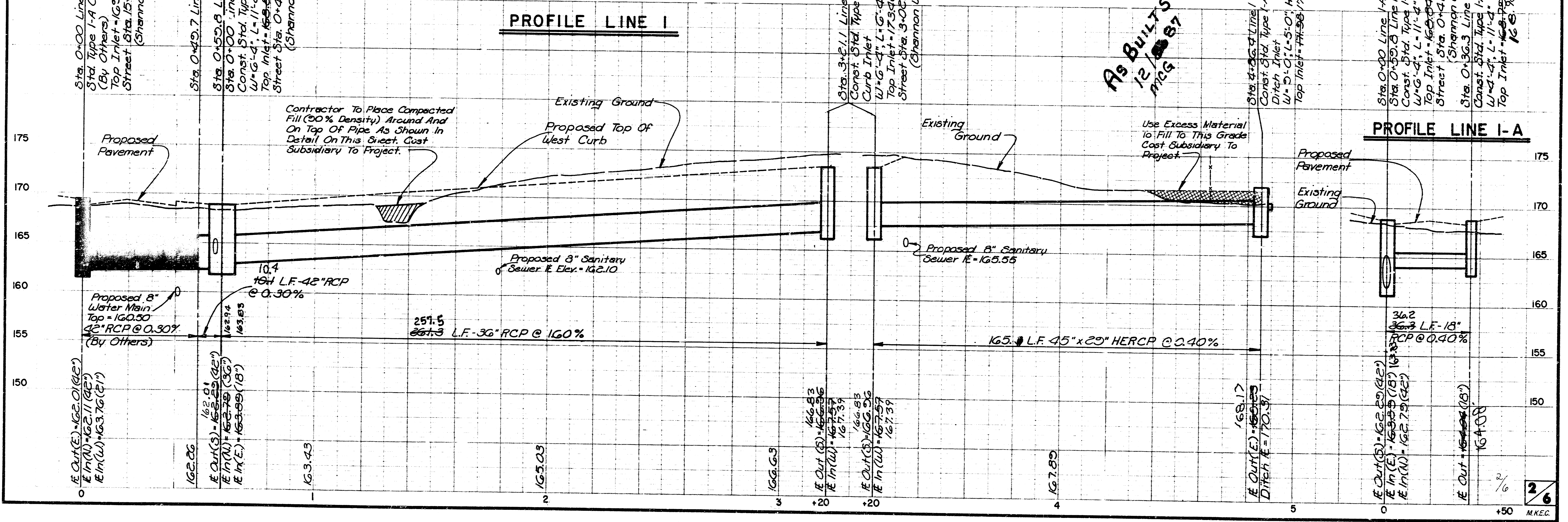
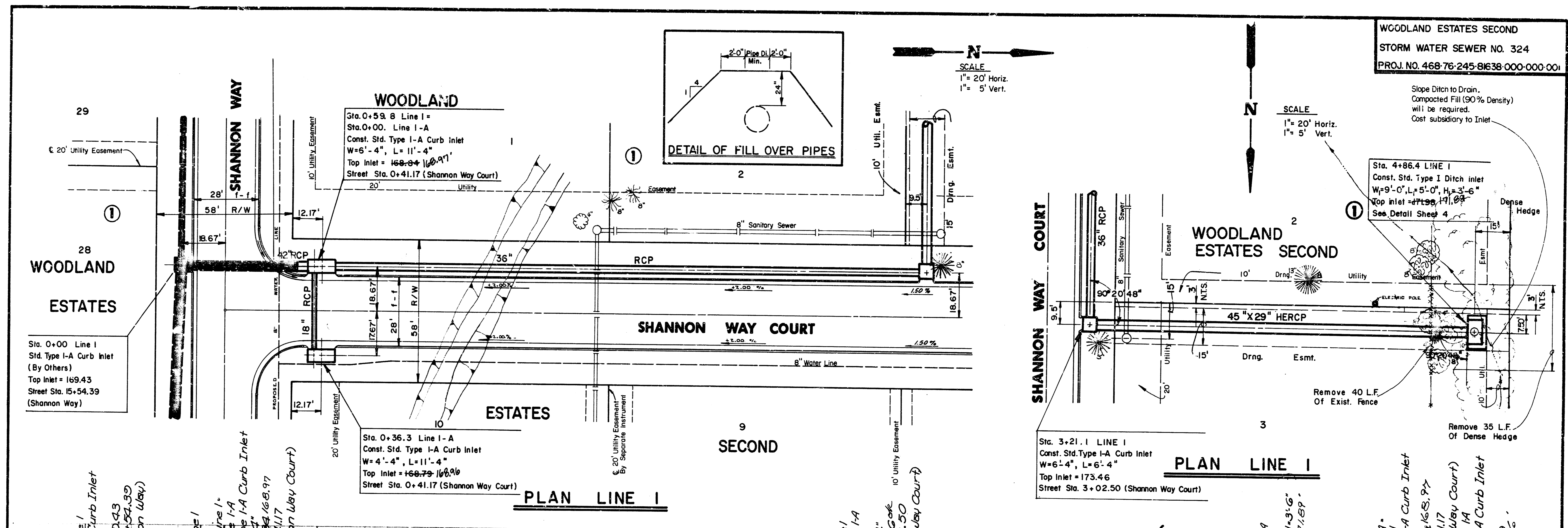
Sheet No.	Description
1	TITLE SHEET
2	LINE I & LINE I-A
3-4	CURB INLET DETAILS
5	DITCH INLET DETAILS
6	FINAL PLAT

*As BUILT
12/87
mcg*

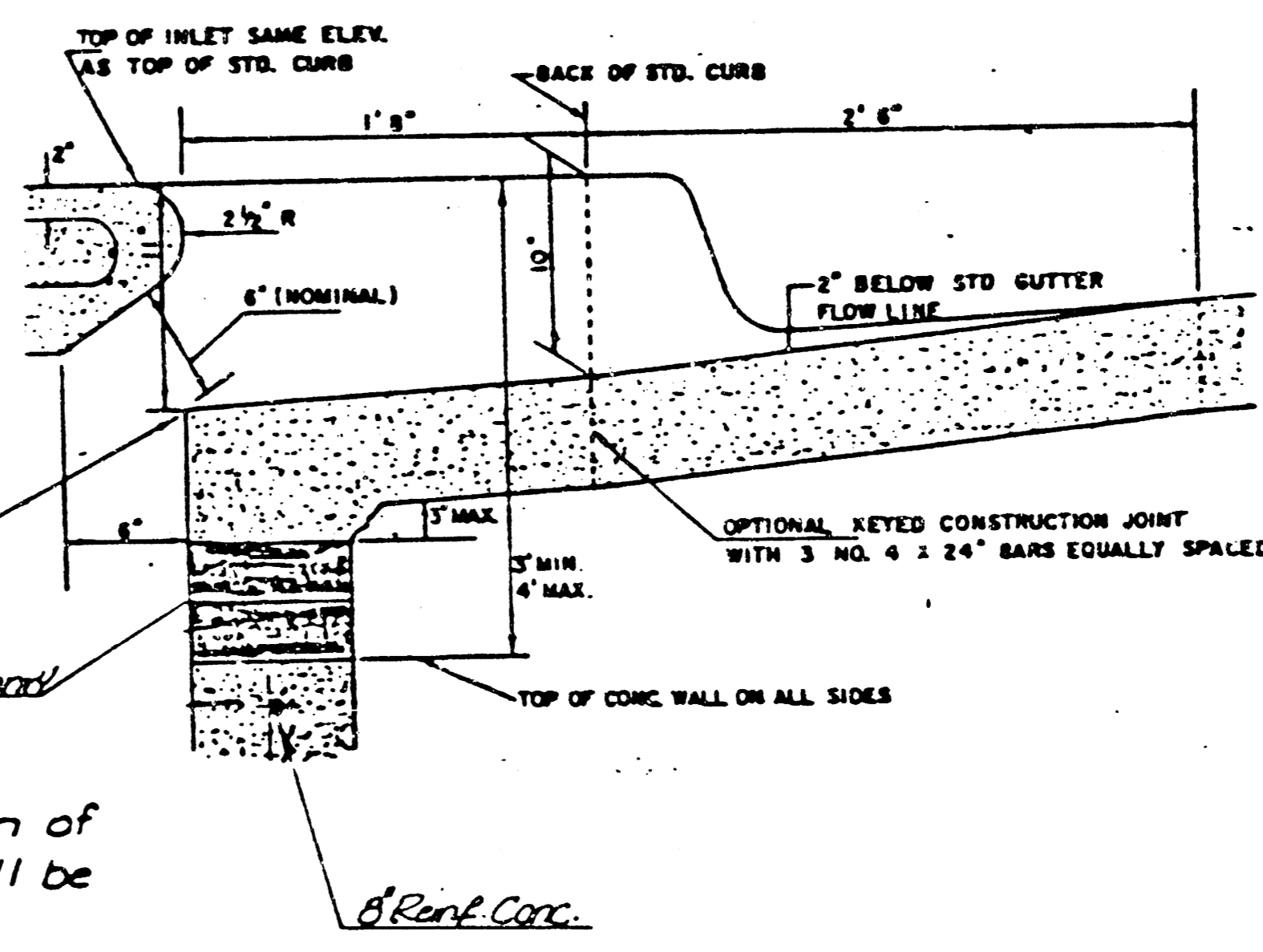
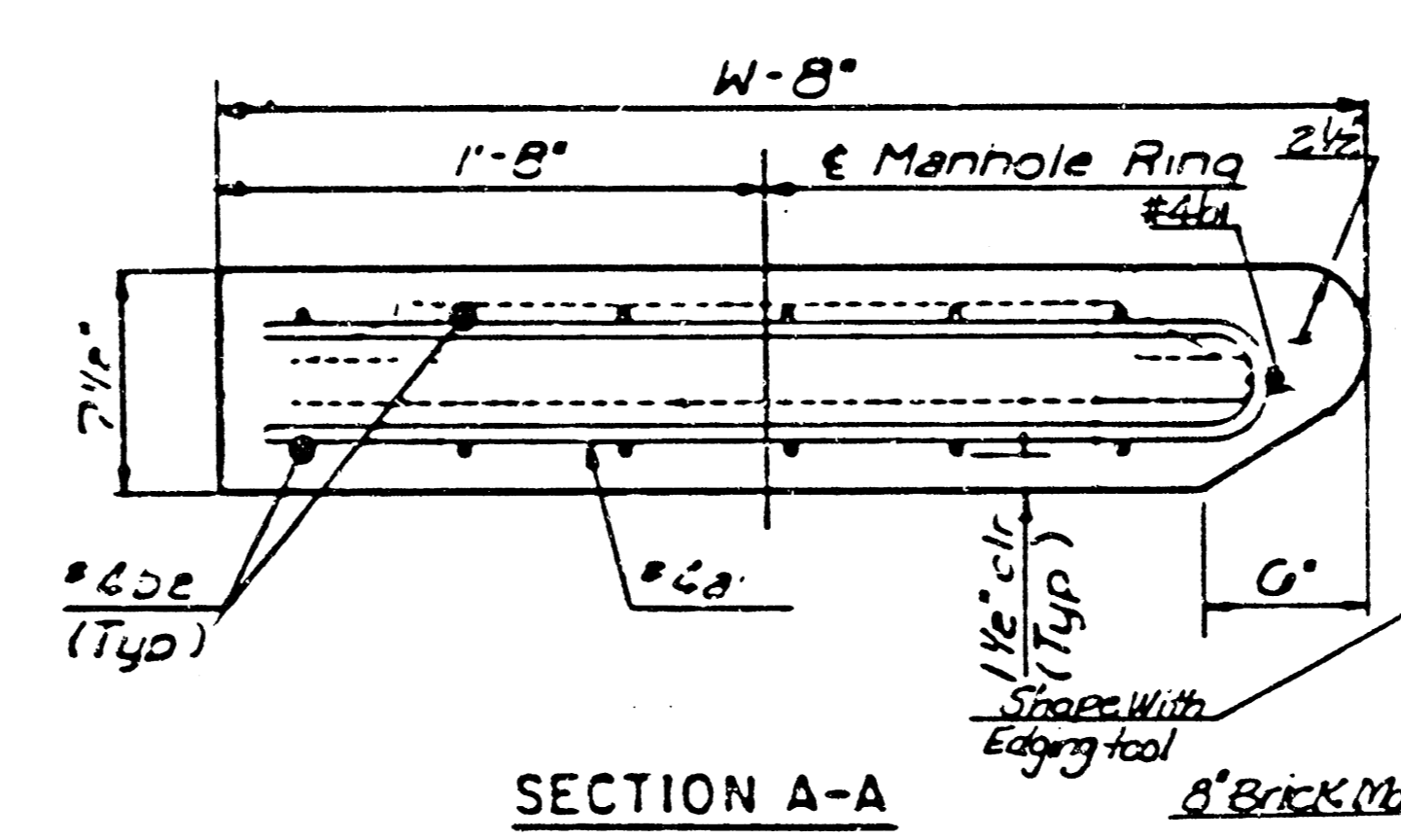
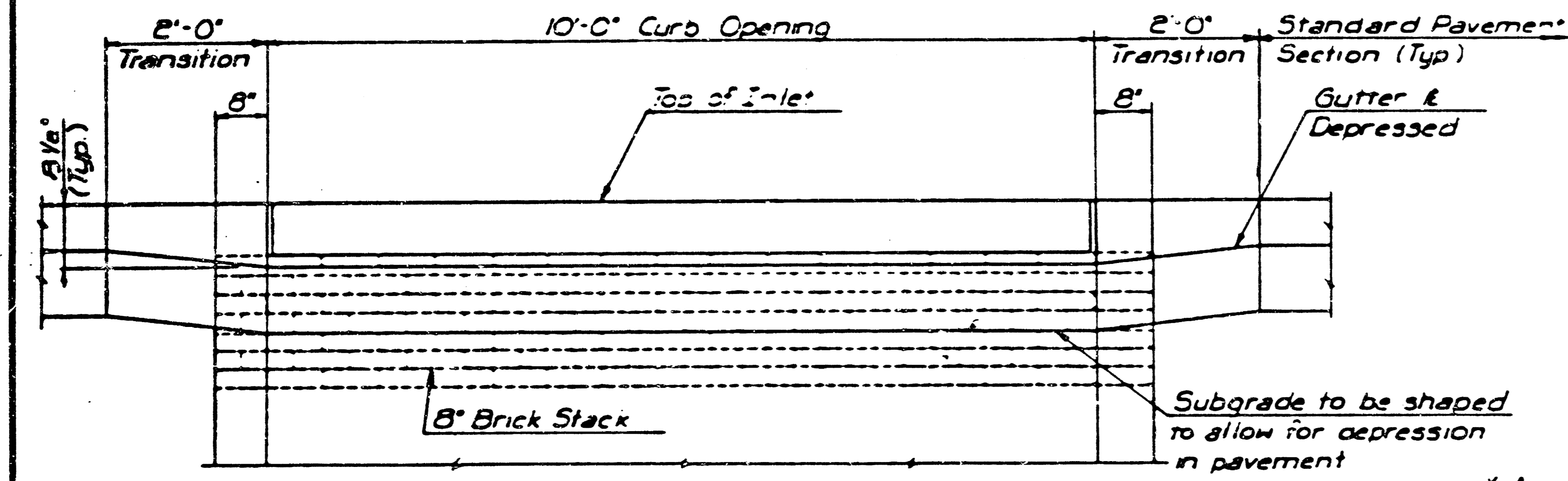
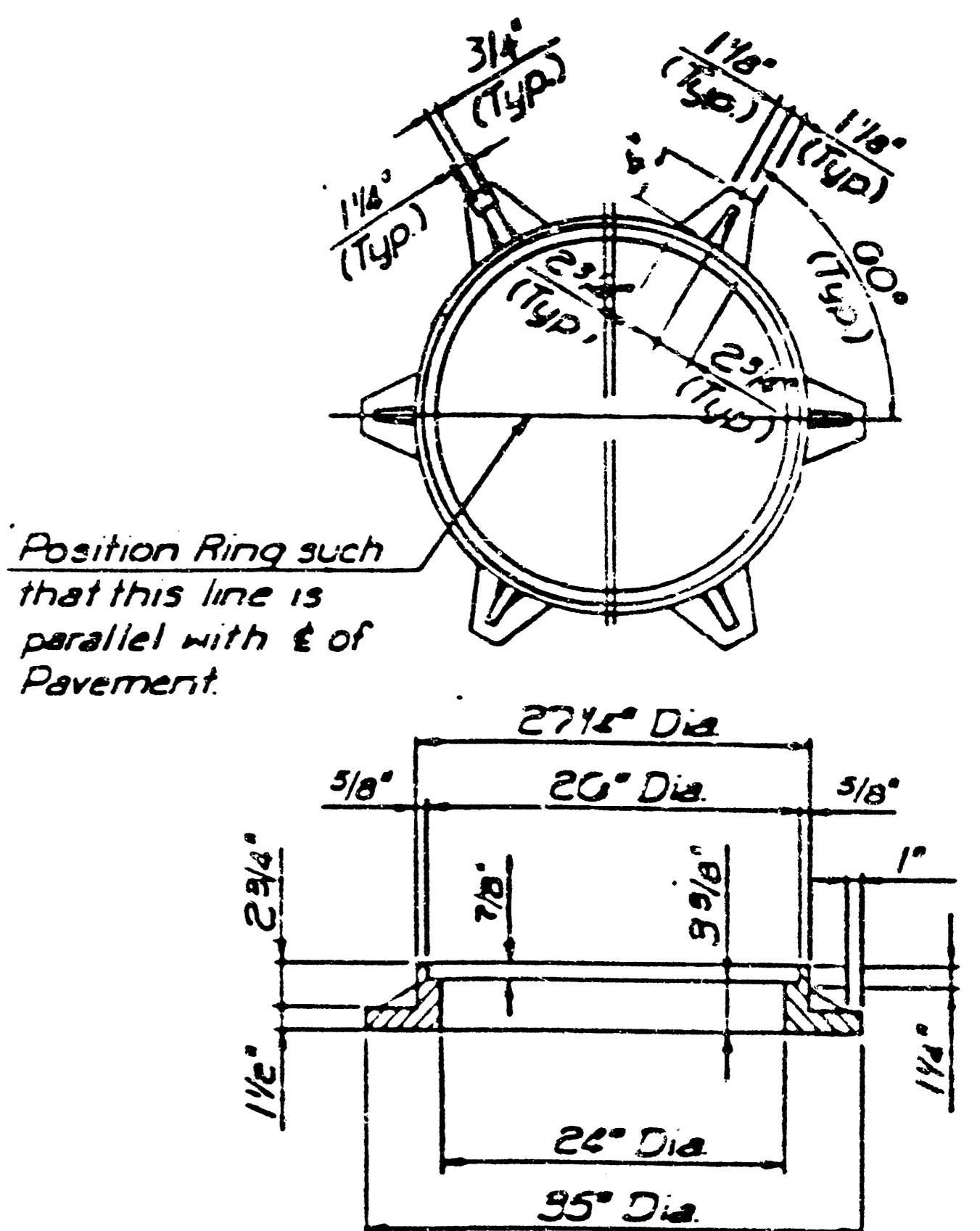
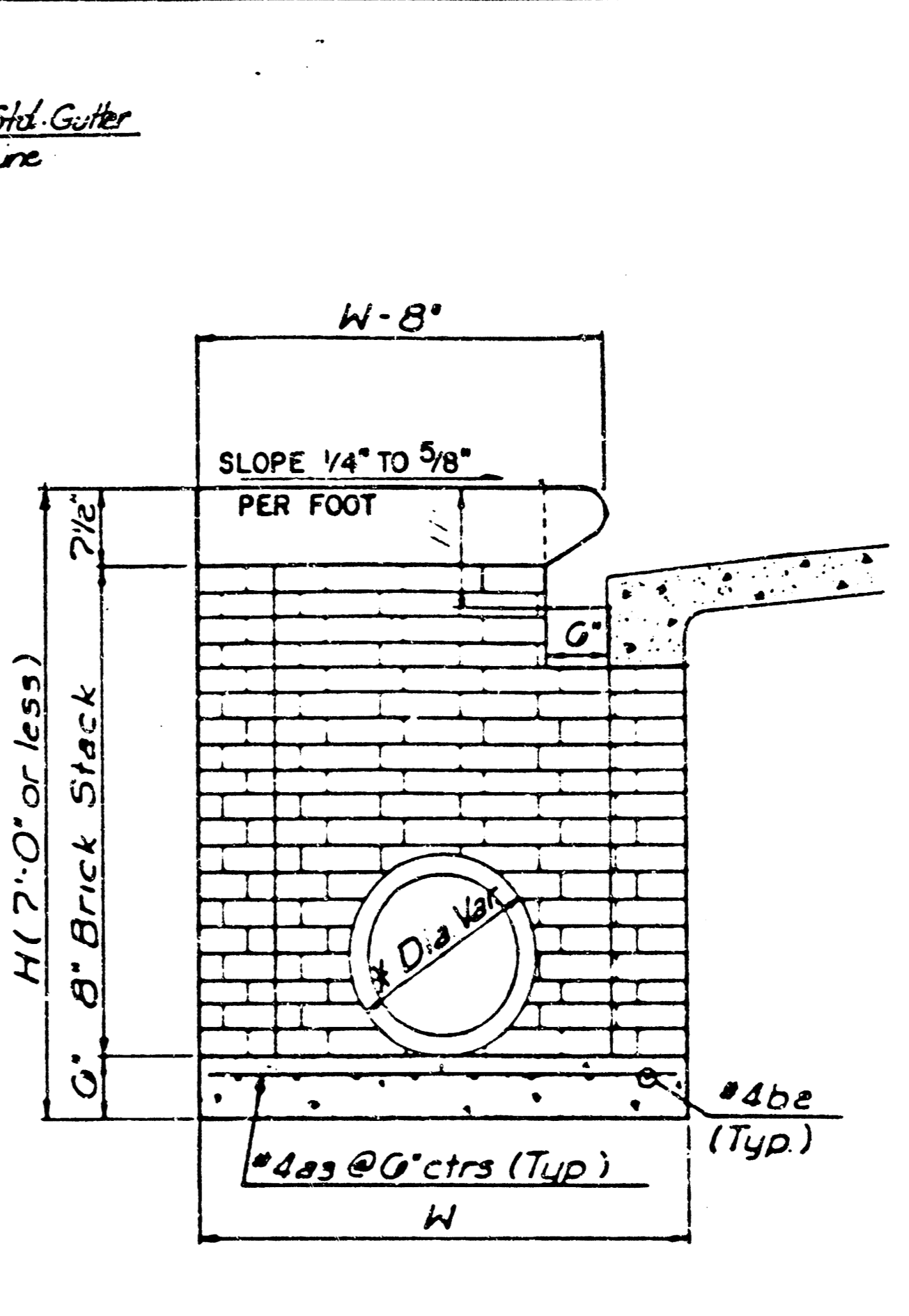
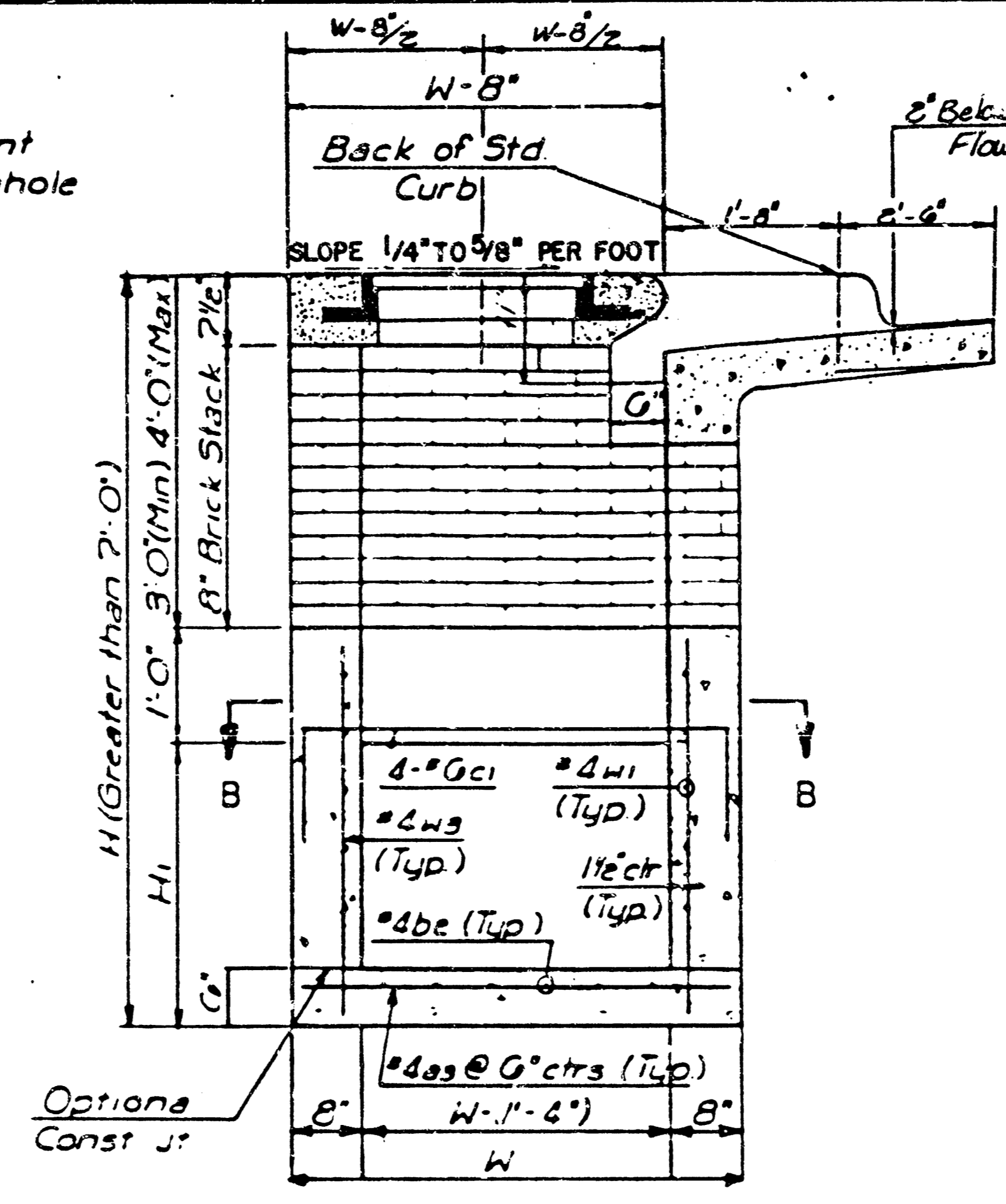
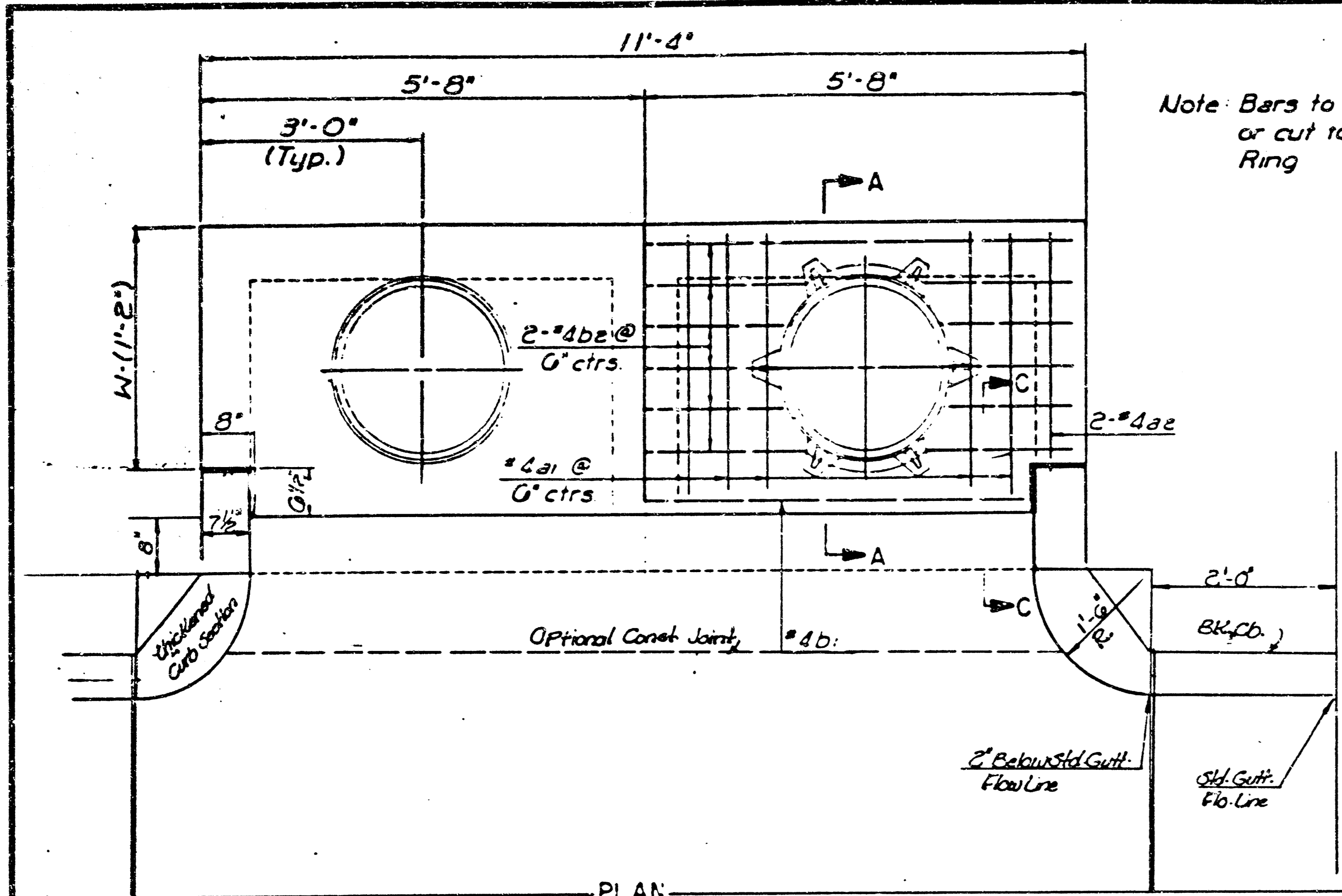


	WOODLAND ESTATES SECOND STORM SEWER PLANS	Design FBN Drawn by SJM Checked by KHB Date February, 1987 Job no.
	MID-KANSAS ENGINEERING CONSULTANTS PA 3500 NORTH ROCK ROAD BUILDING 1800 WICHITA, KANSAS 67226	682-6561

FILMED FROM THE BEST AVAILABLE COPY.....



FILMED FROM THE BEST AVAILABLE COPY.....



SEE CITY OF WICHITA STANDARD MANHOLE FRAME AND COVER DETAIL SHEET FOR COVER DETAILS TO BE USED WITH INLET FRAME.

GENERAL NOTES
 Concrete shall be COW Standard Paving Mix All exposed edges shall be finished with an edging tool
 Reinforcing Bars shall be field bent or cut to clear pipes
 All bars are #4 bars at G-spacing and shall have a minimum clearance of 1/2" unless otherwise noted
 Floors of inlets shall be shaped with 3 Sack Sand Mix Concrete to increase hydraulic efficiency such that the inlet will be self cleaning between all inlet and/or outfall pipe(s).
 The Contractor shall have the option of constructing 8" Brick Masonry Walls between the concrete inlet base and top on this inlet when H=7'-0" or less and W=6'-4" or less.

* A center wall opening shall be provided by means of a section of reinforced concrete pipe. The minimum diameter used shall be that of the outlet pipe.

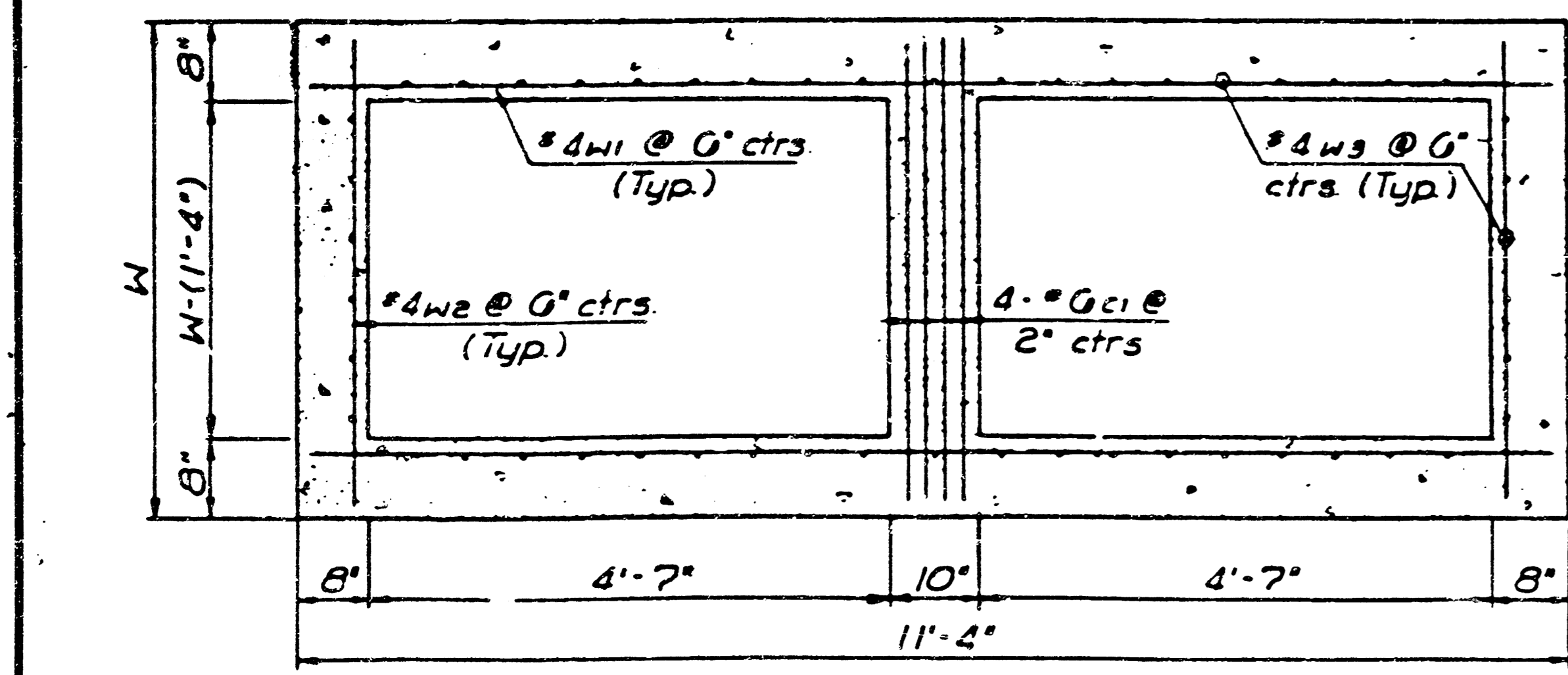
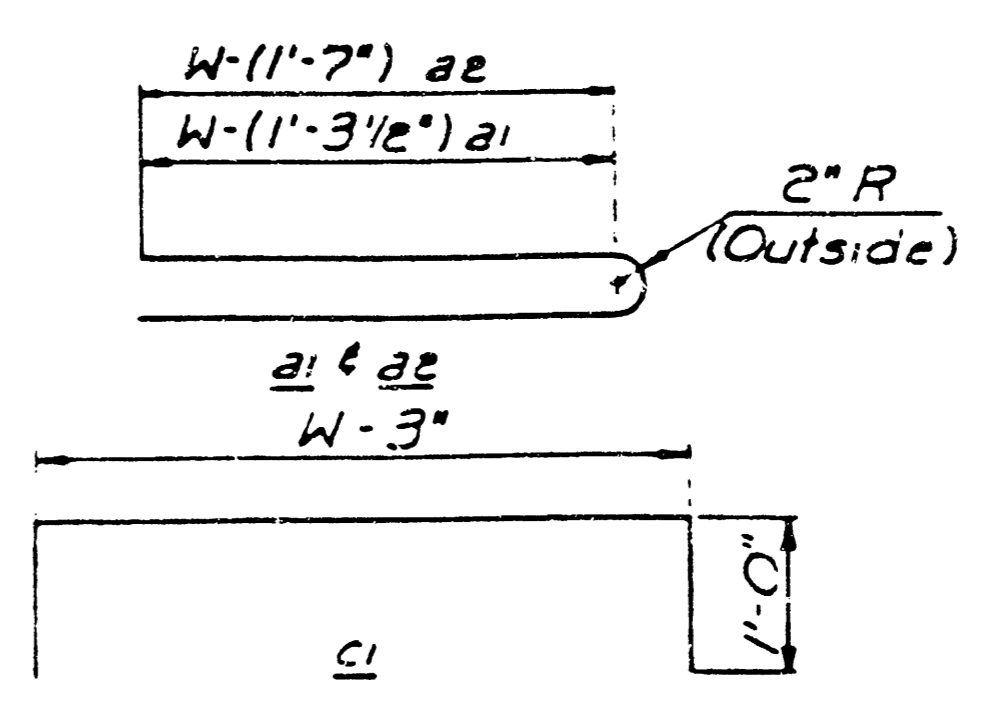
Note Concrete top is to be installed on thin mortar cushion to insure full support along walls

THE ENDS OF ALL PIPES INSTALLED IN INLETS SHALL BE CUT OFF FLUSH WITH THE INSIDE FACE OF THE INLET WALL.

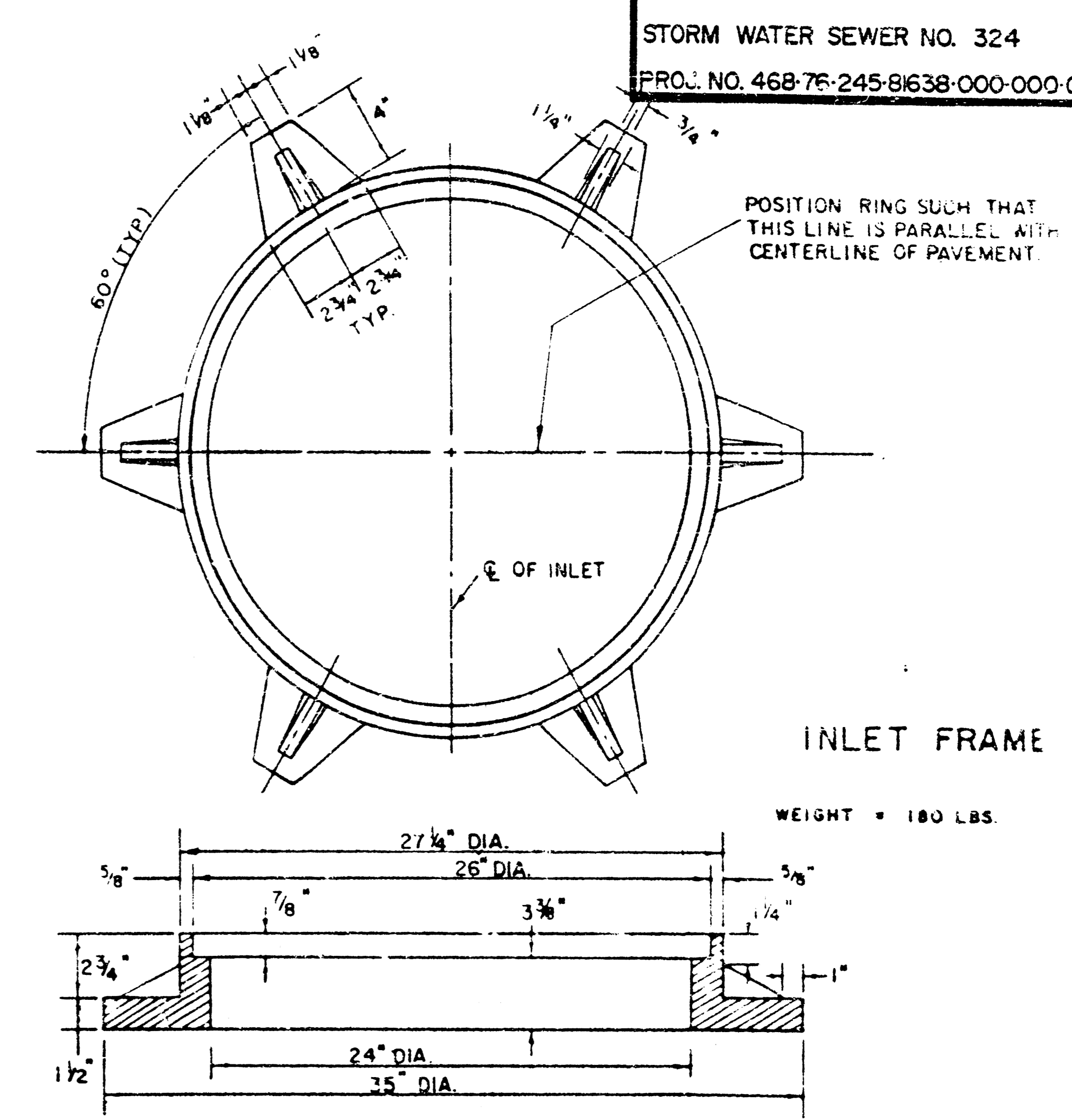
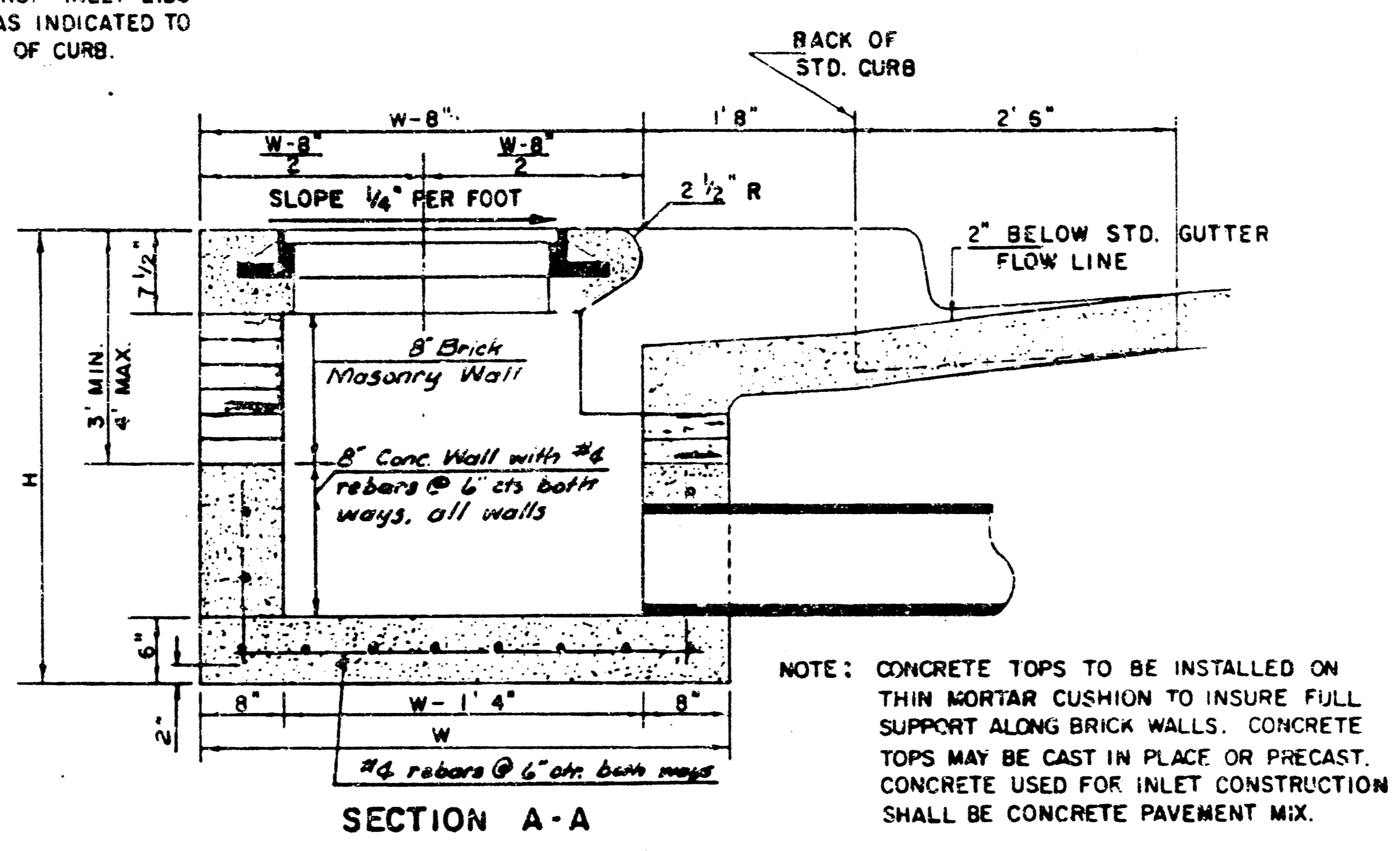
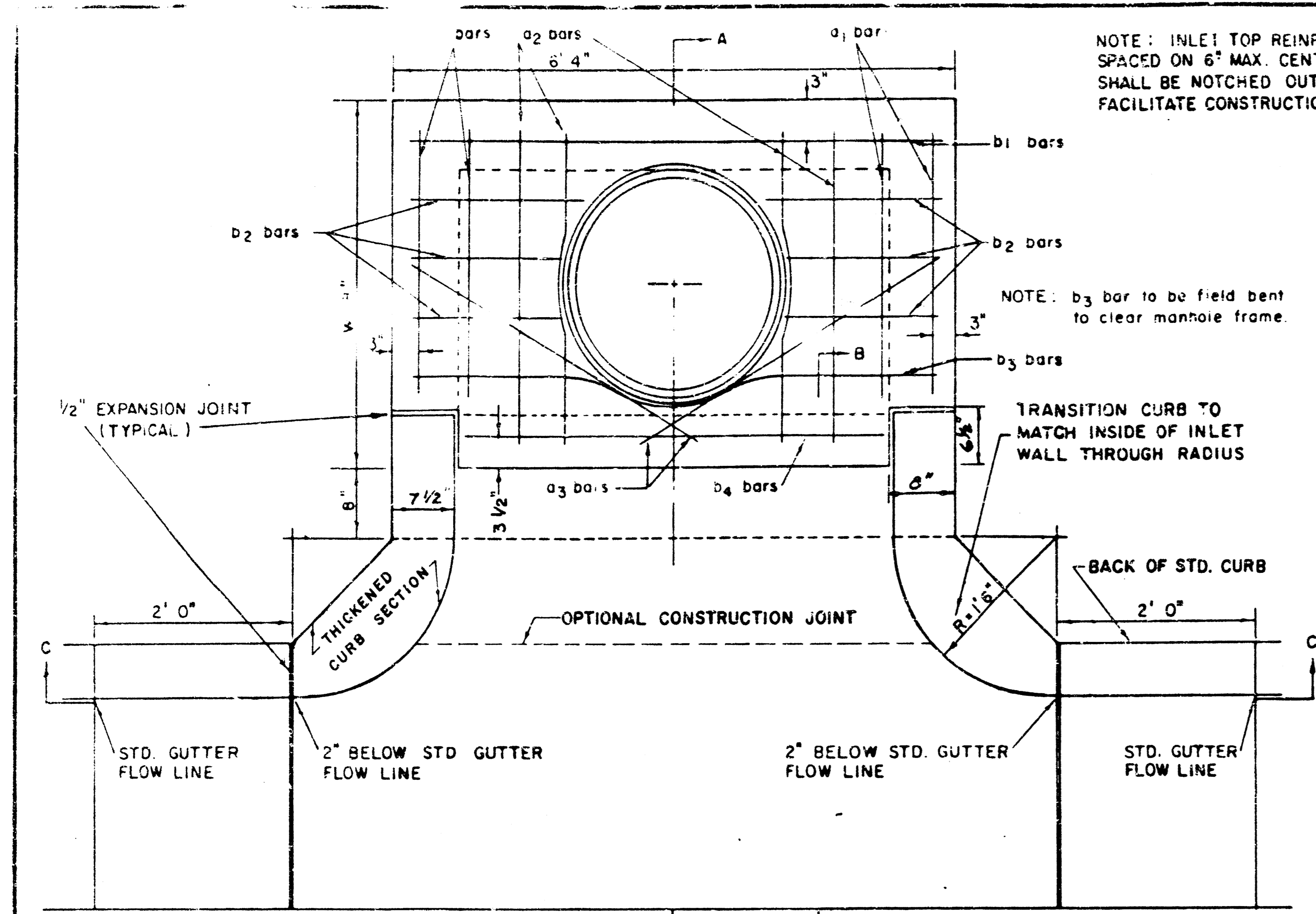
SLAB AND FLOOR REINFORCING											
Mark	Size	W=4'-4"		W=5'-4"		W=6'-4"		W=7'-4"		W=8'-4"	
		No	Length	No	Length	No	Length	No	Length	No	Length
a1	#4	13	0'-7 1/4"	13	8'-7 1/4"	13	10'-7 1/4"	13	12'-7 1/4"	13	14'-7 1/4"
a2	#4	2	0'-0"	2	8'-0"	2	10'-0"	2	12'-0"	2	14'-0"
a3	#4	20	4'-1"	20	5'-1"	20	6'-1"	20	7'-1"	20	8'-1"
b1	#4	1	0'-8"	1	0'-8"	1	0'-8"	1	0'-8"	1	0'-8"
#be	#4	18	11'-1"	24	11'-1"	30	11'-1"	36	11'-1"	42	11'-1"

WALL REINFORCING											
Mark	Size	W=4'-4"		W=5'-4"		W=6'-4"		W=7'-4"		W=8'-4"	
		No	Length	No	Length	No	Length	No	Length	No	Length
c1	#6	4	0'-1"	4	7'-1"	4	8'-1"	4	9'-1"	4	10'-1"
w1	#4	1	11'-1"	1	11'-1"	1	11'-1"	1	11'-1"	1	11'-1"
w2	#4	1	4'-1"	1	5'-1"	1	6'-1"	1	7'-1"	1	8'-1"
w3	#4	2	3	2	3	2	3	2	3	2	3

* Field bend or cut Reinforcing as required for clearance
 ① 4(HI-G) ② 4O+4(W-1) ③ HI-(0)

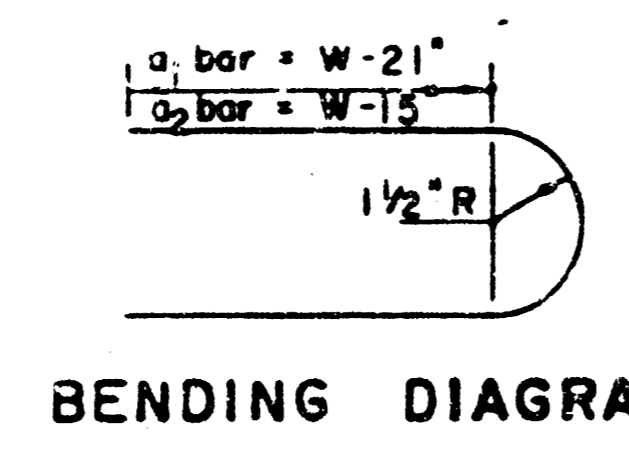


DETAIL STANDARD
 TYPE IA CURB INLET
 INLET OPENING = 6" x 10'-0"
 CITY OF WICHITA
 M. E. LINDEBAK, CITY ENGINEER
 OCTOBER 1984



NOTE: EXPANSION JOINT ONLY IN CURB AREA WITH CONC. PAVEMENT.

PLAN



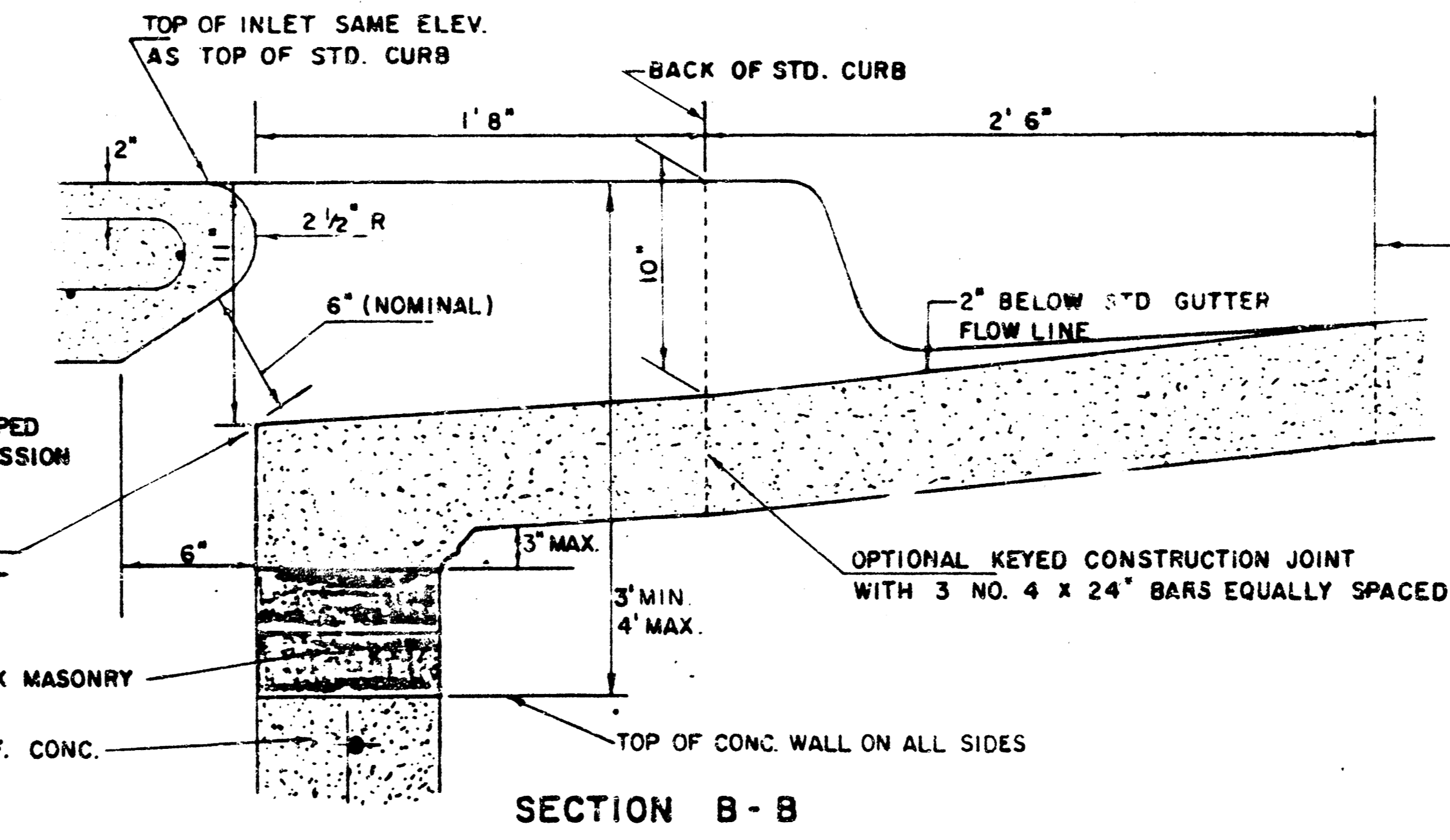
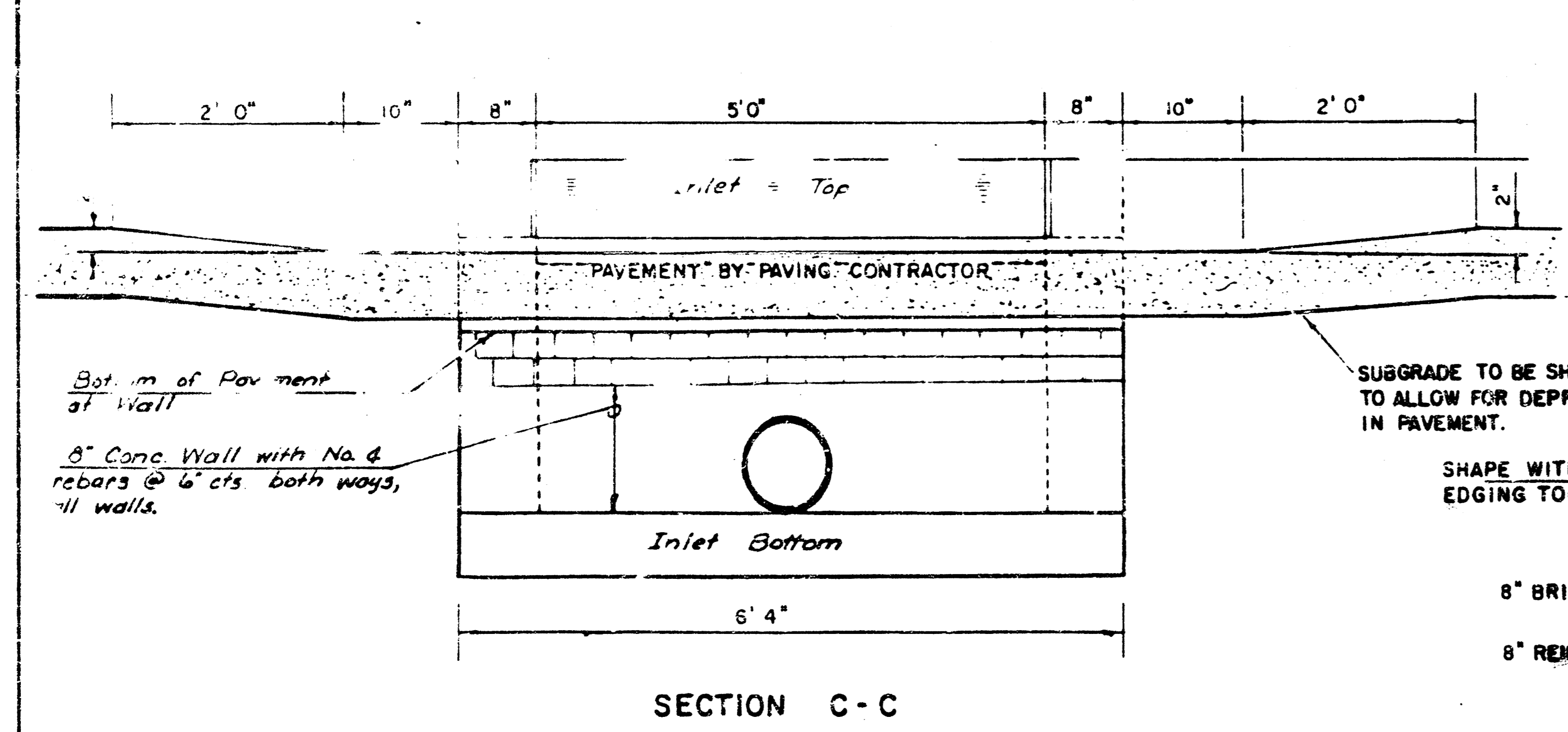
STEEL SCHEDULE

BAR NUMBER	a ₁	a ₂	a ₃	b ₁	b ₂	b ₃	b ₄	WT. LBS.
4	4	2	1	3	5	7	9	6
SIZE	#4	#4	#4	#4	#4	#4	#4	#6
LENGTH	W=4'4"	5'7"	6'7"	4'0"	6'1"	-	-	1'9"
	5'4"	7'7"	8'7"	5'0"	6'1"	-	-	1'9"
	6'4"	9'7"	10'	6'0"	6'1"	-	-	1'9"
	7'4"	11'7"	12'7"	7'0"	6'1"	-	-	1'9"
	8'4"	13'7"	14'7"	8'0"	6'1"	-	-	1'9"
								6'2"
								4'8"
								141±

STANDARD CURB INLET PRECAST TOPS

W	PRE-CAST TOP SIZE	PIPE SIZE	CU. YD. CONC.
4' 4"	5' 8" x 6' 4" x 7 1/2"	21" & SMALLER	0.38 ±
5' 4"	6' 8" x 6' 4" x 7 1/2"	24" & 30"	0.51 ±
6' 4"	5' 8" x 6' 4" x 7 1/2"	36" & 42"	0.64 ±
7' 4"	6' 8" x 6' 4" x 7 1/2"	48" & 54"	0.77 ±
8' 4"	7' 8" x 6' 4" x 7 1/2"	60" & 60"	0.90 ±

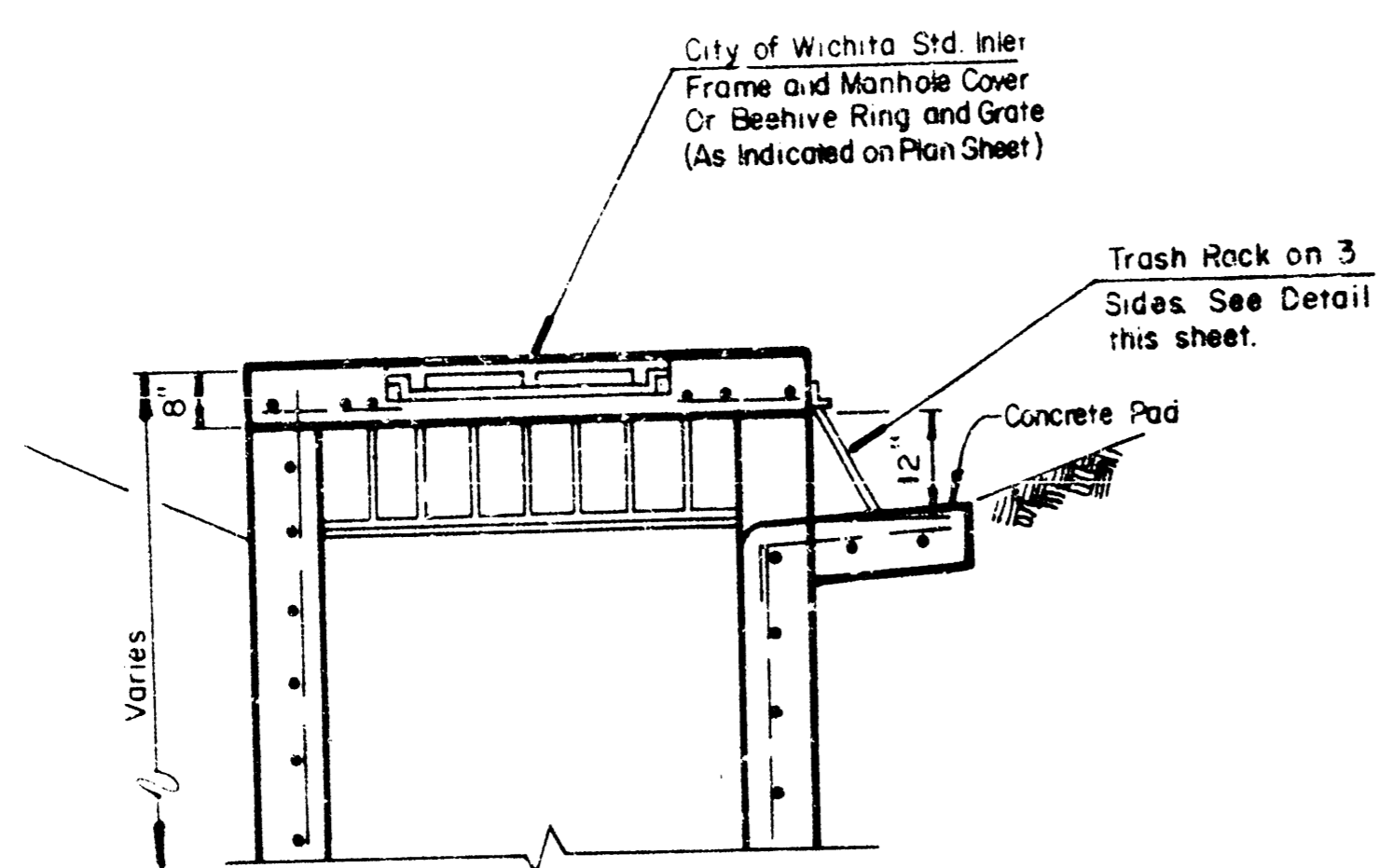
* NOTE: a₃ BARS TO BE PLACED APPROX. 2" BELOW TOP OF INLET COVER



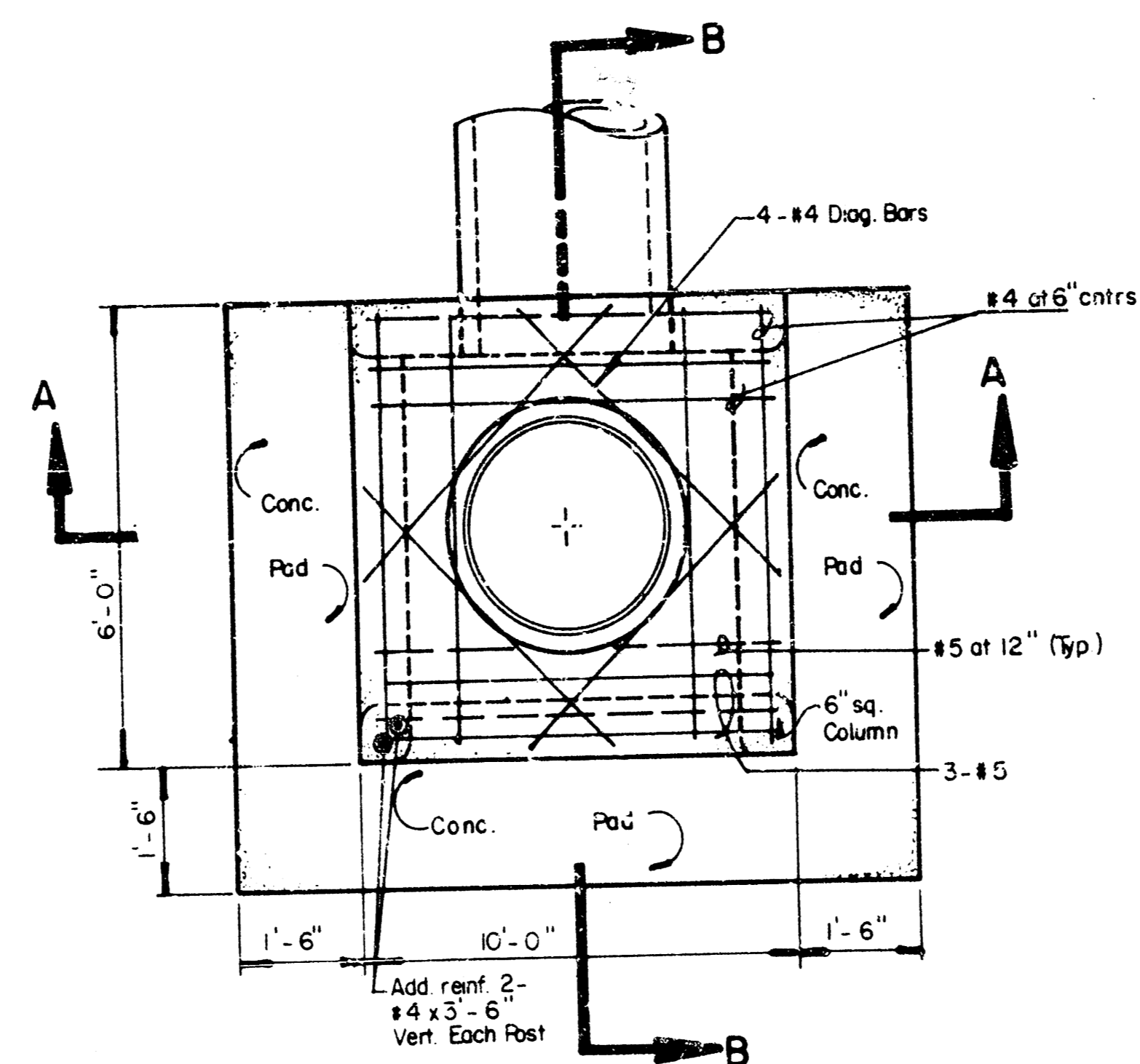
DETAIL STANDARD TYPE IA CURB INLET
 CITY OF WICHITA, KANSAS
 INLET OPENING = 6" x 5' 0"

JUNE 1984

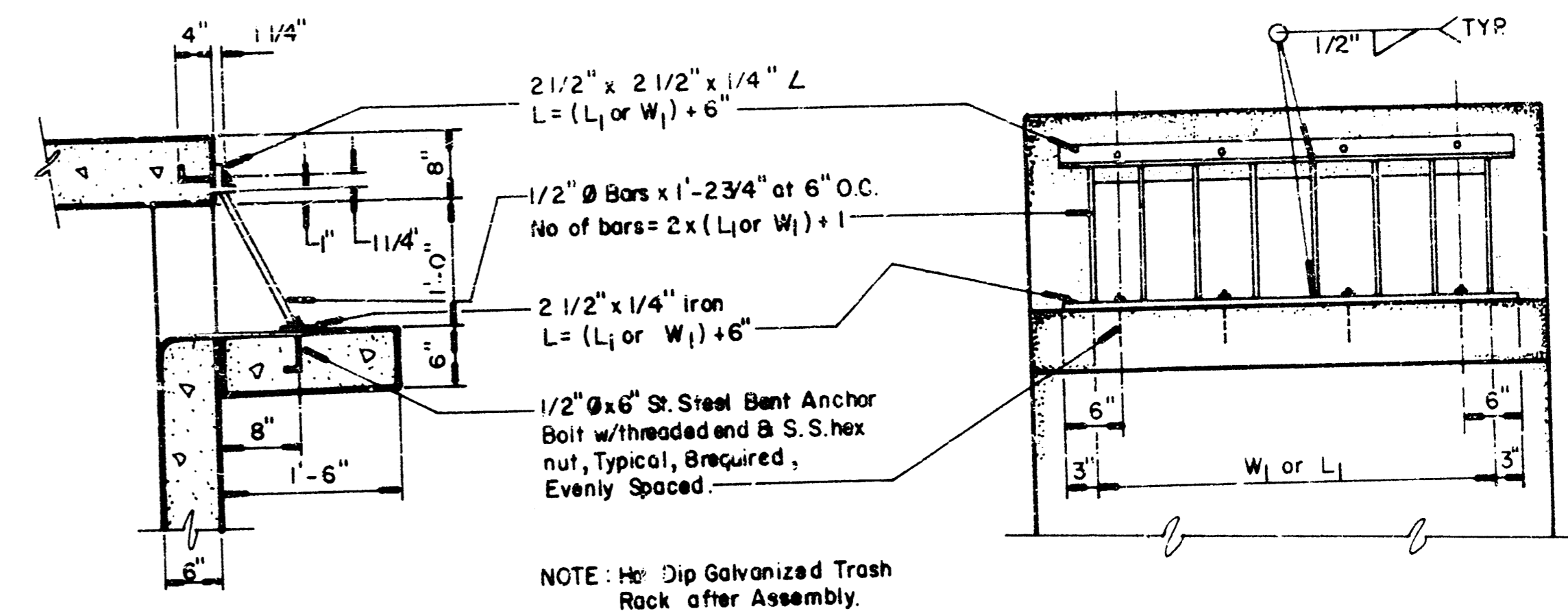
4/6



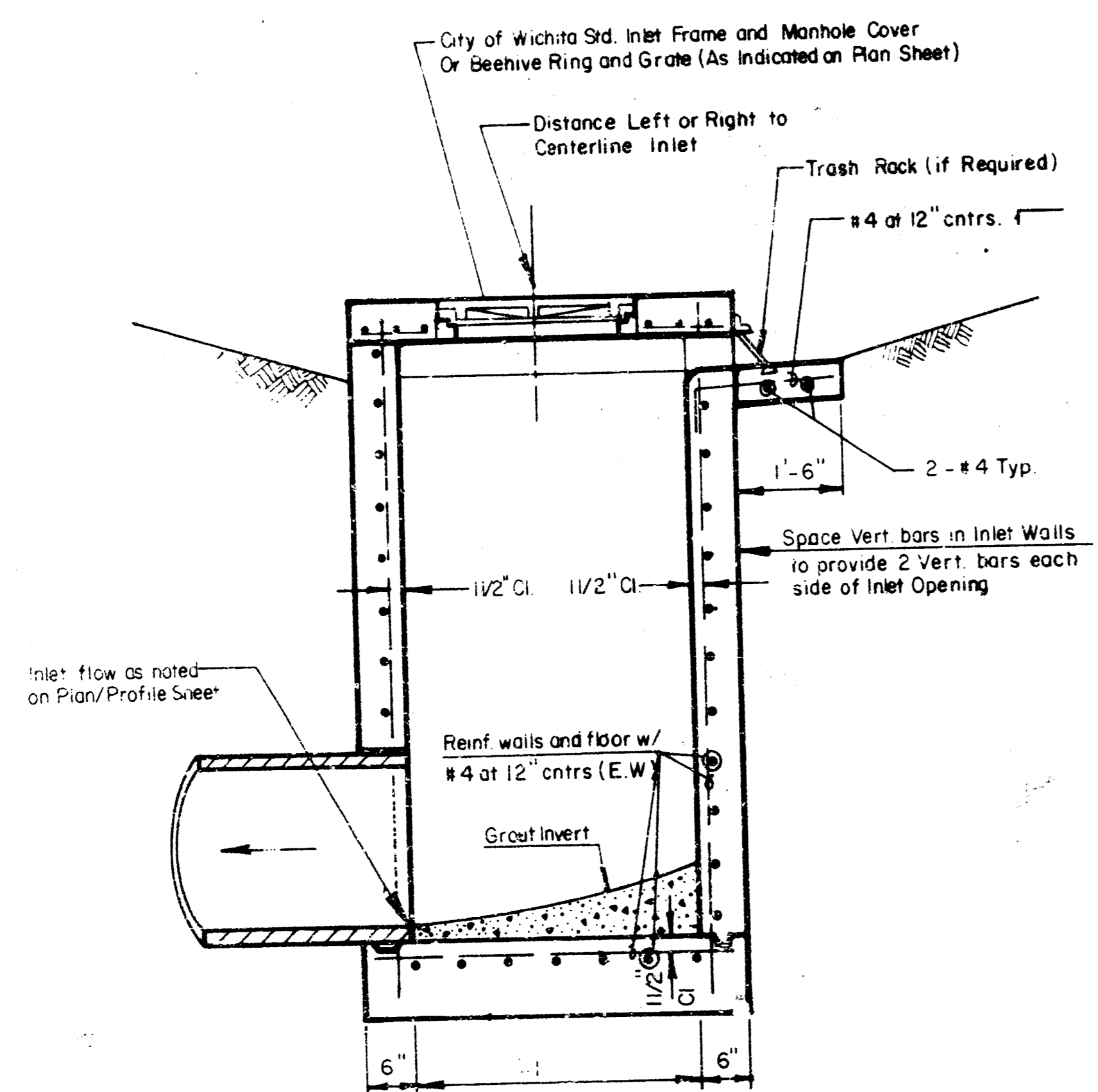
SECTION B-B
 DITCH INLET TYPE IA



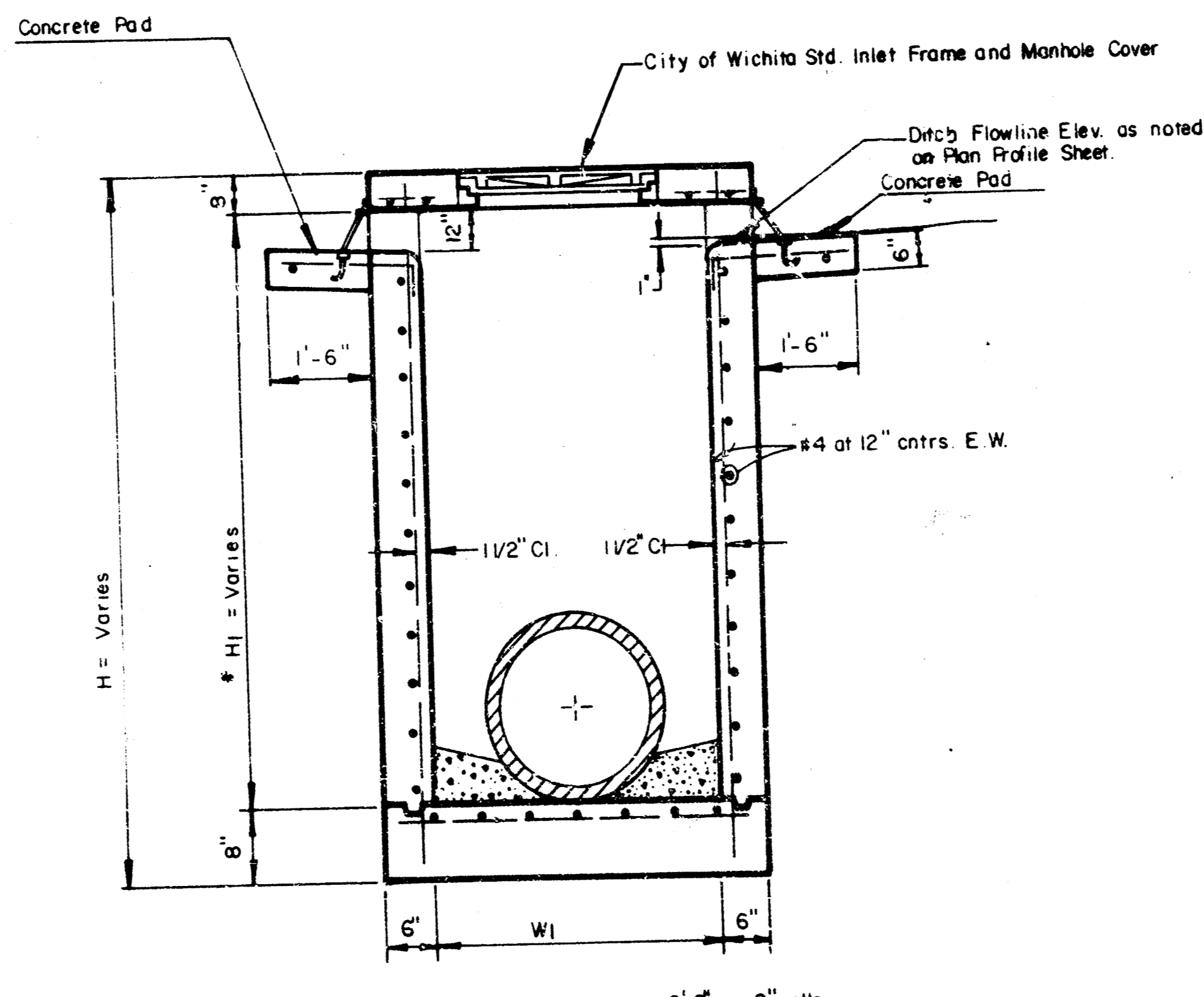
PLAN



TRASH RACK DETAIL
 FOR USE WITH TYPE I-A DITCH INLET



SECTION B-B



SECTION A-A

DITCH INLET TYPE I



WOODLAND ESTATES
 SECOND
 STD. DITCH INLET
 TYPE I / I-A

MID-KANSAS ENGINEERING CONSULTANTS PA
 3500 NORTH ROCK ROAD
 BUILDING #800
 WICHITA, KANSAS 67226

682-6561

Drawn by	
Checked by	
Date	FEB 1987
Sheet	5
of	6

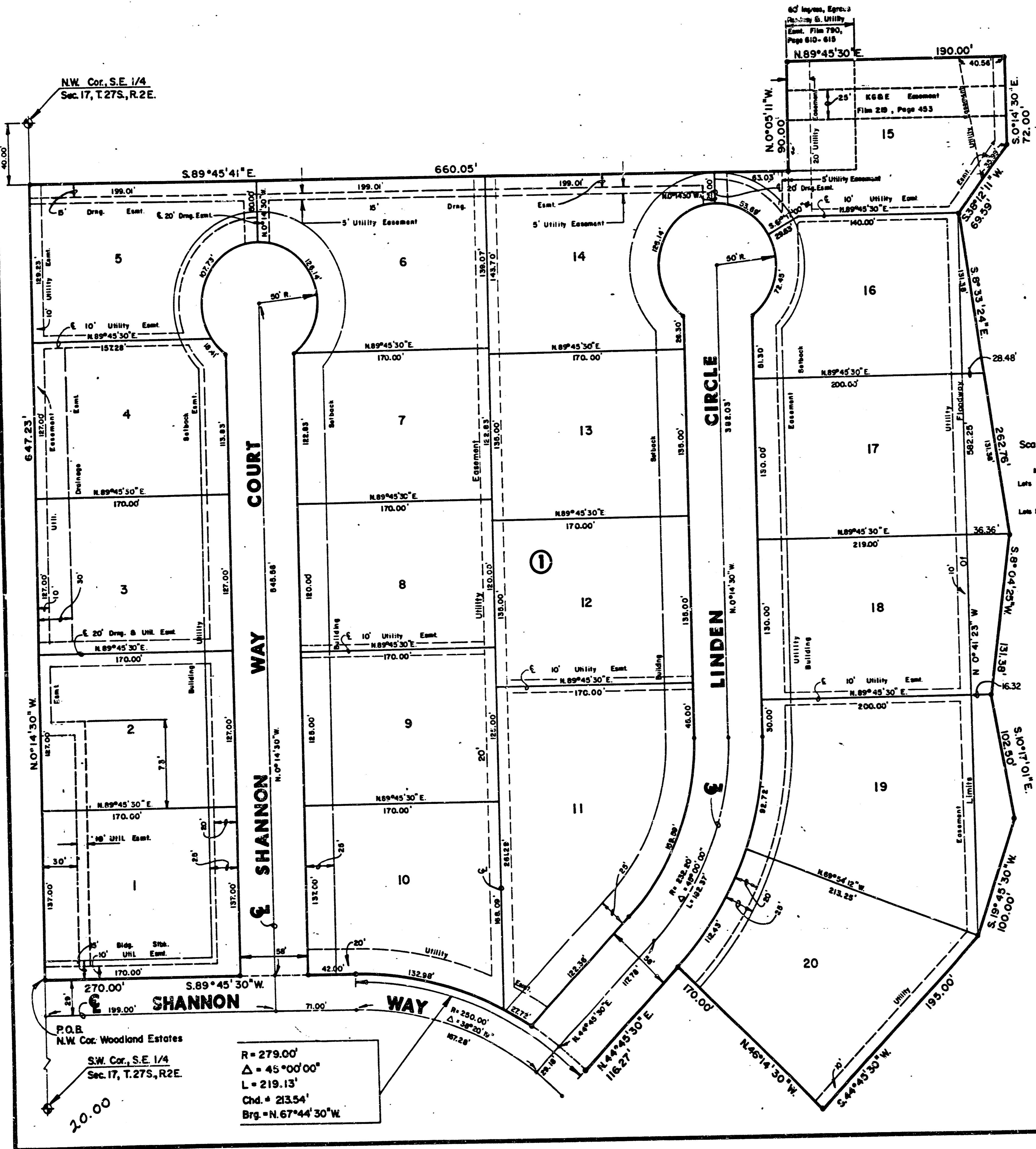
FILMED FROM THE BEST
 AVAILABLE COPY

62-9 T-29

C-1 5-29

FINAL PLAT OF WOODLAND ESTATES SECOND

AN ADDITION TO WICHITA, SEDGWICK COUNTY, KANSAS



I, Kenneth H. Bengtson, a Civil Engineer in Kansas, do hereby certify that I have been in responsible charge of surveying and platting of "WOODLAND ESTATES SECOND" an addition to Wichita, Sedgwick County, Kansas, into Lots, a Block, and Streets, the same being accurately set forth in the accompanying plat and described herein:

A tract of land lying in the Southeast Quarter of Section 17, Township 27 South, Range 2 East of the 6th P.M., more particularly described as follows:

Beginning at the Northwest Corner of Woodland Estates, an addition to Wichita, Sedgwick County, Kansas, said point lying 1967.09 feet from the Southwest corner of said Southeast Quarter on the west line of said Southeast Quarter; thence N 0° 14' 30" W, 647.23 feet along said west line to a point lying 40 feet south of the Northwest Corner of said Southeast Quarter; thence S 89° 45' 41" E, 660.05 feet; thence S 0° 14' 11" W, 90.00 feet; thence N 89° 45' 30" E, 190.00 feet; thence S 8° 33' 30" E, 72.00 feet; thence N 89° 45' 30" W, 100.00 feet; thence S 44° 01' E, 262.76 feet; thence S 8° 12' 11" W, 60.59 feet; thence S 8° 33' 30" E, 72.00 feet; thence S 19° 45' 30" W, 100.00 feet; thence S 44° 01' E, 102.50 feet; thence S 19° 45' 30" W, 100.00 feet; thence S 44° 45' 30" W, 195.00 feet; thence N 46° 14' 30" W, 170.00 feet; thence S 44° 45' 30" W, 116.27 feet to a point on the north line of said Woodland Estates, said point lying on a curve to the left; thence along said north line and said curve 219.13 feet, said curve having a central angle of 45° 00' 00", a radius of 279.00 feet, and a long chord 213.54 feet, bearing N 67° 44' 30" W; thence continuing along said north line S 89° 45' 30" W, 270.00 feet to the point of beginning.

I hereby certify that the details of this plat are correct to the best of my knowledge and belief this 29 day of October, 1986.

Kenneth H. Bengtson, P.E.
Mid-Kansas Engineering Consultants, P.A.
3500 N. Rock Road, Building #800



Know all men by these presents that we the undersigned property owners of the land as above set forth in the Civil Engineers Certificate, have caused the same to be surveyed and platted into lots, a block, and streets the same to be known as "WOODLAND ESTATES SECOND" an addition to Wichita, Sedgwick County, Kansas. The streets are hereby dedicated to and for the use of the public. Easements for the construction and maintenance of drainage and public utilities as indicated on the accompanying plat are hereby granted. Minimum pad elevation on Lots 15 through 20 inclusive, Block I shall be as indicated on the face of the plat.

LAKEPOINT COMPANY, a Kansas general partnership
by Ritchie Associates, Inc.,
managing partner of said partnership

By: *Jack D. Ritchie*
Jack D. Ritchie, President

STATE OF KANSAS
SEDGWICK COUNTY

Be it remembered that on this 29 day of October, 1986, before me a Notary Public in and For said State and County, came Ritchie Associates, Inc., by Jack D. Ritchie, President, to me personally known to be the same person who executed the foregoing instrument of writing and duly acknowledged the execution of the same. In testimony whereof I have hereunto set my hand and affixed my notarial seal the day and year above written.

Teresa A. Niles, Notary Public
By Appointment Expires: _____

This plat of "WOODLAND ESTATES SECOND" has been submitted to and approved by the Wichita-Sedgwick County Metropolitan Area Planning Commission, Wichita, Kansas.

Dated this 16 day of October, 1986.

WICHITA-SEDGWICK COUNTY METROPOLITAN AREA PLANNING COMMISSION

John Terry Moore, Chairman
Michael E. Lindbeck, Secretary

This plat approved and all dedications shown hereon, if any, accepted by the City Commission of the City of Wichita, Kansas, this 17 day of October, 1986.

Tony Casado, Mayor
Tony Casado

Donald C. Bistick, City Clerk
Donald C. Bistick

Entered on transfer record this 21 day of November, 1986.

Don Wright, County Clerk
Don Wright

STATE OF KANSAS
SEDGWICK COUNTY

This is to certify that this instrument was filed for record in the Register of Deeds office this 21 day of November, 1986, AT 10:30 A.M.

Pat Lettner, Register of Deeds
Pat Lettner

Ed Mesa, Deputy
Ed Mesa

Restrictive Covenant F.847 P.490
Restrictive Covenant F.847 P.492

WOODLAND ESTATES SECOND
STORM WATER SEWER NO. 324
PROJ. NO. 468-76-245-8638-000-000

C-1 5-29

FILMED FROM THE BEST AVAILABLE COPY