

STORM WATER SEWER #369

TO SERVE JIM FISHER ADDITION

INDEX NO. 606764

Project No.

468-76-245-81863-000-000-001

CITY OF WICHITA, KANSAS

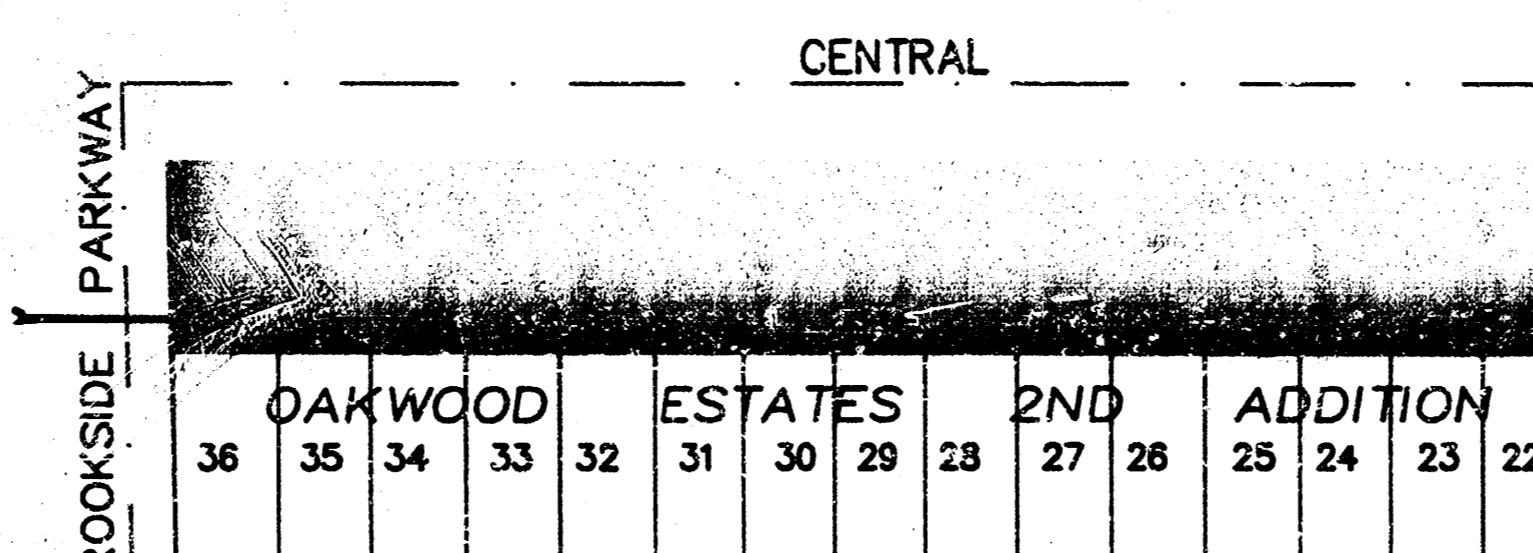
Michael E. Lindebak City Engineer

GENERAL NOTES

- One lane traffic shall be maintained through construction on Brookside Parkway at all times. See traffic control note, Sheet 2.
- Underground utility service lines and overhead utility pole lines are to be adjusted as necessary by others prior to construction unless the plans specifically call for their adjustment by the Contractor or unless the plans specifically identify a utility to be adjusted by its owner during construction. Existing utilities and their location, as shown on the plans, represent the best information obtainable for design. Location information has been obtained from the various utility companies and is either from company record drawings or company provided field locations. The Contractor will be required to work around existing utilities within the right-of-way which do not conflict with proposed construction.
- Rubble from the removal of miscellaneous structures and excess excavation which is to be wasted shall be disposed of on sites to be provided by the Contractor. These sites shall be approved by the Engineer as to suitability, appearance and site location. Locations that, in the opinion of the Engineer, will leave an unsightly appearance will not be approved.
- Trees and shrubs in public right-of-way which are in direct conflict with proposed new construction shall be removed by the Contractor with the Engineer's approval. Trees and shrubs which are not in direct conflict with proposed new construction shall be saved and protected from damage.
- The Contractor shall give all property owners and/or tenants of developed property directly abutting the construction of this project a minimum of ten (10) days advance notice prior to start of construction.
- The Contractor shall be responsible for preserving property irons. The Contractor will be required to re-establish any property irons which are damaged or destroyed by his construction operations. Such irons shall be re-established by a licensed land surveyor in accordance with state law.
- Pavement removal and/or replacement will be measured and paid for on the lineal foot basis as measured along the centerline of the sewer regardless of width, pavement type and/or pavement thickness. Minimum limits of such pavement removal and replacement shall be one foot beyond the limits of the excavation made for the sewer or the structure, except when such lines of removal are within three (3) feet of an existing joint the limits of removal shall be extended to the existing joint. Removal and replacement of existing pavement shall conform to the applicable sections of the City of Wichita Standard Specifications.
- Removal of trees, concrete walks, and removal and replacement of fence shall be part of the Lump Sum bid for clearing R/W and site preparation, and shall not be paid separately.

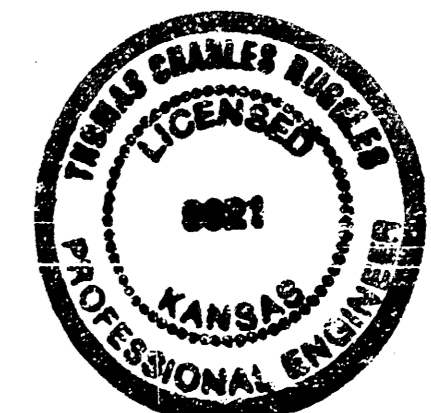
INDEX

- Title and Improvement District
- Plan and Profile
- Drop Inlet Detail



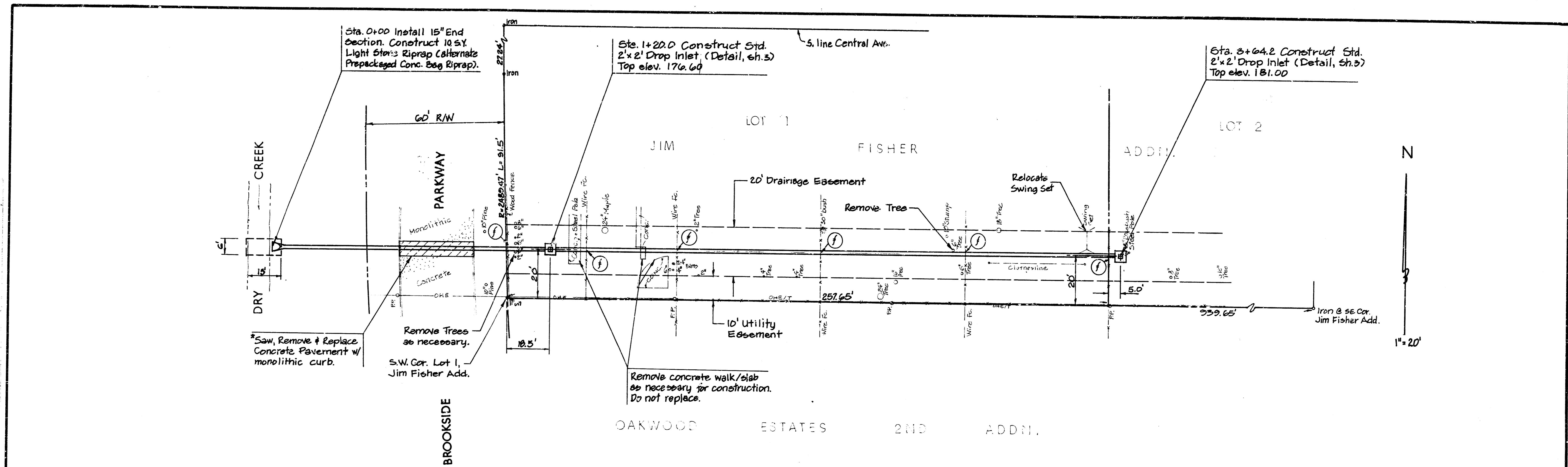
IMPROVEMENT DISTRICT

BOOKED
3/15/89
MG
(As BUILTS)



15 DEC 88

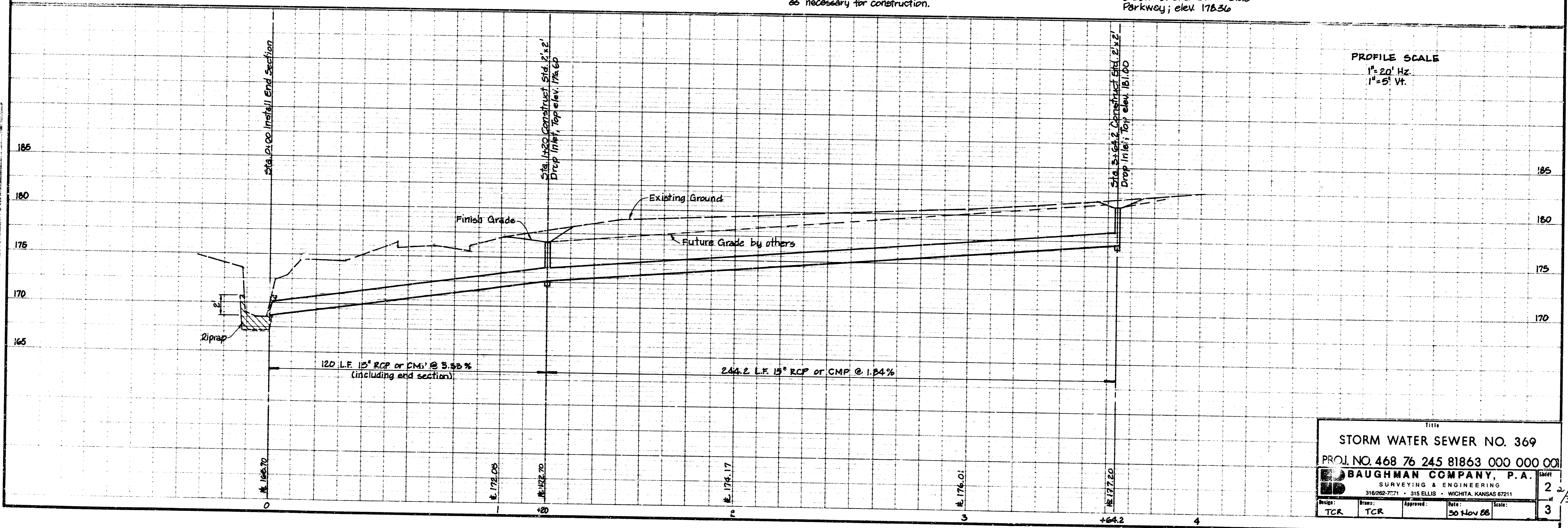
BAUGHMAN COMPANY P. A.
SURVEYING & ENGINEERING
316/262-7271 • 315 ELLIS • WICHITA, KANSAS 67211



*Note: Contractor shall submit traffic control plan to Traffic Engineering; plan must be approved 2 weeks prior to any interruption of traffic.

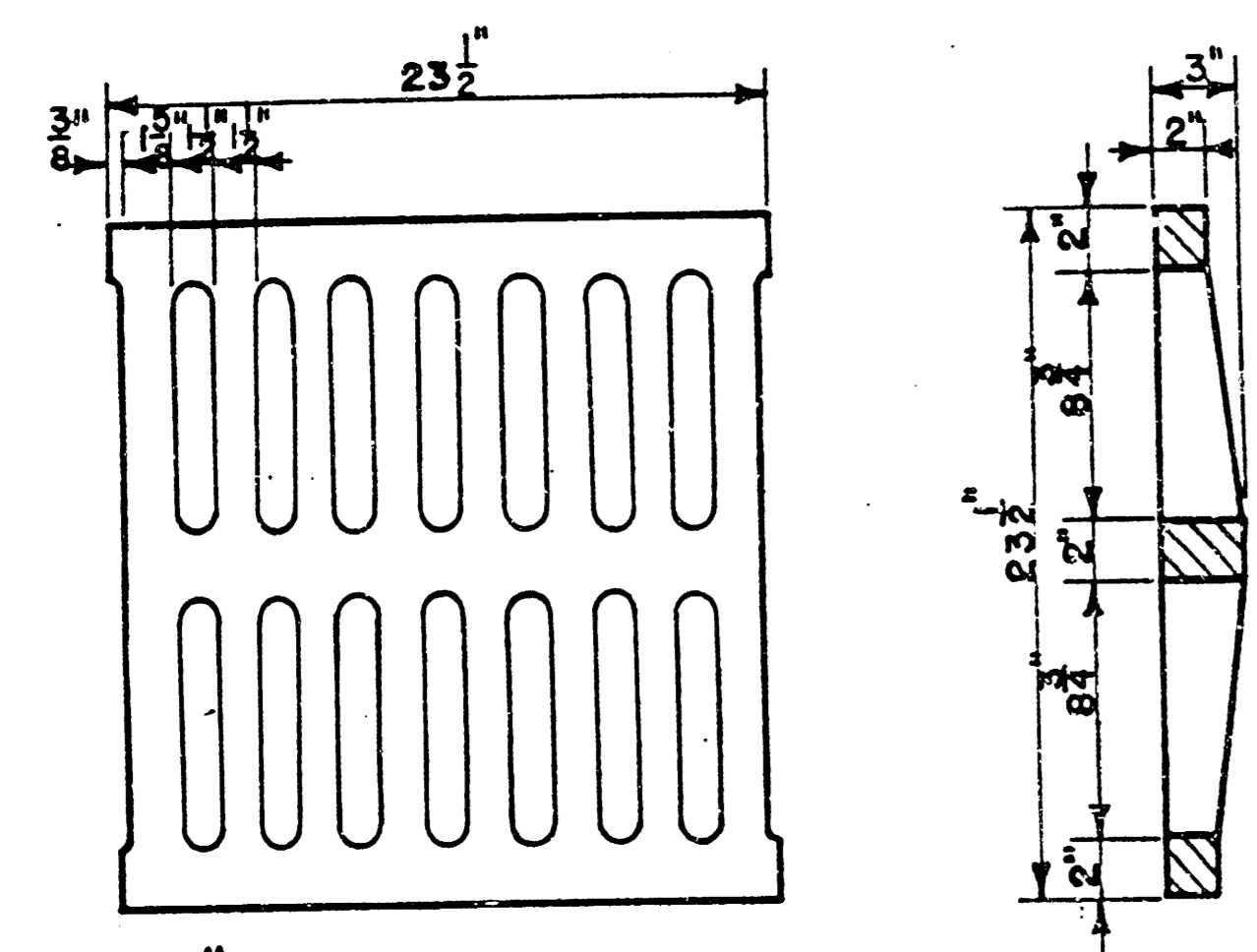
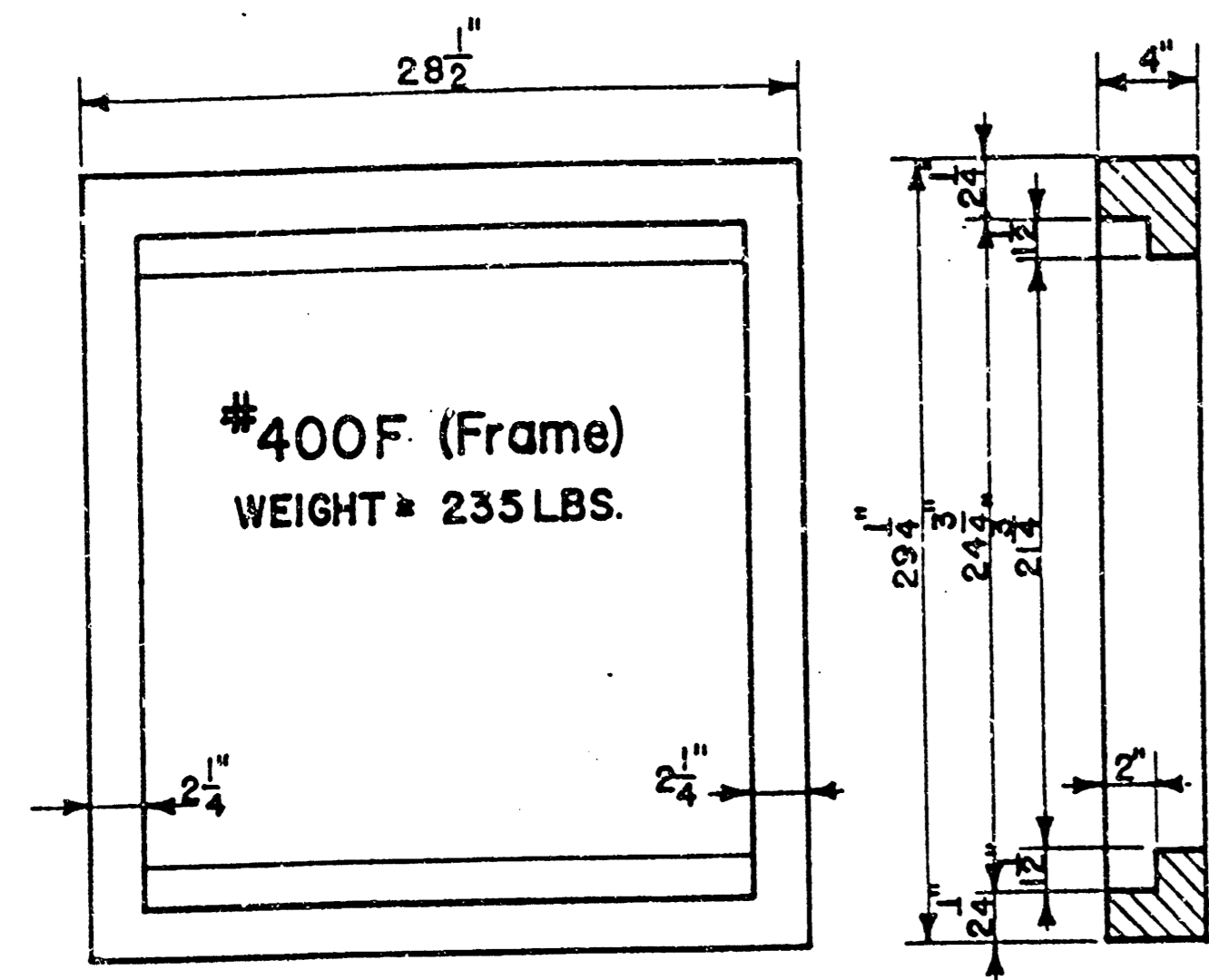
(f) Remove and Replace Fence as necessary for construction.

BENCH MARK:
 "+" cut on SE cor. bridge @ Central and Brookside Parkway; elev. 178.36



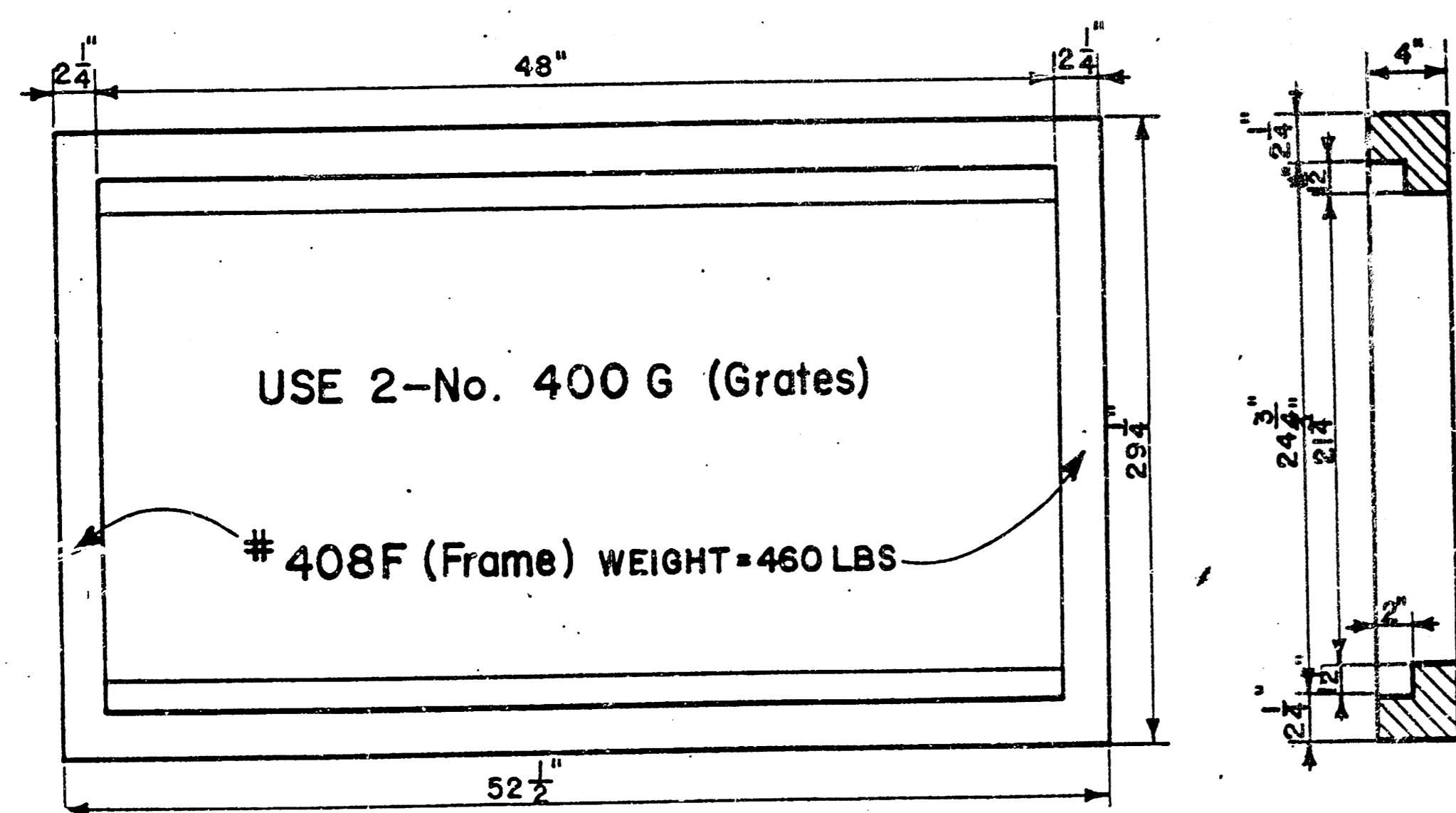
Title			
STORM WATER SEWER NO. 369			
PROJ. NO. 468 76 245 81863 000 000 001			
BAUGHMAN COMPANY, P.A.			
SURVEYING & ENGINEERING			
316-262-7771 • 315 ELLIS • WICHITA, KANSAS 67211			
Design:	Drawn:	Approved:	Date: 30 Nov 06
TCR	TCR		
Sheet			2
of			3

NOTE: Grates shall be imprinted on the top surface with "CITY OF WICHITA" using letters at least 1" in height. Other marking methods may be used only if approved by the engineer.

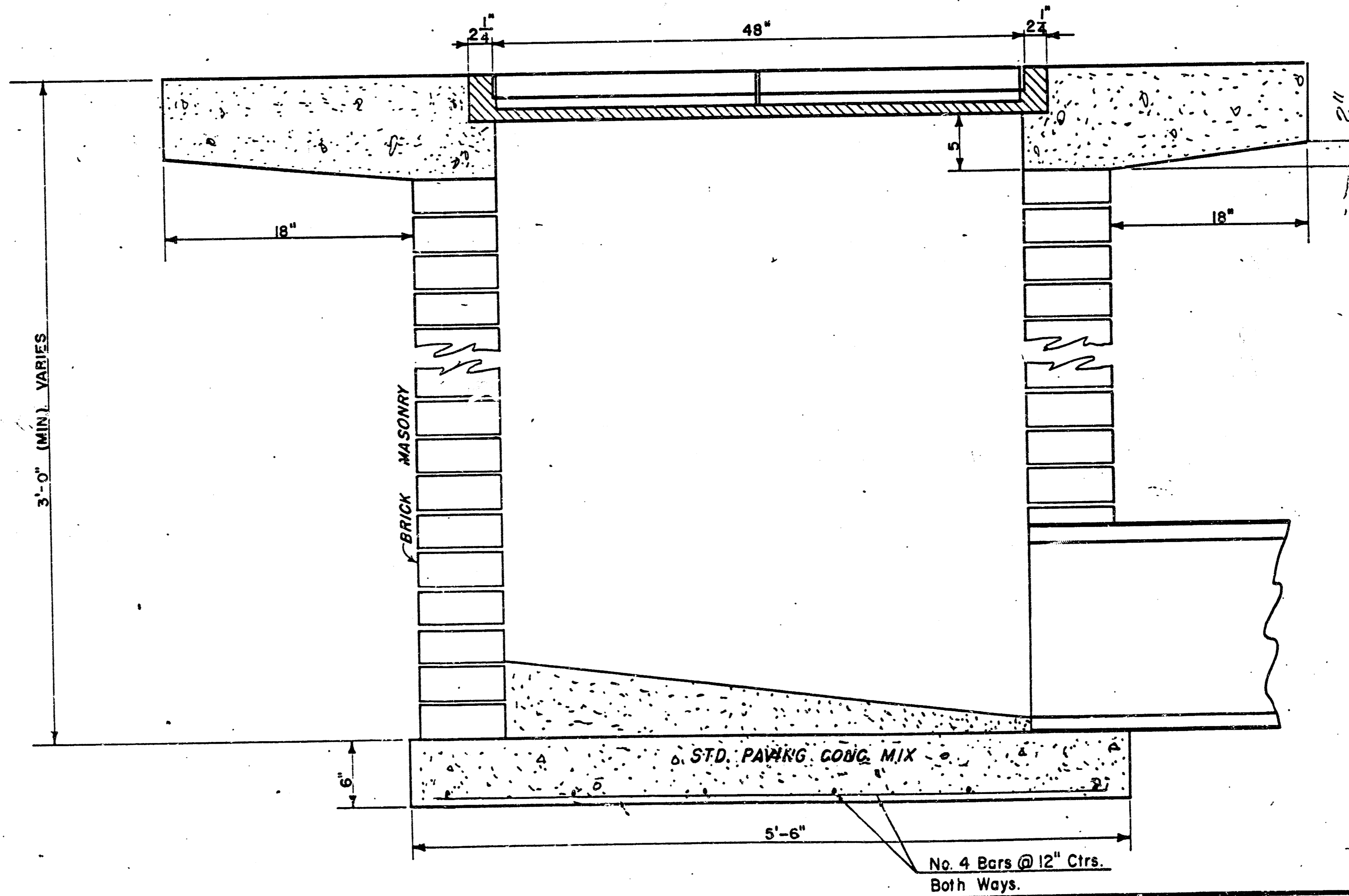
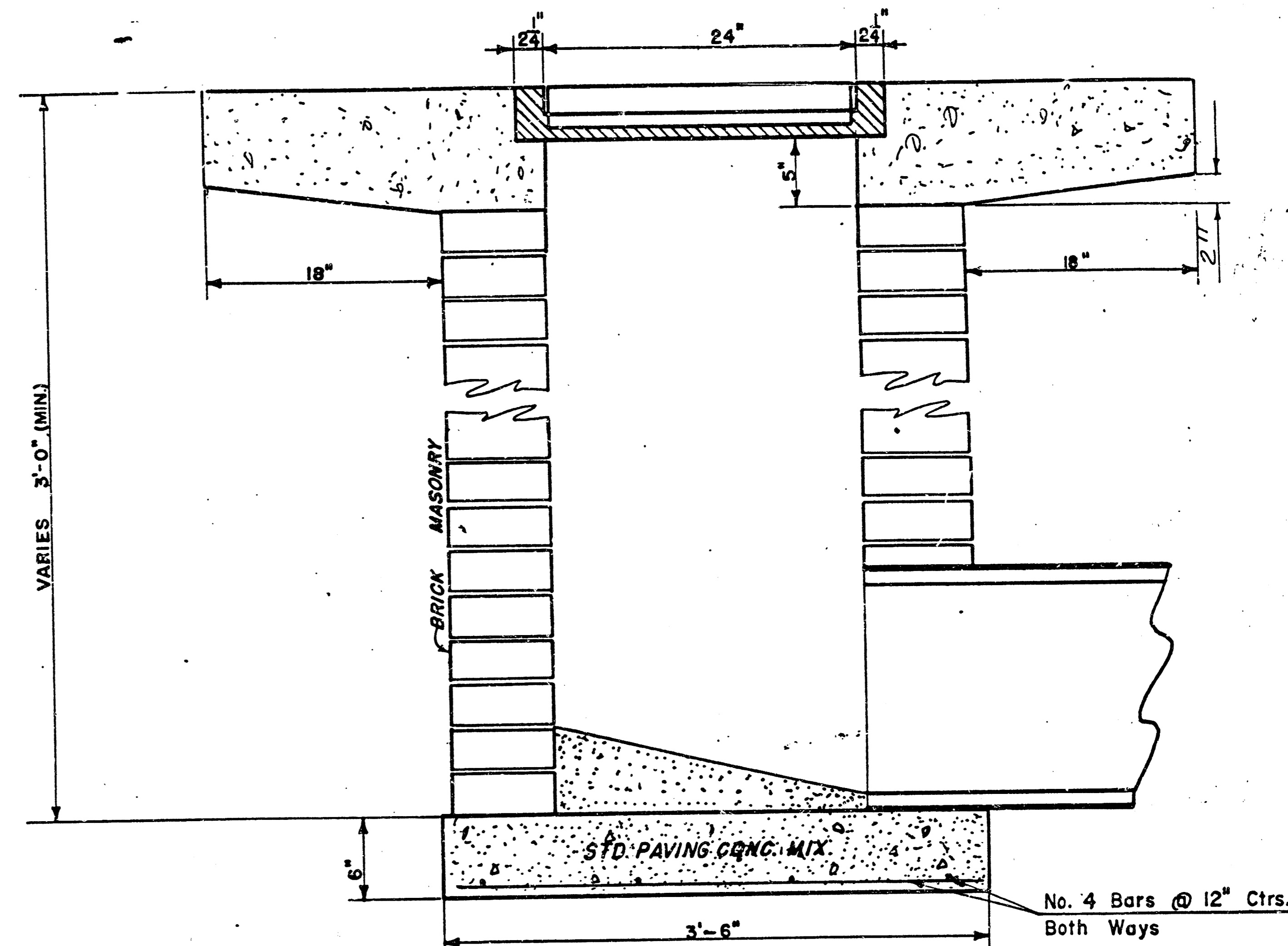
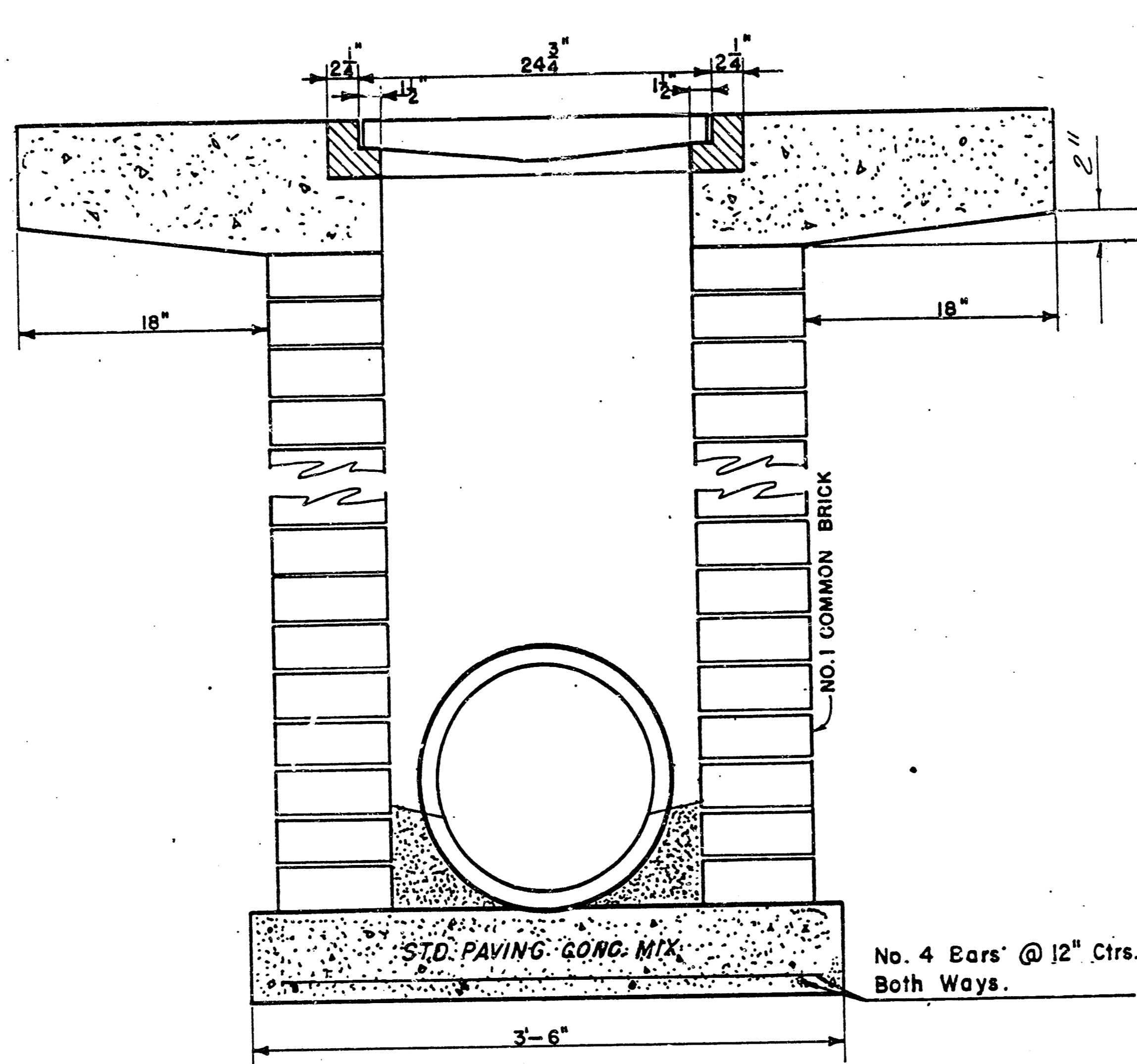


400G (Grate)
WEIGHT = 235 LBS

24"x24" Frame & Grate Detail



Double 24"x24" Frame Detail



DROP INLET DETAILS

M.E. Lindebak, City Engineer
City of Wichita, Kansas
Project
Project No. 472-76-245-

3/3
Sheet
3
of
3