

# STORM SEWER PLANS FOR LEEWOOD VILLAGE AT NORTHROCK

PHASE 1

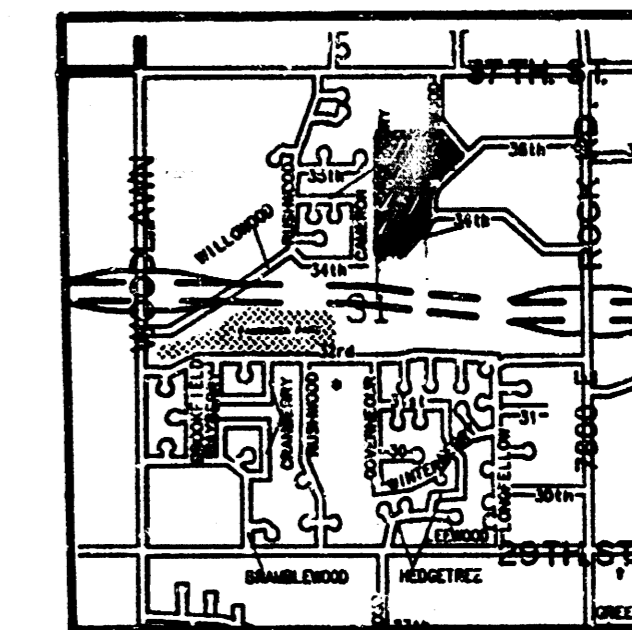
## STORM WATER SEWER #430

PROJECT NO. 468-82197

CITY OF WICHITA, KANSAS

MICHAEL E. LINDEBAK, CITY ENGINEER

INDEX NO. 750331



LOCATION MAP

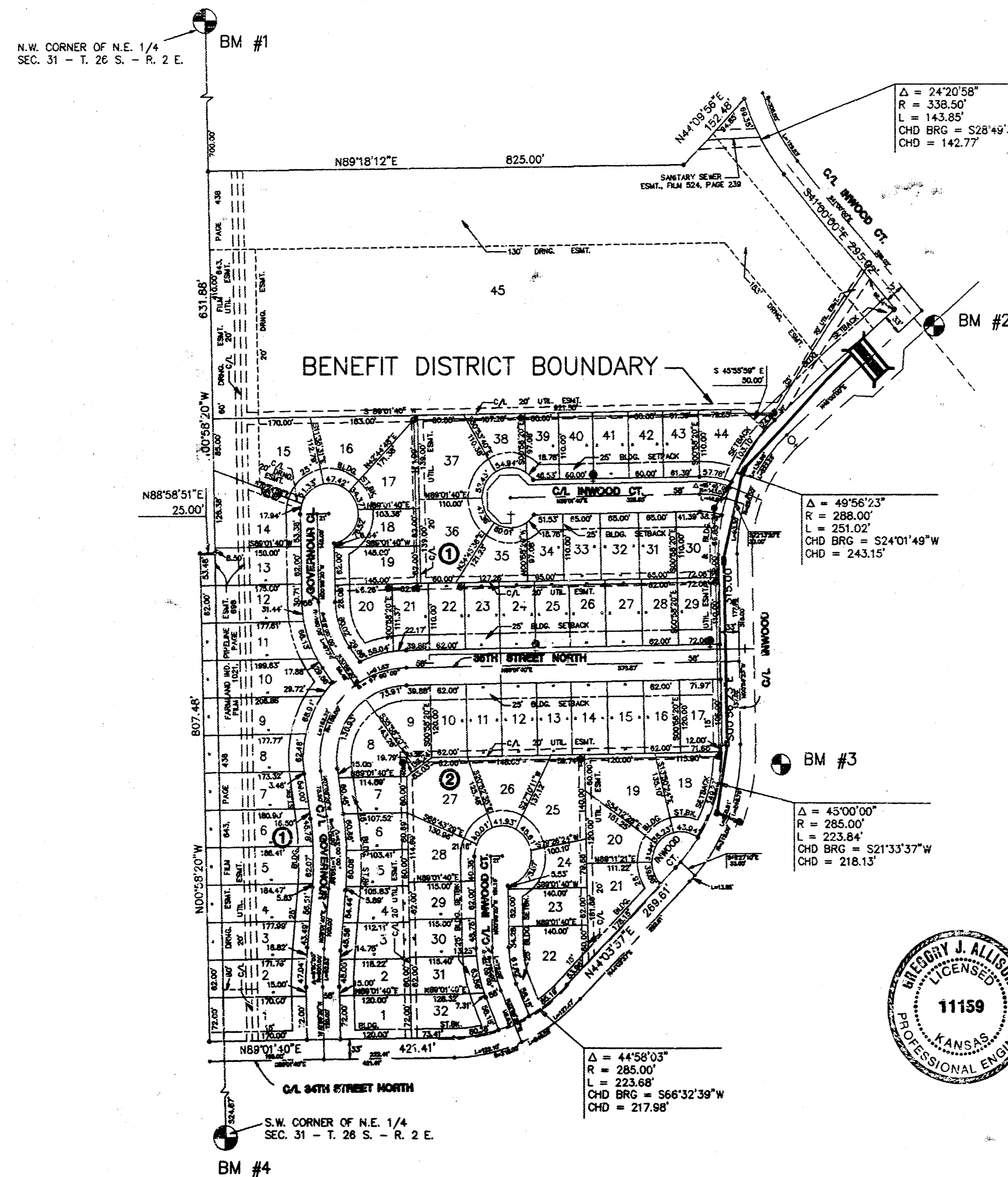
### GENERAL NOTES

- THE TOPS OF INLETS AND MANHOLES AS NOTED ON THE PLANS MAY VARY SO AS TO MEET PROPOSED TOP OF CURB ELEVATIONS OR PAVEMENT ELEVATIONS. THE FIELD ENGINEER SHALL LOCATE INLETS AND MANHOLES WITH REFERENCE TO PROPOSED PAVING PLANS OF THE PERTINENT STREETS.
- ALL CONCRETE SHALL BE STANDARD PAVING MIX UNLESS OTHERWISE NOTED.
- THE CONTRACTOR SHALL BE RESPONSIBLE FOR PRESERVING PROPERTY IRONS. THE CONTRACTOR SHALL BE REQUIRED TO RE-ESTABLISH ANY PROPERTY IRONS WHICH ARE DAMAGED OR DESTROYED BY HIS CONSTRUCTION OPERATIONS. SUCH IRONS SHALL BE RE-ESTABLISHED BY A LICENSED LAND SURVEYOR IN ACCORDANCE WITH STATE LAWS.
- TREES TO BE REMOVED ARE MARKED . ALL TREES WHICH IN THE OPINION OF THE FIELD ENGINEER CAN BE SAVED, SHALL BE SAVED.
- CONTRACTOR SHALL NOTIFY UTILITY COMPANIES OF CONSTRUCTION SCHEDULING.
- EXISTING UTILITIES AND THEIR LOCATIONS, AS SHOWN ON THE PLANS REPRESENT THE BEST INFORMATION OBTAINABLE FOR DESIGN. LOCATION INFORMATION HAS BEEN OBTAINED FROM THE VARIOUS COMPANIES AND IS EITHER FROM COMPANY UTILITY DRAWINGS OR COMPANY PROVIDED FIELD LOCATIONS. THE PLAN LOCATIONS SHOWN ARE NOT GUARANTEED. ADDITIONAL EXISTING UTILITIES MAY ALSO BE ENCOUNTERED.
- CONTRACTOR WILL BE REQUIRED TO PROVIDE A MINIMUM ADVANCE NOTICE OF FORTY-EIGHT (48) HOURS TO UTILITY COMPANIES PRIOR TO STARTING ANY EXCAVATION AS FOLLOWS:  

KANSAS ONE-CALL	1-800-344-7233
	OR 687-2470 (LOCAL WICHITA)

THE CONTRACTOR MUST NOTIFY THE FOLLOWING IN CASE OF AN EMERGENCY:

SOUTHWESTERN BELL TELEPHONE COMPANY	1-571-2115
CABLEVISION	262-4270 OR 263-2061
KPL GAS SERVICE COMPANY	263-7511
KANSAS GAS & ELECTRIC	264-1141
CITY OF WICHITA WATER DEPARTMENT	268-4908
ARKLA GAS COMPANY	942-8350 OR 263-8161
CITY OF WICHITA SEWER MAINTENANCE	268-4071
- RUBBLE FROM THE REMOVAL OF MISCELLANEOUS STRUCTURES AND EXCESS EXCAVATION WHICH IS TO BE WASTED SHALL BE DISPOSED OF ON SITES TO BE PROVIDED BY THE CONTRACTOR. THESE SITES SHALL BE APPROVED BY THE ENGINEER AS TO SUITABILITY, APPEARANCE AND SITE LOCATION. LOCATIONS THAT, IN THE OPINION OF THE ENGINEER, WILL LEAVE AN UNSIGHTLY APPEARANCE WILL NOT BE APPROVED. ALL DISPOSAL SITES MUST BE APPROVED BY THE KANSAS DEPARTMENT OF HEALTH AND ENVIRONMENT. MATERIAL EITHER STOCKPILED OR DISPOSED OF IN A FLOOD PLAIN WOULD REQUIRE A KANSAS STATE BOARD OF AGRICULTURE PERMIT. ANY MATERIAL DUMPED IN WATERS OF THE UNITED STATES OR WETLANDS IS SUBJECT TO U.S. CORPS OF ENGINEERS PERMITTING REGULATIONS. ANY MATERIAL BURIED OR STOCKPILED BEYOND APPROVED CONSTRUCTION LIMITS WOULD REQUIRE ADDITIONAL ARCHAEOLOGICAL INVESTIGATIONS UNLESS BURIED IN A PREVIOUSLY APPROVED BORROW LOCATION.



### INDEX TO DRAWINGS

SHEET NO.	DESCRIPTION
1	TITLE SHEET
2-3	LINE 1
4-5	INLET DETAILS
6	FINAL PLAT

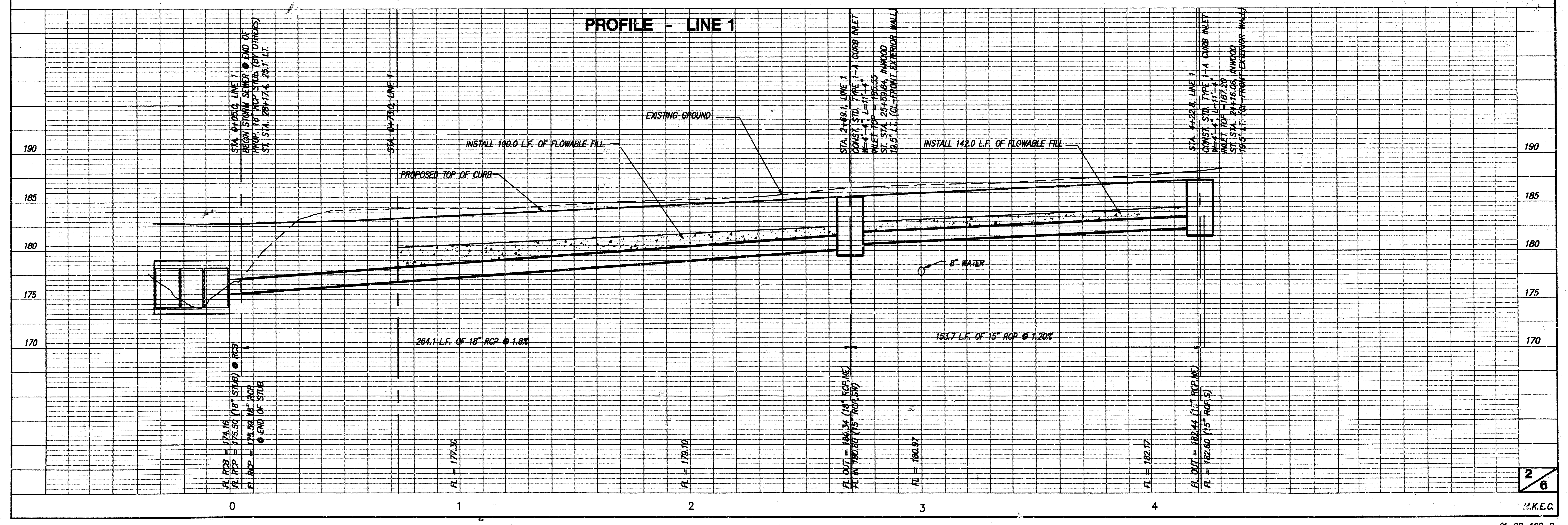
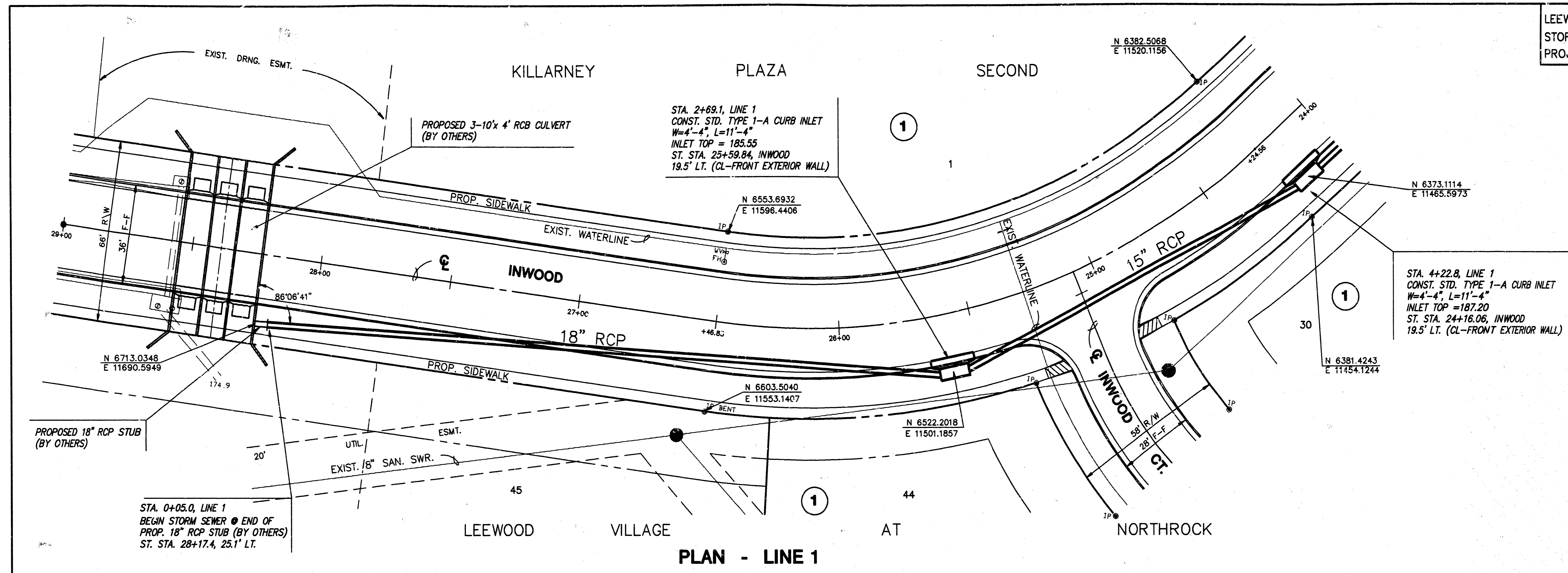
### BENCHMARKS

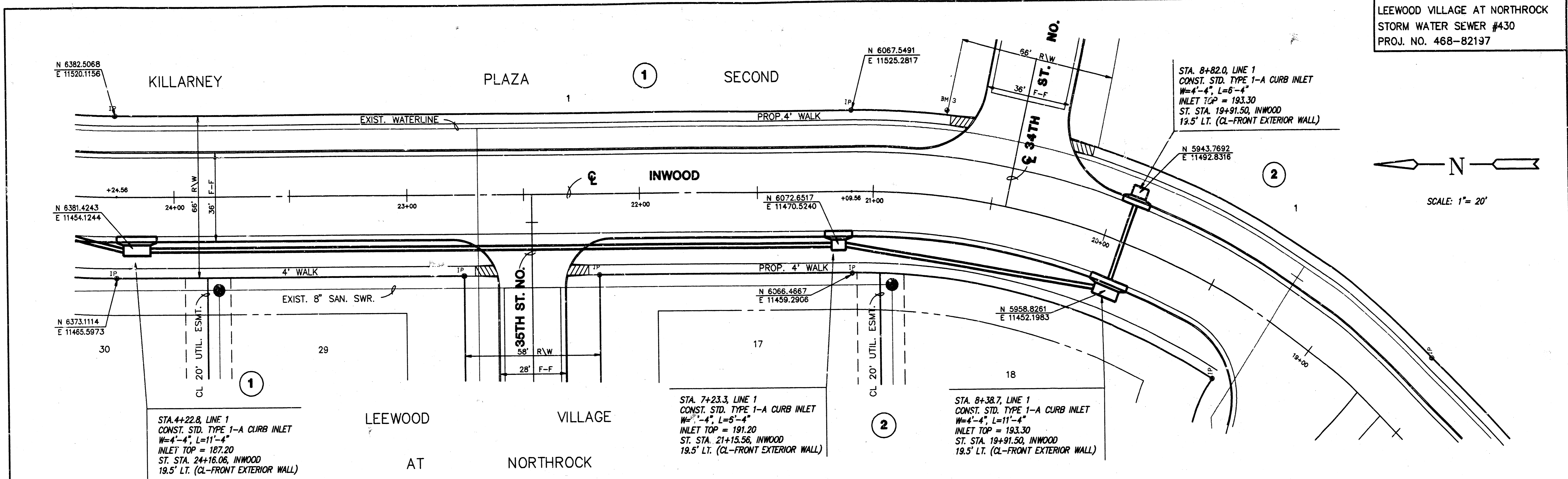
- BM #1 CITY DISC 30' N. & 34' W. OF 1/4 COR. 37TH ST. N. & GOVERNOUR. ELEV. = 185.54
- BM #2 "T" CUT ON T.C. AT WEST END OF N.W. RETURN 36TH ST. N. & INWOOD. ELEV. = 183.53
- BM #3 TOP OF "T" POST 2' E. OF S.W.COR. LOT 1, BLK.1 KILLARNEY PLAZA 2ND. ELEV. = 192.00
- BM #4 CONC. NAIL DRIVEN ON N. EDGE OF MH 72' E. OF CTR. SECTION 31-T26S-2E. ELEV. = 194.16

*Booked  
8/92  
mcs*

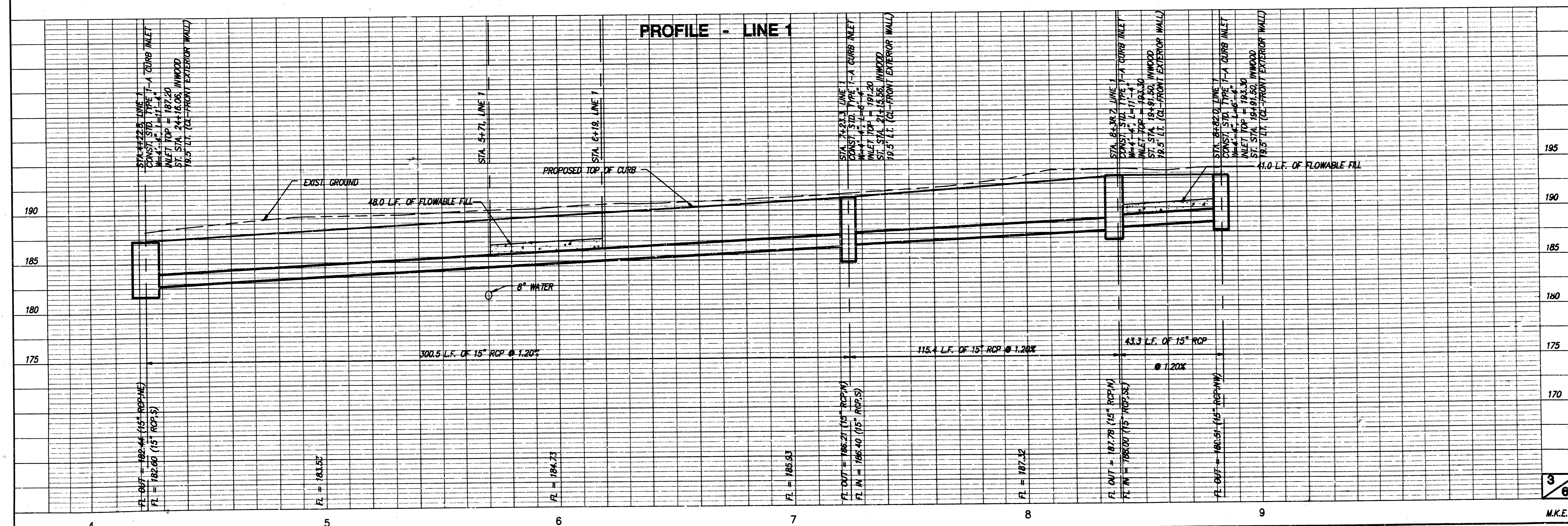
	<b>LEEWOOD VILLAGE AT NORTHROCK</b>	Design G.J.A. Drawn by K.K.L. Checked by G.J.A.
	<b>STORM SEWER PLANS PHASE 1</b>	Date 4/92 Job no. 9192SWS1
MID-KANSAS ENGINEERING CONSULTANTS INC. 3500 NORTH ROCK ROAD BUILDING #800 WICHITA, KANSAS 67226		Sheet 1 of 6

(316) 636-5566

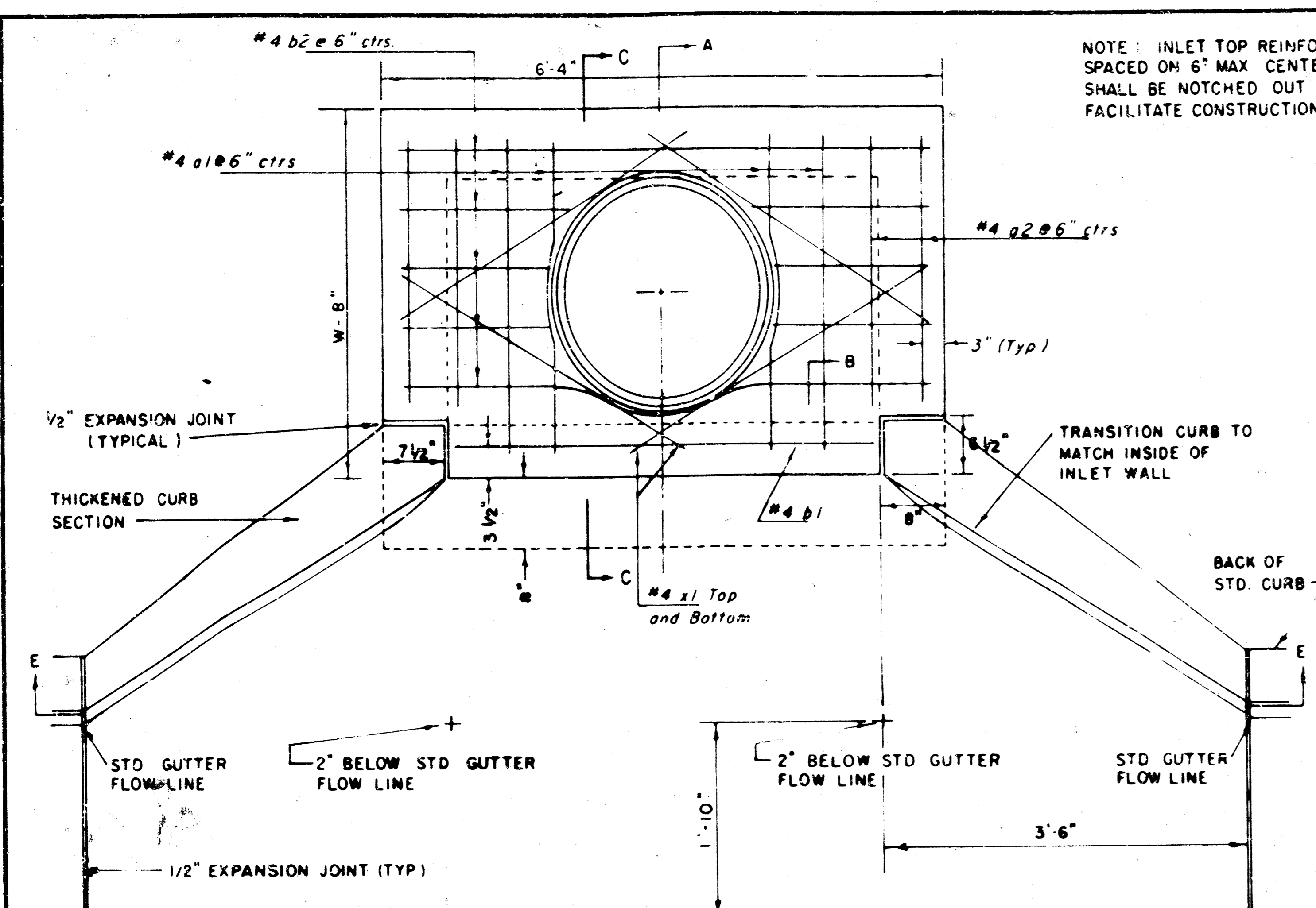




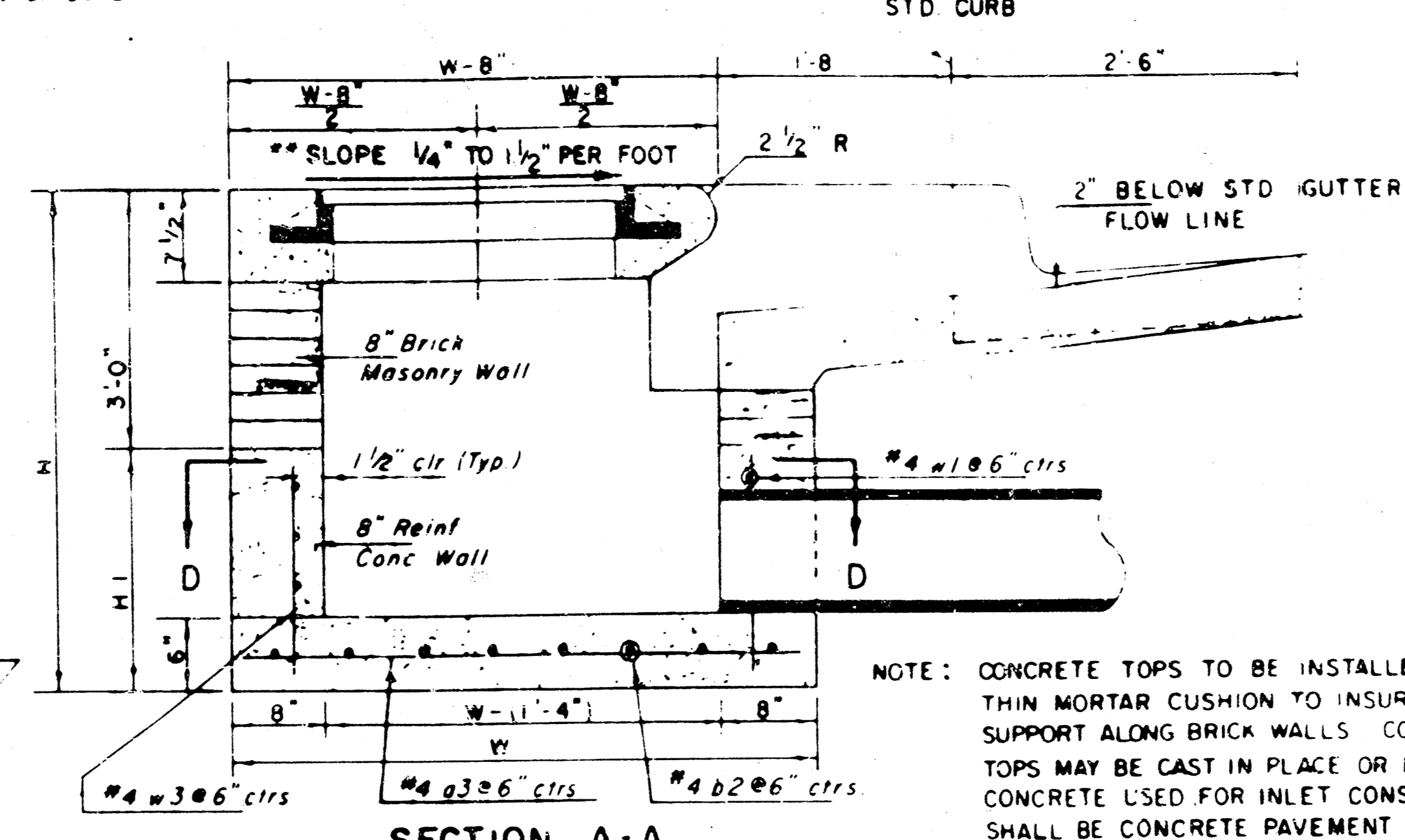
PLAN - LINE 1



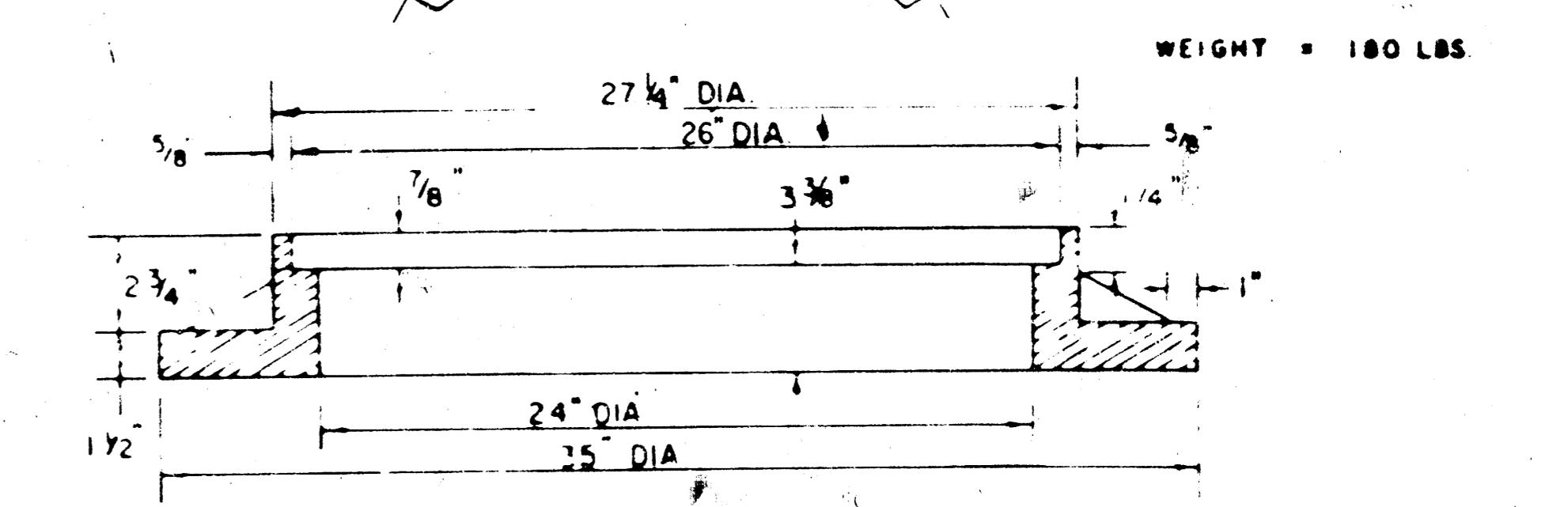
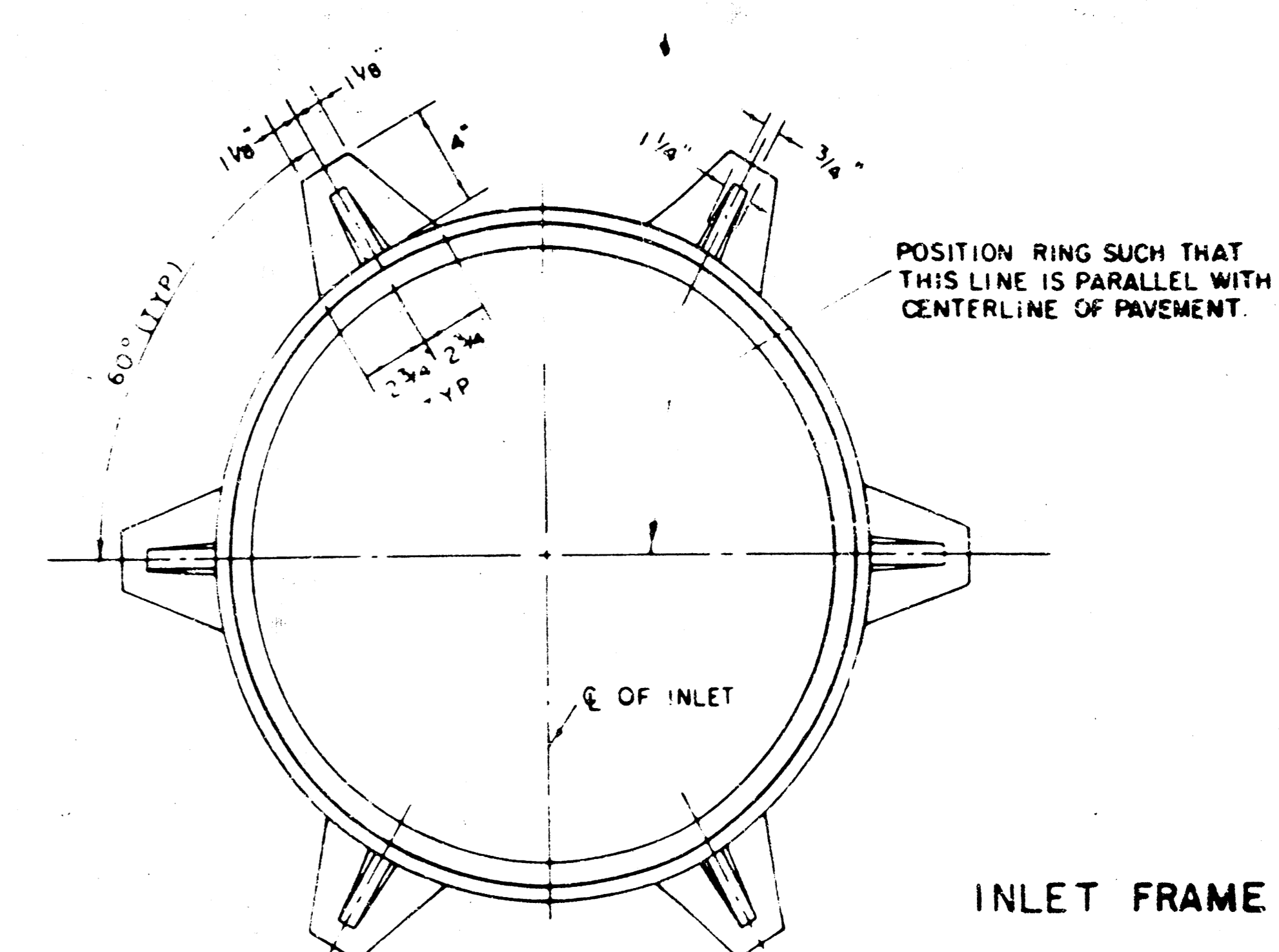
PROFILE - LINE 1



NOTE: INLET TOP REINFORCING SHALL BE SPACED ON 6" MAX CENTERS INLET LIDS SHALL BE NOTCHED OUT AS INDICATED TO FACILITATE CONSTRUCTION OF CURB



NOTE: CONCRETE TOPS TO BE INSTALLED ON THIN MORTAR CUSHION TO INSURE FULL SUPPORT ALONG BRICK WALLS. CONCRETE TOPS MAY BE CAST IN PLACE OR PRECAST. CONCRETE USED FOR INLET CONSTRUCTION SHALL BE CONCRETE PAVEMENT MIX WITH AIR ENTRAINMENT.



SEE CITY OF WICHITA STANDARD MANHOLE FRAME AND COVER DETAIL SHEET FOR COVER DETAILS TO BE USED WITH INLET FRAME.

NOTE: CONTRACTOR SHALL HAVE THE OPTION OF CONSTRUCTING 8" BRICK MASONRY WALLS BETWEEN THE CONCRETE INLET BASE AND TOP ON THIS INLET WHEN W = 6'-4" AND H = 7'-0" OR LESS.

ADDITIONAL CURB AND GUTTER CONSTRUCTION NECESSARY TO CONNECT SET-BACK INLET TO PAVEMENT WILL BE PAID FOR AT THE UNIT PRICE BID FOR EACH INLET HOOKUP.

INLET INVERT SHALL BE SHAPED WITH A SACK SAND MIX CONCRETE TO CREATE FLOW CHANNELS AND TO INCREASE HYDRAULIC EFFICIENCY SUCH THAT THE INLET WILL BE SELF-CLEANING BETWEEN ALL INLET AND/OR OUTLET PIPES.

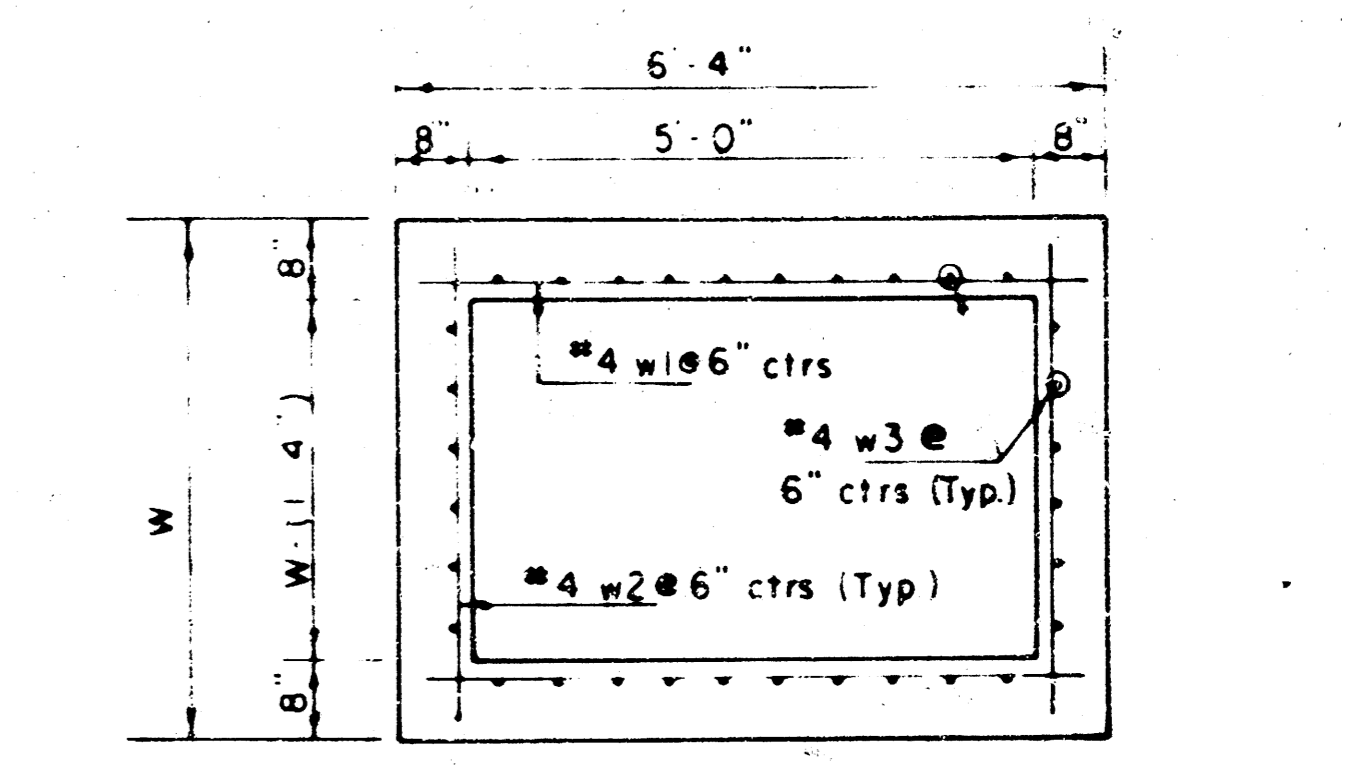
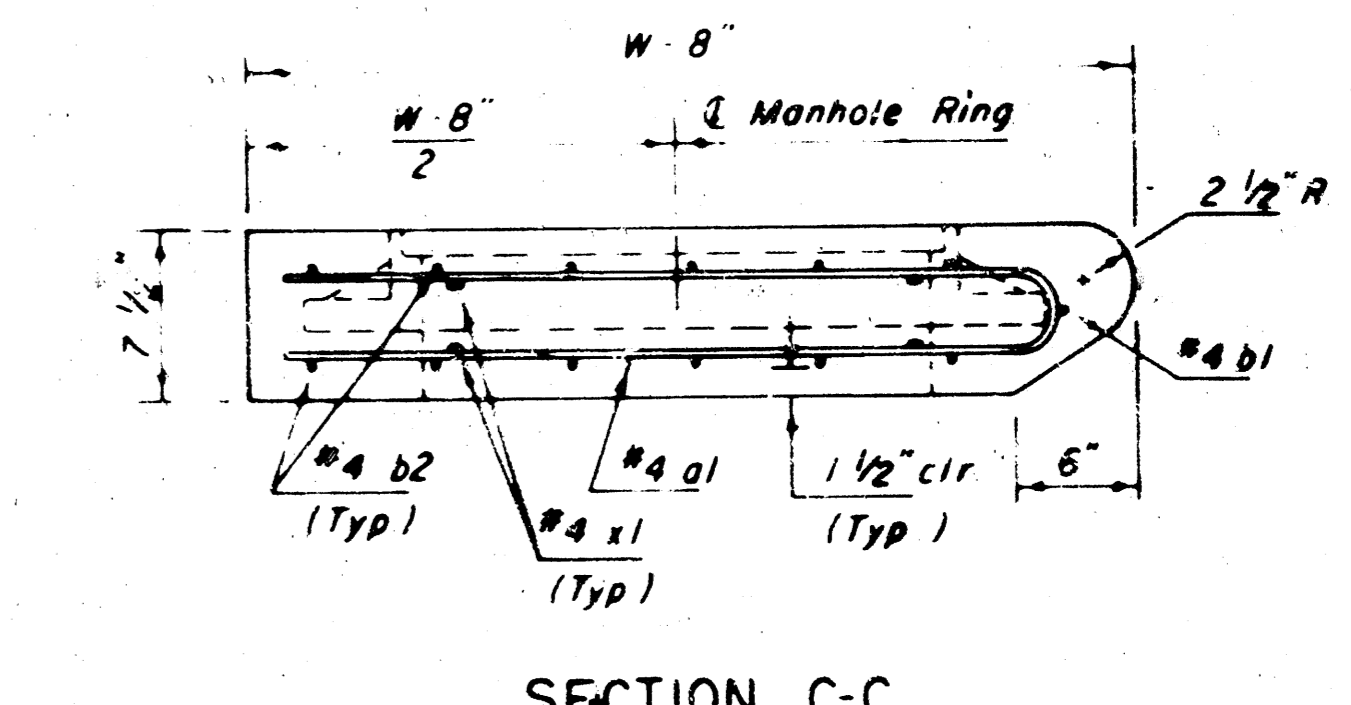
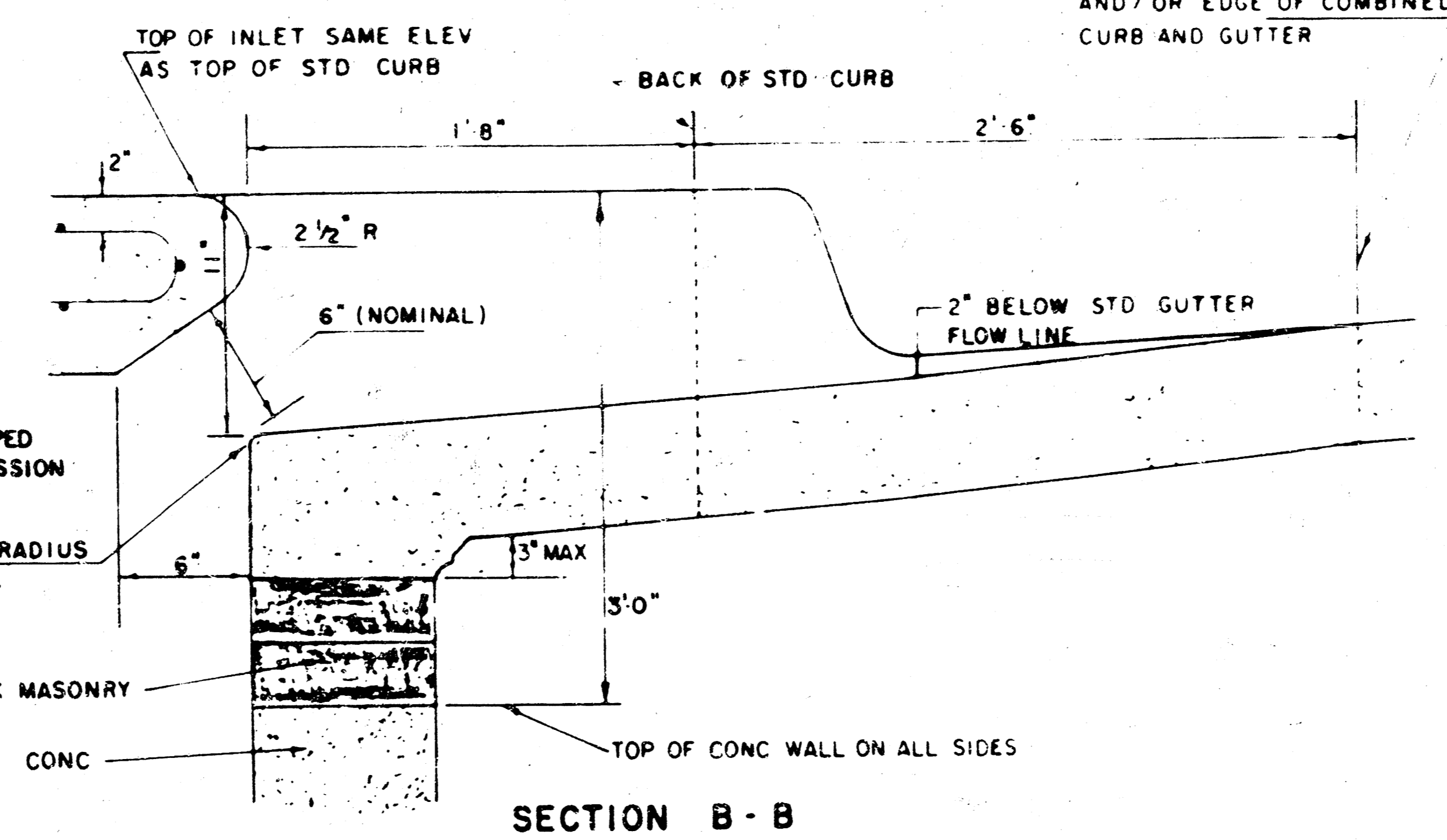
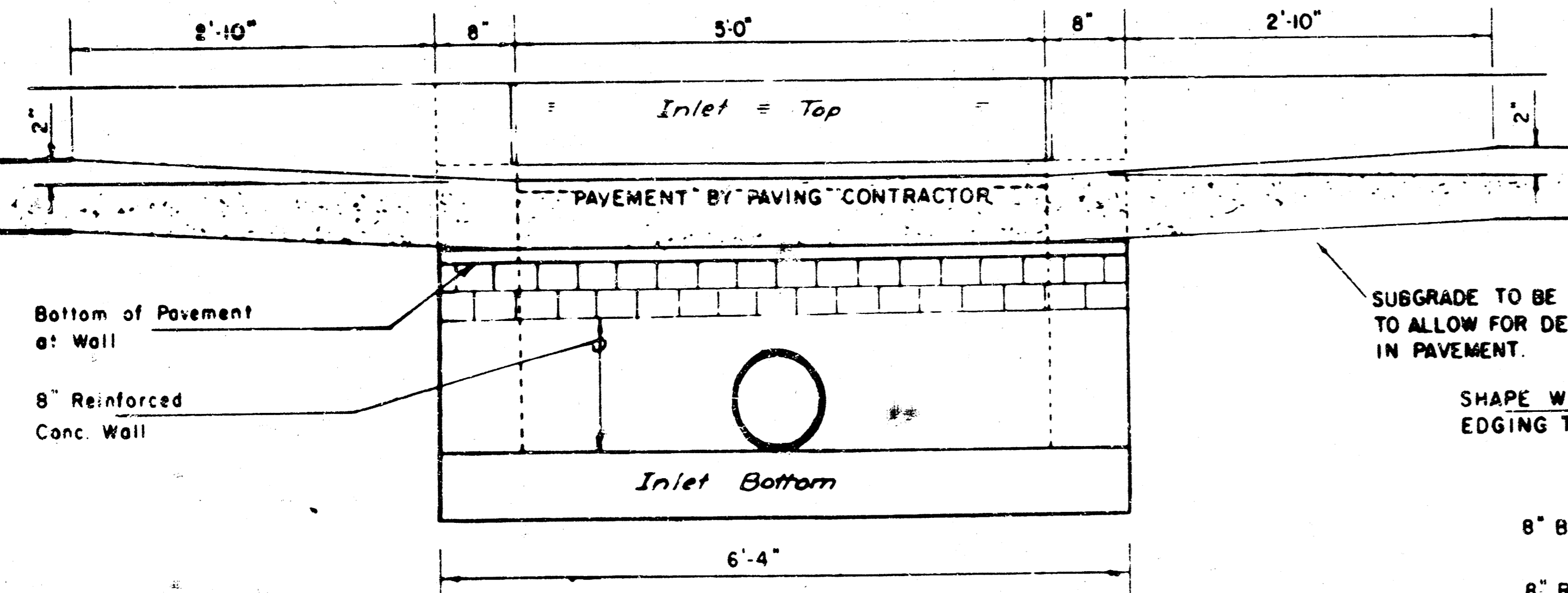
THE ENDS OF ALL PIPES INSTALLED IN INLETS SHALL BE CUT OFF FLUSH WITH THE INSIDE FACE OF THE INLET WALL.

\*\* NOTE: Slope of Inlet Tops to match Sidewalk or Parking Slopes within Limits indicated.

PRECAST SLAB AND FLOOR REINFORCING											
Mark	Size	W=4'-4"		W=5'-4"		W=6'-4"		W=7'-4"		W=8'-4"	
		No.	Length	No.	Length	No.	Length	No.	Length	No.	Length
1g1	#4	6	3'-7"	6	6'-7"	6	10'-7"	6	12'-7"	6	14'-7"
g2	#4	4	6'-0"	4	8'-0"	4	10'-0"	4	12'-0"	4	14'-0"
g3	#4	13	4'-1"	13	5'-1"	13	6'-1"	13	7'-1"	13	8'-1"
b1	#4	1	2'-9"	1	4'-9"	1	6'-9"	1	8'-9"	1	10'-9"
1b2	#4	23	6'-1"	29	6'-1"	35	6'-1"	41	6'-1"	47	6'-1"
21	#4	8	3'-10"	8	4'-2"	8	4'-10"	8	5'-2"		

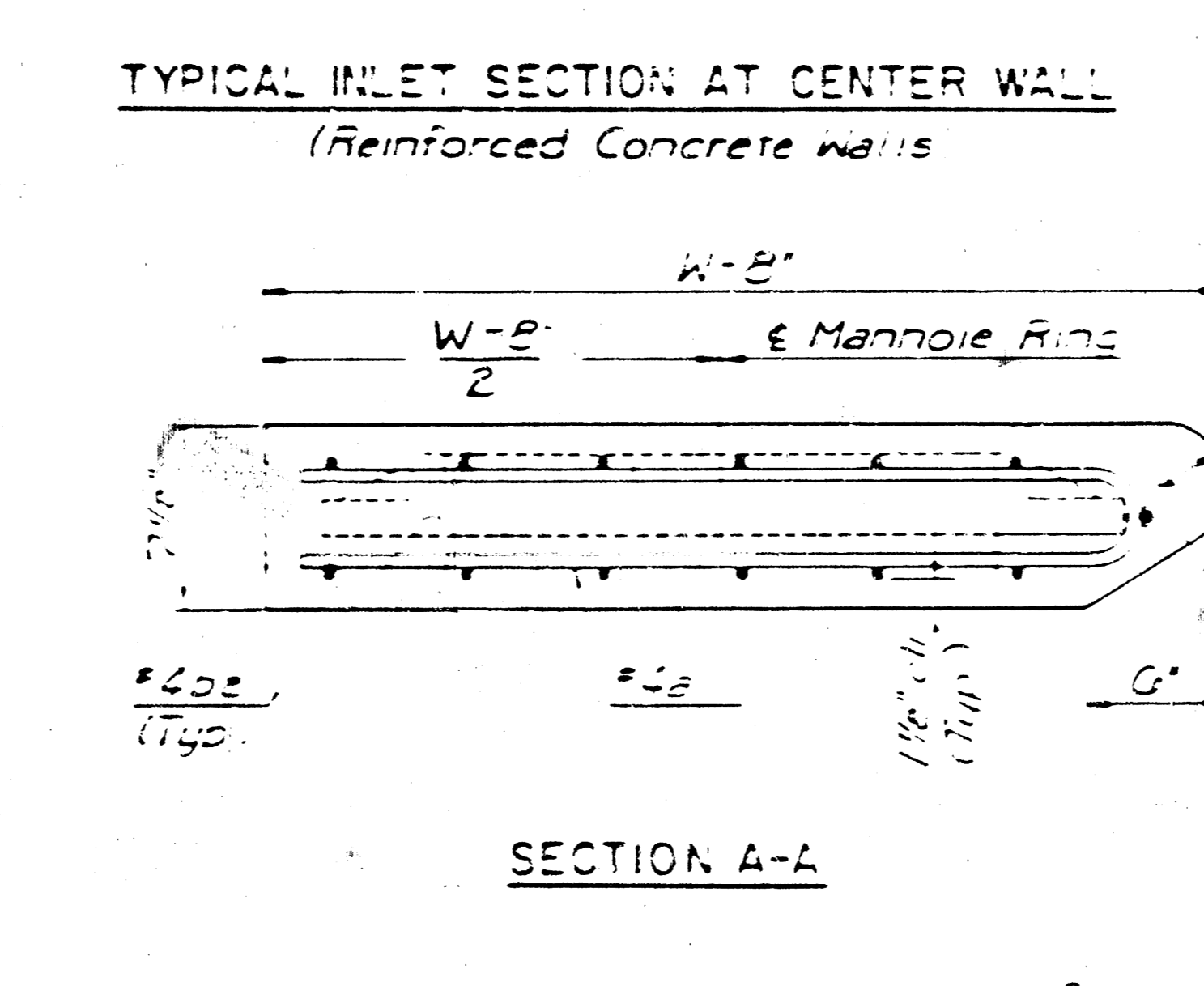
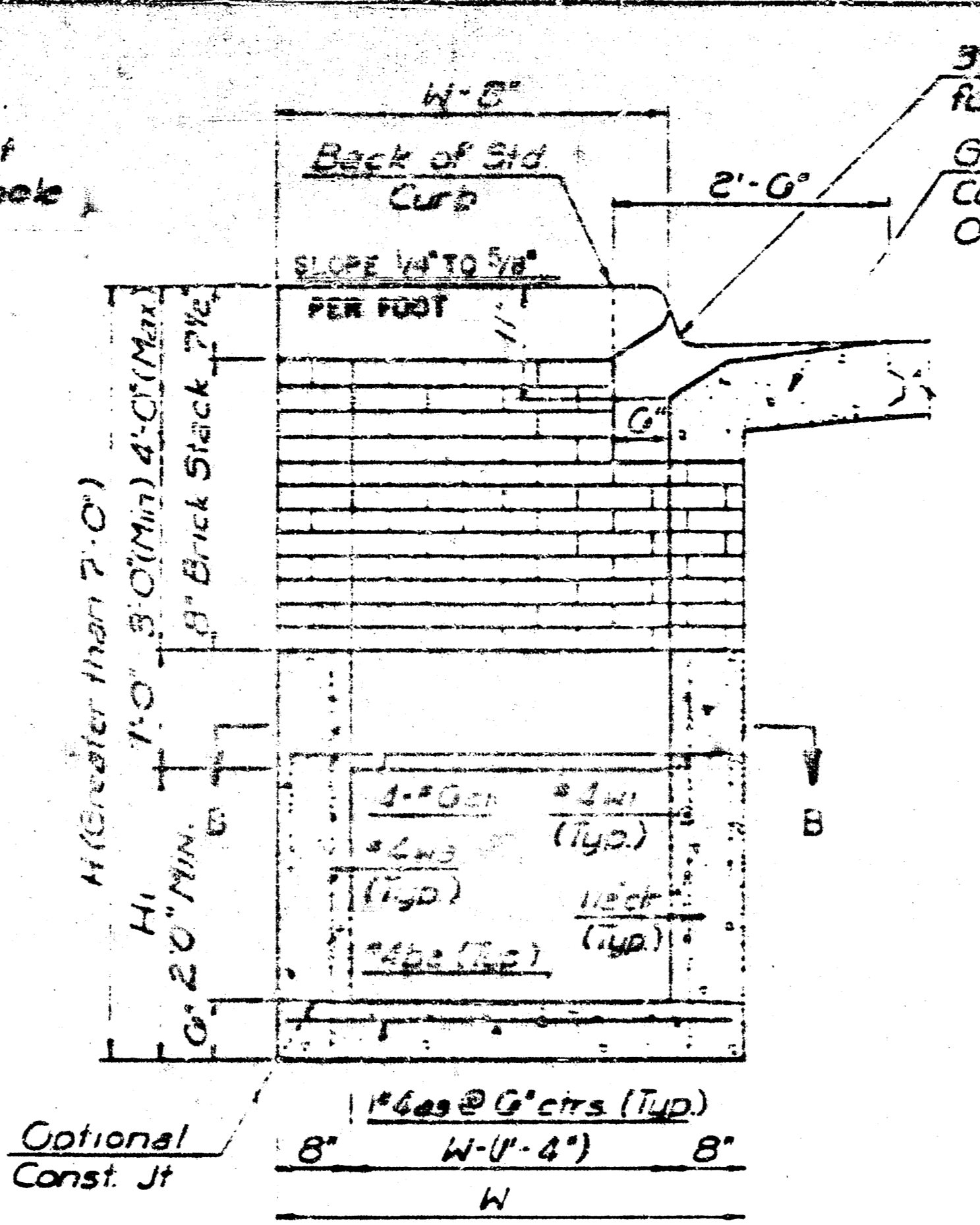
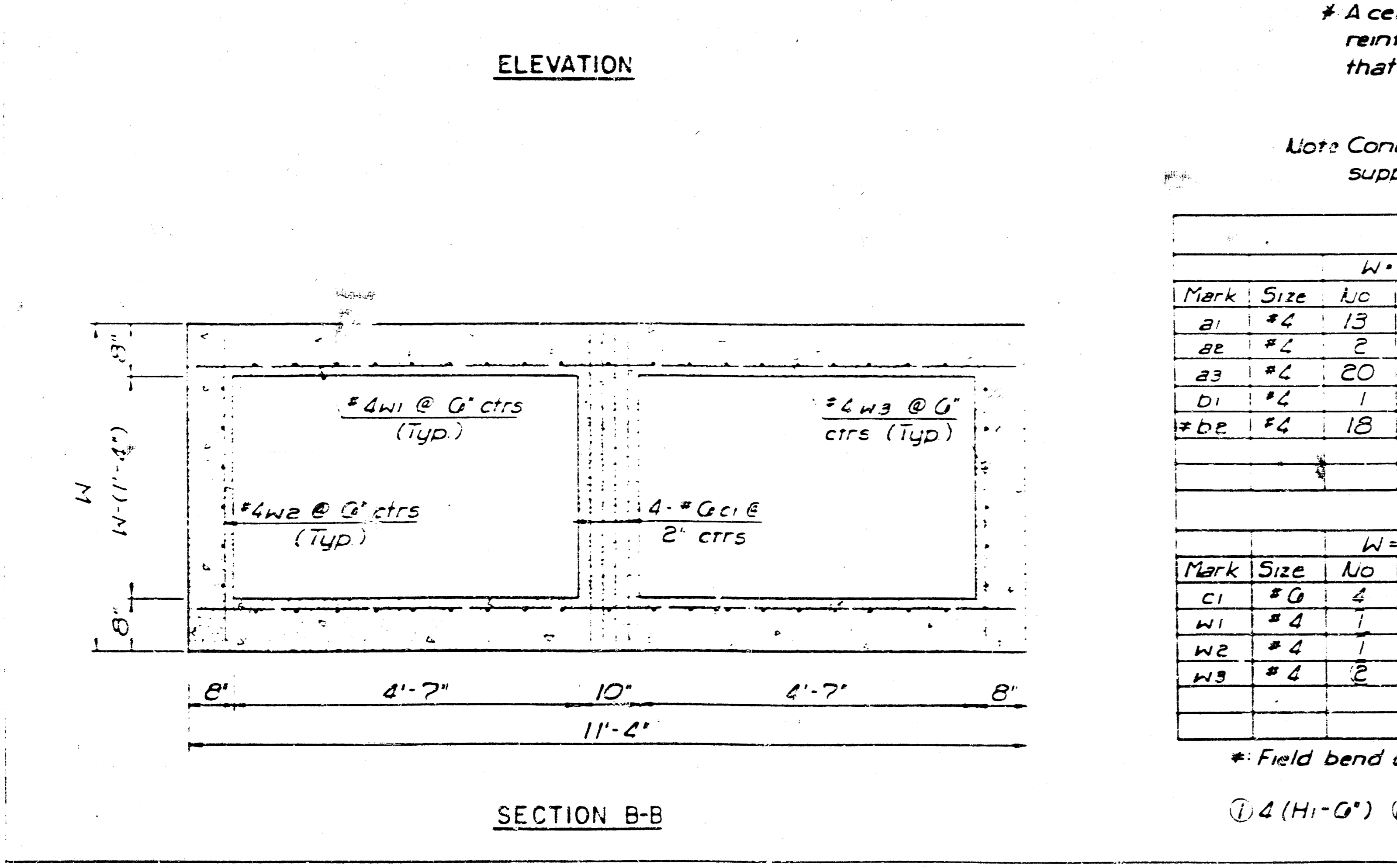
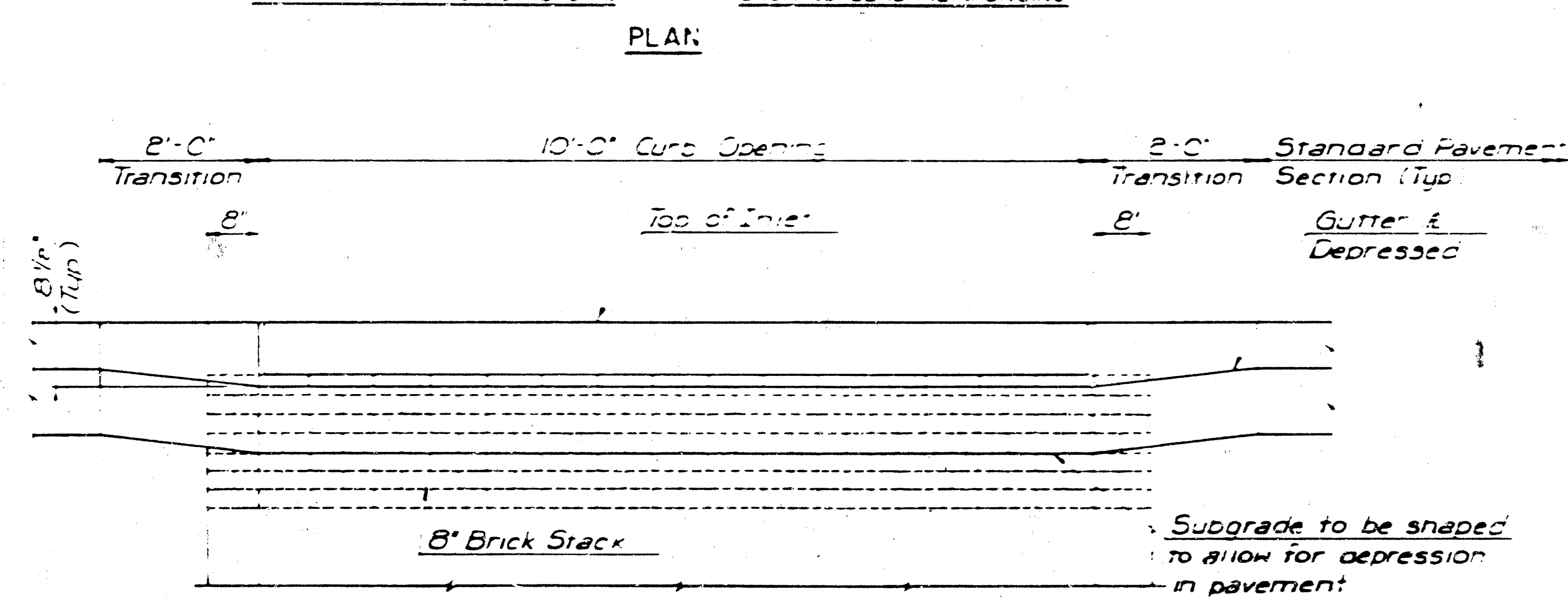
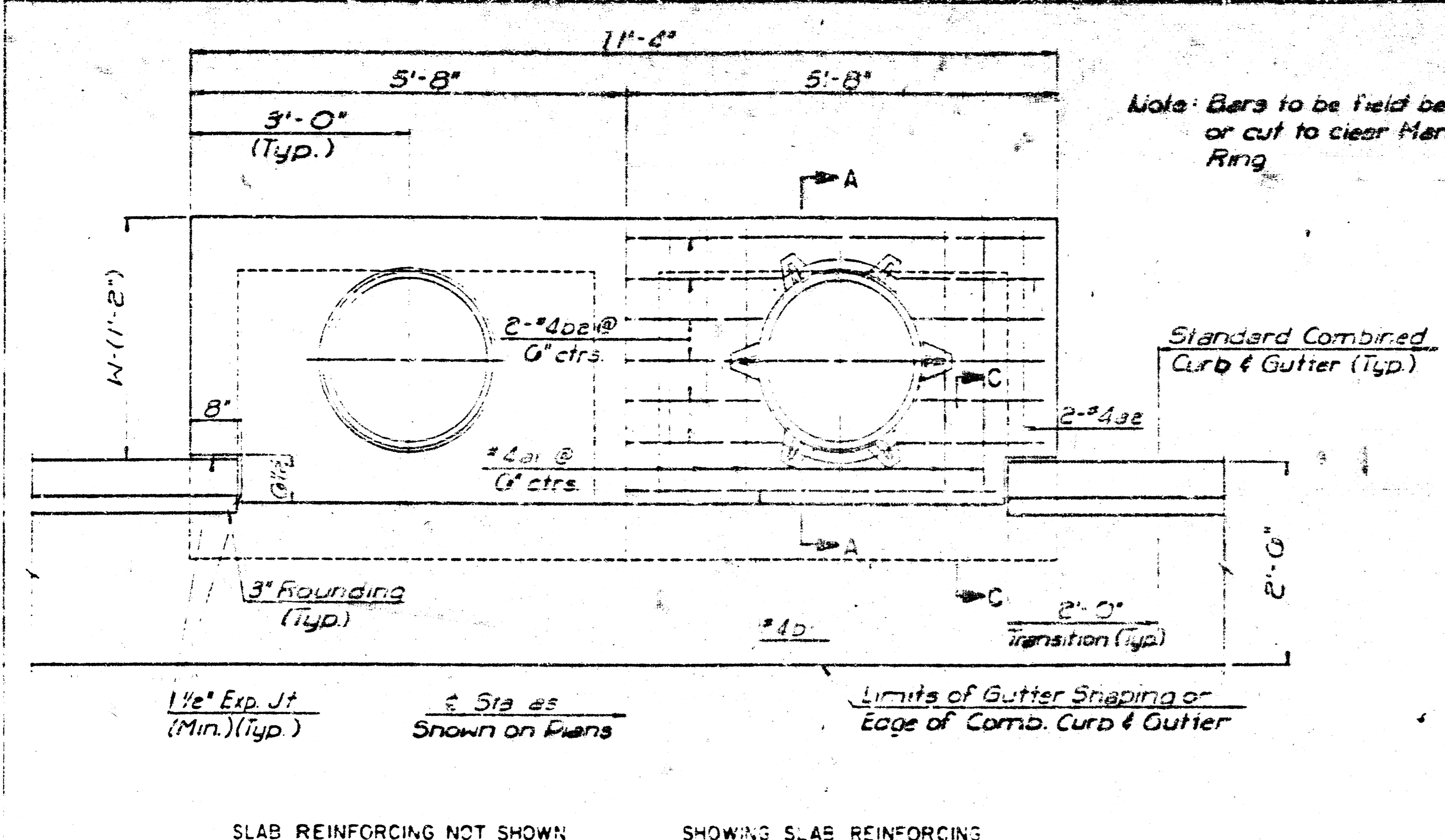
STANDARD CURB INLET PRECAST TOPS			
W	PRE-CAST TOP SIZE	PIPE SIZE	CU YD CONC
4'-4"	36" x 6'4" x 7 1/2"	24" B SMALLER	0.38 ±
5'-4"	48" x 6'4" x 7 1/2"	24" B 30"	0.51 ±
6'-4"	54" x 6'4" x 7 1/2"	36" B 42"	0.64 ±
7'-4"	66" x 6'4" x 7 1/2"	48" B 54"	0.77 ±
8'-4"	78" x 6'4" x 7 1/2"	60" B 66"	0.90 ±

\* Field bend or cut Reinforcing as required for clearance  
 ① 4(HI-12") (MI-12") Round down to nearest 0.5"  
 ② HI-3"



REVISED 11-30-1983  
 REVISED 12-21-1984  
 Revised 2-16-1989

DETAIL STANDARD TYPE IA CURB INLET  
 CITY OF WICHITA, KANSAS  
 INLET OPENING = 6" x 5' 0"  
 JUNE 1984



SECTION A-A

\* A center wall opening shall be provided by means of a section of reinforced concrete pipe. The minimum diameter used shall be that of the outlet pipe.

Note: Concrete top to be installed on thin mortar cushion to insure full support along walls.

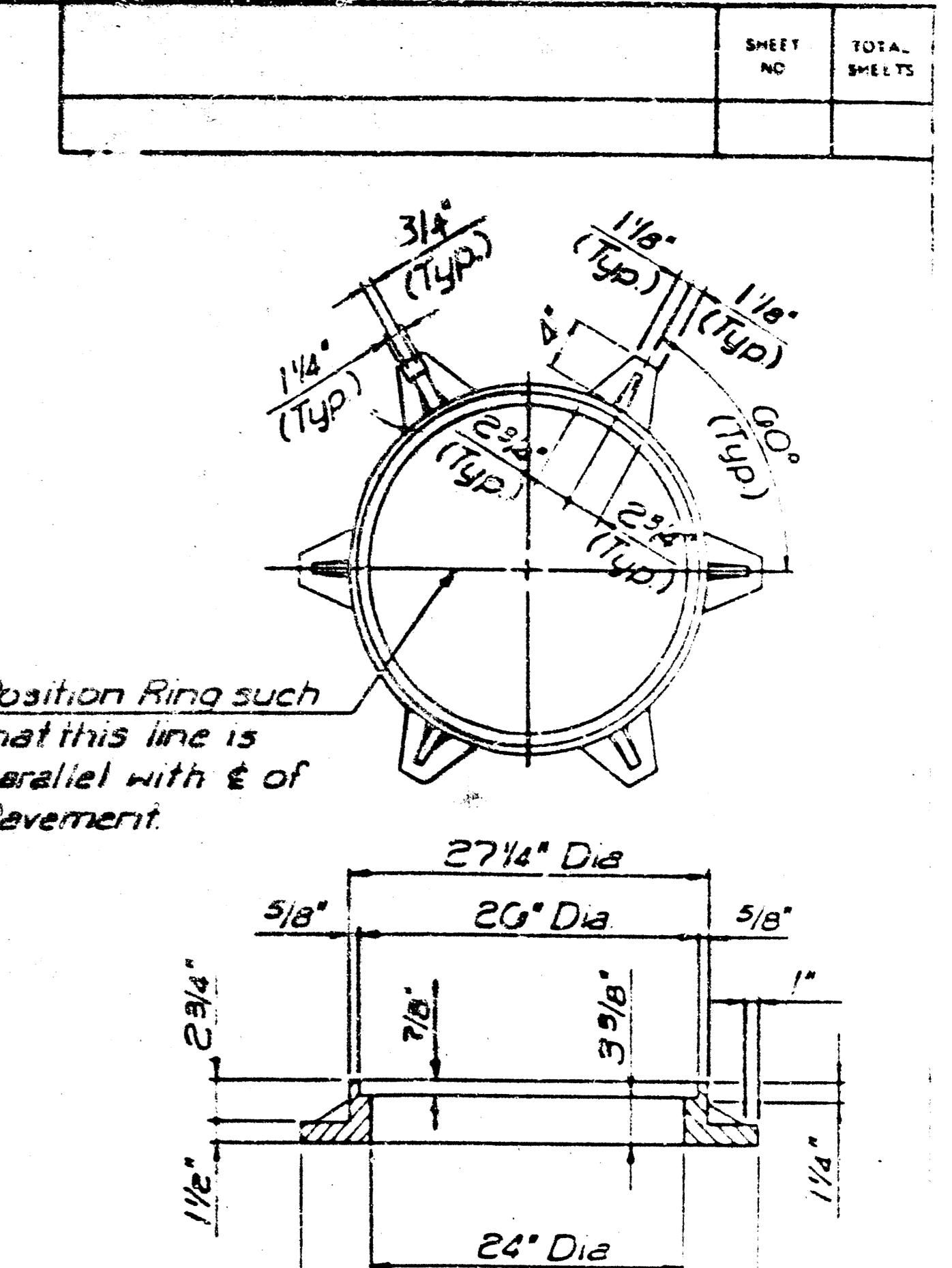
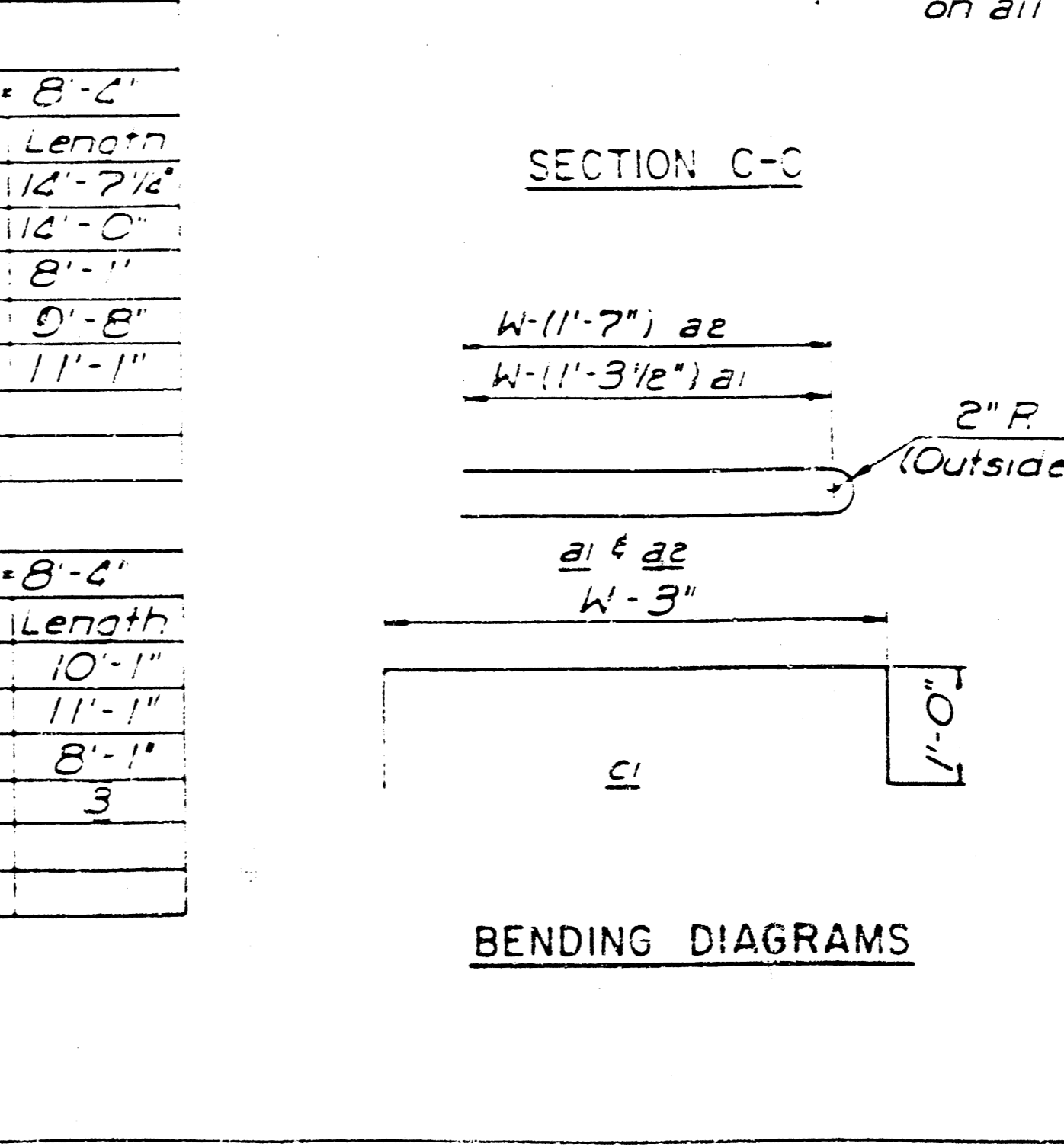
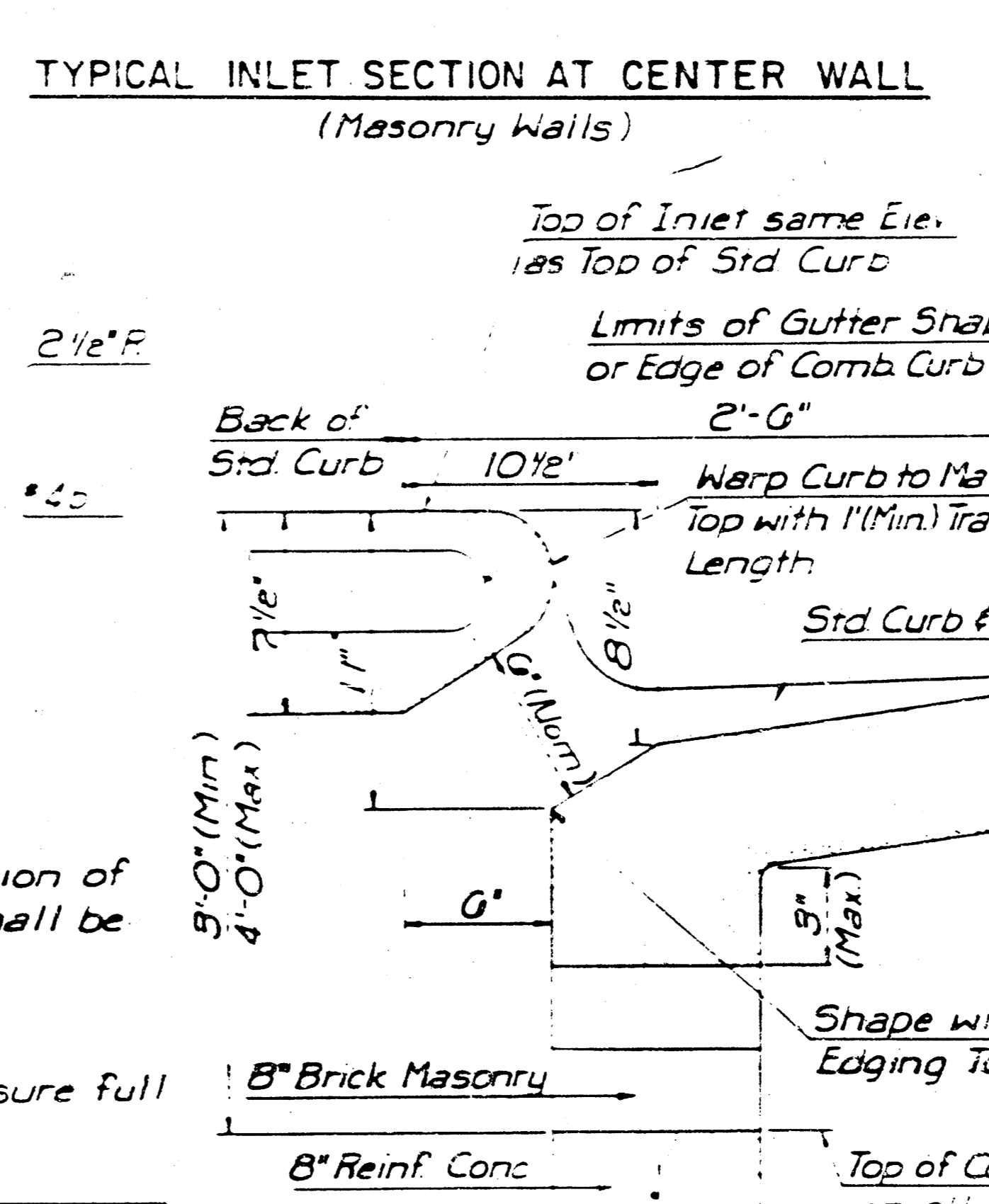
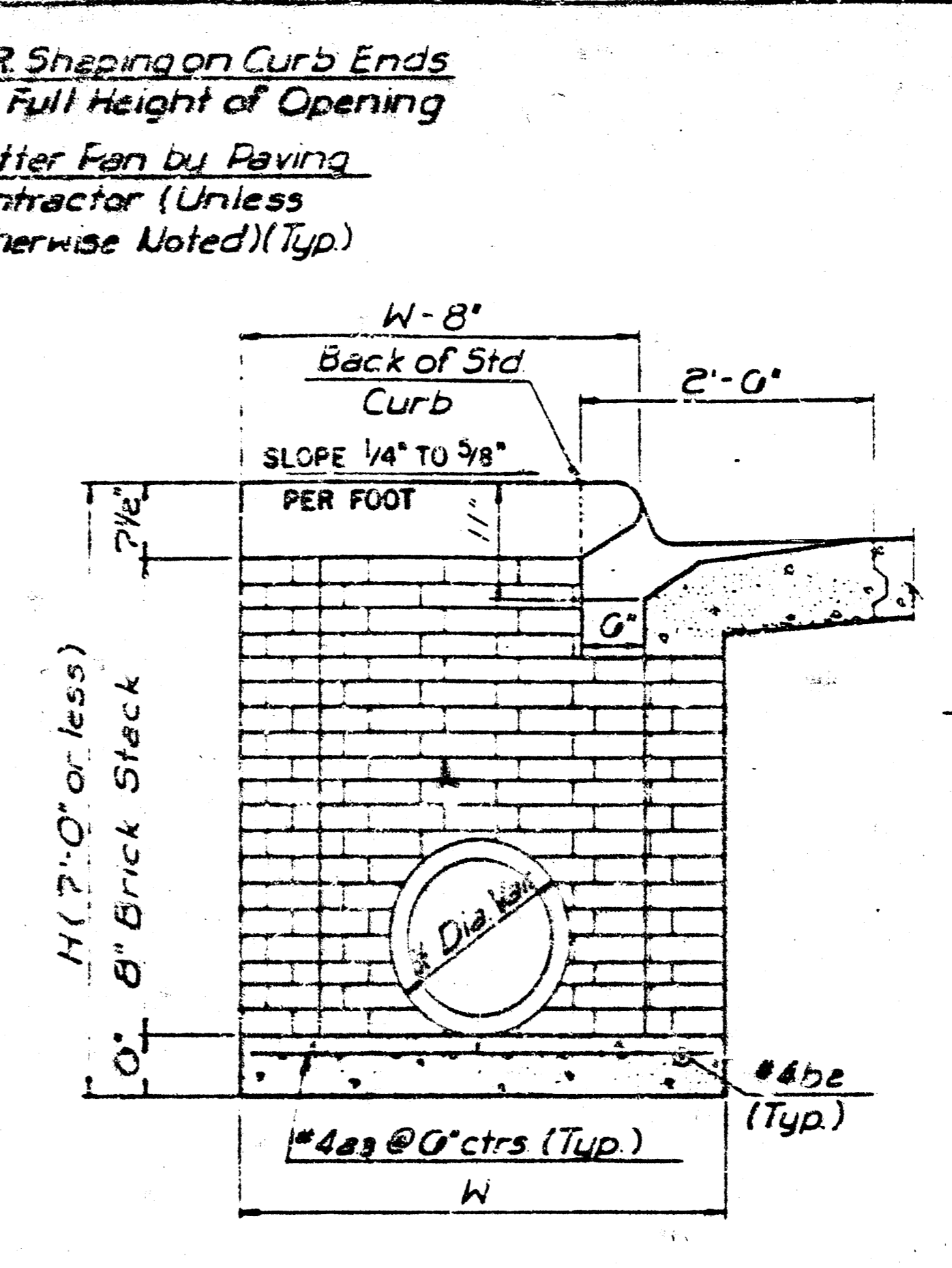
SLAB AND FLOOR REINFORCING									
Mark	Size	No	Length	No	Length	No	Length	No	Length
a1	#4	13	0'-7 1/4"	13	8'-7 1/2"	13	10'-7 1/4"	13	12'-7 1/4"
ae	#4	2	0'-0"	2	16'-0"	2	10'-0"	2	14'-0"
a3	#4	20	4'-1"	20	5'-1"	20	6'-1"	20	7'-1"
b1	#4	1	5'-8"	1	9'-8"	1	9'-8"	1	9'-8"
#be	#4	18	11'-1"	24	11'-1"	30	11'-1"	36	11'-1"

WALL REINFORCING									
Mark	Size	No	Length	No	Length	No	Length	No	Length
c1	#4	4	6'-1"	4	7'-1"	4	8'-1"	4	9'-1"
w1	#4	1	11'-1"	1	11'-1"	1	11'-1"	1	11'-1"
w2	#4	1	4'-1"	1	5'-1"	1	6'-1"	1	7'-1"
w3	#4	2	3	2	3	2	3	2	3

\* Field bend or cut Reinforcing as required for clearance

① 4 (H1-0') @ 40.4 (W-1) ③ H1-10'



SEE CITY OF WICHITA STANDARD MANHOLE FRAME AND COVER DETAIL SHEET FOR COVER DETAILS TO BE USED WITH INLET FRAME.

GENERAL NOTES

Concrete shall be 3000 psi. Standard Paving Mix All exposed edges shall be finished with an edging tool. Reinforcing Bars shall be field bent or cut to clear pipes. All bars are #4 bars at 12" spacing and shall have a minimum clearance of 1 1/2" unless otherwise noted. Floors of inlet shall be shaped with 8 Sack Sand Mix Concrete to increase hydraulic efficiency such that the inlet will be self cleaning between all inlet and/or outfall pipes. The Contractor will be required to construct 8" Brick Masonry Walls between the concrete inlet base and top on this inlet when H=7'-0" or less and W=6'-4" or less.

THE ENDS OF ALL PIPES INSTALLED IN INLETS SHALL BE CUT OFF FLUSH WITH THE INSIDE FACE OF THE INLET WALL.

REVISED 12-21-1984

DETAIL STANDARD  
TYPE I CURB INLET  
INLET OPENING = 6" x 10'-0"  
CITY OF WICHITA  
M.E. LINDEBAK, CITY ENGINEER  
OCTOBER 1984

