

STORM WATER SEWER #522 to serve AUBURN HILLS 8TH ADDITION

Project Number
468-82956
Index Code
751275

CITY OF WICHITA, KANSAS
Michael E. Lindebak, P.E. City Engineer

GENERAL NOTES:

- Contractor will be required to provide notice to utility companies a minimum of twenty-four (24) hours prior to any excavation, as follows:

Kansas One-Call	687-2470
-----------------	----------

The Contractor must notify the following in case of an emergency:

Multimedia Cablevision	262-0661
K.P.L. Gas Service Company	353-8630
Kansas Gas & Electric Company	383-8600
Peoples Gas Company	942-8350
Southwestern Bell Telephone Company	1-571-2611
City of Wichita Water Dept.	265-4908
City of Wichita Traffic Engineering	269-4446
- Underground utility service lines and overhead utility pole lines are to be adjusted as necessary by others prior to construction unless the plans specifically call for their adjustment by the Contractor or unless the plans specifically identify a utility to be adjusted by its owner during construction. Existing utilities and their location, as shown on the plans, represent the best information obtainable for design. The Contractor will be required to work around existing utilities within the right-of-way which do not conflict with proposed construction.
- Trees and shrubs in public right-of-way which are in direct conflict with proposed new construction shall be removed by the Contractor with the Engineer's approval. Trees and shrubs which are not in direct conflict with proposed new construction shall be saved and protected from damage.
- The Contractor shall be responsible for preserving property irons. The Contractor will be required to re-establish any property irons which are damaged or destroyed by his construction operations. Such irons shall be re-established by a licensed land surveyor in accordance with state laws.
- All areas disturbed by construction operations shall be seeded with rye grass at a rate of 300 lbs/acre immediately following construction in that area. Prior to seeding, area shall be prepared per City specs.
- When connecting to existing inlet or stub, the contractor shall reshape inlet bottom or adjust the existing stub's alignment or elevation as necessary. Cost shall be subsidiary to other bid items.

BENCHMARKS:

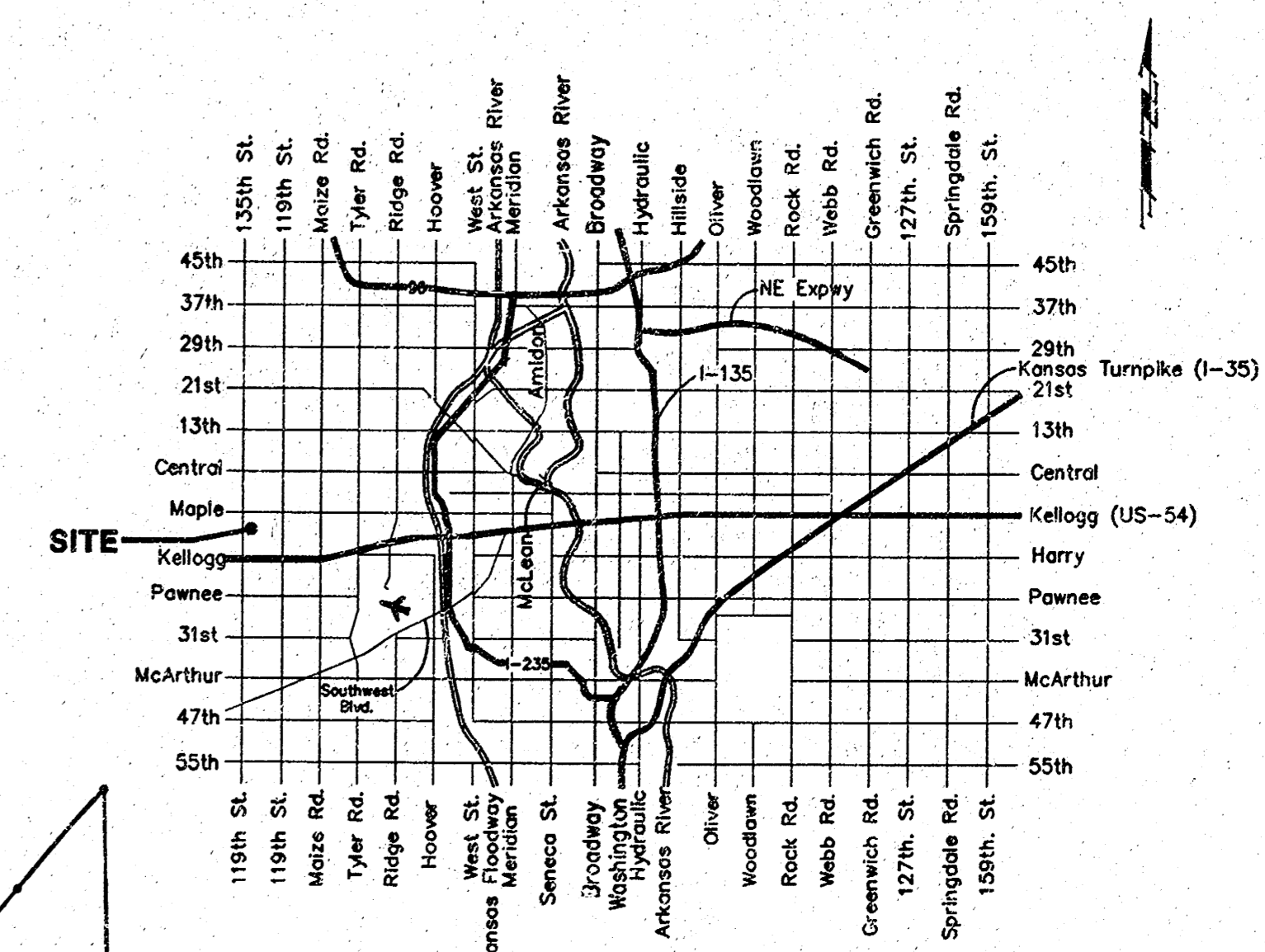
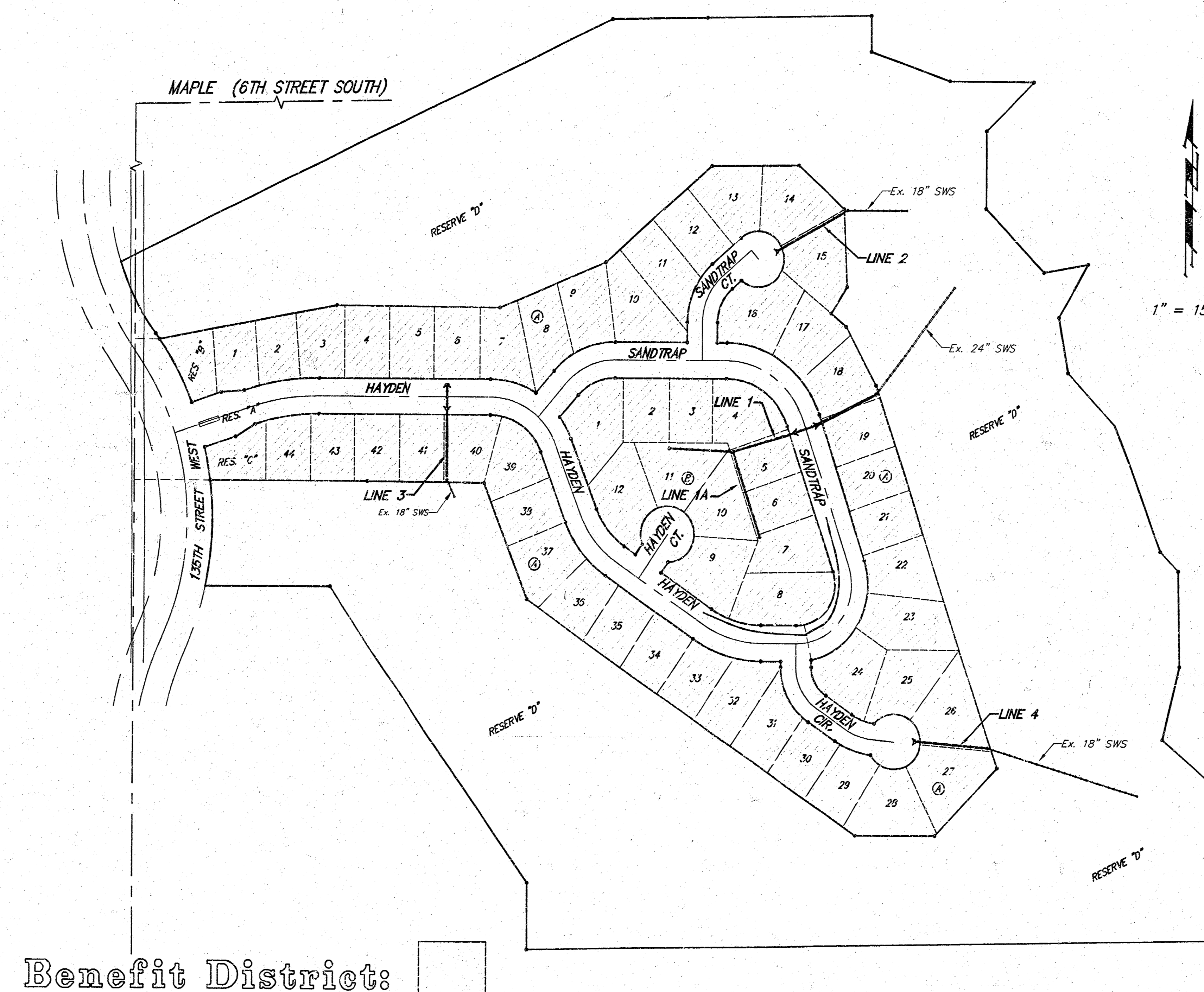
City Disc - 34.3' E. & 35' N. of
S.W. Corner of N.W. 1/4, Sec. 25,
T-27-S, R-2-W.
Elev. = 156.63 (City Datum)

City Disc - 135th St. W. & Maple,
30' N. & 15' E. Cl. Both.
Elev. = 150.20 (City Datum)

INDEX:

Title Sheet	1
Line 1	2
Line 1A	3
Line 2	4
Line 3	5
Line 4	6
Easement Grading Plan	7
Standard Drop Inlet Detail	8
Type 1A-Single Curb Inlet Detail	9
Special Yard Inlet Detail	10
Copy of Plat	11

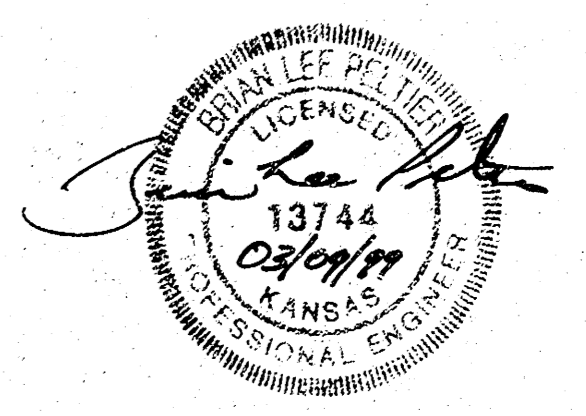
BOOKED
D-137
10/99
MCG



Vicinity Map

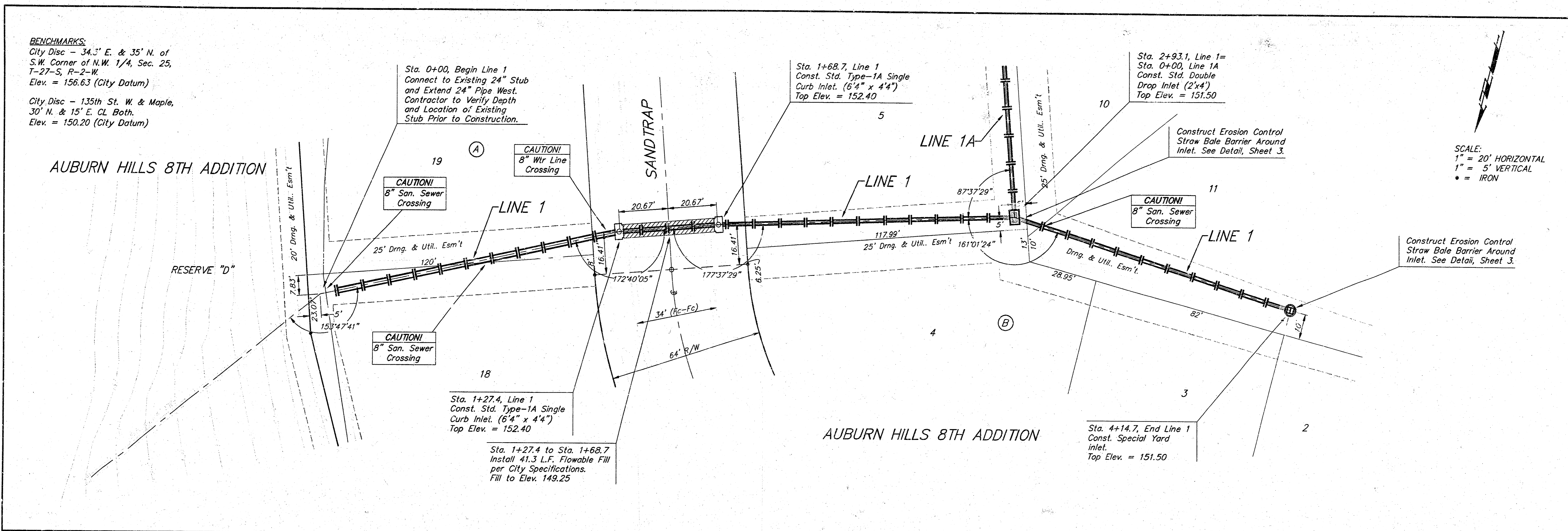
Benefit District:

SE COR. NW 1/4,
SEC. 25, T27S, R2W



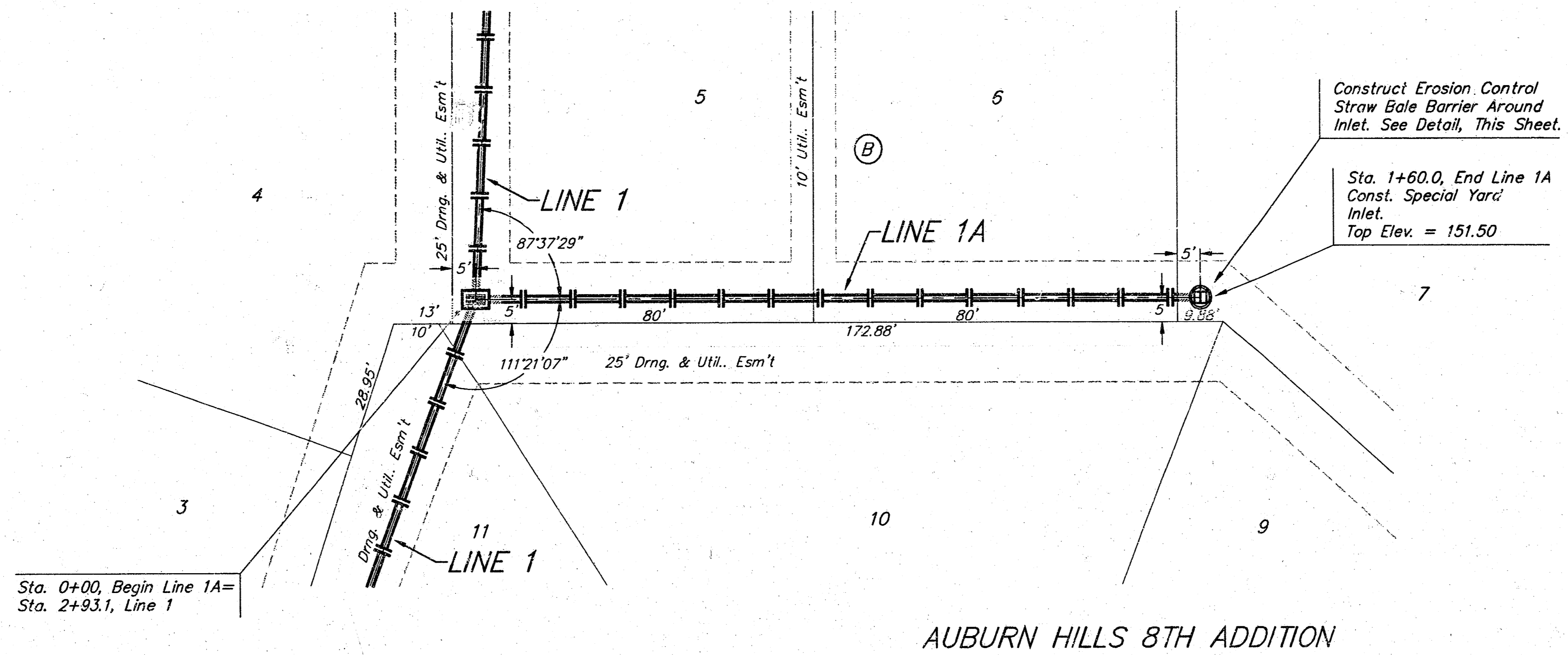
BAUGHMAN COMPANY P.A.
ENGINEERING, SURVEYING, & PLANNING
316-262-7271 • 315 ELLIS • WICHITA, KANSAS 67211

BENCHMARKS:
 City Disc - 34.3' E. & 35' N. of
 S.W. Corner of N.W. 1/4, Sec. 25,
 T-27-S, R-2-W
 Elev. = 156.63 (City Datum)
 City Disc - 135th St. W. & Maple,
 30' N. & 15' E. CL. Both.
 Elev. = 150.20 (City Datum)

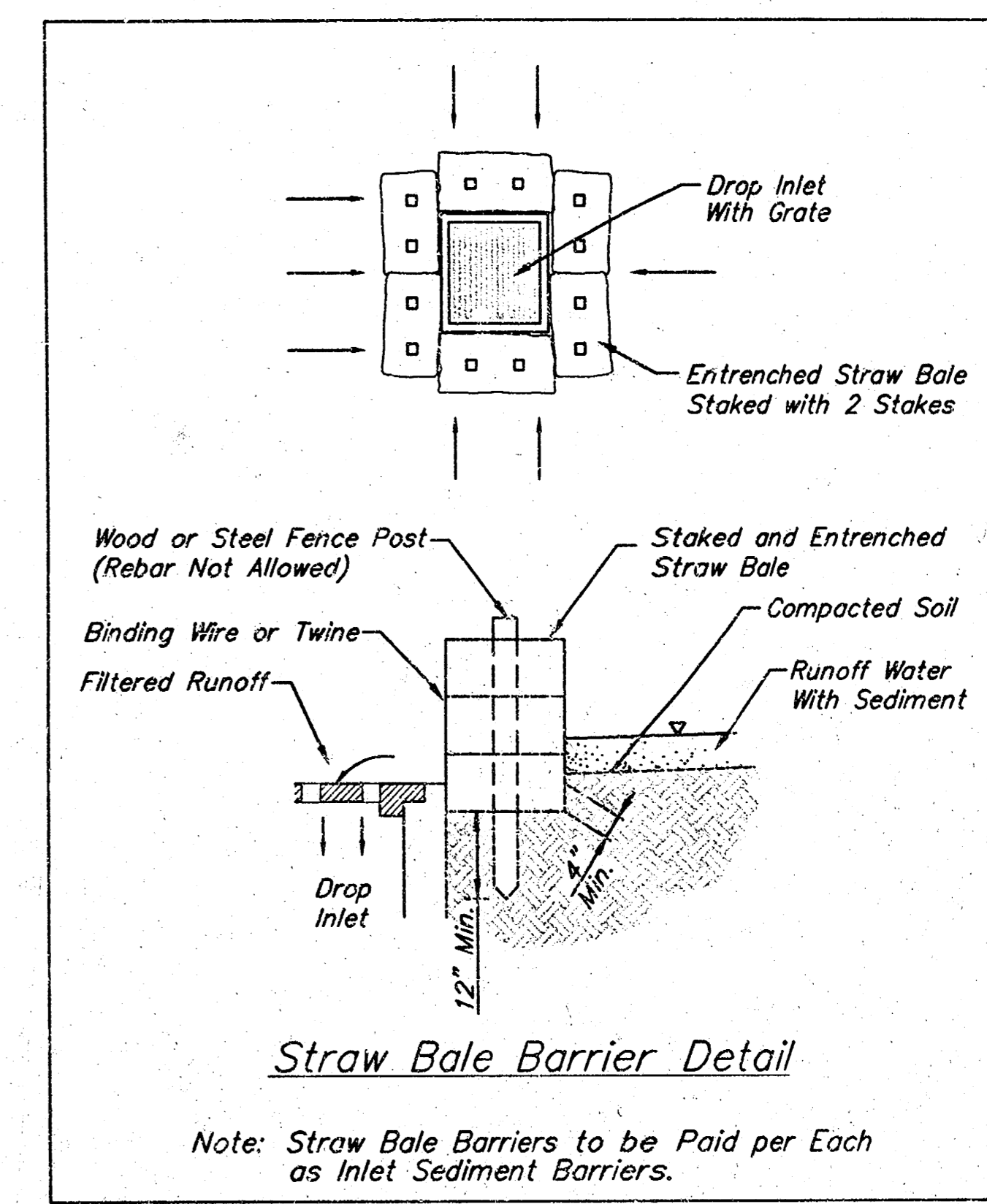


BENCHMARKS:
 City Disc - 34.3' E. & 35' N. of
 S.W. Corner of N.W. 1/4, Sec. 25,
 T-27-S, R-2-W.
 Elev. = 156.63 (City Datum)
 City Disc - 135th St. W. & Maple,
 30' N. & 15' E. CL Both.
 Elev. = 150.20 (City Datum)

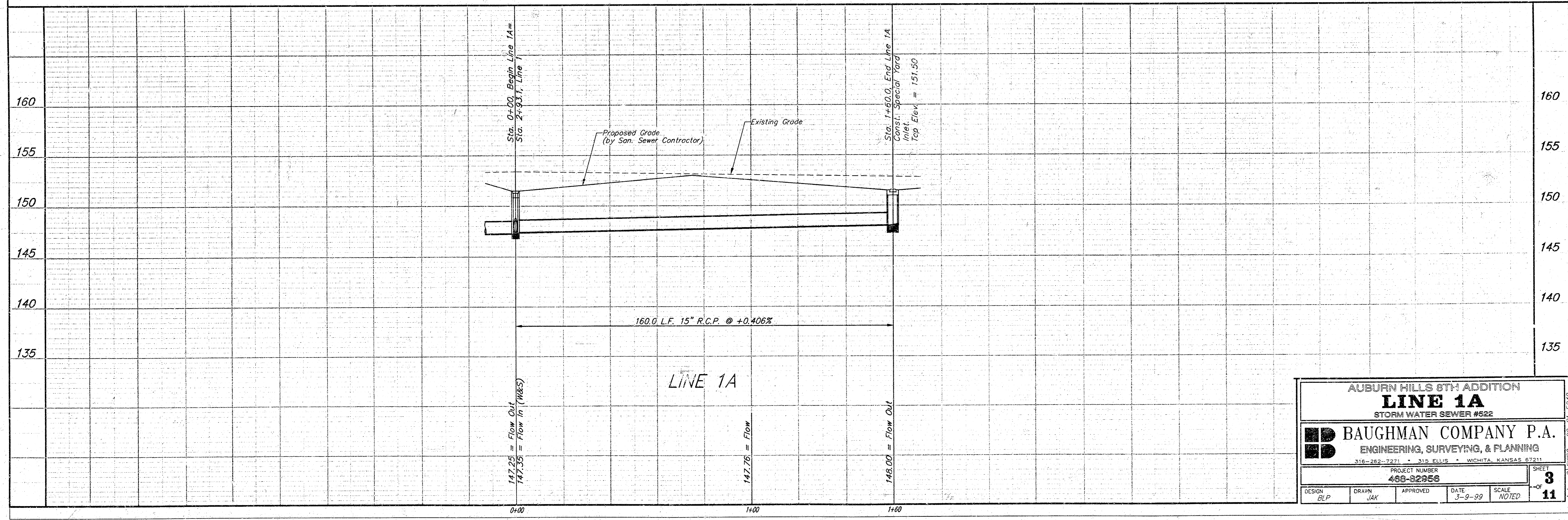
AUBURN HILLS 8TH ADDITION



SCALE:
 1" = 20' HORIZONTAL
 1" = 5' VERTICAL
 • = IRON



Note: Straw Bale Barriers to be Paid for Each as Inlet Sediment Barriers.



AUBURN HILLS 8TH ADDITION
LINE 1A
 STORM WATER SEWER #522

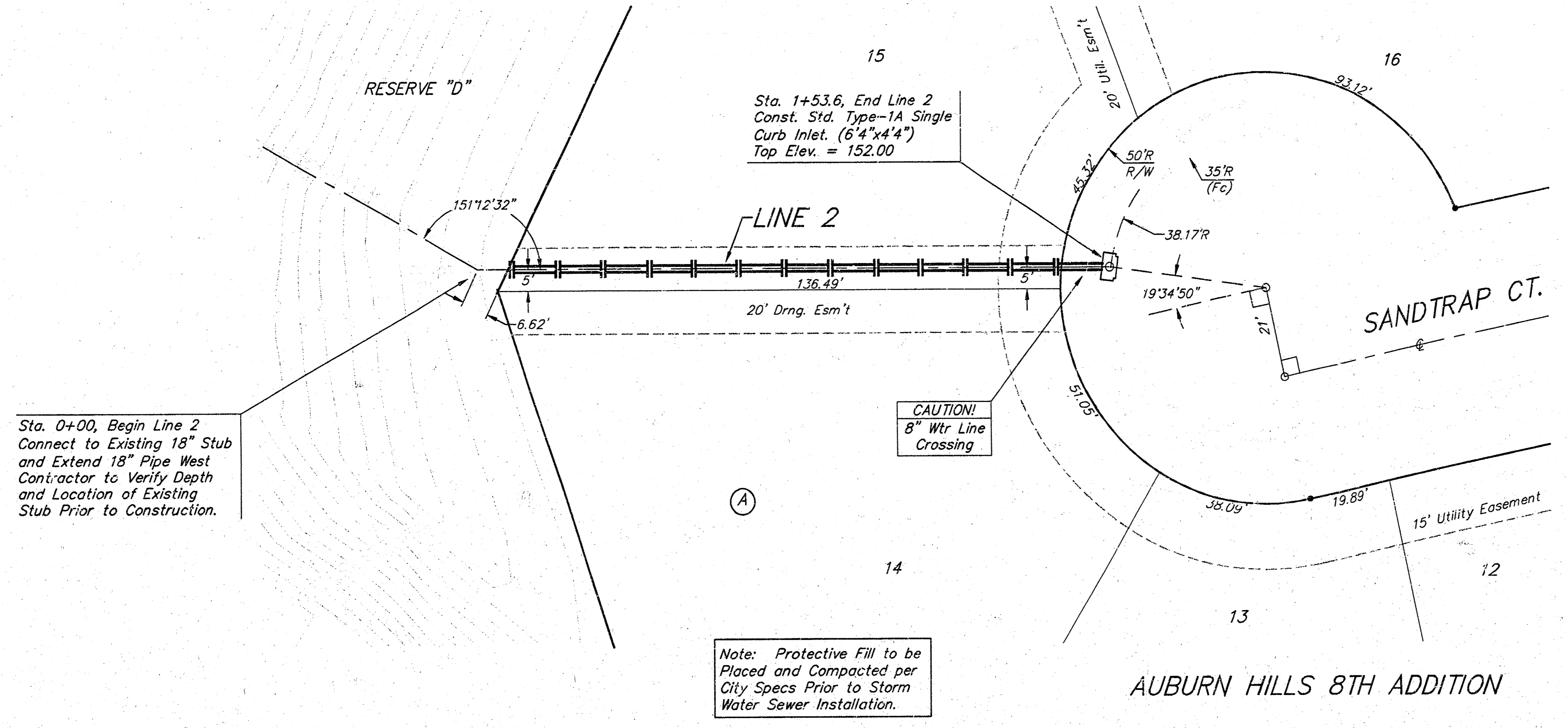
BAUGHMAN COMPANY P.A.
 ENGINEERING, SURVEYING, & PLANNING
316-202-7271 • 315 ELLIS • WICHITA, KANSAS 67211

DESIGN <small>BLP</small>	DRAWN <small>JAK</small>	APPROVED	DATE 3-9-99
PROJECT NUMBER 460-02956			SCALE NOTED
SHEET 8			OF 11

Auburn Hills 8th Addition 99-01-E248

BENCHMARKS:
 City Disc - 34.3' E. & 35' N. of
 S.W. Corner of N.W. 1/4, Sec. 25,
 T-27-S, R-2-W.
 Elev. = 156.63 (City Datum)
 City Disc - 135th St. W. & Maple,
 30' N. & 15' E. CL Both.
 Elev. = 150.20 (City Datum)

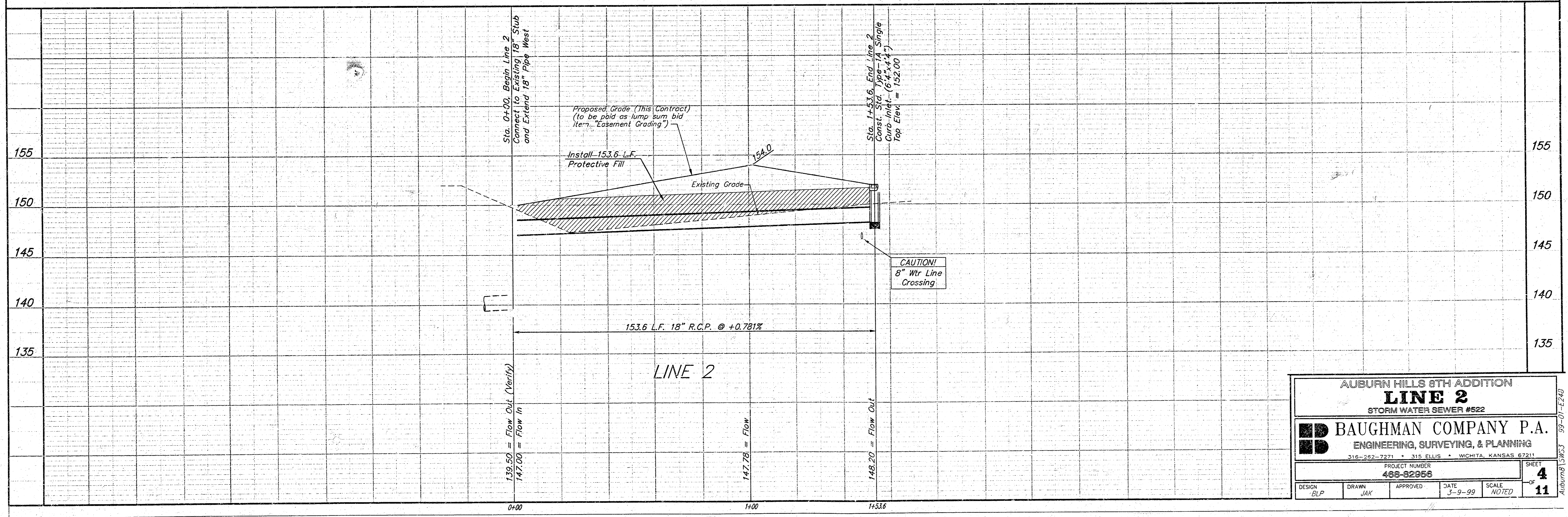
AUBURN HILLS 8TH ADDITION



SCALE:
 1" = 20' HORIZONTAL
 1" = 5' VERTICAL
 • = IRON

Sta. 0+00, Begin Line 2
 Connect to Existing 18" Stub
 and Extend 18" Pipe West
 Contractor to Verify Depth
 and Location of Existing
 Stub Prior to Construction.

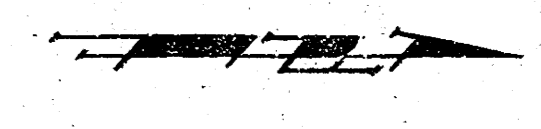
Note: Protective Fill to be
 Placed and Compacted per
 City Specs Prior to Storm
 Water Sewer Installation.



AUBURN HILLS 8TH ADDITION			
LINE 2			
STORM WATER SEWER #522			
BAUGHMAN COMPANY P.A. ENGINEERING, SURVEYING, & PLANNING 316-292-7271 • 313 ELLIS • WICHITA, KANSAS 67211			
PROJECT NUMBER		SHEET	
489-82956		4	
DESIGN	DRAWN	APPROVED	DATE
BLP	JAK		3-9-99
SCALE		NOTED	
		11	

Auburn8\3103 99-01-1210

BENCHMARKS:
 City Disc - 34.3' E. & 35' N. of
 S.W. Corner of N.W. 1/4, Sec. 25,
 T-27-S, R-2-W.
 Elev. = 156.63 (City Datum)
 City Disc - 135th St. W. & Maple,
 30' N. & 15' E. CL Both.
 Elev. = 150.20 (City Datum)

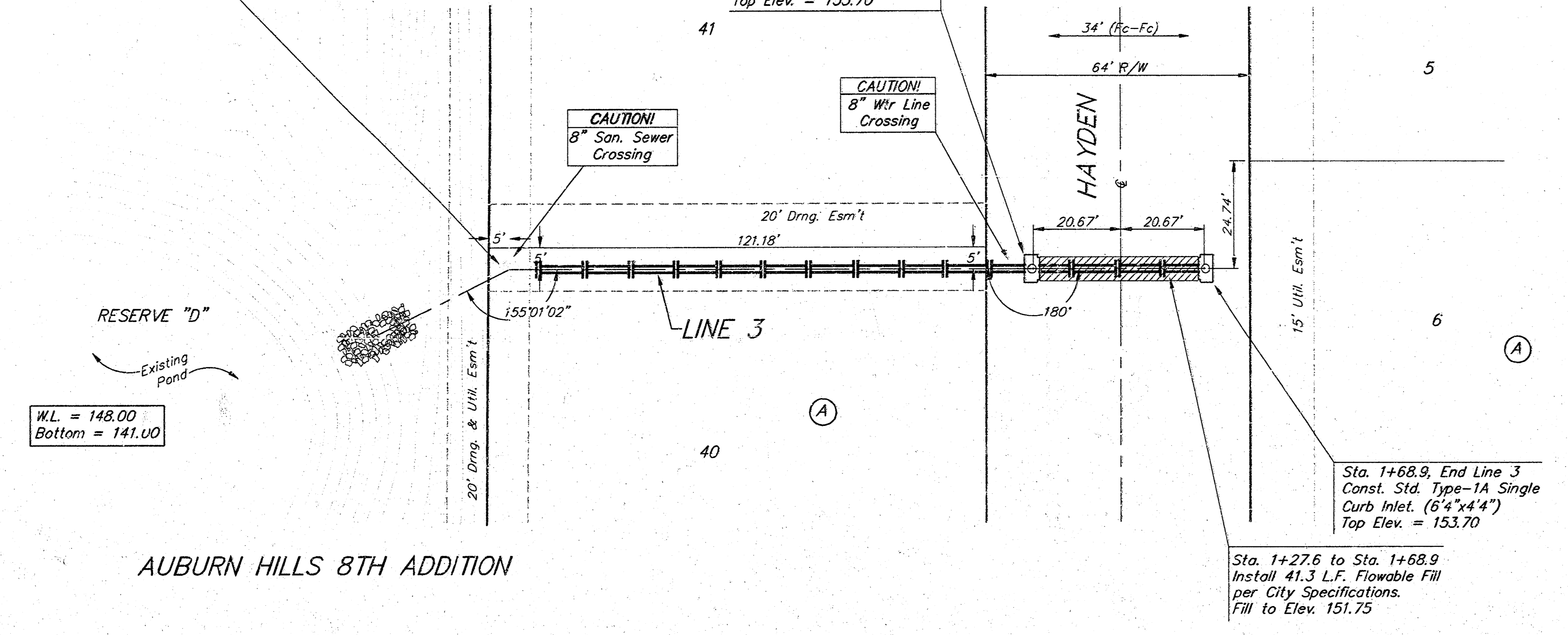


SCALE:
 1" = 20' HORIZONTAL
 1" = 5' VERTICAL
 • = IRON

Sta. 0+00, Begin Line 3
 Connect to Existing 18" Stub
 and Extend 18" Pipe West
 Contractor to Verify Depth
 and Location of Existing
 Stub Prior to Construction.

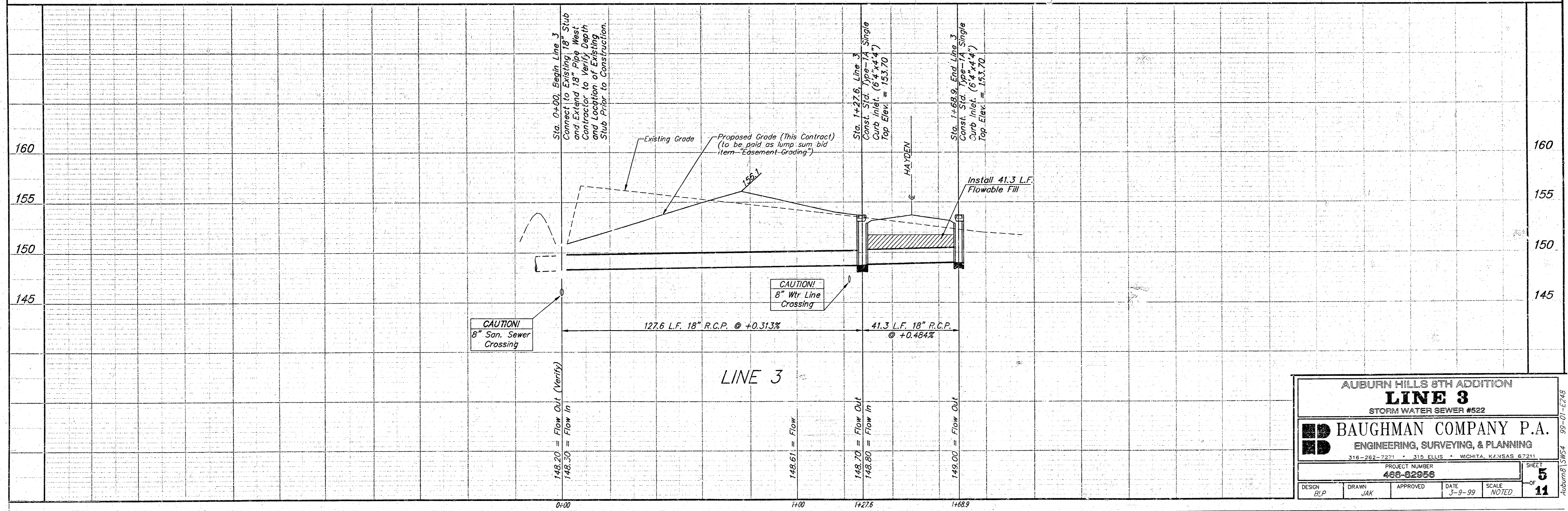
Sta. 1+27.6, Line 3
 Const. Std. Type-1A Single
 Curb Inlet. (6'4"x4'4")
 Top Elev. = 153.70

AUBURN HILLS 8TH ADDITION



W.L. = 148.00
 Bottom = 141.00

Sta. 1+68.9, End Line 3
 Const. Std. Type-1A Single
 Curb Inlet. (6'4"x4'4")
 Top Elev. = 153.70
 Sta. 1+27.6 to Sta. 1+68.9
 Install 41.3 L.F. Flowable Fill
 per City Specifications.
 Fill to Elev. 151.75



AUBURN HILLS 8TH ADDITION
LINE 3
 STORM WATER SEWER #522

BAUGHMAN COMPANY P.A.
 ENGINEERING, SURVEYING, & PLANNING
 316-262-7271 • 315 ELLIS • WICHITA, KANSAS 67211

PROJECT NUMBER
466-02956

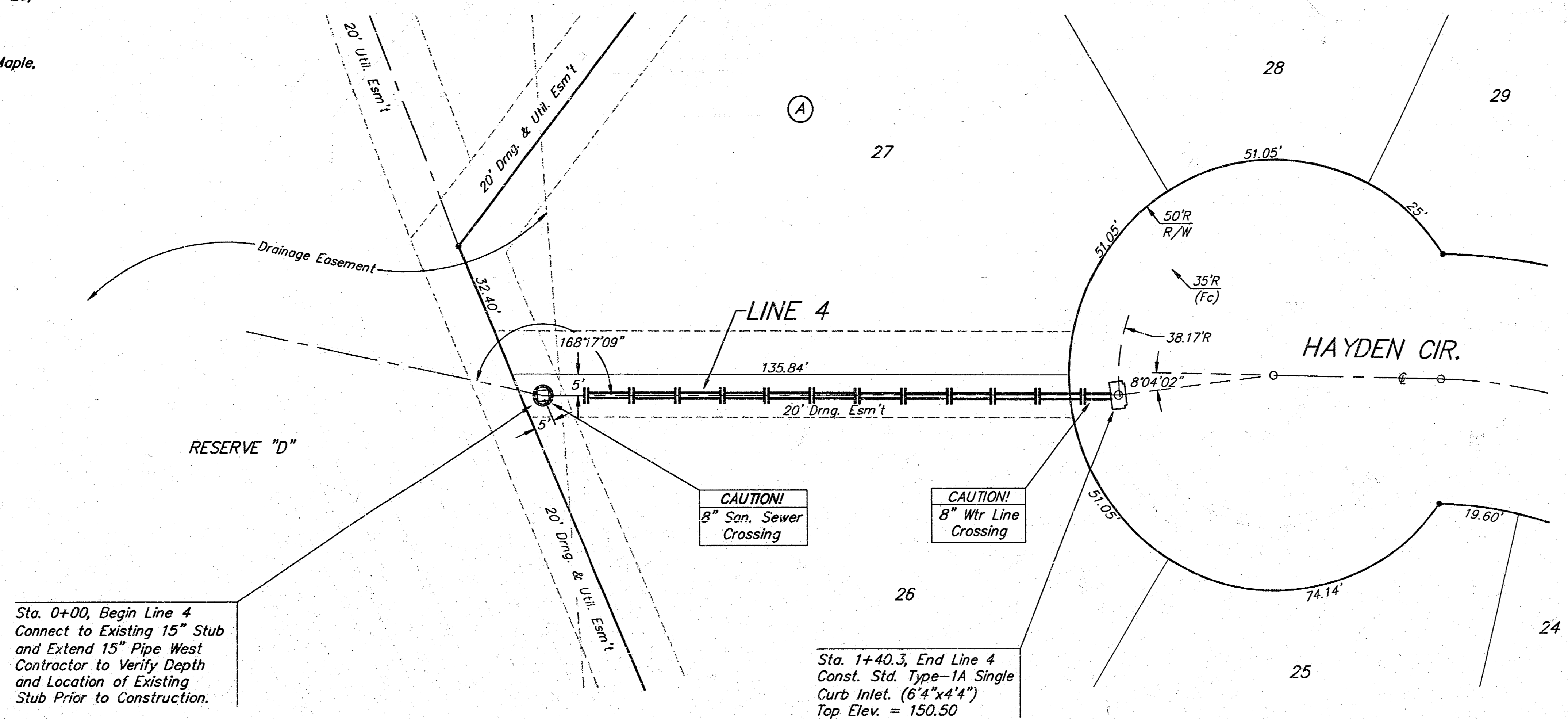
DESIGN BLP	DRAWN JAK	APPROVED	DATE 3-9-99
			SCALE NOTED

SHEET
5
 OF
11

Auburn Hills 8th Addition SW54 99-01-E248

BENCHMARKS:
 City Disc - 34.3' E. & 35' N. of
 S.W. Corner of N.W. 1/4, Sec. 25,
 T-27-S, R-2-W
 Elev. = 156.63 (City Datum)
 City Disc - 135th St. W. & Maple,
 30' N. & 15' E. CL. Both.
 Elev. = 150.20 (City Datum)

AUBURN HILLS 8TH ADDITION



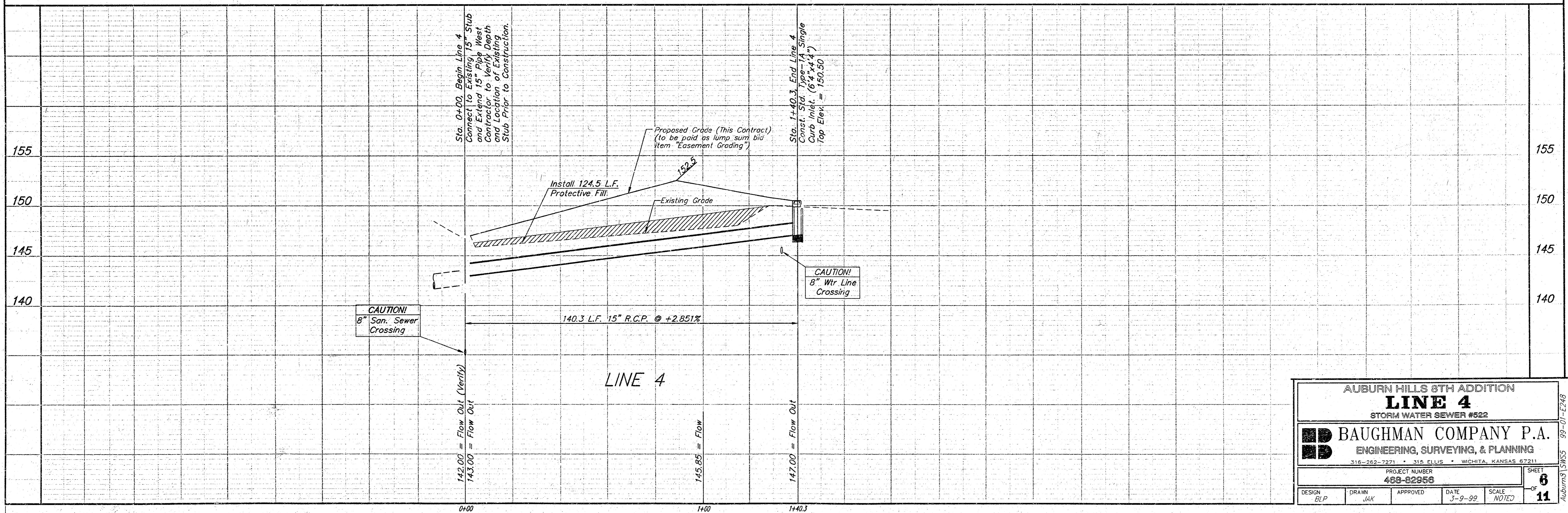
SCALE:
 1" = 20' HORIZONTAL
 1" = 5' VERTICAL
 • = IRON

Sta. 0+00, Begin Line 4
 Connect to Existing 15" Stub
 and Extend 15" Pipe West
 Contractor to Verify Depth
 and Location of Existing
 Stub Prior to Construction.

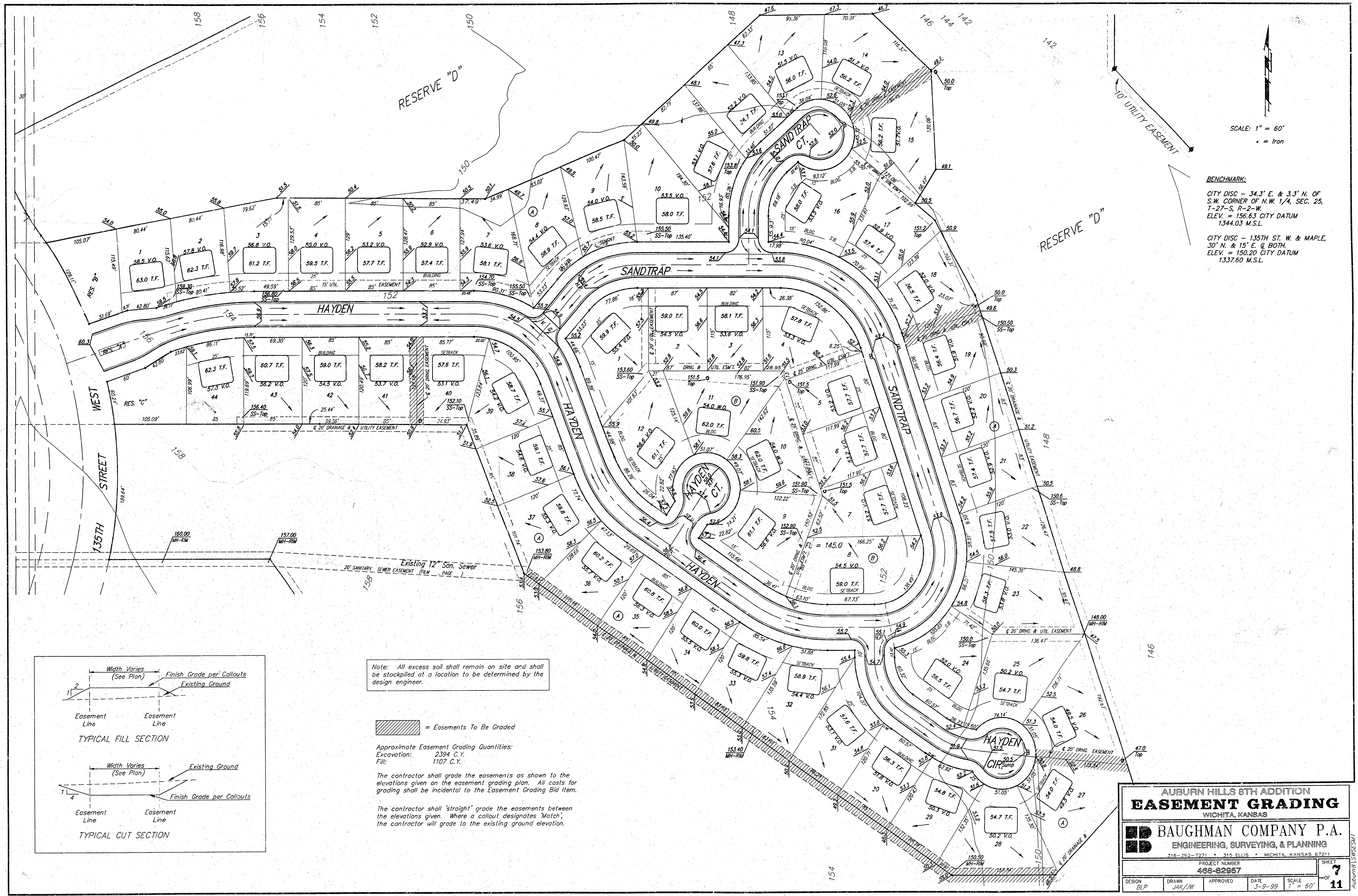
Sta. 1+40.3, End Line 4
 Const. Std. Type-1A Single
 Curb Inlet. (6'4"x4'4")
 Top Elev. = 150.50

Note: Protective Fill to be
 Placed and Compacted per
 City Specs Prior to Storm
 Water Sewer Installation.

AUBURN HILLS 8TH ADDITION

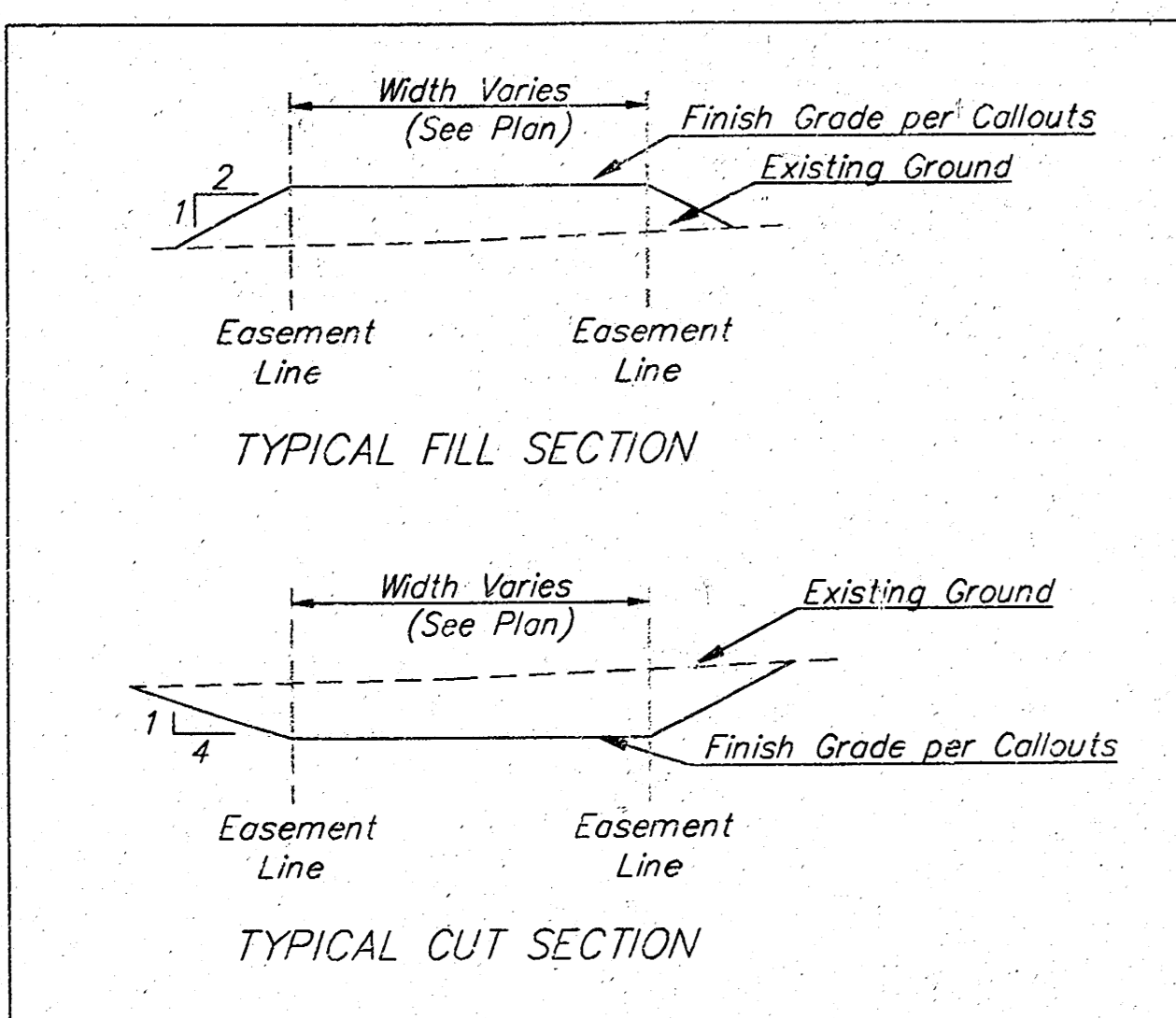


AUBURN HILLS 8TH ADDITION			
LINE 4			
STORM WATER SEWER #522			
BAUGHMAN COMPANY P.A.			
ENGINEERING, SURVEYING, & PLANNING			
316-262-7221 • 315 ELLIS • WICHITA, KANSAS 67211			
PROJECT NUMBER		SHEET	
468-82956		6	
DESIGN	DRAWN	APPROVED	DATE
BLP	JAK		3-9-99
		SCALE	NOTED
			11



SCALE: 1" = 60'
 • = Iron

BENCHMARK:
 CITY DISC - 34.3' E. & 3.3' N. OF
 S.W. CORNER OF N.W. 1/4, SEC. 25,
 T-27-S, R-2-W.
 ELEV. = 156.63 CITY DATUM
 1344.03 M.S.L.
 CITY DISC - 135TH ST. W. & MAPLE,
 30' N. & 15' E. @ BOTH.
 ELEV. = 150.20 CITY DATUM
 1337.60 M.S.L.



Note: All excess soil shall remain on site and shall be stockpiled at a location to be determined by the design engineer.

= Easements To Be Graded

Approximate Easement Grading Quantities:
 Excavation: 2394 C.Y.
 Fill: 1107 C.Y.

The contractor shall grade the easements as shown to the elevations given on the easement grading plan. All costs for grading shall be incidental to the Easement Grading Bid Item.

The contractor shall 'straight' grade the easements between the elevations given. Where a callout designates 'Match', the contractor will grade to the existing ground elevation.

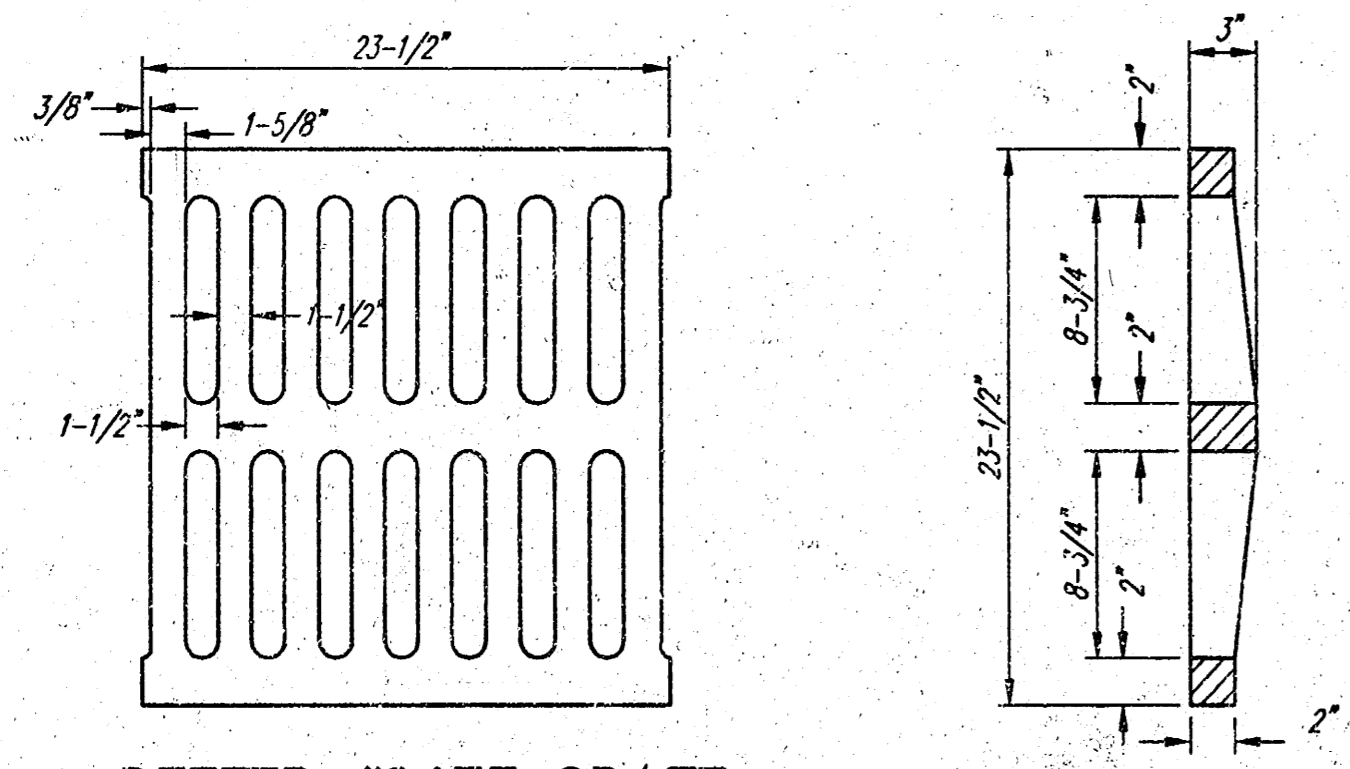
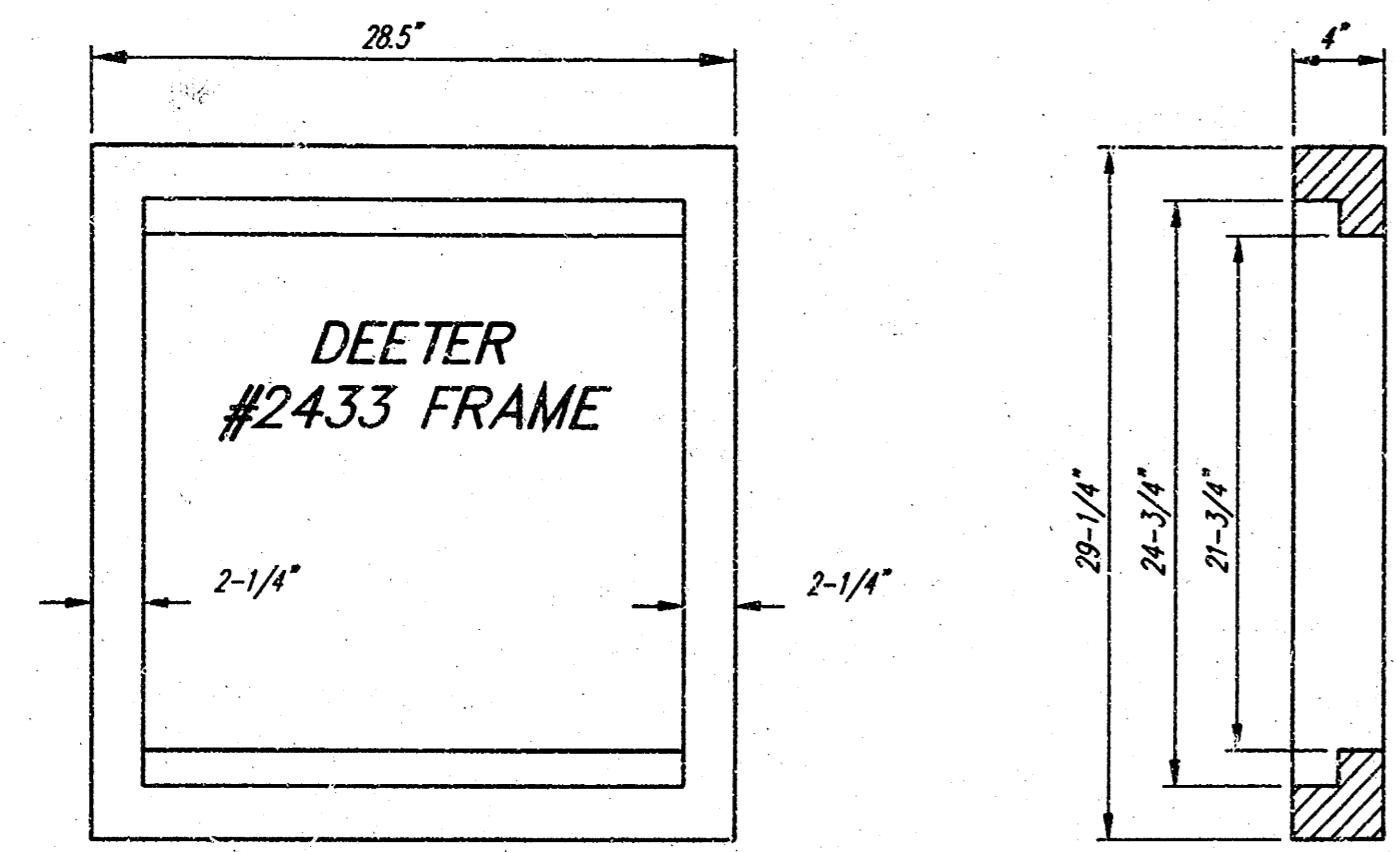
AUBURN HILLS 8TH ADDITION
EASEMENT GRADING
 WICHITA, KANSAS

BAUGHMAN COMPANY P.A.
 ENGINEERING, SURVEYING, & PLANNING
 316-262-7271 • 315 ELLIS • WICHITA, KANSAS 67211

PROJECT NUMBER: **488-82957**

DESIGN: BLP	DRAWN: JAK/NW	APPROVED:	DATE: 3-9-99	SCALE: 1" = 60'	SHEET: 7 OF 11
-------------	---------------	-----------	--------------	-----------------	------------------------------

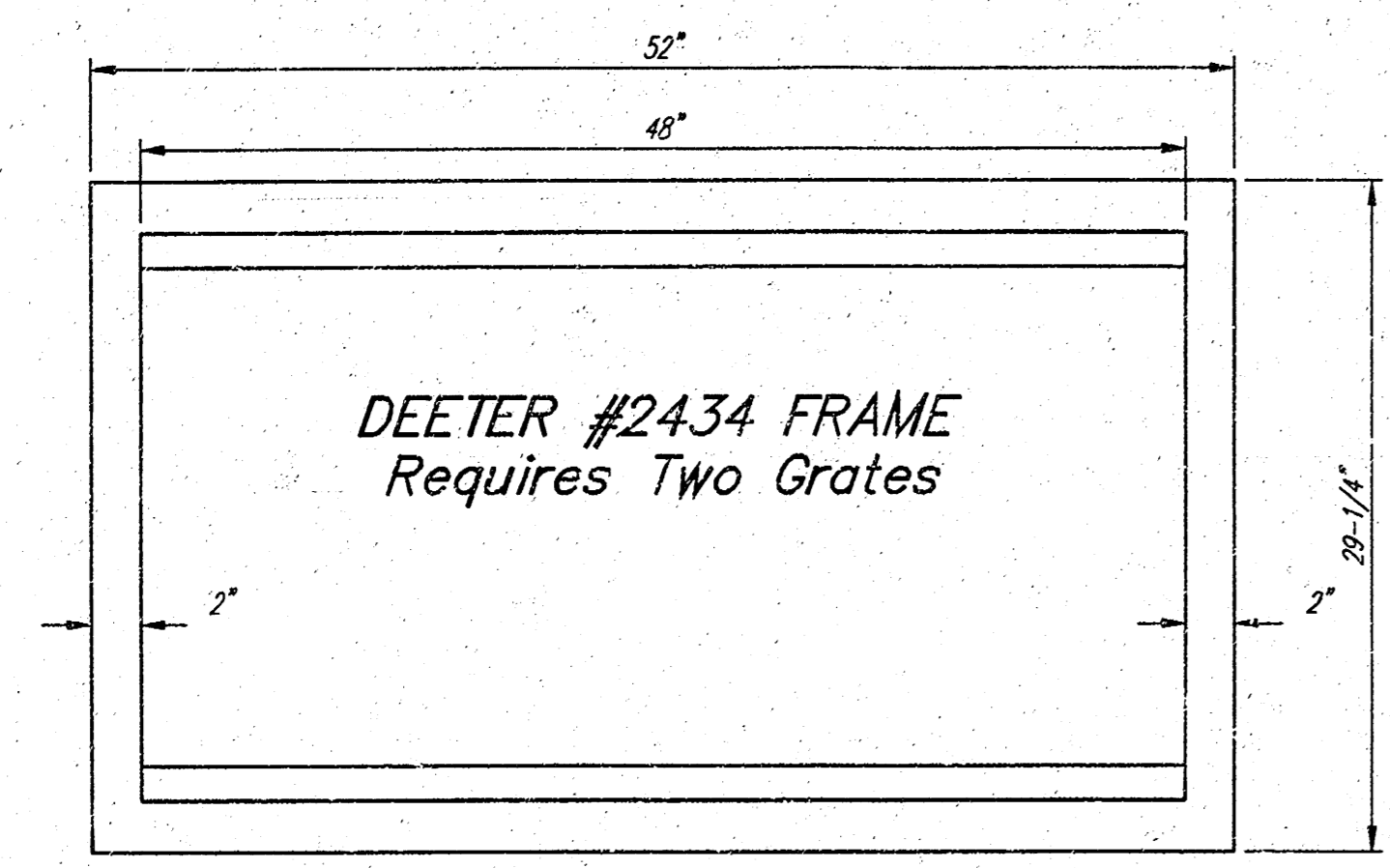
Auburn Hills 8th Addition



DEETER #2433 GRATE

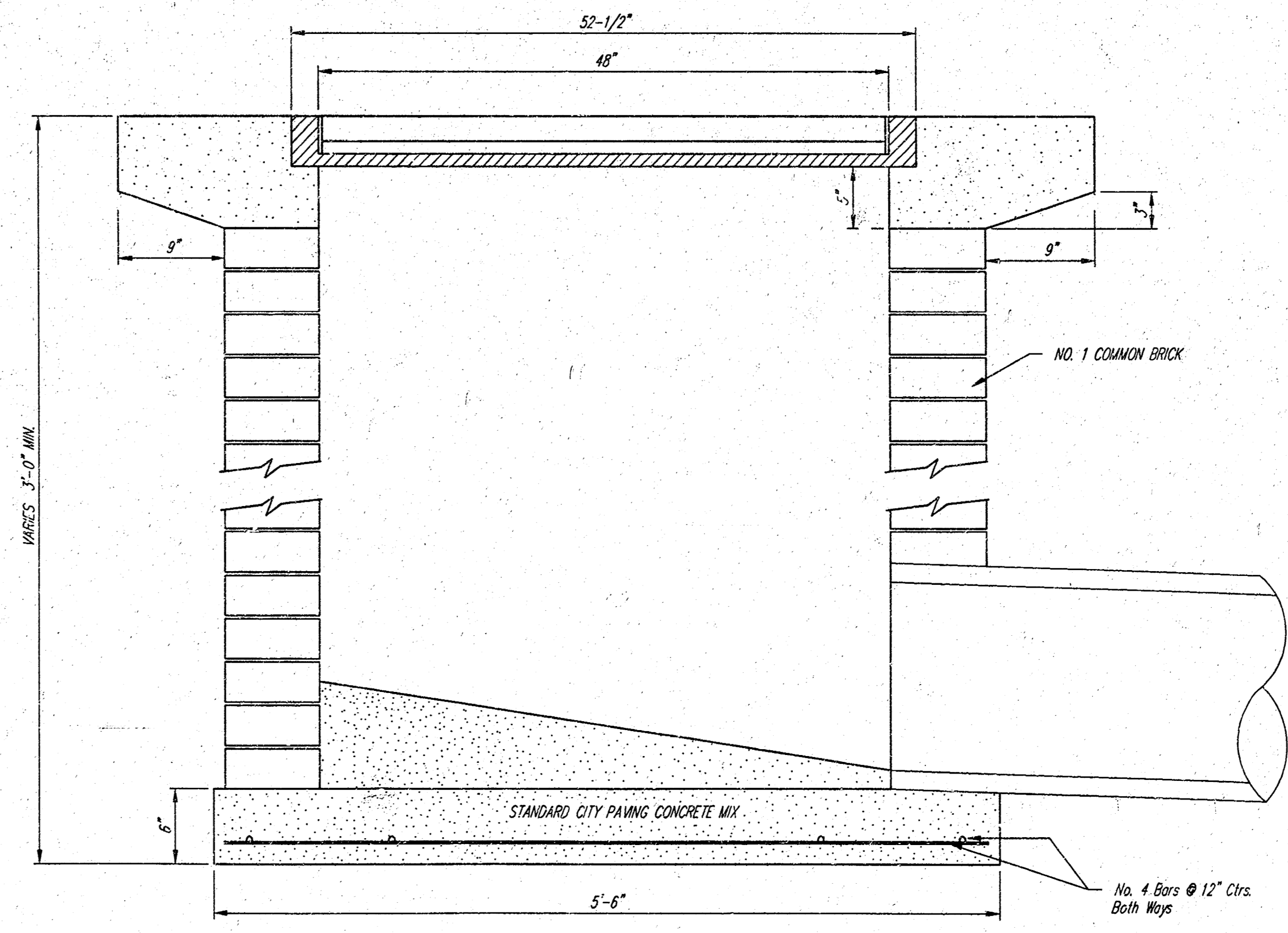
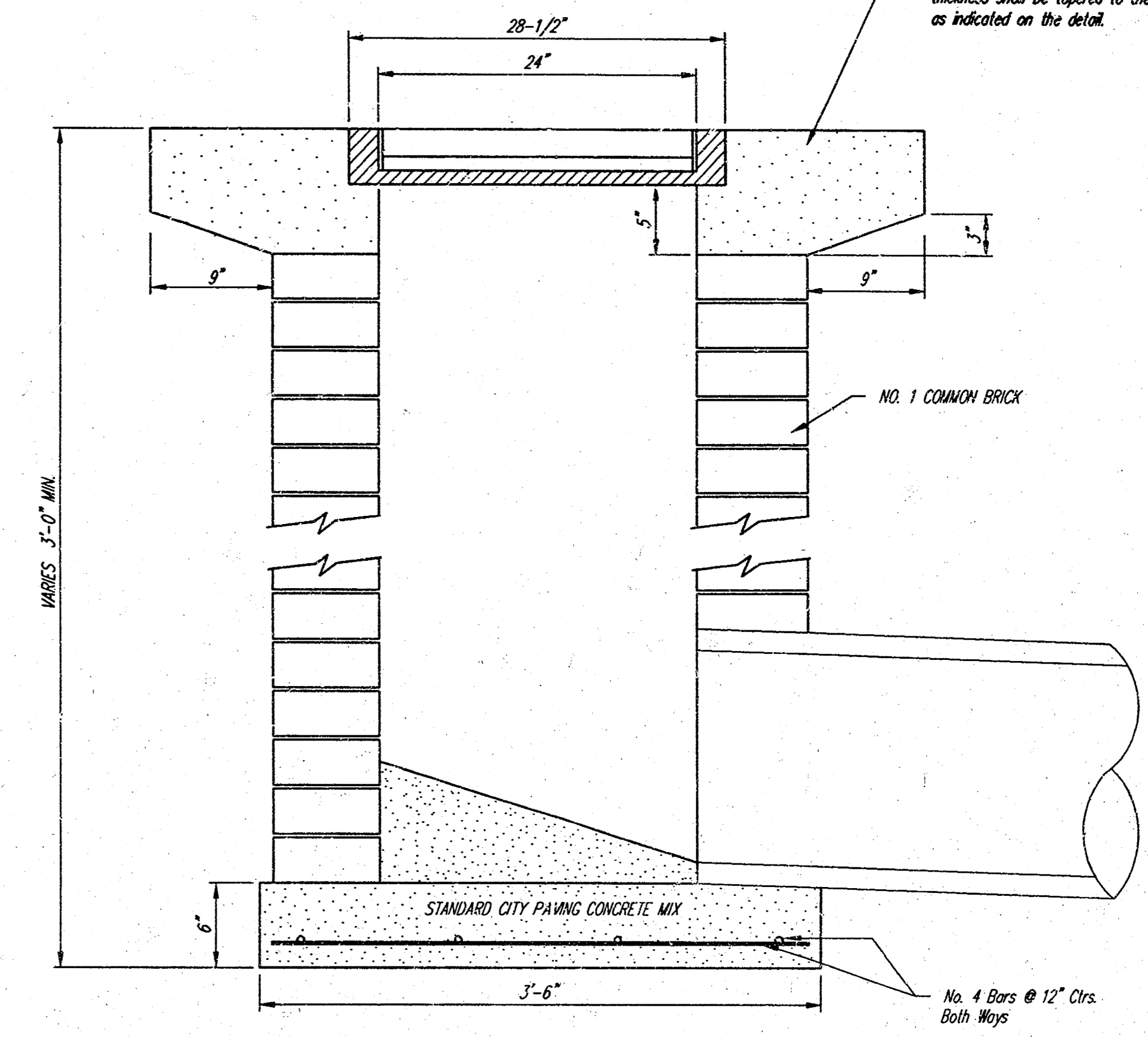
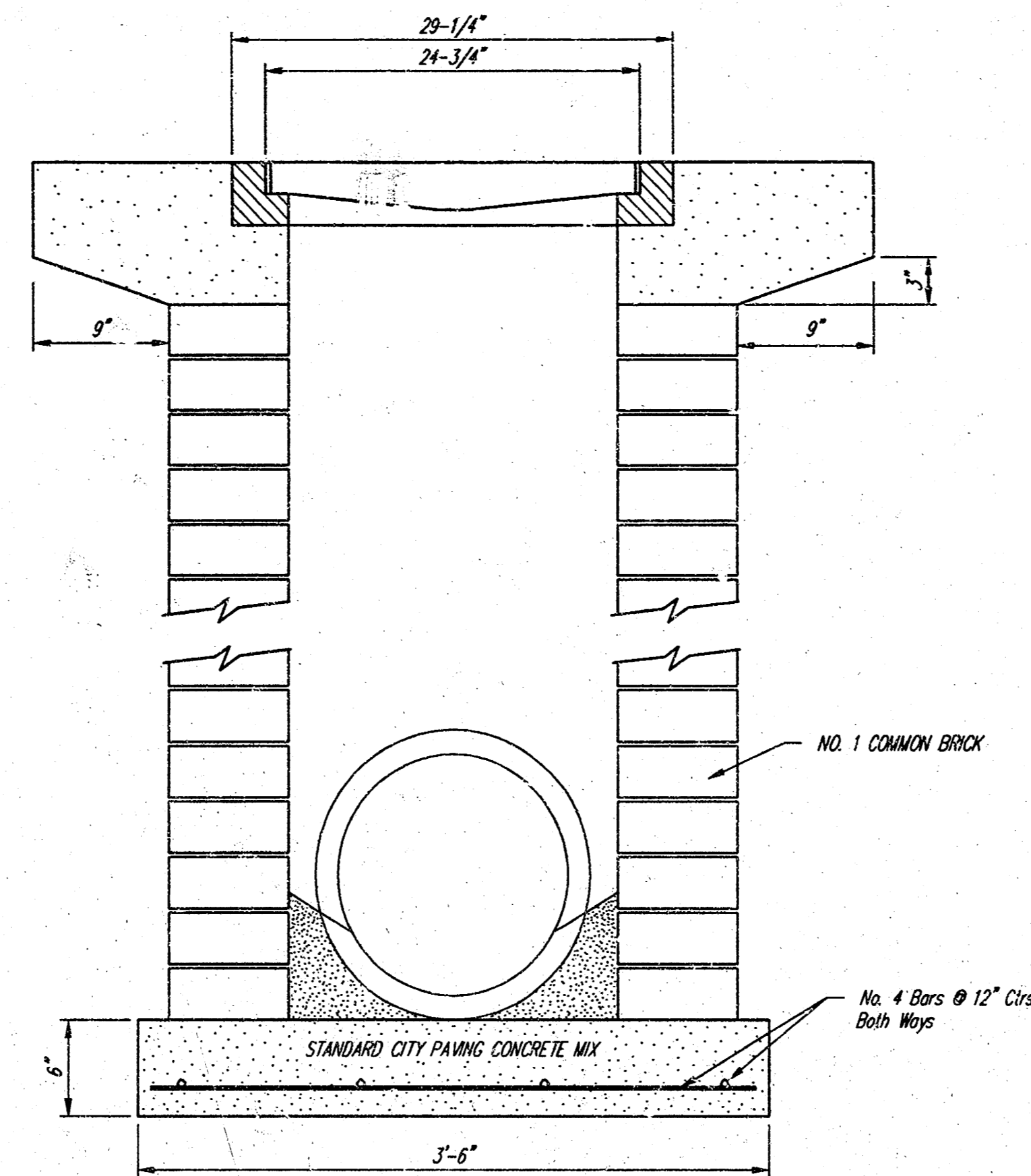
24" x 24" Frame and Grate Detail

NOTE: Grates shall be imprinted on the top surface with "CITY OF WICHITA" using letters of least 1" in height. Other marking methods may be approved by the engineer.



DEETER #2434 FRAME
Requires Two Grates

Double 24" x 24" Frame Detail



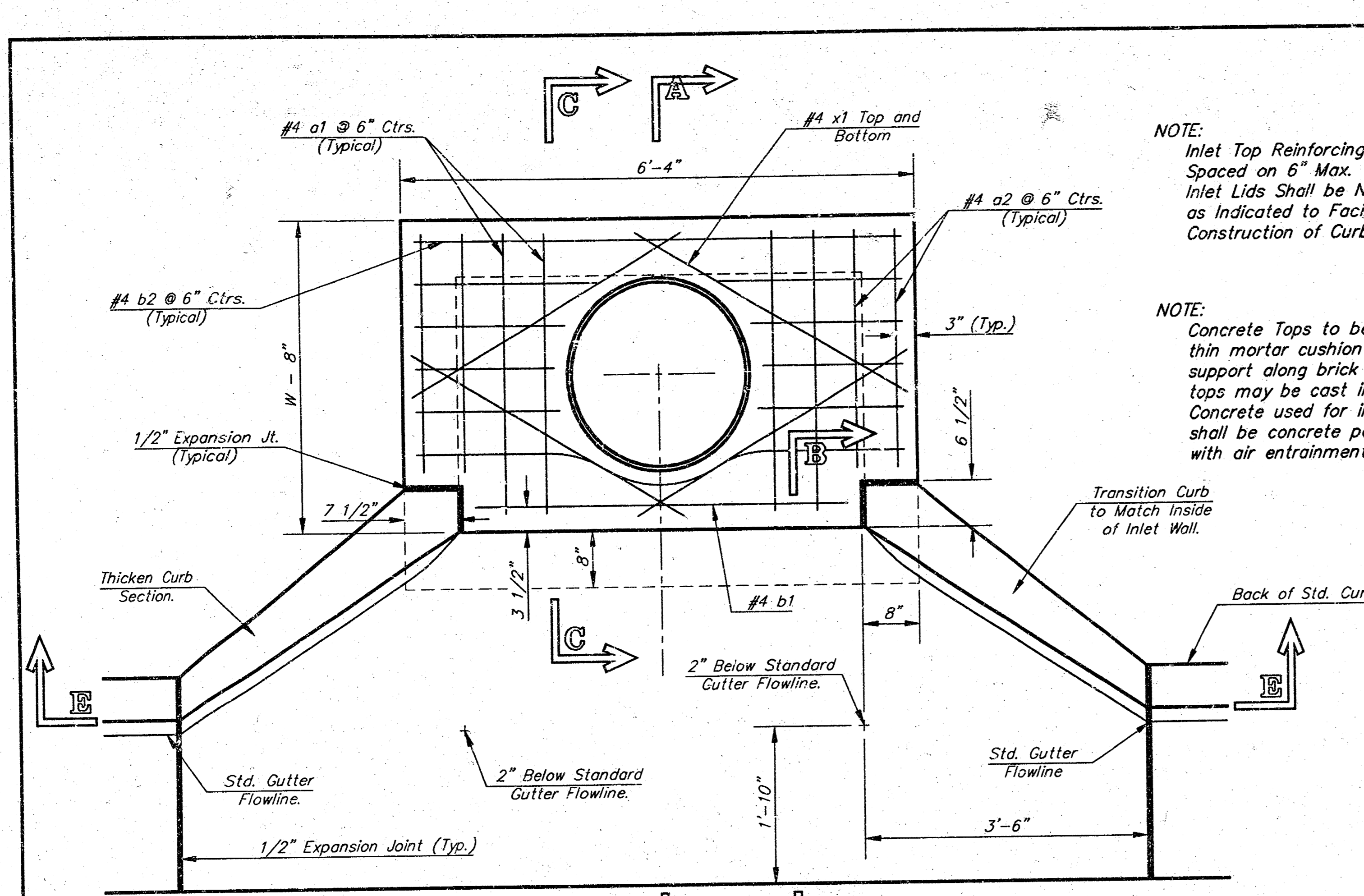
City of Wichita Standard
Drop Inlet

BAUGHMAN COMPANY P.A.
ENGINEERING, SURVEYING, & PLANNING
316-362-7271 • 315 ELLIS • WICHITA, KANSAS 67211

PROJECT NUMBER
488-82958

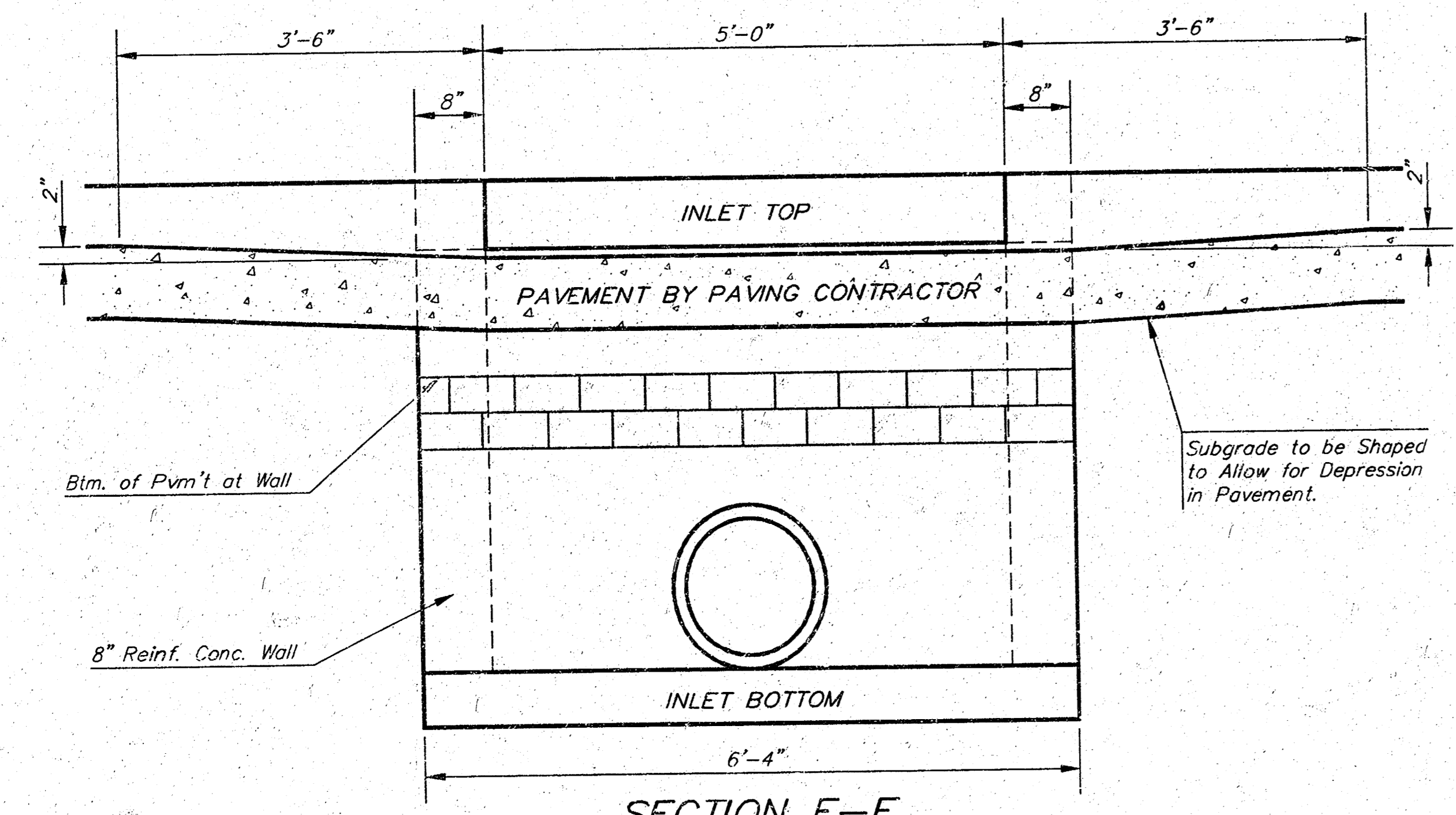
DESIGN: C.O.W. DRAWN: Staff APPROVED: DATE: SCALE: NONE

SHEET **8** OF **11**

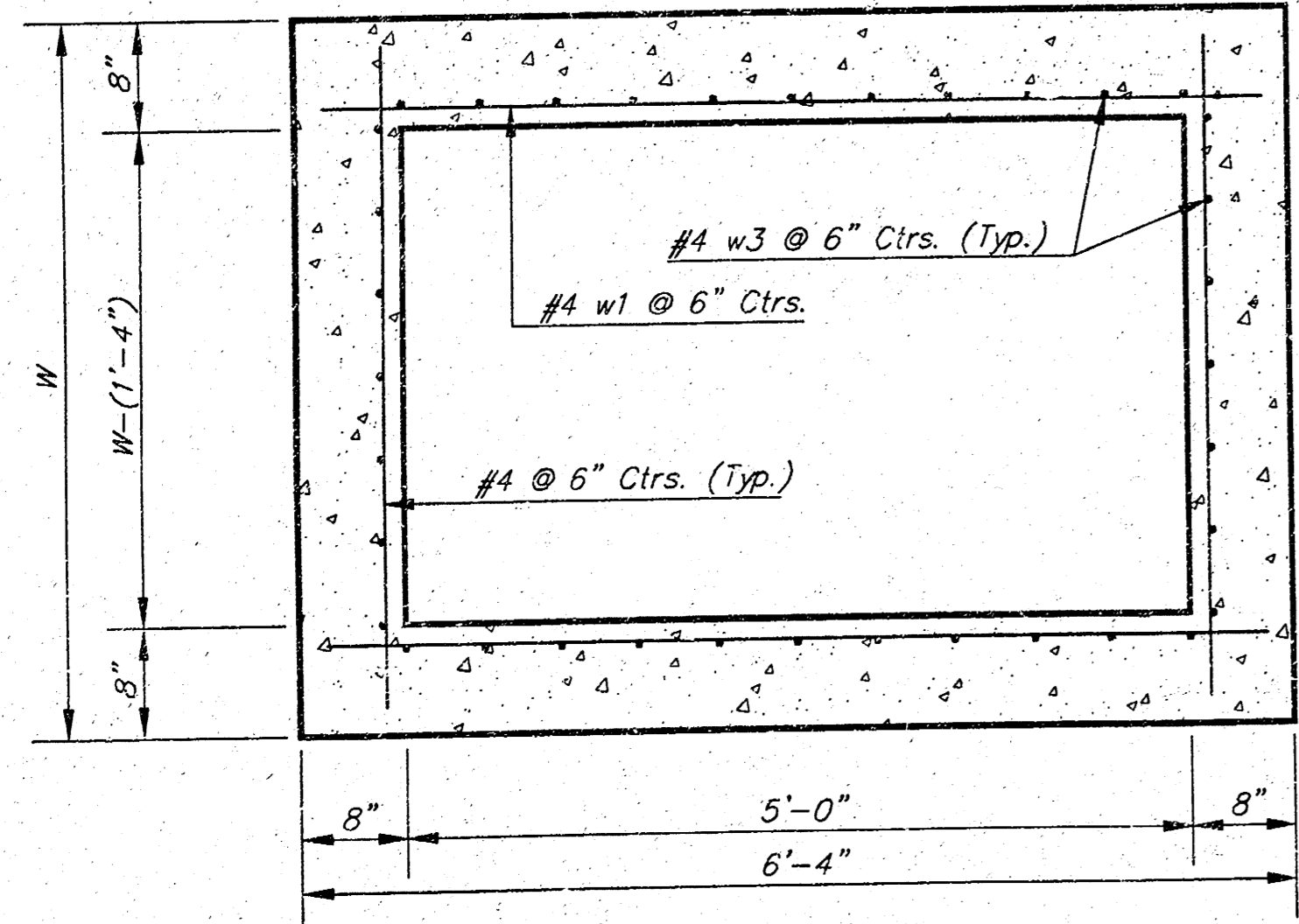


NOTE: Expansion Joint Only in Curb Area With Concrete Pavement.

PLAN



SECTION E-E



SECTION D-D

NOTE: Inlet Top Reinforcing shall be Spaced on 6" Max. Centers. Inlet Lids Shall be Notched Out as Indicated to Facilitate Construction of Curb.

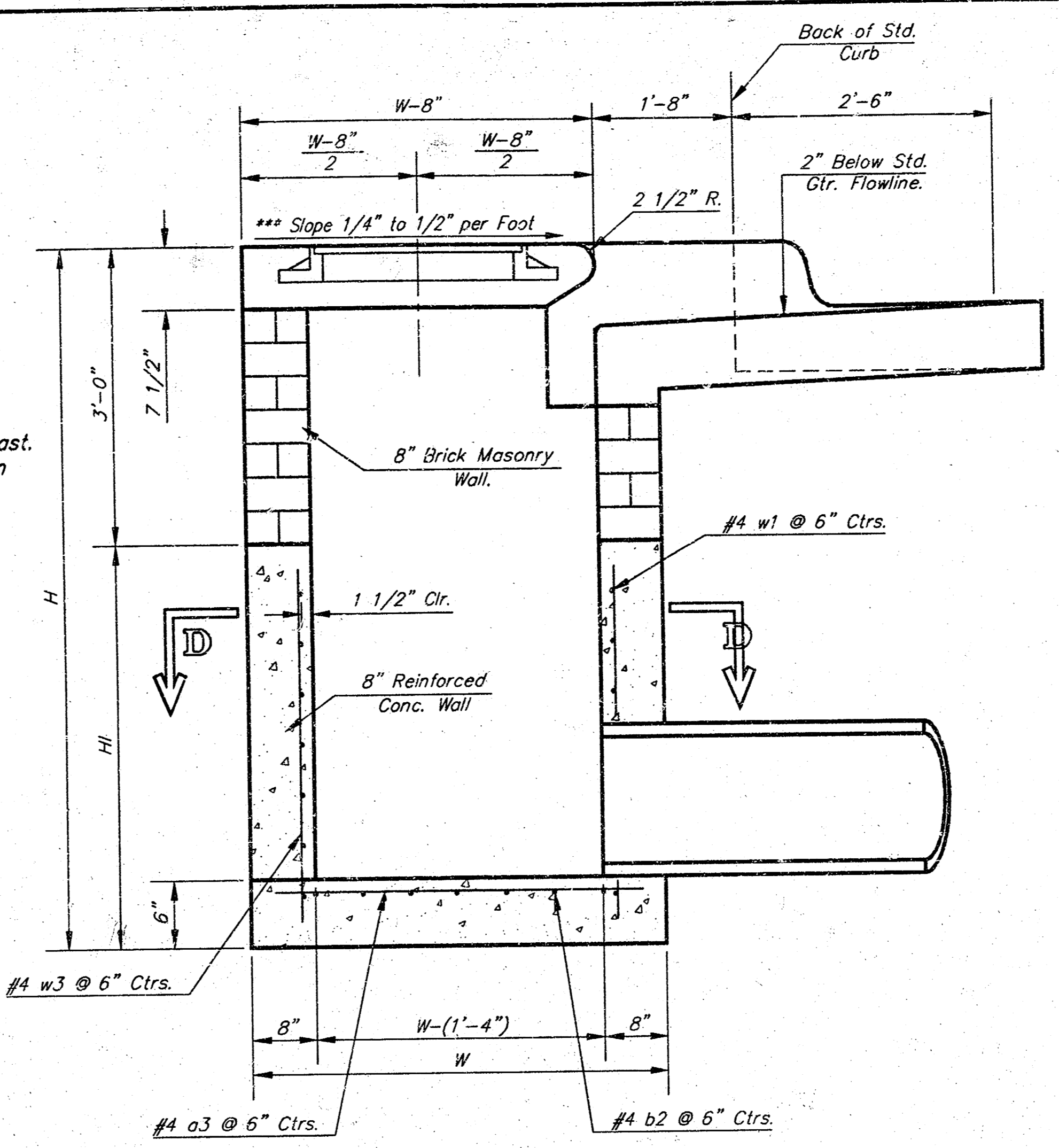
NOTE: Concrete Tops to be installed on thin mortar cushion to insure full support along brick walls. Concrete tops may be cast in place or precast. Concrete used for inlet construction shall be concrete pavement mix with air entrainment.

NOTE: Contractor shall have the option of constructing 8" brick masonry walls between the concrete inlet base and top on this inlet when W=6'-4" and H=7'-0" or less.

Additional curb and gutter construction necessary to connect set-back inlet to pavement will be paid for at the unit price bid for each inlet hookup.

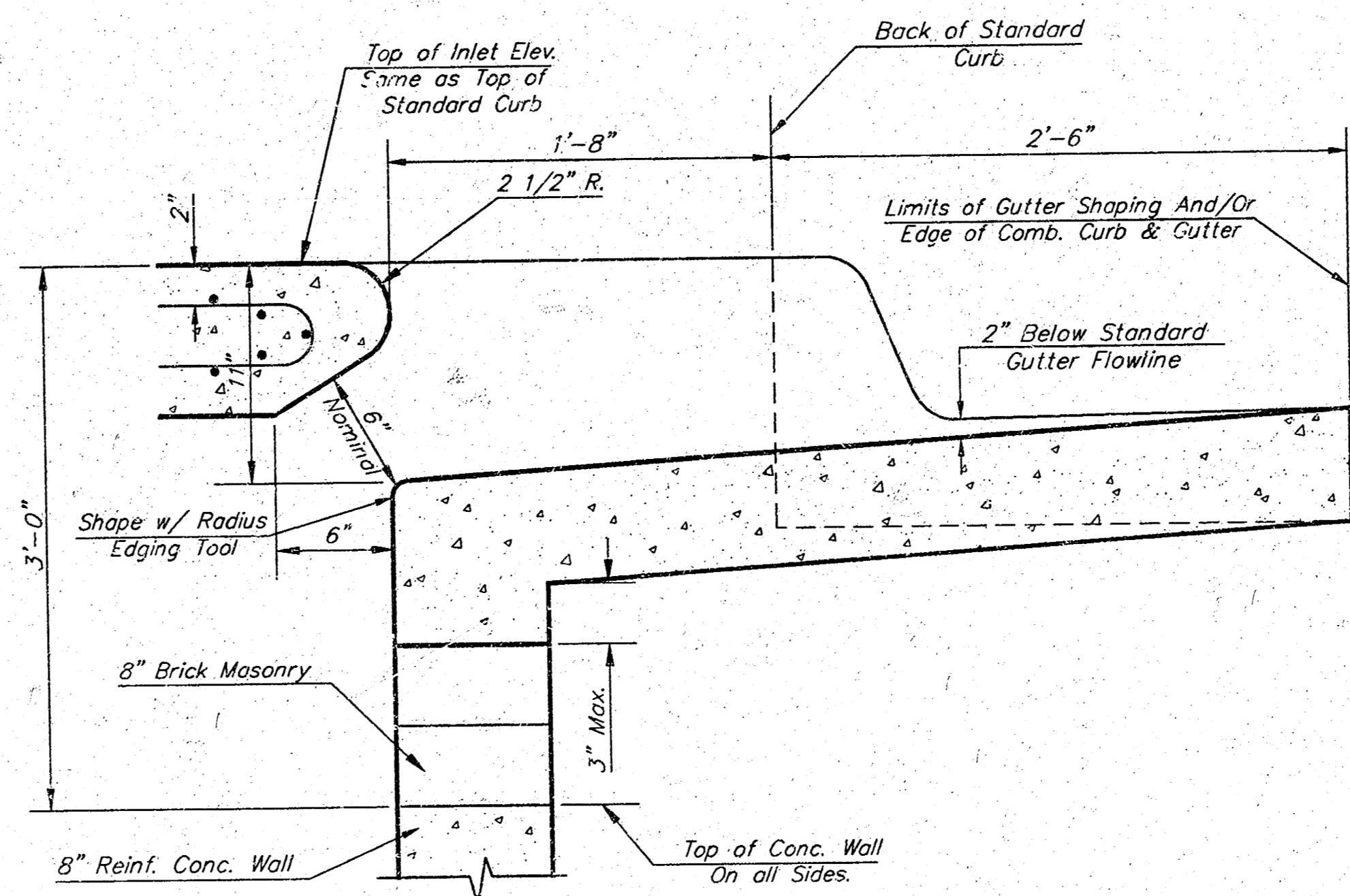
Inlet invert shall be shaped with 8 sack sand mix concrete to create low channels and to increase hydraulic efficiency such that the inlet will be self-cleaning between all inlet and/or outlet pipes.

The ends of all pipes installed in inlets shall be cut off flush with the inside face of the inlet wall.



SECTION A-A

NOTE: Slope of Inlet tops to Match Sidewalk or Parking Slopes within Limits Indicated.

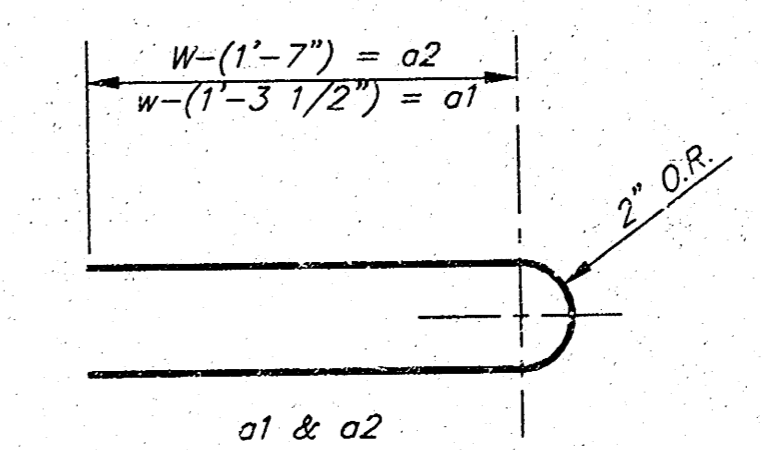


SECTION B-B

PRECAST SLAB AND FLOOR REINFORCING											
MARK	SIZE	W = 4'-4"		W = 5'-4"		W = 6'-4"		W = 7'-4"		W = 8'-4"	
		NO.	LENGTH	NO.	LENGTH	NO.	LENGTH	NO.	LENGTH	NO.	LENGTH
a1	#4	6	6'-7"	6	8'-7"	6	10'-7"	6	12'-7"	6	14'-7"
a2	#4	4	6'-0"	4	8'-0"	4	10'-0"	4	12'-0"	4	14'-0"
a3	#4	13	4'-1"	13	5'-1"	13	6'-1"	13	7'-1"	13	8'-1"
b1	#4	1	4'-9"	1	4'-9"	1	4'-9"	1	4'-9"	1	4'-9"
b2	#4	23	6'-1"	29	6'-1"	35	6'-1"	41	6'-1"	47	6'-1"
x1	#4	8	3'-10"	8	4'-2"	8	4'-6"	8	4'-10"	8	5'-2"

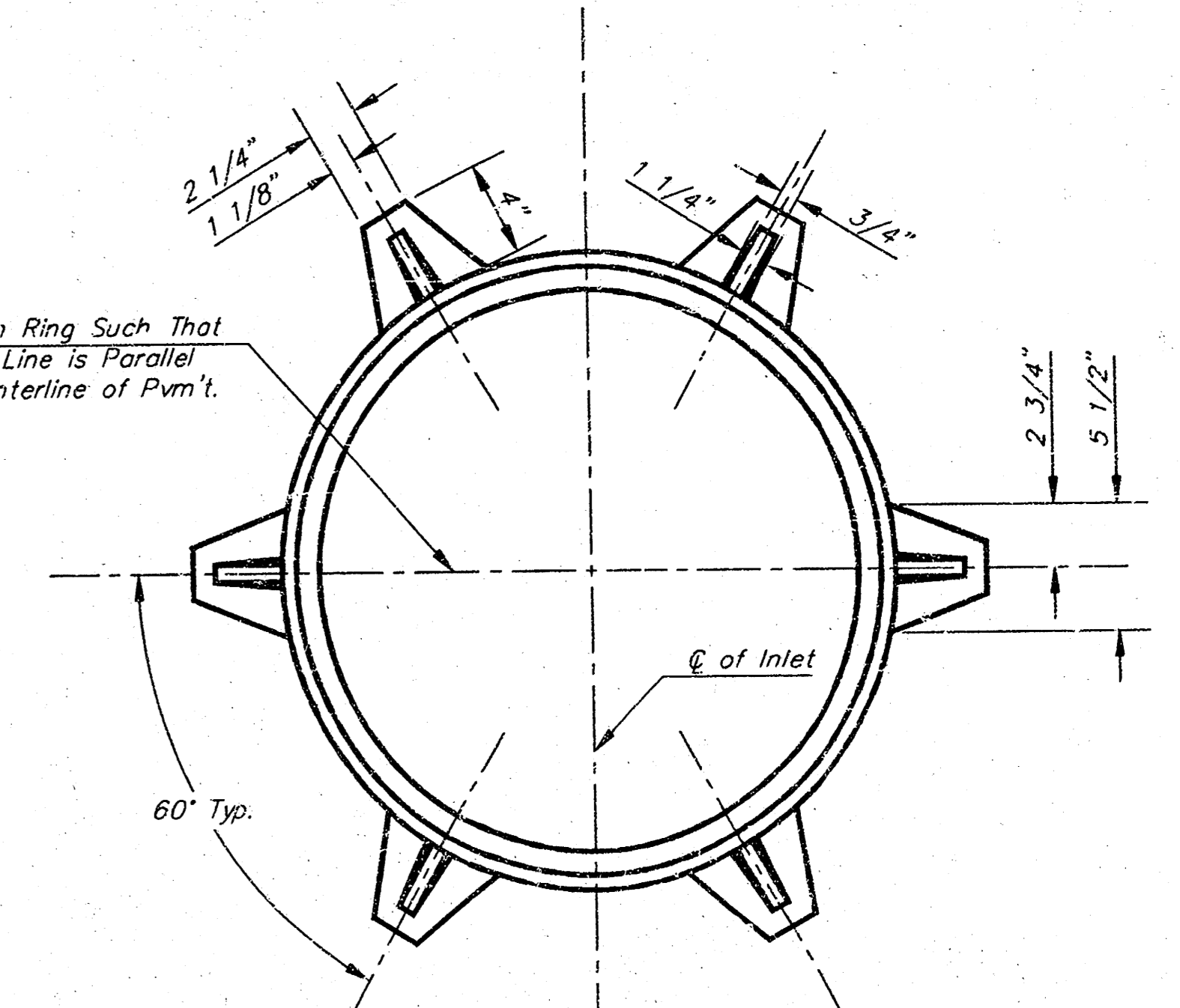
WALL REINFORCING											
MARK	SIZE	W = 4'-4"		W = 5'-4"		W = 6'-4"		W = 7'-4"		W = 8'-4"	
		NO.	LENGTH	NO.	LENGTH	NO.	LENGTH	NO.	LENGTH	NO.	LENGTH
w1	#4	1	6'-1"	1	6'-1"	1	6'-1"	1	6'-1"	1	6'-1"
w2	#4	1	4'-1"	1	5'-1"	1	6'-1"	1	7'-1"	1	8'-1"
w3	#4	32	3"	36	3"	40	3"	44	3"	48	3"

* Field Bend or Cut Reinforcing as Required for Clearance.
 ① 4 (H1 - 12") (H1 - 21") Rounded down to nearest 0.5"
 ② H1 - 3"



BENDING DIAGRAM

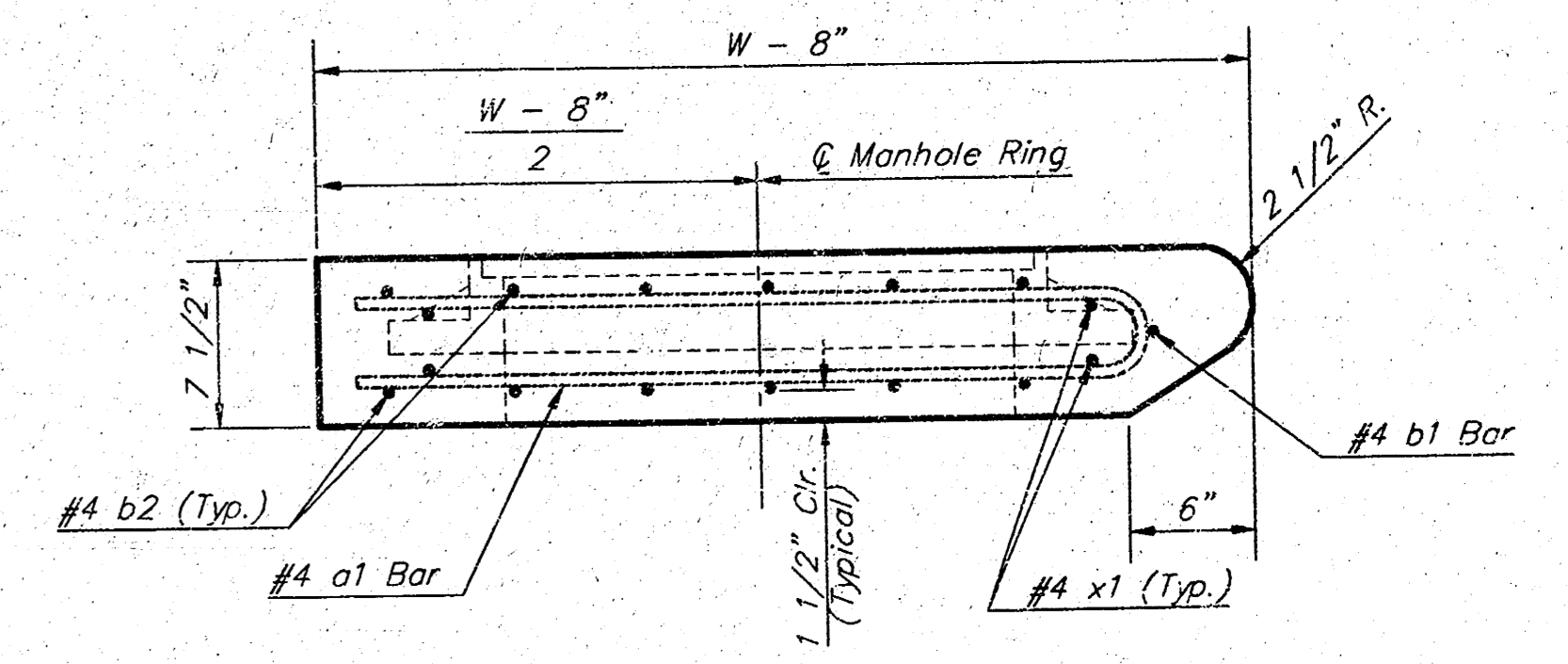
STANDARD CURB INLET PRECAST TOPS			
W	PRE-CAST TOP SIZE	PIPE SIZE	CL. NO. CONC.
4'-4"	3'-8" x 6'-4" x 7 1/2"	21" & SMALLER	0.38±
5'-4"	4'-8" x 6'-4" x 7 1/2"	24" & 30"	0.51±
6'-4"	5'-8" x 6'-4" x 7 1/2"	36" & 42"	0.64±
7'-4"	6'-8" x 6'-4" x 7 1/2"	48" & 54"	0.77±
8'-4"	7'-8" x 6'-4" x 7 1/2"	60" & 66"	0.90±



MANHOLE RING AND COVER

Weight = 180 Lbs.

*See City of Wichita Standard Manhole Ring and Cover Detail Sheet for Cover Details to Be Used With Inlet Frame.



SECTION A-A

Revised - Feb. 16, 1989

CITY OF WICHITA STANDARD TYPE 1A
Curb Inlet Details
 INLET OPENING = 6" X 7'-0"

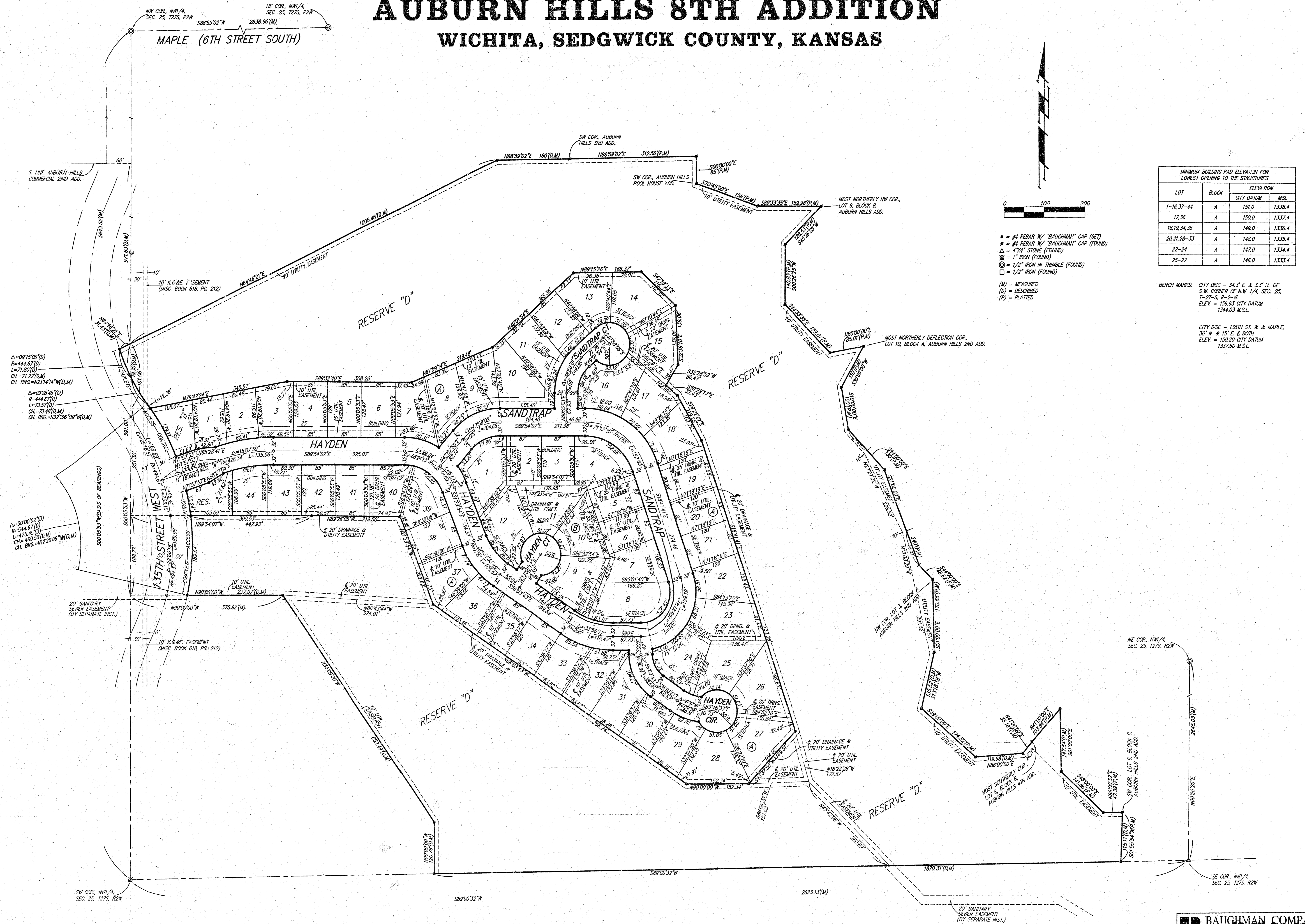
BAUGHMAN COMPANY P.A.
 ENGINEERING, SURVEYING, & PLANNING
 316-262-2271 • 315 ELLIS • WICHITA, KANSAS 67211

PROJECT NUMBER
468-82956

DESIGN: C.O.W. DRAWN: Staff APPROVED: DATE: SCALE: None SHEET: **9** OF **11**

AUBURN HILLS 8TH ADDITION

WICHITA, SEDGWICK COUNTY, KANSAS



ASHOCE: JUBERLAT.DWG Tue Jun 12 10:43:33 1999