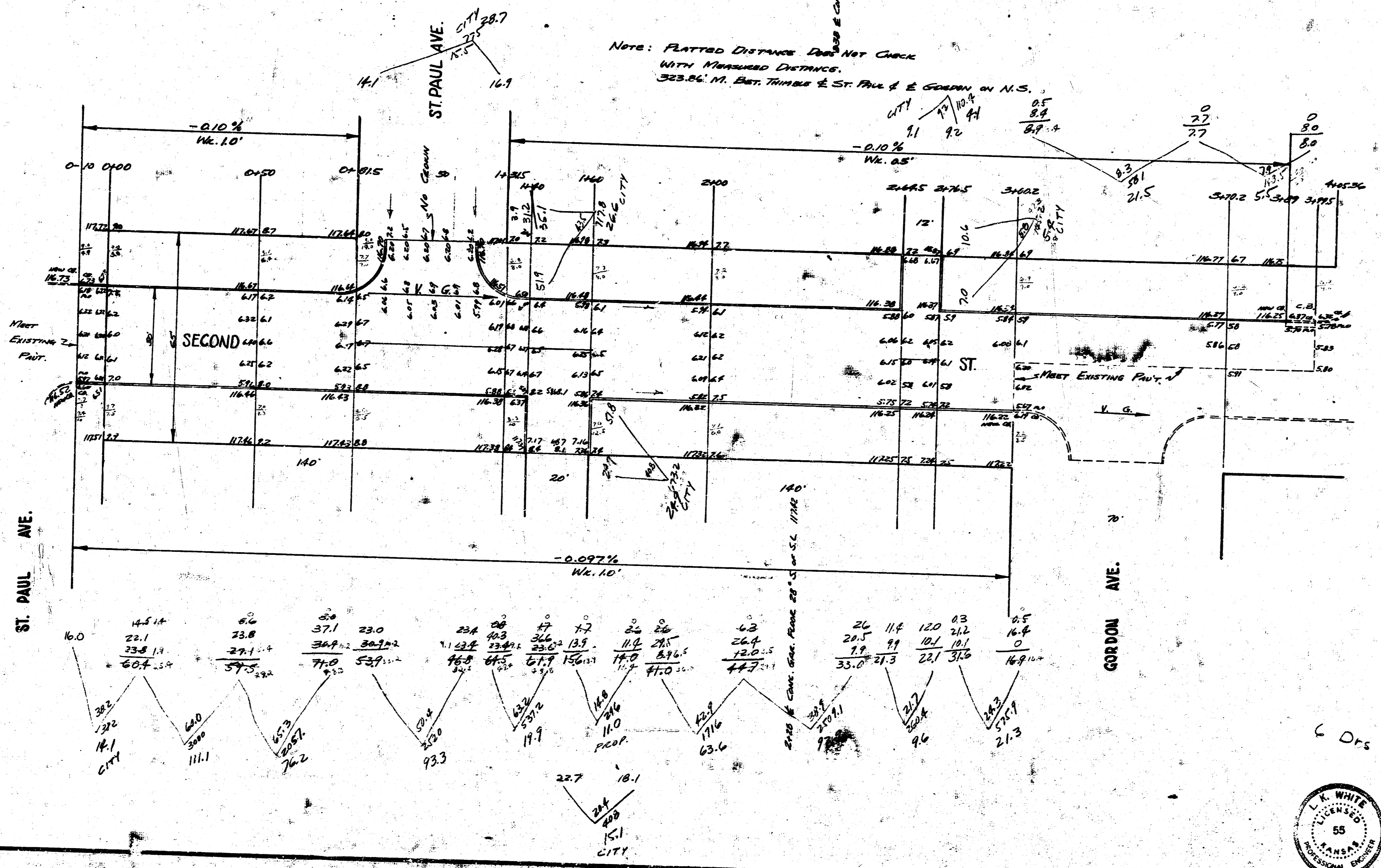


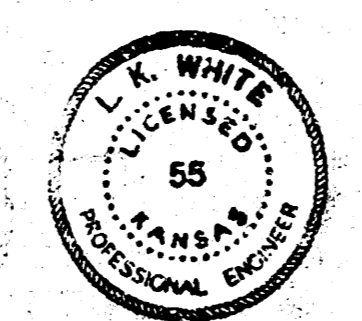
B.M. 11789 S.W. Cor. Conv. Patch No. 4388 No. Garden
 B.M. 11668 "G" in Ground E.S. St. Paul So. - 1° So. of So. end Rad. S.E. Cor. St. Paul & 2nd

NOTE: PLATTED DISTANCE DOES NOT CORRELATE WITH MEASURED DISTANCE.
 323.66' N. B.M. THURSDAY & ST. PAUL & E. GARDEN ON N.S.

PROP.	CITY
111.1	28.7
76.2	20.6
93.3	28.9
14.9	15.1
11.0	4.1
6.4	5.4
92.9	104.3
7.6	410.6
21.3	55
21.5	578.5
55	
523.9	
410.16	
578.5	



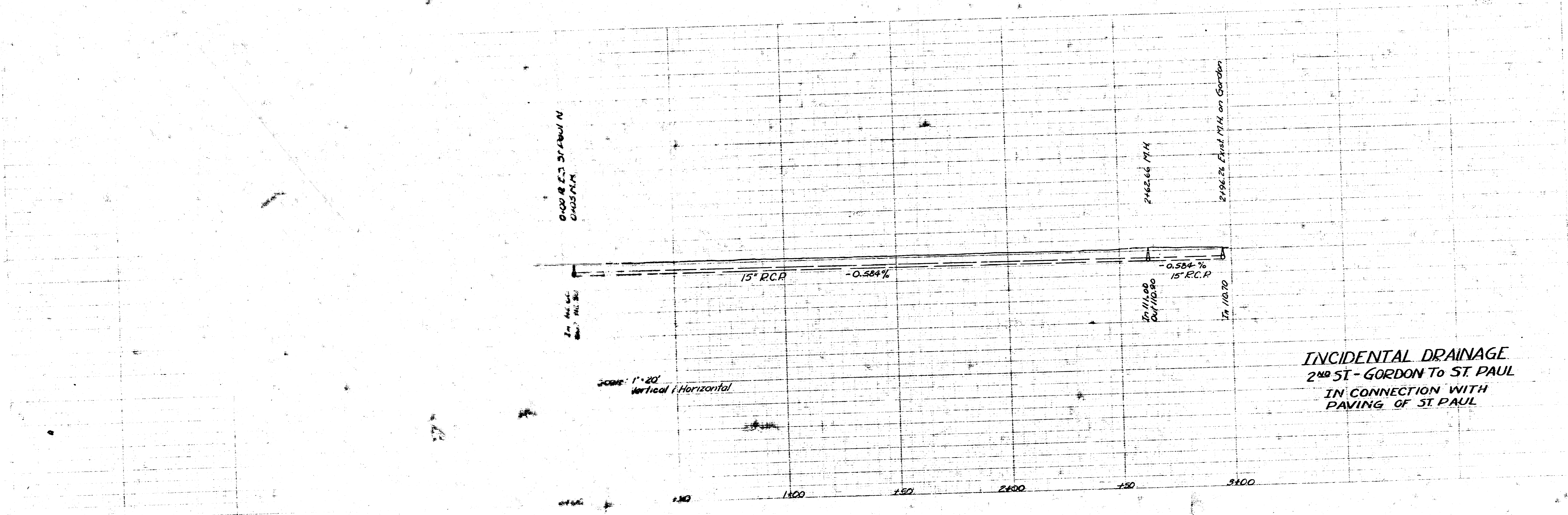
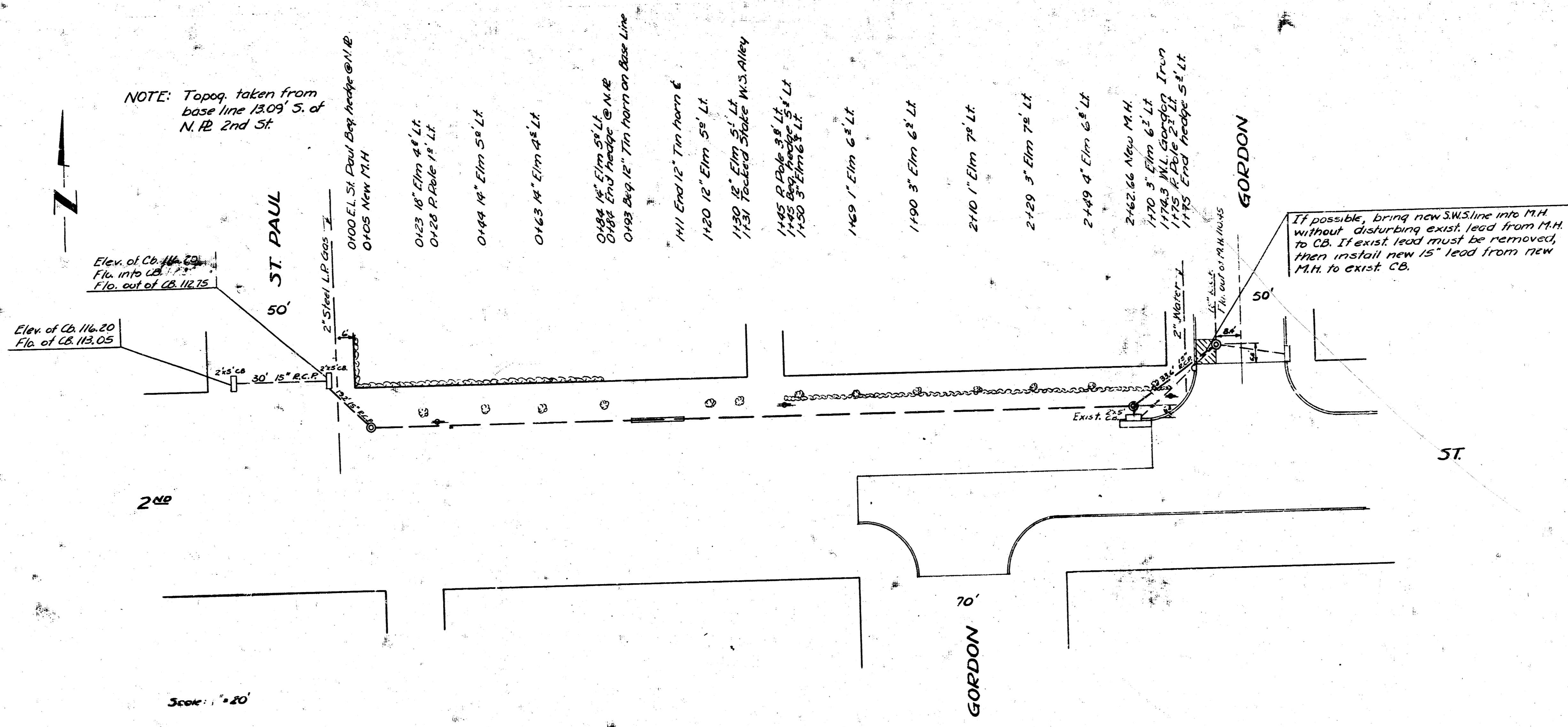
SECOND STREET
 E. L. St. Paul South to W. L. Gordon North
 30' Conc. & cts.
 CITY OF WICHITA, KANS.
 L. K. WHITE, CITY ENGINEER
 DEC. 1950, PROJ. NO. CO-166



40 y

Exc.

C DPs

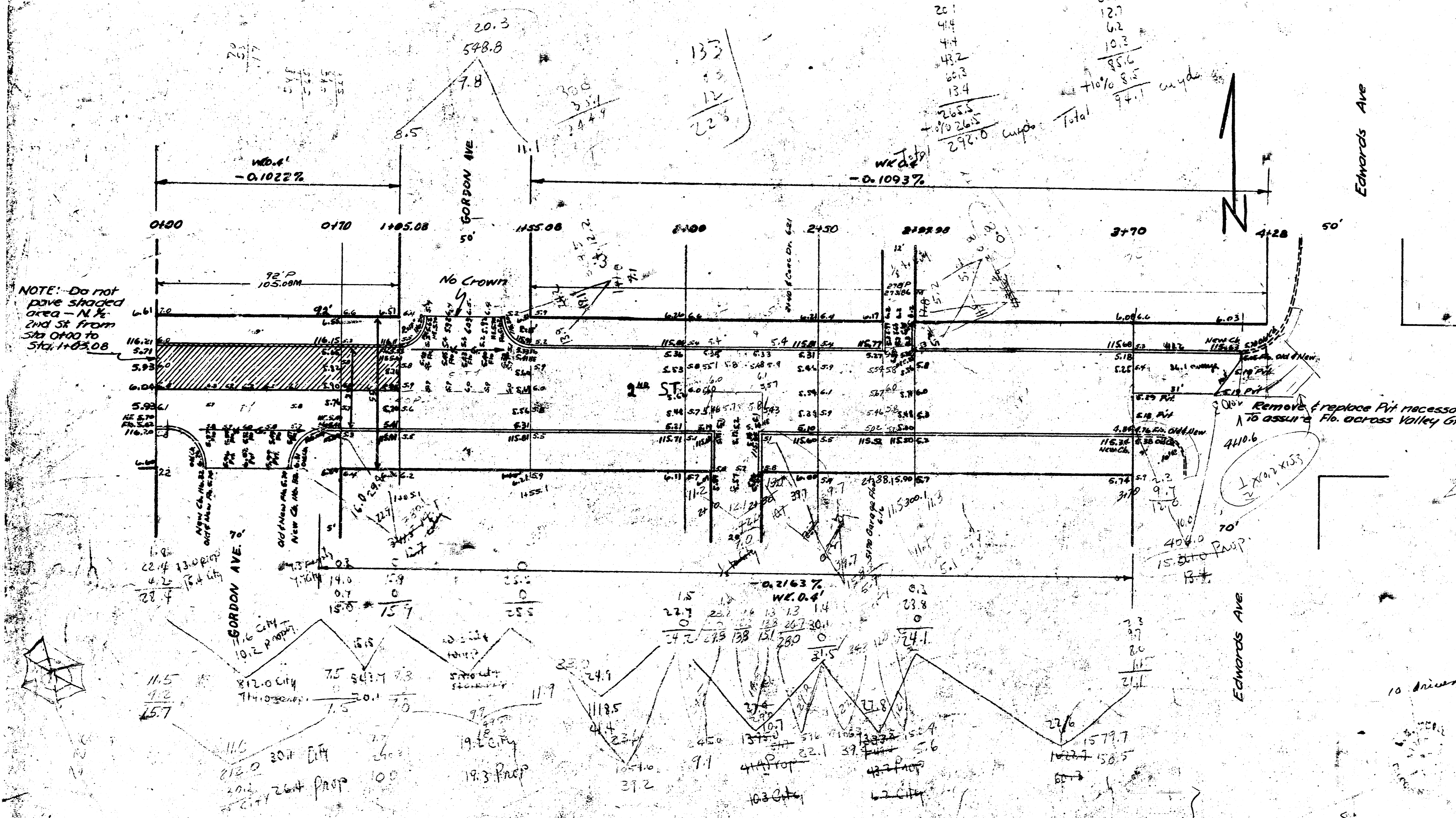


B.M. 115.71 Iron in thimble & Edwards N.S. 2nd St.

Property City

26.4	7.1
19.2	19.2
20.1	30.1
4.4	12.7
4.4	6.2
4.2	10.3
13.4	85.6
205.5	110.0
292.0	74.1
Total	

Total 74.1 cu yds



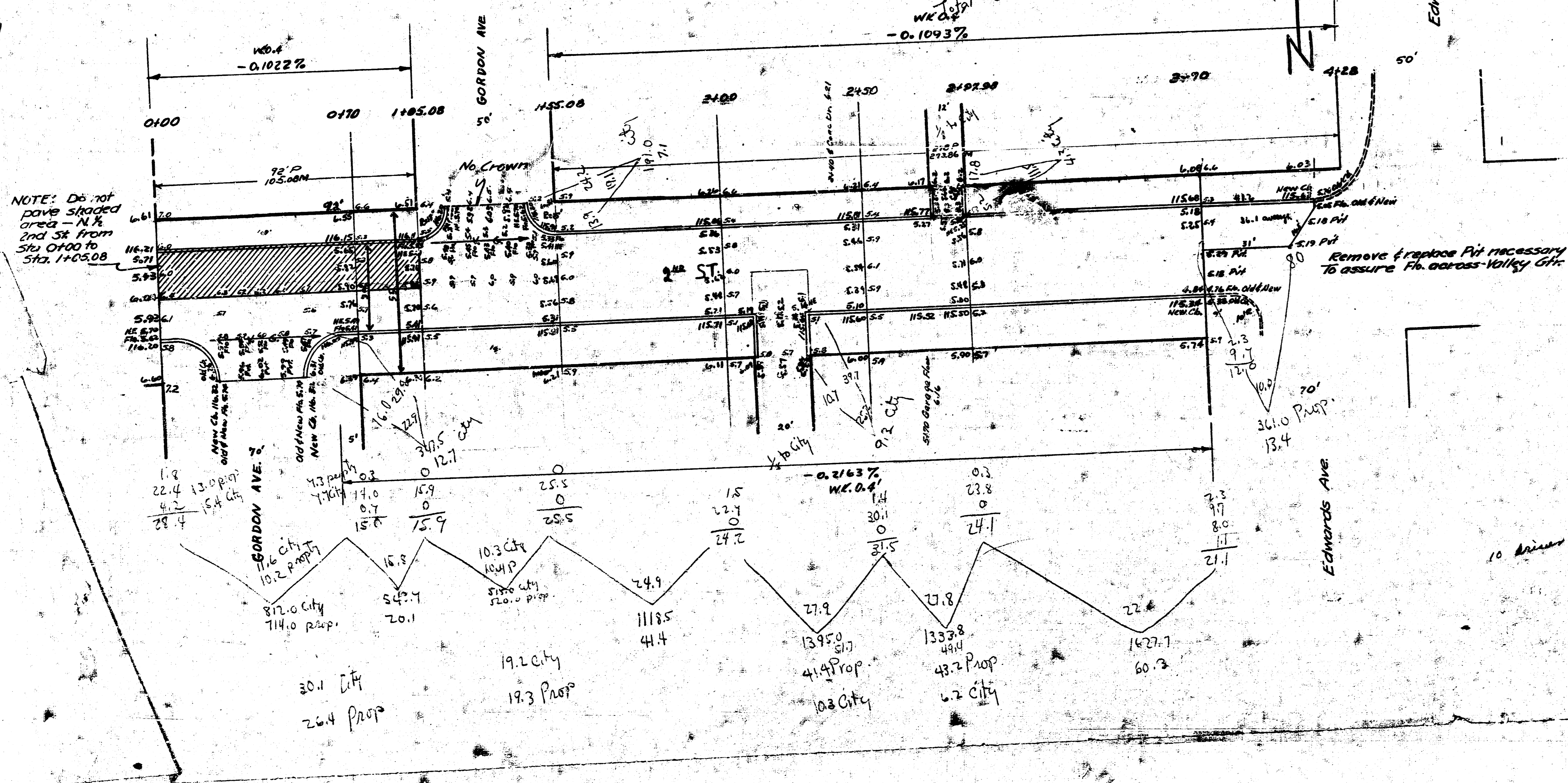
NOTE: Do not pave shaded area - N.E. 1/4 of 2nd St from Sta 0+00 to Sta 1+03.08

Remove & replace P.V. necessary to assure flow across valley off.

SECOND ST
 W.L. Gordon S. W.L. Edwards S.
 30' Conc. - CB
 City of Wichita, Kansas
 L.M. White City Engineer
 September 1947

B.M. 115.71 Iron in thimble @ Edwards N.S. 2nd St.

Property	City
23.4	19.2
19.3	30.1
20.1	12.7
44.7	6.2
44.4	10.3
43.2	85.6
60.3	110.85
13.4	94.1
<u>265.5</u>	
110.26.5	
<u>292.0</u>	
Total	Total
292.0 cu yds	94.1 cu yds



SECOND ST.
 W.L. Gordon S. W.L. Edwards S.
 30' Gr. - CB
 City of Wichita, Kansas
 I.K. White City Engineer
 September 1947