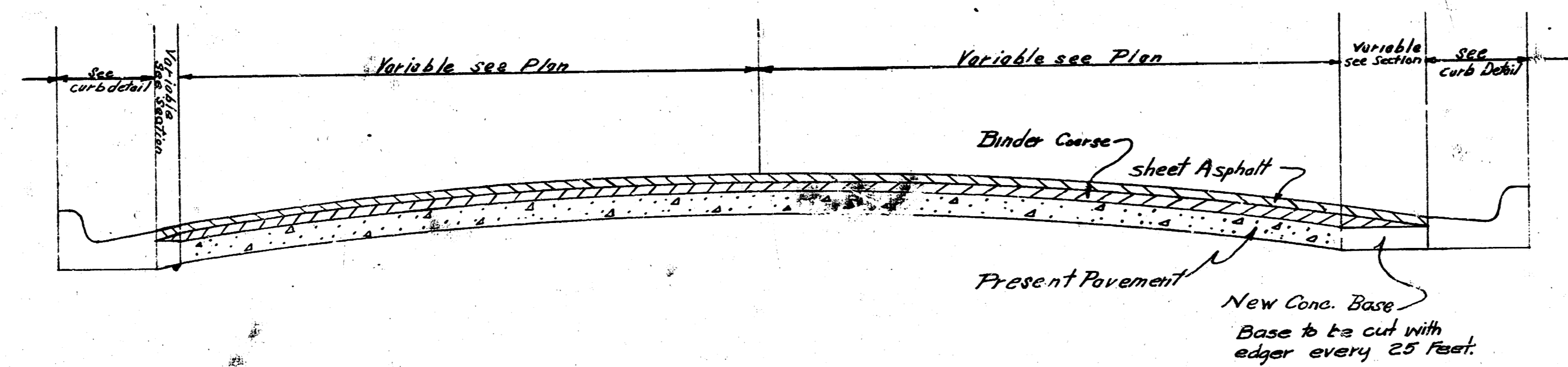
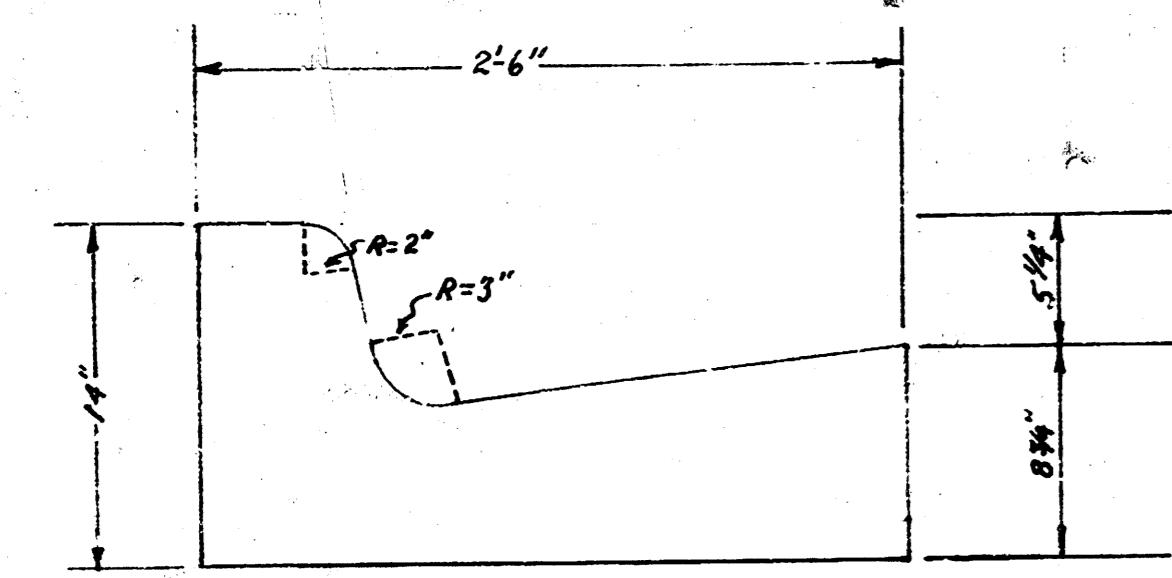


H.E. Malone, Jr.  
T. Co. 44

REPAVING  
THIRD STREET  
E.L. MARKET TO E.L. ST. FRANCIS  
CITY OF WICHITA, KANSAS



TYPICAL SECTION NOT TO SCALE

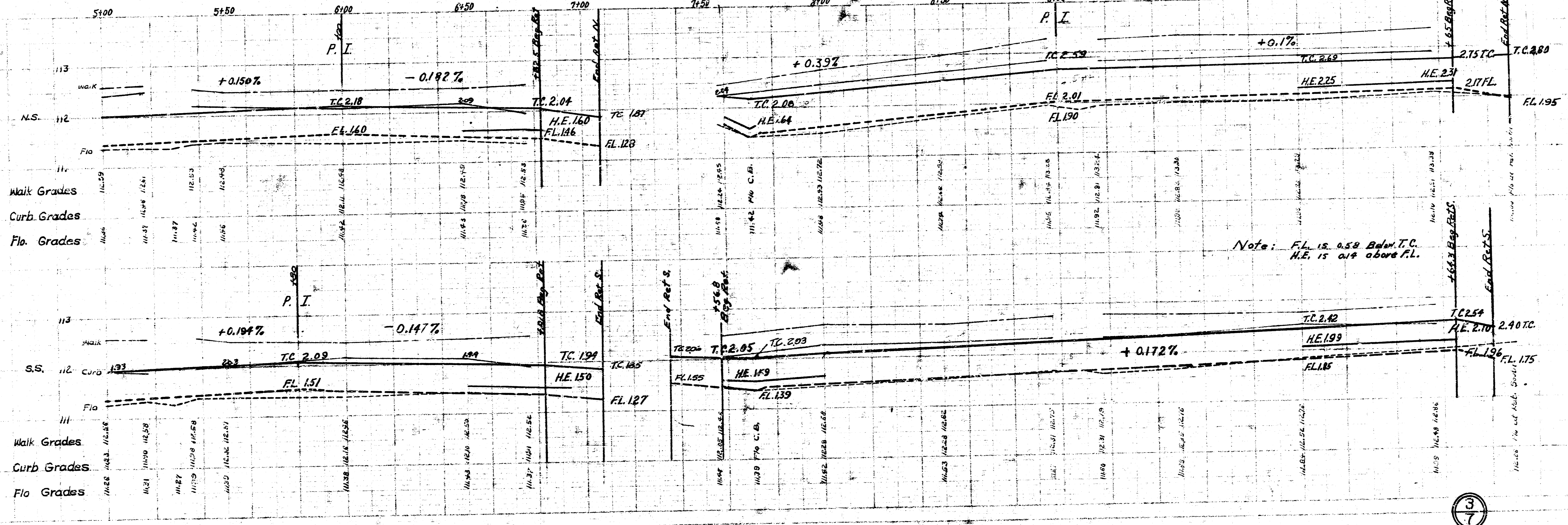
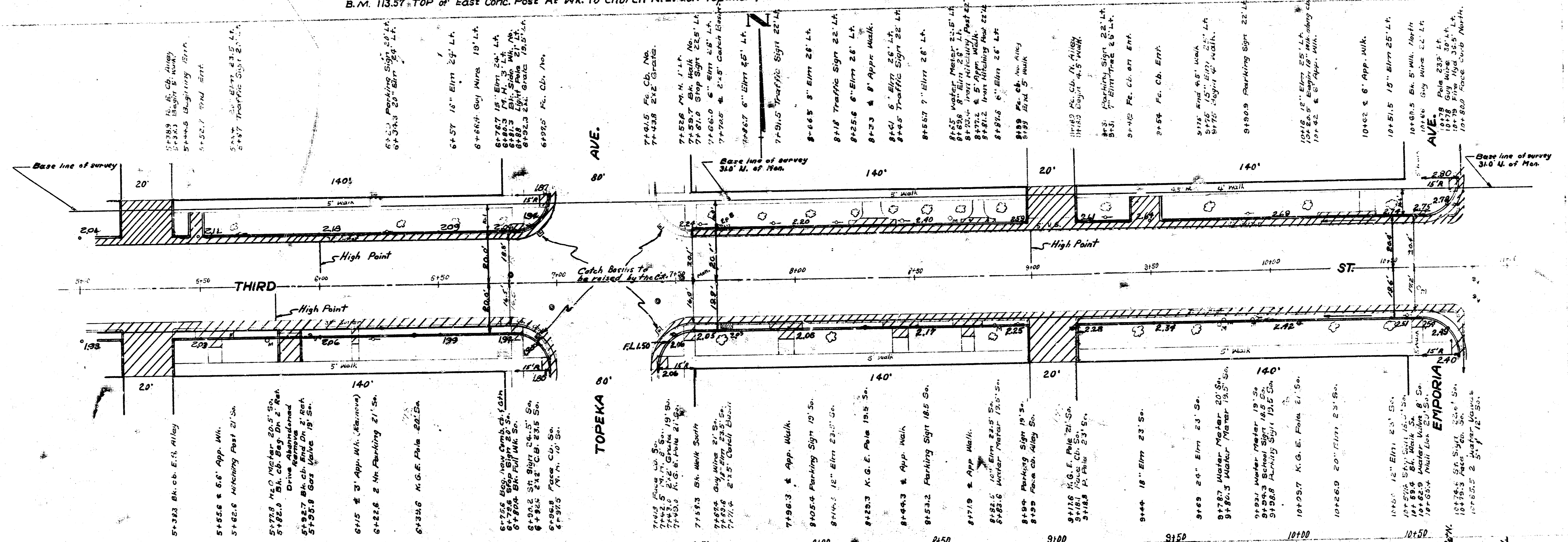


Section through curb and gutter  
Note: use same template as used on City  
standard curb and gutter. The high edge  
is but 8" below top of curb and base is  
level.



B.M. 113.57 TOP of East Conc. Post At Wk. To Church N.E. Cor. Topeka of THIRD.

B.M. 115.12 High Point on Conc. Pilaster Cap S. E. Cor. Emporia of 3rd.

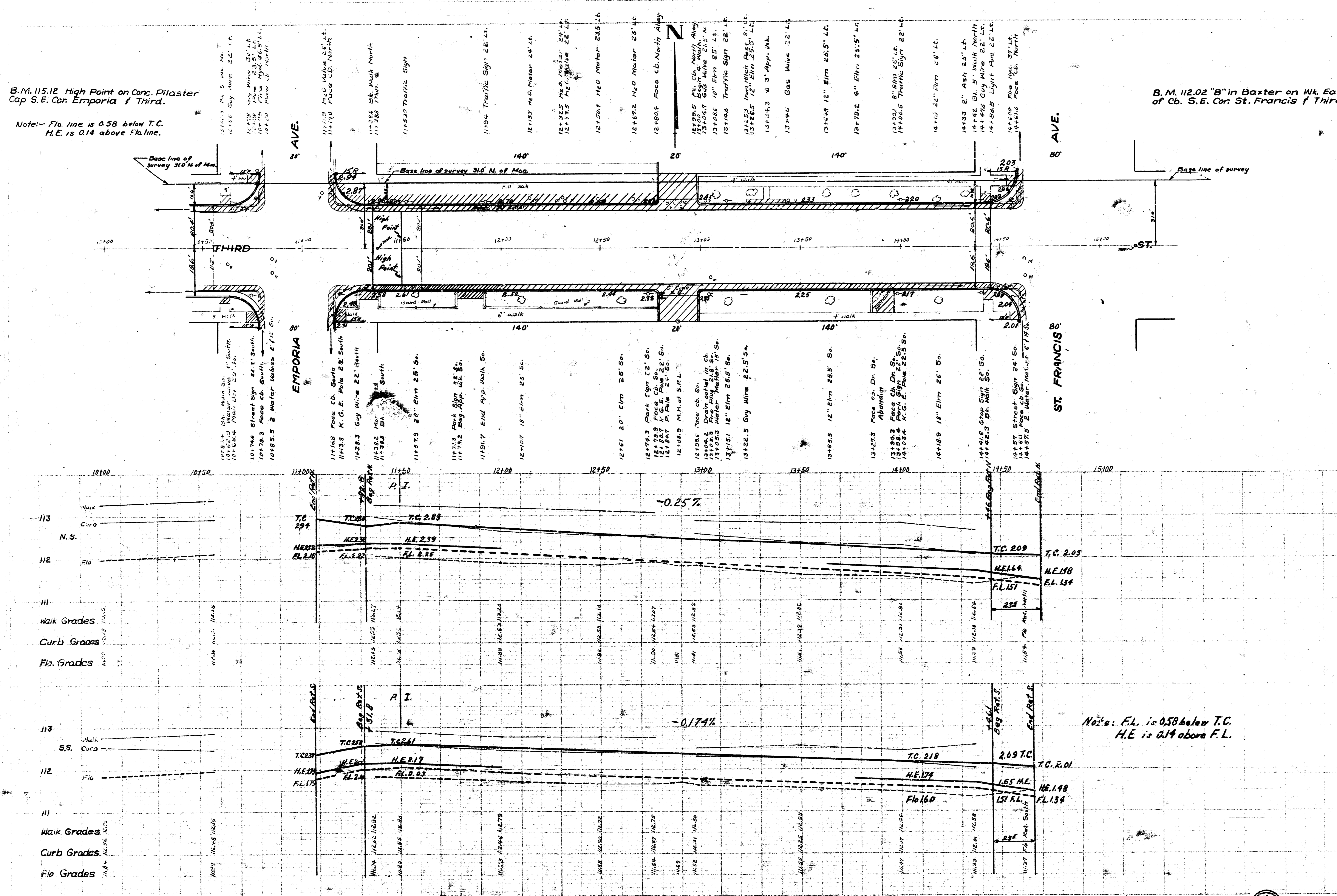


Note: F.L. is 0.50 below T.C.  
H.E. is 0.10 above F.L.

B.M. 115.12 High Point on Conc. Pilaster Cap S.E. Cor. Emporia f Third.

Note: Fla. line is 0.58 below T.C.  
H.E. is 0.14 above Fla. line.

B.M. 112.02 "B" in Baxter on Wk. East of Cb. S.E. Cor. St. Francis f Third.



Note: F.L. is 0.58 below T.C.  
H.E. is 0.14 above F.L.