

B.M. 116.06 'M' IN MULLER FIRE HYD. S.E. CORNER 3RD & VINE.

CHAIN E. ON N. R.

0-31.10 Bk. N. Ca. 15' S.
 0-31.10 Bk. N. Ca. 45' S.
 0-00 W.L. Gossard Substation
 0-00 W.L. Gossard Substation
 0-00 BROWN FENCE 41.5' S.
 0-21 POWER POLE
 0-25 END OF 12" R.C.P. DRAIN FROM SUTTON
 42' S. OF N. R.
 0-10 4' GRASSY SWAY 4' N.

0-80 END FENCE 41.5' S.
 0-81.08 BROWN 6" x 6" CONCRETE 55' S.
 0-81.08 END 6" x 6" CONCRETE 55' S.
 0-91.08 BROWN GATE 20' S.

1-10.08 W.L. GLENN
 1-34.55 Bk. W. Ca.
 1-47.48 END GATE 60' S.
 1-46.56 Bk. E. Ca.

1-80.10 E.L. GLENN
 1-85.60 E. 7" x 15" x 4" CONC. SLAB,
 N. END 48' S.

2-15.08 BROWN GATE 60' S.
 2-18.5 3" ELM 5' S.

2-4.3 SPIERA 5' S.
 2-15.1 BROWN 18" CAMP
 2-15.1 4" x 12" CONC. PIPE BEGINNING 51.6' S.
 2-15.1 4" DRAIN 4' N.
 2-42 END 18" CAMP.

2-84.08 END GATE 60' S.
 2-90 W.L. ALLEY 5' N.
 2-92 W.L. ALLEY 5' S.

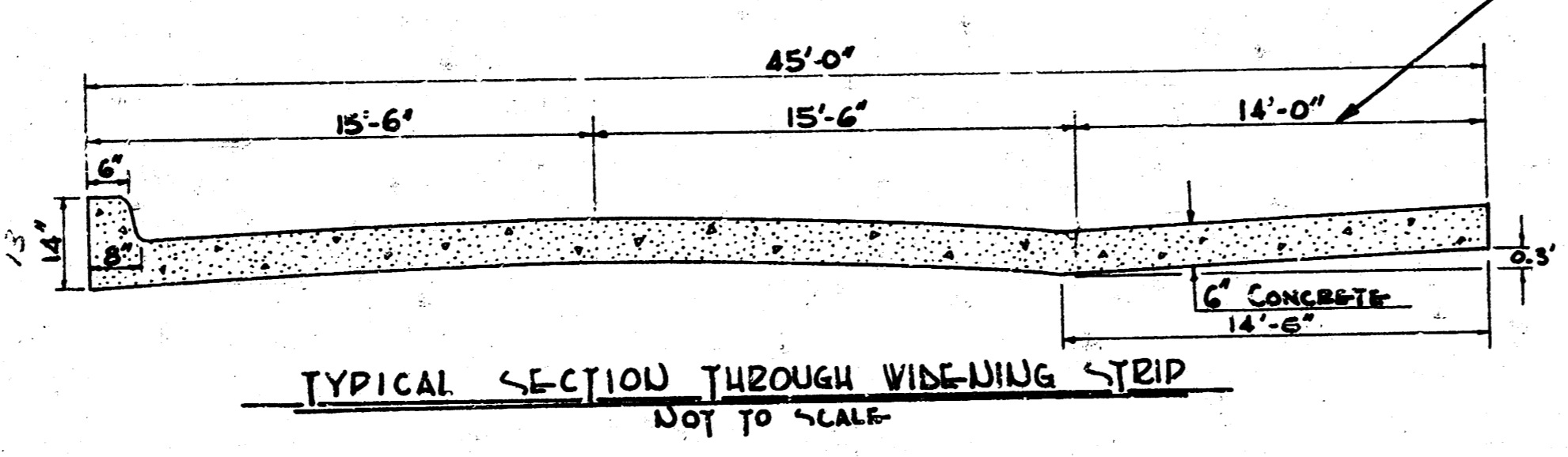
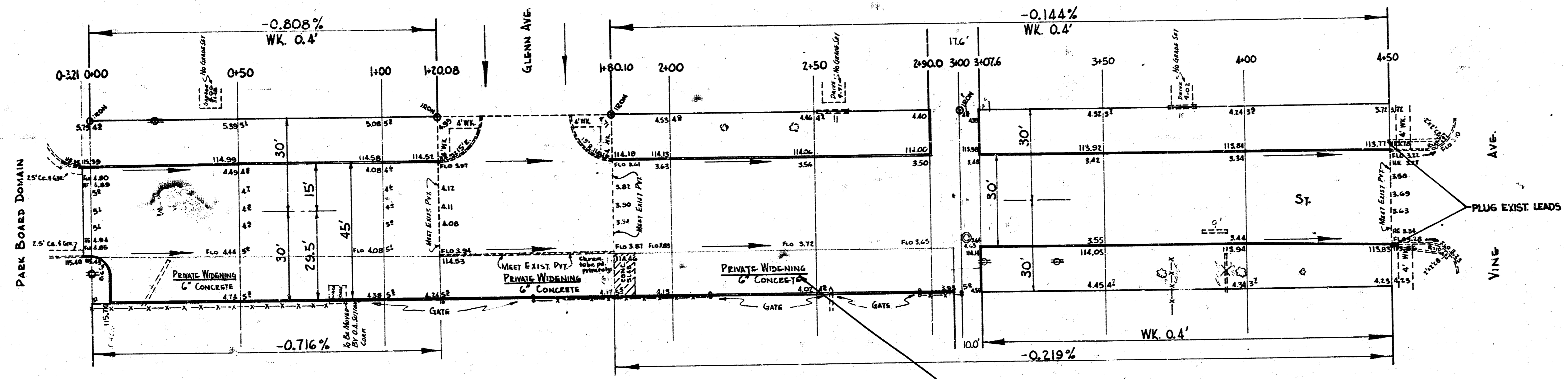
3-02 W.L. S. ELM 114.63 N. S. ELM (DP)
 3-02 E.L. ALLEY
 3-02 POWER POLE 50' S.

3-84 POWER POLE 50' S.
 3-70 20" ELM 55' S.
 3-73 N-S FENCE 50' S.
 3-76 4" x 12" CONC.
 3-84 BROWN 12" TUL. CUL. 41' S.
 3-92 6" x 12" Ca. 42.5' S.
 3-93 4" x 12" Ca. 41' S.
 3-93 40' x 55' S.

4-19 14" ELM 55' S.

4-19 BROWN 12" D.C.P. P.C.B. 17.5' S.
 4-40 BROWN 12" D.C.P. P.C.B. 57' S.
 4-52.15 Bk. W.L.

4-72 Bk. W. Ca. VINE



NOTE: 14" WIDENING TO BE A PRIVATE CONTRACT BETWEEN PAVING CONTRACTOR & O.A. SUTTON, INC.
 NOTE TO CONTRACTOR
 This project will be constructed under the supervision of the CITY ENGINEER and conforming to the SPECIFICATIONS of the CITY OF WICHITA. The CONTRACTOR will reimburse the City of Wichita for all cost of Engineering, Plans, and Inspection.

NOTE TO FIELD ENGINEER & CONTRACTOR
 ALL ENTRANCE PIPES ARE TO BE DISPOSED OF IN ACCORDANCE TO CITY DIST. CHECKER'S INSTRUCTIONS.

TOTAL EXCAV.		CITY	
PROP.	PAVING		
404.2	170.2	26.6	
+10% 40.4	+10% 17.0	+10% 2.7	
444.6 Cu.Yd.	187.2 Cu.Yd.	29.3 Cu.Yd.	



3RD ST.
 W.L. GOSSARD SUB.- W.L. VINE-
 30' CONC. & CB.
 CITY OF WICHITA, KANS.
 B.E. SMITH CITY ENGINEER
 MARCH, 1954 PROJ. NO. C-13-288

