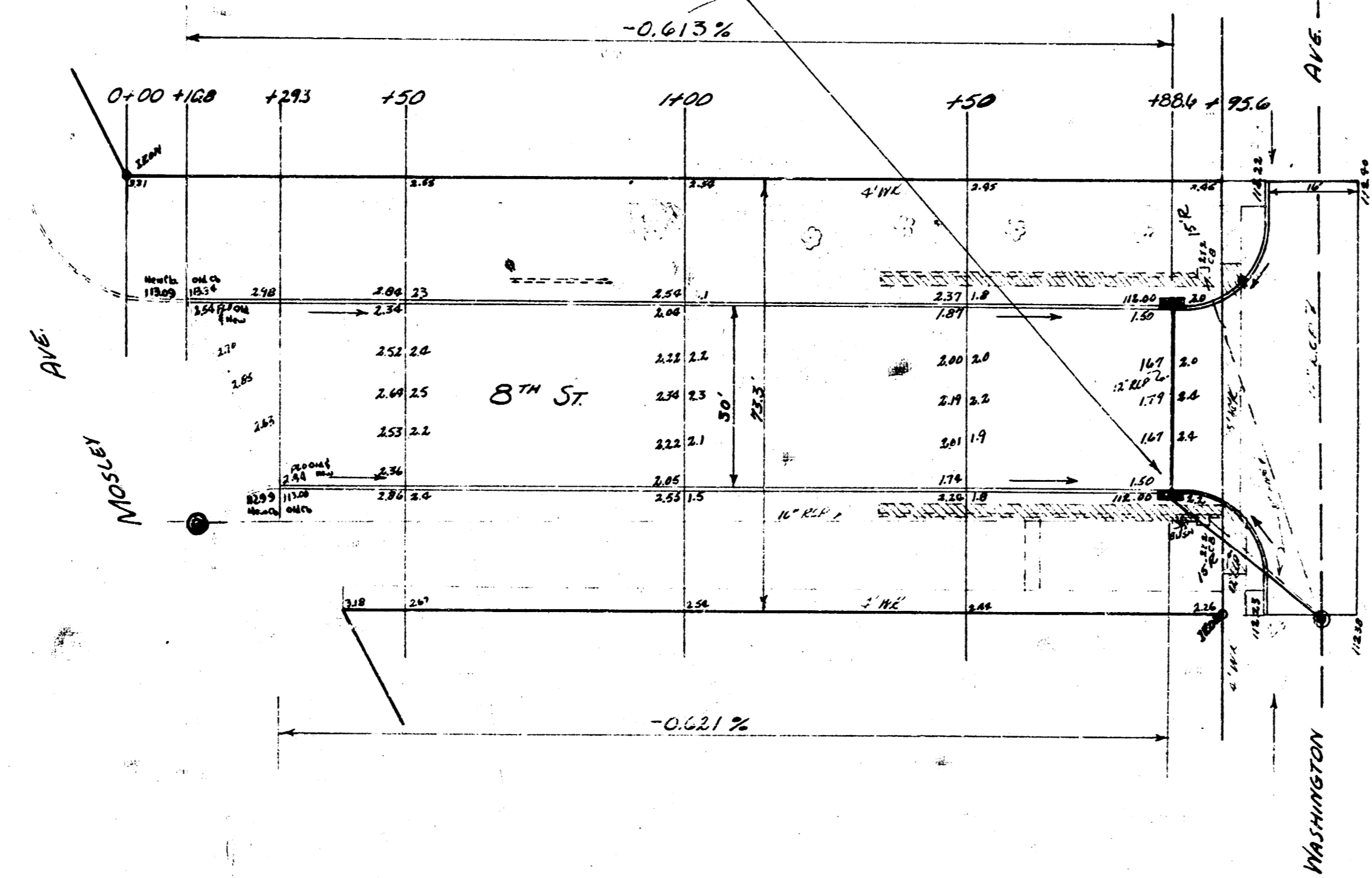


B.M. 113.95 3" Cur on E Side Conc Blue BP Sta
 Center 136 S.W. Mossey & 17th St at W. Washington
 B.M. 115.34 "T" in Tree Fire Plug NE Cor Mossey & 8th

STA ON N.P.



NOTE
 CONCRETE STA 215 (C.B.) CONNECTING NW
 12' 10" W. OF CENTER OF 17th ST



8TH STREET
 EC MOSSEY TO E WASHINGTON
 30' CONC. & C.P.
 CITY OF WICHITA, KANSAS
 B.E. SMITH CITY ENGINEER
 JAN 1955 PRO 1 DE C-11-454