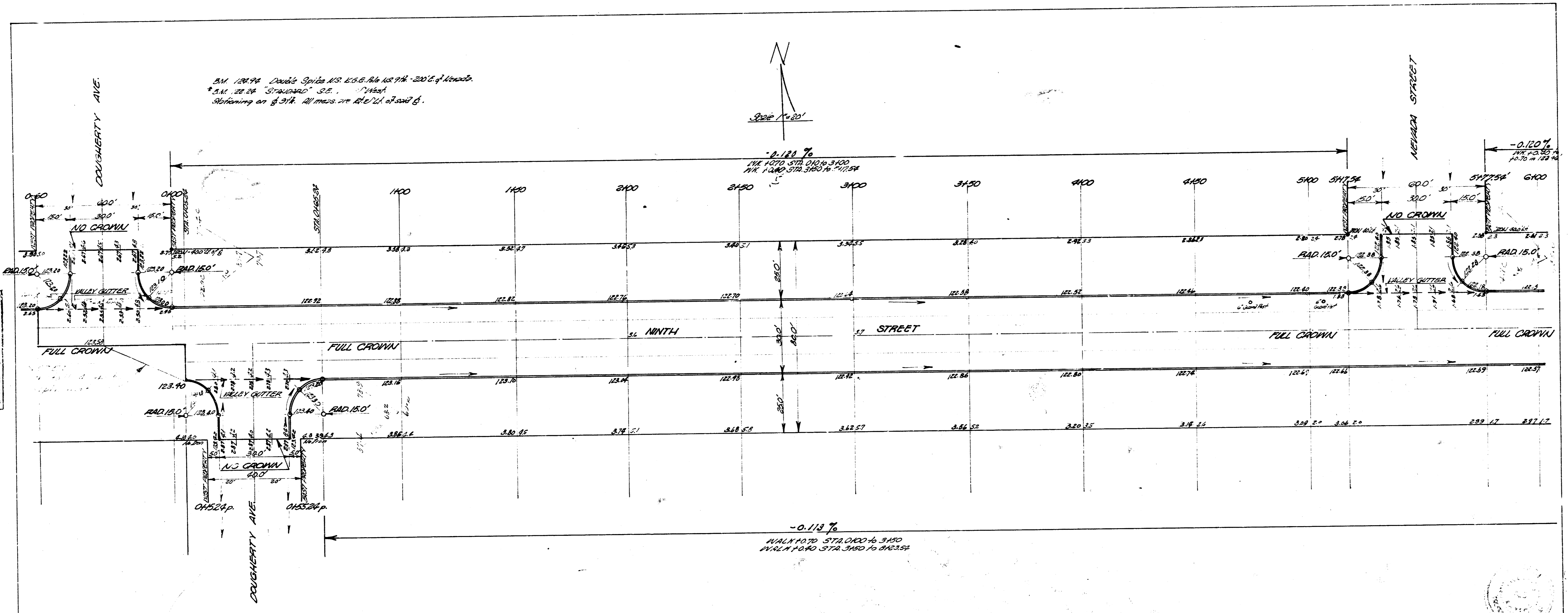
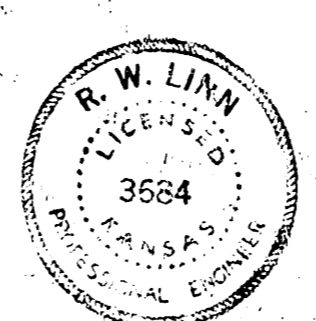


BM 10134 Double Spike 43.25 E. of 17th - 200' of 16000.
 *S.M. 22.24 "Strawson" S.E. "West"
 Stationing on 9th. All mass on level of 10134.



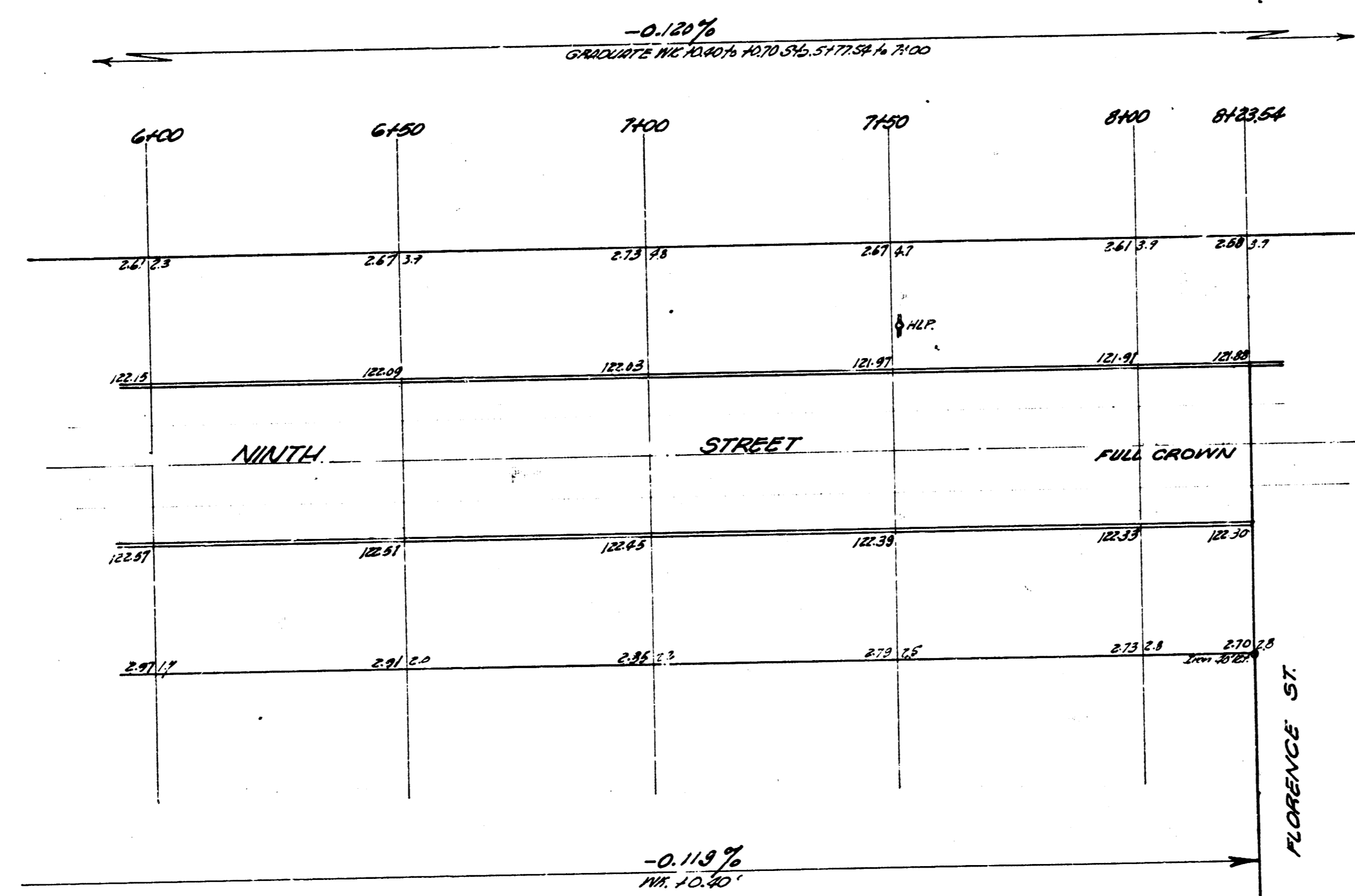
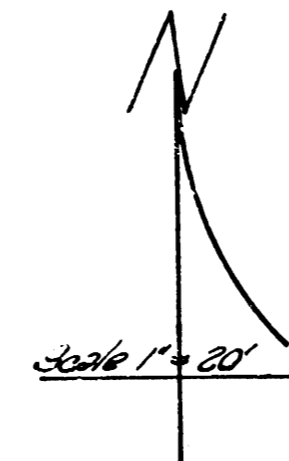
DRAWN BY: J. J. ...
 CHECKED BY: ...
 DATE: ...



FILL TOTALS		EXCAVATION TOTALS	
PROP.	CITY	PROP.	CITY
74.4	6.2	224.50	226.5
10%	7.9	10%	227
81.82%	68.2%	246.32%	453.2%

NINTH STREET
 W. DOUGHERTY - W. FLORENCE ST.
 30.0' CONC./CB.
 CITY OF WICHITA, KANSAS
 B. E. SWITH CITY ENGINEER
 DATE: AUG. 1959, PROJ. NO. C-2-3

SHEET 1/4



NINTH STREET
PROJ. NO. C16-31

SHEET 2/4