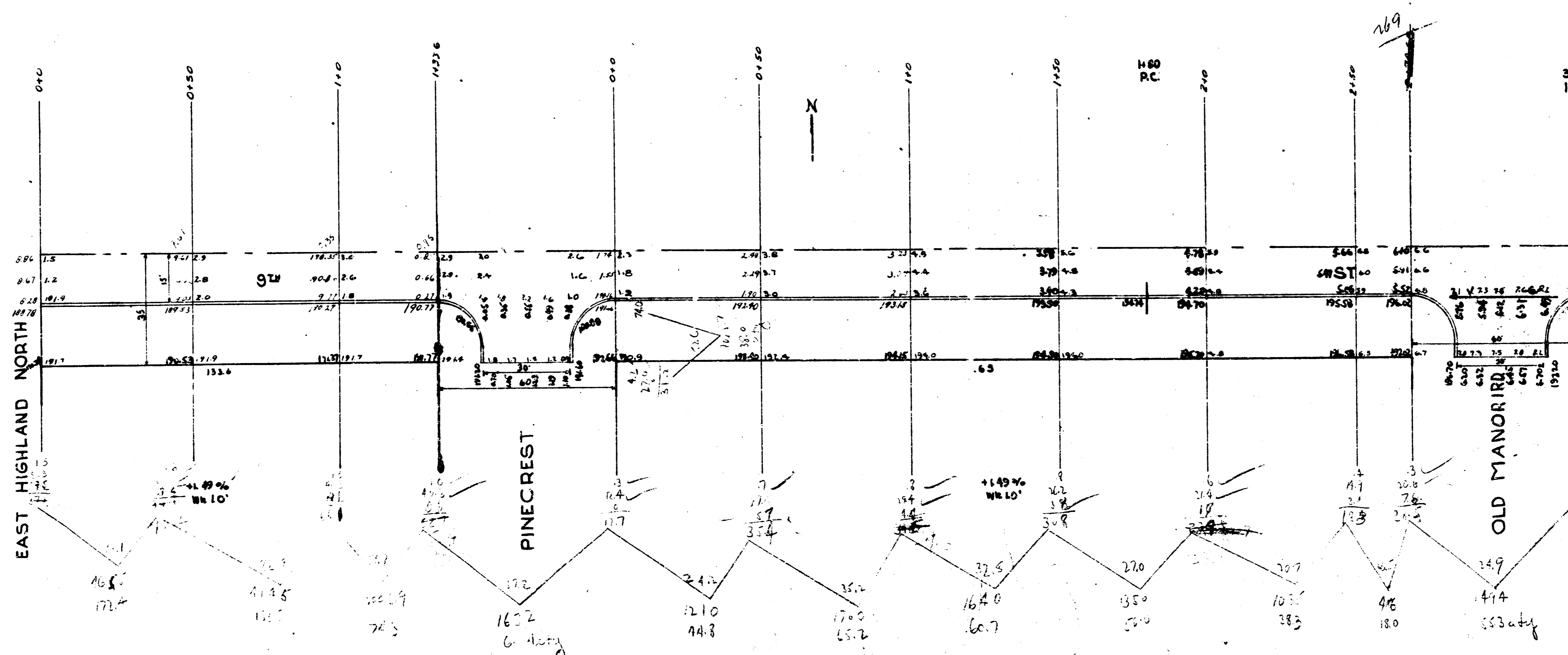


B.M. 186.10 Top of coping near hand rail Post S.E. Cor Bridge 9th & Battin  
 B.M. 190.93 Top Iron E.L. Pinecrest S.L. 9th  
 B.M. 191.35 Top Iron W.L. Pinecrest S.L. 9th



127.4	127.4
131.5	131.5
141.3	141.3
144.8	144.8
151.7	151.7
152.0	152.0
153.3	153.3
154.0	154.0
155.7	155.7
156.0	156.0
157.2	157.2
158.6	158.6
160.0	160.0
162.0	162.0
163.0	163.0
164.0	164.0
165.0	165.0
166.0	166.0
167.0	167.0
168.0	168.0
169.0	169.0
170.0	170.0
171.0	171.0
172.0	172.0
173.0	173.0
174.0	174.0
175.0	175.0
176.0	176.0
177.0	177.0
178.0	178.0
179.0	179.0
180.0	180.0
181.0	181.0
182.0	182.0
183.0	183.0
184.0	184.0
185.0	185.0
186.0	186.0
187.0	187.0
188.0	188.0
189.0	189.0
190.0	190.0
191.0	191.0
192.0	192.0
193.0	193.0
194.0	194.0
195.0	195.0
196.0	196.0
197.0	197.0
198.0	198.0
199.0	199.0
200.0	200.0

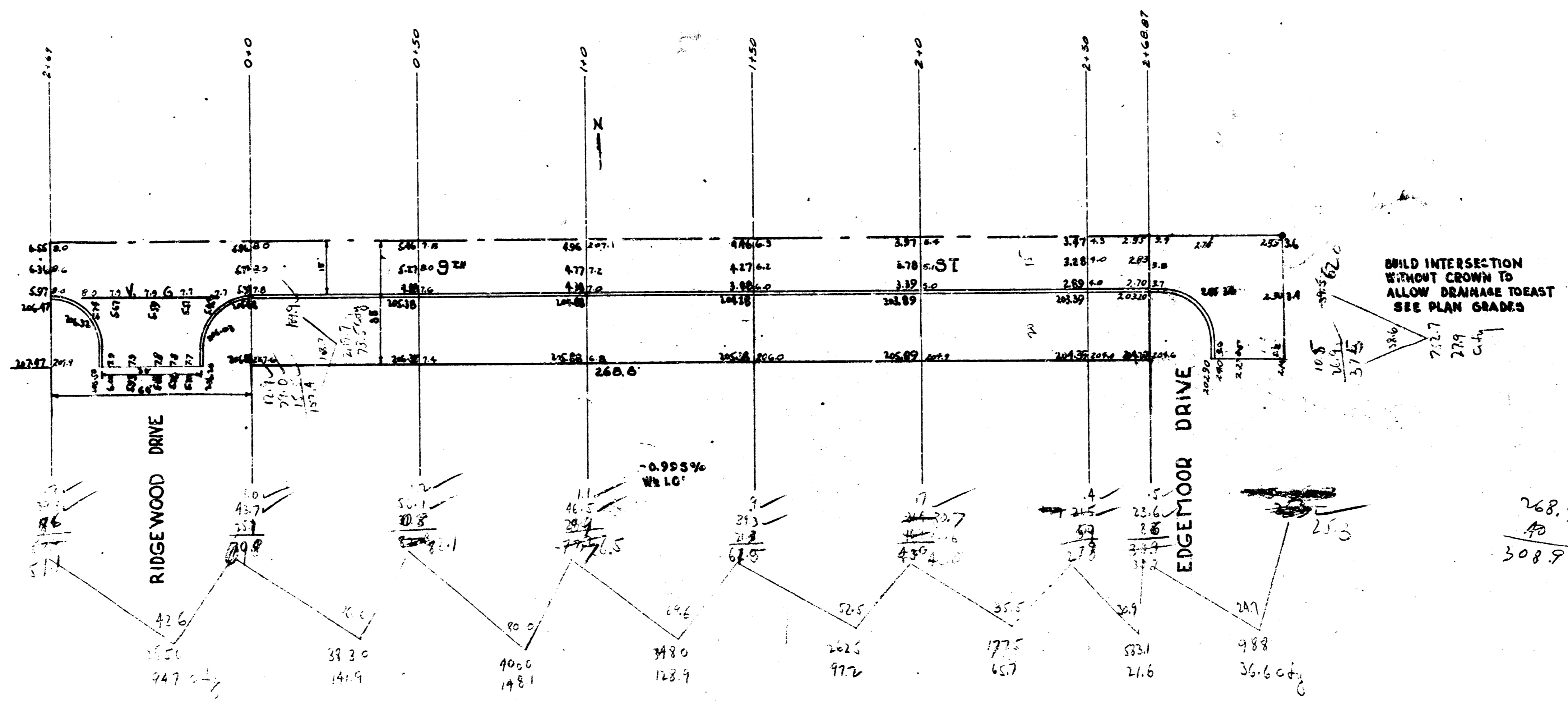
165.0	165.0
166.0	166.0
167.0	167.0
168.0	168.0
169.0	169.0
170.0	170.0
171.0	171.0
172.0	172.0
173.0	173.0
174.0	174.0
175.0	175.0
176.0	176.0
177.0	177.0
178.0	178.0
179.0	179.0
180.0	180.0
181.0	181.0
182.0	182.0
183.0	183.0
184.0	184.0
185.0	185.0
186.0	186.0
187.0	187.0
188.0	188.0
189.0	189.0
190.0	190.0
191.0	191.0
192.0	192.0
193.0	193.0
194.0	194.0
195.0	195.0
196.0	196.0
197.0	197.0
198.0	198.0
199.0	199.0
200.0	200.0

9th ST S 1/2  
 EL EAST HIGHLAND NORTH  
 W. L. EDGE MOOR  
 15 CONCRETE & CURB .. SQ  
 CITY OF WICHITA, KAN.  
 L. K. WHITE CITY ENGINEER  
 DEC 1900



B.M. 203.02 Top Iron W.L. Edgemoor S.L. 95'

141.7	74.7
149.1	78.5
157.9	82.6
97.2	17.9
65.7	237.7
21.6	10.5
603.4	701.5
100%	
603.4	



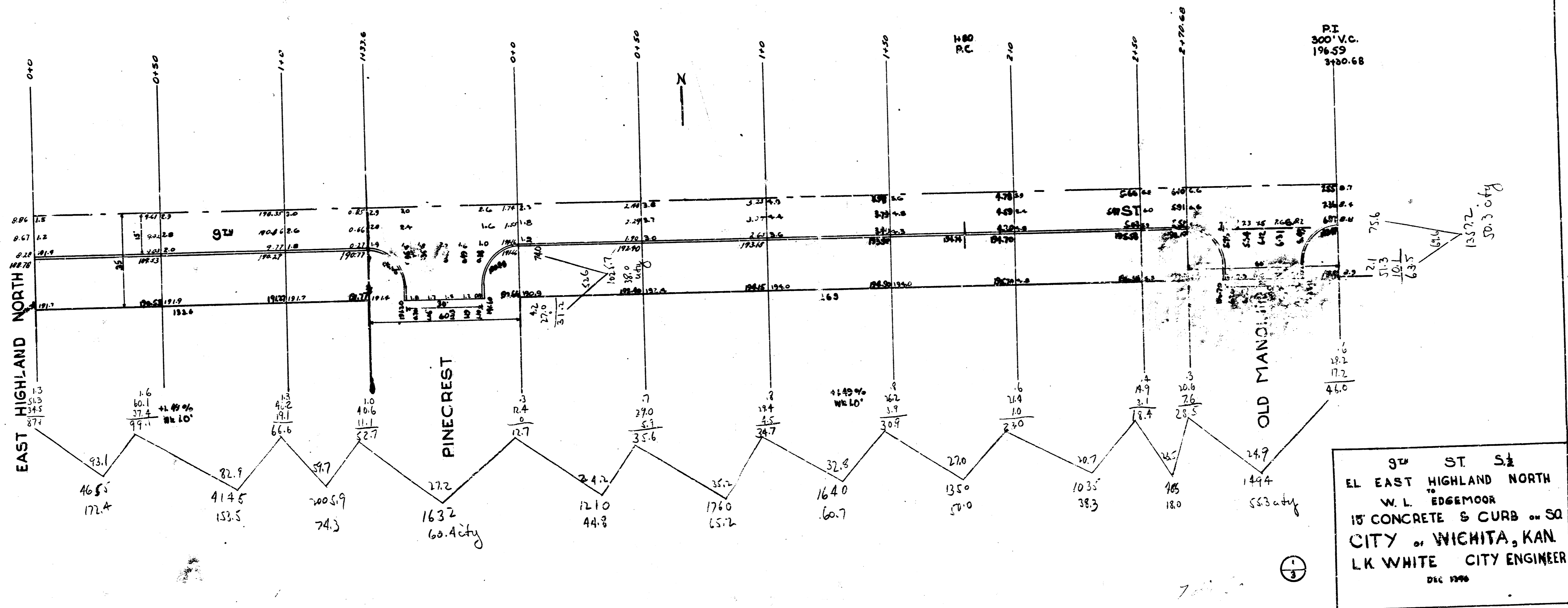
268.9
90
308.9

B.M. 186.10 Top of coping near hand rail Post S.E. Cor Bridge 9th & Batten  
 B.M. 190.93 Top Iron E.L. Pinecrest S.L. 9th.  
 B.M. 191.35 Top Iron W.L. Pinecrest S.L. 9th.

P  
 172.4  
 153.5  
 74.3  
 44.8  
 65.2  
 66.7  
 50.0  
 38.3  
 19.0  
 177.2  
 +1.0%  
 1449.0

C  
 60.7  
 53.0  
 53.3  
 25.0  
 +1.5%  
 222.2

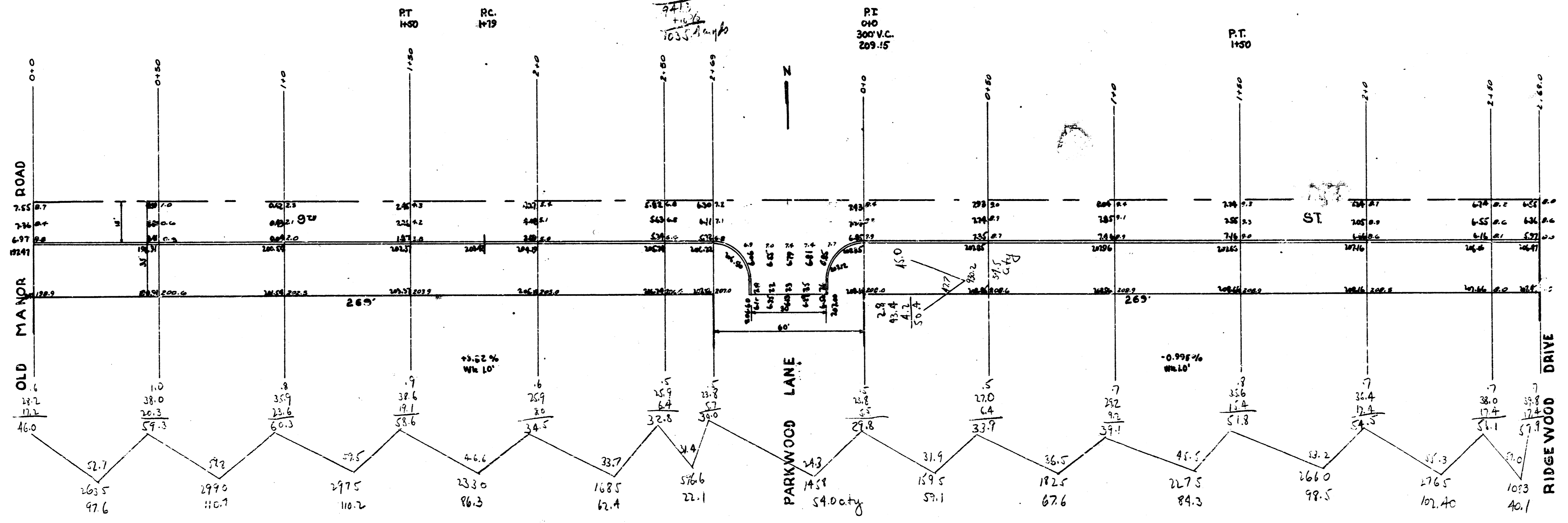
TOTALS  
 PAV. CITY  
 744.9 222.2  
 1035.4 97.4  
 362.7 281.5  
 2444.0 511.1



9th ST S  
 EL EAST HIGHLAND NORTH  
 W. L. EDGE MOOR  
 18" CONCRETE & CURB on SO  
 CITY OF WICHITA, KAN.  
 L. K. WHITE CITY ENGINEER  
 DEC 1906

B.M. 136.75 Top Iron W.L. Old Manor - S.L. 9th  
 B.M. 206.65 Top Iron W.L. Parkwood - S.L. 9th

<u>Paving</u> 97.6 110.7 110.2 120.3 62.1 26.1 50.1 67.6 84.3 98.3 102.4 42.1 <hr/> 97.6 103.5 163.5 100.0 163.5	<u>City</u> 54.0 34.5 <hr/> 88.5 +10% 97.4 97.4
---	---



10' design

B.M. 203.02 Top Iron W.L. Edgemoor S.L. 924

P. 112	City
141.9	94.7
148.1	78.5
128.9	36.6
82.2	27.9
65.7	237.7
21.6	100.6
603.4	2615.0
+1026	
663.7	

